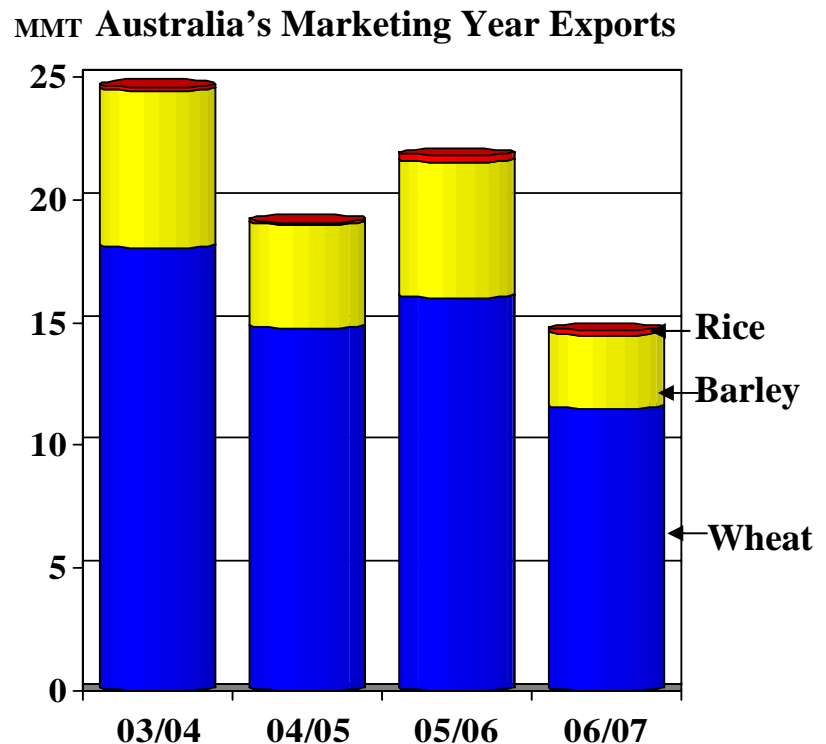
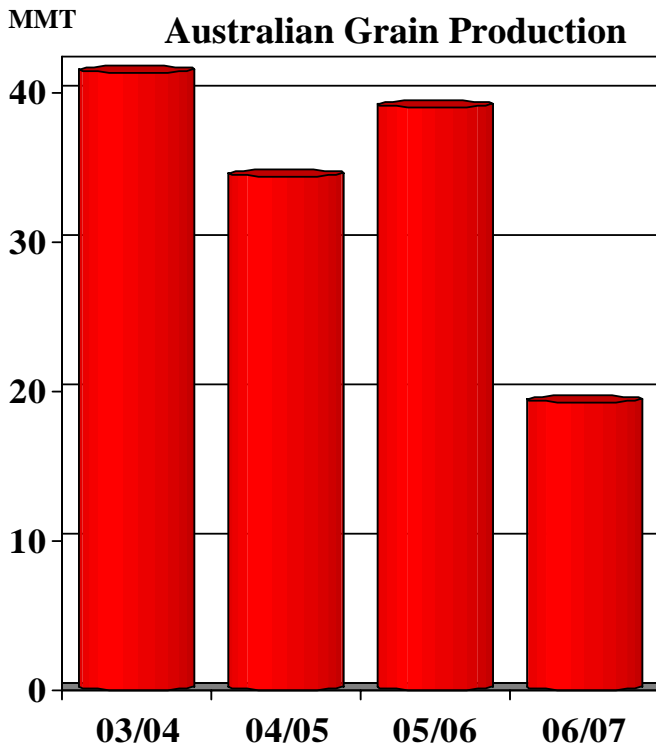




Grain: World Markets and Trade

Drought Slashes Australia's Exportable Supplies



Severe drought in Australia this year is decimating grain crops, curtailing exports and causing major price and trade impacts on global grain markets. For wheat, Australia is one of the world's largest suppliers but exports are now forecast to drop by a third. This will likely mean sharply reduced shipments to Mediterranean markets such as Egypt and a greater focus on traditional Asian destinations. A dearth of Australian supplies will exacerbate an already very tight global situation and result in even further drawdowns in exporters' stocks (which typically impact world prices). This has already caused prices to soar to the highest levels in a decade. As the world's largest barley exporter for the past 3 years, sharply lower exportable supplies will support higher prices and cause demand to shift to European and Black Sea region suppliers. For rice, Australia had returned as a significant player in the medium-grain market. However, with production forecast to plunge nearly two-thirds, importers will have to source more medium-grain rice from the United States, Egypt, and China.

TABLE OF CONTENTS

World Markets and Trade: Commentary and Current Data	
Wheat	4
Rice	10
Coarse Grains.....	16
Historical Data Series for Selected Regions and Countries	40
Endnotes to Grain: World Markets and Trade	65

Circular Modifications:

FAS released a new version of PSD Online on August 31, 2006. It retains all of the ease-of-use and functionality of the current version, while incorporating some new features. It is available on the FAS website (<http://www.fas.usda.gov/psdonline/>).

The new system allowed us to overhaul this Circular so readers may have noticed a new look during the past few months. This revised format will be "in transition" over the next several months, as we make use of the expanded capabilities of the new PSD system. The circular will also now be released earlier at 12:00 p.m.

Your comments on the new Circular will be welcome and can be sent to gfd@usda.gov. We thank you in advance for your patience over the next few months.

All Grain Summary Comparison

		Wheat			Rice, Milled			Corn		
Marketing Year		2004/05	2005/06	2006/07	2004/05	2005/06	2006/07	2004/05	2005/06	2006/07
Production										
United States	(Jun-May)	58.7	57.3	49.3	7.5	7.1	6.1	299.9	282.3	277.0
Other		570.1	561.6	535.8	393.0	408.7	411.3	412.4	410.5	412.1
World Total		628.8	618.8	585.1	400.5	415.8	417.4	712.3	692.7	689.1
Domestic Consumption										
United States	(Jun-May)	31.8	31.2	31.2	3.9	3.8	3.9	224.6	231.6	244.9
Other		577.0	586.6	583.7	401.9	408.2	412.6	459.3	468.7	477.0
World Total		608.8	617.8	614.8	405.8	412.0	416.5	683.9	700.3	721.8
Ending Stocks										
United States	(Jun-May)	14.7	15.5	11.4	1.2	1.4	1.1	53.7	50.1	25.3
Other		136.8	131.7	107.9	76.8	78.9	77.8	76.8	73.4	64.2
World Total		151.5	147.2	119.3	78.0	80.3	78.8	130.5	123.5	89.5
TY Imports										
United States	(Jun-May)	1.9	2.3	2.8	0.4	0.6	0.6	0.3	0.3	0.3
Other		108.2	108.2	107.3	26.5	25.6	25.4	76.0	78.2	79.0
World Total		110.2	110.5	110.1	26.9	26.1	26.0	76.3	78.4	79.3
TY Exports										
United States	(Jun-May)	28.5	27.4	26.0	3.9	3.7	3.0	45.3	56.5	57.0
Other		84.7	86.1	85.8	25.1	24.4	25.1	31.1	24.5	23.7
World Total		113.1	113.5	111.8	29.0	28.1	28.1	76.5	81.0	80.7

Note: Consumption in this table has not been adjusted for differences in marketing year imports and exports differs from global totals shown elsewhere.

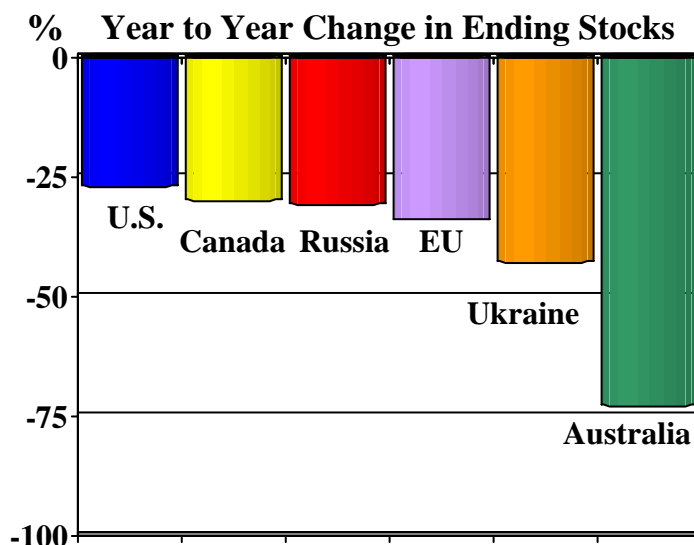
Marketing years for U.S. grains are: Wheat (Jun-May), Rice (Aug-Jul), Corn (Sep-Aug).

WHEAT: WORLD MARKETS AND TRADE

MONTHLY HIGHLIGHTS:

Exporter Stocks Continue To Shrink:

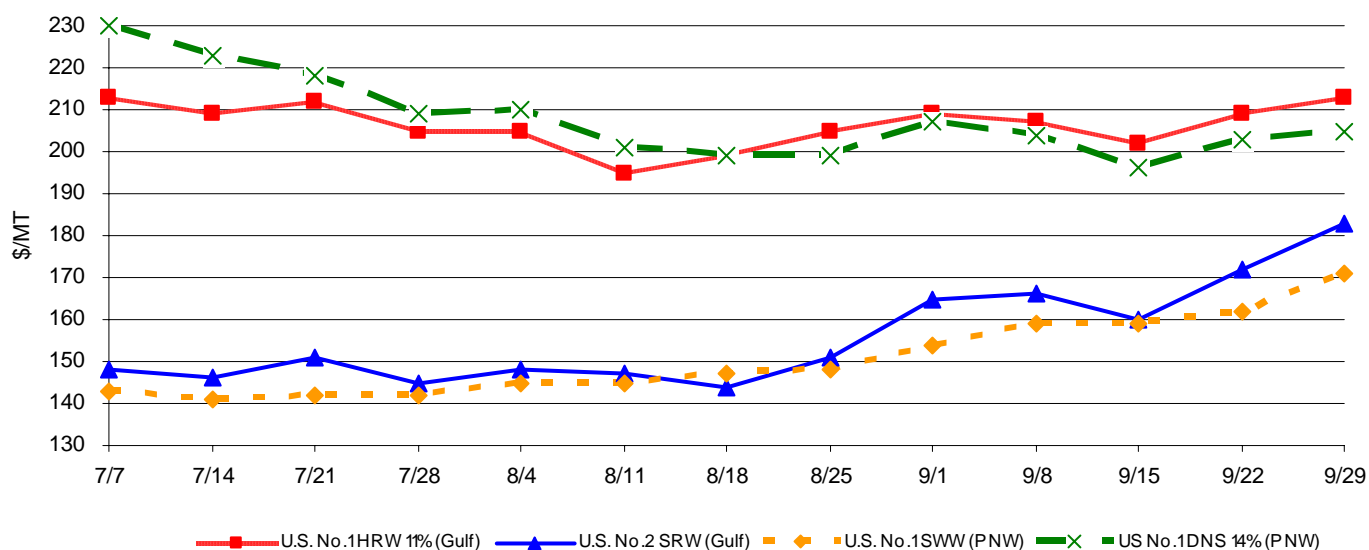
Drastic deterioration in the Australian crop is further tightening the world wheat situation, causing stocks in the major exporting countries to fall below the benchmark low level of 1995/96. Stocks are expected to decline in every major exporter, pushing prices to the highest levels in a decade. In the European Union, milling wheat has been sold out of intervention storage at 25 percent (\$33) above acquisition costs. U.S. ending stocks are now forecast to drop to a 10-year low.



PRICES:

Domestic: For September, prices rose for most classes, especially at the end of the month as supplies continued to tighten in many of the world's major exporters, especially Australia. For soft wheat, very strong export demand also supported prices and continued to narrow the hard/soft wheat price spread. For the month, Soft Red Winter (SRW) prices rose \$18 per ton and Soft White (SWS) prices rose \$17. Hard Red Winter (HRW) rose \$4 per ton, while Hard Red Spring (HRS) prices fell \$2.

U.S. Weekly FOB Export Bids



TRADE CHANGES IN 2006/2007

Selected Exporters

- **Argentina** is up 500,000 tons to 9.0 million on robust shipments of old crop supplies in recent months and very strong new crop sales.
- **Australia** is down 4.5 million tons to 13.0 million as drought-ravaged production is expected to significantly curtail exports.
- **Canada** is up 1.5 million tons to 20.5 million as production is raised this month and supplies are plentiful enough to replace Australian sales in key Asian markets.
- **EU-25** is up 500,000 tons to 16.0 million despite a downward revision in production. Wheat export licenses are currently nearly 30 percent ahead of last year's pace, despite zero subsidy. With exports expected to wane from the Black Sea region during the second half of the trade year, coupled with less competition from Australia, this should create more opportunities to export European supplies to key Mediterranean markets.
- **Kazakhstan** is up 500,000 tons to 5.0 million. Production is expected to be up from last year, and very high world prices will likely result in greater exports outside the Former Soviet Union.
- **United States** is up 500,000 tons to 26.0 million. Despite sluggish sales, reduced competition from Australia is expected to boost sales and shipments in coming months.

Selected Importers

- **Brazil** is up 200,000 tons to 7.0 million as production has fallen to only half of the level of 2 years ago.
- **Egypt** is down 200,000 tons to 7.0 million on very high world prices and the slow pace of purchases by GASC (General Authority for Supply Commodities).
- **Nigeria** is down 400,000 tons to 3.9 million. Although consumption is still expected to expand, very high world prices and slow purchases to date indicate import growth will be less than previously anticipated.
- **South Africa** is down 100,000 tons to 1.0 million as a sharply larger crop reduces import needs.

World Wheat, Flour, and Products Trade
July/June Year, Thousand Metric Tons

	2002/03	2003/04	2004/05	2005/06	2006/07 Sep	2006/07 Oct
TY Exports						
Argentina	6,276	7,346	13,502	8,301	8,500	9,000
Australia	10,946	15,096	15,826	15,213	17,500	13,000
Bulgaria	1,107	40	1,100	1,200	1,000	1,000
Canada	9,393	15,526	15,142	15,644	19,000	20,500
China, Peoples Republic of	1,718	2,824	1,171	1,397	2,000	2,000
EU-25	19,940	10,931	14,367	15,000	15,500	16,000
Kazakhstan, Republic of	6,238	4,110	2,700	3,000	4,500	5,000
Russian Federation	12,621	3,114	7,951	10,500	7,500	7,500
Turkey	839	854	2,217	2,900	2,000	2,000
Ukraine	6,569	66	4,351	6,461	4,000	4,000
Others	11,655	12,320	6,324	6,455	5,715	5,790
Subtotal	87,302	72,227	84,651	86,071	87,215	85,790
United States	22,834	32,295	28,464	27,424	25,500	26,000
World Total	110,136	104,522	113,115	113,495	112,715	111,790
TY Imports						
Algeria	6,079	3,933	5,398	5,500	4,800	4,800
Bangladesh	1,335	1,945	2,009	2,100	2,100	2,100
Brazil	6,631	5,559	5,309	6,194	6,800	7,000
Colombia	1,166	1,246	1,248	1,314	1,350	1,350
Egypt	6,327	7,295	8,150	7,700	7,200	7,000
EU-25	13,921	5,912	7,393	7,600	6,800	6,800
India	19	8	14	118	6,000	6,000
Indonesia	3,984	4,535	4,661	5,000	4,800	4,800
Iraq	1,579	1,925	3,010	4,800	4,000	4,000
Israel	1,691	951	1,549	1,600	1,200	1,200
Japan	5,579	5,751	5,744	5,469	5,500	5,500
Korea, Republic of	4,052	3,434	3,591	3,884	3,600	3,600
Libya	1,421	1,057	1,508	1,700	1,500	1,500
Malaysia	1,195	1,329	1,412	1,200	1,350	1,350
Mexico	3,161	3,644	3,717	3,549	3,700	3,600
Morocco	2,720	2,414	2,272	2,450	1,900	1,900
Nigeria	2,304	2,383	3,014	3,656	4,300	3,900
Peru	1,157	1,488	1,449	1,656	1,500	1,500
Philippines	3,230	2,975	2,593	2,954	2,700	2,700
Russian Federation	1,045	1,026	1,197	1,100	1,200	1,200
Sudan	860	995	1,522	1,659	1,600	1,600
Thailand	895	1,139	1,081	1,174	1,200	1,200
Venezuela	961	1,538	1,504	1,691	1,600	1,600
Vietnam	875	830	1,226	1,181	1,300	1,300
Yemen	1,772	1,635	1,853	2,100	1,900	1,900
Others	31,814	35,050	35,790	30,874	28,370	27,945
Subtotal	105,773	99,997	108,214	108,223	108,270	107,345
Unaccounted	2,405	2,765	2,955	2,963	1,645	1,645
United States	1,958	1,760	1,946	2,309	2,800	2,800
World Total	110,136	104,522	113,115	113,495	112,715	111,790

World Wheat Production, Consumption, and Stocks
Local Marketing Years, Thousand Metric Tons

	2002/03	2003/04	2004/05	2005/06	2006/07 Sep	2006/07 Oct
Production						
Argentina	12,300	14,500	16,000	13,000	13,250	13,250
Australia	10,132	26,132	22,600	24,500	19,500	11,000
Canada	16,198	23,552	25,860	26,775	25,900	26,300
China, Peoples Republic of	90,290	86,490	91,950	97,450	105,000	103,500
Egypt	6,300	6,443	7,177	8,184	8,200	8,200
EU-25	124,829	106,878	136,774	122,638	119,175	117,887
India	71,810	65,100	72,150	68,640	68,000	68,000
Iran	12,450	13,500	14,000	14,500	14,000	14,000
Kazakhstan, Republic of	12,600	11,000	9,950	11,000	11,500	11,500
Morocco	3,357	5,147	5,540	3,043	6,100	6,100
Pakistan	18,227	19,183	19,500	21,500	21,700	21,700
Russian Federation	50,550	34,100	45,400	47,700	41,500	41,500
Turkey	16,800	16,800	18,500	18,000	18,000	18,000
Ukraine	20,556	3,600	17,500	18,700	13,500	13,500
Uzbekistan, Republic of	5,000	5,400	5,500	6,050	5,800	5,800
Others	52,539	52,956	61,706	59,886	55,949	55,589
Subtotal	523,938	490,781	570,107	561,566	547,074	535,826
United States	43,705	63,814	58,738	57,280	49,025	49,316
World Total	567,643	554,595	628,845	618,846	596,099	585,142
Total Consumption						
Algeria	6,650	6,800	7,300	7,500	7,700	7,700
Australia	6,178	5,956	6,200	6,400	6,700	6,400
Brazil	9,890	9,800	10,200	10,800	10,600	10,600
Canada	8,181	7,637	9,230	9,203	9,000	9,100
China, Peoples Republic of	105,200	104,500	102,000	101,000	101,000	101,000
Egypt	12,800	13,300	14,200	14,800	15,600	15,600
EU-25	118,100	107,900	115,200	119,500	117,000	116,000
India	74,294	68,258	72,838	69,971	72,500	72,500
Iran	14,350	14,300	14,500	14,800	15,200	15,200
Kazakhstan, Republic of	6,800	6,800	7,400	7,400	7,600	7,600
Morocco	6,220	6,400	6,900	7,100	7,400	7,400
Pakistan	18,380	19,100	20,000	21,500	22,000	22,000
Russian Federation	39,320	35,500	37,400	38,400	36,400	36,400
Turkey	16,800	16,800	16,800	16,100	16,800	16,800
Ukraine	14,500	9,025	11,700	12,500	10,600	10,600
Others	115,388	116,621	125,087	129,657	129,446	128,751
Subtotal	573,311	555,971	578,248	591,875	584,627	581,912
United States	30,448	32,507	31,823	31,191	31,162	31,163
World Total	603,759	588,478	610,071	623,066	615,789	613,075
Ending Stocks						
Algeria	2,712	2,814	3,506	3,701	3,396	3,396
Canada	5,725	6,080	7,992	9,743	7,792	6,693
China, Peoples Republic of	60,378	43,293	38,819	34,890	37,590	36,090
Egypt	1,316	1,744	2,861	3,935	3,725	3,525
EU-25	16,643	10,602	25,202	20,940	14,315	13,627
Kazakhstan, Republic of	3,673	3,777	3,642	4,292	3,707	3,207
Syria	5,072	5,212	5,252	5,552	5,302	5,302
Others	57,669	44,285	49,480	48,635	38,868	36,078
Subtotal	153,188	117,807	136,754	131,688	114,695	107,918
United States	13,374	14,872	14,699	15,545	11,681	11,382
World Total	166,562	132,679	151,453	147,233	126,376	119,300

Regional Wheat Imports, Production, Consumption, and Stocks

Thousand Metric Tons

	2002/03	2003/04	2004/05	2005/06	Sep 2006/07	Oct 2006/07
TY Imports						
North America	5,501	5,630	5,910	6,136	6,750	6,650
Central America	1,381	1,500	1,510	1,505	1,575	1,575
Caribbean	1,774	1,839	2,034	1,940	1,905	1,905
South America	11,394	11,207	10,826	12,710	12,865	12,940
European Union	13,921	5,912	7,393	7,600	6,800	6,800
Other Europe	1,971	4,229	1,836	1,594	1,575	1,500
Former Soviet Union - 12	4,601	7,260	4,571	4,475	4,040	4,040
Middle East	11,507	8,834	10,219	13,095	11,525	11,425
North Africa	18,714	15,480	18,407	18,550	16,600	16,400
Sub-Saharan Africa	9,603	9,713	12,091	13,026	13,025	12,525
East Asia	12,236	15,320	18,357	12,725	12,050	12,050
South Asia	3,569	3,008	4,832	4,499	9,980	9,880
Southeast Asia	10,663	11,177	11,429	11,926	11,775	11,775
Oceania	896	648	745	751	605	680
Total	107,731	101,757	110,160	110,532	111,070	110,145
Production						
North America	63,133	90,066	87,018	87,075	78,025	78,716
Central America	1	1	1	1	1	1
Caribbean	0	0	0	0	0	0
South America	17,903	23,632	25,261	20,949	19,773	19,273
European Union	124,829	106,878	136,774	122,638	119,175	117,887
Other Europe	12,642	7,564	15,538	13,198	11,600	11,600
Former Soviet Union - 12	96,949	60,910	86,830	92,195	79,885	79,885
Middle East	37,991	39,486	41,463	42,020	41,300	41,300
North Africa	11,704	16,285	17,166	15,178	18,325	18,325
Sub-Saharan Africa	5,190	4,497	4,919	5,625	5,845	5,985
East Asia	91,468	87,750	93,193	98,724	106,295	104,795
South Asia	95,303	90,966	97,696	96,300	95,950	95,950
Southeast Asia	96	107	130	150	148	148
Oceania	10,434	26,453	22,856	24,793	19,777	11,277
Total	567,643	554,595	628,845	618,846	596,099	585,142
Domestic Consumption						
North America	44,529	46,044	47,053	46,494	46,362	46,463
Central America	1,221	1,354	1,404	1,396	1,476	1,476
Caribbean	1,774	1,839	2,034	1,940	1,905	1,905
South America	22,305	23,240	23,493	24,457	24,247	24,052
European Union	118,100	107,900	115,200	119,500	117,000	116,000
Other Europe	13,359	12,870	14,128	13,505	12,930	12,930
Former Soviet Union - 12	75,350	65,874	72,930	75,270	71,350	71,350
Middle East	46,701	46,729	48,975	49,835	50,785	50,735
North Africa	29,666	30,082	32,583	33,775	35,125	35,125
Sub-Saharan Africa	13,894	14,573	16,538	18,048	18,695	18,345
East Asia	117,757	116,539	114,061	113,515	113,115	113,115
South Asia	101,320	96,891	102,228	101,081	104,345	104,245
Southeast Asia	10,440	10,438	11,029	11,665	11,818	11,818
Oceania	7,083	6,831	7,122	7,341	7,555	7,255
Total	603,499	581,204	608,778	617,822	616,708	614,814
Ending Stocks						
North America	19,849	21,695	23,067	25,600	19,969	18,387
Central America	190	185	185	185	185	185
Caribbean	20	20	20	20	20	20
South America	3,170	2,992	2,856	2,847	2,055	1,888
European Union	16,643	10,602	25,202	20,940	14,315	13,627
Other Europe	3,335	2,110	3,949	3,277	2,168	2,012
Former Soviet Union - 12	16,480	10,986	14,270	15,524	11,939	11,439
Middle East	13,375	12,487	12,002	12,234	11,454	11,524
North Africa	5,959	7,467	10,245	9,983	9,718	9,368
Sub-Saharan Africa	1,508	1,108	1,220	1,556	1,356	1,346
East Asia	63,218	46,249	41,934	37,866	40,467	38,961
South Asia	17,915	9,200	7,186	5,766	6,301	6,301
Southeast Asia	1,572	2,030	2,052	1,992	1,679	1,617
Oceania	3,328	5,548	7,265	9,443	4,750	2,625
Total	166,562	132,679	151,453	147,233	126,376	119,300

2002/03	2003/04	2004/05	2005/06	Sep 2006/07	Oct 2006/07
----------------	----------------	----------------	----------------	------------------------	------------------------

NOTES: Regional definitions appear on last page of this circular. Imports are reported on an international year basis. All other data are reported using marketing years.

RICE: WORLD MARKETS AND TRADE

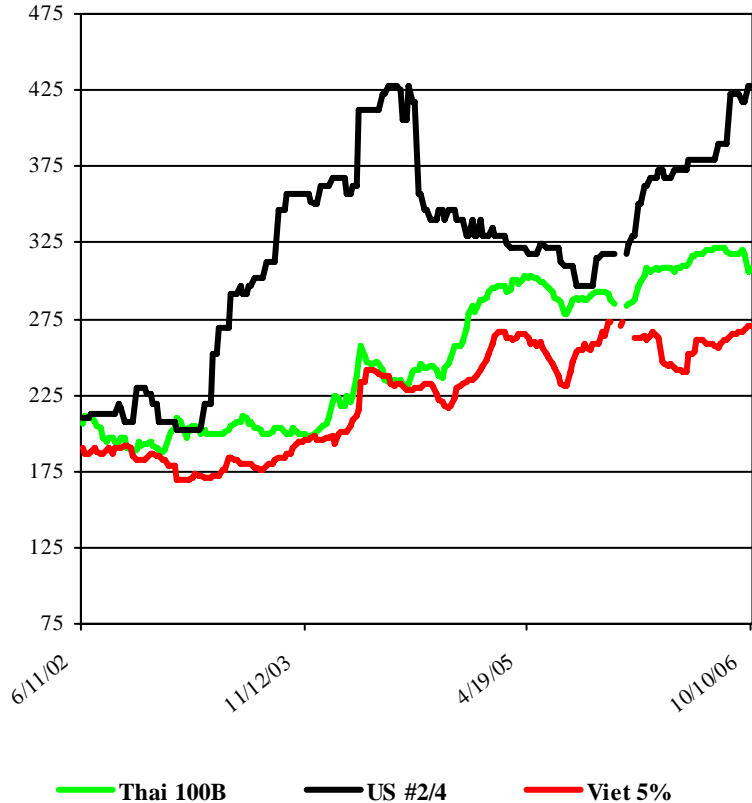
PRICES:

International: Export prices in Thailand dropped sharply (\$10) because of the uncertain political climate, the Government's need to dispose of 3 million tons of intervention stocks, and the unease over the unannounced intervention support price. Indian prices are also down; 5% is currently quoted at \$258 per ton, FOB, off \$5 from last month.

Conversely, Viet 5% is currently quoted at \$271 per ton, FOB, up \$6 due to tightening supplies and loading delays, caused by the monsoon.

Domestic: U.S. #2/4 long grain milled rice is quoted at \$428 per ton, FOB. The spread between comparable qualities of Thai and U.S. rice is \$120 per ton compared to \$25 per ton this time last year. Various traders have indicated that perhaps some U.S. producers are holding supplies for a number of reasons including expectation of even higher prices to help cover the increased costs of production and limited government support payments. Prices for U.S. medium grain rose with #1/4 medium grain milled rice from California quoted at \$525 per ton, FOB, \$50 more than last month. The California harvest continues with more than 58 percent complete.

Nominal Rice Quotes – 2002 to Present



TRADE CHANGES FOR 2007

Selected Exporters

- **Australia** is down 75 percent to only 150,000 tons as exportable supplies are predicted to shrink. Production is slashed 65 percent because of drought conditions.
- **China** is up 100,000 to 900,000 tons with a predicted good exportable supply and the likelihood that the strong 2006 pace will carry over.

Grain: World Markets and Trade, October 2006

-
- **Pakistan** is up 400,000 to 4.3 million tons in expectation of ample exportable supplies.

TRADE CHANGES FOR 2006

Selected Exporters

- **Australia** is down 150,000 to 350,000 tons due to the slower than expected export pace.
- **China** is up 100,000 to 900,000 tons based on a strong export pace.

Selected Importers

- **Cuba** is down 150,000 tons to 600,000 tons due to slow arrivals from primary suppliers.

World Rice Trade
January/December Year, Thousand Metric Tons

	2002/03	2003/04	2004/05	2005/06	2006/07 Sep	2006/07 Oct
TY Exports						
Argentina	170	249	345	400	400	400
Australia	141	131	52	350	600	150
Brazil	19	37	272	250	150	150
Burma, Union of	388	130	190	125	250	250
Cambodia	10	300	200	350	450	450
China, Peoples Republic of	2,583	880	656	1,000	800	1,000
Egypt	579	826	1,095	1,000	800	900
EU-25	220	187	201	175	175	150
Guyana	200	243	182	170	170	170
India	4,421	3,172	4,687	3,800	4,300	4,300
Japan	200	200	200	200	200	200
Pakistan	1,958	1,986	3,032	3,000	2,500	2,900
Thailand	7,552	10,137	7,274	7,300	8,250	8,250
Uruguay	675	804	762	700	750	750
Vietnam	3,795	4,295	5,174	5,200	4,700	4,700
Others	830	517	825	421	365	365
Subtotal	23,741	24,094	25,147	24,441	24,860	25,085
United States	3,834	3,090	3,862	3,700	3,000	3,000
World Total	27,575	27,184	29,009	28,141	27,860	28,085
TY Imports						
Bangladesh	1,112	801	785	600	600	600
Brazil	1,063	762	547	550	650	650
Canada	242	285	321	335	350	350
China, Peoples Republic of	258	1,122	609	700	800	800
Cote d'Ivoire	750	740	867	850	800	800
Cuba	371	639	736	600	700	700
EU-25	950	1,079	968	925	975	925
Ghana	357	425	450	400	450	450
Haiti	345	269	328	400	350	350
Hong Kong	307	309	315	315	315	315
Indonesia	2,750	650	500	900	600	600
Iran	900	950	983	1,200	900	900
Iraq	672	889	786	1,200	1,200	1,200
Japan	654	706	787	650	650	650
Korea, Democratic	633	465	600	400	500	500
Malaysia	500	700	751	750	775	775
Mexico	582	521	553	600	600	600
Mozambique	232	375	350	350	350	350
Nigeria	1,448	1,369	1,777	1,600	1,700	1,700
Philippines	1,300	1,100	1,890	1,900	1,650	1,650
Russian Federation	385	350	350	375	375	375
Saudi Arabia	1,150	1,500	1,357	1,000	1,000	1,000
Senegal	750	850	1,200	750	850	850
Singapore	375	346	375	375	375	375
South Africa, Republic of	725	818	850	800	800	800
Others	6,330	6,815	7,491	7,036	7,106	7,106
Subtotal	25,141	24,835	26,526	25,561	25,421	25,371
Unaccounted	1,976	1,872	2,064	2,015	1,864	2,124
United States	458	477	419	565	575	590
World Total	27,575	27,184	29,009	28,141	27,860	28,085

Note about dates: 2006/07 is calendar year 2007, 2005/06 is calendar year 2006, and so on.

World Rice Production, Consumption, and Stocks
Local Marketing Years, Thousand Metric Tons

	2002/03	2003/04	2004/05	2005/06	2006/07 Sep	2006/07 Oct
Milled Production						
Bangladesh	25,187	26,152	25,600	28,758	29,100	29,100
Brazil	7,050	8,709	8,996	7,800	8,500	8,500
Burma, Union of	10,788	10,730	9,570	10,440	10,700	10,700
Cambodia	2,400	2,960	2,330	2,835	3,025	3,025
China, Peoples Republic of	122,180	112,462	125,363	126,414	128,000	128,000
Egypt	3,705	3,900	4,128	4,130	4,140	4,140
India	71,820	88,530	83,130	91,040	91,000	91,000
Indonesia	33,411	35,024	34,830	34,959	35,088	35,088
Japan	8,089	7,091	7,944	8,257	7,940	7,940
Korea, Republic of	4,927	4,451	5,000	4,768	4,700	4,650
Nigeria	2,200	2,200	2,300	2,700	2,800	2,800
Pakistan	4,479	4,848	4,920	5,547	5,200	5,600
Philippines	8,450	9,200	9,425	9,800	9,750	9,750
Thailand	17,198	18,011	17,360	18,200	18,500	18,500
Vietnam	21,527	22,082	22,716	22,418	22,536	22,536
Others	27,558	29,019	29,413	30,623	30,571	30,015
Subtotal	370,969	385,369	393,025	408,689	411,550	411,344
United States	6,536	6,420	7,462	7,108	6,136	6,105
World Total	377,505	391,789	400,487	415,797	417,686	417,449
Total Consumption						
Bangladesh	26,100	26,700	26,900	29,000	29,750	29,750
Brazil	8,100	8,687	9,001	9,150	9,250	9,250
Burma, Union of	10,100	10,200	10,300	10,400	10,500	10,500
China, Peoples Republic of	135,700	132,100	130,300	128,000	127,800	127,800
Egypt	3,200	3,225	3,250	3,275	3,300	3,300
India	79,860	85,630	80,743	85,220	87,500	87,500
Indonesia	36,500	36,000	35,850	35,800	35,800	35,800
Iran	3,075	3,100	3,125	3,175	3,225	3,225
Japan	8,742	8,357	8,300	8,250	8,200	8,200
Korea, Republic of	5,033	4,613	4,862	4,853	4,841	4,841
Nepal	2,755	2,983	2,867	2,818	2,815	2,815
Nigeria	3,750	4,000	4,250	4,350	4,450	4,450
Philippines	9,550	10,250	10,400	11,000	11,250	11,250
Thailand	9,460	9,470	9,480	9,500	9,570	9,570
Vietnam	17,500	17,850	18,000	18,250	18,500	18,500
Others	41,941	43,572	44,245	45,164	45,887	45,887
Subtotal	403,836	409,261	403,946	409,711	414,731	414,990
United States	3,534	3,656	3,935	3,806	3,969	3,904
World Total	407,370	412,917	407,881	413,517	418,700	418,894
Ending Stocks						
China, Peoples Republic of	63,311	43,915	38,931	37,045	37,445	37,045
India	11,000	10,800	8,500	10,520	9,720	9,720
Indonesia	4,344	4,018	3,448	3,507	3,395	3,395
Japan	2,466	1,700	1,919	2,426	2,616	2,616
Philippines	3,807	4,047	4,572	5,272	5,522	5,522
Thailand	3,302	1,706	2,312	3,762	4,542	4,542
Vietnam	4,065	4,302	4,164	3,482	3,118	3,118
Others	13,398	14,145	12,943	12,897	12,021	11,815
Subtotal	105,693	84,633	76,789	78,911	78,379	77,773
United States	829	761	1,211	1,369	1,012	1,062
World Total	106,522	85,394	78,000	80,280	79,391	78,835

Note: All data are reported on a milled basis.

Regional Rice Imports, Production, Consumption, and Stocks
Thousand Metric Tons

	2002/03	2003/04	2004/05	2005/06	Sep 2006/07	Oct 2006/07
TY Imports						
North America	1,282	1,283	1,293	1,500	1,525	1,540
Central America	416	463	531	480	500	500
Caribbean	820	1,084	1,213	1,215	1,205	1,205
South America	1,449	1,111	966	885	1,050	1,050
European Union	950	1,079	968	925	975	925
Other Europe	209	230	220	220	205	205
Former Soviet Union - 12	540	526	526	551	551	551
Middle East	3,970	4,510	4,485	4,630	4,430	4,430
North Africa	238	225	261	225	225	225
Sub-Saharan Africa	6,901	7,244	8,383	7,130	7,505	7,505
East Asia	2,166	2,948	2,556	2,665	2,655	2,655
South Asia	1,351	1,169	1,051	915	910	910
Southeast Asia	5,063	3,202	4,236	4,560	4,035	4,035
Oceania	244	238	256	225	225	225
Total	25,599	25,312	26,945	26,126	25,996	25,961
Production						
North America	6,669	6,620	7,657	7,289	6,317	6,286
Central America	574	553	466	507	511	511
Caribbean	865	838	666	736	730	730
South America	12,614	14,667	15,346	14,088	14,650	14,650
European Union	1,731	1,728	1,864	1,710	1,736	1,674
Other Europe	15	21	22	21	20	20
Former Soviet Union - 12	690	846	774	854	894	894
Middle East	2,151	2,483	2,611	2,737	2,803	2,803
North Africa	3,746	3,941	4,169	4,171	4,181	4,181
Sub-Saharan Africa	7,025	7,314	7,775	8,662	8,670	8,670
East Asia	137,917	126,628	140,858	142,072	143,234	143,184
South Asia	106,556	124,689	118,781	130,548	130,550	130,950
Southeast Asia	96,639	101,066	99,267	101,653	102,610	102,610
Oceania	313	395	231	749	780	286
Total	377,505	391,789	400,487	415,797	417,686	417,449
Domestic Consumption						
North America	4,476	4,666	5,006	4,916	5,119	5,054
Central America	950	976	1,025	1,056	1,063	1,063
Caribbean	1,610	1,877	1,870	1,855	1,970	1,970
South America	12,876	13,535	13,978	14,273	14,468	14,468
European Union	2,597	2,509	2,529	2,550	2,600	2,600
Other Europe	224	236	227	231	235	235
Former Soviet Union - 12	1,231	1,434	1,354	1,370	1,365	1,365
Middle East	6,694	6,697	6,625	6,997	7,107	7,107
North Africa	3,429	3,491	3,552	3,541	3,566	3,566
Sub-Saharan Africa	14,014	15,016	15,816	16,174	16,332	16,332
East Asia	153,015	148,454	147,042	144,543	144,306	144,306
South Asia	113,800	120,469	115,642	122,244	125,375	125,375
Southeast Asia	89,449	90,493	90,597	91,711	92,546	92,546
Oceania	535	540	545	550	555	555
Total	404,900	410,393	405,808	412,011	416,607	416,542
Ending Stocks						
North America	998	940	1,385	1,549	1,173	1,223
Central America	410	441	383	332	270	270
Caribbean	220	157	206	168	193	193
South America	2,107	3,010	3,509	2,584	2,096	2,096
European Union	960	974	1,134	1,044	1,030	893
Other Europe	45	40	50	60	65	65
Former Soviet Union - 12	308	191	117	132	192	192
Middle East	1,299	1,170	1,719	2,406	2,482	2,482
North Africa	870	719	502	357	397	297
Sub-Saharan Africa	2,708	2,297	2,125	2,007	1,730	1,730
East Asia	67,047	46,764	42,005	40,749	41,332	40,882
South Asia	11,848	12,189	8,933	11,403	10,693	10,693
Southeast Asia	17,070	15,952	15,520	16,978	17,502	17,502
Oceania	632	550	412	511	236	317
Total	106,522	85,394	78,000	80,280	79,391	78,835

2002/03	2003/04	2004/05	2005/06	Sep 2006/07	Oct 2006/07
----------------	----------------	----------------	----------------	------------------------	------------------------

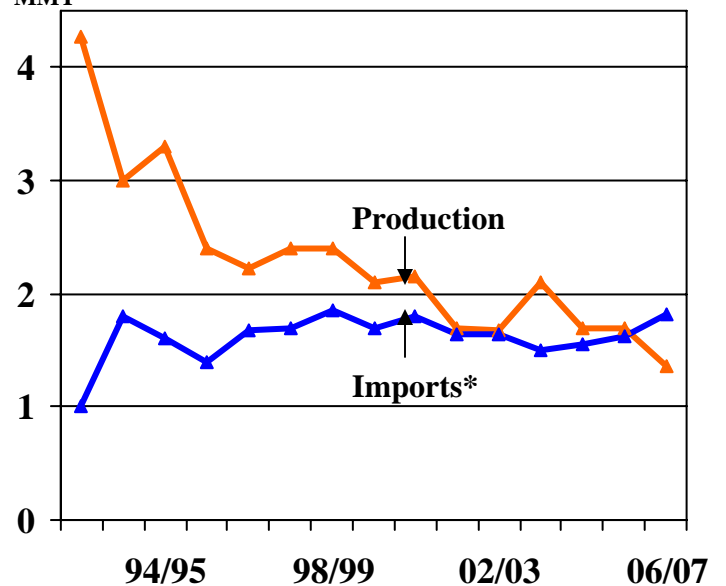
NOTES: Regional definitions appear on last page of this circular. Imports are reported on an international year basis. All other data are reported using marketing years.

COARSE GRAINS: WORLD MARKETS AND TRADE

MONTHLY HIGHLIGHTS:

United States To Import More Oats Than It Produces: For the first time in history, U.S. oat imports are forecast to exceed domestic production as the oat crop has fallen to a record low. Acreage has continued to drop as better returns for other crops have caused farmers to switch out of oats. With a smaller crop and Canadian supplies at 7-year highs, imports are expected to surge to near-record levels. The shipment pace in recent months has already been very strong. Most of the oats imported from Canada are used for milling into oatmeal and other products.

U.S. Oat Production Falls to Record Low

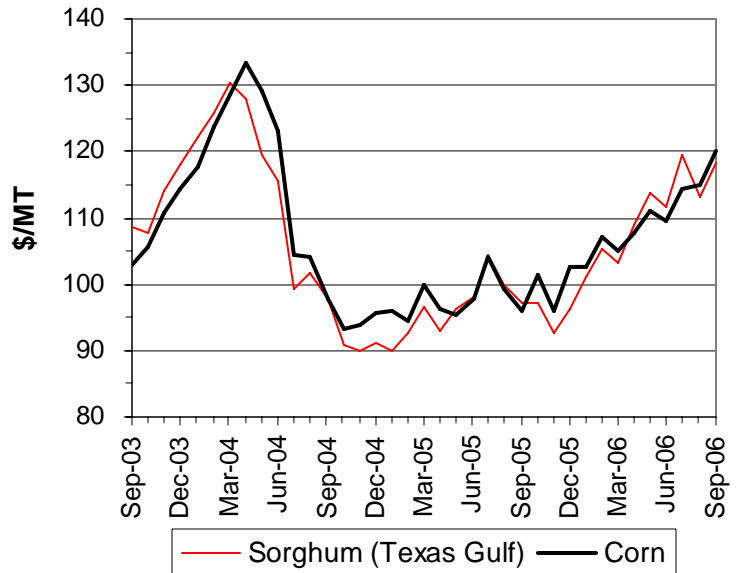


*Marketing Year (June/May)

PRICES:

Domestic: September export bids for #2 yellow corn were up \$5 per ton to \$120, supported by continued strong exports, expanding domestic demand, and high wheat prices. Similarly, bids for #2 yellow sorghum (Texas Gulf) were up \$5 to \$118 per ton, supported by tight U.S. supplies and strong import demand from EU-25.

U.S. Gulf Export Bids



TRADE CHANGES IN 2006/2007

Selected Exporters

-
- **Brazil corn** is raised 500,000 tons to 2.0 million (and by the same amount in 2005/06) because of a slowdown in poultry production and exports and strong international prices for corn.
 - **Serbia and Montenegro corn** is raised by 200,000 tons to 1.0 million--a record--based on record production and strong shipments to EU-25. The same change was made for 2005/06.
 - **Australian barley** is lowered 1.5 million tons to 3.0 million on sharply lower production.
 - **EU-25 barley** is raised 500,000 tons to 3.5 million and **Ukraine barley** is up 200,000 tons to a record 5.2 million because of sharply lower export availability from Australia.
 - **Canada oats** is raised 100,000 tons to 1.7 million on greater expected demand from the United States.

Selected Importers

- **EU-25 corn** is boosted by 500,000 tons to 3.0 million based on the early, rapid pace of import licenses.
- **Indonesia corn** is raised 500,000 tons to 1.3 million because of a significant cut to production.
- **Mexico corn** is cut by 700,000 tons to 6.3 million because of a larger crop.
- **South Korea corn** is up by 200,000 tons to 8.9 million. Very high wheat prices are likely to reduce imports for feeding.
- **Saudi Arabia barley** is down 500,000 tons to 6.0 million because of tight exportable supplies in major exporters, particularly Australia, as well as ample stocks.
- **United States oats** is up by 100,000 tons to 1.8 million on record low production.

TRADE CHANGES IN 2005/2006

Selected Exporters

- **United States corn** is up 500,000 tons to 56.5 million because of continued strong shipments in September.
- **China corn** is dropped 200,000 tons to 3.8 million, the lowest in 7 years.
- **Canada barley** is lowered 400,000 tons to 1.9 million as a result of near-year end trade data. A smaller crop in 2006 has reduced the size of shipments at the end of the trade year.

-
- **Ukraine barley** is up 200,000 tons to 4.5 million on very strong new crop exports in recent months.
 - **Australia sorghum** is cut by 100,000 tons to 200,000 because of slow shipments late in the trade year, likely caused by tight feed grain supplies arising from Australia's current drought situation.
 - **Canada oats** is raised 300,000 tons to 1.7 million as strong demand from the United States and large supplies boosted new crop shipments in August and September.

Selected Importers

- **EU-25, Morocco, Peru, South Africa, and South Korea corn** are all adjusted based on recent trade data. Morocco and Peru imports are at record levels; South Africa is at the highest in 13 years.
- **Mexico corn** is cut by 300,000 tons to 6.7 million--still a record--because of a larger crop and slower than anticipated shipments late in the season.
- **Morocco barley** is cut by 200,000 tons to 500,000 tons. Larger new crop supplies have led to reduced import shipments during the past few months.
- **Mexico sorghum** is lowered 200,000 tons to 3.2 million because of slow shipments late in the season. Ample corn production plus imports (including cracked corn) appear to be sufficient to meet the country's feed grain needs.
- **United States oats** is up by 200,000 tons to 1.8 million on very strong shipments from Canada in August and September.

World Coarse Grain Trade
October/September Year, Thousand Metric Tons

	2002/03	2003/04	2004/05	2005/06	2006/07 Sep	2006/07 Oct
TY Exports						
Argentina	13,055	10,834	14,371	10,555	11,455	11,455
Australia	2,472	6,752	4,996	5,920	4,895	3,395
Brazil	3,246	6,191	1,457	2,425	1,550	2,050
Canada	1,712	3,474	3,217	3,975	3,425	3,525
China, Peoples Republic of	15,336	7,723	7,617	3,825	4,025	4,025
EU-25	9,736	2,342	5,078	3,305	4,155	4,655
Romania	243	93	895	500	700	700
Russian Federation	3,494	1,767	1,534	1,650	2,200	2,200
Serbia and Montenegro	366	63	593	1,005	805	1,005
Ukraine	3,420	3,811	6,465	7,005	6,800	7,000
Others	5,167	5,615	5,179	4,775	3,365	3,375
Subtotal	58,247	48,665	51,402	45,390	43,375	43,385
United States	46,428	54,077	50,692	61,895	61,735	61,735
World Total	104,675	102,742	102,094	107,285	105,110	105,120
TY Imports						
Algeria	1,696	1,788	2,174	2,105	2,055	2,055
Brazil	935	596	745	615	1,000	1,000
Canada	4,098	2,081	2,339	1,870	2,870	2,870
Chile	1,110	1,148	1,189	1,515	1,515	1,515
China, Peoples Republic of	1,830	1,533	2,073	2,205	2,335	2,335
Colombia	2,428	2,232	2,516	3,230	3,305	3,325
Dominican Republic	906	824	1,031	1,100	1,150	1,150
Egypt	4,867	3,747	5,405	4,320	4,820	4,820
EU-25	6,721	7,353	3,766	3,470	2,945	3,445
Indonesia	1,633	1,436	541	1,300	800	1,300
Iran	2,157	2,518	3,849	3,500	3,700	3,500
Israel	1,382	2,012	1,700	1,425	1,675	1,675
Japan	20,321	19,982	19,709	19,820	19,470	19,470
Jordan	820	771	938	1,050	900	900
Korea, Republic of	8,886	8,992	8,715	8,915	8,830	9,030
Libya	322	531	693	600	700	700
Malaysia	2,408	2,401	2,406	2,500	2,600	2,600
Mexico	8,766	8,873	8,975	10,000	10,200	9,500
Morocco	1,212	1,326	1,989	2,040	1,755	1,905
Peru	992	1,114	1,366	1,600	1,400	1,400
Saudi Arabia	8,927	7,130	7,644	7,900	8,000	7,500
South Africa, Republic of	750	612	277	980	825	825
Syria	1,198	1,541	2,281	2,100	2,400	2,400
Taiwan	4,829	5,114	4,757	4,950	4,950	4,950
Tunisia	1,046	883	1,228	1,300	1,250	1,250
Others	11,030	10,952	10,559	10,970	9,315	9,215
Subtotal	101,270	97,490	98,865	101,555	100,765	100,635
Unaccounted	862	3,011	987	3,430	1,895	2,035
United States	2,543	2,241	2,242	2,300	2,450	2,450
World Total	104,675	102,742	102,094	107,285	105,110	105,120

World Coarse Grains Production, Consumption, and Stocks
Local Marketing Years, Thousand Metric Tons

	2002/03	2003/04	2004/05	2005/06	2006/07 Sep	2006/07 Oct
Production						
Argentina	19,445	18,596	24,902	17,898	21,573	21,573
Australia	6,652	14,861	11,573	13,759	11,055	8,055
Brazil	47,097	44,881	37,874	43,774	43,259	43,259
Canada	19,892	26,326	26,447	26,036	23,740	23,255
China, Peoples Republic of	130,725	123,953	138,252	147,696	146,060	149,260
Ethiopia	4,775	6,560	7,565	9,085	9,425	9,425
EU-25	138,660	122,998	150,749	131,484	127,884	128,098
India	25,660	37,810	33,570	34,390	33,700	33,700
Mexico	26,420	30,277	28,947	25,833	28,430	29,130
Nigeria	19,050	20,300	22,300	23,700	24,200	24,200
Romania	8,365	7,965	13,805	11,839	9,955	9,955
Russian Federation	33,400	30,500	29,600	27,600	29,500	29,500
South Africa, Republic of	10,126	10,363	12,209	7,380	9,438	9,998
Turkey	9,960	10,040	11,045	11,945	11,045	11,045
Ukraine	17,110	15,600	23,000	18,140	19,150	19,150
Others	114,654	119,938	122,752	125,107	125,236	125,036
Subtotal	631,991	640,968	694,590	675,666	673,650	674,639
United States	243,719	275,098	319,417	298,736	295,766	290,120
World Total	875,710	916,066	1,014,007	974,402	969,416	964,759
Domestic Consumption						
Argentina	7,427	7,357	9,058	9,123	9,673	9,673
Brazil	38,585	38,913	41,558	41,872	44,409	42,909
Canada	22,816	23,826	23,804	23,840	24,935	24,735
China, Peoples Republic of	136,401	138,651	141,172	147,355	151,230	151,430
Egypt	11,989	10,277	12,364	11,180	11,680	11,680
EU-25	136,086	135,467	138,817	132,445	133,550	134,325
India	26,750	36,000	33,240	34,230	33,600	33,600
Japan	20,475	20,737	19,878	20,120	19,895	19,895
Mexico	35,533	37,332	38,276	37,780	38,680	38,680
Nigeria	19,000	20,250	22,050	23,450	24,050	24,050
Romania	8,205	8,955	11,005	11,105	11,105	11,105
Russian Federation	29,850	33,250	29,400	27,650	27,950	27,950
South Africa, Republic of	9,072	9,219	10,305	9,648	9,373	9,923
Turkey	10,674	11,186	11,404	11,565	11,465	11,465
Ukraine	13,262	14,000	15,200	11,990	13,050	13,100
Others	160,756	172,098	177,218	186,448	187,335	187,380
Subtotal	687,986	720,325	735,174	742,368	753,761	754,068
United States	214,667	225,958	240,216	244,573	256,985	256,546
World Total	902,653	946,283	975,390	986,941	1,010,746	1,010,614
Ending Stocks						
Brazil	6,360	8,045	4,380	3,922	3,097	3,622
Canada	3,135	4,076	6,341	6,332	4,187	4,197
China, Peoples Republic of	66,369	45,481	37,017	35,738	28,632	31,878
EU-25	21,714	12,622	24,227	22,800	16,400	15,938
Iran	1,781	1,873	2,739	2,739	2,939	2,439
Mexico	3,884	5,678	5,306	3,259	3,209	3,209
Saudi Arabia	2,645	2,434	2,708	2,698	2,888	2,488
Others	33,094	30,732	36,804	34,137	29,414	27,718
Subtotal	138,982	110,941	119,522	110,942	90,766	91,489
United States	30,940	28,764	58,800	54,841	35,029	29,122
World Total	169,922	139,705	178,322	165,783	125,795	120,611

Regional Coarse Grains Imports, Production, Consumption, and Stocks

Thousand Metric Tons

	2002/03	2003/04	2004/05	2005/06	Sep 2006/07	Oct 2006/07
TY Imports						
North America	15,407	13,195	13,556	14,170	15,520	14,820
Central America	1,980	2,178	2,405	2,540	2,500	2,500
Caribbean	1,509	1,634	1,913	2,060	2,185	2,185
South America	6,606	6,383	6,460	7,765	8,070	7,990
European Union	6,721	7,353	3,766	3,470	2,945	3,445
Other Europe	1,196	1,563	689	645	640	640
Former Soviet Union - 12	756	1,440	1,080	1,110	930	930
Middle East	16,952	16,162	17,864	17,205	18,105	17,405
North Africa	9,143	8,275	11,489	10,365	10,580	10,730
Sub-Saharan Africa	2,596	1,665	2,703	3,490	2,105	2,105
East Asia	36,114	35,791	35,616	36,240	35,835	36,035
South Asia	10	32	44	10	0	0
Southeast Asia	4,726	4,046	3,499	4,570	3,780	4,280
Oceania	97	14	23	40	20	20
Total	103,813	99,731	101,107	103,855	103,215	103,085
Production						
North America	290,031	331,701	374,811	350,605	347,936	342,505
Central America	3,060	3,206	2,882	2,889	3,146	3,146
Caribbean	540	535	505	456	456	456
South America	75,735	72,953	72,492	71,322	74,841	74,841
European Union	138,660	122,998	150,749	131,484	127,884	128,098
Other Europe	22,146	18,710	29,052	26,796	23,955	24,405
Former Soviet Union - 12	60,724	55,371	62,945	55,080	57,448	57,448
Middle East	17,508	17,717	18,496	19,186	18,286	18,286
North Africa	9,612	11,757	11,786	9,299	11,692	11,692
Sub-Saharan Africa	68,610	77,614	77,632	81,307	82,157	82,717
East Asia	133,039	126,244	140,589	150,079	148,350	151,500
South Asia	30,464	42,245	38,130	38,950	38,263	38,263
Southeast Asia	18,264	19,543	21,740	22,543	23,300	22,700
Oceania	7,317	15,472	12,198	14,406	11,702	8,702
Total	875,710	916,066	1,014,007	974,402	969,416	964,759
Domestic Consumption						
North America	273,016	287,116	302,296	306,193	320,600	319,961
Central America	4,935	5,070	5,455	5,475	5,725	5,725
Caribbean	2,056	2,112	2,350	2,493	2,618	2,618
South America	59,762	60,728	65,767	66,788	70,520	69,015
European Union	136,086	135,467	138,817	132,445	133,550	134,325
Other Europe	20,986	21,270	24,964	24,933	24,229	24,479
Former Soviet Union - 12	52,781	56,725	54,616	49,429	50,103	50,153
Middle East	30,736	34,351	33,889	35,600	36,430	36,330
North Africa	19,162	18,746	21,891	20,550	21,665	21,815
Sub-Saharan Africa	69,453	76,472	78,507	84,231	83,652	84,202
East Asia	172,955	175,783	177,183	184,049	187,430	187,780
South Asia	31,524	40,573	37,815	38,790	38,163	38,163
Southeast Asia	22,160	21,818	24,140	25,983	26,340	26,340
Oceania	5,936	7,245	7,275	7,415	7,940	7,540
Total	901,548	943,476	974,965	984,994	1,008,965	1,008,446
Ending Stocks						
North America	37,959	38,518	70,447	64,432	42,425	36,528
Central America	375	696	537	444	460	465
Caribbean	74	131	199	222	245	245
South America	8,803	10,612	7,546	7,150	6,236	6,716
European Union	21,714	12,622	24,227	22,800	16,400	15,938
Other Europe	2,981	1,698	4,138	4,502	2,838	2,813
Former Soviet Union - 12	11,967	5,964	7,258	5,580	4,600	4,225
Middle East	6,467	6,457	8,178	7,791	7,989	7,052
North Africa	1,019	2,288	3,327	2,355	2,998	2,962
Sub-Saharan Africa	3,944	5,311	5,317	4,239	4,009	3,419
East Asia	71,262	49,859	41,305	39,750	32,234	35,480
South Asia	826	1,231	1,116	1,011	886	886
Southeast Asia	1,228	1,988	2,075	2,527	2,525	2,432
Oceania	1,303	2,330	2,652	3,663	1,950	1,450
Total	169,922	139,705	178,322	165,783	125,795	120,611

2002/03	2003/04	2004/05	2005/06	Sep 2006/07	Oct 2006/07
----------------	----------------	----------------	----------------	------------------------	------------------------

NOTES: Regional definitions appear on last page of this circular. Imports are reported on an international year basis. All other data are reported using marketing years.

World Corn Trade
October/September Year, Thousand Metric Tons

	2002/03	2003/04	2004/05	2005/06	2006/07 Sep	2006/07 Oct
TY Exports						
Argentina	12,349	10,439	13,752	10,000	11,000	11,000
Brazil	3,181	5,818	1,431	2,400	1,500	2,000
Burma, Union of	113	144	150	250	300	300
China, Peoples Republic of	15,244	7,553	7,589	3,800	4,000	4,000
EU-25	1,995	459	164	100	500	500
Paraguay	733	548	386	350	500	500
Romania	144	93	587	300	600	600
Serbia and Montenegro	353	57	589	1,000	800	1,000
South Africa, Republic of	1,141	797	1,517	1,200	500	500
Ukraine	811	1,238	2,334	2,450	1,800	1,800
Others	1,445	3,284	2,641	2,165	1,525	1,525
Subtotal	37,509	30,430	31,140	24,515	23,025	23,725
United States	40,924	48,808	45,347	56,500	57,000	57,000
World Total	78,433	79,238	76,487	81,015	80,025	80,725
TY Imports						
Algeria	1,643	1,765	2,046	1,900	2,000	2,000
Brazil	639	459	481	450	850	850
Canada	3,846	2,033	2,237	1,800	2,800	2,800
Chile	933	1,043	1,081	1,400	1,400	1,400
Colombia	2,112	1,999	2,256	3,000	3,100	3,100
Costa Rica	514	583	569	600	650	650
Cuba	279	469	546	600	650	650
Dominican Republic	906	824	1,031	1,100	1,150	1,150
Egypt	4,848	3,743	5,398	4,300	4,800	4,800
EU-25	4,327	5,509	2,966	3,000	2,500	3,000
Guatemala	513	513	641	750	600	600
Indonesia	1,633	1,436	541	1,300	800	1,300
Iran	2,157	1,857	2,558	2,300	2,500	2,500
Israel	776	1,377	1,242	1,000	1,200	1,200
Japan	16,863	16,781	16,485	16,700	16,500	16,500
Korea, Republic of	8,786	8,783	8,638	8,800	8,700	8,900
Malaysia	2,408	2,401	2,406	2,500	2,600	2,600
Mexico	5,269	5,739	5,945	6,700	7,000	6,300
Morocco	1,054	1,183	1,423	1,500	1,350	1,500
Peru	917	1,041	1,301	1,500	1,300	1,300
Saudi Arabia	1,424	1,621	1,224	1,400	1,500	1,500
South Africa, Republic of	617	495	131	850	700	700
Syria	919	941	1,781	1,300	1,600	1,600
Taiwan	4,681	4,951	4,562	4,800	4,800	4,800
Tunisia	734	784	714	700	750	750
Others	8,606	7,984	7,798	7,930	6,655	6,555
Subtotal	77,404	76,314	76,001	78,155	78,455	79,005
Unaccounted	655	2,583	205	2,610	1,320	1,470
United States	374	341	281	250	250	250
World Total	78,433	79,238	76,487	81,015	80,025	80,725

World Corn Production, Consumption, and Stocks
Local Marketing Years, Thousand Metric Tons

	2002/03	2003/04	2004/05	2005/06	2006/07 Sep	2006/07 Oct
Production						
Argentina	15,500	15,000	20,500	14,500	17,500	17,500
Brazil	44,500	42,000	35,000	41,000	40,500	40,500
Canada	8,999	9,600	8,840	9,461	9,000	8,800
China, Peoples Republic of	121,300	115,830	130,290	139,365	138,000	141,000
Egypt	6,000	5,740	5,840	5,860	5,870	5,870
EU-25	49,360	39,876	53,478	48,318	44,325	44,325
India	11,100	14,720	14,180	15,090	14,500	14,500
Indonesia	6,100	6,350	7,200	6,900	7,200	6,600
Mexico	19,280	21,800	22,050	19,500	21,300	22,000
Nigeria	5,200	5,500	6,500	7,000	7,500	7,500
Philippines	4,430	4,900	5,050	5,900	5,800	5,800
Romania	7,300	7,020	12,000	10,300	8,800	8,800
Serbia and Montenegro	5,585	3,800	6,569	6,600	6,300	6,600
South Africa, Republic of	9,675	9,700	11,716	7,000	9,000	9,500
Ukraine	4,180	6,850	8,800	7,150	6,000	6,000
Others	56,677	60,201	64,380	66,538	66,886	66,836
Subtotal	375,186	368,887	412,393	410,482	408,481	412,131
United States	227,767	256,278	299,914	282,260	282,303	277,005
World Total	602,953	625,165	712,307	692,742	690,784	689,136
Total Consumption						
Argentina	4,100	4,400	5,200	5,900	6,100	6,100
Brazil	35,800	36,300	38,500	39,000	41,500	40,000
Canada	12,576	11,228	10,314	10,812	12,000	11,800
China, Peoples Republic of	125,900	128,400	131,000	137,000	141,000	141,000
Egypt	10,900	9,200	11,300	10,100	10,600	10,600
EU-25	49,526	46,814	51,700	48,700	48,800	49,300
India	12,000	13,200	13,900	14,600	14,500	14,500
Indonesia	7,500	7,350	7,900	8,100	8,000	8,000
Japan	16,800	17,200	16,500	16,700	16,600	16,600
Korea, Republic of	8,746	8,722	8,666	8,900	8,800	9,000
Mexico	24,700	26,400	27,900	27,900	28,300	28,300
Nigeria	5,200	5,500	6,300	6,800	7,400	7,400
Philippines	4,650	4,950	5,150	5,800	5,900	5,900
Romania	7,200	7,900	9,500	9,700	9,800	9,800
South Africa, Republic of	8,520	8,677	9,700	9,100	8,800	9,300
Others	91,000	98,488	105,764	108,526	109,159	109,359
Subtotal	426,340	435,726	460,365	468,198	479,128	479,278
United States	200,748	211,644	224,648	231,568	245,503	244,867
World Total	627,088	647,370	685,013	699,766	724,631	724,145
Ending Stocks						
Brazil	6,258	7,878	4,192	3,692	2,942	3,442
Canada	1,111	1,143	1,802	2,001	1,513	1,601
China, Peoples Republic of	64,973	44,852	36,555	35,195	28,095	31,295
EU-25	4,826	2,938	7,518	10,036	7,561	7,561
Iran	1,048	1,055	1,413	1,313	1,213	1,213
Korea, Republic of	1,285	1,416	1,466	1,429	1,399	1,399
Mexico	3,238	4,372	4,440	2,640	2,640	2,640
Others	15,095	15,241	19,443	18,186	15,943	15,093
Subtotal	97,834	78,895	76,829	73,447	61,306	64,244
United States	27,603	24,337	53,697	50,055	31,001	25,294
World Total	125,437	103,232	130,526	123,502	92,307	89,538

Regional Corn Imports, Production, Consumption, and Stocks

Thousand Metric Tons

	2002/03	2003/04	2004/05	2005/06	Sep 2006/07	Oct 2006/07
TY Imports						
North America	9,489	8,113	8,463	8,750	10,050	9,350
Central America	1,980	2,178	2,401	2,540	2,500	2,500
Caribbean	1,509	1,634	1,913	2,060	2,185	2,185
South America	5,629	5,805	5,738	7,095	7,465	7,365
European Union	4,327	5,509	2,966	3,000	2,500	3,000
Other Europe	872	1,084	459	365	310	310
Former Soviet Union - 12	179	677	559	550	450	450
Middle East	7,668	7,901	8,039	7,100	8,075	8,075
North Africa	8,413	7,673	10,013	8,800	9,300	9,450
Sub-Saharan Africa	2,293	1,333	2,147	2,855	1,745	1,745
East Asia	30,607	30,687	30,049	30,725	30,350	30,550
South Asia	7	32	40	10	0	0
Southeast Asia	4,721	4,021	3,492	4,560	3,775	4,275
Oceania	84	8	3	20	0	0
Total	77,778	76,655	76,282	78,405	78,705	79,255
Production						
North America	256,046	287,678	330,804	311,221	312,603	307,805
Central America	2,676	2,874	2,552	2,582	2,820	2,820
Caribbean	415	407	377	328	328	328
South America	67,415	64,550	63,132	63,216	66,016	66,016
European Union	49,360	39,876	53,478	48,318	44,325	44,325
Other Europe	17,767	15,130	23,699	22,183	20,010	20,310
Former Soviet Union - 12	8,548	11,530	15,385	13,125	11,925	11,925
Middle East	3,763	4,382	4,732	5,432	4,932	4,932
North Africa	6,202	5,942	6,042	6,062	6,072	6,072
Sub-Saharan Africa	34,549	37,446	40,799	38,033	40,782	41,282
East Asia	123,074	117,679	132,145	141,277	139,839	142,789
South Asia	14,707	17,875	17,300	18,210	17,620	17,620
Southeast Asia	17,972	19,246	21,380	22,183	22,940	22,340
Oceania	459	550	482	572	572	572
Total	602,953	625,165	712,307	692,742	690,784	689,136
Domestic Consumption						
North America	238,024	249,272	262,862	270,280	285,803	284,967
Central America	4,570	4,735	5,100	5,165	5,400	5,400
Caribbean	1,931	1,984	2,222	2,365	2,490	2,490
South America	51,291	52,805	56,333	58,240	61,590	60,090
European Union	49,526	46,814	51,700	48,700	48,800	49,300
Other Europe	16,906	17,270	20,174	20,404	20,025	20,125
Former Soviet Union - 12	7,921	11,009	12,706	11,705	10,880	10,880
Middle East	10,642	12,208	12,221	12,656	13,181	13,181
North Africa	14,334	13,298	15,702	14,700	15,400	15,550
Sub-Saharan Africa	34,576	37,030	40,548	41,328	41,677	42,177
East Asia	158,211	161,385	163,078	169,725	173,341	173,491
South Asia	15,573	16,493	17,034	17,720	17,620	17,620
Southeast Asia	21,896	21,515	23,797	25,638	26,000	26,000
Oceania	465	555	465	580	555	555
Total	625,866	646,373	683,942	700,251	722,762	721,826
Ending Stocks						
North America	31,952	29,852	59,939	54,696	35,154	29,535
Central America	329	654	521	427	442	447
Caribbean	74	131	199	222	245	245
South America	7,991	9,496	6,512	6,398	5,469	5,969
European Union	4,826	2,938	7,518	10,036	7,561	7,561
Other Europe	2,462	1,175	3,404	3,847	2,367	2,342
Former Soviet Union - 12	1,528	1,361	2,165	1,610	1,430	1,280
Middle East	1,976	1,985	2,400	2,101	1,927	1,927
North Africa	338	805	996	1,071	1,030	1,043
Sub-Saharan Africa	3,396	3,861	4,409	2,505	2,605	2,005
East Asia	68,921	48,417	39,985	38,462	31,110	34,310
South Asia	379	536	392	642	442	442
Southeast Asia	1,220	1,983	2,049	2,501	2,499	2,406
Oceania	45	38	37	29	26	26
Total	125,437	103,232	130,526	123,502	92,307	89,538

2002/03	2003/04	2004/05	2005/06	Sep 2006/07	Oct 2006/07
----------------	----------------	----------------	----------------	------------------------	------------------------

NOTES: Regional definitions appear on last page of this circular. Imports are reported on an international year basis. All other data are reported using marketing years.

World Barley Trade
October/September Year, Thousand Metric Tons

	2002/03	2003/04	2004/05	2005/06	2006/07 Sep	2006/07 Oct
TY Exports						
Argentina	101	167	338	300	200	200
Australia	2,159	6,104	4,481	5,500	4,500	3,000
Bulgaria	154	20	400	200	150	150
Canada	304	1,937	1,476	1,900	1,500	1,500
EU-25	6,307	984	3,881	2,500	3,000	3,500
Kazakhstan, Republic of	542	613	100	100	300	300
Romania	99	0	308	200	100	100
Russian Federation	3,066	1,736	1,488	1,600	2,200	2,200
Serbia and Montenegro	13	6	4	5	5	5
Syria	446	320	50	50	50	50
Turkey	504	0	26	550	50	50
Ukraine	2,334	2,557	3,992	4,500	5,000	5,200
Others	183	2	0	0	0	0
Subtotal	16,212	14,446	16,544	17,355	17,055	16,255
United States	552	384	771	350	400	400
World Total	16,764	14,830	17,315	17,705	17,455	16,655
TY Imports						
Brazil	296	128	182	150	150	150
China, Peoples Republic of	1,792	1,519	2,049	2,100	2,200	2,200
Colombia	226	181	234	200	200	200
EU-25	1,443	672	554	300	350	350
Iran	0	661	1,291	1,200	1,200	1,000
Israel	448	508	313	300	400	400
Japan	1,399	1,359	1,522	1,400	1,400	1,400
Jordan	414	400	607	700	600	600
Kuwait	116	62	214	200	200	200
Libya	188	333	261	200	300	300
Morocco	156	143	565	500	400	400
Russian Federation	275	438	266	250	250	250
Saudi Arabia	7,502	5,508	6,420	6,500	6,500	6,000
Syria	279	600	500	800	800	800
Tunisia	312	99	514	600	500	500
Others	1,411	1,496	1,215	1,510	1,230	1,230
Subtotal	16,257	14,107	16,707	16,910	16,680	15,980
Unaccounted	225	226	451	645	375	375
United States	282	497	157	150	400	300
World Total	16,764	14,830	17,315	17,705	17,455	16,655

World Barley Production, Consumption, and Stocks
Local Marketing Years, Thousand Metric Tons

	2002/03	2003/04	2004/05	2005/06	2006/07 Sep	2006/07 Oct
Production						
Algeria	416	1,220	1,314	400	1,450	1,450
Australia	3,865	10,387	7,708	9,869	7,500	4,500
Belarus	1,681	1,800	2,000	1,800	1,350	1,350
Canada	7,489	12,328	13,186	12,481	10,300	10,000
China, Peoples Republic of	3,322	2,717	3,222	3,400	3,500	3,500
Ethiopia	1,200	1,410	1,575	1,785	1,800	1,800
EU-25	56,509	54,826	61,753	52,917	54,413	55,013
India	1,500	1,410	1,310	1,080	1,400	1,400
Iran	3,085	2,900	2,900	2,900	2,900	2,900
Iraq	1,000	1,150	1,250	1,250	1,250	1,250
Kazakhstan, Republic of	2,200	2,100	1,500	1,500	1,500	1,500
Morocco	1,669	2,620	2,760	1,102	2,500	2,500
Russian Federation	18,700	18,000	17,200	15,800	18,000	18,000
Turkey	7,200	6,900	7,400	7,600	7,200	7,200
Ukraine	10,364	6,850	11,100	9,000	11,500	11,500
Others	9,707	10,229	11,951	10,618	10,200	10,350
Subtotal	129,907	136,847	148,129	133,502	136,763	134,213
United States	4,940	6,059	6,091	4,613	3,984	3,920
World Total	134,847	142,906	154,220	138,115	140,747	138,133
Total Consumption						
Australia	2,700	3,050	3,200	3,400	3,900	3,500
Belarus	1,700	1,750	1,900	1,975	1,500	1,500
Canada	7,905	9,893	10,767	10,420	10,200	10,200
China, Peoples Republic of	4,900	4,700	5,350	5,450	5,650	5,650
Ethiopia	1,200	1,410	1,575	1,785	1,800	1,800
EU-25	54,400	56,877	52,900	52,500	54,300	54,800
India	1,500	1,400	1,300	1,100	1,400	1,400
Iran	2,900	3,100	3,500	3,900	4,100	4,100
Japan	1,600	1,630	1,650	1,650	1,650	1,650
Morocco	2,000	2,300	2,700	2,450	2,600	2,600
Russian Federation	15,500	18,600	16,500	15,500	16,100	16,100
Saudi Arabia	5,810	7,010	5,410	6,210	6,310	6,210
Syria	1,100	1,250	1,350	1,450	1,550	1,550
Turkey	6,800	7,100	7,300	7,300	7,200	7,200
Ukraine	7,400	6,200	6,400	4,900	6,700	6,700
Others	14,216	14,925	16,644	16,129	16,278	16,428
Subtotal	131,204	142,557	137,559	138,160	141,113	141,271
United States	5,179	4,990	5,672	4,571	4,246	4,246
World Total	136,383	147,547	143,231	142,731	145,359	145,517
Ending Stocks						
Algeria	291	611	876	626	1,026	1,026
Australia	948	1,887	2,134	3,103	1,603	1,103
Canada	1,475	2,102	3,435	3,289	1,670	1,639
EU-25	8,488	4,287	10,706	8,223	6,186	5,786
Iran	733	818	1,326	1,426	1,726	1,226
Russian Federation	4,706	2,227	2,110	960	910	910
Saudi Arabia	2,611	2,399	2,672	2,662	2,852	2,452
Others	6,440	5,611	7,495	6,297	5,830	5,494
Subtotal	25,692	19,942	30,754	26,584	21,803	19,636
United States	1,510	2,619	2,796	2,350	2,090	1,916
World Total	27,202	22,561	33,550	28,934	23,893	21,552

Regional Barley Imports, Production, Consumption, and Stocks

Thousand Metric Tons

	2002/03	2003/04	2004/05	2005/06	Sep 2006/07	Oct 2006/07
TY Imports						
North America	514	567	291	250	500	400
South America	772	440	538	550	535	535
European Union	1,443	672	554	300	350	350
Other Europe	235	384	172	190	240	240
Former Soviet Union - 12	333	706	327	470	330	330
Middle East	9,081	8,112	9,619	9,960	9,935	9,235
North Africa	721	601	1,473	1,520	1,270	1,270
Sub-Saharan Africa	97	69	102	100	100	100
East Asia	3,340	3,047	3,768	3,700	3,800	3,800
South Asia	2	0	0	0	0	0
Oceania	1	6	20	20	20	20
Total	16,539	14,604	16,864	17,060	17,080	16,280
Production						
North America	13,166	19,469	20,209	17,847	15,184	14,820
South America	1,399	2,039	2,058	1,802	1,895	1,895
European Union	56,509	54,826	61,753	52,917	54,413	55,013
Other Europe	3,208	2,395	4,119	3,381	2,717	2,867
Former Soviet Union - 12	34,072	29,631	33,160	29,385	33,695	33,695
Middle East	12,438	12,116	12,540	12,530	12,130	12,130
North Africa	2,430	4,795	4,719	2,212	4,595	4,595
Sub-Saharan Africa	1,485	1,764	1,871	2,132	2,175	2,175
East Asia	3,839	3,136	3,678	3,845	3,925	3,925
South Asia	1,995	1,970	2,025	1,795	2,118	2,118
Oceania	4,306	10,765	8,088	10,269	7,900	4,900
Total	134,847	142,906	154,220	138,115	140,747	138,133
Domestic Consumption						
North America	13,884	15,833	17,389	15,941	15,396	15,396
South America	1,950	2,189	2,330	2,220	2,225	2,225
European Union	54,400	56,877	52,900	52,500	54,300	54,800
Other Europe	2,810	2,700	3,495	3,205	2,885	3,035
Former Soviet Union - 12	27,616	29,506	27,550	25,094	27,050	27,050
Middle East	18,627	20,750	20,232	21,575	21,930	21,830
North Africa	3,839	4,427	5,164	4,780	5,230	5,230
Sub-Saharan Africa	1,612	1,774	1,986	2,200	2,265	2,265
East Asia	6,949	6,719	7,457	7,560	7,760	7,760
South Asia	1,998	1,960	2,015	1,815	2,118	2,118
Oceania	3,125	3,450	3,600	3,800	4,325	3,925
Total	136,810	146,185	144,118	140,672	145,484	145,634
Ending Stocks						
North America	3,027	4,921	6,470	5,731	3,852	3,647
South America	267	404	331	163	218	168
European Union	8,488	4,287	10,706	8,223	6,186	5,786
Other Europe	455	470	683	606	423	423
Former Soviet Union - 12	7,445	3,727	4,165	3,167	2,642	2,442
Middle East	4,448	4,429	5,742	5,654	6,026	5,089
North Africa	640	1,442	2,291	1,244	1,928	1,879
Sub-Saharan Africa	3	58	93	125	135	135
East Asia	1,388	850	839	824	789	789
South Asia	24	34	44	24	24	24
Oceania	1,017	1,939	2,186	3,175	1,670	1,170
Total	27,202	22,561	33,550	28,934	23,893	21,552

NOTES: Regional definitions appear on last page of this circular. Imports are reported on an international year basis. All other data are reported using marketing years.

World Sorghum Trade
October/September Year, Thousand Metric Tons

	2002/03	2003/04	2004/05	2005/06	2006/07 Sep	2006/07 Oct
TY Exports						
Argentina	604	228	279	250	250	250
Australia	75	425	370	200	250	250
Brazil	64	371	24	25	50	50
China, Peoples Republic of	88	168	28	25	25	25
India	6	42	24	25	25	25
Nigeria	50	50	50	50	50	50
Sudan	10	10	5	25	25	25
Others	104	67	45	55	45	45
Subtotal	1,001	1,361	825	655	720	720
United States	4,911	4,845	4,541	5,000	4,300	4,300
World Total	5,912	6,206	5,366	5,655	5,020	5,020
TY Imports						
Chile	58	62	71	65	65	65
Eritrea	50	55	81	25	25	25
EU-25	439	1,139	226	150	75	75
Israel	69	104	34	50	50	50
Japan	1,562	1,434	1,374	1,350	1,300	1,300
Mexico	3,384	3,002	2,931	3,200	3,100	3,100
Niger	25	50	50	50	50	50
Somalia	1	0	18	25	25	25
Sudan	15	15	160	250	100	100
Taiwan	64	61	61	50	50	50
Others	210	235	227	265	70	70
Subtotal	5,877	6,157	5,233	5,480	4,910	4,910
Unaccounted	34	49	132	175	110	110
United States	1	0	1	0	0	0
World Total	5,912	6,206	5,366	5,655	5,020	5,020

World Sorghum Production, Consumption, and Stocks
Local Marketing Years, Thousand Metric Tons

	2002/03	2003/04	2004/05	2005/06	2006/07 Sep	2006/07 Oct
Production						
Argentina	2,800	2,200	2,900	2,200	2,800	2,800
Australia	1,465	2,009	2,177	2,019	2,100	2,100
Brazil	1,900	2,103	2,051	1,850	1,900	1,900
Burkina	1,260	1,520	1,400	1,837	1,500	1,500
China, Peoples Republic of	3,327	2,865	2,328	2,546	2,200	2,400
Egypt	900	900	900	900	900	900
Ethiopia	1,100	1,700	2,150	2,800	2,900	2,900
EU-25	701	380	470	470	480	480
India	7,060	7,330	7,240	7,790	7,800	7,800
Mexico	6,338	7,300	5,890	5,500	6,150	6,150
Niger	700	720	500	750	650	650
Nigeria	7,850	9,000	10,000	10,500	10,500	10,500
Sudan	2,930	5,190	2,700	4,230	3,700	3,700
Tanzania, United Republic	835	500	820	890	800	800
Uganda	350	375	375	380	380	380
Others	4,064	4,386	4,314	4,277	4,338	4,398
Subtotal	43,580	48,478	46,215	48,939	49,098	49,358
United States	9,163	10,446	11,523	10,005	7,738	7,651
World Total	52,743	58,924	57,738	58,944	56,836	57,009
Total Consumption						
Argentina	2,250	1,950	2,600	2,200	2,500	2,500
Australia	1,405	1,405	1,905	1,705	1,855	1,855
Brazil	1,850	1,650	2,100	1,800	1,900	1,900
Burkina	1,260	1,520	1,400	1,837	1,500	1,500
China, Peoples Republic of	2,825	3,000	2,400	2,500	2,200	2,400
Egypt	900	900	900	900	900	900
Ethiopia	1,105	1,700	2,150	2,200	3,000	3,000
EU-25	677	1,966	700	550	550	625
India	7,150	7,350	7,200	7,700	7,700	7,700
Japan	1,575	1,500	1,400	1,400	1,375	1,375
Mexico	9,900	9,800	9,300	8,800	9,300	9,300
Niger	725	750	550	750	675	675
Nigeria	7,800	8,950	9,950	10,450	10,450	10,450
Sudan	3,500	4,500	3,500	4,200	4,000	4,000
Tanzania, United Republic	860	500	820	890	800	800
Others	4,742	5,012	5,050	5,087	4,997	5,047
Subtotal	48,722	52,473	52,022	52,869	53,703	53,953
United States	4,939	5,638	6,255	4,843	3,683	3,937
World Total	53,661	58,111	58,277	57,712	57,386	57,890
Ending Stocks						
Argentina	370	429	378	228	278	278
China, Peoples Republic of	547	247	156	187	131	177
Ethiopia	0	0	0	600	500	500
India	123	61	80	145	220	220
Mexico	601	1,103	624	524	474	474
Nigeria	200	200	200	200	200	200
Sudan	263	958	313	568	343	343
Others	682	842	956	914	735	770
Subtotal	2,786	3,840	2,707	3,730	2,881	2,962
United States	1,093	852	1,446	1,655	1,155	1,178
World Total	3,879	4,692	4,153	5,385	4,036	4,140

Regional Sorghum Imports, Production, Consumption, and Stocks

Thousand Metric Tons

	2002/03	2003/04	2004/05	2005/06	Sep 2006/07	Oct 2006/07
TY Imports						
North America	3,385	3,002	2,932	3,200	3,100	3,100
Central America	0	0	4	0	0	0
Caribbean	0	0	0	0	0	0
South America	123	104	158	90	65	65
European Union	439	1,139	226	150	75	75
Other Europe	34	24	7	10	10	10
Middle East	71	105	34	50	50	50
North Africa	1	0	0	35	0	0
Sub-Saharan Africa	187	232	412	510	235	235
East Asia	1,632	1,526	1,450	1,425	1,370	1,370
South Asia	1	0	4	0	0	0
Southeast Asia	5	25	7	10	5	5
Oceania	0	0	0	0	0	0
Total	5,878	6,157	5,234	5,480	4,910	4,910
Production						
North America	15,501	17,746	17,413	15,505	13,888	13,801
Central America	384	332	330	307	326	326
Caribbean	125	128	128	128	128	128
South America	5,473	5,075	5,777	4,890	5,551	5,551
European Union	701	380	470	470	480	480
Other Europe	5	5	5	5	5	5
Middle East	553	485	485	485	485	485
North Africa	915	915	915	915	915	915
Sub-Saharan Africa	16,882	21,270	20,020	23,434	22,508	22,568
East Asia	3,344	2,882	2,348	2,566	2,220	2,420
South Asia	7,263	7,560	7,470	8,020	8,030	8,030
Southeast Asia	132	137	200	200	200	200
Oceania	1,465	2,009	2,177	2,019	2,100	2,100
Total	52,743	58,924	57,738	58,944	56,836	57,009
Domestic Consumption						
North America	14,839	15,438	15,555	13,643	12,983	13,237
Central America	365	335	355	310	325	325
Caribbean	125	128	128	128	128	128
South America	4,988	4,459	5,594	4,906	5,326	5,326
European Union	677	1,966	700	550	550	625
Other Europe	39	29	12	15	15	15
Middle East	610	590	527	535	535	535
North Africa	916	915	915	950	915	915
Sub-Saharan Africa	17,557	20,500	20,989	22,970	22,993	23,043
East Asia	4,484	4,603	3,886	3,985	3,650	3,850
South Asia	7,354	7,580	7,431	7,930	7,930	7,930
Southeast Asia	104	143	183	185	180	180
Oceania	1,405	1,405	1,905	1,705	1,855	1,855
Total	53,463	58,091	58,180	57,448	57,385	57,964
Ending Stocks						
North America	1,694	1,955	2,070	2,179	1,629	1,652
Central America	46	42	16	17	18	18
Caribbean	0	0	0	0	0	0
South America	447	608	585	479	444	469
European Union	68	32	21	31	31	31
Other Europe	0	0	0	0	0	0
Middle East	43	43	36	36	36	36
North Africa	40	40	39	39	39	39
Sub-Saharan Africa	530	1,380	803	1,597	1,257	1,267
East Asia	826	463	347	328	197	243
South Asia	123	61	80	145	220	220
Southeast Asia	8	5	26	26	26	26
Oceania	54	63	130	144	139	139
Total	3,879	4,692	4,153	5,385	4,036	4,140

2002/03	2003/04	2004/05	2005/06	Sep 2006/07	Oct 2006/07
----------------	----------------	----------------	----------------	------------------------	------------------------

NOTES: Regional definitions appear on last page of this circular. Imports are reported on an international year basis. All other data are reported using marketing years.

World Oats Trade
October/September Year, Thousand Metric Tons

	2002/03	2003/04	2004/05	2005/06	2006/07 Sep	2006/07 Oct
TY Exports						
Argentina	1	0	2	5	5	5
Australia	145	210	137	200	125	125
Canada	1,058	984	1,374	1,700	1,600	1,700
Chile	12	44	29	25	15	25
EU-25	794	443	354	250	250	250
Kazakhstan, Republic of	1	5	5	5	5	5
Others	9	12	21	5	0	0
Subtotal	2,020	1,698	1,922	2,190	2,000	2,110
United States	39	38	31	40	30	30
World Total	2,059	1,736	1,953	2,230	2,030	2,140
TY Imports						
Algeria	7	1	2	5	5	5
Bosnia and Herzegovina	5	5	6	5	5	5
Canada	49	19	16	20	20	20
China, Peoples Republic of	7	9	13	20	20	20
Colombia	28	23	26	25	5	25
EU-25	11	11	6	10	10	10
Japan	83	67	67	70	70	70
Mexico	82	91	51	50	50	50
Morocco	1	0	1	5	5	5
South Africa, Republic of	19	31	42	25	25	25
Switzerland	34	38	26	50	50	50
Others	6	29	9	5	0	0
Subtotal	332	324	265	490	265	285
Unaccounted	-50	110	59	-60	65	55
United States	1,777	1,302	1,629	1,800	1,700	1,800
World Total	2,059	1,736	1,953	2,230	2,030	2,140

World Oats Production, Consumption, and Stocks
Local Marketing Years, Thousand Metric Tons

	2002/03	2003/04	2004/05	2005/06	2006/07 Sep	2006/07 Oct
Production						
Argentina	500	348	508	350	400	400
Australia	957	2,018	1,321	1,416	1,000	1,000
Belarus	575	500	770	600	550	550
Brazil	390	413	433	517	475	475
Canada	2,911	3,691	3,683	3,432	3,800	3,800
Chile	420	425	425	420	380	380
China, Peoples Republic of	600	600	600	600	600	600
EU-25	9,280	8,623	8,755	7,386	7,778	7,778
Kazakhstan, Republic of	100	100	140	140	140	140
Norway	279	333	359	349	349	349
Romania	350	350	350	350	350	350
Russian Federation	5,700	5,200	4,950	4,550	4,800	4,800
Serbia and Montenegro	125	110	120	120	120	120
Turkey	290	285	290	290	290	290
Ukraine	943	925	1,000	800	900	900
Others	495	555	547	559	557	557
Subtotal	23,915	24,476	24,251	21,879	22,489	22,489
United States	1,684	2,096	1,679	1,667	1,559	1,361
World Total	25,599	26,572	25,930	23,546	24,048	23,850
Total Consumption						
Argentina	525	359	500	350	400	400
Australia	800	1,705	1,175	1,200	1,075	1,075
Belarus	600	500	700	650	550	550
Brazil	382	410	425	515	475	475
Canada	1,870	2,187	2,194	2,118	2,200	2,200
Chile	430	380	400	400	375	350
China, Peoples Republic of	600	610	610	620	620	620
EU-25	8,287	8,276	8,330	7,350	7,500	7,500
Kazakhstan, Republic of	100	95	135	135	135	135
Mexico	133	182	126	130	130	130
Norway	280	340	360	350	350	350
Romania	350	350	350	350	350	350
Russian Federation	6,300	5,600	4,900	4,600	4,800	4,800
Turkey	290	288	290	290	290	290
Ukraine	950	950	1,000	800	900	900
Others	743	747	760	787	760	780
Subtotal	22,692	23,204	22,332	20,705	20,950	20,949
United States	3,480	3,389	3,297	3,287	3,248	3,189
World Total	26,172	26,593	25,629	23,992	24,198	24,138
Ending Stocks						
Argentina	77	77	83	78	73	73
Australia	187	290	299	315	115	115
Canada	524	788	974	872	874	792
China, Peoples Republic of	107	106	109	109	109	109
EU-25	1,010	834	914	744	748	782
Norway	38	33	34	33	32	32
Russian Federation	575	184	240	190	190	190
Others	156	123	183	127	129	134
Subtotal	2,674	2,435	2,836	2,468	2,270	2,227
United States	723	941	841	763	769	716
World Total	3,397	3,376	3,677	3,231	3,039	2,943

Regional Oats Imports, Production, Consumption, and Stocks
Thousand Metric Tons

	2002/03	2003/04	2004/05	2005/06	Sep 2006/07	Oct 2006/07
TY Imports						
North America	1,908	1,412	1,696	1,870	1,770	1,870
South America	30	34	26	30	5	25
European Union	11	11	6	10	10	10
Other Europe	41	47	34	55	55	55
Former Soviet Union - 12	2	9	7	0	0	0
Middle East	0	5	0	0	0	0
North Africa	8	1	3	10	10	10
Sub-Saharan Africa	19	31	42	25	25	25
East Asia	90	76	80	90	90	90
Oceania	0	0	0	0	0	0
Total	2,109	1,626	1,894	2,290	1,965	2,085
Production						
North America	4,660	5,882	5,437	5,179	5,439	5,241
South America	1,331	1,221	1,397	1,317	1,285	1,285
European Union	9,280	8,623	8,755	7,386	7,778	7,778
Other Europe	963	981	1,028	1,026	1,026	1,026
Former Soviet Union - 12	7,331	6,735	6,870	6,100	6,398	6,398
Middle East	290	285	290	290	290	290
North Africa	65	105	110	110	110	110
Sub-Saharan Africa	45	45	45	45	45	45
East Asia	602	602	602	602	602	602
Oceania	1,032	2,093	1,396	1,491	1,075	1,075
Total	25,599	26,572	25,930	23,546	24,048	23,850
Domestic Consumption						
North America	5,483	5,758	5,617	5,535	5,578	5,519
South America	1,390	1,207	1,382	1,325	1,285	1,280
European Union	8,287	8,276	8,330	7,350	7,500	7,500
Other Europe	1,015	1,042	1,064	1,082	1,082	1,082
Former Soviet Union - 12	7,963	7,155	6,745	6,195	6,393	6,393
Middle East	290	288	290	290	290	290
North Africa	73	106	110	120	120	120
Sub-Saharan Africa	59	79	87	70	70	70
East Asia	685	677	677	690	690	690
Oceania	875	1,780	1,250	1,275	1,150	1,150
Total	26,120	26,368	25,552	23,889	24,158	24,094
Ending Stocks						
North America	1,250	1,732	1,818	1,638	1,646	1,511
South America	98	104	118	110	105	110
European Union	1,010	834	914	744	748	782
Other Europe	63	52	50	49	48	48
Former Soviet Union - 12	665	242	351	246	246	246
Middle East	0	0	0	0	0	0
North Africa	1	1	1	1	1	1
Sub-Saharan Africa	15	12	12	12	12	12
East Asia	108	109	114	116	118	118
Oceania	187	290	299	315	115	115
Total	3,397	3,376	3,677	3,231	3,039	2,943

NOTES: Regional definitions appear on last page of this circular. Imports are reported on an international year basis. All other data are reported using marketing years.

World Rye Trade
October/September Year, Thousand Metric Tons

	2002/03	2003/04	2004/05	2005/06	2006/07 Sep	2006/07 Oct
TY Exports						
Belarus	150	50	50	50	50	50
Canada	44	186	123	125	125	125
EU-25	624	452	676	450	400	400
Others	687	42	122	50	0	0
Subtotal	1,505	730	971	675	575	575
United States	2	2	2	5	5	5
World Total	1,507	732	973	680	580	580
TY Imports						
EU-25	501	22	14	10	10	10
Israel	89	23	111	75	25	25
Japan	414	341	261	300	200	200
Korea, Republic of	31	114	8	0	25	25
Norway	8	16	13	20	20	20
Russian Federation	0	6	177	75	100	100
Switzerland	2	7	2	5	5	5
Turkey	43	16	61	20	20	20
Ukraine	222	32	0	0	50	50
Others	90	11	12	15	0	0
Subtotal	1,400	588	659	520	455	455
Unaccounted	-2	43	140	60	25	25
United States	109	101	174	100	100	100
World Total	1,507	732	973	680	580	580

World Rye Production, Consumption, and Stocks
Local Marketing Years, Thousand Metric Tons

	2002/03	2003/04	2004/05	2005/06	2006/07 Sep	2006/07 Oct
Production						
Argentina	80	37	89	55	55	55
Belarus	1,600	1,200	1,400	1,150	1,100	1,100
Canada	134	327	420	359	320	335
EU-25	9,190	6,907	9,966	7,676	7,162	7,142
Russian Federation	7,150	4,200	2,850	3,600	2,800	2,800
Turkey	255	240	240	240	240	240
Ukraine	1,511	625	1,600	1,050	600	600
Others	225	221	223	227	220	220
Subtotal	20,145	13,757	16,788	14,357	12,497	12,492
United States	165	219	210	191	182	183
World Total	20,310	13,976	16,998	14,548	12,679	12,675
Total Consumption						
Argentina	80	37	89	55	55	55
Belarus	1,300	1,200	1,325	1,100	1,100	1,100
Canada	106	138	211	187	215	215
EU-25	9,310	8,700	10,075	8,600	7,700	7,700
Japan	415	340	261	300	200	200
Kazakhstan, Republic of	59	45	50	50	50	50
Romania	50	50	50	50	50	50
Russian Federation	6,150	5,500	3,300	3,600	2,950	2,950
Turkey	269	283	299	260	260	260
Ukraine	1,300	900	1,300	1,050	800	850
Others	305	298	270	243	195	195
Subtotal	19,404	17,694	17,297	15,501	13,571	13,621
United States	321	297	344	304	305	307
World Total	19,725	17,991	17,641	15,805	13,876	13,928
Ending Stocks						
Belarus	199	139	164	164	114	114
Canada	25	43	130	170	130	165
EU-25	6,177	3,834	3,156	1,882	964	934
Japan	19	20	20	20	20	20
Russian Federation	1,805	355	77	126	57	76
Ukraine	325	140	336	267	111	67
Others	1	1	1	0	0	0
Subtotal	8,551	4,532	3,884	2,629	1,396	1,376
United States	11	15	20	18	14	18
World Total	8,562	4,547	3,904	2,647	1,410	1,394

Regional Rye Imports, Production, Consumption, and Stocks

Thousand Metric Tons

	2002/03	2003/04	2004/05	2005/06	Sep 2006/07	Oct 2006/07
TY Imports						
North America	111	101	174	100	100	100
South America	52	0	0	0	0	0
European Union	501	22	14	10	10	10
Other Europe	14	24	17	25	25	25
Former Soviet Union - 12	242	48	187	90	150	150
Middle East	132	39	172	95	45	45
Sub-Saharan Africa	0	0	0	0	0	0
East Asia	445	455	269	300	225	225
Oceania	12	0	0	0	0	0
Total	1,509	689	833	620	555	555
Production						
North America	299	546	630	550	502	518
South America	85	42	94	64	61	61
European Union	9,190	6,907	9,966	7,676	7,162	7,142
Other Europe	147	143	145	145	141	141
Former Soviet Union - 12	10,311	6,075	5,900	5,850	4,550	4,550
Middle East	255	240	240	240	240	240
Sub-Saharan Africa	3	3	3	3	3	3
East Asia	0	0	0	0	0	0
Oceania	20	20	20	20	20	20
Total	20,310	13,976	16,998	14,548	12,679	12,675
Domestic Consumption						
North America	427	435	555	491	520	522
South America	111	42	94	64	61	61
European Union	9,310	8,700	10,075	8,600	7,700	7,700
Other Europe	160	173	163	171	166	166
Former Soviet Union - 12	8,819	7,655	5,985	5,815	4,900	4,950
Middle East	358	306	410	335	285	285
Sub-Saharan Africa	3	3	3	3	3	3
East Asia	446	454	269	300	225	225
Oceania	31	20	20	20	20	20
Total	19,665	17,788	17,574	15,799	13,880	13,932
Ending Stocks						
North America	36	58	150	188	144	183
South America	0	0	0	0	0	0
European Union	6,177	3,834	3,156	1,882	964	934
Other Europe	1	1	1	0	0	0
Former Soviet Union - 12	2,329	634	577	557	282	257
Middle East	0	0	0	0	0	0
Sub-Saharan Africa	0	0	0	0	0	0
East Asia	19	20	20	20	20	20
Oceania	0	0	0	0	0	0
Total	8,562	4,547	3,904	2,647	1,410	1,394

NOTES: Regional definitions appear on last page of this circular. Imports are reported on an international year basis. All other data are reported using marketing years.



HISTORICAL DATA SERIES FOR SELECTED REGIONS AND COUNTRIES

CONTENTS

European Union: Grain Supply and Demand	41
China: Grain Supply and Demand	42
Other Europe: Grain Supply and Demand	43
Former Soviet Union: Grain Supply and Demand.....	44
Wheat Supply and Disappearance: Selected Exporters	51
Corn Supply and Disappearance: Selected Exporters.....	53
Barley Supply and Disappearance: Selected Exporters	55
Sorghum Supply and Disappearance: Selected Exporters	56
U.S. Grains: Supply and Distribution	57
Total Wheat and Coarse Grains: Supply and Demand	59
World Wheat and Coarse Grains: Supply and Demand	60
World Corn and Barley: Supply and Demand	62
World Rice: Supply and Demand	64

European Union: Grain Supply and Demand
Wheat and Coarse Grains Millions of Metric Tons/Hectares

	Area Harvested	Yield	Production	Imports	Exports	Feed Dom. Consumpti	Domestic Consumpti	Ending Stocks
Wheat								
1999/00	22.0	5.2	114.7	5.1	19.4	51.2	106.5	15.0
2000/01	23.5	5.3	124.2	4.7	16.8	54.2	111.1	16.0
2001/02	22.3	5.1	113.6	10.7	14.2	53.4	110.1	15.9
2002/03	23.1	5.4	124.8	13.9	19.9	58.4	118.1	16.6
2003/04	22.0	4.8	106.9	5.9	10.9	50.8	107.9	10.6
2004/05	23.2	5.9	136.8	7.4	14.4	56.7	115.2	25.2
2005/06	22.5	5.4	122.6	7.6	15.0	60.5	119.5	20.9
2006/07	22.7	5.2	117.9	6.8	16.0	57.0	116.0	13.6
Coarse Grains								
1999/00	29.1	4.6	133.5	4.8	15.2	95.0	126.7	21.1
2000/01	29.0	4.6	132.7	5.4	10.7	99.5	131.0	17.6
2001/02	29.5	4.7	140.3	5.9	8.0	101.2	134.4	21.4
2002/03	29.2	4.8	138.7	6.4	8.6	102.8	136.1	21.7
2003/04	29.0	4.2	123.0	7.8	4.4	101.9	135.5	12.6
2004/05	29.1	5.2	150.7	3.7	4.0	106.5	138.8	24.2
2005/06	28.3	4.6	131.5	3.4	3.9	100.3	132.4	22.8
2006/07	27.7	4.6	128.1	3.5	4.2	101.9	134.3	15.9
Wheat and Coarse Grains								
1999/00	51.1	4.9	248.3	9.9	34.5	146.2	233.2	36.1
2000/01	52.5	4.9	256.9	10.2	27.5	153.7	242.1	33.6
2001/02	51.8	4.9	253.8	16.6	22.2	154.6	244.5	37.3
2002/03	52.3	5.0	263.5	20.3	28.6	161.2	254.2	38.4
2003/04	51.0	4.5	229.9	13.7	15.3	152.7	243.4	23.2
2004/05	52.3	5.5	287.5	11.1	18.4	163.2	254.0	49.4
2005/06	50.8	5.0	254.1	11.0	18.9	160.8	251.9	43.7
2006/07	50.4	4.9	246.0	10.3	20.2	158.9	250.3	29.6

Notes: Trade year statistics are on a July/June year for wheat and an Oct/Sept year for coarse grains. Data for EU-15 countries prior to its expansion in 1999.

China: Grain Supply and Demand

Wheat and Coarse Grains Millions of Metric Tons/Hectares

	Area Harvested	Yield	Production	Imports	Exports	Feed Dom. Consumpti	Domestic Consumpti	Ending Stocks
Wheat								
1995/96	28.9	3.5	102.2	12.5	0.5	3.2	106.5	76.5
1996/97	29.6	3.7	110.6	2.7	1.0	3.4	107.6	81.2
1997/98	30.1	4.1	123.3	1.9	1.2	4.9	109.1	96.2
1998/99	29.8	3.7	109.7	0.8	0.5	5.0	108.3	97.9
1999/00	28.9	3.9	113.9	1.0	0.5	6.5	109.3	102.9
2000/01	26.7	3.7	99.6	0.2	0.6	10.0	110.3	91.9
2001/02	24.6	3.8	93.9	1.1	1.5	9.0	108.7	76.6
2002/03	23.9	3.8	90.3	0.4	1.7	6.5	105.2	60.4
2003/04	22.0	3.9	86.5	3.7	2.8	6.0	104.5	43.3
2004/05	21.6	4.3	92.0	6.7	1.2	4.0	102.0	38.8
2005/06	22.8	4.3	97.5	1.0	1.4	3.5	101.0	34.9
2006/07	23.4	4.4	103.5	0.7	2.0	4.0	101.0	36.1
Coarse Grains								
1995/96	27.3	4.6	124.5	3.0	0.2	78.4	115.4	101.1
1996/97	29.1	4.9	141.3	2.1	4.0	82.6	121.0	119.5
1997/98	28.1	4.1	114.7	1.6	6.2	87.2	121.6	108.0
1998/99	29.1	4.9	143.5	2.6	3.4	91.4	127.3	123.4
1999/00	29.6	4.6	137.2	2.3	10.0	92.7	128.8	124.2
2000/01	26.5	4.3	114.0	2.4	7.3	94.4	130.4	102.8
2001/02	27.5	4.4	122.2	2.0	8.6	96.2	132.9	85.6
2002/03	28.0	4.7	130.7	1.8	15.3	98.4	136.4	66.4
2003/04	27.1	4.6	124.0	1.5	7.7	99.1	138.7	45.5
2004/05	28.2	4.9	138.3	2.1	7.6	100.2	141.2	37.0
2005/06	29.1	5.1	147.7	2.2	3.8	103.1	147.4	35.7
2006/07	29.8	5.0	149.3	2.3	4.0	105.1	151.4	31.9
Wheat and Coarse Grains								
1995/96	56.2	4.0	226.7	15.5	0.7	81.6	221.9	177.6
1996/97	58.7	4.3	251.9	4.8	5.0	86.0	228.6	200.7
1997/98	58.1	4.1	238.0	3.5	7.4	92.1	230.6	204.2
1998/99	58.8	4.3	253.2	3.4	3.9	96.4	235.6	221.3
1999/00	58.4	4.3	251.1	3.4	10.5	99.2	238.1	227.1
2000/01	53.1	4.0	213.6	2.6	7.9	104.4	240.7	194.7
2001/02	52.1	4.1	216.1	3.1	10.1	105.2	241.6	162.1
2002/03	51.9	4.3	221.0	2.2	17.1	104.9	241.6	126.7
2003/04	49.1	4.3	210.4	5.3	10.5	105.1	243.2	88.8
2004/05	49.8	4.6	230.2	8.8	8.8	104.2	243.2	75.8
2005/06	51.9	4.7	245.1	3.2	5.2	106.6	248.4	70.6
2006/07	53.2	4.8	252.8	3.0	6.0	109.1	252.4	68.0

Notes: Trade year statistics are on July/June Year for wheat and an Oct/Sep year for coarse grains.

Other Europe: Grain Supply and Demand
Wheat and Coarse Grains Millions of Metric Tons/Hectares

	Area Harvested	Yield	Production	Imports	Exports	Feed Dom. Consumpti	Domestic Consumpti	Ending Stocks
Wheat								
1995/96	5.1	3.3	16.6	1.2	2.8	3.3	14.2	3.7
1996/97	3.9	2.3	8.9	2.2	0.6	3.0	12.6	1.7
1997/98	5.0	3.2	16.0	1.5	1.1	3.2	14.4	3.6
1998/99	4.6	3.1	14.5	1.2	1.1	3.1	14.3	3.9
1999/00	3.9	3.1	11.9	1.8	1.6	3.2	13.3	2.6
2000/01	4.4	2.8	12.1	1.9	0.9	2.8	12.8	2.9
2001/02	5.1	2.9	14.7	2.0	2.0	3.3	13.6	4.0
2002/03	4.7	2.7	12.6	2.0	1.9	3.2	13.4	3.3
2003/04	3.5	2.2	7.6	4.2	0.1	2.5	12.9	2.1
2004/05	4.1	3.8	15.5	1.8	1.4	3.5	14.1	3.9
2005/06	4.3	3.1	13.2	1.6	2.0	3.1	13.5	3.3
2006/07	4.0	2.9	11.6	1.5	1.4	2.7	12.9	2.0
Coarse Grains								
1995/96	7.6	3.4	25.8	0.7	0.9	21.2	25.2	1.8
1996/97	7.7	3.0	23.4	0.9	1.0	19.5	23.5	1.5
1997/98	7.5	3.9	29.4	0.7	1.2	22.9	27.0	3.5
1998/99	7.3	3.1	22.8	0.6	1.0	19.8	23.8	2.1
1999/00	7.3	3.6	26.5	0.8	0.9	21.8	25.8	2.7
2000/01	6.6	2.3	15.2	1.4	0.3	13.5	17.5	1.4
2001/02	6.8	3.1	21.1	1.1	1.0	16.6	20.5	2.2
2002/03	6.6	3.4	22.1	1.3	1.7	17.2	21.0	3.0
2003/04	6.6	2.8	18.7	1.5	0.3	17.9	21.3	1.7
2004/05	7.0	4.2	29.1	0.7	2.3	19.8	25.0	4.1
2005/06	6.9	3.9	26.8	0.7	2.2	19.3	24.9	4.5
2006/07	6.7	3.6	24.4	0.6	2.3	19.0	24.5	2.8
Wheat and Coarse Grains								
1995/96	12.7	3.3	42.4	1.8	3.8	24.4	39.4	5.6
1996/97	11.6	2.8	32.3	3.0	1.6	22.5	36.1	3.2
1997/98	12.4	3.6	45.4	2.2	2.3	26.1	41.4	7.1
1998/99	12.0	3.1	37.3	1.8	2.1	23.0	38.2	6.0
1999/00	11.1	3.5	38.4	2.5	2.5	25.0	39.1	5.3
2000/01	11.0	2.5	27.3	3.3	1.3	16.3	30.3	4.3
2001/02	11.8	3.0	35.8	3.1	3.0	19.9	34.0	6.1
2002/03	11.3	3.1	34.8	3.3	3.5	20.5	34.3	6.3
2003/04	10.1	2.6	26.3	5.8	0.4	20.4	34.1	3.8
2004/05	11.1	4.0	44.6	2.5	3.7	23.3	39.1	8.1
2005/06	11.2	3.6	40.0	2.3	4.1	22.4	38.4	7.8
2006/07	10.8	3.3	36.0	2.1	3.7	21.7	37.4	4.8

Notes: Trade year statistics are on July/June Year for wheat and an Oct/Sep year for coarse grains.

Former Soviet Union: Grain Supply and Demand (Barley)

Millions of Tons/Hectares

Country Mktg Year	Area Harvested	Yield	Production	MY Imports	MY Exports	Feed Consumpti	Total Consumpti	Ending Stocks
Former Soviet Union - 12								
Kazakhstan, Republic of								
2002/03	1.8	1.3	2.2	0.0	0.5	1.8	1.9	0.9
2003/04	1.8	1.2	2.1	0.0	0.7	1.9	2.0	0.4
2004/05	1.7	0.9	1.5	0.0	0.1	1.5	1.6	0.2
2005/06	1.6	0.9	1.5	0.0	0.1	1.3	1.4	0.2
2006/07	1.6	0.9	1.5	0.0	0.3	1.3	1.4	0.0
Russian Federation								
2002/03	10.3	1.8	18.7	0.3	3.1	10.7	15.5	4.7
2003/04	10.5	1.7	18.0	0.4	2.3	13.7	18.6	2.2
2004/05	10.0	1.7	17.2	0.3	1.1	11.7	16.5	2.1
2005/06	9.2	1.7	15.8	0.3	1.7	10.9	15.5	1.0
2006/07	10.1	1.8	18.0	0.3	2.2	11.5	16.1	0.9
Ukraine								
2002/03	4.2	2.5	10.4	0.0	2.9	5.5	7.4	1.4
2003/04	4.6	1.5	6.9	0.0	1.5	4.7	6.2	0.6
2004/05	4.5	2.5	11.1	0.0	4.3	4.7	6.4	1.0
2005/06	4.4	2.1	9.0	0.1	4.0	3.2	4.9	1.2
2006/07	5.2	2.2	11.5	0.0	5.2	5.0	6.7	0.8
Uzbekistan, Republic of								
2002/03	0.1	2.7	0.2	0.0	0.0	0.2	0.2	0.0
2003/04	0.1	1.4	0.2	0.0	0.0	0.1	0.2	0.0
2004/05	0.1	2.7	0.2	0.0	0.0	0.2	0.2	0.0
2005/06	0.1	2.7	0.2	0.0	0.0	0.2	0.2	0.0
2006/07	0.1	2.7	0.2	0.0	0.0	0.2	0.2	0.0
Other Former Soviet Union - 12								
2002/03	1.1	2.4	2.6	0.0	0.0	1.9	2.6	0.3
2003/04	1.2	2.0	2.5	0.2	0.0	1.8	2.6	0.5
2004/05	1.2	2.6	3.2	0.1	0.0	2.2	2.9	0.8
2005/06	1.2	2.5	2.9	0.1	0.0	2.3	3.1	0.7
2006/07	1.1	2.2	2.5	0.1	0.0	2.0	2.7	0.6
Total Former Soviet Union - 12								
2002/03	17.3	2.0	34.1	0.3	6.5	20.0	27.6	7.4
2003/04	18.3	1.6	29.6	0.7	4.5	22.2	29.5	3.7
2004/05	17.5	1.9	33.2	0.3	5.5	20.2	27.6	4.2
2005/06	16.3	1.8	29.4	0.5	5.8	17.8	25.1	3.2
2006/07	18.1	1.9	33.7	0.3	7.7	19.9	27.1	2.4

Country	Mktg Year	Area Harvested	Yield	Production	MY Imports	MY Exports	Feed Consumpti	Total Consumpti	Ending Stocks
---------	-----------	----------------	-------	------------	------------	------------	----------------	-----------------	---------------

Former Soviet Union: Grain Supply and Demand (Corn)
Millions of Tons/Hectares

Country Mktg Year	Area Harvested	Yield	Production	MY Imports	MY Exports	Feed Consumpti	Total Consumpti	Ending Stocks
Former Soviet Union - 12								
Kazakhstan, Republic of								
2002/03	0.1	3.2	0.4	0.0	0.0	0.3	0.4	0.0
2003/04	0.1	3.0	0.3	0.0	0.0	0.2	0.3	0.0
2004/05	0.1	3.0	0.3	0.0	0.0	0.2	0.3	0.0
2005/06	0.1	3.0	0.3	0.0	0.0	0.2	0.3	0.0
2006/07	0.1	3.2	0.3	0.0	0.0	0.2	0.3	0.0
Russian Federation								
2002/03	0.6	2.8	1.6	0.1	0.0	1.2	1.6	0.1
2003/04	0.7	3.0	2.1	0.5	0.0	2.2	2.6	0.2
2004/05	0.9	3.9	3.5	0.2	0.0	3.0	3.6	0.2
2005/06	0.9	3.8	3.2	0.3	0.1	3.0	3.5	0.1
2006/07	1.0	3.2	3.2	0.3	0.0	2.9	3.4	0.2
Ukraine								
2002/03	1.2	3.5	4.2	0.0	0.8	2.8	3.5	0.8
2003/04	2.0	3.4	6.9	0.0	1.2	4.9	5.6	0.8
2004/05	2.3	3.8	8.8	0.0	2.3	5.3	6.0	1.3
2005/06	1.7	4.3	7.2	0.0	2.5	4.4	5.1	0.9
2006/07	1.5	4.0	6.0	0.0	1.8	4.0	4.5	0.6
Uzbekistan, Republic of								
2002/03	0.0	4.3	0.2	0.0	0.0	0.1	0.1	0.0
2003/04	0.0	4.1	0.1	0.0	0.0	0.1	0.2	0.0
2004/05	0.0	4.4	0.2	0.0	0.0	0.1	0.2	0.0
2005/06	0.0	4.6	0.2	0.0	0.0	0.2	0.2	0.0
2006/07	0.0	4.6	0.2	0.0	0.0	0.2	0.2	0.0
Other Former Soviet Union - 12								
2002/03	0.8	2.8	2.2	0.1	0.0	2.0	2.3	0.5
2003/04	0.7	2.9	2.1	0.1	0.1	2.1	2.4	0.3
2004/05	0.9	3.1	2.6	0.3	0.0	2.4	2.7	0.6
2005/06	0.8	3.1	2.3	0.3	0.0	2.4	2.6	0.5
2006/07	0.7	3.1	2.3	0.2	0.0	2.2	2.5	0.5
Total Former Soviet Union - 12								
2002/03	2.7	3.2	8.5	0.2	0.9	6.4	7.9	1.5
2003/04	3.6	3.2	11.5	0.6	1.3	9.5	11.0	1.4
2004/05	4.2	3.7	15.4	0.5	2.4	11.0	12.7	2.2
2005/06	3.4	3.9	13.1	0.6	2.5	10.1	11.7	1.6
2006/07	3.4	3.6	11.9	0.5	1.8	9.5	10.9	1.3

Country	Mktg Year	Area Harvested	Yield	Production	MY Imports	MY Exports	Feed Consumpti	Total Consumpti	Ending Stocks
---------	-----------	----------------	-------	------------	------------	------------	----------------	-----------------	---------------

Former Soviet Union: Grain Supply and Demand (Wheat)
Millions of Tons/Hectares

Country Mktg Year	Area Harvested	Yield	Production	MY Imports	MY Exports	Feed Consumpti	Total Consumpti	Ending Stocks
Former Soviet Union - 12								
Kazakhstan, Republic of								
2002/03	11.5	1.1	12.6	0.0	6.2	2.7	6.8	3.7
2003/04	11.3	1.0	11.0	0.0	4.1	2.7	6.8	3.8
2004/05	11.8	0.8	10.0	0.0	2.7	2.7	7.4	3.6
2005/06	11.8	0.9	11.0	0.1	3.0	2.7	7.4	4.3
2006/07	12.2	0.9	11.5	0.0	5.0	2.7	7.6	3.2
Russian Federation								
2002/03	25.7	2.0	50.6	1.0	12.6	16.0	39.3	6.1
2003/04	22.2	1.5	34.1	1.0	3.1	12.5	35.5	2.6
2004/05	24.2	1.9	45.4	1.2	8.0	13.6	37.4	3.9
2005/06	25.4	1.9	47.7	1.1	10.5	14.9	38.4	3.8
2006/07	23.7	1.8	41.5	1.2	7.5	13.2	36.4	2.6
Ukraine								
2002/03	6.8	3.0	20.6	0.8	6.6	4.0	14.5	3.3
2003/04	2.5	1.5	3.6	3.4	0.1	0.4	9.0	1.1
2004/05	5.9	3.0	17.5	0.0	4.4	2.1	11.7	2.6
2005/06	6.6	2.8	18.7	0.1	6.5	2.9	12.5	2.4
2006/07	5.4	2.5	13.5	0.1	4.0	1.6	10.6	1.4
Uzbekistan, Republic of								
2002/03	1.2	4.2	5.0	0.3	0.0	0.8	4.9	0.9
2003/04	1.5	3.7	5.4	0.2	0.5	0.8	5.2	0.9
2004/05	1.4	3.9	5.5	0.2	0.1	0.8	5.4	1.1
2005/06	1.5	4.2	6.1	0.2	0.1	0.8	5.6	1.7
2006/07	1.3	4.5	5.8	0.2	0.1	0.8	6.0	1.6
Other Former Soviet Union - 12								
2002/03	3.2	2.6	8.2	2.5	0.3	1.3	9.8	2.5
2003/04	2.9	2.3	6.8	2.6	0.1	1.2	9.4	2.5
2004/05	3.2	2.6	8.5	3.1	0.1	1.6	11.0	3.0
2005/06	3.3	2.6	8.7	3.1	0.1	1.6	11.4	3.4
2006/07	3.0	2.5	7.6	2.5	0.1	1.3	10.8	2.7
Total Former Soviet Union - 12								
2002/03	48.4	2.0	96.9	4.6	25.7	24.8	75.4	16.5
2003/04	40.3	1.5	60.9	7.3	7.8	17.6	65.9	11.0
2004/05	46.5	1.9	86.8	4.6	15.2	20.8	72.9	14.3
2005/06	48.5	1.9	92.2	4.5	20.1	22.9	75.3	15.5
2006/07	45.6	1.8	79.9	4.0	16.7	19.6	71.4	11.4

Country	Mktg Year	Area Harvested	Yield	Production	MY Imports	MY Exports	Feed Consumpti	Total Consumpti	Ending Stocks
---------	-----------	----------------	-------	------------	------------	------------	----------------	-----------------	---------------

Former Soviet Union: Grain Supply and Demand
Wheat and Coarse Grains Millions of Metric Tons/Hectares

	Area Harvested	Yield	Production	Imports	Exports	Feed Dom. Consumpti	Domestic Consumpti	Ending Stocks
Wheat								
2000/01	43.1	1.5	63.1	5.2	5.0	16.2	64.0	5.1
2001/02	45.7	2.0	91.3	3.8	13.9	21.1	70.2	16.0
2002/03	48.4	2.0	96.9	4.6	25.7	24.8	75.4	16.5
2003/04	40.3	1.5	60.9	7.3	7.8	17.6	65.9	11.0
2004/05	46.5	1.9	86.8	4.6	15.2	20.8	72.9	14.3
2005/06	48.5	1.9	92.2	4.5	20.1	22.9	75.3	15.5
2006/07	45.6	1.8	79.9	4.0	16.7	19.6	71.4	11.4
Coarse Grains								
2000/01	31.0	1.6	49.1	1.1	2.5	28.8	45.3	6.0
2001/02	32.6	1.9	61.8	1.0	6.6	33.3	50.8	11.5
2002/03	31.4	1.9	60.7	0.7	8.1	35.0	52.8	12.0
2003/04	31.2	1.8	55.4	1.5	6.1	39.4	56.7	6.0
2004/05	31.1	2.0	62.9	1.1	8.1	38.1	54.6	7.3
2005/06	28.3	1.9	55.1	1.1	8.4	33.5	49.4	5.6
2006/07	29.9	1.9	57.4	0.9	9.6	34.9	50.2	4.2

Notes: Trade year statistics are on a July/June year for wheat and an Oct/Sept year for coarse grains.

Wheat Supply and Disappearance: Selected Exporters
Million Metric Tons/Hectares

Country Mktg Year	Area Harvested	Yield	Production	MY Imports	MY Exports	Feed Consumpti	Total Consumpti	Ending Stocks
Wheat Competitors								
Argentina								
1998/99	5.4	2.5	13.3	0.0	8.6	0.0	4.9	0.7
1999/00	6.2	2.7	16.4	0.0	11.6	0.1	4.9	0.6
2000/01	6.4	2.5	16.2	0.0	11.3	0.1	5.0	0.6
2001/02	6.8	2.3	15.5	0.0	10.1	0.1	4.9	1.1
2002/03	5.9	2.1	12.3	0.0	6.8	0.1	5.2	1.5
2003/04	5.7	2.5	14.5	0.0	9.4	0.1	5.2	1.4
2004/05	6.1	2.6	16.0	0.0	11.8	0.1	5.0	0.6
2005/06	5.0	2.6	13.0	0.0	8.2	0.1	5.0	0.4
2006/07	5.2	2.5	13.3	0.0	8.5	0.1	4.9	0.2
Australia								
1998/99	11.5	1.9	21.5	0.1	16.5	1.8	4.5	2.8
1999/00	12.2	2.0	24.8	0.1	17.8	2.5	5.2	4.6
2000/01	12.1	1.8	22.1	0.1	15.9	2.6	5.3	5.5
2001/02	11.6	2.1	24.3	0.1	16.4	2.7	5.4	8.0
2002/03	11.1	0.9	10.1	0.3	9.1	3.5	6.2	3.1
2003/04	13.1	2.0	26.1	0.1	18.0	3.2	6.0	5.4
2004/05	13.8	1.6	22.6	0.1	14.7	3.5	6.2	7.1
2005/06	12.6	1.9	24.5	0.1	16.0	3.7	6.4	9.3
2006/07	11.5	1.0	11.0	0.1	11.5	3.7	6.4	2.4
Canada								
1998/99	10.7	2.3	24.1	0.2	14.7	4.3	8.1	7.4
1999/00	10.4	2.6	26.9	0.2	19.2	4.1	8.1	7.3
2000/01	11.0	2.4	26.5	0.2	17.3	3.0	7.0	9.7
2001/02	10.6	1.9	20.6	0.3	16.3	3.7	7.6	6.7
2002/03	8.8	1.8	16.2	0.4	9.4	4.1	8.2	5.7
2003/04	10.5	2.3	23.6	0.2	15.8	3.4	7.6	6.1
2004/05	9.9	2.6	25.9	0.2	15.0	5.0	9.2	8.0
2005/06	9.8	2.7	26.8	0.3	16.1	5.1	9.2	9.7
2006/07	10.6	2.5	26.3	0.3	20.5	4.7	9.1	6.7
Total Wheat Competitors								
1998/99	27.6	6.6	58.8	0.2	39.7	6.1	17.5	11.0
1999/00	28.7	7.3	68.1	0.3	48.6	6.6	18.2	12.5
2000/01	29.5	6.8	64.9	0.3	44.5	5.7	17.4	15.8
2001/02	29.0	6.3	60.4	0.4	42.8	6.5	17.9	15.9
2002/03	25.8	4.8	38.6	0.7	25.3	7.6	19.5	10.4

Country Mktg Year	Area Harvested	Yield	Production	MY Imports	MY Exports	Feed Consumpti	Total Consumpti	Ending Stocks
2003/04	29.2	6.8	64.2	0.3	43.2	6.7	18.8	12.8
2004/05	29.7	6.9	64.5	0.3	41.5	8.6	20.4	15.6
2005/06	27.4	7.3	64.3	0.4	40.3	8.8	20.6	19.4
2006/07	27.3	6.0	50.6	0.3	40.5	8.5	20.4	9.4
India								
1998/99	26.7	2.5	66.4	2.2	0.0	0.4	63.7	9.9
1999/00	27.4	2.6	70.8	1.4	0.2	0.4	68.8	13.1
2000/01	27.5	2.8	76.4	0.4	1.6	0.5	66.8	21.5
2001/02	25.7	2.7	69.7	0.0	3.1	0.5	65.1	23.0
2002/03	25.9	2.8	71.8	0.0	4.9	0.6	74.3	15.7
2003/04	24.9	2.6	65.1	0.0	5.7	0.6	68.3	6.9
2004/05	26.6	2.7	72.2	0.0	2.1	0.5	72.8	4.1
2005/06	26.5	2.6	68.6	0.0	0.8	0.3	70.0	2.0
2006/07	25.0	2.7	68.0	6.0	0.5	0.3	72.5	3.0
Turkey								
1998/99	8.6	2.1	18.0	1.9	2.6	1.0	16.9	2.6
1999/00	8.7	1.9	16.5	1.5	2.2	1.0	16.8	1.6
2000/01	8.7	2.1	18.0	0.5	1.6	1.0	16.7	1.7
2001/02	8.5	1.8	15.5	1.0	0.8	1.1	16.5	1.0
2002/03	8.6	2.0	16.8	1.2	0.8	1.0	16.8	1.5
2003/04	8.6	2.0	16.8	1.1	0.8	1.0	16.8	1.7
2004/05	8.6	2.2	18.5	0.4	2.0	1.0	16.8	1.8
2005/06	8.6	2.1	18.0	0.1	3.2	0.4	16.1	0.6
2006/07	8.6	2.1	18.0	0.7	2.0	0.8	16.8	0.5

Notes: Wheat trade statistics are on July/June year.

Corn Supply and Disappearance: Selected Exporters
Million Metric Tons/Hectares

Country Mktg Year	Area Harvested	Yield	Production	MY Imports	MY Exports	Feed Consumpti	Total Consumpti	Ending Stocks
Argentina								
1998/99	2.6	5.2	13.5	0.0	7.9	4.9	6.5	0.7
1999/00	3.1	5.5	17.2	0.0	11.9	4.0	5.5	0.5
2000/01	2.8	5.5	15.4	0.0	9.7	3.9	5.6	0.6
2001/02	2.5	6.0	14.7	0.0	10.9	2.7	4.2	0.3
2002/03	2.5	6.3	15.5	0.0	11.2	2.5	4.1	0.5
2003/04	2.3	6.5	15.0	0.0	10.9	2.8	4.4	0.2
2004/05	2.8	7.4	20.5	0.0	14.6	3.5	5.2	1.0
2005/06	2.4	6.0	14.5	0.0	8.5	4.2	5.9	1.1
2006/07	2.5	7.0	17.5	0.0	11.5	4.3	6.1	1.0
China, Peoples Republic of								
1998/99	25.2	5.3	133.0	0.3	3.3	86.5	113.9	122.9
1999/00	25.9	4.9	128.1	0.1	9.9	89.5	117.3	123.8
2000/01	23.1	4.6	106.0	0.1	7.3	92.0	120.2	102.4
2001/02	24.3	4.7	114.1	0.0	8.6	94.0	123.1	84.8
2002/03	24.6	4.9	121.3	0.0	15.2	96.0	125.9	65.0
2003/04	24.1	4.8	115.8	0.0	7.6	97.0	128.4	44.9
2004/05	25.4	5.1	130.3	0.0	7.6	98.0	131.0	36.6
2005/06	26.4	5.3	139.4	0.1	3.8	101.0	137.0	35.2
2006/07	27.0	5.2	141.0	0.1	4.0	103.0	141.0	31.3
South Africa, Republic of								
1998/99	3.6	2.2	7.9	0.6	0.5	3.7	7.9	0.9
1999/00	3.8	3.0	11.5	0.0	1.4	4.1	8.9	2.0
2000/01	3.2	2.5	8.0	0.4	1.3	4.1	8.7	0.5
2001/02	3.5	2.8	10.1	0.9	1.1	3.9	8.4	1.9
2002/03	3.7	2.7	9.7	0.4	1.1	4.0	8.5	2.4
2003/04	3.3	2.9	9.7	0.2	0.7	4.1	8.7	3.0
2004/05	3.2	3.6	11.7	0.4	2.1	5.0	9.7	3.2
2005/06	2.1	3.3	7.0	0.9	0.8	4.4	9.1	1.2
2006/07	3.0	3.2	9.5	0.4	0.9	4.6	9.3	0.9
Brazil								
1998/99	12.1	2.7	32.4	1.2	0.0	28.2	33.2	2.1
1999/00	12.6	2.5	31.6	1.6	0.2	28.5	33.5	1.7
2000/01	13.0	3.2	41.5	0.2	6.3	29.5	34.5	2.7
2001/02	11.8	3.0	35.5	0.4	2.1	29.5	35.0	1.5
2002/03	13.0	3.4	44.5	0.7	4.6	30.0	35.8	6.3
2003/04	12.4	3.4	42.0	0.4	4.4	30.5	36.3	7.9

Country Mktg Year	Area Harvested	Yield	Production	MY Imports	MY Exports	Feed Consumpti	Total Consumpti	Ending Stocks
2004/05	11.6	3.0	35.0	0.5	0.7	32.1	38.5	4.2
2005/06	12.8	3.2	41.0	0.5	3.0	32.5	39.0	3.7
2006/07	12.5	3.2	40.5	0.8	1.5	33.5	40.0	3.4
Total Corn Competitors								
1998/99	43.5	4.3	186.8	2.0	11.8	123.2	161.5	126.6
1999/00	45.4	4.1	188.4	1.7	23.5	126.1	165.2	128.0
2000/01	42.1	4.1	171.0	0.8	24.5	129.5	169.0	106.2
2001/02	42.1	4.1	174.3	1.3	22.6	130.1	170.7	88.6
2002/03	43.7	4.4	191.0	1.2	32.2	132.5	174.3	74.2
2003/04	42.1	4.3	182.5	0.6	23.7	134.4	177.8	55.9
2004/05	43.0	4.6	197.5	0.9	25.0	138.6	184.4	44.9
2005/06	43.7	4.6	201.9	1.4	16.1	142.1	191.0	41.1
2006/07	45.0	4.6	208.5	1.3	17.9	145.4	196.4	36.6

Notes: Corn Trade Statistics are on an Oct/Sept year.

Barley Supply and Disappearance: Selected Exporters
Million Metric Tons/Hectares

Country Mktg Year	Area Harvested	Yield	Production	MY Imports	MY Exports	Feed Consumpti	Total Consumpti	Ending Stocks
Australia								
1998/99	3.2	1.9	6.0	0.0	4.2	1.3	2.1	0.5
1999/00	2.6	1.9	5.0	0.0	2.6	1.7	2.6	0.4
2000/01	3.5	2.0	6.7	0.0	4.0	1.3	2.2	1.0
2001/02	3.7	2.2	8.3	0.0	4.7	1.8	2.8	1.8
2002/03	3.9	1.0	3.9	0.0	2.0	1.8	2.7	0.9
2003/04	4.5	2.3	10.4	0.0	6.4	2.2	3.1	1.9
2004/05	4.6	1.7	7.7	0.0	4.3	2.3	3.2	2.1
2005/06	4.7	2.1	9.9	0.0	5.5	2.5	3.4	3.1
2006/07	4.4	1.0	4.5	0.0	3.0	2.6	3.5	1.1
Canada								
1998/99	4.3	3.0	12.7	0.0	1.1	10.1	11.3	2.7
1999/00	4.1	3.2	13.2	0.0	1.7	9.9	11.4	2.8
2000/01	4.6	2.9	13.2	0.0	2.0	10.1	11.6	2.5
2001/02	4.2	2.6	10.8	0.1	1.1	8.9	10.3	2.0
2002/03	3.3	2.2	7.5	0.2	0.4	6.5	7.9	1.5
2003/04	4.4	2.8	12.3	0.0	1.8	8.5	9.9	2.1
2004/05	4.1	3.3	13.2	0.1	1.2	9.3	10.8	3.4
2005/06	3.9	3.2	12.5	0.1	2.3	8.9	10.4	3.3
2006/07	3.4	2.9	10.0	0.1	1.5	8.7	10.2	1.6
EU-25								
1999/00	13.9	4.1	57.5	1.1	10.4	37.3	51.6	11.6
2000/01	13.6	4.3	58.8	1.1	7.7	40.4	54.9	9.0
2001/02	13.5	4.2	57.0	1.6	3.8	39.0	53.9	9.9
2002/03	13.3	4.2	56.5	1.5	5.0	38.7	54.4	8.5
2003/04	13.4	4.1	54.8	0.6	2.8	41.0	56.9	4.3
2004/05	13.1	4.7	61.8	0.5	2.9	37.5	52.9	10.7
2005/06	13.0	4.1	52.9	0.3	3.2	37.2	52.5	8.2
2006/07	12.8	4.3	55.0	0.4	3.0	39.5	54.8	5.8

Notes: Barley trade statistics are on October/September year.

Sorghum Supply and Disappearance: Selected Exporters
Million Metric Tons/Hectares

Country Mktg Year	Area Harvested	Yield	Production	MY Imports	MY Exports	Feed Consumpti	Total Consumpti	Ending Stocks
Argentina								
1998/99	0.7	4.4	3.2	0.0	0.6	2.5	2.6	0.7
1999/00	0.7	4.6	3.4	0.0	0.9	2.4	2.5	0.7
2000/01	0.6	4.8	2.7	0.0	0.4	2.4	2.5	0.4
2001/02	0.5	5.1	2.8	0.0	0.4	2.2	2.3	0.5
2002/03	0.6	5.1	2.8	0.0	0.6	2.1	2.3	0.4
2003/04	0.5	4.6	2.2	0.0	0.2	1.9	2.0	0.4
2004/05	0.6	5.0	2.9	0.0	0.4	2.4	2.6	0.4
2005/06	0.5	4.4	2.2	0.0	0.2	2.0	2.2	0.2
2006/07	0.6	5.1	2.8	0.0	0.3	2.3	2.5	0.3
Australia								
1998/99	0.6	3.2	1.9	0.0	0.5	1.4	1.4	0.1
1999/00	0.6	3.4	2.1	0.0	0.9	1.3	1.3	0.1
2000/01	0.8	2.6	1.9	0.0	0.6	1.3	1.3	0.1
2001/02	0.8	2.5	2.0	0.0	0.4	1.7	1.7	0.1
2002/03	0.7	2.2	1.5	0.0	0.1	1.4	1.4	0.1
2003/04	0.7	2.7	2.0	0.0	0.6	1.4	1.4	0.1
2004/05	0.8	2.7	2.2	0.0	0.2	1.9	1.9	0.1
2005/06	0.9	2.3	2.0	0.0	0.3	1.7	1.7	0.1
2006/07	0.8	2.6	2.1	0.0	0.3	1.9	1.9	0.1

Notes: Sorghum trade statistics are on October/September year.

U.S. Grains Supply and Distribution: Wheat, Corn, Sorghum, Barley, Oats, Rye, and Rice

Thousand Metric Tons/Hectares

	Area Harvested	Yield	Rough Production	Production	Imports	TY Imports	Exports	TY Exports	Feed Dom. Consumption	Domestic Consumption	Ending Stocks
Wheat											
2001/02	19,616	3	nr	53,001	2,927	2,953	26,190	26,270	4,953	32,434	21,150
2002/03	18,544	2	nr	43,705	2,106	1,958	23,139	22,834	3,150	30,448	13,374
2003/04	21,474	3	nr	63,814	1,715	1,760	31,524	32,295	5,521	32,507	14,872
2004/05	20,234	3	nr	58,738	1,921	1,946	29,009	28,464	4,955	31,823	14,699
2005/06	20,283	3	nr	57,280	2,224	2,309	27,467	27,424	4,174	31,191	15,545
2006/07	18,943	3	nr	49,316	2,858	2,800	25,174	26,000	3,946	31,163	11,382
Corn											
2001/02	27,830	9	nr	241,377	258	202	48,383	47,271	148,958	200,941	40,551
2002/03	28,057	8	nr	227,767	367	374	40,334	40,924	141,303	200,748	27,603
2003/04	28,710	9	nr	256,278	358	341	48,258	48,808	147,197	211,644	24,337
2004/05	29,798	10	nr	299,914	275	281	46,181	45,347	156,428	224,648	53,697
2005/06	30,395	9	nr	282,260	279	250	54,613	56,500	155,992	231,568	50,055
2006/07	28,752	10	nr	277,005	254	250	57,153	57,000	154,947	244,867	25,294
Sorghum											
2001/02	3,472	4	nr	13,057	0	0	6,142	6,135	5,842	6,427	1,549
2002/03	2,883	3	nr	9,163	1	1	4,681	4,911	4,328	4,939	1,093
2003/04	3,156	3	nr	10,446	0	0	5,049	4,845	4,624	5,638	852
2004/05	2,637	4	nr	11,523	1	1	4,675	4,541	4,860	6,255	1,446
2005/06	2,321	4	nr	10,005	0	0	4,953	5,000	3,573	4,843	1,655
2006/07	2,153	4	nr	7,651	0	0	4,191	4,300	2,540	3,937	1,178
Barley											
2001/02	1,729	3	nr	5,407	521	538	575	517	2,272	5,661	2,006
2002/03	1,669	3	nr	4,940	402	282	659	552	1,819	5,179	1,510
2003/04	1,913	3	nr	6,059	449	497	409	384	1,617	4,990	2,619
2004/05	1,627	4	nr	6,091	264	157	506	771	2,248	5,672	2,796
2005/06	1,323	3	nr	4,613	117	150	605	350	1,131	4,571	2,350
2006/07	1,194	3	nr	3,920	327	300	435	400	871	4,246	1,916
Oats											
2001/02	773	2	nr	1,707	1,654	1,497	41	37	2,413	3,459	917
2002/03	833	2	nr	1,684	1,640	1,777	38	39	2,435	3,480	723
2003/04	898	2	nr	2,096	1,547	1,302	36	38	2,330	3,389	941
2004/05	723	2	nr	1,679	1,557	1,629	39	31	2,223	3,297	841
2005/06	738	2	nr	1,667	1,572	1,800	30	40	2,213	3,287	763
2006/07	638	2	nr	1,361	1,810	1,800	29	30	2,100	3,189	716
Rye											

	Area Harvested	Yield	Rough Production	Production	Imports	TY Imports	Exports	TY Exports	Feed Dom. Consumption	Domestic Consumption	Ending Stocks
2001/02	101	2	nr	175	126	164	5	4	75	312	14
2002/03	106	2	nr	165	156	109	3	2	85	321	11
2003/04	129	2	nr	219	83	101	1	2	62	297	15
2004/05	121	2	nr	210	143	174	4	2	107	344	20
2005/06	113	2	nr	191	114	100	3	5	69	304	18
2006/07	111	2	nr	183	127	100	3	5	71	307	18
Rice, Milled											
2001/02	1,341	7	9,764	6,714	419	420	2,954	3,295	nr	3,850	1,216
2002/03	1,298	7	9,570	6,536	471	458	3,860	3,834	nr	3,534	829
2003/04	1,213	7	9,068	6,420	478	477	3,310	3,090	nr	3,656	761
2004/05	1,346	8	10,540	7,462	419	419	3,496	3,862	nr	3,935	1,211
2005/06	1,361	7	10,125	7,108	544	565	3,688	3,700	nr	3,806	1,369
2006/07	1,142	8	8,721	6,105	572	590	3,080	3,000	nr	3,904	1,062

Notes: Wheat trade year statistics are on July/June years. Barley, corn, sorghum, rye and oats trade year statistics are on Oct/Sept years. Rice trade year statistics are for subsequent calendar year.

Total Wheat and Coarse Grains: Supply and Demand

Millions of Metric Tons/Hectares

	Area Harvested	Yield	Production TY	Exports	Feed Dom. Consumpti	Domestic Consumpti	Ending Stocks
Wheat and Coarse Grains							
1977/78	570.7	1.9	1,068.9	158.3	511.7	1,076.8	233.2
1978/79	569.7	2.1	1,183.1	161.8	556.8	1,138.1	278.2
1979/80	569.0	2.0	1,153.1	182.6	573.9	1,157.6	273.7
1980/81	577.6	2.0	1,159.3	200.6	562.6	1,179.2	255.2
1981/82	587.8	2.0	1,204.0	196.9	573.5	1,178.3	281.0
1982/83	576.9	2.2	1,248.0	189.6	593.4	1,197.1	332.1
1983/84	563.8	2.1	1,162.5	193.2	588.4	1,216.2	278.5
1984/85	567.0	2.3	1,315.0	203.6	609.9	1,253.6	339.9
1985/86	570.9	2.3	1,328.5	165.2	613.1	1,247.9	420.5
1986/87	565.6	2.4	1,348.0	174.7	644.2	1,299.5	468.9
1987/88	544.7	2.4	1,285.0	202.2	655.2	1,329.8	422.0
1988/89	542.2	2.2	1,218.0	203.3	618.2	1,302.6	337.4
1989/90	548.4	2.4	1,327.7	208.9	643.1	1,346.4	318.7
1990/91	548.8	2.6	1,416.7	190.1	666.9	1,369.6	365.8
1991/92	545.4	2.5	1,355.4	207.5	649.8	1,364.7	356.4
1992/93	549.3	2.6	1,431.0	205.2	662.2	1,389.5	395.0
1993/94	540.5	2.5	1,356.2	188.2	654.0	1,388.8	362.4
1994/95	537.8	2.6	1,392.4	200.1	666.5	1,396.2	358.6
1995/96	533.5	2.5	1,338.8	187.5	636.0	1,380.3	317.1
1996/97	553.6	2.7	1,491.6	198.4	669.1	1,442.6	366.1
1997/98	539.6	2.8	1,491.2	190.3	680.0	1,444.5	412.9
1998/99	533.6	2.8	1,480.9	198.7	678.5	1,448.2	445.5
1999/00	515.1	2.8	1,463.4	217.5	685.2	1,467.3	441.1
2000/01	514.3	2.8	1,443.8	208.5	692.8	1,468.3	416.5
2001/02	516.1	2.9	1,475.0	213.6	707.1	1,492.0	399.5
2002/03	507.9	2.8	1,443.4	214.8	708.5	1,506.4	336.5
2003/04	517.0	2.8	1,470.7	207.3	712.0	1,534.8	272.4
2004/05	519.1	3.2	1,642.9	215.2	747.6	1,585.5	329.8
2005/06	519.1	3.1	1,593.2	220.8	744.7	1,610.0	313.0
2006/07	515.0	3.0	1,549.9	216.9	743.1	1,623.7	239.9

Notes: Wheat and coarse grains trade data are on July June years through 1975/76. From 1976/77 to the present on an Oct/Sept trade year. "Stocks as a Percent of Consumption" represents the ratio of marketing year end consumption.

World Wheat and Coarse Grains: Supply and Demand

Millions of Metric Tons/Hectares

	Area Harvested	Yield	Production TY	Exports	Feed Dom. Consumpti	Domestic Consumpti	Ending Stocks
Wheat							
1977/78	227.2	1.7	377.8	71.7	85.5	396.0	109.2
1978/79	228.9	1.9	438.9	71.3	89.8	413.3	134.8
1979/80	227.8	1.8	417.5	85.5	94.0	431.9	120.5
1980/81	236.9	1.8	435.9	93.2	91.2	444.1	112.7
1981/82	238.9	1.9	445.0	100.5	90.6	445.1	112.5
1982/83	238.4	2.0	472.7	97.7	92.8	455.6	129.9
1983/84	229.9	2.1	484.3	101.2	95.6	468.9	145.3
1984/85	231.7	2.2	508.9	104.7	99.9	486.2	168.0
1985/86	229.8	2.2	494.8	83.6	97.2	484.5	178.3
1986/87	227.9	2.3	524.1	89.7	113.2	511.3	191.1
1987/88	219.7	2.3	497.9	114.1	113.6	530.3	158.6
1988/89	217.4	2.3	495.0	104.3	104.0	519.6	134.0
1989/90	225.8	2.4	533.2	103.9	103.7	531.0	136.2
1990/91	231.4	2.5	588.0	101.3	130.1	553.7	170.5
1991/92	222.5	2.4	542.9	111.4	113.8	551.5	162.0
1992/93	222.8	2.5	561.6	113.2	110.9	547.6	175.7
1993/94	222.1	2.5	558.0	101.7	108.0	552.4	181.4
1994/95	214.4	2.4	523.2	101.5	99.6	542.4	162.1
1995/96	218.8	2.5	537.9	99.2	91.9	544.8	155.3
1996/97	230.2	2.5	582.6	104.0	96.7	573.4	164.5
1997/98	228.4	2.7	610.0	104.5	101.0	577.3	197.1
1998/99	225.1	2.6	590.0	102.0	103.7	579.0	208.1
1999/00	215.4	2.7	585.8	112.7	99.7	585.0	208.9
2000/01	217.6	2.7	581.5	104.1	104.0	583.9	206.5
2001/02	214.7	2.7	581.1	110.8	106.6	585.0	202.7
2002/03	214.6	2.6	567.6	110.1	112.7	603.8	166.6
2003/04	209.9	2.6	554.6	104.5	96.7	588.5	132.7
2004/05	218.9	2.9	628.8	113.1	106.5	610.1	151.5
2005/06	218.1	2.8	618.8	113.5	111.2	623.1	147.2
2006/07	212.3	2.8	585.1	111.8	103.0	613.1	119.3
Coarse Grains							
1977/78	343.5	2.0	691.0	86.6	426.2	680.8	124.0
1978/79	340.8	2.2	744.1	90.5	467.0	724.8	143.3
1979/80	341.1	2.2	735.5	97.1	479.9	725.6	153.2
1980/81	340.7	2.1	723.5	107.4	471.4	735.1	142.6
1981/82	348.9	2.2	759.0	96.4	482.9	733.2	168.4
1982/83	338.6	2.3	775.3	92.0	500.6	741.5	202.2
1983/84	333.9	2.0	678.2	92.0	492.7	747.3	133.1
1984/85	335.3	2.4	806.1	98.9	510.0	767.4	171.9
1985/86	341.1	2.4	833.7	81.6	515.9	763.4	242.2
1986/87	337.7	2.4	823.9	85.0	531.0	788.2	277.9
1987/88	325.0	2.4	787.1	88.1	541.6	799.5	263.3
1988/89	324.9	2.2	723.0	99.0	514.2	782.9	203.4
1989/90	322.6	2.5	794.5	105.0	539.4	815.4	182.5
1990/91	317.5	2.6	828.6	88.9	536.8	815.9	195.2
1991/92	322.8	2.5	812.5	96.2	536.0	813.3	194.4
1992/93	326.4	2.7	869.3	91.9	551.2	841.9	219.3
1993/94	318.4	2.5	798.1	86.5	546.0	836.4	181.1
1994/95	323.5	2.7	869.2	98.6	567.0	853.8	196.5
1995/96	314.7	2.5	800.9	88.2	544.1	835.5	161.8
1996/97	323.4	2.8	909.0	94.4	572.4	869.1	201.7

	Area Harvested	Yield	Production TY	Exports	Feed Dom. Consumpti	Domestic Consumpti	Ending Stocks
1997/98	311.2	2.8	881.2	85.8	578.9	867.2	215.8
1998/99	308.5	2.9	890.9	96.7	574.8	869.2	237.5
1999/00	299.7	2.9	877.6	104.8	585.5	882.4	232.2
2000/01	296.7	2.9	862.3	104.4	588.9	884.5	210.0
2001/02	301.4	3.0	893.8	102.7	600.5	907.0	196.9
2002/03	293.3	3.0	875.7	104.7	595.8	902.7	169.9
2003/04	307.1	3.0	916.1	102.7	615.3	946.3	139.7
2004/05	300.2	3.4	1,014.0	102.1	641.1	975.4	178.3
2005/06	301.0	3.2	974.4	107.3	633.5	986.9	165.8
2006/07	302.7	3.2	964.8	105.1	640.1	1,010.6	120.6

Notes: Wheat and coarse grains trade data are on July June years through 1975/76. From 1976/77 to the pr on an Oct/Sept trade year. "Stocks as a Percent of Consumption" represents the ratio of marketing year end consumption.

World Corn and Barley: Supply and Demand

Millions of Metric Tons/Hectares

	Area Harvested	Yield	Production	TY Exports	Feed Dom. Consumpti	Domestic Consumpti	Ending Stocks
Corn							
1977/78	125.8	2.9	365.4	63.6	226.7	356.5	77.3
1978/79	126.0	3.1	392.1	67.1	247.0	378.0	91.4
1979/80	127.3	3.3	425.6	73.2	277.1	405.8	111.2
1980/81	131.2	3.1	408.7	77.8	279.2	417.9	102.5
1981/82	133.0	3.3	441.8	66.9	286.1	417.1	127.2
1982/83	125.2	3.5	439.9	63.2	293.5	417.3	149.8
1983/84	119.7	2.9	348.3	61.1	271.1	409.1	89.0
1984/85	129.0	3.6	458.4	66.1	289.5	429.2	118.2
1985/86	131.0	3.7	479.0	53.8	284.3	419.5	177.7
1986/87	131.9	3.6	475.4	56.9	304.6	448.3	204.9
1987/88	127.2	3.5	451.0	58.8	316.5	458.3	197.5
1988/89	126.3	3.2	400.9	66.0	306.8	453.2	145.2
1989/90	127.5	3.6	462.0	74.5	324.8	474.4	132.8
1990/91	129.4	3.7	482.1	58.8	318.3	473.6	141.2
1991/92	132.7	3.7	493.2	63.0	334.3	493.6	140.9
1992/93	133.4	4.0	536.1	62.6	348.6	512.5	162.5
1993/94	130.9	3.6	476.0	57.4	342.0	509.2	129.3
1994/95	135.3	4.1	559.0	71.9	371.1	535.3	152.9
1995/96	134.9	3.8	515.9	64.8	364.8	536.3	132.5
1996/97	141.6	4.2	592.6	66.7	387.3	559.8	165.3
1997/98	136.2	4.2	573.8	63.1	400.9	573.3	165.7
1998/99	139.2	4.4	605.7	68.7	404.2	581.1	190.4
1999/00	139.0	4.4	607.5	73.5	422.3	604.9	192.9
2000/01	137.1	4.3	590.5	76.4	427.7	610.2	173.2
2001/02	137.8	4.4	599.9	74.6	436.0	623.5	149.6
2002/03	137.7	4.4	603.0	78.4	433.1	627.1	125.4
2003/04	141.8	4.4	625.2	79.2	444.6	647.4	103.2
2004/05	144.6	4.9	712.3	76.5	471.5	685.0	130.5
2005/06	145.4	4.8	692.7	81.0	474.7	699.8	123.5
2006/07	145.5	4.7	689.1	80.7	477.9	724.1	89.5
Barley							
1977/78	83.0	1.9	157.1	10.1	113.8	158.9	19.9
1978/79	80.9	2.2	175.6	10.6	123.9	171.2	24.3
1979/80	84.0	1.8	153.8	10.2	118.5	159.2	18.9
1980/81	78.6	2.0	157.4	13.5	111.2	158.3	18.3
1981/82	81.6	1.8	149.5	14.5	109.4	151.8	16.0
1982/83	78.8	2.0	161.2	16.0	113.4	155.8	21.5
1983/84	79.8	2.0	158.5	15.8	122.0	164.5	15.5
1984/85	79.2	2.2	170.5	17.4	122.4	162.9	23.1
1985/86	80.0	2.2	173.6	17.7	127.8	167.2	29.6
1986/87	79.6	2.2	178.1	18.3	132.1	173.8	33.8
1987/88	78.7	2.2	175.3	18.3	129.7	173.6	33.4
1988/89	76.4	2.1	164.0	19.0	121.9	166.2	31.1
1989/90	73.6	2.3	166.1	18.5	126.2	170.5	26.7
1990/91	72.9	2.5	179.0	19.6	130.4	175.9	29.8
1991/92	76.4	2.2	169.8	19.4	120.2	166.3	33.3
1992/93	73.4	2.3	166.2	16.4	118.9	165.6	33.3
1993/94	74.7	2.3	169.2	18.8	123.7	168.9	33.5
1994/95	73.2	2.2	160.7	15.3	121.1	165.8	28.5
1995/96	69.0	2.1	141.6	13.4	107.7	150.6	19.5
1996/97	66.5	2.3	153.6	17.9	106.2	149.4	23.6

	Area Harvested	Yield	Production TY	Exports	Feed Dom. Consumpti	Domestic Consumpti	Ending Stocks
1997/98	64.9	2.4	154.3	12.8	103.7	145.8	32.2
1998/99	60.7	2.2	135.7	17.8	98.6	139.0	28.9
1999/00	55.3	2.3	127.5	18.8	94.0	132.3	24.0
2000/01	54.6	2.4	132.8	16.9	94.4	134.1	22.8
2001/02	56.8	2.5	142.3	17.6	95.1	136.3	28.7
2002/03	56.4	2.4	134.8	16.8	94.3	136.4	27.2
2003/04	60.1	2.4	142.9	14.8	102.6	147.5	22.6
2004/05	58.4	2.6	154.2	17.3	100.1	143.2	33.6
2005/06	56.4	2.4	138.1	17.7	96.8	142.7	28.9
2006/07	57.3	2.4	138.1	16.7	101.3	145.5	21.6

Notes: Coarse grains trade data are on July June years through 1975/76. From 1976/77 to the present, coar Oct/Sept trade year. "Stocks as a Percent of Consumption" represents the ratio of marketing year ending stc

World Rice: Supply and Demand
Millions of Metric Tons/Hectares

	Area Harvested	Yield	Rough Production	Production TY	Exports	Domestic Consumpti	Ending Stocks
Rice, Milled							
1977/78	143.4	2.6	368.8	250.6	9.5	244.7	44.8
1978/79	143.6	2.7	385.4	262.4	11.8	252.3	54.8
1979/80	141.2	2.7	376.6	256.8	12.0	257.6	54.0
1980/81	144.4	2.7	397.0	269.9	11.9	271.2	52.6
1981/82	144.4	2.8	408.3	277.9	11.3	280.0	50.5
1982/83	140.5	3.0	418.3	285.0	11.2	278.7	56.8
1983/84	144.6	3.1	450.9	306.9	11.9	294.4	69.3
1984/85	144.2	3.2	464.9	316.8	11.0	298.4	87.7
1985/86	144.8	3.2	467.3	318.0	11.8	307.9	97.7
1986/87	144.8	3.3	481.9	316.0	12.9	310.4	103.3
1987/88	141.7	3.3	465.0	315.3	11.4	313.3	105.3
1988/89	146.5	3.4	491.0	332.2	14.0	325.8	111.7
1989/90	147.6	3.5	510.4	345.3	11.7	336.4	120.6
1990/91	146.7	3.5	518.9	351.0	12.3	345.0	126.7
1991/92	147.5	3.5	522.9	353.3	14.4	353.1	126.8
1992/93	146.5	3.6	524.2	354.0	14.9	357.5	123.3
1993/94	145.4	3.6	526.5	355.0	16.6	359.2	119.1
1994/95	147.5	3.7	539.5	363.9	20.8	365.2	117.8
1995/96	148.2	3.7	547.2	368.7	19.7	368.1	118.4
1996/97	150.0	3.8	564.5	380.9	18.9	378.7	120.6
1997/98	151.2	3.8	574.4	386.9	27.6	379.6	127.9
1998/99	152.7	3.8	586.5	394.6	24.8	388.1	134.3
1999/00	155.2	3.9	608.0	408.8	22.8	398.0	145.1
2000/01	151.5	3.9	593.2	398.7	24.4	394.5	149.2
2001/02	150.5	3.9	593.9	399.1	27.9	412.0	136.4
2002/03	145.8	3.9	562.1	377.5	27.6	407.4	106.5
2003/04	148.1	3.9	584.3	391.8	27.2	412.9	85.4
2004/05	149.6	4.0	595.7	400.5	29.0	407.9	78.0
2005/06	151.7	4.1	619.1	415.8	28.1	413.5	80.3
2006/07	153.1	4.1	621.8	417.4	28.1	418.9	78.8

Notes: Stocks, exports and consumption are expressed on a milled basis in marketing years. "Stocks as a Pe represents the ratio of marketing year ending stocks to total consumption.

ENDNOTES TO GRAIN: WORLD MARKETS AND TRADE

REGIONAL TABLES

North America: Canada, Mexico, the United States.

Latin America: Central America, the Caribbean, South America.

EU: Austria, Belgium/Luxembourg, Cyprus, Czech Republic, Denmark, Estonia, Finland, France, Germany, Greece, Hungary, Ireland, Italy, Latvia, Lithuania, Malta, Netherlands, Poland, Portugal, Slovakia, Slovenia, Spain, Sweden, United Kingdom.

Former Soviet Union: Armenia, Azerbaijan, Belarus, Georgia, Kazakhstan, Kyrgyzstan, Moldova, Russia, Tajikistan, Turkmenistan, Ukraine, Uzbekistan.

Other Europe: Albania, Azores, Bosnia and Herzegovina, Bulgaria, Croatia, Gibraltar, Iceland, Macedonia, Norway, Romania, Serbia and Montenegro, Switzerland, Yugoslavia.

Middle East: Bahrain, Iran, Iraq, Israel, Jordan, Kuwait, Lebanon, Oman, Qatar, Saudi Arabia, Syria, Turkey, United Arab Emirates, Yemen.

North Africa: Algeria, Egypt, Libya, Morocco, Tunisia.

Other Africa: all African countries except North Africa.

South Asia: Afghanistan, Bangladesh, Bhutan, India, Nepal, Pakistan, Sri Lanka, Maldives.

Southeast Asia: Brunei, Burma, Cambodia, Indonesia, Laos, Malaysia, Philippines, Singapore, Thailand, Vietnam.

East Asia: China, Hong Kong, Japan, South Korea, North Korea, Macau, Mongolia, Taiwan.

Oceania: Australia, Fiji, New Zealand, Papua New Guinea.

OTHER NOTES

Stocks: Unless otherwise stated, stock data are based on an aggregate of differing local marketing years and should not be construed as representing world stock levels at a fixed point in time.

Consumption: World totals for consumption reflect total utilization, including food, seed, industrial, feed, and waste; as well as differences in marketing year imports and marketing year exports. Consumption statistics for regions and individual countries, however, reflect food, seed, industrial, feed, and waste only.

EU Consolidation: The trade figures for the EU-25 for the years 1999/00 through 2002/03 are inflated by the two-way trade between the two groups (EU-15 and acceding 10). Over the past 6 years, this “intra-trade” has averaged about 700,000 tons for wheat, 350,000 tons each for corn and barley, and 150,000 tons for rye. The trade figures also include intra-trade between members of the acceding 10. From 2003/04 onward, all intra-trade has been removed.

Statistics: (1) Wheat trade statistics include wheat, flour, and selected products on a grain equivalent basis. (2) Rice trade statistics include rough, brown, milled, and broken on a milled equivalent basis. (3) Coarse grains statistics include corn, barley, sorghum, oats, rye, millet, and mixed grains but exclude trade in barley malt, millet, and mixed grains.

Unaccounted: This term includes grain in transit, reporting discrepancies in some countries, and trade to countries outside the USDA database.

The Grain and Feed Division, Commodity and Marketing Programs, Foreign Agricultural Service, USDA, Washington DC 20250, prepared this circular. Information is gathered from official statistics of foreign governments and other foreign source materials, reports of U.S. agricultural attachés and Foreign Service officers, office research, and related information. Further information may be obtained by writing the Division or telephoning (202) 720-6219.

Note: The previous report in this series was the Grain: World Markets and Trade Foreign Agricultural Service Circular FG 09-06 September 2006. For further details on world grain production, see World Agricultural Production Foreign Agricultural Service Circular WAP 10-06 October 2006.

This circular is available in its entirety on the World Wide Web via the Foreign Agricultural Service Home Page. The address is: <http://www.fas.usda.gov>