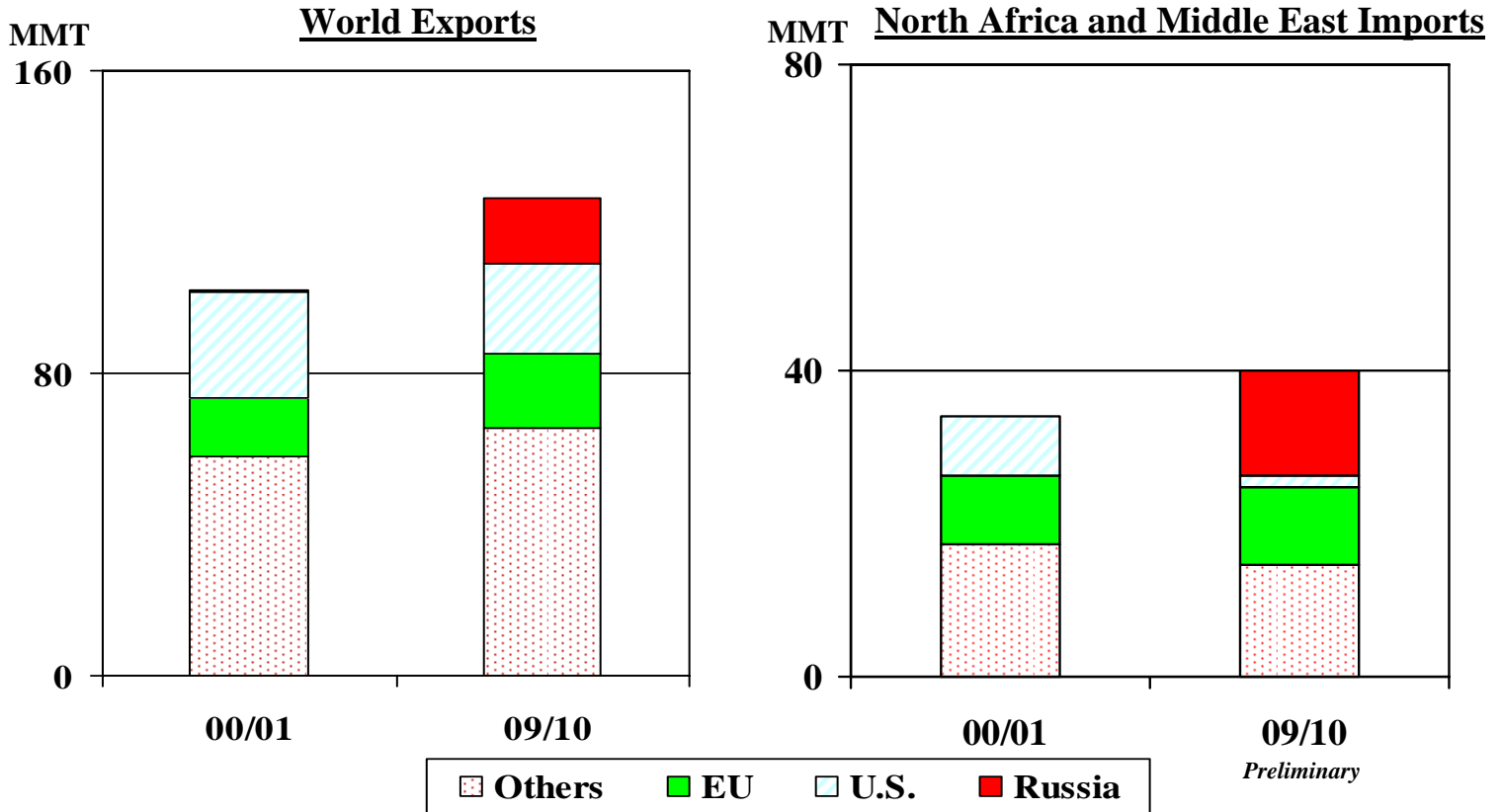




Grain: World Markets and Trade

Russia Displaces Other Wheat Exporters



Over the past 10 years, world wheat trade has grown 25 percent (24 MMT), and Russia has grabbed 70 percent (17 MMT) of that growth. This represents a dramatic change for a country that once was a perennial importer of 10-14 MMT.

Seventy to eighty percent of Russia’s expansion has gone to markets in North Africa and the Middle East where it has comparative advantages in prices, logistics, and freight.

The EU has been able to maintain its competitive position because it also has the advantages of competitive prices, proximity, and historical cultural ties. In contrast, the U.S. market share has plummeted, as U.S. prices remain uncompetitive, and freight and logistics are unfavorable to many markets.

TABLE OF CONTENTS

World Markets and Trade: Commentary and Current Data	
Wheat	4
Rice	9
Coarse Grains.....	13
Historical Data Series for Selected Regions and Countries	33
Endnotes to Grain: World Markets and Trade	52

The Foreign Agricultural Service (FAS) updates its production, supply and distribution database for cotton, oilseeds, and grains at 9 a.m. on the day the World Agricultural Supply and Demand Estimates (WASDE) report is released. It is available on the FAS website (<http://www.fas.usda.gov/psdonline/>). This circular is released at 10:00 a.m. on the same day, together with its downloadable data set.

All Grain Summary Comparison

Marketing Year	Wheat			Rice, Milled			Corn			
	2007/08	2008/09	2009/10	2007/08	2008/09	2009/10	2007/08	2008/09	2009/10	
Production										
United States	(Jun-May)	55.8	68.0	60.3	6.3	6.5	7.0	331.2	307.1	333.5
Other		555.2	615.3	618.1	427.7	440.7	433.8	461.3	487.7	472.1
World Total		611.0	683.3	678.4	434.0	447.2	440.8	792.4	794.8	805.7
Domestic Consumption										
United States	(Jun-May)	28.6	34.3	31.9	4.1	4.1	4.3	261.6	259.1	279.8
Other		584.9	599.7	614.9	422.1	431.4	435.3	510.1	516.0	525.4
World Total		613.5	634.0	646.8	426.1	435.5	439.6	771.7	775.0	805.2
Ending Stocks										
United States	(Jun-May)	8.3	17.9	25.8	0.9	1.0	1.0	41.3	42.5	48.2
Other		114.3	147.4	170.0	80.1	89.9	89.2	88.6	105.0	96.0
World Total		122.7	165.2	195.8	81.0	90.9	90.2	129.9	147.5	144.2
TY Imports										
United States	(Jun-May)	3.0	3.5	3.3	0.7	0.7	0.7	0.5	0.3	0.3
Other		110.6	136.1	120.6	27.8	26.0	27.7	99.5	81.6	82.0
World Total		113.6	139.6	123.8	28.4	26.7	28.4	100.0	82.0	82.3
TY Exports										
United States	(Jun-May)	34.3	27.3	23.5	3.3	3.0	3.3	60.7	47.9	48.0
Other		82.1	115.3	102.8	26.5	25.8	26.7	37.5	35.9	37.4
World Total		116.5	142.6	126.3	29.7	28.8	30.0	98.2	83.8	85.4

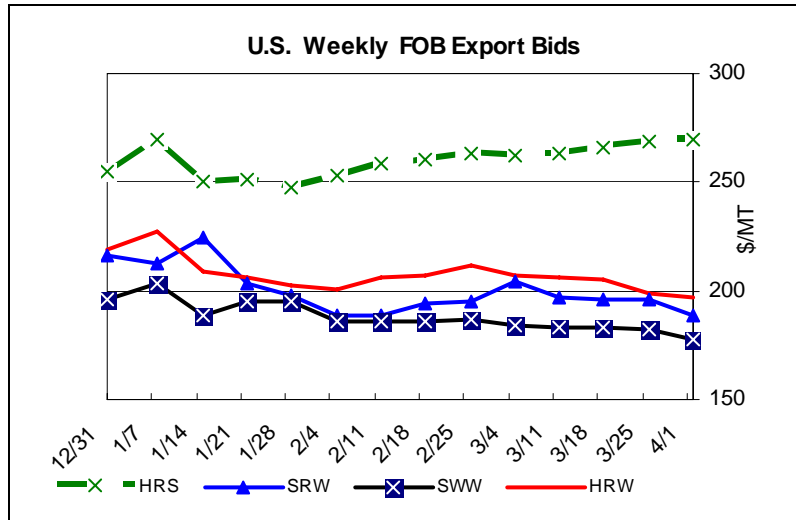
Note: Consumption in this table has not been adjusted for differences in marketing year imports and exports and therefore differs from global totals shown elsewhere.

Marketing years for U.S. grains are: Wheat (Jun-May), Rice (Aug-Jul), Corn (Sep-Aug).
'Marketing Year' column is germane for U.S. wheat only.

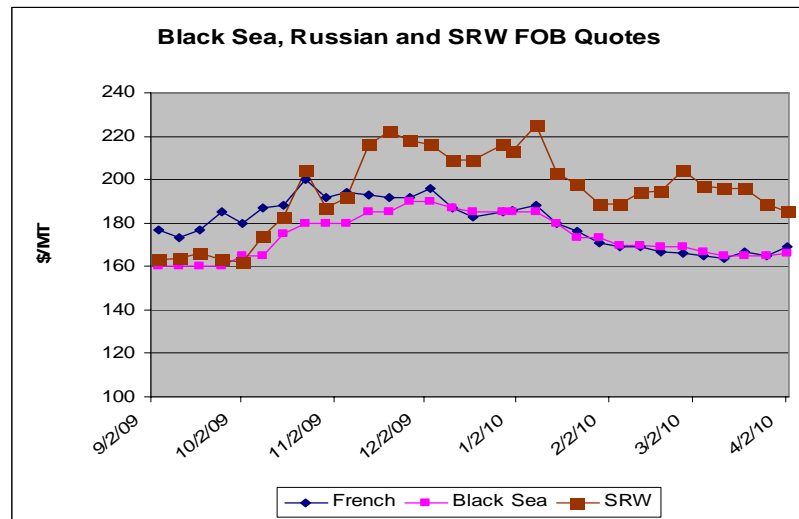
WHEAT: WORLD MARKETS AND TRADE

PRICES:

Domestic: Prices for most wheat classes dropped in April, except for Hard Red Spring (HRS) which increased \$8/ton. Hard Red Winter (HRW) quotes fell \$10/ton, White Wheat (SWW) dropped \$6/ton and Soft Red Winter dropped \$12/ton. The price gap between HRS and other classes continued to grow this month ahead of spring planting and reflecting continued tightness of higher quality HRS.



Foreign: While prices of French and Black Sea wheat were flat over the month, SRW prices declined, narrowing the divergence among the three exporters. Despite the drop in SRW prices (and other classes), U.S. wheat remains uncompetitive except to its traditional buyers.



- Note: The **Argentine** production series prior to 2009/10 is revised as recently available government mill grind data combined with exports indicate higher wheat usage in prior years than supportable by government production estimates. Changes to the Argentine domestic consumption series reflect this latest government usage data. However, exports for 2009/10 are unchanged this month.

TRADE CHANGES IN 2009/10

Selected Exporters:

- **Australia** is reduced 500,000 tons to 14.0 million due to the slower-than-expected pace of exports.
- **Canada** is lowered 500,000 tons to 18.0 million on the slowing pace of durum shipments.
- **EU** is raised 1.0 million tons to 20.0 million on the strong pace of export licenses and the increased competitiveness vis-à-vis other exporters.
- **Russia** is cut 500,000 tons to 17.5 million on strong competition from the EU and Turkey.
- **Turkey** is up 600,000 tons to 3.2 million on larger exports of wheat and flour to markets such as Iraq, Syria, and Indonesia.
- The **United States** is higher by 1.0 million tons to 23.5 million on the stronger export pace over the last several months.

Selected Importers:

- **Algeria** is reduced 300,000 tons to 5.0 million based on the Government's recent announcement suspending further durum imports due to relatively large domestic supplies.
- **Egypt** is up 500,000 tons to 9.3 million on the strong import pace.
- **EU** is cut 500,000 tons to 6.0 million on abundant supplies of low-priced wheat and other feed grains.
- **Turkey** is raised 300,000 tons to 2.8 million on larger-than-expected imports, particularly from Kazakhstan.

World Wheat, Flour, and Products Trade
July/June Year, Thousand Metric Tons

	2005/06	2006/07	2007/08	2008/09	2009/10 Mar	2009/10 Apr
TY Exports						
Argentina	8,385	12,231	10,246	8,627	4,500	4,500
Australia	15,211	11,241	7,449	13,452	14,500	14,000
Canada	15,633	19,278	16,561	18,583	18,500	18,000
EU-27	15,701	13,816	12,271	25,318	19,000	20,000
Kazakhstan	3,817	8,089	8,181	5,701	7,500	7,500
Mexico	533	548	1,261	1,406	1,200	1,200
Russia	10,514	10,584	12,552	18,393	18,000	17,500
Turkey	3,208	2,200	1,763	2,342	2,600	3,200
Ukraine	6,461	3,366	1,236	13,037	9,000	9,000
Uruguay	25	253	422	703	1,100	1,100
Others	7,224	9,024	10,189	7,740	7,199	6,819
Subtotal	86,712	90,630	82,131	115,302	103,099	102,819
United States	27,252	25,041	34,328	27,295	22,500	23,500
World Total	113,964	115,671	116,459	142,597	125,599	126,319
TY Imports						
Afghanistan	500	1,400	2,300	3,800	2,000	2,000
Algeria	5,476	4,874	5,904	6,359	5,300	5,000
Bangladesh	2,034	1,731	1,555	2,882	3,000	3,000
Brazil	5,823	7,704	7,136	6,367	6,500	6,500
Egypt	7,771	7,300	7,700	9,900	8,800	9,300
EU-27	6,758	5,137	6,942	7,740	6,500	6,000
Indonesia	4,981	5,596	5,224	5,423	5,500	5,500
Iran	1,105	700	200	9,300	3,500	3,500
Iraq	4,996	2,912	3,424	3,868	4,000	4,000
Israel	1,663	1,458	1,186	2,060	1,900	1,700
Japan	5,469	5,747	5,701	5,156	5,300	5,300
Korea, South	3,884	3,439	3,092	3,371	4,000	4,000
Libya	1,722	994	1,567	1,677	1,850	1,850
Mexico	3,549	3,610	3,136	3,341	2,900	2,900
Morocco	2,390	1,802	4,192	3,759	1,800	1,800
Nigeria	3,678	3,265	2,677	3,550	3,500	3,700
Peru	1,644	1,367	1,452	1,385	1,500	1,500
Philippines	2,954	2,754	2,266	3,201	3,000	3,000
Saudi Arabia	77	91	48	1,400	1,800	1,800
South Africa	1,242	885	1,333	1,500	1,500	1,500
Sudan	1,659	1,323	1,060	1,712	1,700	1,700
Syria	231	200	200	1,700	2,000	2,000
Turkey	64	1,778	2,192	3,577	2,500	2,800
Venezuela	1,691	1,765	1,498	1,500	1,525	1,525
Yemen	2,170	2,414	1,867	2,794	2,300	2,300
Others	35,312	39,912	36,732	38,787	35,740	36,390
Subtotal	108,843	110,158	110,584	136,109	119,915	120,565
Unaccounted	2,822	2,119	2,863	3,028	2,434	2,504
United States	2,299	3,394	3,012	3,460	3,250	3,250
World Total	113,964	115,671	116,459	142,597	125,599	126,319

TY=Trade Year, see Endnotes.

World Wheat Production, Consumption, and Stocks
Local Marketing Years, Thousand Metric Tons

	2005/06	2006/07	2007/08	2008/09	2009/10 Mar	2009/10 Apr
Production						
Argentina	13,800	16,300	18,600	10,100	9,600	9,600
Australia	25,173	10,822	13,569	20,939	22,500	22,500
Canada	25,748	25,265	20,054	28,611	26,500	26,500
China	97,445	108,466	109,298	112,464	114,500	114,500
Egypt	8,184	8,274	8,275	7,883	7,900	7,900
EU-27	132,356	124,870	120,133	151,080	138,143	138,143
India	68,640	69,350	75,810	78,570	80,680	80,680
Iran	14,308	14,500	15,000	10,000	12,000	12,000
Kazakhstan	11,200	13,450	16,450	12,550	17,000	17,000
Morocco	3,043	6,327	1,583	3,730	6,370	6,370
Pakistan	21,612	21,277	23,295	20,959	24,000	24,033
Russia	47,700	44,900	49,400	63,700	61,700	61,700
Turkey	18,500	17,500	15,500	16,800	17,800	18,000
Ukraine	18,700	14,000	13,900	25,900	20,900	20,900
Uzbekistan	5,800	5,850	6,200	6,000	6,200	6,200
Others	49,602	45,544	48,131	45,973	51,900	52,083
Subtotal	561,811	546,695	555,198	615,259	617,693	618,109
United States	57,243	49,217	55,821	68,016	60,314	60,314
World Total	619,054	595,912	611,019	683,275	678,007	678,423
Total Consumption						
Algeria	7,750	7,850	8,050	8,300	8,750	8,600
Brazil	10,450	10,300	10,300	10,700	11,200	11,200
Canada	8,242	8,986	6,787	8,027	8,100	8,100
China	101,500	102,000	106,000	102,500	103,000	103,000
Egypt	14,800	15,400	16,000	16,900	17,050	17,000
EU-27	127,525	125,500	116,536	127,500	127,000	125,500
India	69,980	73,371	76,422	70,770	76,930	76,930
Iran	14,800	15,300	15,500	15,900	16,200	16,200
Kazakhstan	7,400	7,500	7,500	7,525	7,550	7,550
Morocco	6,800	7,200	7,225	7,450	7,650	7,800
Pakistan	20,900	21,900	22,400	22,800	23,300	23,200
Russia	38,400	36,400	37,650	38,900	41,200	42,200
Turkey	16,100	16,650	16,800	16,900	17,400	17,300
Ukraine	12,500	11,700	12,300	11,900	12,100	12,600
Uzbekistan	6,118	6,500	6,800	7,050	7,250	7,250
Others	122,561	121,355	118,651	126,556	129,643	130,432
Subtotal	591,534	585,048	588,686	606,412	615,180	615,905
United States	31,320	30,940	28,614	34,291	31,624	31,926
World Total	622,854	615,988	617,300	640,703	646,804	647,831
Ending Stocks						
Canada	9,698	6,865	4,406	6,556	6,856	7,356
China	34,387	38,450	38,963	48,685	59,985	59,985
Egypt	3,958	4,122	4,072	4,945	4,983	5,135
EU-27	23,384	14,075	12,343	18,345	16,988	16,988
India	2,000	4,500	5,800	13,510	17,210	17,460
Iran	3,257	3,507	3,157	3,907	4,157	4,157
Russia	5,454	4,231	3,869	10,479	13,179	12,679
Others	51,329	40,772	41,722	40,933	46,183	46,215
Subtotal	133,467	116,522	114,332	147,360	169,541	169,975
United States	15,545	12,414	8,323	17,867	27,234	25,844
World Total	149,012	128,936	122,655	165,227	196,775	195,819

Regional Wheat Imports, Production, Consumption, and Stocks

Thousand Metric Tons

	2005/06	2006/07	2007/08	2008/09	Mar 2009/10	Apr 2009/10
TY Imports						
North America	6,135	7,325	6,535	7,188	6,550	6,550
Central America	1,506	1,582	1,460	1,483	1,475	1,475
South America	12,304	13,979	13,143	12,746	12,840	12,840
European Union	6,758	5,137	6,942	7,740	6,500	6,000
Other Europe	1,457	1,480	1,923	1,690	1,675	1,675
Former Soviet Union - 12	5,507	5,958	6,021	6,544	5,500	5,500
Middle East	13,452	12,050	11,736	28,348	21,200	21,500
North Africa	18,622	16,403	21,735	23,467	19,050	19,250
Sub-Saharan Africa	13,174	11,735	10,371	13,363	13,695	14,020
East Asia	12,852	11,886	11,278	11,322	12,450	12,450
South Asia	4,812	10,944	8,270	10,713	6,715	6,815
Southeast Asia	11,923	12,437	11,405	12,328	12,700	12,925
Others	2,640	2,636	2,777	2,637	2,815	2,815
Total	111,142	113,552	113,596	139,569	123,165	123,815
Production						
North America	86,011	77,722	79,468	100,627	91,114	91,114
South America	21,772	21,222	25,435	19,623	18,453	18,452
European Union	132,356	124,870	120,133	151,080	138,143	138,143
Other Europe	4,196	4,313	4,405	4,712	4,609	4,609
Former Soviet Union - 12	91,070	84,905	92,493	115,457	113,827	113,827
Middle East	42,975	41,771	39,941	32,317	36,560	36,780
North Africa	15,178	18,576	13,948	14,588	19,395	19,395
Sub-Saharan Africa	5,219	5,724	5,547	6,449	6,057	6,057
East Asia	98,652	109,669	110,590	113,706	115,711	115,711
South Asia	96,034	95,881	105,070	103,329	111,200	111,383
Oceania	25,466	11,099	13,846	21,216	22,777	22,777
Others	125	160	143	171	161	175
Total	619,054	595,912	611,019	683,275	678,007	678,423
Domestic Consumption						
North America	45,662	46,126	40,901	48,318	45,674	45,976
South America	24,226	24,301	24,421	24,574	24,900	24,845
European Union	127,525	125,500	116,536	127,500	127,000	125,500
Other Europe	5,917	5,495	5,600	5,644	5,855	5,855
Former Soviet Union - 12	75,066	72,627	74,952	76,645	79,375	80,875
Middle East	50,428	51,228	50,572	53,323	53,600	53,650
North Africa	33,847	34,205	35,867	37,452	38,525	38,475
Sub-Saharan Africa	17,782	16,752	15,870	18,873	19,368	19,673
East Asia	114,116	113,938	117,556	114,118	115,470	115,470
South Asia	100,310	105,160	109,487	104,405	112,190	112,240
Southeast Asia	11,489	11,712	10,977	12,121	12,520	12,759
Oceania	7,484	8,545	7,394	7,699	8,025	8,025
Others	3,294	3,263	3,402	3,297	3,445	3,445
Total	617,146	618,852	613,535	633,969	645,947	646,788
Ending Stocks						
North America	25,555	19,693	13,111	24,740	34,457	33,567
South America	4,207	4,375	5,158	3,160	3,652	3,687
European Union	23,384	14,075	12,343	18,345	16,988	16,988
Other Europe	1,333	1,067	1,037	1,290	1,004	1,004
Former Soviet Union - 12	15,402	11,293	12,647	20,345	25,172	24,172
Middle East	13,520	12,041	10,634	12,317	14,013	14,085
North Africa	9,201	9,718	9,262	9,618	9,285	9,553
Sub-Saharan Africa	1,458	1,731	1,563	2,074	2,108	2,108
East Asia	36,606	40,838	41,781	51,519	62,595	62,595
South Asia	6,285	7,057	8,482	15,817	21,188	21,247
Southeast Asia	2,251	2,605	2,549	2,432	2,297	2,297
Oceania	9,544	4,159	3,841	3,301	3,818	4,318
Others	266	284	247	269	198	198
Total	149,012	128,936	122,655	165,227	196,775	195,819

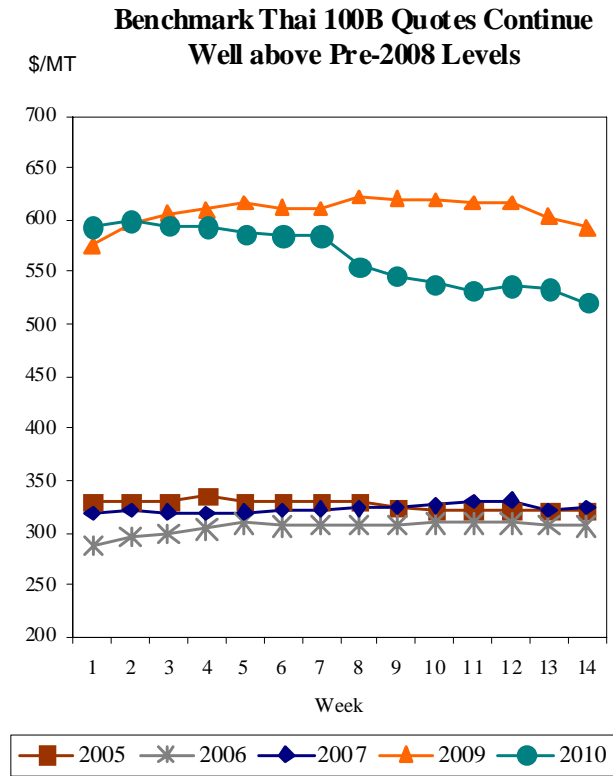
NOTES: Regional definitions appear on last page of this circular. Imports are reported on a trade year basis. All other data are reported using local marketing years.

RICE: WORLD MARKETS AND TRADE

PRICES:

International: Despite the decline of \$73 per ton during the first 14 weeks of 2010, benchmark Thai 100B quotes remain substantially above pre-2008 levels when prices spiked under unusual economic conditions. Policies in importing and exporting countries are putting upward pressure on prices by limiting supplies on the market even though global production and stocks are larger than in 2008 and the years just prior. The uncertainty surrounding these policies makes it difficult to predict prices and is causing buyers to delay purchases in hopes that prices will fall.

Domestic: Mirroring other origins, U.S. #2/4 long grain milled rice quotes slid \$31 this month to \$502 per ton, FOB, while California medium grain #1/4 quotes dropped another \$50 this month to \$575.



SELECTED TRADE CHANGES IN 2010 (unless otherwise noted)

- **Burma's** exports are lowered 200,000 tons to 600,000 after large 2009 exports depleted stocks.
- **Pakistan's** exports are slashed 500,000 tons to 3.3 million on lower demand from key markets.
- **United States** exports are boosted 150,000 tons to 3.3 million based in part on large sales to Venezuela and Turkey.
- **Iran's** imports are dropped 300,000 tons to 1.4 million for 2009 and 2010 on reportedly smaller purchases.
- **Philippines** imports are cut 400,000 tons to 2.6 million on the current expectation that additional purchases are not needed.

World Rice Trade
January/December Year, Thousand Metric Tons

	2005/06	2006/07	2007/08	2008/09	2009/10 Mar	2009/10 Apr
TY Exports						
Argentina	487	436	408	594	550	550
Brazil	291	201	511	591	300	300
Burma	47	31	541	1,052	800	600
Cambodia	350	450	500	800	800	800
China	1,216	1,340	969	783	850	850
Egypt	958	1,209	750	500	600	600
EU-27	144	139	157	140	135	135
Guyana	250	210	210	250	220	220
India	4,537	6,301	3,383	2,000	2,000	2,000
Japan	200	200	200	200	200	200
Pakistan	3,579	2,696	3,000	3,000	3,800	3,300
Peru	10	20	17	90	90	100
Thailand	7,376	9,557	10,011	8,570	10,000	10,000
Uruguay	812	734	742	926	750	800
Vietnam	4,705	4,522	4,649	5,950	5,750	5,750
Others	876	809	420	377	426	466
Subtotal	25,838	28,855	26,468	25,823	27,271	26,671
United States	3,307	3,029	3,273	2,950	3,150	3,300
World Total	29,145	31,884	29,741	28,773	30,421	29,971
TY Imports						
Bangladesh	531	1,570	1,658	150	500	500
Brazil	691	684	417	648	750	750
Canada	333	341	365	322	340	340
Cote d'Ivoire	750	980	800	800	860	860
Cuba	594	574	558	457	550	550
EU-27	1,221	1,342	1,520	1,350	1,350	1,350
Ghana	440	340	300	400	350	350
Guinea	200	240	175	150	330	330
Haiti	399	292	320	300	325	325
Hong Kong	309	348	399	395	400	400
Iran	1,500	1,500	1,550	1,400	1,700	1,400
Iraq	1,306	613	975	1,078	1,100	1,100
Japan	681	642	546	750	700	700
Malaysia	886	799	1,039	1,070	1,020	1,020
Mexico	586	609	578	610	600	600
Mozambique	330	410	300	350	350	350
Nigeria	1,600	1,550	1,800	2,000	1,800	1,800
Philippines	1,791	1,900	2,500	2,000	3,000	2,600
Saudi Arabia	958	961	1,166	1,049	1,100	1,100
Senegal	600	700	860	715	700	700
Singapore	350	393	320	300	350	350
South Africa	800	960	650	745	800	800
Syria	214	235	230	300	310	350
Vietnam	350	450	300	500	500	500
Yemen	250	338	315	325	325	325
Others	8,123	9,900	8,123	7,853	8,234	8,226
Subtotal	25,793	28,671	27,764	26,017	28,344	27,676
Unaccounted	2,719	2,518	1,326	2,074	1,342	1,560
United States	633	695	651	682	735	735
World Total	29,145	31,884	29,741	28,773	30,421	29,971

TY=Trade Year, see Endnotes.

Note about dates: 2009/10 is calendar year 2010, 2008/09 is calendar year 2009, and so on.

World Rice Production, Consumption, and Stocks
Local Marketing Years, Thousand Metric Tons

	2005/06	2006/07	2007/08	2008/09	2009/10 Mar	2009/10 Apr
Milled Production						
Bangladesh	28,758	29,000	28,800	31,000	31,600	31,600
Brazil	7,874	7,695	8,199	8,569	7,820	7,820
Burma	10,440	10,600	10,730	10,150	10,730	10,597
Cambodia	3,771	3,946	4,238	4,520	4,630	4,630
China	126,414	127,200	130,224	134,330	137,000	137,000
Egypt	4,135	4,383	4,385	4,387	4,374	4,374
India	91,790	93,350	96,690	99,150	87,000	87,000
Indonesia	34,959	35,300	37,000	38,300	38,800	38,800
Japan	8,257	7,786	7,930	8,029	7,620	7,620
Korea, South	4,768	4,680	4,408	4,843	4,910	4,910
Nigeria	2,700	2,900	3,000	3,200	3,400	3,400
Pakistan	5,547	5,450	5,700	6,700	6,200	6,500
Philippines	9,821	9,775	10,479	10,753	10,100	10,100
Thailand	18,200	18,250	19,800	19,850	20,400	20,300
Vietnam	22,772	22,922	24,375	24,388	24,300	24,300
Others	31,268	31,023	31,703	32,517	34,364	34,834
Subtotal	411,474	414,260	427,661	440,686	433,248	433,785
United States	7,105	6,267	6,344	6,515	7,030	7,030
World Total	418,579	420,527	434,005	447,201	440,278	440,815
Consumption and Residual						
Bangladesh	29,000	29,764	30,747	31,000	32,000	32,000
Brazil	8,460	7,925	8,254	8,529	8,600	8,600
Burma	10,400	10,670	10,249	9,648	9,850	10,000
Cambodia	3,571	3,646	3,788	3,770	3,880	3,880
China	128,000	127,200	127,450	133,000	134,500	134,500
Egypt	3,320	3,276	3,340	4,000	4,000	4,000
India	85,088	86,700	90,466	91,050	89,000	89,000
Indonesia	35,739	35,900	36,350	37,090	37,600	37,600
Iran	3,274	3,294	3,297	3,400	3,600	3,500
Japan	8,250	8,250	8,177	8,326	8,200	8,200
Korea, South	4,766	4,887	4,670	4,960	4,978	4,978
Nigeria	4,300	4,400	4,500	5,150	5,300	5,300
Philippines	10,722	12,000	13,499	13,650	13,785	13,785
Thailand	9,544	9,780	9,600	9,500	9,600	9,600
Vietnam	18,392	18,775	19,400	19,000	19,150	19,150
Others	46,037	47,543	48,279	49,333	50,641	51,207
Subtotal	412,131	417,295	424,065	433,208	436,404	437,164
United States	3,828	4,102	4,078	4,100	4,168	4,344
World Total	415,959	421,397	428,143	437,308	440,572	441,508
Ending Stocks						
China	36,783	35,915	38,015	38,899	40,849	40,849
India	10,520	11,430	13,000	19,000	15,000	15,000
Indonesia	3,207	4,607	5,607	7,057	8,487	8,487
Japan	2,395	2,406	2,556	2,715	2,635	2,635
Philippines	5,293	4,868	4,418	4,121	3,436	3,036
Thailand	3,594	2,510	2,707	4,787	5,887	5,787
Vietnam	1,317	1,392	2,018	1,956	1,856	1,856
Others	11,530	10,746	11,739	11,386	11,470	11,519
Subtotal	74,639	73,874	80,060	89,921	89,620	89,169
United States	1,371	1,266	942	974	1,305	1,033
World Total	76,010	75,140	81,002	90,895	90,925	90,202

Note: All data are reported on a milled basis.

Regional Rice Imports, Production, Consumption, and Stocks

Thousand Metric Tons

	2005/06	2006/07	2007/08	2008/09	Mar 2009/10	Apr 2009/10
TY Imports						
North America	1,552	1,645	1,594	1,614	1,675	1,675
Caribbean	1,111	965	1,028	866	980	980
South America	1,095	1,080	1,119	1,206	1,355	1,355
Other Europe	138	137	98	126	120	120
Former Soviet Union - 12	509	368	361	373	325	317
Middle East	5,204	4,778	5,596	5,276	5,610	5,350
North Africa	233	355	275	170	170	170
Sub-Saharan Africa	7,512	7,804	7,569	8,042	8,245	8,245
East Asia	2,017	2,318	1,612	1,862	1,876	1,876
South Asia	925	1,962	2,063	490	910	910
Southeast Asia	4,120	5,749	4,672	4,548	5,505	5,130
Others	2,010	2,205	2,428	2,126	2,308	2,283
Total	26,426	29,366	28,415	26,699	29,079	28,411
Production						
North America	7,286	6,445	6,522	6,671	7,220	7,205
Caribbean	685	798	796	882	962	984
South America	14,557	14,292	15,649	15,848	15,021	15,332
European Union	1,731	1,676	1,757	1,680	1,994	1,994
Former Soviet Union - 12	871	1,000	1,005	915	1,095	1,095
Middle East	2,372	2,282	2,410	2,085	2,496	2,493
North Africa	4,170	4,413	4,406	4,408	4,409	4,409
Sub-Saharan Africa	8,804	9,376	9,557	10,468	11,016	11,016
East Asia	142,492	142,661	145,044	150,104	152,250	152,460
South Asia	131,377	133,111	136,570	142,202	130,698	130,998
Southeast Asia	102,944	103,778	109,723	111,253	112,451	112,139
Others	1,290	695	566	685	666	690
Total	418,579	420,527	434,005	447,201	440,278	440,815
Domestic Consumption						
North America	4,936	5,231	5,143	5,183	5,288	5,449
Central America	1,076	1,106	1,129	1,114	1,073	1,090
Caribbean	1,732	1,829	1,863	1,769	1,949	1,956
South America	13,982	13,398	14,043	14,490	14,672	14,752
European Union	2,651	2,911	3,185	2,970	3,114	3,114
Former Soviet Union - 12	1,351	1,349	1,319	1,284	1,330	1,321
Middle East	7,629	7,330	7,543	7,821	7,979	7,838
North Africa	3,575	3,546	3,636	4,126	4,195	4,195
Sub-Saharan Africa	16,581	17,050	17,453	18,043	19,210	19,210
East Asia	144,371	144,289	143,315	149,722	150,903	151,113
South Asia	121,683	124,366	129,685	131,222	129,845	130,245
Southeast Asia	92,457	94,993	97,166	97,210	98,670	98,762
Others	667	714	664	552	624	599
Total	412,691	418,112	426,144	435,506	438,852	439,644
Ending Stocks						
North America	1,530	1,409	1,135	1,140	1,476	1,204
Central America	271	299	255	207	202	202
Caribbean	225	178	134	109	106	121
South America	2,219	2,270	2,515	2,502	2,071	2,199
European Union	1,181	1,138	1,126	1,020	1,115	1,115
Middle East	2,079	1,697	1,977	1,591	1,812	1,522
North Africa	366	370	685	792	576	576
Sub-Saharan Africa	1,330	1,021	1,341	988	1,029	1,029
East Asia	40,329	39,317	41,537	42,641	44,741	44,741
South Asia	11,317	12,636	14,306	21,193	16,986	17,386
Southeast Asia	14,469	14,426	15,780	18,562	20,655	19,944
Oceania	515	230	52	26	22	29
Others	179	149	159	124	134	134
Total	76,010	75,140	81,002	90,895	90,925	90,202

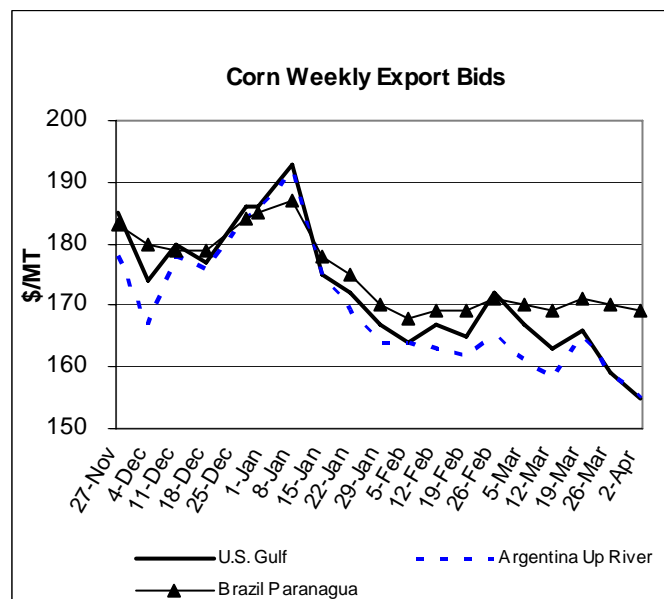
NOTES: Regional definitions appear on last page of this circular. Imports are reported on a trade year basis. All other data are reported using local marketing years.

COARSE GRAINS: WORLD MARKETS AND TRADE

PRICES:

In March, U.S. corn export quotes slid in front of the March 31 USDA data on grain stocks and prospective plantings, despite a pickup in export sales and shipments. Argentine quotes, however, were mostly firm in the face of strong exports but weakened toward the month's end in line with U.S. prices.

Brazilian quotes were largely flat with strong domestic demand and weak export sales and shipments.



Argentine Data Series Revisions: Production data were revised for barley, corn, oats, and sorghum dating back about 20 years based on government estimates. For barley, extensive revisions were also made to supply and distribution data showing higher FSI (food, seed, and industrial) use arising from strong malt exports and increased domestic beer production. (PSD data exclude trade in barley malt). Barley area is raised above government estimates for 2006/07 through 2008/09 as exports and consumption during this period exceed available supplies as indicated by government production estimates.

TRADE CHANGES IN 2009/10

Selected Exporters

- **Burmese corn** is boosted 250,000 tons to 350,000 with strong exports to neighboring countries.
- **Chinese corn** is cut by 350,000 tons to 150,000 because of slow exports and strong domestic feed demand.
- **Thai corn** is boosted 250,000 tons to 1.0 million, the largest is nearly 2 decades, because of strong regional demand and large exportable supplies. Government support programs resulted in large intervention stocks which are favorably priced for export.
- **Australian barley** is lowered 400,000 tons to 3.4 million based on slow exports and greater competition from continued feed-barley export tenders from Turkey.

-
- **Turkish barley** is raised 200,000 tons to 800,000 due to more aggressive export tenders by the Turkish Grain Board.
 - **Argentine sorghum** is raised 200,000 tons to 1.2 million based on prospects for the largest crop in over 20 years.
 - **Australian sorghum** is cut 200,000 tons to 900,000 in the face of competition from Argentina and the United States.

Selected Importers

- **Egyptian corn** is boosted sharply by 800,000 tons to 5.0 million because of strong demand from the poultry industry.
- **Iranian corn** is raised 300,000 tons to 3.2 million based on the pace of shipments.
- **Malaysian corn** is cut 300,000 tons to 2.5 million based on the slow pace of purchases and shipments, despite expectations of a rebound in economic growth and livestock production.
- **Mexican corn** is slashed 1.5 million tons to 8.0 million based on the slow pace of purchases and shipments in the face of weak feed grain demand. **Mexican sorghum** is cut 200,000 tons to 2.5 million because of larger-than-expected supplies.
- **Syrian barley** is lowered 300,000 tons to 700,000 based on the slow pace of imports and better production prospects for 2010.

World Coarse Grain Trade
October/September Year, Thousand Metric Tons

	2005/06	2006/07	2007/08	2008/09	2009/10 Mar	2009/10 Apr
TY Exports						
Argentina	11,243	17,191	17,786	10,241	13,605	13,805
Australia	5,614	1,993	3,895	4,874	5,060	4,460
Brazil	2,826	8,188	8,032	7,187	8,105	8,105
Canada	4,010	3,787	6,379	3,848	3,625	3,625
EU-27	3,652	5,463	4,679	4,338	3,280	3,280
India	501	721	5,539	2,642	1,625	1,625
Russia	1,452	1,836	1,419	4,943	2,450	2,500
Serbia	nr	863	132	1,478	2,005	2,005
South Africa	1,429	462	1,145	2,159	2,540	2,540
Ukraine	7,439	3,942	5,909	11,380	11,015	11,015
Others	8,888	10,992	5,519	5,638	5,570	6,080
Subtotal	47,054	55,438	60,434	58,728	58,880	59,040
United States	61,443	59,157	68,289	51,718	51,950	51,950
World Total	108,497	114,595	128,723	110,446	110,830	110,990
TY Imports						
Algeria	2,139	2,588	2,433	2,078	2,100	2,100
Brazil	1,107	1,472	1,258	1,494	950	950
Canada	2,029	2,285	3,187	1,900	2,070	2,070
Chile	1,678	1,766	1,969	1,261	1,625	1,750
China	2,306	1,156	1,157	1,651	1,735	1,735
Colombia	3,380	3,714	3,603	3,520	3,775	3,775
Dominican Republic	1,068	1,212	1,074	973	1,000	1,000
Egypt	4,418	4,845	4,174	5,097	4,225	5,025
EU-27	2,883	8,738	19,892	2,996	2,830	2,830
Iran	3,000	3,600	3,900	5,000	3,700	4,000
Israel	1,588	1,684	1,776	1,307	1,425	1,400
Japan	19,765	19,668	19,210	19,611	19,460	19,460
Jordan	1,234	1,186	889	825	850	850
Kenya	115	6	210	1,316	1,060	1,060
Korea, South	8,545	8,797	9,358	7,254	7,570	7,570
Malaysia	2,517	2,363	3,181	2,447	2,800	2,500
Mexico	9,928	11,040	11,011	10,467	12,400	10,700
Morocco	1,975	2,150	2,185	1,784	1,735	1,745
Peru	1,548	1,646	1,592	1,399	1,620	1,620
Saudi Arabia	8,575	7,578	9,968	9,186	9,305	9,305
Syria	2,006	2,079	2,561	2,834	2,900	2,700
Taiwan	4,743	4,403	4,684	4,654	4,725	4,725
Tunisia	1,230	1,519	1,183	900	1,100	1,100
Venezuela	152	534	1,103	1,340	1,300	1,300
Vietnam	475	650	700	1,100	900	900
Others	14,195	13,922	14,380	12,881	12,060	12,160
Subtotal	102,599	110,601	126,638	105,275	105,220	104,330
Unaccounted	3,603	1,389	-1,525	2,364	3,085	4,135
United States	2,295	2,605	3,610	2,807	2,525	2,525
World Total	108,497	114,595	128,723	110,446	110,830	110,990

TY=Trade Year, see Endnotes.

World Coarse Grains Production, Consumption, and Stocks
Local Marketing Years, Thousand Metric Tons

	2005/06	2006/07	2007/08	2008/09	2009/10 Mar	2009/10 Apr
Production						
Argentina	19,348	27,094	27,118	19,134	26,573	26,933
Australia	13,527	6,583	12,895	11,970	11,567	11,567
Brazil	44,167	53,184	61,344	53,624	53,614	56,114
Canada	24,939	23,145	27,841	27,167	22,373	22,373
China	147,696	159,098	159,105	172,660	161,350	161,350
Ethiopia	7,179	7,928	8,302	9,236	8,825	8,825
EU-27	146,267	137,421	136,123	161,579	152,005	152,005
India	34,040	33,810	40,630	39,170	33,540	33,540
Indonesia	6,800	7,850	8,500	8,700	9,000	9,000
Mexico	25,887	29,181	30,577	32,252	29,048	28,448
Nigeria	24,700	26,000	24,000	26,600	27,500	27,500
Russia	27,600	30,200	29,325	40,700	31,800	31,800
South Africa	7,311	7,760	13,690	13,084	14,003	14,503
Turkey	11,955	10,896	9,480	10,415	10,395	10,595
Ukraine	18,140	19,175	14,585	26,220	24,120	24,120
Others	120,858	127,561	125,350	127,839	134,727	134,422
Subtotal	680,414	706,886	728,865	780,350	750,440	753,095
United States	298,710	279,998	349,861	325,867	349,739	349,739
World Total	979,124	986,884	1,078,726	1,106,217	1,100,179	1,102,834
Domestic Consumption						
Argentina	9,471	9,694	9,567	8,748	10,473	10,873
Brazil	42,197	43,304	45,279	47,479	48,279	49,279
Canada	22,859	24,505	24,021	22,850	22,173	22,173
China	147,105	153,465	157,015	160,325	167,225	167,225
Egypt	11,163	11,800	11,477	11,863	11,980	12,780
EU-27	147,538	147,877	154,155	152,105	153,205	153,205
India	33,800	32,520	35,500	36,000	32,200	32,200
Japan	20,089	19,823	19,460	19,710	19,605	19,605
Mexico	37,550	39,920	40,235	42,060	42,450	41,650
Nigeria	24,450	25,750	24,000	26,450	27,550	27,550
Russia	27,700	28,600	28,875	32,650	31,450	31,400
Saudi Arabia	8,235	8,760	9,655	9,655	10,030	10,030
South Africa	8,768	9,153	10,158	10,573	11,003	11,603
Turkey	11,462	11,602	10,609	10,575	10,210	10,110
Ukraine	12,415	13,150	11,835	13,720	13,590	13,590
Others	182,069	185,076	189,703	191,996	194,958	194,918
Subtotal	748,201	769,709	781,914	799,201	808,911	811,946
United States	245,022	242,798	274,533	275,748	296,680	293,813
World Total	993,223	1,012,507	1,056,447	1,074,949	1,105,591	1,105,759
Ending Stocks						
Argentina	2,038	2,529	3,272	1,564	3,447	3,844
Australia	2,806	1,213	2,674	3,327	3,347	3,547
Brazil	3,187	3,772	12,865	13,408	11,583	12,888
Canada	6,347	3,501	4,010	6,355	5,000	5,000
China	36,705	38,032	40,426	54,191	49,481	49,831
EU-27	22,275	15,138	12,768	20,102	18,902	18,902
South Africa	2,443	1,776	3,251	3,882	4,472	4,372
Others	34,488	37,298	37,387	43,091	38,576	38,462
Subtotal	110,289	103,259	116,653	145,920	134,808	136,846
United States	54,767	36,174	45,059	47,060	50,342	53,209
World Total	165,056	139,433	161,712	192,980	185,150	190,055

Regional Coarse Grains Imports, Production, Consumption, and Stocks

Thousand Metric Tons

	2005/06	2006/07	2007/08	2008/09	Mar 2009/10	Apr 2009/10
TY Imports						
North America	14,252	15,930	17,808	15,174	16,995	15,295
Central America	2,803	2,906	2,681	2,505	2,825	2,825
Caribbean	1,969	2,227	2,239	2,073	2,150	2,150
South America	8,791	10,181	10,672	10,018	10,150	10,225
European Union	2,883	8,738	19,892	2,996	2,830	2,830
Former Soviet Union - 12	1,052	949	1,027	551	545	545
Middle East	17,835	18,694	21,879	21,244	19,880	20,105
North Africa	10,481	11,671	10,755	10,759	10,010	10,820
Sub-Saharan Africa	3,540	2,387	2,679	3,306	2,845	2,845
East Asia	35,613	34,135	34,662	33,420	33,740	33,740
Southeast Asia	4,897	4,394	4,746	5,165	4,750	4,450
Others	778	994	1,208	871	1,025	1,025
Total	104,894	113,206	130,248	108,082	107,745	106,855
Production						
North America	349,536	332,324	408,279	385,286	401,160	400,560
South America	73,855	92,197	100,228	84,160	92,240	94,840
European Union	146,267	137,421	136,123	161,579	152,005	152,005
Other Europe	12,659	11,568	9,370	12,362	11,777	11,777
Former Soviet Union - 12	55,561	58,673	54,053	78,464	67,760	67,760
Middle East	20,072	19,656	17,719	16,015	17,197	17,622
North Africa	9,371	11,211	9,894	9,871	14,032	14,032
Sub-Saharan Africa	81,425	87,260	90,587	94,703	97,036	97,536
East Asia	149,899	161,399	161,295	174,834	163,491	163,291
South Asia	40,395	40,139	47,035	45,308	39,848	39,948
Southeast Asia	22,045	23,821	26,191	26,698	27,260	27,090
Oceania	14,174	7,230	13,542	12,617	12,214	12,214
Others	3,865	3,985	4,410	4,320	4,159	4,159
Total	979,124	986,884	1,078,726	1,106,217	1,100,179	1,102,834
Domestic Consumption						
North America	305,431	307,223	338,789	340,658	361,303	357,636
South America	68,213	71,126	74,217	74,997	78,660	80,135
European Union	147,538	147,877	154,155	152,105	153,205	153,205
Other Europe	12,044	11,533	10,456	10,684	10,730	10,730
Former Soviet Union - 12	50,474	51,210	50,502	57,690	56,155	56,105
Middle East	37,303	37,809	38,528	37,978	37,416	37,291
North Africa	20,820	22,029	21,161	20,943	22,805	23,615
Sub-Saharan Africa	84,638	88,391	88,359	94,585	95,697	96,297
East Asia	182,819	188,963	191,868	194,820	201,459	201,259
South Asia	40,068	38,920	42,163	42,196	38,583	38,683
Southeast Asia	26,138	26,817	28,901	29,513	30,660	30,260
Oceania	7,940	6,885	7,666	7,347	7,237	7,637
Others	8,467	9,014	9,312	8,991	9,151	9,151
Total	991,893	1,007,797	1,056,077	1,072,507	1,103,061	1,102,004
Ending Stocks						
North America	64,540	43,201	53,809	58,654	58,662	60,796
South America	8,218	9,487	19,527	17,412	17,562	19,020
European Union	22,275	15,138	12,768	20,102	18,902	18,902
Other Europe	1,491	1,520	1,291	1,809	1,581	1,581
Former Soviet Union - 12	4,986	4,982	4,273	8,543	6,565	6,552
Middle East	7,876	8,501	7,479	7,800	6,769	7,526
North Africa	2,675	3,166	2,419	2,725	3,889	3,962
Sub-Saharan Africa	5,120	5,240	6,536	7,386	8,425	8,350
East Asia	40,586	41,793	44,954	58,167	53,369	53,719
South Asia	1,401	1,455	1,580	1,926	1,758	1,656
Southeast Asia	2,100	2,644	3,300	4,189	3,411	3,534
Oceania	2,885	1,301	2,737	3,387	3,404	3,604
Others	903	1,005	1,039	880	853	853
Total	165,056	139,433	161,712	192,980	185,150	190,055

NOTES: Regional definitions appear on last page of this circular. Imports are reported on a trade year basis. All other data are reported using local marketing years.

World Corn Trade
October/September Year, Thousand Metric Tons

	2005/06	2006/07	2007/08	2008/09	2009/10 Mar	2009/10 Apr
TY Exports						
Argentina	10,707	15,693	15,676	8,458	12,000	12,000
Brazil	2,826	8,071	7,883	7,178	8,000	8,000
Burma	85	125	125	400	100	350
EU-27	449	664	591	1,743	1,500	1,500
India	497	582	5,077	2,551	1,500	1,500
Paraguay	1,314	1,981	1,461	1,862	1,000	1,000
Serbia	nr	854	128	1,467	2,000	2,000
South Africa	1,406	431	1,124	2,111	2,500	2,500
Thailand	121	442	646	786	750	1,000
Ukraine	2,464	1,027	2,074	5,497	5,000	5,000
Others	6,655	7,308	2,717	3,808	2,735	2,595
Subtotal	26,524	37,178	37,502	35,861	37,085	37,445
United States	56,084	54,214	60,663	47,907	48,000	48,000
World Total	82,608	91,392	98,165	83,768	85,085	85,445
TY Imports						
Algeria	2,061	2,463	2,166	1,903	2,100	2,100
Brazil	931	1,204	961	1,092	700	700
Canada	1,962	2,226	3,117	1,844	2,000	2,000
Chile	1,599	1,508	1,628	779	1,200	1,200
Colombia	3,151	3,386	3,267	3,068	3,300	3,300
Cuba	501	646	811	750	800	800
Dominican Republic	1,068	1,212	1,074	973	1,000	1,000
Egypt	4,397	4,826	4,151	5,031	4,200	5,000
EU-27	2,634	7,056	14,016	2,743	2,500	2,500
Guatemala	751	764	617	673	750	750
Iran	2,300	3,300	2,900	3,600	2,900	3,200
Israel	1,128	1,311	1,374	846	1,000	1,000
Japan	16,617	16,713	16,614	16,533	16,300	16,300
Kenya	94	2	202	1,278	1,000	1,000
Korea, South	8,483	8,731	9,311	7,194	7,500	7,500
Malaysia	2,517	2,363	3,181	2,447	2,800	2,500
Mexico	6,787	8,944	9,556	7,764	9,500	8,000
Morocco	1,491	1,683	1,858	1,500	1,600	1,600
Peru	1,467	1,528	1,469	1,307	1,500	1,500
Saudi Arabia	1,472	1,577	1,961	1,482	1,800	1,800
Syria	1,256	1,729	1,661	1,784	1,900	2,000
Taiwan	4,533	4,283	4,527	4,532	4,600	4,600
Tunisia	624	653	805	600	800	800
Venezuela	152	534	1,103	1,336	1,300	1,300
Vietnam	475	650	700	1,100	900	900
Others	11,097	10,767	10,435	9,486	8,595	8,695
Subtotal	79,548	90,059	99,465	81,645	82,545	82,045
Unaccounted	2,850	1,014	-1,801	1,786	2,240	3,100
United States	210	319	501	337	300	300
World Total	82,608	91,392	98,165	83,768	85,085	85,445

TY=Trade Year, see Endnotes.

The large, negative Unaccounted in 2007/08 arises largely from timing differences between declared exports and Japan's and Korea's declared imports.

World Corn Production, Consumption, and Stocks
Local Marketing Years, Thousand Metric Tons

	2005/06	2006/07	2007/08	2008/09	2009/10 Mar	2009/10 Apr
Production						
Argentina	15,800	22,500	22,017	15,000	21,000	21,000
Brazil	41,700	51,000	58,600	51,000	51,000	53,500
Canada	9,332	8,990	11,649	10,592	9,560	9,560
China	139,365	151,600	152,300	165,900	155,000	155,000
Egypt	5,932	6,149	6,174	6,217	6,300	6,300
EU-27	60,668	53,829	47,555	62,721	55,766	55,766
India	14,710	15,100	18,960	19,290	18,000	18,000
Indonesia	6,800	7,850	8,500	8,700	9,000	9,000
Mexico	19,500	22,350	23,600	24,226	22,000	21,300
Nigeria	7,000	7,800	6,500	7,900	8,300	8,300
Philippines	5,884	6,231	7,277	6,846	7,000	7,000
Serbia	nr	6,415	4,054	6,130	6,400	6,400
South Africa	6,935	7,300	13,164	12,567	13,500	14,000
Ukraine	7,150	6,400	7,400	11,400	10,500	10,500
Vietnam	3,818	4,251	4,600	4,530	4,800	4,800
Others	72,219	67,803	68,915	74,634	72,028	71,723
Subtotal	416,813	445,568	461,265	487,653	470,154	472,149
United States	282,263	267,503	331,177	307,142	333,533	333,533
World Total	699,076	713,071	792,442	794,795	803,687	805,682
Total Consumption						
Argentina	6,200	6,700	7,000	6,400	7,100	7,100
Brazil	39,500	41,000	42,500	44,500	45,500	46,500
Canada	10,808	11,442	13,769	11,663	11,800	11,800
China	137,000	145,000	149,000	152,000	159,000	159,000
Egypt	10,100	10,700	10,400	10,800	10,900	11,700
EU-27	61,500	62,300	64,000	62,000	60,000	60,000
India	14,200	13,900	14,200	16,500	16,500	16,500
Indonesia	8,300	8,100	8,500	8,800	9,100	9,100
Japan	16,700	16,500	16,600	16,400	16,300	16,300
Korea, South	8,579	8,833	8,638	7,876	7,700	7,700
Mexico	27,900	30,700	32,000	32,400	32,200	30,800
Nigeria	6,800	7,600	6,550	7,800	8,400	8,400
Philippines	5,800	6,550	7,150	7,300	7,400	7,400
South Africa	8,200	8,600	9,600	10,000	10,400	11,000
Ukraine	5,100	5,250	5,750	5,650	5,650	5,650
Others	107,145	110,520	114,460	115,906	116,949	116,499
Subtotal	474,371	497,354	510,320	518,104	527,597	529,182
United States	232,015	230,674	261,632	259,053	282,334	279,794
World Total	706,386	728,028	771,952	777,157	809,931	808,976
Ending Stocks						
Argentina	1,332	1,836	2,178	803	2,535	2,728
Brazil	3,015	3,592	12,579	13,084	11,279	12,584
China	35,255	36,602	39,394	53,169	48,769	49,119
EU-27	9,461	7,382	4,362	6,083	2,849	2,849
Iran	1,547	2,363	1,703	1,753	1,103	1,603
Mexico	2,707	3,084	4,131	3,559	2,709	1,909
South Africa	2,308	1,661	3,090	3,682	4,307	4,207
Others	18,734	19,736	21,168	22,861	20,908	20,970
Subtotal	74,359	76,256	88,605	104,994	94,459	95,969
United States	49,968	33,114	41,255	42,504	45,695	48,235
World Total	124,327	109,370	129,860	147,498	140,154	144,204

Regional Corn Imports, Production, Consumption, and Stocks

Thousand Metric Tons

	2005/06	2006/07	2007/08	2008/09	Mar 2009/10	Apr 2009/10
TY Imports						
North America	8,959	11,489	13,174	9,945	11,800	10,300
Central America	2,803	2,906	2,678	2,505	2,825	2,825
South America	8,158	9,141	9,459	8,488	8,765	8,715
European Union	2,634	7,056	14,016	2,743	2,500	2,500
Former Soviet Union - 12	649	501	648	307	385	385
Middle East	7,381	10,245	10,116	9,439	8,875	9,425
North Africa	9,044	10,136	9,594	9,634	9,350	10,150
Sub-Saharan Africa	2,855	1,806	1,844	2,555	2,080	2,080
East Asia	29,949	29,854	30,746	28,556	28,750	28,750
Southeast Asia	4,890	4,385	4,715	5,151	4,725	4,425
Caribbean	1,969	2,227	2,239	2,073	2,150	2,150
Others	467	632	737	586	640	640
Total	79,758	90,378	99,966	81,982	82,845	82,345
Production						
North America	311,095	298,843	366,426	341,960	365,093	364,393
South America	65,826	83,335	90,374	75,154	81,735	84,125
European Union	60,668	53,829	47,555	62,721	55,766	55,766
Other Europe	10,333	9,350	7,239	9,965	9,685	9,685
Former Soviet Union - 12	13,581	12,871	13,893	21,672	17,755	17,755
Middle East	6,439	5,733	5,281	6,313	6,219	6,294
North Africa	6,134	6,351	6,376	6,419	6,502	6,502
Sub-Saharan Africa	38,264	41,527	46,771	47,772	49,990	50,490
East Asia	141,106	153,453	154,009	167,571	156,665	156,465
South Asia	19,920	20,234	24,090	24,340	23,020	23,120
Central America	2,757	2,885	3,244	3,243	3,053	3,053
Southeast Asia	21,745	23,605	25,968	26,468	27,025	26,855
Others	1,208	1,055	1,216	1,197	1,179	1,179
Total	699,076	713,071	792,442	794,795	803,687	805,682
Domestic Consumption						
North America	270,723	272,816	307,401	303,116	326,334	322,394
South America	59,799	63,172	65,962	66,205	69,105	70,205
European Union	61,500	62,300	64,000	62,000	60,000	60,000
Other Europe	9,426	8,995	7,817	8,102	8,255	8,255
Former Soviet Union - 12	12,308	12,144	12,998	14,530	13,265	13,215
Middle East	13,575	14,773	15,974	15,378	15,553	15,553
North Africa	14,871	16,061	15,764	16,000	16,200	17,000
Sub-Saharan Africa	41,149	42,693	43,761	47,071	47,896	48,496
East Asia	168,788	176,719	180,503	182,716	189,450	189,250
South Asia	19,320	19,101	19,585	21,575	21,545	21,645
Southeast Asia	25,837	26,597	28,674	29,275	30,425	30,025
Central America	5,350	5,800	5,900	5,800	5,950	5,950
Others	3,201	3,198	3,410	3,280	3,255	3,255
Total	705,847	724,369	771,749	775,048	807,233	805,243
Ending Stocks						
North America	54,676	37,535	46,843	47,920	49,721	51,461
South America	7,164	8,432	17,964	16,115	16,170	17,425
European Union	9,461	7,382	4,362	6,083	2,849	2,849
Other Europe	1,167	1,156	976	1,450	1,275	1,275
Former Soviet Union - 12	1,610	1,727	1,107	1,701	1,264	1,251
Middle East	2,652	3,611	3,048	3,304	2,363	3,060
North Africa	1,303	1,567	1,556	1,972	1,551	1,624
Sub-Saharan Africa	4,011	3,625	5,142	5,931	7,155	7,080
East Asia	38,328	39,745	43,373	56,612	52,077	52,427
South Asia	946	919	1,116	1,301	1,416	1,316
Southeast Asia	2,085	2,642	3,300	4,188	3,410	3,533
Central America	740	729	769	652	570	570
Others	184	300	304	269	333	333
Total	124,327	109,370	129,860	147,498	140,154	144,204

NOTES: Regional definitions appear on last page of this circular. Imports are reported on a trade year basis. All other data are reported using local marketing years.

World Barley Trade
October/September Year, Thousand Metric Tons

	2005/06	2006/07	2007/08	2008/09	2009/10 Mar	2009/10 Apr
TY Exports						
Argentina	309	537	937	871	600	600
Australia	5,231	1,927	3,377	3,278	3,800	3,400
Canada	1,876	1,337	2,947	1,618	1,500	1,500
China	3	49	81	17	20	20
Egypt	0	1	67	6	5	5
EU-27	2,587	4,366	3,888	2,374	1,500	1,500
India	0	131	371	37	100	100
Kazakhstan	239	606	806	314	500	500
Russia	1,397	1,691	1,277	3,598	2,200	2,200
Serbia	nr	9	4	11	5	5
Turkey	546	345	0	3	600	800
Ukraine	4,926	2,911	3,814	5,871	6,000	6,000
Uruguay	41	112	26	0	50	50
Others	5	55	81	5	0	0
Subtotal	17,160	14,077	17,676	18,003	16,880	16,680
United States	357	528	901	158	100	100
World Total	17,517	14,605	18,577	18,161	16,980	16,780
TY Imports						
Brazil	164	267	285	400	250	250
China	2,217	1,127	1,091	1,551	1,600	1,600
Colombia	198	243	256	225	250	250
EU-27	168	167	519	175	150	150
Iran	700	300	1,000	1,400	800	800
Israel	314	224	251	375	325	325
Japan	1,417	1,359	1,361	1,346	1,400	1,400
Jordan	811	804	528	525	500	500
Kuwait	203	217	254	255	200	200
Libya	248	58	166	300	200	200
Saudi Arabia	7,100	6,000	8,000	7,700	7,500	7,500
Syria	750	350	900	1,050	1,000	700
Tunisia	606	866	378	300	300	300
Turkey	52	57	246	159	150	150
United Arab Emirates	326	294	252	125	250	250
Others	1,594	1,770	2,005	1,622	1,210	1,210
Subtotal	16,868	14,103	17,492	17,508	16,085	15,785
Unaccounted	525	148	373	81	395	495
United States	124	354	712	572	500	500
World Total	17,517	14,605	18,577	18,161	16,980	16,780

TY=Trade Year, see Endnotes.

World Barley Production, Consumption, and Stocks
Local Marketing Years, Thousand Metric Tons

	2005/06	2006/07	2007/08	2008/09	2009/10 Mar	2009/10 Apr
Production						
Algeria	400	700	950	560	2,000	2,000
Argentina	799	1,330	1,600	2,110	1,200	1,200
Australia	9,483	4,257	7,160	7,669	8,300	8,300
Belarus	1,800	1,350	1,700	2,200	1,650	1,650
Canada	11,678	9,573	10,984	11,781	9,520	9,520
China	3,400	3,115	2,785	2,823	2,500	2,500
Ethiopia	1,271	1,352	1,355	1,484	1,300	1,300
EU-27	54,752	56,220	57,545	65,459	61,962	61,962
India	1,200	1,220	1,330	1,230	1,540	1,540
Iran	2,857	2,956	3,000	2,000	2,600	2,600
Kazakhstan	1,500	1,900	2,500	1,800	2,600	2,600
Morocco	1,102	2,535	763	1,272	3,800	3,800
Russia	15,800	18,100	15,650	23,100	17,900	17,900
Turkey	7,600	7,500	6,000	5,700	6,000	6,000
Ukraine	9,000	11,350	6,000	12,600	11,800	11,800
Others	8,977	9,005	8,990	7,964	8,058	8,408
Subtotal	131,619	132,463	128,312	149,752	142,730	143,080
United States	4,613	3,923	4,575	5,230	4,949	4,949
World Total	136,232	136,386	132,887	154,982	147,679	148,029
Total Consumption						
Australia	3,500	4,000	3,100	3,600	4,100	4,500
Belarus	1,950	1,600	1,750	2,200	1,700	1,700
Canada	9,611	10,190	7,916	9,065	8,450	8,450
China	5,400	4,200	3,900	4,200	4,150	4,150
EU-27	54,050	55,700	54,200	57,500	59,000	59,000
India	1,200	1,220	1,000	1,000	1,400	1,400
Iran	4,200	3,400	3,600	3,900	3,300	3,300
Japan	1,650	1,650	1,600	1,600	1,550	1,550
Kazakhstan	1,400	1,350	1,700	1,600	1,800	1,800
Morocco	2,525	2,500	1,800	1,575	2,900	2,900
Russia	15,500	16,400	15,050	17,100	17,100	17,100
Saudi Arabia	6,510	6,810	7,430	7,730	7,930	7,930
Syria	1,550	1,150	1,000	1,800	1,600	1,600
Turkey	7,300	7,300	6,100	5,700	5,600	5,500
Ukraine	5,300	6,300	4,900	6,000	6,100	6,100
Others	14,219	14,553	14,796	14,458	14,135	14,435
Subtotal	136,588	138,686	129,564	139,250	140,280	140,980
United States	4,570	4,596	4,324	5,127	4,789	4,680
World Total	141,158	143,282	133,888	144,377	145,069	145,660
Ending Stocks						
Algeria	554	462	333	234	884	884
Australia	2,582	988	1,662	2,497	2,897	2,897
Canada	3,289	1,491	1,568	2,843	2,463	2,463
EU-27	8,535	5,824	5,705	10,366	12,478	12,478
Morocco	481	903	214	239	1,239	1,239
Russia	873	1,272	1,025	3,637	2,287	2,287
Saudi Arabia	2,568	2,458	2,428	2,298	2,368	2,368
Others	6,616	6,054	5,531	6,510	5,631	5,782
Subtotal	25,498	19,452	18,466	28,624	30,247	30,398
United States	2,350	1,500	1,485	1,932	2,418	2,527
World Total	27,848	20,952	19,951	30,556	32,665	32,925

Regional Barley Imports, Production, Consumption, and Stocks

Thousand Metric Tons

	2005/06	2006/07	2007/08	2008/09	Mar 2009/10	Apr 2009/10
TY Imports						
North America	201	476	933	739	650	650
South America	517	723	751	830	700	700
European Union	168	167	519	175	150	150
Other Europe	156	220	207	148	180	180
Former Soviet Union - 12	332	426	374	244	160	160
Middle East	10,303	8,278	11,572	11,699	10,885	10,585
North Africa	1,392	1,521	1,144	1,075	625	625
Sub-Saharan Africa	81	51	154	129	85	85
East Asia	3,816	2,595	2,550	2,996	3,100	3,100
South Asia	21	0	0	45	50	50
Oceania	5	0	0	0	0	0
Total	16,992	14,457	18,204	18,080	16,585	16,285
Production						
North America	17,051	14,365	16,212	17,822	14,969	14,969
South America	1,826	2,352	2,726	3,154	2,294	2,294
European Union	54,752	56,220	57,545	65,459	61,962	61,962
Other Europe	1,611	1,548	1,412	1,618	1,417	1,417
Former Soviet Union - 12	29,412	33,901	27,105	41,227	35,490	35,490
Middle East	12,335	12,479	10,926	8,443	9,630	9,980
North Africa	2,212	3,835	2,493	2,427	6,445	6,445
Sub-Saharan Africa	1,638	1,738	1,733	1,826	1,675	1,675
East Asia	3,848	3,549	3,240	3,300	2,950	2,950
South Asia	1,664	1,742	1,935	1,637	2,147	2,147
Oceania	9,883	4,657	7,560	8,069	8,700	8,700
Total	136,232	136,386	132,887	154,982	147,679	148,029
Domestic Consumption						
North America	15,056	15,661	13,040	15,042	14,039	13,930
South America	2,120	2,402	2,598	2,764	2,378	2,678
European Union	54,050	55,700	54,200	57,500	59,000	59,000
Other Europe	1,776	1,738	1,640	1,730	1,640	1,640
Former Soviet Union - 12	25,538	26,895	24,737	28,500	28,265	28,265
Middle East	22,265	21,439	20,841	21,222	20,410	20,310
North Africa	4,880	4,930	4,352	3,863	5,480	5,480
Sub-Saharan Africa	1,691	1,792	1,794	1,939	1,775	1,775
East Asia	7,492	6,219	5,858	6,159	6,060	6,060
South Asia	1,667	1,743	1,606	1,436	2,057	2,057
Oceania	3,900	4,400	3,500	4,000	4,500	4,900
Total	140,435	142,919	134,166	144,155	145,604	146,095
Ending Stocks						
North America	5,796	3,208	3,281	5,112	5,018	5,127
South America	507	498	393	614	189	280
European Union	8,535	5,824	5,705	10,366	12,478	12,478
Other Europe	283	319	277	310	262	262
Former Soviet Union - 12	2,443	2,648	2,507	5,361	4,050	4,050
Middle East	5,196	4,858	4,409	4,487	4,382	4,442
North Africa	1,332	1,559	821	723	2,308	2,308
Sub-Saharan Africa	65	62	97	104	89	89
East Asia	1,005	881	732	852	822	822
South Asia	49	49	31	94	134	134
Oceania	2,637	1,046	1,698	2,533	2,933	2,933
Total	27,848	20,952	19,951	30,556	32,665	32,925

NOTES: Regional definitions appear on last page of this circular. Imports are reported on a trade year basis. All other data are reported using local marketing years.

World Sorghum Trade
October/September Year, Thousand Metric Tons

	2005/06	2006/07	2007/08	2008/09	2009/10 Mar	2009/10 Apr
TY Exports						
Argentina	226	959	1,172	907	1,000	1,200
Australia	190	25	340	1,360	1,100	900
Brazil	0	115	116	0	100	100
China	26	144	223	32	50	50
Nigeria	50	50	50	50	50	50
South Africa	23	31	21	48	40	40
Sudan	2	50	100	5	100	100
Others	18	30	153	94	70	70
Subtotal	535	1,404	2,175	2,496	2,510	2,510
United States	4,961	4,380	6,664	3,609	3,800	3,800
World Total	5,496	5,784	8,839	6,105	6,310	6,310
TY Imports						
Chile	46	189	268	404	375	500
Colombia	5	67	66	202	200	200
Ecuador	0	0	44	8	50	50
Ethiopia	0	0	30	140	100	100
EU-27	77	1,474	5,267	66	150	150
Israel	44	78	144	71	75	50
Japan	1,393	1,276	1,084	1,629	1,600	1,600
Mexico	3,029	1,954	1,156	2,496	2,700	2,500
Sudan	211	300	300	300	300	300
Taiwan	69	64	83	72	75	75
Others	472	267	617	299	400	410
Subtotal	5,346	5,669	9,059	5,687	6,025	5,935
Unaccounted	150	113	-221	415	285	375
United States	0	2	1	3	0	0
World Total	5,496	5,784	8,839	6,105	6,310	6,310

TY=Trade Year, see Endnotes.

World Sorghum Production, Consumption, and Stocks
Local Marketing Years, Thousand Metric Tons

	2005/06	2006/07	2007/08	2008/09	2009/10 Mar	2009/10 Apr
Production						
Argentina	2,328	2,795	2,937	1,660	3,800	4,160
Australia	1,929	1,283	3,790	2,671	1,600	1,600
Brazil	1,543	1,500	2,000	1,910	1,900	1,900
Burkina	1,553	1,516	1,507	1,800	1,800	1,800
China	2,546	2,183	1,920	1,837	1,650	1,650
Egypt	900	900	900	900	900	900
Ethiopia	2,174	2,316	2,659	2,619	2,600	2,600
EU-27	489	542	525	515	623	623
India	7,630	7,150	7,930	7,310	6,400	6,400
Mali	629	770	901	900	925	925
Mexico	5,500	5,810	6,200	7,067	6,400	6,500
Niger	750	800	930	1,000	900	900
Nigeria	10,500	10,500	10,000	11,000	11,500	11,500
Sudan	4,275	5,200	4,500	4,700	4,700	4,700
Tanzania	890	850	900	900	900	900
Others	6,042	6,404	6,195	6,497	6,613	6,463
Subtotal	49,678	50,519	53,794	53,286	53,211	53,521
United States	9,976	7,032	12,636	11,998	9,728	9,728
World Total	59,654	57,551	66,430	65,284	62,939	63,249
Total Consumption						
Argentina	2,300	1,700	1,200	1,100	2,200	2,300
Australia	1,895	1,205	2,205	1,605	1,005	1,005
Brazil	1,575	1,375	1,800	1,900	1,800	1,800
Burkina	1,553	1,516	1,507	1,800	1,800	1,800
China	2,300	2,050	2,000	2,000	1,850	1,850
Egypt	900	900	900	950	900	900
Ethiopia	2,100	2,300	2,600	2,700	2,800	2,800
India	7,500	7,100	7,900	7,200	6,500	6,500
Japan	1,400	1,350	1,100	1,600	1,600	1,600
Mali	629	770	901	900	925	925
Mexico	8,600	8,100	7,200	8,600	9,200	9,800
Niger	750	825	1,025	1,050	950	950
Nigeria	10,450	10,450	9,950	10,950	11,450	11,450
Sudan	4,250	5,000	5,000	5,000	5,000	5,000
Tanzania	890	850	900	895	900	900
Others	7,367	8,232	13,632	8,433	8,321	8,281
Subtotal	54,502	54,347	59,871	56,715	57,446	58,196
United States	4,818	4,012	5,081	8,308	6,096	6,096
World Total	59,320	58,359	64,952	65,023	63,542	64,292
Ending Stocks						
Argentina	217	231	746	207	756	867
Australia	23	16	791	657	252	452
Brazil	113	124	220	232	232	232
China	935	928	637	456	221	221
Mexico	553	217	373	1,336	469	536
Nigeria	200	200	200	200	200	200
Sudan	547	997	697	692	592	592
Others	978	899	900	995	813	810
Subtotal	3,566	3,612	4,564	4,775	3,535	3,910
United States	1,668	814	1,340	1,390	1,212	1,212
World Total	5,234	4,426	5,904	6,165	4,747	5,122

Regional Sorghum Imports, Production, Consumption, and Stocks

Thousand Metric Tons

	2005/06	2006/07	2007/08	2008/09	Mar 2009/10	Apr 2009/10
TY Imports						
North America	3,029	1,956	1,157	2,499	2,700	2,500
South America	76	284	432	665	655	780
European Union	77	1,474	5,267	66	150	150
Other Europe	0	0	142	0	25	25
Middle East	47	79	156	81	80	55
North Africa	39	0	11	45	30	40
Sub-Saharan Africa	586	517	663	597	655	655
East Asia	1,485	1,349	1,196	1,719	1,705	1,705
Southeast Asia	7	9	31	14	25	25
Others	0	3	5	4	0	0
Total	5,346	5,671	9,060	5,690	6,025	5,935
Production						
North America	15,476	12,842	18,836	19,065	16,128	16,228
Central America	324	329	381	292	321	321
Caribbean	128	128	128	128	128	128
South America	4,792	5,117	5,661	4,625	6,756	6,966
European Union	489	542	525	515	623	623
Middle East	568	758	836	612	665	665
North Africa	915	915	915	915	915	915
Sub-Saharan Africa	24,601	26,088	25,280	27,089	27,528	27,528
East Asia	2,554	2,191	1,940	1,857	1,670	1,670
South Asia	7,783	7,305	8,081	7,455	6,545	6,545
Southeast Asia	95	53	57	60	60	60
Oceania	1,929	1,283	3,790	2,671	1,600	1,600
Others	0	0	0	0	0	0
Total	59,654	57,551	66,430	65,284	62,939	63,249
Domestic Consumption						
North America	13,418	12,112	12,281	16,908	15,296	15,896
Central America	333	328	369	308	318	318
Caribbean	128	128	128	128	128	128
South America	4,866	4,159	4,219	4,816	5,717	5,792
European Union	680	1,280	6,305	905	705	705
Middle East	624	834	1,001	706	730	705
North Africa	954	915	924	965	950	960
Sub-Saharan Africa	24,846	25,984	25,991	27,534	28,158	28,158
East Asia	3,784	3,475	3,222	3,699	3,560	3,560
South Asia	7,653	7,258	8,053	7,349	6,645	6,645
Southeast Asia	96	57	61	68	60	60
Oceania	1,895	1,205	2,205	1,605	1,005	1,005
Others	0	0	142	0	25	25
Total	59,277	57,735	64,901	64,991	63,297	63,957
Ending Stocks						
North America	2,221	1,031	1,713	2,726	1,681	1,748
Central America	17	18	31	14	17	17
South America	434	444	1,042	547	1,076	1,186
European Union	100	14	71	32	45	45
Middle East	28	32	22	9	24	24
North Africa	39	39	41	29	29	29
Sub-Saharan Africa	1,030	1,541	1,277	1,331	1,161	1,161
East Asia	1,121	1,042	733	578	343	343
South Asia	206	247	183	241	118	116
Oceania	23	16	791	657	252	452
Others	15	2	0	1	1	1
Total	5,234	4,426	5,904	6,165	4,747	5,122

NOTES: Regional definitions appear on last page of this circular. Imports are reported on a trade year basis. All other data are reported using local marketing years.

World Oats Trade
October/September Year, Thousand Metric Tons

	2005/06	2006/07	2007/08	2008/09	2009/10 Mar	2009/10 Apr
TY Exports						
Argentina	1	2	1	5	5	5
Australia	191	41	174	161	150	150
Brazil	0	2	4	9	5	5
Canada	1,754	1,921	2,321	1,789	1,700	1,700
Chile	27	41	17	31	25	25
EU-27	234	119	133	103	150	150
Kazakhstan	5	9	10	5	5	5
Others	2	10	31	6	5	5
Subtotal	2,214	2,145	2,691	2,109	2,045	2,045
United States	40	33	53	38	40	40
World Total	2,254	2,178	2,744	2,147	2,085	2,085
TY Imports						
Bosnia and Herzegovina	7	4	3	2	5	5
Canada	21	18	17	14	15	15
China	18	9	13	39	20	20
Colombia	26	18	14	25	25	25
Ecuador	13	14	15	5	5	5
EU-27	2	5	2	4	5	5
Japan	59	62	68	46	60	60
Mexico	81	61	131	82	100	100
Morocco	1	5	5	5	5	5
Norway	51	59	47	10	50	50
South Africa	18	13	18	25	25	25
Switzerland	56	51	56	52	50	50
Turkey	0	3	12	5	5	5
Others	7	19	11	5	0	0
Subtotal	360	341	412	319	370	370
Unaccounted	63	43	88	41	115	115
United States	1,831	1,794	2,244	1,787	1,600	1,600
World Total	2,254	2,178	2,744	2,147	2,085	2,085

TY=Trade Year, see Endnotes.

World Oats Production, Consumption, and Stocks
Local Marketing Years, Thousand Metric Tons

	2005/06	2006/07	2007/08	2008/09	2009/10 Mar	2009/10 Apr
Production						
Algeria	80	80	80	80	140	140
Argentina	350	400	472	291	500	500
Australia	1,690	748	1,502	1,205	1,260	1,260
Belarus	600	550	600	600	800	800
Brazil	517	475	475	475	475	475
Canada	3,283	3,852	4,696	4,273	2,800	2,800
Chile	420	380	384	344	345	345
China	600	600	600	600	600	600
EU-27	7,968	7,768	8,634	8,865	8,607	8,607
Kazakhstan	140	140	160	160	160	160
Mexico	127	152	124	148	148	148
Norway	279	248	276	328	245	245
Russia	4,550	4,900	5,400	5,800	5,400	5,400
Turkey	270	210	200	200	210	210
Ukraine	800	700	550	950	730	730
Others	466	483	457	457	475	475
Subtotal	22,140	21,686	24,610	24,776	22,895	22,895
United States	1,667	1,357	1,313	1,294	1,351	1,351
World Total	23,807	23,043	25,923	26,070	24,246	24,246
Total Consumption						
Algeria	84	88	86	80	140	140
Argentina	350	400	450	300	500	500
Australia	1,480	710	1,335	1,085	1,100	1,100
Belarus	625	550	575	600	800	800
Brazil	515	475	475	450	475	475
Canada	1,966	2,283	1,933	1,770	1,550	1,550
Chile	400	350	350	315	320	320
China	620	615	615	625	625	625
EU-27	7,868	7,647	8,650	8,500	8,400	8,400
Kazakhstan	135	135	150	155	150	150
Mexico	175	245	235	210	250	250
Norway	334	303	336	328	300	300
Russia	4,600	4,900	5,400	5,400	5,600	5,600
Turkey	270	211	213	205	215	215
Ukraine	825	675	550	900	750	750
Others	649	651	630	615	648	648
Subtotal	20,935	20,158	22,307	21,563	21,902	21,902
United States	3,287	3,179	3,161	2,968	3,161	2,943
World Total	24,222	23,337	25,468	24,531	25,063	24,845
Ending Stocks						
Argentina	79	78	100	89	82	84
Australia	187	197	183	142	152	152
Belarus	50	50	75	75	75	75
Canada	872	556	950	1,527	1,092	1,092
China	107	101	99	113	108	108
EU-27	769	795	625	902	964	964
Russia	190	186	184	584	384	384
Others	164	190	157	228	201	201
Subtotal	2,418	2,153	2,373	3,660	3,058	3,060
United States	763	734	969	1,221	1,004	1,222
World Total	3,181	2,887	3,342	4,881	4,062	4,282

Regional Oats Imports, Production, Consumption, and Stocks

Thousand Metric Tons

	2005/06	2006/07	2007/08	2008/09	Mar 2009/10	Apr 2009/10
TY Imports						
North America	1,933	1,873	2,392	1,883	1,715	1,715
South America	40	33	30	35	30	30
European Union	2	5	2	4	5	5
Other Europe	114	114	108	64	105	105
Former Soviet Union - 12	0	6	5	0	0	0
Middle East	0	3	12	5	5	5
North Africa	6	14	6	5	5	5
Sub-Saharan Africa	18	13	18	25	25	25
East Asia	77	71	81	85	80	80
Oceania	1	3	2	0	0	0
Total	2,191	2,135	2,656	2,106	1,970	1,970
Production						
North America	5,077	5,361	6,133	5,715	4,299	4,299
South America	1,316	1,303	1,354	1,133	1,361	1,361
European Union	7,968	7,768	8,634	8,865	8,607	8,607
Other Europe	556	525	553	605	522	522
Former Soviet Union - 12	6,098	6,296	6,715	7,515	7,095	7,095
Middle East	270	210	200	200	210	210
North Africa	110	110	110	110	170	170
Sub-Saharan Africa	45	45	45	45	45	45
East Asia	602	602	602	602	602	602
Oceania	1,765	823	1,577	1,280	1,335	1,335
Total	23,807	23,043	25,923	26,070	24,246	24,246
Domestic Consumption						
North America	5,428	5,707	5,329	4,948	4,961	4,743
South America	1,333	1,303	1,325	1,118	1,366	1,366
European Union	7,868	7,647	8,650	8,500	8,400	8,400
Other Europe	666	635	676	655	632	632
Former Soviet Union - 12	6,193	6,266	6,680	7,060	7,305	7,305
Middle East	270	211	213	205	215	215
North Africa	115	123	121	115	175	175
Sub-Saharan Africa	75	60	55	70	70	70
East Asia	680	680	685	675	685	685
Oceania	1,555	785	1,410	1,160	1,175	1,175
Total	24,183	23,417	25,144	24,506	24,984	24,766
Ending Stocks						
North America	1,644	1,298	1,927	2,755	2,101	2,319
South America	113	113	128	136	127	129
European Union	769	795	625	902	964	964
Other Europe	40	45	38	49	44	44
Former Soviet Union - 12	301	321	317	761	541	541
Middle East	0	0	0	0	0	0
North Africa	1	1	1	1	1	1
Sub-Saharan Africa	14	12	20	20	20	20
East Asia	112	105	103	115	112	112
Oceania	187	197	183	142	152	152
Total	3,181	2,887	3,342	4,881	4,062	4,282

NOTES: Regional definitions appear on last page of this circular. Imports are reported on a trade year basis. All other data are reported using local marketing years.

World Rye Trade
October/September Year, Thousand Metric Tons

	2005/06	2006/07	2007/08	2008/09	2009/10 Mar	2009/10 Apr
TY Exports						
Belarus	50	50	75	50	50	50
Canada	141	207	167	75	125	125
EU-27	381	313	59	114	125	125
Russia	0	64	86	14	50	50
Ukraine	49	0	0	6	10	10
Others	0	0	3	0	0	0
Subtotal	621	634	390	259	360	360
United States	1	2	8	6	10	10
World Total	622	636	398	265	370	370
TY Imports						
Canada	0	0	0	0	5	5
EU-27	2	36	88	8	25	25
Israel	102	71	7	15	25	25
Japan	279	258	83	57	100	100
Korea, South	7	8	6	7	5	5
Norway	4	16	4	20	20	20
Switzerland	9	4	4	4	5	5
Turkey	2	18	16	5	10	10
Others	72	18	2	0	0	0
Subtotal	477	429	210	116	195	195
Unaccounted	15	71	36	41	50	50
United States	130	136	152	108	125	125
World Total	622	636	398	265	370	370

TY=Trade Year, see Endnotes.

World Rye Production, Consumption, and Stocks
Local Marketing Years, Thousand Metric Tons

	2005/06	2006/07	2007/08	2008/09	2009/10 Mar	2009/10 Apr
Production						
Argentina	55	55	77	55	55	55
Belarus	1,150	1,200	1,300	1,500	1,700	1,700
Canada	330	383	252	316	280	280
EU-27	7,688	6,541	7,679	9,234	9,253	9,253
Russia	3,600	3,000	3,900	4,500	4,300	4,300
Turkey	270	271	265	250	270	270
Ukraine	1,050	600	550	1,050	950	950
Others	186	169	190	198	177	177
Subtotal	14,329	12,219	14,213	17,103	16,985	16,985
United States	191	183	160	203	178	178
World Total	14,520	12,402	14,373	17,306	17,163	17,163
Total Consumption						
Argentina	55	55	77	55	55	55
Belarus	1,100	1,200	1,200	1,400	1,600	1,600
Canada	158	243	143	147	160	160
EU-27	8,620	7,400	7,300	8,700	9,400	9,400
Japan	279	258	90	60	95	95
Kazakhstan	50	50	47	50	50	50
Norway	39	42	47	68	47	47
Russia	3,600	3,100	3,750	4,250	4,300	4,300
Turkey	277	276	281	255	280	280
Ukraine	1,050	800	550	950	950	950
Others	238	176	121	125	135	135
Subtotal	15,452	13,744	13,676	16,114	17,115	17,115
United States	332	337	335	292	300	300
World Total	15,784	14,081	14,011	16,406	17,415	17,415
Ending Stocks						
Belarus	239	189	214	264	314	314
Canada	185	117	35	128	128	128
EU-27	1,874	616	1,013	1,442	1,195	1,195
Japan	20	20	13	10	15	15
Russia	126	32	63	297	247	247
Ukraine	267	65	65	159	149	149
Others	1	0	0	0	0	0
Subtotal	2,712	1,039	1,403	2,300	2,048	2,048
United States	18	12	10	13	13	13
World Total	2,730	1,051	1,413	2,313	2,061	2,061

Regional Rye Imports, Production, Consumption, and Stocks

Thousand Metric Tons

	2005/06	2006/07	2007/08	2008/09	Mar 2009/10	Apr 2009/10
TY Imports						
North America	130	136	152	108	130	130
South America	0	0	0	0	0	0
European Union	2	36	88	8	25	25
Other Europe	14	22	10	24	25	25
Former Soviet Union - 12	71	16	0	0	0	0
Middle East	104	89	23	20	35	35
Sub-Saharan Africa	0	0	0	0	0	0
East Asia	286	266	89	64	105	105
Oceania	0	0	0	0	0	0
Total	607	565	362	224	320	320
Production						
North America	521	566	412	519	458	458
South America	64	61	83	61	61	61
European Union	7,688	6,541	7,679	9,234	9,253	9,253
Other Europe	104	90	111	119	98	98
Former Soviet Union - 12	5,850	4,850	5,800	7,100	7,000	7,000
Middle East	270	271	265	250	270	270
Sub-Saharan Africa	3	3	3	3	3	3
East Asia	0	0	0	0	0	0
Oceania	20	20	20	20	20	20
Total	14,520	12,402	14,373	17,306	17,163	17,163
Domestic Consumption						
North America	490	580	478	439	460	460
South America	64	61	83	61	61	61
European Union	8,620	7,400	7,300	8,700	9,400	9,400
Other Europe	121	110	126	142	123	123
Former Soviet Union - 12	5,815	5,150	5,547	6,650	6,900	6,900
Middle East	379	347	288	270	305	305
Sub-Saharan Africa	3	3	3	3	3	3
East Asia	286	266	96	67	100	100
Oceania	20	20	20	20	20	20
Total	15,798	13,937	13,941	16,352	17,372	17,372
Ending Stocks						
North America	203	129	45	141	141	141
South America	0	0	0	0	0	0
European Union	1,874	616	1,013	1,442	1,195	1,195
Other Europe	1	0	0	0	0	0
Former Soviet Union - 12	632	286	342	720	710	710
Middle East	0	0	0	0	0	0
Sub-Saharan Africa	0	0	0	0	0	0
East Asia	20	20	13	10	15	15
Oceania	0	0	0	0	0	0
Total	2,730	1,051	1,413	2,313	2,061	2,061

NOTES: Regional definitions appear on last page of this circular. Imports are reported on a trade year basis. All other data are reported using local marketing years.



HISTORICAL DATA SERIES FOR SELECTED REGIONS AND COUNTRIES

CONTENTS

European Union: Grain Supply and Demand	34
China: Grain Supply and Demand	35
Other Europe: Grain Supply and Demand	36
Former Soviet Union: Grain Supply and Demand.....	37
Wheat Supply and Disappearance: Selected Exporters	41
Corn Supply and Disappearance: Selected Exporters.....	43
Barley Supply and Disappearance: Selected Exporters	45
Sorghum Supply and Disappearance: Selected Exporters	46
U.S. Grains: Supply and Distribution	47
Total Wheat and Coarse Grains: Supply and Demand	48
World Wheat and Coarse Grains: Supply and Demand	49
World Corn and Barley: Supply and Demand	50
World Rice: Supply and Demand	51

European Union: Grain Supply and Demand

Wheat and Coarse Grains Millions of Metric Tons/Hectares

	Area Harvested	Yield	Production	Imports	Exports	Feed Dom. Consumpti	Domestic Consumpti	Ending Stocks
Wheat								
1999/00	24.6	5.0	122.4	4.0	20.4	52.8	113.2	16.3
2000/01	26.5	5.0	131.7	3.5	15.7	56.3	118.4	17.5
2001/02	25.9	4.8	123.4	8.7	12.8	56.5	118.5	18.3
2002/03	26.4	5.0	132.6	10.7	18.1	60.0	125.0	18.5
2003/04	24.3	4.5	110.6	7.4	9.8	52.4	115.1	11.5
2004/05	26.0	5.7	146.9	7.1	14.7	59.2	123.2	27.5
2005/06	25.8	5.1	132.4	6.8	15.7	63.0	127.5	23.4
2006/07	24.5	5.1	124.9	5.1	13.8	60.2	125.5	14.1
2007/08	24.7	4.9	120.1	6.9	12.3	52.4	116.5	12.3
2008/09	26.7	5.7	151.1	7.7	25.3	61.0	127.5	18.3
2009/10	25.4	5.4	138.1	6.0	20.0	58.0	125.5	17.0
Coarse Grains								
1999/00	33.6	4.4	147.9	2.9	13.4	105.8	140.1	22.9
2000/01	33.0	4.2	139.9	4.1	9.3	105.1	139.3	18.3
2001/02	33.6	4.5	150.2	3.9	6.7	107.8	143.6	22.3
2002/03	32.7	4.5	148.3	4.4	7.6	109.3	144.9	22.5
2003/04	32.7	4.0	131.7	8.2	4.2	109.6	145.2	13.0
2004/05	33.5	5.0	166.6	3.0	4.9	116.5	152.6	25.1
2005/06	32.6	4.5	146.3	2.8	4.4	109.4	147.5	22.3
2006/07	31.8	4.3	137.4	8.0	4.7	110.3	147.9	15.1
2007/08	32.0	4.2	136.1	20.3	4.6	118.9	154.2	12.8
2008/09	33.5	4.8	161.6	3.4	5.6	113.9	152.1	20.1
2009/10	32.3	4.7	152.0	2.8	2.8	114.1	153.2	18.9
Wheat and Coarse Grains								
1999/00	58.2	4.6	270.4	6.8	33.8	158.6	253.4	39.2
2000/01	59.5	4.6	271.6	7.6	24.9	161.5	257.7	35.8
2001/02	59.5	4.6	273.6	12.7	19.4	164.3	262.0	40.6
2002/03	59.2	4.7	280.9	15.0	25.7	169.3	269.9	41.0
2003/04	57.0	4.3	242.3	15.6	14.0	162.1	260.3	24.5
2004/05	59.5	5.3	313.5	10.1	19.6	175.7	275.8	52.6
2005/06	58.4	4.8	278.6	9.5	20.1	172.4	275.1	45.7
2006/07	56.3	4.7	262.3	13.1	18.5	170.5	273.4	29.2
2007/08	56.7	4.5	256.3	27.2	16.9	171.3	270.7	25.1
2008/09	60.1	5.2	312.7	11.2	30.9	174.9	279.6	38.4
2009/10	57.8	5.0	290.1	8.8	22.8	172.1	278.7	35.9

China: Grain Supply and Demand

Wheat and Coarse Grains Millions of Metric Tons/Hectares

	Area Harvested	Yield	Production	Imports	Exports	Feed Dom. Consumpti	Domestic Consumpti	Ending Stocks
Wheat								
1998/99	29.8	3.7	109.7	0.8	0.5	5.0	108.3	97.9
1999/00	28.9	3.9	113.9	1.0	0.5	6.5	109.3	102.9
2000/01	26.7	3.7	99.6	0.2	0.6	10.0	110.3	91.9
2001/02	24.6	3.8	93.9	1.1	1.5	9.0	108.7	76.6
2002/03	23.9	3.8	90.3	0.4	1.7	6.5	105.2	60.4
2003/04	22.0	3.9	86.5	3.7	2.8	6.0	104.5	43.3
2004/05	21.6	4.3	92.0	6.7	1.2	4.0	102.0	38.8
2005/06	22.8	4.3	97.4	1.0	1.4	3.5	101.5	34.4
2006/07	23.6	4.6	108.5	0.4	2.8	4.0	102.0	38.5
2007/08	23.7	4.6	109.3	0.1	2.8	8.0	106.0	39.0
2008/09	23.6	4.8	112.5	0.5	0.7	5.0	102.5	48.7
2009/10	24.0	4.8	114.5	0.8	1.0	6.0	103.0	60.0
Coarse Grains								
1998/99	29.1	4.9	143.5	2.6	3.4	91.4	127.3	123.4
1999/00	29.6	4.6	137.2	2.3	10.0	92.7	128.8	124.2
2000/01	26.5	4.3	114.0	2.4	7.3	94.4	130.4	102.8
2001/02	27.5	4.4	122.2	2.0	8.6	96.2	132.9	85.6
2002/03	28.0	4.7	130.7	1.8	15.3	98.4	136.3	66.5
2003/04	27.1	4.6	124.0	1.5	7.7	99.1	138.3	45.9
2004/05	28.2	4.9	138.3	2.1	7.6	100.3	141.1	37.6
2005/06	29.1	5.1	147.7	2.3	3.8	103.2	147.1	36.7
2006/07	31.4	5.1	159.1	1.2	5.5	105.0	153.5	38.0
2007/08	32.2	4.9	159.1	1.2	0.9	105.8	157.0	40.4
2008/09	32.5	5.3	172.7	1.7	0.2	110.8	160.3	54.2
2009/10	32.6	5.0	161.4	1.7	0.2	116.6	167.2	49.8
Wheat and Coarse Grains								
1998/99	58.8	4.3	253.2	3.4	3.9	96.4	235.6	221.3
1999/00	58.4	4.3	251.1	3.4	10.5	99.2	238.1	227.1
2000/01	53.1	4.0	213.6	2.6	7.9	104.4	240.7	194.7
2001/02	52.1	4.1	216.1	3.1	10.1	105.2	241.6	162.1
2002/03	51.9	4.3	221.0	2.2	17.1	104.9	241.5	126.8
2003/04	49.1	4.3	210.4	5.3	10.5	105.1	242.8	89.2
2004/05	49.8	4.6	230.2	8.8	8.8	104.3	243.1	76.4
2005/06	51.9	4.7	245.1	3.3	5.2	106.7	248.6	71.1
2006/07	55.0	4.9	267.6	1.5	8.2	109.0	255.5	76.5
2007/08	55.9	4.8	268.4	1.2	3.7	113.8	263.0	79.4
2008/09	56.2	5.1	285.1	2.1	0.9	115.8	262.8	102.9
2009/10	56.6	4.9	275.9	2.5	1.2	122.6	270.2	109.8

Other Europe: Grain Supply and Demand

Wheat and Coarse Grains Millions of Metric Tons/Hectares

	Area Harvested	Yield	Production	Imports	Exports	Feed Dom. Consumpti	Domestic Consumpti	Ending Stocks
Wheat								
1998/99	1.6	3.9	6.0	1.0	0.1	0.6	6.6	1.5
1999/00	1.3	3.3	4.2	1.5	0.1	0.7	5.7	1.3
2000/01	1.4	3.3	4.6	1.2	0.3	0.7	5.5	1.4
2001/02	1.4	3.4	4.9	1.8	0.6	0.9	5.9	1.5
2002/03	1.4	3.5	4.9	1.4	0.6	0.9	5.7	1.4
2003/04	1.2	3.1	3.9	1.5	0.1	0.7	5.5	1.2
2004/05	1.4	4.0	5.4	1.5	0.3	1.0	6.0	1.8
2005/06	1.1	3.7	4.2	1.5	0.2	0.9	5.9	1.3
2006/07	1.2	3.6	4.3	1.5	0.6	0.7	5.5	1.1
2007/08	1.2	3.7	4.4	1.9	0.8	0.8	5.6	1.0
2008/09	1.1	4.2	4.7	1.7	0.5	0.8	5.6	1.3
2009/10	1.2	3.8	4.6	1.7	0.7	0.9	5.9	1.0
Coarse Grains								
1998/99	2.8	3.9	11.2	0.4	0.3	10.2	11.6	0.9
1999/00	2.8	4.4	12.2	0.6	0.3	11.2	12.5	0.9
2000/01	2.6	3.1	8.1	1.0	0.0	7.7	9.0	1.0
2001/02	2.7	4.1	10.9	0.8	0.2	9.8	11.1	1.4
2002/03	2.7	4.4	11.7	0.6	0.6	9.9	11.4	1.8
2003/04	2.7	3.5	9.2	0.8	0.1	9.5	10.8	1.1
2004/05	2.7	4.8	12.8	0.6	0.6	10.8	12.2	1.6
2005/06	2.7	4.8	12.7	0.7	1.4	10.7	12.0	1.5
2006/07	2.5	4.6	11.6	0.9	0.9	10.2	11.5	1.5
2007/08	2.6	3.6	9.4	1.0	0.1	9.2	10.5	1.3
2008/09	2.7	4.6	12.4	0.8	1.9	9.3	10.7	1.8
2009/10	2.5	4.8	11.8	0.9	2.2	9.3	10.7	1.6
Wheat and Coarse Grains								
1998/99	4.4	3.9	17.2	1.4	0.4	10.8	18.2	2.4
1999/00	4.0	4.1	16.4	2.1	0.3	11.9	18.2	2.3
2000/01	4.0	3.2	12.7	2.2	0.3	8.4	14.5	2.3
2001/02	4.1	3.9	15.8	2.6	0.8	10.7	17.0	2.9
2002/03	4.1	4.1	16.6	2.0	1.2	10.8	17.0	3.3
2003/04	3.9	3.4	13.1	2.3	0.2	10.2	16.3	2.2
2004/05	4.0	4.5	18.2	2.0	0.9	11.8	18.2	3.4
2005/06	3.8	4.4	16.9	2.1	1.6	11.6	18.0	2.8
2006/07	3.7	4.3	15.9	2.4	1.5	10.9	17.0	2.6
2007/08	3.8	3.6	13.8	2.9	0.9	10.0	16.1	2.3
2008/09	3.8	4.5	17.1	2.4	2.4	10.1	16.3	3.1
2009/10	3.7	4.4	16.4	2.6	2.9	10.2	16.6	2.6

Former Soviet Union: Grain Supply and Demand

Wheat and Coarse Grains Millions of Metric Tons/Hectares

	Area Harvested	Yield	Production	Imports	Exports	Feed Dom. Consumpti	Domestic Consumpti	Ending Stocks
Wheat								
2003/04	40.4	1.5	60.4	7.2	7.9	17.6	65.3	12.6
2004/05	46.5	1.8	85.6	4.9	16.0	21.1	72.3	14.8
2005/06	49.3	1.8	91.1	5.5	20.9	23.5	75.1	15.4
2006/07	45.9	1.9	84.9	6.0	22.3	21.6	72.6	11.3
2007/08	47.5	1.9	92.5	6.0	22.2	23.5	75.0	12.6
2008/09	51.7	2.2	115.5	6.5	37.7	24.9	76.6	20.3
2009/10	54.9	2.1	113.8	5.5	34.6	27.9	80.9	24.2
Coarse Grains								
2003/04	31.4	1.8	55.8	1.5	6.1	39.5	57.0	6.2
2004/05	31.2	2.0	63.3	1.1	8.1	38.6	55.1	7.4
2005/06	28.4	2.0	55.6	1.1	8.6	34.5	50.5	5.0
2006/07	29.8	2.0	58.7	1.0	8.5	35.4	51.2	5.0
2007/08	29.2	1.8	54.1	1.0	5.3	34.9	50.5	4.3
2008/09	30.6	2.6	78.5	0.5	17.0	40.8	57.7	8.5
2009/10	29.8	2.3	67.8	0.5	14.2	39.6	56.1	6.6

Former Soviet Union: Grain Supply and Demand (Wheat)

Millions of Tons/Hectares

Country Mktg Year	Area Harvested	Yield	Production	MY Imports	MY Exports	Feed and Residual	Total Consumpti	Ending Stocks
Former Soviet Union - 12								
Kazakhstan								
2006/07	12.4	1.1	13.5	0.0	8.1	2.7	7.5	1.7
2007/08	12.9	1.3	16.5	0.0	8.2	2.7	7.5	2.5
2008/09	13.5	0.9	12.6	0.1	5.7	2.7	7.5	1.9
2009/10	14.7	1.2	17.0	0.1	7.5	2.7	7.6	3.9
Russia								
2006/07	23.6	1.9	44.9	0.9	10.6	14.1	36.4	4.2
2007/08	24.4	2.0	49.4	0.4	12.6	15.0	37.7	3.9
2008/09	26.7	2.4	63.7	0.2	18.4	16.2	38.9	10.5
2009/10	28.7	2.1	61.7	0.2	17.5	19.0	42.2	12.7
Ukraine								
2006/07	5.5	2.5	14.0	0.1	3.4	2.1	11.7	1.4
2007/08	6.0	2.3	13.9	0.3	1.2	3.0	12.3	2.1
2008/09	7.1	3.7	25.9	0.1	13.0	2.9	11.9	3.1
2009/10	6.8	3.1	20.9	0.1	9.0	3.3	12.6	2.5
Uzbekistan								
2006/07	1.3	4.5	5.9	1.1	0.2	1.1	6.5	1.2
2007/08	1.3	4.8	6.2	1.0	0.2	1.2	6.8	1.4
2008/09	1.4	4.4	6.0	1.4	0.2	1.3	7.1	1.6
2009/10	1.4	4.4	6.2	1.4	0.2	1.3	7.3	1.7
Other Former Soviet Union - 12								
2006/07	3.1	2.2	6.7	3.9	0.1	1.6	10.5	2.8
2007/08	3.0	2.2	6.5	4.2	0.0	1.6	10.7	2.8
2008/09	3.1	2.3	7.3	4.7	0.3	1.8	11.3	3.3
2009/10	3.4	2.4	8.0	3.8	0.4	1.6	11.3	3.3
Total Former Soviet Union - 12								
2006/07	45.9	1.9	84.9	6.0	22.3	21.6	72.6	11.3
2007/08	47.5	1.9	92.5	6.0	22.2	23.5	75.0	12.6
2008/09	51.7	2.2	115.5	6.5	37.7	24.9	76.6	20.3
2009/10	54.9	2.1	113.8	5.5	34.6	27.9	80.9	24.2

Former Soviet Union: Grain Supply and Demand (Barley)

Millions of Tons/Hectares

Country Mktg Year	Area Harvested	Yield	Production	MY Imports	MY Exports	Feed and Residual	Total Consumpti	Ending Stocks
Former Soviet Union - 12								
Kazakhstan								
2006/07	1.8	1.1	1.9	0.1	0.6	1.1	1.4	0.2
2007/08	1.8	1.4	2.5	0.0	0.8	1.4	1.7	0.3
2008/09	2.1	0.9	1.8	0.1	0.3	1.3	1.6	0.3
2009/10	2.0	1.3	2.6	0.0	0.5	1.5	1.8	0.6
Russia								
2006/07	10.0	1.8	18.1	0.2	1.5	11.8	16.4	1.3
2007/08	9.6	1.6	15.7	0.2	1.0	10.5	15.1	1.0
2008/09	9.6	2.4	23.1	0.1	3.4	12.3	17.1	3.6
2009/10	9.1	2.0	17.9	0.1	2.2	12.4	17.1	2.3
Ukraine								
2006/07	5.2	2.2	11.4	0.0	5.1	4.6	6.3	0.8
2007/08	4.1	1.5	6.0	0.0	1.0	3.3	4.9	0.8
2008/09	4.2	3.0	12.6	0.0	6.4	4.3	6.0	1.1
2009/10	5.0	2.4	11.8	0.0	6.0	4.4	6.1	0.8
Uzbekistan								
2006/07	0.1	3.2	0.2	0.0	0.0	0.2	0.3	0.0
2007/08	0.1	3.2	0.2	0.0	0.0	0.2	0.3	0.0
2008/09	0.1	3.2	0.2	0.0	0.0	0.2	0.3	0.0
2009/10	0.1	3.2	0.2	0.0	0.0	0.2	0.3	0.0
Other Former Soviet Union - 12								
2006/07	1.1	2.1	2.3	0.1	0.0	1.8	2.6	0.4
2007/08	1.2	2.2	2.7	0.1	0.0	2.0	2.8	0.4
2008/09	1.2	2.8	3.5	0.1	0.0	2.7	3.5	0.4
2009/10	1.2	2.5	3.0	0.1	0.0	2.1	3.0	0.4
Total Former Soviet Union - 12								
2006/07	18.1	1.9	33.9	0.5	7.3	19.5	26.9	2.6
2007/08	16.8	1.6	27.1	0.4	2.9	17.3	24.7	2.5
2008/09	17.2	2.4	41.2	0.2	10.1	20.8	28.5	5.4
2009/10	17.3	2.1	35.5	0.2	8.7	20.6	28.3	4.1

Former Soviet Union: Grain Supply and Demand (Corn)

Millions of Tons/Hectares

Country Mktg Year	Area Harvested	Yield	Production	MY Imports	MY Exports	Feed and Residual	Total Consumpti	Ending Stocks
Former Soviet Union - 12								
Kazakhstan								
2006/07	0.1	3.2	0.3	0.0	0.0	0.2	0.3	0.0
2007/08	0.1	3.1	0.3	0.0	0.0	0.2	0.3	0.0
2008/09	0.1	3.1	0.3	0.0	0.0	0.2	0.3	0.0
2009/10	0.1	3.1	0.3	0.0	0.0	0.2	0.3	0.0
Russia								
2006/07	1.0	3.6	3.6	0.1	0.1	3.1	3.6	0.2
2007/08	1.3	3.0	4.0	0.3	0.0	3.7	4.3	0.2
2008/09	1.7	4.0	6.6	0.1	1.3	4.5	5.2	0.3
2009/10	1.4	2.9	4.0	0.3	0.3	3.7	4.2	0.1
Ukraine								
2006/07	1.7	3.8	6.4	0.0	1.0	4.5	5.3	1.1
2007/08	1.9	3.9	7.4	0.0	2.1	5.0	5.8	0.7
2008/09	2.4	4.8	11.4	0.0	5.5	4.9	5.7	0.9
2009/10	2.1	5.0	10.5	0.0	5.0	4.9	5.7	0.8
Uzbekistan								
2006/07	0.0	4.6	0.2	0.0	0.0	0.2	0.2	0.0
2007/08	0.0	4.6	0.2	0.0	0.0	0.1	0.2	0.0
2008/09	0.0	4.6	0.2	0.0	0.0	0.1	0.2	0.0
2009/10	0.0	4.6	0.2	0.0	0.0	0.1	0.2	0.0
Other Former Soviet Union - 12								
2006/07	0.8	3.1	2.4	0.4	0.0	2.6	2.8	0.5
2007/08	0.8	2.5	2.1	0.2	0.0	2.3	2.6	0.3
2008/09	0.8	3.9	3.2	0.2	0.0	3.0	3.2	0.4
2009/10	0.8	3.5	2.9	0.1	0.1	2.7	3.0	0.3
Total Former Soviet Union - 12								
2006/07	3.6	3.6	12.9	0.5	1.1	10.5	12.1	1.7
2007/08	4.2	3.3	13.9	0.6	2.1	11.3	13.0	1.1
2008/09	5.0	4.3	21.7	0.3	6.9	12.7	14.5	1.7
2009/10	4.4	4.0	17.8	0.4	5.4	11.6	13.2	1.3

Wheat Supply and Disappearance: Selected Exporters
Million Metric Tons/Hectares

Country Mktg Year	Area Harvested	Yield	Production	MY Imports	MY Exports	Feed and Residual	Total Consumpti	Ending Stocks
Wheat Competitors								
Argentina								
2001/02	7.0	2.2	15.7	0.0	10.3	0.1	5.2	0.7
2002/03	6.2	2.0	12.7	0.0	6.8	0.1	5.3	1.3
2003/04	6.0	2.5	15.1	0.0	9.5	0.1	5.4	1.6
2004/05	6.4	2.6	16.9	0.0	11.9	0.1	5.4	1.2
2005/06	5.5	2.5	13.8	0.0	9.6	0.0	5.1	0.3
2006/07	6.2	2.6	16.3	0.0	10.7	0.1	5.4	0.6
2007/08	6.6	2.8	18.6	0.0	11.2	0.1	5.7	2.3
2008/09	5.1	2.0	10.1	0.0	6.8	0.0	5.3	0.4
2009/10	3.2	3.0	9.6	0.0	4.0	0.0	4.9	1.0
Australia								
2001/02	11.6	2.1	24.3	0.1	16.4	2.7	5.4	8.0
2002/03	11.1	0.9	10.1	0.3	9.1	3.4	6.1	3.2
2003/04	13.1	2.0	26.1	0.1	18.0	3.2	6.0	5.4
2004/05	13.4	1.6	21.9	0.1	14.7	3.2	6.0	6.7
2005/06	12.5	2.0	25.2	0.1	16.0	3.7	6.6	9.4
2006/07	11.8	0.9	10.8	0.1	8.7	4.7	7.6	4.0
2007/08	12.6	1.1	13.6	0.1	7.5	3.5	6.5	3.7
2008/09	13.2	1.6	20.9	0.1	14.7	3.8	6.9	3.1
2009/10	13.8	1.6	22.5	0.1	14.5	4.0	7.1	4.1
Canada								
2001/02	10.6	1.9	20.6	0.3	16.3	3.6	7.7	6.5
2002/03	8.8	1.8	16.2	0.4	9.4	3.7	8.0	5.7
2003/04	10.2	2.3	23.0	0.2	15.8	3.1	7.2	6.0
2004/05	9.4	2.6	24.8	0.3	14.9	3.8	8.2	7.9
2005/06	9.4	2.7	25.7	0.3	16.0	3.8	8.2	9.7
2006/07	9.7	2.6	25.3	0.3	19.4	4.5	9.0	6.9
2007/08	8.6	2.3	20.1	0.4	16.1	2.2	6.8	4.4
2008/09	10.0	2.9	28.6	0.4	18.8	3.2	8.0	6.6
2009/10	9.5	2.8	26.5	0.4	18.0	3.2	8.1	7.4
Total Wheat Competitors								
2001/02	29.2	2.1	60.6	0.4	43.0	6.4	18.3	15.3
2002/03	26.1	1.5	39.0	0.7	25.4	7.2	19.4	10.2
2003/04	29.2	2.2	64.3	0.3	43.3	6.4	18.5	13.0
2004/05	29.2	2.2	63.6	0.3	41.5	7.1	19.6	15.8

Wheat Supply and Disappearance: Selected Exporters (Continued)

Million Metric Tons/Hectares

Country Mktg Year	Area Harvested	Yield	Production	MY Imports	MY Exports	Feed and Residual	Total Consumpti	Ending Stocks
2005/06	27.3	2.4	64.7	0.4	41.7	7.5	19.9	19.4
2006/07	27.7	1.9	52.4	0.4	38.9	9.3	21.9	11.4
2007/08	27.8	1.9	52.2	0.5	34.8	5.8	18.9	10.4
2008/09	28.3	2.1	59.7	0.5	40.3	7.0	20.2	10.1
2009/10	26.5	2.2	58.6	0.5	36.5	7.2	20.1	12.5
India								
2001/02	25.7	2.7	69.7	0.0	3.1	0.5	65.1	23.0
2002/03	25.9	2.8	71.8	0.0	4.9	0.6	74.3	15.7
2003/04	24.9	2.6	65.1	0.0	5.7	0.6	68.3	6.9
2004/05	26.6	2.7	72.2	0.0	2.1	0.5	72.8	4.1
2005/06	26.5	2.6	68.6	0.0	0.8	0.3	70.0	2.0
2006/07	26.4	2.6	69.4	6.7	0.2	0.3	73.4	4.5
2007/08	28.0	2.7	75.8	2.0	0.1	0.2	76.4	5.8
2008/09	28.2	2.8	78.6	0.0	0.1	0.1	70.8	13.5
2009/10	27.9	2.9	80.7	0.3	0.1	0.1	76.9	17.5
Turkey								
2001/02	8.5	1.8	15.5	1.0	0.8	1.1	16.5	1.0
2002/03	8.6	2.0	16.8	1.2	0.8	1.0	16.8	1.4
2003/04	8.6	2.0	16.8	1.1	0.8	1.0	16.8	1.7
2004/05	8.6	2.2	18.5	0.4	2.0	1.0	16.8	1.8
2005/06	8.6	2.2	18.5	0.1	3.2	0.4	16.1	1.1
2006/07	8.6	2.0	17.5	1.7	2.4	0.8	16.7	1.3
2007/08	7.7	2.0	15.5	2.2	1.7	0.8	16.8	0.4
2008/09	7.7	2.2	16.8	3.5	2.2	0.7	16.9	1.6
2009/10	7.8	2.3	18.0	2.8	3.2	0.8	17.3	1.9

Corn Supply and Disappearance: Selected Exporters
Million Metric Tons/Hectares

Country Mktg Year	Area Harvested	Yield	Production	MY Imports	MY Exports	Feed and Residual	Total Consumpti	Ending Stocks
Argentina								
2001/02	2.4	6.1	14.7	0.0	10.9	2.7	4.2	0.6
2002/03	2.5	6.3	15.5	0.0	11.2	2.5	4.1	0.8
2003/04	2.3	6.4	15.0	0.0	10.9	2.8	4.4	0.4
2004/05	2.8	7.4	20.5	0.0	14.6	3.5	5.2	1.1
2005/06	2.4	6.5	15.8	0.1	9.5	4.4	6.2	1.3
2006/07	2.8	8.0	22.5	0.0	15.3	4.8	6.7	1.8
2007/08	3.4	6.5	22.0	0.1	14.8	5.1	7.0	2.2
2008/09	2.5	6.0	15.0	0.1	10.1	4.5	6.4	0.8
2009/10	2.5	8.4	21.0	0.0	12.0	5.2	7.1	2.7
China								
2001/02	24.3	4.7	114.1	0.0	8.6	94.0	123.1	84.8
2002/03	24.6	4.9	121.3	0.0	15.2	96.0	125.9	65.0
2003/04	24.1	4.8	115.8	0.0	7.6	97.0	128.4	44.9
2004/05	25.4	5.1	130.3	0.0	7.6	98.0	131.0	36.6
2005/06	26.4	5.3	139.4	0.1	3.7	101.0	137.0	35.3
2006/07	28.5	5.3	151.6	0.0	5.3	104.0	145.0	36.6
2007/08	29.5	5.2	152.3	0.0	0.5	105.0	149.0	39.4
2008/09	29.9	5.6	165.9	0.0	0.2	110.0	152.0	53.2
2009/10	30.0	5.2	155.0	0.1	0.2	116.0	159.0	49.1
South Africa								
2001/02	3.5	2.8	10.1	0.9	1.1	3.9	8.4	1.9
2002/03	3.7	2.7	9.7	0.4	1.1	4.0	8.5	2.4
2003/04	3.3	2.9	9.7	0.2	0.7	4.1	8.7	3.0
2004/05	3.2	3.6	11.7	0.4	2.1	5.0	9.7	3.2
2005/06	2.0	3.4	6.9	0.9	0.5	4.0	8.2	2.3
2006/07	2.9	2.5	7.3	1.1	0.5	4.4	8.6	1.7
2007/08	3.3	4.0	13.2	0.0	2.2	4.3	9.6	3.1
2008/09	2.9	4.3	12.6	0.0	2.0	4.4	10.0	3.7
2009/10	3.3	4.3	14.0	0.0	2.5	5.0	11.0	4.2
Brazil								
2001/02	11.8	3.0	35.5	0.4	2.1	29.5	35.0	1.5
2002/03	13.0	3.4	44.5	0.7	4.6	30.0	35.8	6.3
2003/04	12.4	3.4	42.0	0.4	4.4	30.5	36.3	7.9
2004/05	11.6	3.0	35.0	0.5	0.7	32.1	38.5	4.2
2005/06	12.9	3.2	41.7	1.1	4.5	33.0	39.5	3.0
2006/07	14.0	3.6	51.0	1.4	10.8	34.5	41.0	3.6

Corn Supply and Disappearance: Selected Exporters (Continued)

Million Metric Tons/Hectares

Country Mktg Year	Area Harvested	Yield	Production	MY Imports	MY Exports	Feed and Residual	Total Consumpti	Ending Stocks
2007/08	14.7	4.0	58.6	0.7	7.8	36.0	42.5	12.6
2008/09	14.1	3.6	51.0	1.1	7.1	37.0	44.5	13.1
2009/10	13.3	4.0	53.5	0.5	8.0	39.5	46.5	12.6
Total Corn Competitors								
2001/02	42.1	4.1	174.4	1.3	22.6	130.1	170.7	88.8
2002/03	43.7	4.4	191.0	1.2	32.2	132.5	174.3	74.4
2003/04	42.1	4.3	182.5	0.6	23.7	134.4	177.8	56.1
2004/05	43.0	4.6	197.5	0.9	25.0	138.6	184.4	45.1
2005/06	43.7	4.7	203.8	2.2	18.3	142.4	190.9	41.9
2006/07	48.2	4.8	232.4	2.6	31.9	147.7	201.3	43.7
2007/08	50.9	4.8	246.1	0.9	25.3	150.4	208.1	57.2
2008/09	49.4	5.0	244.5	1.3	19.4	155.9	212.9	70.7
2009/10	49.1	5.0	243.5	0.7	22.7	165.7	223.6	68.6

Barley Supply and Disappearance: Selected Exporters
Million Metric Tons/Hectares

Country Mktg Year	Area Harvested	Yield	Production	MY Imports	MY Exports	Feed and Residual	Total Consumpti	Ending Stocks
Australia								
2001/02	3.7	2.2	8.3	0.0	4.7	1.8	2.8	1.8
2002/03	3.9	1.0	3.9	0.0	2.0	1.8	2.7	0.9
2003/04	4.5	2.3	10.4	0.0	6.4	2.2	3.1	1.9
2004/05	4.6	1.7	7.7	0.0	4.3	2.5	3.5	1.9
2005/06	4.4	2.2	9.5	0.0	5.3	2.5	3.5	2.6
2006/07	4.2	1.0	4.3	0.0	1.9	2.9	4.0	1.0
2007/08	4.9	1.5	7.2	0.0	3.4	2.1	3.1	1.7
2008/09	4.8	1.6	7.7	0.0	3.2	2.6	3.6	2.5
2009/10	4.5	1.9	8.3	0.0	3.4	3.4	4.5	2.9
Canada								
2001/02	4.2	2.6	10.8	0.1	1.1	8.9	10.3	2.0
2002/03	3.3	2.2	7.5	0.2	0.4	6.5	7.9	1.5
2003/04	4.4	2.8	12.2	0.0	1.8	8.4	9.7	2.1
2004/05	3.8	3.3	12.6	0.1	1.2	8.8	10.1	3.4
2005/06	3.6	3.2	11.7	0.0	2.3	8.4	9.6	3.3
2006/07	3.2	3.0	9.6	0.0	1.2	8.8	10.2	1.5
2007/08	4.0	2.7	11.0	0.1	3.0	6.6	7.9	1.6
2008/09	3.5	3.4	11.8	0.0	1.5	7.7	9.1	2.8
2009/10	2.9	3.3	9.5	0.1	1.5	7.1	8.5	2.5
EU-27								
2001/02	14.1	4.2	58.8	1.4	4.2	39.7	54.9	10.0
2002/03	14.0	4.2	58.2	1.1	5.2	39.3	55.4	8.7
2003/04	14.1	4.0	55.8	0.7	2.6	41.8	58.0	4.5
2004/05	13.7	4.7	64.1	0.3	3.3	38.6	54.6	11.1
2005/06	13.8	4.0	54.8	0.1	3.3	38.2	54.1	8.5
2006/07	13.8	4.1	56.2	0.2	3.5	38.7	55.7	5.8
2007/08	13.8	4.2	57.5	0.3	3.8	38.7	54.2	5.7
2008/09	14.6	4.5	65.5	0.3	3.6	41.5	57.5	10.4
2009/10	14.0	4.4	62.0	0.2	1.0	43.0	59.0	12.5

Sorghum Supply and Disappearance: Selected Exporters

Million Metric Tons/Hectares

Country Mktg Year	Area Harvested	Yield	Production	MY Imports	MY Exports	Feed and Residual	Total Consumpti	Ending Stocks
Argentina								
2001/02	0.5	5.1	2.8	0.0	0.4	2.2	2.3	0.6
2002/03	0.6	5.1	2.8	0.0	0.6	2.1	2.3	0.5
2003/04	0.5	4.6	2.2	0.0	0.2	1.9	2.0	0.4
2004/05	0.6	5.2	2.9	0.0	0.4	2.4	2.6	0.4
2005/06	0.5	4.7	2.3	0.0	0.2	2.1	2.3	0.2
2006/07	0.6	4.7	2.8	0.0	1.1	1.5	1.7	0.2
2007/08	0.6	4.7	2.9	0.0	1.2	1.0	1.2	0.7
2008/09	0.5	3.7	1.7	0.0	1.1	1.0	1.1	0.2
2009/10	0.9	4.9	4.2	0.0	1.2	2.1	2.3	0.9
Australia								
2001/02	0.8	2.5	2.0	0.0	0.4	1.7	1.7	0.1
2002/03	0.7	2.2	1.5	0.0	0.1	1.4	1.4	0.1
2003/04	0.7	2.7	2.0	0.0	0.6	1.4	1.4	0.1
2004/05	0.8	2.7	2.0	0.0	0.2	1.8	1.8	0.1
2005/06	0.8	2.5	1.9	0.0	0.1	1.9	1.9	0.0
2006/07	0.6	2.1	1.3	0.0	0.1	1.2	1.2	0.0
2007/08	0.9	4.0	3.8	0.0	0.8	2.2	2.2	0.8
2008/09	0.8	3.5	2.7	0.0	1.2	1.6	1.6	0.7
2009/10	0.5	2.9	1.6	0.0	0.8	1.0	1.0	0.5

U.S. Grains Supply and Distribution: Wheat, Corn, Sorghum, Barley, Oats, Rye, and Rice

Thousand Metric Tons/Hectares

	Area Harvested	Yield	Rough Production	Production	Imports	TY Imports	Exports	TY Exports	Feed Dom. Consumption	Domestic Consumption	Ending Stocks
Wheat											
2007/08	20,639	3	nr	55,821	3,065	3,012	34,363	34,328	434	28,614	8,323
2008/09	22,541	3	nr	68,016	3,456	3,460	27,637	27,295	7,029	34,291	17,867
2009/10	20,181	3	nr	60,314	3,130	3,250	23,541	23,500	4,899	31,926	25,844
Corn											
2007/08	35,014	9	nr	331,177	509	501	61,913	60,663	150,209	261,632	41,255
2008/09	31,796	10	nr	307,142	344	337	47,184	47,907	133,249	259,053	42,504
2009/10	32,221	10	nr	333,533	254	300	48,262	48,000	138,436	279,794	48,235
Sorghum											
2007/08	2,749	5	nr	12,636	1	1	7,030	6,664	4,188	5,081	1,340
2008/09	2,942	4	nr	11,998	3	3	3,643	3,609	5,896	8,308	1,390
2009/10	2,234	4	nr	9,728	0	0	3,810	3,800	3,556	6,096	1,212
Barley											
2007/08	1,417	3	nr	4,575	636	712	902	901	653	4,324	1,485
2008/09	1,529	3	nr	5,230	632	572	288	158	1,451	5,127	1,932
2009/10	1,260	4	nr	4,949	435	500	109	100	1,089	4,680	2,527
Oats											
2007/08	609	2	nr	1,313	2,125	2,244	42	53	2,080	3,161	969
2008/09	567	2	nr	1,294	1,975	1,787	49	38	1,880	2,968	1,221
2009/10	558	2	nr	1,351	1,637	1,600	44	40	1,855	2,943	1,222
Rye											
2007/08	102	2	nr	160	179	152	6	8	99	335	10
2008/09	109	2	nr	203	100	108	8	6	56	292	13
2009/10	102	2	nr	178	127	125	5	10	64	300	13
Rice, Milled											
2007/08	1,112	8	8,999	6,344	759	651	3,349	3,273	nr	4,078	942
2008/09	1,204	8	9,241	6,515	610	682	2,993	2,950	nr	4,100	974
2009/10	1,256	8	9,972	7,030	667	735	3,294	3,300	nr	4,344	1,033

Notes: Wheat Trade Year (TY) statistics are on July/June years. Barley, corn, sorghum, rye and oats Trade Year (TY) statistics are on Oct/Sept years. Rice Trade Year (TY) statistics are for the subsequent calendar year; 'Imports' and 'Exports' columns contain data on the local marketing year: wheat, barley, oats and rye are June/May; corn and sorghum are Sept/Aug; rice is Aug/July.

Total Wheat and Coarse Grains: Supply and Demand

Millions of Metric Tons/Hectares

	Area Harvested	Yield	Production	TY Exports	Feed Dom. Consumpti	Domestic Consumpti	Ending Stocks
Wheat and Coarse Grains							
1980/81	577.6	2.0	1,159.3	200.6	562.6	1,179.2	255.2
1981/82	587.8	2.0	1,204.0	196.9	573.5	1,178.3	281.0
1982/83	576.9	2.2	1,248.0	189.6	593.4	1,197.1	332.1
1983/84	563.8	2.1	1,162.5	193.2	588.4	1,216.1	278.5
1984/85	567.0	2.3	1,315.0	203.6	609.9	1,253.5	340.0
1985/86	570.9	2.3	1,328.5	165.2	613.1	1,247.9	420.6
1986/87	565.6	2.4	1,348.0	174.7	644.2	1,299.4	469.2
1987/88	544.8	2.4	1,285.7	202.2	655.1	1,329.7	423.0
1988/89	542.4	2.2	1,218.0	203.3	618.2	1,302.0	339.1
1989/90	548.9	2.4	1,327.4	208.9	642.9	1,346.2	320.3
1990/91	549.0	2.6	1,417.5	190.1	667.3	1,369.2	368.6
1991/92	546.3	2.5	1,355.5	207.5	650.1	1,364.7	359.4
1992/93	548.8	2.6	1,431.4	205.2	662.3	1,389.7	398.4
1993/94	539.2	2.5	1,355.8	188.2	654.0	1,388.9	365.2
1994/95	537.6	2.6	1,392.1	200.1	666.9	1,395.6	361.7
1995/96	533.4	2.5	1,338.0	187.5	636.9	1,380.4	319.3
1996/97	552.9	2.7	1,490.2	198.4	669.9	1,442.6	367.0
1997/98	539.4	2.8	1,491.4	190.3	680.9	1,444.5	413.9
1998/99	533.9	2.8	1,481.6	198.7	680.1	1,448.8	446.7
1999/00	514.7	2.8	1,464.7	214.3	685.2	1,467.7	443.1
2000/01	514.0	2.8	1,446.4	205.1	693.9	1,470.3	419.2
2001/02	516.2	2.9	1,479.4	208.5	708.4	1,495.7	402.9
2002/03	506.8	2.8	1,442.8	209.8	707.0	1,506.0	339.7
2003/04	516.3	2.8	1,470.5	206.3	711.7	1,533.9	276.3
2004/05	517.9	3.2	1,641.8	215.1	750.6	1,586.1	332.0
2005/06	520.6	3.1	1,598.2	222.5	749.5	1,616.1	314.1
2006/07	518.4	3.1	1,582.8	230.3	739.8	1,628.5	268.4
2007/08	536.1	3.2	1,689.7	245.2	752.0	1,673.7	284.4
2008/09	537.9	3.3	1,789.5	253.0	758.9	1,715.7	358.2
2009/10	532.4	3.3	1,781.3	237.3	773.8	1,753.6	385.9

Notes: Wheat and coarse grains trade data are on July/June years through 1975/76. From 1976/77 to the present, coarse grains data are on an Oct/Sept trade year.

World Wheat and Coarse Grains: Supply and Demand

Millions of Metric Tons/Hectares

	Area Harvested	Yield	Production	TY Exports	Feed Dom. Consumpti	Domestic Consumpti	Ending Stocks
Wheat							
1987/88	220.1	2.3	498.6	114.1	113.6	530.6	159.3
1988/89	217.9	2.3	495.2	104.3	104.0	519.5	135.1
1989/90	226.3	2.4	533.1	103.9	103.7	531.3	136.8
1990/91	231.7	2.5	588.7	101.3	130.1	554.1	171.5
1991/92	223.4	2.4	543.3	111.4	113.8	551.6	163.1
1992/93	222.8	2.5	562.5	113.2	110.9	548.3	177.0
1993/94	221.8	2.5	558.2	101.7	108.0	552.7	182.5
1994/95	214.5	2.4	522.7	101.5	99.6	541.8	163.4
1995/96	219.1	2.5	537.1	99.2	92.2	544.6	155.9
1996/97	230.3	2.5	581.3	104.0	96.9	573.1	164.1
1997/98	228.5	2.7	610.0	104.5	101.2	576.9	197.2
1998/99	225.4	2.6	590.2	102.0	104.0	579.2	208.3
1999/00	215.7	2.7	586.7	111.9	99.2	585.0	210.1
2000/01	218.0	2.7	583.0	102.4	104.7	585.7	207.3
2001/02	215.4	2.7	583.3	108.0	106.9	586.8	203.8
2002/03	214.8	2.6	568.2	107.0	111.1	603.6	168.4
2003/04	209.9	2.6	554.6	103.7	96.6	589.0	134.0
2004/05	217.6	2.9	626.5	113.9	105.7	607.7	152.8
2005/06	219.7	2.8	619.1	114.0	111.3	622.9	149.0
2006/07	213.3	2.8	595.9	115.7	106.3	616.0	128.9
2007/08	217.9	2.8	611.0	116.5	96.6	617.3	122.7
2008/09	225.1	3.0	683.3	142.6	112.8	640.7	165.2
2009/10	225.4	3.0	678.4	126.3	113.6	647.8	195.8
Coarse Grains							
1987/88	324.7	2.4	787.2	88.1	541.5	799.2	263.7
1988/89	324.6	2.2	722.8	99.0	514.2	782.5	204.0
1989/90	322.5	2.5	794.3	105.0	539.2	814.9	183.4
1990/91	317.2	2.6	828.8	88.9	537.3	815.2	197.1
1991/92	322.9	2.5	812.2	96.2	536.2	813.1	196.3
1992/93	326.0	2.7	868.9	91.9	551.3	841.4	221.3
1993/94	317.4	2.5	797.6	86.5	546.1	836.2	182.7
1994/95	323.1	2.7	869.4	98.6	567.4	853.8	198.3
1995/96	314.4	2.5	800.9	88.2	544.7	835.8	163.4
1996/97	322.6	2.8	908.9	94.4	573.0	869.5	202.9
1997/98	311.0	2.8	881.4	85.8	579.7	867.6	216.7
1998/99	308.5	2.9	891.3	96.7	576.1	869.7	238.3
1999/00	299.0	2.9	878.0	102.4	586.0	882.7	233.1
2000/01	296.0	2.9	863.5	102.7	589.2	884.7	211.9
2001/02	300.8	3.0	896.1	100.5	601.5	908.9	199.1
2002/03	292.0	3.0	874.6	102.7	595.8	902.4	171.3
2003/04	306.4	3.0	915.9	102.6	615.1	944.9	142.3
2004/05	300.3	3.4	1,015.3	101.2	644.9	978.4	179.2
2005/06	300.9	3.3	979.1	108.5	638.2	993.2	165.1
2006/07	305.1	3.2	986.9	114.6	633.5	1,012.5	139.4
2007/08	318.2	3.4	1,078.7	128.7	655.3	1,056.4	161.7
2008/09	312.8	3.5	1,106.2	110.4	646.0	1,074.9	193.0
2009/10	307.0	3.6	1,102.8	111.0	660.2	1,105.8	190.1

Notes: Wheat and coarse grains trade data are on July/June years through 1975/76. From 1976/77 to the present, coarse grains data are on an Oct/Sept trade year.

World Corn and Barley: Supply and Demand

Millions of Metric Tons/Hectares

	Area Harvested	Yield	Production	TY Exports	Feed Dom. Consumpti	Domestic Consumpti	Ending Stocks
Corn							
1987/88	126.9	3.6	451.0	58.8	316.5	458.2	197.7
1988/89	126.1	3.2	400.4	66.0	306.8	452.8	145.3
1989/90	127.3	3.6	461.7	74.5	324.8	474.1	132.9
1990/91	129.2	3.7	482.0	58.8	318.5	473.4	141.4
1991/92	132.6	3.7	493.0	63.0	334.4	493.3	141.0
1992/93	133.2	4.0	535.6	62.6	348.7	512.1	162.7
1993/94	130.7	3.6	475.8	57.4	342.0	509.0	129.4
1994/95	135.2	4.1	559.3	71.9	371.5	535.6	153.2
1995/96	135.0	3.8	516.3	64.8	365.1	536.5	133.0
1996/97	141.6	4.2	592.9	66.7	387.6	560.1	165.8
1997/98	136.3	4.2	574.4	63.1	401.1	573.7	166.5
1998/99	139.2	4.4	605.9	68.7	404.6	581.4	191.0
1999/00	139.0	4.4	608.0	72.3	423.0	605.2	193.9
2000/01	137.2	4.3	591.3	75.9	427.9	610.2	175.0
2001/02	137.7	4.4	601.2	72.8	436.7	625.0	151.3
2002/03	137.2	4.4	602.9	76.9	433.1	627.2	127.0
2003/04	141.9	4.4	627.2	79.1	445.6	649.0	105.2
2004/05	145.2	4.9	715.4	76.0	475.5	688.9	131.6
2005/06	145.5	4.8	699.1	82.6	478.1	706.4	124.3
2006/07	149.4	4.8	713.1	91.4	478.0	728.0	109.4
2007/08	160.0	5.0	792.4	98.2	497.1	772.0	129.9
2008/09	157.2	5.1	794.8	83.8	479.7	777.2	147.5
2009/10	155.4	5.2	805.7	85.4	492.1	809.0	144.2
Barley							
1987/88	78.7	2.2	175.4	18.3	129.6	173.5	33.6
1988/89	76.3	2.2	164.4	19.0	121.9	166.3	31.7
1989/90	73.7	2.3	166.2	18.5	126.0	170.4	27.5
1990/91	73.0	2.5	179.5	19.6	130.8	175.5	31.5
1991/92	76.6	2.2	169.9	19.4	120.3	166.5	34.9
1992/93	73.1	2.3	166.3	16.4	119.0	165.6	35.0
1993/94	73.8	2.3	169.0	18.8	123.8	169.1	34.9
1994/95	72.8	2.2	160.7	15.3	120.9	165.6	30.0
1995/96	68.6	2.1	141.2	13.4	107.8	150.7	20.5
1996/97	65.6	2.3	153.1	17.9	106.3	149.5	24.1
1997/98	64.5	2.4	153.9	12.8	104.0	145.8	32.2
1998/99	60.8	2.2	136.0	17.8	99.5	139.3	29.0
1999/00	54.5	2.3	127.4	17.8	94.0	132.5	23.8
2000/01	53.9	2.5	133.1	16.2	94.6	134.4	22.6
2001/02	56.3	2.5	143.4	17.2	95.5	136.7	29.2
2002/03	55.7	2.4	134.4	16.3	94.9	136.6	27.0
2003/04	59.6	2.4	142.2	14.8	102.5	146.4	22.8
2004/05	57.9	2.6	152.4	16.9	99.9	142.5	32.8
2005/06	56.0	2.4	136.2	17.5	97.3	141.2	27.8
2006/07	56.8	2.4	136.4	14.6	98.1	143.3	21.0
2007/08	57.3	2.3	132.9	18.6	91.3	133.9	20.0
2008/09	55.9	2.8	155.0	18.2	100.4	144.4	30.6
2009/10	55.3	2.7	148.0	16.8	101.9	145.7	32.9

Notes: Coarse grains trade data are on July June years through 1975/76. From 1976/77 to the present, coarse grains data are on an Oct/Sept trade year.

World Rice: Supply and Demand

Millions of Metric Tons/Hectares

	Area Harvested	Yield	Rough Production	Production	TY Exports	Domestic Consumpti	Ending Stocks
Rice, Milled							
1980/81	144.4	2.7	397.0	269.9	11.9	271.2	52.6
1981/82	144.4	2.8	408.3	277.9	11.3	280.0	50.5
1982/83	140.5	3.0	418.2	285.0	11.2	278.7	56.8
1983/84	144.6	3.1	450.9	306.9	11.9	294.4	69.3
1984/85	144.1	3.2	464.9	316.8	11.0	298.4	87.7
1985/86	144.7	3.2	467.3	318.0	11.8	308.0	97.7
1986/87	144.8	3.2	464.6	316.1	12.9	310.4	103.3
1987/88	141.4	3.3	464.8	315.1	11.4	313.1	105.3
1988/89	146.6	3.3	490.8	332.1	14.0	325.7	111.7
1989/90	147.8	3.5	510.3	345.2	11.7	336.3	120.6
1990/91	147.0	3.5	519.4	351.4	12.3	345.3	126.7
1991/92	147.5	3.5	522.8	353.2	14.4	353.2	126.7
1992/93	146.5	3.6	524.2	354.0	14.9	357.5	123.2
1993/94	145.3	3.6	526.1	354.7	16.6	358.9	119.0
1994/95	147.3	3.7	539.7	364.0	20.8	365.4	117.6
1995/96	148.3	3.7	547.3	368.8	19.7	368.3	118.1
1996/97	150.0	3.8	565.4	381.5	18.9	379.3	120.3
1997/98	151.3	3.8	575.0	387.3	27.6	379.8	127.7
1998/99	152.7	3.8	586.9	394.9	24.8	388.6	134.0
1999/00	155.3	3.9	608.9	409.3	22.8	400.3	143.1
2000/01	151.9	3.9	594.5	399.5	24.5	395.9	146.7
2001/02	150.9	3.9	595.6	400.3	27.9	414.1	132.9
2002/03	146.4	3.9	564.4	379.0	27.6	408.8	103.2
2003/04	148.9	3.9	585.8	392.7	27.3	414.9	81.1
2004/05	151.3	4.0	598.0	401.8	29.0	409.5	73.4
2005/06	153.3	4.1	623.5	418.6	29.1	416.0	76.0
2006/07	154.1	4.1	627.1	420.5	31.9	421.4	75.1
2007/08	155.0	4.2	647.5	434.0	29.7	428.1	81.0
2008/09	158.1	4.2	667.0	447.2	28.8	437.3	90.9
2009/10	154.8	4.2	657.4	440.8	30.0	441.5	90.2

Notes: Stocks, exports and consumption are expressed on a milled basis in marketing years.

ENDNOTES TO GRAIN: WORLD MARKETS AND TRADE

REGIONAL TABLES

North America: Canada, Mexico, the United States.

Central America: Belize, Costa Rica, El Salvador, Guatemala, Honduras, Nicaragua, Panama.

Caribbean: Anguilla, Antigua and Barbuda, Aruba, Bahamas, Barbados, Bermuda, British Virgin Islands, Cayman Islands, Cuba, Dominica, Dominican Republic, French West Indies, Grenada, Guadeloupe, Haiti, Jamaica and Dep, Leeward-Windward Islands, Martinique, Montserrat, Netherlands Antilles, Puerto Rico, Kitts and Nevis, St. Lucia, St. Vincent and the Grenadines, Trinidad and Tobago, Turks and Caicos Islands, Virgin Islands of the U.S.

South America: Argentina, Bolivia, Brazil, Chile, Colombia, Ecuador, Falkland Islands (Islas Malvinas), French Guiana, Guyana, Paraguay, Peru, Suriname, Uruguay, Venezuela.

EU: Austria, Belgium/Luxembourg, Bulgaria, Cyprus, Czech Republic, Denmark, Estonia, Finland, France, Germany, Greece, Hungary, Ireland, Italy, Latvia, Lithuania, Malta, Netherlands, Poland, Portugal, Romania, Slovakia, Slovenia, Spain, Sweden, United Kingdom.

Other Europe: Albania, Azores, Bosnia and Herzegovina, Croatia, Former Yugoslavia, Gibraltar, Iceland, Macedonia, Montenegro, Norway, Serbia, Switzerland.

Former Soviet Union: Armenia, Azerbaijan, Belarus, Georgia, Kazakhstan, Kyrgyzstan, Moldova, Russia, Tajikistan, Turkmenistan, Ukraine, Uzbekistan.

Middle East: Bahrain, Iran, Iraq, Israel, Jordan, Kuwait, Lebanon, Oman, Qatar, Saudi Arabia, Syria, Turkey, United Arab Emirates, Yemen.

North Africa: Algeria, Egypt, Libya, Morocco, Tunisia.

Sub-Saharan Africa: all African countries except North Africa.

East Asia: China, Hong Kong, Japan, South Korea, North Korea, Macau, Mongolia, Taiwan.

South Asia: Afghanistan, Bangladesh, Bhutan, India, Nepal, Pakistan, Sri Lanka, Maldives.

Southeast Asia: Brunei, Burma, Cambodia, Indonesia, Laos, Malaysia, Philippines, Singapore, Thailand, Vietnam.

Oceania: Australia, Fiji, New Zealand, Papua New Guinea.

OTHER NOTES

Local Marketing Years (LMY): LMY refers to the 12-month period following the main harvest, when the crop is marketed (i.e., consumed, traded, or stored). The year first listed begins a country's LMY for that commodity (2008/09 starts in 2008); except for summer grains in certain Southern Hemisphere countries and for rice in selected countries, where the second year begins the LMY (2008/09 starts in 2009). Key exporter LMY's are:

Wheat	Corn	Barley	Sorghum
Argentina (Dec/Nov)	Argentina (Mar/Feb)	Australia (Nov/Oct)	Argentina (Mar/Feb)
Australia (Oct/Sep)	Brazil (Mar/Feb)	Canada (Aug/Jul)	Australia (Mar/Feb)
Canada (Aug/Jul)	China (Oct/Sep)	EU-27 (Jul/Jun)	United States (Sep/Aug)
China (Jul/Jun)	South Africa (May/Apr)	Russia (Jul/Jun)	
EU-27 (Jul/Jun)	United States (Sep/Aug)	Ukraine (Jul/Jun)	
India (Apr/Mar)		United States (Jun/May)	
Kazakhstan (Jul/Jun)			
Russia (Jul/Jun)			
Turkey (Jun/May)			
Ukraine (Jul/Jun)			
United States (Jun/May)			

For a complete list of local marketing years, please see the FAS website (<http://www.fas.usda.gov/psdonline/psdAvailability.aspx>).

Stocks: Unless otherwise stated, stock data are based on an aggregate of differing local marketing years and should not be construed as representing world stock levels at a fixed point in time.

Consumption: World totals for consumption reflect total utilization, including food, seed, industrial, feed, and waste; as well as differences in local marketing year imports and local marketing year exports. Consumption statistics for regions and individual countries, however, reflect food, seed, industrial, feed, and waste only.

Trade: All PSD tables are balanced on the different local marketing years. All trade tables contain Trade Year (TY) data which puts all countries on a uniform, 12-month period for analytical comparisons: wheat is July/June; coarse grains, corn, barley, sorghum, oats, and rye are Oct/Sept; and rice is calendar year.

EU Consolidation: The trade figures starting from 1999/00 represent EU-27 and exclude all intra-trade. For the years 1960/61 through 1998/99, figures are the EU-15 and also exclude all intra-trade. EU-15 member states' data for grains are no longer maintained in the official USDA database. Data for the individual NMS-10, plus Bulgaria and Romania, exists only prior to 1999/00.

Statistics: (1) Wheat trade statistics include wheat, flour, and selected pasta products on a grain equivalent basis. (2) Rice trade statistics include rough, brown, milled, and broken on a milled

equivalent basis. (3) Coarse grains statistics include corn, barley, sorghum, oats, rye, millet, and mixed grains but exclude trade in barley malt, millet, and mixed grains.

Unaccounted: This term includes grain in transit, reporting discrepancies in some countries, and trade to countries outside the USDA database.

The Field Crops and Livestock Branch, Industry and Sector Analysis Division, Foreign Agricultural Service, USDA, Washington DC 20250, prepared this circular. Information is gathered from official statistics of foreign governments and other foreign source materials, reports of U.S. agricultural attachés and Foreign Service officers, office research, and related information. Further information may be obtained by writing the Division or telephoning (202) 720-6590.

Note: The previous report in this series was the Grain: World Markets and Trade Foreign Agricultural Service Circular FG 03-10 March 2010. For further details on world grain production, please see World Agricultural Production Foreign Agricultural Service Circular WAP 04-10 April 2010.

This circular is available in its entirety on the World Wide Web via the Foreign Agricultural Service Home Page. The address is: <http://www.fas.usda.gov>