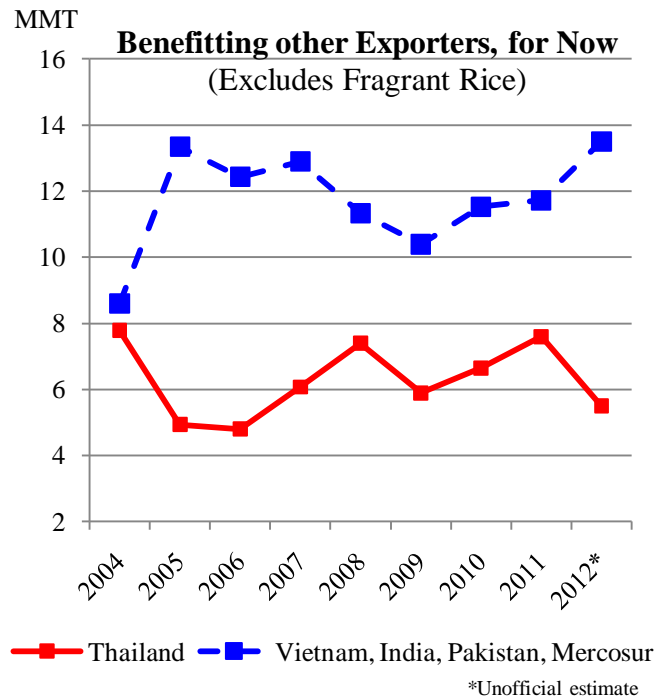
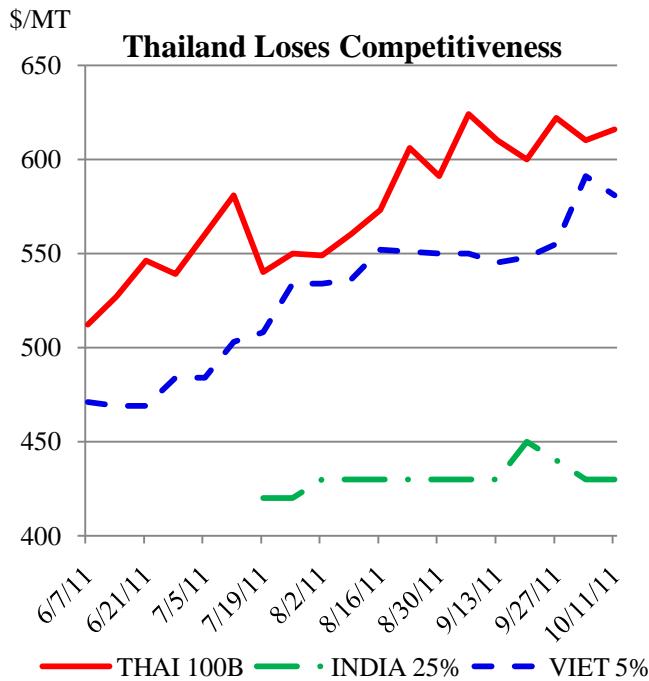




Grain: World Markets and Trade

Thai Rice: Not the Only Game in Town



In contrast to 2007/08, when Thai quotes nearly tripled on fears of shortages due to massive Philippine purchases and export bans (India and Vietnam), the recent climb has been largely caused by Thailand’s intervention program. The Thai government effectively creates a domestic price floor by purchasing local rice well above current prices (via a non-recourse loan). This benefits the competition, which can raise prices and still undercut Thailand, gaining market share. For example, India, which recently began exporting after a 4-year ban, is gobbling up Thai markets even as Vietnam and Mercosur push out record exports.

The benefit for other exporters can be short-lived, however. Thai stocks are likely accumulate and overhang the market, and mere rumors of a release can eventually cause prices to crash. On the importer side, the adverse impact of rising Thai quotes is mitigated as buyers switch to lower-priced suppliers. Poor countries may also substitute lower quality rice in an effort to keep prices down. Long-term, however, the uncertainty associated with the Thai program may increase price volatility and lead to greater risk for buyers, sellers, and farmers.

TABLE OF CONTENTS

World Markets and Trade: Commentary and Current Data	
Wheat	4
Rice	9
Coarse Grains	14
Historical Data Series for Selected Regions and Countries	35
Endnotes to Grain: World Markets and Trade	54

The Foreign Agricultural Service (FAS) updates its production, supply and distribution database for cotton, oilseeds, and grains at 9 a.m. on the day the World Agricultural Supply and Demand Estimates (WASDE) report is released. It is available on the FAS website (<http://www.fas.usda.gov/psdonline/>). This circular is released at 10:00 a.m. on the same day, together with its downloadable data set.

All Grain Summary Comparison

	Marketing Year	Wheat			Rice, Milled			Corn		
		2009/10	2010/11	2011/12	2009/10	2010/11	2011/12	2009/10	2010/11	2011/12
Production										
United States	(Jun-May)	60.4	60.1	54.7	7.1	7.6	6.0	332.5	316.2	315.8
Other		624.0	588.1	626.5	433.2	443.8	455.4	486.9	512.1	544.3
World Total		684.4	648.2	681.2	440.3	451.4	461.4	819.4	828.3	860.1
Domestic Consumption										
United States	(Jun-May)	31.0	30.7	32.1	4.0	4.4	4.0	281.6	285.0	282.2
Other		617.5	621.4	639.1	430.6	441.2	451.3	534.6	558.0	580.9
World Total		648.5	652.1	671.2	434.6	445.5	455.3	816.2	843.0	863.1
Ending Stocks										
United States	(Jun-May)	26.6	23.5	22.8	1.2	1.5	1.2	43.4	28.7	22.0
Other		174.2	172.1	179.6	93.0	96.3	100.2	100.5	101.1	101.2
World Total		200.7	195.6	202.4	94.2	97.8	101.4	143.9	129.8	123.2
TY Imports										
United States	(Jun-May)	3.2	2.6	3.2	0.6	0.6	0.7	0.2	0.7	0.4
Other		128.6	126.5	128.8	28.3	30.6	29.5	90.5	89.4	90.2
World Total		131.8	129.0	132.0	28.9	31.2	30.2	90.7	90.1	90.6
TY Exports										
United States	(Jun-May)	24.2	36.0	26.0	3.9	3.3	3.1	49.7	45.5	41.0
Other		110.2	96.3	108.6	27.7	31.0	29.9	43.2	45.4	52.3
World Total		134.4	132.3	134.6	31.6	34.2	33.0	93.0	90.9	93.3

Note: Consumption in this table has not been adjusted for differences in marketing year imports and exports and therefore differs from global totals shown elsewhere.

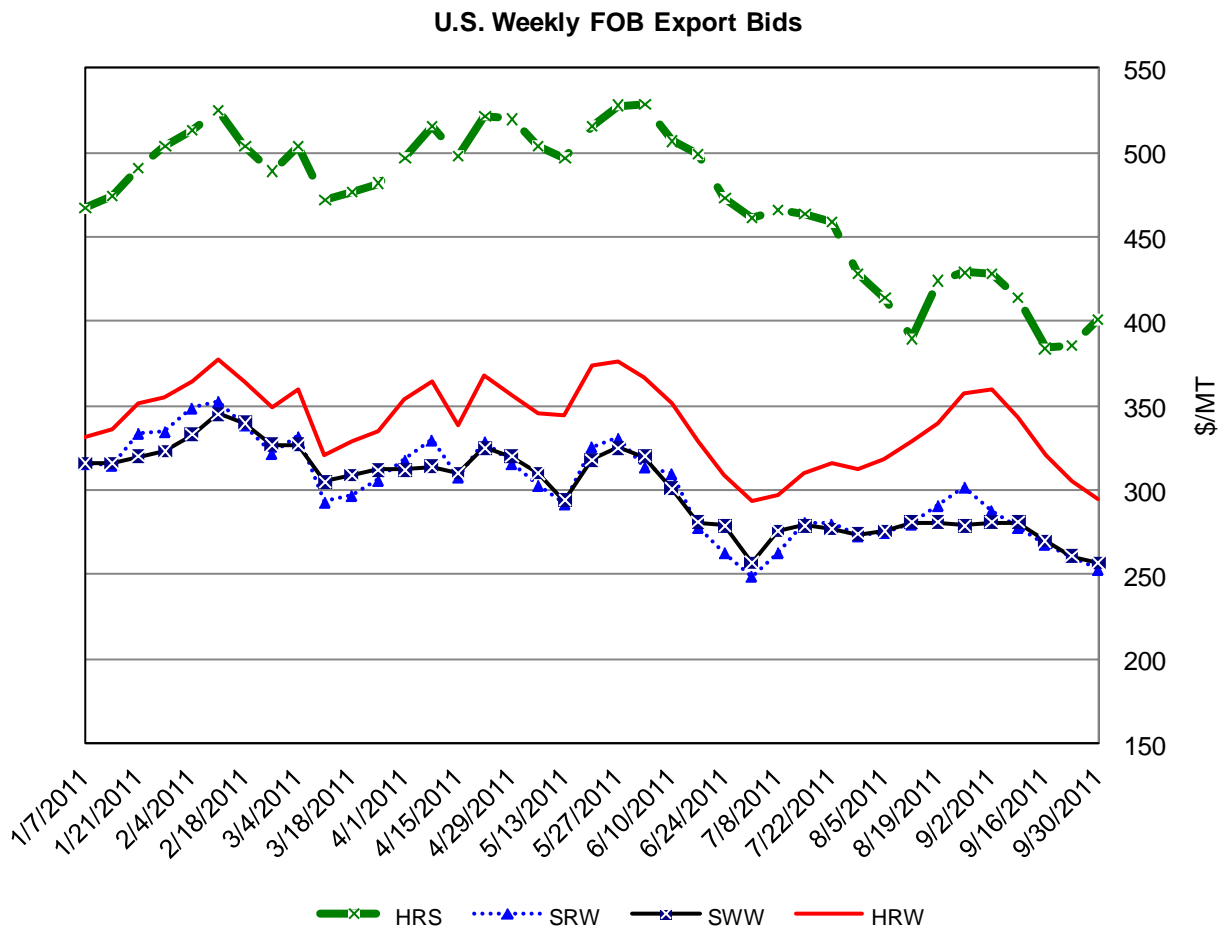
Marketing years for U.S. grains are: Wheat (Jun-May), Rice (Aug-Jul), Corn (Sep-Aug).
'Marketing Year' column is germane for U.S. wheat only.

WHEAT: WORLD MARKETS AND TRADE

OVERVIEW

Global trade for 2011/12 is up 2.3 million tons as a result of stronger demand, primarily in Egypt, Morocco and Turkey. U.S. exports are reduced again this month as a result of tight durum and spring wheat supplies coupled with increased competition from Canada and Australia. The forecast U.S. season-average price remains a record, but is lowered this month on large domestic and foreign supplies.

PRICES:



Domestic: Prices of all wheat classes plunged this month; however, Hard Red Spring (HRS) has reversed some of its losses on tighter supplies. The broader price declines are primarily driven by negative macroeconomic factors and larger-than-expected September 1 corn and wheat stocks. Hard Red Winter (HRW) dropped 18 percent to \$295/ton as recent rains allayed concerns over winter wheat planting. Soft Red Winter (SRW) fell 12 percent to \$253 per ton, mostly following corn prices lower. HRS prices are down 6 percent to \$401/ton. Soft White Wheat (SWW) fell 9 percent to \$257 per ton.

Grain: World Markets and Trade, October 2011

TRADE CHANGES IN 2011/12

Selected Exporters

- **Australia** is boosted 2.0 million tons to a record 19.0 million as a result of larger supplies and continued import demand for old-crop feed-quality wheat.
- **Canada** is raised 1.0 million tons to 18.0 million attributable to strong global demand for high-quality wheat and tightening supplies in the United States.
- **India** is up 600,000 tons to 1.0 million on the government's recent announcement lifting the export ban.
- **Kazakhstan** is up 1.0 million tons to a record 8.5 million due to government transportation subsidies and the rail car loan agreement with Russia.
- **Pakistan** is cut 700,000 tons to 300,000 in response to increased competition from Black Sea countries and India.
- **Russia** is raised 2.0 million tons to 18.0 million spurred by strong import demand for its competitively priced wheat.
- **Ukraine** is lowered 1.0 million to 8.0 million due to strong competition with Russia and a slow export pace.
- **United States** is cut 2.0 million tons to 26.0 million because of increased competition from Canada and Australia and tight supplies of durum and spring wheat.

Selected Importers

- **Egypt** is raised 500,000 tons to 10.5 million on higher demand for lower-priced Black Sea wheat.
- **Morocco** is up 500,000 tons to 2.6 million because of the government's lifting of import duties making imports much less expensive.
- **Turkey** is up 500,000 tons to 3.5 million due to a stronger-than-expected import pace, particularly of Russian wheat.
- **United States** is boosted 300,000 tons to 3.2 million in response to tight domestic supplies of high-quality spring wheat and durum and greater exportable supplies in Canada.

World Wheat, Flour, and Products Trade
July/June Year, Thousand Metric Tons

	2007/08	2008/09	2009/10	2010/11	2011/12 Sep	2011/12 Oct
TY Exports						
Argentina	10,228	8,621	5,172	7,738	8,000	8,000
Australia	7,449	13,450	13,764	18,477	17,000	19,000
Canada	16,561	18,674	18,992	16,768	17,000	18,000
China	2,835	723	892	941	1,000	1,000
EU-27	12,272	25,351	22,115	22,850	16,000	16,000
Kazakhstan	8,181	5,701	7,871	5,519	7,500	8,500
Russia	12,220	18,393	18,556	3,983	16,000	18,000
Turkey	1,763	2,342	4,371	2,946	3,500	3,500
Ukraine	1,236	13,037	9,337	4,302	9,000	8,000
Uruguay	422	616	994	1,197	1,100	1,100
Others	8,984	8,952	8,157	11,626	8,239	7,514
Subtotal	82,151	115,860	110,221	96,347	104,339	108,614
United States	34,282	27,101	24,172	35,977	28,000	26,000
World Total	116,433	142,961	134,393	132,324	132,339	134,614
TY Imports						
Afghanistan	2,300	3,800	2,500	2,300	3,000	3,000
Algeria	5,904	6,356	5,167	6,436	5,800	5,800
Bangladesh	1,500	2,882	3,331	3,900	2,800	2,800
Brazil	7,076	6,762	6,667	6,710	6,700	6,700
Egypt	7,700	9,900	10,300	10,600	10,000	10,500
EU-27	6,933	7,737	5,519	4,712	7,500	7,500
Indonesia	5,227	5,419	5,364	6,611	6,700	6,700
Iraq	3,429	3,879	3,905	3,632	3,700	3,700
Israel	1,189	2,063	1,862	1,392	1,700	1,700
Japan	5,701	5,156	5,502	5,869	5,800	5,800
Korea, South	3,092	3,371	4,470	4,761	4,700	4,700
Libya	1,574	1,689	2,091	1,419	1,400	1,600
Mexico	3,136	3,342	3,196	3,462	3,600	3,600
Morocco	4,192	3,759	2,304	3,903	2,100	2,600
Nigeria	2,633	3,550	4,079	4,051	4,100	4,100
Peru	1,444	1,385	1,703	1,757	1,700	1,700
Philippines	2,266	3,201	3,188	3,235	3,000	3,000
Saudi Arabia	75	1,275	1,910	1,741	2,000	2,000
Sudan	1,060	1,712	1,901	1,642	1,800	1,800
Thailand	1,072	1,128	1,600	1,920	1,400	1,600
Tunisia	2,372	1,768	1,534	1,773	1,700	1,800
Turkey	2,192	3,578	3,218	3,517	3,000	3,500
Uzbekistan	990	1,440	1,677	1,618	1,600	1,600
Vietnam	1,066	1,016	1,927	2,460	2,200	2,200
Yemen	1,900	2,796	2,602	2,705	2,700	2,700
Others	34,453	47,823	41,046	34,325	36,055	36,105
Subtotal	110,476	136,787	128,563	126,451	126,755	128,805
Unaccounted	3,005	2,775	2,595	3,302	2,684	2,609
United States	2,952	3,399	3,235	2,571	2,900	3,200
World Total	116,433	142,961	134,393	132,324	132,339	134,614

TY=Trade Year, see Endnotes.

World Wheat Production, Consumption, and Stocks
Local Marketing Years, Thousand Metric Tons

	2007/08	2008/09	2009/10	2010/11	2011/12 Sep	2011/12 Oct
Production						
Argentina	18,600	11,000	11,000	15,000	13,500	13,500
Australia	13,569	21,420	21,923	26,000	25,000	26,000
Canada	20,054	28,611	26,848	23,167	24,000	24,200
China	109,298	112,464	115,120	115,180	117,000	117,000
Egypt	8,275	7,977	8,523	7,200	8,700	8,700
EU-27	120,133	151,122	138,816	135,609	135,786	136,330
India	75,810	78,570	80,680	80,800	85,930	85,930
Iran	15,887	7,957	13,485	15,500	13,750	13,750
Kazakhstan	16,467	12,538	17,052	9,700	16,000	19,000
Morocco	1,583	3,730	6,400	4,887	6,100	6,100
Pakistan	23,295	20,959	24,000	23,900	24,000	24,000
Russia	49,368	63,765	61,770	41,508	56,000	56,000
Turkey	15,500	16,800	18,450	17,000	18,500	18,500
Ukraine	13,938	25,885	20,866	16,844	22,000	22,000
Uzbekistan	6,200	6,000	6,200	6,500	6,300	6,300
Others	48,297	45,976	52,896	49,300	49,035	49,235
Subtotal	556,274	614,774	624,029	588,095	621,601	626,545
United States	55,821	68,016	60,366	60,062	56,514	54,650
World Total	612,095	682,790	684,395	648,157	678,115	681,195
Total Consumption						
Algeria	8,050	8,300	8,550	8,750	8,850	8,850
Brazil	10,300	10,700	11,000	10,800	10,800	10,800
Canada	6,793	7,977	6,927	7,736	8,700	8,800
China	106,000	105,500	107,000	109,500	113,000	113,000
Egypt	15,800	17,200	17,900	17,700	18,300	18,800
EU-27	116,536	127,000	125,000	122,000	126,500	126,500
India	76,423	70,924	78,150	81,810	84,700	84,700
Iran	15,500	15,800	16,100	15,700	15,000	15,000
Kazakhstan	7,800	7,500	7,800	6,700	7,700	7,900
Morocco	7,225	7,450	8,100	8,250	8,750	8,750
Pakistan	22,400	22,800	23,000	23,200	23,400	23,400
Russia	37,650	38,900	39,600	38,600	40,600	38,600
Turkey	16,800	16,900	17,100	17,200	18,100	18,100
Ukraine	12,300	11,900	12,300	11,600	12,000	12,500
Uzbekistan	7,000	7,100	7,500	7,800	7,900	7,900
Others	118,614	125,908	131,519	134,052	136,091	135,541
Subtotal	589,062	608,419	619,769	622,589	642,527	642,369
United States	28,614	34,293	30,978	30,710	34,333	32,065
World Total	617,676	642,712	650,747	653,299	676,860	674,434
Ending Stocks						
Australia	3,851	3,389	5,682	7,376	4,257	7,876
Canada	4,406	6,547	7,829	7,189	5,889	4,989
China	39,081	45,803	54,425	60,091	64,091	64,091
Egypt	4,274	4,857	5,596	5,509	5,821	5,809
EU-27	12,429	18,937	16,157	11,628	12,452	12,958
India	5,800	13,430	16,120	15,360	16,190	15,590
Russia	4,068	10,743	14,521	13,535	13,146	13,135
Others	44,788	45,525	53,864	51,450	52,042	55,135
Subtotal	118,697	149,231	174,194	172,138	173,888	179,583
United States	8,323	17,867	26,552	23,466	20,706	22,782
World Total	127,020	167,098	200,746	195,604	194,594	202,365

Regional Wheat Imports, Production, Consumption, and Stocks

Thousand Metric Tons

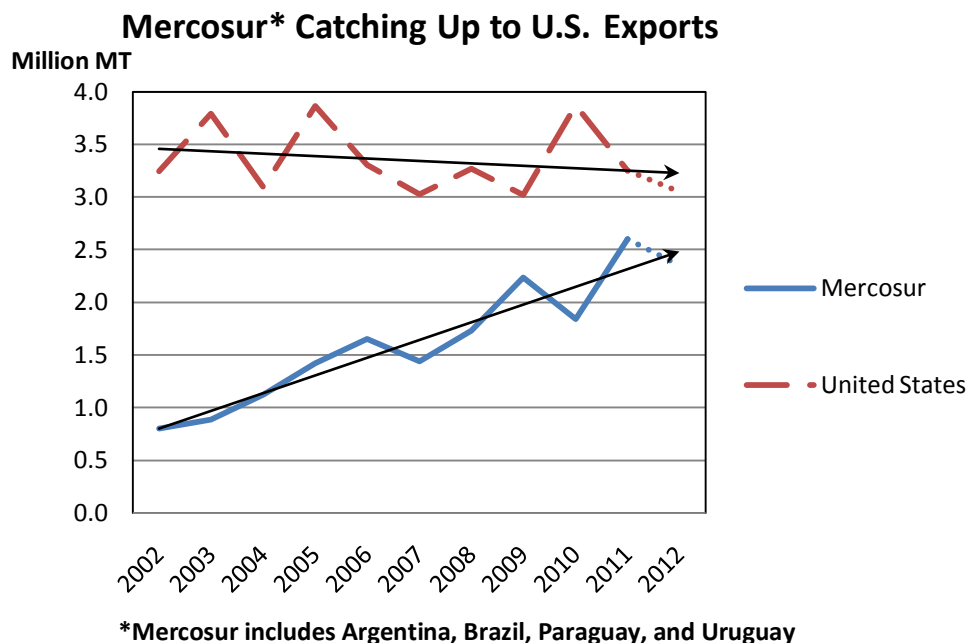
	2007/08	2008/09	2009/10	2010/11	Sep 2011/12	Oct 2011/12
TY Imports						
North America	6,475	7,128	6,834	6,462	6,900	7,200
Central America	1,460	1,489	1,469	1,678	1,525	1,525
South America	13,092	13,074	13,091	12,935	12,990	12,990
European Union	6,933	7,737	5,519	4,712	7,500	7,500
Other Europe	1,923	1,712	1,696	1,649	1,685	1,735
Former Soviet Union - 12	6,032	6,569	5,415	5,473	5,850	5,800
Middle East	11,810	28,218	22,515	16,830	18,125	18,475
North Africa	21,742	23,472	21,396	24,131	21,000	22,300
Sub-Saharan Africa	10,287	13,707	15,773	14,475	14,945	15,045
East Asia	11,277	11,322	13,745	13,892	13,800	13,900
South Asia	8,215	10,771	7,586	7,662	7,210	7,210
Southeast Asia	11,405	12,324	13,902	16,301	15,250	15,450
Others	2,777	2,663	2,857	2,822	2,875	2,875
Total	113,428	140,186	131,798	129,022	129,655	132,005
Production						
North America	79,468	100,627	91,362	86,908	84,164	82,500
South America	25,435	20,516	21,039	25,251	23,462	23,462
European Union	120,133	151,122	138,816	135,609	135,786	136,330
Other Europe	4,405	4,712	4,609	3,800	4,280	4,280
Former Soviet Union - 12	92,470	115,491	113,927	80,971	107,445	110,445
Middle East	41,040	30,325	38,369	40,175	39,040	39,040
North Africa	13,948	14,352	20,261	16,133	19,325	19,325
Sub-Saharan Africa	5,547	6,103	6,155	5,592	5,860	6,060
East Asia	110,590	113,776	116,281	116,240	118,240	118,240
South Asia	105,070	103,898	111,200	111,020	115,050	115,050
Oceania	13,846	21,697	22,200	26,277	25,277	26,277
Others	143	171	176	181	186	186
Total	612,095	682,790	684,395	648,157	678,115	681,195
Domestic Consumption						
North America	40,907	48,270	44,205	45,046	49,483	47,315
South America	24,346	24,494	25,708	25,523	25,640	25,640
European Union	116,536	127,000	125,000	122,000	126,500	126,500
Other Europe	5,495	5,560	5,469	5,306	5,340	5,370
Former Soviet Union - 12	75,356	76,041	78,200	75,475	79,045	77,845
Middle East	50,758	52,669	53,615	53,860	54,400	54,450
North Africa	35,825	37,475	39,350	39,425	40,500	41,250
Sub-Saharan Africa	15,696	18,605	20,616	20,215	20,381	20,376
East Asia	117,556	117,188	120,068	122,472	126,325	126,350
South Asia	109,638	105,304	113,861	117,401	120,080	120,280
Southeast Asia	11,009	12,054	13,288	14,952	14,760	14,960
Oceania	7,383	8,120	5,835	7,044	8,905	7,505
Others	3,300	3,372	3,309	3,389	3,365	3,365
Total	613,805	636,152	648,524	652,108	674,724	671,206
Ending Stocks						
North America	13,108	24,729	34,901	30,895	27,156	28,011
South America	4,571	4,015	4,481	3,739	4,322	4,329
European Union	12,429	18,937	16,157	11,628	12,452	12,958
Other Europe	1,817	2,176	2,177	1,495	1,590	1,575
Former Soviet Union - 12	13,878	22,148	26,629	23,470	25,056	27,160
Middle East	11,610	11,564	15,050	14,651	13,302	13,704
North Africa	9,186	9,216	11,148	11,633	11,131	11,733
Sub-Saharan Africa	1,203	1,694	2,360	1,471	1,454	1,630
East Asia	41,899	48,637	57,213	63,435	67,660	67,735
South Asia	10,079	17,359	21,430	21,420	21,850	21,250
Southeast Asia	2,771	2,713	2,915	3,795	3,788	3,825
Oceania	4,117	3,606	5,873	7,633	4,517	8,135
Others	352	304	412	339	316	320
Total	127,020	167,098	200,746	195,604	194,594	202,365

NOTES: Regional definitions appear on last page of this circular. Imports are reported on a trade year basis. All other data are reported using local marketing years.

RICE: WORLD MARKETS AND TRADE

OVERVIEW

Global trade hits a new high in 2011 on record exports from Thailand, Vietnam, and South America, as well as the lifting of India's export ban on non-basmati rice. U.S. exports, on the other hand, are expected to decline in 2011 and 2012 from the 2010 record. Global stocks are forecast to climb for the fifth consecutive year.



Mercosur's exports have grown by two-thirds in the last decade, while U.S. exports have bounced around 3.3 million tons during the same time period. Rising Mercosur production and flat consumption have gradually boosted exportable supplies. This 10-year trend has put the region within striking distance of U.S. exports. In 2011, higher U.S. prices combined with a small U.S. crop and record Mercosur production have enabled member countries to encroach on traditional U.S. markets.

TRADE CHANGES IN 2011

Selected Exporters

- **Brazil** is bumped 100,000 tons to 850,000, a record by a huge margin, on sales to West Africa.
- **Burma** is boosted 200,000 tons to 1.0 million on the pace of shipments to date.
- **China** is lowered 100,000 tons to 500,000 on the slow pace of exports.

-
- **India** jumps 300,000 tons to 3.8 million as the country re-enters the non-basmati market after nearly 4 years.
 - **Thailand** swells 500,000 tons to a record 10.5 million on sales to date. Shipments are expected to decline markedly in the coming months, however, as the new intervention program makes Thai rice uncompetitive.

Selected Importers

- **Nigeria** moves up 300,000 tons to a record 2.2 million on recent shipments from Thailand and Brazil and expected purchases from India.
- **Philippines** is raised 300,000 tons to 1.5 million on larger-than-expected sales from Vietnam and Thailand.

TRADE CHANGES IN 2012

Selected Exporters

- **India** surges 1.0 million tons to 4.5 million on a larger crop and competitive prices.
- **Pakistan** is down 150,000 tons to 3.8 million on a smaller crop and greater competition from India.
- **Vietnam** is boosted 300,000 tons to 6.7 million as Thailand exports less.

Selected Importers

- **Bangladesh** is raised 200,000 tons to 750,000 on expected purchases of Indian rice.
- **Nigeria** is up 200,000 tons to 2.2 million as the current pace of purchases is expected to continue.

World Rice Trade
January/December Year, Thousand Metric Tons

	2007/08	2008/09	2009/10	2010/11	2011/12 Sep	2011/12 Oct
TY Exports						
Argentina	408	594	468	600	600	600
Australia	48	17	54	350	450	450
Brazil	511	591	430	850	750	750
Burma	541	1,052	445	1,000	800	800
Cambodia	500	800	1,000	1,000	1,000	1,000
China	969	783	619	500	600	600
Egypt	750	575	570	80	500	500
EU-27	157	150	282	300	350	350
Guyana	185	244	275	250	230	230
India	3,383	2,123	2,052	3,800	3,500	4,500
Japan	200	200	200	200	150	150
Pakistan	3,050	3,187	4,000	2,800	3,900	3,750
Thailand	10,011	8,570	9,047	10,500	8,000	8,000
Uruguay	742	926	808	975	850	850
Vietnam	4,649	5,950	6,734	7,000	6,400	6,700
Others	392	556	755	789	675	690
Subtotal	26,496	26,318	27,739	30,994	28,755	29,920
United States	3,267	3,017	3,868	3,250	3,050	3,050
World Total	29,763	29,335	31,607	34,244	31,805	32,970
TY Imports						
Bangladesh	1,658	150	660	1,400	550	750
Brazil	417	650	778	500	500	500
Canada	365	322	358	330	340	340
China	295	337	366	600	400	400
Cote d'Ivoire	800	800	840	900	950	950
Cuba	558	457	498	600	525	525
EU-27	1,520	1,383	1,216	1,150	1,070	1,070
Hong Kong	399	397	390	410	415	415
Indonesia	350	250	1,150	2,200	1,400	1,400
Iran	1,430	1,470	1,000	1,400	1,500	1,500
Iraq	975	1,089	1,140	1,150	1,200	1,200
Japan	533	750	649	700	700	700
Korea, South	282	245	320	330	350	350
Malaysia	1,039	1,086	907	1,040	1,130	1,130
Mexico	578	610	598	655	700	700
Mozambique	300	385	325	400	375	375
Nigeria	1,800	2,000	2,000	2,200	1,950	2,150
Philippines	2,500	2,000	2,400	1,500	2,200	2,200
Saudi Arabia	1,166	1,072	1,069	1,100	1,150	1,150
Senegal	860	715	685	700	700	700
South Africa	650	745	733	760	750	750
Syria	230	250	315	350	350	350
United Arab Emirates	350	380	400	420	430	430
Vietnam	300	500	400	500	500	500
Yemen	315	329	330	335	340	340
Others	8,184	7,963	8,789	8,977	8,637	8,637
Subtotal	27,854	26,335	28,316	30,607	29,112	29,512
Unaccounted	1,258	2,318	2,729	3,002	2,023	2,788
United States	651	682	562	635	670	670
World Total	29,763	29,335	31,607	34,244	31,805	32,970

TY=Trade Year, see Endnotes.

Note about dates: 2011/12 is calendar year 2012, 2010/11 is calendar year 2011, and so on.

World Rice Production, Consumption, and Stocks
Local Marketing Years, Thousand Metric Tons

	2007/08	2008/09	2009/10	2010/11	2011/12 Sep	2011/12 Oct
Milled Production						
Bangladesh	28,800	31,000	31,000	32,900	33,000	33,000
Brazil	8,199	8,570	7,929	9,257	8,840	8,840
Burma	10,730	10,150	10,550	10,750	11,000	11,000
Cambodia	4,238	4,520	4,780	5,200	5,200	5,200
China	130,224	134,330	136,570	137,000	139,000	139,000
Egypt	4,385	4,402	4,300	3,100	4,700	4,700
India	96,690	99,180	89,090	95,300	97,000	100,000
Indonesia	37,000	38,310	36,370	37,060	37,300	37,300
Japan	7,930	8,029	7,711	7,720	7,680	7,680
Korea, South	4,408	4,843	4,916	4,295	4,240	4,240
Pakistan	5,700	6,900	6,800	4,700	6,800	6,650
Philippines	10,479	10,755	9,772	10,539	10,900	10,650
Sri Lanka	2,200	2,227	2,650	2,400	2,900	2,900
Thailand	19,800	19,850	20,260	20,262	20,750	21,250
Vietnam	24,375	24,393	24,993	26,057	25,430	25,430
Others	31,208	33,493	35,505	37,243	37,512	37,556
Subtotal	426,366	440,952	433,196	443,783	452,252	455,396
United States	6,288	6,546	7,133	7,593	6,125	5,998
World Total	432,654	447,498	440,329	451,376	458,377	461,394
Consumption and Residual						
Bangladesh	30,747	31,000	31,600	33,800	34,200	34,200
Brazil	8,350	8,400	8,477	8,400	8,500	8,500
Burma	10,249	9,648	9,850	9,850	10,250	10,250
Cambodia	3,788	3,770	3,810	4,220	4,220	4,220
China	127,450	133,000	134,320	135,000	137,000	137,000
Egypt	3,340	4,000	3,670	3,400	3,800	3,800
India	90,466	91,090	85,690	90,000	93,000	94,000
Indonesia	36,350	37,100	38,000	39,000	39,550	39,550
Iran	3,000	3,100	2,950	2,900	3,000	3,000
Japan	8,162	8,326	8,200	8,125	8,250	8,250
Korea, South	4,670	4,788	4,765	4,797	4,800	4,800
Nigeria	3,910	4,100	4,450	4,970	4,650	4,949
Philippines	13,499	13,100	13,125	13,150	13,350	13,175
Thailand	9,600	9,500	10,200	10,500	10,900	10,900
Vietnam	19,400	19,000	19,150	19,300	19,550	19,550
Others	48,989	50,179	52,307	53,770	55,131	55,171
Subtotal	423,744	431,849	433,647	443,414	451,991	453,755
United States	4,042	4,082	4,016	4,358	4,027	4,028
World Total	427,786	435,931	437,663	447,772	456,018	457,783
Ending Stocks						
China	37,762	38,546	40,534	42,572	44,447	44,447
India	13,000	19,000	20,500	23,000	22,300	24,500
Indonesia	5,607	7,057	6,577	6,837	5,987	5,987
Japan	2,556	2,715	2,693	2,788	2,768	2,768
Philippines	4,418	4,673	3,520	2,409	1,509	2,084
Thailand	2,707	4,787	6,100	5,562	8,012	8,012
Vietnam	2,018	1,961	1,470	1,727	1,549	1,407
Others	10,963	11,817	11,621	11,394	10,852	11,042
Subtotal	79,031	90,556	93,015	96,289	97,424	100,247
United States	935	977	1,184	1,514	1,228	1,167
World Total	79,966	91,533	94,199	97,803	98,652	101,414

Note: All data are reported on a milled basis.

Regional Rice Imports, Production, Consumption, and Stocks

Thousand Metric Tons

	2007/08	2008/09	2009/10	2010/11	Sep 2011/12	Oct 2011/12
TY Imports						
North America	1,594	1,614	1,518	1,620	1,710	1,710
Caribbean	1,028	906	989	1,060	1,015	1,015
South America	1,105	1,116	1,377	1,277	1,272	1,272
Other Europe	98	126	126	135	135	135
Former Soviet Union - 12	361	412	401	337	310	310
Middle East	5,519	5,349	5,239	5,645	5,870	5,870
North Africa	275	155	345	390	375	375
Sub-Saharan Africa	7,569	8,175	8,248	8,925	8,610	8,810
East Asia	1,639	1,877	1,961	2,215	2,050	2,050
South Asia	2,208	528	1,013	1,835	890	1,090
Southeast Asia	4,640	4,542	5,562	5,838	5,735	5,735
Others	2,469	2,217	2,099	1,965	1,810	1,810
Total	28,505	27,017	28,878	31,242	29,782	30,182
Production						
North America	6,466	6,702	7,310	7,743	6,258	6,131
Caribbean	796	853	975	963	973	1,017
South America	15,461	16,217	15,444	17,201	16,098	16,098
European Union	1,757	1,620	1,887	1,867	1,899	1,899
Former Soviet Union - 12	988	906	1,095	1,223	1,262	1,262
Middle East	2,318	2,026	2,002	2,061	2,040	2,040
North Africa	4,406	4,423	4,335	3,140	4,740	4,740
Sub-Saharan Africa	8,492	10,268	11,217	12,485	12,797	12,797
East Asia	145,044	150,087	152,218	151,631	153,716	153,716
South Asia	136,570	142,432	132,775	138,475	142,950	145,800
Southeast Asia	109,790	111,279	110,269	113,279	114,211	114,461
Others	566	685	802	1,308	1,433	1,433
Total	432,654	447,498	440,329	451,376	458,377	461,394
Domestic Consumption						
North America	5,130	5,172	5,154	5,518	5,242	5,243
Central America	1,104	1,107	1,125	1,151	1,146	1,146
Caribbean	1,944	1,802	1,905	2,073	1,991	2,031
South America	14,194	14,534	14,697	14,734	14,792	14,792
European Union	3,185	2,925	2,860	2,900	2,830	2,830
Former Soviet Union - 12	1,303	1,242	1,279	1,375	1,382	1,382
Middle East	7,537	7,577	7,515	7,648	7,875	7,875
North Africa	3,636	4,133	4,038	3,790	4,195	4,195
Sub-Saharan Africa	16,907	17,434	19,252	21,254	21,249	21,548
East Asia	143,281	149,584	150,804	151,143	153,445	153,445
South Asia	129,831	131,370	126,348	132,420	136,350	137,350
Southeast Asia	97,272	96,739	98,984	100,864	102,976	102,801
Others	688	564	619	670	705	705
Total	426,012	434,183	434,580	445,540	454,178	455,343
Ending Stocks						
North America	1,128	1,143	1,354	1,664	1,369	1,308
Central America	265	218	250	254	256	256
Caribbean	134	109	129	146	148	152
South America	1,743	2,229	1,856	2,385	2,181	2,181
European Union	1,126	1,020	1,120	987	876	876
Middle East	2,172	1,999	1,654	1,512	1,462	1,462
North Africa	685	557	497	157	577	577
Sub-Saharan Africa	983	974	1,002	1,158	1,186	1,187
East Asia	41,284	42,488	45,038	46,971	48,612	48,612
South Asia	14,306	21,393	22,431	24,871	23,801	26,201
Southeast Asia	15,950	19,249	18,669	17,421	17,882	18,315
Oceania	52	26	44	97	107	107
Others	138	128	155	180	195	180
Total	79,966	91,533	94,199	97,803	98,652	101,414

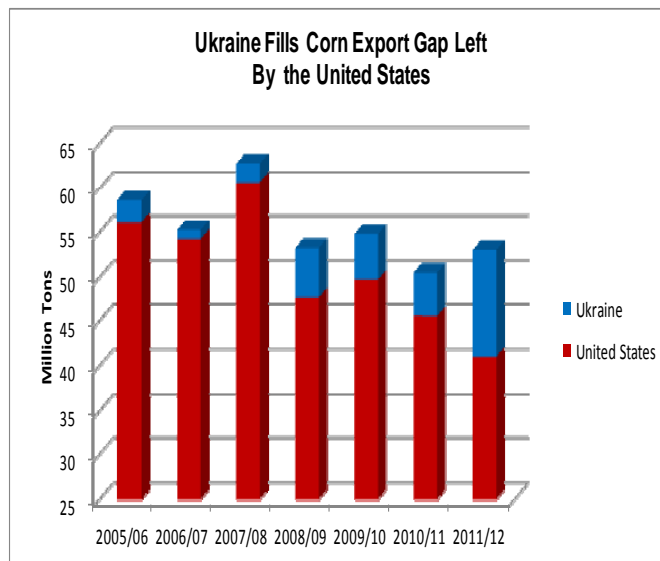
NOTES: Regional definitions appear on last page of this circular. Imports are reported on a trade year basis. All other data are reported using local marketing years.

COARSE GRAINS: WORLD MARKETS AND TRADE

OVERVIEW

Global corn trade for 2011/12 is higher on falling prices and stronger demand. A slightly smaller U.S. crop is more than offset by higher foreign corn production, notably record crops in China and Ukraine. The projected season-average farm price for U.S. corn is lowered based on the stocks build-up, but remains a record.

Ukraine has reacted to high global corn prices by boosting production and exports. With prospects for a crop nearly doubled from last year, the country is poised to more than double exports. Compared to 2008/09, Ukrainian exports have expanded by about 7 million tons, while U.S. exports have dropped by a similar amount. In contrast, Argentine and Brazilian exports (combined) have been relatively constant over the past few years. Ukraine has not only gained market share from the United States and Argentina but also benefited from expanded trade in North Africa and the Middle East.



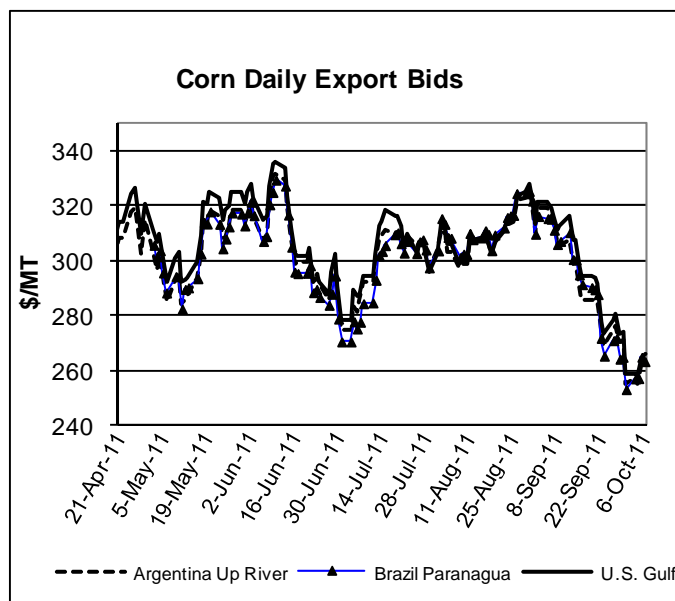
PRICES

U.S. corn export quotes have fallen substantially month-to-month largely based on macroeconomic factors and larger-than-expected September 1 corn and wheat stocks. Prices ended at \$266/ton, \$50/ton lower than at the time of the September WASDE release. Argentine and Brazilian quotes followed suit.

TRADE CHANGES IN 2011/12

Selected Exporters

- **U.S. corn** is cut 1.0 million tons to 41.0 million on greater competition, despite higher carryin stocks.
- **Russian corn** is doubled to 600,000 tons because of larger exportable supplies.



-
- **Ukrainian corn** is boosted sharply by 2.0 million tons to a record 12.0 million with prospects for a record crop.
 - **Argentine barley** is raised 200,000 tons to a record 2.0 million due to less competition from Canada and Australia and additional exportable supplies.
 - **Australian barley** is cut sharply by 700,000 tons to 4.0 million as a result of a smaller crop.
 - **Canadian barley** is lowered 200,000 tons to 700,000 based on another short crop. (Exports for 10/11 are also lowered 200,000 tons to 1.1 million based on a sluggish export pace).
 - **EU barley** is raised 500,000 tons to 2.0 million based on the pace of export licenses.
 - **Russian barley** is raised 200,000 tons to 1.6 million because of a larger crop. (Exports for 10/11 are doubled to 800,000 tons based on strong shipments, particularly to Saudi Arabia).
 - **U.S. sorghum** is cut 200,000 tons to 2.7 million, the lowest in 40 years, on tight supplies and slow sales.

Selected Importers

- **South Korean corn** is raised 500,000 tons to 7.7 million because of recent strong purchases of U.S. corn. (Imports for 2010/11 are raised 200,000 tons to 8.2 million.)
- **Mexican sorghum** is down 200,000 tons to 2.1 million on tight U.S. supplies.

TRADE CHANGES IN 2010/11

Selected Exporters

- **U.S. corn** is cut 500,000 tons to 45.5 million on lower-than-expected shipments in September.
- **Ukrainian corn** exports for 2010/11 are cut 500,000 tons again this month (to 5.0 million) because of slow late-season shipments amid uncertainty surrounding export taxes.

-
- **South African corn** is boosted 300,000 tons to 2.8 million, the highest in 17 years, with strong shipments to South Korea and Mexico.
 - **Ukrainian barley** is raised 300,000 tons to 2.4 million on the reported pace of shipments.
 - **Australian sorghum** is cut 250,000 tons to 700,000 on a smaller crop and slower-than-expected export pace.

Selected Importers

- **Chinese corn** imports are cut by 300,000 tons to 1.0 million because of slow late-season shipments.
- **Saudi barley** is up 400,000 tons to 6.0 million based on large late-season shipments from Russia and Ukraine.

World Coarse Grain Trade
October/September Year, Thousand Metric Tons

	2007/08	2008/09	2009/10	2010/11	2011/12 Sep	2011/12 Oct
TY Exports						
Argentina	17,786	10,241	19,028	18,605	21,805	22,005
Australia	3,895	4,873	4,414	4,860	5,910	5,210
Brazil	8,032	7,187	8,627	11,005	8,505	8,505
Canada	6,379	3,852	3,068	4,325	2,950	2,750
EU-27	4,679	4,338	4,267	5,530	3,255	3,755
India	5,539	2,642	2,072	2,870	2,300	2,300
Russia	1,419	4,945	2,528	850	1,705	2,215
Serbia	132	1,478	1,365	2,015	2,205	2,105
South Africa	1,145	2,159	1,634	2,825	2,340	2,340
Ukraine	5,909	11,380	10,936	7,420	14,405	16,405
Others	5,656	6,020	7,085	4,855	5,380	5,380
Subtotal	60,571	59,115	65,024	65,160	70,760	72,970
United States	68,289	51,558	53,989	49,570	45,150	43,950
World Total	128,860	110,673	119,013	114,730	115,910	116,920
TY Imports						
Algeria	2,433	2,067	2,576	2,800	2,675	2,675
Brazil	1,258	1,497	1,049	905	855	855
Canada	3,187	1,900	2,011	970	1,465	1,465
Chile	1,969	1,317	1,275	1,325	1,475	1,475
China	1,157	1,651	3,777	2,675	3,925	3,925
Colombia	3,603	3,483	4,102	4,155	4,455	4,455
Dominican Republic	1,074	973	1,071	1,050	1,050	1,050
Egypt	4,182	5,093	5,897	5,430	6,055	6,055
EU-27	19,892	2,988	3,012	8,320	4,165	4,165
Indonesia	294	317	1,321	2,500	1,500	1,500
Iran	3,900	5,000	5,100	3,900	3,900	3,900
Israel	1,776	1,295	1,592	1,635	1,410	1,410
Japan	19,210	19,611	19,198	18,245	19,135	19,135
Korea, South	9,358	7,248	8,509	8,260	7,260	7,760
Malaysia	3,181	2,447	3,107	2,700	3,300	3,300
Mexico	11,011	10,465	10,914	10,525	11,625	11,425
Morocco	2,180	1,833	2,202	2,100	2,200	2,200
Peru	1,592	1,520	1,886	1,985	1,600	1,700
Saudi Arabia	9,968	9,186	9,076	7,905	9,005	9,005
Syria	2,561	2,834	2,274	1,900	2,500	2,500
Taiwan	4,684	4,658	4,663	4,450	4,750	4,550
Thailand	425	900	500	600	800	800
Tunisia	1,182	875	1,202	1,000	850	850
Venezuela	1,103	1,340	2,198	1,200	1,600	1,600
Vietnam	700	1,250	1,600	1,200	1,300	1,300
Others	15,024	13,921	13,602	13,148	12,061	12,161
Subtotal	126,904	105,669	113,714	110,883	110,916	111,216
Unaccounted	-1,654	2,197	3,024	1,557	2,769	3,479
United States	3,610	2,807	2,275	2,290	2,225	2,225
World Total	128,860	110,673	119,013	114,730	115,910	116,920

TY=Trade Year, see Endnotes.

World Coarse Grains Production, Consumption, and Stocks
Local Marketing Years, Thousand Metric Tons

	2007/08	2008/09	2009/10	2010/11	2011/12 Sep	2011/12 Oct
Production						
Argentina	27,118	19,634	28,531	30,498	35,010	35,210
Australia	12,895	12,272	11,096	13,348	13,377	12,377
Brazil	60,520	53,486	58,412	59,929	63,333	63,333
Canada	27,841	27,184	22,477	22,263	21,581	21,227
China	158,863	172,424	169,604	183,405	184,310	188,310
Ethiopia	8,302	9,034	8,046	8,925	8,925	8,925
EU-27	136,580	162,102	155,049	139,567	143,639	143,554
India	40,630	39,550	33,890	42,000	40,370	40,370
Indonesia	8,500	8,700	6,900	6,800	8,100	8,100
Mexico	30,577	32,252	27,272	27,869	31,729	31,729
Nigeria	24,000	26,670	27,959	28,100	28,100	28,100
Russia	29,171	40,881	31,843	16,416	29,700	31,200
South Africa	13,690	13,084	13,881	12,248	12,993	12,993
Turkey	9,445	10,408	11,176	10,095	10,695	10,695
Ukraine	14,592	26,275	24,143	21,442	28,400	31,400
Others	128,212	131,525	137,114	145,836	142,628	142,428
Subtotal	730,936	785,481	767,393	768,741	802,890	809,951
United States	349,861	325,867	348,755	330,230	328,305	326,324
World Total	1,080,797	1,111,348	1,116,148	1,098,971	1,131,195	1,136,275
Domestic Consumption						
Argentina	9,367	8,768	10,054	11,033	11,625	11,425
Brazil	44,605	48,191	49,714	52,258	54,798	54,798
Canada	24,023	22,892	22,216	20,874	20,225	20,050
China	157,783	161,100	172,975	183,990	190,840	194,840
Egypt	11,477	12,162	13,072	13,195	11,500	11,500
EU-27	154,855	151,855	150,280	151,855	146,480	146,330
India	35,500	36,500	32,000	38,350	38,600	38,600
Japan	19,460	19,965	19,645	18,595	19,365	19,365
Mexico	40,235	42,060	40,885	38,445	42,120	41,920
Nigeria	24,000	26,550	27,750	28,150	28,050	28,050
Russia	28,617	33,011	30,440	18,156	27,900	27,900
Saudi Arabia	9,480	9,475	9,700	9,000	9,600	9,600
South Africa	10,143	10,468	10,818	10,973	11,358	11,358
Turkey	10,565	10,700	10,870	10,895	11,350	11,350
Ukraine	11,934	13,696	12,964	13,792	13,850	14,200
Others	191,039	196,130	198,602	208,169	210,358	210,658
Subtotal	783,436	805,600	819,262	828,243	851,196	855,507
United States	274,533	275,978	295,337	297,932	292,943	292,974
World Total	1,057,969	1,081,578	1,114,599	1,126,175	1,144,139	1,148,481
Ending Stocks						
Brazil	12,703	12,450	10,287	10,358	11,243	11,243
Canada	4,010	6,326	5,650	3,529	3,294	3,421
China	39,404	52,158	52,359	54,284	51,481	51,414
EU-27	12,726	20,844	25,665	15,717	13,791	13,351
Russia	1,694	4,878	3,222	1,933	2,180	3,268
South Africa	3,266	4,327	5,376	4,256	3,951	3,951
Ukraine	1,659	2,374	2,209	2,059	2,457	3,169
Others	43,549	43,423	42,488	43,746	41,898	41,668
Subtotal	119,011	146,780	147,256	135,882	130,295	131,485
United States	45,059	47,060	48,133	32,303	19,663	24,494
World Total	164,070	193,840	195,389	168,185	149,958	155,979

Regional Coarse Grains Imports, Production, Consumption, and Stocks

Thousand Metric Tons

	2007/08	2008/09	2009/10	2010/11	Sep 2011/12	Oct 2011/12
TY Imports						
North America	17,808	15,172	15,200	13,785	15,315	15,115
Central America	2,681	2,491	2,537	2,755	2,950	2,950
Caribbean	2,239	2,011	2,139	2,200	2,210	2,210
South America	10,625	10,072	11,473	10,925	10,895	10,995
European Union	19,892	2,988	3,012	8,320	4,165	4,165
Former Soviet Union - 12	1,062	664	451	1,200	585	585
Middle East	21,810	21,247	21,318	18,147	19,650	19,650
North Africa	10,757	10,592	13,115	12,155	12,530	12,530
Sub-Saharan Africa	3,009	3,735	2,826	1,790	1,780	1,780
East Asia	34,662	33,349	36,276	33,760	35,200	35,500
Southeast Asia	4,746	5,405	6,725	7,115	7,015	7,115
Others	1,223	750	917	1,021	846	846
Total	130,514	108,476	115,989	113,173	113,141	113,441
Production						
North America	408,279	385,303	398,504	380,362	381,615	379,280
South America	99,917	84,977	98,905	103,212	111,659	111,859
European Union	136,580	162,102	155,049	139,567	143,639	143,554
Other Europe	9,370	12,357	11,800	12,190	12,330	12,030
Former Soviet Union - 12	54,154	79,162	68,179	47,690	70,145	74,845
Middle East	18,594	15,827	18,829	18,499	18,391	18,391
North Africa	9,894	10,219	14,891	12,359	9,932	9,932
Sub-Saharan Africa	90,972	96,200	96,905	105,761	103,114	103,114
East Asia	161,053	174,593	171,474	185,490	186,421	190,421
South Asia	47,105	45,688	40,331	48,358	46,653	46,653
Southeast Asia	26,882	27,710	25,386	27,186	28,970	28,870
Oceania	13,542	12,919	11,743	13,995	14,024	13,024
Others	4,455	4,291	4,152	4,302	4,302	4,302
Total	1,080,797	1,111,348	1,116,148	1,098,971	1,131,195	1,136,275
Domestic Consumption						
North America	338,791	340,930	358,438	357,251	355,288	354,944
South America	73,672	76,315	79,732	84,188	87,803	87,703
European Union	154,855	151,855	150,280	151,855	146,480	146,330
Other Europe	10,423	10,895	10,757	10,876	10,911	10,811
Former Soviet Union - 12	50,587	58,613	55,180	41,924	53,495	53,845
Middle East	38,192	37,833	38,469	37,894	38,984	38,984
North Africa	21,142	21,187	24,679	25,181	23,685	23,685
Sub-Saharan Africa	88,683	96,224	95,792	103,721	102,429	102,429
East Asia	192,632	195,849	207,623	217,454	224,249	228,549
South Asia	42,183	42,673	38,599	44,838	45,013	45,013
Southeast Asia	29,476	30,277	31,158	32,765	34,810	34,810
Oceania	7,666	7,897	7,727	8,477	8,377	8,377
Others	9,314	8,953	8,888	9,238	9,438	9,438
Total	1,057,616	1,079,501	1,107,322	1,125,662	1,140,962	1,144,918
Ending Stocks						
North America	53,809	58,625	55,724	37,597	25,856	30,814
South America	19,618	16,674	15,073	15,940	17,281	17,211
European Union	12,726	20,844	25,665	15,717	13,791	13,351
Other Europe	1,340	1,517	1,653	1,657	1,478	1,377
Former Soviet Union - 12	4,678	8,841	7,273	5,527	6,287	8,287
Middle East	8,663	8,496	9,390	8,354	7,246	7,246
North Africa	2,443	2,743	5,401	4,835	3,662	3,662
Sub-Saharan Africa	7,775	9,545	10,735	11,147	10,477	10,477
East Asia	43,975	55,897	55,819	57,450	54,624	54,557
South Asia	1,763	2,028	1,612	2,399	1,864	1,864
Southeast Asia	3,475	4,446	3,329	3,687	3,617	3,617
Oceania	2,737	3,342	2,926	3,097	2,993	2,734
Others	1,068	842	789	778	782	782
Total	164,070	193,840	195,389	168,185	149,958	155,979

NOTES: Regional definitions appear on last page of this circular. Imports are reported on a trade year basis. All other data are reported using local marketing years.

World Corn Trade
October/September Year, Thousand Metric Tons

	2007/08	2008/09	2009/10	2010/11	2011/12 Sep	2011/12 Oct
TY Exports						
Argentina	15,676	8,458	16,971	15,000	18,000	18,000
Brazil	7,883	7,178	8,623	11,000	8,500	8,500
Canada	944	366	184	1,700	500	500
EU-27	591	1,743	1,519	1,000	1,500	1,500
India	5,077	2,551	1,917	2,800	2,200	2,200
Paraguay	1,461	1,862	1,388	1,300	1,500	1,500
Russia	49	1,331	427	35	300	600
Serbia	128	1,467	1,343	2,000	2,200	2,100
South Africa	1,124	2,111	1,586	2,800	2,300	2,300
Ukraine	2,074	5,497	5,072	5,000	10,000	12,000
Others	2,616	3,641	4,199	2,750	3,105	3,105
Subtotal	37,623	36,205	43,229	45,385	50,105	52,305
United States	60,663	47,758	49,721	45,500	42,000	41,000
World Total	98,286	83,963	92,950	90,885	92,105	93,305
TY Imports						
Algeria	2,166	1,903	2,569	2,700	2,600	2,600
Canada	3,117	1,844	1,961	900	1,400	1,400
China	41	47	1,296	1,000	2,000	2,000
Colombia	3,267	3,068	3,651	3,600	3,900	3,900
Costa Rica	674	586	626	700	700	700
Cuba	811	708	736	800	800	800
Dominican Republic	1,074	973	1,071	1,050	1,050	1,050
Egypt	4,151	5,031	5,832	5,400	6,000	6,000
EU-27	14,016	2,754	2,931	7,300	4,000	4,000
Guatemala	617	673	651	650	700	700
Indonesia	294	317	1,321	2,500	1,500	1,500
Iran	2,900	3,600	4,300	3,500	3,500	3,500
Israel	1,374	846	1,053	1,250	1,100	1,100
Japan	16,614	16,533	15,979	15,500	16,100	16,100
Korea, South	9,311	7,188	8,461	8,200	7,200	7,700
Malaysia	3,181	2,447	3,107	2,700	3,300	3,300
Mexico	9,556	7,764	8,298	8,000	9,200	9,200
Morocco	1,858	1,566	1,802	1,800	1,900	1,900
Peru	1,469	1,429	1,782	1,900	1,500	1,600
Saudi Arabia	1,961	1,482	1,872	1,900	2,000	2,000
Syria	1,661	1,784	2,024	1,700	2,000	2,000
Taiwan	4,527	4,532	4,521	4,300	4,600	4,400
Thailand	425	900	500	600	800	800
Venezuela	1,103	1,336	2,198	1,200	1,600	1,600
Vietnam	700	1,250	1,600	1,200	1,300	1,300
Others	12,884	11,620	10,332	9,005	8,955	9,055
Subtotal	99,752	82,181	90,474	89,355	89,705	90,205
Unaccounted	-1,967	1,445	2,239	830	2,000	2,700
United States	501	337	237	700	400	400
World Total	98,286	83,963	92,950	90,885	92,105	93,305

TY=Trade Year, see Endnotes.

The large, negative Unaccounted in 2007/08 arises largely from timing differences between declared exports and Japan's and Korea's declared imports.

World Corn Production, Consumption, and Stocks
Local Marketing Years, Thousand Metric Tons

	2007/08	2008/09	2009/10	2010/11	2011/12 Sep	2011/12 Oct
Production						
Argentina	22,017	15,500	23,300	22,500	27,500	27,500
Brazil	58,600	51,000	56,100	57,500	61,000	61,000
Canada	11,649	10,592	9,561	11,714	10,000	10,000
China	152,300	165,914	163,974	177,245	178,000	182,000
EU-27	47,555	62,321	56,948	55,902	61,043	60,993
India	18,960	19,730	16,720	21,280	21,000	21,000
Indonesia	8,500	8,700	6,900	6,800	8,100	8,100
Mexico	23,600	24,226	20,374	20,600	24,000	24,000
Nigeria	6,500	7,970	8,759	8,700	8,700	8,700
Philippines	7,277	6,853	6,231	7,271	7,100	7,000
Russia	3,798	6,682	3,963	3,075	5,500	6,000
Serbia	4,054	6,130	6,400	6,800	7,000	6,700
South Africa	13,164	12,567	13,420	11,800	12,500	12,500
Ukraine	7,421	11,447	10,486	11,919	18,000	21,000
Vietnam	4,600	4,432	4,607	5,000	5,400	5,400
Others	73,685	78,142	79,125	84,020	82,391	82,391
Subtotal	463,680	492,206	486,868	512,126	537,234	544,284
United States	331,177	307,142	332,549	316,165	317,440	315,810
World Total	794,857	799,348	819,417	828,291	854,674	860,094
Total Consumption						
Argentina	6,800	6,400	6,900	7,100	7,600	7,600
Brazil	42,500	45,500	47,000	49,500	52,000	52,000
Canada	13,769	11,687	11,606	11,394	11,000	11,000
China	150,000	153,000	165,000	176,000	182,500	186,500
Egypt	10,400	11,100	12,000	12,100	10,400	10,400
EU-27	64,000	61,600	59,500	62,300	62,500	62,500
India	14,200	17,000	15,100	18,300	18,900	18,900
Indonesia	8,500	8,900	8,800	9,200	9,500	9,500
Japan	16,600	16,700	16,300	15,600	16,100	16,100
Korea, South	8,638	7,894	8,394	8,300	7,300	7,800
Mexico	32,000	32,400	30,200	28,500	32,100	32,100
Nigeria	6,550	7,900	8,600	8,800	8,700	8,700
Philippines	7,150	7,300	6,500	7,200	7,300	7,300
South Africa	9,600	9,900	10,300	10,400	10,800	10,800
Ukraine	5,750	5,850	5,700	6,550	7,400	7,750
Others	115,342	119,717	122,675	126,745	132,145	131,945
Subtotal	511,966	524,400	541,100	557,457	579,376	584,456
United States	261,632	259,272	281,590	284,961	282,206	282,207
World Total	773,598	783,672	822,690	842,418	861,582	866,663
Ending Stocks						
Argentina	2,190	976	892	1,302	1,712	1,712
Brazil	12,579	12,084	9,989	9,989	10,989	10,989
China	38,394	51,183	51,302	53,447	50,814	50,747
EU-27	4,417	6,149	5,009	4,911	5,954	5,904
Mexico	4,131	3,559	1,389	1,389	2,389	2,389
South Africa	3,090	4,113	5,169	4,094	3,819	3,819
Ukraine	825	937	672	1,051	1,611	2,311
Others	24,600	25,652	26,082	24,915	23,039	23,316
Subtotal	90,226	104,653	100,504	101,098	100,327	101,187
United States	41,255	42,504	43,380	28,659	17,063	22,001
World Total	131,481	147,157	143,884	129,757	117,390	123,188

Regional Corn Imports, Production, Consumption, and Stocks

Thousand Metric Tons

	2007/08	2008/09	2009/10	2010/11	Sep 2011/12	Oct 2011/12
TY Imports						
North America	13,174	9,945	10,496	9,600	11,000	11,000
Central America	2,678	2,491	2,537	2,750	2,950	2,950
South America	9,412	8,565	9,834	8,900	8,930	9,030
European Union	14,016	2,754	2,931	7,300	4,000	4,000
Former Soviet Union - 12	651	393	254	375	200	200
Middle East	10,116	9,462	11,215	10,025	10,375	10,375
North Africa	9,593	9,574	11,725	10,925	11,700	11,700
Sub-Saharan Africa	2,174	2,915	1,909	1,115	1,135	1,135
East Asia	30,746	28,481	30,386	29,130	30,030	30,330
Southeast Asia	4,715	5,391	6,709	7,105	7,005	7,105
Caribbean	2,239	2,011	2,139	2,200	2,210	2,210
Others	739	536	576	630	570	570
Total	100,253	82,518	90,711	90,055	90,105	90,605
Production						
North America	366,426	341,960	362,484	348,479	351,440	349,810
South America	90,887	76,109	89,367	90,303	99,485	99,485
European Union	47,555	62,321	56,948	55,902	61,043	60,993
Other Europe	7,239	9,965	9,685	10,135	10,235	9,935
Former Soviet Union - 12	13,908	21,946	18,041	18,556	27,600	31,100
Middle East	6,062	6,529	6,163	5,806	5,798	5,798
North Africa	6,376	6,847	6,482	6,702	4,002	4,002
Sub-Saharan Africa	47,156	49,421	53,646	55,842	56,263	56,263
East Asia	154,009	167,580	165,379	178,882	179,651	183,651
South Asia	24,090	24,780	21,840	26,350	26,070	26,070
Central America	3,285	3,222	3,041	3,188	3,188	3,188
Southeast Asia	26,659	27,485	25,162	26,966	28,750	28,650
Others	1,205	1,183	1,179	1,180	1,149	1,149
Total	794,857	799,348	819,417	828,291	854,674	860,094
Domestic Consumption						
North America	307,401	303,359	323,396	324,855	325,306	325,307
South America	66,112	67,854	70,539	73,690	77,090	77,190
European Union	64,000	61,600	59,500	62,300	62,500	62,500
Other Europe	7,766	8,351	8,354	8,525	8,585	8,485
Former Soviet Union - 12	12,970	14,905	13,115	13,310	16,460	16,810
Middle East	15,775	15,835	16,625	16,686	17,005	17,005
North Africa	15,750	16,125	17,650	18,000	16,400	16,400
Sub-Saharan Africa	44,068	48,948	50,950	54,284	54,805	54,805
East Asia	181,503	184,015	195,823	205,980	212,155	216,455
South Asia	19,531	22,050	20,320	23,470	24,070	24,070
Southeast Asia	29,249	30,043	30,943	32,550	34,600	34,600
Central America	5,900	5,800	5,700	5,925	6,125	6,125
Others	3,406	3,235	3,250	3,375	3,350	3,350
Total	773,431	782,120	816,165	842,950	858,451	863,102
Ending Stocks						
North America	46,843	47,896	46,527	31,326	20,524	25,568
South America	18,152	15,304	13,983	14,101	15,691	15,671
European Union	4,417	6,149	5,009	4,911	5,954	5,904
Other Europe	1,026	1,184	1,369	1,339	1,159	1,059
Former Soviet Union - 12	1,180	1,750	1,356	1,807	2,552	3,542
Middle East	4,041	4,029	4,513	3,618	2,771	2,771
North Africa	1,583	2,202	2,394	2,111	1,403	1,403
Sub-Saharan Africa	6,027	7,591	9,573	8,931	8,514	8,514
East Asia	42,373	54,297	54,088	56,020	53,413	53,346
South Asia	1,276	1,436	930	1,115	1,010	1,010
Southeast Asia	3,475	4,446	3,329	3,687	3,617	3,617
Central America	765	613	498	486	484	484
Others	323	260	315	305	298	299
Total	131,481	147,157	143,884	129,757	117,390	123,188

NOTES: Regional definitions appear on last page of this circular. Imports are reported on a trade year basis. All other data are reported using local marketing years.

World Barley Trade
October/September Year, Thousand Metric Tons

	2007/08	2008/09	2009/10	2010/11	2011/12 Sep	2011/12 Oct
TY Exports						
Argentina	937	871	549	1,600	1,800	2,000
Australia	3,377	3,278	3,846	4,000	4,700	4,000
Canada	2,947	1,618	1,203	1,100	900	700
China	81	17	13	15	15	15
Croatia	3	4	7	5	5	5
Egypt	67	7	14	5	10	10
EU-27	3,888	2,374	2,389	4,300	1,500	2,000
India	371	37	31	20	50	50
Kazakhstan	806	314	354	200	250	250
Kenya	2	1	2	5	5	5
Moldova	9	31	43	25	25	25
Russia	1,277	3,598	2,086	800	1,400	1,600
Serbia	4	11	22	15	5	5
Turkey	0	3	801	50	150	150
Ukraine	3,814	5,871	5,752	2,400	4,400	4,400
Others	110	10	13	15	0	0
Subtotal	17,693	18,045	17,125	14,555	15,215	15,215
United States	901	158	152	220	200	200
World Total	18,594	18,203	17,277	14,775	15,415	15,415
TY Imports						
Brazil	285	403	346	400	350	350
China	1,091	1,551	2,341	1,600	1,800	1,800
Colombia	256	211	237	250	250	250
Iran	1,000	1,400	800	400	400	400
Israel	251	367	491	250	250	250
Japan	1,361	1,346	1,411	1,300	1,300	1,300
Jordan	528	514	432	500	400	400
Kuwait	254	252	283	200	250	250
Libya	166	296	582	350	200	200
Morocco	313	263	256	200	200	200
Russia	179	39	13	400	200	200
Saudi Arabia	8,000	7,700	7,200	6,000	7,000	7,000
Syria	900	1,050	250	200	500	500
Tunisia	378	229	336	450	200	200
United Arab Emirates	252	131	299	250	150	150
Others	2,256	1,552	1,191	1,625	1,290	1,290
Subtotal	17,470	17,304	16,468	14,375	14,740	14,740
Unaccounted	412	327	507	250	475	475
United States	712	572	302	150	200	200
World Total	18,594	18,203	17,277	14,775	15,415	15,415

TY=Trade Year, see Endnotes.

World Barley Production, Consumption, and Stocks
Local Marketing Years, Thousand Metric Tons

	2007/08	2008/09	2009/10	2010/11	2011/12 Sep	2011/12 Oct
Production						
Algeria	950	560	2,400	1,500	1,500	1,500
Argentina	1,600	2,110	1,356	2,950	3,100	3,300
Australia	7,160	7,997	7,909	9,300	9,000	8,200
Belarus	1,700	2,200	1,650	1,400	1,800	1,800
Canada	10,984	11,781	9,517	7,605	8,275	7,900
China	2,785	2,823	2,318	2,500	2,600	2,600
Ethiopia	1,355	1,484	1,569	1,400	1,400	1,400
EU-27	57,545	65,509	62,149	53,015	51,811	51,866
India	1,330	1,200	1,690	1,350	1,570	1,570
Iran	3,104	1,547	3,446	3,500	3,000	3,000
Kazakhstan	2,441	2,059	2,519	1,300	2,100	2,300
Morocco	763	1,272	3,800	2,570	2,400	2,400
Russia	15,663	23,148	17,881	8,350	15,500	16,500
Turkey	6,000	5,700	6,500	5,900	6,500	6,500
Ukraine	5,981	12,612	11,833	8,484	9,000	9,000
Others	9,103	7,988	9,002	9,023	9,363	9,363
Subtotal	128,464	149,990	145,539	120,147	128,919	129,199
United States	4,575	5,230	4,949	3,925	3,663	3,376
World Total	133,039	155,220	150,488	124,072	132,582	132,575
Total Consumption						
Algeria	1,100	1,100	1,350	1,500	1,600	1,600
Australia	3,100	4,000	4,500	4,700	4,600	4,600
Belarus	1,750	2,300	1,700	1,550	1,800	1,800
Canada	7,916	9,065	8,504	7,584	7,400	7,225
China	3,900	4,200	4,400	4,300	4,500	4,500
EU-27	54,200	57,000	56,500	56,400	53,000	52,500
India	1,000	1,000	1,500	1,350	1,500	1,500
Iran	3,600	3,550	3,700	3,700	3,600	3,600
Japan	1,600	1,550	1,550	1,550	1,525	1,525
Kazakhstan	1,700	1,850	2,000	1,235	1,875	1,875
Morocco	1,800	1,700	2,900	3,050	3,150	3,150
Russia	15,050	17,100	16,650	9,500	14,300	14,300
Saudi Arabia	7,430	7,425	7,425	6,625	7,125	7,125
Turkey	6,100	5,700	5,900	6,000	6,450	6,450
Ukraine	5,000	5,900	5,600	6,000	5,000	5,000
Others	14,699	15,172	15,307	15,176	15,078	15,078
Subtotal	129,702	139,248	139,737	130,827	132,703	132,028
United States	4,324	5,127	4,604	4,537	4,355	4,137
World Total	134,026	144,375	144,341	135,364	137,058	136,165
Ending Stocks						
Algeria	333	184	1,258	1,338	1,388	1,388
Australia	1,662	2,425	1,919	2,319	2,019	1,919
Canada	1,568	2,843	2,583	1,441	1,466	1,466
EU-27	5,705	10,916	15,532	7,447	4,908	4,913
Iran	725	622	1,268	1,468	1,268	1,268
Russia	1,153	3,813	2,395	1,386	1,378	2,186
Saudi Arabia	2,428	2,203	2,078	1,653	1,528	1,528
Others	5,307	6,273	7,810	7,069	6,413	6,624
Subtotal	18,881	29,279	34,843	24,121	20,368	21,292
United States	1,485	1,932	2,515	1,945	1,254	1,184
World Total	20,366	31,211	37,358	26,066	21,622	22,476

Regional Barley Imports, Production, Consumption, and Stocks

Thousand Metric Tons

	2007/08	2008/09	2009/10	2010/11	Sep 2011/12	Oct 2011/12
TY Imports						
North America	933	737	373	250	300	300
South America	751	810	772	915	775	775
European Union	519	156	66	200	100	100
Other Europe	207	82	153	235	135	135
Former Soviet Union - 12	404	269	195	675	385	385
Middle East	11,506	11,681	10,046	7,970	9,200	9,200
North Africa	1,152	973	1,223	1,125	725	725
Sub-Saharan Africa	154	120	54	85	60	60
East Asia	2,550	3,000	3,861	3,025	3,225	3,225
South Asia	6	48	10	30	30	30
Oceania	0	0	17	15	5	5
Total	18,182	17,876	16,770	14,525	14,940	14,940
Production						
North America	16,212	17,822	14,966	12,311	12,719	12,057
South America	2,697	3,156	2,443	4,131	4,311	4,511
European Union	57,545	65,509	62,149	53,015	51,811	51,866
Other Europe	1,412	1,613	1,440	1,380	1,420	1,420
Former Soviet Union - 12	27,112	41,639	35,500	20,959	29,900	31,100
Middle East	11,030	8,004	11,320	11,370	11,270	11,270
North Africa	2,493	2,347	7,324	4,572	4,845	4,845
Sub-Saharan Africa	1,733	1,826	1,950	1,755	1,770	1,770
East Asia	3,240	3,300	2,757	2,922	3,034	3,034
South Asia	2,005	1,607	2,330	1,957	2,102	2,102
Oceania	7,560	8,397	8,309	9,700	9,400	8,600
Total	133,039	155,220	150,488	124,072	132,582	132,575
Domestic Consumption						
North America	13,040	15,042	13,858	12,871	12,555	12,162
South America	2,562	2,703	2,933	3,180	3,255	3,255
European Union	54,200	57,000	56,500	56,400	53,000	52,500
Other Europe	1,640	1,705	1,592	1,565	1,540	1,540
Former Soviet Union - 12	24,875	28,844	27,590	19,831	24,515	24,515
Middle East	20,777	20,556	20,403	19,738	20,581	20,581
North Africa	4,352	3,987	5,847	5,970	6,100	6,100
Sub-Saharan Africa	1,789	1,955	1,978	1,860	1,845	1,845
East Asia	5,854	6,109	6,326	6,230	6,405	6,405
South Asia	1,680	1,438	2,163	1,987	2,062	2,062
Oceania	3,500	4,400	4,900	5,125	5,000	5,000
Total	134,269	143,739	144,090	134,757	136,858	135,965
Ending Stocks						
North America	3,281	5,112	5,231	3,600	2,965	2,895
South America	460	766	601	839	770	770
European Union	5,705	10,916	15,532	7,447	4,908	4,913
Other Europe	279	279	238	272	278	277
Former Soviet Union - 12	2,575	5,533	4,308	2,837	2,812	3,832
Middle East	4,507	4,389	4,837	4,691	4,430	4,430
North Africa	818	511	2,963	2,680	2,215	2,215
Sub-Saharan Africa	214	204	233	208	188	188
East Asia	775	949	1,228	930	769	769
South Asia	54	91	228	210	230	230
Oceania	1,698	2,461	1,959	2,352	2,057	1,957
Total	20,366	31,211	37,358	26,066	21,622	22,476

NOTES: Regional definitions appear on last page of this circular. Imports are reported on a trade year basis. All other data are reported using local marketing years.

World Sorghum Trade
October/September Year, Thousand Metric Tons

	2007/08	2008/09	2009/10	2010/11	2011/12 Sep	2011/12 Oct
TY Exports						
Argentina	1,172	907	1,507	2,000	2,000	2,000
Australia	340	1,360	350	700	1,000	1,000
China	223	32	41	50	50	50
India	91	54	124	50	50	50
Kenya	1	0	39	15	25	25
Nigeria	50	50	50	50	50	50
South Africa	21	48	48	25	40	40
Others	277	45	73	50	55	55
Subtotal	2,175	2,496	2,232	2,940	3,270	3,270
United States	6,664	3,598	4,074	3,800	2,900	2,700
World Total	8,839	6,094	6,306	6,740	6,170	5,970
TY Imports						
Chile	268	404	568	750	800	800
China	12	14	83	25	75	75
Colombia	66	202	212	300	300	300
Ethiopia	30	140	125	100	100	100
EU-27	5,267	66	7	800	50	50
Japan	1,084	1,629	1,649	1,300	1,600	1,600
Mexico	1,156	2,496	2,528	2,400	2,300	2,100
Morocco	9	4	144	100	100	100
Sudan	300	300	400	300	300	300
Taiwan	83	72	71	75	75	75
Others	784	430	526	382	320	320
Subtotal	9,059	5,757	6,313	6,532	6,020	5,820
Unaccounted	-221	334	-7	208	150	150
United States	1	3	0	0	0	0
World Total	8,839	6,094	6,306	6,740	6,170	5,970

TY=Trade Year, see Endnotes.

World Sorghum Production, Consumption, and Stocks
Local Marketing Years, Thousand Metric Tons

	2007/08	2008/09	2009/10	2010/11	2011/12 Sep	2011/12 Oct
Production						
Argentina	2,937	1,660	3,629	4,400	4,000	4,000
Australia	3,790	2,690	1,600	2,140	2,400	2,200
Brazil	1,441	2,004	1,854	1,794	1,700	1,700
Burkina	1,507	1,875	1,522	1,950	1,800	1,800
China	1,920	1,837	1,677	1,800	1,850	1,850
Egypt	900	900	900	900	900	900
Ethiopia	2,659	2,619	2,084	2,600	2,600	2,600
EU-27	525	517	621	634	762	762
India	7,930	7,250	6,700	6,740	6,800	6,800
Mali	901	930	980	925	925	925
Mexico	6,200	7,067	6,250	6,340	6,800	6,800
Niger	930	1,214	739	1,500	900	900
Nigeria	10,000	11,000	11,500	11,700	11,700	11,700
Sudan	4,500	4,192	2,630	5,160	4,200	4,200
Tanzania	900	700	710	850	850	850
Others	6,233	6,393	6,139	6,644	6,409	6,409
Subtotal	53,273	52,848	49,535	56,077	54,596	54,396
United States	12,636	11,998	9,728	8,773	6,200	6,193
World Total	65,909	64,846	59,263	64,850	60,796	60,589
Total Consumption						
Argentina	1,200	1,100	1,900	2,100	2,400	2,200
Australia	2,205	1,805	1,205	1,405	1,405	1,405
Brazil	1,375	1,875	1,875	1,775	1,775	1,775
Burkina	1,507	1,700	1,697	1,800	1,800	1,800
China	2,000	2,000	1,900	1,800	1,900	1,900
Egypt	900	950	900	900	900	900
Ethiopia	2,600	2,700	2,400	2,500	2,700	2,700
India	7,900	7,200	6,600	6,700	6,800	6,800
Japan	1,100	1,600	1,650	1,300	1,600	1,600
Mali	901	930	980	925	925	925
Mexico	7,200	8,600	9,700	9,000	9,000	8,800
Niger	1,000	1,200	900	1,300	1,100	1,100
Nigeria	9,950	10,950	11,450	11,650	11,650	11,650
Sudan	5,000	4,500	3,400	5,000	4,500	4,500
Tanzania	900	700	750	800	900	900
Others	13,653	8,426	8,069	9,617	8,713	8,713
Subtotal	59,442	56,043	55,739	58,901	57,812	57,358
United States	5,081	8,319	5,859	5,315	3,429	3,683
World Total	64,523	64,362	61,598	64,216	61,241	61,041
Ending Stocks						
Argentina	746	194	152	552	502	452
Australia	791	676	771	506	661	501
China	637	456	275	250	225	225
Ethiopia	179	238	47	247	247	247
Mexico	373	1,336	414	154	254	254
Nigeria	200	200	200	200	200	200
Sudan	697	684	309	764	759	759
Others	1,084	1,357	980	1,460	1,084	1,073
Subtotal	4,707	5,141	3,148	4,133	3,932	3,711
United States	1,340	1,390	1,048	697	654	667
World Total	6,047	6,531	4,196	4,830	4,586	4,378

Regional Sorghum Imports, Production, Consumption, and Stocks

Thousand Metric Tons

	2007/08	2008/09	2009/10	2010/11	Sep 2011/12	Oct 2011/12
TY Imports						
North America	1,157	2,499	2,528	2,400	2,300	2,100
South America	432	665	848	1,085	1,165	1,165
European Union	5,267	66	7	800	50	50
Other Europe	142	0	17	25	20	20
Middle East	156	81	48	132	55	55
North Africa	11	45	166	105	105	105
Sub-Saharan Africa	663	667	842	565	560	560
East Asia	1,196	1,719	1,806	1,405	1,755	1,755
Southeast Asia	31	14	16	10	10	10
Others	5	4	35	5	0	0
Total	9,060	5,760	6,313	6,532	6,020	5,820
Production						
North America	18,836	19,065	15,978	15,113	13,000	12,993
Central America	396	298	326	329	329	329
Caribbean	128	128	128	128	128	128
South America	5,102	4,719	6,153	7,126	6,522	6,522
European Union	525	517	621	634	762	762
Middle East	859	654	602	640	640	640
North Africa	915	915	915	915	915	915
Sub-Saharan Africa	25,280	26,553	24,344	29,070	27,235	27,235
East Asia	1,940	1,857	1,697	1,820	1,870	1,870
South Asia	8,081	7,395	6,845	6,885	6,945	6,945
Southeast Asia	57	55	54	50	50	50
Oceania	3,790	2,690	1,600	2,140	2,400	2,200
Others	0	0	0	0	0	0
Total	65,909	64,846	59,263	64,850	60,796	60,589
Domestic Consumption						
North America	12,281	16,919	15,559	14,315	12,429	12,483
Central America	375	315	325	325	325	325
Caribbean	128	128	128	128	128	128
South America	3,793	4,766	5,318	5,769	6,152	5,952
European Union	6,305	905	630	1,555	830	830
Middle East	970	749	694	777	700	700
North Africa	924	965	1,012	1,040	1,015	1,015
Sub-Saharan Africa	26,013	26,891	25,879	28,458	27,908	27,908
East Asia	3,222	3,699	3,643	3,200	3,600	3,600
South Asia	8,053	7,349	6,780	6,845	6,945	6,945
Southeast Asia	61	64	45	45	40	40
Oceania	2,205	1,805	1,205	1,405	1,405	1,405
Others	142	0	17	25	20	20
Total	64,472	64,555	61,235	63,887	61,497	61,351
Ending Stocks						
North America	1,713	2,726	1,462	851	908	921
Central America	45	27	28	32	31	31
South America	880	491	394	848	718	668
European Union	71	34	24	37	25	14
Middle East	76	62	18	13	8	8
North Africa	41	29	43	43	43	43
Sub-Saharan Africa	1,514	1,727	905	1,984	1,751	1,751
East Asia	733	578	397	372	347	347
South Asia	183	181	154	144	94	94
Oceania	791	676	771	506	661	501
Others	0	0	0	0	0	0
Total	6,047	6,531	4,196	4,830	4,586	4,378

NOTES: Regional definitions appear on last page of this circular. Imports are reported on a trade year basis. All other data are reported using local marketing years.

World Oats Trade
October/September Year, Thousand Metric Tons

	2007/08	2008/09	2009/10	2010/11	2011/12 Sep	2011/12 Oct
TY Exports						
Argentina	1	5	1	5	5	5
Australia	174	161	211	150	200	200
Brazil	4	9	4	5	5	5
Canada	2,321	1,792	1,539	1,350	1,450	1,450
Chile	17	31	37	125	75	75
EU-27	133	103	216	150	150	150
Russia	7	2	4	5	5	5
Others	33	6	19	15	5	5
Subtotal	2,690	2,109	2,031	1,805	1,895	1,895
United States	53	38	38	45	45	45
World Total	2,743	2,147	2,069	1,850	1,940	1,940
TY Imports						
Argentina	1	2	2	5	5	5
Bosnia and Herzegovina	3	2	3	5	5	5
Canada	17	14	21	20	15	15
China	13	39	57	50	50	50
Colombia	14	2	2	5	5	5
Ecuador	15	14	11	10	10	10
EU-27	2	4	2	5	5	5
Japan	68	46	56	60	60	60
Mexico	131	82	46	75	75	75
Norway	47	8	34	10	15	15
South Africa	18	33	21	25	25	25
Switzerland	56	52	49	50	50	50
Turkey	11	6	0	5	5	5
Uruguay	0	11	4	5	5	5
Others	12	3	2	5	0	0
Subtotal	408	318	310	335	330	330
Unaccounted	91	42	152	215	110	110
United States	2,244	1,787	1,607	1,300	1,500	1,500
World Total	2,743	2,147	2,069	1,850	1,940	1,940

TY=Trade Year, see Endnotes.

World Oats Production, Consumption, and Stocks
Local Marketing Years, Thousand Metric Tons

	2007/08	2008/09	2009/10	2010/11	2011/12 Sep	2011/12 Oct
Production						
Algeria	80	80	140	140	140	140
Argentina	472	291	182	600	345	345
Australia	1,502	1,160	1,180	1,500	1,600	1,600
Belarus	600	600	800	700	800	800
Brazil	238	239	253	379	370	370
Canada	4,696	4,273	2,906	2,480	2,900	2,900
Chile	384	344	381	564	500	500
China	350	300	410	420	420	420
EU-27	8,634	8,935	8,579	7,370	7,846	7,766
Kazakhstan	230	138	204	160	160	160
Mexico	124	148	148	148	148	148
Norway	276	328	245	245	245	245
Russia	5,384	5,835	5,401	3,218	5,000	5,000
Turkey	189	196	218	210	210	210
Ukraine	544	944	731	458	550	550
Others	457	457	475	475	475	475
Subtotal	24,160	24,268	22,253	19,067	21,709	21,629
United States	1,313	1,294	1,351	1,178	834	784
World Total	25,473	25,562	23,604	20,245	22,543	22,413
Total Consumption						
Algeria	86	80	140	141	140	140
Argentina	450	300	200	600	350	350
Australia	1,335	1,035	975	1,300	1,350	1,350
Belarus	575	600	800	700	825	825
Brazil	240	225	250	370	360	360
Canada	1,935	1,766	1,753	1,525	1,500	1,500
Chile	350	325	350	450	450	450
China	375	350	450	450	500	500
EU-27	8,650	8,500	8,100	7,800	7,300	7,600
Kazakhstan	215	135	210	150	160	160
Mexico	235	210	235	195	220	220
Norway	340	320	285	255	265	265
Russia	5,300	5,600	5,500	3,450	4,900	4,900
Turkey	200	210	215	215	215	215
Ukraine	550	925	725	475	550	550
Others	626	608	622	638	638	638
Subtotal	21,785	21,213	20,878	18,705	19,806	20,106
United States	3,161	2,968	3,011	2,789	2,653	2,654
World Total	24,946	24,181	23,889	21,494	22,459	22,760
Ending Stocks						
Argentina	100	89	70	70	65	65
Australia	183	147	144	194	244	244
Belarus	75	75	75	75	50	50
Canada	950	1,527	1,170	769	734	734
China	77	66	83	103	73	73
EU-27	625	972	1,224	687	975	708
Russia	266	499	397	160	255	255
Others	167	197	179	219	164	164
Subtotal	2,443	3,572	3,342	2,277	2,560	2,293
United States	969	1,221	1,166	982	669	619
World Total	3,412	4,793	4,508	3,259	3,229	2,912

Regional Oats Imports, Production, Consumption, and Stocks

Thousand Metric Tons

	2007/08	2008/09	2009/10	2010/11	Sep 2011/12	Oct 2011/12
TY Imports						
North America	2,392	1,883	1,674	1,395	1,590	1,590
South America	30	32	19	25	25	25
European Union	2	4	2	5	5	5
Other Europe	108	62	87	70	70	70
Former Soviet Union - 12	7	0	0	0	0	0
Middle East	11	6	0	5	5	5
North Africa	1	0	1	0	0	0
Sub-Saharan Africa	18	33	21	25	25	25
East Asia	81	85	113	110	110	110
Oceania	2	0	0	0	0	0
Total	2,652	2,105	1,917	1,635	1,830	1,830
Production						
North America	6,133	5,715	4,405	3,806	3,882	3,832
South America	1,117	897	857	1,584	1,256	1,256
European Union	8,634	8,935	8,579	7,370	7,846	7,766
Other Europe	553	605	522	522	522	522
Former Soviet Union - 12	6,763	7,522	7,141	4,541	6,515	6,515
Middle East	189	196	218	210	210	210
North Africa	110	110	170	170	170	170
Sub-Saharan Africa	45	45	45	45	45	45
East Asia	352	302	412	422	422	422
Oceania	1,577	1,235	1,255	1,575	1,675	1,675
Total	25,473	25,562	23,604	20,245	22,543	22,413
Domestic Consumption						
North America	5,331	4,944	4,999	4,509	4,373	4,374
South America	1,091	896	857	1,481	1,221	1,221
European Union	8,650	8,500	8,100	7,800	7,300	7,600
Other Europe	680	647	620	592	597	597
Former Soviet Union - 12	6,645	7,265	7,240	4,780	6,440	6,440
Middle East	200	210	215	215	215	215
North Africa	116	110	170	171	170	170
Sub-Saharan Africa	55	75	65	70	70	70
East Asia	445	400	505	510	565	565
Oceania	1,410	1,110	1,050	1,375	1,425	1,425
Total	24,623	24,157	23,821	21,503	22,376	22,677
Ending Stocks						
North America	1,927	2,755	2,341	1,759	1,414	1,364
South America	126	113	95	152	102	102
European Union	625	972	1,224	687	975	708
Other Europe	34	53	45	45	40	40
Former Soviet Union - 12	410	659	541	282	347	347
Middle East	5	2	5	5	5	5
North Africa	1	1	1	1	1	1
Sub-Saharan Africa	20	23	24	24	24	24
East Asia	81	68	88	110	77	77
Oceania	183	147	144	194	244	244
Total	3,412	4,793	4,508	3,259	3,229	2,912

NOTES: Regional definitions appear on last page of this circular. Imports are reported on a trade year basis. All other data are reported using local marketing years.

World Rye Trade
October/September Year, Thousand Metric Tons

	2007/08	2008/09	2009/10	2010/11	2011/12 Sep	2011/12 Oct
TY Exports						
Belarus	75	50	25	200	75	75
Canada	167	76	142	175	100	100
EU-27	59	114	136	75	100	100
Russia	86	14	11	10	0	10
Others	3	6	93	15	0	0
Subtotal	390	260	407	475	275	285
United States	8	6	4	5	5	5
World Total	398	266	411	480	280	290
TY Imports						
Croatia	2	2	2	1	1	1
EU-27	88	8	6	15	10	10
Israel	7	11	9	10	10	10
Japan	83	57	103	85	75	75
Korea, South	6	7	7	5	5	5
Norway	11	11	14	10	10	10
Switzerland	4	4	6	5	5	5
Turkey	14	6	0	5	5	5
Others	0	3	2	150	0	0
Subtotal	215	109	149	286	121	121
Unaccounted	31	49	133	54	34	44
United States	152	108	129	140	125	125
World Total	398	266	411	480	280	290

TY=Trade Year, see Endnotes.

World Rye Production, Consumption, and Stocks
Local Marketing Years, Thousand Metric Tons

	2007/08	2008/09	2009/10	2010/11	2011/12 Sep	2011/12 Oct
Production						
Argentina	77	55	55	40	50	50
Belarus	1,300	1,500	1,700	1,200	1,500	1,500
Canada	252	316	280	232	181	202
EU-27	7,679	9,262	9,962	7,794	7,469	7,459
Russia	3,909	4,505	4,333	1,642	3,000	3,000
Turkey	241	247	343	270	270	270
Ukraine	562	1,051	954	464	550	550
Others	209	190	202	176	176	176
Subtotal	14,229	17,126	17,829	11,818	13,196	13,207
United States	160	203	178	189	168	161
World Total	14,389	17,329	18,007	12,007	13,364	13,368
Total Consumption						
Argentina	77	55	55	40	50	50
Belarus	1,200	1,400	1,600	1,150	1,400	1,400
Canada	143	152	140	139	100	100
EU-27	7,300	8,750	9,550	8,300	7,750	7,800
Japan	90	65	90	85	75	75
Kazakhstan	65	40	75	50	50	50
Norway	61	59	40	37	37	37
Russia	3,750	4,400	4,325	1,875	3,000	3,000
Turkey	250	275	340	265	270	270
Ukraine	550	800	800	650	600	600
Others	122	127	124	120	120	120
Subtotal	13,663	16,181	17,209	12,829	13,471	13,531
United States	335	292	273	330	300	293
World Total	13,998	16,473	17,482	13,159	13,771	13,824
Ending Stocks						
Belarus	218	268	343	193	218	218
Canada	35	123	139	41	22	43
EU-27	1,017	1,424	1,737	1,144	830	713
Japan	13	5	18	18	18	18
Russia	223	312	308	225	225	215
Turkey	34	14	17	27	32	32
Ukraine	68	313	411	177	127	127
Others	5	7	7	7	7	7
Subtotal	1,613	2,466	2,980	1,832	1,479	1,373
United States	10	13	24	20	23	23
World Total	1,623	2,479	3,004	1,852	1,502	1,396

Regional Rye Imports, Production, Consumption, and Stocks

Thousand Metric Tons

	2007/08	2008/09	2009/10	2010/11	Sep 2011/12	Oct 2011/12
TY Imports						
North America	152	108	129	140	125	125
South America	0	0	0	0	0	0
European Union	88	8	6	15	10	10
Other Europe	17	18	22	16	16	16
Former Soviet Union - 12	0	2	2	150	0	0
Middle East	21	17	9	15	15	15
Sub-Saharan Africa	0	0	0	0	0	0
East Asia	89	64	110	90	80	80
Oceania	0	0	0	0	0	0
Total	367	217	278	426	246	246
Production						
North America	412	519	458	421	349	363
South America	84	63	61	45	55	55
European Union	7,679	9,262	9,962	7,794	7,469	7,459
Other Europe	111	119	98	98	98	98
Former Soviet Union - 12	5,839	7,096	7,062	3,356	5,100	5,100
Middle East	241	247	343	270	270	270
Sub-Saharan Africa	3	3	3	3	3	3
East Asia	0	0	0	0	0	0
Oceania	20	20	20	20	20	20
Total	14,389	17,329	18,007	12,007	13,364	13,368
Domestic Consumption						
North America	478	444	413	469	400	393
South America	84	63	61	45	55	55
European Union	7,300	8,750	9,550	8,300	7,750	7,800
Other Europe	140	137	119	114	114	114
Former Soviet Union - 12	5,565	6,640	6,800	3,725	5,050	5,050
Middle East	257	286	349	275	280	280
Sub-Saharan Africa	3	3	3	3	3	3
East Asia	96	72	97	90	80	80
Oceania	20	20	20	20	20	20
Total	13,943	16,415	17,412	13,041	13,752	13,795
Ending Stocks						
North America	45	136	163	61	45	66
South America	0	0	0	0	0	0
European Union	1,017	1,424	1,737	1,144	830	713
Other Europe	1	1	1	1	1	1
Former Soviet Union - 12	513	899	1,068	601	576	566
Middle East	34	14	17	27	32	32
Sub-Saharan Africa	0	0	0	0	0	0
East Asia	13	5	18	18	18	18
Oceania	0	0	0	0	0	0
Total	1,623	2,479	3,004	1,852	1,502	1,396

NOTES: Regional definitions appear on last page of this circular. Imports are reported on a trade year basis. All other data are reported using local marketing years.



HISTORICAL DATA SERIES FOR SELECTED REGIONS AND COUNTRIES

CONTENTS

European Union: Grain Supply and Demand.....	36
China: Grain Supply and Demand.....	37
Other Europe: Grain Supply and Demand	38
Former Soviet Union: Grain Supply and Demand	39
Wheat Supply and Disappearance: Selected Exporters	43
Corn Supply and Disappearance: Selected Exporters	45
Barley Supply and Disappearance: Selected Exporters.....	47
Sorghum Supply and Disappearance: Selected Exporters.....	48
U.S. Grains: Supply and Distribution	49
Total Wheat and Coarse Grains: Supply and Demand.....	50
World Wheat and Coarse Grains: Supply and Demand	51
World Corn and Barley: Supply and Demand	52
World Rice: Supply and Demand.....	53

European Union: Grain Supply and Demand

Wheat and Coarse Grains Millions of Metric Tons/Hectares

	Area Harvested	Yield	Production	Imports	Exports	Feed Dom. Consumpti	Domestic Consumpti	Ending Stocks
Wheat								
2000/01	26.5	5.0	131.7	3.5	15.7	56.3	118.4	17.5
2001/02	25.9	4.8	123.4	8.7	12.8	56.5	118.5	18.3
2002/03	26.4	5.0	132.6	10.7	18.1	60.0	125.0	18.5
2003/04	24.3	4.5	110.6	7.4	9.8	52.4	115.1	11.5
2004/05	26.0	5.7	146.9	7.1	14.7	59.2	123.2	27.5
2005/06	25.8	5.1	132.4	6.8	15.7	63.0	127.5	23.4
2006/07	24.5	5.1	124.9	5.2	13.8	60.2	125.5	14.2
2007/08	24.7	4.9	120.1	6.9	12.3	52.4	116.5	12.4
2008/09	26.7	5.7	151.1	7.7	25.4	60.5	127.0	18.9
2009/10	25.8	5.4	138.8	5.5	22.1	57.5	125.0	16.2
2010/11	26.0	5.2	135.6	4.7	22.9	52.5	122.0	11.6
2011/12	25.7	5.3	136.3	7.5	16.0	56.5	126.5	13.0
Coarse Grains								
2000/01	33.2	4.2	140.3	4.1	9.3	105.5	139.7	18.4
2001/02	33.7	4.5	150.5	3.9	6.7	108.1	143.8	22.4
2002/03	32.8	4.5	148.4	4.4	7.6	109.5	145.0	22.6
2003/04	32.7	4.0	131.8	8.2	4.2	109.7	145.3	13.1
2004/05	33.4	5.0	166.7	3.0	4.9	116.6	152.6	25.3
2005/06	32.7	4.5	146.8	2.8	4.4	110.0	148.1	22.4
2006/07	32.0	4.3	137.9	8.1	4.7	110.9	148.4	15.3
2007/08	32.2	4.2	136.6	20.3	4.6	119.6	154.9	12.7
2008/09	33.6	4.8	162.1	3.4	5.6	114.0	151.9	20.8
2009/10	32.5	4.8	155.0	3.0	3.0	112.7	150.3	25.7
2010/11	30.2	4.6	139.6	8.4	6.1	113.9	151.9	15.7
2011/12	30.6	4.7	143.6	4.2	3.8	108.0	146.3	13.4
Wheat and Coarse Grains								
2000/01	59.7	4.6	272.0	7.6	24.9	161.8	258.0	35.9
2001/02	59.6	4.6	273.9	12.7	19.4	164.6	262.3	40.7
2002/03	59.2	4.7	281.0	15.0	25.7	169.5	270.0	41.1
2003/04	57.0	4.2	242.4	15.6	14.0	162.1	260.4	24.7
2004/05	59.4	5.3	313.6	10.1	19.6	175.8	275.9	52.8
2005/06	58.5	4.8	279.1	9.6	20.1	173.0	275.6	45.8
2006/07	56.4	4.7	262.8	13.3	18.5	171.1	273.9	29.5
2007/08	56.9	4.5	256.7	27.2	16.9	172.0	271.4	25.2
2008/09	60.2	5.2	313.2	11.2	30.9	174.5	278.9	39.8
2009/10	58.3	5.0	293.9	8.6	25.1	170.2	275.3	41.8
2010/11	56.1	4.9	275.2	13.1	28.9	166.4	273.9	27.3
2011/12	56.3	5.0	279.9	11.7	19.8	164.5	272.8	26.3

China: Grain Supply and Demand

Wheat and Coarse Grains Millions of Metric Tons/Hectares

	Area Harvested	Yield	Production	Imports	Exports	Feed Dom. Consumpti	Domestic Consumpti	Ending Stocks
Wheat								
2000/01	26.7	3.7	99.6	0.2	0.6	10.0	110.3	91.9
2001/02	24.6	3.8	93.9	1.1	1.5	9.0	108.7	76.6
2002/03	23.9	3.8	90.3	0.4	1.7	6.5	105.2	60.4
2003/04	22.0	3.9	86.5	3.7	2.8	6.0	104.5	43.3
2004/05	21.6	4.3	92.0	6.7	1.2	4.0	102.0	38.8
2005/06	22.8	4.3	97.4	1.1	1.4	3.5	101.5	34.5
2006/07	23.6	4.6	108.5	0.4	2.8	4.0	102.0	38.6
2007/08	23.7	4.6	109.3	0.0	2.8	8.0	106.0	39.1
2008/09	23.6	4.8	112.5	0.5	0.7	8.0	105.5	45.8
2009/10	24.3	4.7	115.1	1.4	0.9	10.0	107.0	54.4
2010/11	24.3	4.7	115.2	0.9	0.9	13.0	109.5	60.1
2011/12	24.4	4.8	117.0	1.0	1.0	17.0	113.0	64.1
Coarse Grains								
2000/01	26.5	4.3	114.0	2.4	7.3	94.4	130.4	102.8
2001/02	27.3	4.5	122.4	2.0	8.6	96.3	133.0	85.6
2002/03	27.8	4.7	130.6	1.8	15.3	98.4	136.3	66.5
2003/04	26.8	4.6	124.0	1.5	7.7	99.1	138.3	45.9
2004/05	28.0	4.9	138.3	2.1	7.6	100.3	141.1	37.6
2005/06	28.8	5.1	147.8	2.3	3.8	103.4	147.2	36.7
2006/07	30.9	5.1	159.1	1.2	5.5	104.6	153.5	38.0
2007/08	31.8	5.0	158.9	1.2	0.9	106.3	157.8	39.4
2008/09	32.2	5.4	172.4	1.7	0.2	108.3	161.1	52.2
2009/10	33.4	5.1	169.6	3.8	0.2	118.4	173.0	52.4
2010/11	34.8	5.3	183.4	2.7	0.2	124.3	184.0	54.3
2011/12	35.3	5.3	188.3	3.9	0.3	131.9	194.8	51.4
Wheat and Coarse Grains								
2000/01	53.1	4.0	213.6	2.6	7.9	104.4	240.7	194.7
2001/02	52.0	4.2	216.3	3.1	10.1	105.3	241.7	162.2
2002/03	51.7	4.3	220.9	2.2	17.1	104.9	241.5	126.8
2003/04	48.8	4.3	210.5	5.3	10.5	105.1	242.8	89.2
2004/05	49.6	4.6	230.2	8.8	8.8	104.3	243.1	76.4
2005/06	51.6	4.7	245.2	3.4	5.2	106.9	248.7	71.2
2006/07	54.5	4.9	267.6	1.5	8.2	108.6	255.5	76.6
2007/08	55.5	4.8	268.2	1.2	3.7	114.3	263.8	78.5
2008/09	55.8	5.1	284.9	2.1	0.9	116.3	266.6	98.0
2009/10	57.7	4.9	284.7	5.2	1.1	128.4	280.0	106.8
2010/11	59.1	5.1	298.6	3.6	1.1	137.3	293.5	114.4
2011/12	59.7	5.1	305.3	4.9	1.3	148.9	307.8	115.5

Other Europe: Grain Supply and Demand

Wheat and Coarse Grains Millions of Metric Tons/Hectares

	Area Harvested	Yield	Production	Imports	Exports	Feed Dom. Consumpti	Domestic Consumpti	Ending Stocks
Wheat								
2000/01	1.4	3.3	4.6	1.2	0.3	0.7	5.5	1.4
2001/02	1.4	3.4	4.9	1.8	0.6	0.9	5.9	1.5
2002/03	1.4	3.5	4.9	1.4	0.6	0.9	5.6	1.5
2003/04	1.2	3.1	3.9	1.5	0.1	0.7	5.4	1.3
2004/05	1.4	4.0	5.4	1.5	0.3	1.0	5.9	2.0
2005/06	1.1	3.7	4.2	1.5	0.2	0.9	5.8	1.8
2006/07	1.2	3.6	4.3	1.5	0.6	0.7	5.3	1.7
2007/08	1.2	3.7	4.4	1.9	0.8	0.8	5.5	1.8
2008/09	1.1	4.2	4.7	1.7	0.5	1.0	5.6	2.2
2009/10	1.2	3.8	4.6	1.7	0.8	0.8	5.5	2.2
2010/11	1.1	3.6	3.8	1.6	0.8	0.7	5.3	1.5
2011/12	1.1	3.9	4.3	1.7	0.6	0.7	5.4	1.6
Coarse Grains								
2000/01	2.6	3.1	8.1	1.0	0.0	7.7	9.0	1.0
2001/02	2.7	4.1	10.9	0.8	0.2	9.8	11.1	1.4
2002/03	2.7	4.4	11.7	0.6	0.6	9.9	11.4	1.8
2003/04	2.7	3.5	9.2	0.8	0.1	9.5	10.8	1.1
2004/05	2.7	4.8	12.8	0.6	0.6	10.8	12.2	1.6
2005/06	2.7	4.8	12.7	0.7	1.4	10.7	12.0	1.5
2006/07	2.5	4.6	11.6	0.9	0.9	10.2	11.5	1.5
2007/08	2.6	3.6	9.4	1.0	0.1	9.1	10.4	1.3
2008/09	2.7	4.6	12.4	0.6	1.9	9.6	10.9	1.5
2009/10	2.4	4.8	11.8	0.7	1.7	9.3	10.8	1.7
2010/11	2.5	4.9	12.2	0.9	2.2	9.3	10.9	1.7
2011/12	2.6	4.7	12.0	0.7	2.2	9.3	10.8	1.4
Wheat and Coarse Grains								
2000/01	4.0	3.2	12.7	2.2	0.3	8.4	14.5	2.3
2001/02	4.1	3.9	15.8	2.6	0.8	10.7	17.0	2.9
2002/03	4.1	4.1	16.6	2.0	1.2	10.7	17.0	3.3
2003/04	3.9	3.4	13.1	2.3	0.2	10.2	16.2	2.4
2004/05	4.0	4.5	18.2	2.1	0.9	11.8	18.1	3.7
2005/06	3.8	4.4	16.9	2.1	1.6	11.5	17.8	3.3
2006/07	3.7	4.3	15.9	2.4	1.5	10.9	16.8	3.3
2007/08	3.8	3.6	13.8	2.9	0.9	10.0	15.9	3.2
2008/09	3.8	4.5	17.1	2.3	2.4	10.5	16.5	3.7
2009/10	3.7	4.5	16.4	2.4	2.5	10.1	16.2	3.8
2010/11	3.6	4.5	16.0	2.5	3.0	10.0	16.2	3.2
2011/12	3.7	4.4	16.3	2.5	2.8	10.0	16.2	3.0

Former Soviet Union: Grain Supply and Demand

Wheat and Coarse Grains Millions of Metric Tons/Hectares

	Area Harvested	Yield	Production	Imports	Exports	Feed Dom. Consumpti	Domestic Consumpti	Ending Stocks
Wheat								
2005/06	49.4	1.8	91.0	5.6	21.1	23.7	75.3	17.1
2006/07	46.0	1.8	84.9	6.0	22.6	21.8	72.8	12.6
2007/08	47.5	1.9	92.5	6.0	21.9	23.9	75.4	13.9
2008/09	51.7	2.2	115.5	6.6	37.7	24.4	76.0	22.1
2009/10	54.9	2.1	113.9	5.4	36.7	26.0	78.2	26.6
2010/11	51.9	1.6	81.0	5.5	14.1	23.7	75.5	23.5
2011/12	50.6	2.2	110.4	5.8	34.7	25.6	77.8	27.2
Coarse Grains								
2005/06	28.5	2.0	55.6	1.1	8.6	34.5	50.5	5.2
2006/07	30.0	2.0	58.7	1.0	8.5	35.5	51.1	5.3
2007/08	29.6	1.8	54.2	1.0	5.3	35.0	50.6	4.7
2008/09	30.9	2.6	79.2	0.7	17.1	42.0	58.6	8.8
2009/10	29.8	2.3	68.2	0.4	15.0	39.2	55.2	7.3
2010/11	26.3	1.8	47.7	1.2	8.8	28.7	41.9	5.5
2011/12	28.4	2.6	74.8	0.6	18.8	38.4	53.8	8.3

Former Soviet Union: Grain Supply and Demand (Wheat)

Millions of Tons/Hectares

Country Mktg Year	Area Harvested	Yield	Production	MY Imports	MY Exports	Feed and Residual	Total Consumpti	Ending Stocks
Former Soviet Union - 12								
Kazakhstan								
2008/09	13.5	0.9	12.5	0.1	5.7	2.6	7.5	3.4
2009/10	14.8	1.2	17.1	0.1	7.9	2.9	7.8	4.8
2010/11	14.5	0.7	9.7	0.0	5.5	2.0	6.7	2.3
2011/12	13.8	1.4	19.0	0.0	8.5	3.0	7.9	4.9
Russia								
2008/09	26.6	2.4	63.8	0.2	18.4	16.2	38.9	10.7
2009/10	28.7	2.2	61.8	0.2	18.6	16.8	39.6	14.5
2010/11	26.6	1.6	41.5	0.1	4.0	16.0	38.6	13.5
2011/12	25.7	2.2	56.0	0.2	18.0	16.0	38.6	13.1
Ukraine								
2008/09	7.1	3.7	25.9	0.1	13.0	2.9	11.9	3.1
2009/10	6.8	3.1	20.9	0.0	9.3	3.3	12.3	2.4
2010/11	6.3	2.7	16.8	0.0	4.3	2.8	11.6	3.3
2011/12	6.7	3.3	22.0	0.1	8.0	3.7	12.5	4.9
Uzbekistan								
2008/09	1.4	4.4	6.0	1.4	0.2	1.3	7.1	0.9
2009/10	1.4	4.4	6.2	1.7	0.4	1.4	7.5	0.9
2010/11	1.4	4.6	6.5	1.6	0.1	1.4	7.8	1.1
2011/12	1.4	4.5	6.3	1.6	0.1	1.4	7.9	1.0
Other Former Soviet Union - 12								
2008/09	3.1	2.3	7.3	4.7	0.4	1.4	10.6	4.0
2009/10	3.3	2.4	8.0	3.5	0.5	1.6	11.0	4.0
2010/11	3.1	2.0	6.4	3.7	0.2	1.5	10.8	3.2
2011/12	3.1	2.3	7.1	3.9	0.1	1.5	10.9	3.2
Total Former Soviet Union - 12								
2008/09	51.7	2.2	115.5	6.6	37.7	24.4	76.0	22.1
2009/10	54.9	2.1	113.9	5.4	36.7	26.0	78.2	26.6
2010/11	51.9	1.6	81.0	5.5	14.1	23.7	75.5	23.5
2011/12	50.6	2.2	110.4	5.8	34.7	25.6	77.8	27.2

Former Soviet Union: Grain Supply and Demand (Barley)

Millions of Tons/Hectares

Country Mktg Year	Area Harvested	Yield	Production	MY Imports	MY Exports	Feed and Residual	Total Consumpti	Ending Stocks
Former Soviet Union - 12								
Kazakhstan								
2008/09	2.1	1.0	2.1	0.1	0.3	1.6	1.9	0.3
2009/10	1.8	1.4	2.5	0.0	0.4	1.7	2.0	0.5
2010/11	1.6	0.8	1.3	0.1	0.2	0.9	1.2	0.4
2011/12	1.6	1.4	2.3	0.0	0.3	1.6	1.9	0.5
Russia								
2008/09	9.7	2.4	23.1	0.1	3.4	12.3	17.1	3.8
2009/10	9.1	2.0	17.9	0.0	2.7	12.2	16.7	2.4
2010/11	7.2	1.2	8.4	0.4	0.3	5.5	9.5	1.4
2011/12	8.0	2.1	16.5	0.2	1.6	9.8	14.3	2.2
Ukraine								
2008/09	4.2	3.0	12.6	0.0	6.4	4.3	5.9	1.1
2009/10	5.0	2.4	11.8	0.0	6.2	3.9	5.6	1.1
2010/11	4.3	2.0	8.5	0.0	2.8	4.4	6.0	0.8
2011/12	3.7	2.4	9.0	0.0	4.1	3.4	5.0	0.7
Uzbekistan								
2008/09	0.1	3.2	0.2	0.0	0.0	0.2	0.3	0.0
2009/10	0.1	3.2	0.2	0.0	0.0	0.2	0.3	0.0
2010/11	0.1	3.2	0.2	0.0	0.0	0.2	0.3	0.0
2011/12	0.1	3.2	0.2	0.0	0.0	0.2	0.3	0.0
Other Former Soviet Union - 12								
2008/09	1.3	2.8	3.6	0.1	0.0	2.9	3.7	0.4
2009/10	1.2	2.5	3.0	0.1	0.0	2.3	3.1	0.4
2010/11	1.2	2.1	2.6	0.2	0.0	2.0	2.8	0.3
2011/12	1.3	2.4	3.1	0.1	0.0	2.3	3.1	0.4
Total Former Soviet Union - 12								
2008/09	17.3	2.4	41.6	0.3	10.1	21.3	28.8	5.5
2009/10	17.2	2.1	35.5	0.2	9.3	20.2	27.6	4.3
2010/11	14.4	1.5	21.0	0.7	3.3	13.0	19.8	2.8
2011/12	14.6	2.1	31.1	0.4	6.0	17.2	24.5	3.8

Former Soviet Union: Grain Supply and Demand (Corn)

Millions of Tons/Hectares

Country Mktg Year	Area Harvested	Yield	Production	MY Imports	MY Exports	Feed and Residual	Total Consumpti	Ending Stocks
Former Soviet Union - 12								
Kazakhstan								
2008/09	0.1	4.3	0.4	0.0	0.0	0.3	0.4	0.0
2009/10	0.1	4.7	0.5	0.0	0.0	0.3	0.4	0.0
2010/11	0.1	3.1	0.3	0.0	0.0	0.3	0.3	0.0
2011/12	0.1	4.6	0.4	0.0	0.0	0.3	0.4	0.0
Russia								
2008/09	1.8	3.7	6.7	0.1	1.3	4.5	5.2	0.3
2009/10	1.4	2.9	4.0	0.0	0.4	3.2	3.7	0.1
2010/11	1.4	2.2	3.1	0.2	0.0	2.8	3.2	0.2
2011/12	1.7	3.4	6.0	0.1	0.6	4.5	5.0	0.6
Ukraine								
2008/09	2.4	4.7	11.4	0.0	5.5	5.1	5.9	0.9
2009/10	2.1	5.0	10.5	0.0	5.1	5.0	5.7	0.7
2010/11	2.6	4.5	11.9	0.0	5.0	5.8	6.6	1.1
2011/12	3.5	6.0	21.0	0.0	12.0	7.0	7.8	2.3
Uzbekistan								
2008/09	0.0	4.6	0.2	0.0	0.0	0.2	0.2	0.0
2009/10	0.0	4.6	0.2	0.0	0.0	0.2	0.2	0.0
2010/11	0.0	4.6	0.2	0.0	0.0	0.2	0.2	0.0
2011/12	0.0	4.6	0.2	0.0	0.0	0.2	0.2	0.0
Other Former Soviet Union - 12								
2008/09	0.8	3.8	3.2	0.3	0.1	3.0	3.3	0.5
2009/10	0.8	3.6	3.0	0.2	0.1	2.8	3.1	0.5
2010/11	0.8	3.9	3.1	0.2	0.1	2.8	3.1	0.6
2011/12	0.9	4.1	3.5	0.1	0.2	3.2	3.5	0.6
Total Former Soviet Union - 12								
2008/09	5.2	4.2	21.9	0.4	6.9	13.0	14.9	1.8
2009/10	4.4	4.1	18.0	0.3	5.6	11.5	13.1	1.4
2010/11	5.0	3.7	18.6	0.4	5.2	11.8	13.3	1.8
2011/12	6.2	5.0	31.1	0.2	12.8	15.1	16.8	3.5

Wheat Supply and Disappearance: Selected Exporters
Million Metric Tons/Hectares

Country Mktg Year	Area Harvested	Yield	Production	MY Imports	MY Exports	Feed and Residual	Total Consumpti	Ending Stocks
Wheat Competitors								
Argentina								
2003/04	6.0	2.5	15.1	0.0	9.5	0.1	5.4	1.6
2004/05	6.4	2.6	16.9	0.0	11.9	0.1	5.4	1.3
2005/06	5.5	2.5	13.8	0.0	9.6	0.0	5.1	0.4
2006/07	6.2	2.6	16.3	0.0	10.7	0.1	5.4	0.6
2007/08	6.6	2.8	18.6	0.0	11.2	0.1	5.7	2.4
2008/09	5.3	2.1	11.0	0.0	6.8	0.0	5.3	1.3
2009/10	3.7	3.0	11.0	0.0	5.1	0.0	5.8	1.4
2010/11	4.4	3.4	15.0	0.0	9.0	0.0	5.9	1.5
2011/12	4.7	2.9	13.5	0.0	7.5	0.0	5.9	1.6
Australia								
2003/04	13.1	2.0	26.1	0.1	18.0	3.2	6.0	5.4
2004/05	13.4	1.6	21.9	0.1	14.7	3.2	6.0	6.7
2005/06	12.5	2.0	25.2	0.1	16.0	3.7	6.6	9.4
2006/07	11.8	0.9	10.8	0.1	8.7	4.5	7.4	4.2
2007/08	12.6	1.1	13.6	0.1	7.5	3.5	6.5	3.9
2008/09	13.5	1.6	21.4	0.1	14.7	4.2	7.3	3.4
2009/10	14.0	1.6	21.9	0.1	14.8	1.9	4.9	5.7
2010/11	13.4	1.9	26.0	0.1	18.3	3.0	6.1	7.4
2011/12	14.0	1.9	26.0	0.1	19.0	3.5	6.6	7.9
Canada								
2003/04	10.2	2.3	23.0	0.2	15.8	3.1	7.2	6.0
2004/05	9.4	2.6	24.8	0.3	14.9	3.8	8.2	7.9
2005/06	9.4	2.7	25.7	0.3	16.0	3.8	8.2	9.7
2006/07	9.7	2.6	25.3	0.3	19.4	4.5	9.0	6.9
2007/08	8.6	2.3	20.1	0.4	16.1	2.2	6.8	4.4
2008/09	10.0	2.9	28.6	0.4	18.9	3.2	8.0	6.5
2009/10	9.6	2.8	26.8	0.4	19.0	2.2	6.9	7.8
2010/11	8.3	2.8	23.2	0.4	16.5	2.9	7.7	7.2
2011/12	8.6	2.8	24.2	0.4	18.0	3.7	8.8	5.0
Total Wheat Competitors								
2003/04	29.2	2.2	64.3	0.3	43.3	6.4	18.5	13.0
2004/05	29.2	2.2	63.6	0.3	41.5	7.1	19.6	15.9
2005/06	27.3	2.4	64.7	0.4	41.7	7.5	19.9	19.4
2006/07	27.7	1.9	52.4	0.4	38.9	9.1	21.7	11.6

Wheat Supply and Disappearance: Selected Exporters (Continued)

Million Metric Tons/Hectares

Country Mktg Year	Area Harvested	Yield	Production	MY Imports	MY Exports	Feed and Residual	Total Consumpti	Ending Stocks
2007/08	27.8	1.9	52.2	0.5	34.8	5.8	18.9	10.6
2008/09	28.8	2.1	61.0	0.5	40.4	7.4	20.6	11.2
2009/10	27.3	2.2	59.8	0.5	39.0	4.1	17.7	14.9
2010/11	26.0	2.5	64.2	0.6	43.8	5.9	19.7	16.1
2011/12	27.3	2.3	63.7	0.5	44.5	7.2	21.3	14.4
India								
2003/04	24.9	2.6	65.1	0.0	5.7	0.6	68.3	6.9
2004/05	26.6	2.7	72.2	0.0	2.1	0.5	72.8	4.1
2005/06	26.5	2.6	68.6	0.0	0.8	0.3	70.0	2.0
2006/07	26.4	2.6	69.4	6.7	0.1	0.3	73.5	4.5
2007/08	28.0	2.7	75.8	2.0	0.0	0.2	76.4	5.8
2008/09	28.2	2.8	78.6	0.0	0.0	0.1	70.9	13.4
2009/10	27.8	2.9	80.7	0.2	0.1	0.1	78.2	16.1
2010/11	28.4	2.8	80.8	0.3	0.1	0.2	81.8	15.4
2011/12	29.4	2.9	85.9	0.0	1.0	0.2	84.7	15.6
Turkey								
2003/04	8.6	2.0	16.8	1.1	0.8	1.0	16.8	1.7
2004/05	8.6	2.2	18.5	0.4	2.0	1.0	16.8	1.8
2005/06	8.6	2.2	18.5	0.1	3.2	0.4	16.1	1.1
2006/07	8.6	2.0	17.5	1.7	2.4	0.8	16.7	1.3
2007/08	7.7	2.0	15.5	2.2	1.7	0.8	16.8	0.4
2008/09	7.7	2.2	16.8	3.5	2.2	0.7	16.9	1.5
2009/10	7.8	2.4	18.5	3.2	4.3	0.8	17.1	1.8
2010/11	8.0	2.1	17.0	3.7	3.0	0.7	17.2	2.3
2011/12	7.7	2.4	18.5	3.5	3.5	1.4	18.1	2.7

Corn Supply and Disappearance: Selected Exporters
Million Metric Tons/Hectares

Country Mktg Year	Area Harvested	Yield	Production	MY Imports	MY Exports	Feed and Residual	Total Consumpti	Ending Stocks
Argentina								
2003/04	2.3	6.4	15.0	0.0	10.9	2.8	4.4	0.4
2004/05	2.8	7.4	20.5	0.0	14.6	3.5	5.2	1.1
2005/06	2.4	6.5	15.8	0.0	9.5	4.4	6.2	1.3
2006/07	2.8	8.0	22.5	0.0	15.3	4.8	6.7	1.8
2007/08	3.4	6.5	22.0	0.0	14.8	4.9	6.8	2.2
2008/09	2.5	6.2	15.5	0.0	10.3	4.5	6.4	1.0
2009/10	2.8	8.5	23.3	0.0	16.5	5.0	6.9	0.9
2010/11	3.6	6.3	22.5	0.0	15.0	5.1	7.1	1.3
2011/12	3.6	7.6	27.5	0.0	19.5	5.5	7.6	1.7
China								
2003/04	24.1	4.8	115.8	0.0	7.6	97.0	128.4	44.9
2004/05	25.4	5.1	130.3	0.0	7.6	98.0	131.0	36.6
2005/06	26.4	5.3	139.4	0.1	3.7	101.0	137.0	35.3
2006/07	28.5	5.3	151.6	0.0	5.3	104.0	145.0	36.6
2007/08	29.5	5.2	152.3	0.0	0.5	106.0	150.0	38.4
2008/09	29.9	5.6	165.9	0.0	0.2	108.0	153.0	51.2
2009/10	31.2	5.3	164.0	1.3	0.2	118.0	165.0	51.3
2010/11	32.5	5.5	177.2	1.0	0.1	124.0	176.0	53.4
2011/12	33.0	5.5	182.0	2.0	0.2	131.5	186.5	50.7
South Africa								
2003/04	3.3	2.9	9.7	0.2	0.7	4.1	8.7	3.0
2004/05	3.2	3.6	11.7	0.4	2.1	5.0	9.7	3.2
2005/06	2.0	3.4	6.9	0.9	0.5	4.0	8.2	2.3
2006/07	2.9	2.5	7.3	1.1	0.5	4.4	8.6	1.7
2007/08	3.3	4.0	13.2	0.0	2.2	4.3	9.6	3.1
2008/09	2.9	4.3	12.6	0.0	1.7	4.3	9.9	4.1
2009/10	3.3	4.1	13.4	0.0	2.1	4.6	10.3	5.2
2010/11	2.9	4.1	11.8	0.0	2.5	4.7	10.4	4.1
2011/12	3.0	4.2	12.5	0.0	2.0	4.9	10.8	3.8
Brazil								
2003/04	12.4	3.4	42.0	0.4	4.4	30.5	36.3	7.9
2004/05	11.6	3.0	35.0	0.5	0.7	32.1	38.5	4.2
2005/06	12.9	3.2	41.7	1.1	4.5	33.0	39.5	3.0
2006/07	14.0	3.6	51.0	1.4	10.8	34.5	41.0	3.6
2007/08	14.7	4.0	58.6	0.7	7.8	36.0	42.5	12.6
2008/09	14.1	3.6	51.0	1.1	7.1	38.5	45.5	12.1

Corn Supply and Disappearance: Selected Exporters (Continued)

Million Metric Tons/Hectares

Country Mktg Year	Area Harvested	Yield	Production	MY Imports	MY Exports	Feed and Residual	Total Consumpti	Ending Stocks
2009/10	12.9	4.3	56.1	0.4	11.6	40.0	47.0	10.0
2010/11	13.8	4.2	57.5	0.5	8.5	42.5	49.5	10.0
2011/12	14.5	4.2	61.0	0.5	8.5	45.0	52.0	11.0
Total Corn Competitors								
2003/04	42.1	4.3	182.5	0.6	23.7	134.4	177.8	56.1
2004/05	43.0	4.6	197.5	0.9	25.0	138.6	184.4	45.1
2005/06	43.7	4.7	203.8	2.1	18.3	142.4	190.9	41.8
2006/07	48.2	4.8	232.4	2.6	31.9	147.7	201.3	43.6
2007/08	50.9	4.8	246.1	0.8	25.3	151.2	208.9	56.3
2008/09	49.4	5.0	245.0	1.2	19.3	155.3	214.8	68.4
2009/10	50.1	5.1	256.8	1.7	30.3	167.6	229.2	67.4
2010/11	52.8	5.1	269.0	1.5	26.1	176.3	243.0	68.8
2011/12	54.1	5.2	283.0	2.5	30.2	186.9	256.9	67.3

Barley Supply and Disappearance: Selected Exporters
Million Metric Tons/Hectares

Country Mktg Year	Area Harvested	Yield	Production	MY Imports	MY Exports	Feed and Residual	Total Consumpti	Ending Stocks
Australia								
2003/04	4.5	2.3	10.4	0.0	6.4	2.2	3.1	1.9
2004/05	4.6	1.7	7.7	0.0	4.3	2.5	3.5	1.9
2005/06	4.4	2.2	9.5	0.0	5.3	2.5	3.5	2.6
2006/07	4.2	1.0	4.3	0.0	1.9	2.9	4.0	1.0
2007/08	4.9	1.5	7.2	0.0	3.4	2.1	3.1	1.7
2008/09	5.0	1.6	8.0	0.0	3.2	2.9	4.0	2.4
2009/10	4.4	1.8	7.9	0.0	3.9	3.3	4.5	1.9
2010/11	4.1	2.3	9.3	0.0	4.2	3.4	4.7	2.3
2011/12	4.0	2.1	8.2	0.0	4.0	3.3	4.6	1.9
Canada								
2003/04	4.4	2.8	12.2	0.0	1.8	8.4	9.7	2.1
2004/05	3.8	3.3	12.6	0.1	1.2	8.8	10.1	3.4
2005/06	3.6	3.2	11.7	0.0	2.3	8.4	9.6	3.3
2006/07	3.2	3.0	9.6	0.0	1.2	8.8	10.2	1.5
2007/08	4.0	2.7	11.0	0.1	3.0	6.6	7.9	1.6
2008/09	3.5	3.4	11.8	0.0	1.5	7.7	9.1	2.8
2009/10	2.9	3.3	9.5	0.0	1.3	7.3	8.5	2.6
2010/11	2.4	3.2	7.6	0.0	1.2	6.4	7.6	1.4
2011/12	2.4	3.4	7.9	0.1	0.7	6.1	7.2	1.5
EU-27								
2003/04	14.1	4.0	55.8	0.7	2.6	41.8	58.0	4.5
2004/05	13.7	4.7	64.1	0.3	3.3	38.6	54.6	11.1
2005/06	13.8	4.0	54.8	0.1	3.3	38.2	54.1	8.5
2006/07	13.8	4.1	56.2	0.2	3.5	38.7	55.7	5.8
2007/08	13.8	4.2	57.5	0.3	3.8	38.7	54.2	5.7
2008/09	14.5	4.5	65.5	0.3	3.6	41.5	57.0	10.9
2009/10	13.9	4.5	62.1	0.1	1.1	41.5	56.5	15.5
2010/11	12.5	4.3	53.0	0.2	4.9	41.2	56.4	7.4
2011/12	12.2	4.2	51.9	0.1	2.0	37.5	52.5	4.9

Sorghum Supply and Disappearance: Selected Exporters
Million Metric Tons/Hectares

Country Mktg Year	Area Harvested	Yield	Production	MY Imports	MY Exports	Feed and Residual	Total Consumpti	Ending Stocks
Argentina								
2003/04	0.5	4.6	2.2	0.0	0.2	1.9	2.0	0.4
2004/05	0.6	5.2	2.9	0.0	0.4	2.4	2.6	0.4
2005/06	0.5	4.7	2.3	0.0	0.2	2.1	2.3	0.2
2006/07	0.6	4.7	2.8	0.0	1.1	1.5	1.7	0.2
2007/08	0.6	4.7	2.9	0.0	1.2	1.0	1.2	0.7
2008/09	0.5	3.7	1.7	0.0	1.1	1.0	1.1	0.2
2009/10	0.8	4.8	3.6	0.0	1.8	1.7	1.9	0.2
2010/11	1.0	4.4	4.4	0.0	1.9	1.9	2.1	0.6
2011/12	0.9	4.7	4.0	0.0	1.9	2.0	2.2	0.5
Australia								
2003/04	0.7	2.7	2.0	0.0	0.6	1.4	1.4	0.1
2004/05	0.8	2.7	2.0	0.0	0.2	1.8	1.8	0.1
2005/06	0.8	2.5	1.9	0.0	0.1	1.9	1.9	0.0
2006/07	0.6	2.1	1.3	0.0	0.1	1.2	1.2	0.0
2007/08	0.9	4.0	3.8	0.0	0.8	2.2	2.2	0.8
2008/09	0.8	3.5	2.7	0.0	1.0	1.8	1.8	0.7
2009/10	0.5	3.1	1.6	0.0	0.3	1.2	1.2	0.8
2010/11	0.6	3.3	2.1	0.0	1.0	1.4	1.4	0.5
2011/12	0.7	3.4	2.2	0.0	0.8	1.4	1.4	0.5

U.S. Grains Supply and Distribution: Wheat, Corn, Sorghum, Barley, Oats, Rye, and Rice

Thousand Metric Tons/Hectares

	Area Harvested	Yield	Rough Production	Production	Imports	TY Imports	Exports	TY Exports	Feed Dom. Consumption	Domestic Consumption	Ending Stocks
Wheat											
2009/10	20,191	3	nr	60,366	3,227	3,235	23,930	24,172	4,078	30,978	26,552
2010/11	19,271	3	nr	60,062	2,638	2,571	35,076	35,977	3,589	30,710	23,466
2011/12	18,500	3	nr	54,650	3,266	3,200	26,535	26,000	4,354	32,065	22,782
Corn											
2009/10	32,169	10	nr	332,549	212	237	50,295	49,721	130,173	281,590	43,380
2010/11	32,960	10	nr	316,165	686	700	46,611	45,500	122,006	284,961	28,659
2011/12	33,968	9	nr	315,810	381	400	40,642	41,000	119,385	282,207	22,001
Sorghum											
2009/10	2,234	4	nr	9,728	0	0	4,211	4,074	3,573	5,859	1,048
2010/11	1,946	5	nr	8,773	1	0	3,810	3,800	3,155	5,315	697
2011/12	1,794	3	nr	6,193	0	0	2,540	2,700	1,651	3,683	667
Barley											
2009/10	1,260	4	nr	4,949	361	302	123	152	1,040	4,604	2,515
2010/11	998	4	nr	3,925	207	150	165	220	1,084	4,537	1,945
2011/12	906	4	nr	3,376	218	200	218	200	653	4,137	1,184
Oats											
2009/10	558	2	nr	1,351	1,636	1,607	31	38	1,930	3,011	1,166
2010/11	511	2	nr	1,178	1,468	1,300	41	45	1,715	2,789	982
2011/12	380	2	nr	784	1,551	1,500	44	45	1,551	2,654	619
Rye											
2009/10	102	2	nr	178	108	129	2	4	37	273	24
2010/11	107	2	nr	189	141	140	4	5	93	330	20
2011/12	98	2	nr	161	140	125	5	5	57	293	23
Rice, Milled											
2009/10	1,256	8	9,972	7,133	604	562	3,514	3,868	nr	4,016	1,184
2010/11	1,463	8	11,027	7,593	582	635	3,487	3,250	nr	4,358	1,514
2011/12	1,062	8	8,478	5,998	603	670	2,920	3,050	nr	4,028	1,167

Notes: Wheat Trade Year (TY) statistics are on July/June years. Barley, corn, sorghum, rye and oats Trade Year (TY) statistics are on Oct/Sept years. Rice Trade Year (TY) statistics are for the subsequent calendar year; 'Imports' and 'Exports' columns contain data on the local marketing year: wheat, barley, oats and rye are June/May; corn and sorghum are Sept/Aug; rice is Aug/July.

Total Wheat and Coarse Grains: Supply and Demand

Millions of Metric Tons/Hectares

	Area Harvested	Yield	Production	TY Exports	Feed Dom. Consumpti	Domestic Consumpti	Ending Stocks
Wheat and Coarse Grains							
1982/83	576.9	2.2	1,248.0	189.6	593.4	1,197.1	332.1
1983/84	563.8	2.1	1,162.5	193.2	588.4	1,216.1	278.5
1984/85	567.0	2.3	1,315.0	203.6	609.9	1,253.5	340.0
1985/86	570.9	2.3	1,328.5	165.2	613.1	1,247.9	420.6
1986/87	565.6	2.4	1,348.0	174.7	644.2	1,299.4	469.2
1987/88	544.8	2.4	1,285.9	202.2	655.1	1,329.8	423.1
1988/89	542.4	2.2	1,218.1	203.3	618.2	1,302.0	339.3
1989/90	548.9	2.4	1,327.4	208.9	642.9	1,346.2	320.5
1990/91	549.0	2.6	1,417.6	190.1	667.3	1,369.5	368.7
1991/92	546.3	2.5	1,355.7	207.5	650.1	1,364.9	359.5
1992/93	548.8	2.6	1,431.6	205.2	661.4	1,389.1	399.2
1993/94	539.2	2.5	1,356.1	188.2	654.0	1,389.2	366.1
1994/95	537.6	2.6	1,392.5	200.1	666.9	1,396.0	362.6
1995/96	533.4	2.5	1,338.5	187.5	638.0	1,381.9	319.1
1996/97	552.8	2.7	1,490.5	198.4	670.9	1,442.9	366.7
1997/98	539.5	2.8	1,491.6	190.3	681.2	1,444.7	413.6
1998/99	533.9	2.8	1,481.9	198.7	680.7	1,448.1	447.5
1999/00	514.7	2.8	1,464.8	214.3	685.8	1,468.0	443.7
2000/01	514.3	2.8	1,446.8	205.1	693.9	1,470.1	420.4
2001/02	516.3	2.9	1,480.5	208.5	708.4	1,496.0	404.9
2002/03	506.6	2.8	1,442.3	209.6	705.9	1,505.1	342.0
2003/04	516.0	2.9	1,470.9	206.2	712.3	1,533.7	279.2
2004/05	517.7	3.2	1,642.4	215.2	751.6	1,585.9	335.6
2005/06	521.0	3.1	1,599.4	222.8	752.0	1,616.4	318.7
2006/07	518.5	3.1	1,584.8	230.4	741.9	1,629.6	273.8
2007/08	536.9	3.2	1,692.9	245.3	755.1	1,675.6	291.1
2008/09	538.7	3.3	1,794.1	253.6	766.1	1,724.3	360.9
2009/10	538.1	3.3	1,800.5	253.4	770.8	1,765.3	396.1
2010/11	532.6	3.3	1,747.1	247.1	759.3	1,779.5	363.8
2011/12	536.7	3.4	1,817.5	251.5	786.7	1,822.9	358.3

Notes: Wheat and coarse grains trade data are on July/June years through 1975/76. From 1976/77 to the present, coarse grains data are on an Oct/Sept trade year.

World Wheat and Coarse Grains: Supply and Demand

Millions of Metric Tons/Hectares

	Area Harvested	Yield	Production	TY Exports	Feed Dom. Consumpti	Domestic Consumpti	Ending Stocks
Wheat							
1989/90	226.3	2.4	533.1	103.9	103.7	531.3	137.1
1990/91	231.7	2.5	588.8	101.3	130.1	554.3	171.6
1991/92	223.4	2.4	543.5	111.4	113.8	551.8	163.2
1992/93	222.8	2.5	562.6	113.2	110.1	547.7	177.9
1993/94	221.8	2.5	558.5	101.7	108.0	553.0	183.4
1994/95	214.5	2.4	523.0	101.5	99.6	542.1	164.2
1995/96	219.1	2.5	537.5	99.2	93.3	546.1	155.7
1996/97	230.3	2.5	581.5	104.0	97.9	573.4	163.8
1997/98	228.5	2.7	610.2	104.5	102.0	576.7	197.2
1998/99	225.4	2.6	590.4	102.0	105.0	578.3	209.4
1999/00	215.7	2.7	586.8	111.9	100.6	585.5	210.7
2000/01	218.0	2.7	583.1	102.4	105.2	585.4	208.4
2001/02	215.4	2.7	583.6	108.0	106.9	586.6	205.3
2002/03	215.0	2.6	568.6	106.8	111.1	603.9	170.0
2003/04	210.0	2.6	554.8	103.6	97.2	588.9	135.9
2004/05	217.2	2.9	626.7	113.9	106.6	607.1	155.5
2005/06	219.7	2.8	619.1	114.1	113.0	622.2	152.5
2006/07	213.0	2.8	596.3	115.6	108.1	616.1	132.6
2007/08	218.2	2.8	612.1	116.4	99.3	617.7	127.0
2008/09	225.3	3.0	682.8	143.0	118.1	642.7	167.1
2009/10	227.3	3.0	684.4	134.4	115.7	650.7	200.7
2010/11	222.5	2.9	648.2	132.3	112.6	653.3	195.6
2011/12	222.4	3.1	681.2	134.6	125.5	674.4	202.4
Coarse Grains							
1989/90	322.5	2.5	794.3	105.0	539.2	814.9	183.4
1990/91	317.2	2.6	828.8	88.9	537.3	815.2	197.1
1991/92	322.9	2.5	812.2	96.2	536.2	813.1	196.3
1992/93	326.0	2.7	868.9	91.9	551.3	841.4	221.3
1993/94	317.4	2.5	797.6	86.5	546.1	836.2	182.7
1994/95	323.1	2.7	869.4	98.6	567.4	853.8	198.3
1995/96	314.4	2.5	800.9	88.3	544.7	835.8	163.4
1996/97	322.5	2.8	909.1	94.4	573.0	869.5	203.0
1997/98	311.0	2.8	881.4	85.8	579.2	867.9	216.4
1998/99	308.6	2.9	891.5	96.7	575.7	869.7	238.1
1999/00	299.0	2.9	878.0	102.4	585.2	882.6	233.0
2000/01	296.2	2.9	863.7	102.7	588.8	884.8	212.0
2001/02	300.9	3.0	897.0	100.5	601.6	909.4	199.6
2002/03	291.6	3.0	873.6	102.8	594.8	901.2	172.0
2003/04	306.0	3.0	916.1	102.6	615.1	944.8	143.3
2004/05	300.5	3.4	1,015.6	101.3	645.0	978.8	180.1
2005/06	301.3	3.3	980.3	108.6	639.0	994.3	166.2
2006/07	305.4	3.2	988.6	114.7	633.9	1,013.5	141.2
2007/08	318.7	3.4	1,080.8	128.9	655.9	1,058.0	164.1
2008/09	313.5	3.5	1,111.3	110.7	648.0	1,081.6	193.8
2009/10	310.8	3.6	1,116.1	119.0	655.1	1,114.6	195.4
2010/11	310.2	3.5	1,099.0	114.7	646.6	1,126.2	168.2
2011/12	314.4	3.6	1,136.3	116.9	661.2	1,148.5	156.0

Notes: Wheat and coarse grains trade data are on July/June years through 1975/76. From 1976/77 to the present, coarse grains data are on an Oct/Sept trade year.

World Corn and Barley: Supply and Demand

Millions of Metric Tons/Hectares

	Area Harvested	Yield	Production	TY Exports	Feed Dom. Consumpti	Domestic Consumpti	Ending Stocks
Corn							
1989/90	127.3	3.6	461.7	74.5	324.8	474.1	132.9
1990/91	129.2	3.7	482.0	58.8	318.5	473.4	141.4
1991/92	132.6	3.7	493.0	63.0	334.4	493.3	141.0
1992/93	133.2	4.0	535.6	62.6	348.7	512.1	162.7
1993/94	130.7	3.6	475.8	57.4	342.0	509.0	129.4
1994/95	135.2	4.1	559.3	71.9	371.5	535.6	153.2
1995/96	135.0	3.8	516.4	64.8	365.1	536.6	133.0
1996/97	141.7	4.2	593.0	66.7	387.7	560.1	165.8
1997/98	136.3	4.2	574.4	63.1	400.4	573.8	166.4
1998/99	139.2	4.4	606.0	68.7	404.3	581.5	191.0
1999/00	139.1	4.4	608.1	72.3	422.4	605.3	193.8
2000/01	137.3	4.3	591.4	75.9	427.2	610.1	175.1
2001/02	137.7	4.4	601.4	72.8	436.4	625.1	151.3
2002/03	137.4	4.4	603.1	77.0	432.9	627.5	127.0
2003/04	142.0	4.4	627.5	79.1	445.5	649.2	105.3
2004/05	145.5	4.9	715.8	76.0	475.4	689.3	131.8
2005/06	145.7	4.8	699.7	82.7	477.9	706.7	124.9
2006/07	149.9	4.8	714.0	91.5	478.2	728.7	110.2
2007/08	161.2	4.9	794.9	98.3	498.0	773.6	131.5
2008/09	158.8	5.0	799.3	84.0	481.1	783.7	147.2
2009/10	157.8	5.2	819.4	93.0	489.0	822.7	143.9
2010/11	163.4	5.1	828.3	90.9	494.1	842.4	129.8
2011/12	168.2	5.1	860.1	93.3	509.5	866.7	123.2
Barley							
1989/90	73.7	2.3	166.2	18.5	126.0	170.4	27.5
1990/91	73.0	2.5	179.5	19.6	130.8	175.5	31.5
1991/92	76.6	2.2	169.9	19.4	120.3	166.5	34.9
1992/93	73.1	2.3	166.3	16.4	119.0	165.6	35.0
1993/94	73.8	2.3	169.0	18.8	123.8	169.1	34.9
1994/95	72.8	2.2	160.7	15.3	120.9	165.6	30.0
1995/96	68.6	2.1	141.2	13.4	107.8	150.7	20.5
1996/97	65.5	2.3	153.1	17.9	106.3	149.5	24.1
1997/98	64.5	2.4	153.9	12.8	104.1	145.8	32.2
1998/99	60.8	2.2	136.0	17.8	99.5	139.3	29.0
1999/00	54.5	2.3	127.4	17.8	94.0	132.5	23.9
2000/01	53.9	2.5	133.1	16.2	94.6	134.4	22.6
2001/02	56.3	2.5	143.5	17.2	95.5	136.8	29.3
2002/03	55.8	2.4	134.4	16.3	95.0	136.2	27.5
2003/04	59.4	2.4	142.2	14.8	102.8	146.3	23.4
2004/05	58.2	2.6	152.3	17.0	100.2	142.7	33.0
2005/06	56.2	2.4	136.2	17.5	97.5	141.1	28.1
2006/07	57.0	2.4	136.6	14.6	98.0	143.4	21.4
2007/08	57.5	2.3	133.0	18.6	91.1	134.0	20.4
2008/09	55.8	2.8	155.2	18.2	100.3	144.4	31.2
2009/10	55.7	2.7	150.5	17.3	100.3	144.3	37.4
2010/11	50.8	2.4	124.1	14.8	91.4	135.4	26.1
2011/12	50.4	2.6	132.6	15.4	92.0	136.2	22.5

Notes: Coarse grains trade data are on July June years through 1975/76. From 1976/77 to the present, coarse grains data are on an Oct/Sept trade year.

World Rice: Supply and Demand

Millions of Metric Tons/Hectares

	Area Harvested	Yield	Rough Production	Production	TY Exports	Domestic Consumpti	Ending Stocks
Rice, Milled							
1982/83	140.5	3.0	418.2	285.0	11.2	278.7	56.8
1983/84	144.6	3.1	450.9	306.9	11.9	294.4	69.3
1984/85	144.1	3.2	464.9	316.8	11.0	298.4	87.7
1985/86	144.7	3.2	467.3	318.0	11.8	308.0	97.7
1986/87	144.8	3.2	464.6	316.1	12.9	310.4	103.3
1987/88	141.4	3.3	464.8	315.1	11.4	313.1	105.3
1988/89	146.6	3.3	490.8	332.1	14.0	325.7	111.7
1989/90	147.8	3.5	510.3	345.2	11.7	336.3	120.6
1990/91	147.0	3.5	519.4	351.4	12.3	345.3	126.7
1991/92	147.5	3.5	522.8	353.2	14.4	353.2	126.7
1992/93	146.5	3.6	524.2	354.0	14.9	357.5	123.2
1993/94	145.3	3.6	526.1	354.7	16.6	358.9	119.0
1994/95	147.4	3.7	539.9	364.1	20.8	365.5	117.6
1995/96	148.4	3.7	547.3	368.8	19.7	368.3	118.1
1996/97	150.1	3.8	565.3	381.4	18.9	379.2	120.3
1997/98	151.7	3.8	575.2	387.4	27.6	379.9	127.7
1998/99	153.1	3.8	587.0	394.9	24.8	388.6	134.0
1999/00	155.9	3.9	608.8	409.3	22.8	400.2	143.1
2000/01	152.4	3.9	594.3	399.4	24.4	395.8	146.7
2001/02	151.4	3.9	594.7	399.7	27.8	413.5	132.9
2002/03	146.9	3.8	563.5	378.5	27.5	408.4	102.9
2003/04	149.3	3.9	585.4	392.5	27.3	413.9	81.5
2004/05	151.8	3.9	597.0	401.2	29.0	408.7	74.0
2005/06	153.8	4.0	622.9	418.2	29.1	415.6	76.6
2006/07	154.6	4.1	626.2	420.0	31.9	421.5	75.1
2007/08	155.3	4.2	645.4	432.7	29.8	427.8	80.0
2008/09	157.9	4.2	669.1	447.5	29.3	435.9	91.5
2009/10	156.0	4.2	659.1	440.3	31.6	437.7	94.2
2010/11	157.3	4.3	677.0	451.4	34.2	447.8	97.8
2011/12	160.8	4.3	691.4	461.4	33.0	457.8	101.4

Notes: Stocks, exports and consumption are expressed on a milled basis in marketing years.

ENDNOTES TO GRAIN: WORLD MARKETS AND TRADE

REGIONAL TABLES

North America: Canada, Mexico, the United States.

Central America: Belize, Costa Rica, El Salvador, Guatemala, Honduras, Nicaragua, Panama.

Caribbean: Anguilla, Antigua and Barbuda, Aruba, Bahamas, Barbados, Bermuda, British Virgin Islands, Cayman Islands, Cuba, Dominica, Dominican Republic, French West Indies, Grenada, Guadeloupe, Haiti, Jamaica and Dep, Leeward-Windward Islands, Martinique, Montserrat, Netherlands Antilles, Puerto Rico, Kitts and Nevis, St. Lucia, St. Vincent and the Grenadines, Trinidad and Tobago, Turks and Caicos Islands, Virgin Islands of the U.S.

South America: Argentina, Bolivia, Brazil, Chile, Colombia, Ecuador, Falkland Islands (Islas Malvinas), French Guiana, Guyana, Paraguay, Peru, Suriname, Uruguay, Venezuela.

EU: Austria, Belgium/Luxembourg, Bulgaria, Cyprus, Czech Republic, Denmark, Estonia, Finland, France, Germany, Greece, Hungary, Ireland, Italy, Latvia, Lithuania, Malta, Netherlands, Poland, Portugal, Romania, Slovakia, Slovenia, Spain, Sweden, United Kingdom.

Other Europe: Albania, Azores, Bosnia and Herzegovina, Croatia, Former Yugoslavia, Gibraltar, Iceland, Macedonia, Montenegro, Norway, Serbia, Switzerland.

Former Soviet Union: Armenia, Azerbaijan, Belarus, Georgia, Kazakhstan, Kyrgyzstan, Moldova, Russia, Tajikistan, Turkmenistan, Ukraine, Uzbekistan.

Middle East: Bahrain, Iran, Iraq, Israel, Jordan, Kuwait, Lebanon, Oman, Qatar, Saudi Arabia, Syria, Turkey, United Arab Emirates, Yemen.

North Africa: Algeria, Egypt, Libya, Morocco, Tunisia.

Sub-Saharan Africa: all African countries except North Africa.

East Asia: China, Hong Kong, Japan, South Korea, North Korea, Macau, Mongolia, Taiwan.

South Asia: Afghanistan, Bangladesh, Bhutan, India, Nepal, Pakistan, Sri Lanka, Maldives.

Southeast Asia: Brunei, Burma, Cambodia, Indonesia, Laos, Malaysia, Philippines, Singapore, Thailand, Vietnam.

Oceania: Australia, Fiji, New Zealand, Papua New Guinea.

OTHER NOTES

Local Marketing Years (LMY): LMY refers to the 12-month period following the main harvest, when the crop is marketed (i.e., consumed, traded, or stored). The year first listed begins a country's LMY for that commodity (2008/09 starts in 2008); except for summer grains in certain Southern Hemisphere countries and for rice in selected countries, where the second year begins the LMY (2008/09 starts in 2009). Key exporter LMY's are:

Wheat	Corn	Barley	Sorghum
Argentina (Dec/Nov)	Argentina (Mar/Feb)	Australia (Nov/Oct)	Argentina (Mar/Feb)
Australia (Oct/Sep)	Brazil (Mar/Feb)	Canada (Aug/Jul)	Australia (Mar/Feb)
Canada (Aug/Jul)	China (Oct/Sep)	EU-27 (Jul/Jun)	United States (Sep/Aug)
China (Jul/Jun)	South Africa (May/Apr)	Russia (Jul/Jun)	
EU-27 (Jul/Jun)	United States (Sep/Aug)	Ukraine (Jul/Jun)	
India (Apr/Mar)		United States (Jun/May)	
Kazakhstan (Jul/Jun)			
Russia (Jul/Jun)			
Turkey (Jun/May)			
Ukraine (Jul/Jun)			
United States (Jun/May)			

For a complete list of local marketing years, please see the FAS website (<http://www.fas.usda.gov/psdonline/psdAvailability.aspx>).

Stocks: Unless otherwise stated, stock data are based on an aggregate of differing local marketing years and should not be construed as representing world stock levels at a fixed point in time.

Consumption: World totals for consumption reflect total utilization, including food, seed, industrial, feed, and waste; as well as differences in local marketing year imports and local marketing year exports. Consumption statistics for regions and individual countries, however, reflect food, seed, industrial, feed, and waste only.

Trade: All PSD tables are balanced on the different local marketing years. All trade tables contain Trade Year (TY) data which puts all countries on a uniform, 12-month period for analytical comparisons: wheat is July/June; coarse grains, corn, barley, sorghum, oats, and rye are Oct/Sept; and rice is calendar year.

EU Consolidation: The trade figures starting from 1999/00 represent EU-27 and exclude all intra-trade. For the years 1960/61 through 1998/99, figures are the EU-15 and also exclude all intra-trade. EU-15 member states' data for grains are no longer maintained in the official USDA database. Data for the individual NMS-10, plus Bulgaria and Romania, exists only prior to 1999/00.

Statistics: (1) Wheat trade statistics include wheat, flour, and selected pasta products on a grain equivalent basis. (2) Rice trade statistics include rough, brown, milled, and broken on a milled

equivalent basis. (3) Coarse grains statistics include corn, barley, sorghum, oats, rye, millet, and mixed grains but exclude trade in barley malt, millet, and mixed grains.

Unaccounted: This term includes grain in transit, reporting discrepancies in some countries, and trade to countries outside the USDA database.

The Field Crops and Livestock Branch, Industry and Sector Analysis Division, Foreign Agricultural Service, USDA, Washington DC 20250, prepared this circular. Information is gathered from official statistics of foreign governments and other foreign source materials, reports of U.S. agricultural attachés and Foreign Service officers, office research, and related information. Further information may be obtained by writing the Division or telephoning (202) 720-6590.

Note: The previous report in this series was the Grain: World Markets and Trade Foreign Agricultural Service Circular FG 09-11 September 2011. For further details on world grain production, please see World Agricultural Production Foreign Agricultural Service Circular WAP 10-11 October 2011.

This circular is available in its entirety on the World Wide Web via the Foreign Agricultural Service Home Page. The address is: <http://www.fas.usda.gov>