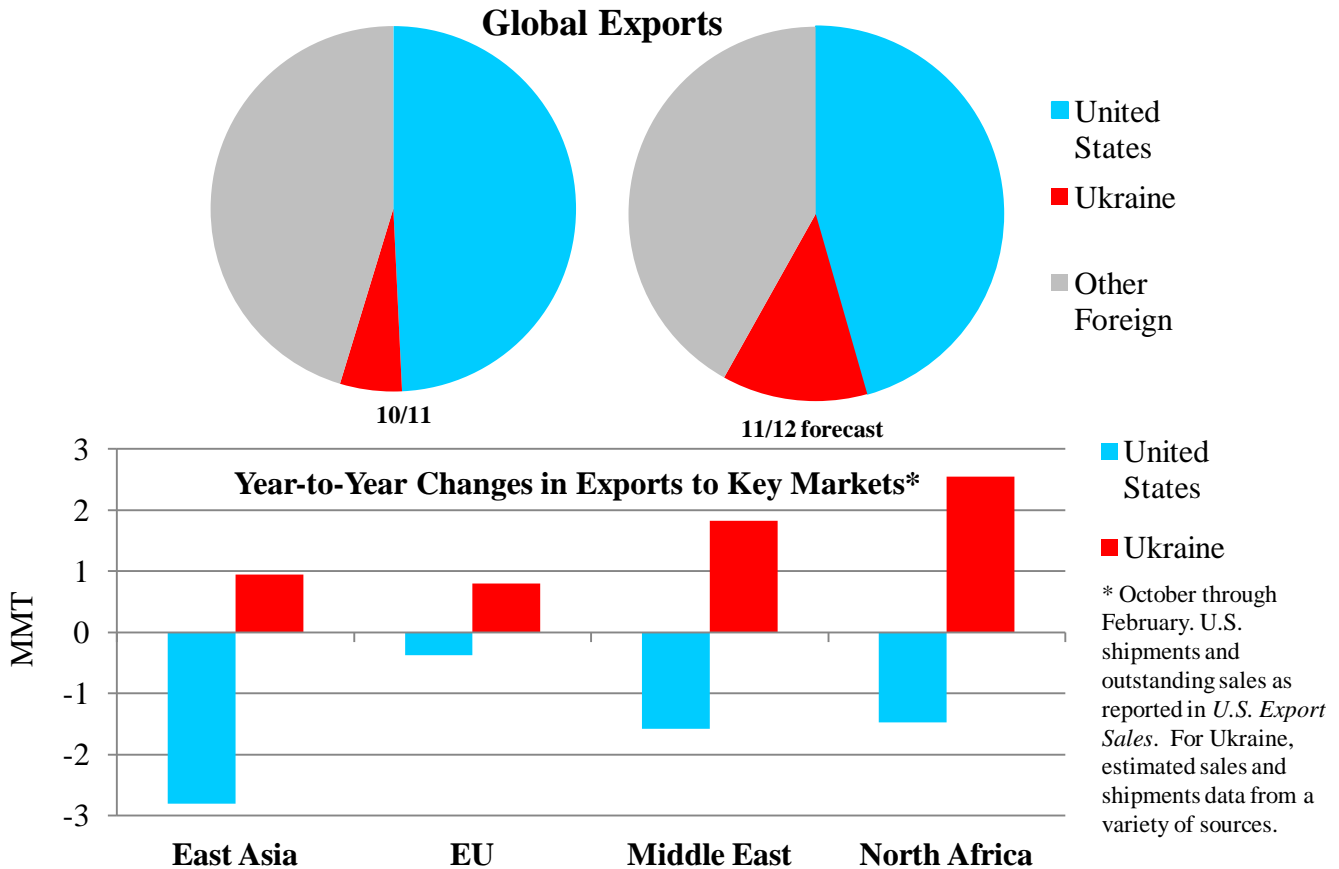




Grain: World Markets and Trade

Global Corn Trade Expands as Ukraine Grabs Market Share



Global corn trade has expanded compared to last year, and the United States, as the world’s largest corn exporter, might be expected to supply much of that demand. However, a near doubling of Ukraine’s corn crop has enabled exports to almost triple (5 million tons to 14 million tons), putting it on par with Argentina as the world’s second-largest corn exporter.

Ukraine’s abundant crop has created pressure to export those supplies because of limited storage facilities and another potential bumper crop on the horizon. Geographical and logistical comparative advantages to nearby markets will help exports and have already facilitated the displacement of about 4 million tons of U.S. corn to Egypt and the Middle East. U.S. year-to-date sales to East Asia (mostly to Japan) also show the impact of Ukrainian corn.

High global corn prices, tight U.S. supplies, and reduced crop prospects in Argentina will reportedly provide a strong incentive for Ukrainian farmers to plant more corn. Adding to that, adverse winter wheat conditions fuel the likelihood that failed winter wheat acreage will be reseeded to corn this spring. With prospects of record U.S. and Ukrainian crops depressing global prices in 2012/13, Ukraine has a strong motivation to sell and ship as fast as possible.

TABLE OF CONTENTS

World Markets and Trade: Commentary and Current Data	
Wheat	4
Rice	9
Coarse Grains	14
Historical Data Series for Selected Regions and Countries	34
Endnotes to Grain: World Markets and Trade	53

The Foreign Agricultural Service (FAS) updates its production, supply and distribution database for cotton, oilseeds, and grains at 9 a.m. on the day the World Agricultural Supply and Demand Estimates (WASDE) report is released. It is available on the FAS website (<http://www.fas.usda.gov/psdonline/>). This circular is released at 10:00 a.m. on the same day, together with its downloadable data set.

All Grain Summary Comparison

	Marketing Year	Wheat			Rice, Milled			Corn		
		2009/10	2010/11	2011/12	2009/10	2010/11	2011/12	2009/10	2010/11	2011/12
Production										
United States	(Jun-May)	60.4	60.1	54.4	7.1	7.6	5.9	332.5	316.2	313.9
Other		625.2	591.5	639.6	435.6	445.6	459.5	486.7	513.1	551.0
World Total		685.6	651.5	694.0	442.7	453.2	465.4	819.2	829.2	865.0
Domestic Consumption										
United States	(Jun-May)	31.0	30.7	31.5	4.0	4.4	3.9	281.6	285.0	279.5
Other		617.1	621.9	647.5	432.8	443.4	456.0	533.9	559.4	587.3
World Total		648.1	652.6	679.0	436.8	447.8	460.0	815.5	844.4	866.8
Ending Stocks										
United States	(Jun-May)	26.6	23.5	22.5	1.2	1.5	1.3	43.4	28.6	20.3
Other		175.8	176.0	187.1	93.0	96.3	99.0	100.8	100.4	104.2
World Total		202.3	199.5	209.6	94.2	97.8	100.3	144.2	129.1	124.5
TY Imports										
United States	(Jun-May)	3.2	2.6	3.2	0.6	0.6	0.7	0.2	0.7	0.5
Other		128.6	126.5	135.7	28.3	31.8	29.3	90.1	90.0	93.6
World Total		131.8	129.0	138.9	28.9	32.4	29.9	90.3	90.7	94.1
TY Exports										
United States	(Jun-May)	24.2	36.0	26.5	3.9	3.2	3.0	49.7	45.3	43.5
Other		110.2	96.3	115.3	27.9	31.9	29.7	43.2	46.4	52.8
World Total		134.4	132.3	141.8	31.8	35.1	32.7	93.0	91.6	96.3

Note: Consumption in this table has not been adjusted for differences in marketing year imports and exports and therefore differs from global totals shown elsewhere.

Marketing years for U.S. grains are: Wheat (Jun-May), Rice (Aug-Jul), Corn (Sep-Aug).
'Marketing Year' column is germane for U.S. wheat only.

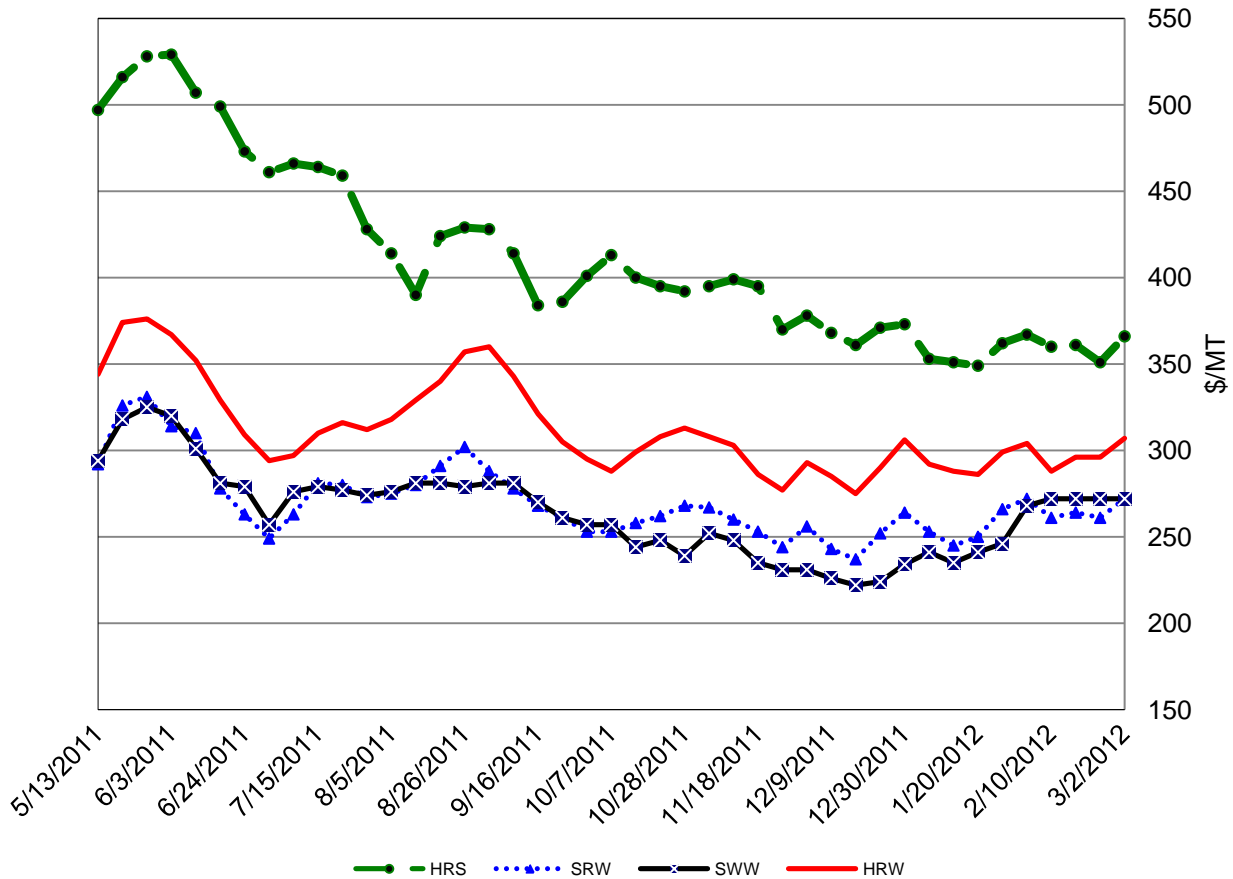
WHEAT: WORLD MARKETS AND TRADE

OVERVIEW

Global trade for 2011/12 is up this month primarily because of greater import demand from Iran and higher demand for feed-quality wheat. U.S. exports are raised on recent strong sales. The forecast U.S. season-average farm price is unchanged and remains a record.

PRICES:

U.S. Weekly FOB Export Bids



Prices of all wheat classes were nearly unchanged. Soft White Wheat (SWW) was up \$2 to \$272/ton while Soft Red Winter (SRW) ended the month unchanged, also at \$272/ton. However, during the past month, SRW dipped below SWW for the first time since October. Strong foreign demand is underpinning SWW prices. Hard Red Winter (HRW) was up \$3 to \$307/ton and Hard Red Spring (HRS) was down \$1 to \$366/ton.

TRADE CHANGES IN 2011/12

Selected Importers

- **Algeria** is up 300,000 tons to 6.4 million on account of a strong pace and recent purchases.
- **Iran** is raised sharply by 1.8 million tons to 2.0 million based on reported purchases to date.
- **South Korea** is boosted 300,000 tons to a near-record 5.0 million because of significant purchases of feed-quality wheat.
- **Syria** is cut 200,000 tons to 800,000 due to a sluggish pace.
- **Uzbekistan** is raised 300,000 tons to 2.0 million reflecting a strong pace of grain and flour imports from Kazakhstan.

Selected Exporters

- **Australia** is boosted 500,000 tons to a record 21.0 million as a result of the strong pace and a larger crop.
- **Brazil** is raised 500,000 tons to 1.5 million on reports of expanding sales.
- **Kazakhstan** is up 500,000 tons to a record 9.0 million because of robust sales from this year's record crop.
- **Turkey** is raised 300,000 tons to 4.0 million due to recent government grain sales.
- **United States** is raised 1.0 million tons to 26.5 million mostly fueled by continued strong sales of wheat to South Korea and Mexico, which will likely be used in livestock and poultry rations.

World Wheat, Flour, and Products Trade
July/June Year, Thousand Metric Tons

	2007/08	2008/09	2009/10	2010/11	2011/12 Feb	2011/12 Mar
TY Exports						
Argentina	10,228	8,621	5,172	7,738	9,700	9,700
Australia	7,449	13,450	13,764	18,477	20,500	21,000
Brazil	767	369	1,195	2,539	1,000	1,500
Canada	16,561	18,674	18,992	16,768	17,500	17,500
EU-27	12,272	25,351	22,115	22,850	17,000	17,000
Kazakhstan	8,181	5,701	7,871	5,519	8,500	9,000
Russia	12,220	18,393	18,556	3,983	20,500	20,500
Turkey	1,763	2,342	4,371	2,946	3,700	4,000
Ukraine	1,236	13,037	9,337	4,302	6,000	6,000
Uruguay	422	616	994	1,197	1,100	1,100
Others	11,052	9,317	7,854	10,028	7,764	7,964
Subtotal	82,151	115,871	110,221	96,347	113,264	115,264
United States	34,282	27,101	24,172	35,977	25,500	26,500
World Total	116,433	142,972	134,393	132,324	138,764	141,764
TY Imports						
Afghanistan	2,300	3,800	2,500	2,300	3,000	3,000
Algeria	5,904	6,356	5,167	6,436	6,100	6,400
Bangladesh	1,500	2,882	3,331	3,900	2,800	2,800
Brazil	7,076	6,762	6,667	6,710	7,000	7,000
Egypt	7,700	9,900	10,300	10,600	10,500	10,500
EU-27	6,933	7,737	5,519	4,712	7,500	7,500
Indonesia	5,227	5,419	5,364	6,611	6,700	6,700
Iran	200	9,500	3,600	26	200	2,000
Iraq	3,429	3,879	3,905	3,632	3,700	3,700
Israel	1,189	2,063	1,862	1,392	1,700	1,700
Japan	5,701	5,156	5,502	5,869	6,100	6,100
Korea, South	3,092	3,371	4,470	4,761	4,700	5,000
Mexico	3,136	3,342	3,196	3,462	4,200	4,200
Morocco	4,192	3,759	2,304	3,903	3,000	3,000
Nigeria	2,633	3,550	4,079	4,051	4,100	4,100
Peru	1,444	1,385	1,703	1,757	1,700	1,700
Philippines	2,266	3,201	3,188	3,235	3,200	3,200
Saudi Arabia	75	1,275	1,910	1,741	2,300	2,300
Sudan	1,060	1,712	1,901	1,642	1,800	1,800
Thailand	1,072	1,128	1,600	1,920	1,700	1,700
Tunisia	2,372	1,768	1,534	1,773	1,800	1,800
Turkey	2,192	3,578	3,218	3,517	3,500	3,500
Uzbekistan	990	1,440	1,677	1,618	1,700	2,000
Vietnam	1,066	1,016	1,927	2,460	2,300	2,300
Yemen	1,900	2,796	2,602	2,705	2,700	2,700
Others	35,827	40,012	39,537	35,718	38,645	39,045
Subtotal	110,476	136,787	128,563	126,451	132,645	135,745
Unaccounted	3,005	2,786	2,595	3,302	2,919	2,819
United States	2,952	3,399	3,235	2,571	3,200	3,200
World Total	116,433	142,972	134,393	132,324	138,764	141,764

TY=Trade Year, see Endnotes.

World Wheat Production, Consumption, and Stocks
Local Marketing Years, Thousand Metric Tons

	2007/08	2008/09	2009/10	2010/11	2011/12 Feb	2011/12 Mar
Production						
Argentina	18,600	11,000	12,000	16,100	14,500	14,500
Australia	13,569	21,420	21,834	27,891	28,300	29,500
Canada	20,054	28,611	26,848	23,167	25,260	25,260
China	109,298	112,464	115,120	115,180	117,920	117,920
Egypt	8,275	7,977	8,523	7,200	8,700	8,700
EU-27	120,133	151,122	138,816	135,674	137,486	137,486
India	75,810	78,570	80,680	80,800	86,870	86,870
Iran	15,887	7,957	13,485	15,500	13,750	13,750
Kazakhstan	16,466	12,538	17,051	9,638	22,732	22,732
Morocco	1,583	3,730	6,400	4,887	6,000	6,000
Pakistan	23,295	20,959	24,000	23,900	24,000	24,000
Russia	49,368	63,765	61,770	41,508	56,231	56,231
Turkey	15,500	16,800	18,450	17,000	18,800	18,800
Ukraine	13,938	25,885	20,866	16,844	22,000	22,000
Uzbekistan	6,200	6,000	6,200	6,500	6,300	6,300
Others	48,193	46,001	53,178	49,662	49,613	49,562
Subtotal	556,169	614,799	625,221	591,451	638,462	639,611
United States	55,821	68,016	60,366	60,062	54,413	54,413
World Total	611,990	682,815	685,587	651,513	692,875	694,024
Total Consumption						
Algeria	8,050	8,300	8,550	8,750	8,850	8,950
Brazil	10,300	10,700	11,000	10,800	11,200	11,200
Canada	6,793	7,977	6,927	7,674	9,000	9,000
China	106,000	105,500	107,000	110,500	113,500	116,000
Egypt	15,800	17,200	17,900	17,700	18,800	18,800
EU-27	116,536	127,000	125,000	122,000	127,000	125,500
India	76,423	70,924	78,150	81,760	83,055	83,055
Iran	15,500	15,800	16,100	15,700	15,000	15,500
Kazakhstan	7,800	7,500	7,600	6,200	9,000	9,000
Morocco	7,225	7,450	8,100	8,250	8,750	8,750
Pakistan	22,400	22,800	23,000	23,200	23,400	23,400
Russia	37,650	38,900	39,600	38,600	38,600	38,600
Turkey	16,800	16,900	17,100	17,200	18,100	18,100
Ukraine	12,300	11,900	12,300	11,600	13,390	13,440
Uzbekistan	7,000	7,100	7,500	7,900	8,000	8,000
Others	118,614	125,853	131,279	134,070	138,882	140,235
Subtotal	589,062	608,375	619,329	623,648	648,865	652,448
United States	28,614	34,293	30,978	30,710	31,613	31,477
World Total	617,676	642,668	650,307	654,358	680,478	683,925
Ending Stocks						
Australia	3,851	3,389	5,593	8,823	8,998	9,198
Canada	4,406	6,547	7,829	7,176	6,336	6,336
China	39,081	45,803	54,425	59,091	65,011	61,511
EU-27	12,429	18,937	16,157	11,693	12,679	14,179
India	5,800	13,430	16,120	15,360	18,500	18,500
Kazakhstan	3,908	3,364	5,001	2,927	8,184	7,684
Russia	4,068	10,743	14,521	13,535	10,866	10,866
Others	45,037	46,970	56,132	57,414	59,528	58,857
Subtotal	118,580	149,183	175,778	176,019	190,102	187,131
United States	8,323	17,867	26,552	23,466	22,997	22,453
World Total	126,903	167,050	202,330	199,485	213,099	209,584

Regional Wheat Imports, Production, Consumption, and Stocks

Thousand Metric Tons

	2007/08	2008/09	2009/10	2010/11	Feb 2011/12	Mar 2011/12
TY Imports						
North America	6,475	7,128	6,834	6,462	7,800	7,800
Central America	1,460	1,489	1,469	1,678	1,525	1,525
South America	13,092	13,074	13,091	12,935	13,390	13,590
European Union	6,933	7,737	5,519	4,712	7,500	7,500
Other Europe	1,923	1,712	1,696	1,649	1,735	1,735
Former Soviet Union - 12	6,032	6,569	5,415	5,473	6,175	6,825
Middle East	11,810	28,218	22,515	16,830	18,475	20,075
North Africa	21,742	23,472	21,396	24,131	23,000	23,300
Sub-Saharan Africa	10,287	13,707	15,773	14,475	15,585	15,735
East Asia	11,277	11,322	13,745	13,892	14,700	14,850
South Asia	8,215	10,771	7,586	7,662	7,235	7,235
Southeast Asia	11,405	12,324	13,902	16,301	15,850	15,850
Others	2,777	2,663	2,857	2,822	2,875	2,925
Total	113,428	140,186	131,798	129,022	135,845	138,945
Production						
North America	79,468	100,627	91,362	86,908	83,448	83,448
South America	25,435	20,516	22,039	26,696	25,262	25,212
European Union	120,133	151,122	138,816	135,674	137,486	137,486
Other Europe	4,405	4,712	4,609	3,800	4,413	4,413
Former Soviet Union - 12	92,366	115,486	114,047	81,061	114,408	114,299
Middle East	41,040	30,325	38,369	40,175	39,340	39,340
North Africa	13,948	14,352	20,261	16,133	18,925	18,925
Sub-Saharan Africa	5,547	6,103	6,155	5,568	5,686	5,686
East Asia	110,589	113,806	116,442	116,357	119,154	119,362
South Asia	105,070	103,898	111,200	110,792	115,990	115,890
Oceania	13,846	21,697	22,111	28,168	28,577	29,777
Others	143	171	176	181	186	186
Total	611,990	682,815	685,587	651,513	692,875	694,024
Domestic Consumption						
North America	40,907	48,270	44,205	44,784	47,763	47,627
South America	24,346	24,494	25,708	25,523	26,140	26,340
European Union	116,536	127,000	125,000	122,000	127,000	125,500
Other Europe	5,495	5,560	5,469	5,306	5,520	5,520
Former Soviet Union - 12	75,356	75,956	77,840	75,235	80,245	80,400
Middle East	50,758	52,669	53,615	53,860	54,650	55,150
North Africa	35,825	37,475	39,350	39,425	41,250	41,350
Sub-Saharan Africa	15,696	18,605	20,416	20,175	20,732	20,882
East Asia	117,556	117,218	120,188	123,570	127,350	130,108
South Asia	109,638	105,304	113,861	117,351	118,635	118,635
Southeast Asia	11,009	12,054	13,288	14,952	15,360	15,460
Oceania	7,383	8,120	5,835	7,044	8,130	8,670
Others	3,300	3,372	3,309	3,389	3,365	3,365
Total	613,805	636,097	648,084	652,614	676,140	679,007
Ending Stocks						
North America	13,108	24,729	34,901	31,082	29,798	29,254
South America	4,571	4,015	5,481	5,891	5,936	5,631
European Union	12,429	18,937	16,157	11,693	12,679	14,179
Other Europe	1,817	2,176	2,177	1,495	1,558	1,358
Former Soviet Union - 12	13,762	22,101	27,062	24,233	29,589	29,247
Middle East	11,610	11,564	15,050	14,651	13,604	13,404
North Africa	9,186	9,216	11,148	11,633	11,983	12,183
Sub-Saharan Africa	1,203	1,694	2,560	1,907	1,876	1,876
East Asia	41,898	48,636	57,253	62,494	68,514	65,108
South Asia	10,079	17,359	21,430	21,192	24,160	23,832
Southeast Asia	2,771	2,713	2,915	3,795	3,825	3,725
Oceania	4,117	3,606	5,784	9,080	9,257	9,467
Others	352	304	412	339	320	320
Total	126,903	167,050	202,330	199,485	213,099	209,584

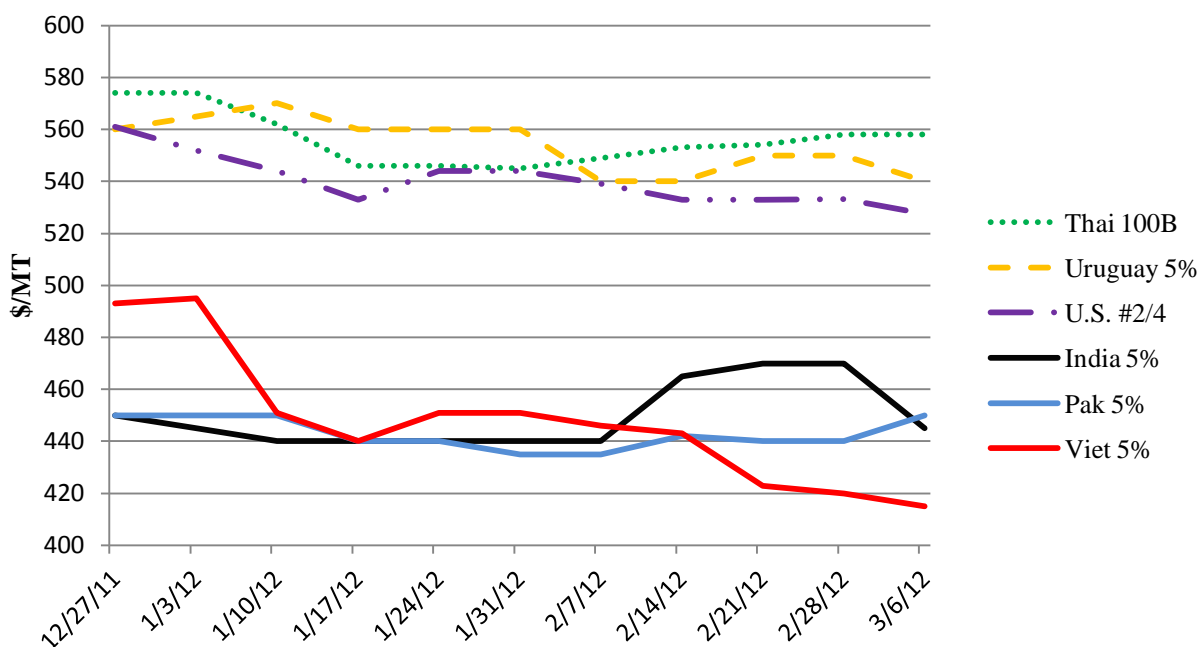
NOTES: Regional definitions appear on last page of this circular. Imports are reported on a trade year basis. All other data are reported using local marketing years.

RICE: WORLD MARKETS AND TRADE

OVERVIEW

Global trade is down nearly 7 percent from last year (2.4 million tons) as a number of governments restrict imports to reduce reliance on other countries and lessen the effects of international price swings. Global production and stocks continue to climb.

Rice Prices Bifurcate



FEATURE

Over the past 10 weeks, two price tiers have emerged, with quotes for Thai, U.S., and South American rice approximately \$100/MT above quotes from India, Pakistan, and Vietnam. India created the lower price tier upon re-entering the market in September, causing Vietnam and Pakistan to drop their prices in order to compete. These countries are grabbing market share as their combined 2012 exports are forecast to jump 15 percent (2 million tons). Exports from the pricier tier, on the other hand, are expected to fall nearly 30 percent (5 million tons) from last year.

SELECTED TRADE CHANGES

- **Brazil's** 2012 exports fall 100,000 tons to 600,000 on lower production due to drought in the rice growing regions.
- **Philippines's** imports are cut 300,000 tons to 1.2 million for 2011 on updated trade estimates.

MILLING RATE CHANGES

After a global review, milling rates have been adjusted for the following countries as far back as 2006/2007.

Afghanistan	Cote d'Ivoire	Liberia	Senegal
Angola	Dominican Rep.	Macedonia	Sierra Leone
Australia	Egypt	Malaysia	Tanzania
Bolivia	EU-27	Mali	Togo
Burma	Gambia	Mauritania	Turkey
Cambodia	Guinea	Mexico	Zambia
Cameroon	Guinea-Bissau	Mozambique	
Chad	Haiti	Nicaragua	
Colombia	Honduras	Niger	
Congo (Kinshasa)	Laos	Nigeria	

World Rice Trade
January/December Year, Thousand Metric Tons

	2007/08	2008/09	2009/10	2010/11	2011/12 Feb	2011/12 Mar
TY Exports						
Argentina	408	594	468	732	630	630
Australia	48	17	54	350	450	450
Brazil	511	591	430	1,300	725	625
Burma	541	1,052	445	750	750	750
Cambodia	500	800	1,000	1,000	1,000	1,000
China	969	783	619	500	600	600
Egypt	750	575	570	120	600	600
EU-27	157	150	282	300	350	350
Guyana	185	244	275	250	230	230
India	3,383	2,123	2,228	4,200	6,000	6,000
Japan	200	200	200	200	150	150
Pakistan	3,050	3,187	4,000	3,000	3,750	3,750
Thailand	10,011	8,570	9,047	10,500	6,500	6,500
Uruguay	742	926	808	841	850	850
Vietnam	4,649	5,950	6,734	7,000	6,500	6,500
Others	392	556	753	857	700	701
Subtotal	26,496	26,318	27,913	31,900	29,785	29,686
United States	3,267	3,017	3,868	3,213	3,000	3,000
World Total	29,763	29,335	31,781	35,113	32,785	32,686
TY Imports						
Bangladesh	1,658	150	660	1,483	650	650
Brazil	417	650	778	620	600	640
China	295	337	366	600	400	400
Cote d'Ivoire	800	800	840	900	950	950
Cuba	558	457	498	600	525	525
Egypt	20	20	15	40	500	500
EU-27	1,520	1,383	1,216	1,150	1,070	1,070
Ghana	300	410	320	520	400	400
Hong Kong	399	397	390	410	415	415
Indonesia	350	250	1,150	2,775	1,000	1,000
Iran	1,430	1,470	1,000	1,400	1,500	1,500
Iraq	975	1,089	1,140	1,150	1,200	1,200
Japan	533	750	649	700	700	700
Korea, South	282	245	320	480	365	365
Malaysia	1,039	1,086	907	990	1,130	1,085
Mexico	578	610	575	791	725	725
Mozambique	300	385	325	400	375	375
Nigeria	1,800	2,000	2,000	2,300	2,200	2,200
Philippines	2,500	2,000	2,400	1,200	1,500	1,500
Saudi Arabia	1,166	1,072	1,069	1,100	1,150	1,150
Senegal	860	715	685	800	750	750
South Africa	650	745	733	760	750	750
Syria	230	250	315	350	350	350
United Arab Emirates	350	380	400	420	430	430
Vietnam	300	500	400	500	400	400
Others	8,544	8,184	9,142	9,358	9,242	9,242
Subtotal	27,854	26,335	28,293	31,797	29,277	29,272
Unaccounted	1,258	2,318	2,926	2,696	2,858	2,739
United States	651	682	562	620	650	675
World Total	29,763	29,335	31,781	35,113	32,785	32,686

TY=Trade Year, see Endnotes.

Note about dates: 2011/12 is calendar year 2012, 2010/11 is calendar year 2011, and so on.

World Rice Production, Consumption, and Stocks
Local Marketing Years, Thousand Metric Tons

	2007/08	2008/09	2009/10	2010/11	2011/12 Feb	2011/12 Mar
Milled Production						
Bangladesh	28,800	31,000	31,000	33,200	34,000	34,000
Brazil	8,199	8,570	7,929	9,300	7,820	7,684
Burma	11,840	11,200	11,642	11,862	10,500	11,586
Cambodia	4,305	4,592	4,856	5,283	5,300	5,384
China	130,224	134,330	136,570	137,000	140,500	140,500
Egypt	4,655	4,673	4,564	3,291	4,300	4,564
India	96,690	99,180	89,090	95,980	102,000	102,750
Indonesia	37,000	38,310	36,370	35,500	37,300	37,300
Japan	7,930	8,029	7,711	7,720	7,646	7,646
Korea, South	4,408	4,843	4,916	4,295	4,224	4,224
Pakistan	5,700	6,900	6,800	5,000	6,550	6,550
Philippines	10,479	10,755	9,772	10,539	10,640	10,556
Sri Lanka	2,200	2,227	2,650	2,400	2,900	2,900
Thailand	19,800	19,850	20,260	20,262	20,300	20,300
Vietnam	24,375	24,393	24,993	26,300	26,150	26,150
Others	31,483	34,212	36,437	37,693	36,748	37,432
Subtotal	428,088	443,064	435,560	445,625	456,878	459,526
United States	6,288	6,546	7,133	7,593	5,874	5,874
World Total	434,376	449,610	442,693	453,218	462,752	465,400
Consumption and Residual						
Bangladesh	30,747	31,000	31,600	34,000	34,500	34,500
Brazil	8,350	8,400	8,477	8,400	8,100	8,100
Burma	11,359	10,698	10,942	11,012	10,000	11,086
Cambodia	3,855	3,842	3,886	4,303	4,320	4,404
China	127,450	133,000	134,320	135,000	138,500	138,500
Egypt	3,610	4,270	3,940	3,590	3,800	4,060
India	90,466	91,090	85,508	90,180	94,000	95,250
Indonesia	36,350	37,100	38,000	39,000	39,550	39,550
Iran	3,000	3,100	2,950	2,900	3,000	3,000
Japan	8,162	8,326	8,200	8,125	8,250	8,250
Korea, South	4,670	4,788	4,765	4,947	4,800	4,800
Nigeria	4,000	4,220	4,580	5,030	4,879	5,000
Philippines	13,499	13,100	13,125	12,900	13,000	12,900
Thailand	9,600	9,500	10,200	10,500	11,500	11,500
Vietnam	19,400	19,000	19,150	19,400	19,750	19,750
Others	49,179	50,773	53,113	54,153	54,927	55,390
Subtotal	425,471	433,955	436,055	445,247	455,947	458,963
United States	4,042	4,082	4,016	4,358	3,912	3,912
World Total	429,513	438,037	440,071	449,605	459,859	462,875
Ending Stocks						
China	37,762	38,546	40,534	42,572	44,447	44,447
India	13,000	19,000	20,500	23,500	24,500	24,500
Indonesia	5,607	7,057	6,577	5,852	4,602	4,602
Japan	2,556	2,715	2,693	2,788	2,734	2,734
Philippines	4,418	4,673	3,520	2,459	1,574	1,615
Thailand	2,707	4,787	6,100	5,562	7,962	7,962
Vietnam	2,018	1,961	1,470	1,870	2,170	2,170
Others	10,990	11,850	11,610	11,684	10,878	11,011
Subtotal	79,058	90,589	93,004	96,287	98,867	99,041
United States	935	977	1,184	1,514	1,253	1,285
World Total	79,993	91,566	94,188	97,801	100,120	100,326

Note: All data are reported on a milled basis.

Regional Rice Imports, Production, Consumption, and Stocks

Thousand Metric Tons

	2007/08	2008/09	2009/10	2010/11	Feb 2011/12	Mar 2011/12
TY Imports						
North America	1,594	1,614	1,495	1,741	1,715	1,740
Caribbean	1,028	906	989	1,155	1,015	1,015
South America	1,105	1,116	1,377	1,384	1,377	1,417
Other Europe	98	126	126	135	135	135
Former Soviet Union - 12	361	412	401	327	330	330
Middle East	5,519	5,349	5,239	5,625	5,850	5,850
North Africa	275	155	345	390	855	855
Sub-Saharan Africa	7,569	8,175	8,248	9,260	9,185	9,185
East Asia	1,639	1,877	1,961	2,415	2,105	2,105
South Asia	2,208	528	1,013	1,918	990	990
Southeast Asia	4,640	4,542	5,562	6,063	4,535	4,490
Others	2,469	2,217	2,099	2,004	1,835	1,835
Total	28,505	27,017	28,855	32,417	29,927	29,947
Production						
North America	6,472	6,707	7,315	7,739	5,979	5,982
Caribbean	780	833	954	938	1,017	992
South America	15,671	16,459	15,664	17,367	15,122	15,096
European Union	1,906	1,760	2,052	2,029	1,899	2,063
Former Soviet Union - 12	986	906	1,101	1,257	1,224	1,220
Middle East	2,360	2,075	2,049	2,113	2,060	2,112
North Africa	4,675	4,693	4,598	3,330	4,339	4,603
Sub-Saharan Africa	8,302	10,488	11,646	12,547	12,269	12,502
East Asia	145,044	150,087	152,218	151,631	155,066	155,066
South Asia	136,559	142,423	132,765	139,746	148,700	149,439
Southeast Asia	111,052	112,489	111,528	113,279	113,671	114,909
Others	569	690	803	1,242	1,406	1,416
Total	434,376	449,610	442,693	453,218	462,752	465,400
Domestic Consumption						
North America	5,136	5,177	5,160	5,544	5,147	5,150
Central America	1,109	1,104	1,130	1,139	1,146	1,161
Caribbean	1,923	1,784	1,892	2,045	2,031	2,006
South America	14,406	14,782	14,915	14,888	14,350	14,478
European Union	3,334	3,065	3,025	3,062	2,830	2,994
Former Soviet Union - 12	1,301	1,242	1,285	1,399	1,367	1,363
Middle East	7,587	7,627	7,555	7,673	7,855	7,905
North Africa	3,905	4,402	4,307	3,979	4,194	4,454
Sub-Saharan Africa	16,713	17,646	19,681	21,475	21,502	21,727
East Asia	143,281	149,584	150,804	151,343	154,885	154,885
South Asia	129,820	131,361	126,156	132,591	137,650	138,889
Southeast Asia	98,534	97,949	100,243	101,994	103,126	104,228
Others	690	566	619	666	705	712
Total	427,739	436,289	436,772	447,798	456,788	459,952
Ending Stocks						
North America	1,128	1,143	1,322	1,727	1,409	1,441
Central America	264	223	246	262	254	252
Caribbean	141	114	126	137	152	143
South America	1,750	2,230	1,859	2,126	1,538	1,546
European Union	1,126	1,020	1,120	987	876	876
Middle East	2,171	1,997	1,659	1,523	1,476	1,485
North Africa	691	564	498	159	557	563
Sub-Saharan Africa	992	991	1,019	1,247	1,167	1,177
East Asia	41,284	42,488	45,038	46,971	48,577	48,577
South Asia	14,306	21,393	22,431	25,571	26,751	26,751
Southeast Asia	15,950	19,249	18,669	16,866	17,133	17,285
Oceania	52	26	46	45	53	53
Others	138	128	155	180	177	177
Total	79,993	91,566	94,188	97,801	100,120	100,326

NOTES: Regional definitions appear on last page of this circular. Imports are reported on a trade year basis. All other data are reported using local marketing years.

COARSE GRAINS: WORLD MARKETS AND TRADE

OVERVIEW

Global coarse grains trade for 2011/12 is up 1.3 million tons brought on by expanded exports from Brazil and Australia. World corn production is raised slightly led by better Brazilian corn crop prospects. U.S. corn exports and the U.S. corn season-average farm price are unchanged.

PRICES

U.S. corn export quotes were mostly unchanged during the past month. Prices ended at \$285/ton, only \$2/ton higher than at the time of the February WASDE release. However, the discount between U.S. and Argentine prices has narrowed by about \$10/ton throughout the past 2 months and Argentine corn is again priced at a premium to Brazilian corn which is typical for this time of year.

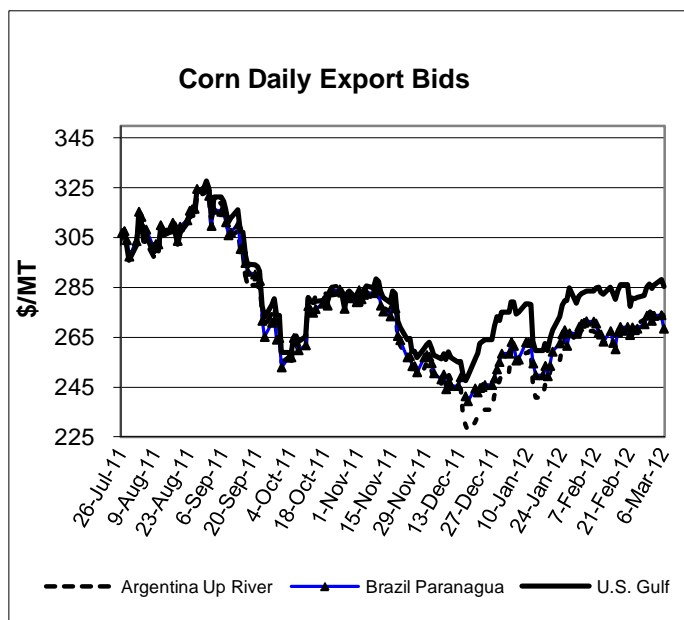
TRADE CHANGES IN 2011/12

Selected Exporters

- **Brazilian corn** is boosted 500,000 tons to 9.5 million due to better prospects for second-crop corn.
- **Indian corn** is raised 200,000 tons to 2.4 million evidenced by strong early-season sales to Southeast Asian markets.
- **Australian barley** is up 400,000 tons to 4.0 million on greater demand from China.
- **Canadian oats** are raised 200,000 tons to 1.7 million in light of limited supplies in the United States. (U.S. oats imports are up 200,000 tons to 1.7 million.)

Selected Importers

- **EU corn** is boosted 500,000 tons to 4.5 million based on the pace of licenses and shipments to date.
- **Malaysian corn** is cut 200,000 tons to 3.1 million as a result of a slower-than-normal pace.
- **Peruvian corn** is up 200,000 tons to 1.8 million caused by strong feed demand.



-
- **Iranian barley** is raised 300,000 tons to 700,000 as a result of recent shipments from Kazakhstan.
 - **Chinese barley** is 200,000 tons higher, to 2.0 million, on the pace of shipments of malting barley from Australia.

World Coarse Grain Trade
October/September Year, Thousand Metric Tons

	2007/08	2008/09	2009/10	2010/11	2011/12 Feb	2011/12 Mar
TY Exports						
Argentina	17,786	10,241	19,028	18,562	18,905	18,905
Australia	3,895	4,873	4,414	4,902	5,010	5,425
Brazil	8,032	7,187	8,627	11,592	9,005	9,505
Canada	6,379	3,852	3,068	4,427	3,125	3,325
EU-27	4,679	4,338	4,267	5,861	5,555	5,555
India	5,539	2,642	2,072	3,180	2,300	2,450
Paraguay	1,473	1,864	1,392	1,208	1,805	1,805
Russia	1,419	4,945	2,528	1,028	3,555	3,605
South Africa	1,145	2,159	1,634	2,859	2,020	2,020
Ukraine	5,909	11,380	10,936	7,456	17,410	17,410
Others	4,315	5,634	7,059	5,517	5,975	5,975
Subtotal	60,571	59,115	65,025	66,592	74,665	75,980
United States	68,289	51,558	53,989	49,269	45,400	45,400
World Total	128,860	110,673	119,014	115,861	120,065	121,380
TY Imports						
Algeria	2,433	2,067	2,576	2,962	3,100	3,100
Brazil	1,258	1,497	1,049	842	1,155	1,155
Canada	3,187	1,900	2,011	1,045	1,065	1,065
Chile	1,969	1,317	1,275	1,280	1,425	1,425
China	1,157	1,651	3,777	2,697	5,925	6,125
Colombia	3,603	3,483	4,102	4,147	4,455	4,455
Dominican Republic	1,074	973	1,071	1,050	1,050	1,050
Egypt	4,182	5,093	5,897	5,849	6,075	6,075
EU-27	19,892	2,988	3,012	8,609	4,455	5,005
Indonesia	294	317	1,321	2,500	1,500	1,500
Iran	3,900	5,000	5,100	3,900	3,900	4,200
Israel	1,776	1,295	1,592	1,481	1,410	1,410
Japan	19,210	19,611	19,198	18,599	19,035	19,035
Jordan	889	785	713	911	1,000	1,000
Korea, South	9,358	7,248	8,509	8,169	8,060	8,060
Malaysia	3,181	2,447	3,107	2,800	3,300	3,100
Mexico	11,011	10,465	10,913	10,767	11,525	11,525
Morocco	2,180	1,833	2,202	2,122	2,250	2,250
Peru	1,592	1,520	1,886	2,024	1,700	1,900
Saudi Arabia	9,968	9,186	9,076	8,138	9,505	9,505
Syria	2,561	2,834	2,274	1,952	2,100	2,100
Taiwan	4,684	4,658	4,663	4,311	4,450	4,450
Tunisia	1,182	875	1,202	1,200	1,000	1,000
Venezuela	1,103	1,340	2,198	1,251	1,600	1,600
Vietnam	700	1,250	1,600	1,200	1,300	1,300
Others	14,263	13,709	13,024	12,655	12,416	12,431
Subtotal	126,607	105,342	113,348	112,461	114,756	115,821
Unaccounted	-1,357	2,524	3,391	951	2,984	3,009
United States	3,610	2,807	2,275	2,449	2,325	2,550
World Total	128,860	110,673	119,014	115,861	120,065	121,380

TY=Trade Year, see Endnotes.

World Coarse Grains Production, Consumption, and Stocks
Local Marketing Years, Thousand Metric Tons

	2007/08	2008/09	2009/10	2010/11	2011/12 Feb	2011/12 Mar
Production						
Argentina	27,118	19,634	28,531	31,808	30,810	30,610
Australia	12,895	12,282	10,920	11,762	13,107	13,227
Brazil	60,520	53,486	58,412	60,480	63,833	64,833
Canada	27,841	27,184	22,477	22,263	21,866	21,866
China	158,863	172,424	169,604	182,877	198,060	197,960
Ethiopia	8,302	9,034	8,046	9,925	9,025	9,025
EU-27	136,580	162,102	155,038	139,460	147,237	147,237
India	40,630	39,550	33,890	43,370	40,370	41,760
Indonesia	8,500	8,700	6,900	6,800	8,100	8,100
Mexico	30,578	32,252	27,254	29,372	27,778	27,778
Nigeria	24,000	26,670	28,150	28,740	27,900	27,900
Russia	29,171	40,881	31,843	16,416	32,796	32,796
South Africa	13,690	13,084	13,881	11,327	12,951	12,451
Turkey	9,445	10,408	11,176	10,095	10,695	10,695
Ukraine	14,592	26,275	24,143	21,442	32,900	32,900
Others	128,155	131,236	136,416	143,231	141,068	140,829
Subtotal	730,880	785,202	766,681	769,368	818,496	819,967
United States	349,861	325,867	348,755	330,236	323,697	323,697
World Total	1,080,741	1,111,069	1,115,436	1,099,604	1,142,193	1,143,664
Domestic Consumption						
Argentina	9,367	8,768	10,054	11,358	11,615	11,615
Brazil	44,605	48,191	49,714	52,733	55,248	55,248
Canada	24,023	22,892	22,216	20,918	20,086	20,086
China	157,783	161,100	172,975	183,840	199,340	199,140
Egypt	11,477	12,162	13,072	13,595	11,550	11,550
EU-27	154,855	151,855	150,080	151,940	148,005	149,055
India	35,500	36,500	32,000	39,050	38,600	39,650
Iran	8,770	8,920	9,370	9,370	9,470	9,570
Japan	19,460	19,965	19,645	18,730	19,266	19,266
Mexico	40,235	42,060	40,865	39,335	39,840	39,840
Nigeria	24,000	26,550	27,950	28,550	28,050	28,050
Russia	28,617	33,011	30,440	18,131	28,078	28,078
South Africa	10,143	10,468	10,833	11,028	10,983	11,083
Turkey	10,565	10,700	10,870	10,895	11,350	11,350
Ukraine	11,934	13,696	12,964	13,792	14,700	14,700
Others	191,380	195,754	198,151	205,912	210,031	209,513
Subtotal	783,286	804,955	819,014	830,797	859,081	861,194
United States	274,533	275,978	295,337	297,973	290,807	290,844
World Total	1,057,819	1,080,933	1,114,351	1,128,770	1,149,888	1,152,038
Ending Stocks						
Brazil	12,703	12,450	10,287	10,132	10,567	10,567
Canada	4,010	6,326	5,650	3,529	3,199	2,999
China	39,404	52,158	52,359	53,905	58,702	58,585
EU-27	12,726	20,844	25,854	15,678	13,860	13,360
Iran	3,199	3,124	4,063	3,813	2,963	3,163
South Africa	3,266	4,327	5,367	3,642	3,595	3,095
Ukraine	1,659	2,374	2,209	2,094	3,171	3,214
Others	42,193	45,692	41,518	41,193	39,567	39,976
Subtotal	119,160	147,295	147,307	133,986	135,624	134,959
United States	45,059	47,060	48,133	32,288	22,868	22,941
World Total	164,219	194,355	195,440	166,274	158,492	157,900

Regional Coarse Grains Imports, Production, Consumption, and Stocks

Thousand Metric Tons

	2007/08	2008/09	2009/10	2010/11	Feb 2011/12	Mar 2011/12
TY Imports						
North America	17,808	15,172	15,199	14,261	14,915	15,140
Central America	2,681	2,491	2,537	2,755	2,950	2,950
Caribbean	2,239	2,011	2,139	2,200	2,210	2,210
South America	10,328	9,745	11,108	10,583	10,945	11,245
European Union	19,892	2,988	3,012	8,609	4,455	5,005
Former Soviet Union - 12	1,062	664	451	1,168	585	600
Middle East	21,810	21,247	21,318	18,475	20,050	20,350
North Africa	10,757	10,592	13,115	12,958	13,175	13,175
Sub-Saharan Africa	3,009	3,735	2,826	1,775	2,235	2,235
East Asia	34,662	33,349	36,276	33,906	37,600	37,800
Southeast Asia	4,746	5,405	6,725	7,208	7,115	6,815
Others	1,223	750	917	1,012	846	846
Total	130,217	108,149	115,623	114,910	117,081	118,371
Production						
North America	408,280	385,303	398,486	381,871	373,341	373,341
South America	99,917	84,977	98,905	104,395	107,449	107,986
European Union	136,580	162,102	155,038	139,460	147,237	147,237
Other Europe	9,370	12,357	11,800	12,190	11,597	11,597
Former Soviet Union - 12	54,191	78,966	67,580	47,573	78,370	78,527
Middle East	18,594	15,827	18,829	18,499	18,391	18,391
North Africa	9,894	10,219	14,891	12,359	9,722	9,722
Sub-Saharan Africa	90,972	96,200	97,111	104,851	102,196	101,696
East Asia	160,959	174,500	171,360	184,781	200,171	199,938
South Asia	47,105	45,688	40,331	49,728	46,653	48,043
Southeast Asia	26,882	27,710	25,386	27,186	29,010	29,010
Oceania	13,542	12,929	11,567	12,409	13,754	13,874
Others	4,455	4,291	4,152	4,302	4,302	4,302
Total	1,080,741	1,111,069	1,115,436	1,099,604	1,142,193	1,143,664
Domestic Consumption						
North America	338,791	340,930	358,418	358,226	350,733	350,770
South America	73,397	76,040	79,382	84,530	87,693	87,923
European Union	154,855	151,855	150,080	151,940	148,005	149,055
Other Europe	10,423	10,895	10,757	10,877	10,811	10,811
Former Soviet Union - 12	50,587	58,063	55,005	41,746	54,506	54,666
Middle East	38,192	37,833	38,469	37,613	38,984	39,084
North Africa	21,142	21,187	24,679	25,781	24,035	24,035
Sub-Saharan Africa	88,683	96,224	95,922	103,962	101,389	101,489
East Asia	192,538	195,743	207,477	217,085	233,150	232,817
South Asia	42,183	42,673	38,599	45,538	45,013	46,063
Southeast Asia	29,476	30,277	31,158	32,965	34,810	34,410
Oceania	7,666	7,897	7,702	7,649	8,452	8,077
Others	9,314	8,953	8,888	9,238	9,438	9,438
Total	1,057,247	1,078,570	1,106,536	1,127,150	1,147,019	1,148,638
Ending Stocks						
North America	53,810	58,626	55,725	38,450	28,063	27,936
South America	19,607	16,652	14,859	15,297	15,410	15,389
European Union	12,726	20,844	25,854	15,678	13,860	13,360
Other Europe	1,340	1,517	1,653	1,668	1,455	1,455
Former Soviet Union - 12	4,801	9,318	7,326	5,639	7,800	7,830
Middle East	8,663	8,496	9,390	7,991	7,383	7,583
North Africa	2,443	2,743	5,401	4,959	3,896	3,896
Sub-Saharan Africa	7,775	9,545	10,817	10,290	9,896	9,297
East Asia	43,953	55,888	55,842	57,256	62,017	61,912
South Asia	1,821	2,086	1,670	2,835	1,922	2,490
Southeast Asia	3,475	4,446	3,329	3,600	3,768	3,765
Oceania	2,737	3,352	2,785	1,833	2,240	2,205
Others	1,068	842	789	778	782	782
Total	164,219	194,355	195,440	166,274	158,492	157,900

NOTES: Regional definitions appear on last page of this circular. Imports are reported on a trade year basis. All other data are reported using local marketing years.

World Corn Trade
October/September Year, Thousand Metric Tons

	2007/08	2008/09	2009/10	2010/11	2011/12 Feb	2011/12 Mar
TY Exports						
Argentina	15,676	8,458	16,971	15,159	14,000	14,000
Brazil	7,883	7,178	8,623	11,583	9,000	9,500
Canada	944	366	184	1,657	500	500
EU-27	591	1,743	1,519	1,078	2,500	2,500
India	5,077	2,551	1,917	3,100	2,200	2,400
Paraguay	1,461	1,862	1,388	1,203	1,800	1,800
Russia	49	1,331	427	37	1,200	1,200
Serbia	128	1,467	1,343	2,004	1,600	1,600
South Africa	1,124	2,111	1,586	2,839	2,000	2,000
Ukraine	2,074	5,497	5,072	5,008	14,000	14,000
Others	2,616	3,641	4,199	2,717	3,300	3,315
Subtotal	37,623	36,205	43,229	46,385	52,100	52,815
United States	60,663	47,758	49,721	45,254	43,500	43,500
World Total	98,286	83,963	92,950	91,639	95,600	96,315
TY Imports						
Algeria	2,166	1,903	2,569	2,700	2,600	2,600
Brazil	961	1,092	699	474	800	800
Canada	3,117	1,844	1,961	974	1,000	1,000
Chile	1,628	839	663	526	800	800
China	41	47	1,296	979	4,000	4,000
Colombia	3,267	3,068	3,651	3,504	3,900	3,900
Cuba	811	708	736	800	800	800
Dominican Republic	1,074	973	1,071	1,050	1,050	1,050
Egypt	4,151	5,031	5,832	5,803	6,000	6,000
EU-27	14,016	2,754	2,931	7,359	4,000	4,500
Indonesia	294	317	1,321	2,500	1,500	1,500
Iran	2,900	3,600	4,300	3,500	3,500	3,500
Israel	1,374	846	1,053	1,050	1,100	1,100
Japan	16,614	16,533	15,979	15,655	16,100	16,100
Korea, South	9,311	7,188	8,461	8,107	8,000	8,000
Malaysia	3,181	2,447	3,107	2,800	3,300	3,100
Mexico	9,556	7,764	8,298	8,257	9,800	9,800
Morocco	1,858	1,566	1,802	1,800	1,900	1,900
Peru	1,469	1,429	1,782	1,939	1,600	1,800
Saudi Arabia	1,961	1,482	1,872	1,933	2,000	2,000
Syria	1,661	1,784	2,024	1,659	1,600	1,600
Taiwan	4,527	4,532	4,521	4,161	4,300	4,300
Thailand	425	900	500	600	800	800
Venezuela	1,103	1,336	2,198	1,251	1,600	1,600
Vietnam	700	1,250	1,600	1,200	1,300	1,300
Others	11,289	10,621	9,882	9,390	9,705	9,720
Subtotal	99,455	81,854	90,109	89,971	93,055	93,570
Unaccounted	-1,670	1,772	2,604	984	2,045	2,245
United States	501	337	237	684	500	500
World Total	98,286	83,963	92,950	91,639	95,600	96,315

TY=Trade Year, see Endnotes.

The large, negative Unaccounted in 2007/08 arises largely from timing differences between declared exports and Japan's and Korea's declared imports.

World Corn Production, Consumption, and Stocks
Local Marketing Years, Thousand Metric Tons

	2007/08	2008/09	2009/10	2010/11	2011/12 Feb	2011/12 Mar
Production						
Argentina	22,017	15,500	23,300	23,750	22,000	22,000
Brazil	58,600	51,000	56,100	57,500	61,000	62,000
Canada	11,649	10,592	9,561	11,714	10,700	10,700
China	152,300	165,914	163,974	177,245	191,750	191,750
EU-27	47,555	62,321	56,947	55,795	64,524	64,524
India	18,960	19,730	16,720	21,730	21,000	21,500
Indonesia	8,500	8,700	6,900	6,800	8,100	8,100
Mexico	23,600	24,226	20,374	21,130	20,500	20,500
Nigeria	6,500	7,970	8,950	9,340	8,700	8,700
Philippines	7,277	6,853	6,231	7,271	7,140	7,140
Russia	3,798	6,682	3,963	3,075	6,680	6,680
Serbia	4,054	6,130	6,400	6,800	6,267	6,267
South Africa	13,164	12,567	13,420	10,924	12,500	12,000
Ukraine	7,421	11,447	10,486	11,919	22,500	22,500
Vietnam	4,600	4,432	4,607	5,000	5,400	5,400
Others	73,526	77,945	78,752	83,080	81,428	81,278
Subtotal	463,521	492,009	486,685	513,073	550,189	551,039
United States	331,177	307,142	332,549	316,165	313,918	313,918
World Total	794,698	799,151	819,234	829,238	864,107	864,957
Total Consumption						
Argentina	6,800	6,400	6,900	7,300	7,700	7,700
Brazil	42,500	45,500	47,000	49,500	52,000	52,000
Canada	13,769	11,687	11,606	11,434	11,100	11,100
China	150,000	153,000	165,000	176,000	191,000	191,000
Egypt	10,400	11,100	12,000	12,500	10,400	10,400
EU-27	64,000	61,600	59,300	62,500	64,900	65,900
India	14,200	17,000	15,100	18,300	18,900	19,200
Indonesia	8,500	8,900	8,800	9,200	9,500	9,500
Japan	16,600	16,700	16,300	15,600	16,100	16,100
Korea, South	8,638	7,894	8,382	8,223	8,100	8,100
Mexico	32,000	32,400	30,200	29,000	30,300	30,300
Nigeria	6,550	7,900	8,800	9,200	8,900	8,900
Philippines	7,150	7,300	6,500	7,200	7,300	7,200
South Africa	9,600	9,900	10,300	10,500	10,500	10,600
Ukraine	5,750	5,850	5,700	6,550	8,250	8,250
Others	114,817	118,992	122,050	126,411	131,009	131,009
Subtotal	511,660	523,961	541,005	559,347	588,053	589,953
United States	261,632	259,272	281,590	285,005	279,540	279,540
World Total	773,292	783,233	822,595	844,352	867,593	869,493
Ending Stocks						
Argentina	2,190	976	879	1,339	1,399	1,649
Brazil	12,579	12,084	9,989	9,789	10,289	10,289
China	38,394	51,183	51,302	53,415	57,965	57,965
EU-27	4,417	6,149	5,208	4,784	5,908	5,408
Iran	2,474	2,502	2,795	2,345	1,695	1,695
Mexico	4,131	3,559	1,389	1,689	1,589	1,589
South Africa	3,090	4,113	5,169	3,493	3,418	2,918
Others	23,093	24,471	24,069	23,568	22,734	22,669
Subtotal	90,368	105,037	100,800	100,422	104,997	104,182
United States	41,255	42,504	43,380	28,644	20,348	20,348
World Total	131,623	147,541	144,180	129,066	125,345	124,530

Regional Corn Imports, Production, Consumption, and Stocks

Thousand Metric Tons

	2007/08	2008/09	2009/10	2010/11	Feb 2011/12	Mar 2011/12
TY Imports						
North America	13,174	9,945	10,496	9,915	11,300	11,300
Central America	2,678	2,491	2,537	2,750	2,950	2,950
South America	9,115	8,238	9,469	8,493	9,130	9,430
European Union	14,016	2,754	2,931	7,359	4,000	4,500
Former Soviet Union - 12	651	393	254	314	200	215
Middle East	10,116	9,462	11,215	9,978	10,075	10,075
North Africa	9,593	9,574	11,725	11,528	11,850	11,850
Sub-Saharan Africa	2,174	2,915	1,909	1,261	1,635	1,635
East Asia	30,746	28,481	30,386	29,032	32,530	32,530
Southeast Asia	4,715	5,391	6,709	7,198	7,105	6,805
Caribbean	2,239	2,011	2,139	2,200	2,210	2,210
Others	739	536	576	627	570	570
Total	99,956	82,191	90,346	90,655	93,555	94,070
Production						
North America	366,426	341,960	362,484	349,009	345,118	345,118
South America	90,887	76,109	89,367	91,343	93,635	94,392
European Union	47,555	62,321	56,947	55,795	64,524	64,524
Other Europe	7,239	9,965	9,685	10,135	9,502	9,502
Former Soviet Union - 12	13,749	21,741	17,690	18,493	33,327	33,350
Middle East	6,062	6,529	6,163	5,806	5,798	5,798
North Africa	6,376	6,847	6,482	6,702	4,002	4,002
Sub-Saharan Africa	47,156	49,421	53,837	54,938	55,623	55,123
East Asia	154,009	167,580	165,379	178,883	193,401	193,401
South Asia	24,090	24,780	21,840	26,800	26,070	26,570
Central America	3,285	3,222	3,041	3,188	3,188	3,188
Southeast Asia	26,659	27,485	25,162	26,966	28,790	28,790
Others	1,205	1,191	1,157	1,180	1,129	1,199
Total	794,698	799,151	819,234	829,238	864,107	864,957
Domestic Consumption						
North America	307,401	303,359	323,396	325,439	320,940	320,940
South America	65,837	67,579	70,189	73,690	77,040	77,290
European Union	64,000	61,600	59,300	62,500	64,900	65,900
Other Europe	7,766	8,351	8,354	8,525	8,485	8,485
Former Soviet Union - 12	12,720	14,455	12,965	13,285	17,335	17,360
Middle East	15,775	15,835	16,625	16,661	16,805	16,805
North Africa	15,750	16,125	17,650	18,600	16,600	16,600
Sub-Saharan Africa	44,068	48,948	51,050	54,425	54,119	54,219
East Asia	181,503	184,015	195,811	205,803	221,155	221,155
South Asia	19,531	22,050	20,320	23,470	24,070	24,370
Southeast Asia	29,249	30,043	30,943	32,750	34,600	34,200
Central America	5,900	5,800	5,700	5,925	6,125	6,125
Others	3,406	3,235	3,225	3,350	3,325	3,350
Total	772,906	781,395	815,528	844,423	865,499	866,799
Ending Stocks						
North America	46,843	47,896	46,527	31,611	23,315	23,315
South America	18,141	15,282	13,769	13,481	13,984	13,963
European Union	4,417	6,149	5,208	4,784	5,908	5,408
Other Europe	1,026	1,184	1,369	1,354	1,141	1,141
Former Soviet Union - 12	1,271	2,086	1,491	1,824	2,480	2,524
Middle East	4,041	4,029	4,513	3,688	2,741	2,741
North Africa	1,583	2,202	2,394	2,161	1,403	1,403
Sub-Saharan Africa	6,027	7,591	9,664	8,348	8,057	7,557
East Asia	42,373	54,297	54,100	56,101	60,677	60,677
South Asia	1,338	1,498	992	1,327	1,072	1,222
Southeast Asia	3,475	4,446	3,329	3,600	3,768	3,765
Central America	765	613	498	486	484	484
Others	323	268	326	301	315	330
Total	131,623	147,541	144,180	129,066	125,345	124,530

NOTES: Regional definitions appear on last page of this circular. Imports are reported on a trade year basis. All other data are reported using local marketing years.

World Barley Trade
October/September Year, Thousand Metric Tons

	2007/08	2008/09	2009/10	2010/11	2011/12 Feb	2011/12 Mar
TY Exports						
Argentina	937	871	549	1,531	2,900	2,900
Australia	3,377	3,278	3,846	4,088	3,600	4,000
Canada	2,947	1,618	1,203	1,052	1,000	1,000
China	81	17	13	9	15	15
Croatia	3	4	7	5	5	5
Egypt	67	7	14	5	10	10
EU-27	3,888	2,374	2,389	4,594	2,800	2,800
India	371	37	31	30	50	25
Kazakhstan	806	314	354	224	550	550
Kenya	2	1	2	5	5	5
Moldova	9	31	43	25	25	25
Russia	1,277	3,598	2,086	969	2,300	2,300
Serbia	4	11	22	15	5	5
Turkey	0	3	801	50	150	150
Ukraine	3,814	5,871	5,752	2,446	3,400	3,400
Others	110	10	13	15	0	0
Subtotal	17,693	18,045	17,125	15,063	16,815	17,190
United States	901	158	152	181	200	200
World Total	18,594	18,203	17,277	15,244	17,015	17,390
TY Imports						
Algeria	266	164	6	262	500	500
Brazil	285	403	346	363	350	350
China	1,091	1,551	2,341	1,656	1,800	2,000
Colombia	256	211	237	250	250	250
EU-27	519	156	66	286	350	350
Iran	1,000	1,400	800	400	400	700
Israel	251	367	491	287	250	250
Japan	1,361	1,346	1,411	1,361	1,300	1,300
Jordan	528	514	432	550	600	600
Kuwait	254	252	283	200	250	250
Libya	166	296	582	350	200	200
Morocco	313	263	256	222	250	250
Russia	179	39	13	411	200	200
Saudi Arabia	8,000	7,700	7,200	6,200	7,500	7,500
Syria	900	1,050	250	293	500	500
Others	2,101	1,592	1,754	2,026	1,515	1,515
Subtotal	17,470	17,304	16,468	15,117	16,215	16,715
Unaccounted	412	327	507	-21	600	475
United States	712	572	302	148	200	200
World Total	18,594	18,203	17,277	15,244	17,015	17,390

TY=Trade Year, see Endnotes.

World Barley Production, Consumption, and Stocks
Local Marketing Years, Thousand Metric Tons

	2007/08	2008/09	2009/10	2010/11	2011/12 Feb	2011/12 Mar
Production						
Algeria	950	560	2,400	1,500	1,350	1,350
Argentina	1,600	2,110	1,356	2,950	4,000	4,000
Australia	7,160	7,997	7,865	8,145	8,500	8,500
Belarus	1,911	2,212	2,123	1,966	1,800	1,800
Canada	10,984	11,781	9,517	7,605	7,760	7,760
China	2,785	2,823	2,318	1,972	2,600	2,500
Ethiopia	1,355	1,484	1,569	1,400	1,400	1,400
EU-27	57,545	65,509	62,149	53,028	52,254	52,254
India	1,330	1,200	1,690	1,350	1,570	1,660
Iran	3,104	1,547	3,446	3,500	3,000	3,000
Kazakhstan	2,441	2,059	2,519	1,313	2,593	2,593
Morocco	763	1,272	3,800	2,570	2,340	2,340
Russia	15,663	23,148	17,881	8,350	16,935	16,935
Turkey	6,000	5,700	6,500	5,900	6,500	6,500
Ukraine	5,981	12,612	11,833	8,484	9,000	9,000
Others	9,012	7,898	8,891	8,719	9,048	9,052
Subtotal	128,584	149,912	145,857	118,752	130,650	130,644
United States	4,575	5,230	4,949	3,925	3,392	3,392
World Total	133,159	155,142	150,806	122,677	134,042	134,036
Total Consumption						
Algeria	1,100	1,100	1,350	1,500	1,700	1,700
Australia	3,100	4,000	4,500	4,300	4,700	4,300
Belarus	2,000	2,200	2,200	2,000	2,000	2,000
Canada	7,916	9,065	8,504	7,584	7,300	7,300
China	3,900	4,200	4,400	4,150	4,500	4,300
EU-27	54,200	57,000	56,500	56,400	52,000	52,000
India	1,000	1,000	1,500	1,350	1,500	1,550
Iran	3,600	3,550	3,700	3,700	3,600	3,700
Japan	1,600	1,550	1,550	1,550	1,525	1,525
Kazakhstan	1,700	1,850	2,000	1,325	1,825	1,825
Morocco	1,800	1,700	2,900	3,050	3,150	3,150
Russia	15,050	17,100	16,650	9,500	14,300	14,300
Saudi Arabia	7,430	7,425	7,425	6,325	7,025	7,025
Turkey	6,100	5,700	5,900	6,000	6,450	6,450
Ukraine	5,000	5,900	5,600	6,000	5,000	5,000
Others	14,608	15,069	15,176	14,871	15,078	15,083
Subtotal	129,861	139,045	140,106	131,259	132,403	131,833
United States	4,324	5,127	4,604	4,537	4,354	4,354
World Total	134,185	144,172	144,710	135,796	136,757	136,187
Ending Stocks						
Algeria	333	184	1,258	1,337	1,587	1,587
Australia	1,662	2,425	1,875	1,056	1,256	1,256
EU-27	5,705	10,916	15,532	7,460	5,314	5,314
Iran	725	622	1,268	1,468	1,268	1,468
Russia	1,153	3,813	2,395	1,386	1,321	1,321
Saudi Arabia	2,428	2,203	2,078	1,253	1,728	1,728
Ukraine	710	1,055	1,067	794	1,699	1,699
Others	6,195	8,216	9,474	7,644	6,793	6,836
Subtotal	18,911	29,434	34,947	22,398	20,966	21,209
United States	1,485	1,932	2,515	1,945	983	983
World Total	20,396	31,366	37,462	24,343	21,949	22,192

Regional Barley Imports, Production, Consumption, and Stocks

Thousand Metric Tons

	2007/08	2008/09	2009/10	2010/11	Feb 2011/12	Mar 2011/12
TY Imports						
North America	933	737	373	227	300	300
South America	751	810	772	911	825	825
European Union	519	156	66	286	350	350
Other Europe	207	82	153	229	135	135
Former Soviet Union - 12	404	269	195	698	385	385
Middle East	11,506	11,681	10,046	8,341	9,900	10,200
North Africa	1,152	973	1,223	1,309	1,200	1,200
Sub-Saharan Africa	154	120	54	81	60	60
East Asia	2,550	3,000	3,861	3,138	3,225	3,425
South Asia	6	48	10	30	30	30
Oceania	0	0	17	15	5	5
Total	18,182	17,876	16,770	15,265	16,415	16,915
Production						
North America	16,212	17,822	14,966	12,311	11,715	11,715
South America	2,697	3,156	2,443	3,869	5,051	5,051
European Union	57,545	65,509	62,149	53,028	52,254	52,254
Other Europe	1,412	1,613	1,440	1,380	1,420	1,420
Former Soviet Union - 12	27,323	41,651	35,973	21,675	31,828	31,962
Middle East	11,030	8,004	11,320	11,370	11,270	11,270
North Africa	2,493	2,347	7,324	4,572	4,635	4,635
Sub-Saharan Africa	1,733	1,826	1,950	1,755	1,833	1,833
East Asia	3,149	3,210	2,646	2,215	3,034	2,804
South Asia	2,005	1,607	2,330	1,957	2,102	2,192
Oceania	7,560	8,397	8,265	8,545	8,900	8,900
Total	133,159	155,142	150,806	122,677	134,042	134,036
Domestic Consumption						
North America	13,040	15,042	13,858	12,871	12,354	12,354
South America	2,562	2,703	2,933	2,930	3,045	3,045
European Union	54,200	57,000	56,500	56,400	52,000	52,000
Other Europe	1,640	1,705	1,592	1,565	1,540	1,540
Former Soviet Union - 12	25,125	28,744	28,090	20,471	24,665	24,800
Middle East	20,777	20,556	20,403	19,473	20,781	20,881
North Africa	4,352	3,987	5,847	5,970	6,200	6,200
Sub-Saharan Africa	1,789	1,955	1,978	1,850	1,855	1,855
East Asia	5,763	6,006	6,195	5,900	6,405	6,075
South Asia	1,680	1,438	2,163	1,987	2,062	2,112
Oceania	3,500	4,400	4,900	4,725	5,100	4,700
Total	134,428	143,536	144,459	134,142	136,007	135,562
Ending Stocks						
North America	3,281	5,112	5,231	3,581	2,042	2,042
South America	460	766	601	767	598	598
European Union	5,705	10,916	15,532	7,460	5,314	5,314
Other Europe	279	279	238	268	273	273
Former Soviet Union - 12	2,631	5,701	4,449	3,054	3,990	4,026
Middle East	4,507	4,389	4,837	4,263	4,602	4,802
North Africa	818	511	2,963	2,740	2,465	2,465
Sub-Saharan Africa	214	204	233	224	257	257
East Asia	753	940	1,239	683	888	822
South Asia	50	87	224	214	226	299
Oceania	1,698	2,461	1,915	1,089	1,294	1,294
Total	20,396	31,366	37,462	24,343	21,949	22,192

NOTES: Regional definitions appear on last page of this circular. Imports are reported on a trade year basis. All other data are reported using local marketing years.

World Sorghum Trade
October/September Year, Thousand Metric Tons

	2007/08	2008/09	2009/10	2010/11	2011/12 Feb	2011/12 Mar
TY Exports						
Argentina	1,172	907	1,507	1,866	2,000	2,000
Australia	340	1,360	350	575	1,200	1,200
China	223	32	41	68	50	50
India	91	54	124	50	50	25
Kenya	1	0	39	25	25	25
Nigeria	50	50	50	50	50	50
South Africa	21	48	48	20	20	20
Others	277	45	73	52	55	55
Subtotal	2,175	2,496	2,232	2,706	3,450	3,425
United States	6,664	3,598	4,074	3,794	1,650	1,650
World Total	8,839	6,094	6,306	6,500	5,100	5,075
TY Imports						
Chile	268	404	568	729	600	600
China	12	14	83	4	75	75
Colombia	66	202	212	391	300	300
Ethiopia	30	140	125	50	50	50
EU-27	5,267	66	7	922	50	50
Japan	1,084	1,629	1,649	1,418	1,500	1,500
Mexico	1,156	2,496	2,527	2,381	1,600	1,600
Morocco	9	4	144	100	100	100
Sudan	300	300	400	200	300	300
Taiwan	83	72	71	75	75	75
Others	784	430	526	391	345	345
Subtotal	9,059	5,757	6,312	6,661	4,995	4,995
Unaccounted	-221	334	-6	-162	105	80
United States	1	3	0	1	0	0
World Total	8,839	6,094	6,306	6,500	5,100	5,075

TY=Trade Year, see Endnotes.

World Sorghum Production, Consumption, and Stocks
Local Marketing Years, Thousand Metric Tons

	2007/08	2008/09	2009/10	2010/11	2011/12 Feb	2011/12 Mar
Production						
Argentina	2,937	1,660	3,629	4,400	4,400	4,200
Australia	3,790	2,692	1,508	2,068	2,600	2,650
Brazil	1,441	2,004	1,854	2,314	2,200	2,200
Burkina	1,507	1,875	1,522	1,950	1,800	1,800
China	1,920	1,837	1,677	1,800	1,850	1,850
Egypt	900	900	900	900	900	900
Ethiopia	2,659	2,619	2,084	3,200	2,700	2,700
EU-27	525	517	621	621	751	751
India	7,930	7,250	6,700	7,000	6,800	6,100
Mali	901	930	980	925	850	850
Mexico	6,200	7,067	6,250	7,350	6,600	6,600
Niger	930	1,214	739	1,200	900	900
Nigeria	10,000	11,000	11,500	11,700	11,500	11,500
Sudan	4,500	4,192	2,630	4,606	3,800	3,800
Tanzania	900	700	710	850	740	740
Others	6,233	6,393	6,154	6,673	6,804	6,784
Subtotal	53,273	52,850	49,458	57,557	55,195	54,325
United States	12,636	11,998	9,728	8,779	5,447	5,447
World Total	65,909	64,848	59,186	66,336	60,642	59,772
Total Consumption						
Argentina	1,200	1,100	1,900	2,200	2,300	2,300
Australia	2,205	1,805	1,205	1,405	1,405	1,405
Brazil	1,375	1,875	1,875	2,275	2,275	2,275
Burkina	1,507	1,700	1,697	1,800	1,800	1,800
China	2,000	2,000	1,900	1,800	1,900	1,900
Egypt	900	950	900	900	950	950
Ethiopia	2,600	2,700	2,400	3,000	2,800	2,800
EU-27	6,305	905	630	1,540	805	805
India	7,900	7,200	6,600	6,800	6,800	6,300
Japan	1,100	1,600	1,650	1,420	1,500	1,500
Mali	901	930	980	925	850	850
Mexico	7,200	8,600	9,700	9,400	8,650	8,650
Niger	1,000	1,200	900	1,200	1,000	1,000
Nigeria	9,950	10,950	11,450	11,650	11,450	11,450
Sudan	5,000	4,500	3,400	4,500	4,100	4,100
Others	8,248	8,221	8,219	8,963	8,945	8,925
Subtotal	59,442	56,043	55,764	59,783	57,509	56,964
United States	5,081	8,319	5,859	5,312	3,937	3,937
World Total	64,523	64,362	61,623	65,095	61,446	60,901
Ending Stocks						
Argentina	746	194	152	602	502	502
Australia	791	678	681	544	639	589
China	637	456	275	211	225	186
Ethiopia	179	238	47	297	247	247
Mexico	373	1,336	413	744	294	294
Nigeria	200	200	200	200	200	200
Sudan	697	684	309	610	705	605
Others	1,084	1,357	971	1,432	925	902
Subtotal	4,707	5,143	3,048	4,640	3,737	3,525
United States	1,340	1,390	1,048	697	683	683
World Total	6,047	6,533	4,096	5,337	4,420	4,208

Regional Sorghum Imports, Production, Consumption, and Stocks

Thousand Metric Tons

	2007/08	2008/09	2009/10	2010/11	Feb 2011/12	Mar 2011/12
TY Imports						
North America	1,157	2,499	2,527	2,382	1,600	1,600
South America	432	665	848	1,155	965	965
European Union	5,267	66	7	922	50	50
Other Europe	142	0	17	25	20	20
Middle East	156	81	48	132	55	55
North Africa	11	45	166	121	125	125
Sub-Saharan Africa	663	667	842	408	515	515
East Asia	1,196	1,719	1,806	1,502	1,655	1,655
Southeast Asia	31	14	16	10	10	10
Others	5	4	35	5	0	0
Total	9,060	5,760	6,312	6,662	4,995	4,995
Production						
North America	18,836	19,065	15,978	16,129	12,047	12,047
Central America	396	298	326	329	329	329
Caribbean	128	128	128	128	128	128
South America	5,102	4,719	6,153	7,471	7,422	7,202
European Union	525	517	621	621	751	751
Middle East	859	654	602	640	640	640
North Africa	915	915	915	915	915	915
Sub-Saharan Africa	25,280	26,553	24,359	29,020	26,945	26,945
East Asia	1,940	1,857	1,697	1,820	1,870	1,870
South Asia	8,081	7,395	6,845	7,145	6,945	6,245
Southeast Asia	57	55	54	50	50	50
Oceania	3,790	2,692	1,508	2,068	2,600	2,650
Others	0	0	0	0	0	0
Total	65,909	64,848	59,186	66,336	60,642	59,772
Domestic Consumption						
North America	12,281	16,919	15,559	14,712	12,587	12,587
Central America	375	315	325	325	325	325
Caribbean	128	128	128	128	128	128
South America	3,793	4,766	5,318	6,304	6,352	6,332
European Union	6,305	905	630	1,540	805	805
Middle East	970	749	694	777	700	700
North Africa	924	965	1,012	1,040	1,065	1,065
Sub-Saharan Africa	26,013	26,891	25,909	28,524	27,595	27,595
East Asia	3,222	3,699	3,643	3,320	3,500	3,500
South Asia	8,053	7,349	6,780	6,945	6,945	6,445
Southeast Asia	61	64	45	45	40	40
Oceania	2,205	1,805	1,205	1,405	1,405	1,405
Others	142	0	17	25	20	20
Total	64,472	64,555	61,265	65,090	61,467	60,947
Ending Stocks						
North America	1,713	2,726	1,461	1,441	977	977
Central America	45	27	28	32	31	31
South America	880	491	394	899	728	719
European Union	71	34	24	22	13	13
Middle East	76	62	18	13	8	8
North Africa	41	29	43	57	27	27
Sub-Saharan Africa	1,514	1,727	896	1,694	1,558	1,459
East Asia	733	578	397	331	345	306
South Asia	183	181	154	304	94	79
Oceania	791	678	681	544	639	589
Others	0	0	0	0	0	0
Total	6,047	6,533	4,096	5,337	4,420	4,208

NOTES: Regional definitions appear on last page of this circular. Imports are reported on a trade year basis. All other data are reported using local marketing years.

World Oats Trade
October/September Year, Thousand Metric Tons

	2007/08	2008/09	2009/10	2010/11	2011/12 Feb	2011/12 Mar
TY Exports						
Argentina	1	5	1	6	5	5
Australia	174	161	211	211	200	200
Brazil	4	9	4	9	5	5
Canada	2,321	1,792	1,539	1,497	1,500	1,700
Chile	17	31	37	129	75	75
EU-27	133	103	216	113	150	150
Russia	7	2	4	1	5	5
Others	33	6	20	4	5	5
Subtotal	2,690	2,109	2,032	1,970	1,945	2,145
United States	53	38	38	37	45	45
World Total	2,743	2,147	2,070	2,007	1,990	2,190
TY Imports						
Algeria	1	0	1	0	0	0
Argentina	1	2	2	0	5	5
Bosnia and Herzegovina	3	2	3	5	5	5
Canada	17	14	21	18	15	15
China	13	39	57	58	50	50
Colombia	14	2	2	2	5	5
Ecuador	15	14	11	11	10	10
EU-27	2	4	2	6	5	5
Japan	68	46	56	64	60	60
Mexico	131	82	46	103	75	75
Norway	47	8	34	10	15	15
South Africa	18	33	21	25	25	25
Switzerland	56	52	49	49	50	50
Turkey	11	6	0	5	5	5
Uruguay	0	11	4	11	5	5
Others	11	3	1	13	0	0
Subtotal	408	318	310	380	330	330
Unaccounted	91	42	153	159	160	160
United States	2,244	1,787	1,607	1,468	1,500	1,700
World Total	2,743	2,147	2,070	2,007	1,990	2,190

TY=Trade Year, see Endnotes.

World Oats Production, Consumption, and Stocks
Local Marketing Years, Thousand Metric Tons

	2007/08	2008/09	2009/10	2010/11	2011/12 Feb	2011/12 Mar
Production						
Algeria	80	80	140	140	140	140
Argentina	472	291	182	660	345	345
Australia	1,502	1,160	1,162	1,141	1,650	1,650
Belarus	580	605	552	442	800	800
Brazil	238	239	253	379	370	370
Canada	4,696	4,273	2,906	2,480	3,000	3,000
Chile	384	344	381	564	500	500
China	350	300	410	420	420	420
EU-27	8,634	8,935	8,579	7,370	8,013	8,013
Kazakhstan	230	138	204	134	258	258
Norway	276	328	245	245	245	245
Russia	5,384	5,835	5,401	3,218	5,334	5,334
Serbia	120	120	120	120	120	120
Turkey	189	196	218	210	210	210
Ukraine	544	944	731	458	550	550
Others	462	485	485	466	470	470
Subtotal	24,141	24,273	21,969	18,447	22,425	22,425
United States	1,313	1,294	1,351	1,178	779	779
World Total	25,454	25,567	23,320	19,625	23,204	23,204
Total Consumption						
Algeria	86	80	140	141	140	140
Argentina	450	300	200	650	350	350
Australia	1,335	1,035	975	900	1,350	1,350
Belarus	575	600	575	475	775	775
Brazil	240	225	250	370	360	360
Canada	1,935	1,766	1,753	1,529	1,400	1,400
Chile	350	325	350	450	400	400
China	375	350	450	450	500	500
EU-27	8,650	8,500	8,100	7,800	7,800	7,800
Kazakhstan	215	135	210	130	225	225
Mexico	235	210	215	185	190	190
Norway	340	320	285	257	265	265
Russia	5,300	5,600	5,500	3,450	4,900	4,900
Turkey	200	210	215	215	215	215
Ukraine	550	925	725	475	550	550
Others	626	608	622	646	639	639
Subtotal	21,785	21,213	20,634	18,120	20,033	20,139
United States	3,161	2,968	3,011	2,789	2,696	2,708
World Total	24,946	24,181	23,645	20,909	22,729	22,847
Ending Stocks						
Argentina	100	89	70	74	69	69
Australia	183	147	126	159	259	259
Belarus	69	74	51	18	43	43
Canada	950	1,527	1,170	769	834	634
China	77	66	83	111	81	81
EU-27	625	972	1,224	687	755	755
Russia	266	499	397	167	596	596
Others	168	198	181	217	191	200
Subtotal	2,438	3,572	3,302	2,202	2,828	2,637
United States	969	1,221	1,166	982	831	904
World Total	3,407	4,793	4,468	3,184	3,659	3,541

Regional Oats Imports, Production, Consumption, and Stocks

Thousand Metric Tons

	2007/08	2008/09	2009/10	2010/11	Feb 2011/12	Mar 2011/12
TY Imports						
North America	2,392	1,883	1,674	1,589	1,590	1,790
South America	30	32	19	24	25	25
European Union	2	4	2	6	5	5
Other Europe	108	62	87	71	70	70
Former Soviet Union - 12	7	0	0	6	0	0
Middle East	11	6	0	5	5	5
North Africa	1	0	1	0	0	0
Sub-Saharan Africa	18	33	21	25	25	25
East Asia	81	85	113	122	110	110
Oceania	2	0	0	0	0	0
Total	2,652	2,105	1,917	1,848	1,830	2,030
Production						
North America	6,134	5,715	4,387	3,769	3,894	3,894
South America	1,117	897	857	1,644	1,256	1,256
European Union	8,634	8,935	8,579	7,370	8,013	8,013
Other Europe	553	605	522	522	522	522
Former Soviet Union - 12	6,743	7,527	6,893	4,257	6,947	6,947
Middle East	189	196	218	210	210	210
North Africa	110	110	170	170	170	170
Sub-Saharan Africa	45	45	45	45	45	45
East Asia	352	302	412	422	422	422
Oceania	1,577	1,235	1,237	1,216	1,725	1,725
Total	25,454	25,567	23,320	19,625	23,204	23,204
Domestic Consumption						
North America	5,331	4,944	4,979	4,503	4,286	4,298
South America	1,091	896	857	1,538	1,171	1,171
European Union	8,650	8,500	8,100	7,800	7,800	7,800
Other Europe	680	647	620	595	597	597
Former Soviet Union - 12	6,645	7,265	7,015	4,535	6,455	6,455
Middle East	200	210	215	215	215	215
North Africa	116	110	170	171	170	170
Sub-Saharan Africa	55	75	65	70	70	70
East Asia	445	400	505	510	566	566
Oceania	1,410	1,110	1,050	975	1,425	1,425
Total	24,623	24,157	23,576	20,912	22,755	22,767
Ending Stocks						
North America	1,928	2,756	2,343	1,756	1,670	1,543
South America	126	113	95	150	100	109
European Union	625	972	1,224	687	755	755
Other Europe	34	53	45	45	40	40
Former Soviet Union - 12	404	658	517	235	717	717
Middle East	5	2	5	5	5	5
North Africa	1	1	1	1	1	1
Sub-Saharan Africa	20	23	24	24	24	24
East Asia	81	68	88	122	88	88
Oceania	183	147	126	159	259	259
Total	3,407	4,793	4,468	3,184	3,659	3,541

NOTES: Regional definitions appear on last page of this circular. Imports are reported on a trade year basis. All other data are reported using local marketing years.

World Rye Trade
October/September Year, Thousand Metric Tons

	2007/08	2008/09	2009/10	2010/11	2011/12 Feb	2011/12 Mar
TY Exports						
Belarus	75	50	25	150	75	75
Canada	167	76	142	221	125	125
EU-27	59	114	136	71	100	100
Russia	86	14	11	21	50	100
Ukraine	0	6	93	2	5	5
Others	3	0	0	3	0	0
Subtotal	390	260	407	468	355	405
United States	8	6	4	3	5	5
World Total	398	266	411	471	360	410
TY Imports						
Albania	0	0	0	0	0	0
Argentina	0	0	0	0	0	0
Croatia	2	2	2	1	1	1
EU-27	88	8	6	36	50	100
Israel	7	11	9	19	10	10
Japan	83	57	103	101	75	75
Korea, South	6	7	7	11	5	5
Norway	11	11	14	12	10	10
Switzerland	4	4	6	2	5	5
Turkey	14	6	0	0	5	5
Others	0	3	2	150	0	0
Subtotal	215	109	149	332	161	211
Unaccounted	31	49	133	-9	74	49
United States	152	108	129	148	125	150
World Total	398	266	411	471	360	410

TY=Trade Year, see Endnotes.

World Rye Production, Consumption, and Stocks
Local Marketing Years, Thousand Metric Tons

	2007/08	2008/09	2009/10	2010/11	2011/12 Feb	2011/12 Mar
Production						
Argentina	77	55	55	40	50	50
Belarus	1,305	1,492	1,227	735	1,500	1,500
Canada	252	316	280	232	195	195
EU-27	7,679	9,262	9,952	7,796	6,884	6,884
Russia	3,909	4,505	4,333	1,642	2,969	2,969
Turkey	241	247	343	270	270	270
Ukraine	562	1,051	954	464	550	550
Others	209	190	202	168	154	154
Subtotal	14,234	17,118	17,346	11,347	12,572	12,572
United States	160	203	178	189	161	161
World Total	14,394	17,321	17,524	11,536	12,733	12,733
Total Consumption						
Argentina	77	55	55	40	50	50
Belarus	1,200	1,400	1,300	650	1,300	1,300
Canada	143	152	140	139	75	75
EU-27	7,300	8,750	9,550	8,200	7,300	7,350
Japan	90	65	90	100	75	75
Kazakhstan	65	40	75	40	30	30
Norway	61	59	40	38	37	37
Russia	3,750	4,400	4,325	1,850	2,900	2,900
Turkey	250	275	340	265	270	270
Ukraine	550	800	800	650	600	600
Others	122	127	124	129	120	120
Subtotal	13,663	16,181	16,909	12,136	12,829	12,854
United States	335	292	273	330	280	305
World Total	13,998	16,473	17,182	12,466	13,109	13,159
Ending Stocks						
Belarus	200	242	144	79	204	204
Canada	35	123	139	41	36	36
EU-27	1,017	1,424	1,727	1,236	770	770
Japan	13	5	18	19	19	19
Russia	223	312	308	250	269	219
Turkey	34	14	17	22	27	27
Ukraine	68	313	411	189	134	134
Others	5	7	7	9	7	7
Subtotal	1,595	2,440	2,771	1,845	1,466	1,416
United States	10	13	24	20	23	23
World Total	1,605	2,453	2,795	1,865	1,489	1,439

Regional Rye Imports, Production, Consumption, and Stocks

Thousand Metric Tons

	2007/08	2008/09	2009/10	2010/11	Feb 2011/12	Mar 2011/12
TY Imports						
North America	152	108	129	148	125	150
South America	0	0	0	0	0	0
European Union	88	8	6	36	50	100
Other Europe	17	18	22	15	16	16
Former Soviet Union - 12	0	2	2	150	0	0
Middle East	21	17	9	19	15	15
Sub-Saharan Africa	0	0	0	0	0	0
East Asia	89	64	110	112	80	80
Oceania	0	0	0	0	0	0
Total	367	217	278	480	286	361
Production						
North America	412	519	458	421	356	356
South America	84	63	61	45	55	55
European Union	7,679	9,262	9,952	7,796	6,884	6,884
Other Europe	111	119	98	98	98	98
Former Soviet Union - 12	5,844	7,088	6,589	2,883	5,047	5,047
Middle East	241	247	343	270	270	270
Sub-Saharan Africa	3	3	3	3	3	3
East Asia	0	0	0	0	0	0
Oceania	20	20	20	20	20	20
Total	14,394	17,321	17,524	11,536	12,733	12,733
Domestic Consumption						
North America	478	444	413	469	355	380
South America	84	63	61	45	55	55
European Union	7,300	8,750	9,550	8,200	7,300	7,350
Other Europe	140	137	119	112	114	114
Former Soviet Union - 12	5,565	6,640	6,500	3,190	4,830	4,830
Middle East	257	286	349	284	280	280
Sub-Saharan Africa	3	3	3	3	3	3
East Asia	96	72	97	111	80	80
Oceania	20	20	20	17	20	20
Total	13,943	16,415	17,112	12,431	13,037	13,112
Ending Stocks						
North America	45	136	163	61	59	59
South America	0	0	0	0	0	0
European Union	1,017	1,424	1,727	1,236	770	770
Other Europe	1	1	1	1	1	1
Former Soviet Union - 12	495	873	869	526	613	563
Middle East	34	14	17	22	27	27
Sub-Saharan Africa	0	0	0	0	0	0
East Asia	13	5	18	19	19	19
Oceania	0	0	0	0	0	0
Total	1,605	2,453	2,795	1,865	1,489	1,439

NOTES: Regional definitions appear on last page of this circular. Imports are reported on a trade year basis. All other data are reported using local marketing years.



HISTORICAL DATA SERIES FOR SELECTED REGIONS AND COUNTRIES

CONTENTS

European Union: Grain Supply and Demand.....	35
China: Grain Supply and Demand.....	36
Other Europe: Grain Supply and Demand	37
Former Soviet Union: Grain Supply and Demand	38
Wheat Supply and Disappearance: Selected Exporters	42
Corn Supply and Disappearance: Selected Exporters	44
Barley Supply and Disappearance: Selected Exporters.....	46
Sorghum Supply and Disappearance: Selected Exporters.....	47
U.S. Grains: Supply and Distribution	48
Total Wheat and Coarse Grains: Supply and Demand.....	49
World Wheat and Coarse Grains: Supply and Demand	50
World Corn and Barley: Supply and Demand	51
World Rice: Supply and Demand.....	52

European Union: Grain Supply and Demand

Wheat and Coarse Grains Millions of Metric Tons/Hectares

	Area Harvested	Yield	Production	Imports	Exports	Feed Dom. Consumpti	Domestic Consumpti	Ending Stocks
Wheat								
2000/01	26.5	5.0	131.7	3.5	15.7	56.3	118.4	17.5
2001/02	25.9	4.8	123.4	8.7	12.8	56.5	118.5	18.3
2002/03	26.4	5.0	132.6	10.7	18.1	60.0	125.0	18.5
2003/04	24.3	4.5	110.6	7.4	9.8	52.4	115.1	11.5
2004/05	26.0	5.7	146.9	7.1	14.7	59.2	123.2	27.5
2005/06	25.8	5.1	132.4	6.8	15.7	63.0	127.5	23.4
2006/07	24.5	5.1	124.9	5.2	13.8	60.2	125.5	14.2
2007/08	24.7	4.9	120.1	6.9	12.3	52.4	116.5	12.4
2008/09	26.7	5.7	151.1	7.7	25.4	60.5	127.0	18.9
2009/10	25.8	5.4	138.8	5.5	22.1	57.5	125.0	16.2
2010/11	26.1	5.2	135.7	4.7	22.9	52.5	122.0	11.7
2011/12	25.8	5.3	137.5	7.5	17.0	55.5	125.5	14.2
Coarse Grains								
2000/01	33.2	4.2	140.3	4.1	9.3	105.5	139.7	18.4
2001/02	33.7	4.5	150.5	3.9	6.7	108.1	143.8	22.4
2002/03	32.8	4.5	148.4	4.4	7.6	109.5	145.0	22.6
2003/04	32.7	4.0	131.8	8.2	4.2	109.7	145.3	13.1
2004/05	33.4	5.0	166.7	3.0	4.9	116.6	152.6	25.3
2005/06	32.7	4.5	146.8	2.8	4.4	110.0	148.1	22.4
2006/07	32.0	4.3	137.9	8.1	4.7	110.9	148.4	15.3
2007/08	32.2	4.2	136.6	20.3	4.6	119.6	154.9	12.7
2008/09	33.6	4.8	162.1	3.4	5.6	114.0	151.9	20.8
2009/10	32.5	4.8	155.0	3.0	3.0	112.6	150.1	25.9
2010/11	30.2	4.6	139.5	8.5	6.2	114.0	151.9	15.7
2011/12	30.2	4.9	147.2	5.1	5.6	110.8	149.1	13.4
Wheat and Coarse Grains								
2000/01	59.7	4.6	272.0	7.6	24.9	161.8	258.0	35.9
2001/02	59.6	4.6	273.9	12.7	19.4	164.6	262.3	40.7
2002/03	59.2	4.7	281.0	15.0	25.7	169.5	270.0	41.1
2003/04	57.0	4.2	242.4	15.6	14.0	162.1	260.4	24.7
2004/05	59.4	5.3	313.6	10.1	19.6	175.8	275.9	52.8
2005/06	58.5	4.8	279.1	9.6	20.1	173.0	275.6	45.8
2006/07	56.4	4.7	262.8	13.3	18.5	171.1	273.9	29.5
2007/08	56.9	4.5	256.7	27.2	16.9	172.0	271.4	25.2
2008/09	60.2	5.2	313.2	11.2	30.9	174.5	278.9	39.8
2009/10	58.3	5.0	293.9	8.6	25.1	170.1	275.1	42.0
2010/11	56.3	4.9	275.1	13.2	29.0	166.5	273.9	27.4
2011/12	56.0	5.1	284.7	12.6	22.6	166.3	274.6	27.5

China: Grain Supply and Demand

Wheat and Coarse Grains Millions of Metric Tons/Hectares

	Area Harvested	Yield	Production	Imports	Exports	Feed Dom. Consumpti	Domestic Consumpti	Ending Stocks
Wheat								
2000/01	26.7	3.7	99.6	0.2	0.6	10.0	110.3	91.9
2001/02	24.6	3.8	93.9	1.1	1.5	9.0	108.7	76.6
2002/03	23.9	3.8	90.3	0.4	1.7	6.5	105.2	60.4
2003/04	22.0	3.9	86.5	3.7	2.8	6.0	104.5	43.3
2004/05	21.6	4.3	92.0	6.7	1.2	4.0	102.0	38.8
2005/06	22.8	4.3	97.4	1.1	1.4	3.5	101.5	34.5
2006/07	23.6	4.6	108.5	0.4	2.8	4.0	102.0	38.6
2007/08	23.7	4.6	109.3	0.0	2.8	8.0	106.0	39.1
2008/09	23.6	4.8	112.5	0.5	0.7	8.0	105.5	45.8
2009/10	24.3	4.7	115.1	1.4	0.9	10.0	107.0	54.4
2010/11	24.3	4.7	115.2	0.9	0.9	13.0	110.5	59.1
2011/12	24.2	4.9	117.9	1.5	1.0	17.5	116.0	61.5
Coarse Grains								
2000/01	26.5	4.3	114.0	2.4	7.3	94.4	130.4	102.8
2001/02	27.3	4.5	122.4	2.0	8.6	96.3	133.0	85.6
2002/03	27.8	4.7	130.6	1.8	15.3	98.4	136.3	66.5
2003/04	26.8	4.6	124.0	1.5	7.7	99.1	138.3	45.9
2004/05	28.0	4.9	138.3	2.1	7.6	100.3	141.1	37.6
2005/06	28.8	5.1	147.8	2.3	3.8	103.4	147.2	36.7
2006/07	30.9	5.1	159.1	1.2	5.5	104.6	153.5	38.0
2007/08	31.8	5.0	158.9	1.2	0.9	106.3	157.8	39.4
2008/09	32.2	5.4	172.4	1.7	0.2	108.3	161.1	52.2
2009/10	33.4	5.1	169.6	3.8	0.2	118.4	173.0	52.4
2010/11	34.7	5.3	182.9	2.7	0.2	124.3	183.8	53.9
2011/12	35.7	5.5	198.0	6.1	0.3	134.4	199.1	58.6
Wheat and Coarse Grains								
2000/01	53.1	4.0	213.6	2.6	7.9	104.4	240.7	194.7
2001/02	52.0	4.2	216.3	3.1	10.1	105.3	241.7	162.2
2002/03	51.7	4.3	220.9	2.2	17.1	104.9	241.5	126.8
2003/04	48.8	4.3	210.5	5.3	10.5	105.1	242.8	89.2
2004/05	49.6	4.6	230.2	8.8	8.8	104.3	243.1	76.4
2005/06	51.6	4.7	245.2	3.4	5.2	106.9	248.7	71.2
2006/07	54.5	4.9	267.6	1.5	8.2	108.6	255.5	76.6
2007/08	55.5	4.8	268.2	1.2	3.7	114.3	263.8	78.5
2008/09	55.8	5.1	284.9	2.1	0.9	116.3	266.6	98.0
2009/10	57.7	4.9	284.7	5.2	1.1	128.4	280.0	106.8
2010/11	59.0	5.1	298.1	3.6	1.1	137.3	294.3	113.0
2011/12	59.9	5.3	315.9	7.6	1.3	151.9	315.1	120.1

Other Europe: Grain Supply and Demand

Wheat and Coarse Grains Millions of Metric Tons/Hectares

	Area Harvested	Yield	Production	Imports	Exports	Feed Dom. Consumpti	Domestic Consumpti	Ending Stocks
Wheat								
2000/01	1.4	3.3	4.6	1.2	0.3	0.7	5.5	1.4
2001/02	1.4	3.4	4.9	1.8	0.6	0.9	5.9	1.5
2002/03	1.4	3.5	4.9	1.4	0.6	0.9	5.6	1.5
2003/04	1.2	3.1	3.9	1.5	0.1	0.7	5.4	1.3
2004/05	1.4	4.0	5.4	1.5	0.3	1.0	5.9	2.0
2005/06	1.1	3.7	4.2	1.5	0.2	0.9	5.8	1.8
2006/07	1.2	3.6	4.3	1.5	0.6	0.7	5.3	1.7
2007/08	1.2	3.7	4.4	1.9	0.8	0.8	5.5	1.8
2008/09	1.1	4.2	4.7	1.7	0.5	1.0	5.6	2.2
2009/10	1.2	3.8	4.6	1.7	0.8	0.8	5.5	2.2
2010/11	1.1	3.6	3.8	1.6	0.8	0.7	5.3	1.5
2011/12	1.1	4.0	4.4	1.7	0.8	0.8	5.5	1.4
Coarse Grains								
2000/01	2.6	3.1	8.1	1.0	0.0	7.7	9.0	1.0
2001/02	2.7	4.1	10.9	0.8	0.2	9.8	11.1	1.4
2002/03	2.7	4.4	11.7	0.6	0.6	9.9	11.4	1.8
2003/04	2.7	3.5	9.2	0.8	0.1	9.5	10.8	1.1
2004/05	2.7	4.8	12.8	0.6	0.6	10.8	12.2	1.6
2005/06	2.7	4.8	12.7	0.7	1.4	10.7	12.0	1.5
2006/07	2.5	4.6	11.6	0.9	0.9	10.2	11.5	1.5
2007/08	2.6	3.6	9.4	1.0	0.1	9.1	10.4	1.3
2008/09	2.7	4.6	12.4	0.6	1.9	9.6	10.9	1.5
2009/10	2.4	4.8	11.8	0.7	1.7	9.3	10.8	1.7
2010/11	2.5	4.9	12.2	0.9	2.2	9.3	10.9	1.7
2011/12	2.5	4.6	11.6	0.7	1.7	9.3	10.8	1.5
Wheat and Coarse Grains								
2000/01	4.0	3.2	12.7	2.2	0.3	8.4	14.5	2.3
2001/02	4.1	3.9	15.8	2.6	0.8	10.7	17.0	2.9
2002/03	4.1	4.1	16.6	2.0	1.2	10.7	17.0	3.3
2003/04	3.9	3.4	13.1	2.3	0.2	10.2	16.2	2.4
2004/05	4.0	4.5	18.2	2.1	0.9	11.8	18.1	3.7
2005/06	3.8	4.4	16.9	2.1	1.6	11.5	17.8	3.3
2006/07	3.7	4.3	15.9	2.4	1.5	10.9	16.8	3.3
2007/08	3.8	3.6	13.8	2.9	0.9	10.0	15.9	3.2
2008/09	3.8	4.5	17.1	2.3	2.4	10.5	16.5	3.7
2009/10	3.7	4.5	16.4	2.4	2.5	10.1	16.2	3.8
2010/11	3.6	4.5	16.0	2.5	3.0	10.0	16.2	3.2
2011/12	3.6	4.4	16.0	2.5	2.5	10.1	16.3	2.8

Former Soviet Union: Grain Supply and Demand

Wheat and Coarse Grains Millions of Metric Tons/Hectares

	Area Harvested	Yield	Production	Imports	Exports	Feed Dom. Consumpti	Domestic Consumpti	Ending Stocks
Wheat								
2005/06	49.2	1.8	90.7	5.6	21.1	23.5	75.0	17.0
2006/07	45.8	1.8	84.7	6.0	22.6	21.6	72.5	12.6
2007/08	47.4	1.9	92.4	6.0	21.9	23.9	75.4	13.8
2008/09	51.7	2.2	115.5	6.6	37.8	24.4	76.0	22.1
2009/10	55.0	2.1	114.0	5.4	36.7	25.7	77.8	27.1
2010/11	51.8	1.6	81.1	5.5	14.1	23.8	75.2	24.2
2011/12	50.7	2.3	114.3	6.8	35.7	27.8	80.4	29.2
Coarse Grains								
2005/06	28.3	2.0	55.7	1.1	8.6	34.5	50.5	5.2
2006/07	30.0	2.0	59.1	1.0	8.5	35.8	51.4	5.4
2007/08	29.6	1.8	54.2	1.0	5.3	35.0	50.6	4.8
2008/09	30.9	2.6	79.0	0.7	17.1	41.5	58.1	9.3
2009/10	29.6	2.3	67.6	0.4	15.0	39.1	55.0	7.3
2010/11	26.2	1.8	47.6	1.2	8.7	28.7	41.7	5.6
2011/12	28.3	2.8	78.5	0.6	22.3	39.2	54.7	7.8

Former Soviet Union: Grain Supply and Demand (Wheat)

Millions of Tons/Hectares

Country Mktg Year	Area Harvested	Yield	Production	MY Imports	MY Exports	Feed and Residual	Total Consumpti	Ending Stocks
Former Soviet Union - 12								
Kazakhstan								
2008/09	13.5	0.9	12.5	0.1	5.7	2.6	7.5	3.4
2009/10	14.8	1.2	17.1	0.1	7.9	2.7	7.6	5.0
2010/11	14.3	0.7	9.6	0.0	5.5	1.9	6.2	2.9
2011/12	13.8	1.6	22.7	0.0	9.0	4.0	9.0	7.7
Russia								
2008/09	26.6	2.4	63.8	0.2	18.4	16.2	38.9	10.7
2009/10	28.7	2.2	61.8	0.2	18.6	16.8	39.6	14.5
2010/11	26.6	1.6	41.5	0.1	4.0	16.0	38.6	13.5
2011/12	25.7	2.2	56.2	0.2	20.5	16.0	38.6	10.9
Ukraine								
2008/09	7.1	3.7	25.9	0.1	13.0	2.9	11.9	3.1
2009/10	6.8	3.1	20.9	0.0	9.3	3.3	12.3	2.4
2010/11	6.3	2.7	16.8	0.0	4.3	2.8	11.6	3.3
2011/12	6.7	3.3	22.0	0.1	6.0	4.6	13.4	6.0
Uzbekistan								
2008/09	1.4	4.4	6.0	1.4	0.2	1.3	7.1	0.9
2009/10	1.4	4.4	6.2	1.7	0.4	1.4	7.5	0.9
2010/11	1.4	4.6	6.5	1.6	0.1	1.5	7.9	1.0
2011/12	1.4	4.5	6.3	2.0	0.1	1.5	8.0	1.2
Other Former Soviet Union - 12								
2008/09	3.1	2.3	7.3	4.7	0.4	1.4	10.6	4.0
2009/10	3.4	2.4	8.2	3.5	0.5	1.5	10.8	4.3
2010/11	3.2	2.1	6.6	3.7	0.2	1.6	10.9	3.4
2011/12	3.1	2.3	7.0	4.5	0.1	1.7	11.4	3.5
Total Former Soviet Union - 12								
2008/09	51.7	2.2	115.5	6.6	37.8	24.4	76.0	22.1
2009/10	55.0	2.1	114.0	5.4	36.7	25.7	77.8	27.1
2010/11	51.8	1.6	81.1	5.5	14.1	23.8	75.2	24.2
2011/12	50.7	2.3	114.3	6.8	35.7	27.8	80.4	29.2

Former Soviet Union: Grain Supply and Demand (Barley)

Millions of Tons/Hectares

Country Mktg Year	Area Harvested	Yield	Production	MY Imports	MY Exports	Feed and Residual	Total Consumpti	Ending Stocks
Former Soviet Union - 12								
Kazakhstan								
2008/09	2.1	1.0	2.1	0.1	0.3	1.6	1.9	0.3
2009/10	1.8	1.4	2.5	0.0	0.4	1.7	2.0	0.5
2010/11	1.6	0.8	1.3	0.1	0.2	1.0	1.3	0.3
2011/12	1.6	1.7	2.6	0.0	0.6	1.5	1.8	0.5
Russia								
2008/09	9.7	2.4	23.1	0.1	3.4	12.3	17.1	3.8
2009/10	9.1	2.0	17.9	0.0	2.7	12.2	16.7	2.4
2010/11	7.2	1.2	8.4	0.4	0.3	5.5	9.5	1.4
2011/12	8.0	2.1	16.9	0.2	2.9	9.8	14.3	1.3
Ukraine								
2008/09	4.2	3.0	12.6	0.0	6.4	4.3	5.9	1.1
2009/10	5.0	2.4	11.8	0.0	6.2	3.9	5.6	1.1
2010/11	4.3	2.0	8.5	0.0	2.8	4.4	6.0	0.8
2011/12	3.7	2.4	9.0	0.0	3.1	3.4	5.0	1.7
Uzbekistan								
2008/09	0.1	3.2	0.2	0.0	0.0	0.2	0.3	0.0
2009/10	0.1	3.2	0.2	0.0	0.0	0.2	0.3	0.0
2010/11	0.1	3.2	0.2	0.0	0.0	0.2	0.3	0.0
2011/12	0.1	3.2	0.2	0.0	0.0	0.2	0.3	0.0
Other Former Soviet Union - 12								
2008/09	1.3	2.8	3.6	0.1	0.0	2.8	3.6	0.5
2009/10	1.3	2.7	3.5	0.1	0.0	2.8	3.6	0.5
2010/11	1.4	2.4	3.3	0.2	0.0	2.6	3.4	0.6
2011/12	1.3	2.5	3.2	0.1	0.0	2.6	3.4	0.5
Total Former Soviet Union - 12								
2008/09	17.3	2.4	41.7	0.3	10.1	21.2	28.7	5.7
2009/10	17.3	2.1	36.0	0.2	9.3	20.7	28.1	4.4
2010/11	14.6	1.5	21.7	0.7	3.3	13.7	20.5	3.1
2011/12	14.6	2.2	32.0	0.4	6.6	17.5	24.8	4.0

Former Soviet Union: Grain Supply and Demand (Corn)

Millions of Tons/Hectares

Country Mktg Year	Area Harvested	Yield	Production	MY Imports	MY Exports	Feed and Residual	Total Consumpti	Ending Stocks
Former Soviet Union - 12								
Kazakhstan								
2008/09	0.1	4.3	0.4	0.0	0.0	0.3	0.4	0.0
2009/10	0.1	4.7	0.5	0.0	0.0	0.3	0.4	0.0
2010/11	0.1	5.1	0.5	0.0	0.0	0.4	0.5	0.1
2011/12	0.1	4.9	0.5	0.0	0.0	0.4	0.5	0.1
Russia								
2008/09	1.8	3.7	6.7	0.1	1.3	4.5	5.2	0.3
2009/10	1.4	2.9	4.0	0.0	0.4	3.2	3.7	0.1
2010/11	1.4	2.2	3.1	0.1	0.0	2.8	3.2	0.1
2011/12	1.7	3.8	6.7	0.1	1.2	4.4	5.1	0.5
Ukraine								
2008/09	2.4	4.7	11.4	0.0	5.5	5.1	5.9	0.9
2009/10	2.1	5.0	10.5	0.0	5.1	5.0	5.7	0.7
2010/11	2.6	4.5	11.9	0.0	5.0	5.8	6.6	1.1
2011/12	3.5	6.4	22.5	0.0	14.0	7.5	8.3	1.3
Uzbekistan								
2008/09	0.0	4.6	0.2	0.0	0.0	0.2	0.2	0.0
2009/10	0.0	4.6	0.2	0.0	0.0	0.2	0.2	0.0
2010/11	0.0	4.6	0.2	0.0	0.0	0.2	0.2	0.0
2011/12	0.0	4.6	0.2	0.0	0.0	0.2	0.2	0.0
Other Former Soviet Union - 12								
2008/09	0.8	3.6	3.0	0.3	0.1	2.5	2.8	0.9
2009/10	0.8	3.3	2.6	0.2	0.1	2.7	3.0	0.6
2010/11	0.8	3.7	2.9	0.2	0.2	2.6	2.9	0.6
2011/12	0.8	4.2	3.5	0.1	0.3	3.0	3.4	0.6
Total Former Soviet Union - 12								
2008/09	5.2	4.2	21.7	0.4	6.9	12.6	14.5	2.1
2009/10	4.4	4.0	17.7	0.3	5.6	11.3	13.0	1.5
2010/11	5.0	3.7	18.5	0.3	5.2	11.7	13.3	1.8
2011/12	6.2	5.4	33.4	0.2	15.5	15.4	17.4	2.5

Wheat Supply and Disappearance: Selected Exporters
Million Metric Tons/Hectares

Country Mktg Year	Area Harvested	Yield	Production	MY Imports	MY Exports	Feed and Residual	Total Consumpti	Ending Stocks
Wheat Competitors								
Argentina								
2003/04	6.0	2.5	15.1	0.0	9.5	0.1	5.4	1.6
2004/05	6.4	2.6	16.9	0.0	11.9	0.1	5.4	1.3
2005/06	5.5	2.5	13.8	0.0	9.6	0.0	5.1	0.4
2006/07	6.2	2.6	16.3	0.0	10.7	0.1	5.4	0.6
2007/08	6.6	2.8	18.6	0.0	11.2	0.1	5.7	2.4
2008/09	5.3	2.1	11.0	0.0	6.8	0.0	5.3	1.3
2009/10	4.0	3.0	12.0	0.0	5.1	0.0	5.8	2.4
2010/11	4.6	3.5	16.1	0.0	9.5	0.0	5.9	3.1
2011/12	5.0	2.9	14.5	0.0	9.0	0.0	5.9	2.7
Australia								
2003/04	13.1	2.0	26.1	0.1	18.0	3.2	6.0	5.4
2004/05	13.4	1.6	21.9	0.1	14.7	3.2	6.0	6.7
2005/06	12.5	2.0	25.2	0.1	16.0	3.7	6.6	9.4
2006/07	11.8	0.9	10.8	0.1	8.7	4.5	7.4	4.2
2007/08	12.6	1.1	13.6	0.1	7.5	3.5	6.5	3.9
2008/09	13.5	1.6	21.4	0.1	14.7	4.2	7.3	3.4
2009/10	13.9	1.6	21.8	0.1	14.8	1.9	4.9	5.6
2010/11	13.6	2.0	27.9	0.1	18.7	3.0	6.1	8.8
2011/12	14.1	2.1	29.5	0.1	21.5	4.5	7.7	9.2
Canada								
2003/04	10.2	2.3	23.0	0.2	15.8	3.1	7.2	6.0
2004/05	9.4	2.6	24.8	0.3	14.9	3.8	8.2	7.9
2005/06	9.4	2.7	25.7	0.3	16.0	3.8	8.2	9.7
2006/07	9.7	2.6	25.3	0.3	19.4	4.5	9.0	6.9
2007/08	8.6	2.3	20.1	0.4	16.1	2.2	6.8	4.4
2008/09	10.0	2.9	28.6	0.4	18.9	3.2	8.0	6.5
2009/10	9.6	2.8	26.8	0.4	19.0	2.2	6.9	7.8
2010/11	8.3	2.8	23.2	0.4	16.6	2.8	7.7	7.2
2011/12	8.5	3.0	25.3	0.4	17.5	3.9	9.0	6.3
Total Wheat Competitors								
2003/04	29.2	2.2	64.3	0.3	43.3	6.4	18.5	13.0
2004/05	29.2	2.2	63.6	0.3	41.5	7.1	19.6	15.9
2005/06	27.3	2.4	64.7	0.4	41.7	7.5	19.9	19.4
2006/07	27.7	1.9	52.4	0.4	38.9	9.1	21.7	11.6

Wheat Supply and Disappearance: Selected Exporters (Continued)

Million Metric Tons/Hectares

Country Mktg Year	Area Harvested	Yield	Production	MY Imports	MY Exports	Feed and Residual	Total Consumpti	Ending Stocks
2007/08	27.8	1.9	52.2	0.5	34.8	5.8	18.9	10.6
2008/09	28.8	2.1	61.0	0.5	40.4	7.4	20.6	11.2
2009/10	27.5	2.2	60.7	0.5	39.0	4.1	17.7	15.8
2010/11	26.5	2.5	67.2	0.6	44.7	5.8	19.7	19.1
2011/12	27.6	2.5	69.3	0.5	48.0	8.4	22.7	18.2
India								
2003/04	24.9	2.6	65.8	0.0	5.7	0.6	68.9	6.9
2004/05	26.6	2.7	72.2	0.0	2.1	0.5	72.8	4.1
2005/06	26.5	2.6	68.6	0.0	0.8	0.3	70.0	2.0
2006/07	26.4	2.6	69.4	6.7	0.1	0.3	73.5	4.5
2007/08	28.0	2.7	75.8	2.0	0.0	0.2	76.4	5.8
2008/09	28.2	2.8	78.6	0.0	0.0	0.1	70.9	13.4
2009/10	27.8	2.9	80.7	0.2	0.1	0.1	78.2	16.1
2010/11	28.5	2.8	80.8	0.3	0.1	0.2	81.8	15.4
2011/12	29.4	3.0	86.9	0.0	0.7	0.2	83.1	18.5
Turkey								
2003/04	8.6	2.0	16.8	1.1	0.8	1.0	16.8	1.7
2004/05	8.6	2.2	18.5	0.4	2.0	1.0	16.8	1.8
2005/06	8.6	2.2	18.5	0.1	3.2	0.4	16.1	1.1
2006/07	8.6	2.0	17.5	1.7	2.4	0.8	16.7	1.3
2007/08	7.7	2.0	15.5	2.2	1.7	0.8	16.8	0.4
2008/09	7.7	2.2	16.8	3.5	2.2	0.7	16.9	1.5
2009/10	7.8	2.4	18.5	3.2	4.3	0.8	17.1	1.8
2010/11	8.0	2.1	17.0	3.7	3.0	0.7	17.2	2.3
2011/12	7.7	2.4	18.8	3.5	4.0	1.4	18.1	2.5

Corn Supply and Disappearance: Selected Exporters
Million Metric Tons/Hectares

Country Mktg Year	Area Harvested	Yield	Production	MY Imports	MY Exports	Feed and Residual	Total Consumpti	Ending Stocks
Argentina								
2003/04	2.3	6.4	15.0	0.0	10.9	2.8	4.4	0.4
2004/05	2.8	7.4	20.5	0.0	14.6	3.5	5.2	1.1
2005/06	2.4	6.5	15.8	0.0	9.5	4.4	6.2	1.3
2006/07	2.8	8.0	22.5	0.0	15.3	4.8	6.7	1.8
2007/08	3.4	6.5	22.0	0.0	14.8	4.9	6.8	2.2
2008/09	2.5	6.2	15.5	0.0	10.3	4.5	6.4	1.0
2009/10	2.8	8.5	23.3	0.0	16.5	5.0	6.9	0.9
2010/11	3.8	6.3	23.8	0.0	16.0	5.3	7.3	1.3
2011/12	3.6	6.1	22.0	0.0	14.0	5.6	7.7	1.6
Brazil								
2003/04	12.4	3.4	42.0	0.4	4.4	30.5	36.3	7.9
2004/05	11.6	3.0	35.0	0.5	0.7	32.1	38.5	4.2
2005/06	12.9	3.2	41.7	1.1	4.5	33.0	39.5	3.0
2006/07	14.0	3.6	51.0	1.4	10.8	34.5	41.0	3.6
2007/08	14.7	4.0	58.6	0.7	7.8	36.0	42.5	12.6
2008/09	14.1	3.6	51.0	1.1	7.1	38.5	45.5	12.1
2009/10	12.9	4.3	56.1	0.4	11.6	40.0	47.0	10.0
2010/11	13.8	4.2	57.5	0.8	9.0	42.5	49.5	9.8
2011/12	15.3	4.1	62.0	0.5	10.0	45.0	52.0	10.3
China								
2003/04	24.1	4.8	115.8	0.0	7.6	97.0	128.4	44.9
2004/05	25.4	5.1	130.3	0.0	7.6	98.0	131.0	36.6
2005/06	26.4	5.3	139.4	0.1	3.7	101.0	137.0	35.3
2006/07	28.5	5.3	151.6	0.0	5.3	104.0	145.0	36.6
2007/08	29.5	5.2	152.3	0.0	0.5	106.0	150.0	38.4
2008/09	29.9	5.6	165.9	0.0	0.2	108.0	153.0	51.2
2009/10	31.2	5.3	164.0	1.3	0.2	118.0	165.0	51.3
2010/11	32.5	5.5	177.2	1.0	0.1	124.0	176.0	53.4
2011/12	33.4	5.7	191.8	4.0	0.2	134.0	191.0	58.0
South Africa								
2003/04	3.3	2.9	9.7	0.2	0.7	4.1	8.7	3.0
2004/05	3.2	3.6	11.7	0.4	2.1	5.0	9.7	3.2
2005/06	2.0	3.4	6.9	0.9	0.5	4.0	8.2	2.3
2006/07	2.9	2.5	7.3	1.1	0.5	4.4	8.6	1.7
2007/08	3.3	4.0	13.2	0.0	2.2	4.3	9.6	3.1
2008/09	2.9	4.3	12.6	0.0	1.7	4.3	9.9	4.1

Corn Supply and Disappearance: Selected Exporters (Continued)

Million Metric Tons/Hectares

Country Mktg Year	Area Harvested	Yield	Production	MY Imports	MY Exports	Feed and Residual	Total Consumpti	Ending Stocks
2009/10	3.3	4.1	13.4	0.0	2.1	4.6	10.3	5.2
2010/11	2.9	3.8	10.9	0.3	2.4	4.8	10.5	3.5
2011/12	3.2	3.8	12.0	0.0	2.0	4.9	10.6	2.9
Total Corn Competitors								
2003/04	42.1	4.3	182.5	0.6	23.7	134.4	177.8	56.1
2004/05	43.0	4.6	197.5	0.9	25.0	138.6	184.4	45.1
2005/06	43.7	4.7	203.8	2.1	18.3	142.4	190.9	41.8
2006/07	48.2	4.8	232.4	2.6	31.9	147.7	201.3	43.6
2007/08	50.9	4.8	246.1	0.8	25.3	151.2	208.9	56.3
2008/09	49.4	5.0	245.0	1.2	19.3	155.3	214.8	68.4
2009/10	50.1	5.1	256.8	1.7	30.3	167.6	229.2	67.3
2010/11	53.0	5.1	269.4	2.1	27.5	176.6	243.3	68.0
2011/12	55.5	5.2	287.8	4.5	26.2	189.5	261.3	72.8

Barley Supply and Disappearance: Selected Exporters
Million Metric Tons/Hectares

Country Mktg Year	Area Harvested	Yield	Production	MY Imports	MY Exports	Feed and Residual	Total Consumpti	Ending Stocks
Australia								
2003/04	4.5	2.3	10.4	0.0	6.4	2.2	3.1	1.9
2004/05	4.6	1.7	7.7	0.0	4.3	2.5	3.5	1.9
2005/06	4.4	2.2	9.5	0.0	5.3	2.5	3.5	2.6
2006/07	4.2	1.0	4.3	0.0	1.9	2.9	4.0	1.0
2007/08	4.9	1.5	7.2	0.0	3.4	2.1	3.1	1.7
2008/09	5.0	1.6	8.0	0.0	3.2	2.9	4.0	2.4
2009/10	4.4	1.8	7.9	0.0	3.9	3.3	4.5	1.9
2010/11	3.7	2.2	8.1	0.0	4.7	3.0	4.3	1.1
2011/12	4.0	2.1	8.5	0.0	4.0	3.0	4.3	1.3
Canada								
2003/04	4.4	2.8	12.2	0.0	1.8	8.4	9.7	2.1
2004/05	3.8	3.3	12.6	0.1	1.2	8.8	10.1	3.4
2005/06	3.6	3.2	11.7	0.0	2.3	8.4	9.6	3.3
2006/07	3.2	3.0	9.6	0.0	1.2	8.8	10.2	1.5
2007/08	4.0	2.7	11.0	0.1	3.0	6.6	7.9	1.6
2008/09	3.5	3.4	11.8	0.0	1.5	7.7	9.1	2.8
2009/10	2.9	3.3	9.5	0.0	1.3	7.3	8.5	2.6
2010/11	2.4	3.2	7.6	0.0	1.2	6.4	7.6	1.4
2011/12	2.4	3.3	7.8	0.1	1.0	6.2	7.3	1.0
EU-27								
2003/04	14.1	4.0	55.8	0.7	2.6	41.8	58.0	4.5
2004/05	13.7	4.7	64.1	0.3	3.3	38.6	54.6	11.1
2005/06	13.8	4.0	54.8	0.1	3.3	38.2	54.1	8.5
2006/07	13.8	4.1	56.2	0.2	3.5	38.7	55.7	5.8
2007/08	13.8	4.2	57.5	0.3	3.8	38.7	54.2	5.7
2008/09	14.5	4.5	65.5	0.3	3.6	41.5	57.0	10.9
2009/10	13.9	4.5	62.1	0.1	1.1	41.5	56.5	15.5
2010/11	12.5	4.2	53.0	0.2	4.9	41.2	56.4	7.5
2011/12	12.1	4.3	52.3	0.4	2.8	37.0	52.0	5.3

Sorghum Supply and Disappearance: Selected Exporters
Million Metric Tons/Hectares

Country Mktg Year	Area Harvested	Yield	Production	MY Imports	MY Exports	Feed and Residual	Total Consumpti	Ending Stocks
Argentina								
2003/04	0.5	4.6	2.2	0.0	0.2	1.9	2.0	0.4
2004/05	0.6	5.2	2.9	0.0	0.4	2.4	2.6	0.4
2005/06	0.5	4.7	2.3	0.0	0.2	2.1	2.3	0.2
2006/07	0.6	4.7	2.8	0.0	1.1	1.5	1.7	0.2
2007/08	0.6	4.7	2.9	0.0	1.2	1.0	1.2	0.7
2008/09	0.5	3.7	1.7	0.0	1.1	1.0	1.1	0.2
2009/10	0.8	4.8	3.6	0.0	1.8	1.7	1.9	0.2
2010/11	1.0	4.4	4.4	0.0	1.8	2.0	2.2	0.6
2011/12	1.0	4.1	4.2	0.0	2.0	2.1	2.3	0.5
Australia								
2003/04	0.7	2.7	2.0	0.0	0.6	1.4	1.4	0.1
2004/05	0.8	2.7	2.0	0.0	0.2	1.8	1.8	0.1
2005/06	0.8	2.5	1.9	0.0	0.1	1.9	1.9	0.0
2006/07	0.6	2.1	1.3	0.0	0.1	1.2	1.2	0.0
2007/08	0.9	4.0	3.8	0.0	0.8	2.2	2.2	0.8
2008/09	0.8	3.5	2.7	0.0	1.0	1.8	1.8	0.7
2009/10	0.5	3.0	1.5	0.0	0.3	1.2	1.2	0.7
2010/11	0.7	3.1	2.1	0.0	0.8	1.4	1.4	0.5
2011/12	0.6	4.1	2.7	0.0	1.2	1.4	1.4	0.6

U.S. Grains Supply and Distribution: Wheat, Corn, Sorghum, Barley, Oats, Rye, and Rice

Thousand Metric Tons/Hectares

	Area Harvested	Yield	Rough Production	Production	Imports	TY Imports	Exports	TY Exports	Feed Dom. Consumption	Domestic Consumption	Ending Stocks
Wheat											
2009/10	20,191	3	nr	60,366	3,227	3,235	23,930	24,172	4,078	30,978	26,552
2010/11	19,271	3	nr	60,062	2,638	2,571	35,076	35,977	3,589	30,710	23,466
2011/12	18,496	3	nr	54,413	3,267	3,200	27,216	26,500	3,947	31,477	22,453
Corn											
2009/10	32,169	10	nr	332,549	212	237	50,295	49,721	130,173	281,590	43,380
2010/11	32,960	10	nr	316,165	703	684	46,599	45,254	121,737	285,005	28,644
2011/12	33,986	9	nr	313,918	508	500	43,182	43,500	116,845	279,540	20,348
Sorghum											
2009/10	2,234	4	nr	9,728	0	0	4,211	4,074	3,573	5,859	1,048
2010/11	1,948	5	nr	8,779	1	1	3,819	3,794	3,152	5,312	697
2011/12	1,590	3	nr	5,447	0	0	1,524	1,650	1,651	3,937	683
Barley											
2009/10	1,260	4	nr	4,949	361	302	123	152	1,040	4,604	2,515
2010/11	998	4	nr	3,925	207	148	165	181	1,084	4,537	1,945
2011/12	906	4	nr	3,392	218	200	218	200	871	4,354	983
Oats											
2009/10	558	2	nr	1,351	1,636	1,607	31	38	1,930	3,011	1,166
2010/11	511	2	nr	1,178	1,468	1,468	41	37	1,715	2,789	982
2011/12	380	2	nr	779	1,895	1,700	44	45	1,605	2,708	904
Rye											
2009/10	102	2	nr	178	108	129	2	4	37	273	24
2010/11	107	2	nr	189	141	148	4	3	93	330	20
2011/12	98	2	nr	161	152	150	5	5	69	305	23
Rice, Milled											
2009/10	1,256	8	9,972	7,133	604	562	3,514	3,868	nr	4,016	1,184
2010/11	1,463	8	11,027	7,593	582	620	3,487	3,213	nr	4,358	1,514
2011/12	1,059	8	8,391	5,874	635	675	2,826	3,000	nr	3,912	1,285

Notes: Wheat Trade Year (TY) statistics are on July/June years. Barley, corn, sorghum, rye and oats Trade Year (TY) statistics are on Oct/Sept years. Rice Trade Year (TY) statistics are for the subsequent calendar year; 'Imports' and 'Exports' columns contain data on the local marketing year: wheat, barley, oats and rye are June/May; corn and sorghum are Sept/Aug; rice is Aug/July.

Total Wheat and Coarse Grains: Supply and Demand

Millions of Metric Tons/Hectares

	Area Harvested	Yield	Production	TY Exports	Feed Dom. Consumpti	Domestic Consumpti	Ending Stocks
Wheat and Coarse Grains							
1982/83	576.9	2.2	1,248.0	189.6	593.4	1,197.1	332.1
1983/84	563.8	2.1	1,162.5	193.2	588.4	1,216.1	278.5
1984/85	567.0	2.3	1,315.0	203.6	609.9	1,253.5	340.0
1985/86	570.9	2.3	1,328.5	165.2	613.1	1,247.9	420.6
1986/87	565.6	2.4	1,348.0	174.7	644.2	1,299.4	469.2
1987/88	544.8	2.4	1,285.9	202.2	655.1	1,329.8	423.1
1988/89	542.4	2.2	1,218.1	203.3	618.2	1,302.0	339.3
1989/90	548.9	2.4	1,327.4	208.9	642.9	1,346.2	320.5
1990/91	549.0	2.6	1,417.6	190.1	667.3	1,369.5	368.7
1991/92	546.3	2.5	1,355.7	207.5	650.1	1,364.9	359.5
1992/93	548.8	2.6	1,431.6	205.2	661.4	1,389.1	399.2
1993/94	539.2	2.5	1,356.1	188.2	654.0	1,389.2	366.1
1994/95	537.6	2.6	1,392.5	200.1	666.9	1,396.0	362.6
1995/96	533.4	2.5	1,338.5	187.5	638.0	1,381.9	319.1
1996/97	552.8	2.7	1,490.5	198.4	670.9	1,442.9	366.7
1997/98	539.5	2.8	1,491.6	190.3	681.2	1,444.7	413.6
1998/99	533.9	2.8	1,481.9	198.7	680.7	1,448.1	447.5
1999/00	515.0	2.8	1,464.9	214.3	685.8	1,468.0	443.8
2000/01	513.9	2.8	1,446.7	205.1	693.9	1,470.1	420.4
2001/02	516.3	2.9	1,480.2	208.5	708.1	1,495.6	404.9
2002/03	506.6	2.8	1,443.2	209.6	705.9	1,506.0	342.1
2003/04	516.0	2.9	1,471.6	206.2	712.3	1,534.4	279.2
2004/05	517.7	3.2	1,642.4	215.2	751.6	1,585.9	335.7
2005/06	520.6	3.1	1,599.2	222.8	751.6	1,616.3	318.7
2006/07	518.4	3.1	1,584.9	230.4	741.7	1,629.7	273.9
2007/08	536.8	3.2	1,692.7	245.3	754.9	1,675.5	291.1
2008/09	538.8	3.3	1,793.9	253.6	765.2	1,723.6	361.4
2009/10	538.2	3.3	1,801.0	253.4	769.9	1,764.7	397.8
2010/11	533.2	3.3	1,751.1	248.2	760.2	1,783.1	365.8
2011/12	537.7	3.4	1,837.7	263.1	795.7	1,836.0	367.5

Notes: Wheat and coarse grains trade data are on July/June years through 1975/76. From 1976/77 to the present, coarse grains data are on an Oct/Sept trade year.

World Wheat and Coarse Grains: Supply and Demand

Millions of Metric Tons/Hectares

	Area Harvested	Yield	Production	TY Exports	Feed Dom. Consumpti	Domestic Consumpti	Ending Stocks
Wheat							
1989/90	226.3	2.4	533.1	103.9	103.7	531.3	137.1
1990/91	231.7	2.5	588.8	101.3	130.1	554.3	171.6
1991/92	223.4	2.4	543.5	111.4	113.8	551.8	163.2
1992/93	222.8	2.5	562.6	113.2	110.1	547.7	177.9
1993/94	221.8	2.5	558.5	101.7	108.0	553.0	183.4
1994/95	214.5	2.4	523.0	101.5	99.6	542.1	164.2
1995/96	219.1	2.5	537.5	99.2	93.3	546.1	155.7
1996/97	230.3	2.5	581.5	104.0	97.9	573.4	163.8
1997/98	228.5	2.7	610.2	104.5	102.0	576.7	197.2
1998/99	225.4	2.6	590.4	102.0	105.0	578.3	209.4
1999/00	216.0	2.7	586.8	111.9	100.6	585.5	210.7
2000/01	217.6	2.7	583.1	102.4	105.2	585.4	208.4
2001/02	215.4	2.7	583.6	108.0	106.9	586.6	205.3
2002/03	215.0	2.6	569.6	106.8	111.1	604.9	170.1
2003/04	210.0	2.6	555.4	103.6	97.2	589.6	135.9
2004/05	217.2	2.9	626.7	113.9	106.6	607.1	155.5
2005/06	219.5	2.8	618.8	114.1	112.8	621.9	152.4
2006/07	212.9	2.8	596.1	115.6	107.9	615.9	132.6
2007/08	218.1	2.8	612.0	116.4	99.3	617.7	126.9
2008/09	225.3	3.0	682.8	143.0	118.1	642.7	167.1
2009/10	227.7	3.0	685.6	134.4	115.4	650.3	202.3
2010/11	223.2	2.9	651.5	132.3	112.4	654.4	199.5
2011/12	222.8	3.1	694.0	141.8	131.1	683.9	209.6
Coarse Grains							
1989/90	322.5	2.5	794.3	105.0	539.2	814.9	183.4
1990/91	317.2	2.6	828.8	88.9	537.3	815.2	197.1
1991/92	322.9	2.5	812.2	96.2	536.2	813.1	196.3
1992/93	326.0	2.7	868.9	91.9	551.3	841.4	221.3
1993/94	317.4	2.5	797.6	86.5	546.1	836.2	182.7
1994/95	323.1	2.7	869.4	98.6	567.4	853.8	198.3
1995/96	314.4	2.5	800.9	88.3	544.7	835.8	163.4
1996/97	322.5	2.8	909.1	94.4	573.0	869.5	203.0
1997/98	311.0	2.8	881.4	85.8	579.2	867.9	216.4
1998/99	308.6	2.9	891.5	96.7	575.7	869.7	238.1
1999/00	299.0	2.9	878.1	102.4	585.2	882.6	233.1
2000/01	296.2	2.9	863.7	102.7	588.8	884.8	212.0
2001/02	300.9	3.0	896.6	100.5	601.3	909.0	199.6
2002/03	291.6	3.0	873.6	102.8	594.8	901.1	172.0
2003/04	306.0	3.0	916.2	102.6	615.1	944.9	143.3
2004/05	300.5	3.4	1,015.7	101.3	645.0	978.8	180.2
2005/06	301.1	3.3	980.4	108.6	638.7	994.4	166.3
2006/07	305.5	3.2	988.8	114.7	633.8	1,013.8	141.3
2007/08	318.7	3.4	1,080.7	128.9	655.6	1,057.8	164.2
2008/09	313.5	3.5	1,111.1	110.7	647.1	1,080.9	194.4
2009/10	310.5	3.6	1,115.4	119.0	654.6	1,114.4	195.4
2010/11	310.0	3.5	1,099.6	115.9	647.8	1,128.8	166.3
2011/12	314.9	3.6	1,143.7	121.4	664.7	1,152.0	157.9

Notes: Wheat and coarse grains trade data are on July/June years through 1975/76. From 1976/77 to the present, coarse grains data are on an Oct/Sept trade year.

World Corn and Barley: Supply and Demand

Millions of Metric Tons/Hectares

	Area Harvested	Yield	Production	TY Exports	Feed Dom. Consumpti	Domestic Consumpti	Ending Stocks
Corn							
1989/90	127.3	3.6	461.7	74.5	324.8	474.1	132.9
1990/91	129.2	3.7	482.0	58.8	318.5	473.4	141.4
1991/92	132.6	3.7	493.0	63.0	334.4	493.3	141.0
1992/93	133.2	4.0	535.6	62.6	348.7	512.1	162.7
1993/94	130.7	3.6	475.8	57.4	342.0	509.0	129.4
1994/95	135.2	4.1	559.3	71.9	371.5	535.6	153.2
1995/96	135.0	3.8	516.4	64.8	365.1	536.6	133.0
1996/97	141.7	4.2	593.0	66.7	387.7	560.1	165.8
1997/98	136.3	4.2	574.4	63.1	400.4	573.8	166.4
1998/99	139.2	4.4	606.0	68.7	404.3	581.5	191.0
1999/00	139.1	4.4	608.1	72.3	422.4	605.3	193.8
2000/01	137.3	4.3	591.4	75.9	427.2	610.1	175.1
2001/02	137.7	4.4	601.0	72.8	436.1	624.8	151.4
2002/03	137.4	4.4	603.2	77.0	432.9	627.5	127.0
2003/04	142.0	4.4	627.5	79.1	445.5	649.2	105.4
2004/05	145.5	4.9	715.8	76.0	475.4	689.3	131.9
2005/06	145.7	4.8	699.7	82.7	477.6	706.7	124.9
2006/07	149.9	4.8	714.0	91.5	477.8	728.7	110.2
2007/08	161.2	4.9	794.7	98.3	497.5	773.3	131.6
2008/09	158.8	5.0	799.2	84.0	480.3	783.2	147.5
2009/10	157.7	5.2	819.2	93.0	488.5	822.6	144.2
2010/11	163.4	5.1	829.2	91.6	495.1	844.4	129.1
2011/12	169.3	5.1	865.0	96.3	512.2	869.5	124.5
Barley							
1989/90	73.7	2.3	166.2	18.5	126.0	170.4	27.5
1990/91	73.0	2.5	179.5	19.6	130.8	175.5	31.5
1991/92	76.6	2.2	169.9	19.4	120.3	166.5	34.9
1992/93	73.1	2.3	166.3	16.4	119.0	165.6	35.0
1993/94	73.8	2.3	169.0	18.8	123.8	169.1	34.9
1994/95	72.8	2.2	160.7	15.3	120.9	165.6	30.0
1995/96	68.6	2.1	141.2	13.4	107.8	150.7	20.5
1996/97	65.5	2.3	153.1	17.9	106.3	149.5	24.1
1997/98	64.5	2.4	153.9	12.8	104.1	145.8	32.2
1998/99	60.8	2.2	136.0	17.8	99.5	139.3	29.0
1999/00	54.5	2.3	127.4	17.8	94.0	132.5	23.9
2000/01	53.9	2.5	133.1	16.2	94.6	134.4	22.6
2001/02	56.3	2.5	143.5	17.2	95.5	136.8	29.3
2002/03	55.8	2.4	134.3	16.3	95.0	136.1	27.5
2003/04	59.4	2.4	142.3	14.8	102.8	146.4	23.4
2004/05	58.2	2.6	152.3	17.0	100.2	142.6	33.0
2005/06	56.2	2.4	136.3	17.5	97.5	141.2	28.1
2006/07	57.1	2.4	137.0	14.6	98.4	143.7	21.4
2007/08	57.5	2.3	133.2	18.6	91.4	134.2	20.4
2008/09	55.8	2.8	155.1	18.2	100.2	144.2	31.4
2009/10	55.8	2.7	150.8	17.3	100.7	144.7	37.5
2010/11	50.3	2.4	122.7	15.2	91.1	135.8	24.3
2011/12	50.1	2.7	134.0	17.4	91.9	136.2	22.2

Notes: Coarse grains trade data are on July June years through 1975/76. From 1976/77 to the present, coarse grains data are on an Oct/Sept trade year.

World Rice: Supply and Demand

Millions of Metric Tons/Hectares

	Area Harvested	Yield	Rough Production	Production	TY Exports	Domestic Consumpti	Ending Stocks
Rice, Milled							
1982/83	140.5	3.0	418.2	285.0	11.2	278.7	56.8
1983/84	144.6	3.1	450.9	306.9	11.9	294.4	69.3
1984/85	144.1	3.2	464.9	316.8	11.0	298.4	87.7
1985/86	144.7	3.2	467.3	318.0	11.8	308.0	97.7
1986/87	144.8	3.2	464.6	316.1	12.9	310.4	103.3
1987/88	141.4	3.3	464.8	315.1	11.4	313.1	105.3
1988/89	146.6	3.3	490.8	332.1	14.0	325.7	111.7
1989/90	147.8	3.5	510.3	345.2	11.7	336.3	120.6
1990/91	147.0	3.5	519.4	351.4	12.3	345.3	126.7
1991/92	147.5	3.5	522.8	353.2	14.4	353.2	126.7
1992/93	146.5	3.6	524.2	354.0	14.9	357.5	123.2
1993/94	145.3	3.6	526.1	354.7	16.6	358.9	119.0
1994/95	147.4	3.7	539.9	364.1	20.8	365.5	117.6
1995/96	148.4	3.7	547.3	368.8	19.7	368.3	118.1
1996/97	150.1	3.8	565.3	381.4	18.9	379.2	120.3
1997/98	151.7	3.8	575.2	387.4	27.6	380.0	127.7
1998/99	153.1	3.8	587.0	394.9	24.8	388.6	134.0
1999/00	155.9	3.9	608.8	409.3	22.8	400.2	143.1
2000/01	152.5	3.9	594.3	399.4	24.4	395.8	146.7
2001/02	151.4	3.9	594.7	399.7	27.8	413.5	132.9
2002/03	146.9	3.8	563.5	378.4	27.5	408.4	102.9
2003/04	149.3	3.9	585.4	392.5	27.3	413.9	81.5
2004/05	151.8	3.9	597.0	401.2	29.0	408.7	74.0
2005/06	153.8	4.0	622.9	418.2	29.1	415.6	76.6
2006/07	154.5	4.1	626.2	420.8	31.9	422.3	75.1
2007/08	155.2	4.2	644.8	434.4	29.8	429.5	80.0
2008/09	157.8	4.2	669.1	449.6	29.3	438.0	91.6
2009/10	156.0	4.2	659.4	442.7	31.8	440.1	94.2
2010/11	157.2	4.3	676.5	453.2	35.1	449.6	97.8
2011/12	160.2	4.3	694.1	465.4	32.7	462.9	100.3

Notes: Stocks, exports and consumption are expressed on a milled basis in marketing years.

ENDNOTES TO GRAIN: WORLD MARKETS AND TRADE

REGIONAL TABLES

North America: Canada, Mexico, the United States.

Central America: Belize, Costa Rica, El Salvador, Guatemala, Honduras, Nicaragua, Panama.

Caribbean: Anguilla, Antigua and Barbuda, Aruba, Bahamas, Barbados, Bermuda, British Virgin Islands, Cayman Islands, Cuba, Dominica, Dominican Republic, French West Indies, Grenada, Guadeloupe, Haiti, Jamaica and Dep, Leeward-Windward Islands, Martinique, Montserrat, Netherlands Antilles, Puerto Rico, Kitts and Nevis, St. Lucia, St. Vincent and the Grenadines, Trinidad and Tobago, Turks and Caicos Islands, Virgin Islands of the U.S.

South America: Argentina, Bolivia, Brazil, Chile, Colombia, Ecuador, Falkland Islands (Islas Malvinas), French Guiana, Guyana, Paraguay, Peru, Suriname, Uruguay, Venezuela.

EU: Austria, Belgium/Luxembourg, Bulgaria, Cyprus, Czech Republic, Denmark, Estonia, Finland, France, Germany, Greece, Hungary, Ireland, Italy, Latvia, Lithuania, Malta, Netherlands, Poland, Portugal, Romania, Slovakia, Slovenia, Spain, Sweden, United Kingdom.

Other Europe: Albania, Azores, Bosnia and Herzegovina, Croatia, Former Yugoslavia, Gibraltar, Iceland, Macedonia, Montenegro, Norway, Serbia, Switzerland.

Former Soviet Union: Armenia, Azerbaijan, Belarus, Georgia, Kazakhstan, Kyrgyzstan, Moldova, Russia, Tajikistan, Turkmenistan, Ukraine, Uzbekistan.

Middle East: Bahrain, Iran, Iraq, Israel, Jordan, Kuwait, Lebanon, Oman, Qatar, Saudi Arabia, Syria, Turkey, United Arab Emirates, Yemen.

North Africa: Algeria, Egypt, Libya, Morocco, Tunisia.

Sub-Saharan Africa: all African countries except North Africa.

East Asia: China, Hong Kong, Japan, South Korea, North Korea, Macau, Mongolia, Taiwan.

South Asia: Afghanistan, Bangladesh, Bhutan, India, Nepal, Pakistan, Sri Lanka, Maldives.

Southeast Asia: Brunei, Burma, Cambodia, Indonesia, Laos, Malaysia, Philippines, Singapore, Thailand, Vietnam.

Oceania: Australia, Fiji, New Zealand, Papua New Guinea.

OTHER NOTES

Local Marketing Years (LMY): LMY refers to the 12-month period following the main harvest, when the crop is marketed (i.e., consumed, traded, or stored). The year first listed begins a country's LMY for that commodity (2008/09 starts in 2008); except for summer grains in certain Southern Hemisphere countries and for rice in selected countries, where the second year begins the LMY (2008/09 starts in 2009). Key exporter LMY's are:

Wheat	Corn	Barley	Sorghum
Argentina (Dec/Nov)	Argentina (Mar/Feb)	Australia (Nov/Oct)	Argentina (Mar/Feb)
Australia (Oct/Sep)	Brazil (Mar/Feb)	Canada (Aug/Jul)	Australia (Mar/Feb)
Canada (Aug/Jul)	China (Oct/Sep)	EU-27 (Jul/Jun)	United States (Sep/Aug)
China (Jul/Jun)	South Africa (May/Apr)	Russia (Jul/Jun)	
EU-27 (Jul/Jun)	United States (Sep/Aug)	Ukraine (Jul/Jun)	
India (Apr/Mar)		United States (Jun/May)	
Kazakhstan (Jul/Jun)			
Russia (Jul/Jun)			
Turkey (Jun/May)			
Ukraine (Jul/Jun)			
United States (Jun/May)			

For a complete list of local marketing years, please see the FAS website (<http://www.fas.usda.gov/psdonline/psdAvailability.aspx>).

Stocks: Unless otherwise stated, stock data are based on an aggregate of differing local marketing years and should not be construed as representing world stock levels at a fixed point in time.

Consumption: World totals for consumption reflect total utilization, including food, seed, industrial, feed, and waste; as well as differences in local marketing year imports and local marketing year exports. Consumption statistics for regions and individual countries, however, reflect food, seed, industrial, feed, and waste only.

Trade: All PSD tables are balanced on the different local marketing years. All trade tables contain Trade Year (TY) data which puts all countries on a uniform, 12-month period for analytical comparisons: wheat is July/June; coarse grains, corn, barley, sorghum, oats, and rye are Oct/Sept; and rice is calendar year.

EU Consolidation: The trade figures starting from 1999/00 represent EU-27 and exclude all intra-trade. For the years 1960/61 through 1998/99, figures are the EU-15 and also exclude all intra-trade. EU-15 member states' data for grains are no longer maintained in the official USDA database. Data for the individual NMS-10, plus Bulgaria and Romania, exists only prior to 1999/00.

Statistics: (1) Wheat trade statistics include wheat, flour, and selected pasta products on a grain equivalent basis. (2) Rice trade statistics include rough, brown, milled, and broken on a milled

equivalent basis. (3) Coarse grains statistics include corn, barley, sorghum, oats, rye, millet, and mixed grains but exclude trade in barley malt, millet, and mixed grains.

Unaccounted: This term includes grain in transit, reporting discrepancies in some countries, and trade to countries outside the USDA database.

The Field Crops and Livestock Branch, Industry and Sector Analysis Division, Foreign Agricultural Service, USDA, Washington DC 20250, prepared this circular. Information is gathered from official statistics of foreign governments and other foreign source materials, reports of U.S. agricultural attachés and Foreign Service officers, office research, and related information. Further information may be obtained by writing the Division or telephoning (202) 720-6590.

Note: The previous report in this series was the Grain: World Markets and Trade Foreign Agricultural Service Circular FG 02-12 February 2012. For further details on world grain production, please see World Agricultural Production Foreign Agricultural Service Circular WAP 03-12 March 2012.

This circular is available in its entirety on the World Wide Web via the Foreign Agricultural Service Home Page. The address is: <http://www.fas.usda.gov>