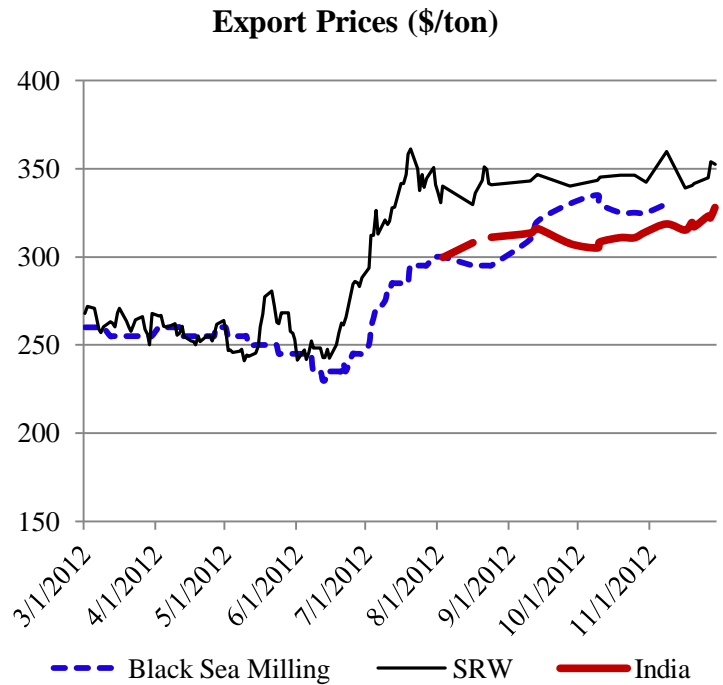
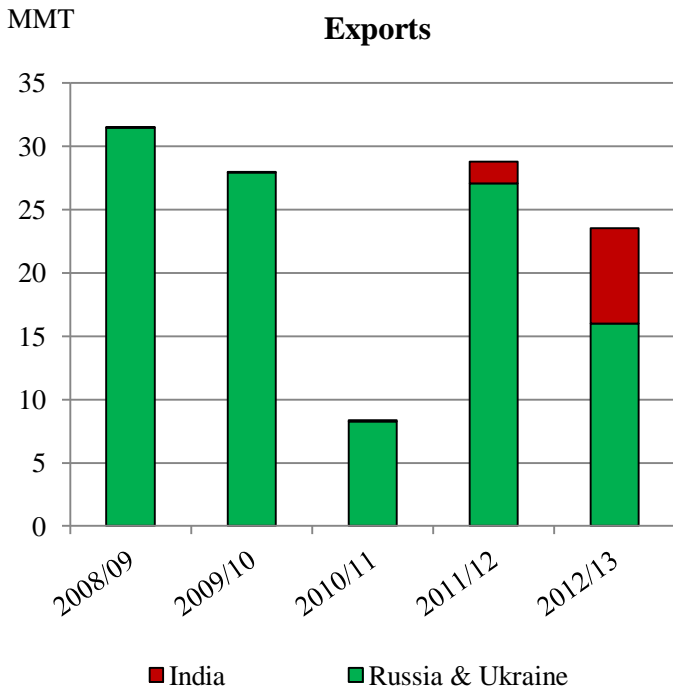




# Grain: World Markets and Trade

## India's Wheat Exports Fill Supply Gap



India is seizing the opportunity to export record quantities of competitively priced wheat. As global exportable supplies tighten, particularly from Russia and Ukraine, India's wheat is effectively replacing Black Sea wheat in several Middle East and East African countries. It is also replacing Australian wheat (milling and feed-quality) in Asian markets, and even displacing Turkish wheat flour in Indonesia.

Ironically, India had a wheat export ban prior to September 2011, but now it is saddled with burdensome stocks and inadequate storage facilities. The government is now permitting limited exports from its huge reserve stocks. Further export increases from India are expected to be constrained by transportation bottlenecks and limited port capacity.

---

## **TABLE OF CONTENTS**

<b>World Markets and Trade: Commentary and Current Data</b>	
Wheat .....	4
Rice .....	9
Coarse Grains .....	14
<b>Historical Data Series for Selected Regions and Countries .....</b>	<b>34</b>
<b>Endnotes to Grain: World Markets and Trade .....</b>	<b>53</b>

The Foreign Agricultural Service (FAS) updates its production, supply and distribution database for cotton, oilseeds, and grains at 9 a.m. on the day the World Agricultural Supply and Demand Estimates (WASDE) report is released. It is available on the FAS website (<http://www.fas.usda.gov/psdonline/>). This circular is released at 10:00 a.m. on the same day, together with its downloadable data set.

## All Grain Summary Comparison

	Marketing Year	Wheat			Rice, Milled			Corn		
		2010/11	2011/12	2012/13	2010/11	2011/12	2012/13	2010/11	2011/12	2012/13
<b>Production</b>										
United States	(Jun-May)	60.1	54.4	61.8	7.6	5.9	6.3	316.2	313.9	272.4
Other		592.2	642.0	593.4	441.7	459.1	459.0	515.2	567.8	576.7
<b>World Total</b>		652.2	696.4	655.1	449.3	465.0	465.3	831.4	881.7	849.1
<b>Domestic Consumption</b>										
United States	(Jun-May)	30.7	32.2	36.4	4.3	3.5	4.0	285.0	279.0	254.4
Other		623.2	657.1	643.9	439.4	451.3	462.1	565.5	585.0	612.1
<b>World Total</b>		653.9	689.3	680.3	443.7	454.8	466.1	850.5	864.0	866.6
<b>Ending Stocks</b>										
United States	(Jun-May)	23.5	20.2	20.5	1.5	1.3	1.0	28.6	25.1	16.4
Other		174.3	175.6	156.4	97.1	104.4	101.6	98.4	105.9	101.2
<b>World Total</b>		197.8	195.8	176.9	98.7	105.7	102.5	127.1	131.0	117.6
<b>TY Imports</b>										
United States	(Jun-May)	2.6	3.0	3.5	0.6	0.7	0.7	0.7	0.8	2.5
Other		128.0	147.6	133.9	33.1	35.3	33.0	90.3	99.2	92.6
<b>World Total</b>		130.6	150.6	137.4	33.7	35.9	33.7	91.0	99.9	95.1
<b>TY Exports</b>										
United States	(Jun-May)	36.0	28.1	29.5	3.2	3.3	3.5	45.2	38.4	31.0
Other		97.7	125.2	110.8	33.0	35.2	32.7	46.6	64.7	66.0
<b>World Total</b>		133.7	153.3	140.3	36.2	38.5	36.1	91.9	103.1	97.0

Note: Consumption in this table has not been adjusted for differences in marketing year imports and exports and therefore differs from global totals shown elsewhere.

Marketing years for U.S. grains are: Wheat (Jun-May), Rice (Aug-Jul), Corn (Sep-Aug).  
'Marketing Year' column is germane for U.S. wheat only.

---

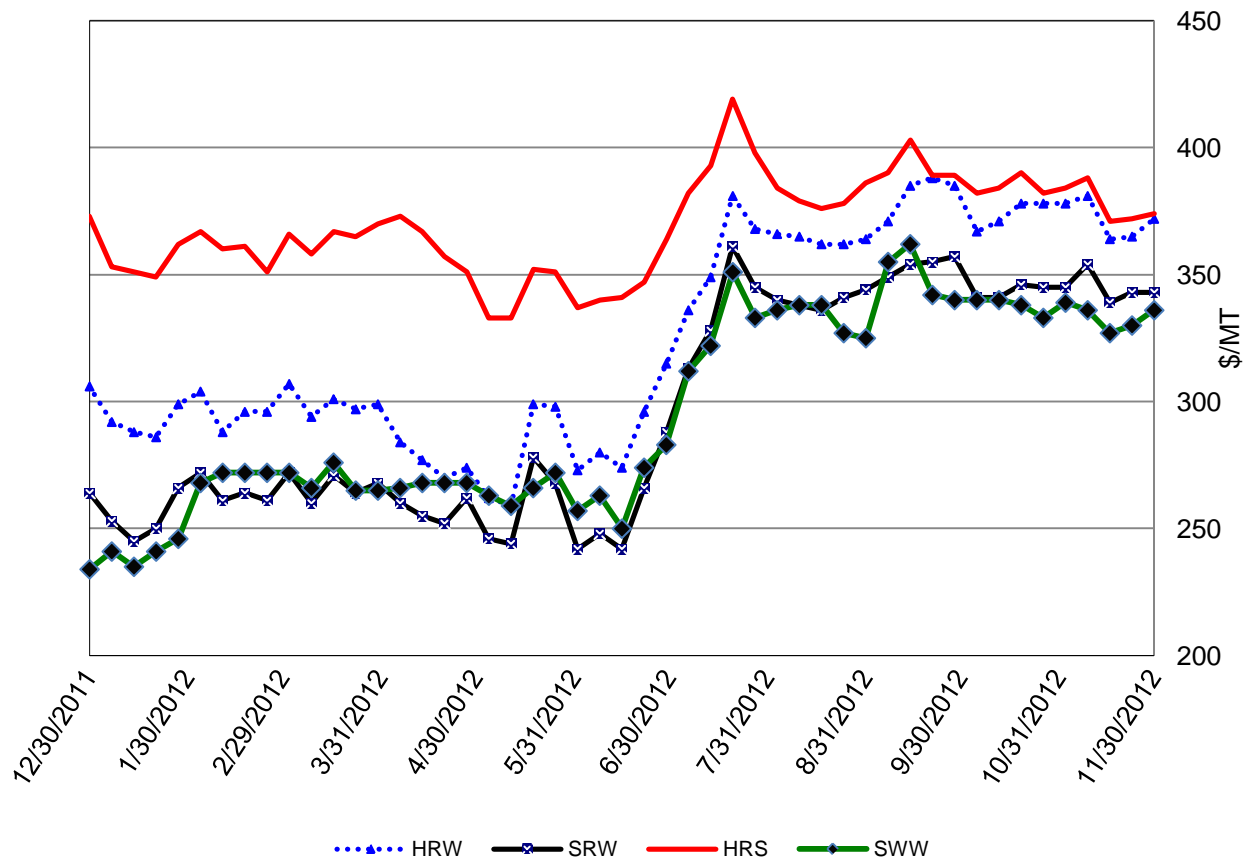
# WHEAT: WORLD MARKETS AND TRADE

## OVERVIEW

Global wheat production for 2012/13 is raised due to larger crops in Australia, Canada, and China. Global trade is boosted primarily on higher demand from Brazil, China, Iran, and Russia. U.S. exports are cut on account of greater competition from Australia, the EU, and South America. The midpoint of the season-average U.S. farm price is lowered \$0.10 to \$8.00/bushel.

## PRICES:

U.S. Weekly FOB Export Bids



**Domestic:** Wheat prices for all classes were slightly lower in November. Although 2013 crop conditions continue to deteriorate, Hard Red Winter (HRW) prices were down \$6/ton to \$372. Hard Red Spring (HRS) was down \$10/ton to \$374, Soft Red Winter (SRW) dipped \$2/ton to \$343, and Soft White Winter (SWW) was down \$3/ton to \$336.

---

## **TRADE CHANGES IN 2012/13**

### **Selected Exporters**

- **Australia** is up 500,000 tons to 19.5 million because of larger crop expectations.
- **EU** is raised 500,000 tons to 18.0 million due to growing competitiveness and increased sales to North Africa and the Middle East.
- **India** is boosted 500,000 tons to a record 7.5 million, as a result of the strong pace of shipments to date, and additional wheat made available from government stocks.
- **Paraguay** is up 500,000 tons to 1.6 million as a result of the strong shipment pace.
- **United States** is cut 1.0 million tons to 29.5 million owing to slow sales and shipments to date and increased foreign competition.

### **Selected Importers**

- **Brazil** is up 500,000 tons to 7.5 million resulting from a smaller, poor-quality crop.
- **China** is boosted 500,000 tons to 3.0 million attributable to recent purchases and strong deliveries to date.
- **Iran** is raised 500,000 tons to 2.5 million as a result of the strong pace of deliveries.
- **Russia** is up 500,000 tons to 1.5 million on expected imports from Kazakhstan.
- **Turkey** is cut 500,000 tons to 3.5 million as the strong early-season purchases are expected to taper off as Russian exports dwindle.

**World Wheat, Flour, and Products Trade**  
**July/June Year, Thousand Metric Tons**

	2008/09	2009/10	2010/11	2011/12	2012/13 Nov	2012/13 Dec
<b>TY Exports</b>						
Argentina	8,651	5,255	7,742	11,949	7,300	7,500
Australia	13,450	13,764	18,477	23,041	19,000	19,500
Canada	18,674	18,992	16,768	17,603	19,000	19,000
EU-27	25,351	22,115	22,906	16,569	17,500	18,000
India	21	62	74	1,699	7,000	7,500
Kazakhstan	5,701	7,871	5,519	11,069	7,000	7,000
Paraguay	784	648	1,269	829	1,100	1,600
Russia	18,393	18,556	3,983	21,627	10,000	10,000
Turkey	2,342	4,363	2,945	3,680	3,500	3,300
Ukraine	13,037	9,337	4,302	5,436	6,000	6,000
Others	10,042	10,428	13,691	11,746	10,855	11,390
<b>Subtotal</b>	116,446	111,391	97,676	125,248	108,255	110,790
<b>United States</b>	27,101	24,172	35,977	28,071	30,500	29,500
<b>World Total</b>	143,547	135,563	133,653	153,319	138,755	140,290
<b>TY Imports</b>						
Afghanistan	3,800	2,500	2,000	2,200	2,000	2,000
Algeria	6,356	5,167	6,436	6,350	5,200	5,200
Bangladesh	2,882	3,353	3,951	2,016	3,000	3,000
Brazil	6,767	6,694	6,746	7,052	7,000	7,500
China	481	1,394	927	2,933	2,500	3,000
Egypt	9,900	10,500	10,600	11,650	9,500	9,500
EU-27	7,737	5,519	4,727	7,370	6,000	6,000
Indonesia	5,419	5,364	6,607	6,457	6,600	6,600
Iran	9,500	3,650	200	2,700	2,000	2,500
Iraq	3,879	3,899	3,632	3,785	3,700	3,700
Israel	2,063	1,862	1,392	2,029	1,800	1,800
Japan	5,156	5,502	5,869	6,354	5,900	5,900
Korea, South	3,371	4,470	4,761	5,188	4,400	4,400
Mexico	3,342	3,196	3,462	5,020	4,200	4,200
Morocco	3,759	2,304	3,903	3,625	4,500	4,500
Nigeria	3,550	4,020	4,051	3,872	3,700	3,700
Peru	1,385	1,703	1,757	1,585	1,600	1,600
Philippines	3,201	3,188	3,271	4,020	3,200	3,200
Russia	203	164	89	550	1,000	1,500
Saudi Arabia	1,275	1,909	1,742	2,903	2,300	2,300
Thailand	1,128	1,600	1,919	2,578	1,800	1,800
Turkey	3,578	3,218	3,517	4,414	4,000	3,500
Venezuela	1,501	1,597	1,469	1,686	1,700	1,700
Vietnam	1,016	1,927	2,460	2,711	2,600	2,600
Yemen	2,796	2,602	2,845	2,637	2,600	2,600
Others	43,217	42,193	39,694	45,881	39,605	39,615
<b>Subtotal</b>	137,262	129,495	128,027	147,566	132,405	133,915
<b>Unaccounted</b>	2,886	2,882	3,055	2,753	2,850	2,875
<b>United States</b>	3,399	3,186	2,571	3,000	3,500	3,500
<b>World Total</b>	143,547	135,563	133,653	153,319	138,755	140,290

TY=Trade Year, see Endnotes.

**World Wheat Production, Consumption, and Stocks**  
**Local Marketing Years, Thousand Metric Tons**

	2008/09	2009/10	2010/11	2011/12	2012/13 Nov	2012/13 Dec
<b>Production</b>						
Argentina	11,000	12,000	17,200	15,500	11,500	11,500
Australia	21,420	21,834	27,410	29,923	21,000	22,000
Brazil	5,880	5,026	5,900	5,800	5,000	4,800
Canada	28,611	26,848	23,300	25,288	26,700	27,200
China	112,464	115,120	115,180	117,400	118,000	120,600
Egypt	7,977	8,523	7,200	8,400	8,500	8,500
EU-27	151,122	138,816	136,017	137,227	131,823	131,726
India	78,570	80,680	80,800	86,870	93,900	93,900
Iran	7,957	13,485	15,030	13,500	14,000	14,000
Kazakhstan	12,538	17,051	9,638	22,732	10,500	10,500
Pakistan	20,959	24,000	23,900	25,000	23,300	23,300
Russia	63,765	61,770	41,508	56,231	38,000	38,000
Turkey	16,800	18,450	17,000	18,800	15,500	15,500
Ukraine	25,885	20,866	16,844	22,124	15,500	15,500
Uzbekistan	6,000	6,200	6,500	6,300	6,700	6,700
Others	43,836	55,426	48,754	50,925	49,750	49,629
<b>Subtotal</b>	614,784	626,095	592,181	642,020	589,673	593,355
<b>United States</b>	68,016	60,366	60,062	54,413	61,755	61,755
<b>World Total</b>	682,800	686,461	652,243	696,433	651,428	655,110
<b>Total Consumption</b>						
Algeria	8,300	8,550	8,750	8,950	9,050	9,050
Brazil	10,700	11,000	10,800	11,200	11,000	11,100
Canada	7,977	6,927	7,822	9,729	8,350	8,850
China	105,500	107,000	110,500	122,500	122,000	123,000
Egypt	17,200	18,100	17,700	18,600	18,900	18,900
EU-27	127,000	125,000	122,250	127,500	123,500	122,000
India	70,924	78,150	81,760	81,406	85,400	85,410
Iran	15,800	16,800	16,200	15,500	15,200	15,700
Kazakhstan	7,500	7,600	6,200	7,400	7,000	7,000
Morocco	7,450	8,100	8,250	8,950	8,400	8,400
Pakistan	22,800	23,000	23,000	23,100	23,200	23,200
Russia	38,900	39,600	38,600	38,000	34,500	34,500
Turkey	16,900	17,100	17,300	18,100	17,500	17,500
Ukraine	11,900	12,300	11,600	14,950	11,800	11,800
Uzbekistan	7,100	7,500	7,700	8,000	7,700	7,700
Others	126,466	132,635	134,757	143,219	140,173	139,792
<b>Subtotal</b>	608,984	622,792	624,027	666,280	638,722	637,515
<b>United States</b>	34,293	30,978	30,710	32,155	36,414	36,415
<b>World Total</b>	643,277	653,770	654,737	698,435	675,136	673,930
<b>Ending Stocks</b>						
Australia	3,109	5,067	8,128	6,977	4,642	5,757
Canada	6,547	7,829	7,176	5,879	5,629	5,629
China	45,803	54,425	59,091	55,946	55,446	55,546
Egypt	4,857	5,605	5,508	6,718	5,618	5,618
EU-27	18,937	16,157	11,745	12,273	9,226	9,999
India	13,430	16,120	15,360	19,950	22,450	21,950
Russia	10,944	14,722	13,736	10,890	4,938	5,890
Others	46,078	53,786	53,559	56,923	47,080	46,045
<b>Subtotal</b>	149,705	173,711	174,303	175,556	155,029	156,434
<b>United States</b>	17,867	26,552	23,466	20,211	19,153	20,513
<b>World Total</b>	167,572	200,263	197,769	195,767	174,182	176,947

## Regional Wheat Imports, Production, Consumption, and Stocks

Thousand Metric Tons

	2008/09	2009/10	2010/11	2011/12	Nov 2012/13	Dec 2012/13
<b>TY Imports</b>						
North America	7,128	6,785	6,462	8,516	8,100	8,100
Central America	1,474	1,445	1,687	1,661	1,545	1,545
South America	13,097	13,173	13,004	13,727	13,440	13,940
European Union	7,737	5,519	4,727	7,370	6,000	6,000
Other Europe	1,712	1,696	1,654	1,940	1,760	1,760
Former Soviet Union - 12	6,569	5,415	5,658	8,021	6,560	7,060
Middle East	28,218	22,557	17,286	23,320	20,555	20,555
North Africa	23,472	21,592	24,180	24,659	22,100	22,100
Sub-Saharan Africa	14,174	16,388	15,259	18,158	15,295	15,295
East Asia	11,322	13,744	13,904	16,865	15,125	15,625
South Asia	10,771	7,608	7,619	5,402	6,420	6,430
Southeast Asia	12,324	13,902	16,334	17,863	16,160	16,160
Others	2,663	2,857	2,824	3,064	2,845	2,845
<b>Total</b>	<b>140,661</b>	<b>132,681</b>	<b>130,598</b>	<b>150,566</b>	<b>135,905</b>	<b>137,415</b>
<b>Production</b>						
North America	100,627	91,362	87,038	83,329	91,710	92,210
South America	20,516	22,039	27,796	25,835	21,159	20,959
European Union	151,122	138,816	136,017	137,227	131,823	131,726
Other Europe	4,710	4,646	3,865	4,359	4,249	4,249
Former Soviet Union - 12	115,486	114,047	81,061	114,801	77,790	77,790
Middle East	30,303	38,940	40,223	40,266	36,790	36,780
North Africa	14,352	20,261	15,933	18,425	16,875	16,875
Sub-Saharan Africa	6,112	6,414	5,300	6,241	6,236	6,236
East Asia	113,806	116,449	116,350	118,774	119,463	121,952
South Asia	103,898	111,200	110,792	116,790	123,870	123,870
Oceania	21,697	22,111	27,687	30,200	21,277	22,277
Others	171	176	181	186	186	186
<b>Total</b>	<b>682,800</b>	<b>686,461</b>	<b>652,243</b>	<b>696,433</b>	<b>651,428</b>	<b>655,110</b>
<b>Domestic Consumption</b>						
North America	48,270	44,205	44,982	49,734	51,464	51,965
South America	24,549	25,698	25,523	25,986	26,000	26,075
European Union	127,000	125,000	122,250	127,500	123,500	122,000
Other Europe	5,585	5,494	5,356	5,593	5,515	5,515
Former Soviet Union - 12	76,056	78,190	74,985	79,750	72,455	72,455
Middle East	52,587	54,441	54,964	56,644	54,330	54,830
North Africa	37,375	39,750	39,225	41,075	40,950	40,950
Sub-Saharan Africa	19,094	20,996	20,477	22,294	21,365	21,315
East Asia	117,218	120,187	124,077	137,001	136,098	136,987
South Asia	105,229	113,811	116,851	115,592	121,240	121,250
Southeast Asia	12,104	13,188	15,093	17,136	16,410	16,410
Oceania	8,280	6,085	6,755	7,637	7,505	7,310
Others	3,363	3,295	3,361	3,317	3,255	3,255
<b>Total</b>	<b>636,710</b>	<b>650,340</b>	<b>653,899</b>	<b>689,259</b>	<b>680,087</b>	<b>680,317</b>
<b>Ending Stocks</b>						
North America	24,729	34,901	31,029	26,485	25,132	26,492
South America	4,902	6,467	8,052	3,943	4,081	3,852
European Union	18,937	16,157	11,745	12,273	9,226	9,999
Other Europe	2,107	2,120	1,453	1,514	1,438	1,238
Former Soviet Union - 12	21,894	25,910	23,769	27,117	15,225	15,867
Middle East	11,635	14,010	12,702	12,193	12,219	11,883
North Africa	9,216	10,949	11,473	13,013	10,713	10,638
Sub-Saharan Africa	1,680	2,184	1,690	2,658	2,044	2,159
East Asia	48,636	57,260	61,999	59,146	58,131	58,231
South Asia	17,393	21,536	21,238	25,644	27,344	26,844
Southeast Asia	2,813	3,115	3,887	4,137	3,392	3,392
Oceania	3,316	5,248	8,360	7,247	4,884	5,999
Others	314	406	372	397	353	353
<b>Total</b>	<b>167,572</b>	<b>200,263</b>	<b>197,769</b>	<b>195,767</b>	<b>174,182</b>	<b>176,947</b>

NOTES: Regional definitions appear on last page of this circular. Imports are reported on a trade year basis. All other data are reported using local marketing years.



---

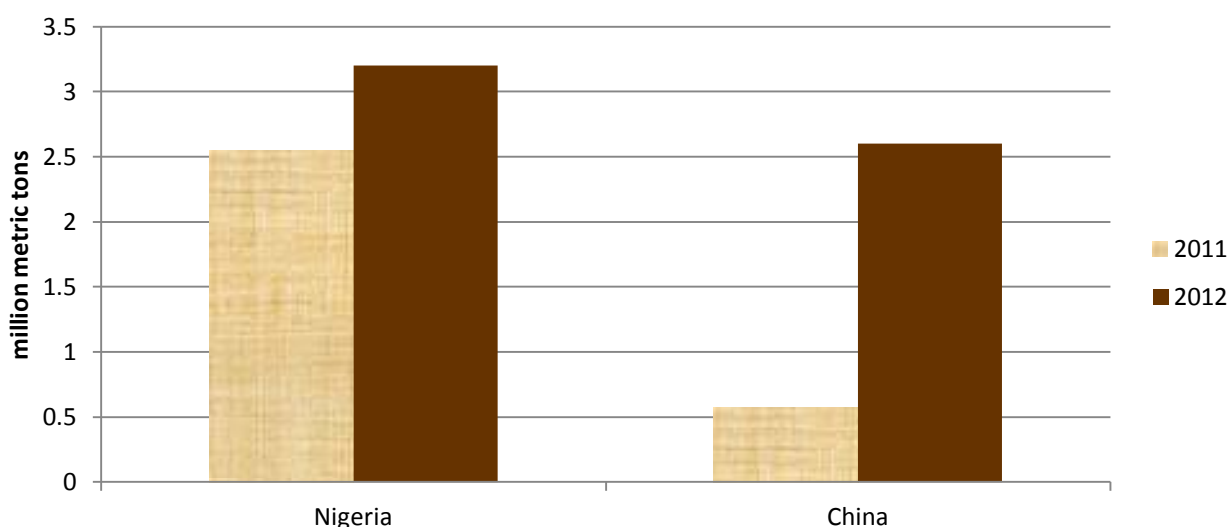
## RICE: WORLD MARKETS AND TRADE

### OVERVIEW

Global rice production in 2012/13 is forecast at a record and essentially on par with the previous year. Consumption continues to climb to new record levels. Stocks are forecast down but still at the second highest level in a decade. Trade is forecast at comparable levels to 2010/11. U.S. production and trade are up from the previous year.

### FEATURE

#### Expanding Import Demand Not Production Driven



In 2012, changes in policies and prices, as opposed to production shortfalls, have helped global rice trade to rise to a new record of 38.5 million tons.

In the case of Nigeria, traders reacted to the announced imposition of future higher import levies by stockpiling. The levies are designed to protect and stimulate domestic production in response to the government's declared goal of self-sufficiency.

China quadrupled imports to become the second-largest importer, a massive leap from the eighteenth position in 2011. Despite record production in China, rising demand has helped make Vietnamese imports more competitively priced in southern China.

---

## **SELECTED TRADE CHANGES**

- **Vietnamese exports** are up 300,000 tons to a record 7.5 million in 2012 on the pace of shipments. **Vietnamese imports** are halved to 200,000 tons in 2013 as relative prices reduce the demand for Cambodian rice.
- **Iranian imports** are down 150,000 tons to 1.8 million in both 2012 and 2013.
- **Iraqi imports** are up 100,000 tons to 1.4 million in 2012 on account of higher shipments, especially from Thailand.

**World Rice Trade**  
**January/December Year, Thousand Metric Tons**

	2008/09	2009/10	2010/11	2011/12	2012/13 Nov	2012/13 Dec
<b>TY Exports</b>						
Argentina	594	468	732	675	525	525
Australia	17	54	311	450	500	500
Brazil	591	430	1,296	1,200	800	800
Burma	1,052	445	778	700	600	600
Cambodia	820	750	860	800	950	950
China	783	619	487	400	500	500
Egypt	575	570	320	600	850	850
EU-27	150	282	241	210	235	235
Guyana	244	275	250	230	250	250
India	2,149	2,228	4,637	10,000	6,500	6,500
Japan	200	200	200	200	200	200
Pakistan	3,187	4,000	3,414	3,750	4,000	4,000
Thailand	8,570	9,047	10,647	6,500	8,000	8,000
Uruguay	926	808	841	1,050	850	850
Vietnam	5,950	6,734	7,000	7,500	7,000	7,000
Others	576	768	953	944	905	905
<b>Subtotal</b>	26,384	27,678	32,967	35,209	32,665	32,665
<b>United States</b>	3,017	3,868	3,247	3,300	3,400	3,450
<b>World Total</b>	29,401	31,546	36,214	38,509	36,065	36,115
<b>TY Imports</b>						
Brazil	650	778	591	720	750	750
Cameroon	300	300	310	375	400	400
China	337	366	575	2,600	2,000	2,000
Cote d'Ivoire	800	840	935	1,300	950	950
Cuba	457	498	558	450	525	525
EU-27	1,383	1,216	1,475	1,200	1,400	1,400
Ghana	410	320	545	475	400	400
Hong Kong	397	390	381	415	425	425
Indonesia	250	1,150	3,098	1,700	1,450	1,450
Iran	1,470	1,520	1,870	1,750	1,950	1,800
Iraq	1,089	1,188	1,036	1,350	1,350	1,350
Japan	750	649	697	700	700	700
Kenya	295	280	335	390	340	360
Korea, South	241	320	532	240	640	640
Malaysia	1,086	907	1,076	1,085	1,050	1,050
Mexico	610	575	705	640	725	725
Mozambique	385	325	360	375	375	375
Nigeria	2,000	2,000	2,550	3,200	2,250	2,250
Philippines	2,000	2,400	1,200	1,500	1,500	1,500
Saudi Arabia	1,072	1,069	1,059	1,150	1,225	1,225
Senegal	715	685	805	1,200	820	820
South Africa	745	733	885	950	1,000	1,000
Thailand	300	300	200	600	400	400
United Arab Emirates	380	400	420	430	440	440
Yemen	329	330	337	400	350	425
Others	7,897	9,217	10,565	10,086	9,800	9,610
<b>Subtotal</b>	26,348	28,756	33,100	35,281	33,215	32,970
<b>Unaccounted</b>	2,371	2,228	2,493	2,578	2,150	2,445
<b>United States</b>	682	562	621	650	700	700
<b>World Total</b>	29,401	31,546	36,214	38,509	36,065	36,115

TY=Trade Year, see Endnotes.

Note about dates: 2012/13 is calendar year 2013, 2011/12 is calendar year 2012, and so on.

**World Rice Production, Consumption, and Stocks**  
**Local Marketing Years, Thousand Metric Tons**

	2008/09	2009/10	2010/11	2011/12	2012/13 Nov	2012/13 Dec
<b>Milled Production</b>						
Bangladesh	31,200	31,000	31,700	33,700	33,800	33,800
Brazil	8,570	7,929	9,300	7,888	7,820	7,820
Burma	11,200	11,642	10,528	10,816	10,750	10,750
Cambodia	3,992	4,056	4,233	4,268	4,500	4,500
China	134,330	136,570	137,000	140,700	143,000	143,000
Egypt	4,673	4,564	3,100	4,250	4,700	4,700
India	99,180	89,090	95,980	104,320	99,000	99,000
Indonesia	38,310	36,370	35,500	36,500	36,900	36,900
Japan	8,029	7,711	7,720	7,646	7,500	7,755
Korea, South	4,843	4,916	4,295	4,224	4,100	4,006
Nepal	2,850	2,900	2,900	2,900	2,900	2,900
Pakistan	6,900	6,800	5,000	6,500	6,700	6,700
Philippines	10,755	9,772	10,539	10,700	11,000	11,000
Thailand	19,850	20,260	20,262	20,460	20,500	20,500
Vietnam	24,393	24,993	26,371	27,075	27,100	27,710
Others	33,080	35,303	37,280	37,198	37,713	37,973
<b>Subtotal</b>	<b>442,155</b>	<b>433,876</b>	<b>441,708</b>	<b>459,145</b>	<b>457,983</b>	<b>459,014</b>
<b>United States</b>	<b>6,546</b>	<b>7,133</b>	<b>7,593</b>	<b>5,868</b>	<b>6,327</b>	<b>6,327</b>
<b>World Total</b>	<b>448,701</b>	<b>441,009</b>	<b>449,301</b>	<b>465,013</b>	<b>464,310</b>	<b>465,341</b>
<b>Consumption and Residual</b>						
Bangladesh	31,200	31,600	32,400	34,300	34,500	34,500
Brazil	8,400	8,477	8,200	8,050	8,050	8,050
Burma	10,800	10,890	10,100	10,190	10,380	10,380
Cambodia	3,220	3,270	3,370	3,450	3,590	3,590
China	133,000	134,320	135,000	139,500	144,000	144,000
Egypt	4,270	3,940	3,300	3,620	3,900	3,900
EU-27	3,075	3,150	3,250	3,325	3,350	3,375
India	91,090	85,508	90,206	92,320	95,250	95,250
Indonesia	37,100	38,000	39,000	39,550	40,000	40,000
Japan	8,326	8,200	8,200	8,050	8,050	8,250
Korea, South	4,789	4,701	5,175	4,977	4,800	4,800
Nigeria	4,220	4,580	5,030	5,200	5,500	5,500
Philippines	13,100	13,125	12,900	12,850	12,950	12,950
Thailand	9,500	10,200	10,300	10,400	10,600	10,600
Vietnam	19,000	19,150	19,400	19,850	20,100	20,100
Others	50,338	52,171	53,549	55,655	56,582	56,899
<b>Subtotal</b>	<b>433,065</b>	<b>434,216</b>	<b>441,508</b>	<b>454,490</b>	<b>463,831</b>	<b>464,532</b>
<b>United States</b>	<b>4,082</b>	<b>4,016</b>	<b>4,317</b>	<b>3,472</b>	<b>4,039</b>	<b>3,975</b>
<b>World Total</b>	<b>437,147</b>	<b>438,232</b>	<b>445,825</b>	<b>457,962</b>	<b>467,870</b>	<b>468,507</b>
<b>Ending Stocks</b>						
China	38,546	40,534	42,574	44,954	45,854	45,854
India	19,000	20,500	23,500	25,100	21,600	21,600
Indonesia	7,057	6,577	6,175	4,825	3,175	3,175
Japan	2,715	2,693	2,689	2,785	2,735	2,790
Philippines	4,673	3,520	2,459	1,809	1,359	1,359
Thailand	4,787	6,100	5,615	9,775	12,075	12,075
Vietnam	1,961	1,470	1,941	1,766	2,261	2,576
Others	12,681	12,596	12,183	13,384	12,234	12,146
<b>Subtotal</b>	<b>91,420</b>	<b>93,990</b>	<b>97,136</b>	<b>104,398</b>	<b>101,293</b>	<b>101,575</b>
<b>United States</b>	<b>977</b>	<b>1,184</b>	<b>1,514</b>	<b>1,303</b>	<b>960</b>	<b>960</b>
<b>World Total</b>	<b>92,397</b>	<b>95,174</b>	<b>98,650</b>	<b>105,701</b>	<b>102,253</b>	<b>102,535</b>

Note: All data are reported on a milled basis.

## Regional Rice Imports, Production, Consumption, and Stocks

Thousand Metric Tons

	2008/09	2009/10	2010/11	2011/12	Nov 2012/13	Dec 2012/13
<b>TY Imports</b>						
North America	1,614	1,495	1,654	1,630	1,765	1,765
Caribbean	902	969	1,099	935	1,010	1,010
South America	1,116	1,354	1,371	1,645	1,605	1,630
Other Europe	126	126	139	143	137	137
Former Soviet Union - 12	412	401	335	348	408	398
Middle East	5,349	5,808	5,974	6,250	6,490	6,415
North Africa	155	345	364	900	520	520
Sub-Saharan Africa	8,200	8,208	9,725	11,695	9,790	9,830
East Asia	1,873	1,960	2,399	4,175	3,995	3,970
South Asia	524	1,016	1,864	790	800	800
Southeast Asia	4,542	5,537	6,504	5,410	5,230	5,030
Others	2,217	2,099	2,293	2,010	2,165	2,165
<b>Total</b>	<b>27,030</b>	<b>29,318</b>	<b>33,721</b>	<b>35,931</b>	<b>33,915</b>	<b>33,670</b>
<b>Production</b>						
North America	6,707	7,315	7,739	5,979	6,455	6,455
Caribbean	833	954	938	1,024	980	952
South America	16,459	15,664	17,197	15,203	15,508	15,558
European Union	1,773	2,176	2,172	2,090	2,054	2,042
Former Soviet Union - 12	902	1,143	1,321	1,290	1,319	1,329
Middle East	2,075	2,049	2,123	2,169	2,150	2,150
North Africa	4,693	4,598	3,139	4,289	4,729	4,729
Sub-Saharan Africa	10,497	11,655	12,829	12,195	12,746	12,746
East Asia	150,087	151,828	151,801	155,345	157,261	157,662
South Asia	142,623	132,765	138,336	151,069	145,610	145,610
Southeast Asia	111,389	110,063	110,466	112,952	113,981	114,591
Others	663	799	1,240	1,408	1,517	1,517
<b>Total</b>	<b>448,701</b>	<b>441,009</b>	<b>449,301</b>	<b>465,013</b>	<b>464,310</b>	<b>465,341</b>
<b>Domestic Consumption</b>						
North America	5,177	5,160	5,417	4,668	5,219	5,155
Central America	1,095	1,114	1,114	1,160	1,151	1,156
Caribbean	1,774	1,880	2,035	1,997	2,051	2,023
South America	14,782	14,915	14,561	14,278	14,240	14,405
European Union	3,075	3,150	3,250	3,325	3,350	3,375
Former Soviet Union - 12	1,238	1,326	1,428	1,421	1,497	1,497
Middle East	7,627	7,756	8,109	8,350	8,560	8,465
North Africa	4,402	4,307	3,657	4,009	4,299	4,299
Sub-Saharan Africa	17,718	19,644	21,366	22,491	22,991	23,046
East Asia	149,585	150,349	151,733	155,897	160,181	160,596
South Asia	131,561	126,162	130,810	135,628	138,980	138,980
Southeast Asia	96,910	98,916	99,572	100,851	102,385	102,385
Others	566	619	645	684	737	737
<b>Total</b>	<b>435,510</b>	<b>435,298</b>	<b>443,697</b>	<b>454,759</b>	<b>465,641</b>	<b>466,119</b>
<b>Ending Stocks</b>						
North America	1,143	1,322	1,734	1,432	1,110	1,110
Central America	205	240	244	289	277	300
Caribbean	114	126	131	193	144	144
South America	2,230	1,859	2,012	1,209	1,474	1,534
European Union	1,023	1,122	1,176	1,024	840	856
Middle East	1,997	1,659	1,807	1,742	1,841	1,742
North Africa	564	498	122	702	802	802
Sub-Saharan Africa	1,017	1,046	1,337	2,495	1,835	1,860
East Asia	42,493	45,098	46,667	48,782	49,512	49,473
South Asia	21,523	22,561	25,542	27,946	24,116	24,116
Southeast Asia	19,934	19,441	17,653	19,662	20,033	20,348
Oceania	26	46	27	60	104	85
Others	128	156	198	165	165	165
<b>Total</b>	<b>92,397</b>	<b>95,174</b>	<b>98,650</b>	<b>105,701</b>	<b>102,253</b>	<b>102,535</b>

NOTES: Regional definitions appear on last page of this circular. Imports are reported on a trade year basis. All other data are reported using local marketing years.

---

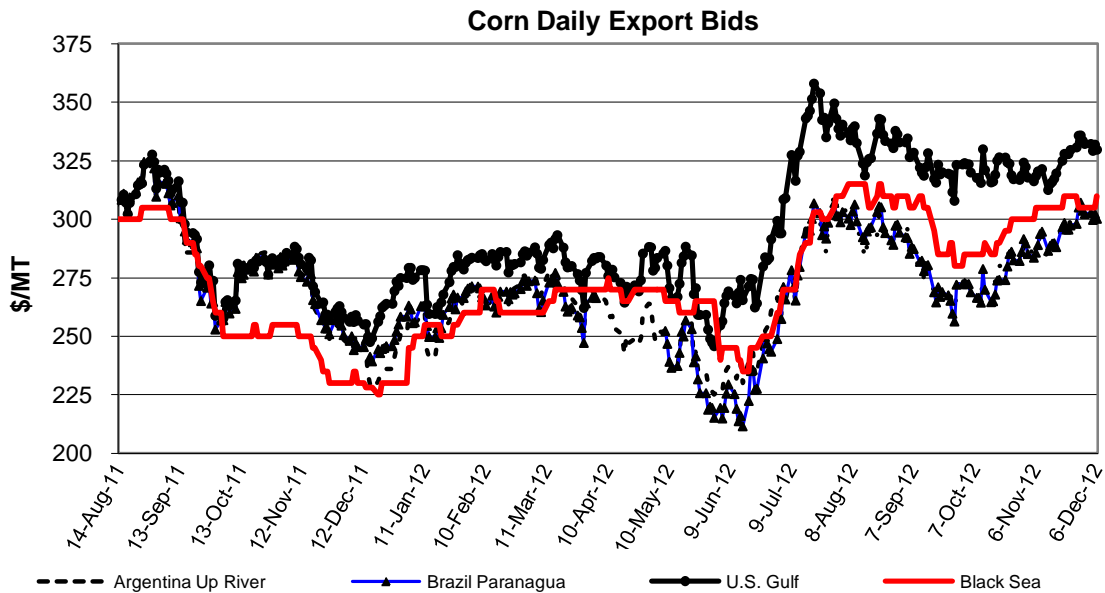
## COARSE GRAINS: WORLD MARKETS AND TRADE

### OVERVIEW

Global corn production is up, mainly due to a larger crop in China. Global corn trade is boosted nearly 1.5 million tons this month, and 4.0 million tons over the past 2 months, largely on higher import demand from the EU. Despite slow sales and shipments, U.S. corn exports remain unchanged. The season-average farm price is again projected lower from last month (although it remains a record) on strong early-season marketings at relatively lower prices.

### PRICES

Corn export quotes for all major suppliers rose since the release of USDA's November WASDE report. U.S. quotes are up over \$8/ton to \$330, despite sluggish sales, due in part to a strong basis as a result of low water levels in the Mississippi River which have been restricting barge traffic. In recent days, however, prices have eased on continued weak sales. Since reaching lows in late September, South American quotes have been rising steadily and have gained over 15 percent to about \$300/ton, but remain \$30/ton cheaper than U.S.



---

## **TRADE CHANGES IN 2012/13**

### **Selected Exporters**

- **Canadian corn** is raised 500,000 tons to 1.5 million because of a substantial boost to exportable supplies (larger crop).
- **Paraguayan corn** is up 200,000 tons to 1.6 million on account of robust early-season shipments.
- **Russian corn** is raised 500,000 tons to a record 2.3 million based on greater exportable supplies and strong demand, especially from the EU.
- **South African corn** is up 200,000 tons to 2.5 million with greater exportable supplies (2011/12 crop, harvested May 2012).
- **Russian barley** is boosted by 200,000 tons to 2.2 million on strong early-season shipments.
- **Argentine sorghum** is raised 200,000 tons to 2.6 million on stronger demand from Colombia. (**Colombian imports** are raised 200,000 tons to 600,000).

### **Selected Importers**

- **EU corn** is boosted sharply by 1.5 million tons again this month to 8.0 million based on the pace of import licenses in response to tighter supplies of other feed grains.

**World Coarse Grain Trade**  
**October/September Year, Thousand Metric Tons**

	2008/09	2009/10	2010/11	2011/12	2012/13 Nov	2012/13 Dec
<b>TY Exports</b>						
Argentina	10,249	19,030	18,628	22,300	23,905	24,105
Australia	4,873	4,414	4,899	7,278	5,025	5,050
Brazil	7,187	8,627	11,592	12,679	21,005	21,005
Canada	3,852	3,068	4,427	3,755	4,150	4,675
EU-27	4,338	4,267	5,860	7,045	4,005	4,005
India	2,642	2,072	3,437	4,850	3,050	3,050
Paraguay	1,864	1,392	1,203	2,306	1,405	1,605
Russia	4,945	2,549	1,028	5,994	3,855	4,555
South Africa	2,159	1,634	2,857	1,853	2,320	2,520
Ukraine	11,380	10,936	7,456	17,333	15,010	15,010
Others	5,638	7,113	5,515	6,952	4,455	4,380
<b>Subtotal</b>	59,127	65,102	66,902	92,345	88,185	89,960
<b>United States</b>	51,558	53,989	49,292	40,192	33,745	33,745
<b>World Total</b>	110,685	119,091	116,194	132,537	121,930	123,705
<b>TY Imports</b>						
Algeria	2,067	2,576	2,945	3,600	2,900	2,900
Brazil	1,497	1,049	633	1,216	1,105	1,105
Chile	1,317	1,275	1,271	1,517	1,200	1,225
China	1,651	3,777	2,697	7,924	4,500	4,500
Colombia	3,483	4,102	4,148	4,079	4,155	4,355
Cuba	708	736	838	746	850	850
Dominican Republic	973	1,071	1,001	1,050	1,100	1,100
Egypt	5,093	5,897	5,839	7,185	5,575	5,575
EU-27	2,988	3,012	8,687	7,105	7,055	8,555
Indonesia	317	1,321	3,041	1,700	1,500	1,500
Iran	5,000	5,100	4,000	5,200	4,500	4,500
Israel	1,295	1,592	1,446	1,585	1,435	1,435
Japan	19,609	19,190	18,590	17,730	17,910	17,910
Jordan	785	713	917	1,100	900	1,000
Korea, South	7,248	8,509	8,168	7,719	8,060	8,060
Malaysia	2,447	3,107	2,809	3,200	3,000	3,100
Mexico	10,465	10,913	10,762	12,854	11,425	11,425
Morocco	1,833	2,194	2,059	2,505	2,525	2,525
Peru	1,520	1,886	2,079	1,872	2,025	2,025
Saudi Arabia	9,186	9,076	8,138	10,505	9,105	9,105
Syria	2,834	2,274	1,959	1,500	1,500	1,500
Taiwan	4,658	4,663	4,278	4,550	4,450	4,450
Tunisia	875	1,202	958	1,100	1,050	1,050
Venezuela	1,340	2,198	1,251	2,500	2,000	2,000
Vietnam	1,250	1,600	1,000	1,500	1,100	1,100
Others	15,033	14,211	13,223	13,697	13,200	13,215
<b>Subtotal</b>	105,472	113,244	112,737	125,239	114,125	116,065
<b>Unaccounted</b>	2,406	3,572	1,007	4,158	3,105	2,915
<b>United States</b>	2,807	2,275	2,450	3,140	4,700	4,725
<b>World Total</b>	110,685	119,091	116,194	132,537	121,930	123,705

TY=Trade Year, see Endnotes.



**World Coarse Grains Production, Consumption, and Stocks**  
**Local Marketing Years, Thousand Metric Tons**

	2008/09	2009/10	2010/11	2011/12	2012/13 Nov	2012/13 Dec
<b>Production</b>						
Argentina	19,634	30,231	33,258	30,105	39,352	38,852
Australia	12,280	10,920	11,472	12,325	11,422	10,952
Brazil	53,486	58,412	60,380	75,883	73,493	73,493
Canada	27,184	22,477	22,590	22,829	23,635	24,260
China	172,391	169,775	183,398	199,660	207,010	215,010
Ethiopia	9,034	8,046	10,469	11,435	11,330	11,330
EU-27	162,102	155,038	140,497	147,442	140,276	140,219
India	39,550	33,890	43,370	42,060	37,610	37,610
Indonesia	8,700	6,900	6,800	8,900	8,900	8,900
Mexico	32,222	27,273	29,226	25,707	27,778	27,778
Nigeria	26,670	23,250	23,250	23,800	24,010	24,010
Russia	40,881	31,843	16,416	32,796	28,350	29,350
South Africa	13,084	13,881	11,321	12,914	13,973	13,973
Turkey	10,408	11,176	10,185	11,275	10,575	10,575
Ukraine	26,275	24,143	21,442	33,336	29,060	28,560
Others	131,832	137,577	144,025	138,383	139,394	139,236
<b>Subtotal</b>	<b>785,733</b>	<b>764,832</b>	<b>768,099</b>	<b>828,850</b>	<b>826,168</b>	<b>834,108</b>
<b>United States</b>	<b>325,867</b>	<b>348,755</b>	<b>330,236</b>	<b>323,697</b>	<b>284,840</b>	<b>284,840</b>
<b>World Total</b>	<b>1,111,600</b>	<b>1,113,587</b>	<b>1,098,335</b>	<b>1,152,547</b>	<b>1,111,008</b>	<b>1,118,948</b>
<b>Domestic Consumption</b>						
Argentina	8,768	10,054	11,383	10,760	13,202	12,702
Brazil	48,191	49,714	52,733	55,748	58,688	58,688
Canada	22,892	22,231	21,146	20,224	20,345	20,380
China	161,062	173,151	188,175	197,105	210,505	218,505
Egypt	12,162	13,072	13,595	12,850	13,350	13,350
Ethiopia	9,033	8,543	9,925	11,260	11,182	11,182
EU-27	151,855	150,080	152,400	149,360	148,160	149,460
India	36,500	32,000	38,850	37,550	35,480	35,480
Japan	19,965	19,645	18,875	17,990	18,110	18,110
Mexico	42,035	40,815	39,485	38,545	39,290	39,290
Nigeria	26,550	23,050	23,200	23,750	24,000	24,000
Russia	33,011	30,440	18,131	27,528	25,800	25,800
South Africa	10,468	10,833	11,218	11,318	11,598	11,598
Turkey	10,700	10,865	11,075	11,825	11,375	11,375
Ukraine	13,696	12,964	13,742	15,550	14,610	14,110
Others	196,073	201,132	207,883	206,358	210,842	210,337
<b>Subtotal</b>	<b>805,494</b>	<b>816,468</b>	<b>832,546</b>	<b>862,429</b>	<b>863,738</b>	<b>871,277</b>
<b>United States</b>	<b>275,978</b>	<b>295,337</b>	<b>297,948</b>	<b>290,020</b>	<b>265,876</b>	<b>265,900</b>
<b>World Total</b>	<b>1,081,472</b>	<b>1,111,805</b>	<b>1,130,494</b>	<b>1,152,449</b>	<b>1,129,614</b>	<b>1,137,177</b>
<b>Ending Stocks</b>						
Brazil	12,450	10,287	10,635	10,870	10,775	10,775
Canada	6,326	5,635	3,623	3,433	3,095	3,183
China	52,206	52,402	50,134	60,482	61,209	61,227
EU-27	20,844	25,854	16,339	15,025	10,198	10,134
Iran	3,124	4,063	3,559	3,239	2,819	2,819
Saudi Arabia	2,548	2,454	1,650	3,400	2,850	2,850
South Africa	4,327	5,367	3,576	3,260	3,078	3,195
Others	46,085	42,557	42,789	37,177	33,523	32,749
<b>Subtotal</b>	<b>147,910</b>	<b>148,619</b>	<b>132,305</b>	<b>136,886</b>	<b>127,547</b>	<b>126,932</b>
<b>United States</b>	<b>47,060</b>	<b>48,133</b>	<b>32,288</b>	<b>27,805</b>	<b>19,528</b>	<b>19,530</b>
<b>World Total</b>	<b>194,970</b>	<b>196,752</b>	<b>164,593</b>	<b>164,691</b>	<b>147,075</b>	<b>146,462</b>

## Regional Coarse Grains Imports, Production, Consumption, and Stocks

Thousand Metric Tons

	2008/09	2009/10	2010/11	2011/12	Nov 2012/13	Dec 2012/13
<b>TY Imports</b>						
North America	15,172	15,199	14,267	16,765	16,670	16,695
Central America	2,491	2,537	2,900	2,839	3,050	3,050
Caribbean	2,011	2,139	2,195	2,176	2,325	2,325
South America	9,745	11,108	10,479	11,813	11,330	11,505
European Union	2,988	3,012	8,687	7,105	7,055	8,555
Former Soviet Union - 12	664	456	1,184	1,100	1,070	1,095
Middle East	21,247	21,318	18,728	22,535	19,895	19,995
North Africa	10,592	13,107	12,344	15,090	12,800	12,800
Sub-Saharan Africa	3,867	2,728	2,026	2,834	2,560	2,600
East Asia	33,347	36,268	33,889	38,103	35,050	35,050
Southeast Asia	5,405	6,725	7,544	7,060	6,065	6,165
Others	750	922	944	959	955	955
<b>Total</b>	<b>108,279</b>	<b>115,519</b>	<b>115,187</b>	<b>128,379</b>	<b>118,825</b>	<b>120,790</b>
<b>Production</b>						
North America	385,273	398,505	382,052	372,233	336,253	336,878
South America	84,977	100,605	105,355	117,766	125,614	125,316
European Union	162,102	155,038	140,497	147,442	140,276	140,219
Other Europe	12,273	11,787	12,139	11,463	8,492	8,492
Former Soviet Union - 12	78,966	67,580	47,573	78,141	68,746	68,546
Middle East	16,046	18,950	18,750	19,041	18,471	18,461
North Africa	10,218	14,890	12,358	11,221	10,681	10,681
Sub-Saharan Africa	96,141	92,424	100,727	97,802	101,727	101,727
East Asia	174,467	171,831	185,366	201,796	208,919	217,269
South Asia	45,688	40,281	49,729	48,343	44,068	44,068
Southeast Asia	27,734	25,451	26,934	29,552	30,790	30,790
Oceania	12,927	11,567	12,119	12,972	12,069	11,599
Others	4,788	4,678	4,736	4,775	4,902	4,902
<b>Total</b>	<b>1,111,600</b>	<b>1,113,587</b>	<b>1,098,335</b>	<b>1,152,547</b>	<b>1,111,008</b>	<b>1,118,948</b>
<b>Domestic Consumption</b>						
North America	340,905	358,383	358,579	348,789	325,511	325,570
South America	75,990	79,414	84,715	87,313	93,114	92,709
European Union	151,855	150,080	152,400	149,360	148,160	149,460
Other Europe	10,845	10,752	10,798	10,514	9,129	9,129
Former Soviet Union - 12	58,063	54,955	41,922	54,201	51,781	50,781
Middle East	38,003	38,699	38,285	39,834	39,579	39,654
North Africa	21,187	24,679	25,607	25,240	25,060	25,060
Sub-Saharan Africa	96,113	92,097	99,564	97,136	101,485	101,535
East Asia	195,705	207,953	221,551	229,626	242,971	251,321
South Asia	42,673	38,549	45,329	43,973	41,948	41,948
Southeast Asia	30,300	31,175	33,692	35,345	36,250	36,350
Oceania	7,897	7,702	7,549	6,552	7,252	6,627
Others	9,403	9,488	9,773	9,858	10,173	10,123
<b>Total</b>	<b>1,078,939</b>	<b>1,103,926</b>	<b>1,129,764</b>	<b>1,137,741</b>	<b>1,132,413</b>	<b>1,140,267</b>
<b>Ending Stocks</b>						
North America	58,621	55,774	38,307	33,330	24,457	24,618
South America	16,796	16,702	18,422	14,091	15,871	15,183
European Union	20,844	25,854	16,339	15,025	10,198	10,134
Other Europe	1,538	1,669	1,658	880	777	748
Former Soviet Union - 12	9,318	7,371	5,505	6,010	5,162	4,930
Middle East	8,540	9,325	7,590	9,059	7,647	7,671
North Africa	2,741	5,387	4,908	5,611	4,207	4,207
Sub-Saharan Africa	9,812	10,153	9,997	9,886	8,826	8,948
East Asia	55,934	55,875	53,394	63,561	64,291	64,299
South Asia	2,086	1,670	2,592	2,047	1,122	1,122
Southeast Asia	4,448	3,379	3,502	3,248	2,623	2,718
Oceania	3,349	2,782	1,594	1,258	1,100	1,080
Others	943	811	785	685	794	804
<b>Total</b>	<b>194,970</b>	<b>196,752</b>	<b>164,593</b>	<b>164,691</b>	<b>147,075</b>	<b>146,462</b>

NOTES: Regional definitions appear on last page of this circular. Imports are reported on a trade year basis. All other data are reported using local marketing years.

**World Corn Trade**  
**October/September Year, Thousand Metric Tons**

	2008/09	2009/10	2010/11	2011/12	2012/13 Nov	2012/13 Dec
<b>TY Exports</b>						
Argentina	8,466	16,973	15,198	16,501	17,500	17,500
Brazil	7,178	8,623	11,583	12,674	21,000	21,000
Canada	366	184	1,657	494	1,000	1,500
EU-27	1,743	1,519	1,078	3,200	500	500
India	2,551	1,917	3,376	4,700	3,000	3,000
Paraguay	1,862	1,388	1,203	2,301	1,400	1,600
Russia	1,331	427	37	2,027	1,800	2,300
South Africa	2,111	1,586	2,839	1,831	2,300	2,500
Ukraine	5,497	5,072	5,008	15,157	12,500	12,500
Zambia	0	100	300	500	500	500
Others	5,110	5,479	4,364	5,311	3,190	3,140
<b>Subtotal</b>	36,215	43,268	46,643	64,696	64,690	66,040
<b>United States</b>	47,758	49,721	45,244	38,430	31,000	31,000
<b>World Total</b>	83,973	92,989	91,887	103,126	95,690	97,040
<b>TY Imports</b>						
Algeria	1,903	2,569	2,683	3,100	2,800	2,800
Brazil	1,092	699	287	937	800	800
China	47	1,296	979	5,231	2,000	2,000
Colombia	3,068	3,651	3,504	3,181	3,500	3,500
Costa Rica	586	626	663	700	750	750
Cuba	708	736	838	746	850	850
Dominican Republic	973	1,071	1,001	1,050	1,100	1,100
Egypt	5,031	5,832	5,803	7,100	5,500	5,500
EU-27	2,754	2,931	7,437	6,300	6,500	8,000
Guatemala	673	651	676	700	750	750
Indonesia	317	1,321	3,041	1,700	1,500	1,500
Iran	3,600	4,300	3,500	3,600	3,500	3,500
Israel	846	1,053	1,029	1,200	1,200	1,200
Japan	16,531	15,971	15,648	14,892	15,000	15,000
Korea, South	7,188	8,461	8,107	7,636	8,000	8,000
Malaysia	2,447	3,107	2,809	3,200	3,000	3,100
Mexico	7,764	8,298	8,252	11,200	9,000	9,000
Morocco	1,566	1,802	1,738	1,900	1,700	1,700
Peru	1,429	1,782	1,939	1,772	1,900	1,900
Saudi Arabia	1,482	1,872	1,933	2,000	2,100	2,100
Syria	1,784	2,024	1,659	1,300	1,400	1,400
Taiwan	4,532	4,521	4,134	4,400	4,300	4,300
Tunisia	646	866	677	800	900	900
Venezuela	1,336	2,198	1,251	2,500	2,000	2,000
Vietnam	1,250	1,600	1,000	1,500	1,100	1,100
Others	12,421	10,735	9,710	10,535	9,830	9,805
<b>Subtotal</b>	81,974	89,973	90,298	99,180	90,980	92,555
<b>Unaccounted</b>	1,662	2,779	905	3,181	2,210	1,985
<b>United States</b>	337	237	684	765	2,500	2,500
<b>World Total</b>	83,973	92,989	91,887	103,126	95,690	97,040

TY=Trade Year, see Endnotes.

**World Corn Production, Consumption, and Stocks**  
**Local Marketing Years, Thousand Metric Tons**

	2008/09	2009/10	2010/11	2011/12	2012/13 Nov	2012/13 Dec
<b>Production</b>						
Argentina	15,500	25,000	25,200	21,000	28,000	27,500
Brazil	51,000	56,100	57,400	73,000	70,000	70,000
Canada	10,592	9,561	12,043	11,359	11,600	13,060
China	165,914	163,974	177,245	192,780	200,000	208,000
Egypt	6,645	6,280	6,500	5,500	5,800	5,800
Ethiopia	4,398	3,900	4,895	5,400	5,400	5,400
EU-27	62,321	56,947	56,165	66,171	54,649	54,670
India	19,730	16,720	21,730	21,570	20,000	20,000
Indonesia	8,700	6,900	6,800	8,900	8,900	8,900
Mexico	24,226	20,374	21,058	18,680	20,700	20,700
Nigeria	7,970	8,950	8,800	9,250	9,410	9,410
Philippines	6,853	6,231	7,271	7,130	7,350	7,350
Russia	6,682	3,963	3,075	6,680	7,500	8,500
South Africa	12,567	13,420	10,924	12,417	13,500	13,500
Ukraine	11,447	10,486	11,919	22,838	21,000	20,500
Others	78,349	80,673	84,168	85,156	83,457	83,367
<b>Subtotal</b>	492,894	489,479	515,193	567,831	567,266	576,657
<b>United States</b>	307,142	332,549	316,165	313,918	272,432	272,432
<b>World Total</b>	800,036	822,028	831,358	881,749	839,698	849,089
<b>Total Consumption</b>						
Argentina	6,400	6,900	7,300	7,200	8,800	8,300
Brazil	45,500	47,000	49,500	52,500	55,000	55,000
Canada	11,687	11,626	11,753	11,666	11,400	12,000
China	153,000	165,000	180,000	188,000	201,000	209,000
Egypt	11,100	12,000	12,500	11,700	12,200	12,200
EU-27	61,600	59,300	62,900	67,300	63,000	64,500
India	17,000	15,100	18,100	16,900	17,300	17,300
Indonesia	8,900	8,800	9,800	10,500	10,700	10,700
Japan	16,700	16,300	15,700	14,900	15,000	15,000
Korea, South	7,894	8,382	8,214	7,815	8,100	8,100
Mexico	32,400	30,200	29,200	29,500	29,700	29,700
Nigeria	7,900	8,800	8,800	9,250	9,450	9,450
Philippines	7,300	6,500	7,200	7,400	7,400	7,400
South Africa	9,900	10,300	10,650	10,800	11,100	11,100
Ukraine	5,850	5,700	6,500	7,800	8,500	8,000
Others	119,662	124,135	127,364	131,734	134,140	134,390
<b>Subtotal</b>	524,809	543,226	564,562	598,763	599,346	608,071
<b>United States</b>	259,272	281,590	285,014	279,007	254,444	254,444
<b>World Total</b>	784,081	824,816	849,576	877,770	853,790	862,515
<b>Ending Stocks</b>						
Argentina	970	2,573	4,130	940	2,150	1,650
Brazil	12,084	9,989	10,276	10,576	10,376	10,376
Canada	1,833	1,738	1,278	1,350	1,050	1,410
China	51,183	51,302	49,415	59,335	60,135	60,135
EU-27	6,149	5,208	4,832	6,803	4,452	4,473
Korea, South	1,466	1,622	1,589	1,484	1,462	1,462
South Africa	4,113	5,169	3,418	3,060	2,868	2,985
Others	27,764	24,297	23,478	22,384	19,069	18,698
<b>Subtotal</b>	105,562	101,898	98,416	105,932	101,562	101,189
<b>United States</b>	42,504	43,380	28,644	25,107	16,424	16,424
<b>World Total</b>	148,066	145,278	127,060	131,039	117,986	117,613

## Regional Corn Imports, Production, Consumption, and Stocks

Thousand Metric Tons

	2008/09	2009/10	2010/11	2011/12	Nov 2012/13	Dec 2012/13
<b>TY Imports</b>						
North America	9,945	10,496	9,920	12,715	12,000	12,000
Central America	2,491	2,537	2,889	2,839	3,050	3,050
South America	8,238	9,469	8,336	9,775	9,465	9,415
European Union	2,754	2,931	7,437	6,300	6,500	8,000
Former Soviet Union - 12	393	259	324	295	315	340
Middle East	9,462	11,215	9,945	10,325	10,350	10,350
North Africa	9,574	11,725	11,265	13,400	11,450	11,450
Sub-Saharan Africa	3,037	1,776	1,537	2,189	1,850	1,850
East Asia	28,479	30,378	29,024	32,339	29,430	29,430
Southeast Asia	5,391	6,709	7,527	7,050	6,050	6,150
Caribbean	2,011	2,139	2,195	2,176	2,325	2,325
Others	536	576	583	542	695	695
<b>Total</b>	<b>82,311</b>	<b>90,210</b>	<b>90,982</b>	<b>99,945</b>	<b>93,480</b>	<b>95,055</b>
<b>Production</b>						
North America	341,960	362,484	349,266	343,957	304,732	306,192
South America	76,109	91,067	92,423	103,793	108,605	108,355
European Union	62,321	56,947	56,165	66,171	54,649	54,670
Other Europe	9,951	9,674	10,094	9,494	6,594	6,594
Former Soviet Union - 12	21,741	17,690	18,493	33,701	32,460	32,260
Middle East	6,748	6,305	6,039	5,968	6,793	6,783
North Africa	6,846	6,481	6,701	5,701	6,001	6,001
Sub-Saharan Africa	49,606	53,975	54,929	57,507	57,626	57,626
East Asia	167,580	165,679	178,947	194,593	201,576	209,926
South Asia	24,780	21,790	26,801	26,640	25,070	25,070
Central America	3,719	3,567	3,622	3,661	3,788	3,788
Southeast Asia	27,485	25,212	26,692	29,312	30,550	30,550
Others	1,190	1,157	1,186	1,251	1,254	1,274
<b>Total</b>	<b>800,036</b>	<b>822,028</b>	<b>831,358</b>	<b>881,749</b>	<b>839,698</b>	<b>849,089</b>
<b>Domestic Consumption</b>						
North America	303,359	323,416	325,967	320,173	295,544	296,144
South America	67,529	70,189	73,898	76,895	81,445	80,845
European Union	61,600	59,300	62,900	67,300	63,000	64,500
Other Europe	8,376	8,354	8,454	8,205	6,985	6,985
Former Soviet Union - 12	14,455	12,915	13,260	16,260	18,260	17,760
Middle East	16,005	16,885	16,885	16,985	17,735	17,710
North Africa	16,125	17,650	18,525	17,975	18,625	18,625
Sub-Saharan Africa	49,023	52,075	54,212	56,069	57,025	57,025
East Asia	184,015	196,111	209,870	217,045	230,005	238,355
South Asia	22,050	20,270	23,271	22,070	22,370	22,370
Southeast Asia	30,043	30,943	33,443	35,100	36,000	36,100
Central America	6,250	6,300	6,425	6,575	6,700	6,650
Others	3,235	3,225	3,385	3,320	3,540	3,515
<b>Total</b>	<b>782,065</b>	<b>817,633</b>	<b>850,495</b>	<b>863,972</b>	<b>857,234</b>	<b>866,584</b>
<b>Ending Stocks</b>						
North America	47,896	46,507	31,334	27,949	18,866	19,226
South America	15,426	15,613	16,554	12,911	14,264	13,541
European Union	6,149	5,208	4,832	6,803	4,452	4,473
Other Europe	1,198	1,372	1,359	600	510	479
Former Soviet Union - 12	2,086	1,536	1,888	2,150	2,082	1,850
Middle East	4,073	4,439	3,551	2,814	2,182	2,197
North Africa	2,200	2,391	2,156	2,880	1,896	1,896
Sub-Saharan Africa	7,821	8,909	7,954	8,268	7,067	7,184
East Asia	54,295	54,090	52,055	61,876	62,687	62,677
South Asia	1,498	992	1,078	843	538	538
Southeast Asia	4,443	3,376	3,498	3,244	2,619	2,714
Central America	723	534	550	453	602	616
Others	258	311	251	248	221	222
<b>Total</b>	<b>148,066</b>	<b>145,278</b>	<b>127,060</b>	<b>131,039</b>	<b>117,986</b>	<b>117,613</b>

NOTES: Regional definitions appear on last page of this circular. Imports are reported on a trade year basis. All other data are reported using local marketing years.

**World Barley Trade**  
**October/September Year, Thousand Metric Tons**

	2008/09	2009/10	2010/11	2011/12	2012/13 Nov	2012/13 Dec
<b>TY Exports</b>						
Argentina	871	549	1,531	3,631	4,000	4,000
Australia	3,278	3,846	4,088	5,819	3,800	3,800
Canada	1,618	1,203	1,052	1,338	1,300	1,300
China	17	13	9	4	10	10
Croatia	4	7	4	5	5	5
Egypt	7	14	5	10	10	10
EU-27	2,374	2,389	4,594	3,600	3,300	3,300
India	37	31	30	25	25	25
Kazakhstan	314	354	224	659	200	200
Kenya	1	2	5	5	5	5
Moldova	31	43	7	25	10	10
Russia	3,598	2,086	969	3,668	2,000	2,200
Serbia	11	22	9	10	5	5
Turkey	3	801	50	150	150	150
Ukraine	5,871	5,752	2,446	2,166	2,500	2,500
Others	10	24	1	2	0	0
<b>Subtotal</b>	<b>18,045</b>	<b>17,136</b>	<b>15,024</b>	<b>21,117</b>	<b>17,320</b>	<b>17,520</b>
<b>United States</b>	<b>158</b>	<b>152</b>	<b>181</b>	<b>179</b>	<b>200</b>	<b>200</b>
<b>World Total</b>	<b>18,203</b>	<b>17,288</b>	<b>15,205</b>	<b>21,296</b>	<b>17,520</b>	<b>17,720</b>
<b>TY Imports</b>						
Brazil	403	346	345	274	300	300
China	1,551	2,341	1,656	2,541	2,400	2,400
Colombia	211	237	251	301	250	250
EU-27	156	66	286	400	200	200
Iran	1,400	800	500	1,600	1,000	1,000
Israel	367	491	287	350	200	200
Japan	1,346	1,411	1,359	1,257	1,300	1,300
Jordan	514	432	544	700	500	600
Kuwait	252	283	317	250	250	250
Libya	296	582	179	200	200	200
Mexico	123	42	26	150	150	150
Morocco	263	248	222	600	700	700
Russia	39	13	411	500	500	500
Saudi Arabia	7,700	7,200	6,200	8,500	7,000	7,000
United Arab Emirates	131	299	330	400	300	300
Others	2,557	1,679	2,106	2,324	1,400	1,425
<b>Subtotal</b>	<b>17,309</b>	<b>16,470</b>	<b>15,019</b>	<b>20,347</b>	<b>16,650</b>	<b>16,775</b>
<b>Unaccounted</b>	<b>322</b>	<b>516</b>	<b>38</b>	<b>480</b>	<b>420</b>	<b>495</b>
<b>United States</b>	<b>572</b>	<b>302</b>	<b>148</b>	<b>469</b>	<b>450</b>	<b>450</b>
<b>World Total</b>	<b>18,203</b>	<b>17,288</b>	<b>15,205</b>	<b>21,296</b>	<b>17,520</b>	<b>17,720</b>

TY=Trade Year, see Endnotes.

**World Barley Production, Consumption, and Stocks**  
**Local Marketing Years, Thousand Metric Tons**

	2008/09	2009/10	2010/11	2011/12	2012/13 Nov	2012/13 Dec
<b>Production</b>						
Algeria	560	2,400	1,500	1,350	1,700	1,700
Argentina	2,110	1,356	2,950	4,500	5,700	5,700
Australia	7,996	7,865	7,995	8,349	7,000	7,000
Belarus	2,212	2,123	1,966	2,013	2,000	2,000
Canada	11,781	9,517	7,627	7,892	8,600	8,010
China	2,823	2,318	1,972	2,500	2,600	2,600
Ethiopia	1,484	1,569	1,525	1,592	1,580	1,580
EU-27	65,509	62,149	53,511	51,449	54,461	54,407
India	1,200	1,690	1,350	1,660	1,610	1,610
Iran	1,547	3,446	3,210	2,900	3,400	3,400
Kazakhstan	2,059	2,519	1,313	2,593	1,500	1,500
Morocco	1,272	3,800	2,570	2,340	1,100	1,100
Russia	23,148	17,881	8,350	16,935	14,000	14,000
Turkey	5,700	6,500	5,900	7,000	5,500	5,500
Ukraine	12,612	11,833	8,484	9,098	6,700	6,700
Others	7,773	8,859	8,544	8,690	8,559	8,511
<b>Subtotal</b>	149,786	145,825	118,767	130,861	126,010	125,318
<b>United States</b>	5,230	4,949	3,925	3,392	4,796	4,796
<b>World Total</b>	155,016	150,774	122,692	134,253	130,806	130,114
<b>Total Consumption</b>						
Algeria	1,100	1,350	1,500	1,700	1,800	1,800
Argentina	895	990	1,135	1,200	1,500	1,500
Australia	4,000	4,500	4,200	3,300	3,300	3,300
Belarus	2,200	2,200	2,000	2,100	2,200	2,200
Canada	9,065	8,504	7,506	6,903	7,300	6,800
China	4,200	4,400	4,150	4,700	4,800	4,800
EU-27	57,000	56,500	56,400	51,500	53,000	52,800
India	1,000	1,500	1,350	1,550	1,680	1,680
Iran	3,550	3,700	3,700	4,000	4,200	4,200
Japan	1,550	1,550	1,550	1,500	1,500	1,500
Morocco	1,700	2,900	3,050	3,100	2,100	2,100
Russia	17,100	16,650	9,500	14,300	12,900	12,400
Saudi Arabia	7,425	7,425	6,325	6,725	7,525	7,525
Turkey	5,700	5,900	6,000	6,750	5,800	5,800
Ukraine	5,900	5,600	6,000	6,300	4,800	4,800
Others	15,904	16,081	15,356	16,230	14,525	14,620
<b>Subtotal</b>	138,920	140,004	131,322	131,614	128,783	128,253
<b>United States</b>	5,127	4,604	4,537	4,193	4,571	4,571
<b>World Total</b>	144,047	144,608	135,859	135,807	133,354	132,824
<b>Ending Stocks</b>						
Algeria	184	1,247	1,336	1,634	1,634	1,634
Canada	2,843	2,583	1,541	1,247	1,248	1,182
EU-27	10,916	15,532	7,949	5,253	3,614	3,560
Iran	622	1,268	1,178	1,378	1,578	1,578
Russia	3,813	2,395	1,386	938	838	838
Saudi Arabia	2,203	2,078	1,253	3,028	2,503	2,503
Ukraine	1,055	1,067	794	1,172	902	902
Others	7,797	8,846	6,982	6,854	6,151	6,155
<b>Subtotal</b>	29,433	35,016	22,419	21,504	18,468	18,352
<b>United States</b>	1,932	2,515	1,945	1,306	1,748	1,748
<b>World Total</b>	31,365	37,531	24,364	22,810	20,216	20,100

## Regional Barley Imports, Production, Consumption, and Stocks

Thousand Metric Tons

	2008/09	2009/10	2010/11	2011/12	Nov 2012/13	Dec 2012/13
<b>TY Imports</b>						
North America	737	373	227	629	625	625
South America	810	772	905	847	785	810
European Union	156	66	286	400	200	200
Other Europe	82	158	242	250	155	155
Former Soviet Union - 12	269	195	704	805	755	755
Middle East	11,681	10,046	8,639	12,160	9,500	9,600
North Africa	973	1,215	959	1,650	1,200	1,200
Sub-Saharan Africa	125	59	74	75	45	45
East Asia	3,000	3,861	3,108	3,946	3,825	3,825
South Asia	48	10	8	35	5	5
Oceania	0	17	15	19	5	5
<b>Total</b>	<b>17,881</b>	<b>16,772</b>	<b>15,167</b>	<b>20,816</b>	<b>17,100</b>	<b>17,225</b>
<b>Production</b>						
North America	17,792	14,985	12,224	11,771	13,959	13,369
South America	3,156	2,443	3,869	5,535	6,885	6,837
European Union	65,509	62,149	53,511	51,449	54,461	54,407
Other Europe	1,543	1,406	1,309	1,330	1,294	1,294
Former Soviet Union - 12	41,651	35,973	21,675	32,273	25,690	25,690
Middle East	8,004	11,320	11,100	11,670	10,275	10,275
North Africa	2,347	7,324	4,572	4,435	3,595	3,595
Sub-Saharan Africa	1,801	1,933	1,865	2,049	2,020	2,020
East Asia	3,210	2,646	2,215	2,800	2,910	2,910
South Asia	1,607	2,330	1,957	2,192	2,317	2,317
Oceania	8,396	8,265	8,395	8,749	7,400	7,400
<b>Total</b>	<b>155,016</b>	<b>150,774</b>	<b>122,692</b>	<b>134,253</b>	<b>130,806</b>	<b>130,114</b>
<b>Domestic Consumption</b>						
North America	15,017	13,808	12,743	11,796	12,571	12,071
South America	2,703	2,933	2,937	3,045	3,445	3,440
European Union	57,000	56,500	56,400	51,500	53,000	52,800
Other Europe	1,630	1,552	1,537	1,567	1,440	1,440
Former Soviet Union - 12	28,744	28,090	20,672	26,310	22,925	22,425
Middle East	20,556	20,403	19,673	21,401	20,396	20,496
North Africa	3,987	5,847	5,845	6,125	5,175	5,175
Sub-Saharan Africa	1,935	1,963	1,960	1,990	1,907	1,907
East Asia	6,006	6,195	5,900	6,475	6,550	6,550
South Asia	1,438	2,163	1,967	2,117	2,392	2,392
Oceania	4,400	4,900	4,625	3,725	3,700	3,700
<b>Total</b>	<b>143,416</b>	<b>144,354</b>	<b>134,259</b>	<b>136,051</b>	<b>133,501</b>	<b>132,396</b>
<b>Ending Stocks</b>						
North America	5,107	5,295	3,686	2,673	3,129	3,063
South America	766	601	851	612	801	819
European Union	10,916	15,532	7,949	5,253	3,614	3,560
Other Europe	281	249	235	215	214	214
Former Soviet Union - 12	5,701	4,449	2,856	2,853	2,263	2,263
Middle East	4,389	4,837	3,962	6,163	5,383	5,392
North Africa	511	2,952	2,694	2,693	2,303	2,303
Sub-Saharan Africa	208	240	216	333	486	486
East Asia	940	1,239	681	948	1,123	1,123
South Asia	87	224	197	282	187	187
Oceania	2,459	1,913	1,037	785	713	690
<b>Total</b>	<b>31,365</b>	<b>37,531</b>	<b>24,364</b>	<b>22,810</b>	<b>20,216</b>	<b>20,100</b>

NOTES: Regional definitions appear on last page of this circular. Imports are reported on a trade year basis. All other data are reported using local marketing years.



**World Sorghum Trade**  
**October/September Year, Thousand Metric Tons**

	2008/09	2009/10	2010/11	2011/12	2012/13 Nov	2012/13 Dec
<b>TY Exports</b>						
Argentina	907	1,507	1,893	2,163	2,400	2,600
Australia	1,360	350	575	1,185	1,000	1,000
China	32	41	68	36	50	50
Ethiopia	0	0	75	75	75	75
India	54	124	31	125	25	25
Nigeria	50	50	60	60	70	70
South Africa	48	48	18	20	20	20
Others	47	118	77	90	60	60
<b>Subtotal</b>	2,498	2,238	2,797	3,754	3,700	3,900
<b>United States</b>	3,598	4,074	3,827	1,548	2,500	2,500
<b>World Total</b>	6,096	6,312	6,624	5,302	6,200	6,400
<b>TY Imports</b>						
Chile	404	568	729	539	600	600
China	14	83	4	84	50	50
Colombia	202	212	391	592	400	600
Ethiopia	140	125	35	30	50	50
EU-27	66	7	922	125	300	300
Japan	1,629	1,649	1,418	1,481	1,450	1,450
Mexico	2,496	2,527	2,381	1,369	2,200	2,200
Morocco	4	144	99	5	125	125
Sudan	300	400	200	200	400	400
Taiwan	72	71	97	75	75	75
Others	435	556	432	440	335	375
<b>Subtotal</b>	5,762	6,342	6,708	4,940	5,985	6,225
<b>Unaccounted</b>	331	-30	-86	359	215	175
<b>United States</b>	3	0	2	3	0	0
<b>World Total</b>	6,096	6,312	6,624	5,302	6,200	6,400

TY=Trade Year, see Endnotes.

**World Sorghum Production, Consumption, and Stocks**  
**Local Marketing Years, Thousand Metric Tons**

	2008/09	2009/10	2010/11	2011/12	2012/13 Nov	2012/13 Dec
<b>Production</b>						
Argentina	1,660	3,629	4,400	4,200	5,200	5,200
Australia	2,692	1,508	1,935	2,223	2,700	2,400
Brazil	2,004	1,854	2,314	2,205	2,800	2,800
Burkina	1,875	1,522	1,950	1,600	1,800	1,800
Chad	590	600	1,000	700	900	900
China	1,837	1,677	2,456	2,600	2,650	2,650
Egypt	900	900	900	900	900	900
Ethiopia	2,619	2,084	3,465	3,781	3,700	3,700
India	7,250	6,700	7,000	6,030	6,000	6,000
Mali	930	980	925	850	900	900
Mexico	7,067	6,250	7,385	6,425	6,400	6,400
Niger	1,214	739	1,300	700	1,000	1,000
Nigeria	11,000	6,600	6,750	6,850	6,900	6,900
Sudan	4,192	2,630	4,606	2,089	3,800	3,800
Tanzania	551	710	800	788	760	760
Others	6,320	6,154	6,510	6,646	6,679	6,679
<b>Subtotal</b>	<b>52,701</b>	<b>44,537</b>	<b>53,696</b>	<b>48,587</b>	<b>53,089</b>	<b>52,789</b>
<b>United States</b>	<b>11,998</b>	<b>9,728</b>	<b>8,779</b>	<b>5,447</b>	<b>6,507</b>	<b>6,507</b>
<b>World Total</b>	<b>64,699</b>	<b>54,265</b>	<b>62,475</b>	<b>54,034</b>	<b>59,596</b>	<b>59,296</b>
<b>Total Consumption</b>						
Argentina	1,100	1,900	2,250	1,950	2,450	2,450
Australia	1,805	1,205	1,405	1,105	1,805	1,405
Brazil	1,875	1,875	2,275	2,275	2,700	2,700
Burkina	1,700	1,695	1,800	1,600	1,800	1,800
Chad	650	625	950	750	900	900
China	2,000	1,900	2,200	2,600	2,900	2,900
Egypt	950	900	900	950	950	950
Ethiopia	2,700	2,400	3,200	3,700	3,700	3,700
India	7,200	6,600	6,800	6,100	6,000	6,000
Japan	1,600	1,650	1,460	1,475	1,450	1,450
Mali	930	980	925	850	900	900
Mexico	8,600	9,700	9,400	8,100	8,700	8,700
Niger	1,200	900	1,250	850	1,050	1,050
Nigeria	10,950	6,550	6,700	6,800	6,850	6,850
Sudan	4,500	3,400	4,500	2,650	4,100	4,100
Others	8,379	8,208	9,852	9,025	9,167	9,417
<b>Subtotal</b>	<b>55,943</b>	<b>50,791</b>	<b>55,884</b>	<b>51,701</b>	<b>55,977</b>	<b>55,587</b>
<b>United States</b>	<b>8,319</b>	<b>5,859</b>	<b>5,278</b>	<b>3,954</b>	<b>3,938</b>	<b>3,938</b>
<b>World Total</b>	<b>64,262</b>	<b>56,650</b>	<b>61,162</b>	<b>55,655</b>	<b>59,915</b>	<b>59,525</b>
<b>Ending Stocks</b>						
Argentina	194	152	600	250	400	400
Australia	678	681	361	279	194	174
Brazil	188	171	211	146	251	251
China	456	275	467	515	265	265
Ethiopia	238	47	272	308	283	283
Mexico	1,336	413	779	473	304	373
Sudan	684	309	610	229	324	324
Others	1,407	1,090	1,502	1,095	945	967
<b>Subtotal</b>	<b>5,181</b>	<b>3,138</b>	<b>4,802</b>	<b>3,295</b>	<b>2,966</b>	<b>3,037</b>
<b>United States</b>	<b>1,390</b>	<b>1,048</b>	<b>697</b>	<b>583</b>	<b>612</b>	<b>612</b>
<b>World Total</b>	<b>6,571</b>	<b>4,186</b>	<b>5,499</b>	<b>3,878</b>	<b>3,578</b>	<b>3,649</b>

## Regional Sorghum Imports, Production, Consumption, and Stocks

Thousand Metric Tons

	2008/09	2009/10	2010/11	2011/12	Nov 2012/13	Dec 2012/13
<b>TY Imports</b>						
North America	2,499	2,527	2,383	1,372	2,200	2,200
South America	665	848	1,214	1,166	1,060	1,260
European Union	66	7	922	125	300	300
Other Europe	0	17	0	5	5	5
Middle East	81	48	120	30	30	30
North Africa	45	166	120	40	150	150
Sub-Saharan Africa	672	872	390	545	640	680
East Asia	1,719	1,806	1,523	1,645	1,580	1,580
Southeast Asia	14	16	17	10	15	15
Others	4	35	21	5	5	5
<b>Total</b>	<b>5,765</b>	<b>6,342</b>	<b>6,710</b>	<b>4,943</b>	<b>5,985</b>	<b>6,225</b>
<b>Production</b>						
North America	19,065	15,978	16,164	11,872	12,907	12,907
Central America	298	326	329	329	329	329
Caribbean	128	128	128	128	128	128
South America	4,719	6,153	7,351	7,097	8,682	8,682
European Union	517	621	629	673	560	560
Middle East	654	581	807	640	640	640
North Africa	915	915	915	915	915	915
Sub-Saharan Africa	26,404	19,459	24,542	21,312	23,870	23,870
East Asia	1,857	1,697	2,476	2,620	2,670	2,670
South Asia	7,395	6,845	7,145	6,175	6,145	6,145
Southeast Asia	55	54	54	50	50	50
Oceania	2,692	1,508	1,935	2,223	2,700	2,400
Others	0	0	0	0	0	0
<b>Total</b>	<b>64,699</b>	<b>54,265</b>	<b>62,475</b>	<b>54,034</b>	<b>59,596</b>	<b>59,296</b>
<b>Domestic Consumption</b>						
North America	16,919	15,559	14,678	12,054	12,638	12,638
Central America	315	325	325	325	320	320
Caribbean	128	128	128	128	128	128
South America	4,766	5,350	6,274	6,122	6,867	7,067
European Union	905	630	1,550	760	860	860
Middle East	749	669	914	675	675	675
North Africa	965	1,012	1,066	970	1,090	1,090
Sub-Saharan Africa	26,795	20,982	24,010	22,105	24,317	24,367
East Asia	3,699	3,643	3,779	4,180	4,445	4,445
South Asia	7,349	6,780	6,955	6,250	6,150	6,150
Southeast Asia	63	47	61	55	60	60
Oceania	1,805	1,205	1,405	1,105	1,805	1,405
Others	0	17	0	5	5	5
<b>Total</b>	<b>64,458</b>	<b>56,347</b>	<b>61,145</b>	<b>54,734</b>	<b>59,360</b>	<b>59,210</b>
<b>Ending Stocks</b>						
North America	2,726	1,461	1,476	1,056	916	985
Central America	27	28	34	33	37	37
South America	491	393	867	454	697	714
European Union	34	24	20	15	10	10
Middle East	62	22	35	30	25	25
North Africa	29	43	57	37	7	7
Sub-Saharan Africa	1,760	980	1,769	1,240	1,228	1,233
East Asia	578	397	549	598	353	353
South Asia	181	154	327	132	107	107
Oceania	678	681	361	279	194	174
Others	5	3	4	4	4	4
<b>Total</b>	<b>6,571</b>	<b>4,186</b>	<b>5,499</b>	<b>3,878</b>	<b>3,578</b>	<b>3,649</b>

NOTES: Regional definitions appear on last page of this circular. Imports are reported on a trade year basis. All other data are reported using local marketing years.

**World Oats Trade**  
**October/September Year, Thousand Metric Tons**

	2008/09	2009/10	2010/11	2011/12	2012/13 Nov	2012/13 Dec
<b>TY Exports</b>						
Argentina	5	1	6	5	5	5
Australia	161	211	211	174	150	150
Brazil	9	4	9	5	5	5
Canada	1,792	1,539	1,497	1,764	1,700	1,700
Chile	31	37	129	100	100	100
EU-27	103	216	113	170	100	100
Russia	2	4	1	15	5	5
Others	6	20	4	7	5	5
<b>Subtotal</b>	2,109	2,032	1,970	2,240	2,070	2,070
<b>United States</b>	38	38	37	27	40	40
<b>World Total</b>	2,147	2,070	2,007	2,267	2,110	2,110
<b>TY Imports</b>						
Albania	0	0	5	0	0	0
Algeria	0	1	0	0	0	0
Bosnia and Herzegovina	2	3	5	5	5	5
Canada	14	21	18	11	20	20
China	39	57	58	68	50	50
Colombia	2	2	2	5	5	5
Ecuador	14	11	11	10	10	10
EU-27	4	2	6	5	5	5
Japan	46	56	64	54	60	60
Mexico	82	46	103	135	75	75
Norway	8	34	10	25	15	15
South Africa	33	21	25	25	25	25
Switzerland	52	49	49	56	50	50
Turkey	6	0	5	5	5	5
Uruguay	11	4	11	5	5	5
Others	5	3	8	7	0	0
<b>Subtotal</b>	318	310	380	416	330	330
<b>Unaccounted</b>	42	153	159	122	180	180
<b>United States</b>	1,787	1,607	1,468	1,729	1,600	1,600
<b>World Total</b>	2,147	2,070	2,007	2,267	2,110	2,110

TY=Trade Year, see Endnotes.

**World Oats Production, Consumption, and Stocks**  
**Local Marketing Years, Thousand Metric Tons**

	2008/09	2009/10	2010/11	2011/12	2012/13 Nov	2012/13 Dec
<b>Production</b>						
Algeria	80	140	140	140	140	140
Argentina	291	182	660	345	400	400
Australia	1,160	1,162	1,128	1,274	1,240	1,050
Belarus	605	552	442	448	600	600
Brazil	239	253	379	370	370	370
Canada	4,273	2,906	2,451	3,158	2,950	2,680
Chile	344	381	564	505	560	560
China	530	580	525	600	580	580
EU-27	8,935	8,579	7,452	7,860	7,611	7,581
Kazakhstan	138	204	134	258	200	200
Mexico	148	130	111	115	115	115
Norway	328	277	299	220	220	220
Russia	5,835	5,401	3,218	5,334	4,000	4,000
Turkey	196	218	204	210	210	210
Ukraine	944	731	458	550	550	550
Others	457	475	475	475	440	440
<b>Subtotal</b>	24,503	22,171	18,640	21,862	20,186	19,696
<b>United States</b>	1,294	1,351	1,178	779	929	929
<b>World Total</b>	25,797	23,522	19,818	22,641	21,115	20,625
<b>Total Consumption</b>						
Algeria	80	140	141	140	140	140
Argentina	300	200	650	350	400	400
Australia	1,035	975	900	1,100	1,100	900
Belarus	600	575	475	450	575	575
Brazil	225	250	370	360	375	375
Canada	1,766	1,748	1,521	1,374	1,350	1,275
Chile	325	350	450	400	450	450
China	575	625	625	625	625	625
EU-27	8,500	8,100	7,750	7,600	7,600	7,600
Kazakhstan	135	210	130	225	225	225
Mexico	210	215	185	245	190	190
Norway	320	320	295	245	245	245
Russia	5,600	5,500	3,450	5,000	4,300	4,300
Turkey	210	210	210	210	210	210
Ukraine	925	725	475	550	550	550
Others	608	622	646	635	603	603
<b>Subtotal</b>	21,438	20,834	18,270	19,766	19,085	18,810
<b>United States</b>	2,968	3,011	2,789	2,549	2,594	2,594
<b>World Total</b>	24,406	23,845	21,059	22,315	21,679	21,404
<b>Ending Stocks</b>						
Argentina	89	70	74	69	64	64
Australia	147	126	146	145	127	145
Belarus	74	51	18	16	41	41
Canada	1,527	1,175	753	812	737	537
China	114	126	84	127	114	132
EU-27	972	1,224	819	916	828	802
Russia	499	397	167	486	181	181
Others	203	188	239	239	197	201
<b>Subtotal</b>	3,625	3,357	2,300	2,810	2,289	2,103
<b>United States</b>	1,221	1,166	982	798	726	726
<b>World Total</b>	4,846	4,523	3,282	3,608	3,015	2,829

## Regional Oats Imports, Production, Consumption, and Stocks

Thousand Metric Tons

	2008/09	2009/10	2010/11	2011/12	Nov 2012/13	Dec 2012/13
<b>TY Imports</b>						
North America	1,883	1,674	1,589	1,875	1,695	1,695
South America	32	19	24	25	20	20
European Union	4	2	6	5	5	5
Other Europe	62	87	71	88	70	70
Former Soviet Union - 12	0	0	6	0	0	0
Middle East	6	0	5	5	5	5
North Africa	0	1	0	0	0	0
Sub-Saharan Africa	33	21	25	25	25	25
East Asia	85	113	122	122	110	110
Oceania	0	0	0	0	0	0
<b>Total</b>	<b>2,105</b>	<b>1,917</b>	<b>1,848</b>	<b>2,145</b>	<b>1,930</b>	<b>1,930</b>
<b>Production</b>						
North America	5,715	4,387	3,740	4,052	3,994	3,724
South America	897	857	1,644	1,261	1,370	1,370
European Union	8,935	8,579	7,452	7,860	7,611	7,581
Other Europe	605	554	576	497	462	462
Former Soviet Union - 12	7,527	6,893	4,257	6,595	5,356	5,356
Middle East	196	218	204	210	210	210
North Africa	110	170	170	170	170	170
Sub-Saharan Africa	45	45	45	45	45	45
East Asia	532	582	527	602	582	582
Oceania	1,235	1,237	1,203	1,349	1,315	1,125
<b>Total</b>	<b>25,797</b>	<b>23,522</b>	<b>19,818</b>	<b>22,641</b>	<b>21,115</b>	<b>20,625</b>
<b>Domestic Consumption</b>						
North America	4,944	4,974	4,495	4,168	4,134	4,059
South America	896	857	1,538	1,171	1,285	1,285
European Union	8,500	8,100	7,750	7,600	7,600	7,600
Other Europe	647	655	633	579	542	542
Former Soviet Union - 12	7,265	7,015	4,535	6,230	5,656	5,656
Middle East	210	210	210	210	210	210
North Africa	110	170	171	170	170	170
Sub-Saharan Africa	75	65	70	70	70	70
East Asia	625	680	685	685	690	690
Oceania	1,110	1,050	975	1,175	1,175	975
<b>Total</b>	<b>24,382</b>	<b>23,776</b>	<b>21,062</b>	<b>22,058</b>	<b>21,532</b>	<b>21,257</b>
<b>Ending Stocks</b>						
North America	2,756	2,348	1,740	1,617	1,468	1,270
South America	113	95	150	114	109	109
European Union	972	1,224	819	916	828	802
Other Europe	58	47	63	65	53	55
Former Soviet Union - 12	658	517	235	578	268	268
Middle East	2	10	9	14	19	19
North Africa	1	1	1	1	1	1
Sub-Saharan Africa	23	24	24	24	24	24
East Asia	116	131	95	134	118	136
Oceania	147	126	146	145	127	145
<b>Total</b>	<b>4,846</b>	<b>4,523</b>	<b>3,282</b>	<b>3,608</b>	<b>3,015</b>	<b>2,829</b>

NOTES: Regional definitions appear on last page of this circular. Imports are reported on a trade year basis. All other data are reported using local marketing years.

**World Rye Trade**  
**October/September Year, Thousand Metric Tons**

	2008/09	2009/10	2010/11	2011/12	2012/13 Nov	2012/13 Dec
<b>TY Exports</b>						
Belarus	50	25	150	25	100	100
Canada	76	142	221	159	150	175
EU-27	114	136	71	65	100	100
Russia	14	32	21	284	50	50
Ukraine	6	93	2	5	5	5
Others	0	0	3	0	0	0
<b>Subtotal</b>	260	428	468	538	405	430
<b>United States</b>	6	4	3	8	5	5
<b>World Total</b>	266	432	471	546	410	435
<b>TY Imports</b>						
Albania	0	0	0	0	0	0
EU-27	8	6	36	275	50	50
Israel	11	9	19	10	10	10
Japan	57	103	101	46	100	100
Korea, South	7	7	11	5	5	5
Norway	11	14	12	10	10	10
Switzerland	4	6	2	5	5	5
Others	11	4	151	5	0	0
<b>Subtotal</b>	109	149	332	356	180	180
<b>Unaccounted</b>	49	154	-9	16	80	80
<b>United States</b>	108	129	148	174	150	175
<b>World Total</b>	266	432	471	546	410	435

TY=Trade Year, see Endnotes.

**World Rye Production, Consumption, and Stocks**  
**Local Marketing Years, Thousand Metric Tons**

	2008/09	2009/10	2010/11	2011/12	2012/13 Nov	2012/13 Dec
<b>Production</b>						
Belarus	1,492	1,227	735	804	1,500	1,500
Canada	316	280	237	241	315	340
EU-27	9,262	9,952	7,573	6,919	8,413	8,392
Kazakhstan	40	75	42	28	50	50
Russia	4,505	4,333	1,642	2,969	2,500	2,500
Turkey	247	343	366	350	350	350
Ukraine	1,051	954	464	550	650	650
Others	205	182	173	160	155	155
<b>Subtotal</b>	17,118	17,346	11,232	12,021	13,933	13,937
<b>United States</b>	203	178	189	161	176	176
<b>World Total</b>	17,321	17,524	11,421	12,182	14,109	14,113
<b>Total Consumption</b>						
Argentina	55	55	40	45	40	40
Belarus	1,400	1,300	650	700	1,300	1,300
Canada	152	140	134	102	125	135
EU-27	8,750	9,550	8,200	7,300	8,600	8,600
Japan	65	90	105	55	95	95
Kazakhstan	40	75	40	30	50	50
Norway	59	40	45	26	26	26
Russia	4,400	4,325	1,850	2,850	2,450	2,450
Turkey	275	340	350	350	350	350
Ukraine	800	800	650	600	600	600
Others	127	124	129	120	119	119
<b>Subtotal</b>	16,181	16,909	12,228	12,154	13,845	13,854
<b>United States</b>	292	273	330	317	329	353
<b>World Total</b>	16,473	17,182	12,558	12,471	14,174	14,207
<b>Ending Stocks</b>						
Belarus	242	144	79	158	258	258
Canada	123	139	51	24	60	54
EU-27	1,424	1,727	1,013	862	626	604
Japan	5	18	14	5	10	10
Russia	312	308	250	131	106	106
Turkey	14	17	33	38	38	38
Ukraine	313	411	189	134	179	179
Others	7	7	9	6	6	6
<b>Subtotal</b>	2,440	2,771	1,638	1,358	1,283	1,255
<b>United States</b>	13	24	20	11	18	20
<b>World Total</b>	2,453	2,795	1,658	1,369	1,301	1,275



## Regional Rye Imports, Production, Consumption, and Stocks

Thousand Metric Tons

	2008/09	2009/10	2010/11	2011/12	Nov 2012/13	Dec 2012/13
<b>TY Imports</b>						
North America	108	129	148	174	150	175
South America	0	0	0	0	0	0
European Union	8	6	36	275	50	50
Other Europe	18	22	15	15	15	15
Former Soviet Union - 12	2	2	150	0	0	0
Middle East	17	9	19	15	10	10
Sub-Saharan Africa	0	0	0	0	0	0
East Asia	64	110	112	51	105	105
Oceania	0	0	0	0	0	0
<b>Total</b>	<b>217</b>	<b>278</b>	<b>480</b>	<b>530</b>	<b>330</b>	<b>355</b>
<b>Production</b>						
North America	519	458	426	402	491	516
South America	63	61	45	50	45	45
European Union	9,262	9,952	7,573	6,919	8,413	8,392
Other Europe	119	98	105	87	87	87
Former Soviet Union - 12	7,088	6,589	2,883	4,351	4,700	4,700
Middle East	247	343	366	350	350	350
Sub-Saharan Africa	3	3	3	3	3	3
East Asia	0	0	0	0	0	0
Oceania	20	20	20	20	20	20
<b>Total</b>	<b>17,321</b>	<b>17,524</b>	<b>11,421</b>	<b>12,182</b>	<b>14,109</b>	<b>14,113</b>
<b>Domestic Consumption</b>						
North America	444	413	464	419	454	488
South America	63	61	45	50	45	45
European Union	8,750	9,550	8,200	7,300	8,600	8,600
Other Europe	137	119	119	103	102	102
Former Soviet Union - 12	6,640	6,500	3,190	4,180	4,400	4,400
Middle East	286	349	369	360	360	360
Sub-Saharan Africa	3	3	3	3	3	3
East Asia	72	97	116	60	100	100
Oceania	20	20	17	20	20	20
<b>Total</b>	<b>16,415</b>	<b>17,112</b>	<b>12,523</b>	<b>12,495</b>	<b>14,084</b>	<b>14,118</b>
<b>Ending Stocks</b>						
North America	136	163	71	35	78	74
South America	0	0	0	0	0	0
European Union	1,424	1,727	1,013	862	626	604
Other Europe	1	1	1	0	0	0
Former Soviet Union - 12	873	869	526	429	549	549
Middle East	14	17	33	38	38	38
Sub-Saharan Africa	0	0	0	0	0	0
East Asia	5	18	14	5	10	10
Oceania	0	0	0	0	0	0
<b>Total</b>	<b>2,453</b>	<b>2,795</b>	<b>1,658</b>	<b>1,369</b>	<b>1,301</b>	<b>1,275</b>

NOTES: Regional definitions appear on last page of this circular. Imports are reported on a trade year basis. All other data are reported using local marketing years.



# HISTORICAL DATA SERIES FOR SELECTED REGIONS AND COUNTRIES

---

## CONTENTS

European Union: Grain Supply and Demand.....	35
China: Grain Supply and Demand.....	36
Other Europe: Grain Supply and Demand .....	37
Former Soviet Union: Grain Supply and Demand .....	38
Wheat Supply and Disappearance: Selected Exporters .....	42
Corn Supply and Disappearance: Selected Exporters .....	44
Barley Supply and Disappearance: Selected Exporters.....	46
Sorghum Supply and Disappearance: Selected Exporters.....	47
U.S. Grains: Supply and Distribution.....	48
Total Wheat and Coarse Grains: Supply and Demand.....	49
World Wheat and Coarse Grains: Supply and Demand .....	50
World Corn and Barley: Supply and Demand .....	51
World Rice: Supply and Demand.....	52

**European Union: Grain Supply and Demand**

**Wheat and Coarse Grains Millions of Metric Tons/Hectares**

	<b>Area Harvested</b>	<b>Yield</b>	<b>Production</b>	<b>Imports</b>	<b>Exports</b>	<b>Feed Dom. Consumpti</b>	<b>Domestic Consumpti</b>	<b>Ending Stocks</b>
<b>Wheat</b>								
2001/02	25.9	4.8	123.4	8.7	12.8	56.5	118.5	18.3
2002/03	26.4	5.0	132.6	10.7	18.1	60.0	125.0	18.5
2003/04	24.3	4.5	110.6	7.4	9.8	52.4	115.1	11.5
2004/05	26.0	5.7	146.9	7.1	14.7	59.2	123.2	27.5
2005/06	25.8	5.1	132.4	6.8	15.7	63.0	127.5	23.4
2006/07	24.5	5.1	124.9	5.2	13.8	60.2	125.5	14.2
2007/08	24.7	4.9	120.1	6.9	12.3	52.4	116.5	12.4
2008/09	26.7	5.7	151.1	7.7	25.4	60.5	127.0	18.9
2009/10	25.8	5.4	138.8	5.5	22.1	57.5	125.0	16.2
2010/11	25.9	5.3	136.0	4.7	22.9	52.5	122.3	11.7
2011/12	25.7	5.3	137.2	7.4	16.6	58.0	127.5	12.3
2012/13	25.5	5.2	131.7	6.0	18.0	52.5	122.0	10.0
<b>Coarse Grains</b>								
2001/02	33.7	4.5	150.5	3.9	6.7	108.1	143.8	22.4
2002/03	32.8	4.5	148.4	4.4	7.6	109.5	145.0	22.6
2003/04	32.7	4.0	131.8	8.2	4.2	109.7	145.3	13.1
2004/05	33.4	5.0	166.7	3.0	4.9	116.6	152.6	25.3
2005/06	32.7	4.5	146.8	2.8	4.4	110.0	148.1	22.4
2006/07	32.0	4.3	137.9	8.1	4.7	110.9	148.4	15.3
2007/08	32.2	4.2	136.6	20.3	4.6	119.6	154.9	12.7
2008/09	33.6	4.8	162.1	3.4	5.6	114.0	151.9	20.8
2009/10	32.5	4.8	155.0	3.0	3.0	112.6	150.1	25.9
2010/11	29.8	4.7	140.5	8.6	6.2	114.8	152.4	16.3
2011/12	29.9	4.9	147.4	7.1	6.5	111.7	149.4	15.0
2012/13	30.6	4.6	140.2	8.6	4.2	111.5	149.5	10.1
<b>Wheat and Coarse Grains</b>								
2001/02	59.6	4.6	273.9	12.7	19.4	164.6	262.3	40.7
2002/03	59.2	4.7	281.0	15.0	25.7	169.5	270.0	41.1
2003/04	57.0	4.2	242.4	15.6	14.0	162.1	260.4	24.7
2004/05	59.4	5.3	313.6	10.1	19.6	175.8	275.9	52.8
2005/06	58.5	4.8	279.1	9.6	20.1	173.0	275.6	45.8
2006/07	56.4	4.7	262.8	13.3	18.5	171.1	273.9	29.5
2007/08	56.9	4.5	256.7	27.2	16.9	172.0	271.4	25.2
2008/09	60.2	5.2	313.2	11.2	30.9	174.5	278.9	39.8
2009/10	58.3	5.0	293.9	8.6	25.1	170.1	275.1	42.0
2010/11	55.6	5.0	276.5	13.3	29.1	167.3	274.7	28.1
2011/12	55.6	5.1	284.7	14.5	23.1	169.7	276.9	27.3
2012/13	56.1	4.8	271.9	14.6	22.2	164.0	271.5	20.1

**China: Grain Supply and Demand**

**Wheat and Coarse Grains Millions of Metric Tons/Hectares**

	<b>Area Harvested</b>	<b>Yield</b>	<b>Production</b>	<b>Imports</b>	<b>Exports</b>	<b>Feed Dom. Consumpti</b>	<b>Domestic Consumpti</b>	<b>Ending Stocks</b>
<b>Wheat</b>								
2001/02	24.6	3.8	93.9	1.1	1.5	9.0	108.7	76.6
2002/03	23.9	3.8	90.3	0.4	1.7	6.5	105.2	60.4
2003/04	22.0	3.9	86.5	3.7	2.8	6.0	104.5	43.3
2004/05	21.6	4.3	92.0	6.7	1.2	4.0	102.0	38.8
2005/06	22.8	4.3	97.4	1.1	1.4	3.5	101.5	34.5
2006/07	23.6	4.6	108.5	0.4	2.8	4.0	102.0	38.6
2007/08	23.7	4.6	109.3	0.0	2.8	8.0	106.0	39.1
2008/09	23.6	4.8	112.5	0.5	0.7	8.0	105.5	45.8
2009/10	24.3	4.7	115.1	1.4	0.9	10.0	107.0	54.4
2010/11	24.3	4.7	115.2	0.9	0.9	13.0	110.5	59.1
2011/12	24.3	4.8	117.4	2.9	1.0	24.0	122.5	55.9
2012/13	24.1	5.0	120.6	3.0	1.0	23.0	123.0	55.5
<b>Coarse Grains</b>								
2001/02	27.3	4.5	122.4	2.0	8.6	96.3	133.0	85.6
2002/03	27.8	4.7	130.6	1.8	15.3	98.4	136.3	66.5
2003/04	26.8	4.6	124.0	1.5	7.7	99.1	138.3	45.9
2004/05	28.0	4.9	138.3	2.1	7.6	100.3	141.1	37.6
2005/06	28.8	5.1	147.8	2.3	3.8	103.5	147.1	36.8
2006/07	30.9	5.1	159.1	1.2	5.5	104.9	153.6	38.0
2007/08	31.9	5.0	159.2	1.2	0.9	106.7	158.0	39.4
2008/09	32.2	5.4	172.4	1.7	0.2	108.7	161.1	52.2
2009/10	33.4	5.1	169.8	3.8	0.2	118.7	173.2	52.4
2010/11	34.6	5.3	183.4	2.7	0.2	128.8	188.2	50.1
2011/12	35.7	5.6	199.7	7.9	0.1	132.0	197.1	60.5
2012/13	37.2	5.8	215.0	4.5	0.3	146.0	218.5	61.2
<b>Wheat and Coarse Grains</b>								
2001/02	52.0	4.2	216.3	3.1	10.1	105.3	241.7	162.2
2002/03	51.7	4.3	220.9	2.2	17.1	104.9	241.5	126.8
2003/04	48.8	4.3	210.5	5.3	10.5	105.1	242.8	89.2
2004/05	49.6	4.6	230.2	8.8	8.8	104.3	243.1	76.4
2005/06	51.6	4.7	245.2	3.4	5.2	107.0	248.6	71.3
2006/07	54.5	4.9	267.6	1.5	8.2	108.9	255.6	76.6
2007/08	55.6	4.8	268.5	1.2	3.7	114.7	264.0	78.5
2008/09	55.8	5.1	284.9	2.1	0.9	116.7	266.6	98.0
2009/10	57.6	4.9	284.9	5.2	1.1	128.7	280.2	106.8
2010/11	58.8	5.1	298.6	3.6	1.1	141.8	298.7	109.2
2011/12	60.0	5.3	317.1	10.9	1.1	156.0	319.6	116.4
2012/13	61.3	5.5	335.6	7.5	1.3	169.0	341.5	116.8

**Other Europe: Grain Supply and Demand**

**Wheat and Coarse Grains Millions of Metric Tons/Hectares**

	<b>Area Harvested</b>	<b>Yield</b>	<b>Production</b>	<b>Imports</b>	<b>Exports</b>	<b>Feed Dom. Consumpti</b>	<b>Domestic Consumpti</b>	<b>Ending Stocks</b>
<b>Wheat</b>								
2001/02	1.4	3.4	4.9	1.8	0.6	0.9	5.9	1.5
2002/03	1.4	3.5	4.9	1.4	0.6	0.9	5.6	1.5
2003/04	1.2	3.0	3.7	1.5	0.1	0.6	5.3	1.2
2004/05	1.3	4.0	5.4	1.5	0.3	0.9	5.8	2.0
2005/06	1.1	3.7	4.2	1.5	0.2	0.8	5.7	1.8
2006/07	1.2	3.6	4.3	1.5	0.6	0.7	5.3	1.8
2007/08	1.2	3.7	4.4	1.9	0.8	0.9	5.5	1.8
2008/09	1.1	4.2	4.7	1.7	0.5	1.0	5.6	2.1
2009/10	1.2	3.8	4.6	1.7	0.8	0.9	5.5	2.1
2010/11	1.1	3.7	3.9	1.7	0.8	0.8	5.4	1.5
2011/12	1.1	4.0	4.4	1.9	0.6	0.9	5.6	1.5
2012/13	1.1	3.8	4.2	1.8	0.8	0.9	5.5	1.2
<b>Coarse Grains</b>								
2001/02	2.7	4.1	10.9	0.8	0.2	9.8	11.1	1.4
2002/03	2.7	4.4	11.7	0.6	0.6	9.9	11.4	1.8
2003/04	2.7	3.4	9.0	0.8	0.1	9.4	10.6	1.0
2004/05	2.7	4.8	12.7	0.6	0.6	10.6	12.0	1.6
2005/06	2.6	4.8	12.6	0.7	1.4	10.6	12.0	1.5
2006/07	2.5	4.6	11.5	0.9	0.9	10.2	11.5	1.5
2007/08	2.6	3.6	9.3	1.0	0.1	9.0	10.3	1.4
2008/09	2.6	4.6	12.3	0.6	1.9	9.5	10.8	1.5
2009/10	2.4	4.8	11.8	0.8	1.7	9.3	10.8	1.7
2010/11	2.5	4.8	12.1	0.8	2.2	9.3	10.8	1.7
2011/12	2.5	4.5	11.5	0.8	2.5	9.0	10.5	0.9
2012/13	2.5	3.4	8.5	0.8	0.3	7.8	9.1	0.7
<b>Wheat and Coarse Grains</b>								
2001/02	4.1	3.9	15.8	2.6	0.8	10.7	17.0	2.9
2002/03	4.1	4.1	16.6	2.0	1.2	10.7	17.0	3.3
2003/04	3.9	3.3	12.7	2.3	0.2	9.9	16.0	2.3
2004/05	4.0	4.5	18.1	2.1	0.9	11.5	17.9	3.7
2005/06	3.8	4.4	16.8	2.1	1.6	11.5	17.7	3.3
2006/07	3.7	4.3	15.8	2.4	1.5	10.9	16.8	3.3
2007/08	3.8	3.6	13.7	2.9	0.9	9.9	15.8	3.2
2008/09	3.8	4.5	17.0	2.3	2.4	10.5	16.4	3.6
2009/10	3.7	4.5	16.4	2.4	2.5	10.2	16.2	3.8
2010/11	3.6	4.5	16.0	2.5	3.0	10.1	16.2	3.1
2011/12	3.6	4.4	15.8	2.8	3.2	9.9	16.1	2.4
2012/13	3.6	3.5	12.7	2.6	1.1	8.7	14.6	2.0

**Former Soviet Union: Grain Supply and Demand**

**Wheat and Coarse Grains Millions of Metric Tons/Hectares**

	<b>Area Harvested</b>	<b>Yield</b>	<b>Production</b>	<b>Imports</b>	<b>Exports</b>	<b>Feed Dom. Consumpti</b>	<b>Domestic Consumpti</b>	<b>Ending Stocks</b>
<b>Wheat</b>								
2006/07	45.2	1.9	84.7	6.0	22.6	21.6	72.5	13.0
2007/08	46.5	2.0	92.4	6.0	22.0	23.9	75.3	14.1
2008/09	51.1	2.3	115.5	6.6	38.2	24.5	76.1	21.9
2009/10	53.0	2.2	114.0	5.4	37.2	26.1	78.2	25.9
2010/11	46.9	1.7	81.1	5.7	13.9	23.8	75.0	23.8
2011/12	50.0	2.3	114.8	8.0	39.7	27.7	79.8	27.1
2012/13	45.5	1.7	77.8	7.1	23.6	21.3	72.5	15.9
<b>Coarse Grains</b>								
2006/07	29.1	2.0	59.1	1.0	8.5	35.8	51.4	5.4
2007/08	27.5	2.0	54.2	1.0	5.3	35.0	50.6	4.8
2008/09	30.3	2.6	79.0	0.7	17.1	41.5	58.1	9.3
2009/10	27.3	2.5	67.6	0.4	15.0	39.0	55.0	7.4
2010/11	22.2	2.1	47.6	1.2	8.7	28.5	41.9	5.5
2011/12	27.0	2.9	78.1	1.1	24.5	38.4	54.2	6.0
2012/13	27.6	2.5	68.5	1.1	19.9	35.3	50.8	4.9

## Former Soviet Union: Grain Supply and Demand (Wheat)

Millions of Tons/Hectares

Country Mktg Year	Area Harvested	Yield	Production	MY Imports	MY Exports	Feed and Residual	Total Consumpti	Ending Stocks
<b>Former Soviet Union - 12</b>								
<b>Kazakhstan</b>								
2009/10	14.8	1.2	17.1	0.0	8.3	2.7	7.6	4.3
2010/11	14.3	0.7	9.6	0.0	4.9	1.9	6.2	2.9
2011/12	13.8	1.6	22.7	0.0	11.8	2.6	7.4	6.4
2012/13	13.5	0.8	10.5	0.0	7.0	2.2	7.0	2.9
<b>Russia</b>								
2009/10	26.7	2.3	61.8	0.2	18.6	16.8	39.6	14.7
2010/11	21.8	1.9	41.5	0.1	4.0	16.0	38.6	13.7
2011/12	24.9	2.3	56.2	0.6	21.6	15.5	38.0	10.9
2012/13	21.8	1.7	38.0	1.5	10.0	12.5	34.5	5.9
<b>Ukraine</b>								
2009/10	6.8	3.1	20.9	0.0	9.3	3.3	12.3	2.4
2010/11	6.3	2.7	16.8	0.0	4.3	2.8	11.6	3.3
2011/12	6.7	3.3	22.1	0.1	5.4	6.1	15.0	5.2
2012/13	5.7	2.7	15.5	0.1	6.0	3.3	11.8	3.0
<b>Uzbekistan</b>								
2009/10	1.4	4.4	6.2	1.7	0.4	1.4	7.5	0.9
2010/11	1.4	4.6	6.5	1.6	0.5	1.5	7.7	0.8
2011/12	1.4	4.5	6.3	2.7	0.7	1.7	8.0	1.1
2012/13	1.4	4.8	6.7	1.5	0.5	1.5	7.7	1.1
<b>Other Former Soviet Union - 12</b>								
2009/10	3.4	2.4	8.2	3.5	0.7	1.9	11.2	3.6
2010/11	3.2	2.1	6.6	3.9	0.2	1.6	10.9	3.0
2011/12	3.2	2.3	7.4	4.7	0.1	1.8	11.4	3.5
2012/13	3.1	2.3	7.1	4.0	0.1	1.8	11.5	3.0
<b>Total Former Soviet Union - 12</b>								
2009/10	53.0	2.2	114.0	5.4	37.2	26.1	78.2	25.9
2010/11	46.9	1.7	81.1	5.7	13.9	23.8	75.0	23.8
2011/12	50.0	2.3	114.8	8.0	39.7	27.7	79.8	27.1
2012/13	45.5	1.7	77.8	7.1	23.6	21.3	72.5	15.9

## Former Soviet Union: Grain Supply and Demand (Barley)

Millions of Tons/Hectares

Country Mktg Year	Area Harvested	Yield	Production	MY Imports	MY Exports	Feed and Residual	Total Consumpti	Ending Stocks
<b>Former Soviet Union - 12</b>								
<b>Kazakhstan</b>								
2009/10	1.8	1.4	2.5	0.0	0.4	1.7	2.0	0.5
2010/11	1.6	0.8	1.3	0.1	0.2	1.2	1.5	0.1
2011/12	1.6	1.7	2.6	0.0	0.7	1.5	1.8	0.2
2012/13	1.6	0.9	1.5	0.0	0.2	1.2	1.4	0.1
<b>Russia</b>								
2009/10	7.7	2.3	17.9	0.0	2.7	12.2	16.7	2.4
2010/11	5.0	1.7	8.4	0.4	0.3	5.5	9.5	1.4
2011/12	7.7	2.2	16.9	0.5	3.5	9.8	14.3	0.9
2012/13	7.7	1.8	14.0	0.5	2.2	8.0	12.4	0.8
<b>Ukraine</b>								
2009/10	5.0	2.4	11.8	0.0	6.2	3.9	5.6	1.1
2010/11	4.3	2.0	8.5	0.0	2.8	4.4	6.0	0.8
2011/12	3.7	2.5	9.1	0.0	2.5	4.7	6.3	1.2
2012/13	3.3	2.0	6.7	0.0	2.2	3.2	4.8	0.9
<b>Uzbekistan</b>								
2009/10	0.1	3.2	0.2	0.0	0.0	0.2	0.3	0.0
2010/11	0.1	3.2	0.2	0.0	0.0	0.2	0.3	0.0
2011/12	0.1	3.2	0.2	0.1	0.0	0.3	0.3	0.0
2012/13	0.1	3.2	0.2	0.1	0.0	0.2	0.3	0.0
<b>Other Former Soviet Union - 12</b>								
2009/10	1.3	2.7	3.5	0.1	0.0	2.8	3.6	0.5
2010/11	1.4	2.4	3.3	0.2	0.0	2.6	3.4	0.5
2011/12	1.3	2.5	3.4	0.2	0.0	2.7	3.6	0.5
2012/13	1.3	2.4	3.3	0.2	0.0	2.7	3.6	0.4
<b>Total Former Soviet Union - 12</b>								
2009/10	16.0	2.3	36.0	0.2	9.3	20.7	28.1	4.4
2010/11	12.3	1.8	21.7	0.7	3.3	13.9	20.7	2.9
2011/12	14.4	2.2	32.3	0.8	6.7	19.0	26.3	2.9
2012/13	14.0	1.8	25.7	0.8	4.6	15.3	22.4	2.3



## Former Soviet Union: Grain Supply and Demand (Corn)

Millions of Tons/Hectares

Country Mktg Year	Area Harvested	Yield	Production	MY Imports	MY Exports	Feed and Residual	Total Consumpti	Ending Stocks
<b>Former Soviet Union - 12</b>								
<b>Kazakhstan</b>								
2009/10	0.1	4.7	0.5	0.0	0.0	0.3	0.4	0.0
2010/11	0.1	5.1	0.5	0.0	0.0	0.4	0.5	0.1
2011/12	0.1	4.9	0.5	0.0	0.0	0.4	0.5	0.0
2012/13	0.1	5.0	0.5	0.0	0.0	0.4	0.5	0.0
<b>Russia</b>								
2009/10	1.1	3.5	4.0	0.0	0.4	3.2	3.7	0.1
2010/11	1.0	3.0	3.1	0.1	0.0	2.8	3.2	0.1
2011/12	1.6	4.3	6.7	0.1	2.0	3.8	4.5	0.3
2012/13	1.9	4.5	8.5	0.1	2.3	5.5	6.3	0.3
<b>Ukraine</b>								
2009/10	2.1	5.0	10.5	0.0	5.1	5.0	5.7	0.7
2010/11	2.6	4.5	11.9	0.0	5.0	5.4	6.5	1.1
2011/12	3.5	6.4	22.8	0.1	15.2	6.5	7.8	1.1
2012/13	4.4	4.7	20.5	0.1	12.5	6.5	8.0	1.1
<b>Uzbekistan</b>								
2009/10	0.0	4.6	0.2	0.0	0.0	0.2	0.2	0.0
2010/11	0.0	4.6	0.2	0.0	0.0	0.2	0.2	0.0
2011/12	0.0	4.6	0.2	0.0	0.0	0.2	0.2	0.0
2012/13	0.0	3.4	0.1	0.0	0.0	0.1	0.1	0.0
<b>Other Former Soviet Union - 12</b>								
2009/10	0.8	3.3	2.6	0.2	0.1	2.6	2.9	0.7
2010/11	0.8	3.7	2.9	0.2	0.2	2.7	2.9	0.6
2011/12	0.8	4.2	3.5	0.2	0.3	3.0	3.3	0.8
2012/13	0.8	3.4	2.6	0.2	0.3	2.5	2.8	0.4
<b>Total Former Soviet Union - 12</b>								
2009/10	4.1	4.3	17.7	0.3	5.6	11.3	12.9	1.5
2010/11	4.6	4.0	18.5	0.3	5.2	11.4	13.3	1.9
2011/12	6.1	5.6	33.7	0.3	17.5	13.8	16.3	2.2
2012/13	7.2	4.5	32.3	0.3	15.1	15.0	17.8	1.9

**Wheat Supply and Disappearance: Selected Exporters**  
**Million Metric Tons/Hectares**

Country Mktg Year	Area Harvested	Yield	Production	MY Imports	MY Exports	Feed and Residual	Total Consumpti	Ending Stocks
<b>Wheat Competitors</b>								
<b>Argentina</b>								
2004/05	6.4	2.6	16.9	0.0	11.9	0.1	5.4	1.3
2005/06	5.5	2.5	13.8	0.0	9.6	0.0	5.1	0.4
2006/07	6.2	2.6	16.3	0.0	10.7	0.1	5.4	0.6
2007/08	6.6	2.8	18.6	0.0	11.2	0.1	5.7	2.4
2008/09	5.3	2.1	11.0	0.0	6.8	0.0	5.3	1.3
2009/10	4.0	3.0	12.0	0.0	5.1	0.0	5.8	2.3
2010/11	4.8	3.6	17.2	0.0	9.5	0.1	6.0	4.1
2011/12	5.2	3.0	15.5	0.0	12.9	0.1	6.0	0.8
2012/13	3.8	3.0	11.5	0.0	5.5	0.1	6.0	0.8
<b>Australia</b>								
2004/05	13.4	1.6	21.9	0.1	14.7	3.2	6.0	6.7
2005/06	12.5	2.0	25.2	0.1	16.0	3.7	6.6	9.4
2006/07	11.8	0.9	10.8	0.1	8.7	4.5	7.4	4.2
2007/08	12.6	1.1	13.6	0.1	7.5	3.5	6.6	3.7
2008/09	13.5	1.6	21.4	0.1	14.7	4.2	7.4	3.1
2009/10	13.9	1.6	21.8	0.1	14.8	1.9	5.2	5.1
2010/11	13.5	2.0	27.4	0.1	18.7	2.5	5.8	8.1
2011/12	14.0	2.1	29.9	0.1	24.7	3.2	6.5	7.0
2012/13	13.3	1.7	22.0	0.1	17.0	3.0	6.3	5.8
<b>Canada</b>								
2004/05	9.4	2.6	24.8	0.3	14.9	3.8	8.2	7.9
2005/06	9.4	2.7	25.7	0.3	16.0	3.8	8.2	9.7
2006/07	9.7	2.6	25.3	0.3	19.4	4.5	9.0	6.9
2007/08	8.6	2.3	20.1	0.4	16.1	2.2	6.8	4.4
2008/09	10.0	2.9	28.6	0.4	18.9	3.2	8.0	6.5
2009/10	9.6	2.8	26.8	0.4	19.0	2.2	6.9	7.8
2010/11	8.3	2.8	23.3	0.4	16.6	3.0	7.8	7.2
2011/12	8.6	3.0	25.3	0.5	17.4	4.6	9.7	5.9
2012/13	9.5	2.9	27.2	0.4	19.0	3.7	8.9	5.6
<b>Total Wheat Competitors</b>								
2004/05	29.2	2.2	63.6	0.3	41.5	7.1	19.6	15.9
2005/06	27.3	2.4	64.7	0.4	41.7	7.5	19.9	19.4
2006/07	27.7	1.9	52.4	0.4	38.9	9.1	21.7	11.6
2007/08	27.8	1.9	52.2	0.5	34.8	5.8	19.1	10.5

## Wheat Supply and Disappearance: Selected Exporters (Continued)

Million Metric Tons/Hectares

Country Mktg Year	Area Harvested	Yield	Production	MY Imports	MY Exports	Feed and Residual	Total Consumpti	Ending Stocks
2008/09	28.8	2.1	61.0	0.5	40.4	7.4	20.7	10.9
2009/10	27.5	2.2	60.7	0.5	39.0	4.1	17.9	15.2
2010/11	26.6	2.5	67.9	0.6	44.7	5.6	19.6	19.4
2011/12	27.7	2.6	70.7	0.6	54.9	7.9	22.2	13.6
2012/13	26.6	2.3	60.7	0.5	41.5	6.8	21.2	12.2
<b>India</b>								
2004/05	26.6	2.7	72.2	0.0	2.1	2.4	72.8	4.1
2005/06	26.5	2.6	68.6	0.0	0.8	2.2	70.0	2.0
2006/07	26.4	2.6	69.4	6.7	0.1	2.3	73.5	4.5
2007/08	28.0	2.7	75.8	2.0	0.0	2.5	76.4	5.8
2008/09	28.2	2.8	78.6	0.0	0.0	2.5	70.9	13.4
2009/10	27.8	2.9	80.7	0.2	0.1	2.8	78.2	16.1
2010/11	28.5	2.8	80.8	0.3	0.1	2.9	81.8	15.4
2011/12	29.4	3.0	86.9	0.0	0.9	3.1	81.4	20.0
2012/13	29.7	3.2	93.9	0.0	6.5	3.6	85.4	22.0
<b>Turkey</b>								
2004/05	8.6	2.2	18.5	0.4	2.0	1.0	16.8	1.8
2005/06	8.6	2.2	18.5	0.1	3.2	0.4	16.1	1.1
2006/07	8.6	2.0	17.5	1.7	2.4	0.8	16.7	1.3
2007/08	7.7	2.0	15.5	2.2	1.7	0.8	16.8	0.4
2008/09	7.7	2.2	16.8	3.5	2.2	0.7	16.9	1.5
2009/10	7.8	2.4	18.5	3.2	4.3	0.8	17.1	1.8
2010/11	8.0	2.1	17.0	3.7	3.0	0.8	17.3	2.2
2011/12	7.7	2.4	18.8	3.8	3.7	1.4	18.1	3.1
2012/13	7.8	2.0	15.5	3.8	3.3	0.7	17.5	1.6

**Corn Supply and Disappearance: Selected Exporters**  
**Million Metric Tons/Hectares**

Country Mktg Year	Area Harvested	Yield	Production	MY Imports	MY Exports	Feed and Residual	Total Consumpti	Ending Stocks
<b>Argentina</b>								
2004/05	2.8	7.4	20.5	0.0	14.6	3.5	5.2	1.1
2005/06	2.4	6.5	15.8	0.0	9.5	4.4	6.2	1.3
2006/07	2.8	8.0	22.5	0.0	15.3	4.8	6.7	1.8
2007/08	3.4	6.5	22.0	0.0	14.8	4.9	6.8	2.2
2008/09	2.5	6.2	15.5	0.0	10.3	4.5	6.4	1.0
2009/10	3.0	8.3	25.0	0.0	16.5	5.0	6.9	2.6
2010/11	3.8	6.7	25.2	0.0	16.3	5.3	7.3	4.1
2011/12	3.6	5.8	21.0	0.0	17.0	5.1	7.2	0.9
2012/13	3.7	7.4	27.5	0.0	18.5	5.5	8.3	1.7
<b>Brazil</b>								
2004/05	11.6	3.0	35.0	0.5	0.7	32.1	38.5	4.2
2005/06	12.9	3.2	41.7	1.1	4.5	33.0	39.5	3.0
2006/07	14.0	3.6	51.0	1.4	10.8	34.5	41.0	3.6
2007/08	14.7	4.0	58.6	0.7	7.8	36.0	42.5	12.6
2008/09	14.1	3.6	51.0	1.1	7.1	38.5	45.5	12.1
2009/10	12.9	4.3	56.1	0.4	11.6	40.0	47.0	10.0
2010/11	13.8	4.2	57.4	0.8	8.4	42.5	49.5	10.3
2011/12	15.2	4.8	73.0	0.8	21.0	45.0	52.5	10.6
2012/13	15.5	4.5	70.0	0.8	16.0	47.0	55.0	10.4
<b>China</b>								
2004/05	25.4	5.1	130.3	0.0	7.6	98.0	131.0	36.6
2005/06	26.4	5.3	139.4	0.1	3.7	101.0	137.0	35.3
2006/07	28.5	5.3	151.6	0.0	5.3	104.0	145.0	36.6
2007/08	29.5	5.2	152.3	0.0	0.5	106.0	150.0	38.4
2008/09	29.9	5.6	165.9	0.0	0.2	108.0	153.0	51.2
2009/10	31.2	5.3	164.0	1.3	0.2	118.0	165.0	51.3
2010/11	32.5	5.5	177.2	1.0	0.1	128.0	180.0	49.4
2011/12	33.5	5.7	192.8	5.2	0.1	131.0	188.0	59.3
2012/13	35.0	6.0	208.0	2.0	0.2	145.0	209.0	60.1
<b>South Africa</b>								
2004/05	3.2	3.6	11.7	0.4	2.1	5.0	9.7	3.2
2005/06	2.0	3.4	6.9	0.9	0.5	4.0	8.2	2.3
2006/07	2.9	2.5	7.3	1.1	0.5	4.4	8.6	1.7
2007/08	3.3	4.0	13.2	0.0	2.2	4.3	9.6	3.1
2008/09	2.9	4.3	12.6	0.0	1.7	4.3	9.9	4.1
2009/10	3.3	4.1	13.4	0.0	2.1	4.6	10.3	5.2

## Corn Supply and Disappearance: Selected Exporters (Continued)

Million Metric Tons/Hectares

Country Mktg Year	Area Harvested	Yield	Production	MY Imports	MY Exports	Feed and Residual	Total Consumpti	Ending Stocks
2010/11	2.9	3.8	10.9	0.4	2.4	5.0	10.7	3.4
2011/12	3.1	3.9	12.4	0.0	2.0	5.0	10.8	3.1
2012/13	3.3	4.1	13.5	0.0	2.5	5.1	11.1	3.0
<b>Total Corn Competitors</b>								
2004/05	43.0	4.6	197.5	0.9	25.0	138.6	184.4	45.1
2005/06	43.7	4.7	203.8	2.1	18.3	142.4	190.9	41.8
2006/07	48.2	4.8	232.4	2.6	31.9	147.7	201.3	43.6
2007/08	50.9	4.8	246.1	0.8	25.3	151.2	208.9	56.3
2008/09	49.4	5.0	245.0	1.2	19.3	155.3	214.8	68.4
2009/10	50.4	5.1	258.5	1.7	30.3	167.6	229.2	69.0
2010/11	52.9	5.1	270.8	2.2	27.3	180.8	247.5	67.2
2011/12	55.5	5.4	299.2	6.1	40.1	186.1	258.5	73.9
2012/13	57.5	5.6	319.0	2.8	37.2	202.6	283.4	75.1

**Barley Supply and Disappearance: Selected Exporters**  
**Million Metric Tons/Hectares**

Country Mktg Year	Area Harvested	Yield	Production	MY Imports	MY Exports	Feed and Residual	Total Consumpti	Ending Stocks
<b>Australia</b>								
2004/05	4.6	1.7	7.7	0.0	4.3	2.5	3.5	1.9
2005/06	4.4	2.2	9.5	0.0	5.3	2.5	3.5	2.6
2006/07	4.2	1.0	4.3	0.0	1.9	2.9	4.0	1.0
2007/08	4.9	1.5	7.2	0.0	3.4	2.1	3.1	1.7
2008/09	5.0	1.6	8.0	0.0	3.2	2.9	4.0	2.4
2009/10	4.4	1.8	7.9	0.0	3.9	3.3	4.5	1.9
2010/11	3.7	2.2	8.0	0.0	4.7	3.0	4.2	1.0
2011/12	3.8	2.2	8.3	0.0	5.3	2.1	3.3	0.8
2012/13	3.9	1.8	7.0	0.0	3.8	2.1	3.3	0.7
<b>Canada</b>								
2004/05	3.8	3.3	12.6	0.1	1.2	8.8	10.1	3.4
2005/06	3.6	3.2	11.7	0.0	2.3	8.4	9.6	3.3
2006/07	3.2	3.0	9.6	0.0	1.2	8.8	10.2	1.5
2007/08	4.0	2.7	11.0	0.1	3.0	6.6	7.9	1.6
2008/09	3.5	3.4	11.8	0.0	1.5	7.7	9.1	2.8
2009/10	2.9	3.3	9.5	0.0	1.3	7.3	8.5	2.6
2010/11	2.4	3.2	7.6	0.0	1.2	6.3	7.5	1.5
2011/12	2.4	3.3	7.9	0.0	1.3	5.7	6.9	1.2
2012/13	2.8	2.9	8.0	0.0	1.3	5.6	6.8	1.2
<b>EU-27</b>								
2004/05	13.7	4.7	64.1	0.3	3.3	38.6	54.6	11.1
2005/06	13.8	4.0	54.8	0.1	3.3	38.2	54.1	8.5
2006/07	13.8	4.1	56.2	0.2	3.5	38.7	55.7	5.8
2007/08	13.8	4.2	57.5	0.3	3.8	38.7	54.2	5.7
2008/09	14.5	4.5	65.5	0.3	3.6	41.5	57.0	10.9
2009/10	13.9	4.5	62.1	0.1	1.1	41.5	56.5	15.5
2010/11	12.5	4.3	53.5	0.2	4.9	41.2	56.4	7.9
2011/12	11.9	4.3	51.4	0.4	3.1	36.5	51.5	5.3
2012/13	12.6	4.3	54.4	0.2	3.5	37.8	52.8	3.6

**Sorghum Supply and Disappearance: Selected Exporters**  
**Million Metric Tons/Hectares**

Country Mktg Year	Area Harvested	Yield	Production	MY Imports	MY Exports	Feed and Residual	Total Consumpti	Ending Stocks
<b>Argentina</b>								
2004/05	0.6	5.2	2.9	0.0	0.4	2.4	2.6	0.4
2005/06	0.5	4.7	2.3	0.0	0.2	2.1	2.3	0.2
2006/07	0.6	4.7	2.8	0.0	1.1	1.5	1.7	0.2
2007/08	0.6	4.7	2.9	0.0	1.2	1.0	1.2	0.7
2008/09	0.5	3.7	1.7	0.0	1.1	1.0	1.1	0.2
2009/10	0.8	4.8	3.6	0.0	1.8	1.7	1.9	0.2
2010/11	1.0	4.4	4.4	0.0	1.7	2.1	2.3	0.6
2011/12	1.0	4.2	4.2	0.0	2.6	1.8	2.0	0.3
2012/13	1.2	4.5	5.2	0.0	2.6	2.2	2.5	0.4
<b>Australia</b>								
2004/05	0.8	2.7	2.0	0.0	0.2	1.8	1.8	0.1
2005/06	0.8	2.5	1.9	0.0	0.1	1.9	1.9	0.0
2006/07	0.6	2.1	1.3	0.0	0.1	1.2	1.2	0.0
2007/08	0.9	4.0	3.8	0.0	0.8	2.2	2.2	0.8
2008/09	0.8	3.5	2.7	0.0	1.0	1.8	1.8	0.7
2009/10	0.5	3.0	1.5	0.0	0.3	1.2	1.2	0.7
2010/11	0.6	3.1	1.9	0.0	0.9	1.4	1.4	0.4
2011/12	0.7	3.4	2.2	0.0	1.2	1.1	1.1	0.3
2012/13	0.8	3.2	2.4	0.0	1.1	1.4	1.4	0.2

## U.S. Grains Supply and Distribution: Wheat, Corn, Sorghum, Barley, Oats, Rye, and Rice

Thousand Metric Tons/Hectares

	Area Harvested	Yield	Rough Production	Production	Imports	TY Imports	Exports	TY Exports	Feed Dom. Consumption	Domestic Consumption	Ending Stocks
<b>Wheat</b>											
2010/11	19,271	3	nr	60,062	2,638	2,571	35,076	35,977	3,589	30,710	23,466
2011/12	18,496	3	nr	54,413	3,050	3,000	28,563	28,071	4,460	32,155	20,211
2012/13	19,826	3	nr	61,755	3,538	3,500	28,576	29,500	8,573	36,415	20,513
<b>Corn</b>											
2010/11	32,960	10	nr	316,165	703	684	46,590	45,244	121,798	285,014	28,644
2011/12	33,986	9	nr	313,918	736	765	39,184	38,430	115,506	279,007	25,107
2012/13	35,500	8	nr	272,432	2,540	2,500	29,211	31,000	105,415	254,444	16,424
<b>Sorghum</b>											
2010/11	1,948	5	nr	8,779	1	2	3,853	3,827	3,118	5,278	697
2011/12	1,590	3	nr	5,447	3	3	1,610	1,548	1,795	3,954	583
2012/13	2,030	3	nr	6,507	0	0	2,540	2,500	1,905	3,938	612
<b>Barley</b>											
2010/11	998	4	nr	3,925	207	148	165	181	1,085	4,537	1,945
2011/12	906	4	nr	3,392	354	469	192	179	818	4,193	1,306
2012/13	1,313	4	nr	4,796	435	450	218	200	1,197	4,571	1,748
<b>Oats</b>											
2010/11	511	2	nr	1,178	1,468	1,468	41	37	1,715	2,789	982
2011/12	380	2	nr	779	1,621	1,729	35	27	1,445	2,549	798
2012/13	423	2	nr	929	1,637	1,600	44	40	1,492	2,594	726
<b>Rye</b>											
2010/11	107	2	nr	189	141	148	4	3	93	330	20
2011/12	98	2	nr	161	151	174	4	8	80	317	11
2012/13	100	2	nr	176	191	175	5	5	114	353	20
<b>Rice, Milled</b>											
2010/11	1,463	8	11,027	7,593	582	621	3,528	3,247	nr	4,317	1,514
2011/12	1,059	8	8,391	5,868	615	650	3,222	3,300	nr	3,472	1,303
2012/13	1,083	8	9,006	6,327	651	700	3,346	3,450	nr	3,975	960

Notes: Wheat Trade Year (TY) statistics are on July/June years. Barley, corn, sorghum, rye and oats Trade Year (TY) statistics are on Oct/Sept years. Rice Trade Year (TY) statistics are for the subsequent calendar year; 'Imports' and 'Exports' columns contain data on the local marketing year: wheat, barley, oats and rye are June/May; corn and sorghum are Sept/Aug; rice is Aug/July.



**Total Wheat and Coarse Grains: Supply and Demand**

**Millions of Metric Tons/Hectares**

	<b>Area Harvested</b>	<b>Yield</b>	<b>Production</b>	<b>TY Exports</b>	<b>Feed Dom. Consumpti</b>	<b>Domestic Consumpti</b>	<b>Ending Stocks</b>
<b>Wheat and Coarse Grains</b>							
1983/84	563.8	2.1	1,162.5	193.2	589.7	1,216.1	278.5
1984/85	567.0	2.3	1,315.0	203.6	611.3	1,253.5	340.0
1985/86	570.9	2.3	1,328.5	165.2	614.5	1,247.9	420.6
1986/87	565.6	2.4	1,348.0	174.7	645.7	1,299.4	469.2
1987/88	544.8	2.4	1,285.9	202.2	656.5	1,329.8	423.1
1988/89	542.4	2.2	1,218.1	203.3	619.4	1,302.0	339.3
1989/90	548.9	2.4	1,327.4	208.9	644.4	1,346.2	320.5
1990/91	546.4	2.6	1,417.6	190.1	668.7	1,369.5	368.7
1991/92	544.1	2.5	1,355.7	207.5	651.4	1,364.9	359.5
1992/93	546.5	2.6	1,431.6	205.2	662.9	1,389.1	399.2
1993/94	536.6	2.5	1,356.1	188.2	655.6	1,389.2	366.1
1994/95	534.6	2.6	1,392.5	200.1	668.7	1,396.0	362.6
1995/96	527.7	2.5	1,338.5	187.5	639.9	1,381.9	319.1
1996/97	546.6	2.7	1,490.5	198.4	672.6	1,442.9	366.7
1997/98	535.9	2.8	1,491.6	190.3	683.1	1,444.7	413.6
1998/99	521.0	2.8	1,481.9	198.7	682.5	1,448.1	447.5
1999/00	507.0	2.9	1,464.9	214.3	688.0	1,468.0	443.8
2000/01	510.4	2.8	1,446.7	205.1	697.4	1,471.5	419.1
2001/02	513.8	2.9	1,480.2	208.5	711.0	1,495.5	403.7
2002/03	503.6	2.9	1,443.2	209.6	708.8	1,505.7	341.3
2003/04	511.9	2.9	1,471.2	206.2	714.4	1,533.7	278.8
2004/05	515.7	3.2	1,642.2	214.7	754.0	1,585.2	335.9
2005/06	518.9	3.1	1,599.2	222.8	753.9	1,615.3	319.8
2006/07	516.3	3.1	1,585.3	230.4	744.8	1,629.5	275.6
2007/08	533.2	3.2	1,692.9	245.7	758.9	1,675.6	292.9
2008/09	537.5	3.3	1,794.4	254.2	769.7	1,724.7	362.5
2009/10	532.9	3.4	1,800.0	254.7	776.2	1,765.6	397.0
2010/11	522.0	3.4	1,750.6	249.8	771.0	1,785.2	362.4
2011/12	533.4	3.5	1,849.0	285.9	804.6	1,850.9	360.5
2012/13	533.6	3.3	1,774.1	264.0	796.5	1,811.1	323.4

Notes: Wheat and coarse grains trade data are on July/June years through 1975/76. From 1976/77 to the present, coarse grains data are on an Oct/Sept trade year.

**World Wheat and Coarse Grains: Supply and Demand**

Millions of Metric Tons/Hectares

	Area Harvested	Yield	Production	TY Exports	Feed Dom. Consumpti	Domestic Consumpti	Ending Stocks
<b>Wheat</b>							
1990/91	231.0	2.5	588.8	101.3	131.5	554.3	171.6
1991/92	222.8	2.4	543.5	111.4	115.1	551.8	163.2
1992/93	222.1	2.5	562.6	113.2	111.6	547.7	177.9
1993/94	221.0	2.5	558.5	101.7	109.6	553.0	183.4
1994/95	213.3	2.5	523.0	101.5	101.4	542.1	164.2
1995/96	216.7	2.5	537.5	99.2	95.2	546.1	155.7
1996/97	227.1	2.6	581.5	104.0	99.6	573.4	163.8
1997/98	226.4	2.7	610.2	104.5	103.8	576.7	197.2
1998/99	219.2	2.7	590.4	102.0	106.8	578.3	209.4
1999/00	212.8	2.8	586.8	111.9	102.7	585.5	210.7
2000/01	215.7	2.7	583.1	102.4	108.8	586.7	207.1
2001/02	214.5	2.7	583.6	108.0	109.4	586.5	204.2
2002/03	213.8	2.7	569.6	106.8	113.7	604.5	169.2
2003/04	207.8	2.7	555.3	103.6	99.1	588.9	135.6
2004/05	216.1	2.9	626.7	113.4	108.7	606.3	156.0
2005/06	218.7	2.8	618.8	114.1	114.8	621.2	153.5
2006/07	212.2	2.8	596.1	115.6	110.1	615.7	133.9
2007/08	217.1	2.8	611.9	116.8	102.1	617.7	128.0
2008/09	224.7	3.0	682.8	143.5	121.2	643.3	167.6
2009/10	225.8	3.0	686.5	135.6	120.2	653.8	200.3
2010/11	218.3	3.0	652.2	133.7	116.0	654.7	197.8
2011/12	222.0	3.1	696.4	153.3	147.1	698.4	195.8
2012/13	217.6	3.0	655.1	140.3	132.3	673.9	176.9
<b>Coarse Grains</b>							
1990/91	315.3	2.6	828.8	88.9	537.3	815.2	197.1
1991/92	321.3	2.5	812.2	96.2	536.2	813.1	196.3
1992/93	324.4	2.7	868.9	91.9	551.3	841.4	221.3
1993/94	315.6	2.5	797.6	86.5	546.1	836.2	182.7
1994/95	321.3	2.7	869.4	98.6	567.4	853.8	198.3
1995/96	311.0	2.6	800.9	88.3	544.7	835.8	163.4
1996/97	319.5	2.8	909.1	94.4	573.0	869.5	203.0
1997/98	309.4	2.8	881.4	85.8	579.2	867.9	216.4
1998/99	301.8	3.0	891.5	96.7	575.7	869.7	238.1
1999/00	294.2	3.0	878.1	102.4	585.2	882.6	233.1
2000/01	294.7	2.9	863.7	102.7	588.7	884.7	212.0
2001/02	299.3	3.0	896.6	100.5	601.6	909.0	199.6
2002/03	289.8	3.0	873.6	102.8	595.1	901.2	172.1
2003/04	304.1	3.0	916.0	102.6	615.3	944.8	143.3
2004/05	299.6	3.4	1,015.6	101.3	645.3	978.9	180.0
2005/06	300.2	3.3	980.4	108.6	639.2	994.0	166.3
2006/07	304.0	3.3	989.2	114.7	634.7	1,013.8	141.7
2007/08	316.1	3.4	1,081.0	128.9	656.7	1,057.9	164.8
2008/09	312.8	3.6	1,111.6	110.7	648.5	1,081.5	195.0
2009/10	307.1	3.6	1,113.6	119.1	656.0	1,111.8	196.8
2010/11	303.7	3.6	1,098.3	116.2	655.0	1,130.5	164.6
2011/12	311.4	3.7	1,152.5	132.5	657.6	1,152.4	164.7
2012/13	316.0	3.5	1,118.9	123.7	664.2	1,137.2	146.5

Notes: Wheat and coarse grains trade data are on July/June years through 1975/76. From 1976/77 to the present, coarse grains data are on an Oct/Sept trade year.

## World Corn and Barley: Supply and Demand

Millions of Metric Tons/Hectares

	Area Harvested	Yield	Production	TY Exports	Feed Dom. Consumpti	Domestic Consumpti	Ending Stocks
<b>Corn</b>							
1990/91	129.1	3.7	482.0	58.8	318.5	473.4	141.4
1991/92	132.5	3.7	493.0	63.0	334.4	493.3	141.0
1992/93	133.1	4.0	535.6	62.6	348.7	512.1	162.7
1993/94	130.7	3.6	475.8	57.4	342.0	509.0	129.4
1994/95	135.2	4.1	559.3	71.9	371.5	535.6	153.2
1995/96	135.0	3.8	516.4	64.8	365.1	536.6	133.0
1996/97	141.5	4.2	593.0	66.7	387.7	560.1	165.8
1997/98	136.2	4.2	574.4	63.1	400.4	573.8	166.4
1998/99	138.9	4.4	606.0	68.7	404.3	581.5	191.0
1999/00	138.9	4.4	608.1	72.3	422.4	605.3	193.8
2000/01	137.2	4.3	591.4	75.9	427.1	610.1	175.1
2001/02	137.5	4.4	601.0	72.8	436.4	624.8	151.4
2002/03	137.3	4.4	603.2	77.0	433.2	627.5	127.0
2003/04	142.0	4.4	627.4	79.1	445.8	649.2	105.3
2004/05	145.4	4.9	715.8	76.0	475.7	689.5	131.6
2005/06	145.7	4.8	699.7	82.7	478.0	706.6	124.8
2006/07	149.4	4.8	714.5	91.5	478.4	728.6	110.6
2007/08	160.5	5.0	794.6	98.3	498.2	773.1	132.1
2008/09	159.1	5.0	800.0	84.0	481.4	784.1	148.1
2009/10	158.6	5.2	822.0	93.0	489.6	824.8	145.3
2010/11	163.9	5.1	831.4	91.9	501.3	849.6	127.1
2011/12	169.5	5.2	881.7	103.1	507.3	877.8	131.0
2012/13	174.6	4.9	849.1	97.0	514.7	862.5	117.6
<b>Barley</b>							
1990/91	72.4	2.5	179.5	19.6	130.8	175.5	31.5
1991/92	75.9	2.2	169.9	19.4	120.3	166.5	34.9
1992/93	72.6	2.3	166.3	16.4	119.0	165.6	35.0
1993/94	73.2	2.3	169.0	18.8	123.8	169.1	34.9
1994/95	72.2	2.2	160.7	15.3	120.9	165.6	30.0
1995/96	66.4	2.1	141.2	13.4	107.8	150.7	20.5
1996/97	64.2	2.4	153.1	17.9	106.3	149.5	24.1
1997/98	63.8	2.4	153.9	12.8	104.1	145.8	32.2
1998/99	56.6	2.4	136.0	17.8	99.5	139.3	29.0
1999/00	52.1	2.4	127.4	17.8	94.0	132.5	23.9
2000/01	53.2	2.5	133.1	16.2	94.6	134.4	22.6
2001/02	55.9	2.6	143.5	17.2	95.5	136.8	29.3
2002/03	55.0	2.4	134.4	16.3	95.0	136.1	27.5
2003/04	58.5	2.4	142.2	14.8	102.7	146.3	23.4
2004/05	57.7	2.6	152.2	17.0	100.2	142.6	33.0
2005/06	55.6	2.5	136.2	17.5	97.5	141.1	28.1
2006/07	56.6	2.4	137.0	14.6	98.4	143.7	21.4
2007/08	56.1	2.4	133.1	18.6	91.3	134.1	20.4
2008/09	55.5	2.8	155.0	18.2	100.1	144.0	31.4
2009/10	54.4	2.8	150.8	17.3	100.7	144.6	37.5
2010/11	47.5	2.6	122.7	15.2	91.3	135.9	24.4
2011/12	49.8	2.7	134.3	21.3	92.1	135.8	22.8
2012/13	51.1	2.5	130.1	17.7	88.5	132.8	20.1

Notes: Coarse grains trade data are on July/June years through 1975/76. From 1976/77 to the present, coarse grains data are on an Oct/Sept trade year.

## World Rice: Supply and Demand

Millions of Metric Tons/Hectares

	Area Harvested	Yield	Rough Production	Production	TY Exports	Domestic Consumpti	Ending Stocks
<b>Rice, Milled</b>							
1983/84	144.6	3.1	450.9	306.9	11.9	294.4	69.3
1984/85	144.1	3.2	464.9	316.8	11.0	298.4	87.7
1985/86	144.7	3.2	467.3	318.0	11.8	308.0	97.7
1986/87	144.8	3.2	464.6	316.1	12.9	310.4	103.3
1987/88	141.4	3.3	464.8	315.1	11.4	313.1	105.3
1988/89	146.6	3.3	490.8	332.1	14.0	325.7	111.7
1989/90	147.8	3.5	510.3	345.2	11.7	336.3	120.6
1990/91	147.0	3.5	519.4	351.4	12.3	345.3	126.7
1991/92	147.5	3.5	522.8	353.2	14.4	353.2	126.7
1992/93	146.5	3.6	524.2	354.0	14.9	357.5	123.2
1993/94	145.3	3.6	526.1	354.7	16.6	358.9	119.0
1994/95	147.3	3.7	539.9	364.1	20.8	365.5	117.6
1995/96	148.4	3.7	547.3	368.8	19.7	368.3	118.1
1996/97	150.1	3.8	565.3	381.4	18.9	379.2	120.3
1997/98	151.7	3.8	575.2	387.4	27.6	380.0	127.7
1998/99	153.1	3.8	587.0	394.9	24.8	388.6	134.0
1999/00	155.9	3.9	608.6	409.2	22.8	400.1	143.1
2000/01	152.4	3.9	594.1	399.3	24.4	395.6	146.7
2001/02	151.4	3.9	594.3	399.5	27.8	413.3	132.9
2002/03	146.9	3.8	563.1	378.2	27.5	408.1	103.0
2003/04	149.3	3.9	585.1	392.3	27.3	413.7	81.6
2004/05	151.8	3.9	596.6	400.9	29.0	408.5	74.0
2005/06	153.9	4.0	621.4	417.3	29.1	414.6	76.7
2006/07	154.5	4.0	624.7	419.9	31.9	421.3	75.4
2007/08	155.1	4.1	642.5	433.0	29.6	427.5	80.8
2008/09	158.2	4.2	667.7	448.7	29.4	437.1	92.4
2009/10	156.1	4.2	656.8	441.0	31.5	438.2	95.2
2010/11	157.6	4.3	670.4	449.3	36.2	445.8	98.7
2011/12	159.0	4.4	693.3	465.0	38.5	458.0	105.7
2012/13	158.4	4.4	693.7	465.3	36.1	468.5	102.5

Notes: Stocks, exports and consumption are expressed on a milled basis in marketing years.

---

## **ENDNOTES TO GRAIN: WORLD MARKETS AND TRADE**

### **REGIONAL TABLES**

**North America:** Canada, Mexico, the United States.

**Central America:** Belize, Costa Rica, El Salvador, Guatemala, Honduras, Nicaragua, Panama.

**Caribbean:** Anguilla, Antigua and Barbuda, Aruba, Bahamas, Barbados, Bermuda, British Virgin Islands, Cayman Islands, Cuba, Dominica, Dominican Republic, French West Indies, Grenada, Guadeloupe, Haiti, Jamaica and Dep, Leeward-Windward Islands, Martinique, Montserrat, Netherlands Antilles, Puerto Rico, Kitts and Nevis, St. Lucia, St. Vincent and the Grenadines, Trinidad and Tobago, Turks and Caicos Islands, Virgin Islands of the U.S.

**South America:** Argentina, Bolivia, Brazil, Chile, Colombia, Ecuador, Falkland Islands (Islas Malvinas), French Guiana, Guyana, Paraguay, Peru, Suriname, Uruguay, Venezuela.

**EU:** Austria, Belgium/Luxembourg, Bulgaria, Cyprus, Czech Republic, Denmark, Estonia, Finland, France, Germany, Greece, Hungary, Ireland, Italy, Latvia, Lithuania, Malta, Netherlands, Poland, Portugal, Romania, Slovakia, Slovenia, Spain, Sweden, United Kingdom.

**Other Europe:** Albania, Azores, Bosnia and Herzegovina, Croatia, Former Yugoslavia, Gibraltar, Iceland, Macedonia, Montenegro, Norway, Serbia, Switzerland.

**Former Soviet Union:** Armenia, Azerbaijan, Belarus, Georgia, Kazakhstan, Kyrgyzstan, Moldova, Russia, Tajikistan, Turkmenistan, Ukraine, Uzbekistan.

**Middle East:** Bahrain, Iran, Iraq, Israel, Jordan, Kuwait, Lebanon, Oman, Qatar, Saudi Arabia, Syria, Turkey, United Arab Emirates, Yemen.

**North Africa:** Algeria, Egypt, Libya, Morocco, Tunisia.

**Sub-Saharan Africa:** all African countries except North Africa.

**East Asia:** China, Hong Kong, Japan, South Korea, North Korea, Macau, Mongolia, Taiwan.

**South Asia:** Afghanistan, Bangladesh, Bhutan, India, Nepal, Pakistan, Sri Lanka, Maldives.

**Southeast Asia:** Brunei, Burma, Cambodia, Indonesia, Laos, Malaysia, Philippines, Singapore, Thailand, Vietnam.

**Oceania:** Australia, Fiji, New Zealand, Papua New Guinea.

---

## **OTHER NOTES**

**Local Marketing Years (LMY):** LMY refers to the 12-month period at the onset of the main harvest, when the crop is marketed (i.e., consumed, traded, or stored). The year first listed begins a country's LMY for that commodity (2011/12 starts in 2011); except for summer grains in certain Southern Hemisphere countries and for rice in selected countries, where the second year begins the LMY (2011/12 starts in 2012). Key exporter LMY's are:

<b>Wheat</b>	<b>Corn</b>	<b>Barley</b>	<b>Sorghum</b>
Argentina (Dec/Nov)	Argentina (Mar/Feb)	Australia (Nov/Oct)	Argentina (Mar/Feb)
Australia (Oct/Sep)	Brazil (Mar/Feb)	Canada (Aug/Jul)	Australia (Mar/Feb)
Canada (Aug/Jul)	China (Oct/Sep)	EU-27 (Jul/Jun)	United States (Sep/Aug)
China (Jul/Jun)	South Africa (May/Apr)	Russia (Jul/Jun)	
EU-27 (Jul/Jun)	United States (Sep/Aug)	Ukraine (Jul/Jun)	
India (Apr/Mar)		United States (Jun/May)	
Kazakhstan (Jul/Jun)			
Russia (Jul/Jun)			
Turkey (Jun/May)			
Ukraine (Jul/Jun)			
United States (Jun/May)			

For a complete list of local marketing years, please see the FAS website (<http://www.fas.usda.gov/psdonline/psdAvailability.aspx>).

**Stocks:** Unless otherwise stated, stock data are based on an aggregate of differing local marketing years and should not be construed as representing world stock levels at a fixed point in time.

**Consumption:** World totals for consumption reflect total utilization, including food, seed, industrial, feed, and waste; as well as differences in local marketing year imports and local marketing year exports. Consumption statistics for regions and individual countries, however, reflect food, seed, industrial, feed, and waste only.

**Trade:** All PSD tables are balanced on the different local marketing years. All trade tables contain Trade Year (TY) data which puts all countries on a uniform, 12-month period for analytical comparisons: wheat is July/June; coarse grains, corn, barley, sorghum, oats, and rye are Oct/Sept; and rice is calendar year.

**EU Consolidation:** The trade figures starting from 1999/00 represent EU-27 and exclude all intra-trade. For the years 1960/61 through 1998/99, figures are the EU-15 and also exclude all intra-trade. EU-15 member states' data for grains are no longer maintained in the official USDA database. Data for the individual NMS-10, plus Bulgaria and Romania, exists only prior to 1999/00.

**Statistics:** (1) Wheat trade statistics include wheat, flour, and selected pasta products on a grain equivalent basis. (2) Rice trade statistics include rough, brown, milled, and broken on a milled

---

equivalent basis. (3) Coarse grains statistics include corn, barley, sorghum, oats, rye, millet, and mixed grains but exclude trade in barley malt, millet, and mixed grains.

**Unaccounted:** This term includes grain in transit, reporting discrepancies in some countries, and trade to countries outside the USDA database.

The Field Crops and Livestock Branch, Industry and Sector Analysis Division, Foreign Agricultural Service, USDA, Washington DC 20250, prepared this circular. Information is gathered from official statistics of foreign governments and other foreign source materials, reports of U.S. agricultural attachés and Foreign Service officers, office research, and related information. Further information may be obtained by writing the Division or telephoning (202) 720-6590.

**Note:** The previous report in this series was the Grain: World Markets and Trade Foreign Agricultural Service Circular FG 11-12 November 2012. For further details on world grain production, please see World Agricultural Production Foreign Agricultural Service Circular WAP 12-12 December 2012.

This circular is available in its entirety on the World Wide Web via the Foreign Agricultural Service Home Page. The address is: <http://www.fas.usda.gov>