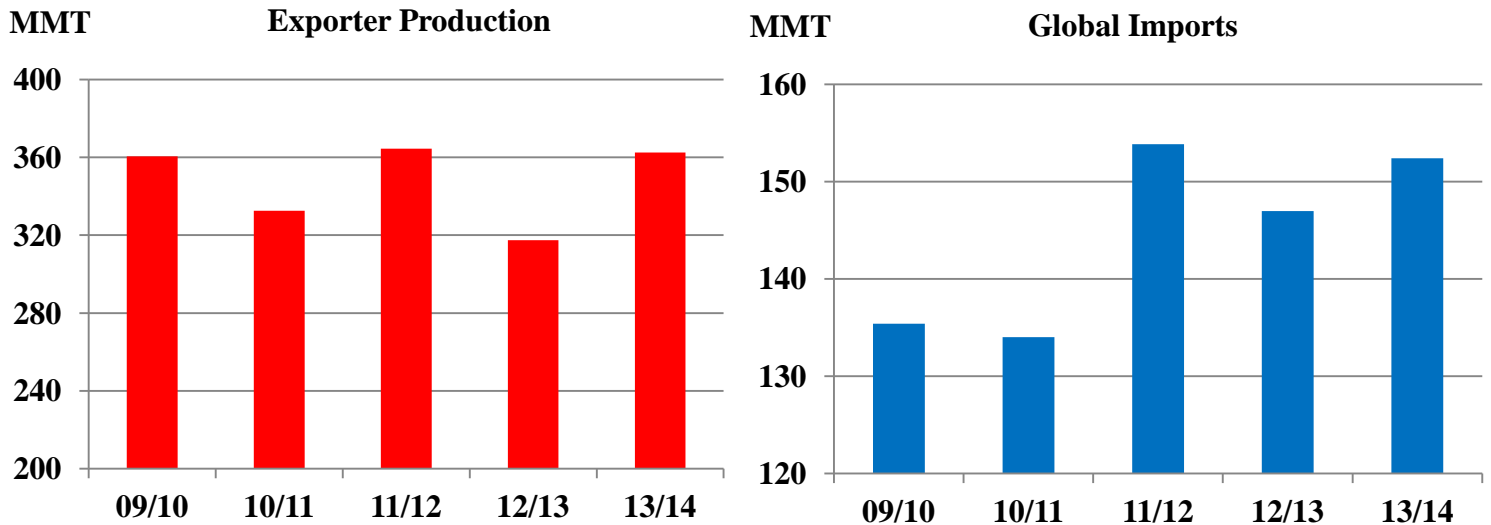




Grain: World Markets and Trade

Rising Exporter Wheat Production Meets Surging Import Demand



Exporters include: Argentina, Australia, Canada, EU, Kazakhstan, Russia, United States, and Ukraine.

As a whole, major exporting countries' wheat production is projected to reach a near-record, boosting exportable supplies. The Black Sea region accounts for most of the increase, but the EU and Canada are also up significantly. The United States is the only exporter with a smaller crop, but even so, exports are projected higher than last year.

In the past 2 years, global trade was driven by wheat substitution for corn in feed rations. Tight corn supplies and high prices created incentives for feeders to use more wheat. As the Northern Hemisphere corn harvest progresses, less feed-quality wheat will be imported as a result of ample corn supplies and plunging prices.

Import demand for milling-quality wheat, on the other hand, is surging. This is evidenced by greater U.S. export commitments (shipments plus outstanding sales) that are up 38 percent from last year, and strong EU export licenses which are double a year ago. In July and August, Russia exported nearly 30 percent (5 million tons) of its full-year projection. Wheat prices have tumbled as the record Northern Hemisphere wheat harvest nears completion. Some countries, China, Egypt, and Pakistan for example, are aggressively buying cheaper wheat to replenish depleted reserves.

TABLE OF CONTENTS

World Markets and Trade: Commentary and Current Data	
Wheat	4
Rice	9
Coarse Grains.....	14
Historical Data Series for Selected Regions and Countries.....	34
Endnotes to Grain: World Markets and Trade.....	53

The Foreign Agricultural Service (FAS) updates its production, supply and distribution database for cotton, oilseeds, and grains at 12:00 p.m. on the day the World Agricultural Supply and Demand Estimates (WASDE) report is released. It is available on the FAS website (<http://www.fas.usda.gov/psdonline/>). This circular is released at 12:30 p.m. on the same day, together with its downloadable data set.

All Grain Summary Comparison

	Marketing Year	Wheat			Rice, Milled			Corn		
		2011/12	2012/13	2013/14	2011/12	2012/13	2013/14	2011/12	2012/13	2013/14
Production										
United States	(Jun-May)	54.4	61.8	57.5	5.9	6.3	5.9	313.9	273.8	351.6
Other		642.8	593.4	651.4	460.0	462.7	470.9	570.4	586.2	605.0
World Total		697.2	655.2	708.9	465.8	469.0	476.8	884.4	860.1	956.7
Domestic Consumption										
United States	(Jun-May)	32.1	38.3	35.7	3.5	3.8	3.7	279.0	267.6	290.8
Other		656.2	648.7	665.9	452.6	462.1	468.8	584.7	605.3	636.5
World Total		688.3	687.1	701.5	456.1	465.9	472.4	863.8	872.9	927.4
Ending Stocks										
United States	(Jun-May)	20.2	19.6	15.3	1.3	1.2	1.0	25.1	16.8	47.1
Other		179.1	154.3	161.0	103.5	104.0	106.4	106.7	105.8	104.3
World Total		199.3	173.9	176.3	104.8	105.2	107.4	131.8	122.6	151.4
TY Imports										
United States	(Jun-May)	3.0	3.4	3.7	0.6	0.7	0.7	0.8	4.1	0.7
Other		148.5	140.2	145.7	36.4	35.1	36.4	100.2	93.5	101.5
World Total		151.6	143.6	149.4	37.0	35.8	37.1	101.0	97.6	102.2
TY Exports										
United States	(Jun-May)	28.1	27.7	30.0	3.3	3.4	3.2	38.4	17.5	32.5
Other		125.7	119.3	122.4	35.8	34.9	35.9	65.3	81.7	72.0
World Total		153.8	147.0	152.4	39.1	38.3	39.0	103.8	99.2	104.5

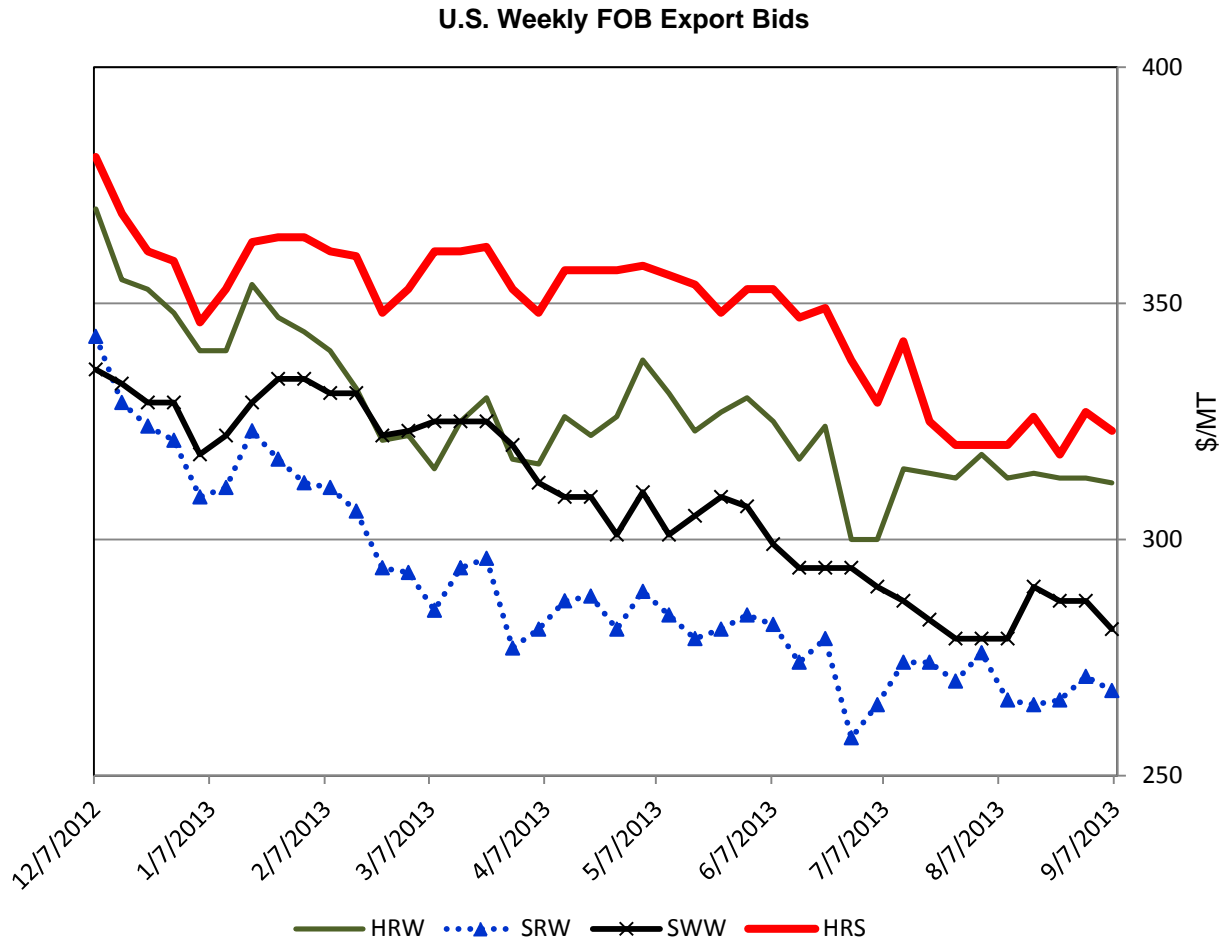
Note: Consumption in this table has not been adjusted for differences in marketing year imports and exports and therefore differs from global totals shown elsewhere.

Marketing years for U.S. grains are: Wheat (Jun-May), Rice (Aug-Jul), Corn (Sep-Aug).
'Marketing Year' column is germane for U.S. wheat only.

WHEAT: WORLD MARKETS AND TRADE

OVERVIEW

Global production for 2013/14 is raised this month and projected at a record, mostly driven by larger crops in Canada and the EU. Trade is up marginally. U.S. exports and the season-average U.S. farm price are unchanged. For 2012/13, global trade is unchanged.



PRICES:

Domestic: Over the past month, wheat prices were mixed, but nearly unchanged. Hard Red Winter (HRW) dropped \$6 to \$312/ton and Soft Red Winter (SRW) slid \$8 to \$268/ton. Hard Red Spring (HRS) rose \$3 to \$323/ton and Soft White Wheat (SWW) increased \$2 to \$281/ton.

TRADE CHANGES IN 2013/14

Selected Exporters

- **Canada** is up 500,000 tons to 20.5 million, the highest in 19 years, due to an enormous crop.
- **European Union** is boosted 1.0 million tons to 23.0 million supported by strong early-season export licenses as well as a larger crop.
- **Paraguay** is lowered 300,000 tons to 700,000 based on frost-induced production losses.
- **United Arab Emirates** is cut 400,000 tons to 300,000 due to more competitive direct shipments of wheat and flour from Black Sea exporters.
- **Uzbekistan** is down 300,000 tons to 400,000 as abundant Kazakh flour exports are expected to displace Uzbek shipments to Afghanistan.

Selected Importers

- **Egypt** is boosted 500,000 tons to 9.5 million on the pace of recent purchases.
- **Iran** is up 500,000 tons to 4.5 million on a smaller crop.
- **South Korea** is lowered 500,000 tons to 4.3 million in response to tender cancellations for feed-quality wheat and accelerated purchases of lower-priced corn.
- **Saudi Arabia** is cut 300,000 tons to 2.7 million because the government has not approved an import subsidy for feed-quality wheat.
- **United States** is raised 200,000 tons to 3.7 million on expectations of larger purchases of Canadian wheat.

TRADE CHANGES IN 2012/13

Selected Exporters - based on trade data

- **India** is raised 319,000 tons to 8.6 million tons.
- **Uzbekistan** is lowered 300,000 tons to 400,000 tons.

Selected Importers - based on trade data

- **European Union** is cut 400,000 tons to 5.3 million.

World Wheat, Flour, and Products Trade
July/June Year, Thousand Metric Tons

	2009/10	2010/11	2011/12	2012/13	2013/14 Aug	2013/14 Sep
TY Exports						
Argentina	5,255	7,742	11,951	7,449	5,000	5,000
Australia	13,764	18,455	23,031	21,300	19,000	19,000
Canada	18,992	16,768	17,603	18,581	20,000	20,500
European Union	22,279	23,086	16,691	22,200	22,000	23,000
India	60	73	1,722	8,619	5,000	5,000
Kazakhstan	7,871	5,519	11,069	7,000	9,000	9,000
Russia	18,556	3,983	21,627	11,289	17,000	17,000
Turkey	4,363	2,944	3,678	3,583	3,500	3,500
Ukraine	9,337	4,302	5,436	7,190	10,000	10,000
Uruguay	1,039	1,531	1,782	900	1,200	1,200
Others	9,738	13,556	11,115	11,178	10,170	9,183
Subtotal	111,254	97,959	125,705	119,289	121,870	122,383
United States	24,143	36,046	28,142	27,695	30,000	30,000
World Total	135,397	134,005	153,847	146,984	151,870	152,383
TY Imports						
Afghanistan	2,500	2,000	2,200	1,900	2,000	2,000
Algeria	5,167	6,516	6,500	6,273	6,000	6,000
Bangladesh	3,353	3,951	2,016	2,693	3,000	3,000
Brazil	6,690	6,742	7,052	7,548	7,500	7,700
China	1,394	927	2,933	2,960	9,500	9,500
Egypt	10,500	10,600	11,650	8,300	9,000	9,500
European Union	5,357	4,622	7,368	5,300	5,000	5,000
Indonesia	5,364	6,606	6,457	7,140	7,100	7,200
Iran	3,650	350	2,700	5,400	4,000	4,500
Iraq	3,899	3,631	3,785	3,960	3,200	3,200
Japan	5,502	5,869	6,354	6,598	6,000	6,000
Korea, South	4,470	4,761	5,188	5,439	4,800	4,300
Mexico	3,196	3,404	5,020	3,825	3,900	3,900
Morocco	2,304	4,019	3,671	3,825	2,000	2,000
Nigeria	3,990	4,052	3,931	4,150	4,000	4,000
Philippines	3,197	3,224	4,075	3,625	3,800	3,800
Saudi Arabia	1,909	1,742	2,904	1,950	3,000	2,700
South Africa	1,358	1,627	1,542	1,558	1,900	1,800
Sudan	1,901	1,604	2,361	1,750	1,900	1,900
Thailand	1,614	1,943	2,646	1,800	1,900	1,900
Tunisia	1,531	1,818	1,473	1,500	1,850	1,850
Turkey	3,218	3,546	4,414	3,325	3,500	3,500
Uzbekistan	1,677	1,618	2,698	1,863	1,900	1,900
Vietnam	1,927	2,460	2,711	1,700	2,100	1,900
Yemen	2,614	2,816	2,685	3,100	3,100	3,100
Others	41,097	37,770	44,205	42,701	43,670	43,570
Subtotal	129,379	128,218	148,539	140,183	145,620	145,720
Unaccounted	2,783	3,189	2,274	3,358	2,750	2,963
United States	3,235	2,598	3,034	3,443	3,500	3,700
World Total	135,397	134,005	153,847	146,984	151,870	152,383

TY=Trade Year, see Endnotes.

World Wheat Production, Consumption, and Stocks
Local Marketing Years, Thousand Metric Tons

	2009/10	2010/11	2011/12	2012/13	2013/14 Aug	2013/14 Sep
Production						
Argentina	12,000	17,200	15,500	10,000	12,000	12,000
Australia	21,834	27,410	29,905	22,079	25,500	25,500
Canada	26,950	23,300	25,288	27,205	29,500	31,500
China	115,120	115,180	117,400	121,000	121,000	121,000
Egypt	8,523	7,200	8,400	8,500	8,800	8,800
European Union	139,720	136,667	138,081	133,049	141,373	142,896
India	80,680	80,800	86,870	94,880	92,460	92,460
Iran	13,485	15,030	13,500	14,000	15,500	14,500
Kazakhstan	17,051	9,638	22,732	9,841	17,000	17,000
Morocco	6,400	4,887	5,800	3,870	6,800	7,000
Pakistan	24,000	23,900	25,000	23,300	24,000	24,000
Russia	61,770	41,508	56,240	37,720	54,000	54,000
Turkey	18,450	17,000	18,800	15,500	18,000	18,000
Ukraine	20,866	16,844	22,324	15,761	21,500	22,000
Uzbekistan	6,200	6,500	6,300	6,700	6,700	6,700
Others	53,570	49,289	50,615	50,035	53,709	53,999
Subtotal	626,619	592,353	642,755	593,440	647,842	651,355
United States	60,366	60,062	54,413	61,755	57,536	57,536
World Total	686,985	652,415	697,168	655,195	705,378	708,891
Total Consumption						
Algeria	8,550	8,750	8,950	9,250	9,450	9,450
Brazil	11,000	10,800	11,200	10,900	11,200	11,400
Canada	7,213	7,552	9,852	9,579	9,700	10,000
China	107,000	110,500	122,500	125,000	126,500	126,500
Egypt	18,100	17,700	18,600	18,700	18,700	18,700
European Union	125,622	122,844	126,875	121,000	122,700	122,700
India	78,150	81,760	81,404	83,841	90,970	90,970
Iran	16,800	16,200	15,500	16,400	17,000	17,000
Kazakhstan	7,600	6,200	7,400	6,500	7,400	7,400
Morocco	7,800	7,850	8,800	8,300	8,700	8,700
Pakistan	23,000	23,000	23,100	23,900	24,000	24,000
Russia	39,600	38,600	38,000	33,550	36,500	36,500
Turkey	17,100	17,300	18,100	17,500	17,750	17,750
Ukraine	12,300	11,600	14,950	11,800	11,500	11,500
Uzbekistan	7,500	7,700	8,000	8,075	8,050	8,150
Others	132,550	134,645	142,971	144,445	146,240	145,130
Subtotal	623,174	624,576	664,709	642,327	671,134	670,790
United States	30,977	30,639	32,112	38,341	35,680	35,680
World Total	654,151	655,215	696,821	680,668	706,814	706,470
Ending Stocks						
Canada	7,743	7,360	5,932	5,057	5,197	6,547
China	54,425	59,091	55,946	53,937	56,937	56,937
Egypt	5,605	5,480	6,698	4,598	3,498	3,998
European Union	16,575	11,934	13,817	8,966	11,039	11,162
India	16,120	15,360	19,950	24,200	20,200	20,200
Iran	4,200	2,766	1,474	5,104	7,404	6,904
Russia	14,722	13,736	10,899	5,180	6,180	6,180
Others	55,838	59,787	64,400	47,262	47,524	49,068
Subtotal	175,228	175,514	179,116	154,304	157,979	160,996
United States	26,552	23,466	20,211	19,550	15,007	15,279
World Total	201,780	198,980	199,327	173,854	172,986	176,275

Regional Wheat Imports, Production, Consumption, and Stocks

Thousand Metric Tons

	2009/10	2010/11	2011/12	2012/13	Aug 2013/14	Sep 2013/14
TY Imports						
North America	6,834	6,431	8,550	7,745	7,890	8,090
Central America	1,445	1,684	1,666	1,651	1,685	1,685
South America	13,170	13,158	13,778	14,400	14,440	14,640
European Union - 28	5,357	4,622	7,368	5,300	5,000	5,000
Other Europe	1,669	1,614	1,914	1,680	1,820	1,795
Former Soviet Union - 12	5,432	5,503	8,021	7,461	6,830	6,830
Middle East	22,575	17,513	23,389	24,005	23,515	23,640
North Africa	21,592	24,428	24,855	21,698	20,600	21,100
Sub-Saharan Africa	16,371	15,166	18,501	17,439	17,750	17,650
East Asia	13,754	13,903	16,877	17,349	22,675	22,175
South Asia	7,608	7,607	5,528	5,621	7,030	7,030
Southeast Asia	13,950	16,363	18,035	16,314	16,985	16,885
Others	2,857	2,824	3,091	2,963	2,900	2,900
Total	132,614	130,816	151,573	143,626	149,120	149,420
Production						
North America	91,464	87,038	83,329	92,191	90,455	92,455
South America	22,213	27,560	25,867	18,821	21,741	21,341
European Union - 28	139,720	136,667	138,081	133,049	141,373	142,896
Other Europe	3,734	3,178	3,634	3,489	3,991	4,191
Former Soviet Union - 12	114,012	81,068	115,032	77,212	106,960	107,960
Middle East	38,940	40,223	40,350	36,538	42,185	41,085
North Africa	20,241	15,914	18,311	17,232	20,412	20,612
Sub-Saharan Africa	6,656	5,430	6,184	6,132	6,283	6,373
East Asia	116,449	116,350	118,774	122,444	122,361	122,361
South Asia	111,144	110,949	117,132	125,336	123,526	123,526
Oceania	22,238	27,855	30,288	22,565	25,900	25,900
Others	174	183	186	186	191	191
Total	686,985	652,415	697,168	655,195	705,378	708,891
Domestic Consumption						
North America	44,490	44,641	49,564	54,545	51,880	52,180
South America	25,738	25,648	26,161	26,228	26,585	26,785
European Union - 28	125,622	122,844	126,875	121,000	122,700	122,700
Other Europe	4,900	4,737	4,875	4,733	5,101	5,081
Former Soviet Union - 12	78,215	75,055	79,870	71,472	75,445	75,775
Middle East	54,829	54,975	56,888	56,505	58,640	58,415
North Africa	39,441	38,806	40,872	40,987	41,562	41,562
Sub-Saharan Africa	21,143	20,785	22,554	23,106	23,486	23,391
East Asia	120,187	123,954	136,930	140,414	140,790	140,290
South Asia	113,755	117,008	115,839	120,452	127,761	127,761
Southeast Asia	13,106	14,998	16,736	16,384	16,495	16,495
Oceania	6,141	6,835	7,807	7,902	8,185	7,685
Others	3,295	3,354	3,343	3,353	3,410	3,410
Total	650,862	653,640	688,314	687,081	702,040	701,530
Ending Stocks						
North America	34,803	31,143	26,718	24,884	20,529	22,122
South America	7,703	8,437	4,275	3,903	4,485	4,384
European Union - 28	16,575	11,934	13,817	8,966	11,039	11,162
Other Europe	1,672	1,153	1,333	1,057	956	1,142
Former Soviet Union - 12	25,987	23,614	26,982	14,304	15,144	16,224
Middle East	14,012	12,842	12,230	13,188	15,815	15,358
North Africa	11,072	12,194	14,094	11,434	10,221	11,009
Sub-Saharan Africa	2,138	1,368	2,416	2,236	2,270	1,950
East Asia	57,307	62,168	59,398	57,292	60,037	60,033
South Asia	21,536	21,150	25,532	28,227	25,063	24,772
Southeast Asia	3,216	3,997	4,657	3,905	3,445	3,620
Oceania	5,343	8,598	7,440	4,034	3,568	4,084
Others	416	382	435	424	414	415
Total	201,780	198,980	199,327	173,854	172,986	176,275

NOTES: Regional definitions appear on last page of this circular. Imports are reported on a trade year basis. All other data are reported using local marketing years.

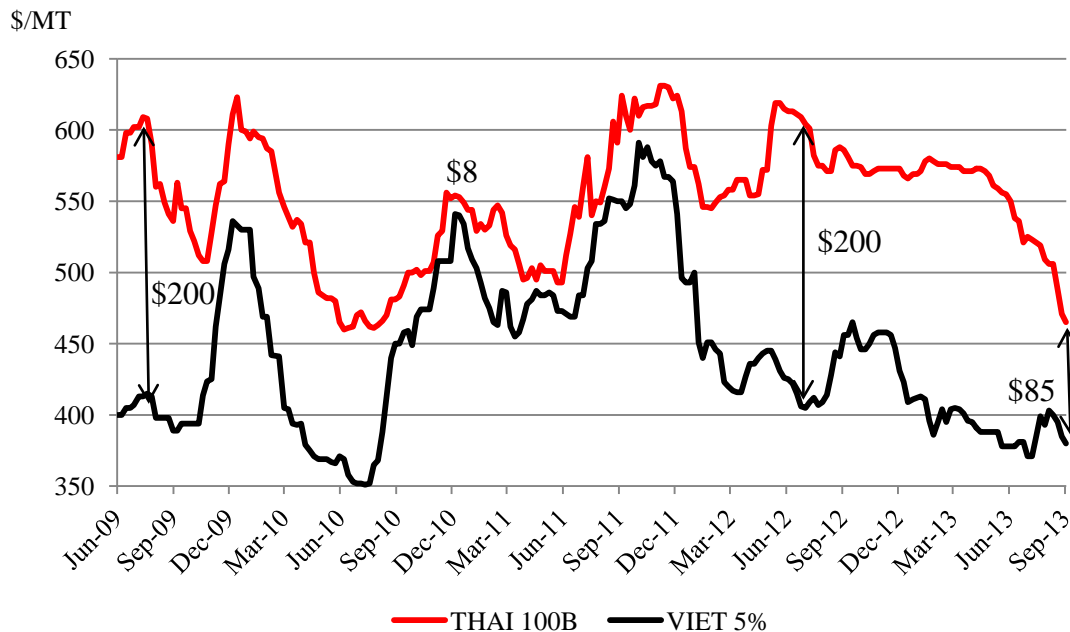
RICE: WORLD MARKETS AND TRADE

OVERVIEW

Still at record levels, global production and consumption for 2013/14 are projected down slightly from last month, largely due to a smaller crop in China. Ending stocks, virtually unchanged month-to-month, are expected to grow for the seventh consecutive year. Trade in 2013 and 2014, on the other hand, is up marginally from last month on Iranian demand but still slightly below the 2012 record.

PRICES

Thai Quotes Plummet, Narrowing Gap with Vietnamese Quotes (Again)



Quotes for Thai 100B dropped more than \$40/ton this month, cutting the premium over Viet 5% to around \$85. Largely policy-driven, the price gap between these suppliers has been volatile since mid-2009, ranging from \$8/ton to over \$200 on more than one occasion. The most recent widening occurred when the Thai government drove prices up by purchasing domestic supplies while Vietnamese traders dropped prices to compete with India. Thai quotes are now plummeting as the government tries to sell its massive stocks. Huge exportable supplies in the region are pushing quotes down elsewhere in Asia, though to a lesser degree.

TRADE CHANGES

Selected Exporters

- **Brazil** is down 100,000 tons to 750,000 in 2013 on a slow pace of shipments, especially to West Africa.
- **India** is raised 300,000 tons in 2013 and 2014 to 10.0 million and 9.3 million, respectively, on account of greater trade with Iran.

Selected Importers

- **Iran** is up 300,000 tons to 1.8 million in 2013 and 2014 on the pace of purchases from India.
- **Philippines** is cut 500,000 tons to 1.0 million in 2013 on a slow-down in shipments from Vietnam. The pace is expected to continue into 2014, causing a 100,000 ton drop to 1.1 million.

World Rice Trade
January/December Year, Thousand Metric Tons

	2009/10	2010/11	2011/12	2012/13	2013/14 Aug	2013/14 Sep
TY Exports						
Argentina	468	732	608	550	625	625
Australia	54	311	449	500	520	520
Brazil	430	1,296	1,105	750	850	850
Burma	445	778	690	750	750	750
Cambodia	750	860	800	975	1,000	1,000
China	619	487	267	350	350	350
Egypt	570	320	600	850	850	850
European Union	282	241	197	200	200	200
Guyana	298	257	285	300	345	345
India	2,228	4,637	10,250	10,000	9,000	9,300
Pakistan	4,000	3,414	3,399	3,000	3,100	3,100
Paraguay	135	208	262	275	250	250
Thailand	9,047	10,647	6,945	7,000	8,000	8,000
Uruguay	808	841	1,056	900	900	900
Vietnam	6,734	7,000	7,717	7,400	7,800	7,800
Others	833	970	1,192	1,127	1,017	1,017
Subtotal	27,701	32,999	35,822	34,927	35,557	35,857
United States	3,868	3,246	3,305	3,400	3,100	3,150
World Total	31,569	36,245	39,127	38,327	38,657	39,007
TY Imports						
Angola	280	275	353	500	525	525
Bangladesh	660	1,486	53	300	430	430
Brazil	778	591	732	750	700	700
Cameroon	300	310	450	525	525	525
China	366	575	2,900	3,200	3,400	3,400
Cote d'Ivoire	840	935	1,450	1,150	1,100	1,100
Cuba	498	558	330	525	450	450
European Union	1,216	1,475	1,306	1,200	1,200	1,200
Ghana	320	620	576	550	575	575
Hong Kong	390	381	415	425	420	420
Indonesia	1,150	3,098	1,960	1,000	1,500	1,500
Iran	1,520	1,870	1,550	1,800	1,450	1,750
Iraq	1,188	1,036	1,478	1,400	1,400	1,400
Japan	649	742	650	700	700	700
Malaysia	907	1,076	1,006	1,050	1,100	1,100
Mexico	575	705	680	725	750	750
Mozambique	325	360	410	450	470	470
Nigeria	2,000	2,550	3,400	2,300	2,400	2,400
Philippines	2,400	1,200	1,500	1,000	1,200	1,100
Saudi Arabia	1,069	1,059	1,193	1,225	1,250	1,250
Senegal	685	805	1,200	1,150	1,150	1,150
South Africa	733	885	870	950	975	975
Thailand	300	200	600	600	600	600
United Arab Emirates	400	420	430	440	450	450
Yemen	330	337	420	425	450	450
Others	8,867	9,700	10,488	10,710	10,966	10,981
Subtotal	28,746	33,249	36,400	35,050	36,136	36,351
Unaccounted	2,261	2,375	2,087	2,577	1,796	1,931
United States	562	621	640	700	725	725
World Total	31,569	36,245	39,127	38,327	38,657	39,007

TY=Trade Year, see Endnotes.

Note about dates: 2013/14 is calendar year 2014, 2012/13 is calendar year 2013, and so on.

World Rice Production, Consumption, and Stocks
Local Marketing Years, Thousand Metric Tons

	2009/10	2010/11	2011/12	2012/13	2013/14 Aug	2013/14 Sep
Milled Production						
Bangladesh	31,000	31,700	33,700	33,800	34,200	34,200
Brazil	7,929	9,300	7,888	8,065	8,500	8,300
Burma	11,642	10,528	10,816	10,666	11,000	11,000
Cambodia	4,056	4,233	4,268	4,600	4,900	4,900
China	136,570	137,000	140,700	143,300	143,000	142,000
Egypt	4,564	3,100	4,250	4,675	4,850	4,850
India	89,090	95,980	105,310	104,400	108,000	108,000
Indonesia	36,370	35,500	36,500	36,550	37,700	37,700
Japan	7,711	7,720	7,646	7,756	7,720	7,720
Korea, South	4,916	4,295	4,224	4,006	4,220	4,168
Nigeria	2,234	2,818	2,877	2,370	3,100	3,100
Pakistan	6,800	5,000	6,200	5,600	6,400	6,400
Philippines	9,772	10,539	10,710	11,428	11,700	11,700
Thailand	20,260	20,262	20,460	20,200	21,100	21,100
Vietnam	24,993	26,371	27,152	27,375	27,670	27,670
Others	35,598	37,360	37,259	37,869	38,090	38,064
Subtotal	433,505	441,706	459,960	462,660	472,150	470,872
United States	7,133	7,593	5,866	6,334	5,779	5,897
World Total	440,638	449,299	465,826	468,994	477,929	476,769
Consumption and Residual						
Bangladesh	31,600	32,400	34,300	34,450	34,600	34,600
Brazil	8,477	8,200	7,928	7,900	7,800	7,850
Burma	10,890	10,100	10,200	10,200	10,250	10,250
Cambodia	3,270	3,370	3,450	3,615	3,800	3,800
China	134,320	135,000	139,600	144,000	146,500	146,000
Egypt	3,940	3,300	3,620	3,900	4,000	4,000
India	85,508	90,206	93,334	95,500	98,500	98,200
Indonesia	38,000	39,000	39,550	39,550	39,800	39,800
Japan	8,200	8,200	8,050	8,250	8,150	8,150
Korea, South	4,701	5,175	4,905	4,612	4,497	4,497
Nepal	3,060	2,713	3,224	3,320	3,350	3,350
Nigeria	4,350	5,000	5,400	5,400	5,400	5,400
Philippines	13,125	12,900	12,860	12,850	12,900	12,800
Thailand	10,200	10,300	10,400	10,600	10,700	10,700
Vietnam	19,150	19,400	19,650	20,100	20,500	20,500
Others	52,360	53,912	56,162	57,863	58,811	58,861
Subtotal	434,094	441,177	456,218	464,913	471,714	470,863
United States	4,014	4,330	3,493	3,750	3,562	3,688
World Total	438,108	445,507	459,711	468,663	475,276	474,551
Ending Stocks						
China	40,534	42,574	45,023	46,882	46,432	45,932
India	20,500	23,500	25,100	24,000	24,500	24,500
Indonesia	6,577	6,175	5,085	3,085	2,485	2,485
Japan	2,693	2,712	2,747	2,753	2,823	2,823
Philippines	3,520	2,459	1,509	1,487	1,409	1,487
Thailand	6,100	5,615	9,330	12,530	15,530	15,530
Vietnam	1,470	1,941	1,826	1,801	1,271	1,271
Others	12,357	12,237	12,919	11,479	12,049	12,407
Subtotal	93,751	97,213	103,539	104,017	106,499	106,435
United States	1,184	1,514	1,303	1,156	969	956
World Total	94,935	98,727	104,842	105,173	107,468	107,391

Note: All data are reported on a milled basis.

Regional Rice Imports, Production, Consumption, and Stocks

Thousand Metric Tons

	2009/10	2010/11	2011/12	2012/13	Aug 2013/14	Sep 2013/14
TY Imports						
North America	1,495	1,654	1,664	1,765	1,825	1,825
Caribbean	969	1,099	845	1,080	1,010	1,010
South America	1,354	1,396	1,896	1,962	1,907	1,907
Other Europe	116	128	114	122	122	122
Former Soviet Union - 12	401	335	403	403	426	426
Middle East	5,808	5,989	6,351	6,555	6,330	6,630
North Africa	345	364	747	550	545	545
Sub-Saharan Africa	8,208	9,800	12,219	11,110	11,615	11,615
East Asia	1,960	2,444	4,389	5,151	5,116	5,116
South Asia	1,016	1,864	666	852	1,000	1,000
Southeast Asia	5,537	6,504	5,595	4,180	4,925	4,825
Others	2,099	2,293	2,151	2,020	2,040	2,055
Total	29,308	33,870	37,040	35,750	36,861	37,076
Production						
North America	7,315	7,739	5,979	6,462	5,901	6,019
Caribbean	954	938	1,024	885	991	991
South America	15,664	17,197	15,207	15,639	16,258	16,058
European Union - 28	2,176	2,172	2,105	2,101	2,107	2,107
Former Soviet Union - 12	1,144	1,321	1,294	1,286	1,254	1,254
Middle East	2,049	2,123	2,169	2,150	2,254	2,254
North Africa	4,598	3,139	4,289	4,704	4,889	4,889
Sub-Saharan Africa	11,159	13,032	12,419	12,350	12,895	12,895
East Asia	151,828	151,801	155,342	157,962	157,800	156,748
South Asia	132,878	138,116	151,656	149,935	154,820	154,820
Southeast Asia	110,063	110,476	112,992	113,995	117,321	117,321
Others	810	1,245	1,350	1,525	1,439	1,413
Total	440,638	449,299	465,826	468,994	477,929	476,769
Domestic Consumption						
North America	5,158	5,430	4,669	4,935	4,772	4,898
Central America	1,119	1,109	1,146	1,181	1,206	1,206
Caribbean	1,880	2,035	1,987	1,830	1,978	1,978
South America	14,880	14,457	14,195	14,286	14,321	14,371
European Union - 28	3,150	3,250	3,135	3,140	3,150	3,150
Former Soviet Union - 12	1,327	1,428	1,418	1,425	1,460	1,460
Middle East	7,781	8,183	8,399	8,600	8,685	8,735
North Africa	4,307	3,657	4,005	4,429	4,559	4,559
Sub-Saharan Africa	19,414	21,426	23,147	24,086	24,384	24,384
East Asia	150,349	151,733	155,911	160,367	162,607	162,107
South Asia	126,275	130,592	136,781	139,308	142,610	142,310
Southeast Asia	98,916	99,572	100,672	101,561	102,686	102,586
Others	609	634	661	712	702	702
Total	435,165	443,506	456,126	465,860	473,120	472,446
Ending Stocks						
North America	1,322	1,734	1,455	1,324	1,147	1,134
Central America	246	249	269	273	294	270
Caribbean	126	131	198	141	164	164
South America	1,905	2,168	1,509	1,701	1,986	1,970
European Union - 28	1,122	1,176	1,229	1,190	1,147	1,147
Middle East	1,634	1,723	1,492	1,567	1,196	1,646
North Africa	498	122	487	462	487	487
Sub-Saharan Africa	780	1,304	2,317	1,606	1,452	1,452
East Asia	45,098	46,690	48,874	50,734	50,488	49,936
South Asia	22,561	25,542	27,711	25,921	26,956	26,956
Southeast Asia	19,441	17,663	19,126	20,015	21,947	22,025
Oceania	46	27	40	120	90	90
Others	156	198	135	119	114	114
Total	94,935	98,727	104,842	105,173	107,468	107,391

NOTES: Regional definitions appear on last page of this circular. Imports are reported on a trade year basis. All other data are reported using local marketing years.

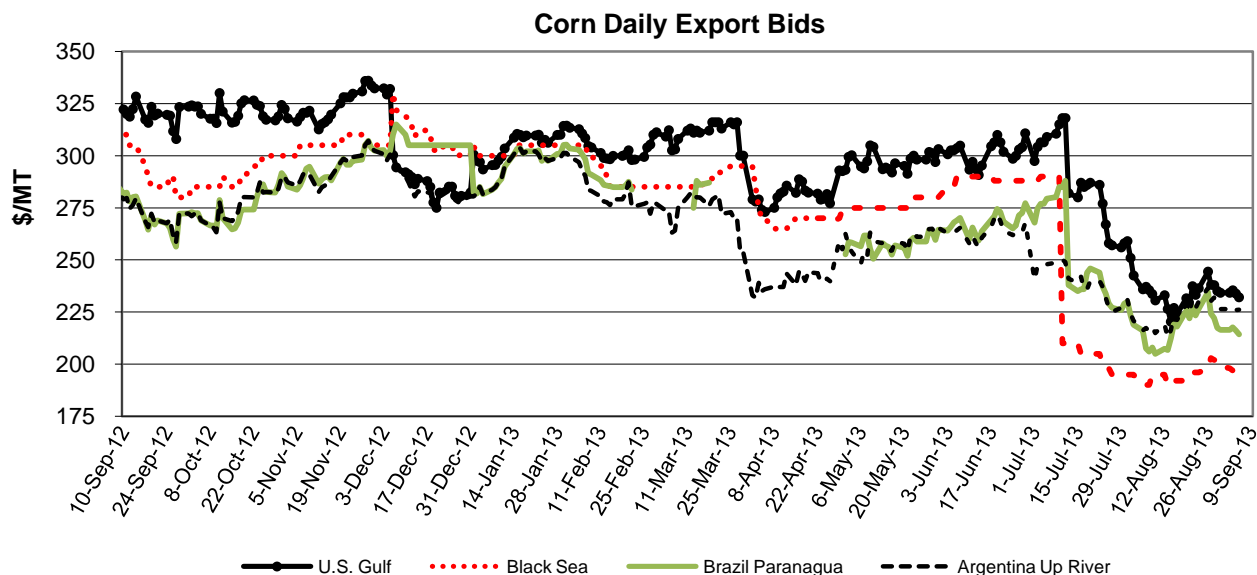
COARSE GRAINS: WORLD MARKETS AND TRADE

OVERVIEW

World corn production in 2013/14 is down as smaller crops in Argentina, Canada, and Serbia more than offset higher production in the United States. Global trade is largely unchanged, despite softening prices, prompting South Korea to boost corn feeding at the expense of wheat. The U.S. export estimate is unchanged but the season-average farm price is lowered as expectations for a record crop pressure prices. For 2012/13, U.S. exports are unchanged for the Oct/Sept trade year; the season-average farm price is reduced slightly.

HIGHLIGHT

Chinese sorghum is boosted 300,000 tons to 700,000 for 2013/14 based on reports of purchases from Australia and the United States. (Imports for 2012/13 are also boosted sharply, to 500,000 tons.) Although the exact timing of shipments is uncertain, total sorghum imports by China through the second half of calendar year 2013 are expected over 1.0 million tons. Since private-sector corn import quotas have been exhausted and are not available again until January 2014, sorghum has emerged as a price-competitive alternative to domestic Chinese feed grains.



PRICES

U.S. corn quotes have shed over \$90/ton since the peak in early July. In recent days, Brazilian prices have dropped as the country resumes shipments of its record 2012/13 crop. Ukraine has begun to harvest a record crop, pressuring global prices.

TRADE CHANGES IN 2013/14

Selected Exporters

- **Brazilian corn** is raised 500,000 tons to 20.5 million because shipments are expected to accelerate as the soybean export campaign subsides (**2012/13** exports are cut 500,000 tons to 26.5 million).
- **Paraguayan corn** is cut 300,000 tons to 2.0 million and **Serbian corn** is lowered 400,000 tons to 1.6 million due to smaller crops.
- **Canadian** and **Ukrainian barley** are each up 200,000 tons, to 1.4 million and 2.2 million, respectively, because of larger production and less competition from Russia.
- **Russian barley** is cut 500,000 tons to 3.3 million on reduced exportable supplies.
- **U.S. sorghum** is raised 200,000 tons to 4.0 million because of strong demand from China and greater exportable supplies.

Selected Importers

- **South Korean corn** is raised 500,000 tons to 9.4 million as relative prices improve corn's competitiveness against wheat for feeding.

TRADE CHANGES IN 2012/13

Selected Exporters – based on trade data

- **Argentine corn** is down 500,000 tons to 23.0 million.
- **EU corn** is boosted 200,000 tons to 1.9 million.
- **South African corn** is up 300,000 tons to 2.2 million.
- **Ukrainian corn** is trimmed 200,000 tons to 13.3 million.
- **EU barley** is raised 500,000 tons to 4.8 million.
- **Argentine sorghum** is cut 200,000 tons to 3.4 million.
- **Australian sorghum** is boosted 200,000 tons to 1.2 million.

Selected Importers – based on trade data

- **EU corn** is up 500,000 tons to 11.3 million.
- **Tunisian barley** is raised 300,000 tons to 800,000.

World Coarse Grain Trade
October/September Year, Thousand Metric Tons

	2009/10	2010/11	2011/12	2012/13	2013/14 Aug	2013/14 Sep
TY Exports						
Argentina	19,030	18,628	22,308	30,105	21,605	21,605
Australia	4,414	4,899	7,279	5,250	5,200	5,200
Brazil	8,627	11,592	12,677	26,530	20,005	20,505
Canada	3,070	4,428	3,854	4,875	4,050	4,225
European Union	4,293	5,865	7,152	6,955	7,055	7,055
India	2,072	3,437	4,858	5,275	3,575	3,575
Paraguay	1,363	1,201	2,188	2,405	2,305	2,005
Russia	2,526	1,029	5,997	4,435	5,910	5,410
South Africa	1,634	2,857	1,851	2,225	1,925	1,925
Ukraine	10,977	7,490	17,447	15,700	20,180	20,380
Others	6,855	5,345	7,613	4,575	6,035	5,635
Subtotal	64,861	66,771	93,224	108,330	97,845	97,520
United States	53,922	49,183	40,191	19,680	36,550	36,750
World Total	118,783	115,954	133,415	128,010	134,395	134,270
TY Imports						
Algeria	2,576	2,945	3,691	3,110	3,410	3,410
Brazil	1,049	633	1,211	1,105	1,205	1,205
Chile	1,275	1,271	1,523	1,375	1,525	1,525
China	3,777	2,697	7,924	5,750	9,650	9,950
Colombia	4,102	4,155	4,104	4,155	4,655	4,655
Cuba	736	838	746	850	900	900
Dominican Republic	1,098	999	1,054	1,100	1,200	1,200
Egypt	5,897	5,840	7,250	4,575	5,275	5,275
European Union	2,837	8,635	6,884	11,855	7,880	7,880
Indonesia	1,321	3,041	1,724	2,700	2,200	2,200
Iran	5,100	4,000	5,700	4,500	5,100	5,100
Israel	1,592	1,446	1,530	1,500	1,690	1,690
Japan	19,190	18,590	17,730	17,610	18,535	18,535
Jordan	713	917	1,158	1,350	1,400	1,400
Korea, South	8,509	8,168	7,726	8,590	8,990	9,490
Libya	1,238	543	829	900	850	850
Malaysia	3,107	2,809	3,309	3,100	3,400	3,400
Mexico	10,872	10,760	12,819	7,700	11,750	11,750
Morocco	2,194	2,059	2,479	1,900	2,250	2,250
Peru	1,886	2,079	1,928	2,060	2,260	2,260
Saudi Arabia	9,076	8,138	10,485	9,900	9,900	9,900
Taiwan	4,644	4,277	4,500	4,450	4,450	4,450
Tunisia	1,202	958	1,071	1,550	1,350	1,350
Venezuela	2,198	1,251	2,596	2,300	2,600	2,600
Vietnam	1,600	1,000	1,600	1,400	1,600	1,600
Others	15,200	14,538	14,858	13,765	13,100	13,125
Subtotal	112,989	112,587	126,429	119,150	127,125	127,950
Unaccounted	3,519	918	3,846	2,385	4,195	3,345
United States	2,275	2,449	3,140	6,475	3,075	2,975
World Total	118,783	115,954	133,415	128,010	134,395	134,270

TY=Trade Year, see Endnotes.

World Coarse Grains Production, Consumption, and Stocks
Local Marketing Years, Thousand Metric Tons

	2009/10	2010/11	2011/12	2012/13	2013/14 Aug	2013/14 Sep
Production						
Argentina	30,231	33,258	30,105	37,446	37,158	36,158
Australia	10,935	11,485	12,257	10,059	11,137	11,137
Brazil	58,182	60,380	75,884	83,767	74,813	74,813
Canada	22,780	22,668	22,921	24,299	25,775	25,635
China	169,775	183,771	199,297	212,390	217,480	217,480
Ethiopia	8,046	10,469	11,435	11,363	11,602	11,602
European Union	157,547	142,829	149,986	145,098	155,288	156,244
India	33,890	43,370	42,250	39,910	41,540	41,540
Indonesia	6,900	6,800	8,850	8,000	9,200	9,200
Mexico	27,273	29,226	25,753	28,028	29,465	29,465
Nigeria	20,480	20,720	17,421	18,573	21,900	19,200
Russia	31,843	16,416	33,077	28,658	35,600	35,100
South Africa	13,881	11,321	13,256	12,714	13,493	13,493
Turkey	11,176	10,185	11,275	10,575	12,875	12,875
Ukraine	24,185	21,503	33,476	29,527	37,470	37,970
Others	140,061	141,387	139,588	141,369	146,063	145,873
Subtotal	767,185	765,788	826,831	841,776	880,859	877,785
United States	348,755	330,236	323,728	286,005	364,764	367,750
World Total	1,115,940	1,096,024	1,150,559	1,127,781	1,245,623	1,245,535
Domestic Consumption						
Argentina	10,054	11,033	10,510	11,400	12,458	11,958
Brazil	49,514	52,733	53,738	56,088	57,133	57,133
Canada	22,746	21,201	20,280	20,439	21,300	21,151
China	173,251	188,448	196,992	216,375	233,325	233,625
Egypt	13,072	13,575	12,849	12,337	12,325	12,325
Ethiopia	8,543	9,925	11,260	11,307	11,625	11,625
European Union	152,412	154,657	151,066	153,605	155,270	155,750
India	32,000	38,850	37,850	35,125	37,300	37,300
Japan	19,645	18,875	17,990	17,810	18,730	18,730
Mexico	40,815	39,785	38,045	35,965	40,015	40,015
Nigeria	20,280	20,670	17,321	18,750	21,850	19,150
Russia	30,440	18,131	27,728	25,034	29,100	29,100
South Africa	10,833	11,213	11,252	11,378	11,573	11,573
Turkey	10,865	11,075	11,725	12,825	12,675	12,675
Ukraine	12,994	13,772	15,559	14,336	15,550	15,650
Others	202,379	204,988	208,334	212,642	217,767	218,862
Subtotal	817,631	829,658	861,074	861,506	911,438	908,585
United States	295,404	298,057	290,047	280,324	303,727	304,363
World Total	1,113,035	1,127,715	1,151,121	1,141,830	1,215,165	1,212,948
Ending Stocks						
Brazil	10,257	10,605	9,505	13,759	13,639	14,639
Canada	5,534	3,549	3,395	2,865	3,744	3,679
China	52,302	50,134	60,232	61,912	55,587	55,612
European Union	26,241	16,732	16,079	12,472	13,115	13,291
Iran	4,063	3,559	3,639	3,419	3,399	3,399
South Africa	5,367	3,581	3,881	3,397	3,397	3,397
Ukraine	2,217	2,149	2,421	2,090	3,912	4,110
Others	43,015	42,841	37,904	31,490	34,992	34,930
Subtotal	148,996	133,150	137,056	131,404	131,785	133,057
United States	48,133	32,288	27,820	19,423	49,900	50,357
World Total	197,129	165,438	164,876	150,827	181,685	183,414

Regional Coarse Grains Imports, Production, Consumption, and Stocks

Thousand Metric Tons

	2009/10	2010/11	2011/12	2012/13	Aug 2013/14	Sep 2013/14
TY Imports						
North America	15,158	14,264	16,723	14,720	15,370	15,270
Central America	2,537	2,900	2,768	2,650	3,000	3,000
Caribbean	2,166	2,193	2,159	2,330	2,480	2,480
South America	11,108	10,519	11,969	11,650	13,020	13,020
European Union - 28	2,837	8,635	6,884	11,855	7,880	7,880
Former Soviet Union - 12	456	1,134	1,013	795	785	810
Middle East	21,263	18,690	23,337	21,880	21,430	21,430
North Africa	13,107	12,345	15,320	12,035	13,135	13,135
Sub-Saharan Africa	2,778	2,029	2,998	2,410	2,370	2,370
East Asia	36,249	33,888	38,062	36,530	41,755	42,555
Southeast Asia	6,725	7,558	7,317	7,770	7,945	7,945
Others	880	881	1,019	1,000	1,030	1,030
Total	115,264	115,036	129,569	125,625	130,200	130,925
Production						
North America	398,808	382,130	372,402	338,332	420,004	422,850
South America	101,826	106,037	117,972	134,695	125,443	124,043
European Union - 28	157,547	142,829	149,986	145,098	155,288	156,244
Other Europe	9,387	9,800	9,383	6,265	9,671	8,896
Former Soviet Union - 12	67,674	47,582	78,669	69,021	85,216	85,216
Middle East	18,950	18,750	19,041	18,461	21,105	21,105
North Africa	14,858	12,452	11,220	10,479	11,854	11,954
Sub-Saharan Africa	92,787	97,796	95,523	99,850	101,744	99,929
East Asia	171,831	185,739	201,424	214,650	219,712	219,712
South Asia	40,511	49,884	48,901	46,736	48,366	48,366
Southeast Asia	25,451	26,374	28,379	28,601	30,590	30,590
Oceania	11,642	12,030	12,864	10,729	11,767	11,767
Others	4,668	4,621	4,795	4,864	4,863	4,863
Total	1,115,940	1,096,024	1,150,559	1,127,781	1,245,623	1,245,535
Domestic Consumption						
North America	358,965	359,043	348,372	336,728	365,042	365,529
South America	79,659	84,425	85,526	88,862	91,968	91,468
European Union - 28	152,412	154,657	151,066	153,605	155,270	155,750
Other Europe	8,518	8,495	8,214	6,702	8,276	8,026
Former Soviet Union - 12	55,033	41,882	54,383	50,526	56,251	56,351
Middle East	38,699	38,308	40,085	41,804	42,324	42,324
North Africa	24,626	25,685	25,353	24,167	25,355	25,455
Sub-Saharan Africa	92,173	96,927	94,465	100,117	102,218	100,263
East Asia	208,034	221,795	229,527	249,621	267,466	268,266
South Asia	38,754	45,439	44,683	41,893	43,763	43,763
Southeast Asia	31,175	33,139	34,612	36,000	37,305	37,305
Oceania	7,761	7,495	6,568	5,882	6,342	6,342
Others	9,438	9,698	9,692	9,833	10,143	10,143
Total	1,105,247	1,126,988	1,132,546	1,145,740	1,211,723	1,210,985
Ending Stocks						
North America	55,620	37,878	33,076	23,712	56,168	56,510
South America	17,444	20,111	13,432	17,309	17,860	18,859
European Union - 28	26,241	16,732	16,079	12,472	13,115	13,291
Other Europe	1,377	1,406	1,010	874	1,129	979
Former Soviet Union - 12	7,402	5,500	6,221	4,856	7,511	7,791
Middle East	9,271	7,508	9,416	8,522	8,643	8,643
North Africa	5,255	4,772	5,426	3,785	3,369	3,494
Sub-Saharan Africa	10,002	9,578	10,002	8,982	8,250	8,203
East Asia	55,775	53,394	63,247	64,721	58,592	58,617
South Asia	1,674	2,654	2,104	1,542	2,545	2,545
Southeast Asia	3,379	3,508	3,068	2,504	2,600	2,594
Oceania	2,807	1,584	980	777	952	952
Others	882	813	815	771	951	936
Total	197,129	165,438	164,876	150,827	181,685	183,414

NOTES: Regional definitions appear on last page of this circular. Imports are reported on a trade year basis. All other data are reported using local marketing years.

World Corn Trade
October/September Year, Thousand Metric Tons

	2009/10	2010/11	2011/12	2012/13	2013/14 Aug	2013/14 Sep
TY Exports						
Argentina	16,973	15,198	16,501	23,000	16,000	16,000
Brazil	8,623	11,583	12,674	26,500	20,000	20,500
Canada	186	1,658	494	1,700	1,000	1,000
European Union	1,569	1,096	3,287	1,900	2,500	2,500
India	1,917	3,376	4,674	4,800	3,500	3,500
Paraguay	1,359	1,201	2,188	2,400	2,300	2,000
Russia	427	37	2,027	2,000	2,000	2,000
Serbia	1,343	2,004	2,331	500	2,000	1,600
South Africa	1,586	2,839	1,831	2,200	1,900	1,900
Ukraine	5,072	5,008	15,157	13,300	18,000	18,000
Others	3,972	2,543	4,161	3,355	3,000	3,000
Subtotal	43,027	46,543	65,325	81,655	72,200	72,000
United States	49,696	45,135	38,428	17,500	32,500	32,500
World Total	92,723	91,678	103,753	99,155	104,700	104,500
TY Imports						
Algeria	2,569	2,683	3,203	2,800	3,000	3,000
Brazil	699	287	937	800	800	800
Chile	663	526	906	800	850	850
China	1,296	979	5,231	3,000	7,000	7,000
Colombia	3,651	3,511	3,209	3,200	3,600	3,600
Costa Rica	626	663	691	750	750	750
Cuba	736	838	746	850	900	900
Dominican Republic	1,098	999	1,054	1,100	1,200	1,200
Egypt	5,832	5,803	7,154	4,500	5,200	5,200
European Union	2,758	7,385	6,113	11,300	7,500	7,500
Guatemala	651	676	691	650	750	750
Indonesia	1,321	3,041	1,724	2,700	2,200	2,200
Iran	4,300	3,500	4,000	3,500	4,100	4,100
Israel	1,053	1,029	1,221	1,200	1,400	1,400
Japan	15,971	15,648	14,892	14,500	15,500	15,500
Korea, South	8,461	8,107	7,636	8,500	8,900	9,400
Malaysia	3,107	2,809	3,309	3,100	3,400	3,400
Mexico	8,298	8,252	11,172	5,500	8,000	8,000
Morocco	1,802	1,738	1,943	1,700	2,000	2,000
Peru	1,782	1,939	1,772	1,900	2,100	2,100
Saudi Arabia	1,872	1,933	1,816	2,100	2,300	2,300
Taiwan	4,521	4,134	4,341	4,300	4,300	4,300
Tunisia	866	677	853	750	850	850
Venezuela	2,198	1,251	2,596	2,300	2,600	2,600
Vietnam	1,600	1,000	1,600	1,400	1,600	1,600
Others	12,095	10,884	11,402	10,325	10,195	10,220
Subtotal	89,826	90,292	100,212	93,525	100,995	101,520
Unaccounted	2,660	702	2,776	1,530	2,955	2,330
United States	237	684	765	4,100	750	650
World Total	92,723	91,678	103,753	99,155	104,700	104,500

TY=Trade Year, see Endnotes.

World Corn Production, Consumption, and Stocks
Local Marketing Years, Thousand Metric Tons

	2009/10	2010/11	2011/12	2012/13	2013/14 Aug	2013/14 Sep
Production						
Argentina	25,000	25,200	21,000	26,500	27,000	26,000
Brazil	56,100	57,400	73,000	81,000	72,000	72,000
Canada	9,796	12,043	11,359	13,060	13,800	13,200
China	163,974	177,245	192,780	205,600	211,000	211,000
Egypt	6,280	6,500	5,500	5,800	5,600	5,600
European Union	59,147	58,265	68,089	58,539	65,025	64,996
India	16,720	21,730	21,760	22,230	22,500	22,500
Indonesia	6,900	6,800	8,850	8,000	9,200	9,200
Mexico	20,374	21,058	18,726	21,500	22,000	22,000
Nigeria	8,950	8,800	9,250	7,630	7,700	7,700
Philippines	6,231	7,271	7,130	7,261	7,400	7,400
Russia	3,963	3,075	6,962	8,213	9,000	9,000
Serbia	6,400	6,800	6,400	3,500	6,700	6,000
South Africa	13,420	10,924	12,759	12,200	13,000	13,000
Ukraine	10,486	11,919	22,838	20,922	29,000	29,000
Others	78,564	82,075	84,019	84,275	86,624	86,439
Subtotal	492,305	517,105	570,422	586,230	607,549	605,035
United States	332,549	316,165	313,949	273,832	349,597	351,637
World Total	824,854	833,270	884,371	860,062	957,146	956,672
Total Consumption						
Argentina	6,900	7,300	7,000	7,300	8,300	7,800
Brazil	47,000	49,500	50,500	53,000	54,000	54,000
Canada	11,868	11,761	11,636	11,900	12,800	12,400
China	165,000	180,000	188,000	207,000	224,000	224,000
Egypt	12,000	12,500	11,700	11,200	11,200	11,200
European Union	61,300	64,900	69,200	69,000	70,000	70,000
India	15,100	18,100	17,200	17,400	18,400	18,400
Indonesia	8,800	9,800	10,500	10,900	11,100	11,100
Japan	16,300	15,700	14,900	14,500	15,500	15,500
Korea, South	8,382	8,214	7,815	8,800	8,800	9,300
Mexico	30,200	29,500	29,000	27,000	29,000	29,000
Nigeria	8,800	8,800	9,250	7,800	7,700	7,700
Philippines	6,500	7,200	7,400	7,400	7,500	7,500
South Africa	10,300	10,650	10,700	10,800	11,000	11,000
Ukraine	5,700	6,500	7,800	7,900	9,100	9,100
Others	123,737	126,190	132,116	133,353	138,682	138,537
Subtotal	544,880	565,558	601,775	601,711	639,241	636,998
United States	281,615	285,123	279,035	267,601	290,844	290,844
World Total	826,495	850,681	880,810	869,312	930,085	927,842
Ending Stocks						
Brazil	9,989	10,276	9,210	13,510	13,310	14,310
Canada	1,731	1,263	1,365	1,325	1,925	1,625
China	51,302	49,415	59,335	60,885	54,835	54,835
European Union	5,568	5,222	6,937	5,876	5,601	5,872
Mexico	1,389	1,112	1,316	1,116	2,016	1,966
South Africa	5,169	3,418	3,676	3,201	3,226	3,226
Ukraine	672	1,121	1,051	823	2,773	2,773
Others	26,489	27,807	23,827	19,055	19,811	19,702
Subtotal	102,309	99,634	106,717	105,791	103,497	104,309
United States	43,380	28,644	25,122	16,798	46,671	47,110
World Total	145,689	128,278	131,839	122,589	150,168	151,419

Regional Corn Imports, Production, Consumption, and Stocks

Thousand Metric Tons

	2009/10	2010/11	2011/12	2012/13	Aug 2013/14	Sep 2013/14
TY Imports						
North America	10,496	9,920	12,684	10,100	9,250	9,150
Central America	2,537	2,889	2,765	2,650	3,000	3,000
South America	9,469	8,372	9,886	9,370	10,540	10,540
European Union - 28	2,758	7,385	6,113	11,300	7,500	7,500
Former Soviet Union - 12	259	324	328	315	290	315
Middle East	11,187	9,942	10,686	10,625	10,675	10,675
North Africa	11,725	11,265	13,799	10,300	11,700	11,700
Sub-Saharan Africa	1,821	1,547	2,381	1,835	1,885	1,885
East Asia	30,378	29,024	32,282	30,430	35,830	36,330
Southeast Asia	6,709	7,541	7,304	7,750	7,925	7,925
Caribbean	2,166	2,193	2,159	2,330	2,480	2,480
Others	558	574	590	620	670	670
Total	90,063	90,976	100,977	97,625	101,745	102,170
Production						
North America	362,719	349,266	344,034	308,392	385,397	386,837
South America	92,518	93,105	103,988	118,736	110,265	108,865
European Union - 28	59,147	58,265	68,089	58,539	65,025	64,996
Other Europe	7,615	8,071	7,673	4,580	7,955	7,180
Former Soviet Union - 12	17,727	18,434	34,121	32,395	42,360	42,360
Middle East	6,305	6,039	5,968	6,783	7,083	7,083
North Africa	6,486	6,780	5,701	6,001	5,801	5,801
Sub-Saharan Africa	54,661	56,520	59,863	56,011	57,098	57,388
East Asia	165,679	178,947	194,582	207,535	212,894	212,894
South Asia	22,020	26,956	27,198	27,668	27,938	27,938
Central America	3,542	3,549	3,698	3,740	3,743	3,743
Southeast Asia	25,212	26,135	28,138	28,364	30,350	30,350
Others	1,223	1,203	1,318	1,318	1,237	1,237
Total	824,854	833,270	884,371	860,062	957,146	956,672
Domestic Consumption						
North America	323,683	326,384	319,671	306,501	332,644	332,244
South America	70,639	73,923	75,121	77,745	80,595	80,095
European Union - 28	61,300	64,900	69,200	69,000	70,000	70,000
Other Europe	6,487	6,499	6,244	4,735	6,285	6,035
Former Soviet Union - 12	12,965	13,185	16,420	17,885	20,285	20,285
Middle East	16,885	16,885	16,848	18,160	17,810	17,810
North Africa	17,650	18,525	18,000	17,600	17,900	17,900
Sub-Saharan Africa	52,829	55,498	58,280	56,223	57,167	57,272
East Asia	196,111	209,870	217,047	236,555	254,515	255,015
South Asia	20,475	23,381	22,770	22,770	23,470	23,470
Southeast Asia	30,943	32,893	34,357	35,750	37,050	37,050
Central America	6,250	6,375	6,425	6,350	6,650	6,650
Others	3,285	3,420	3,369	3,580	3,555	3,555
Total	819,502	851,738	863,752	872,854	927,926	927,381
Ending Stocks						
North America	46,500	31,019	27,803	19,239	50,612	50,701
South America	16,383	17,943	12,398	16,216	16,258	17,261
European Union - 28	5,568	5,222	6,937	5,876	5,601	5,872
Other Europe	1,125	1,150	710	550	785	635
Former Soviet Union - 12	1,536	1,904	2,445	1,610	3,665	3,665
Middle East	4,409	3,509	3,448	2,731	2,639	2,639
North Africa	2,258	2,102	2,939	1,880	1,471	1,471
Sub-Saharan Africa	8,543	7,913	8,527	7,190	6,512	6,571
East Asia	54,090	52,055	61,806	63,166	57,325	57,325
South Asia	996	1,140	933	851	1,739	1,739
Southeast Asia	3,376	3,504	3,065	2,499	2,595	2,589
Central America	559	552	569	564	647	632
Others	346	265	259	217	319	319
Total	145,689	128,278	131,839	122,589	150,168	151,419

NOTES: Regional definitions appear on last page of this circular. Imports are reported on a trade year basis. All other data are reported using local marketing years.

World Barley Trade
October/September Year, Thousand Metric Tons

	2009/10	2010/11	2011/12	2012/13	2013/14 Aug	2013/14 Sep
TY Exports						
Argentina	549	1,531	3,631	3,700	2,600	2,600
Australia	3,846	4,088	5,819	3,800	4,100	4,100
Canada	1,203	1,052	1,437	1,500	1,200	1,400
Chile	0	1	2	5	5	5
China	13	9	4	10	5	5
Egypt	14	14	0	10	10	10
European Union	2,368	4,581	3,621	4,800	4,300	4,300
India	31	30	52	275	50	50
Kazakhstan	354	224	659	200	500	500
Moldova	45	10	5	10	10	10
Russia	2,086	969	3,668	2,300	3,800	3,300
Serbia	22	9	14	5	5	5
Turkey	801	1	103	50	50	50
Ukraine	5,752	2,446	2,166	2,200	2,000	2,200
Uruguay	0	0	0	100	25	25
Others	25	8	11	25	0	0
Subtotal	17,109	14,973	21,192	18,990	18,660	18,560
United States	152	181	179	150	200	200
World Total	17,261	15,154	21,371	19,140	18,860	18,760
TY Imports						
Algeria	6	262	479	300	400	400
Brazil	346	345	274	300	400	400
China	2,341	1,656	2,541	2,200	2,200	2,200
Colombia	237	251	301	250	250	250
Iran	800	500	1,700	1,000	1,000	1,000
Israel	491	287	276	200	225	225
Japan	1,411	1,359	1,257	1,300	1,300	1,300
Jordan	432	544	750	900	950	950
Kuwait	283	317	350	250	250	250
Libya	582	179	183	350	200	200
Morocco	248	222	536	200	250	250
Russia	13	411	372	250	250	250
Saudi Arabia	7,200	6,200	8,600	7,700	7,500	7,500
Tunisia	336	281	218	800	500	500
United Arab Emirates	299	334	525	500	500	500
Others	1,372	1,738	1,963	1,885	1,490	1,490
Subtotal	16,397	14,886	20,325	18,385	17,665	17,665
Unaccounted	562	120	577	255	645	545
United States	302	148	469	500	550	550
World Total	17,261	15,154	21,371	19,140	18,860	18,760

TY=Trade Year, see Endnotes.

World Barley Production, Consumption, and Stocks
Local Marketing Years, Thousand Metric Tons

	2009/10	2010/11	2011/12	2012/13	2013/14 Aug	2013/14 Sep
Production						
Algeria	2,400	1,500	1,350	1,500	1,750	1,750
Argentina	1,356	2,950	4,500	5,200	4,300	4,300
Australia	7,865	7,995	8,221	6,761	7,400	7,400
Belarus	2,123	1,966	2,013	2,100	1,700	1,700
Canada	9,528	7,627	7,892	8,012	8,500	9,000
China	2,318	1,972	2,300	2,350	2,300	2,300
Ethiopia	1,569	1,525	1,592	1,620	1,632	1,632
European Union	62,393	53,691	52,026	54,572	57,117	58,103
India	1,690	1,350	1,660	1,620	1,740	1,740
Iran	3,446	3,210	2,900	3,400	3,400	3,400
Kazakhstan	2,519	1,313	2,593	1,500	2,200	2,200
Morocco	3,800	2,570	2,340	1,200	2,600	2,700
Russia	17,881	8,350	16,938	13,952	17,500	17,000
Turkey	6,500	5,900	7,000	5,500	7,300	7,300
Ukraine	11,833	8,484	9,098	6,935	7,000	7,500
Others	8,699	8,331	8,525	8,324	8,921	8,941
Subtotal	145,920	118,734	130,948	124,546	135,360	136,966
United States	4,949	3,925	3,392	4,796	4,736	4,736
World Total	150,869	122,659	134,340	129,342	140,096	141,702
Total Consumption						
Algeria	1,350	1,600	1,800	2,000	2,150	2,150
Australia	4,500	4,200	3,300	3,100	3,300	3,300
Belarus	2,200	2,000	2,100	2,200	1,900	1,900
Canada	8,717	7,464	6,916	6,815	7,000	7,100
China	4,500	4,050	4,600	4,500	4,600	4,600
Ethiopia	1,550	1,525	1,535	1,432	1,650	1,650
European Union	56,770	56,610	51,230	51,820	52,220	52,700
India	1,500	1,350	1,550	1,525	1,700	1,700
Iran	3,700	3,700	3,900	4,500	4,200	4,200
Kazakhstan	2,000	1,475	1,825	1,375	1,650	1,650
Morocco	2,900	3,050	3,100	1,900	2,800	2,900
Russia	16,650	9,500	14,300	12,100	13,300	13,300
Saudi Arabia	7,425	6,325	7,225	7,925	7,925	7,925
Turkey	5,900	6,000	6,750	6,100	6,850	6,850
Ukraine	5,600	6,000	6,300	5,000	5,100	5,200
Others	14,832	14,767	15,376	15,552	15,912	15,927
Subtotal	140,400	131,329	131,587	127,621	132,926	134,021
United States	4,604	4,537	4,192	4,668	5,006	5,006
World Total	145,004	135,866	135,779	132,289	137,932	139,027
Ending Stocks						
Algeria	1,247	1,236	1,435	1,235	1,235	1,235
Canada	2,502	1,502	1,195	983	1,255	1,508
European Union	15,552	7,938	6,184	4,236	5,033	4,939
Iran	1,268	1,178	1,378	1,778	1,978	1,978
Russia	2,395	1,386	848	714	1,300	1,364
Saudi Arabia	2,078	1,253	2,728	2,603	2,178	2,178
Ukraine	1,067	794	1,172	1,003	967	1,133
Others	8,717	6,902	6,449	5,448	6,157	6,284
Subtotal	34,826	22,189	21,389	18,000	20,103	20,619
United States	2,515	1,945	1,306	1,748	1,804	1,804
World Total	37,341	24,134	22,695	19,748	21,907	22,423

9/12/2013 11:10:41 AM

Regional Barley Imports, Production, Consumption, and Stocks

Thousand Metric Tons

	2009/10	2010/11	2011/12	2012/13	Aug 2013/14	Sep 2013/14
TY Imports						
North America	373	227	619	625	725	725
South America	772	905	851	960	960	960
European Union - 28	66	288	340	100	100	100
Other Europe	134	189	209	230	205	205
Former Soviet Union - 12	195	654	672	480	495	495
Middle East	10,019	8,604	12,532	11,050	10,585	10,585
North Africa	1,215	960	1,458	1,700	1,400	1,400
Sub-Saharan Africa	59	77	80	55	65	65
East Asia	3,842	3,107	3,946	3,625	3,625	3,625
South Asia	10	8	68	55	50	50
Oceania	14	15	19	5	5	5
Total	16,699	15,034	20,794	18,885	18,215	18,215
Production						
North America	14,996	12,224	11,771	13,371	13,786	14,286
South America	2,443	3,869	5,535	6,304	5,440	5,440
European Union - 28	62,393	53,691	52,026	54,572	57,117	58,103
Other Europe	1,163	1,112	1,163	1,181	1,212	1,212
Former Soviet Union - 12	35,988	21,682	32,245	25,977	30,030	30,030
Middle East	11,320	11,100	11,670	10,275	12,619	12,619
North Africa	7,340	4,589	4,448	3,408	4,983	5,083
Sub-Saharan Africa	1,950	1,917	2,099	2,078	2,047	2,067
East Asia	2,646	2,215	2,602	2,652	2,615	2,615
South Asia	2,330	1,957	2,192	2,327	2,447	2,447
Oceania	8,300	8,303	8,589	7,197	7,800	7,800
Total	150,869	122,659	134,340	129,342	140,096	141,702
Domestic Consumption						
North America	14,021	12,701	11,808	12,133	12,706	12,806
South America	2,933	2,937	3,072	3,490	3,370	3,370
European Union - 28	56,770	56,610	51,230	51,820	52,220	52,700
Other Europe	1,282	1,309	1,336	1,370	1,399	1,399
Former Soviet Union - 12	28,088	20,677	26,323	22,285	23,660	23,760
Middle East	20,403	19,694	21,786	21,996	22,936	22,936
North Africa	5,847	5,925	6,199	5,462	6,350	6,450
Sub-Saharan Africa	1,990	2,012	2,048	1,944	2,160	2,175
East Asia	6,276	5,771	6,375	6,250	6,355	6,355
South Asia	2,163	1,967	2,122	2,237	2,407	2,407
Oceania	4,925	4,550	3,700	3,525	3,700	3,700
Total	144,698	134,153	135,999	132,512	137,263	138,058
Ending Stocks						
North America	5,214	3,647	2,621	2,864	3,192	3,445
South America	601	851	590	532	932	932
European Union - 28	15,552	7,938	6,184	4,236	5,033	4,939
Other Europe	203	191	206	238	251	251
Former Soviet Union - 12	4,472	2,830	2,740	2,332	2,857	3,087
Middle East	4,813	3,923	5,878	5,707	5,925	5,925
North Africa	2,953	2,612	2,451	1,874	1,872	1,997
Sub-Saharan Africa	236	223	339	525	480	482
East Asia	1,139	681	850	867	747	747
South Asia	224	197	258	118	158	158
Oceania	1,934	1,041	578	455	460	460
Total	37,341	24,134	22,695	19,748	21,907	22,423

NOTES: Regional definitions appear on last page of this circular. Imports are reported on a trade year basis. All other data are reported using local marketing years.

World Sorghum Trade
October/September Year, Thousand Metric Tons

	2009/10	2010/11	2011/12	2012/13	2013/14 Aug	2013/14 Sep
TY Exports						
Argentina	1,507	1,893	2,163	3,400	3,000	3,000
Australia	350	575	1,185	1,200	900	900
China	41	68	36	25	50	50
Ethiopia	0	75	75	75	75	75
India	124	31	132	200	25	25
Nigeria	50	60	75	0	50	50
Ukraine	41	34	113	150	150	150
Others	178	80	128	160	130	130
Subtotal	2,291	2,816	3,907	5,210	4,380	4,380
United States	4,032	3,827	1,549	2,000	3,800	4,000
World Total	6,323	6,643	5,456	7,210	8,180	8,380
TY Imports						
Chile	568	729	544	500	600	600
China	83	4	84	500	400	700
Colombia	212	391	592	700	800	800
European Union	7	922	126	350	175	175
Japan	1,649	1,418	1,481	1,700	1,600	1,600
Mexico	2,486	2,379	1,369	2,000	3,500	3,500
Peru	31	57	59	60	60	60
Saudi Arabia	4	5	69	100	100	100
Sudan	400	200	125	100	100	100
Taiwan	71	97	84	100	100	100
Others	795	509	525	560	435	435
Subtotal	6,306	6,711	5,058	6,670	7,870	8,170
Unaccounted	17	-69	395	265	310	210
United States	0	1	3	275	0	0
World Total	6,323	6,643	5,456	7,210	8,180	8,380

TY=Trade Year, see Endnotes.

World Sorghum Production, Consumption, and Stocks
Local Marketing Years, Thousand Metric Tons

	2009/10	2010/11	2011/12	2012/13	2013/14 Aug	2013/14 Sep
Production						
Argentina	3,629	4,400	4,200	5,200	5,400	5,400
Australia	1,508	1,935	2,239	1,721	2,100	2,100
Brazil	1,624	2,314	2,222	2,116	2,100	2,100
Burkina	1,522	1,990	1,500	1,924	1,800	1,800
Cameroon	1,060	1,099	1,150	1,100	600	1,100
Chad	600	680	648	1,200	900	900
China	1,677	2,456	2,050	2,190	2,000	2,000
Egypt	900	900	900	900	900	900
Ethiopia	2,084	3,465	3,781	3,570	3,700	3,700
India	6,700	7,000	6,030	5,300	5,800	5,800
Mali	980	925	1,257	1,117	1,100	1,100
Mexico	6,250	7,385	6,425	5,850	6,800	6,800
Niger	739	1,300	807	1,000	1,000	1,000
Nigeria	6,600	6,750	6,900	5,943	6,500	6,500
Sudan	4,192	2,630	2,089	4,271	3,800	3,800
Others	6,349	6,609	7,064	7,144	7,365	7,365
Subtotal	46,414	51,838	49,262	50,546	51,865	52,365
United States	9,728	8,779	5,447	6,272	9,116	10,062
World Total	56,142	60,617	54,709	56,818	60,981	62,427
Total Consumption						
Argentina	1,900	1,900	1,900	2,050	2,300	2,300
Australia	1,205	1,405	1,105	805	1,130	1,130
Brazil	1,675	2,275	2,275	2,100	2,100	2,100
Burkina	1,686	1,900	1,500	1,900	1,800	1,800
Cameroon	1,070	1,109	1,175	1,110	610	1,110
China	1,900	2,200	2,200	2,600	2,500	2,800
Colombia	380	580	755	855	980	980
Ethiopia	2,400	3,200	3,700	3,700	3,700	3,700
India	6,600	6,800	6,100	5,100	5,700	5,700
Japan	1,650	1,460	1,475	1,700	1,600	1,600
Mali	980	925	1,257	1,117	1,100	1,100
Mexico	9,700	9,400	8,100	8,100	10,100	10,100
Niger	950	1,250	950	1,000	1,050	1,050
Nigeria	6,550	6,700	6,800	5,950	6,450	6,450
Sudan	4,500	3,000	2,450	4,200	3,900	3,900
Others	8,852	10,157	9,489	10,255	10,110	10,160
Subtotal	52,348	54,294	52,756	52,235	55,500	56,304
United States	5,901	5,278	3,953	4,877	4,953	5,589
World Total	58,249	59,572	56,709	57,112	60,453	61,893
Ending Stocks						
Argentina	152	950	167	217	317	317
Australia	681	361	230	146	166	166
China	275	467	365	430	255	280
India	154	327	123	123	198	198
Mexico	360	724	418	168	368	368
Nigeria	200	190	215	208	208	208
Sudan	574	399	143	309	315	304
Others	903	1,277	1,148	1,157	1,139	1,042
Subtotal	3,299	4,695	2,809	2,758	2,966	2,883
United States	1,048	697	583	340	731	749
World Total	4,347	5,392	3,392	3,098	3,697	3,632

Regional Sorghum Imports, Production, Consumption, and Stocks

Thousand Metric Tons

	2009/10	2010/11	2011/12	2012/13	Aug 2013/14	Sep 2013/14
TY Imports						
North America	2,486	2,380	1,372	2,275	3,500	3,500
South America	848	1,218	1,200	1,295	1,495	1,495
European Union - 28	7	922	126	350	175	175
Other Europe	17	0	0	0	0	0
Middle East	48	121	101	175	150	150
North Africa	166	120	54	25	25	25
Sub-Saharan Africa	877	390	526	495	395	395
East Asia	1,806	1,523	1,655	2,305	2,105	2,405
Southeast Asia	16	17	13	20	20	20
Others	35	21	14	5	5	5
Total	6,306	6,712	5,061	6,945	7,870	8,170
Production						
North America	15,978	16,164	11,872	12,122	15,916	16,862
Central America	341	287	312	339	335	335
Caribbean	128	128	128	128	128	128
South America	5,923	7,351	7,124	8,008	8,242	8,242
European Union - 28	621	629	671	485	577	577
Middle East	581	807	640	640	640	640
North Africa	911	906	915	915	915	915
Sub-Saharan Africa	21,513	22,674	22,333	24,545	23,858	24,358
East Asia	1,697	2,476	2,070	2,210	2,020	2,020
South Asia	6,845	7,145	6,175	5,445	5,945	5,945
Southeast Asia	54	54	54	52	55	55
Oceania	1,508	1,935	2,239	1,721	2,100	2,100
Others	42	61	176	208	250	250
Total	56,142	60,617	54,709	56,818	60,981	62,427
Domestic Consumption						
North America	15,601	14,678	12,053	12,977	15,053	15,689
Central America	325	300	320	325	335	335
Caribbean	128	128	128	128	128	128
South America	5,145	5,934	6,110	6,067	6,562	6,562
European Union - 28	630	1,550	760	830	750	750
Middle East	669	916	677	850	800	800
North Africa	1,008	1,057	990	940	940	940
Sub-Saharan Africa	22,671	22,746	22,877	24,707	24,130	24,680
East Asia	3,643	3,779	3,786	4,420	4,230	4,530
South Asia	6,780	6,955	6,255	5,250	5,850	5,850
Southeast Asia	47	61	68	65	70	70
Oceania	1,205	1,405	1,105	805	1,130	1,130
Others	47	30	55	55	105	105
Total	57,899	59,539	55,184	57,419	60,083	61,569
Ending Stocks						
North America	1,408	1,421	1,001	508	1,099	1,117
Central America	43	32	25	34	29	29
South America	365	1,192	348	429	564	564
European Union - 28	24	20	13	13	10	10
Middle East	22	35	44	34	24	24
North Africa	43	57	34	29	24	24
Sub-Saharan Africa	1,199	1,389	1,105	1,238	1,224	1,116
East Asia	397	549	452	522	342	367
South Asia	154	327	123	123	198	198
Oceania	681	361	230	146	166	166
Others	11	9	17	22	17	17
Total	4,347	5,392	3,392	3,098	3,697	3,632

NOTES: Regional definitions appear on last page of this circular. Imports are reported on a trade year basis. All other data are reported using local marketing years.

World Oats Trade
October/September Year, Thousand Metric Tons

	2009/10	2010/11	2011/12	2012/13	2013/14 Aug	2013/14 Sep
TY Exports						
Argentina	1	6	13	5	5	5
Australia	211	211	174	150	150	150
Brazil	4	9	3	5	5	5
Canada	1,539	1,497	1,764	1,500	1,700	1,700
Chile	37	129	106	100	100	100
European Union	215	113	176	150	150	150
Russia	4	1	18	10	10	10
Others	20	4	6	10	10	10
Subtotal	2,031	1,970	2,260	1,930	2,130	2,130
United States	38	37	27	25	45	45
World Total	2,069	2,007	2,287	1,955	2,175	2,175
TY Imports						
Albania	5	5	0	0	0	0
Algeria	1	0	9	10	10	10
Bosnia and Herzegovina	3	5	3	5	5	5
Canada	21	18	11	20	20	20
China	57	58	68	50	50	50
Colombia	2	2	2	5	5	5
Ecuador	11	11	22	15	15	15
European Union	2	4	3	5	5	5
Japan	56	64	54	60	60	60
Mexico	46	103	134	100	100	100
Norway	34	10	49	15	25	25
South Africa	21	15	11	25	25	25
Switzerland	49	49	56	50	50	50
Turkey	0	4	4	5	5	5
Uruguay	4	11	8	5	5	5
Others	3	8	9	0	0	0
Subtotal	315	367	443	370	380	380
Unaccounted	147	172	115	185	195	195
United States	1,607	1,468	1,729	1,400	1,600	1,600
World Total	2,069	2,007	2,287	1,955	2,175	2,175

TY=Trade Year, see Endnotes.

World Oats Production, Consumption, and Stocks
Local Marketing Years, Thousand Metric Tons

	2009/10	2010/11	2011/12	2012/13	2013/14 Aug	2013/14 Sep
Production						
Algeria	96	140	126	125	125	125
Argentina	182	660	345	496	400	400
Australia	1,162	1,128	1,262	1,048	1,200	1,200
Belarus	552	442	448	600	450	450
Brazil	253	379	354	361	380	380
Canada	2,912	2,451	3,158	2,684	3,100	3,100
Chile	381	564	505	680	595	595
China	580	525	600	600	580	580
European Union	8,641	7,500	7,908	7,882	8,058	8,062
Kazakhstan	204	134	258	200	200	200
Mexico	130	111	115	115	115	115
Norway	277	299	231	225	225	225
Russia	5,401	3,218	5,332	4,027	5,000	5,000
Turkey	218	204	210	210	210	210
Ukraine	731	458	506	630	450	450
Others	348	359	343	298	313	313
Subtotal	22,068	18,572	21,701	20,181	21,401	21,405
United States	1,351	1,178	779	929	1,092	1,092
World Total	23,419	19,750	22,480	21,110	22,493	22,497
Total Consumption						
Algeria	96	141	134	135	135	135
Argentina	200	650	350	500	400	400
Australia	975	900	1,100	900	900	900
Belarus	575	475	450	575	475	475
Brazil	250	370	350	350	370	370
Canada	1,767	1,530	1,356	1,394	1,250	1,401
Chile	350	475	375	575	525	525
China	625	625	625	625	625	625
European Union	8,157	7,793	7,672	7,755	7,900	7,900
Kazakhstan	210	130	225	225	175	175
Mexico	215	185	245	215	215	215
Norway	320	295	245	245	245	245
Russia	5,500	3,450	5,000	4,300	5,000	5,000
Turkey	210	210	210	210	210	210
Ukraine	725	475	500	600	475	475
Others	498	525	508	469	469	469
Subtotal	20,742	18,233	19,583	19,122	19,526	19,677
United States	3,011	2,789	2,549	2,781	2,536	2,536
World Total	23,753	21,022	22,132	21,903	22,062	22,213
Ending Stocks						
Australia	126	146	134	132	282	282
Canada	1,162	733	810	511	530	530
China	126	84	127	152	157	157
European Union	1,230	832	905	887	900	904
Norway	20	35	62	57	62	62
Russia	397	167	485	203	192	193
Ukraine	59	40	52	81	47	51
Others	232	227	221	251	234	230
Subtotal	3,352	2,264	2,796	2,274	2,404	2,409
United States	1,166	982	798	527	676	676
World Total	4,518	3,246	3,594	2,801	3,080	3,085

Regional Oats Imports, Production, Consumption, and Stocks

Thousand Metric Tons

	2009/10	2010/11	2011/12	2012/13	Aug 2013/14	Sep 2013/14
TY Imports						
North America	1,674	1,589	1,874	1,520	1,720	1,720
South America	19	24	32	25	25	25
European Union - 28	2	4	3	5	5	5
Other Europe	92	71	110	70	80	80
Former Soviet Union - 12	0	6	7	0	0	0
Middle East	0	4	4	5	5	5
North Africa	1	0	9	10	10	10
Sub-Saharan Africa	21	15	11	25	25	25
East Asia	113	122	122	110	110	110
Oceania	0	0	0	0	0	0
Total	1,922	1,835	2,172	1,770	1,980	1,980
Production						
North America	4,393	3,740	4,052	3,728	4,307	4,307
South America	857	1,644	1,245	1,577	1,418	1,418
European Union - 28	8,641	7,500	7,908	7,882	8,058	8,062
Other Europe	473	480	422	382	382	382
Former Soviet Union - 12	6,893	4,257	6,549	5,463	6,106	6,106
Middle East	218	204	210	210	210	210
North Africa	121	177	156	155	155	155
Sub-Saharan Africa	45	45	45	45	45	45
East Asia	582	527	602	602	582	582
Oceania	1,196	1,176	1,291	1,066	1,230	1,230
Total	23,419	19,750	22,480	21,110	22,493	22,497
Domestic Consumption						
North America	4,993	4,504	4,150	4,390	4,001	4,152
South America	857	1,563	1,143	1,490	1,363	1,363
European Union - 28	8,157	7,793	7,672	7,755	7,900	7,900
Other Europe	577	537	496	460	455	455
Former Soviet Union - 12	7,015	4,535	6,180	5,706	6,131	6,131
Middle East	210	210	210	210	210	210
North Africa	121	178	164	165	165	165
Sub-Saharan Africa	65	65	65	70	70	70
East Asia	680	685	685	690	680	680
Oceania	1,009	948	1,129	918	930	930
Total	23,684	21,018	21,894	21,854	21,905	22,056
Ending Stocks						
North America	2,335	1,720	1,615	1,045	1,213	1,213
South America	95	125	96	132	106	102
European Union - 28	1,230	832	905	887	900	904
Other Europe	49	65	94	86	93	93
Former Soviet Union - 12	517	235	592	334	284	289
Middle East	10	8	12	17	22	22
North Africa	1	1	2	2	2	2
Sub-Saharan Africa	24	19	10	10	10	10
East Asia	131	95	134	156	168	168
Oceania	126	146	134	132	282	282
Total	4,518	3,246	3,594	2,801	3,080	3,085

NOTES: Regional definitions appear on last page of this circular. Imports are reported on a trade year basis. All other data are reported using local marketing years.

World Rye Trade
October/September Year, Thousand Metric Tons

	2009/10	2010/11	2011/12	2012/13	2013/14 Aug	2013/14 Sep
TY Exports						
Belarus	25	150	25	100	100	100
Canada	142	221	159	175	150	125
European Union	134	71	59	100	100	100
Russia	9	22	284	125	100	100
Ukraine	93	2	9	45	25	25
Others	0	3	4	0	0	0
Subtotal	403	469	540	545	475	450
United States	4	3	8	5	5	5
World Total	407	472	548	550	480	455
TY Imports						
Albania	0	0	0	0	0	0
European Union	4	36	302	100	100	100
Israel	9	19	11	25	15	15
Japan	103	101	46	50	75	75
Korea, South	7	11	11	10	10	10
Norway	14	12	11	10	10	10
Switzerland	6	2	2	5	5	5
Others	2	150	8	0	0	0
Subtotal	145	331	391	200	215	215
Unaccounted	133	-7	-17	150	90	65
United States	129	148	174	200	175	175
World Total	407	472	548	550	480	455

TY=Trade Year, see Endnotes.

World Rye Production, Consumption, and Stocks
Local Marketing Years, Thousand Metric Tons

	2009/10	2010/11	2011/12	2012/13	2013/14 Aug	2013/14 Sep
Production						
Belarus	1,227	735	804	1,600	1,500	1,500
Canada	281	237	241	337	200	160
European Union	9,955	7,576	6,900	8,690	9,034	9,036
Kazakhstan	75	42	28	50	50	50
Russia	4,333	1,642	2,967	2,132	3,500	3,500
Turkey	343	366	350	350	350	350
Ukraine	954	464	579	676	650	650
Others	177	159	155	150	130	130
Subtotal	17,345	11,221	12,024	13,985	15,414	15,376
United States	178	189	161	176	223	223
World Total	17,523	11,410	12,185	14,161	15,637	15,599
Total Consumption						
Argentina	55	40	45	40	40	40
Belarus	1,300	650	700	1,400	1,400	1,400
Canada	131	136	101	124	75	75
European Union	9,555	8,204	7,404	8,800	8,800	8,800
Japan	90	105	55	45	75	75
Kazakhstan	75	40	30	50	50	50
Norway	40	45	27	26	26	26
Russia	4,325	1,850	2,850	2,000	3,200	3,200
Turkey	340	350	350	350	350	350
Ukraine	800	650	625	625	650	650
Others	117	114	117	144	104	104
Subtotal	16,898	12,218	12,278	13,717	14,857	14,822
United States	273	330	318	397	388	388
World Total	17,171	12,548	12,596	14,114	15,245	15,210
Ending Stocks						
Belarus	144	79	163	263	263	263
Canada	139	51	25	46	34	16
European Union	1,728	1,013	741	631	865	867
Japan	18	14	5	10	10	10
Russia	308	250	129	128	311	328
Turkey	17	33	34	33	33	33
Ukraine	411	189	132	166	113	141
Others	6	8	6	6	6	6
Subtotal	2,771	1,637	1,235	1,283	1,635	1,664
United States	24	20	11	10	18	18
World Total	2,795	1,657	1,246	1,293	1,653	1,682

Regional Rye Imports, Production, Consumption, and Stocks

Thousand Metric Tons

	2009/10	2010/11	2011/12	2012/13	Aug 2013/14	Sep 2013/14
TY Imports						
North America	129	148	174	200	175	175
South America	0	0	0	0	0	0
European Union - 28	4	36	302	100	100	100
Other Europe	20	14	13	15	15	15
Former Soviet Union - 12	2	150	5	0	0	0
Middle East	9	19	14	25	15	15
Sub-Saharan Africa	0	0	0	0	0	0
East Asia	110	112	57	60	85	85
Oceania	0	0	0	0	0	0
Total	274	479	565	400	390	390
Production						
North America	459	426	402	513	423	383
South America	61	45	50	45	45	45
European Union - 28	9,955	7,576	6,900	8,690	9,034	9,036
Other Europe	79	78	62	62	62	62
Former Soviet Union - 12	6,589	2,883	4,378	4,458	5,700	5,700
Middle East	343	366	350	350	350	350
Sub-Saharan Africa	3	3	3	3	3	3
East Asia	0	0	0	0	0	0
Oceania	34	33	40	40	20	20
Total	17,523	11,410	12,185	14,161	15,637	15,599
Domestic Consumption						
North America	404	466	419	521	463	463
South America	61	45	50	45	45	45
European Union - 28	9,555	8,204	7,404	8,800	8,800	8,800
Other Europe	98	91	75	77	77	77
Former Soviet Union - 12	6,500	3,190	4,205	4,075	5,300	5,300
Middle East	349	369	361	385	365	365
Sub-Saharan Africa	3	3	2	3	3	3
East Asia	97	116	66	55	85	85
Oceania	34	30	40	40	20	20
Total	17,101	12,514	12,622	14,001	15,158	15,158
Ending Stocks						
North America	163	71	36	56	52	34
South America	0	0	0	0	0	0
European Union - 28	1,728	1,013	741	631	865	867
Other Europe	0	0	0	0	0	0
Former Soviet Union - 12	869	526	430	563	693	738
Middle East	17	33	34	33	33	33
Sub-Saharan Africa	0	0	0	0	0	0
East Asia	18	14	5	10	10	10
Oceania	0	0	0	0	0	0
Total	2,795	1,657	1,246	1,293	1,653	1,682

NOTES: Regional definitions appear on last page of this circular. Imports are reported on a trade year basis. All other data are reported using local marketing years.



HISTORICAL DATA SERIES FOR SELECTED REGIONS AND COUNTRIES

CONTENTS

European Union: Grain Supply and Demand	35
China: Grain Supply and Demand	36
Other Europe: Grain Supply and Demand	37
Former Soviet Union: Grain Supply and Demand.....	38
Wheat Supply and Disappearance: Selected Exporters	42
Corn Supply and Disappearance: Selected Exporters.....	44
Barley Supply and Disappearance: Selected Exporters	46
Sorghum Supply and Disappearance: Selected Exporters.....	47
U.S. Grains: Supply and Distribution.....	48
Total Wheat and Coarse Grains: Supply and Demand	49
World Wheat and Coarse Grains: Supply and Demand	50
World Corn and Barley: Supply and Demand	51
World Rice: Supply and Demand	52

European Union: Grain Supply and Demand

Wheat and Coarse Grains Millions of Metric Tons/Hectares

	Area Harvested	Yield	Production	Imports	Exports	Feed Dom. Consumpti	Domestic Consumpti	Ending Stocks
Wheat								
2002/03	26.6	5.0	133.5	10.6	18.2	60.0	125.7	18.8
2003/04	24.5	4.5	111.4	7.4	9.9	52.5	115.8	12.0
2004/05	26.2	5.6	147.7	7.1	14.7	59.3	123.9	28.3
2005/06	26.0	5.1	132.9	6.8	15.7	63.0	128.2	24.0
2006/07	24.7	5.1	125.7	5.2	13.9	60.2	126.2	14.8
2007/08	24.9	4.9	120.8	6.8	12.4	52.4	117.2	12.8
2008/09	26.8	5.7	151.9	7.7	25.4	60.5	127.6	19.4
2009/10	26.0	5.4	139.7	5.4	22.3	57.5	125.6	16.6
2010/11	26.0	5.3	136.7	4.6	23.1	52.5	122.8	11.9
2011/12	25.8	5.3	138.1	7.4	16.7	57.0	126.9	13.8
2012/13	25.8	5.2	133.0	5.3	22.2	51.0	121.0	9.0
2013/14	26.0	5.5	142.9	5.0	23.0	53.2	122.7	11.2
Coarse Grains								
2002/03	33.3	4.5	151.1	4.2	7.6	111.8	147.5	23.1
2003/04	33.2	4.0	134.1	8.2	4.0	111.9	147.7	13.6
2004/05	33.9	5.0	169.1	3.0	4.8	118.9	155.2	25.6
2005/06	33.2	4.5	149.5	2.7	4.3	112.4	150.7	22.7
2006/07	32.4	4.3	140.0	8.1	4.5	112.9	150.6	15.6
2007/08	32.6	4.3	138.7	20.3	4.5	121.6	157.1	13.1
2008/09	34.0	4.8	164.9	3.1	5.7	116.1	154.2	21.3
2009/10	32.9	4.8	157.5	2.9	3.0	114.8	152.4	26.2
2010/11	30.2	4.7	142.8	8.5	6.2	116.9	154.7	16.7
2011/12	30.2	5.0	150.0	6.9	6.5	113.4	151.1	16.1
2012/13	31.3	4.6	145.1	11.9	7.0	115.0	153.6	12.5
2013/14	31.5	5.0	156.2	7.9	7.6	116.1	155.8	13.3
Wheat and Coarse Grains								
2002/03	59.9	4.8	284.6	14.7	25.8	171.9	273.2	41.9
2003/04	57.7	4.3	245.5	15.6	13.9	164.4	263.5	25.6
2004/05	60.1	5.3	316.8	10.0	19.5	178.2	279.1	53.9
2005/06	59.1	4.8	282.3	9.4	20.0	175.4	278.9	46.8
2006/07	57.0	4.7	265.7	13.2	18.5	173.1	276.8	30.4
2007/08	57.5	4.5	259.5	27.1	16.9	174.1	274.2	25.9
2008/09	60.9	5.2	316.8	10.8	31.1	176.6	281.8	40.7
2009/10	58.9	5.0	297.3	8.2	25.3	172.3	278.0	42.8
2010/11	56.2	5.0	279.5	13.1	29.3	169.4	277.5	28.7
2011/12	56.0	5.1	288.1	14.3	23.2	170.4	277.9	29.9
2012/13	57.1	4.9	278.1	17.2	29.2	166.0	274.6	21.4
2013/14	57.6	5.2	299.1	12.9	30.6	169.3	278.5	24.5

China: Grain Supply and Demand

Wheat and Coarse Grains Millions of Metric Tons/Hectares

	Area Harvested	Yield	Production	Imports	Exports	Feed Dom. Consumpti	Domestic Consumpti	Ending Stocks
Wheat								
2002/03	23.9	3.8	90.3	0.4	1.7	6.5	105.2	60.4
2003/04	22.0	3.9	86.5	3.7	2.8	6.0	104.5	43.3
2004/05	21.6	4.3	92.0	6.7	1.2	4.0	102.0	38.8
2005/06	22.8	4.3	97.4	1.1	1.4	3.5	101.5	34.5
2006/07	23.6	4.6	108.5	0.4	2.8	4.0	102.0	38.6
2007/08	23.7	4.6	109.3	0.0	2.8	8.0	106.0	39.1
2008/09	23.6	4.8	112.5	0.5	0.7	8.0	105.5	45.8
2009/10	24.3	4.7	115.1	1.4	0.9	10.0	107.0	54.4
2010/11	24.3	4.7	115.2	0.9	0.9	13.0	110.5	59.1
2011/12	24.3	4.8	117.4	2.9	1.0	24.0	122.5	55.9
2012/13	24.2	5.0	121.0	3.0	1.0	25.0	125.0	53.9
2013/14	24.3	5.0	121.0	9.5	1.0	26.0	126.5	56.9
Coarse Grains								
2002/03	27.8	4.7	130.6	1.8	15.3	98.4	136.3	66.5
2003/04	26.8	4.6	124.0	1.5	7.7	99.1	138.3	45.9
2004/05	28.0	4.9	138.3	2.1	7.6	100.3	141.1	37.6
2005/06	28.8	5.1	147.8	2.3	3.8	103.5	147.1	36.8
2006/07	30.9	5.1	159.1	1.2	5.5	104.9	153.6	38.0
2007/08	31.9	5.0	159.2	1.2	0.9	106.7	157.9	39.5
2008/09	32.2	5.4	172.4	1.7	0.2	109.1	161.2	52.2
2009/10	33.4	5.1	169.8	3.8	0.2	119.1	173.3	52.3
2010/11	34.6	5.3	183.8	2.7	0.2	128.8	188.4	50.1
2011/12	35.6	5.6	199.3	7.9	0.1	132.4	197.0	60.2
2012/13	37.1	5.7	212.4	5.8	0.1	145.5	216.4	61.9
2013/14	37.7	5.8	217.5	10.0	0.1	157.7	233.6	55.6
Wheat and Coarse Grains								
2002/03	51.7	4.3	220.9	2.2	17.1	104.9	241.5	126.8
2003/04	48.8	4.3	210.5	5.3	10.5	105.1	242.8	89.2
2004/05	49.6	4.6	230.2	8.8	8.8	104.3	243.1	76.4
2005/06	51.6	4.7	245.2	3.4	5.2	107.0	248.6	71.3
2006/07	54.5	4.9	267.6	1.5	8.2	108.9	255.6	76.6
2007/08	55.6	4.8	268.5	1.2	3.7	114.7	263.9	78.6
2008/09	55.8	5.1	284.9	2.1	0.9	117.1	266.7	98.0
2009/10	57.6	4.9	284.9	5.2	1.1	129.1	280.3	106.7
2010/11	58.9	5.1	299.0	3.6	1.1	141.8	298.9	109.2
2011/12	59.9	5.3	316.7	10.9	1.1	156.4	319.5	116.2
2012/13	61.3	5.4	333.4	8.7	1.1	170.5	341.4	115.8
2013/14	61.9	5.5	338.5	19.5	1.1	183.7	360.1	112.5

Other Europe: Grain Supply and Demand

Wheat and Coarse Grains Millions of Metric Tons/Hectares

	Area Harvested	Yield	Production	Imports	Exports	Feed Dom. Consumpti	Domestic Consumpti	Ending Stocks
Wheat								
2002/03	1.2	3.3	3.9	1.4	0.4	0.8	4.9	1.1
2003/04	1.0	2.8	2.9	1.4	0.0	0.6	4.6	0.8
2004/05	1.1	4.1	4.6	1.4	0.3	0.8	5.2	1.3
2005/06	1.0	3.8	3.7	1.4	0.2	0.8	5.1	1.2
2006/07	1.0	3.6	3.6	1.5	0.3	0.7	4.6	1.3
2007/08	1.0	3.7	3.6	1.9	0.5	0.9	4.8	1.5
2008/09	0.9	4.2	3.9	1.7	0.4	1.0	5.1	1.7
2009/10	1.0	3.7	3.7	1.7	0.5	0.9	4.9	1.7
2010/11	0.9	3.6	3.2	1.6	0.6	0.8	4.7	1.2
2011/12	0.9	4.0	3.6	1.9	0.5	1.0	4.9	1.3
2012/13	0.9	3.9	3.5	1.7	0.7	0.9	4.7	1.1
2013/14	1.0	4.2	4.2	1.8	0.8	1.1	5.1	1.1
Coarse Grains								
2002/03	2.2	4.1	9.1	0.6	0.4	7.5	8.9	1.4
2003/04	2.2	3.1	6.7	0.7	0.1	7.0	8.1	0.7
2004/05	2.1	4.8	10.4	0.5	0.6	8.3	9.5	1.4
2005/06	2.1	4.6	9.9	0.6	1.3	8.3	9.5	1.2
2006/07	2.1	4.5	9.5	0.8	0.9	8.3	9.4	1.3
2007/08	2.1	3.4	7.2	0.9	0.1	6.9	8.0	1.1
2008/09	2.1	4.5	9.6	0.6	1.5	7.4	8.6	1.2
2009/10	2.0	4.6	9.4	0.7	1.4	7.2	8.5	1.4
2010/11	2.1	4.8	9.8	0.8	2.0	7.1	8.5	1.4
2011/12	2.1	4.5	9.4	0.8	2.4	6.9	8.2	1.0
2012/13	2.1	3.0	6.3	0.8	0.5	5.5	6.7	0.9
2013/14	2.1	4.3	8.9	0.9	1.6	6.7	8.0	1.0
Wheat and Coarse Grains								
2002/03	3.4	3.9	13.0	1.9	0.8	8.4	13.8	2.6
2003/04	3.2	3.0	9.6	2.0	0.1	7.6	12.7	1.4
2004/05	3.3	4.6	15.0	1.9	0.9	9.2	14.7	2.7
2005/06	3.1	4.4	13.7	2.0	1.4	9.1	14.6	2.5
2006/07	3.1	4.2	13.0	2.3	1.2	9.0	14.0	2.5
2007/08	3.1	3.5	10.8	2.7	0.6	7.8	12.8	2.6
2008/09	3.1	4.4	13.5	2.3	1.9	8.4	13.7	2.9
2009/10	3.0	4.3	13.1	2.4	1.9	8.1	13.4	3.0
2010/11	2.9	4.4	13.0	2.4	2.6	7.9	13.2	2.6
2011/12	3.0	4.4	13.0	2.7	2.9	7.9	13.1	2.3
2012/13	3.0	3.3	9.8	2.5	1.2	6.4	11.4	1.9
2013/14	3.1	4.3	13.1	2.6	2.4	7.9	13.1	2.1

Former Soviet Union: Grain Supply and Demand

Wheat and Coarse Grains Millions of Metric Tons/Hectares

	Area Harvested	Yield	Production	Imports	Exports	Feed Dom. Consumpti	Domestic Consumpti	Ending Stocks
Wheat								
2007/08	46.3	2.0	92.4	6.0	21.7	24.2	75.6	14.2
2008/09	50.6	2.3	115.5	6.6	38.2	24.5	76.1	22.0
2009/10	52.6	2.2	114.0	5.4	37.3	26.2	78.2	26.0
2010/11	45.8	1.8	81.1	5.5	13.9	23.9	75.1	23.6
2011/12	49.8	2.3	115.0	8.0	39.8	28.0	79.9	27.0
2012/13	43.9	1.8	77.2	7.5	25.9	20.7	71.5	14.3
2013/14	47.6	2.3	108.0	6.8	37.1	24.9	75.8	16.2
Coarse Grains								
2007/08	27.5	2.0	54.3	1.0	5.3	35.1	50.6	4.8
2008/09	30.3	2.6	79.2	0.7	17.2	41.5	58.1	9.4
2009/10	27.2	2.5	67.7	0.4	15.0	39.1	55.0	7.4
2010/11	21.9	2.2	47.6	1.2	8.8	28.5	41.9	5.5
2011/12	27.1	2.9	78.7	1.0	24.6	38.7	54.4	6.2
2012/13	27.7	2.5	69.0	0.8	20.7	35.7	50.5	4.9
2013/14	29.7	2.9	85.2	0.8	26.7	39.3	56.4	7.8

Former Soviet Union: Grain Supply and Demand (Wheat)

Millions of Tons/Hectares

Country Mktg Year	Area Harvested	Yield	Production	MY Imports	MY Exports	Feed and Residual	Total Consumpti	Ending Stocks
Former Soviet Union - 12								
Kazakhstan								
2010/11	13.1	0.7	9.6	0.0	4.9	1.9	6.2	2.9
2011/12	13.7	1.7	22.7	0.0	11.8	2.6	7.4	6.4
2012/13	12.4	0.8	9.8	0.0	6.7	1.8	6.5	3.0
2013/14	12.5	1.4	17.0	0.0	9.5	2.6	7.4	3.1
Russia								
2010/11	21.8	1.9	41.5	0.1	4.0	16.0	38.6	13.7
2011/12	24.8	2.3	56.2	0.6	21.6	15.5	38.0	10.9
2012/13	21.3	1.8	37.7	1.4	11.3	11.9	33.6	5.2
2013/14	24.0	2.3	54.0	0.5	17.0	14.5	36.5	6.2
Ukraine								
2010/11	6.3	2.7	16.8	0.0	4.3	2.8	11.6	3.3
2011/12	6.7	3.4	22.3	0.1	5.4	6.1	15.0	5.4
2012/13	5.6	2.8	15.8	0.1	7.2	3.3	11.8	2.2
2013/14	6.5	3.4	22.0	0.1	10.0	3.5	11.5	2.8
Uzbekistan								
2010/11	1.4	4.6	6.5	1.6	0.5	1.5	7.7	0.8
2011/12	1.4	4.5	6.3	2.7	0.7	1.7	8.0	1.1
2012/13	1.4	4.8	6.7	1.9	0.4	1.7	8.1	1.2
2013/14	1.4	4.8	6.7	1.9	0.4	1.7	8.2	1.3
Other Former Soviet Union - 12								
2010/11	3.2	2.1	6.6	3.7	0.2	1.7	11.0	2.8
2011/12	3.2	2.3	7.4	4.7	0.2	2.1	11.5	3.2
2012/13	3.1	2.3	7.2	4.1	0.3	2.0	11.5	2.7
2013/14	3.2	2.6	8.3	4.3	0.2	2.6	12.2	2.9
Total Former Soviet Union - 12								
2010/11	45.8	1.8	81.1	5.5	13.9	23.9	75.1	23.6
2011/12	49.8	2.3	115.0	8.0	39.8	28.0	79.9	27.0
2012/13	43.9	1.8	77.2	7.5	25.9	20.7	71.5	14.3
2013/14	47.6	2.3	108.0	6.8	37.1	24.9	75.8	16.2

Former Soviet Union: Grain Supply and Demand (Barley)

Millions of Tons/Hectares

Country Mktg Year	Area Harvested	Yield	Production	MY Imports	MY Exports	Feed and Residual	Total Consumpti	Ending Stocks
Former Soviet Union - 12								
Kazakhstan								
2010/11	1.3	1.0	1.3	0.1	0.2	1.2	1.5	0.1
2011/12	1.5	1.7	2.6	0.0	0.7	1.5	1.8	0.2
2012/13	1.6	0.9	1.5	0.0	0.2	1.2	1.4	0.1
2013/14	1.8	1.2	2.2	0.0	0.5	1.4	1.7	0.2
Russia								
2010/11	5.0	1.7	8.4	0.4	0.3	5.5	9.5	1.4
2011/12	7.7	2.2	16.9	0.4	3.5	9.8	14.3	0.8
2012/13	7.6	1.8	14.0	0.3	2.2	7.7	12.1	0.7
2013/14	8.2	2.1	17.0	0.3	3.3	8.5	13.3	1.4
Ukraine								
2010/11	4.3	2.0	8.5	0.0	2.8	4.4	6.0	0.8
2011/12	3.7	2.5	9.1	0.0	2.5	4.7	6.3	1.2
2012/13	3.3	2.1	6.9	0.0	2.1	3.4	5.0	1.0
2013/14	3.3	2.3	7.5	0.0	2.2	3.5	5.2	1.1
Uzbekistan								
2010/11	0.1	3.2	0.2	0.0	0.0	0.2	0.3	0.0
2011/12	0.1	3.2	0.2	0.1	0.0	0.3	0.3	0.0
2012/13	0.1	3.2	0.2	0.1	0.0	0.2	0.3	0.0
2013/14	0.1	3.2	0.2	0.0	0.0	0.2	0.3	0.0
Other Former Soviet Union - 12								
2010/11	1.4	2.4	3.3	0.1	0.0	2.6	3.4	0.5
2011/12	1.4	2.5	3.4	0.2	0.0	2.7	3.6	0.5
2012/13	1.3	2.5	3.4	0.1	0.0	2.7	3.5	0.5
2013/14	1.2	2.5	3.1	0.2	0.0	2.5	3.4	0.4
Total Former Soviet Union - 12								
2010/11	12.1	1.8	21.7	0.7	3.3	13.9	20.7	2.8
2011/12	14.3	2.3	32.2	0.7	6.7	19.0	26.3	2.7
2012/13	13.9	1.9	26.0	0.5	4.6	15.2	22.3	2.3
2013/14	14.6	2.1	30.0	0.5	6.0	16.1	23.8	3.1

Former Soviet Union: Grain Supply and Demand (Corn)

Millions of Tons/Hectares

Country Mktg Year	Area Harvested	Yield	Production	MY Imports	MY Exports	Feed and Residual	Total Consumpti	Ending Stocks
Former Soviet Union - 12								
Kazakhstan								
2010/11	0.1	4.8	0.5	0.0	0.0	0.4	0.5	0.1
2011/12	0.1	5.0	0.5	0.0	0.0	0.4	0.5	0.0
2012/13	0.1	5.0	0.5	0.0	0.0	0.4	0.5	0.0
2013/14	0.1	5.0	0.5	0.0	0.0	0.4	0.5	0.0
Russia								
2010/11	1.0	3.0	3.1	0.1	0.0	2.8	3.2	0.1
2011/12	1.6	4.3	7.0	0.0	2.0	4.0	4.7	0.4
2012/13	1.9	4.2	8.2	0.1	2.0	5.5	6.3	0.3
2013/14	2.2	4.2	9.0	0.1	2.0	6.1	7.0	0.4
Ukraine								
2010/11	2.6	4.5	11.9	0.0	5.0	5.4	6.5	1.1
2011/12	3.5	6.4	22.8	0.0	15.2	6.5	7.8	1.1
2012/13	4.4	4.8	20.9	0.1	13.3	6.6	7.9	0.8
2013/14	4.8	6.0	29.0	0.1	18.0	7.5	9.1	2.8
Uzbekistan								
2010/11	0.0	4.6	0.2	0.0	0.0	0.2	0.2	0.0
2011/12	0.0	4.6	0.2	0.0	0.0	0.2	0.2	0.0
2012/13	0.0	3.4	0.1	0.0	0.0	0.1	0.1	0.0
2013/14	0.0	3.4	0.1	0.0	0.0	0.1	0.1	0.0
Other Former Soviet Union - 12								
2010/11	0.8	3.6	2.8	0.2	0.2	2.6	2.9	0.6
2011/12	0.9	4.0	3.7	0.2	0.3	2.9	3.3	1.0
2012/13	0.8	3.4	2.6	0.2	0.4	2.7	3.1	0.4
2013/14	0.9	4.0	3.7	0.2	0.3	3.2	3.6	0.5
Total Former Soviet Union - 12								
2010/11	4.6	4.0	18.4	0.3	5.2	11.3	13.2	1.9
2011/12	6.2	5.5	34.1	0.3	17.5	14.0	16.4	2.4
2012/13	7.2	4.5	32.4	0.3	15.7	15.3	17.9	1.6
2013/14	8.0	5.3	42.4	0.3	20.3	17.3	20.3	3.7

Wheat Supply and Disappearance: Selected Exporters
Million Metric Tons/Hectares

Country Mktg Year	Area Harvested	Yield	Production	MY Imports	MY Exports	Feed and Residual	Total Consumpti	Ending Stocks
Wheat Competitors								
Argentina								
2005/06	5.5	2.5	13.8	0.0	9.6	0.0	5.1	0.4
2006/07	6.2	2.6	16.3	0.0	10.7	0.1	5.4	0.6
2007/08	6.6	2.8	18.6	0.0	11.2	0.1	5.7	2.4
2008/09	5.3	2.1	11.0	0.0	6.8	0.0	5.3	1.3
2009/10	4.0	3.0	12.0	0.0	5.1	0.0	5.8	2.3
2010/11	4.8	3.6	17.2	0.0	9.5	0.1	6.0	4.1
2011/12	5.2	3.0	15.5	0.0	12.9	0.1	6.0	0.7
2012/13	3.5	2.9	10.0	0.0	4.0	0.1	6.0	0.7
2013/14	3.9	3.1	12.0	0.0	6.0	0.1	6.1	0.7
Australia								
2005/06	12.5	2.0	25.2	0.1	16.0	3.7	6.6	9.4
2006/07	11.8	0.9	10.8	0.1	8.7	4.5	7.4	4.2
2007/08	12.6	1.1	13.6	0.1	7.5	3.5	6.6	3.7
2008/09	13.5	1.6	21.4	0.1	14.7	4.2	7.4	3.1
2009/10	13.9	1.6	21.8	0.1	14.8	1.9	5.2	5.1
2010/11	13.5	2.0	27.4	0.1	18.6	2.5	5.8	8.2
2011/12	13.9	2.2	29.9	0.1	24.7	3.2	6.5	7.0
2012/13	13.2	1.7	22.1	0.1	19.0	3.2	6.5	3.7
2013/14	13.7	1.9	25.5	0.1	19.0	3.2	6.6	3.8
Canada								
2005/06	9.4	2.7	25.7	0.3	16.0	3.8	8.2	9.7
2006/07	9.7	2.6	25.3	0.3	19.4	4.5	9.0	6.9
2007/08	8.6	2.3	20.1	0.4	16.1	2.2	6.9	4.4
2008/09	10.0	2.9	28.6	0.4	18.9	3.1	7.8	6.6
2009/10	9.7	2.8	27.0	0.4	19.0	2.5	7.2	7.7
2010/11	8.3	2.8	23.3	0.4	16.6	2.7	7.6	7.4
2011/12	8.6	3.0	25.3	0.5	17.4	4.7	9.9	5.9
2012/13	9.5	2.9	27.2	0.5	19.0	4.4	9.6	5.1
2013/14	10.5	3.0	31.5	0.5	20.5	4.8	10.0	6.5
Total Wheat Competitors								
2005/06	27.3	2.4	64.7	0.4	41.7	7.5	19.9	19.4
2006/07	27.7	1.9	52.4	0.4	38.9	9.1	21.7	11.6
2007/08	27.8	1.9	52.3	0.5	34.8	5.8	19.1	10.5
2008/09	28.8	2.1	61.0	0.5	40.4	7.3	20.6	11.0

Wheat Supply and Disappearance: Selected Exporters (Continued)

Million Metric Tons/Hectares

Country Mktg Year	Area Harvested	Yield	Production	MY Imports	MY Exports	Feed and Residual	Total Consumpti	Ending Stocks
2009/10	27.5	2.2	60.8	0.5	39.0	4.4	18.2	15.1
2010/11	26.6	2.5	67.9	0.6	44.7	5.3	19.3	19.6
2011/12	27.6	2.6	70.7	0.6	54.9	8.0	22.3	13.7
2012/13	26.2	2.3	59.3	0.6	42.0	7.7	22.1	9.5
2013/14	28.1	2.5	69.0	0.6	45.5	8.1	22.6	11.0
India								
2005/06	26.5	2.6	68.6	0.0	0.8	2.2	70.0	2.0
2006/07	26.4	2.6	69.4	6.7	0.1	2.3	73.5	4.5
2007/08	28.0	2.7	75.8	2.0	0.0	2.5	76.4	5.8
2008/09	28.2	2.8	78.6	0.0	0.0	2.5	70.9	13.4
2009/10	27.8	2.9	80.7	0.2	0.1	2.8	78.2	16.1
2010/11	28.5	2.8	80.8	0.3	0.1	2.9	81.8	15.4
2011/12	29.1	3.0	86.9	0.0	0.9	3.1	81.4	20.0
2012/13	29.9	3.2	94.9	0.0	6.8	3.4	83.8	24.2
2013/14	29.4	3.1	92.5	0.0	5.5	3.5	91.0	20.2
Turkey								
2005/06	8.6	2.2	18.5	0.1	3.2	0.4	16.1	1.1
2006/07	8.6	2.0	17.5	1.7	2.4	0.8	16.7	1.3
2007/08	7.7	2.0	15.5	2.2	1.7	0.8	16.8	0.4
2008/09	7.7	2.2	16.8	3.5	2.2	0.7	16.9	1.5
2009/10	7.8	2.4	18.5	3.2	4.3	0.8	17.1	1.8
2010/11	8.0	2.1	17.0	3.7	3.0	0.8	17.3	2.2
2011/12	7.7	2.4	18.8	3.8	3.7	1.4	18.1	3.1
2012/13	7.8	2.0	15.5	3.6	3.4	0.7	17.5	1.2
2013/14	7.7	2.3	18.0	3.5	3.5	0.9	17.8	1.5

Corn Supply and Disappearance: Selected Exporters
Million Metric Tons/Hectares

Country Mktg Year	Area Harvested	Yield	Production	MY Imports	MY Exports	Feed and Residual	Total Consumpti	Ending Stocks
Argentina								
2005/06	2.4	6.5	15.8	0.0	9.5	4.4	6.2	1.3
2006/07	2.8	8.0	22.5	0.0	15.3	4.8	6.7	1.8
2007/08	3.4	6.5	22.0	0.0	14.8	4.9	6.8	2.2
2008/09	2.5	6.2	15.5	0.0	10.3	4.5	6.4	1.0
2009/10	3.0	8.3	25.0	0.0	16.5	5.0	6.9	2.6
2010/11	3.8	6.7	25.2	0.0	16.3	5.3	7.3	4.1
2011/12	3.6	5.8	21.0	0.0	17.1	4.8	7.0	1.0
2012/13	4.0	6.6	26.5	0.0	19.5	4.8	7.3	0.7
2013/14	3.4	7.7	26.0	0.0	18.0	5.0	7.8	0.9
Brazil								
2005/06	12.9	3.2	41.7	1.1	4.5	33.0	39.5	3.0
2006/07	14.0	3.6	51.0	1.4	10.8	34.5	41.0	3.6
2007/08	14.7	4.0	58.6	0.7	7.8	36.0	42.5	12.6
2008/09	14.1	3.6	51.0	1.1	7.1	38.5	45.5	12.1
2009/10	12.9	4.3	56.1	0.4	11.6	40.0	47.0	10.0
2010/11	13.8	4.2	57.4	0.8	8.4	42.5	49.5	10.3
2011/12	15.2	4.8	73.0	0.8	24.3	43.0	50.5	9.2
2012/13	15.9	5.1	81.0	0.8	24.5	45.0	53.0	13.5
2013/14	15.5	4.6	72.0	0.8	18.0	46.0	54.0	14.3
China								
2005/06	26.4	5.3	139.4	0.1	3.7	101.0	137.0	35.3
2006/07	28.5	5.3	151.6	0.0	5.3	104.0	145.0	36.6
2007/08	29.5	5.2	152.3	0.0	0.5	106.0	150.0	38.4
2008/09	29.9	5.6	165.9	0.0	0.2	108.0	153.0	51.2
2009/10	31.2	5.3	164.0	1.3	0.2	118.0	165.0	51.3
2010/11	32.5	5.5	177.2	1.0	0.1	128.0	180.0	49.4
2011/12	33.5	5.7	192.8	5.2	0.1	131.0	188.0	59.3
2012/13	35.0	5.9	205.6	3.0	0.1	144.0	207.0	60.9
2013/14	35.6	5.9	211.0	7.0	0.1	156.0	224.0	54.8
South Africa								
2005/06	2.0	3.4	6.9	0.9	0.5	4.0	8.2	2.3
2006/07	2.9	2.5	7.3	1.1	0.5	4.4	8.6	1.7
2007/08	3.3	4.0	13.2	0.0	2.2	4.3	9.6	3.1
2008/09	2.9	4.3	12.6	0.0	1.7	4.3	9.9	4.1
2009/10	3.3	4.1	13.4	0.0	2.1	4.6	10.3	5.2
2010/11	2.9	3.8	10.9	0.4	2.4	5.0	10.7	3.4

Corn Supply and Disappearance: Selected Exporters (Continued)

Million Metric Tons/Hectares

Country Mktg Year	Area Harvested	Yield	Production	MY Imports	MY Exports	Feed and Residual	Total Consumpti	Ending Stocks
2011/12	3.1	4.1	12.8	0.0	1.8	5.0	10.7	3.7
2012/13	3.3	3.8	12.2	0.0	1.9	5.0	10.8	3.2
2013/14	3.2	4.1	13.0	0.0	2.0	5.1	11.0	3.2
Total Corn Competitors								
2005/06	43.7	4.7	203.8	2.1	18.3	142.4	190.9	41.8
2006/07	48.2	4.8	232.4	2.6	31.9	147.7	201.3	43.6
2007/08	50.9	4.8	246.1	0.8	25.3	151.2	208.9	56.3
2008/09	49.4	5.0	245.0	1.2	19.3	155.3	214.8	68.4
2009/10	50.4	5.1	258.5	1.7	30.3	167.6	229.2	69.0
2010/11	52.9	5.1	270.8	2.2	27.3	180.8	247.5	67.2
2011/12	55.5	5.4	299.5	6.0	43.4	183.8	256.2	73.2
2012/13	58.1	5.6	325.3	3.8	46.0	198.8	278.1	78.3
2013/14	57.7	5.6	322.0	7.8	38.1	212.1	296.8	73.3

Barley Supply and Disappearance: Selected Exporters
Million Metric Tons/Hectares

Country Mktg Year	Area Harvested	Yield	Production	MY Imports	MY Exports	Feed and Residual	Total Consumpti	Ending Stocks
Australia								
2005/06	4.4	2.2	9.5	0.0	5.3	2.5	3.5	2.6
2006/07	4.2	1.0	4.3	0.0	1.9	2.9	4.0	1.0
2007/08	4.9	1.5	7.2	0.0	3.4	2.1	3.1	1.7
2008/09	5.0	1.6	8.0	0.0	3.2	2.9	4.0	2.4
2009/10	4.4	1.8	7.9	0.0	3.9	3.3	4.5	1.9
2010/11	3.7	2.2	8.0	0.0	4.7	3.0	4.2	1.0
2011/12	3.7	2.2	8.2	0.0	5.4	2.1	3.3	0.5
2012/13	3.7	1.8	6.8	0.0	3.8	1.9	3.1	0.4
2013/14	3.8	2.0	7.4	0.0	4.1	2.1	3.3	0.4
Canada								
2005/06	3.6	3.2	11.7	0.0	2.2	8.4	9.6	3.3
2006/07	3.2	3.0	9.6	0.0	1.2	8.8	10.2	1.5
2007/08	4.0	2.8	10.9	0.1	3.0	6.4	7.8	1.6
2008/09	3.5	3.4	11.8	0.0	1.5	7.6	8.9	3.0
2009/10	2.9	3.3	9.5	0.0	1.3	7.5	8.7	2.5
2010/11	2.4	3.2	7.6	0.0	1.2	6.3	7.5	1.5
2011/12	2.4	3.3	7.9	0.0	1.3	5.7	6.9	1.2
2012/13	2.8	2.9	8.0	0.0	1.4	5.7	6.8	1.0
2013/14	2.6	3.5	9.0	0.0	1.4	5.9	7.1	1.5
European Union								
2005/06	13.8	4.0	54.9	0.1	3.3	38.4	54.3	8.5
2006/07	13.9	4.1	56.4	0.2	3.4	38.9	55.9	5.8
2007/08	13.9	4.2	57.8	0.3	3.8	38.9	54.5	5.7
2008/09	14.6	4.5	65.8	0.3	3.6	41.7	57.3	11.0
2009/10	14.0	4.5	62.4	0.1	1.1	41.7	56.8	15.6
2010/11	12.5	4.3	53.7	0.2	4.9	41.3	56.6	7.9
2011/12	12.0	4.3	52.0	0.4	3.0	36.2	51.2	6.2
2012/13	12.5	4.4	54.6	0.1	4.8	36.7	51.8	4.2
2013/14	12.4	4.7	58.1	0.1	4.8	37.5	52.7	4.9

Sorghum Supply and Disappearance: Selected Exporters
Million Metric Tons/Hectares

Country Mktg Year	Area Harvested	Yield	Production	MY Imports	MY Exports	Feed and Residual	Total Consumpti	Ending Stocks
Argentina								
2005/06	0.5	4.7	2.3	0.0	0.2	2.1	2.3	0.2
2006/07	0.6	4.7	2.8	0.0	1.1	1.5	1.7	0.2
2007/08	0.6	4.7	2.9	0.0	1.2	1.0	1.2	0.7
2008/09	0.5	3.7	1.7	0.0	1.1	1.0	1.1	0.2
2009/10	0.8	4.8	3.6	0.0	1.8	1.7	1.9	0.2
2010/11	1.0	4.4	4.4	0.0	1.7	1.7	1.9	1.0
2011/12	1.0	4.2	4.2	0.0	3.1	1.7	1.9	0.2
2012/13	1.2	4.5	5.2	0.0	3.1	1.8	2.1	0.2
2013/14	1.2	4.5	5.4	0.0	3.0	2.0	2.3	0.3
Australia								
2005/06	0.8	2.5	1.9	0.0	0.1	1.9	1.9	0.0
2006/07	0.6	2.1	1.3	0.0	0.1	1.2	1.2	0.0
2007/08	0.9	4.0	3.8	0.0	0.8	2.2	2.2	0.8
2008/09	0.8	3.5	2.7	0.0	1.0	1.8	1.8	0.7
2009/10	0.5	3.0	1.5	0.0	0.3	1.2	1.2	0.7
2010/11	0.6	3.1	1.9	0.0	0.9	1.4	1.4	0.4
2011/12	0.7	3.4	2.2	0.0	1.3	1.1	1.1	0.2
2012/13	0.6	3.0	1.7	0.0	1.0	0.8	0.8	0.1
2013/14	0.7	3.2	2.1	0.0	1.0	1.1	1.1	0.2

U.S. Grains Supply and Distribution: Wheat, Corn, Sorghum, Barley, Oats, Rye, and Rice (Working Statistics)

Thousand Metric Tons/Hectares

	Area Harvested	Yield	Rough Production	Production	Imports	TY Imports	Exports	TY Exports	Feed Dom. Consumption	Domestic Consumption	Ending Stocks
Wheat											
2011/12	18,496	3	nr	54,413	3,050	3,034	28,606	28,142	4,417	32,112	20,211
2012/13	19,826	3	nr	61,755	3,341	3,443	27,416	27,695	10,624	38,341	19,550
2013/14	18,506	3	nr	57,536	3,810	3,700	29,937	30,000	7,620	35,680	15,279
Corn											
2011/12	33,989	9	nr	313,949	746	765	39,182	38,428	115,505	279,035	25,122
2012/13	35,360	8	nr	273,832	4,115	4,100	18,670	17,500	113,670	267,601	16,798
2013/14	36,072	10	nr	351,637	635	650	31,116	32,500	129,546	290,844	47,110
Sorghum											
2011/12	1,590	3	nr	5,447	3	3	1,611	1,549	1,793	3,953	583
2012/13	2,005	3	nr	6,272	267	275	1,905	2,000	2,337	4,877	340
2013/14	2,463	4	nr	10,062	0	0	4,064	4,000	2,540	5,589	749
Barley											
2011/12	906	4	nr	3,392	354	469	193	179	818	4,192	1,306
2012/13	1,313	4	nr	4,796	507	500	193	150	1,294	4,668	1,748
2013/14	1,244	4	nr	4,736	544	550	218	200	1,633	5,006	1,804
Oats											
2011/12	380	2	nr	779	1,621	1,729	35	27	1,445	2,549	798
2012/13	423	2	nr	929	1,600	1,400	19	25	1,678	2,781	527
2013/14	484	2	nr	1,092	1,637	1,600	44	45	1,420	2,536	676
Rye											
2011/12	98	2	nr	161	152	174	4	8	81	318	11
2012/13	100	2	nr	176	228	200	8	5	159	397	10
2013/14	130	2	nr	223	178	175	5	5	148	388	18
Rice, Milled											
2011/12	1,059	8	8,388	5,866	615	640	3,199	3,305	nr	3,493	1,303
2012/13	1,084	8	9,049	6,334	669	700	3,400	3,400	nr	3,750	1,156
2013/14	997	8	8,394	5,897	714	725	3,123	3,150	nr	3,688	956

Notes: Wheat Trade Year (TY) statistics are on July/June years. Barley, corn, sorghum, rye and oats Trade Year (TY) statistics are on Oct/Sept years. Rice Trade Year (TY) statistics are for the subsequent calendar year; 'Imports' and 'Exports' columns contain data on the local marketing year: wheat, barley, oats and rye are June/May; corn and sorghum are Sept/Aug; rice is Aug/July.

Total Wheat and Coarse Grains: Supply and Demand

Millions of Metric Tons/Hectares

	Area Harvested	Yield	Production	TY Exports	Feed Dom. Consumpti	Domestic Consumpti	Ending Stocks
Wheat and Coarse Grains							
1984/85	567.0	2.3	1,315.0	203.6	611.3	1,253.5	340.0
1985/86	570.9	2.3	1,328.5	165.2	614.5	1,247.9	420.6
1986/87	565.6	2.4	1,348.0	174.7	645.7	1,299.4	469.2
1987/88	544.8	2.4	1,285.9	202.2	656.5	1,329.8	423.1
1988/89	542.4	2.2	1,218.1	203.3	619.4	1,302.0	339.3
1989/90	548.9	2.4	1,327.4	208.9	644.4	1,346.2	320.5
1990/91	546.4	2.6	1,417.6	190.1	668.7	1,369.5	368.7
1991/92	544.1	2.5	1,355.7	207.5	651.4	1,364.9	359.5
1992/93	546.5	2.6	1,431.6	205.2	662.9	1,389.1	399.2
1993/94	536.7	2.5	1,356.1	188.2	655.7	1,389.3	366.1
1994/95	534.7	2.6	1,392.5	200.1	668.9	1,395.8	362.7
1995/96	527.7	2.5	1,338.5	187.5	640.1	1,381.8	319.4
1996/97	546.6	2.7	1,490.3	198.4	672.9	1,442.6	367.1
1997/98	535.9	2.8	1,491.6	190.3	683.3	1,444.3	414.4
1998/99	521.0	2.8	1,481.8	198.7	682.6	1,448.2	448.0
1999/00	506.9	2.9	1,465.3	214.0	688.3	1,468.2	444.5
2000/01	510.2	2.8	1,447.2	205.0	698.1	1,472.3	419.4
2001/02	512.6	2.9	1,480.6	208.4	711.3	1,496.2	403.9
2002/03	503.1	2.9	1,443.7	209.3	708.8	1,506.2	341.3
2003/04	511.6	2.9	1,471.6	205.8	714.5	1,534.5	278.5
2004/05	515.4	3.2	1,643.1	214.5	754.2	1,586.0	335.5
2005/06	517.0	3.1	1,599.8	222.5	754.4	1,616.1	319.1
2006/07	517.1	3.1	1,584.4	229.9	744.9	1,628.2	275.4
2007/08	534.2	3.2	1,691.7	244.9	759.1	1,673.9	293.2
2008/09	539.5	3.3	1,792.8	253.6	770.5	1,722.9	363.2
2009/10	533.2	3.4	1,802.9	254.2	778.3	1,767.2	398.9
2010/11	523.5	3.3	1,748.4	250.0	770.9	1,782.9	364.4
2011/12	535.2	3.5	1,847.7	287.3	803.0	1,847.9	364.2
2012/13	533.6	3.3	1,783.0	275.0	805.5	1,822.5	324.7
2013/14	543.0	3.6	1,954.4	286.7	855.8	1,919.4	359.7

Notes: Wheat and coarse grains trade data are on July/June years through 1975/76. From 1976/77 to the present, coarse grains data are on an Oct/Sept trade year.

World Wheat and Coarse Grains: Supply and Demand

Millions of Metric Tons/Hectares

	Area Harvested	Yield	Production	TY Exports	Feed Dom. Consumpti	Domestic Consumpti	Ending Stocks
Wheat							
1991/92	222.8	2.4	543.5	111.4	115.1	551.8	163.2
1992/93	222.1	2.5	562.6	113.2	111.6	547.7	177.9
1993/94	221.0	2.5	558.5	101.7	109.6	553.0	183.4
1994/95	213.3	2.5	523.0	101.5	101.4	542.1	164.2
1995/96	216.7	2.5	537.5	99.2	95.2	546.1	155.7
1996/97	227.1	2.6	581.3	104.0	99.6	573.4	163.7
1997/98	226.4	2.7	610.2	104.5	103.8	576.6	197.3
1998/99	219.2	2.7	590.4	102.0	106.8	578.2	209.5
1999/00	212.5	2.8	586.8	111.9	102.8	585.4	210.9
2000/01	215.6	2.7	583.2	102.2	109.0	586.8	207.3
2001/02	214.5	2.7	583.8	108.0	109.9	586.8	204.3
2002/03	213.5	2.7	569.6	106.6	113.9	604.4	169.5
2003/04	207.7	2.7	555.4	103.5	99.2	588.8	136.0
2004/05	215.9	2.9	626.7	113.2	108.9	606.3	156.5
2005/06	217.7	2.8	618.8	114.2	115.2	621.6	153.7
2006/07	211.6	2.8	596.5	115.4	110.3	615.9	134.3
2007/08	217.1	2.8	612.6	116.2	102.7	618.1	128.9
2008/09	224.2	3.0	683.5	143.2	121.5	643.5	168.9
2009/10	225.4	3.0	687.0	135.4	120.9	654.2	201.8
2010/11	217.1	3.0	652.4	134.0	116.0	655.2	199.0
2011/12	221.2	3.2	697.2	153.8	146.5	696.8	199.3
2012/13	215.8	3.0	655.2	147.0	137.0	680.7	173.9
2013/14	220.9	3.2	708.9	152.4	140.8	706.5	176.3
Coarse Grains							
1991/92	321.3	2.5	812.2	96.2	536.3	813.1	196.3
1992/93	324.4	2.7	868.9	91.9	551.3	841.4	221.3
1993/94	315.6	2.5	797.7	86.5	546.1	836.3	182.7
1994/95	321.3	2.7	869.5	98.6	567.6	853.7	198.5
1995/96	311.0	2.6	801.0	88.3	544.9	835.8	163.7
1996/97	319.5	2.8	908.9	94.4	573.2	869.2	203.5
1997/98	309.5	2.8	881.4	85.8	579.5	867.7	217.1
1998/99	301.8	3.0	891.4	96.7	575.8	870.0	238.5
1999/00	294.4	3.0	878.5	102.1	585.5	882.8	233.7
2000/01	294.7	2.9	864.0	102.8	589.0	885.4	212.2
2001/02	298.1	3.0	896.8	100.4	601.4	909.4	199.5
2002/03	289.6	3.0	874.1	102.7	594.9	901.8	171.8
2003/04	303.9	3.0	916.3	102.3	615.3	945.7	142.4
2004/05	299.5	3.4	1,016.4	101.2	645.3	979.8	179.0
2005/06	299.3	3.3	981.0	108.3	639.2	994.6	165.4
2006/07	305.5	3.2	987.9	114.5	634.6	1,012.2	141.1
2007/08	317.1	3.4	1,079.1	128.7	656.4	1,055.8	164.4
2008/09	315.2	3.5	1,109.3	110.4	649.0	1,079.4	194.2
2009/10	307.8	3.6	1,115.9	118.8	657.4	1,113.0	197.1
2010/11	306.4	3.6	1,096.0	116.0	654.9	1,127.7	165.4
2011/12	314.0	3.7	1,150.6	133.4	656.5	1,151.1	164.9
2012/13	317.8	3.5	1,127.8	128.0	668.6	1,141.8	150.8
2013/14	322.1	3.9	1,245.5	134.3	715.0	1,212.9	183.4

Notes: Wheat and coarse grains trade data are on July/June years through 1975/76. From 1976/77 to the present, coarse grains data are on an Oct/Sept trade year.

World Corn and Barley: Supply and Demand

Millions of Metric Tons/Hectares

	Area Harvested	Yield	Production	TY Exports	Feed Dom. Consumpti	Domestic Consumpti	Ending Stocks
Corn							
1991/92	132.5	3.7	493.0	63.0	334.4	493.3	141.0
1992/93	133.1	4.0	535.6	62.6	348.7	512.1	162.7
1993/94	130.7	3.6	475.8	57.4	342.0	509.0	129.4
1994/95	135.2	4.1	559.3	71.9	371.6	535.4	153.3
1995/96	135.0	3.8	516.4	64.8	365.3	536.4	133.3
1996/97	141.5	4.2	592.8	66.7	387.9	559.8	166.3
1997/98	136.3	4.2	574.4	63.1	400.6	573.5	167.2
1998/99	138.9	4.4	605.8	68.7	404.3	581.6	191.4
1999/00	139.0	4.4	608.4	72.1	422.5	605.4	194.4
2000/01	137.1	4.3	591.9	75.9	427.4	611.0	175.3
2001/02	137.4	4.4	601.6	72.7	436.3	625.5	151.4
2002/03	137.6	4.4	603.9	76.8	433.3	628.6	126.8
2003/04	141.8	4.4	627.5	79.0	445.8	649.8	104.5
2004/05	145.7	4.9	716.2	76.0	475.7	690.0	130.7
2005/06	145.3	4.8	700.1	82.5	478.1	706.8	123.9
2006/07	150.2	4.8	715.8	91.3	478.5	729.4	110.4
2007/08	160.4	5.0	795.1	98.2	498.3	774.1	131.5
2008/09	158.7	5.0	800.6	83.6	481.5	784.7	147.3
2009/10	158.9	5.2	824.9	92.7	490.5	826.5	145.7
2010/11	164.6	5.1	833.3	91.7	501.4	850.7	128.3
2011/12	170.4	5.2	884.4	103.8	505.6	880.8	131.8
2012/13	175.5	4.9	860.1	99.2	518.3	869.3	122.6
2013/14	176.8	5.4	956.7	104.5	556.9	927.8	151.4
Barley							
1991/92	75.9	2.2	169.9	19.4	120.3	166.5	34.9
1992/93	72.6	2.3	166.3	16.4	119.0	165.6	35.0
1993/94	73.2	2.3	169.0	18.8	123.8	169.1	34.9
1994/95	72.2	2.2	160.7	15.3	120.9	165.6	30.0
1995/96	66.4	2.1	141.2	13.4	107.8	150.7	20.5
1996/97	64.2	2.4	153.1	17.9	106.3	149.5	24.1
1997/98	63.8	2.4	153.9	12.8	104.1	145.8	32.2
1998/99	56.6	2.4	136.0	17.8	99.5	139.3	29.0
1999/00	52.1	2.4	127.4	17.8	94.0	132.5	23.9
2000/01	52.9	2.5	133.0	16.3	94.6	134.3	22.6
2001/02	55.7	2.6	143.5	17.2	95.5	136.9	29.2
2002/03	54.8	2.5	134.3	16.3	94.8	135.9	27.5
2003/04	58.3	2.4	142.1	14.8	102.6	146.3	23.4
2004/05	57.5	2.6	152.1	17.0	100.1	142.5	33.0
2005/06	55.3	2.5	136.1	17.4	97.4	141.0	28.1
2006/07	56.4	2.4	136.9	14.6	98.2	143.6	21.4
2007/08	55.8	2.4	132.9	18.5	91.0	133.8	20.5
2008/09	55.2	2.8	155.0	18.2	100.4	144.1	31.5
2009/10	54.2	2.8	150.9	17.3	101.3	145.0	37.3
2010/11	47.2	2.6	122.7	15.2	91.2	135.9	24.1
2011/12	49.6	2.7	134.3	21.4	92.4	135.8	22.7
2012/13	50.6	2.6	129.3	19.1	89.2	132.3	19.7
2013/14	50.9	2.8	141.7	18.8	93.3	139.0	22.4

Notes: Coarse grains trade data are on July/June years through 1975/76. From 1976/77 to the present, coarse grains data are on an Oct/Sept trade year.

World Rice: Supply and Demand

Millions of Metric Tons/Hectares

	Area Harvested	Yield	Rough Production	Production	TY Exports	Domestic Consumpti	Ending Stocks
Rice, Milled							
1984/85	144.1	3.2	464.9	316.8	11.0	298.4	87.7
1985/86	144.7	3.2	467.3	318.0	11.8	308.0	97.7
1986/87	144.8	3.2	464.6	316.1	12.9	310.4	103.3
1987/88	141.4	3.3	464.8	315.1	11.4	313.1	105.3
1988/89	146.6	3.3	490.8	332.1	14.0	325.7	111.7
1989/90	147.8	3.5	510.3	345.2	11.7	336.3	120.6
1990/91	147.0	3.5	519.4	351.4	12.3	345.3	126.7
1991/92	147.5	3.5	522.8	353.2	14.4	353.2	126.7
1992/93	146.5	3.6	524.2	354.0	14.9	357.5	123.2
1993/94	145.3	3.6	526.1	354.7	16.6	358.9	119.0
1994/95	147.3	3.7	539.9	364.1	20.8	365.5	117.6
1995/96	148.4	3.7	547.3	368.8	19.7	368.3	118.1
1996/97	150.1	3.8	565.3	381.4	18.9	379.2	120.3
1997/98	151.7	3.8	575.2	387.4	27.6	380.0	127.7
1998/99	153.1	3.8	587.0	394.9	24.8	388.6	134.0
1999/00	155.9	3.9	608.6	409.2	22.8	400.1	143.1
2000/01	152.4	3.9	594.1	399.3	24.4	395.6	146.7
2001/02	151.3	3.9	594.3	399.5	27.8	413.3	132.9
2002/03	146.9	3.8	563.1	378.2	27.5	408.1	103.0
2003/04	149.3	3.9	585.1	392.3	27.3	413.7	81.6
2004/05	151.8	3.9	596.6	400.9	29.0	408.5	74.0
2005/06	153.9	4.0	621.4	417.3	29.1	414.6	76.7
2006/07	154.5	4.0	624.7	419.9	31.9	421.2	75.5
2007/08	154.9	4.1	642.0	432.6	29.6	427.2	80.9
2008/09	158.2	4.2	667.7	448.7	29.4	437.2	92.4
2009/10	155.9	4.2	656.2	440.6	31.6	438.1	94.9
2010/11	157.8	4.2	670.4	449.3	36.2	445.5	98.7
2011/12	159.2	4.4	694.5	465.8	39.1	459.7	104.8
2012/13	157.2	4.4	699.2	469.0	38.3	468.7	105.2
2013/14	161.2	4.4	711.2	476.8	39.0	474.6	107.4

Notes: Stocks, exports and consumption are expressed on a milled basis in marketing years.

ENDNOTES TO GRAIN: WORLD MARKETS AND TRADE

REGIONAL TABLES

North America: Canada, Mexico, the United States.

Central America: Belize, Costa Rica, El Salvador, Guatemala, Honduras, Nicaragua, Panama.

Caribbean: Anguilla, Antigua and Barbuda, Aruba, Bahamas, Barbados, Bermuda, British Virgin Islands, Cayman Islands, Cuba, Dominica, Dominican Republic, French West Indies, Grenada, Guadeloupe, Haiti, Jamaica and Dep, Leeward-Windward Islands, Martinique, Montserrat, Netherlands Antilles, Puerto Rico, Kitts and Nevis, St. Lucia, St. Vincent and the Grenadines, Trinidad and Tobago, Turks and Caicos Islands, Virgin Islands of the U.S.

South America: Argentina, Bolivia, Brazil, Chile, Colombia, Ecuador, Falkland Islands (Islas Malvinas), French Guiana, Guyana, Paraguay, Peru, Suriname, Uruguay, Venezuela.

EU: Austria, Belgium/Luxembourg, Bulgaria, Croatia, Cyprus, Czech Republic, Denmark, Estonia, Finland, France, Germany, Greece, Hungary, Ireland, Italy, Latvia, Lithuania, Malta, Netherlands, Poland, Portugal, Romania, Slovakia, Slovenia, Spain, Sweden, United Kingdom.

Other Europe: Albania, Azores, Bosnia and Herzegovina, Former Yugoslavia, Gibraltar, Iceland, Macedonia, Montenegro, Norway, Serbia, Switzerland.

Former Soviet Union: Armenia, Azerbaijan, Belarus, Georgia, Kazakhstan, Kyrgyzstan, Moldova, Russia, Tajikistan, Turkmenistan, Ukraine, Uzbekistan.

Middle East: Bahrain, Iran, Iraq, Israel, Jordan, Kuwait, Lebanon, Oman, Qatar, Saudi Arabia, Syria, Turkey, United Arab Emirates, Yemen.

North Africa: Algeria, Egypt, Libya, Morocco, Tunisia.

Sub-Saharan Africa: all African countries except North Africa.

East Asia: China, Hong Kong, Japan, South Korea, North Korea, Macau, Mongolia, Taiwan.

South Asia: Afghanistan, Bangladesh, Bhutan, India, Nepal, Pakistan, Sri Lanka, Maldives.

Southeast Asia: Brunei, Burma, Cambodia, Indonesia, Laos, Malaysia, Philippines, Singapore, Thailand, Vietnam.

Oceania: Australia, Fiji, New Zealand, Papua New Guinea.

OTHER NOTES

Local Marketing Years (LMY): LMY refers to the 12-month period at the onset of the main harvest, when the crop is marketed (i.e., consumed, traded, or stored). The year first listed begins a country's LMY for that commodity (2011/12 starts in 2011); except for summer grains in certain Southern Hemisphere countries and for rice in selected countries, where the second year begins the LMY (2011/12 starts in 2012). Key exporter LMY's are:

Wheat	Corn	Barley	Sorghum
Argentina (Dec/Nov)	Argentina (Mar/Feb)	Australia (Nov/Oct)	Argentina (Mar/Feb)
Australia (Oct/Sep)	Brazil (Mar/Feb)	Canada (Aug/Jul)	Australia (Mar/Feb)
Canada (Aug/Jul)	China (Oct/Sep)	European Union (Jul/Jun)	United States (Sep/Aug)
China (Jul/Jun)	South Africa (May/Apr)	Russia (Jul/Jun)	
European Union (Jul/Jun)	United States (Sep/Aug)	Ukraine (Jul/Jun)	
India (Apr/Mar)		United States (Jun/May)	
Kazakhstan (Jul/Jun)			
Russia (Jul/Jun)			
Turkey (Jun/May)			
Ukraine (Jul/Jun)			
United States (Jun/May)			

For a complete list of local marketing years, please see the FAS website (<http://www.fas.usda.gov/psdonline/psdAvailability.aspx>).

Stocks: Unless otherwise stated, stock data are based on an aggregate of differing local marketing years and should not be construed as representing world stock levels at a fixed point in time.

Consumption: World totals for consumption reflect total utilization, including food, seed, industrial, feed, and waste; as well as differences in local marketing year imports and local marketing year exports. Consumption statistics for regions and individual countries, however, reflect food, seed, industrial, feed, and waste only.

Trade: All PSD tables are balanced on the different local marketing years. All trade tables contain Trade Year (TY) data which puts all countries on a uniform, 12-month period for analytical comparisons: wheat is July/June; coarse grains, corn, barley, sorghum, oats, and rye are Oct/Sept; and rice is calendar year.

EU Consolidation: The trade figures starting from 1999/00 represent the European Union (Croatia plus the former EU-27) and exclude all intra-trade. For the years 1960/61 through 1998/99, figures are the EU-15 and also exclude all intra-trade. EU-15 member states' data for grains are no longer maintained in the official USDA database. Data for the individual NMS-10, plus Bulgaria, Romania, and Croatia, exists only prior to 1999/00.

Statistics: (1) Wheat trade statistics include wheat, flour, and selected pasta products on a grain equivalent basis. (2) Rice trade statistics include rough, brown, milled, and broken on a milled equivalent basis. (3) Coarse grains statistics include corn, barley, sorghum, oats, rye, millet, and mixed grains but exclude trade in barley malt, millet, and mixed grains.

Unaccounted: This term includes grain in transit, reporting discrepancies in some countries, and trade to countries outside the USDA database.

The Global Commodity Analysis Division, Office of Global Analysis, Foreign Agricultural Service, USDA, Washington, DC 20250, prepared this circular. Information is gathered from official statistics of foreign governments and other foreign source materials, reports of U.S. agricultural attachés and Foreign Service officers, office research, and related information. Further information may be obtained by writing the Division or telephoning (202) 720-3448.

Note: The previous report in this series was the Grain: World Markets and Trade Foreign Agricultural Service Circular FG 08-13 August 2013. For further details on world grain production, please see World Agricultural Production Foreign Agricultural Service Circular WAP 09-13 September 2013.

This circular is available in its entirety on the Internet via the Foreign Agricultural Service Home Page. The address is: <http://www.fas.usda.gov>