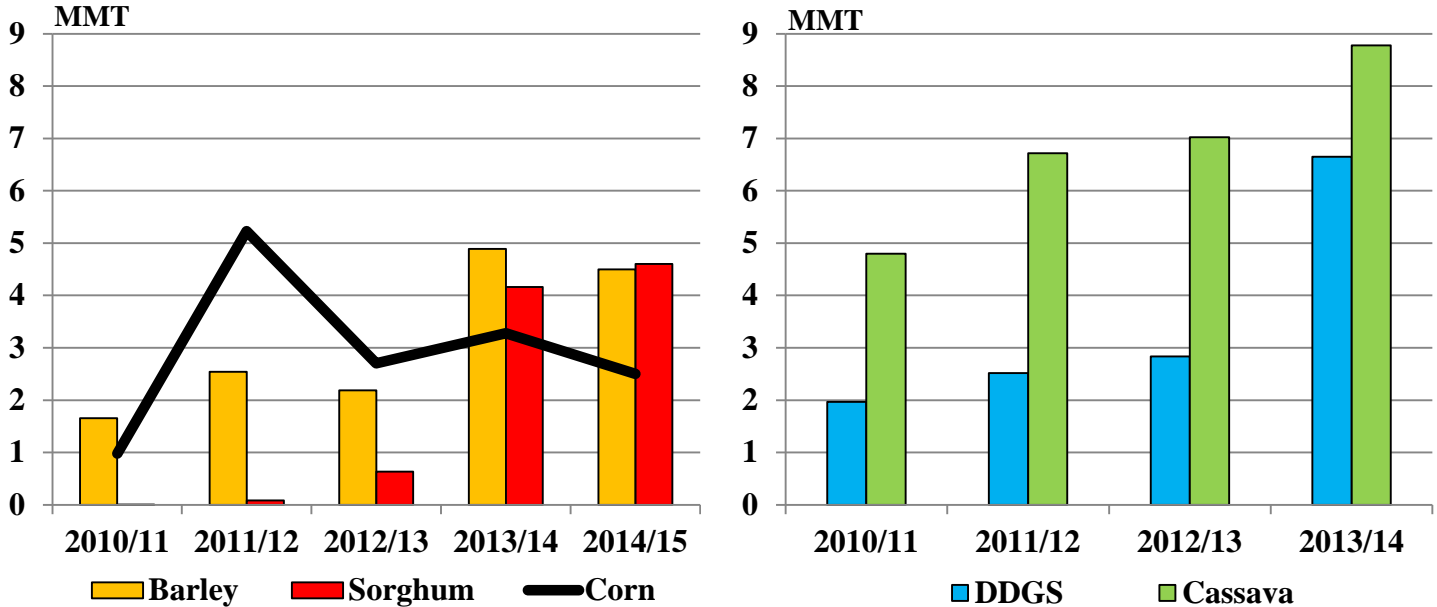




Grain: World Markets and Trade

Chinese Imports of Feedstuffs Soar



China's imports of barley, sorghum, distiller's dried grains (DDGS), and cassava soared in 2013/14 (Oct-Sep) as feed millers sought alternative ingredients. China's domestic corn prices have been elevated by producer support programs, a tariff-rate quota for corn, and uncertainties caused by its heightened enforcement of an unapproved biotech trait for corn (and DDGS).

Traditionally, barley and sorghum are the main ingredients for beer, vinegar, and distilled spirits production. Now, however, imported barley and sorghum are being incorporated into rations for the rapidly developing industrial animal feed sector. Imports of barley and sorghum are forecast to continue at elevated levels in 2014/15, making the country the world's largest sorghum importer and the second-largest barley importer.

China accounted for over 80 percent of U.S. sorghum exports in 2013/14 and accounts for nearly all of U.S. export commitments (outstanding sales and shipments) to date in 2014/15, boosting U.S. sorghum export unit values above corn. However, a recent government agreement between China and Argentina to facilitate sorghum exports could bring competition and pressure prices lower. For the next few months, the United States will remain China's dominant supplier as new-crop Australian and Argentine supplies will not be available until March.

For email subscription, click here to register: <https://public.govdelivery.com/accounts/USDAFAS/subscriber/new>

TABLE OF CONTENTS

World Markets and Trade: Commentary and Current Data	
Wheat	4
Rice	10
Coarse Grains.....	15
Historical Data Series for Selected Regions and Countries.....	36
Endnotes to Grain: World Markets and Trade.....	55

The Foreign Agricultural Service (FAS) updates its production, supply and distribution (PSD) database for cotton, oilseeds, and grains at 12:00 p.m. on the day the *World Agricultural Supply and Demand Estimates* (WASDE) report is released. This circular is released by 12:15 p.m.

To download the tables in the publication, go to Production, Supply and Distribution Database (PSD Online): (<http://apps.fas.usda.gov/psdonline/psdHome.aspx>), scroll down to Reports, and Click the plus sign [+] next to Grains.

FAS Reports and Databases:

Current *World Market and Trade and World Agricultural Production* Reports:

<http://apps.fas.usda.gov/psdonline/psdDataPublications.aspx>

Archives *World Market and Trade and World Agricultural Production* Reports:

<http://usda.mannlib.cornell.edu/MannUsda/viewTaxonomy.do?taxonomyID=7>

Production, Supply and Distribution Database (PSD Online):

<http://apps.fas.usda.gov/psdonline/psdHome.aspx>

Global Agricultural Trade System (U.S. Exports and Imports):

<http://apps.fas.usda.gov/gats/default.aspx>

Export Sales Report:

<http://apps.fas.usda.gov/esrquery/>

Global Agricultural Information Network (Agricultural Attaché Reports):

<http://gain.fas.usda.gov/Pages/Default.aspx>

Other USDA Reports:

World Agricultural Supply and Demand Estimates (WASDE):

<http://www.usda.gov/oce/commodity/wasde/>

Economic Research Service:

<http://www.ers.usda.gov/topics/crops>

National Agricultural Statistics Service:

<http://www.nass.usda.gov/Publications/>

All Grain Summary Comparison

	Marketing Year	Wheat			Rice, Milled			Corn		
		2012/13	2013/14	2014/15	2012/13	2013/14	2014/15	2012/13	2013/14	2014/15
Production										
United States	(Jun-May)	61.3	58.1	55.1	6.3	6.1	7.1	273.2	353.7	366.0
Other		596.6	656.6	664.7	465.5	470.3	468.0	594.8	635.5	624.4
World Total		657.9	714.7	719.9	471.9	476.4	475.0	868.0	989.2	990.3
Domestic Consumption										
United States	(Jun-May)	37.8	34.2	33.1	3.8	4.0	4.2	263.0	295.4	302.5
Other		648.4	660.4	678.1	462.0	473.1	476.3	606.0	650.9	666.5
World Total		686.2	694.6	711.2	465.8	477.1	480.5	869.0	946.2	969.0
Ending Stocks										
United States	(Jun-May)	19.5	16.0	17.5	1.2	1.0	1.3	20.9	31.4	51.0
Other		155.2	169.7	175.4	108.9	105.4	97.3	116.9	141.6	140.5
World Total		174.8	185.7	192.9	110.1	106.5	98.6	137.8	173.0	191.5
TY Imports										
United States	(Jun-May)	3.4	4.8	4.4	0.7	0.7	0.7	4.3	0.7	0.7
Other		140.1	153.8	147.8	35.8	38.5	38.7	94.6	122.2	109.3
World Total		143.6	158.6	152.2	36.5	39.3	39.4	98.8	122.9	110.0
TY Exports										
United States	(Jun-May)	27.7	31.5	25.5	3.3	3.1	3.4	18.3	50.7	44.5
Other		119.4	130.6	129.7	36.1	38.6	38.2	82.3	78.9	70.5
World Total		147.1	162.1	155.2	39.4	41.7	41.6	100.5	129.6	115.0

Note: Consumption in this table has not been adjusted for differences in marketing year imports and exports and therefore differs from global totals shown elsewhere.

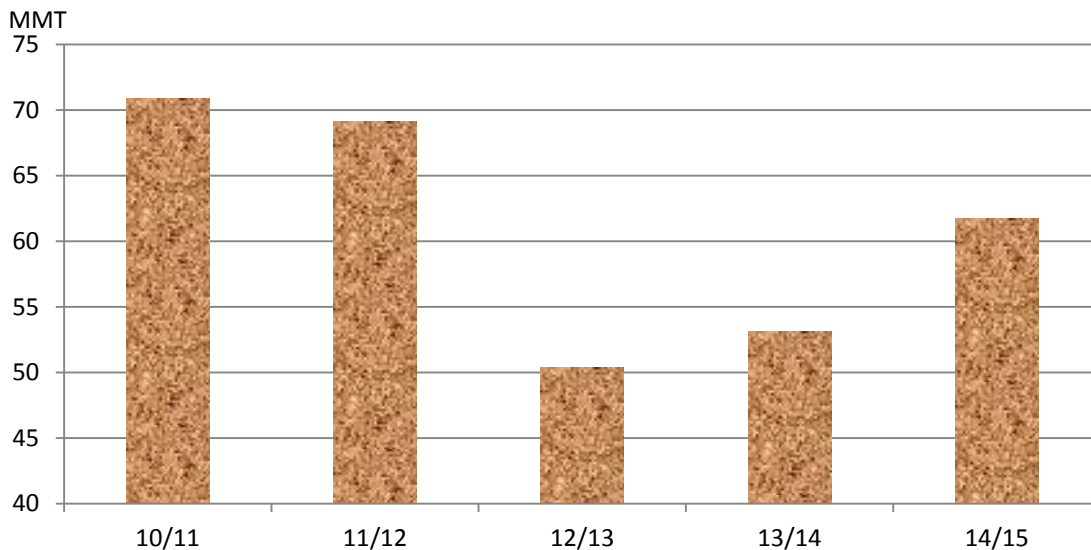
Marketing years for U.S. grains are: Wheat (Jun-May), Rice (Aug-Jul), Corn (Sep-Aug).
'Marketing Year' column is germane for U.S. wheat only.

WHEAT: WORLD MARKETS AND TRADE

OVERVIEW

Global production for 2014/15 is down slightly, but still a record, as smaller crops in Australia, Egypt, and Kazakhstan are only partially offset by larger crops in the EU (mostly in Poland, Germany, Romania and Spain). Global trade is down on import cuts for China, Egypt, Pakistan, Russia, and South Korea. Brazil, Kazakhstan, and Mexico are boosted but do not compensate for the overall decline. U.S. exports and imports are unchanged. The season-average farm price is unchanged.

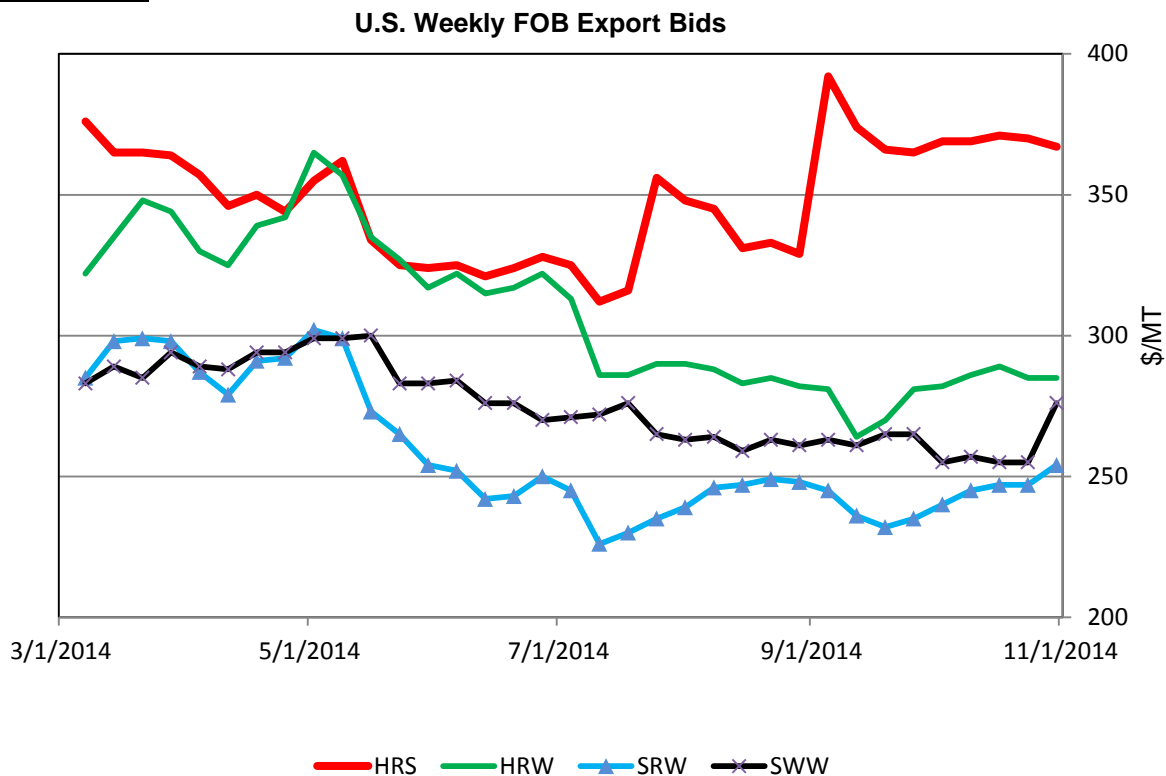
WHEAT EXPORTER* STOCKS REBUILDING



*Australia, Canada, European Union, Kazakhstan, Russia, Ukraine, and United States.

Wheat exporter ending stocks in 2014/15 are forecast up year-to-year on record global production, putting pressure on prices. The EU is the largest driver of rising stocks based on a record crop, quality concerns, and intensified competition, particularly from Russia. Despite record exports, Russian stocks are projected up on a bumper crop. Ukraine's stocks are expected to rise significantly as its major market for feed-quality wheat, the EU, has an abundant supply of lower-priced feed grains. Ukraine is also facing competition from lower-priced corn in other markets. U.S. stocks are forecast higher because of competition from other exporters and larger supplies in South America. By contrast, Canada's stocks are projected to decline based on tighter supplies, while Australia and Kazakhstan are nearly unchanged.

U.S. PRICES:



Domestic: Prices for most wheat classes rose in October. Soft White Winter (SWW) spiked \$21 to \$276/ton as supplies tighten. Soft Red Winter (SRW) climbed \$14 to \$254/ton and Hard Red Winter (HRW) rose \$3 to \$285/ton. Hard Red Spring (HRS) dropped just \$2 to \$367/ton, but remains elevated.

TRADE CHANGES IN 2014/15

Selected Exporter

- **Australia** is down 1.0 million tons to 18.0 million based on lower production.

Selected Importers

- **Brazil** is raised 500,000 tons to 7.0 million because of crop quality concerns in some regions.
- **China** is reduced 300,000 tons to 1.7 million due to the slow pace and expectations that the tariff-rate quota for the private sector will not be expanded.

-
- **Egypt** is slashed 800,000 tons to 9.5 million because changes to its bread subsidy program are expected to cut consumption and reduce waste considerably.
 - **South Korea** is lowered 400,000 tons to 3.8 million because of reduced purchases of feed-quality wheat.
 - **Mexico** is raised 300,000 tons to 4.6 million on a smaller crop and the strong early-season pace of shipments.
 - **Pakistan** is down 300,000 tons to 700,000 because the Government implemented a 20 percent import duty to stem the influx of lower-priced imports.
 - **Russia** is cut 300,000 tons to 200,000 due to lower supplies in Kazakhstan. Russia imported significant quantities of wheat from Kazakhstan over the previous 3 years.

World Wheat, Flour, and Products Trade
July/June Year, Thousand Metric Tons

	2010/11	2011/12	2012/13	2013/14	2014/15 Oct	2014/15 Nov
TY Exports						
Argentina	7,742	11,951	7,450	1,601	6,000	6,000
Australia	18,455	23,031	21,269	18,339	19,000	18,000
Canada	16,768	17,603	18,581	22,138	22,500	22,500
European Union	23,086	16,728	22,677	31,925	28,000	28,000
India	73	1,723	8,651	5,354	2,000	2,000
Kazakhstan	5,519	11,069	6,801	8,000	5,500	5,300
Mexico	821	790	729	1,322	1,500	1,500
Russia	3,983	21,627	11,289	18,534	22,500	22,500
Turkey	2,944	3,678	3,583	4,294	3,200	3,200
Ukraine	4,302	5,436	7,190	9,755	10,000	10,000
Others	14,351	12,038	11,136	9,359	10,945	10,745
Subtotal	98,044	125,674	119,356	130,621	131,145	129,745
United States	36,098	28,144	27,734	31,497	25,500	25,500
World Total	134,142	153,818	147,090	162,118	156,645	155,245
TY Imports						
Afghanistan	2,000	2,200	1,600	2,050	2,000	2,000
Algeria	6,516	6,500	6,484	7,484	7,500	7,400
Bangladesh	3,951	2,016	2,719	3,318	3,300	3,300
Brazil	6,742	7,053	7,547	7,061	6,500	7,000
Egypt	10,600	11,650	8,300	10,170	10,300	9,500
European Union	4,621	7,362	5,277	3,982	5,000	5,000
Indonesia	6,606	6,457	7,146	7,390	7,700	7,700
Iran	200	2,400	5,600	6,600	5,000	5,000
Iraq	3,631	3,784	3,948	3,246	3,000	3,000
Japan	5,869	6,354	6,598	6,123	6,000	6,000
Korea, South	4,761	5,188	5,439	4,288	4,200	3,800
Libya	1,474	1,561	1,946	2,049	2,050	1,850
Mexico	3,404	5,020	3,826	4,636	4,300	4,600
Morocco	4,019	3,671	3,825	3,892	3,000	3,000
Nigeria	4,052	3,931	4,140	4,550	4,750	4,750
Philippines	3,224	4,075	3,645	3,482	3,600	3,600
Saudi Arabia	1,739	2,904	1,921	3,429	3,250	3,250
Sudan	1,595	2,360	1,793	2,664	2,600	2,600
Syria	428	680	963	1,579	2,000	2,000
Thailand	1,943	2,646	1,845	1,693	2,000	2,000
Turkey	3,545	4,413	3,312	4,154	5,500	5,500
Uzbekistan	1,618	2,698	1,863	2,224	2,000	1,800
Venezuela	1,469	1,686	1,617	1,951	1,800	1,800
Vietnam	2,459	2,711	1,671	2,158	2,100	2,100
Yemen	2,816	2,685	3,149	3,425	3,600	3,600
Others	38,617	46,136	43,971	50,195	46,345	45,665
Subtotal	127,899	148,141	140,145	153,793	149,395	147,815
Unaccounted	3,645	2,653	3,503	3,558	2,850	3,030
United States	2,598	3,024	3,442	4,767	4,400	4,400
World Total	134,142	153,818	147,090	162,118	156,645	155,245

TY=Trade Year, see Endnotes.

World Wheat Production, Consumption, and Stocks
Local Marketing Years, Thousand Metric Tons

	2010/11	2011/12	2012/13	2013/14	2014/15 Oct	2014/15 Nov
Production						
Argentina	17,200	15,500	9,300	10,500	12,000	12,000
Australia	27,410	29,905	22,856	27,013	25,000	24,000
Brazil	5,900	5,800	4,380	5,300	6,300	6,300
Canada	23,300	25,288	27,205	37,500	27,500	27,500
China	115,180	117,400	121,023	121,930	126,000	126,000
Egypt	7,200	8,400	8,500	8,250	8,950	8,200
European Union	136,667	138,182	133,850	143,134	153,976	155,401
India	80,800	86,870	94,880	93,510	95,910	95,910
Iran	13,500	12,400	13,800	14,500	13,000	13,000
Kazakhstan	9,638	22,732	9,841	13,941	12,500	12,000
Pakistan	23,900	25,000	23,300	24,000	25,000	25,000
Russia	41,508	56,240	37,720	52,091	59,000	59,000
Turkey	17,000	18,800	15,500	18,000	15,000	15,000
Ukraine	16,844	22,324	15,761	22,278	24,500	24,500
Uzbekistan	6,500	6,300	6,700	6,800	7,150	7,150
Others	48,144	50,388	52,028	57,887	53,935	53,770
Subtotal	590,691	641,529	596,644	656,634	665,721	664,731
United States	58,868	54,244	61,298	58,105	55,394	55,129
World Total	649,559	695,773	657,942	714,739	721,115	719,860
Total Consumption						
Algeria	8,750	8,950	9,450	9,850	10,050	10,050
Brazil	10,800	11,200	10,900	11,400	11,900	12,300
Canada	7,551	9,852	9,598	9,965	9,750	9,830
China	110,500	122,500	125,000	121,500	124,000	124,000
Egypt	17,700	18,600	18,700	18,500	19,000	17,500
European Union	122,844	127,234	119,250	115,750	126,000	126,000
India	81,760	81,404	83,822	94,006	94,460	94,485
Indonesia	6,035	6,250	6,650	7,065	7,565	7,565
Iran	15,700	14,900	16,400	18,000	18,200	18,200
Morocco	7,850	8,800	8,300	9,000	8,900	8,900
Pakistan	23,000	23,100	23,900	24,100	25,100	25,100
Russia	38,600	38,000	33,550	34,100	34,800	35,000
Turkey	17,300	18,100	17,500	17,750	17,400	17,400
Ukraine	11,600	14,950	11,400	11,500	12,000	12,000
Uzbekistan	7,700	7,800	8,000	8,400	8,900	8,700
Others	135,175	144,435	146,011	149,500	151,688	151,083
Subtotal	623,988	665,039	641,577	669,602	681,010	679,590
United States	29,424	31,962	37,768	34,174	33,095	33,094
World Total	653,412	697,001	679,345	703,776	714,105	712,684
Ending Stocks						
Australia	8,184	7,051	4,654	6,246	5,717	6,096
Canada	7,360	5,932	5,052	9,795	6,025	5,945
China	59,091	55,946	53,960	60,274	63,274	62,974
European Union	11,934	13,516	10,716	10,157	15,133	16,558
India	15,360	19,950	24,200	17,830	16,300	16,300
Russia	13,736	10,899	4,952	5,209	7,509	6,909
Ukraine	3,341	5,363	2,579	3,670	6,220	6,220
Others	54,897	57,294	49,108	56,496	54,610	54,363
Subtotal	173,903	175,951	155,221	169,677	174,788	175,365
United States	23,487	20,211	19,538	16,045	17,797	17,533
World Total	197,390	196,162	174,759	185,722	192,585	192,898

Regional Wheat Imports, Production, Consumption, and Stocks

Thousand Metric Tons

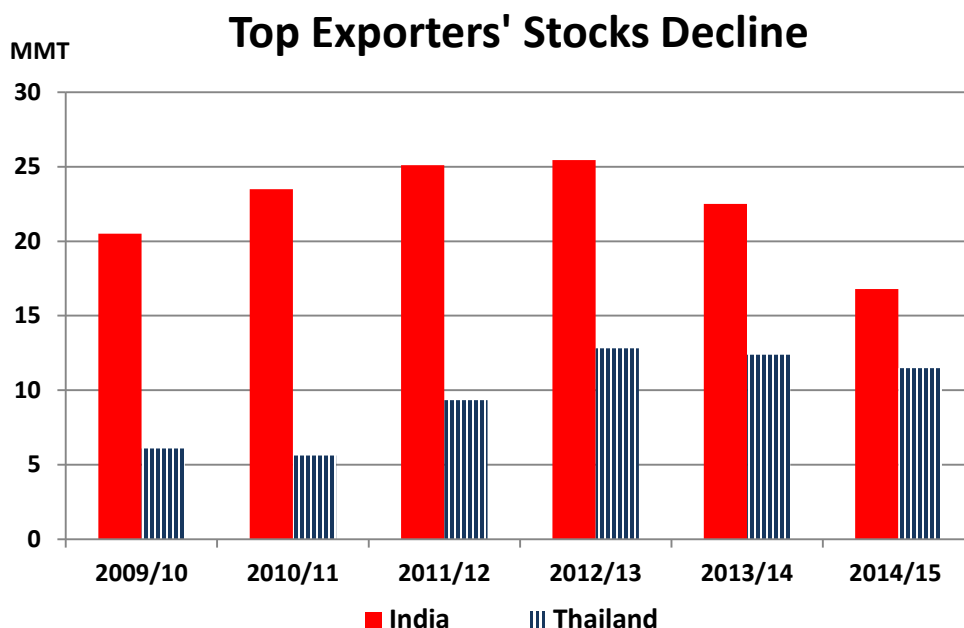
	2010/11	2011/12	2012/13	2013/14	Oct 2014/15	Nov 2014/15
TY Imports						
North America	6,431	8,541	7,753	9,844	9,180	9,480
Central America	1,684	1,666	1,662	1,845	1,820	1,820
South America	13,158	13,779	14,392	14,806	13,325	13,825
European Union - 28	4,621	7,362	5,277	3,982	5,000	5,000
Other Europe	1,614	1,913	1,633	1,840	1,890	1,890
Former Soviet Union - 12	5,498	8,022	7,228	7,389	7,190	6,885
Middle East	17,324	23,065	24,175	28,304	28,205	28,205
North Africa	24,427	24,855	22,052	25,240	24,350	23,250
Sub-Saharan Africa	15,093	18,484	17,437	19,065	20,075	20,075
East Asia	13,889	16,865	17,352	19,463	14,535	13,835
South Asia	7,593	5,466	5,306	6,680	7,440	7,165
Southeast Asia	16,341	18,016	16,356	17,107	17,750	17,750
Others	2,824	3,131	2,964	2,995	3,035	3,035
Total	130,497	151,165	143,587	158,560	153,795	152,215
Production						
North America	85,844	83,160	91,734	98,982	86,709	86,289
South America	27,560	25,766	18,404	19,985	23,650	23,650
European Union - 28	136,667	138,182	133,850	143,134	153,976	155,401
Other Europe	3,188	3,597	3,504	4,409	4,054	3,854
Former Soviet Union - 12	81,027	114,985	77,802	103,873	111,600	111,100
Middle East	38,638	39,282	36,380	40,918	35,030	35,030
North Africa	15,914	18,366	17,320	19,722	17,450	16,800
Sub-Saharan Africa	5,379	6,054	6,544	7,148	6,398	6,398
East Asia	116,355	118,775	122,483	123,244	127,352	127,442
South Asia	110,949	117,132	126,390	125,690	129,205	129,205
Oceania	27,855	30,288	23,345	27,453	25,510	24,510
Others	183	186	186	181	181	181
Total	649,559	695,773	657,942	714,739	721,115	719,860
Domestic Consumption						
North America	43,425	49,414	53,991	50,789	49,495	49,674
South America	25,598	26,121	26,433	27,137	27,825	28,225
European Union - 28	122,844	127,234	119,250	115,750	126,000	126,000
Other Europe	4,723	4,871	4,696	4,937	4,905	4,905
Former Soviet Union - 12	75,710	79,980	71,725	73,075	75,160	75,060
Middle East	54,406	56,273	56,763	59,642	59,810	59,815
North Africa	38,805	40,927	41,421	42,424	43,150	41,450
Sub-Saharan Africa	20,647	22,473	22,971	25,089	25,723	25,723
East Asia	123,952	137,057	140,083	135,338	137,465	137,055
South Asia	117,003	115,834	121,167	132,200	134,160	134,185
Southeast Asia	14,977	16,665	16,235	16,419	17,305	17,305
Oceania	6,845	7,819	8,106	8,275	8,160	8,160
Others	3,354	3,369	3,358	3,485	3,650	3,650
Total	652,289	688,037	686,199	694,560	712,808	711,207
Ending Stocks						
North America	31,164	26,718	24,868	26,159	24,106	23,807
South America	8,574	3,991	3,464	6,861	6,645	6,811
European Union - 28	11,934	13,516	10,716	10,157	15,133	16,558
Other Europe	1,182	1,327	1,046	1,086	1,055	1,055
Former Soviet Union - 12	22,719	26,006	13,936	15,019	20,209	19,604
Middle East	12,074	10,986	11,964	14,604	14,769	14,794
North Africa	12,194	14,094	11,441	13,480	11,655	11,605
Sub-Saharan Africa	1,367	2,349	2,193	2,339	2,134	2,134
East Asia	62,150	59,242	57,509	63,470	66,661	66,147
South Asia	21,079	25,425	28,144	21,545	20,205	19,905
Southeast Asia	3,991	4,703	4,154	4,056	3,671	3,756
Oceania	8,580	7,415	4,957	6,531	5,972	6,351
Others	382	390	367	415	370	371
Total	197,390	196,162	174,759	185,722	192,585	192,898

NOTES: Regional definitions appear on last page of this circular. Imports are reported on a trade year basis. All other data are reported using local marketing years.

RICE: WORLD MARKETS AND TRADE

OVERVIEW

Global production for 2014/15 is slightly lower than last month as reductions in Egypt, Australia, and Afghanistan more than offset the increase in South Korea. Global trade is higher primarily driven by Thailand. Global stocks are reduced on stronger consumption in India and Vietnam. U.S. production is raised marginally, and trade is unchanged.



Since their peak in 2012/13, stocks in both India and Thailand have declined. Stocks in India are down as the government has released 5 million tons to control rising food prices. Stocks in Thailand are drawn down as the current government actively pursues sales opportunities to reduce stocks, bought under the now-discontinued paddy pledging scheme. The sizable decline in the two countries' stocks is forecast to drive down 2014/15 global stocks to the lowest in 5 years.

SELECTED TRADE CHANGES

- **China's** 2014 imports are boosted 300,000 tons to 3.8 million on strong purchases mainly from Thailand and Burma. Imports for 2015 are up 300,000 tons to a record 4.0 million.
- **Egypt's** 2014 exports are cut 200,000 tons to 600,000, while 2015 exports are cut 375,000 tons to 500,000 reflecting a smaller crop in both years.

Grain: World Markets and Trade, November 2014

-
- **Nepal's** 2014 imports are up 100,000 tons to 350,000 on larger volumes from India.
 - **Philippines'** 2014 imports are up 200,000 tons to 1.7 million reflecting large purchases from Vietnam and Thailand. Imports for 2015 are raised 100,000 tons to 1.7 million.
 - **Senegal's** 2014 imports are raised 100,000 tons to 1.2 million on large shipments from Thailand. Imports for 2015 are also raised 100,000 tons to 1.2 million.
 - **South Korea's** 2014 imports are cut 115,000 tons to 330,000 on trade trends to date.
 - **Thailand's** 2014 exports are boosted 800,000 tons to 10.3 million on continued strong sales by the government. Exports for 2015 are also raised 800,000 tons to a record 10.8 million.

World Rice Trade
January/December Year, Thousand Metric Tons

	2010/11	2011/12	2012/13	2013/14	2014/15 Oct	2014/15 Nov
TY Exports						
Argentina	732	608	526	600	600	600
Australia	311	449	460	430	475	400
Brazil	1,296	1,105	830	840	800	800
Burma	1,075	1,357	1,163	1,300	1,300	1,300
Cambodia	860	900	1,075	1,000	1,200	1,200
China	487	267	447	300	350	350
Egypt	320	600	700	600	875	500
European Union	237	194	203	230	190	220
Guyana	260	265	277	450	450	450
India	4,637	10,250	10,480	10,000	8,700	8,700
Pakistan	3,414	3,399	4,126	3,900	3,900	3,900
Paraguay	208	262	365	250	260	260
Thailand	10,647	6,945	6,722	10,300	10,000	10,800
Uruguay	841	1,056	939	930	950	950
Vietnam	7,000	7,717	6,700	6,500	6,700	6,700
Others	1,002	1,259	1,057	999	1,035	1,037
Subtotal	33,327	36,633	36,070	38,629	37,785	38,167
United States	3,246	3,298	3,293	3,100	3,400	3,400
World Total	36,573	39,931	39,363	41,729	41,185	41,567
TY Imports						
Angola	275	360	430	450	450	450
Bangladesh	1,486	53	114	700	500	500
Brazil	591	732	712	700	700	700
Cameroon	310	450	550	525	525	525
China	575	2,900	3,483	3,800	3,700	4,000
Cote d'Ivoire	935	1,375	940	1,150	1,200	1,200
Cuba	558	330	413	450	450	450
European Union	1,496	1,313	1,375	1,400	1,400	1,400
Ghana	620	595	725	600	620	620
Indonesia	3,098	1,960	650	1,400	1,000	1,000
Iran	1,870	1,500	2,220	1,650	1,700	1,700
Iraq	1,036	1,478	1,294	1,400	1,450	1,450
Japan	742	650	690	650	700	700
Kenya	335	400	410	440	480	480
Korea, South	532	238	580	330	450	450
Malaysia	1,076	1,006	890	1,100	1,100	1,100
Mexico	705	680	746	700	775	775
Mozambique	360	445	500	500	520	520
Nigeria	2,550	3,400	2,400	3,000	3,500	3,500
Philippines	1,200	1,500	1,000	1,650	1,600	1,700
Saudi Arabia	1,059	1,193	1,326	1,325	1,325	1,325
Senegal	805	1,200	1,075	1,200	1,100	1,200
South Africa	885	870	990	1,000	1,100	1,100
United Arab Emirates	420	430	440	450	460	460
Yemen	337	420	432	450	450	450
Others	9,551	11,106	11,394	11,508	11,063	10,953
Subtotal	33,407	36,584	35,779	38,528	38,318	38,708
Unaccounted	2,545	2,707	2,909	2,471	2,197	2,189
United States	621	640	675	730	670	670
World Total	36,573	39,931	39,363	41,729	41,185	41,567

TY=Trade Year, see Endnotes.

Note about dates: 2014/15 is calendar year 2015, 2013/14 is calendar year 2014, and so on.

World Rice Production, Consumption, and Stocks
Local Marketing Years, Thousand Metric Tons

	2010/11	2011/12	2012/13	2013/14	2014/15 Oct	2014/15 Nov
Milled Production						
Bangladesh	31,700	33,700	33,820	34,390	34,600	34,600
Brazil	9,300	7,888	8,037	8,300	8,350	8,350
Burma	11,060	11,473	11,715	11,957	12,150	12,150
Cambodia	4,233	4,268	4,670	4,725	4,900	4,900
China	137,000	140,700	143,000	142,530	144,000	144,000
Egypt	3,100	4,250	4,675	4,750	4,900	4,500
India	95,980	105,310	105,240	106,540	102,000	102,000
Indonesia	35,500	36,500	36,550	36,000	37,000	37,000
Japan	7,720	7,646	7,756	7,832	7,700	7,700
Korea, South	4,295	4,224	4,006	4,230	4,050	4,180
Nepal	2,680	2,970	3,000	3,361	3,100	3,100
Pakistan	5,000	6,200	5,800	6,700	6,500	6,500
Philippines	10,539	10,710	11,428	11,858	12,200	12,200
Thailand	20,262	20,460	20,200	20,460	20,500	20,500
Vietnam	26,371	27,152	27,537	28,000	28,200	28,200
Others	37,627	37,657	38,100	38,617	38,270	38,096
Subtotal	442,367	461,108	465,534	470,250	468,420	467,976
United States	7,593	5,866	6,348	6,115	7,057	7,069
World Total	449,960	466,974	471,882	476,365	475,477	475,045
Consumption and Residual						
Bangladesh	32,400	34,300	34,500	34,900	35,200	35,200
Brazil	8,200	7,928	7,850	7,900	7,900	7,900
Burma	10,100	10,200	10,400	10,500	11,000	11,000
Cambodia	3,370	3,400	3,550	3,650	3,700	3,700
China	135,000	139,600	144,000	146,300	148,000	148,000
Egypt	3,300	3,620	4,050	4,000	4,100	4,000
India	90,206	93,334	94,031	99,180	98,000	99,000
Indonesia	38,044	38,188	38,127	38,500	39,200	39,200
Iran	3,250	3,300	3,350	3,400	3,450	3,450
Japan	8,200	8,050	8,250	8,250	8,200	8,200
Korea, South	5,175	4,880	4,489	4,460	4,590	4,450
Nigeria	4,800	5,600	5,300	6,000	6,100	6,100
Philippines	12,900	12,860	12,850	12,850	13,200	13,200
Thailand	10,300	10,400	10,600	10,875	10,900	10,900
Vietnam	19,400	19,650	21,900	22,000	21,500	21,900
Others	53,813	56,828	58,737	60,366	60,167	60,073
Subtotal	440,638	456,292	464,854	475,962	477,497	478,755
United States	4,329	3,492	3,779	3,994	4,191	4,191
World Total	444,967	459,784	468,633	479,956	481,688	482,946
Ending Stocks						
China	42,574	45,023	46,826	46,699	46,049	46,249
European Union	1,215	1,117	1,159	1,156	991	1,159
India	23,500	25,100	25,440	22,500	20,780	16,800
Indonesia	7,131	7,403	6,476	5,376	4,176	4,176
Japan	2,712	2,747	2,742	2,764	2,824	2,764
Philippines	2,459	1,509	1,487	1,945	2,545	2,545
Thailand	5,615	9,330	12,808	12,393	13,093	11,493
Others	12,891	13,269	11,956	12,601	12,488	12,064
Subtotal	98,097	105,498	108,894	105,434	102,946	97,250
United States	1,514	1,303	1,156	1,025	1,296	1,308
World Total	99,611	106,801	110,050	106,459	104,242	98,558

Note: All data are reported on a milled basis.

Regional Rice Imports, Production, Consumption, and Stocks

Thousand Metric Tons

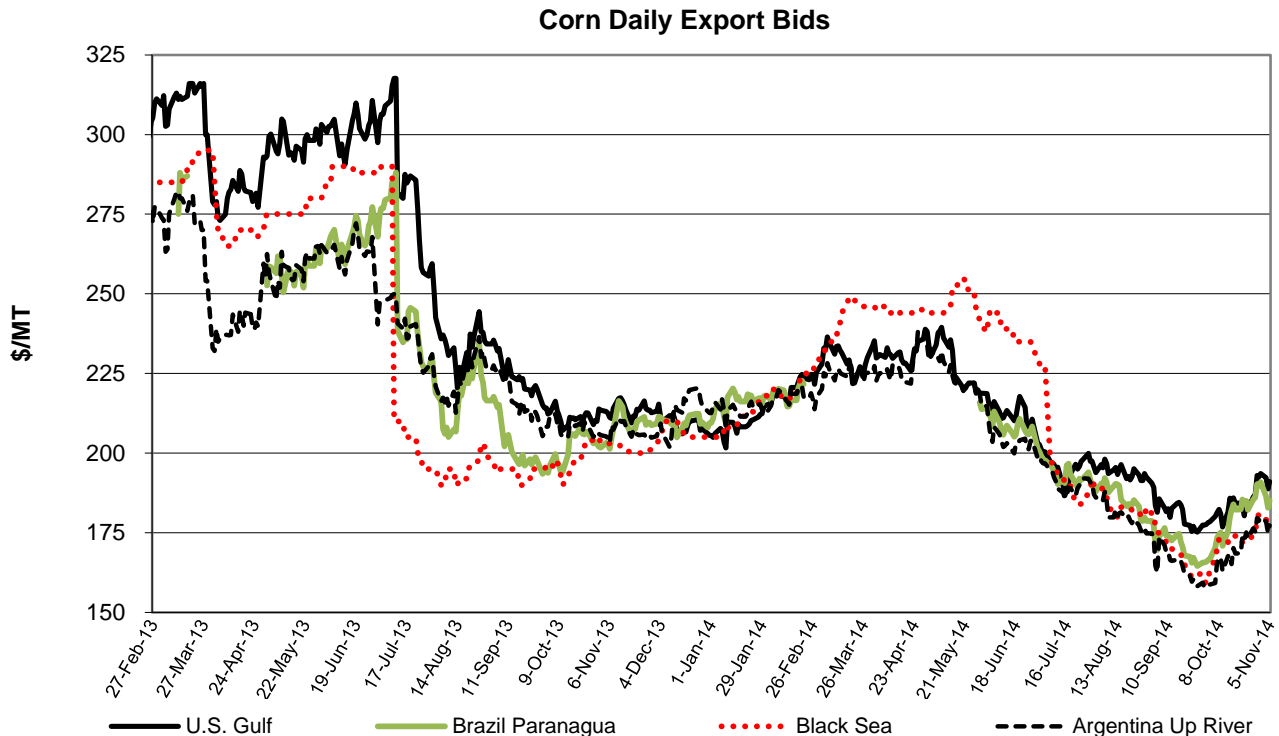
	2010/11	2011/12	2012/13	2013/14	Oct 2014/15	Nov 2014/15
TY Imports						
North America	1,654	1,664	1,776	1,780	1,795	1,795
Caribbean	1,099	845	980	1,025	1,015	1,015
South America	1,396	1,896	1,702	1,847	1,907	1,907
Other Europe	128	114	125	130	130	130
Former Soviet Union - 12	366	456	544	531	441	441
Middle East	6,099	6,455	7,128	6,670	6,765	6,690
North Africa	381	777	487	495	520	485
Sub-Saharan Africa	9,865	12,245	11,850	12,655	12,830	12,930
East Asia	2,444	4,389	5,332	5,385	5,460	5,760
South Asia	1,864	737	722	1,340	1,250	1,250
Southeast Asia	6,418	5,488	3,611	5,105	4,750	4,850
Others	2,314	2,158	2,197	2,295	2,125	2,125
Total	34,028	37,224	36,454	39,258	38,988	39,378
Production						
North America	7,739	5,979	6,479	6,246	7,185	7,216
Caribbean	943	1,002	974	1,040	1,063	1,063
South America	17,197	15,215	15,852	16,280	16,396	16,396
European Union - 28	2,172	2,110	2,100	1,937	1,953	1,953
Former Soviet Union - 12	1,321	1,294	1,294	1,205	1,237	1,237
Middle East	2,131	2,170	2,135	2,330	2,333	2,333
North Africa	3,139	4,289	4,704	4,789	4,900	4,500
Sub-Saharan Africa	13,313	12,904	12,792	13,158	13,023	13,023
East Asia	151,636	155,342	157,692	157,585	158,581	158,711
South Asia	138,116	151,656	150,892	154,286	149,170	149,121
Southeast Asia	111,008	113,649	115,450	116,221	118,301	118,301
Others	1,245	1,364	1,518	1,288	1,335	1,191
Total	449,960	466,974	471,882	476,365	475,477	475,045
Domestic Consumption						
North America	5,429	4,668	4,977	5,204	5,431	5,431
Central America	1,109	1,156	1,181	1,208	1,208	1,208
Caribbean	2,055	1,997	1,959	2,066	2,083	2,083
South America	14,427	14,180	14,394	14,526	14,588	14,588
European Union - 28	3,250	3,300	3,250	3,225	3,200	3,230
Former Soviet Union - 12	1,425	1,422	1,568	1,548	1,453	1,453
Middle East	8,293	8,603	8,810	8,970	9,205	9,130
North Africa	3,677	4,045	4,572	4,509	4,560	4,460
Sub-Saharan Africa	21,598	23,741	24,559	25,615	25,694	25,694
East Asia	151,568	155,886	160,248	162,660	164,275	164,135
South Asia	130,792	136,823	137,570	143,836	142,940	143,891
Southeast Asia	98,530	99,148	101,968	103,041	104,221	104,621
Others	634	661	707	717	540	540
Total	442,787	455,630	465,763	477,125	479,398	480,464
Ending Stocks						
North America	1,734	1,455	1,345	1,183	1,489	1,495
Central America	249	273	241	231	230	230
Caribbean	122	157	104	103	98	98
South America	2,220	1,606	1,512	1,793	2,043	2,043
European Union - 28	1,215	1,117	1,159	1,156	991	1,159
Middle East	1,731	1,526	1,943	1,894	1,757	1,757
North Africa	122	487	427	602	517	627
Sub-Saharan Africa	1,360	2,227	1,963	1,771	1,655	1,655
East Asia	46,690	48,899	50,711	50,622	49,765	50,256
South Asia	25,342	27,511	27,019	24,567	22,277	18,347
Southeast Asia	18,599	21,369	23,202	22,187	23,117	20,617
Oceania	27	40	238	171	94	65
Others	200	134	186	179	209	209
Total	99,611	106,801	110,050	106,459	104,242	98,558

NOTES: Regional definitions appear on last page of this circular. Imports are reported on a trade year basis. All other data are reported using local marketing years.

COARSE GRAINS: WORLD MARKETS AND TRADE

OVERVIEW

World corn production in 2014/15 remains a record and is nearly unchanged as smaller production in the United States and China more than offsets larger crop forecasts for the European Union, Ukraine, and Mexico. Global trade is down slightly as larger domestic feed grain supplies in the EU displace more corn imports. In addition, Chinese demand for feedstuffs is being met from barley and sorghum, reducing prospects for corn (and DDGS) imports. The U.S. season-average farm price is projected higher this month.



PRICES

Since the release of the October WASDE report, U.S. corn export quotes have mostly climbed, continuing a trend that began 6 weeks ago. By early November, prices had risen \$14/ton to \$191/ton. U.S. export prices are underpinned by a late harvest, high barge rates and other logistical problems, and strength in the soy complex. However, price growth has been constrained by expectations for a larger U.S. crop and relatively slow export sales and shipments (exacerbated by a stronger U.S. dollar). The premium of U.S. quotes over South American has remained largely unchanged. Argentine and Brazilian quotes are now \$14/ton and \$6/ton below U.S., respectively. Black Sea quotes are \$14/ton below U.S. and are up slightly over the last month as EU demand remains sluggish.

TRADE CHANGES IN 2014/15

Selected Exporters

- **Argentine corn** is cut 1.0 million tons to 12.5 million and **Brazilian** is down 500,000 tons to 22.0 million on lower expected global trade and greater competition from Ukraine. (**Ukrainian corn** is boosted 500,000 tons to 16.5 million.)
- **Canadian** and **EU barley** are up 200,000 tons each to 1.2 million and 6.7 million, respectively, on strong demand from China.
- **U.S. sorghum** is raised 300,000 tons to 5.6 million on continued purchases from China.

Selected Importers

- **Chinese corn** is cut 500,000 tons to 2.5 million as policies favor imports of other feedstuffs.
- **EU corn** is 1.0 million tons lower to 6.0 million on plentiful supplies of feed grains.
- **Iranian corn** is boosted 200,000 tons to 5.5 million on reports of continued purchases.
- **Chinese barley** is raised by 500,000 tons to 4.5 million on continued strong demand. (2013/14 is up 400,000 tons to 4.9 million.)
- **Chinese sorghum** is boosted 300,000 tons to 4.6 million because of continued purchases from the United States.
- **Mexican sorghum** is slashed 200,000 tons to 100,000 on a larger crop.

TRADE CHANGES IN 2013/14

Selected Exporters - based on trade data

- **U.S. corn** is up 200,000 tons to 50.7 million.
- **Argentine corn** is boosted 300,000 tons to 12.8 million.
- **Paraguayan corn** is raised 400,000 tons to 2.7 million.
- **Ukrainian barley** is up 200,000 tons to 3.7 million.

Selected Importers - based on trade data

- **Indonesian corn** is boosted 200,000 tons to 3.5 million.
- **Mexican corn** is raised 250,000 tons to 11.0 million.
- **Turkish barley** is cut 250,000 tons to 750,000.

World Coarse Grain Trade
October/September Year, Thousand Metric Tons

	2010/11	2011/12	2012/13	2013/14	2014/15 Oct	2014/15 Nov
TY Exports						
Argentina	18,628	22,307	29,496	16,595	16,805	15,805
Australia	4,897	7,279	6,410	6,927	5,325	5,350
Brazil	11,591	12,677	26,078	22,057	22,510	22,010
Canada	4,427	3,853	4,669	5,384	3,300	3,500
European Union	5,865	7,177	8,914	7,680	9,405	9,605
India	3,437	4,858	5,541	4,475	2,850	2,850
Russia	1,029	5,997	4,365	6,890	7,410	7,410
Serbia	2,013	2,345	628	1,825	2,525	2,525
South Africa	2,857	1,851	2,411	2,325	2,525	2,525
Ukraine	7,490	17,447	15,527	23,995	18,860	19,360
Others	4,539	7,463	7,529	8,582	6,825	6,825
Subtotal	66,773	93,254	111,568	106,735	98,340	97,765
United States	49,247	40,153	20,586	56,920	50,085	50,385
World Total	116,020	133,407	132,154	163,655	148,425	148,150
TY Imports						
Algeria	2,949	3,691	3,280	4,910	4,010	4,010
Brazil	650	1,211	1,240	1,246	1,205	1,205
Chile	1,271	1,523	1,327	1,700	1,625	1,625
China	2,697	7,924	5,604	12,445	11,400	11,725
Colombia	4,155	4,103	4,088	4,763	4,730	4,730
Dominican Republic	999	1,054	1,046	1,100	1,200	1,200
Egypt	5,840	7,250	5,096	8,555	7,530	7,530
European Union	8,635	6,908	11,766	16,370	7,155	6,155
Indonesia	3,041	1,724	2,719	3,500	2,600	2,600
Iran	4,000	5,700	4,800	6,400	6,300	6,500
Israel	1,446	1,530	1,564	2,110	1,865	1,875
Japan	18,590	17,730	17,743	17,598	18,400	18,290
Jordan	917	1,144	1,202	1,400	1,200	1,200
Korea, South	8,168	7,726	8,265	10,500	9,590	9,690
Libya	543	829	1,220	1,150	1,250	1,250
Malaysia	2,809	3,309	3,048	3,400	3,400	3,400
Mexico	10,760	12,819	7,623	11,331	11,400	11,200
Morocco	2,059	2,479	1,831	2,640	2,700	2,700
Peru	2,079	1,928	2,404	2,425	2,425	2,425
Saudi Arabia	8,138	10,485	12,390	10,700	10,500	10,500
Taiwan	4,277	4,478	4,398	4,550	4,350	4,350
Tunisia	958	1,071	1,610	1,400	1,000	1,000
Turkey	496	782	1,922	2,000	3,250	3,250
Venezuela	1,251	2,596	2,146	2,600	2,600	2,600
Vietnam	1,000	1,600	1,700	2,200	2,000	2,000
Others	14,890	15,113	13,010	15,115	15,920	15,795
Subtotal	112,618	126,707	123,042	152,108	139,605	138,805
Unaccounted	953	3,558	2,611	8,230	5,670	6,194
United States	2,449	3,142	6,501	3,317	3,150	3,151
World Total	116,020	133,407	132,154	163,655	148,425	148,150

TY=Trade Year, see Endnotes.

World Coarse Grains Production, Consumption, and Stocks
Local Marketing Years, Thousand Metric Tons

	2010/11	2011/12	2012/13	2013/14	2014/15 Oct	2014/15 Nov
Production						
Argentina	33,258	30,105	37,246	34,465	31,116	30,616
Australia	11,485	12,257	11,414	12,370	11,207	11,207
Brazil	60,380	75,884	84,253	82,413	78,113	78,113
Canada	22,668	22,921	24,427	28,735	21,750	21,750
China	183,771	198,635	212,192	225,070	223,650	220,650
Ethiopia	11,193	12,264	12,286	13,752	13,050	13,050
European Union	142,829	149,881	145,888	158,427	163,738	167,094
India	43,370	42,250	39,940	42,710	37,310	37,310
Indonesia	6,800	8,850	8,500	9,100	9,200	9,200
Mexico	29,226	25,689	28,881	32,100	30,140	31,340
Nigeria	20,720	17,421	18,573	19,200	18,600	18,600
Russia	16,416	33,077	28,658	35,735	40,500	40,500
South Africa	11,310	13,268	12,873	15,342	14,096	14,096
Turkey	10,184	11,299	10,595	13,075	9,275	9,275
Ukraine	21,503	33,476	29,527	39,918	35,790	37,790
Others	144,098	145,978	145,691	148,444	151,787	151,807
Subtotal	769,211	833,255	850,944	910,856	889,322	892,398
United States	329,695	322,451	285,311	369,448	383,064	381,370
World Total	1,098,906	1,155,706	1,136,255	1,280,304	1,272,386	1,273,768
Domestic Consumption						
Argentina	11,033	10,510	12,050	13,495	14,131	14,131
Brazil	52,548	53,653	55,803	58,378	59,903	59,903
Canada	21,201	20,285	20,257	22,571	20,520	20,520
China	188,448	196,192	209,671	227,600	235,000	231,825
Egypt	13,332	12,736	12,905	14,080	14,678	14,678
Ethiopia	10,700	11,850	12,150	13,700	13,350	13,350
European Union	154,642	151,460	153,095	163,595	159,670	160,570
India	38,850	37,750	35,275	37,400	35,450	35,450
Japan	18,875	17,990	18,030	17,790	18,600	18,490
Mexico	39,785	37,985	36,195	40,885	40,940	41,940
Nigeria	20,670	17,321	18,700	19,250	18,650	18,650
Russia	18,131	27,728	25,134	28,519	32,300	32,300
South Africa	11,206	11,250	11,635	12,150	12,448	12,448
Turkey	11,075	11,755	13,005	13,430	13,980	13,980
Ukraine	13,772	15,559	14,661	16,227	16,060	16,560
Others	206,980	213,699	217,745	224,469	231,919	231,379
Subtotal	832,032	866,235	860,429	931,722	941,482	940,485
United States	297,492	288,810	275,537	307,380	314,768	314,656
World Total	1,129,524	1,155,045	1,135,966	1,239,102	1,256,250	1,255,141
Ending Stocks						
Argentina	5,597	1,337	2,483	3,953	4,448	4,243
Brazil	10,836	9,821	14,559	18,278	17,689	18,183
China	50,134	60,370	68,386	78,268	78,466	78,693
European Union	16,733	15,579	12,852	15,374	17,192	18,698
Iran	4,138	4,734	4,234	4,334	4,134	4,334
Mexico	2,041	1,857	1,624	3,602	2,699	3,702
Ukraine	2,149	2,421	2,330	3,333	3,158	3,958
Others	43,954	44,593	38,821	48,476	42,424	42,916
Subtotal	135,582	140,712	145,289	175,618	170,210	174,727
United States	32,288	27,819	23,531	34,404	55,757	53,922
World Total	167,870	168,531	168,820	210,022	225,967	228,649

Regional Coarse Grains Imports, Production, Consumption, and Stocks

Thousand Metric Tons

	2010/11	2011/12	2012/13	2013/14	Oct 2014/15	Nov 2014/15
TY Imports						
North America	14,265	16,725	14,647	15,354	15,285	15,086
Central America	2,900	2,769	2,470	3,026	3,200	3,200
Caribbean	2,193	2,159	2,327	2,386	2,510	2,510
South America	10,536	11,968	11,804	13,436	13,300	13,300
European Union - 28	8,635	6,908	11,766	16,370	7,155	6,155
Former Soviet Union - 12	1,133	1,038	725	720	780	780
Middle East	18,690	23,348	24,922	25,720	26,755	26,840
North Africa	12,349	15,320	13,037	18,655	16,490	16,490
Sub-Saharan Africa	2,044	3,238	2,677	2,935	3,050	3,050
East Asia	33,888	38,040	36,163	45,198	43,870	44,185
Southeast Asia	7,558	7,317	8,058	10,550	9,280	9,280
Others	876	1,019	947	1,075	1,080	1,080
Total	115,067	129,849	129,543	155,425	142,755	141,956
Production						
North America	381,589	371,061	338,619	430,283	434,954	434,460
South America	106,037	117,970	135,044	129,974	123,201	122,701
European Union - 28	142,829	149,881	145,888	158,427	163,738	167,094
Other Europe	9,996	9,497	6,584	9,478	9,781	9,816
Former Soviet Union - 12	47,474	78,648	68,221	87,627	87,871	89,771
Middle East	19,574	20,398	18,232	20,767	16,478	16,563
North Africa	12,159	11,142	10,129	11,659	10,689	10,989
Sub-Saharan Africa	99,903	100,066	104,204	104,144	104,797	104,497
East Asia	185,731	200,748	214,647	227,518	226,108	223,108
South Asia	50,624	50,314	48,598	51,738	46,358	46,358
Southeast Asia	26,374	28,379	29,138	30,810	31,676	31,676
Oceania	12,030	12,813	12,082	13,011	11,867	11,867
Others	4,586	4,789	4,869	4,868	4,868	4,868
Total	1,098,906	1,155,706	1,136,255	1,280,304	1,272,386	1,273,768
Domestic Consumption						
North America	358,478	347,080	331,989	370,836	376,228	377,116
South America	84,079	85,283	89,413	94,304	97,596	97,496
European Union - 28	154,642	151,460	153,095	163,595	159,670	160,570
Other Europe	8,714	8,374	7,104	7,906	8,196	8,196
Former Soviet Union - 12	41,792	54,403	50,205	55,981	59,716	60,116
Middle East	38,540	40,949	42,798	44,921	45,951	45,911
North Africa	25,390	25,266	24,936	27,400	29,360	29,160
Sub-Saharan Africa	98,928	98,546	104,166	103,605	104,680	104,380
East Asia	221,781	228,692	243,025	262,046	270,361	267,276
South Asia	46,064	45,658	43,484	46,177	44,429	44,429
Southeast Asia	33,139	34,612	35,867	37,811	39,240	39,240
Oceania	7,495	6,518	6,132	6,193	6,517	6,517
Others	9,698	9,692	9,634	10,144	10,423	10,423
Total	1,128,740	1,136,533	1,141,848	1,230,919	1,252,367	1,250,830
Ending Stocks						
North America	37,878	33,066	28,239	42,604	61,719	60,687
South America	20,479	14,043	19,336	24,788	24,741	24,998
European Union - 28	16,733	15,579	12,852	15,374	17,192	18,698
Other Europe	1,455	1,023	611	1,192	1,127	1,162
Former Soviet Union - 12	5,480	6,160	5,037	6,794	7,583	8,379
Middle East	8,157	10,578	9,628	11,676	9,819	9,818
North Africa	4,784	5,447	3,456	5,626	3,623	4,325
Sub-Saharan Africa	10,514	11,420	10,889	10,453	10,150	10,150
East Asia	53,420	63,410	71,061	81,698	81,345	81,590
South Asia	3,086	2,974	2,819	4,085	2,879	2,879
Southeast Asia	3,508	3,061	3,225	4,180	4,077	4,276
Oceania	1,583	978	915	698	733	708
Others	793	792	752	854	979	979
Total	167,870	168,531	168,820	210,022	225,967	228,649

NOTES: Regional definitions appear on last page of this circular. Imports are reported on a trade year basis. All other data are reported using local marketing years.

World Corn Trade
October/September Year, Thousand Metric Tons

	2010/11	2011/12	2012/13	2013/14	2014/15 Oct	2014/15 Nov
TY Exports						
Argentina	15,198	16,501	22,789	12,808	13,500	12,500
Brazil	11,582	12,674	26,044	22,041	22,500	22,000
Burma	175	200	550	600	600	600
European Union	1,096	3,287	2,193	2,400	2,500	2,500
India	3,376	4,674	4,768	3,900	2,500	2,500
Paraguay	1,201	2,188	2,858	2,714	1,900	1,900
Russia	37	2,027	1,917	4,100	3,000	3,000
Serbia	2,004	2,331	601	1,800	2,500	2,500
South Africa	2,839	1,831	2,398	2,300	2,500	2,500
Ukraine	5,008	15,157	12,726	20,000	16,000	16,500
Others	4,031	4,464	5,407	6,227	4,040	4,040
Subtotal	46,547	65,334	82,251	78,890	71,540	70,540
United States	45,162	38,389	18,262	50,707	44,500	44,500
World Total	91,709	103,723	100,513	129,597	116,040	115,040
TY Imports						
Algeria	2,683	3,203	2,909	4,200	3,400	3,400
Brazil	287	937	871	846	800	800
Chile	526	906	844	1,500	1,300	1,300
China	979	5,231	2,702	3,277	3,000	2,500
Colombia	3,511	3,209	3,264	4,333	4,200	4,200
Cuba	838	746	911	900	900	900
Dominican Republic	999	1,054	1,046	1,100	1,200	1,200
Egypt	5,803	7,154	5,059	8,500	7,500	7,500
European Union	7,385	6,113	11,351	16,000	7,000	6,000
Guatemala	676	691	678	750	850	850
Indonesia	3,041	1,724	2,719	3,500	2,600	2,600
Iran	3,500	4,000	3,700	5,500	5,300	5,500
Israel	1,029	1,221	1,224	1,700	1,500	1,500
Japan	15,648	14,892	14,412	15,121	15,500	15,400
Korea, South	8,107	7,636	8,174	10,406	9,500	9,600
Malaysia	2,809	3,309	3,048	3,400	3,400	3,400
Mexico	8,252	11,172	5,676	10,954	10,900	10,900
Morocco	1,738	1,943	1,684	2,200	2,200	2,200
Peru	1,939	1,772	2,254	2,300	2,300	2,300
Saudi Arabia	1,933	1,816	2,063	2,600	2,900	2,900
Taiwan	4,134	4,341	4,232	4,400	4,200	4,200
Tunisia	677	853	846	1,000	900	900
Turkey	453	729	1,656	1,250	2,500	2,500
Venezuela	1,251	2,596	2,146	2,600	2,600	2,600
Vietnam	1,000	1,600	1,700	2,200	2,000	2,000
Others	11,099	11,565	9,393	11,679	12,285	12,160
Subtotal	90,297	100,413	94,562	122,216	110,735	109,310
Unaccounted	728	2,545	1,686	6,654	4,655	5,080
United States	684	765	4,265	727	650	650
World Total	91,709	103,723	100,513	129,597	116,040	115,040

TY=Trade Year, see Endnotes.

World Corn Production, Consumption, and Stocks
Local Marketing Years, Thousand Metric Tons

	2010/11	2011/12	2012/13	2013/14	2014/15 Oct	2014/15 Nov
Production						
Argentina	25,200	21,000	27,000	25,000	23,000	23,000
Brazil	57,400	73,000	81,500	79,300	75,000	75,000
Canada	12,043	11,359	13,060	14,200	11,500	11,500
China	177,245	192,780	205,614	218,490	217,000	214,000
Ethiopia	4,895	6,069	6,158	6,674	6,500	6,500
European Union	58,265	68,118	58,866	64,190	71,016	73,054
India	21,730	21,760	22,260	24,190	21,000	21,000
Indonesia	6,800	8,850	8,500	9,100	9,200	9,200
Mexico	21,058	18,726	21,591	22,960	22,500	23,000
Nigeria	8,800	9,250	7,630	7,700	7,500	7,500
Philippines	7,271	7,130	7,261	7,532	7,900	7,900
Russia	3,075	6,962	8,213	11,635	12,000	12,000
Serbia	6,800	6,400	3,750	6,400	6,850	6,850
South Africa	10,924	12,759	12,365	14,750	13,500	13,500
Ukraine	11,919	22,838	20,922	30,900	25,000	27,000
Others	86,329	88,368	90,084	92,450	93,546	93,351
Subtotal	519,754	575,369	594,774	635,471	623,012	624,355
United States	315,618	312,789	273,192	353,715	367,680	365,965
World Total	835,372	888,158	867,966	989,186	990,692	990,320
Total Consumption						
Argentina	7,300	7,000	7,900	8,700	9,200	9,200
Brazil	49,500	50,500	52,500	55,000	56,500	56,500
Canada	11,761	11,636	11,605	12,807	12,000	12,000
China	180,000	188,000	200,000	212,000	220,000	216,000
Egypt	12,500	11,700	12,000	13,200	13,800	13,800
European Union	64,900	69,500	69,600	76,000	75,500	76,500
India	18,100	17,200	17,500	19,500	19,500	19,500
Indonesia	9,800	10,500	10,900	11,900	12,000	12,000
Japan	15,700	14,900	14,500	15,100	15,500	15,400
Korea, South	8,214	7,815	8,481	9,900	9,900	10,100
Mexico	29,500	29,000	27,000	31,700	32,750	33,250
Philippines	7,200	7,400	7,400	8,000	8,400	8,400
Russia	3,200	4,700	6,400	7,500	9,000	9,000
South Africa	10,650	10,700	11,000	11,500	11,800	11,800
Ukraine	6,500	7,800	8,100	9,900	9,400	10,400
Others	133,602	140,387	141,096	148,143	153,082	152,632
Subtotal	567,402	605,779	601,721	658,587	670,704	669,279
United States	284,549	277,914	262,973	295,392	302,401	302,528
World Total	851,951	883,693	864,694	953,979	973,105	971,807
Ending Stocks						
Argentina	4,041	899	1,315	2,120	2,635	2,930
Brazil	10,278	9,212	14,150	17,750	17,050	17,550
China	49,415	59,335	67,570	77,315	77,335	77,715
European Union	5,222	6,666	5,090	6,880	6,896	6,934
Iran	2,790	3,386	2,486	2,986	2,886	3,086
Mexico	1,112	1,316	1,061	2,725	2,261	2,875
South Africa	3,418	3,676	3,064	3,339	2,864	2,864
Others	25,127	24,900	22,189	28,488	25,807	26,542
Subtotal	101,403	109,390	116,925	141,603	137,734	140,496
United States	28,644	25,122	20,859	31,388	52,850	51,008
World Total	130,047	134,512	137,784	172,991	190,584	191,504

Regional Corn Imports, Production, Consumption, and Stocks

Thousand Metric Tons

	2010/11	2011/12	2012/13	2013/14	Oct 2014/15	Nov 2014/15
TY Imports						
North America	9,920	12,684	10,434	12,352	12,250	12,250
Central America	2,889	2,766	2,470	3,025	3,200	3,200
South America	8,372	9,886	9,643	12,086	11,720	11,720
European Union - 28	7,385	6,113	11,351	16,000	7,000	6,000
Former Soviet Union - 12	329	328	324	415	415	415
Middle East	9,942	10,686	10,738	13,375	14,875	14,950
North Africa	11,265	13,799	11,145	16,550	14,700	14,700
Sub-Saharan Africa	1,547	2,581	2,005	2,220	2,390	2,390
East Asia	29,024	32,282	29,673	33,309	32,330	31,830
Southeast Asia	7,541	7,304	8,040	10,510	9,260	9,260
Caribbean	2,193	2,159	2,327	2,386	2,510	2,510
Others	574	590	677	715	735	735
Total	90,981	101,178	98,827	122,943	111,385	109,960
Production						
North America	348,719	342,874	307,843	390,875	401,680	400,465
South America	93,105	103,988	119,769	115,126	109,565	109,565
European Union - 28	58,265	68,118	58,866	64,190	71,016	73,054
Other Europe	8,291	7,810	4,915	7,733	8,031	8,066
Former Soviet Union - 12	18,434	34,121	32,310	46,898	40,660	42,660
Middle East	6,448	7,164	6,330	6,753	6,278	6,348
North Africa	6,780	5,722	5,891	6,001	5,951	5,951
Sub-Saharan Africa	57,860	62,092	60,564	63,652	63,246	62,946
East Asia	178,955	194,585	207,760	220,621	219,149	216,149
South Asia	27,663	28,536	29,705	31,830	28,660	28,660
Central America	3,549	3,698	3,740	3,743	3,743	3,743
Southeast Asia	26,135	28,138	28,893	30,565	31,431	31,431
Others	1,168	1,312	1,380	1,199	1,282	1,282
Total	835,372	888,158	867,966	989,186	990,692	990,320
Domestic Consumption						
North America	325,810	318,550	301,578	339,899	347,151	347,778
South America	73,773	74,971	78,381	82,970	85,820	85,720
European Union - 28	64,900	69,500	69,600	76,000	75,500	76,500
Other Europe	6,741	6,392	5,194	5,903	6,160	6,160
Former Soviet Union - 12	13,185	16,420	18,085	21,435	22,160	23,160
Middle East	16,885	17,348	18,131	19,010	21,335	21,285
North Africa	18,525	18,000	18,450	20,450	21,650	21,650
Sub-Saharan Africa	56,618	60,503	60,257	62,534	62,482	62,182
East Asia	209,870	217,047	229,434	243,380	251,885	247,985
South Asia	23,981	23,770	24,480	26,870	27,070	27,070
Southeast Asia	32,893	34,357	35,609	37,560	38,960	38,960
Central America	6,375	6,425	6,200	6,650	6,825	6,825
Others	3,420	3,369	3,556	3,581	3,735	3,735
Total	852,976	866,652	868,955	946,242	970,733	969,010
Ending Stocks						
North America	31,019	27,803	23,469	35,707	56,405	55,177
South America	18,106	12,708	17,413	22,077	21,889	22,652
European Union - 28	5,222	6,666	5,090	6,880	6,896	6,934
Other Europe	1,212	771	353	918	874	909
Former Soviet Union - 12	1,904	2,445	2,004	3,332	2,912	3,412
Middle East	3,918	4,548	3,491	4,299	4,012	4,217
North Africa	2,102	2,960	1,669	3,024	2,515	2,515
Sub-Saharan Africa	8,632	9,232	8,484	8,211	8,100	8,100
East Asia	52,082	61,836	69,729	80,257	79,744	80,151
South Asia	1,549	1,680	2,080	3,240	2,180	2,180
Southeast Asia	3,504	3,058	3,220	4,176	4,072	4,272
Central America	547	564	507	601	694	694
Others	250	241	275	269	291	291
Total	130,047	134,512	137,784	172,991	190,584	191,504

NOTES: Regional definitions appear on last page of this circular. Imports are reported on a trade year basis. All other data are reported using local marketing years.

World Barley Trade
October/September Year, Thousand Metric Tons

	2010/11	2011/12	2012/13	2013/14	2014/15 Oct	2014/15 Nov
TY Exports						
Argentina	1,531	3,631	3,647	2,829	2,000	2,000
Australia	4,088	5,819	4,621	6,262	4,300	4,300
Canada	1,052	1,437	1,316	1,714	1,000	1,200
European Union	4,581	3,646	6,473	4,800	6,500	6,700
India	30	52	542	500	300	300
Kazakhstan	224	659	151	500	400	400
Moldova	10	5	20	15	15	15
Russia	969	3,668	2,366	2,700	4,300	4,300
Serbia	9	14	26	25	25	25
Ukraine	2,446	2,166	2,659	3,700	2,700	2,700
Others	35	120	151	40	10	10
Subtotal	14,975	21,217	21,972	23,085	21,550	21,950
United States	222	179	163	336	250	250
World Total	15,197	21,396	22,135	23,421	21,800	22,200
TY Imports						
Algeria	262	479	364	700	600	600
Belarus	25	100	25	50	100	100
Brazil	362	274	369	400	400	400
China	1,656	2,541	2,184	4,891	4,000	4,500
Colombia	251	301	232	275	275	275
Iran	500	1,700	1,100	900	1,000	1,000
Israel	287	276	244	275	300	300
Japan	1,359	1,257	1,356	1,294	1,300	1,300
Jordan	544	736	831	950	650	650
Kuwait	317	376	388	400	400	400
Libya	179	183	573	500	550	550
Mexico	26	144	47	105	100	100
Morocco	222	536	147	400	500	500
Peru	83	97	103	100	100	100
Russia	411	372	278	125	100	100
Saudi Arabia	6,200	8,600	10,200	8,000	7,500	7,500
Syria	300	200	300	250	500	500
Tunisia	281	218	764	400	100	100
Turkey	39	46	266	750	750	750
United Arab Emirates	334	524	541	550	550	550
Others	1,259	1,428	951	908	935	935
Subtotal	14,897	20,388	21,263	22,223	20,710	21,210
Unaccounted	152	538	441	676	490	390
United States	148	470	431	522	600	600
World Total	15,197	21,396	22,135	23,421	21,800	22,200

TY=Trade Year, see Endnotes.

World Barley Production, Consumption, and Stocks
Local Marketing Years, Thousand Metric Tons

	2010/11	2011/12	2012/13	2013/14	2014/15 Oct	2014/15 Nov
Production						
Algeria	1,500	1,350	1,500	1,500	1,000	1,300
Argentina	2,950	4,500	5,000	4,750	3,400	3,400
Australia	7,995	8,221	7,472	9,545	7,600	7,600
Belarus	1,966	1,979	1,917	1,674	2,100	2,100
Canada	7,627	7,892	8,012	10,250	7,200	7,200
China	1,972	1,637	1,626	1,500	1,550	1,550
Ethiopia	1,703	1,592	1,782	1,933	1,800	1,800
European Union	53,691	51,883	54,896	59,638	59,261	59,768
India	1,350	1,660	1,620	1,750	1,810	1,810
Iran	3,580	2,900	3,400	3,200	3,200	3,200
Kazakhstan	1,313	2,593	1,500	2,539	2,600	2,500
Morocco	2,570	2,340	1,200	2,700	1,700	1,700
Russia	8,350	16,938	13,952	15,389	19,500	19,500
Turkey	5,900	7,000	5,500	7,300	4,000	4,000
Ukraine	8,484	9,098	6,935	7,561	9,400	9,400
Others	8,247	8,569	8,748	9,309	9,070	9,085
Subtotal	119,198	130,152	125,060	140,538	135,191	135,913
United States	3,924	3,370	4,768	4,719	3,928	3,849
World Total	123,122	133,522	129,828	145,257	139,119	139,762
Total Consumption						
Algeria	1,600	1,800	2,000	2,050	2,250	2,050
Argentina	1,135	1,200	1,300	1,600	1,600	1,600
Australia	4,200	3,300	3,000	3,300	3,200	3,200
Belarus	2,000	2,100	2,000	1,800	2,100	2,100
Canada	7,464	6,916	6,809	7,759	6,800	6,800
China	4,050	3,800	4,000	6,300	5,600	6,100
Ethiopia	1,725	1,600	1,725	1,950	1,850	1,850
European Union	56,610	51,200	51,000	53,400	51,200	51,200
Iran	3,900	4,100	4,600	4,500	4,300	4,300
Kazakhstan	1,475	1,825	1,375	2,000	2,200	2,100
Morocco	3,050	3,100	1,900	2,300	2,800	2,800
Russia	9,500	14,300	12,100	12,600	14,300	14,300
Saudi Arabia	6,325	7,225	8,325	8,425	8,325	8,325
Turkey	6,000	6,750	6,200	6,950	6,050	6,050
Ukraine	6,000	6,300	5,100	5,100	5,400	4,900
Others	14,894	15,778	16,138	16,789	16,734	16,734
Subtotal	131,683	131,048	127,043	136,403	135,630	135,180
United States	4,536	4,170	4,638	4,780	4,768	4,659
World Total	136,219	135,218	131,681	141,183	140,398	139,839
Ending Stocks						
Algeria	1,236	1,435	1,194	1,194	342	1,044
Canada	1,502	1,195	983	1,924	1,349	1,149
European Union	7,938	6,069	5,092	5,633	7,244	7,801
Iran	1,348	1,348	1,748	1,348	1,248	1,248
Russia	1,386	848	726	973	1,973	1,973
Saudi Arabia	1,323	2,814	3,006	4,096	3,453	3,286
Ukraine	794	1,172	873	883	1,088	1,388
Others	6,883	6,472	5,434	7,043	5,443	5,394
Subtotal	22,410	21,353	19,056	23,094	22,140	23,283
United States	1,945	1,306	1,750	1,786	1,490	1,520
World Total	24,355	22,659	20,806	24,880	23,630	24,803

11/10/2014 11:05:51 AM

Regional Barley Imports, Production, Consumption, and Stocks

Thousand Metric Tons

	2010/11	2011/12	2012/13	2013/14	Oct 2014/15	Nov 2014/15
TY Imports						
North America	227	620	499	636	725	725
South America	922	851	1,064	960	985	985
European Union - 28	288	364	52	75	50	50
Other Europe	189	209	127	175	175	175
Former Soviet Union - 12	648	697	375	280	340	340
Middle East	8,604	12,543	13,956	12,110	11,710	11,710
North Africa	960	1,458	1,885	2,050	1,775	1,775
Sub-Saharan Africa	77	105	57	100	80	80
East Asia	3,107	3,924	3,663	6,314	5,425	5,925
South Asia	8	68	7	30	30	30
Oceania	15	19	9	15	15	15
Total	15,045	20,858	21,694	22,745	21,310	21,810
Production						
North America	12,223	11,749	13,812	15,519	11,678	11,599
South America	3,869	5,530	6,084	5,880	4,545	4,545
European Union - 28	53,691	51,883	54,896	59,638	59,261	59,768
Other Europe	1,142	1,189	1,193	1,268	1,274	1,274
Former Soviet Union - 12	21,574	32,227	25,958	29,153	35,225	35,125
Middle East	11,474	11,691	10,302	12,449	8,635	8,650
North Africa	4,546	4,410	3,309	4,729	3,809	4,109
Sub-Saharan Africa	2,095	2,099	2,283	2,401	2,313	2,313
East Asia	2,215	1,939	1,928	1,810	1,852	1,852
South Asia	1,990	2,267	2,152	2,457	2,517	2,517
Oceania	8,303	8,538	7,911	9,953	8,010	8,010
Total	123,122	133,522	129,828	145,257	139,119	139,762
Domestic Consumption						
North America	12,700	11,786	12,347	13,239	12,268	12,159
South America	2,936	3,077	3,327	3,661	3,695	3,695
European Union - 28	56,610	51,200	51,000	53,400	51,200	51,200
Other Europe	1,339	1,366	1,298	1,423	1,422	1,422
Former Soviet Union - 12	20,587	26,293	22,314	23,500	25,775	25,175
Middle East	19,884	22,016	22,785	24,196	22,871	22,871
North Africa	5,882	6,186	5,555	5,980	6,778	6,578
Sub-Saharan Africa	2,212	2,138	2,290	2,512	2,420	2,420
East Asia	5,772	5,555	5,806	8,055	7,355	7,855
South Asia	1,992	2,197	2,063	1,912	2,068	2,068
Oceania	4,550	3,650	3,425	3,725	3,625	3,625
Total	134,464	135,464	132,210	141,603	139,477	139,068
Ending Stocks						
North America	3,647	2,621	3,014	3,941	3,020	2,850
South America	818	547	685	1,055	890	890
European Union - 28	7,938	6,069	5,092	5,633	7,244	7,801
Other Europe	193	204	227	221	223	223
Former Soviet Union - 12	2,813	2,735	2,193	2,463	3,742	4,038
Middle East	4,162	5,933	6,042	7,294	5,734	5,528
North Africa	2,612	2,426	1,720	2,528	1,027	1,729
Sub-Saharan Africa	232	283	330	319	292	292
East Asia	680	984	768	837	765	759
South Asia	220	281	144	255	259	259
Oceania	1,040	576	591	334	434	434
Total	24,355	22,659	20,806	24,880	23,630	24,803

NOTES: Regional definitions appear on last page of this circular. Imports are reported on a trade year basis. All other data are reported using local marketing years.

World Sorghum Trade
October/September Year, Thousand Metric Tons

	2010/11	2011/12	2012/13	2013/14	2014/15 Oct	2014/15 Nov
TY Exports						
Argentina	1,893	2,163	3,059	953	1,300	1,300
Australia	575	1,185	1,425	405	800	800
Ethiopia	75	75	75	75	75	75
India	31	132	231	75	50	50
Nigeria	60	75	50	50	50	50
Ukraine	34	113	124	230	150	150
Uruguay	0	23	26	30	30	30
Others	147	139	149	163	135	135
Subtotal	2,815	3,905	5,139	1,981	2,590	2,590
United States	3,823	1,549	2,136	5,843	5,300	5,600
World Total	6,638	5,454	7,275	7,824	7,890	8,190
TY Imports						
Botswana	30	25	50	50	50	50
Chile	729	544	404	150	250	250
China	4	84	631	4,161	4,300	4,600
Colombia	391	592	591	150	250	250
Japan	1,418	1,481	1,897	1,100	1,500	1,500
Kenya	11	74	102	100	100	100
Mexico	2,379	1,369	1,789	162	300	100
Saudi Arabia	5	69	127	100	100	100
Sudan	200	125	175	100	200	200
Taiwan	97	84	116	100	100	100
Others	1,462	626	746	806	415	415
Subtotal	6,726	5,073	6,628	6,979	7,565	7,665
Unaccounted	-89	378	404	842	325	524
United States	1	3	243	3	0	1
World Total	6,638	5,454	7,275	7,824	7,890	8,190

TY=Trade Year, see Endnotes.

World Sorghum Production, Consumption, and Stocks
Local Marketing Years, Thousand Metric Tons

	2010/11	2011/12	2012/13	2013/14	2014/15 Oct	2014/15 Nov
Production						
Argentina	4,400	4,200	4,700	4,200	4,200	3,700
Australia	1,935	2,239	2,230	1,107	2,000	2,000
Brazil	2,314	2,222	2,102	2,400	2,400	2,400
Burkina	1,990	1,500	1,924	1,940	1,900	1,900
Cameroon	1,099	1,150	1,100	1,150	1,150	1,150
Chad	680	648	1,172	745	900	900
China	2,456	2,051	2,556	2,700	2,700	2,700
Ethiopia	3,960	3,951	3,604	4,338	4,000	4,000
India	7,000	6,030	5,300	5,250	5,000	5,000
Mali	1,257	1,191	1,212	820	1,300	1,300
Mexico	7,385	6,425	6,174	8,500	7,000	7,700
Niger	1,300	807	1,376	1,287	1,200	1,200
Nigeria	6,750	6,900	5,943	6,500	6,300	6,300
Sudan	2,630	4,605	4,524	2,249	3,500	3,500
Tanzania	800	807	839	832	840	840
Others	6,432	7,047	6,732	7,039	6,944	6,947
Subtotal	52,388	51,773	51,488	51,057	51,334	51,537
United States	8,775	5,410	6,293	9,882	10,250	10,362
World Total	61,163	57,183	57,781	60,939	61,584	61,899
Total Consumption						
Argentina	1,900	1,900	2,300	2,700	2,800	2,800
Australia	1,405	1,105	1,105	805	1,205	1,205
Brazil	2,075	2,175	2,300	2,300	2,300	2,300
Burkina	1,900	1,500	1,900	1,900	1,900	1,900
Cameroon	1,109	1,175	1,110	1,175	1,175	1,175
Chad	700	650	1,150	850	900	900
China	2,200	2,200	3,200	6,800	6,900	7,200
Ethiopia	3,700	3,700	3,700	4,200	4,200	4,200
India	6,800	6,000	5,150	5,200	4,900	4,900
Japan	1,460	1,475	1,900	1,100	1,500	1,500
Mali	1,300	1,300	1,200	950	1,200	1,200
Mexico	9,400	8,100	8,100	8,300	7,300	7,800
Niger	1,250	950	1,200	1,300	1,300	1,300
Nigeria	6,700	6,800	5,900	6,450	6,250	6,250
Sudan	3,000	4,500	4,700	2,550	3,700	3,700
Others	9,765	9,476	9,165	8,520	8,685	8,685
Subtotal	54,679	54,510	52,856	55,819	56,658	57,611
United States	5,277	3,916	4,796	4,025	4,572	4,444
World Total	59,956	58,426	57,652	59,844	61,230	62,055
Ending Stocks						
Argentina	950	167	784	1,084	1,284	784
Brazil	425	472	272	361	467	461
China	467	366	326	376	591	451
Ethiopia	354	560	439	602	377	377
Mexico	724	418	281	643	251	643
Nigeria	190	215	208	208	208	208
Sudan	399	609	588	382	377	377
Others	1,673	1,246	1,482	1,340	1,460	1,462
Subtotal	5,182	4,053	4,380	4,996	5,015	4,763
United States	697	583	385	864	954	941
World Total	5,879	4,636	4,765	5,860	5,969	5,704

Regional Sorghum Imports, Production, Consumption, and Stocks

Thousand Metric Tons

	2010/11	2011/12	2012/13	2013/14	Oct 2014/15	Nov 2014/15
TY Imports						
North America	2,380	1,372	2,032	165	300	101
South America	1,218	1,200	1,071	360	565	565
European Union - 28	922	126	291	200	50	50
Other Europe	0	0	0	0	0	0
Middle East	121	101	194	200	155	155
North Africa	120	54	0	45	5	5
Sub-Saharan Africa	405	541	604	590	555	555
East Asia	1,523	1,655	2,650	5,366	5,905	6,205
Southeast Asia	17	13	18	40	20	20
Others	21	14	11	16	10	10
Total	6,727	5,076	6,871	6,982	7,565	7,666
Production						
North America	16,160	11,835	12,467	18,382	17,250	18,062
Central America	287	312	339	335	335	335
Caribbean	128	128	128	128	128	128
South America	7,351	7,124	7,484	7,342	7,362	6,862
European Union - 28	629	671	495	615	713	716
Middle East	853	764	814	800	800	800
North Africa	708	847	763	763	763	763
Sub-Saharan Africa	23,392	24,804	24,793	23,063	24,149	24,149
East Asia	2,460	2,054	2,560	2,704	2,704	2,704
South Asia	7,145	6,175	5,445	5,395	5,145	5,145
Southeast Asia	54	54	55	55	55	55
Oceania	1,935	2,239	2,230	1,107	2,000	2,000
Others	61	176	208	250	180	180
Total	61,163	57,183	57,781	60,939	61,584	61,899
Domestic Consumption						
North America	14,677	12,016	12,896	12,325	11,872	12,244
Central America	300	320	325	335	335	335
Caribbean	128	128	128	128	128	128
South America	5,739	6,006	6,085	6,077	6,412	6,412
European Union - 28	1,535	760	795	795	770	770
Middle East	962	789	1,052	910	960	960
North Africa	857	908	756	794	756	756
Sub-Saharan Africa	23,528	24,841	25,060	23,501	24,664	24,664
East Asia	3,764	3,771	5,221	8,010	8,510	8,810
South Asia	6,955	6,155	5,305	5,359	5,055	5,055
Southeast Asia	61	68	68	61	90	90
Oceania	1,405	1,105	1,105	805	1,205	1,205
Others	30	55	80	25	30	30
Total	59,941	56,922	58,876	59,125	60,787	61,459
Ending Stocks						
North America	1,421	1,001	666	1,507	1,205	1,584
Central America	32	25	39	40	40	40
South America	1,429	695	1,107	1,526	1,852	1,346
European Union - 28	21	14	27	38	26	29
Middle East	35	56	65	58	53	53
North Africa	69	60	66	73	80	80
Sub-Saharan Africa	1,626	1,864	2,018	1,871	1,706	1,706
East Asia	549	451	413	462	676	536
South Asia	327	223	145	120	170	170
Oceania	361	230	195	147	142	142
Others	9	17	24	18	19	18
Total	5,879	4,636	4,765	5,860	5,969	5,704

NOTES: Regional definitions appear on last page of this circular. Imports are reported on a trade year basis. All other data are reported using local marketing years.

World Oats Trade
October/September Year, Thousand Metric Tons

	2010/11	2011/12	2012/13	2013/14	2014/15 Oct	2014/15 Nov
TY Exports						
Argentina	6	12	1	5	5	5
Australia	209	174	240	235	200	225
Brazil	9	3	6	5	5	5
Canada	1,496	1,763	1,359	1,728	1,700	1,700
Chile	129	106	42	50	100	100
European Union	113	176	126	300	250	250
Russia	1	18	4	10	10	10
Others	4	6	6	10	10	10
Subtotal	1,967	2,258	1,784	2,343	2,280	2,305
United States	37	28	18	28	30	30
World Total	2,004	2,286	1,802	2,371	2,310	2,335
TY Imports						
Albania	5	0	0	0	0	0
Algeria	4	9	7	10	10	10
Argentina	0	0	0	0	0	0
Bosnia and Herzegovina	3	3	2	5	5	5
Canada	19	11	9	26	10	10
China	58	68	87	116	100	125
Colombia	2	1	1	5	5	5
Ecuador	11	22	19	20	20	20
European Union	4	3	4	5	5	5
Japan	64	54	51	46	50	50
Mexico	103	134	111	110	100	100
Norway	7	49	36	50	40	40
South Africa	15	11	11	25	25	25
Switzerland	49	56	46	50	50	50
Uruguay	11	8	6	5	5	5
Others	12	13	2	0	0	0
Subtotal	367	442	392	473	425	450
Unaccounted	169	114	69	37	185	185
United States	1,468	1,730	1,341	1,861	1,700	1,700
World Total	2,004	2,286	1,802	2,371	2,310	2,335

TY=Trade Year, see Endnotes.

World Oats Production, Consumption, and Stocks
Local Marketing Years, Thousand Metric Tons

	2010/11	2011/12	2012/13	2013/14	2014/15 Oct	2014/15 Nov
Production						
Algeria	88	67	110	110	110	110
Argentina	660	345	496	445	460	460
Australia	1,128	1,262	1,121	1,326	1,150	1,150
Belarus	442	448	422	352	450	450
Brazil	379	354	361	380	380	380
Canada	2,451	3,158	2,812	3,890	2,685	2,685
Chile	564	451	680	610	700	700
China	525	600	600	580	600	600
European Union	7,500	7,927	7,906	8,380	8,094	8,018
Kazakhstan	134	258	200	305	250	250
Mexico	111	51	84	90	90	90
Norway	299	231	236	236	236	236
Russia	3,218	5,332	4,027	4,932	5,000	5,000
Turkey	204	218	210	210	210	210
Ukraine	458	506	630	467	580	580
Others	296	372	315	327	327	327
Subtotal	18,457	21,580	20,210	22,640	21,322	21,246
United States	1,188	728	892	938	1,023	1,011
World Total	19,645	22,308	21,102	23,578	22,345	22,257
Total Consumption						
Algeria	89	75	119	120	120	120
Argentina	650	350	500	425	475	475
Australia	900	1,100	925	1,025	1,000	1,000
Belarus	475	450	400	375	425	425
Brazil	370	350	350	375	375	375
Canada	1,530	1,361	1,513	1,730	1,450	1,450
Chile	475	325	575	575	600	600
China	625	625	675	700	700	725
European Union	7,793	7,800	7,700	8,200	7,800	7,800
Kazakhstan	130	225	225	275	250	250
Mexico	185	185	195	185	190	190
Norway	295	270	295	270	295	295
Russia	3,450	5,000	4,300	4,900	5,000	5,000
Turkey	210	215	215	215	215	215
Ukraine	475	500	600	475	575	575
Others	467	519	451	491	489	489
Subtotal	18,124	19,589	19,136	20,479	20,119	20,144
United States	2,799	2,499	2,743	2,759	2,624	2,623
World Total	20,923	22,088	21,879	23,238	22,743	22,767
Ending Stocks						
Argentina	76	57	51	66	46	46
Australia	146	134	60	161	111	86
Canada	733	805	506	1,031	576	576
China	84	127	139	135	144	135
European Union	832	796	899	767	816	740
Russia	167	485	203	229	219	219
Ukraine	40	52	81	67	67	67
Others	169	196	206	197	198	191
Subtotal	2,247	2,652	2,145	2,653	2,177	2,060
United States	982	797	527	359	453	442
World Total	3,229	3,449	2,672	3,012	2,630	2,502

Regional Oats Imports, Production, Consumption, and Stocks

Thousand Metric Tons

	2010/11	2011/12	2012/13	2013/14	Oct 2014/15	Nov 2014/15
TY Imports						
North America	1,590	1,875	1,461	1,997	1,810	1,810
South America	24	31	26	30	30	30
European Union - 28	4	3	4	5	5	5
Other Europe	66	110	86	105	95	95
Former Soviet Union - 12	6	7	0	0	0	0
Middle East	4	4	0	0	0	0
North Africa	4	9	7	10	10	10
Sub-Saharan Africa	15	11	11	25	25	25
East Asia	122	122	138	162	150	175
Oceania	0	0	0	0	0	0
Total	1,835	2,172	1,733	2,334	2,125	2,150
Production						
North America	3,750	3,937	3,788	4,918	3,798	3,786
South America	1,644	1,191	1,577	1,478	1,585	1,585
European Union - 28	7,500	7,927	7,906	8,380	8,094	8,018
Other Europe	428	373	369	370	369	369
Former Soviet Union - 12	4,257	6,549	5,285	6,062	6,286	6,286
Middle East	204	218	210	210	210	210
North Africa	125	163	166	166	166	166
Sub-Saharan Africa	34	57	60	55	55	55
East Asia	527	602	602	582	602	602
Oceania	1,176	1,291	1,139	1,357	1,180	1,180
Total	19,645	22,308	21,102	23,578	22,345	22,257
Domestic Consumption						
North America	4,514	4,045	4,451	4,674	4,264	4,263
South America	1,563	1,092	1,490	1,448	1,525	1,525
European Union - 28	7,793	7,800	7,700	8,200	7,800	7,800
Other Europe	486	478	474	453	487	487
Former Soviet Union - 12	4,535	6,180	5,531	6,031	6,256	6,256
Middle East	210	215	215	215	215	215
North Africa	126	172	175	176	176	176
Sub-Saharan Africa	58	53	72	92	80	80
East Asia	685	685	730	750	750	775
Oceania	948	1,129	943	1,056	1,030	1,030
Total	20,918	21,849	21,781	23,095	22,583	22,607
Ending Stocks						
North America	1,720	1,605	1,034	1,393	1,035	1,021
South America	126	93	131	130	110	110
European Union - 28	832	796	899	767	816	740
Other Europe	50	48	31	53	30	30
Former Soviet Union - 12	235	592	332	346	356	356
Middle East	10	17	12	7	2	2
North Africa	1	1	1	1	1	1
Sub-Saharan Africa	14	29	28	16	16	16
East Asia	95	134	144	138	153	140
Oceania	146	134	60	161	111	86
Total	3,229	3,449	2,672	3,012	2,630	2,502

NOTES: Regional definitions appear on last page of this circular. Imports are reported on a trade year basis. All other data are reported using local marketing years.

World Rye Trade
October/September Year, Thousand Metric Tons

	2010/11	2011/12	2012/13	2013/14	2014/15 Oct	2014/15 Nov
TY Exports						
Belarus	150	25	25	25	25	25
Canada	221	159	181	96	100	100
European Union	71	59	122	175	150	150
Russia	22	284	78	80	100	100
Ukraine	2	9	16	60	5	5
Others	3	4	0	0	0	0
Subtotal	469	540	422	436	380	380
United States	3	8	7	6	5	5
World Total	472	548	429	442	385	385
TY Imports						
European Union	36	302	68	90	50	50
Israel	19	11	34	35	15	25
Japan	101	46	27	37	50	40
Korea, South	11	11	12	10	10	10
Norway	12	11	21	15	15	15
Russia	150	0	25	25	25	25
Switzerland	2	2	9	5	5	5
Others	0	8	1	0	0	0
Subtotal	331	391	197	217	170	170
Unaccounted	-7	-17	11	21	15	15
United States	148	174	221	204	200	200
World Total	472	548	429	442	385	385

TY=Trade Year, see Endnotes.

World Rye Production, Consumption, and Stocks
Local Marketing Years, Thousand Metric Tons

	2010/11	2011/12	2012/13	2013/14	2014/15 Oct	2014/15 Nov
Production						
Belarus	735	801	1,082	648	800	800
Canada	237	241	337	210	190	190
Chile	2	59	62	60	70	70
European Union	7,576	6,900	8,762	10,188	9,229	8,843
Russia	1,642	2,967	2,132	3,360	3,500	3,500
Turkey	365	366	370	350	350	350
Ukraine	464	579	676	638	450	450
Others	197	181	183	168	163	163
Subtotal	11,218	12,094	13,604	15,622	14,752	14,366
United States	190	154	166	194	183	183
World Total	11,408	12,248	13,770	15,816	14,935	14,549
Total Consumption						
Argentina	40	45	40	52	40	40
Belarus	650	750	1,000	650	750	750
Canada	136	101	124	90	95	95
Chile	2	59	62	60	70	70
European Union	8,204	7,400	8,700	9,700	9,300	8,900
Japan	105	55	25	40	50	40
Kazakhstan	40	30	50	40	50	50
Russia	1,850	2,850	2,000	3,100	3,500	3,500
Turkey	350	375	375	350	350	350
Ukraine	650	625	625	625	475	475
Others	155	142	170	138	118	128
Subtotal	12,216	12,406	13,205	14,849	14,785	14,385
United States	331	311	387	424	403	402
World Total	12,547	12,717	13,592	15,273	15,188	14,787
Ending Stocks						
Belarus	79	110	167	140	165	165
Canada	51	25	46	49	44	44
European Union	1,013	745	792	1,188	1,017	1,031
Kazakhstan	5	3	3	6	6	6
Russia	250	129	153	365	290	290
Turkey	32	24	18	18	18	18
Ukraine	189	132	166	128	98	98
Others	14	5	7	4	7	4
Subtotal	1,633	1,173	1,352	1,898	1,645	1,656
United States	20	11	10	7	10	11
World Total	1,653	1,184	1,362	1,905	1,655	1,667

Regional Rye Imports, Production, Consumption, and Stocks

Thousand Metric Tons

	2010/11	2011/12	2012/13	2013/14	Oct 2014/15	Nov 2014/15
TY Imports						
North America	148	174	221	204	200	200
South America	0	0	0	0	0	0
European Union - 28	36	302	68	90	50	50
Other Europe	14	13	31	20	20	20
Former Soviet Union - 12	150	5	25	25	25	25
Middle East	19	14	34	35	15	25
Sub-Saharan Africa	0	0	0	0	0	0
East Asia	112	57	39	47	60	50
Oceania	0	0	0	0	0	0
Total	479	565	418	421	370	370
Production						
North America	427	395	503	404	373	373
South America	45	107	105	115	113	113
European Union - 28	7,576	6,900	8,762	10,188	9,229	8,843
Other Europe	76	62	47	47	47	47
Former Soviet Union - 12	2,883	4,375	3,940	4,689	4,800	4,800
Middle East	365	366	370	350	350	350
Sub-Saharan Africa	3	3	3	3	3	3
East Asia	0	0	0	0	0	0
Oceania	33	40	40	20	20	20
Total	11,408	12,248	13,770	15,816	14,935	14,549
Domestic Consumption						
North America	467	412	511	514	498	497
South America	45	107	105	115	113	113
European Union - 28	8,204	7,400	8,700	9,700	9,300	8,900
Other Europe	89	75	78	67	67	67
Former Soviet Union - 12	3,190	4,255	3,675	4,415	4,775	4,775
Middle East	369	386	409	385	365	375
Sub-Saharan Africa	3	2	3	3	3	3
East Asia	116	66	37	50	60	50
Oceania	30	40	40	20	20	20
Total	12,513	12,743	13,558	15,269	15,201	14,800
Ending Stocks						
North America	71	36	56	56	54	55
South America	0	0	0	0	0	0
European Union - 28	1,013	745	792	1,188	1,017	1,031
Other Europe	0	0	0	0	0	0
Former Soviet Union - 12	523	374	489	639	559	559
Middle East	32	24	18	18	18	18
Sub-Saharan Africa	0	0	0	0	0	0
East Asia	14	5	7	4	7	4
Oceania	0	0	0	0	0	0
Total	1,653	1,184	1,362	1,905	1,655	1,667

NOTES: Regional definitions appear on last page of this circular. Imports are reported on a trade year basis. All other data are reported using local marketing years.



HISTORICAL DATA SERIES FOR SELECTED REGIONS AND COUNTRIES

CONTENTS

European Union: Grain Supply and Demand	37
China: Grain Supply and Demand	38
Other Europe: Grain Supply and Demand	39
Former Soviet Union: Grain Supply and Demand.....	40
Wheat Supply and Disappearance: Selected Exporters	44
Corn Supply and Disappearance: Selected Exporters.....	46
Barley Supply and Disappearance: Selected Exporters	48
Sorghum Supply and Disappearance: Selected Exporters	49
U.S. Grains: Supply and Distribution.....	50
Total Wheat and Coarse Grains: Supply and Demand	51
World Wheat and Coarse Grains: Supply and Demand	52
World Corn and Barley: Supply and Demand	53
World Rice: Supply and Demand	54

European Union: Grain Supply and Demand

Wheat and Coarse Grains Millions of Metric Tons/Hectares

	Area Harvested	Yield	Production	Imports	Exports	Feed Dom. Consumpti	Domestic Consumpti	Ending Stocks
Wheat								
2003/04	24.5	4.5	111.4	7.4	9.9	52.5	115.8	12.0
2004/05	26.2	5.6	147.7	7.1	14.7	59.3	123.9	28.3
2005/06	26.0	5.1	132.9	6.8	15.7	63.0	128.2	24.0
2006/07	24.7	5.1	125.7	5.2	13.9	60.2	126.2	14.8
2007/08	24.9	4.9	120.8	6.8	12.4	52.4	117.2	12.8
2008/09	26.8	5.7	151.9	7.7	25.4	60.5	127.6	19.4
2009/10	26.0	5.4	139.7	5.4	22.3	57.5	125.6	16.6
2010/11	26.0	5.3	136.7	4.6	23.1	52.5	122.8	11.9
2011/12	25.8	5.3	138.2	7.4	16.7	57.5	127.2	13.5
2012/13	25.9	5.2	133.9	5.3	22.7	51.0	119.3	10.7
2013/14	25.8	5.6	143.1	4.0	31.9	48.0	115.8	10.2
2014/15	26.8	5.8	155.4	5.0	28.0	57.5	126.0	16.6
Coarse Grains								
2003/04	33.2	4.0	134.1	8.2	4.0	111.9	147.7	13.6
2004/05	33.9	5.0	169.1	3.0	4.8	118.9	155.2	25.6
2005/06	33.2	4.5	149.5	2.7	4.3	112.4	150.7	22.8
2006/07	32.4	4.3	140.0	8.1	4.5	112.9	150.6	15.6
2007/08	32.6	4.3	138.7	20.3	4.5	121.6	157.1	13.0
2008/09	34.0	4.8	164.9	3.1	5.7	116.1	154.2	21.3
2009/10	32.9	4.8	157.5	2.9	3.0	114.8	152.4	26.2
2010/11	30.2	4.7	142.8	8.5	6.2	116.9	154.6	16.7
2011/12	30.2	5.0	149.9	7.0	6.5	113.2	151.5	15.6
2012/13	31.3	4.7	145.9	11.8	7.4	113.7	153.1	12.9
2013/14	31.3	5.1	158.4	16.3	8.6	121.9	163.6	15.4
2014/15	31.0	5.4	167.1	6.2	9.4	118.4	160.6	18.7
Wheat and Coarse Grains								
2003/04	57.7	4.3	245.5	15.6	13.9	164.3	263.5	25.6
2004/05	60.1	5.3	316.8	10.0	19.5	178.2	279.1	53.9
2005/06	59.1	4.8	282.3	9.4	20.0	175.4	278.9	46.8
2006/07	57.0	4.7	265.7	13.2	18.5	173.1	276.8	30.4
2007/08	57.5	4.5	259.5	27.1	16.9	174.1	274.2	25.9
2008/09	60.9	5.2	316.8	10.8	31.1	176.6	281.8	40.6
2009/10	58.9	5.0	297.3	8.2	25.3	172.3	278.0	42.8
2010/11	56.2	5.0	279.5	13.1	29.3	169.4	277.5	28.7
2011/12	56.0	5.1	288.1	14.3	23.3	170.7	278.7	29.1
2012/13	57.3	4.9	279.7	17.1	30.0	164.7	272.3	23.6
2013/14	57.1	5.3	301.6	20.3	40.6	169.9	279.3	25.5
2014/15	57.8	5.6	322.5	11.2	37.4	175.9	286.6	35.3

China: Grain Supply and Demand

Wheat and Coarse Grains Millions of Metric Tons/Hectares

	Area Harvested	Yield	Production	Imports	Exports	Feed Dom. Consumpti	Domestic Consumpti	Ending Stocks
Wheat								
2003/04	22.0	3.9	86.5	3.7	2.8	6.0	104.5	43.3
2004/05	21.6	4.3	92.0	6.7	1.2	4.0	102.0	38.8
2005/06	22.8	4.3	97.4	1.1	1.4	3.5	101.5	34.5
2006/07	23.6	4.6	108.5	0.4	2.8	4.0	102.0	38.6
2007/08	23.7	4.6	109.3	0.0	2.8	8.0	106.0	39.1
2008/09	23.6	4.8	112.5	0.5	0.7	8.0	105.5	45.8
2009/10	24.3	4.7	115.1	1.4	0.9	10.0	107.0	54.4
2010/11	24.3	4.7	115.2	0.9	0.9	13.0	110.5	59.1
2011/12	24.3	4.8	117.4	2.9	1.0	24.0	122.5	55.9
2012/13	24.3	5.0	121.0	3.0	1.0	25.0	125.0	54.0
2013/14	24.1	5.1	121.9	6.8	0.9	21.0	121.5	60.3
2014/15	24.1	5.2	126.0	1.7	1.0	23.0	124.0	63.0
Coarse Grains								
2003/04	26.8	4.6	124.0	1.5	7.7	99.1	138.3	45.9
2004/05	28.0	4.9	138.3	2.1	7.6	100.3	141.1	37.6
2005/06	28.8	5.1	147.8	2.3	3.8	103.5	147.1	36.8
2006/07	30.9	5.1	159.1	1.2	5.5	104.9	153.6	38.0
2007/08	31.9	5.0	159.2	1.2	0.9	106.7	157.9	39.5
2008/09	32.2	5.4	172.4	1.7	0.2	109.1	161.2	52.2
2009/10	33.4	5.1	169.8	3.8	0.2	119.1	173.3	52.3
2010/11	34.6	5.3	183.8	2.7	0.2	128.8	188.4	50.1
2011/12	35.5	5.6	198.6	7.9	0.1	132.0	196.2	60.4
2012/13	37.1	5.7	212.2	5.6	0.1	146.1	209.7	68.4
2013/14	38.4	5.9	225.1	12.4	0.0	161.8	227.6	78.3
2014/15	38.9	5.7	220.7	11.7	0.1	165.8	231.8	78.7
Wheat and Coarse Grains								
2003/04	48.8	4.3	210.5	5.3	10.5	105.1	242.8	89.2
2004/05	49.6	4.6	230.2	8.8	8.8	104.3	243.1	76.4
2005/06	51.6	4.7	245.2	3.4	5.2	107.0	248.6	71.3
2006/07	54.5	4.9	267.6	1.5	8.2	108.9	255.6	76.6
2007/08	55.6	4.8	268.5	1.2	3.7	114.7	263.9	78.6
2008/09	55.8	5.1	284.9	2.1	0.9	117.1	266.7	98.0
2009/10	57.6	4.9	284.9	5.2	1.1	129.1	280.3	106.7
2010/11	58.9	5.1	299.0	3.6	1.1	141.8	298.9	109.2
2011/12	59.8	5.3	316.0	10.9	1.1	156.0	318.7	116.3
2012/13	61.3	5.4	333.2	8.6	1.1	171.1	334.7	122.3
2013/14	62.5	5.6	347.0	19.2	0.9	182.8	349.1	138.5
2014/15	63.0	5.5	346.7	13.4	1.1	188.8	355.8	141.7

Other Europe: Grain Supply and Demand

Wheat and Coarse Grains Millions of Metric Tons/Hectares

	Area Harvested	Yield	Production	Imports	Exports	Feed Dom. Consumpti	Domestic Consumpti	Ending Stocks
Wheat								
2003/04	1.0	2.7	2.8	1.4	0.0	0.6	4.5	0.7
2004/05	1.1	4.3	4.6	1.4	0.3	0.9	5.2	1.3
2005/06	1.0	3.8	3.8	1.4	0.2	0.9	5.1	1.1
2006/07	1.0	3.6	3.5	1.5	0.3	0.7	4.6	1.2
2007/08	1.0	3.8	3.7	1.9	0.5	1.0	4.8	1.5
2008/09	0.9	4.4	4.0	1.7	0.4	1.2	5.1	1.7
2009/10	1.0	3.9	3.8	1.7	0.5	1.1	5.0	1.7
2010/11	0.9	3.7	3.2	1.6	0.6	0.9	4.7	1.2
2011/12	0.9	4.2	3.6	1.9	0.5	1.0	4.9	1.3
2012/13	0.9	4.1	3.5	1.6	0.7	1.0	4.7	1.0
2013/14	1.0	4.6	4.4	1.8	1.3	1.2	4.9	1.1
2014/15	0.9	4.4	3.9	1.9	0.9	1.2	4.9	1.1
Coarse Grains								
2003/04	2.1	3.1	6.6	0.7	0.1	6.9	7.9	0.7
2004/05	2.1	5.0	10.4	0.5	0.6	8.4	9.5	1.5
2005/06	2.1	4.8	10.2	0.6	1.3	8.6	9.8	1.3
2006/07	2.0	4.9	9.9	0.8	0.9	8.6	9.7	1.3
2007/08	2.0	3.4	6.9	0.9	0.1	6.8	7.9	1.1
2008/09	2.1	4.6	9.7	0.6	1.5	7.6	8.7	1.1
2009/10	2.0	4.9	9.7	0.7	1.4	7.5	8.7	1.4
2010/11	2.0	5.0	10.0	0.7	2.0	7.3	8.7	1.5
2011/12	2.1	4.6	9.5	0.8	2.4	7.0	8.4	1.0
2012/13	2.1	3.2	6.6	0.7	0.6	5.9	7.1	0.6
2013/14	2.0	4.7	9.5	0.8	1.8	6.6	7.9	1.2
2014/15	2.0	4.8	9.8	0.9	2.5	6.9	8.2	1.2
Wheat and Coarse Grains								
2003/04	3.1	3.0	9.4	2.0	0.1	7.4	12.4	1.4
2004/05	3.2	4.8	15.1	1.9	0.9	9.3	14.8	2.8
2005/06	3.1	4.5	14.0	2.0	1.4	9.5	14.9	2.4
2006/07	3.0	4.5	13.4	2.3	1.2	9.3	14.3	2.5
2007/08	3.0	3.5	10.6	2.7	0.6	7.8	12.6	2.6
2008/09	3.0	4.6	13.7	2.3	1.9	8.8	13.8	2.8
2009/10	3.0	4.5	13.5	2.4	1.9	8.5	13.7	3.2
2010/11	2.9	4.6	13.2	2.4	2.6	8.1	13.4	2.6
2011/12	2.9	4.5	13.1	2.7	2.9	8.1	13.2	2.4
2012/13	2.9	3.4	10.1	2.4	1.3	6.9	11.8	1.7
2013/14	3.0	4.6	13.9	2.7	3.1	7.9	12.8	2.3
2014/15	2.9	4.7	13.7	2.8	3.4	8.1	13.1	2.2

Former Soviet Union: Grain Supply and Demand

Wheat and Coarse Grains Millions of Metric Tons/Hectares

	Area Harvested	Yield	Production	Imports	Exports	Feed Dom. Consumpti	Domestic Consumpti	Ending Stocks
Wheat								
2008/09	50.6	2.3	115.5	6.6	38.2	25.2	76.5	21.9
2009/10	52.6	2.2	114.0	5.4	37.3	26.5	78.3	25.8
2010/11	45.8	1.8	81.0	5.5	13.9	24.4	75.7	22.7
2011/12	49.7	2.3	115.0	8.0	39.7	28.3	80.0	26.0
2012/13	44.0	1.8	77.8	7.2	25.4	21.5	71.7	13.9
2013/14	47.7	2.2	103.9	7.4	37.1	22.9	73.1	15.0
2014/15	46.5	2.4	111.1	6.9	38.3	24.3	75.1	19.6
Coarse Grains								
2008/09	30.2	2.6	79.2	0.7	17.2	41.5	58.1	9.4
2009/10	27.2	2.5	67.6	0.4	15.0	39.0	55.0	7.4
2010/11	21.9	2.2	47.5	1.2	8.8	28.4	41.8	5.5
2011/12	27.0	2.9	78.6	1.0	24.6	38.6	54.4	6.2
2012/13	27.5	2.5	68.2	0.7	19.9	35.6	50.2	5.0
2013/14	29.4	3.0	87.6	0.7	30.6	40.1	56.0	6.8
2014/15	29.7	3.0	89.8	0.8	28.9	44.0	60.1	8.4

Former Soviet Union: Grain Supply and Demand (Wheat)

Millions of Tons/Hectares

Country Mktg Year	Area Harvested	Yield	Production	MY Imports	MY Exports	Feed and Residual	Total Consumpti	Ending Stocks
Former Soviet Union - 12								
Kazakhstan								
2011/12	13.7	1.7	22.7	0.0	11.8	2.6	7.6	6.2
2012/13	12.4	0.8	9.8	0.0	6.3	2.0	6.8	2.9
2013/14	13.0	1.1	13.9	0.0	8.1	2.0	6.8	2.0
2014/15	11.7	1.0	12.0	0.2	5.3	1.9	6.7	2.2
Russia								
2011/12	24.8	2.3	56.2	0.6	21.6	15.5	38.0	10.9
2012/13	21.3	1.8	37.7	1.2	11.3	11.9	33.6	5.0
2013/14	23.4	2.2	52.1	0.8	18.5	12.5	34.1	5.2
2014/15	23.8	2.5	59.0	0.2	22.5	13.0	35.0	6.9
Ukraine								
2011/12	6.7	3.4	22.3	0.1	5.4	6.1	15.0	5.4
2012/13	5.6	2.8	15.8	0.0	7.2	3.1	11.4	2.6
2013/14	6.6	3.4	22.3	0.1	9.8	3.4	11.5	3.7
2014/15	6.3	3.9	24.5	0.1	10.0	4.0	12.0	6.2
Uzbekistan								
2011/12	1.4	4.5	6.3	2.7	0.7	1.6	7.8	1.4
2012/13	1.4	4.8	6.7	1.9	0.4	1.7	8.0	1.6
2013/14	1.4	4.9	6.8	2.2	0.3	1.9	8.4	1.9
2014/15	1.4	5.1	7.2	1.8	0.3	2.0	8.7	1.9
Other Former Soviet Union - 12								
2011/12	3.2	2.3	7.4	4.7	0.2	2.5	11.6	2.2
2012/13	3.2	2.4	7.8	4.1	0.3	2.8	12.0	1.9
2013/14	3.4	2.6	8.8	4.3	0.4	3.1	12.3	2.2
2014/15	3.3	2.5	8.5	4.6	0.2	3.4	12.7	2.4
Total Former Soviet Union - 12								
2011/12	49.7	2.3	115.0	8.0	39.7	28.3	80.0	26.0
2012/13	44.0	1.8	77.8	7.2	25.4	21.5	71.7	13.9
2013/14	47.7	2.2	103.9	7.4	37.1	22.9	73.1	15.0
2014/15	46.5	2.4	111.1	6.9	38.3	24.3	75.1	19.6

Former Soviet Union: Grain Supply and Demand (Barley)

Millions of Tons/Hectares

Country Mktg Year	Area Harvested	Yield	Production	MY Imports	MY Exports	Feed and Residual	Total Consumpti	Ending Stocks
Former Soviet Union - 12								
Kazakhstan								
2011/12	1.5	1.7	2.6	0.0	0.7	1.5	1.8	0.2
2012/13	1.6	0.9	1.5	0.0	0.2	1.2	1.4	0.2
2013/14	1.8	1.4	2.5	0.0	0.5	1.7	2.0	0.2
2014/15	1.9	1.3	2.5	0.0	0.4	1.8	2.1	0.2
Russia								
2011/12	7.7	2.2	16.9	0.4	3.5	9.8	14.3	0.8
2012/13	7.6	1.8	14.0	0.3	2.2	7.7	12.1	0.7
2013/14	8.0	1.9	15.4	0.1	2.7	8.2	12.6	1.0
2014/15	8.2	2.4	19.5	0.1	4.3	9.5	14.3	2.0
Ukraine								
2011/12	3.7	2.5	9.1	0.0	2.5	4.7	6.3	1.2
2012/13	3.3	2.1	6.9	0.0	2.1	3.5	5.1	0.9
2013/14	3.2	2.3	7.6	0.0	2.5	3.4	5.1	0.9
2014/15	3.2	2.9	9.4	0.0	4.0	3.3	4.9	1.4
Uzbekistan								
2011/12	0.1	3.2	0.2	0.1	0.0	0.3	0.3	0.0
2012/13	0.1	3.2	0.2	0.0	0.0	0.2	0.3	0.0
2013/14	0.1	3.2	0.2	0.0	0.0	0.2	0.3	0.0
2014/15	0.1	3.2	0.2	0.0	0.0	0.2	0.3	0.0
Other Former Soviet Union - 12								
2011/12	1.3	2.6	3.4	0.2	0.0	2.7	3.5	0.5
2012/13	1.2	2.8	3.3	0.1	0.0	2.7	3.5	0.4
2013/14	1.4	2.5	3.4	0.1	0.0	2.7	3.5	0.4
2014/15	1.4	2.6	3.5	0.2	0.0	2.8	3.6	0.4
Total Former Soviet Union - 12								
2011/12	14.3	2.3	32.2	0.7	6.7	19.0	26.3	2.7
2012/13	13.8	1.9	26.0	0.4	4.6	15.2	22.3	2.2
2013/14	14.5	2.0	29.2	0.3	5.7	16.2	23.5	2.5
2014/15	14.7	2.4	35.1	0.3	8.7	17.6	25.2	4.0

Former Soviet Union: Grain Supply and Demand (Corn)

Millions of Tons/Hectares

Country Mktg Year	Area Harvested	Yield	Production	MY Imports	MY Exports	Feed and Residual	Total Consumpti	Ending Stocks
Former Soviet Union - 12								
Kazakhstan								
2011/12	0.1	5.0	0.5	0.0	0.0	0.4	0.5	0.0
2012/13	0.1	5.0	0.5	0.0	0.0	0.4	0.5	0.0
2013/14	0.1	5.3	0.6	0.0	0.0	0.5	0.6	0.0
2014/15	0.1	5.0	0.5	0.0	0.0	0.4	0.5	0.0
Russia								
2011/12	1.6	4.3	7.0	0.0	2.0	4.0	4.7	0.4
2012/13	1.9	4.2	8.2	0.1	1.9	5.6	6.4	0.3
2013/14	2.3	5.0	11.6	0.1	4.1	6.6	7.5	0.4
2014/15	2.6	4.6	12.0	0.1	3.0	8.0	9.0	0.4
Ukraine								
2011/12	3.5	6.4	22.8	0.0	15.2	6.5	7.8	1.1
2012/13	4.4	4.8	20.9	0.0	12.7	6.8	8.1	1.2
2013/14	4.8	6.4	30.9	0.1	20.0	8.5	9.9	2.2
2014/15	4.6	5.9	27.0	0.1	16.5	9.0	10.4	2.4
Uzbekistan								
2011/12	0.0	4.6	0.2	0.0	0.0	0.2	0.2	0.0
2012/13	0.0	3.4	0.1	0.0	0.0	0.1	0.1	0.0
2013/14	0.0	3.4	0.1	0.0	0.0	0.1	0.1	0.0
2014/15	0.0	3.4	0.1	0.0	0.0	0.1	0.1	0.0
Other Former Soviet Union - 12								
2011/12	0.9	4.0	3.7	0.2	0.3	2.9	3.3	1.0
2012/13	1.0	2.7	2.6	0.2	0.4	2.6	3.0	0.5
2013/14	1.0	3.8	3.7	0.3	0.4	3.0	3.4	0.7
2014/15	0.9	3.5	3.0	0.3	0.3	2.8	3.1	0.5
Total Former Soviet Union - 12								
2011/12	6.2	5.5	34.1	0.3	17.5	14.0	16.4	2.4
2012/13	7.4	4.4	32.3	0.3	15.0	15.5	18.1	2.0
2013/14	8.3	5.7	46.9	0.4	24.6	18.7	21.4	3.3
2014/15	8.2	5.2	42.7	0.4	19.8	20.3	23.2	3.4

Wheat Supply and Disappearance: Selected Exporters
Million Metric Tons/Hectares

Country Mktg Year	Area Harvested	Yield	Production	MY Imports	MY Exports	Feed and Residual	Total Consumpti	Ending Stocks
Wheat Competitors								
Argentina								
2006/07	6.2	2.6	16.3	0.0	10.7	0.1	5.4	0.6
2007/08	6.6	2.8	18.6	0.0	11.2	0.1	5.7	2.4
2008/09	5.3	2.1	11.0	0.0	6.8	0.0	5.3	1.3
2009/10	4.0	3.0	12.0	0.0	5.1	0.0	5.8	2.3
2010/11	4.8	3.6	17.2	0.0	9.5	0.1	6.0	4.1
2011/12	5.2	3.0	15.5	0.0	12.9	0.1	6.0	0.7
2012/13	3.6	2.6	9.3	0.0	3.6	0.3	6.2	0.3
2013/14	3.5	3.0	10.5	0.0	2.2	0.1	6.1	2.5
2014/15	4.1	2.9	12.0	0.0	6.0	0.1	6.2	2.4
Australia								
2006/07	11.8	0.9	10.8	0.1	8.7	4.5	7.4	4.2
2007/08	12.6	1.1	13.6	0.1	7.5	3.5	6.6	3.7
2008/09	13.5	1.6	21.4	0.1	14.7	4.2	7.4	3.1
2009/10	13.9	1.6	21.8	0.1	14.8	1.9	5.2	5.1
2010/11	13.5	2.0	27.4	0.1	18.6	2.5	5.8	8.2
2011/12	13.9	2.2	29.9	0.1	24.7	3.2	6.5	7.1
2012/13	13.0	1.8	22.9	0.1	18.7	3.4	6.7	4.7
2013/14	13.5	2.0	27.0	0.2	18.6	3.6	7.0	6.2
2014/15	13.8	1.7	24.0	0.2	17.5	3.4	6.8	6.1
Canada								
2006/07	9.7	2.6	25.3	0.3	19.4	4.5	9.0	6.9
2007/08	8.6	2.3	20.1	0.4	16.1	2.2	6.9	4.4
2008/09	10.0	2.9	28.6	0.4	18.9	3.1	7.8	6.6
2009/10	9.7	2.8	27.0	0.4	19.0	2.5	7.2	7.7
2010/11	8.3	2.8	23.3	0.4	16.6	2.7	7.6	7.4
2011/12	8.6	3.0	25.3	0.5	17.4	4.7	9.9	5.9
2012/13	9.5	2.9	27.2	0.5	19.0	4.4	9.6	5.1
2013/14	10.4	3.6	37.5	0.4	23.2	4.8	10.0	9.8
2014/15	9.3	3.0	27.5	0.5	22.0	4.5	9.8	5.9
Total Wheat Competitors								
2006/07	27.7	1.9	52.4	0.4	38.9	9.1	21.7	11.6
2007/08	27.8	1.9	52.3	0.5	34.8	5.8	19.1	10.5
2008/09	28.8	2.1	61.0	0.5	40.4	7.3	20.6	11.0
2009/10	27.5	2.2	60.8	0.5	39.0	4.4	18.2	15.1

Wheat Supply and Disappearance: Selected Exporters (Continued)

Million Metric Tons/Hectares

Country Mktg Year	Area Harvested	Yield	Production	MY Imports	MY Exports	Feed and Residual	Total Consumpti	Ending Stocks
2010/11	26.6	2.5	67.9	0.6	44.7	5.3	19.3	19.7
2011/12	27.6	2.6	70.7	0.6	54.9	8.0	22.3	13.7
2012/13	26.1	2.3	59.4	0.6	41.2	8.1	22.5	10.0
2013/14	27.5	2.7	75.0	0.6	44.1	8.5	23.0	18.6
2014/15	27.2	2.3	63.5	0.6	45.5	8.0	22.8	14.4
India								
2006/07	26.4	2.6	69.4	6.7	0.1	2.3	73.5	4.5
2007/08	28.0	2.7	75.8	2.0	0.0	2.5	76.4	5.8
2008/09	28.2	2.8	78.6	0.0	0.0	2.5	70.9	13.4
2009/10	27.8	2.9	80.7	0.2	0.1	2.8	78.2	16.1
2010/11	28.5	2.8	80.8	0.3	0.1	2.9	81.8	15.4
2011/12	29.1	3.0	86.9	0.0	0.9	3.1	81.4	20.0
2012/13	29.9	3.2	94.9	0.0	6.8	3.4	83.8	24.2
2013/14	30.0	3.1	93.5	0.0	5.9	4.8	94.0	17.8
2014/15	30.6	3.1	95.9	0.0	3.0	4.5	94.5	16.3
Turkey								
2006/07	8.6	2.0	17.5	1.7	2.4	0.8	16.7	1.3
2007/08	7.7	2.0	15.5	2.2	1.7	0.8	16.8	0.4
2008/09	7.7	2.2	16.8	3.5	2.2	0.7	16.9	1.5
2009/10	7.8	2.4	18.5	3.2	4.3	0.8	17.1	1.8
2010/11	8.0	2.1	17.0	3.7	3.0	0.8	17.3	2.2
2011/12	7.7	2.4	18.8	3.8	3.7	1.4	18.1	3.1
2012/13	7.8	2.0	15.5	3.6	3.4	0.7	17.5	1.2
2013/14	7.7	2.3	18.0	4.0	4.4	0.9	17.8	1.1
2014/15	7.7	1.9	15.0	5.8	3.5	0.3	17.4	1.0

Corn Supply and Disappearance: Selected Exporters
Million Metric Tons/Hectares

Country Mktg Year	Area Harvested	Yield	Production	MY Imports	MY Exports	Feed and Residual	Total Consumpti	Ending Stocks
Argentina								
2006/07	2.8	8.0	22.5	0.0	15.4	4.8	6.7	1.7
2007/08	3.4	6.5	22.0	0.0	14.8	4.9	6.8	2.1
2008/09	2.5	6.2	15.5	0.0	10.3	4.5	6.4	0.9
2009/10	3.0	8.3	25.0	0.0	16.5	5.0	6.9	2.5
2010/11	3.8	6.7	25.2	0.0	16.3	5.3	7.3	4.0
2011/12	3.6	5.8	21.0	0.0	17.1	4.8	7.0	0.9
2012/13	4.0	6.8	27.0	0.0	18.7	5.3	7.9	1.3
2013/14	3.4	7.4	25.0	0.0	15.5	5.8	8.7	2.1
2014/15	3.3	7.1	23.0	0.0	13.0	6.1	9.2	2.9
Brazil								
2006/07	14.0	3.6	51.0	1.4	10.8	34.5	41.0	3.6
2007/08	14.7	4.0	58.6	0.7	7.8	36.0	42.5	12.6
2008/09	14.1	3.6	51.0	1.1	7.1	38.5	45.5	12.1
2009/10	12.9	4.3	56.1	0.4	11.6	40.0	47.0	10.0
2010/11	13.8	4.2	57.4	0.8	8.4	42.5	49.5	10.3
2011/12	15.2	4.8	73.0	0.8	24.3	43.0	50.5	9.2
2012/13	15.8	5.2	81.5	0.9	24.9	44.5	52.5	14.2
2013/14	15.7	5.1	79.3	0.8	21.5	46.0	55.0	17.8
2014/15	15.0	5.0	75.0	0.8	19.5	47.5	56.5	17.6
China								
2006/07	28.5	5.3	151.6	0.0	5.3	104.0	145.0	36.6
2007/08	29.5	5.2	152.3	0.0	0.5	106.0	150.0	38.4
2008/09	29.9	5.6	165.9	0.0	0.2	108.0	153.0	51.2
2009/10	31.2	5.3	164.0	1.3	0.2	118.0	165.0	51.3
2010/11	32.5	5.5	177.2	1.0	0.1	128.0	180.0	49.4
2011/12	33.5	5.7	192.8	5.2	0.1	131.0	188.0	59.3
2012/13	35.0	5.9	205.6	2.7	0.1	144.0	200.0	67.6
2013/14	36.3	6.0	218.5	3.3	0.0	154.0	212.0	77.3
2014/15	36.8	5.8	214.0	2.5	0.1	158.0	216.0	77.7
South Africa								
2006/07	2.9	2.5	7.3	1.1	0.5	4.4	8.6	1.7
2007/08	3.3	4.0	13.2	0.0	2.2	4.3	9.6	3.1
2008/09	2.9	4.3	12.6	0.0	1.7	4.3	9.9	4.1
2009/10	3.3	4.1	13.4	0.0	2.1	4.6	10.3	5.2
2010/11	2.9	3.8	10.9	0.4	2.4	5.0	10.7	3.4
2011/12	3.1	4.1	12.8	0.0	1.8	5.0	10.7	3.7

Corn Supply and Disappearance: Selected Exporters (Continued)

Million Metric Tons/Hectares

Country Mktg Year	Area Harvested	Yield	Production	MY Imports	MY Exports	Feed and Residual	Total Consumpti	Ending Stocks
2012/13	3.2	3.8	12.4	0.1	2.1	5.1	11.0	3.1
2013/14	3.1	4.8	14.8	0.0	3.0	5.4	11.5	3.3
2014/15	3.2	4.2	13.5	0.0	2.2	5.6	11.8	2.9
Total Corn Competitors								
2006/07	48.2	4.8	232.4	2.6	31.9	147.7	201.3	43.5
2007/08	50.9	4.8	246.1	0.8	25.3	151.2	208.9	56.2
2008/09	49.4	5.0	245.0	1.2	19.3	155.3	214.8	68.3
2009/10	50.4	5.1	258.5	1.7	30.3	167.6	229.2	68.9
2010/11	52.9	5.1	270.8	2.2	27.3	180.8	247.5	67.2
2011/12	55.5	5.4	299.5	6.0	43.4	183.8	256.2	73.1
2012/13	58.1	5.6	326.5	3.7	45.8	198.9	271.4	86.1
2013/14	58.5	5.8	337.5	4.1	40.0	211.2	287.2	100.5
2014/15	58.3	5.6	325.5	3.3	34.8	217.2	293.5	101.1

Barley Supply and Disappearance: Selected Exporters
Million Metric Tons/Hectares

Country Mktg Year	Area Harvested	Yield	Production	MY Imports	MY Exports	Feed and Residual	Total Consumpti	Ending Stocks
Australia								
2006/07	4.2	1.0	4.3	0.0	1.9	2.9	4.0	1.0
2007/08	4.9	1.5	7.2	0.0	3.4	2.1	3.1	1.7
2008/09	5.0	1.6	8.0	0.0	3.2	2.9	4.0	2.4
2009/10	4.4	1.8	7.9	0.0	3.9	3.3	4.5	1.9
2010/11	3.7	2.2	8.0	0.0	4.7	3.0	4.2	1.0
2011/12	3.7	2.2	8.2	0.0	5.4	2.1	3.3	0.5
2012/13	3.6	2.1	7.5	0.0	4.5	1.8	3.0	0.5
2013/14	3.9	2.4	9.5	0.0	6.5	2.0	3.3	0.3
2014/15	3.8	2.0	7.6	0.0	4.3	1.9	3.2	0.4
Canada								
2006/07	3.2	3.0	9.6	0.0	1.2	8.8	10.2	1.5
2007/08	4.0	2.8	10.9	0.1	3.0	6.4	7.8	1.6
2008/09	3.5	3.4	11.8	0.0	1.5	7.6	8.9	3.0
2009/10	2.9	3.3	9.5	0.0	1.3	7.5	8.7	2.5
2010/11	2.4	3.2	7.6	0.0	1.2	6.3	7.5	1.5
2011/12	2.4	3.3	7.9	0.0	1.3	5.7	6.9	1.2
2012/13	2.8	2.9	8.0	0.0	1.4	5.7	6.8	1.0
2013/14	2.7	3.9	10.3	0.0	1.6	6.6	7.8	1.9
2014/15	2.1	3.4	7.2	0.0	1.2	5.6	6.8	1.1
European Union								
2006/07	13.9	4.1	56.4	0.2	3.4	38.9	55.9	5.8
2007/08	13.9	4.2	57.8	0.3	3.8	38.9	54.5	5.7
2008/09	14.6	4.5	65.8	0.3	3.6	41.7	57.3	11.0
2009/10	14.0	4.5	62.4	0.1	1.1	41.7	56.8	15.6
2010/11	12.5	4.3	53.7	0.2	4.9	41.3	56.6	7.9
2011/12	11.9	4.3	51.9	0.5	3.0	35.8	51.2	6.1
2012/13	12.5	4.4	54.9	0.1	4.9	35.5	51.0	5.1
2013/14	12.4	4.8	59.6	0.0	5.7	38.0	53.4	5.6
2014/15	12.4	4.8	59.8	0.1	6.5	35.5	51.2	7.8

Sorghum Supply and Disappearance: Selected Exporters
Million Metric Tons/Hectares

Country Mktg Year	Area Harvested	Yield	Production	MY Imports	MY Exports	Feed and Residual	Total Consumpti	Ending Stocks
Argentina								
2006/07	0.6	4.7	2.8	0.0	1.1	1.5	1.7	0.2
2007/08	0.6	4.7	2.9	0.0	1.2	1.0	1.2	0.7
2008/09	0.5	3.7	1.7	0.0	1.1	1.0	1.1	0.2
2009/10	0.8	4.8	3.6	0.0	1.8	1.7	1.9	0.2
2010/11	1.0	4.4	4.4	0.0	1.7	1.7	1.9	1.0
2011/12	1.0	4.2	4.2	0.0	3.1	1.7	1.9	0.2
2012/13	1.1	4.5	4.7	0.0	1.8	2.0	2.3	0.8
2013/14	1.0	4.2	4.2	0.0	1.2	2.3	2.7	1.1
2014/15	0.9	4.4	3.7	0.0	1.2	2.5	2.8	0.8
Australia								
2006/07	0.6	2.1	1.3	0.0	0.1	1.2	1.2	0.0
2007/08	0.9	4.0	3.8	0.0	0.8	2.2	2.2	0.8
2008/09	0.8	3.5	2.7	0.0	1.0	1.8	1.8	0.7
2009/10	0.5	3.0	1.5	0.0	0.3	1.2	1.2	0.7
2010/11	0.6	3.1	1.9	0.0	0.9	1.4	1.4	0.4
2011/12	0.7	3.4	2.2	0.0	1.3	1.1	1.1	0.2
2012/13	0.6	3.4	2.2	0.0	1.2	1.1	1.1	0.2
2013/14	0.5	2.2	1.1	0.0	0.4	0.8	0.8	0.1
2014/15	0.7	3.0	2.0	0.0	0.8	1.2	1.2	0.1

U.S. Grains Supply and Distribution: Wheat, Corn, Sorghum, Barley, Oats, Rye, and Rice (Working Statistics)

Thousand Metric Tons/Hectares

	Area Harvested	Yield	Rough Production	Production	Imports	TY Imports	Exports	TY Exports	Feed Dom. Consumption	Domestic Consumption	Ending Stocks
Wheat											
2012/13	19,732	3	nr	61,298	3,341	3,442	27,544	27,734	10,066	37,768	19,538
2013/14	18,345	3	nr	58,105	4,588	4,767	32,012	31,497	6,192	34,174	16,045
2014/15	18,770	3	nr	55,129	4,627	4,400	25,174	25,500	4,899	33,094	17,533
Corn											
2012/13	35,356	8	nr	273,192	4,063	4,265	18,545	18,262	109,603	262,973	20,859
2013/14	35,478	10	nr	353,715	909	727	48,703	50,707	130,358	295,392	31,388
2014/15	33,628	11	nr	365,965	635	650	44,452	44,500	136,531	302,528	51,008
Sorghum											
2012/13	2,021	3	nr	6,293	243	243	1,938	2,136	2,377	4,796	385
2013/14	2,643	4	nr	9,882	2	3	5,380	5,843	2,247	4,025	864
2014/15	2,499	4	nr	10,362	1	1	5,842	5,600	2,413	4,444	941
Barley											
2012/13	1,325	4	nr	4,768	507	431	193	163	1,263	4,638	1,750
2013/14	1,230	4	nr	4,719	408	522	311	336	1,406	4,780	1,786
2014/15	989	4	nr	3,849	762	600	218	250	1,306	4,659	1,520
Oats											
2012/13	407	2	nr	892	1,601	1,341	20	18	1,640	2,743	527
2013/14	408	2	nr	938	1,676	1,861	23	28	1,671	2,759	359
2014/15	416	2	nr	1,011	1,724	1,700	29	30	1,506	2,623	442
Rye											
2012/13	101	2	nr	166	228	221	8	7	148	387	10
2013/14	113	2	nr	194	234	204	7	6	184	424	7
2014/15	104	2	nr	183	229	200	6	5	160	402	11
Rice, Milled											
2012/13	1,084	8	9,069	6,348	669	675	3,385	3,293	nr	3,779	1,156
2013/14	999	9	8,613	6,115	733	730	2,985	3,100	nr	3,994	1,025
2014/15	1,178	9	10,027	7,069	667	670	3,262	3,400	nr	4,191	1,308

Notes: Wheat Trade Year (TY) statistics are on July/June years. Barley, corn, sorghum, rye and oats Trade Year (TY) statistics are on Oct/Sept years. Rice Trade Year (TY) statistics are for the subsequent calendar year; 'Imports' and 'Exports' columns contain data on the local marketing year: wheat, barley, oats and rye are June/May; corn and sorghum are Sept/Aug; rice is Aug/July.

Total Wheat and Coarse Grains: Supply and Demand

Millions of Metric Tons/Hectares

	Area Harvested	Yield	Production	TY Exports	Feed Dom. Consumpti	Domestic Consumpti	Ending Stocks
Wheat and Coarse Grains							
1985/86	570.5	2.3	1,328.5	165.2	614.5	1,247.9	420.6
1986/87	565.2	2.4	1,347.9	174.7	645.6	1,299.4	469.2
1987/88	544.3	2.4	1,285.9	202.2	656.5	1,329.8	423.1
1988/89	541.9	2.2	1,218.1	203.3	619.4	1,302.0	339.3
1989/90	548.2	2.4	1,327.4	208.9	644.4	1,346.2	320.5
1990/91	545.7	2.6	1,417.7	190.1	668.7	1,369.5	368.7
1991/92	543.3	2.5	1,355.7	207.5	651.4	1,364.9	359.5
1992/93	545.7	2.6	1,431.6	205.2	663.0	1,389.1	399.2
1993/94	535.9	2.5	1,356.1	188.2	655.7	1,389.3	366.1
1994/95	534.0	2.6	1,392.5	200.1	668.9	1,395.8	362.7
1995/96	527.1	2.5	1,338.5	187.5	640.1	1,381.9	319.4
1996/97	546.0	2.7	1,490.3	198.3	672.9	1,442.6	367.1
1997/98	535.2	2.8	1,491.6	190.3	683.9	1,444.2	414.4
1998/99	520.3	2.8	1,481.8	198.7	683.3	1,448.3	447.9
1999/00	506.2	2.9	1,465.3	214.0	689.0	1,468.2	444.5
2000/01	509.4	2.8	1,447.3	205.0	699.1	1,472.4	419.4
2001/02	511.8	2.9	1,481.0	208.4	712.2	1,496.4	404.1
2002/03	502.6	2.9	1,444.4	209.3	710.1	1,506.3	342.2
2003/04	510.6	2.9	1,471.8	206.0	716.0	1,535.4	278.6
2004/05	514.1	3.2	1,642.6	214.5	754.5	1,585.5	335.7
2005/06	516.4	3.1	1,599.9	222.6	755.1	1,615.7	319.9
2006/07	516.7	3.1	1,585.0	230.0	747.0	1,629.6	275.3
2007/08	533.8	3.2	1,692.5	244.9	760.1	1,674.0	293.8
2008/09	538.9	3.3	1,792.2	253.6	772.0	1,723.1	363.0
2009/10	533.2	3.4	1,804.2	254.2	779.2	1,767.5	399.7
2010/11	522.7	3.3	1,748.5	250.2	771.2	1,782.9	365.3
2011/12	538.2	3.4	1,851.5	287.2	804.6	1,852.0	364.7
2012/13	532.1	3.4	1,794.2	279.2	806.6	1,815.3	343.6
2013/14	543.5	3.7	1,995.0	325.8	869.6	1,942.9	395.7
2014/15	538.5	3.7	1,993.6	303.4	897.0	1,967.8	421.5

Notes: Wheat and coarse grains trade data are on July/June years through 1975/76. From 1976/77 to the present, coarse grains data are on an Oct/Sept trade year.

World Wheat and Coarse Grains: Supply and Demand

Millions of Metric Tons/Hectares

	Area Harvested	Yield	Production	TY Exports	Feed Dom. Consumpti	Domestic Consumpti	Ending Stocks
Wheat							
1992/93	222.1	2.5	562.6	113.2	111.6	547.7	177.9
1993/94	221.0	2.5	558.5	101.7	109.6	553.0	183.4
1994/95	213.3	2.5	523.0	101.5	101.4	542.1	164.2
1995/96	216.7	2.5	537.5	99.2	95.2	546.1	155.7
1996/97	227.1	2.6	581.4	104.0	99.6	573.4	163.6
1997/98	226.4	2.7	610.2	104.5	103.8	576.6	197.3
1998/99	219.2	2.7	590.4	102.0	106.9	578.3	209.5
1999/00	212.5	2.8	586.8	111.9	102.9	585.4	210.9
2000/01	215.6	2.7	583.3	102.2	109.2	586.9	207.3
2001/02	214.5	2.7	583.8	108.0	110.0	586.6	204.4
2002/03	213.4	2.7	569.6	106.6	113.9	604.2	169.8
2003/04	207.6	2.7	555.3	103.6	99.8	589.5	135.6
2004/05	215.8	2.9	626.7	113.3	108.5	606.0	156.3
2005/06	217.6	2.8	618.9	114.2	115.0	621.1	154.0
2006/07	211.6	2.8	596.5	115.4	110.8	616.5	134.1
2007/08	217.1	2.8	612.7	116.2	102.5	617.7	129.0
2008/09	224.2	3.1	683.9	143.2	122.5	644.3	168.6
2009/10	225.4	3.0	686.8	135.4	121.0	654.2	201.2
2010/11	216.7	3.0	649.6	134.1	114.9	653.4	197.4
2011/12	220.7	3.2	695.8	153.8	146.6	697.0	196.2
2012/13	216.3	3.0	657.9	147.1	137.1	679.3	174.8
2013/14	220.8	3.2	714.7	162.1	130.2	703.8	185.7
2014/15	221.4	3.3	719.9	155.2	139.9	712.7	192.9
Coarse Grains							
1992/93	323.6	2.7	868.9	91.9	551.4	841.4	221.3
1993/94	314.9	2.5	797.7	86.5	546.1	836.3	182.7
1994/95	320.7	2.7	869.5	98.6	567.6	853.7	198.5
1995/96	310.3	2.6	801.0	88.3	544.9	835.8	163.7
1996/97	318.8	2.9	908.9	94.3	573.3	869.2	203.4
1997/98	308.8	2.9	881.3	85.8	580.0	867.7	217.1
1998/99	301.1	3.0	891.3	96.7	576.4	870.0	238.5
1999/00	293.7	3.0	878.5	102.1	586.0	882.8	233.6
2000/01	293.8	2.9	864.0	102.8	589.9	885.5	212.2
2001/02	297.4	3.0	897.2	100.4	602.2	909.7	199.6
2002/03	289.1	3.0	874.8	102.7	596.1	902.0	172.4
2003/04	303.0	3.0	916.6	102.3	616.2	945.9	143.0
2004/05	298.3	3.4	1,015.9	101.2	646.0	979.5	179.4
2005/06	298.7	3.3	981.0	108.4	640.1	994.5	165.9
2006/07	305.1	3.2	988.5	114.5	636.1	1,013.2	141.2
2007/08	316.7	3.4	1,079.8	128.7	657.5	1,056.2	164.9
2008/09	314.7	3.5	1,108.3	110.4	649.5	1,078.8	194.4
2009/10	307.8	3.6	1,117.4	118.8	658.2	1,113.3	198.5
2010/11	306.0	3.6	1,098.9	116.0	656.3	1,129.5	167.9
2011/12	317.5	3.6	1,155.7	133.4	658.0	1,155.0	168.5
2012/13	315.8	3.6	1,136.3	132.2	669.5	1,136.0	168.8
2013/14	322.7	4.0	1,280.3	163.7	739.4	1,239.1	210.0
2014/15	317.1	4.0	1,273.8	148.2	757.1	1,255.1	228.6

Notes: Wheat and coarse grains trade data are on July/June years through 1975/76. From 1976/77 to the present, coarse grains data are on an Oct/Sept trade year.

World Corn and Barley: Supply and Demand

Millions of Metric Tons/Hectares

	Area Harvested	Yield	Production	TY Exports	Feed Dom. Consumpti	Domestic Consumpti	Ending Stocks
Corn							
1992/93	133.1	4.0	535.6	62.6	348.7	512.1	162.7
1993/94	130.7	3.6	475.8	57.4	342.0	509.0	129.4
1994/95	135.2	4.1	559.3	71.9	371.6	535.4	153.3
1995/96	135.0	3.8	516.4	64.8	365.3	536.4	133.3
1996/97	141.5	4.2	592.8	66.6	387.9	559.8	166.3
1997/98	136.3	4.2	574.4	63.1	401.1	573.5	167.2
1998/99	138.9	4.4	605.8	68.7	404.8	581.6	191.4
1999/00	139.0	4.4	608.4	72.0	423.1	605.4	194.4
2000/01	137.1	4.3	591.8	75.9	427.9	610.9	175.3
2001/02	137.3	4.4	601.8	72.7	436.9	625.6	151.5
2002/03	137.4	4.4	603.9	76.8	434.0	628.5	126.9
2003/04	141.7	4.4	627.4	79.0	446.4	649.6	104.7
2004/05	145.4	4.9	716.8	76.0	476.5	690.2	131.3
2005/06	145.4	4.8	700.7	82.5	479.1	707.5	124.5
2006/07	150.3	4.8	716.6	91.3	479.9	730.4	110.7
2007/08	160.4	5.0	795.5	98.2	499.2	774.5	131.7
2008/09	158.7	5.0	799.7	83.6	481.6	784.0	147.5
2009/10	158.7	5.2	824.9	92.7	491.0	825.8	146.6
2010/11	164.6	5.1	835.4	91.7	502.9	852.0	130.0
2011/12	172.1	5.2	888.2	103.7	507.5	883.7	134.5
2012/13	177.6	4.9	868.0	100.5	518.8	864.7	137.8
2013/14	180.0	5.5	989.2	129.6	576.1	954.0	173.0
2014/15	177.2	5.6	990.3	115.0	596.7	971.8	191.5
Barley							
1992/93	72.6	2.3	166.3	16.4	119.0	165.6	35.0
1993/94	73.2	2.3	169.0	18.8	123.8	169.1	34.9
1994/95	72.2	2.2	160.7	15.3	120.9	165.6	30.0
1995/96	66.4	2.1	141.2	13.4	107.8	150.7	20.5
1996/97	64.3	2.4	153.2	17.9	106.3	149.5	24.1
1997/98	63.8	2.4	153.9	12.8	104.1	145.8	32.2
1998/99	56.6	2.4	136.0	17.8	99.5	139.3	29.0
1999/00	52.1	2.4	127.4	17.8	94.0	132.5	23.9
2000/01	52.9	2.5	133.0	16.3	94.6	134.3	22.6
2001/02	55.7	2.6	143.4	17.2	95.5	136.8	29.2
2002/03	54.8	2.4	134.2	16.3	94.7	135.8	27.5
2003/04	58.3	2.4	142.2	14.8	102.6	146.3	23.4
2004/05	57.5	2.6	152.1	17.0	100.0	142.5	33.1
2005/06	55.3	2.5	136.2	17.4	97.4	141.0	28.3
2006/07	56.4	2.4	136.9	14.6	98.4	143.7	21.5
2007/08	55.9	2.4	133.0	18.5	91.1	133.9	20.6
2008/09	55.2	2.8	155.0	18.2	100.4	144.0	31.6
2009/10	54.4	2.8	151.1	17.3	101.4	145.2	37.5
2010/11	47.2	2.6	123.1	15.2	91.3	136.2	24.4
2011/12	49.4	2.7	133.5	21.4	91.7	135.2	22.7
2012/13	50.2	2.6	129.8	22.1	88.8	131.7	20.8
2013/14	50.6	2.9	145.3	23.4	97.3	141.2	24.9
2014/15	48.9	2.9	139.8	22.2	93.7	139.8	24.8

Notes: Coarse grains trade data are on July/June years through 1975/76. From 1976/77 to the present, coarse grains data are on an Oct/Sept trade year.

World Rice: Supply and Demand

Millions of Metric Tons/Hectares

	Area Harvested	Yield	Rough Production	Production	TY Exports	Domestic Consumpti	Ending Stocks
Rice, Milled							
1985/86	144.7	3.2	467.3	318.0	11.8	308.0	97.7
1986/87	144.8	3.2	464.6	316.1	12.9	310.4	103.3
1987/88	141.4	3.3	464.8	315.1	11.4	313.1	105.3
1988/89	146.6	3.3	490.8	332.1	14.0	325.7	111.7
1989/90	147.8	3.5	510.3	345.2	11.7	336.3	120.6
1990/91	147.0	3.5	519.4	351.4	12.3	345.3	126.7
1991/92	147.5	3.5	522.8	353.2	14.4	353.2	126.7
1992/93	146.5	3.6	524.2	354.0	14.9	357.5	123.2
1993/94	145.3	3.6	526.1	354.7	16.6	358.9	119.0
1994/95	147.3	3.7	539.9	364.1	20.8	365.5	117.6
1995/96	148.4	3.7	547.3	368.8	19.7	368.3	118.1
1996/97	150.1	3.8	565.3	381.4	18.9	379.2	120.3
1997/98	151.7	3.8	575.2	387.4	27.6	380.0	127.7
1998/99	153.1	3.8	587.0	394.9	24.8	388.6	134.0
1999/00	155.9	3.9	608.6	409.2	22.8	400.1	143.1
2000/01	152.4	3.9	594.1	399.3	24.3	395.6	146.7
2001/02	151.3	3.9	594.3	399.5	27.7	413.3	132.9
2002/03	146.9	3.8	563.1	378.2	27.6	408.1	103.0
2003/04	149.3	3.9	585.1	392.3	27.3	413.7	81.6
2004/05	151.8	3.9	596.6	400.9	29.0	408.6	73.9
2005/06	154.0	4.0	622.3	417.9	29.1	415.5	76.3
2006/07	154.6	4.0	625.6	420.5	31.9	421.6	75.2
2007/08	154.7	4.2	642.5	432.9	29.6	427.3	80.8
2008/09	158.1	4.2	668.3	449.1	29.4	437.6	92.4
2009/10	155.8	4.2	656.6	440.9	31.8	438.7	94.6
2010/11	158.2	4.2	671.4	450.0	36.6	445.0	99.6
2011/12	160.3	4.3	696.2	467.0	39.9	459.8	106.8
2012/13	158.2	4.4	703.6	471.9	39.4	468.6	110.1
2013/14	160.7	4.4	710.3	476.4	41.7	480.0	106.5
2014/15	160.9	4.4	708.3	475.0	41.6	482.9	98.6

Notes: Stocks, exports and consumption are expressed on a milled basis in marketing years.

ENDNOTES TO GRAIN: WORLD MARKETS AND TRADE

REGIONAL TABLES

North America: Canada, Mexico, the United States.

Central America: Belize, Costa Rica, El Salvador, Guatemala, Honduras, Nicaragua, Panama.

Caribbean: Anguilla, Antigua and Barbuda, Aruba, Bahamas, Barbados, Bermuda, British Virgin Islands, Cayman Islands, Cuba, Dominica, Dominican Republic, French West Indies, Grenada, Guadeloupe, Haiti, Jamaica and Dep, Leeward-Windward Islands, Martinique, Montserrat, Netherlands Antilles, Puerto Rico, Kitts and Nevis, St. Lucia, St. Vincent and the Grenadines, Trinidad and Tobago, Turks and Caicos Islands, Virgin Islands of the U.S.

South America: Argentina, Bolivia, Brazil, Chile, Colombia, Ecuador, Falkland Islands (Islas Malvinas), French Guiana, Guyana, Paraguay, Peru, Suriname, Uruguay, Venezuela.

EU: Austria, Belgium/Luxembourg, Bulgaria, Croatia, Cyprus, Czech Republic, Denmark, Estonia, Finland, France, Germany, Greece, Hungary, Ireland, Italy, Latvia, Lithuania, Malta, Netherlands, Poland, Portugal, Romania, Slovakia, Slovenia, Spain, Sweden, United Kingdom.

Other Europe: Albania, Azores, Bosnia and Herzegovina, Former Yugoslavia, Gibraltar, Iceland, Macedonia, Montenegro, Norway, Serbia, Switzerland.

Former Soviet Union: Armenia, Azerbaijan, Belarus, Georgia, Kazakhstan, Kyrgyzstan, Moldova, Russia, Tajikistan, Turkmenistan, Ukraine, Uzbekistan.

Middle East: Bahrain, Iran, Iraq, Israel, Jordan, Kuwait, Lebanon, Oman, Qatar, Saudi Arabia, Syria, Turkey, United Arab Emirates, Yemen.

North Africa: Algeria, Egypt, Libya, Morocco, Tunisia.

Sub-Saharan Africa: all African countries except North Africa.

East Asia: China, Hong Kong, Japan, South Korea, North Korea, Macau, Mongolia, Taiwan.

South Asia: Afghanistan, Bangladesh, Bhutan, India, Nepal, Pakistan, Sri Lanka, Maldives.

Southeast Asia: Brunei, Burma, Cambodia, Indonesia, Laos, Malaysia, Philippines, Singapore, Thailand, Vietnam.

Oceania: Australia, Fiji, New Zealand, Papua New Guinea.

OTHER NOTES

Local Marketing Years (LMY): LMY refers to the 12-month period at the onset of the main harvest, when the crop is marketed (i.e., consumed, traded, or stored). The year first listed begins a country's LMY for that commodity (2014/15 starts in 2014); except for summer grains in certain Southern Hemisphere countries and for rice in selected countries, where the second year begins the LMY (2014/15 starts in 2015). Key exporter LMY's are:

Wheat	Corn	Barley	Sorghum
Argentina (Dec/Nov)	Argentina (Mar/Feb)	Australia (Nov/Oct)	Argentina (Mar/Feb)
Australia (Oct/Sep)	Brazil (Mar/Feb)	Canada (Aug/Jul)	Australia (Mar/Feb)
Canada (Aug/Jul)	China (Oct/Sep)	European Union (Jul/Jun)	United States (Sep/Aug)
China (Jul/Jun)	South Africa (May/Apr)	Russia (Jul/Jun)	
European Union (Jul/Jun)	United States (Sep/Aug)	Ukraine (Jul/Jun)	
India (Apr/Mar)		United States (Jun/May)	
Kazakhstan (Jul/Jun)			
Russia (Jul/Jun)			
Turkey (Jun/May)			
Ukraine (Jul/Jun)			
United States (Jun/May)			

For a complete list of local marketing years, please see the FAS website (<http://www.fas.usda.gov/psdonline/psdAvailability.aspx>).

Stocks: Unless otherwise stated, stock data are based on an aggregate of differing local marketing years and should not be construed as representing world stock levels at a fixed point in time.

Consumption: World totals for consumption reflect total utilization, including food, seed, industrial, feed, and waste; as well as differences in local marketing year imports and local marketing year exports. Consumption statistics for regions and individual countries, however, reflect food, seed, industrial, feed, and waste only.

Trade: All PSD tables are balanced on the different local marketing years. All trade tables contain Trade Year (TY) data which puts all countries on a uniform, 12-month period for analytical comparisons: wheat is July/June; coarse grains, corn, barley, sorghum, oats, and rye are Oct/Sept; and rice is calendar year.

EU Consolidation: The trade figures starting from 1999/00 represent the European Union (Croatia plus the former EU-27) and exclude all intra-trade. For the years 1960/61 through 1998/99, figures are the EU-15 and also exclude all intra-trade. EU-15 member states' data for grains are no longer maintained in the official USDA database. Data for the individual NMS-10, plus Bulgaria, Romania, and Croatia, exists only prior to 1999/00.

Statistics: (1) Wheat trade statistics include wheat, flour, and selected pasta products on a grain equivalent basis. (2) Rice trade statistics include rough, brown, milled, and broken on a milled equivalent basis. (3) Coarse grains statistics include corn, barley, sorghum, oats, rye, millet, and mixed grains but exclude trade in barley malt, millet, and mixed grains.

Unaccounted: This term includes grain in transit, reporting discrepancies in some countries, and trade to countries outside the USDA database.

The Global Commodity Analysis Division, Office of Global Analysis, Foreign Agricultural Service, USDA, Washington, DC 20250, prepared this circular. Information is gathered from official statistics of foreign governments and other foreign source materials, reports of U.S. agricultural attachés and Foreign Service officers, office research, and related information. Further information may be obtained by writing the Division or telephoning (202) 720-3448.

Note: The previous report in this series was Grain: World Markets and Trade October 2014. For further details on world grain production, please see World Agricultural Production November 2014.

This circular is available in its entirety on the Internet via the Foreign Agricultural Service Home Page. The address is: <http://www.fas.usda.gov>

Questions may be directed to the following staff:

Teresa McKeivier	(202) 690-1151	Teresa.McKeivier@fas.usda.gov	Wheat
Andrew Sowell	(202) 720-0262	Andrew.Sowell@fas.usda.gov	Wheat
Yoonhee Macke	(202) 690-4199	Yoonhee.Macke@fas.usda.gov	Rice
Rick O'Meara	(202) 720-4933	Richard.Omeara@fas.usda.gov	Coarse Grains
Lisa Bennett	(202) 720-0929	Lisa.Bennett@fas.usda.gov	Coarse Grains
Gene Kim	(202) 720-8398	Gene.Kim@fas.usda.gov	Coarse Grains