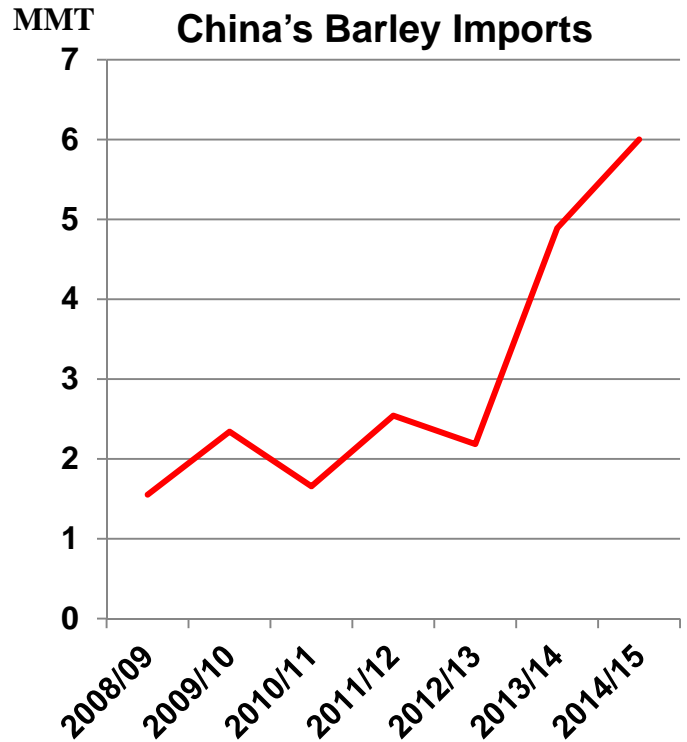
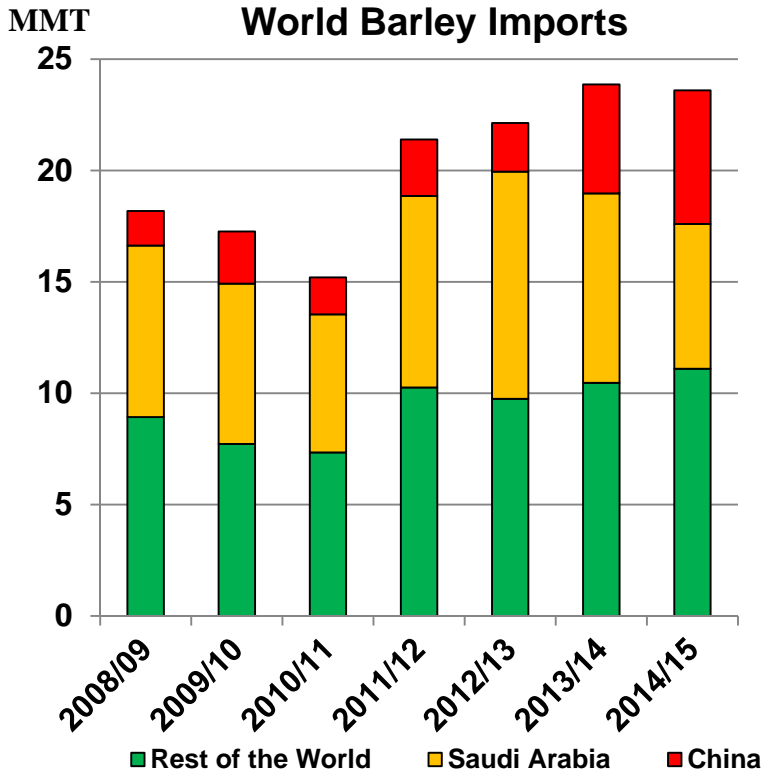




# Grain: World Markets and Trade

## China Drives World Barley Trade



China's barley imports are boosted to a record 6.0 million tons this month, propelling world trade to the second highest level after last year's record. China is traditionally the world's largest malting barley importer; however, starting last year, imports of barley for feed use surged. This comes as China's appetite for imported coarse grains has grown more than 25 percent year to year, to nearly 16 million tons. China also remains an important market for distillers dried grains with solubles (see November 2014 [Grain: World Markets and Trade](#)).

At the same time, Saudi Arabia, the largest barley importer at 6.5 million tons, has made changes to its subsidy policy in order to diversify its feedstuffs imports and to lessen its reliance on barley. As a result, this month barley imports are lowered (500,000 tons) and corn boosted (600,000 tons).

The EU, with its barley exports forecast the highest in 15 years, stands to gain the most this year from China's growing demand. This comes after 2 years of good EU crops and as barley and other feed grain prices have fallen following 2 consecutive years of record world corn production.

For email subscription, click here to register: <https://public.govdelivery.com/accounts/USDAFAS/subscriber/new>

---

## **TABLE OF CONTENTS**

<b>World Markets and Trade: Commentary and Current Data</b>	
Wheat .....	4
Rice .....	10
Coarse Grains.....	15
<b>Historical Data Series for Selected Regions and Countries .....</b>	<b>35</b>
<b>Endnotes to Grain: World Markets and Trade .....</b>	<b>54</b>

The Foreign Agricultural Service (FAS) updates its production, supply and distribution (PSD) database for cotton, oilseeds, and grains at 12:00 p.m. on the day the *World Agricultural Supply and Demand Estimates* (WASDE) report is released. This circular is released by 12:15 p.m.

**To download the tables in the publication**, go to Production, Supply and Distribution Database (PSD Online): (<http://apps.fas.usda.gov/psdonline/psdHome.aspx>), scroll down to Reports, and Click the plus sign [+] next to Grains.

### **FAS Reports and Databases:**

Current *World Markets and Trade* and *World Agricultural Production* Reports:

<http://apps.fas.usda.gov/psdonline/psdDataPublications.aspx>

Archives *World Markets and Trade* and *World Agricultural Production* Reports:

<http://usda.mannlib.cornell.edu/MannUsda/viewTaxonomy.do?taxonomyID=7>

Production, Supply and Distribution Database (PSD Online):

<http://apps.fas.usda.gov/psdonline/psdHome.aspx>

Global Agricultural Trade System (U.S. Exports and Imports):

<http://apps.fas.usda.gov/gats/default.aspx>

Export Sales Report:

<http://apps.fas.usda.gov/esrquery/>

Global Agricultural Information Network (Agricultural Attaché Reports):

<http://gain.fas.usda.gov/Pages/Default.aspx>

### **Other USDA Reports:**

World Agricultural Supply and Demand Estimates (WASDE):

<http://www.usda.gov/oce/commodity/wasde/>

Economic Research Service:

<http://www.ers.usda.gov/topics/crops>

National Agricultural Statistics Service:

<http://www.nass.usda.gov/Publications/>

## All Grain Summary Comparison

Marketing Year	Wheat			Rice, Milled			Corn			
	2012/13	2013/14	2014/15	2012/13	2013/14	2014/15	2012/13	2013/14	2014/15	
<b>Production</b>										
United States	(Jun-May)	61.3	58.1	55.1	6.3	6.1	7.1	273.2	351.3	361.1
Other		597.2	658.0	669.7	465.7	471.0	467.8	594.8	638.3	628.6
<b>World Total</b>		658.5	716.1	724.8	472.0	477.1	474.9	868.0	989.6	989.7
<b>Domestic Consumption</b>										
United States	(Jun-May)	37.8	34.2	32.3	3.8	4.0	4.2	263.0	293.0	302.1
Other		648.8	660.9	679.1	462.0	473.5	476.9	605.7	651.9	670.4
<b>World Total</b>		686.6	695.1	711.4	465.8	477.5	481.1	868.7	944.9	972.5
<b>Ending Stocks</b>										
United States	(Jun-May)	19.5	16.1	18.8	1.2	1.0	1.3	20.9	31.3	45.1
Other		156.1	171.4	178.9	108.9	105.5	96.3	114.8	140.8	140.2
<b>World Total</b>		175.6	187.5	197.7	110.1	106.5	97.6	135.7	172.1	185.3
<b>TY Imports</b>										
United States	(Jun-May)	3.4	4.8	4.2	0.7	0.8	0.7	4.3	0.7	0.7
Other		140.2	153.8	152.5	35.9	40.1	39.7	94.5	122.2	111.8
<b>World Total</b>		143.6	158.6	156.7	36.6	40.9	40.4	98.8	122.9	112.5
<b>TY Exports</b>										
United States	(Jun-May)	27.7	31.5	25.0	3.3	3.0	3.4	18.3	50.7	45.5
Other		119.4	130.6	135.1	36.2	40.2	39.2	82.2	79.0	72.3
<b>World Total</b>		147.1	162.1	160.1	39.5	43.2	42.6	100.5	129.7	117.8

Note: Consumption in this table has not been adjusted for differences in marketing year imports and exports and therefore differs from global totals shown elsewhere.

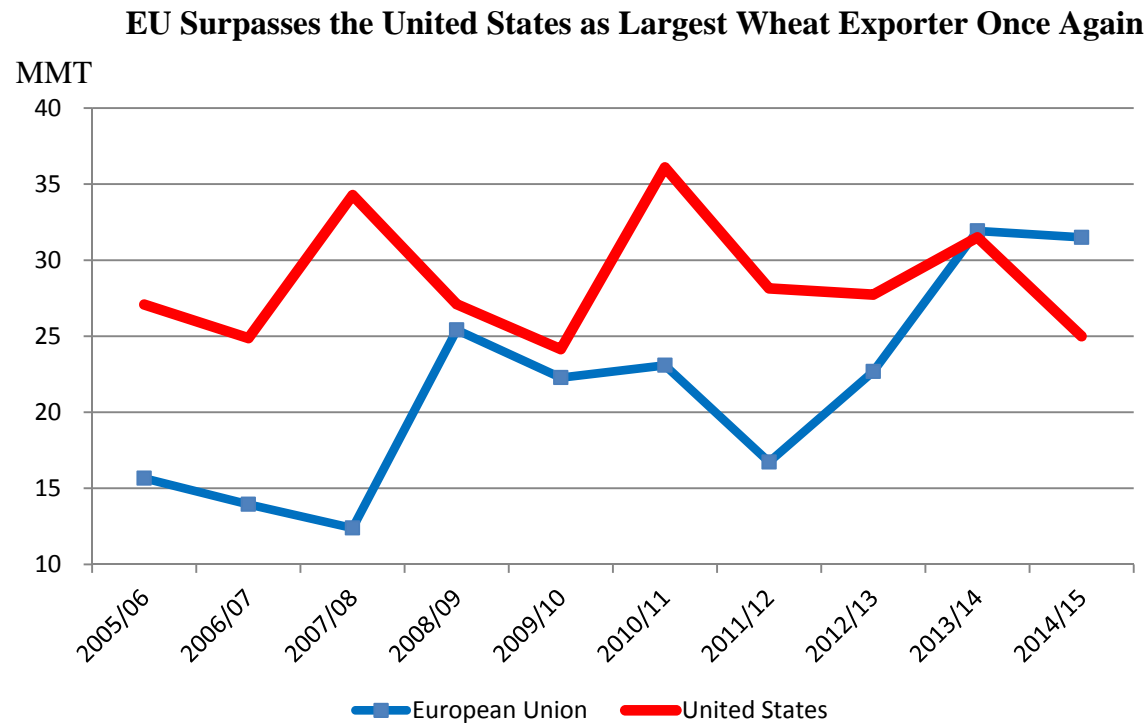
Marketing years for U.S. grains are: Wheat (Jun-May), Rice (Aug-Jul), Corn (Sep-Aug).  
'Marketing Year' column is germane for U.S. wheat only.

---

## WHEAT: WORLD MARKETS AND TRADE

### OVERVIEW

Global production for 2014/15 is down slightly from last month but still projected at a record. Global trade is nearly unchanged with higher EU exports offsetting a drop in Argentina. The U.S. season-average farm price is unchanged.

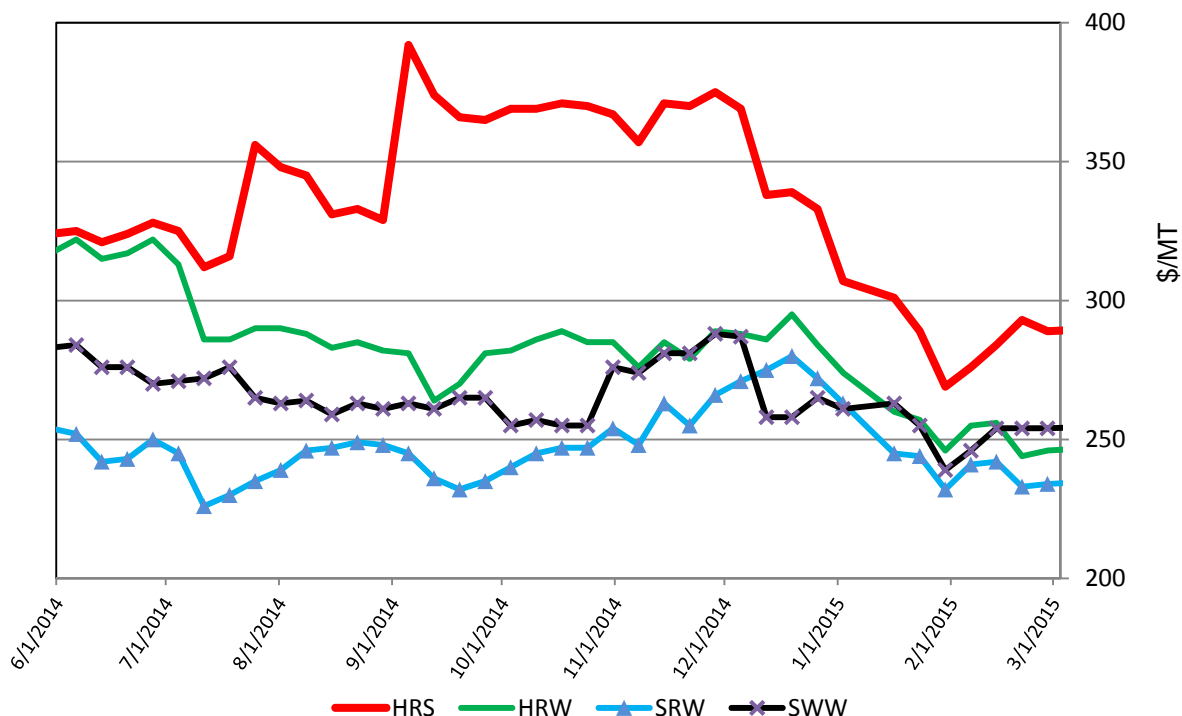


The EU first overtook the United States as the world's top wheat exporter in 2013/14 and the gap is projected to widen in 2014/15. The EU has a record crop and is the world's most competitive supplier. French wheat has been priced below Black Sea for much of the season, due in part to lower-than-average quality. Although Russia and Ukraine shipped at a record pace during the first half of the marketing year, trade is expected to plunge on Russia's export duty and Ukraine's voluntary export limits. Despite Russia's waning presence in the market, the United States is unlikely to fill the gap due to uncompetitive prices and a strengthening dollar.

---

## U.S. PRICES:

### U.S. Weekly FOB Export Bids



**Domestic:** Export prices for most wheat classes rose slightly in February. Hard Red Spring (HRS) prices jumped \$20 to \$289/ton and Soft White Winter (SWW) rose \$15 to \$254/ton, both on strong demand and the fast pace of shipments in recent weeks. Hard Red Winter (HRW) ended the month unchanged at \$246/ton but spiked mid-month due to concerns about frigid weather affecting crops in parts of Kansas, Oklahoma, and Texas. Soft Red Winter (SRW) prices were up \$2 to \$234/ton.

## TRADE CHANGES IN 2014/15

### Selected Exporters

- **Argentina** is cut 500,000 tons to 5.5 million as the government slowly issues export licenses.
- **EU** is boosted 500,000 tons to 31.5 million on recent sales to Algeria, Egypt, and Morocco.

---

## **Selected Importers**

- **Algeria** is lowered 300,000 tons to 7.1 million on expectations of a larger 2015/16 crop.
- **Morocco** is boosted 300,000 tons to 3.4 million on a strong pace to date and a recent large purchase of EU soft wheat.
- **Philippines** is raised 300,000 tons to a record 4.1 million based on growing consumption and strong early-season purchases.
- **Syria** is down 300,000 tons to 1.7 million on slow purchases.
- **Thailand** is up 300,000 tons to 2.3 million on recent purchases of feed-quality wheat used primarily in the shrimp industry.
- **Yemen** is cut 300,000 tons to 3.3 million on the slow pace of purchases.

**World Wheat, Flour, and Products Trade**  
**July/June Year, Thousand Metric Tons**

	2010/11	2011/12	2012/13	2013/14	2014/15 Feb	2014/15 Mar
<b>TY Exports</b>						
Argentina	7,742	11,951	7,450	1,601	6,000	5,500
Australia	18,455	23,031	21,269	18,339	17,500	17,500
Brazil	2,539	1,860	1,753	81	1,500	1,500
Canada	16,768	17,603	18,584	22,157	23,500	23,500
European Union	23,086	16,728	22,677	31,925	31,000	31,500
India	73	1,723	8,651	5,354	2,200	2,200
Kazakhstan	5,519	11,069	6,801	8,000	6,000	6,000
Russia	3,983	21,627	11,289	18,534	20,000	20,000
Turkey	2,944	3,678	3,583	4,294	3,800	3,800
Ukraine	4,302	5,436	7,190	9,755	11,000	11,000
Others	12,633	10,968	10,112	10,597	12,620	12,575
<b>Subtotal</b>	<b>98,044</b>	<b>125,674</b>	<b>119,359</b>	<b>130,637</b>	<b>135,120</b>	<b>135,075</b>
<b>United States</b>	<b>36,098</b>	<b>28,144</b>	<b>27,734</b>	<b>31,497</b>	<b>25,000</b>	<b>25,000</b>
<b>World Total</b>	<b>134,142</b>	<b>153,818</b>	<b>147,093</b>	<b>162,134</b>	<b>160,120</b>	<b>160,075</b>
<b>TY Imports</b>						
Afghanistan	2,000	2,200	1,600	2,050	2,000	2,000
Algeria	6,516	6,500	6,484	7,484	7,400	7,100
Bangladesh	3,951	2,039	2,725	3,354	3,300	3,300
Brazil	6,742	7,053	7,547	7,061	6,700	6,700
Egypt	10,600	11,650	8,300	10,170	10,500	10,500
European Union	4,621	7,362	5,277	3,982	5,500	5,500
Indonesia	6,606	6,457	7,146	7,392	7,700	7,700
Iran	200	2,400	5,600	6,600	6,500	6,500
Iraq	3,631	3,784	3,948	3,246	3,000	3,000
Japan	5,869	6,354	6,598	6,123	6,000	5,900
Korea, South	4,761	5,188	5,439	4,288	3,800	3,800
Mexico	3,404	5,020	3,826	4,636	4,600	4,600
Morocco	4,019	3,671	3,825	3,892	3,100	3,400
Nigeria	4,052	3,931	4,140	4,550	4,750	4,750
Philippines	3,224	4,075	3,645	3,482	3,800	4,100
Saudi Arabia	1,739	2,904	1,921	3,429	3,450	3,550
South Africa	1,627	1,542	1,558	1,775	1,750	1,750
Sudan	1,595	2,360	1,793	2,664	2,600	2,600
Thailand	1,943	2,646	1,845	1,693	2,000	2,300
Turkey	3,545	4,413	3,312	4,154	5,300	5,300
United Arab Emirates	1,311	1,996	1,676	1,627	1,750	1,750
Uzbekistan	1,618	2,698	1,863	2,224	2,100	2,100
Venezuela	1,469	1,686	1,617	1,951	1,800	1,800
Vietnam	2,459	2,711	1,671	2,158	2,100	2,300
Yemen	2,816	2,685	3,149	3,425	3,600	3,300
Others	37,581	44,839	43,646	50,423	47,300	46,925
<b>Subtotal</b>	<b>127,899</b>	<b>148,164</b>	<b>140,151</b>	<b>153,833</b>	<b>152,400</b>	<b>152,525</b>
<b>Unaccounted</b>	<b>3,645</b>	<b>2,630</b>	<b>3,500</b>	<b>3,534</b>	<b>3,520</b>	<b>3,350</b>
<b>United States</b>	<b>2,598</b>	<b>3,024</b>	<b>3,442</b>	<b>4,767</b>	<b>4,200</b>	<b>4,200</b>
<b>World Total</b>	<b>134,142</b>	<b>153,818</b>	<b>147,093</b>	<b>162,134</b>	<b>160,120</b>	<b>160,075</b>

TY=Trade Year, see Endnotes.

**World Wheat Production, Consumption, and Stocks**  
**Local Marketing Years, Thousand Metric Tons**

	2010/11	2011/12	2012/13	2013/14	2014/15 Feb	2014/15 Mar
<b>Production</b>						
Argentina	17,200	15,500	9,300	10,500	12,500	12,500
Australia	27,410	29,905	22,856	26,929	24,000	24,000
Brazil	5,900	5,800	4,380	5,300	6,300	5,900
Canada	23,300	25,288	27,205	37,530	29,300	29,300
China	115,180	117,400	121,023	121,930	126,000	126,000
Egypt	7,200	8,400	8,500	8,250	8,200	8,200
European Union	136,667	138,182	133,949	143,513	155,685	155,685
India	80,800	86,870	94,880	93,510	95,910	95,850
Iran	13,500	12,400	13,800	14,500	13,000	13,000
Kazakhstan	9,638	22,732	9,841	13,941	12,996	12,996
Pakistan	23,900	25,000	23,300	24,000	25,000	25,000
Russia	41,508	56,240	37,720	52,091	59,000	59,000
Turkey	17,000	18,800	16,000	18,750	15,250	15,250
Ukraine	16,844	22,324	15,761	22,278	24,750	24,750
Uzbekistan	6,500	6,300	6,700	6,800	7,150	7,150
Others	48,144	50,388	52,028	58,170	54,864	55,049
<b>Subtotal</b>	590,691	641,529	597,243	657,992	669,905	669,630
<b>United States</b>	58,868	54,244	61,298	58,105	55,129	55,129
<b>World Total</b>	649,559	695,773	658,541	716,097	725,034	724,759
<b>Total Consumption</b>						
Algeria	8,750	8,950	9,450	9,850	10,050	10,050
Australia	5,815	6,505	6,740	6,950	7,000	7,500
Brazil	10,800	11,200	10,900	11,400	12,000	11,600
Canada	7,551	9,852	9,598	10,138	9,830	9,830
China	110,500	122,500	125,000	121,500	124,000	124,000
Egypt	17,700	18,600	18,700	18,500	18,400	18,400
European Union	122,844	127,234	119,250	115,750	124,500	124,500
India	81,760	81,404	83,822	93,852	93,985	93,725
Iran	15,700	14,900	16,400	18,000	18,900	18,900
Morocco	7,850	8,800	8,300	9,000	8,900	9,000
Pakistan	23,000	23,100	23,900	24,100	25,100	25,100
Russia	38,600	38,000	33,550	34,100	35,500	35,500
Turkey	17,300	18,100	17,650	17,750	17,500	17,500
Ukraine	11,600	14,950	11,400	11,500	12,000	12,000
Uzbekistan	7,700	7,800	8,000	8,400	8,900	8,900
Others	135,395	144,180	146,221	150,135	153,103	152,688
<b>Subtotal</b>	623,988	665,016	642,021	670,048	682,428	682,283
<b>United States</b>	29,424	31,962	37,768	34,154	32,221	32,250
<b>World Total</b>	653,412	696,978	679,789	704,202	714,649	714,533
<b>Ending Stocks</b>						
Australia	8,184	7,051	4,654	6,162	6,392	5,812
Canada	7,360	5,932	5,052	9,652	6,602	6,602
China	59,091	55,946	53,960	60,274	62,774	62,774
European Union	11,934	13,516	10,815	10,635	16,320	15,820
India	15,360	19,950	24,200	17,830	16,300	16,500
Russia	13,736	10,899	4,952	5,209	9,059	9,059
Ukraine	3,341	5,363	2,579	3,670	5,470	5,470
Others	55,553	57,973	49,843	57,991	56,095	56,873
<b>Subtotal</b>	174,559	176,630	156,055	171,423	179,012	178,910
<b>United States</b>	23,487	20,211	19,538	16,065	18,833	18,804
<b>World Total</b>	198,046	196,841	175,593	187,488	197,845	197,714



## Regional Wheat Imports, Production, Consumption, and Stocks

Thousand Metric Tons

	2010/11	2011/12	2012/13	2013/14	Feb 2014/15	Mar 2014/15
<b>TY Imports</b>						
North America	6,431	8,541	7,753	9,844	9,280	9,280
Central America	1,684	1,666	1,662	1,833	1,820	1,820
South America	13,158	13,779	14,392	14,806	13,835	13,945
European Union - 28	4,621	7,362	5,277	3,982	5,500	5,500
Other Europe	1,614	1,913	1,633	1,840	1,940	1,940
Former Soviet Union - 12	5,498	8,022	7,228	7,389	7,635	7,510
Middle East	17,324	23,065	24,175	28,304	30,155	29,755
North Africa	24,427	24,855	22,052	25,240	24,350	24,150
Sub-Saharan Africa	15,093	18,484	17,437	19,065	20,050	20,050
East Asia	13,889	16,865	17,352	19,463	13,635	13,535
South Asia	7,593	5,489	5,312	6,716	7,415	7,415
Southeast Asia	16,341	18,016	16,356	17,109	17,950	18,750
Others	2,824	3,131	2,964	3,009	3,035	3,075
<b>Total</b>	<b>130,497</b>	<b>151,188</b>	<b>143,593</b>	<b>158,600</b>	<b>156,600</b>	<b>156,725</b>
<b>Production</b>						
North America	85,844	83,160	91,734	99,012	88,089	88,089
South America	27,560	25,766	18,404	19,985	24,150	23,750
European Union - 28	136,667	138,182	133,949	143,513	155,685	155,685
Other Europe	3,188	3,597	3,504	4,409	3,854	3,854
Former Soviet Union - 12	81,027	114,985	77,802	103,873	112,346	112,646
Middle East	38,638	39,282	36,880	41,708	35,280	35,165
North Africa	15,914	18,366	17,320	19,722	16,800	16,800
Sub-Saharan Africa	5,379	6,054	6,544	7,363	7,473	7,473
East Asia	116,355	118,775	122,483	123,244	127,461	127,461
South Asia	110,949	117,132	126,390	125,710	129,205	129,145
Oceania	27,855	30,288	23,345	27,377	24,510	24,510
Others	183	186	186	181	181	181
<b>Total</b>	<b>649,559</b>	<b>695,773</b>	<b>658,541</b>	<b>716,097</b>	<b>725,034</b>	<b>724,759</b>
<b>Domestic Consumption</b>						
North America	43,425	49,414	53,991	50,942	48,801	48,830
South America	25,598	26,121	26,433	27,112	27,985	27,675
European Union - 28	122,844	127,234	119,250	115,750	124,500	124,500
Other Europe	4,723	4,871	4,696	4,937	4,955	4,955
Former Soviet Union - 12	75,710	79,980	71,725	73,075	75,885	75,885
Middle East	54,406	56,273	56,813	59,857	60,890	60,150
North Africa	38,805	40,927	41,421	42,424	42,350	42,250
Sub-Saharan Africa	20,647	22,473	23,071	25,289	26,348	26,348
East Asia	123,952	137,057	140,083	135,338	137,075	137,075
South Asia	117,003	115,834	121,167	131,946	133,685	133,425
Southeast Asia	14,977	16,665	16,535	16,619	17,405	17,830
Oceania	6,845	7,819	8,106	8,275	8,360	8,860
Others	3,354	3,369	3,358	3,515	3,650	3,660
<b>Total</b>	<b>652,289</b>	<b>688,037</b>	<b>686,649</b>	<b>695,079</b>	<b>711,889</b>	<b>711,443</b>
<b>Ending Stocks</b>						
North America	31,164	26,718	24,868	26,036	25,764	25,735
South America	8,574	3,991	3,464	6,994	6,509	6,709
European Union - 28	11,934	13,516	10,815	10,635	16,320	15,820
Other Europe	1,182	1,327	1,046	1,086	1,055	1,055
Former Soviet Union - 12	22,719	26,006	13,936	15,019	21,375	21,635
Middle East	12,774	11,686	13,114	16,329	16,294	16,469
North Africa	12,194	14,094	11,441	13,480	11,730	11,630
Sub-Saharan Africa	1,330	2,312	2,056	2,315	2,235	2,235
East Asia	62,143	59,235	57,502	63,463	65,939	65,839
South Asia	21,079	25,448	28,173	21,730	20,240	20,440
Southeast Asia	3,991	4,703	3,854	3,558	3,358	3,713
Oceania	8,580	7,415	4,957	6,455	6,655	6,075
Others	382	390	367	388	371	359
<b>Total</b>	<b>198,046</b>	<b>196,841</b>	<b>175,593</b>	<b>187,488</b>	<b>197,845</b>	<b>197,714</b>

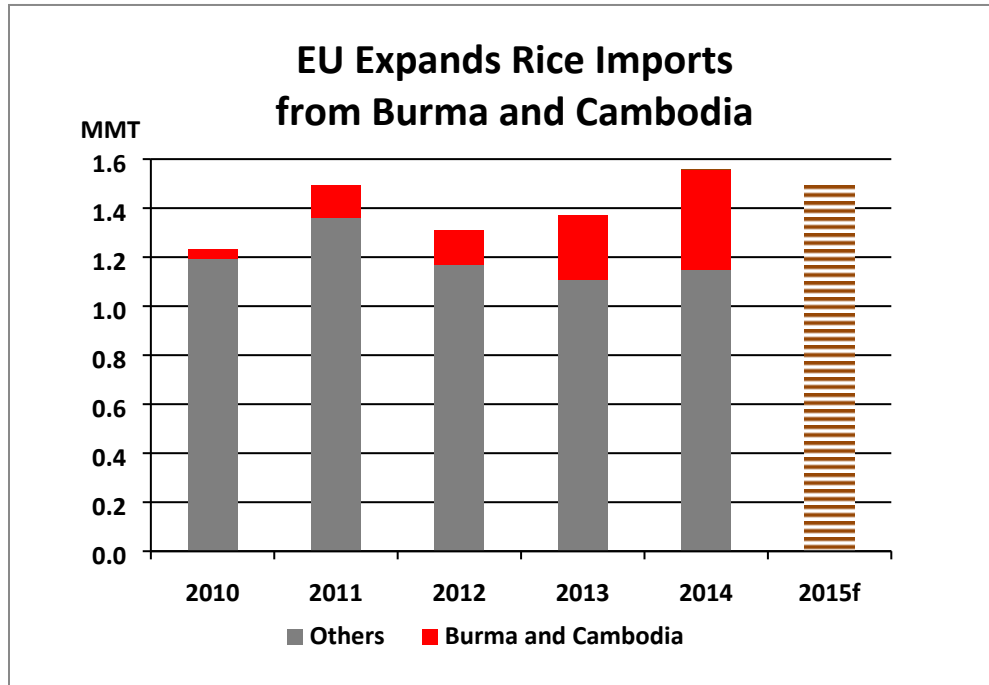
NOTES: Regional definitions appear on last page of this circular. Imports are reported on a trade year basis. All other data are reported using local marketing years.

---

## RICE: WORLD MARKETS AND TRADE

### OVERVIEW

Global production for 2014/15 is revised slightly higher from last month as larger crops for India and Sri Lanka more than offset a reduction in Thailand. Global trade is up driven by stronger demand from China, EU, and Saudi Arabia. Global consumption remains strong, and stocks are lowered. U.S. exports are up slightly.



EU rice imports set a new record in 2014, with sharp increases from Burma and Cambodia. Rice from these two countries nearly doubled from a year earlier and accounted for more than a quarter of total imports. In comparison, purchases from traditional suppliers – Thailand, Pakistan, and India – remained largely stable. Under the Everything-But-Arms arrangement, implemented in September 2009, the EU allows eligible Least Developed Countries duty-free and quota-free access for all types of rice, though only Burma and Cambodia export substantial quantities. With growing supplies, improved logistics, and preferential access, the two countries are expected to capture a significant share of the EU rice market for the foreseeable future.

### TRADE CHANGES IN 2014 Based on Final Data

#### **Selected Exporters**

- **Burma** is boosted 113,000 tons to 1.7 million.

- 
- **India** is up 101,000 tons to a record 10.9 million.

#### **Selected Importers**

- **Bangladesh** is cut 150,000 tons to 700,000.
- **Malaysia** is down 111,000 tons to 989,000.
- **Nigeria** is up 200,000 tons to 3.2 million.
- **Philippines** is raised 100,000 tons to 1.8 million.
- **South Africa** is reduced 100,000 tons to 900,000.
- **Sri Lanka** is boosted 100,000 tons to 600,000.

#### **SELECTED TRADE CHANGES FOR 2015**

- **India's** exports are boosted 300,000 tons to 9.0 million on a larger crop.
- **China's** imports are up 200,000 tons to a record 4.5 million on improved trade prospects from neighboring countries.
- **EU** imports are boosted 100,000 tons to 1.5 million to reflect increasing purchases from eligible Least Developed Countries under the Everything-But-Arms arrangement.
- **Malaysia's** imports are lowered 100,000 tons to 1.0 million on a moderate year-to-year growth.
- **Saudi Arabia's** imports are up 175,000 tons to 1.5 million reflecting strong demand.

**World Rice Trade**  
**January/December Year, Thousand Metric Tons**

	2010/11	2011/12	2012/13	2013/14	2014/15 Feb	2014/15 Mar
<b>TY Exports</b>						
Argentina	732	608	526	494	580	580
Australia	311	449	460	404	400	400
Brazil	1,296	1,105	830	850	800	800
Burma	1,075	1,357	1,163	1,663	1,550	1,600
Cambodia	860	900	1,075	1,000	1,200	1,200
China	487	267	447	393	400	400
Egypt	320	600	700	600	500	500
European Union	237	194	203	284	220	220
Guyana	260	265	346	500	500	500
India	4,637	10,250	10,480	10,901	8,700	9,000
Pakistan	3,414	3,399	4,126	3,400	3,900	3,900
Paraguay	208	262	365	350	400	400
Thailand	10,647	6,945	6,722	10,969	11,000	11,000
Uruguay	841	1,056	939	957	950	950
Vietnam	7,000	7,717	6,700	6,325	6,700	6,700
Others	1,002	1,259	1,157	1,092	1,037	1,067
<b>Subtotal</b>	<b>33,327</b>	<b>36,633</b>	<b>36,239</b>	<b>40,182</b>	<b>38,837</b>	<b>39,217</b>
<b>United States</b>	<b>3,246</b>	<b>3,298</b>	<b>3,293</b>	<b>3,042</b>	<b>3,400</b>	<b>3,400</b>
<b>World Total</b>	<b>36,573</b>	<b>39,931</b>	<b>39,532</b>	<b>43,224</b>	<b>42,237</b>	<b>42,617</b>
<b>TY Imports</b>						
Angola	275	360	430	496	450	450
Bangladesh	1,486	53	114	700	600	600
Brazil	591	732	712	610	700	700
Cameroon	310	450	550	610	525	525
China	575	2,900	3,483	4,168	4,300	4,500
Cote d'Ivoire	935	1,375	940	1,200	1,200	1,200
Cuba	558	330	413	377	450	450
European Union	1,496	1,313	1,375	1,556	1,400	1,500
Ghana	620	595	725	590	620	620
Indonesia	3,098	1,960	650	1,225	1,300	1,300
Iran	1,870	1,500	2,220	1,650	1,700	1,700
Iraq	1,036	1,478	1,294	1,080	1,250	1,250
Japan	742	650	690	657	700	700
Kenya	335	400	410	440	480	480
Korea, South	532	238	580	372	450	450
Malaysia	1,076	1,006	885	989	1,100	1,000
Mexico	705	680	746	658	775	775
Mozambique	360	445	500	500	520	520
Nigeria	2,550	3,400	2,400	3,200	3,500	3,500
Philippines	1,200	1,500	1,000	1,800	1,700	1,700
Saudi Arabia	1,059	1,193	1,326	1,410	1,325	1,500
Senegal	805	1,200	1,075	1,250	1,200	1,200
South Africa	885	870	990	900	1,100	1,100
United Arab Emirates	420	430	440	450	460	460
Venezuela	300	375	500	480	425	500
Others	9,588	11,151	11,491	12,732	11,068	11,048
<b>Subtotal</b>	<b>33,407</b>	<b>36,584</b>	<b>35,939</b>	<b>40,100</b>	<b>39,298</b>	<b>39,728</b>
<b>Unaccounted</b>	<b>2,545</b>	<b>2,707</b>	<b>2,918</b>	<b>2,370</b>	<b>2,269</b>	<b>2,219</b>
<b>United States</b>	<b>621</b>	<b>640</b>	<b>675</b>	<b>754</b>	<b>670</b>	<b>670</b>
<b>World Total</b>	<b>36,573</b>	<b>39,931</b>	<b>39,532</b>	<b>43,224</b>	<b>42,237</b>	<b>42,617</b>

TY=Trade Year, see Endnotes.

Note about dates: 2014/15 is calendar year 2015, 2013/14 is calendar year 2014, and so on.

**World Rice Production, Consumption, and Stocks**  
**Local Marketing Years, Thousand Metric Tons**

	2010/11	2011/12	2012/13	2013/14	2014/15 Feb	2014/15 Mar
<b>Milled Production</b>						
Bangladesh	31,700	33,700	33,820	34,390	34,600	34,600
Brazil	9,300	7,888	8,037	8,300	8,300	8,300
Burma	11,060	11,473	11,715	11,957	12,150	12,150
Cambodia	4,233	4,268	4,670	4,725	4,700	4,700
China	137,000	140,700	143,000	142,530	144,500	144,500
Egypt	3,100	4,250	4,675	4,750	4,500	4,500
India	95,980	105,310	105,240	106,540	102,000	102,500
Indonesia	35,500	36,500	36,550	36,300	36,500	36,500
Japan	7,720	7,646	7,756	7,832	7,679	7,679
Korea, South	4,295	4,224	4,006	4,230	4,241	4,241
Nepal	2,680	2,970	3,000	3,361	3,100	3,100
Pakistan	5,000	6,200	5,800	6,700	6,500	6,500
Philippines	10,539	10,710	11,428	11,858	12,200	12,200
Thailand	20,262	20,460	20,200	20,460	19,500	19,150
Vietnam	26,371	27,152	27,537	28,161	28,250	28,250
Others	37,627	37,686	38,216	38,869	38,768	38,918
<b>Subtotal</b>	<b>442,367</b>	<b>461,137</b>	<b>465,650</b>	<b>470,963</b>	<b>467,488</b>	<b>467,788</b>
<b>United States</b>	<b>7,593</b>	<b>5,866</b>	<b>6,348</b>	<b>6,117</b>	<b>7,068</b>	<b>7,068</b>
<b>World Total</b>	<b>449,960</b>	<b>467,003</b>	<b>471,998</b>	<b>477,080</b>	<b>474,556</b>	<b>474,856</b>
<b>Consumption and Residual</b>						
Bangladesh	32,400	34,300	34,500	34,900	35,300	35,300
Brazil	8,200	7,928	7,850	7,900	7,900	7,900
Burma	10,100	10,200	10,400	10,450	10,700	10,600
Cambodia	3,370	3,400	3,550	3,650	3,700	3,700
China	135,000	139,600	144,000	146,300	148,000	148,400
Egypt	3,300	3,620	4,050	4,000	4,000	4,000
India	90,206	93,334	94,031	99,180	99,151	99,351
Indonesia	38,044	38,188	38,127	38,500	39,200	39,200
Iran	3,250	3,300	3,350	3,400	3,450	3,450
Japan	8,200	8,050	8,250	8,250	8,200	8,200
Korea, South	5,175	4,880	4,489	4,460	4,450	4,450
Nigeria	4,800	5,600	5,300	5,800	6,100	6,100
Philippines	12,900	12,860	12,850	12,850	13,200	13,200
Thailand	10,300	10,400	10,600	10,875	10,900	10,900
Vietnam	19,400	19,650	21,900	22,000	21,900	21,900
Others	53,813	56,828	58,791	60,948	60,120	60,280
<b>Subtotal</b>	<b>440,638</b>	<b>456,292</b>	<b>464,900</b>	<b>476,778</b>	<b>478,942</b>	<b>479,484</b>
<b>United States</b>	<b>4,329</b>	<b>3,492</b>	<b>3,779</b>	<b>3,996</b>	<b>4,190</b>	<b>4,190</b>
<b>World Total</b>	<b>444,967</b>	<b>459,784</b>	<b>468,679</b>	<b>480,774</b>	<b>483,132</b>	<b>483,674</b>
<b>Ending Stocks</b>						
China	42,574	45,023	46,826	46,814	46,914	46,914
European Union	1,215	1,146	1,188	1,191	1,182	1,185
India	23,500	25,100	25,440	22,651	16,800	16,800
Indonesia	7,131	7,403	6,476	5,501	4,101	4,101
Japan	2,712	2,747	2,742	2,778	2,757	2,757
Philippines	2,459	1,509	1,487	1,695	2,295	2,295
Thailand	5,615	9,330	12,808	11,724	9,624	9,274
Others	12,891	13,269	12,026	13,076	13,204	13,004
<b>Subtotal</b>	<b>98,097</b>	<b>105,527</b>	<b>108,993</b>	<b>105,430</b>	<b>96,877</b>	<b>96,330</b>
<b>United States</b>	<b>1,514</b>	<b>1,303</b>	<b>1,156</b>	<b>1,025</b>	<b>1,339</b>	<b>1,307</b>
<b>World Total</b>	<b>99,611</b>	<b>106,830</b>	<b>110,149</b>	<b>106,455</b>	<b>98,216</b>	<b>97,637</b>

Note: All data are reported on a milled basis.

## Regional Rice Imports, Production, Consumption, and Stocks

Thousand Metric Tons

	2010/11	2011/12	2012/13	2013/14	Feb 2014/15	Mar 2014/15
<b>TY Imports</b>						
North America	1,654	1,664	1,776	1,777	1,795	1,795
Caribbean	1,099	845	980	924	1,025	1,025
South America	1,396	1,896	1,843	1,848	1,937	1,992
Other Europe	128	114	125	91	130	130
Former Soviet Union - 12	366	456	544	526	441	441
Middle East	6,099	6,455	7,152	6,710	6,540	6,715
North Africa	381	777	487	505	485	485
Sub-Saharan Africa	9,865	12,245	11,850	13,191	12,930	12,930
East Asia	2,444	4,389	5,332	5,739	6,060	6,260
South Asia	1,864	737	722	2,000	1,350	1,350
Southeast Asia	6,418	5,488	3,606	5,020	5,150	5,050
Others	2,314	2,158	2,197	2,523	2,125	2,225
<b>Total</b>	<b>34,028</b>	<b>37,224</b>	<b>36,614</b>	<b>40,854</b>	<b>39,968</b>	<b>40,398</b>
<b>Production</b>						
North America	7,739	5,979	6,479	6,248	7,223	7,223
Caribbean	943	1,002	974	1,040	1,079	1,079
South America	17,197	15,215	15,852	16,384	16,604	16,604
European Union - 28	2,172	2,139	2,100	1,965	1,974	1,974
Former Soviet Union - 12	1,321	1,294	1,294	1,205	1,250	1,250
Middle East	2,131	2,170	2,251	2,450	2,410	2,410
North Africa	3,139	4,289	4,704	4,789	4,500	4,500
Sub-Saharan Africa	13,313	12,904	12,792	13,158	13,023	13,023
East Asia	151,636	155,342	157,692	157,585	159,251	159,251
South Asia	138,116	151,656	150,892	154,286	149,400	150,050
Southeast Asia	111,008	113,649	115,450	116,682	116,651	116,301
Others	1,245	1,364	1,518	1,288	1,191	1,191
<b>Total</b>	<b>449,960</b>	<b>467,003</b>	<b>471,998</b>	<b>477,080</b>	<b>474,556</b>	<b>474,856</b>
<b>Domestic Consumption</b>						
North America	5,429	4,668	4,977	5,233	5,430	5,430
Central America	1,109	1,156	1,181	1,188	1,213	1,213
Caribbean	2,055	1,997	1,959	1,996	2,098	2,098
South America	14,427	14,180	14,404	14,561	14,618	14,658
European Union - 28	3,250	3,300	3,250	3,250	3,260	3,260
Former Soviet Union - 12	1,425	1,422	1,568	1,533	1,461	1,461
Middle East	8,293	8,603	8,854	9,160	9,085	9,165
North Africa	3,677	4,045	4,572	4,480	4,460	4,460
Sub-Saharan Africa	21,598	23,741	24,559	25,659	25,669	25,669
East Asia	151,568	155,886	160,248	162,660	164,135	164,535
South Asia	130,792	136,823	137,570	144,006	144,171	144,421
Southeast Asia	98,530	99,148	101,968	103,036	104,321	104,221
Others	634	661	707	697	540	530
<b>Total</b>	<b>442,787</b>	<b>455,630</b>	<b>465,817</b>	<b>477,459</b>	<b>480,461</b>	<b>481,121</b>
<b>Ending Stocks</b>						
North America	1,734	1,455	1,345	1,176	1,527	1,495
Central America	249	273	241	217	236	211
Caribbean	122	157	104	85	91	91
South America	2,220	1,606	1,491	1,765	1,996	2,018
European Union - 28	1,215	1,146	1,188	1,191	1,182	1,185
Middle East	1,731	1,526	2,039	1,835	1,725	1,765
North Africa	122	487	427	612	637	637
Sub-Saharan Africa	1,360	2,227	1,963	1,762	1,671	1,671
East Asia	46,690	48,899	50,711	50,720	50,978	50,944
South Asia	25,342	27,511	27,019	25,458	19,340	19,437
Southeast Asia	18,599	21,369	23,197	21,305	18,564	17,935
Oceania	27	40	238	206	85	100
Others	200	134	186	123	184	148
<b>Total</b>	<b>99,611</b>	<b>106,830</b>	<b>110,149</b>	<b>106,455</b>	<b>98,216</b>	<b>97,637</b>

NOTES: Regional definitions appear on last page of this circular. Imports are reported on a trade year basis. All other data are reported using local marketing years.

---

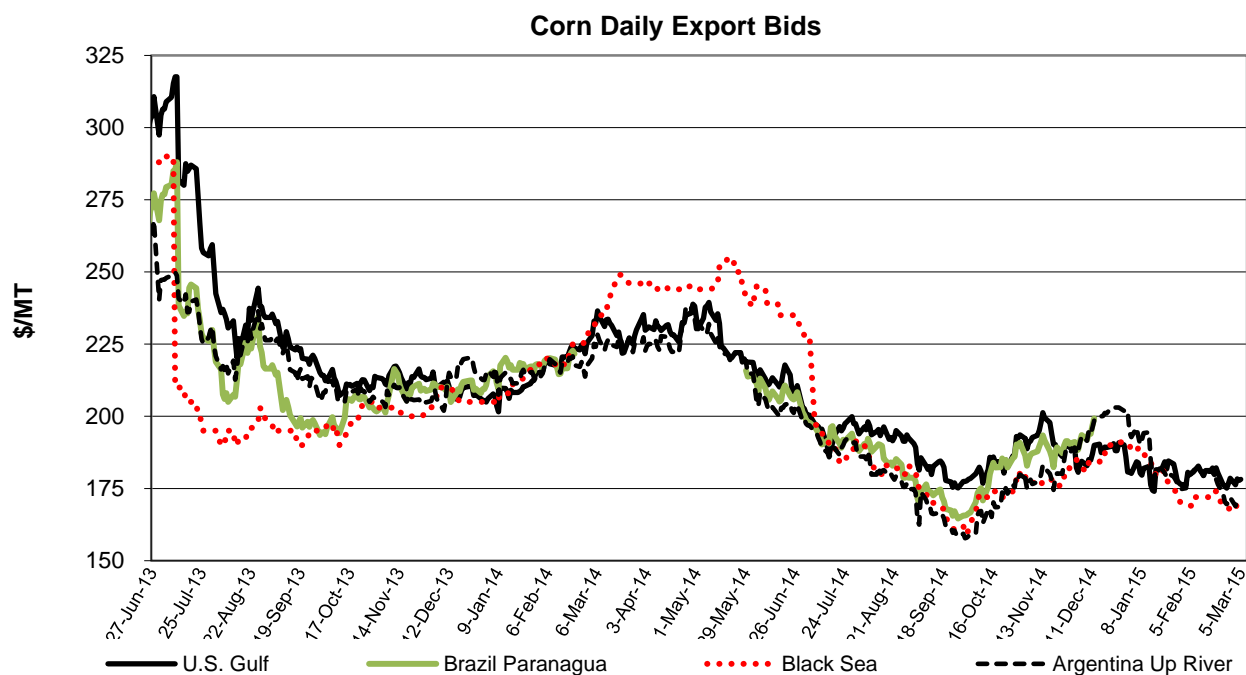
## COARSE GRAINS: WORLD MARKETS AND TRADE

### OVERVIEW

World corn production is lowered as South Africa's crop is cut because of dryness and heat, more than offsetting improved prospects in Argentina. Trade is boosted slightly on stronger demand, primarily from Saudi Arabia as it substitutes corn for barley. Argentine and U.S. corn exports are raised and South Africa's are halved. The U.S. season-average farm price for corn is raised slightly.

### PRICES

Since the release of the February WASDE report, U.S. corn quotes declined only slightly to \$178/ton. Argentine quotes have dropped nearly \$10 to \$171/ton on improved new-crop prospects. Black Sea quotes fell slightly and remain about \$10/ton below U.S. prices. Brazilian quotes were not available as shipments are expected to drop off seasonally with the start of soybean exports.



### TRADE CHANGES IN 2014/15

#### Selected Exporters

- **U.S. corn** is boosted 1.0 million tons to 45.5 million on recent strong sales and shipments and a longer-than-expected window of competitiveness compared with Brazil and Argentina.
- **Argentine corn** is raised 1.0 million tons to 14.5 million on a larger crop.

- 
- **South African corn** is halved to 1.0 million tons because of a sharply lower crop and carryin. (Consumption is revised upward from 2005/06-2009/10 resulting in lower stock levels for subsequent years).
  - **Australian barley** is boosted 500,000 tons to 5.0 million on larger supplies and stronger demand from China.
  - **EU barley** is up 800,000 tons to 7.5 million, the highest level in 15 years, on a robust license pace and stronger demand from China.

### **Selected Importers**

- **Israeli corn** is raised 200,000 tons to 1.7 million as competitively priced corn is expected to replace wheat in feed rations.
- **Saudi corn** is boosted 600,000 tons to 3.5 million on higher compound feed production bolstered by strong demand from the poultry sector. **Barley** is cut 500,000 tons to 6.5 million on abundant supplies and on policies that promote imports of alternative feedstuffs.
- **Chinese barley** is up sharply by 1.5 million tons to a record 6.0 million on strong demand for feedstuffs.
- **Iranian barley** is raised 300,000 tons to 1.5 million as indicated by trade data.



**World Coarse Grain Trade**  
**October/September Year, Thousand Metric Tons**

	2010/11	2011/12	2012/13	2013/14	2014/15 Feb	2014/15 Mar
<b>TY Exports</b>						
Argentina	18,628	22,307	29,496	16,633	16,605	17,605
Australia	4,897	7,279	6,410	7,003	5,600	6,125
Brazil	11,591	12,677	26,078	22,057	22,015	22,015
Canada	4,427	3,853	4,669	5,455	3,600	3,600
European Union	5,865	7,177	8,914	7,839	9,605	10,405
India	3,437	4,858	5,541	4,524	2,850	2,850
Paraguay	1,201	2,188	2,858	2,719	2,000	2,000
Russia	1,029	5,997	4,365	7,044	7,010	7,010
Serbia	2,013	2,345	628	1,761	2,525	2,525
Ukraine	7,490	17,447	15,527	24,124	20,880	20,880
Others	6,195	7,127	7,081	8,179	7,250	6,175
<b>Subtotal</b>	66,773	93,255	111,567	107,338	99,940	101,190
<b>United States</b>	49,247	40,153	20,586	56,920	52,285	53,285
<b>World Total</b>	116,020	133,408	132,153	164,258	152,225	154,475
<b>TY Imports</b>						
Algeria	2,949	3,691	3,280	4,910	4,010	4,010
Brazil	650	1,211	1,240	1,246	1,205	1,205
Canada	1,056	764	523	714	1,535	1,535
Chile	1,271	1,523	1,327	1,656	1,625	1,625
China	2,697	7,924	5,604	12,445	14,125	15,650
Colombia	4,155	4,103	4,088	4,717	4,730	4,730
Dominican Republic	999	1,054	1,046	1,100	1,200	1,200
Egypt	5,840	7,250	5,096	8,553	7,530	7,530
European Union	8,635	6,908	11,777	16,262	8,205	8,205
Indonesia	3,041	1,724	2,719	3,500	2,600	2,600
Iran	4,000	5,700	4,800	6,600	6,700	7,000
Israel	1,446	1,530	1,564	2,044	1,875	2,075
Japan	18,590	17,730	17,743	17,501	17,790	17,790
Jordan	917	1,144	1,202	1,400	1,200	1,200
Korea, South	8,168	7,726	8,265	10,499	9,690	9,690
Libya	543	829	1,220	1,150	1,250	1,250
Malaysia	2,809	3,309	3,048	3,400	3,400	3,400
Mexico	10,760	12,819	7,623	11,321	11,200	11,200
Morocco	2,059	2,479	1,831	2,640	2,700	2,700
Peru	2,079	1,928	2,404	2,349	2,425	2,425
Saudi Arabia	8,138	10,485	12,390	11,331	10,050	10,150
Taiwan	4,277	4,478	4,398	4,561	4,350	4,350
Turkey	496	782	1,922	1,977	2,250	2,250
Venezuela	1,251	2,596	2,146	2,626	2,600	2,600
Vietnam	1,000	1,600	1,700	2,300	2,000	2,000
Others	14,786	15,427	14,095	15,703	16,235	16,135
<b>Subtotal</b>	112,612	126,714	123,051	152,505	142,480	144,505
<b>Unaccounted</b>	959	3,552	2,601	8,436	6,688	6,913
<b>United States</b>	2,449	3,142	6,501	3,317	3,057	3,057
<b>World Total</b>	116,020	133,408	132,153	164,258	152,225	154,475

TY=Trade Year, see Endnotes.

**World Coarse Grains Production, Consumption, and Stocks**  
**Local Marketing Years, Thousand Metric Tons**

	2010/11	2011/12	2012/13	2013/14	2014/15 Feb	2014/15 Mar
<b>Production</b>						
Argentina	33,258	30,105	37,246	35,665	30,516	31,016
Australia	11,485	12,257	11,414	12,449	11,207	11,537
Brazil	60,380	75,884	84,253	82,603	77,713	77,713
Canada	22,668	22,921	24,427	28,745	21,915	21,915
China	183,771	198,635	212,192	225,070	222,150	222,150
Ethiopia	11,193	12,264	12,286	14,468	13,350	13,350
European Union	142,836	149,886	145,887	158,506	168,248	168,248
India	43,370	42,250	39,940	42,920	38,810	39,330
Indonesia	6,800	8,850	8,500	9,100	9,200	9,200
Mexico	29,226	25,689	28,881	32,020	31,140	31,140
Nigeria	20,720	17,421	18,573	19,200	18,600	18,600
Russia	16,416	33,077	28,658	35,735	40,550	40,550
South Africa	11,310	13,268	12,873	15,574	14,096	12,096
Turkey	10,184	11,299	10,595	13,075	9,475	9,475
Ukraine	21,503	33,476	29,527	39,918	39,345	39,345
Others	144,173	146,001	145,695	148,508	152,053	152,244
<b>Subtotal</b>	<b>769,293</b>	<b>833,283</b>	<b>850,947</b>	<b>913,556</b>	<b>898,368</b>	<b>897,909</b>
<b>United States</b>	<b>329,695</b>	<b>322,451</b>	<b>285,311</b>	<b>367,089</b>	<b>377,122</b>	<b>377,122</b>
<b>World Total</b>	<b>1,098,988</b>	<b>1,155,734</b>	<b>1,136,258</b>	<b>1,280,645</b>	<b>1,275,490</b>	<b>1,275,031</b>
<b>Domestic Consumption</b>						
Argentina	11,033	10,510	12,050	13,595	14,431	14,431
Brazil	52,548	53,653	55,803	58,078	59,603	59,603
Canada	21,201	20,285	20,257	22,485	21,490	21,490
China	188,448	196,192	209,671	227,600	234,225	235,750
Egypt	13,332	12,736	12,905	14,080	14,678	14,678
Ethiopia	10,700	11,850	12,150	14,300	14,100	14,100
European Union	154,642	151,460	153,095	164,295	164,920	164,420
India	38,850	37,750	35,275	37,600	35,900	36,400
Indonesia	9,800	10,500	10,900	11,900	12,000	12,000
Japan	18,875	17,990	18,030	17,690	17,990	17,990
Mexico	39,785	37,985	36,195	40,885	41,940	41,940
Nigeria	20,670	17,321	18,700	19,250	18,650	18,650
Russia	18,131	27,728	25,134	28,519	32,400	32,400
Turkey	11,075	11,755	13,005	13,430	13,330	13,330
Ukraine	13,772	15,559	14,661	16,227	16,585	16,585
Others	208,424	214,435	218,259	224,185	232,299	232,049
<b>Subtotal</b>	<b>832,092</b>	<b>866,210</b>	<b>860,198</b>	<b>933,487</b>	<b>949,012</b>	<b>951,668</b>
<b>United States</b>	<b>297,492</b>	<b>288,810</b>	<b>275,537</b>	<b>305,112</b>	<b>313,013</b>	<b>313,014</b>
<b>World Total</b>	<b>1,129,584</b>	<b>1,155,020</b>	<b>1,135,735</b>	<b>1,238,599</b>	<b>1,262,025</b>	<b>1,264,682</b>
<b>Ending Stocks</b>						
Brazil	10,836	9,821	14,559	19,268	18,068	18,068
China	50,126	60,362	68,378	78,260	80,185	80,185
European Union	16,744	15,595	12,878	14,697	16,660	15,860
Iran	4,138	4,734	4,234	4,234	4,334	4,434
Mexico	2,041	1,857	1,624	3,579	3,479	3,479
Saudi Arabia	1,720	3,211	3,391	4,488	3,989	4,073
Ukraine	2,149	2,421	2,330	3,330	3,760	3,760
Others	45,383	40,319	35,737	46,539	44,350	41,319
<b>Subtotal</b>	<b>133,137</b>	<b>138,320</b>	<b>143,131</b>	<b>174,395</b>	<b>174,825</b>	<b>171,178</b>
<b>United States</b>	<b>32,288</b>	<b>27,819</b>	<b>23,531</b>	<b>34,313</b>	<b>49,236</b>	<b>47,879</b>
<b>World Total</b>	<b>165,425</b>	<b>166,139</b>	<b>166,662</b>	<b>208,708</b>	<b>224,061</b>	<b>219,057</b>

## Regional Coarse Grains Imports, Production, Consumption, and Stocks

Thousand Metric Tons

	2010/11	2011/12	2012/13	2013/14	Feb 2014/15	Mar 2014/15
<b>TY Imports</b>						
North America	14,265	16,725	14,647	15,352	15,792	15,792
Central America	2,900	2,769	2,470	2,972	3,200	3,200
Caribbean	2,193	2,159	2,327	2,386	2,510	2,510
South America	10,536	11,968	11,804	13,224	13,300	13,200
European Union - 28	8,635	6,908	11,777	16,262	8,205	8,205
Former Soviet Union - 12	1,133	1,038	725	720	780	780
Middle East	18,690	23,348	24,922	26,468	25,590	26,190
North Africa	12,349	15,320	13,037	18,709	16,690	16,690
Sub-Saharan Africa	2,038	3,245	2,675	2,891	3,025	3,025
East Asia	33,888	38,040	36,163	45,111	46,085	47,610
Southeast Asia	7,558	7,317	8,058	10,650	9,280	9,280
Others	876	1,019	947	1,077	1,080	1,080
<b>Total</b>	<b>115,061</b>	<b>129,856</b>	<b>129,552</b>	<b>155,822</b>	<b>145,537</b>	<b>147,562</b>
<b>Production</b>						
North America	381,589	371,061	338,619	427,854	430,177	430,177
South America	106,037	117,970	135,056	131,335	122,201	122,701
European Union - 28	142,836	149,886	145,887	158,506	168,248	168,248
Other Europe	9,996	9,497	6,584	9,478	9,816	9,816
Former Soviet Union - 12	47,474	78,648	68,221	87,627	91,426	91,616
Middle East	19,574	20,398	18,232	20,767	16,736	16,736
North Africa	12,159	11,142	10,129	11,659	10,989	10,989
Sub-Saharan Africa	99,903	100,066	104,204	105,092	104,797	102,797
East Asia	185,806	200,771	214,639	227,508	224,606	224,607
South Asia	50,624	50,314	48,598	51,948	47,858	48,378
Southeast Asia	26,374	28,379	29,138	30,908	31,901	31,901
Oceania	12,030	12,813	12,082	13,095	11,867	12,197
Others	4,586	4,789	4,869	4,868	4,868	4,868
<b>Total</b>	<b>1,098,988</b>	<b>1,155,734</b>	<b>1,136,258</b>	<b>1,280,645</b>	<b>1,275,490</b>	<b>1,275,031</b>
<b>Domestic Consumption</b>						
North America	358,478	347,080	331,989	368,482	376,443	376,444
South America	84,079	85,233	89,388	94,006	97,386	97,311
European Union - 28	154,642	151,460	153,095	164,295	164,920	164,420
Other Europe	8,714	8,374	7,104	7,908	8,196	8,196
Former Soviet Union - 12	41,792	54,403	50,205	55,981	60,118	60,343
Middle East	38,540	40,949	42,798	44,538	45,691	46,191
North Africa	25,390	25,266	24,936	27,450	29,310	29,310
Sub-Saharan Africa	98,891	98,557	103,970	104,278	105,230	104,730
East Asia	221,856	228,717	243,025	261,946	269,176	270,701
South Asia	46,064	45,658	43,484	46,377	44,879	45,379
Southeast Asia	33,139	34,612	35,867	37,811	39,240	39,240
Oceania	7,495	6,518	6,132	6,040	6,567	6,167
Others	9,698	9,692	9,634	10,119	10,398	10,398
<b>Total</b>	<b>1,128,778</b>	<b>1,136,519</b>	<b>1,141,627</b>	<b>1,229,231</b>	<b>1,257,554</b>	<b>1,258,830</b>
<b>Ending Stocks</b>						
North America	37,878	33,066	28,239	42,491	55,674	54,317
South America	20,529	14,143	19,473	25,086	24,220	23,076
European Union - 28	16,744	15,595	12,878	14,697	16,660	15,860
Other Europe	1,455	1,023	611	1,256	1,226	1,226
Former Soviet Union - 12	5,480	6,160	5,037	6,699	8,512	8,552
Middle East	8,157	10,578	9,628	11,606	10,005	10,191
North Africa	4,784	5,447	3,456	5,625	4,374	4,374
Sub-Saharan Africa	8,029	8,935	8,599	9,404	10,426	8,226
East Asia	53,399	63,387	71,030	81,670	83,095	83,061
South Asia	3,086	2,974	2,819	4,112	3,896	3,926
Southeast Asia	3,508	3,061	3,225	4,178	4,299	4,299
Oceania	1,583	978	915	1,059	699	974
Others	793	792	752	825	975	975
<b>Total</b>	<b>165,425</b>	<b>166,139</b>	<b>166,662</b>	<b>208,708</b>	<b>224,061</b>	<b>219,057</b>

NOTES: Regional definitions appear on last page of this circular. Imports are reported on a trade year basis. All other data are reported using local marketing years.

**World Corn Trade**  
**October/September Year, Thousand Metric Tons**

	2010/11	2011/12	2012/13	2013/14	2014/15 Feb	2014/15 Mar
<b>TY Exports</b>						
Argentina	15,198	16,501	22,789	12,846	13,500	14,500
Brazil	11,582	12,674	26,044	22,041	22,000	22,000
Burma	175	200	550	600	600	600
European Union	1,096	3,287	2,193	2,401	2,500	2,500
India	3,376	4,674	4,768	3,889	2,500	2,500
Paraguay	1,201	2,188	2,858	2,714	2,000	2,000
Russia	37	2,027	1,917	4,192	2,500	2,500
Serbia	2,004	2,331	601	1,736	2,500	2,500
South Africa	2,839	1,831	2,398	2,104	2,000	1,000
Ukraine	5,008	15,157	12,726	20,004	18,000	18,000
Others	4,031	4,465	5,406	6,461	4,290	4,215
<b>Subtotal</b>	46,547	65,335	82,250	78,988	72,390	72,315
<b>United States</b>	45,162	38,389	18,262	50,707	44,500	45,500
<b>World Total</b>	91,709	103,724	100,512	129,695	116,890	117,815
<b>TY Imports</b>						
Algeria	2,683	3,203	2,909	4,200	3,400	3,400
Canada	984	747	493	679	1,500	1,500
Chile	526	906	844	1,456	1,300	1,300
China	979	5,231	2,702	3,277	2,500	2,500
Colombia	3,511	3,209	3,264	4,333	4,200	4,200
Cuba	838	746	911	900	900	900
Dominican Republic	999	1,054	1,046	1,100	1,200	1,200
Egypt	5,803	7,154	5,059	8,500	7,500	7,500
European Union	7,385	6,113	11,362	15,919	8,000	8,000
Guatemala	676	691	678	750	850	850
Indonesia	3,041	1,724	2,719	3,500	2,600	2,600
Iran	3,500	4,000	3,700	5,500	5,500	5,500
Israel	1,029	1,221	1,224	1,652	1,500	1,700
Japan	15,648	14,892	14,412	15,121	15,400	15,400
Korea, South	8,107	7,636	8,174	10,406	9,600	9,600
Malaysia	2,809	3,309	3,048	3,400	3,400	3,400
Mexico	8,252	11,172	5,676	10,954	10,900	10,900
Morocco	1,738	1,943	1,684	2,200	2,200	2,200
Peru	1,939	1,772	2,254	2,232	2,300	2,300
Saudi Arabia	1,933	1,816	2,063	2,684	2,900	3,500
Taiwan	4,134	4,341	4,232	4,400	4,200	4,200
Tunisia	677	853	846	1,000	900	900
Turkey	453	729	1,656	1,381	1,500	1,500
Venezuela	1,251	2,596	2,146	2,626	2,600	2,600
Vietnam	1,000	1,600	1,700	2,300	2,000	2,000
Others	10,402	11,753	9,765	11,726	12,260	12,160
<b>Subtotal</b>	90,297	100,411	94,567	122,196	111,110	111,810
<b>Unaccounted</b>	728	2,548	1,680	6,772	5,130	5,355
<b>United States</b>	684	765	4,265	727	650	650
<b>World Total</b>	91,709	103,724	100,512	129,695	116,890	117,815

TY=Trade Year, see Endnotes.

**World Corn Production, Consumption, and Stocks**  
**Local Marketing Years, Thousand Metric Tons**

	2010/11	2011/12	2012/13	2013/14	2014/15 Feb	2014/15 Mar
<b>Production</b>						
Argentina	25,200	21,000	27,000	26,000	23,000	23,500
Brazil	57,400	73,000	81,500	80,000	75,000	75,000
Canada	12,043	11,359	13,060	14,194	11,500	11,500
China	177,245	192,780	205,614	218,490	215,500	215,500
Ethiopia	4,895	6,069	6,158	7,451	6,500	6,500
European Union	58,272	68,123	58,896	64,259	74,160	74,160
India	21,730	21,760	22,260	24,260	22,500	22,500
Indonesia	6,800	8,850	8,500	9,100	9,200	9,200
Mexico	21,058	18,726	21,591	22,880	23,200	23,200
Nigeria	8,800	9,250	7,630	7,700	7,500	7,500
Philippines	7,271	7,130	7,261	7,532	7,900	7,900
Russia	3,075	6,962	8,213	11,635	11,500	11,500
Serbia	6,800	6,400	3,750	6,400	6,850	6,850
South Africa	10,924	12,759	12,365	14,982	13,500	11,500
Ukraine	11,919	22,838	20,922	30,900	28,450	28,450
Others	86,329	88,368	90,084	92,553	93,940	93,810
<b>Subtotal</b>	519,761	575,374	594,804	638,336	630,200	628,570
<b>United States</b>	315,618	312,789	273,192	351,272	361,091	361,091
<b>World Total</b>	835,379	888,163	867,996	989,608	991,291	989,661
<b>Total Consumption</b>						
Argentina	7,300	7,000	7,900	8,800	9,400	9,400
Brazil	49,500	50,500	52,500	55,000	56,500	56,500
Canada	11,761	11,636	11,605	12,700	12,900	12,900
China	180,000	188,000	200,000	212,000	216,000	216,000
Egypt	12,500	11,700	12,000	13,200	13,800	13,800
European Union	64,900	69,500	69,600	76,500	78,500	78,500
India	18,100	17,200	17,500	19,600	20,000	20,000
Indonesia	9,800	10,500	10,900	11,900	12,000	12,000
Japan	15,700	14,900	14,500	15,100	15,400	15,400
Korea, South	8,214	7,815	8,481	9,891	10,100	10,100
Mexico	29,500	29,000	27,000	31,700	33,550	33,550
Philippines	7,200	7,400	7,400	8,000	8,400	8,400
Russia	3,200	4,700	6,400	7,500	9,000	9,000
South Africa	10,650	10,700	11,000	11,500	11,800	11,300
Ukraine	6,500	7,800	8,100	9,900	10,400	10,400
Others	133,602	140,337	140,871	148,543	152,507	153,082
<b>Subtotal</b>	567,401	605,729	601,490	660,088	673,304	674,374
<b>United States</b>	284,549	277,914	262,973	293,045	302,147	302,147
<b>World Total</b>	851,950	883,643	864,463	953,133	975,451	976,521
<b>Ending Stocks</b>						
Brazil	10,278	9,212	14,150	18,950	17,750	17,750
China	49,415	59,335	67,570	77,315	79,215	79,215
Egypt	1,272	2,220	1,069	2,159	1,599	1,599
European Union	5,233	6,682	5,147	6,424	7,584	7,584
Iran	2,790	3,386	2,486	2,986	3,086	3,086
Mexico	1,112	1,316	1,061	2,694	2,744	2,744
Ukraine	1,121	1,051	1,191	2,237	2,337	2,337
Others	27,744	23,805	22,129	28,080	28,906	25,813
<b>Subtotal</b>	98,965	107,007	114,803	140,845	143,221	140,128
<b>United States</b>	28,644	25,122	20,859	31,292	46,419	45,149
<b>World Total</b>	127,609	132,129	135,662	172,137	189,640	185,277

## Regional Corn Imports, Production, Consumption, and Stocks

Thousand Metric Tons

	2010/11	2011/12	2012/13	2013/14	Feb 2014/15	Mar 2014/15
<b>TY Imports</b>						
North America	9,920	12,684	10,434	12,360	13,050	13,050
Central America	2,889	2,766	2,470	2,971	3,200	3,200
South America	8,372	9,886	9,643	11,931	11,720	11,620
European Union - 28	7,385	6,113	11,362	15,919	8,000	8,000
Former Soviet Union - 12	329	328	324	415	415	415
Middle East	9,942	10,686	10,738	13,542	13,950	14,750
North Africa	11,265	13,799	11,145	16,550	14,700	14,700
Sub-Saharan Africa	1,547	2,579	1,999	2,215	2,390	2,390
East Asia	29,024	32,282	29,673	33,309	31,830	31,830
Southeast Asia	7,541	7,304	8,040	10,610	9,260	9,260
Caribbean	2,193	2,159	2,327	2,386	2,510	2,510
Others	574	590	677	715	735	735
<b>Total</b>	<b>90,981</b>	<b>101,176</b>	<b>98,832</b>	<b>122,923</b>	<b>111,760</b>	<b>112,460</b>
<b>Production</b>						
North America	348,719	342,874	307,843	388,346	395,791	395,791
South America	93,105	103,988	119,769	116,826	109,565	110,065
European Union - 28	58,272	68,123	58,896	64,259	74,160	74,160
Other Europe	8,291	7,810	4,915	7,733	8,066	8,066
Former Soviet Union - 12	18,434	34,121	32,310	46,898	43,774	43,644
Middle East	6,448	7,164	6,330	6,753	6,548	6,548
North Africa	6,780	5,722	5,891	6,001	5,951	5,951
Sub-Saharan Africa	57,860	62,092	60,564	64,661	62,946	60,946
East Asia	178,955	194,585	207,760	220,621	217,649	217,649
South Asia	27,663	28,536	29,705	31,900	30,160	30,160
Central America	3,549	3,698	3,740	3,743	3,743	3,743
Southeast Asia	26,135	28,138	28,893	30,663	31,656	31,656
Others	1,168	1,312	1,380	1,204	1,282	1,282
<b>Total</b>	<b>835,379</b>	<b>888,163</b>	<b>867,996</b>	<b>989,608</b>	<b>991,291</b>	<b>989,661</b>
<b>Domestic Consumption</b>						
North America	325,810	318,550	301,578	337,445	348,597	348,597
South America	73,773	74,921	78,356	82,995	85,820	85,745
European Union - 28	64,900	69,500	69,600	76,500	78,500	78,500
Other Europe	6,741	6,392	5,194	5,903	6,160	6,160
Former Soviet Union - 12	13,185	16,420	18,085	21,435	23,260	23,210
Middle East	16,885	17,348	18,131	18,960	20,635	21,335
North Africa	18,525	18,000	18,450	20,450	21,650	21,650
Sub-Saharan Africa	56,618	60,503	60,057	63,134	62,782	62,282
East Asia	209,870	217,047	229,434	243,371	247,985	247,985
South Asia	23,981	23,770	24,480	26,970	27,570	27,570
Southeast Asia	32,893	34,357	35,609	37,560	38,960	38,960
Central America	6,375	6,425	6,200	6,625	6,800	6,800
Others	3,420	3,369	3,556	3,531	3,685	3,685
<b>Total</b>	<b>852,976</b>	<b>866,602</b>	<b>868,730</b>	<b>944,879</b>	<b>972,404</b>	<b>972,479</b>
<b>Ending Stocks</b>						
North America	31,019	27,803	23,469	35,586	50,363	49,093
South America	18,156	12,808	17,538	22,620	22,114	21,070
European Union - 28	5,233	6,682	5,147	6,424	7,584	7,584
Other Europe	1,212	771	353	982	973	973
Former Soviet Union - 12	1,904	2,445	2,004	3,236	3,330	3,325
Middle East	3,918	4,548	3,491	4,426	4,108	4,294
North Africa	2,102	2,960	1,669	3,024	2,515	2,515
Sub-Saharan Africa	6,133	6,733	6,180	7,314	8,503	6,303
East Asia	52,082	61,836	69,729	80,266	81,660	81,660
South Asia	1,549	1,680	2,080	3,239	3,209	3,179
Southeast Asia	3,504	3,058	3,220	4,174	4,295	4,295
Central America	547	564	507	572	690	690
Others	250	241	275	274	296	296
<b>Total</b>	<b>127,609</b>	<b>132,129</b>	<b>135,662</b>	<b>172,137</b>	<b>189,640</b>	<b>185,277</b>

NOTES: Regional definitions appear on last page of this circular. Imports are reported on a trade year basis. All other data are reported using local marketing years.

**World Barley Trade**  
**October/September Year, Thousand Metric Tons**

	2010/11	2011/12	2012/13	2013/14	2014/15 Feb	2014/15 Mar
<b>TY Exports</b>						
Argentina	1,531	3,631	3,647	2,829	1,600	1,600
Australia	4,088	5,819	4,621	6,262	4,500	5,000
Canada	1,052	1,437	1,316	1,714	1,300	1,300
European Union	4,581	3,646	6,473	4,926	6,700	7,500
India	30	52	542	546	300	300
Kazakhstan	224	659	151	575	500	500
Moldova	10	5	20	15	15	15
Russia	969	3,668	2,366	2,762	4,400	4,400
Serbia	9	14	26	25	25	25
Ukraine	2,446	2,166	2,659	3,827	2,700	2,700
Others	35	120	151	44	10	10
<b>Subtotal</b>	14,975	21,217	21,972	23,525	22,050	23,350
<b>United States</b>	222	179	163	336	250	250
<b>World Total</b>	15,197	21,396	22,135	23,861	22,300	23,600
<b>TY Imports</b>						
Algeria	262	479	364	700	600	600
Belarus	25	100	25	50	100	100
Brazil	362	274	369	400	400	400
China	1,656	2,541	2,184	4,891	4,500	6,000
Colombia	251	301	232	275	275	275
Iran	500	1,700	1,100	1,100	1,200	1,500
Israel	287	276	244	275	300	300
Japan	1,359	1,257	1,356	1,294	1,300	1,300
Jordan	544	736	831	950	650	650
Kuwait	317	376	388	400	400	400
Libya	179	183	573	500	550	550
Mexico	26	144	47	108	100	100
Morocco	222	536	147	400	500	500
Peru	83	97	103	100	100	100
Russia	411	372	278	125	100	100
Saudi Arabia	6,200	8,600	10,200	8,500	7,000	6,500
Syria	300	200	300	250	500	500
Tunisia	281	218	764	456	300	300
Turkey	39	46	266	596	750	750
United Arab Emirates	334	524	541	550	550	550
Others	1,259	1,428	951	917	935	935
<b>Subtotal</b>	14,897	20,388	21,263	22,837	21,110	22,410
<b>Unaccounted</b>	152	538	441	502	690	690
<b>United States</b>	148	470	431	522	500	500
<b>World Total</b>	15,197	21,396	22,135	23,861	22,300	23,600

TY=Trade Year, see Endnotes.

**World Barley Production, Consumption, and Stocks**  
**Local Marketing Years, Thousand Metric Tons**

	2010/11	2011/12	2012/13	2013/14	2014/15 Feb	2014/15 Mar
<b>Production</b>						
Algeria	1,500	1,350	1,500	1,500	1,300	1,300
Argentina	2,950	4,500	5,000	4,750	3,000	3,000
Australia	7,995	8,221	7,472	9,669	7,600	7,950
Belarus	1,966	1,979	1,917	1,674	2,100	2,250
Canada	7,627	7,892	8,012	10,237	7,120	7,120
China	1,972	1,637	1,626	1,500	1,550	1,550
Ethiopia	1,703	1,592	1,782	2,053	2,100	2,100
European Union	53,691	51,883	54,875	59,639	59,927	59,927
India	1,350	1,660	1,620	1,750	1,810	1,830
Iran	3,580	2,900	3,400	3,200	3,200	3,200
Kazakhstan	1,313	2,593	1,500	2,539	2,412	2,412
Morocco	2,570	2,340	1,200	2,700	1,700	1,700
Russia	8,350	16,938	13,952	15,389	20,000	20,000
Turkey	5,900	7,000	5,500	7,300	4,000	4,000
Ukraine	8,484	9,098	6,935	7,561	9,450	9,450
Others	8,322	8,592	8,740	9,307	9,081	9,082
<b>Subtotal</b>	119,273	130,175	125,031	140,768	136,350	136,871
<b>United States</b>	3,924	3,370	4,768	4,719	3,849	3,849
<b>World Total</b>	123,197	133,545	129,799	145,487	140,199	140,720
<b>Total Consumption</b>						
Algeria	1,600	1,800	2,000	2,050	2,050	2,050
Argentina	1,135	1,200	1,300	1,600	1,600	1,600
Australia	4,200	3,300	3,000	3,300	3,300	3,000
Belarus	2,000	2,100	2,000	1,800	2,100	2,200
Canada	7,464	6,916	6,809	7,746	6,700	6,700
China	4,050	3,800	4,000	6,300	6,100	7,600
Ethiopia	1,725	1,600	1,725	2,000	2,100	2,100
European Union	56,610	51,200	51,000	53,500	52,500	52,000
Iran	3,900	4,100	4,600	4,600	4,500	4,800
Kazakhstan	1,475	1,825	1,375	2,000	1,900	1,900
Morocco	3,050	3,100	1,900	2,300	2,800	2,800
Russia	9,500	14,300	12,100	12,600	14,400	14,400
Saudi Arabia	6,325	7,225	8,325	8,025	8,525	8,025
Turkey	6,000	6,750	6,200	6,950	6,050	6,050
Ukraine	6,000	6,300	5,100	5,100	4,900	4,900
Others	14,969	15,803	16,138	16,824	16,844	16,844
<b>Subtotal</b>	131,758	131,073	127,043	136,520	137,008	137,994
<b>United States</b>	4,536	4,170	4,638	4,775	4,285	4,286
<b>World Total</b>	136,294	135,243	131,681	141,295	141,293	142,280
<b>Ending Stocks</b>						
Algeria	1,236	1,435	1,194	1,194	1,044	1,044
Canada	1,502	1,195	983	1,924	1,069	1,069
European Union	7,938	6,069	5,071	5,513	6,340	5,540
Iran	1,348	1,348	1,748	1,248	1,248	1,348
Russia	1,386	848	726	973	2,273	2,273
Saudi Arabia	1,323	2,814	3,006	3,996	3,586	3,486
Ukraine	794	1,172	873	883	1,238	1,238
Others	6,862	6,449	5,403	7,424	5,478	5,794
<b>Subtotal</b>	22,389	21,330	19,004	23,155	22,276	21,792
<b>United States</b>	1,945	1,306	1,750	1,791	1,681	1,594
<b>World Total</b>	24,334	22,636	20,754	24,946	23,957	23,386



## Regional Barley Imports, Production, Consumption, and Stocks

Thousand Metric Tons

	2010/11	2011/12	2012/13	2013/14	Feb 2014/15	Mar 2014/15
<b>TY Imports</b>						
North America	227	620	499	639	625	625
South America	922	851	1,064	960	985	985
European Union - 28	288	364	52	58	50	50
Other Europe	189	209	127	175	175	175
Former Soviet Union - 12	648	697	375	280	340	340
Middle East	8,604	12,543	13,956	12,662	11,410	11,210
North Africa	960	1,458	1,885	2,106	1,975	1,975
Sub-Saharan Africa	77	105	57	120	80	80
East Asia	3,107	3,924	3,663	6,314	5,925	7,425
South Asia	8	68	7	30	30	30
Oceania	15	19	9	15	15	15
<b>Total</b>	<b>15,045</b>	<b>20,858</b>	<b>21,694</b>	<b>23,359</b>	<b>21,610</b>	<b>22,910</b>
<b>Production</b>						
North America	12,223	11,749	13,812	15,506	11,519	11,519
South America	3,869	5,530	6,084	5,880	4,145	4,145
European Union - 28	53,691	51,883	54,875	59,639	59,927	59,927
Other Europe	1,142	1,189	1,193	1,268	1,274	1,274
Former Soviet Union - 12	21,574	32,227	25,958	29,153	35,587	35,737
Middle East	11,474	11,691	10,302	12,449	8,648	8,648
North Africa	4,546	4,410	3,309	4,729	4,109	4,109
Sub-Saharan Africa	2,095	2,099	2,283	2,521	2,613	2,613
East Asia	2,290	1,962	1,920	1,800	1,850	1,851
South Asia	1,990	2,267	2,152	2,457	2,517	2,537
Oceania	8,303	8,538	7,911	10,085	8,010	8,360
<b>Total</b>	<b>123,197</b>	<b>133,545</b>	<b>129,799</b>	<b>145,487</b>	<b>140,199</b>	<b>140,720</b>
<b>Domestic Consumption</b>						
North America	12,700	11,786	12,347	13,221	11,685	11,686
South America	2,936	3,077	3,327	3,661	3,695	3,695
European Union - 28	56,610	51,200	51,000	53,500	52,500	52,000
Other Europe	1,339	1,366	1,298	1,423	1,422	1,422
Former Soviet Union - 12	20,587	26,293	22,314	23,500	25,075	25,175
Middle East	19,884	22,016	22,785	23,881	23,281	23,081
North Africa	5,882	6,186	5,555	6,030	6,728	6,728
Sub-Saharan Africa	2,212	2,138	2,290	2,562	2,670	2,670
East Asia	5,847	5,580	5,806	8,055	7,855	9,355
South Asia	1,992	2,197	2,063	1,912	2,018	2,018
Oceania	4,550	3,650	3,425	3,725	3,725	3,425
<b>Total</b>	<b>134,539</b>	<b>135,489</b>	<b>132,210</b>	<b>141,470</b>	<b>140,654</b>	<b>141,255</b>
<b>Ending Stocks</b>						
North America	3,647	2,621	3,014	3,954	2,939	2,852
South America	818	547	685	964	799	799
European Union - 28	7,938	6,069	5,071	5,513	6,340	5,540
Other Europe	193	204	227	221	223	223
Former Soviet Union - 12	2,813	2,735	2,193	2,463	4,200	4,250
Middle East	4,162	5,933	6,042	7,097	5,819	5,819
North Africa	2,612	2,426	1,720	2,524	1,775	1,775
Sub-Saharan Africa	232	283	330	409	432	432
East Asia	659	961	737	796	751	717
South Asia	220	281	144	255	259	279
Oceania	1,040	576	591	750	420	700
<b>Total</b>	<b>24,334</b>	<b>22,636</b>	<b>20,754</b>	<b>24,946</b>	<b>23,957</b>	<b>23,386</b>

NOTES: Regional definitions appear on last page of this circular. Imports are reported on a trade year basis. All other data are reported using local marketing years.

**World Sorghum Trade**  
**October/September Year, Thousand Metric Tons**

	2010/11	2011/12	2012/13	2013/14	2014/15 Feb	2014/15 Mar
<b>TY Exports</b>						
Argentina	1,893	2,163	3,059	953	1,500	1,500
Australia	575	1,185	1,425	405	800	800
Ethiopia	75	75	75	75	75	75
India	31	132	231	89	50	50
Nigeria	60	75	50	50	50	50
Ukraine	34	113	124	229	150	150
Uruguay	0	23	26	30	30	30
Others	147	139	149	162	140	140
<b>Subtotal</b>	<b>2,815</b>	<b>3,905</b>	<b>5,139</b>	<b>1,993</b>	<b>2,795</b>	<b>2,795</b>
<b>United States</b>	<b>3,823</b>	<b>1,549</b>	<b>2,136</b>	<b>5,843</b>	<b>7,500</b>	<b>7,500</b>
<b>World Total</b>	<b>6,638</b>	<b>5,454</b>	<b>7,275</b>	<b>7,836</b>	<b>10,295</b>	<b>10,295</b>
<b>TY Imports</b>						
Chile	729	544	404	150	250	250
China	4	84	631	4,161	7,000	7,000
Colombia	391	592	591	104	250	250
European Union	922	126	291	186	100	100
Japan	1,418	1,481	1,897	1,003	1,000	1,000
Kenya	11	74	102	100	100	100
Mexico	2,379	1,369	1,789	162	100	100
Saudi Arabia	5	69	127	147	150	150
Sudan	200	125	175	75	200	200
Taiwan	97	84	116	111	100	100
Others	564	534	509	594	390	390
<b>Subtotal</b>	<b>6,720</b>	<b>5,082</b>	<b>6,632</b>	<b>6,793</b>	<b>9,640</b>	<b>9,640</b>
<b>Unaccounted</b>	<b>-83</b>	<b>369</b>	<b>400</b>	<b>1,040</b>	<b>648</b>	<b>648</b>
<b>United States</b>	<b>1</b>	<b>3</b>	<b>243</b>	<b>3</b>	<b>7</b>	<b>7</b>
<b>World Total</b>	<b>6,638</b>	<b>5,454</b>	<b>7,275</b>	<b>7,836</b>	<b>10,295</b>	<b>10,295</b>

TY=Trade Year, see Endnotes.

**World Sorghum Production, Consumption, and Stocks**  
**Local Marketing Years, Thousand Metric Tons**

	2010/11	2011/12	2012/13	2013/14	2014/15 Feb	2014/15 Mar
<b>Production</b>						
Argentina	4,400	4,200	4,700	4,400	4,000	4,000
Australia	1,935	2,239	2,230	1,107	2,000	2,000
Brazil	2,314	2,222	2,102	1,890	2,000	2,000
Burkina	1,990	1,500	1,924	1,940	1,900	1,900
Cameroon	1,099	1,150	1,100	1,150	1,150	1,150
Chad	680	648	1,172	745	900	900
China	2,456	2,051	2,556	2,700	2,700	2,700
Ethiopia	3,960	3,951	3,604	4,114	4,000	4,000
India	7,000	6,030	5,300	5,250	5,000	5,000
Mali	1,257	1,191	1,212	820	1,300	1,300
Mexico	7,385	6,425	6,174	8,500	7,300	7,300
Niger	1,300	807	1,376	1,287	1,200	1,200
Nigeria	6,750	6,900	5,943	6,500	6,300	6,300
Sudan	2,630	4,605	4,524	2,249	3,500	3,500
Tanzania	800	807	839	832	840	840
Others	6,432	7,047	6,722	7,011	6,947	6,947
<b>Subtotal</b>	<b>52,388</b>	<b>51,773</b>	<b>51,478</b>	<b>50,495</b>	<b>51,037</b>	<b>51,037</b>
<b>United States</b>	<b>8,775</b>	<b>5,410</b>	<b>6,293</b>	<b>9,966</b>	<b>10,988</b>	<b>10,988</b>
<b>World Total</b>	<b>61,163</b>	<b>57,183</b>	<b>57,771</b>	<b>60,461</b>	<b>62,025</b>	<b>62,025</b>
<b>Total Consumption</b>						
Argentina	1,900	1,900	2,300	2,700	2,900	2,900
Australia	1,405	1,105	1,105	755	1,205	1,205
Brazil	2,075	2,175	2,300	2,000	2,000	2,000
Burkina	1,900	1,500	1,900	1,900	1,900	1,900
Cameroon	1,109	1,175	1,110	1,165	1,175	1,175
Chad	700	650	1,150	850	900	900
China	2,200	2,200	3,200	6,800	9,600	9,600
Ethiopia	3,700	3,700	3,700	4,200	4,200	4,200
India	6,800	6,000	5,150	5,200	4,900	4,900
Japan	1,460	1,475	1,900	1,000	1,000	1,000
Mali	1,300	1,300	1,200	950	1,200	1,200
Mexico	9,400	8,100	8,100	8,300	7,500	7,500
Niger	1,250	950	1,200	1,300	1,300	1,300
Nigeria	6,700	6,800	5,900	6,450	6,250	6,250
Sudan	3,000	4,500	4,700	2,550	3,700	3,700
Others	9,728	9,487	9,169	8,475	8,750	8,750
<b>Subtotal</b>	<b>54,665</b>	<b>54,510</b>	<b>52,856</b>	<b>55,675</b>	<b>59,092</b>	<b>59,092</b>
<b>United States</b>	<b>5,277</b>	<b>3,916</b>	<b>4,796</b>	<b>4,109</b>	<b>3,556</b>	<b>3,556</b>
<b>World Total</b>	<b>59,942</b>	<b>58,426</b>	<b>57,652</b>	<b>59,784</b>	<b>62,648</b>	<b>62,648</b>
<b>Ending Stocks</b>						
Argentina	950	167	784	1,184	984	884
China	467	366	326	376	451	451
Mali	323	214	226	96	196	196
Mexico	724	418	281	643	543	543
Niger	117	24	225	237	162	162
Nigeria	190	215	208	208	208	208
Sudan	399	609	588	357	352	352
Others	2,026	2,054	1,746	1,481	1,343	1,343
<b>Subtotal</b>	<b>5,196</b>	<b>4,067</b>	<b>4,384</b>	<b>4,582</b>	<b>4,239</b>	<b>4,139</b>
<b>United States</b>	<b>697</b>	<b>583</b>	<b>385</b>	<b>864</b>	<b>684</b>	<b>684</b>
<b>World Total</b>	<b>5,893</b>	<b>4,650</b>	<b>4,769</b>	<b>5,446</b>	<b>4,923</b>	<b>4,823</b>

## Regional Sorghum Imports, Production, Consumption, and Stocks

Thousand Metric Tons

	2010/11	2011/12	2012/13	2013/14	Feb 2014/15	Mar 2014/15
<b>TY Imports</b>						
North America	2,380	1,372	2,032	165	107	107
South America	1,218	1,200	1,071	303	565	565
European Union - 28	922	126	291	186	100	100
Other Europe	0	0	0	0	0	0
Middle East	121	101	194	231	205	205
North Africa	120	54	0	43	5	5
Sub-Saharan Africa	399	550	608	531	530	530
East Asia	1,523	1,655	2,650	5,281	8,105	8,105
Southeast Asia	17	13	18	40	20	20
Others	21	14	11	16	10	10
<b>Total</b>	<b>6,721</b>	<b>5,085</b>	<b>6,875</b>	<b>6,796</b>	<b>9,647</b>	<b>9,647</b>
<b>Production</b>						
North America	16,160	11,835	12,467	18,466	18,288	18,288
Central America	287	312	339	335	335	335
Caribbean	128	128	128	128	128	128
South America	7,351	7,124	7,496	7,003	6,762	6,762
European Union - 28	629	671	473	616	736	736
Middle East	853	764	814	800	780	780
North Africa	708	847	763	763	763	763
Sub-Saharan Africa	23,392	24,804	24,793	22,839	24,149	24,149
East Asia	2,460	2,054	2,560	2,704	2,704	2,704
South Asia	7,145	6,175	5,445	5,395	5,145	5,145
Southeast Asia	54	54	55	55	55	55
Oceania	1,935	2,239	2,230	1,107	2,000	2,000
Others	61	176	208	250	180	180
<b>Total</b>	<b>61,163</b>	<b>57,183</b>	<b>57,771</b>	<b>60,461</b>	<b>62,025</b>	<b>62,025</b>
<b>Domestic Consumption</b>						
North America	14,677	12,016	12,896	12,409	11,056	11,056
Central America	300	320	325	335	335	335
Caribbean	128	128	128	128	128	128
South America	5,739	6,006	6,085	5,754	6,202	6,202
European Union - 28	1,535	760	795	795	820	820
Middle East	962	789	1,052	894	985	985
North Africa	857	908	756	794	756	756
Sub-Saharan Africa	23,491	24,852	25,064	23,474	24,664	24,664
East Asia	3,764	3,771	5,221	7,921	10,710	10,710
South Asia	6,955	6,155	5,305	5,359	5,055	5,055
Southeast Asia	61	68	68	61	90	90
Oceania	1,405	1,105	1,105	755	1,205	1,205
Others	30	55	80	25	30	30
<b>Total</b>	<b>59,904</b>	<b>56,933</b>	<b>58,880</b>	<b>58,704</b>	<b>62,036</b>	<b>62,036</b>
<b>Ending Stocks</b>						
North America	1,421	1,001	666	1,507	1,227	1,227
Central America	32	25	39	40	40	40
South America	1,429	695	1,119	1,372	1,197	1,097
European Union - 28	21	14	5	17	13	13
Middle East	35	56	65	58	58	58
North Africa	69	60	66	76	83	83
Sub-Saharan Africa	1,640	1,878	2,032	1,636	1,446	1,446
East Asia	549	451	413	466	540	540
South Asia	327	223	145	108	158	158
Oceania	361	230	195	147	142	142
Others	9	17	24	19	19	19
<b>Total</b>	<b>5,893</b>	<b>4,650</b>	<b>4,769</b>	<b>5,446</b>	<b>4,923</b>	<b>4,823</b>

NOTES: Regional definitions appear on last page of this circular. Imports are reported on a trade year basis. All other data are reported using local marketing years.

**World Oats Trade**  
**October/September Year, Thousand Metric Tons**

	2010/11	2011/12	2012/13	2013/14	2014/15 Feb	2014/15 Mar
<b>TY Exports</b>						
Argentina	6	12	1	5	5	5
Australia	209	174	240	270	225	250
Brazil	9	3	6	5	5	5
Canada	1,496	1,763	1,359	1,728	1,700	1,700
Chile	129	106	42	50	100	100
European Union	113	176	126	293	250	250
Russia	1	18	4	7	10	10
Others	4	6	6	10	10	10
<b>Subtotal</b>	1,967	2,258	1,784	2,368	2,305	2,330
<b>United States</b>	37	28	18	28	30	30
<b>World Total</b>	2,004	2,286	1,802	2,396	2,335	2,360
<b>TY Imports</b>						
Albania	5	0	0	0	0	0
Algeria	4	9	7	10	10	10
Argentina	0	0	0	0	0	0
Bosnia and Herzegovina	3	3	2	5	5	5
Canada	19	11	9	26	10	10
China	58	68	87	116	125	150
Colombia	2	1	1	5	5	5
Ecuador	11	22	19	20	20	20
European Union	4	3	4	3	5	5
Japan	64	54	51	46	50	50
Mexico	103	134	111	97	100	100
Norway	7	49	36	50	40	40
South Africa	15	11	11	25	25	25
Switzerland	49	56	46	50	50	50
Uruguay	11	8	6	5	5	5
Others	12	13	2	0	0	0
<b>Subtotal</b>	367	442	392	458	450	475
<b>Unaccounted</b>	169	114	69	77	185	185
<b>United States</b>	1,468	1,730	1,341	1,861	1,700	1,700
<b>World Total</b>	2,004	2,286	1,802	2,396	2,335	2,360

TY=Trade Year, see Endnotes.

**World Oats Production, Consumption, and Stocks**  
**Local Marketing Years, Thousand Metric Tons**

	2010/11	2011/12	2012/13	2013/14	2014/15 Feb	2014/15 Mar
<b>Production</b>						
Algeria	88	67	110	110	110	110
Argentina	660	345	496	445	460	460
Australia	1,128	1,262	1,121	1,276	1,150	1,130
Belarus	442	448	422	352	450	470
Brazil	379	354	361	380	380	380
Canada	2,451	3,158	2,812	3,906	2,910	2,910
Chile	564	451	680	610	700	700
China	525	600	600	580	600	600
European Union	7,500	7,927	7,909	8,388	7,869	7,869
Kazakhstan	134	258	200	305	226	226
Mexico	111	51	84	90	90	90
Norway	299	231	236	236	236	236
Russia	3,218	5,332	4,027	4,932	5,250	5,250
Turkey	204	218	210	210	210	210
Ukraine	458	506	630	467	610	610
Others	296	372	315	324	327	327
<b>Subtotal</b>	18,457	21,580	20,213	22,611	21,578	21,578
<b>United States</b>	1,188	728	892	938	1,011	1,011
<b>World Total</b>	19,645	22,308	21,105	23,549	22,589	22,589
<b>Total Consumption</b>						
Algeria	89	75	119	120	120	120
Argentina	650	350	500	425	475	475
Australia	900	1,100	925	975	1,000	900
Belarus	475	450	400	375	425	450
Brazil	370	350	350	375	375	375
Canada	1,530	1,361	1,513	1,746	1,600	1,600
Chile	475	325	575	575	600	600
China	625	625	675	700	725	750
European Union	7,793	7,800	7,700	8,200	7,700	7,700
Kazakhstan	130	225	225	275	225	225
Mexico	185	185	195	185	190	190
Norway	295	270	295	270	295	295
Russia	3,450	5,000	4,300	4,900	5,200	5,200
Turkey	210	215	215	215	215	215
Ukraine	475	500	600	475	600	600
Others	467	519	451	488	489	489
<b>Subtotal</b>	18,124	19,589	19,136	20,502	20,394	20,344
<b>United States</b>	2,799	2,499	2,743	2,759	2,623	2,623
<b>World Total</b>	20,923	22,088	21,879	23,261	23,017	22,967
<b>Ending Stocks</b>						
Argentina	76	57	51	66	46	46
Australia	146	134	60	101	86	81
Canada	733	805	506	1,031	651	651
China	84	127	139	135	135	135
European Union	832	796	902	778	702	702
Russia	167	485	203	229	269	269
Ukraine	40	52	81	67	72	72
Others	169	196	206	197	192	187
<b>Subtotal</b>	2,247	2,652	2,148	2,604	2,153	2,143
<b>United States</b>	982	797	527	359	442	442
<b>World Total</b>	3,229	3,449	2,675	2,963	2,595	2,585

## Regional Oats Imports, Production, Consumption, and Stocks

Thousand Metric Tons

	2010/11	2011/12	2012/13	2013/14	Feb 2014/15	Mar 2014/15
<b>TY Imports</b>						
North America	1,590	1,875	1,461	1,984	1,810	1,810
South America	24	31	26	30	30	30
European Union - 28	4	3	4	3	5	5
Other Europe	66	110	86	105	95	95
Former Soviet Union - 12	6	7	0	0	0	0
Middle East	4	4	0	0	0	0
North Africa	4	9	7	10	10	10
Sub-Saharan Africa	15	11	11	25	25	25
East Asia	122	122	138	162	175	200
Oceania	0	0	0	0	0	0
<b>Total</b>	<b>1,835</b>	<b>2,172</b>	<b>1,733</b>	<b>2,319</b>	<b>2,150</b>	<b>2,175</b>
<b>Production</b>						
North America	3,750	3,937	3,788	4,934	4,011	4,011
South America	1,644	1,191	1,577	1,478	1,585	1,585
European Union - 28	7,500	7,927	7,909	8,388	7,869	7,869
Other Europe	428	373	369	370	369	369
Former Soviet Union - 12	4,257	6,549	5,285	6,062	6,542	6,562
Middle East	204	218	210	210	210	210
North Africa	125	163	166	166	166	166
Sub-Saharan Africa	34	57	60	55	55	55
East Asia	527	602	602	582	602	602
Oceania	1,176	1,291	1,139	1,304	1,180	1,160
<b>Total</b>	<b>19,645</b>	<b>22,308</b>	<b>21,105</b>	<b>23,549</b>	<b>22,589</b>	<b>22,589</b>
<b>Domestic Consumption</b>						
North America	4,514	4,045	4,451	4,690	4,413	4,413
South America	1,563	1,092	1,490	1,448	1,525	1,525
European Union - 28	7,793	7,800	7,700	8,200	7,700	7,700
Other Europe	486	478	474	453	487	487
Former Soviet Union - 12	4,535	6,180	5,531	6,031	6,456	6,481
Middle East	210	215	215	215	215	215
North Africa	126	172	175	176	176	176
Sub-Saharan Africa	58	53	72	92	80	80
East Asia	685	685	730	750	775	800
Oceania	948	1,129	943	1,003	1,030	930
<b>Total</b>	<b>20,918</b>	<b>21,849</b>	<b>21,781</b>	<b>23,058</b>	<b>22,857</b>	<b>22,807</b>
<b>Ending Stocks</b>						
North America	1,720	1,605	1,034	1,393	1,096	1,096
South America	126	93	131	130	110	110
European Union - 28	832	796	902	778	702	702
Other Europe	50	48	31	53	30	30
Former Soviet Union - 12	235	592	332	346	412	407
Middle East	10	17	12	7	2	2
North Africa	1	1	1	1	1	1
Sub-Saharan Africa	14	29	28	16	16	16
East Asia	95	134	144	138	140	140
Oceania	146	134	60	101	86	81
<b>Total</b>	<b>3,229</b>	<b>3,449</b>	<b>2,675</b>	<b>2,963</b>	<b>2,595</b>	<b>2,585</b>

NOTES: Regional definitions appear on last page of this circular. Imports are reported on a trade year basis. All other data are reported using local marketing years.

**World Rye Trade**  
**October/September Year, Thousand Metric Tons**

	2010/11	2011/12	2012/13	2013/14	2014/15 Feb	2014/15 Mar
<b>TY Exports</b>						
Belarus	150	25	25	25	25	25
Canada	221	159	181	96	100	100
European Union	71	59	122	201	150	150
Russia	22	284	78	83	100	100
Ukraine	2	9	16	59	25	25
Others	3	4	0	0	0	0
<b>Subtotal</b>	469	540	422	464	400	400
<b>United States</b>	3	8	7	6	5	5
<b>World Total</b>	472	548	429	470	405	405
<b>TY Imports</b>						
European Union	36	302	68	96	50	50
Israel	19	11	34	33	25	25
Japan	101	46	27	37	40	40
Korea, South	11	11	12	8	10	10
Norway	12	11	21	16	15	15
Russia	150	0	25	25	25	25
Switzerland	2	2	9	6	5	5
Others	0	8	1	0	0	0
<b>Subtotal</b>	331	391	197	221	170	170
<b>Unaccounted</b>	-7	-17	11	45	35	35
<b>United States</b>	148	174	221	204	200	200
<b>World Total</b>	472	548	429	470	405	405

TY=Trade Year, see Endnotes.



**World Rye Production, Consumption, and Stocks**  
**Local Marketing Years, Thousand Metric Tons**

	2010/11	2011/12	2012/13	2013/14	2014/15 Feb	2014/15 Mar
<b>Production</b>						
Belarus	735	801	1,082	648	800	950
Canada	237	241	337	223	195	195
Chile	2	59	62	60	70	70
European Union	7,576	6,900	8,763	10,188	8,790	8,790
Russia	1,642	2,967	2,132	3,360	3,300	3,300
Turkey	365	366	370	350	350	350
Ukraine	464	579	676	638	475	475
Others	197	181	183	168	174	174
<b>Subtotal</b>	<b>11,218</b>	<b>12,094</b>	<b>13,605</b>	<b>15,635</b>	<b>14,154</b>	<b>14,304</b>
<b>United States</b>	<b>190</b>	<b>154</b>	<b>166</b>	<b>194</b>	<b>183</b>	<b>183</b>
<b>World Total</b>	<b>11,408</b>	<b>12,248</b>	<b>13,771</b>	<b>15,829</b>	<b>14,337</b>	<b>14,487</b>
<b>Total Consumption</b>						
Argentina	40	45	40	52	40	40
Belarus	650	750	1,000	650	750	900
Canada	136	101	124	108	100	100
Chile	2	59	62	60	70	70
European Union	8,204	7,400	8,700	9,700	8,900	8,900
Japan	105	55	25	40	40	40
Kazakhstan	40	30	50	40	65	65
Russia	1,850	2,850	2,000	3,100	3,300	3,300
Turkey	350	375	375	350	350	350
Ukraine	650	625	625	625	475	475
Others	155	142	170	136	128	128
<b>Subtotal</b>	<b>12,216</b>	<b>12,406</b>	<b>13,205</b>	<b>14,867</b>	<b>14,231</b>	<b>14,381</b>
<b>United States</b>	<b>331</b>	<b>311</b>	<b>387</b>	<b>424</b>	<b>402</b>	<b>402</b>
<b>World Total</b>	<b>12,547</b>	<b>12,717</b>	<b>13,592</b>	<b>15,291</b>	<b>14,633</b>	<b>14,783</b>
<b>Ending Stocks</b>						
Belarus	79	110	167	140	165	165
Canada	51	25	46	44	39	39
European Union	1,013	745	793	1,189	979	979
Japan	14	5	7	4	4	4
Russia	250	129	153	365	290	290
Turkey	32	24	18	18	18	18
Ukraine	189	132	166	128	98	98
Others	5	3	3	6	2	2
<b>Subtotal</b>	<b>1,633</b>	<b>1,173</b>	<b>1,353</b>	<b>1,894</b>	<b>1,595</b>	<b>1,595</b>
<b>United States</b>	<b>20</b>	<b>11</b>	<b>10</b>	<b>7</b>	<b>10</b>	<b>10</b>
<b>World Total</b>	<b>1,653</b>	<b>1,184</b>	<b>1,363</b>	<b>1,901</b>	<b>1,605</b>	<b>1,605</b>

## Regional Rye Imports, Production, Consumption, and Stocks

Thousand Metric Tons

	2010/11	2011/12	2012/13	2013/14	Feb 2014/15	Mar 2014/15
<b>TY Imports</b>						
North America	148	174	221	204	200	200
South America	0	0	0	0	0	0
European Union - 28	36	302	68	96	50	50
Other Europe	14	13	31	22	20	20
Former Soviet Union - 12	150	5	25	25	25	25
Middle East	19	14	34	33	25	25
Sub-Saharan Africa	0	0	0	0	0	0
East Asia	112	57	39	45	50	50
Oceania	0	0	0	0	0	0
<b>Total</b>	<b>479</b>	<b>565</b>	<b>418</b>	<b>425</b>	<b>370</b>	<b>370</b>
<b>Production</b>						
North America	427	395	503	417	378	378
South America	45	107	105	115	113	113
European Union - 28	7,576	6,900	8,763	10,188	8,790	8,790
Other Europe	76	62	47	47	47	47
Former Soviet Union - 12	2,883	4,375	3,940	4,689	4,636	4,786
Middle East	365	366	370	350	350	350
Sub-Saharan Africa	3	3	3	3	3	3
East Asia	0	0	0	0	0	0
Oceania	33	40	40	20	20	20
<b>Total</b>	<b>11,408</b>	<b>12,248</b>	<b>13,771</b>	<b>15,829</b>	<b>14,337</b>	<b>14,487</b>
<b>Domestic Consumption</b>						
North America	467	412	511	532	502	502
South America	45	107	105	115	113	113
European Union - 28	8,204	7,400	8,700	9,700	8,900	8,900
Other Europe	89	75	78	69	67	67
Former Soviet Union - 12	3,190	4,255	3,675	4,415	4,590	4,740
Middle East	369	386	409	383	375	375
Sub-Saharan Africa	3	2	3	3	3	3
East Asia	116	66	37	48	50	50
Oceania	30	40	40	20	20	20
<b>Total</b>	<b>12,513</b>	<b>12,743</b>	<b>13,558</b>	<b>15,285</b>	<b>14,620</b>	<b>14,770</b>
<b>Ending Stocks</b>						
North America	71	36	56	51	49	49
South America	0	0	0	0	0	0
European Union - 28	1,013	745	793	1,189	979	979
Other Europe	0	0	0	0	0	0
Former Soviet Union - 12	523	374	489	639	555	555
Middle East	32	24	18	18	18	18
Sub-Saharan Africa	0	0	0	0	0	0
East Asia	14	5	7	4	4	4
Oceania	0	0	0	0	0	0
<b>Total</b>	<b>1,653</b>	<b>1,184</b>	<b>1,363</b>	<b>1,901</b>	<b>1,605</b>	<b>1,605</b>

NOTES: Regional definitions appear on last page of this circular. Imports are reported on a trade year basis. All other data are reported using local marketing years.



# HISTORICAL DATA SERIES FOR SELECTED REGIONS AND COUNTRIES

---

## CONTENTS

European Union: Grain Supply and Demand.....	36
China: Grain Supply and Demand .....	37
Other Europe: Grain Supply and Demand .....	38
Former Soviet Union: Grain Supply and Demand .....	39
Wheat Supply and Disappearance: Selected Exporters.....	43
Corn Supply and Disappearance: Selected Exporters .....	45
Barley Supply and Disappearance: Selected Exporters .....	47
Sorghum Supply and Disappearance: Selected Exporters .....	48
U.S. Grains: Supply and Distribution.....	49
Total Wheat and Coarse Grains: Supply and Demand.....	50
World Wheat and Coarse Grains: Supply and Demand .....	51
World Corn and Barley: Supply and Demand .....	52
World Rice: Supply and Demand.....	53

**European Union: Grain Supply and Demand**

**Wheat and Coarse Grains Millions of Metric Tons/Hectares**

	<b>Area Harvested</b>	<b>Yield</b>	<b>Production</b>	<b>Imports</b>	<b>Exports</b>	<b>Feed Dom.</b>	<b>Domestic Consumption</b>	<b>Ending Stocks</b>
<b>Wheat</b>								
2003/04	24.5	4.5	111.4	7.4	9.9	52.5	115.8	12.0
2004/05	26.2	5.6	147.7	7.1	14.7	59.3	123.9	28.3
2005/06	26.0	5.1	132.9	6.8	15.7	63.0	128.2	24.0
2006/07	24.7	5.1	125.7	5.2	13.9	60.2	126.2	14.8
2007/08	24.9	4.9	120.8	6.8	12.4	52.4	117.2	12.8
2008/09	26.8	5.7	151.9	7.7	25.4	60.5	127.6	19.4
2009/10	26.0	5.4	139.7	5.4	22.3	57.5	125.6	16.6
2010/11	26.0	5.3	136.7	4.6	23.1	52.5	122.8	11.9
2011/12	25.8	5.3	138.2	7.4	16.7	57.5	127.2	13.5
2012/13	26.0	5.2	133.9	5.3	22.7	51.0	119.3	10.8
2013/14	25.8	5.6	143.5	4.0	31.9	48.0	115.8	10.6
2014/15	26.8	5.8	155.7	5.5	31.5	56.0	124.5	15.8
<b>Coarse Grains</b>								
2003/04	33.2	4.0	134.1	8.2	4.0	111.9	147.7	13.6
2004/05	33.9	5.0	169.1	3.0	4.8	118.9	155.2	25.6
2005/06	33.2	4.5	149.5	2.7	4.3	112.4	150.7	22.8
2006/07	32.4	4.3	140.0	8.1	4.5	112.9	150.6	15.6
2007/08	32.6	4.3	138.7	20.3	4.5	121.6	157.1	13.0
2008/09	34.0	4.8	164.9	3.1	5.7	116.1	154.2	21.3
2009/10	32.9	4.8	157.6	2.9	3.0	114.8	152.4	26.2
2010/11	30.2	4.7	142.8	8.5	6.2	116.9	154.6	16.7
2011/12	30.2	5.0	149.9	7.0	6.5	113.2	151.5	15.6
2012/13	31.4	4.7	145.9	11.8	7.4	113.7	153.1	12.9
2013/14	31.3	5.1	158.5	16.2	8.6	122.4	164.3	14.7
2014/15	31.0	5.4	168.2	8.3	10.9	122.3	164.4	15.9
<b>Wheat and Coarse Grains</b>								
2003/04	57.7	4.3	245.5	15.6	13.9	164.3	263.5	25.6
2004/05	60.1	5.3	316.8	10.0	19.5	178.2	279.1	53.9
2005/06	59.1	4.8	282.3	9.4	20.0	175.4	278.9	46.8
2006/07	57.0	4.7	265.7	13.2	18.5	173.1	276.8	30.4
2007/08	57.5	4.5	259.5	27.1	16.9	174.1	274.2	25.9
2008/09	60.9	5.2	316.8	10.8	31.1	176.6	281.8	40.6
2009/10	58.9	5.0	297.3	8.2	25.3	172.3	278.0	42.8
2010/11	56.2	5.0	279.5	13.1	29.3	169.4	277.5	28.7
2011/12	56.0	5.1	288.1	14.3	23.3	170.7	278.7	29.1
2012/13	57.3	4.9	279.8	17.1	30.0	164.7	272.3	23.7
2013/14	57.2	5.3	302.0	20.2	40.6	170.4	280.0	25.3
2014/15	57.8	5.6	323.9	13.8	42.4	178.3	288.9	31.7

**China: Grain Supply and Demand**

**Wheat and Coarse Grains Millions of Metric Tons/Hectares**

	<b>Area Harvested</b>	<b>Yield</b>	<b>Production</b>	<b>Imports</b>	<b>Exports</b>	<b>Feed Dom.</b>	<b>Domestic Consumption</b>	<b>Ending Stocks</b>
<b>Wheat</b>								
2003/04	22.0	3.9	86.5	3.7	2.8	6.0	104.5	43.3
2004/05	21.6	4.3	92.0	6.7	1.2	4.0	102.0	38.8
2005/06	22.8	4.3	97.4	1.1	1.4	3.5	101.5	34.5
2006/07	23.6	4.6	108.5	0.4	2.8	4.0	102.0	38.6
2007/08	23.7	4.6	109.3	0.0	2.8	8.0	106.0	39.1
2008/09	23.6	4.8	112.5	0.5	0.7	8.0	105.5	45.8
2009/10	24.3	4.7	115.1	1.4	0.9	10.0	107.0	54.4
2010/11	24.3	4.7	115.2	0.9	0.9	13.0	110.5	59.1
2011/12	24.3	4.8	117.4	2.9	1.0	24.0	122.5	55.9
2012/13	24.3	5.0	121.0	3.0	1.0	25.0	125.0	54.0
2013/14	24.1	5.1	121.9	6.8	0.9	21.0	121.5	60.3
2014/15	24.1	5.2	126.0	1.5	1.0	23.0	124.0	62.8
<b>Coarse Grains</b>								
2003/04	27.0	4.6	124.5	1.5	7.7	99.6	138.8	46.0
2004/05	28.0	4.9	138.3	2.1	7.6	100.3	141.1	37.6
2005/06	28.8	5.1	147.8	2.3	3.8	103.5	147.1	36.9
2006/07	31.1	5.1	159.0	1.2	5.5	105.0	153.5	38.0
2007/08	31.9	5.0	159.2	1.2	0.9	106.7	157.9	39.5
2008/09	32.2	5.4	172.4	1.7	0.2	109.1	161.2	52.2
2009/10	33.4	5.1	169.8	3.8	0.2	119.1	173.3	52.3
2010/11	34.6	5.3	183.8	2.7	0.2	128.8	188.4	50.1
2011/12	35.5	5.6	198.6	7.9	0.1	132.0	196.2	60.4
2012/13	37.1	5.7	212.2	5.6	0.1	146.1	209.7	68.4
2013/14	38.4	5.9	225.1	12.4	0.0	161.8	227.6	78.3
2014/15	39.1	5.7	222.2	15.7	0.1	169.7	235.8	80.2
<b>Wheat and Coarse Grains</b>								
2003/04	49.0	4.3	211.0	5.3	10.5	105.6	243.3	89.3
2004/05	49.6	4.6	230.2	8.8	8.8	104.3	243.1	76.4
2005/06	51.6	4.8	245.3	3.4	5.2	107.0	248.6	71.4
2006/07	54.7	4.9	267.4	1.5	8.2	109.0	255.5	76.6
2007/08	55.6	4.8	268.5	1.2	3.7	114.7	263.9	78.6
2008/09	55.8	5.1	284.9	2.1	0.9	117.1	266.7	98.0
2009/10	57.6	4.9	284.9	5.2	1.1	129.1	280.3	106.7
2010/11	58.9	5.1	299.0	3.6	1.1	141.8	298.9	109.2
2011/12	59.8	5.3	316.0	10.9	1.1	156.0	318.7	116.3
2012/13	61.3	5.4	333.2	8.6	1.1	171.1	334.7	122.3
2013/14	62.5	5.6	347.0	19.2	0.9	182.8	349.1	138.5
2014/15	63.2	5.5	348.2	17.2	1.1	192.7	359.8	143.0

**Other Europe: Grain Supply and Demand**

**Wheat and Coarse Grains Millions of Metric Tons/Hectares**

	<b>Area Harvested</b>	<b>Yield</b>	<b>Production</b>	<b>Imports</b>	<b>Exports</b>	<b>Feed Dom.</b>	<b>Domestic Consumption</b>	<b>Ending Stocks</b>
<b>Wheat</b>								
2003/04	1.0	2.7	2.8	1.4	0.0	0.6	4.5	0.7
2004/05	1.1	4.3	4.6	1.4	0.3	0.9	5.2	1.3
2005/06	1.0	3.8	3.8	1.4	0.2	0.9	5.1	1.1
2006/07	1.0	3.6	3.5	1.5	0.3	0.7	4.6	1.2
2007/08	1.0	3.8	3.7	1.9	0.5	1.0	4.8	1.5
2008/09	0.9	4.4	4.0	1.7	0.4	1.2	5.1	1.7
2009/10	1.0	3.9	3.8	1.7	0.5	1.1	5.0	1.7
2010/11	0.9	3.7	3.2	1.6	0.6	0.9	4.7	1.2
2011/12	0.9	4.2	3.6	1.9	0.5	1.0	4.9	1.3
2012/13	0.9	4.1	3.5	1.6	0.7	1.0	4.7	1.0
2013/14	1.0	4.6	4.4	1.8	1.3	1.2	4.9	1.1
2014/15	0.9	4.4	3.9	1.9	0.9	1.2	5.0	1.1
<b>Coarse Grains</b>								
2003/04	2.1	3.1	6.6	0.7	0.1	6.9	7.9	0.7
2004/05	2.1	5.0	10.4	0.5	0.6	8.4	9.5	1.5
2005/06	2.1	4.8	10.2	0.6	1.3	8.6	9.8	1.3
2006/07	2.0	4.9	9.9	0.8	0.9	8.6	9.7	1.3
2007/08	2.0	3.4	6.9	0.9	0.1	6.8	7.9	1.1
2008/09	2.1	4.6	9.7	0.6	1.5	7.6	8.7	1.1
2009/10	2.0	4.9	9.7	0.7	1.4	7.5	8.7	1.4
2010/11	2.0	5.0	10.0	0.7	2.0	7.3	8.7	1.5
2011/12	2.1	4.6	9.5	0.8	2.4	7.0	8.4	1.0
2012/13	2.1	3.2	6.6	0.7	0.6	5.9	7.1	0.6
2013/14	2.0	4.7	9.5	0.8	1.8	6.6	7.9	1.3
2014/15	2.0	4.8	9.8	0.9	2.5	6.9	8.2	1.2
<b>Wheat and Coarse Grains</b>								
2003/04	3.1	3.0	9.4	2.0	0.1	7.4	12.4	1.4
2004/05	3.2	4.8	15.1	1.9	0.9	9.3	14.8	2.8
2005/06	3.1	4.5	14.0	2.0	1.4	9.5	14.9	2.4
2006/07	3.0	4.5	13.4	2.3	1.2	9.3	14.3	2.5
2007/08	3.0	3.5	10.6	2.7	0.6	7.8	12.6	2.6
2008/09	3.0	4.6	13.7	2.3	1.9	8.8	13.8	2.8
2009/10	3.0	4.5	13.5	2.4	1.9	8.5	13.7	3.2
2010/11	2.9	4.6	13.2	2.4	2.6	8.1	13.4	2.6
2011/12	2.9	4.5	13.1	2.7	2.9	8.1	13.2	2.4
2012/13	2.9	3.4	10.1	2.4	1.3	6.9	11.8	1.7
2013/14	3.0	4.6	13.9	2.7	3.0	7.9	12.8	2.3
2014/15	2.9	4.7	13.7	2.8	3.4	8.1	13.2	2.3

**Former Soviet Union: Grain Supply and Demand**  
**Wheat and Coarse Grains Millions of Metric Tons/Hectares**

	<b>Area Harvested</b>	<b>Yield</b>	<b>Production</b>	<b>Imports</b>	<b>Exports</b>	<b>Feed Dom.</b>	<b>Domestic Consumption</b>	<b>Ending Stocks</b>
<b>Wheat</b>								
2008/09	50.6	2.3	115.5	6.6	38.2	25.2	76.5	21.9
2009/10	52.6	2.2	114.0	5.4	37.3	26.5	78.3	25.8
2010/11	45.8	1.8	81.0	5.5	13.9	24.4	75.7	22.7
2011/12	49.7	2.3	115.0	8.0	39.7	28.3	80.0	26.0
2012/13	44.0	1.8	77.8	7.2	25.4	21.5	71.7	13.9
2013/14	47.7	2.2	103.9	7.4	37.1	22.9	73.1	15.0
2014/15	46.6	2.4	112.6	7.5	37.7	24.6	75.9	21.6
<b>Coarse Grains</b>								
2008/09	30.2	2.6	79.2	0.7	17.2	41.5	58.1	9.4
2009/10	27.2	2.5	67.6	0.4	15.0	39.0	55.0	7.4
2010/11	21.9	2.2	47.5	1.2	8.8	28.4	41.8	5.5
2011/12	27.0	2.9	78.6	1.0	24.6	38.6	54.4	6.2
2012/13	27.5	2.5	68.2	0.7	19.9	35.6	50.2	5.0
2013/14	29.4	3.0	87.6	0.7	30.7	40.1	56.0	6.7
2014/15	30.3	3.0	91.6	0.8	30.2	44.2	60.3	8.6

## Former Soviet Union: Grain Supply and Demand (Wheat)

Millions of Tons/Hectares

Country Mktg Year	Area Harvested	Yield	Production	MY Imports	MY Exports	Feed and Residual	Total Consumption	Ending Stocks
<b>Former Soviet Union - 12</b>								
<b>Kazakhstan</b>								
2011/12	13.7	1.7	22.7	0.0	11.8	2.6	7.6	6.2
2012/13	12.4	0.8	9.8	0.0	6.3	2.0	6.8	2.9
2013/14	13.0	1.1	13.9	0.0	8.1	2.0	6.8	2.0
2014/15	11.9	1.1	13.0	0.4	6.0	2.0	6.8	2.6
<b>Russia</b>								
2011/12	24.8	2.3	56.2	0.6	21.6	15.5	38.0	10.9
2012/13	21.3	1.8	37.7	1.2	11.3	11.9	33.6	5.0
2013/14	23.4	2.2	52.1	0.8	18.5	12.5	34.1	5.2
2014/15	23.6	2.5	59.0	0.4	20.0	13.0	35.5	9.1
<b>Ukraine</b>								
2011/12	6.7	3.4	22.3	0.1	5.4	6.1	15.0	5.4
2012/13	5.6	2.8	15.8	0.0	7.2	3.1	11.4	2.6
2013/14	6.6	3.4	22.3	0.1	9.8	3.4	11.5	3.7
2014/15	6.3	3.9	24.8	0.1	11.0	4.0	12.0	5.5
<b>Uzbekistan</b>								
2011/12	1.4	4.5	6.3	2.7	0.7	1.6	7.8	1.4
2012/13	1.4	4.8	6.7	1.9	0.4	1.7	8.0	1.6
2013/14	1.4	4.9	6.8	2.2	0.3	1.9	8.4	1.9
2014/15	1.4	5.1	7.2	2.1	0.3	2.2	8.9	2.0
<b>Other Former Soviet Union - 12</b>								
2011/12	3.2	2.3	7.4	4.7	0.2	2.5	11.6	2.2
2012/13	3.2	2.4	7.8	4.1	0.3	2.8	12.0	1.9
2013/14	3.4	2.6	8.8	4.3	0.4	3.1	12.3	2.2
2014/15	3.4	2.6	8.8	4.6	0.4	3.4	12.7	2.6
<b>Total Former Soviet Union - 12</b>								
2011/12	49.7	2.3	115.0	8.0	39.7	28.3	80.0	26.0
2012/13	44.0	1.8	77.8	7.2	25.4	21.5	71.7	13.9
2013/14	47.7	2.2	103.9	7.4	37.1	22.9	73.1	15.0
2014/15	46.6	2.4	112.6	7.5	37.7	24.6	75.9	21.6



## Former Soviet Union: Grain Supply and Demand (Barley)

Millions of Tons/Hectares

Country Mktg Year	Area Harvested	Yield	Production	MY Imports	MY Exports	Feed and Residual	Total Consumption	Ending Stocks
<b>Former Soviet Union - 12</b>								
<b>Kazakhstan</b>								
2011/12	1.5	1.7	2.6	0.0	0.7	1.5	1.8	0.2
2012/13	1.6	0.9	1.5	0.0	0.2	1.2	1.4	0.2
2013/14	1.8	1.4	2.5	0.0	0.5	1.7	2.0	0.2
2014/15	1.9	1.3	2.4	0.0	0.5	1.6	1.9	0.2
<b>Russia</b>								
2011/12	7.7	2.2	16.9	0.4	3.5	9.8	14.3	0.8
2012/13	7.6	1.8	14.0	0.3	2.2	7.7	12.1	0.7
2013/14	8.0	1.9	15.4	0.1	2.7	8.2	12.6	1.0
2014/15	8.8	2.3	20.0	0.1	4.4	9.5	14.4	2.3
<b>Ukraine</b>								
2011/12	3.7	2.5	9.1	0.0	2.5	4.7	6.3	1.2
2012/13	3.3	2.1	6.9	0.0	2.1	3.5	5.1	0.9
2013/14	3.2	2.3	7.6	0.0	2.5	3.4	5.1	0.9
2014/15	3.2	3.0	9.5	0.0	4.2	3.3	4.9	1.2
<b>Uzbekistan</b>								
2011/12	0.1	3.2	0.2	0.1	0.0	0.3	0.3	0.0
2012/13	0.1	3.2	0.2	0.0	0.0	0.2	0.3	0.0
2013/14	0.1	3.2	0.2	0.0	0.0	0.2	0.3	0.0
2014/15	0.1	3.2	0.2	0.0	0.0	0.2	0.3	0.0
<b>Other Former Soviet Union - 12</b>								
2011/12	1.3	2.6	3.4	0.2	0.0	2.7	3.5	0.5
2012/13	1.2	2.8	3.3	0.1	0.0	2.7	3.5	0.4
2013/14	1.4	2.5	3.4	0.1	0.0	2.7	3.5	0.4
2014/15	1.4	2.6	3.6	0.2	0.0	2.9	3.7	0.5
<b>Total Former Soviet Union - 12</b>								
2011/12	14.3	2.3	32.2	0.7	6.7	19.0	26.3	2.7
2012/13	13.8	1.9	26.0	0.4	4.6	15.2	22.3	2.2
2013/14	14.5	2.0	29.2	0.3	5.7	16.2	23.5	2.5
2014/15	15.4	2.3	35.7	0.3	9.1	17.5	25.2	4.3

## Former Soviet Union: Grain Supply and Demand (Corn)

Millions of Tons/Hectares

Country Mktg Year	Area Harvested	Yield	Production	MY Imports	MY Exports	Feed and Residual	Total Consumption	Ending Stocks
<b>Former Soviet Union - 12</b>								
<b>Kazakhstan</b>								
2011/12	0.1	5.0	0.5	0.0	0.0	0.4	0.5	0.0
2012/13	0.1	5.0	0.5	0.0	0.0	0.4	0.5	0.0
2013/14	0.1	5.3	0.6	0.0	0.0	0.5	0.6	0.0
2014/15	0.1	5.3	0.7	0.0	0.0	0.5	0.6	0.1
<b>Russia</b>								
2011/12	1.6	4.3	7.0	0.0	2.0	4.0	4.7	0.4
2012/13	1.9	4.2	8.2	0.1	1.9	5.6	6.4	0.3
2013/14	2.3	5.0	11.6	0.1	4.2	6.6	7.5	0.3
2014/15	2.6	4.4	11.5	0.1	2.5	8.0	9.0	0.3
<b>Ukraine</b>								
2011/12	3.5	6.4	22.8	0.0	15.2	6.5	7.8	1.1
2012/13	4.4	4.8	20.9	0.0	12.7	6.8	8.1	1.2
2013/14	4.8	6.4	30.9	0.1	20.0	8.5	9.9	2.2
2014/15	4.6	6.2	28.5	0.1	18.0	9.0	10.4	2.3
<b>Uzbekistan</b>								
2011/12	0.0	4.6	0.2	0.0	0.0	0.2	0.2	0.0
2012/13	0.0	3.4	0.1	0.0	0.0	0.1	0.1	0.0
2013/14	0.0	3.4	0.1	0.0	0.0	0.1	0.1	0.0
2014/15	0.0	3.4	0.1	0.0	0.0	0.1	0.1	0.0
<b>Other Former Soviet Union - 12</b>								
2011/12	0.9	4.0	3.7	0.2	0.3	2.9	3.3	1.0
2012/13	1.0	2.7	2.6	0.2	0.4	2.6	3.0	0.5
2013/14	1.0	3.8	3.7	0.3	0.4	3.0	3.4	0.7
2014/15	0.8	3.5	2.9	0.3	0.3	2.8	3.1	0.5
<b>Total Former Soviet Union - 12</b>								
2011/12	6.2	5.5	34.1	0.3	17.5	14.0	16.4	2.4
2012/13	7.4	4.4	32.3	0.3	15.0	15.5	18.1	2.0
2013/14	8.3	5.7	46.9	0.4	24.6	18.7	21.4	3.2
2014/15	8.2	5.3	43.6	0.4	20.8	20.4	23.2	3.3

**Wheat Supply and Disappearance: Selected Exporters**  
**Million Metric Tons/Hectares**

Country Mktg Year	Area Harvested	Yield	Production	MY Imports	MY Exports	Feed and Residual	Total Consumption	Ending Stocks
<b>Wheat Competitors</b>								
<b>Argentina</b>								
2006/07	6.2	2.6	16.3	0.0	10.7	0.1	5.4	0.6
2007/08	6.6	2.8	18.6	0.0	11.2	0.1	5.7	2.4
2008/09	5.3	2.1	11.0	0.0	6.8	0.0	5.3	1.3
2009/10	4.0	3.0	12.0	0.0	5.1	0.0	5.8	2.3
2010/11	4.8	3.6	17.2	0.0	9.5	0.1	6.0	4.1
2011/12	5.2	3.0	15.5	0.0	12.9	0.1	6.0	0.7
2012/13	3.6	2.6	9.3	0.0	3.6	0.3	6.2	0.3
2013/14	3.5	3.0	10.5	0.0	2.2	0.1	6.1	2.6
2014/15	4.2	3.0	12.5	0.0	6.5	0.1	6.2	2.4
<b>Australia</b>								
2006/07	11.8	0.9	10.8	0.1	8.7	4.5	7.4	4.2
2007/08	12.6	1.1	13.6	0.1	7.5	3.5	6.6	3.7
2008/09	13.5	1.6	21.4	0.1	14.7	4.2	7.4	3.1
2009/10	13.9	1.6	21.8	0.1	14.8	1.9	5.2	5.1
2010/11	13.5	2.0	27.4	0.1	18.6	2.5	5.8	8.2
2011/12	13.9	2.2	29.9	0.1	24.7	3.2	6.5	7.1
2012/13	13.0	1.8	22.9	0.1	18.7	3.4	6.7	4.7
2013/14	13.5	2.0	26.9	0.2	18.6	3.6	7.0	6.2
2014/15	13.8	1.7	24.0	0.2	17.0	4.1	7.5	5.8
<b>Canada</b>								
2006/07	9.7	2.6	25.3	0.3	19.4	4.5	9.0	6.9
2007/08	8.6	2.3	20.1	0.4	16.1	2.2	6.9	4.4
2008/09	10.0	2.9	28.6	0.4	18.9	3.1	7.8	6.6
2009/10	9.7	2.8	27.0	0.4	19.0	2.5	7.2	7.7
2010/11	8.3	2.8	23.3	0.4	16.6	2.7	7.6	7.4
2011/12	8.6	3.0	25.3	0.5	17.4	4.7	9.9	5.9
2012/13	9.5	2.9	27.2	0.5	19.0	4.4	9.6	5.1
2013/14	10.4	3.6	37.5	0.4	23.2	4.9	10.1	9.7
2014/15	9.5	3.1	29.3	0.5	23.0	4.5	9.8	6.6
<b>Total Wheat Competitors</b>								
2006/07	27.7	1.9	52.4	0.4	38.9	9.1	21.7	11.6
2007/08	27.8	1.9	52.3	0.5	34.8	5.8	19.1	10.5
2008/09	28.8	2.1	61.0	0.5	40.4	7.3	20.6	11.0
2009/10	27.5	2.2	60.8	0.5	39.0	4.4	18.2	15.1

## Wheat Supply and Disappearance: Selected Exporters (Continued)

Million Metric Tons/Hectares

Country Mktg Year	Area Harvested	Yield	Production	MY Imports	MY Exports	Feed and Residual	Total Consumption	Ending Stocks
2010/11	26.6	2.5	67.9	0.6	44.7	5.3	19.3	19.7
2011/12	27.6	2.6	70.7	0.6	54.9	8.0	22.3	13.7
2012/13	26.1	2.3	59.4	0.6	41.2	8.1	22.5	10.0
2013/14	27.4	2.7	75.0	0.6	44.1	8.6	23.1	18.4
2014/15	27.5	2.4	65.8	0.7	46.5	8.7	23.5	14.9
<b>India</b>								
2006/07	26.4	2.6	69.4	6.7	0.1	2.3	73.5	4.5
2007/08	28.0	2.7	75.8	2.0	0.0	2.5	76.4	5.8
2008/09	28.2	2.8	78.6	0.0	0.0	2.5	70.9	13.4
2009/10	27.8	2.9	80.7	0.2	0.1	2.8	78.2	16.1
2010/11	28.5	2.8	80.8	0.3	0.1	2.9	81.8	15.4
2011/12	29.1	3.0	86.9	0.0	0.9	3.1	81.4	20.0
2012/13	29.9	3.2	94.9	0.0	6.8	3.4	83.8	24.2
2013/14	30.0	3.1	93.5	0.0	6.1	4.8	93.9	17.8
2014/15	30.6	3.1	95.9	0.0	3.5	4.5	93.7	16.5
<b>Turkey</b>								
2006/07	8.6	2.0	17.5	1.7	2.4	0.8	16.7	2.0
2007/08	7.7	2.0	15.5	2.2	1.7	0.8	16.8	1.1
2008/09	7.7	2.2	16.8	3.5	2.2	0.7	16.9	2.2
2009/10	7.8	2.4	18.5	3.2	4.3	0.8	17.1	2.5
2010/11	8.0	2.1	17.0	3.7	3.0	0.8	17.3	2.9
2011/12	7.7	2.4	18.8	3.8	3.7	1.4	18.1	3.8
2012/13	7.8	2.1	16.0	3.6	3.4	0.9	17.7	2.3
2013/14	7.7	2.4	18.8	4.0	4.4	1.0	17.8	2.9
2014/15	7.7	2.0	15.3	5.5	3.8	0.7	17.5	2.3

**Corn Supply and Disappearance: Selected Exporters**  
**Million Metric Tons/Hectares**

Country Mktg Year	Area Harvested	Yield	Production	MY Imports	MY Exports	Feed and Residual	Total Consumption	Ending Stocks
<b>Argentina</b>								
2006/07	2.8	8.0	22.5	0.0	15.4	4.8	6.7	1.7
2007/08	3.4	6.5	22.0	0.0	14.8	4.9	6.8	2.1
2008/09	2.5	6.2	15.5	0.0	10.3	4.5	6.4	0.9
2009/10	3.0	8.3	25.0	0.0	16.5	5.0	6.9	2.5
2010/11	3.8	6.7	25.2	0.0	16.3	5.3	7.3	4.0
2011/12	3.6	5.8	21.0	0.0	17.1	4.8	7.0	0.9
2012/13	4.0	6.8	27.0	0.0	18.7	5.3	7.9	1.3
2013/14	3.4	7.6	26.0	0.0	17.0	5.8	8.8	1.5
2014/15	3.0	8.0	23.5	0.0	14.5	6.1	9.4	1.1
<b>Brazil</b>								
2006/07	14.0	3.6	51.0	1.4	10.8	34.5	41.0	3.6
2007/08	14.7	4.0	58.6	0.7	7.8	36.0	42.5	12.6
2008/09	14.1	3.6	51.0	1.1	7.1	38.5	45.5	12.1
2009/10	12.9	4.3	56.1	0.4	11.6	40.0	47.0	10.0
2010/11	13.8	4.2	57.4	0.8	8.4	42.5	49.5	10.3
2011/12	15.2	4.8	73.0	0.8	24.3	43.0	50.5	9.2
2012/13	15.8	5.2	81.5	0.9	24.9	44.5	52.5	14.2
2013/14	15.8	5.1	80.0	0.8	21.0	46.0	55.0	19.0
2014/15	15.0	5.0	75.0	0.8	20.5	47.5	56.5	17.8
<b>China</b>								
2006/07	28.5	5.3	151.6	0.0	5.3	104.0	145.0	36.6
2007/08	29.5	5.2	152.3	0.0	0.5	106.0	150.0	38.4
2008/09	29.9	5.6	165.9	0.0	0.2	108.0	153.0	51.2
2009/10	31.2	5.3	164.0	1.3	0.2	118.0	165.0	51.3
2010/11	32.5	5.5	177.2	1.0	0.1	128.0	180.0	49.4
2011/12	33.5	5.7	192.8	5.2	0.1	131.0	188.0	59.3
2012/13	35.0	5.9	205.6	2.7	0.1	144.0	200.0	67.6
2013/14	36.3	6.0	218.5	3.3	0.0	154.0	212.0	77.3
2014/15	37.0	5.8	215.5	2.5	0.1	158.0	216.0	79.2
<b>South Africa</b>								
2006/07	2.9	2.5	7.3	1.1	0.5	4.6	9.0	0.5
2007/08	3.3	4.0	13.2	0.0	2.2	4.8	10.1	1.4
2008/09	2.9	4.3	12.6	0.0	1.7	4.7	10.3	2.0
2009/10	3.3	4.1	13.4	0.0	2.1	4.9	10.6	2.8
2010/11	2.9	3.8	10.9	0.4	2.4	5.0	10.7	1.0
2011/12	3.1	4.1	12.8	0.0	1.8	5.0	10.7	1.3

**Corn Supply and Disappearance: Selected Exporters (Continued)**

Million Metric Tons/Hectares

Country Mktg Year	Area Harvested	Yield	Production	MY Imports	MY Exports	Feed and Residual	Total Consumption	Ending Stocks
2012/13	3.2	3.8	12.4	0.1	2.1	5.1	11.0	0.7
2013/14	3.1	4.8	15.0	0.0	2.0	5.4	11.5	2.2
2014/15	3.1	3.7	11.5	0.0	1.0	5.2	11.3	1.4
<b>Total Corn Competitors</b>								
2006/07	48.2	4.8	232.4	2.6	31.9	147.9	201.7	42.3
2007/08	50.9	4.8	246.1	0.8	25.3	151.7	209.4	54.5
2008/09	49.4	5.0	245.0	1.2	19.3	155.7	215.2	66.2
2009/10	50.4	5.1	258.5	1.7	30.3	167.9	229.5	66.5
2010/11	52.9	5.1	270.8	2.2	27.3	180.8	247.5	64.8
2011/12	55.5	5.4	299.5	6.0	43.4	183.8	256.2	70.7
2012/13	58.1	5.6	326.5	3.7	45.8	198.9	271.4	83.7
2013/14	58.6	5.8	339.5	4.1	40.0	211.2	287.3	100.0
2014/15	58.1	5.6	325.5	3.3	36.1	216.8	293.2	99.5

**Barley Supply and Disappearance: Selected Exporters**  
**Million Metric Tons/Hectares**

Country Mktg Year	Area Harvested	Yield	Production	MY Imports	MY Exports	Feed and Residual	Total Consumption	Ending Stocks
<b>Australia</b>								
2006/07	4.2	1.0	4.3	0.0	1.9	2.9	4.0	1.0
2007/08	4.9	1.5	7.2	0.0	3.4	2.1	3.1	1.7
2008/09	5.0	1.6	8.0	0.0	3.2	2.9	4.0	2.4
2009/10	4.4	1.8	7.9	0.0	3.9	3.3	4.5	1.9
2010/11	3.7	2.2	8.0	0.0	4.7	3.0	4.2	1.0
2011/12	3.7	2.2	8.2	0.0	5.4	2.1	3.3	0.5
2012/13	3.6	2.1	7.5	0.0	4.5	1.8	3.0	0.5
2013/14	3.9	2.5	9.7	0.0	6.2	2.0	3.3	0.7
2014/15	3.8	2.1	8.0	0.0	5.0	1.7	3.0	0.6
<b>Canada</b>								
2006/07	3.2	3.0	9.6	0.0	1.2	8.8	10.2	1.5
2007/08	4.0	2.8	10.9	0.1	3.0	6.4	7.8	1.6
2008/09	3.5	3.4	11.8	0.0	1.5	7.6	8.9	3.0
2009/10	2.9	3.3	9.5	0.0	1.3	7.5	8.7	2.5
2010/11	2.4	3.2	7.6	0.0	1.2	6.3	7.5	1.5
2011/12	2.4	3.3	7.9	0.0	1.3	5.7	6.9	1.2
2012/13	2.8	2.9	8.0	0.0	1.4	5.7	6.8	1.0
2013/14	2.7	3.9	10.2	0.0	1.6	6.6	7.7	1.9
2014/15	2.1	3.3	7.1	0.0	1.3	5.5	6.7	1.1
<b>European Union</b>								
2006/07	13.9	4.1	56.4	0.2	3.4	38.9	55.9	5.8
2007/08	13.9	4.2	57.8	0.3	3.8	38.9	54.5	5.7
2008/09	14.6	4.5	65.8	0.3	3.6	41.7	57.3	11.0
2009/10	14.0	4.5	62.4	0.1	1.1	41.7	56.8	15.6
2010/11	12.5	4.3	53.7	0.2	4.9	41.3	56.6	7.9
2011/12	11.9	4.3	51.9	0.5	3.0	35.8	51.2	6.1
2012/13	12.5	4.4	54.9	0.1	4.9	35.5	51.0	5.1
2013/14	12.4	4.8	59.6	0.0	5.7	38.0	53.5	5.5
2014/15	12.4	4.8	59.9	0.1	8.0	36.5	52.0	5.5

**Sorghum Supply and Disappearance: Selected Exporters**  
**Million Metric Tons/Hectares**

Country Mktg Year	Area Harvested	Yield	Production	MY Imports	MY Exports	Feed and Residual	Total Consumption	Ending Stocks
<b>Argentina</b>								
2006/07	0.6	4.7	2.8	0.0	1.1	1.5	1.7	0.2
2007/08	0.6	4.7	2.9	0.0	1.2	1.0	1.2	0.7
2008/09	0.5	3.7	1.7	0.0	1.1	1.0	1.1	0.2
2009/10	0.8	4.8	3.6	0.0	1.8	1.7	1.9	0.2
2010/11	1.0	4.4	4.4	0.0	1.7	1.7	1.9	1.0
2011/12	1.0	4.2	4.2	0.0	3.1	1.7	1.9	0.2
2012/13	1.1	4.5	4.7	0.0	1.8	2.0	2.3	0.8
2013/14	1.0	4.4	4.4	0.0	1.3	2.3	2.7	1.2
2014/15	0.9	4.7	4.0	0.0	1.4	2.5	2.9	0.9
<b>Australia</b>								
2006/07	0.6	2.1	1.3	0.0	0.1	1.2	1.2	0.0
2007/08	0.9	4.0	3.8	0.0	0.8	2.2	2.2	0.8
2008/09	0.8	3.5	2.7	0.0	1.0	1.8	1.8	0.7
2009/10	0.5	3.0	1.5	0.0	0.3	1.2	1.2	0.7
2010/11	0.6	3.1	1.9	0.0	0.9	1.4	1.4	0.4
2011/12	0.7	3.4	2.2	0.0	1.3	1.1	1.1	0.2
2012/13	0.6	3.4	2.2	0.0	1.2	1.1	1.1	0.2
2013/14	0.5	2.2	1.1	0.0	0.4	0.8	0.8	0.1
2014/15	0.7	3.0	2.0	0.0	0.8	1.2	1.2	0.1



## U.S. Grains Supply and Distribution: Wheat, Corn, Sorghum, Barley, Oats, Rye, and Rice

Thousand Metric Tons/Hectares

	Area Harvested	Yield	Rough Production	Production	Imports	TY Imports	Exports	TY Exports	Feed Dom. Consumption	Domestic Consumption	Ending Stocks
<b>Wheat</b>											
2012/13	19,732	3	nr	61,298	3,341	3,442	27,544	27,734	10,066	37,768	19,538
2013/14	18,345	3	nr	58,105	4,588	4,767	32,012	31,497	6,142	34,154	16,065
2014/15	18,770	3	nr	55,129	4,354	4,200	24,494	25,000	4,082	32,250	18,804
<b>Corn</b>											
2012/13	35,356	8	nr	273,192	4,063	4,265	18,545	18,262	109,603	262,973	20,859
2013/14	35,390	10	nr	351,272	909	727	48,703	50,707	127,915	293,045	31,292
2014/15	33,644	11	nr	361,091	635	650	45,722	45,500	134,626	302,147	45,149
<b>Sorghum</b>											
2012/13	2,021	3	nr	6,293	243	243	1,938	2,136	2,377	4,796	385
2013/14	2,665	4	nr	9,966	2	3	5,380	5,843	2,331	4,109	864
2014/15	2,590	4	nr	10,988	8	7	7,620	7,500	2,794	3,556	684
<b>Barley</b>											
2012/13	1,325	4	nr	4,768	507	431	193	163	1,441	4,638	1,750
2013/14	1,230	4	nr	4,719	408	522	311	336	1,409	4,775	1,791
2014/15	989	4	nr	3,849	501	500	261	250	980	4,286	1,594
<b>Oats</b>											
2012/13	407	2	nr	892	1,601	1,341	20	18	1,640	2,743	527
2013/14	408	2	nr	938	1,676	1,861	23	28	1,671	2,759	359
2014/15	416	2	nr	1,011	1,724	1,700	29	30	1,506	2,623	442
<b>Rye</b>											
2012/13	101	2	nr	166	228	221	8	7	148	387	10
2013/14	113	2	nr	194	234	204	7	6	184	424	7
2014/15	104	2	nr	183	229	200	7	5	160	402	10
<b>Rice, Milled</b>											
2012/13	1,084	8	9,069	6,348	669	675	3,385	3,293	nr	3,779	1,156
2013/14	999	9	8,615	6,117	733	754	2,985	3,042	nr	3,996	1,025
2014/15	1,181	8	10,026	7,068	730	670	3,326	3,400	nr	4,190	1,307

Notes: Wheat Trade Year (TY) statistics are on July/June years. Barley, corn, sorghum, rye and oats Trade Year (TY) statistics are on Oct/Sept years. Rice Trade Year (TY) statistics are for the subsequent calendar year; 'Imports' and 'Exports' columns contain data on the local marketing year: wheat, barley, oats and rye are June/May; corn and sorghum are Sept/Aug; rice is Aug/July.

**Total Wheat and Coarse Grains: Supply and Demand**

Millions of Metric Tons/Hectares

	Area Harvested	Yield	Production	TY Exports	Feed Dom.	Domestic Consumption	Ending Stocks
<b>Wheat and Coarse Grains</b>							
1985/86	570.5	2.3	1,328.5	165.2	614.5	1,247.9	420.6
1986/87	565.2	2.4	1,347.9	174.7	645.6	1,299.4	469.2
1987/88	544.3	2.4	1,285.9	202.2	656.5	1,329.8	423.1
1988/89	541.9	2.2	1,218.1	203.3	619.4	1,302.0	339.3
1989/90	548.2	2.4	1,327.4	208.9	644.4	1,346.2	320.5
1990/91	545.7	2.6	1,417.7	190.1	668.7	1,369.5	368.7
1991/92	543.3	2.5	1,355.7	207.5	651.4	1,364.9	359.5
1992/93	545.7	2.6	1,431.6	205.2	663.0	1,389.1	399.2
1993/94	535.9	2.5	1,356.1	188.2	655.7	1,389.3	366.1
1994/95	534.0	2.6	1,392.5	200.1	668.9	1,395.8	362.7
1995/96	527.1	2.5	1,338.5	187.5	640.1	1,381.9	319.4
1996/97	546.0	2.7	1,490.3	198.3	672.9	1,442.6	367.1
1997/98	535.2	2.8	1,491.6	190.3	683.1	1,444.0	414.6
1998/99	520.3	2.8	1,481.8	198.7	682.8	1,448.2	448.2
1999/00	506.2	2.9	1,465.3	214.0	688.3	1,468.0	445.0
2000/01	509.4	2.8	1,447.3	205.0	698.4	1,472.4	419.9
2001/02	511.8	2.9	1,481.0	208.4	711.3	1,496.1	404.9
2002/03	502.6	2.9	1,444.4	209.3	709.2	1,506.1	343.1
2003/04	510.8	2.9	1,472.4	206.0	715.6	1,535.7	279.8
2004/05	514.1	3.2	1,642.6	214.5	753.8	1,585.5	336.8
2005/06	516.4	3.1	1,599.9	222.6	755.4	1,617.1	319.7
2006/07	516.9	3.1	1,584.9	230.0	746.6	1,629.9	274.7
2007/08	533.8	3.2	1,692.5	244.9	759.9	1,674.5	292.7
2008/09	538.9	3.3	1,792.3	253.6	771.7	1,723.5	361.5
2009/10	533.1	3.4	1,804.3	254.2	778.7	1,767.9	397.9
2010/11	522.7	3.3	1,748.5	250.2	770.2	1,783.0	363.5
2011/12	538.2	3.4	1,851.5	287.2	803.6	1,852.0	363.0
2012/13	532.2	3.4	1,794.8	279.2	805.7	1,815.5	342.3
2013/14	544.7	3.7	1,996.7	326.4	866.4	1,942.8	396.2
2014/15	540.8	3.7	1,999.8	314.6	902.7	1,979.2	416.8

Notes: Wheat and coarse grains trade data are on July/June years through 1975/76. From 1976/77 to the present, coarse grains data are on an Oct/Sept trade year.

## World Wheat and Coarse Grains: Supply and Demand

Millions of Metric Tons/Hectares

	Area Harvested	Yield	Production	TY Exports	Feed Dom.	Domestic Consumpti	Ending Stocks
<b>Wheat</b>							
1992/93	222.1	2.5	562.6	113.2	111.6	547.7	177.9
1993/94	221.0	2.5	558.5	101.7	109.6	553.0	183.4
1994/95	213.3	2.5	523.0	101.5	101.4	542.1	164.2
1995/96	216.7	2.5	537.5	99.2	95.2	546.1	155.7
1996/97	227.1	2.6	581.4	104.0	99.6	573.4	163.6
1997/98	226.4	2.7	610.2	104.5	103.6	576.4	197.5
1998/99	219.2	2.7	590.4	102.0	106.9	578.2	209.7
1999/00	212.5	2.8	586.8	111.9	102.7	585.2	211.3
2000/01	215.6	2.7	583.3	102.2	109.1	586.9	207.8
2001/02	214.5	2.7	583.8	108.0	109.7	586.3	205.2
2002/03	213.4	2.7	569.6	106.6	113.7	604.0	170.8
2003/04	207.6	2.7	555.3	103.6	99.6	589.3	136.8
2004/05	215.8	2.9	626.7	113.3	108.5	605.9	157.5
2005/06	217.6	2.8	618.9	114.2	115.5	621.7	154.7
2006/07	211.6	2.8	596.5	115.4	110.8	616.5	134.8
2007/08	217.1	2.8	612.7	116.2	102.5	617.7	129.7
2008/09	224.2	3.1	683.9	143.2	122.5	644.3	169.3
2009/10	225.5	3.0	686.8	135.4	121.0	654.2	201.9
2010/11	216.7	3.0	649.6	134.1	114.9	653.4	198.0
2011/12	220.7	3.2	695.8	153.8	146.6	697.0	196.8
2012/13	216.3	3.0	658.5	147.1	137.1	679.8	175.6
2013/14	220.9	3.2	716.1	162.1	130.6	704.2	187.5
2014/15	222.1	3.3	724.8	160.1	140.1	714.5	197.7
<b>Coarse Grains</b>							
1992/93	323.6	2.7	868.9	91.9	551.4	841.4	221.3
1993/94	314.9	2.5	797.7	86.5	546.1	836.3	182.7
1994/95	320.7	2.7	869.5	98.6	567.6	853.7	198.5
1995/96	310.3	2.6	801.0	88.3	544.9	835.8	163.7
1996/97	318.8	2.9	908.9	94.3	573.3	869.2	203.4
1997/98	308.8	2.9	881.3	85.8	579.5	867.7	217.1
1998/99	301.1	3.0	891.3	96.7	575.9	870.0	238.5
1999/00	293.7	3.0	878.5	102.1	585.5	882.8	233.6
2000/01	293.8	2.9	864.0	102.8	589.3	885.5	212.2
2001/02	297.4	3.0	897.2	100.4	601.6	909.7	199.6
2002/03	289.1	3.0	874.8	102.7	595.5	902.1	172.3
2003/04	303.1	3.0	917.1	102.3	616.0	946.4	143.0
2004/05	298.3	3.4	1,015.9	101.2	645.4	979.6	179.3
2005/06	298.7	3.3	981.1	108.4	639.9	995.4	165.0
2006/07	305.3	3.2	988.4	114.5	635.8	1,013.5	139.9
2007/08	316.7	3.4	1,079.9	128.7	657.4	1,056.8	163.0
2008/09	314.7	3.5	1,108.4	110.4	649.1	1,079.3	192.2
2009/10	307.6	3.6	1,117.5	118.8	657.7	1,113.7	196.0
2010/11	306.1	3.6	1,099.0	116.0	655.3	1,129.6	165.4
2011/12	317.5	3.6	1,155.7	133.4	657.0	1,155.0	166.1
2012/13	315.9	3.6	1,136.3	132.2	668.6	1,135.7	166.7
2013/14	323.9	4.0	1,280.6	164.3	735.8	1,238.6	208.7
2014/15	318.6	4.0	1,275.0	154.5	762.6	1,264.7	219.1

Notes: Wheat and coarse grains trade data are on July/June years through 1975/76. From 1976/77 to the present, coarse grains data are on an Oct/Sept trade year.

## World Corn and Barley: Supply and Demand

Millions of Metric Tons/Hectares

	Area Harvested	Yield	Production	TY Exports	Feed Dom.	Domestic Consumption	Ending Stocks
<b>Corn</b>							
1992/93	133.1	4.0	535.6	62.6	348.7	512.1	162.7
1993/94	130.7	3.6	475.8	57.4	342.0	509.0	129.4
1994/95	135.2	4.1	559.3	71.9	371.6	535.4	153.3
1995/96	135.0	3.8	516.4	64.8	365.3	536.4	133.3
1996/97	141.5	4.2	592.8	66.6	387.9	559.8	166.3
1997/98	136.3	4.2	574.4	63.1	400.6	573.5	167.2
1998/99	138.9	4.4	605.8	68.7	404.3	581.6	191.4
1999/00	139.0	4.4	608.4	72.0	422.5	605.4	194.4
2000/01	137.1	4.3	591.8	75.9	427.4	610.9	175.3
2001/02	137.3	4.4	601.8	72.7	436.4	625.6	151.5
2002/03	137.4	4.4	603.9	76.8	433.4	628.6	126.8
2003/04	141.7	4.4	627.4	79.0	445.7	649.7	104.6
2004/05	145.4	4.9	716.8	76.0	475.8	690.3	131.1
2005/06	145.4	4.8	700.7	82.5	478.9	708.3	123.5
2006/07	150.3	4.8	716.6	91.3	479.5	730.7	109.4
2007/08	160.4	5.0	795.5	98.2	499.1	775.0	129.9
2008/09	158.7	5.0	799.7	83.6	481.3	784.3	145.3
2009/10	158.5	5.2	824.9	92.7	490.5	826.1	144.2
2010/11	164.6	5.1	835.4	91.7	501.9	852.0	127.6
2011/12	172.1	5.2	888.2	103.7	506.4	883.6	132.1
2012/13	177.6	4.9	868.0	100.5	517.7	864.5	135.7
2013/14	180.6	5.5	989.6	129.7	573.1	953.1	172.1
2014/15	178.2	5.6	989.7	117.8	597.2	976.5	185.3
<b>Barley</b>							
1992/93	72.6	2.3	166.3	16.4	119.0	165.6	35.0
1993/94	73.2	2.3	169.0	18.8	123.8	169.1	34.9
1994/95	72.2	2.2	160.7	15.3	120.9	165.6	30.0
1995/96	66.4	2.1	141.2	13.4	107.8	150.7	20.5
1996/97	64.3	2.4	153.2	17.9	106.3	149.5	24.1
1997/98	63.8	2.4	153.9	12.8	104.1	145.8	32.2
1998/99	56.6	2.4	136.0	17.8	99.5	139.3	29.0
1999/00	52.1	2.4	127.4	17.8	94.0	132.5	23.9
2000/01	52.9	2.5	133.0	16.3	94.6	134.3	22.6
2001/02	55.7	2.6	143.4	17.2	95.5	136.8	29.2
2002/03	54.8	2.4	134.2	16.3	94.7	135.8	27.5
2003/04	58.4	2.4	142.7	14.8	103.1	146.8	23.5
2004/05	57.5	2.6	152.1	17.0	100.0	142.5	33.1
2005/06	55.3	2.5	136.2	17.4	97.4	141.0	28.3
2006/07	56.4	2.4	137.0	14.6	98.5	143.8	21.5
2007/08	55.9	2.4	133.0	18.5	91.1	134.0	20.6
2008/09	55.2	2.8	155.1	18.2	100.4	144.1	31.6
2009/10	54.4	2.8	151.1	17.3	101.4	145.3	37.4
2010/11	47.2	2.6	123.2	15.2	91.3	136.3	24.3
2011/12	49.4	2.7	133.5	21.4	91.7	135.2	22.6
2012/13	50.2	2.6	129.8	22.1	89.0	131.7	20.8
2013/14	50.7	2.9	145.5	23.9	97.1	141.3	24.9
2014/15	49.8	2.8	140.7	23.6	95.9	142.3	23.4

Notes: Coarse grains trade data are on July/June years through 1975/76. From 1976/77 to the present, coarse grains data are on an Oct/Sept trade year.

**World Rice: Supply and Demand**

Millions of Metric Tons/Hectares

	Area Harvested	Yield	Rough Production	Production	TY Exports	Domestic Consumption	Ending Stocks
<b>Rice, Milled</b>							
1985/86	144.7	3.2	467.3	318.0	11.8	308.0	97.7
1986/87	144.8	3.2	464.6	316.1	12.9	310.4	103.3
1987/88	141.4	3.3	464.8	315.1	11.4	313.1	105.3
1988/89	146.6	3.3	490.8	332.1	14.0	325.7	111.7
1989/90	147.8	3.5	510.3	345.2	11.7	336.3	120.6
1990/91	147.0	3.5	519.4	351.4	12.3	345.3	126.7
1991/92	147.5	3.5	522.8	353.2	14.4	353.2	126.7
1992/93	146.5	3.6	524.2	354.0	14.9	357.5	123.2
1993/94	145.3	3.6	526.1	354.7	16.6	358.9	119.0
1994/95	147.3	3.7	539.9	364.1	20.8	365.5	117.6
1995/96	148.4	3.7	547.3	368.8	19.7	368.3	118.1
1996/97	150.1	3.8	565.3	381.4	18.9	379.2	120.3
1997/98	151.7	3.8	575.2	387.4	27.6	380.0	127.7
1998/99	153.1	3.8	587.0	394.9	24.8	388.6	134.0
1999/00	155.9	3.9	608.6	409.2	22.8	400.1	143.1
2000/01	152.4	3.9	594.1	399.3	24.3	395.6	146.7
2001/02	151.3	3.9	594.3	399.5	27.7	413.3	132.9
2002/03	146.9	3.8	563.1	378.2	27.6	408.1	103.0
2003/04	149.3	3.9	585.1	392.3	27.3	413.7	81.6
2004/05	151.8	3.9	596.6	400.9	29.0	408.6	73.9
2005/06	154.0	4.0	622.3	417.9	29.1	415.5	76.3
2006/07	154.6	4.0	625.6	420.5	31.9	421.6	75.2
2007/08	154.7	4.2	642.5	432.9	29.6	427.3	80.8
2008/09	158.1	4.2	668.3	449.1	29.4	437.6	92.4
2009/10	155.8	4.2	656.6	440.9	31.8	438.7	94.6
2010/11	158.2	4.2	671.4	450.0	36.6	445.0	99.6
2011/12	160.3	4.3	696.3	467.0	39.9	459.8	106.8
2012/13	158.2	4.4	703.8	472.0	39.5	468.7	110.1
2013/14	160.9	4.4	711.4	477.1	43.2	480.8	106.5
2014/15	159.6	4.4	707.9	474.9	42.6	483.7	97.6

Notes: Stocks, exports and consumption are expressed on a milled basis in marketing years.

---

## **ENDNOTES TO GRAIN: WORLD MARKETS AND TRADE**

### **REGIONAL TABLES**

**North America:** Canada, Mexico, the United States.

**Central America:** Belize, Costa Rica, El Salvador, Guatemala, Honduras, Nicaragua, Panama.

**Caribbean:** Anguilla, Antigua and Barbuda, Aruba, Bahamas, Barbados, Bermuda, British Virgin Islands, Cayman Islands, Cuba, Dominica, Dominican Republic, French West Indies, Grenada, Guadeloupe, Haiti, Jamaica and Dep, Leeward-Windward Islands, Martinique, Montserrat, Netherlands Antilles, Puerto Rico, Kitts and Nevis, St. Lucia, St. Vincent and the Grenadines, Trinidad and Tobago, Turks and Caicos Islands, Virgin Islands of the U.S.

**South America:** Argentina, Bolivia, Brazil, Chile, Colombia, Ecuador, Falkland Islands (Islas Malvinas), French Guiana, Guyana, Paraguay, Peru, Suriname, Uruguay, Venezuela.

**EU:** Austria, Belgium/Luxembourg, Bulgaria, Croatia, Cyprus, Czech Republic, Denmark, Estonia, Finland, France, Germany, Greece, Hungary, Ireland, Italy, Latvia, Lithuania, Malta, Netherlands, Poland, Portugal, Romania, Slovakia, Slovenia, Spain, Sweden, United Kingdom.

**Other Europe:** Albania, Azores, Bosnia and Herzegovina, Former Yugoslavia, Gibraltar, Iceland, Macedonia, Montenegro, Norway, Serbia, Switzerland.

**Former Soviet Union:** Armenia, Azerbaijan, Belarus, Georgia, Kazakhstan, Kyrgyzstan, Moldova, Russia, Tajikistan, Turkmenistan, Ukraine, Uzbekistan.

**Middle East:** Bahrain, Iran, Iraq, Israel, Jordan, Kuwait, Lebanon, Oman, Qatar, Saudi Arabia, Syria, Turkey, United Arab Emirates, Yemen.

**North Africa:** Algeria, Egypt, Libya, Morocco, Tunisia.

**Sub-Saharan Africa:** all African countries except North Africa.

**East Asia:** China, Hong Kong, Japan, South Korea, North Korea, Macau, Mongolia, Taiwan.

**South Asia:** Afghanistan, Bangladesh, Bhutan, India, Nepal, Pakistan, Sri Lanka, Maldives.

**Southeast Asia:** Brunei, Burma, Cambodia, Indonesia, Laos, Malaysia, Philippines, Singapore, Thailand, Vietnam.

**Oceania:** Australia, Fiji, New Zealand, Papua New Guinea.

---

## **OTHER NOTES**

**Local Marketing Years (LMY):** LMY refers to the 12-month period at the onset of the main harvest, when the crop is marketed (i.e., consumed, traded, or stored). The year first listed begins a country's LMY for that commodity (2014/15 starts in 2014); except for summer grains in certain Southern Hemisphere countries and for rice in selected countries, where the second year begins the LMY (2014/15 starts in 2015). Key exporter LMY's are:

<b>Wheat</b>	<b>Corn</b>	<b>Barley</b>	<b>Sorghum</b>
Argentina (Dec/Nov)	Argentina (Mar/Feb)	Australia (Nov/Oct)	Argentina (Mar/Feb)
Australia (Oct/Sep)	Brazil (Mar/Feb)	Canada (Aug/Jul)	Australia (Mar/Feb)
Canada (Aug/Jul)	China (Oct/Sep)	European Union (Jul/Jun)	United States (Sep/Aug)
China (Jul/Jun)	South Africa (May/Apr)	Russia (Jul/Jun)	
European Union (Jul/Jun)	United States (Sep/Aug)	Ukraine (Jul/Jun)	
India (Apr/Mar)		United States (Jun/May)	
Kazakhstan (Jul/Jun)			
Russia (Jul/Jun)			
Turkey (Jun/May)			
Ukraine (Jul/Jun)			
United States (Jun/May)			

For a complete list of local marketing years, please see the FAS website (<http://www.fas.usda.gov/psdonline/psdAvailability.aspx>).

**Stocks:** Unless otherwise stated, stock data are based on an aggregate of differing local marketing years and should not be construed as representing world stock levels at a fixed point in time.

**Consumption:** World totals for consumption reflect total utilization, including food, seed, industrial, feed, and waste; as well as differences in local marketing year imports and local marketing year exports. Consumption statistics for regions and individual countries, however, reflect food, seed, industrial, feed, and waste only.

**Trade:** All PSD tables are balanced on the different local marketing years. All trade tables contain Trade Year (TY) data which puts all countries on a uniform, 12-month period for analytical comparisons: wheat is July/June; coarse grains, corn, barley, sorghum, oats, and rye are Oct/Sept; and rice is calendar year.

**EU Consolidation:** The trade figures starting from 1999/00 represent the European Union (Croatia plus the former EU-27) and exclude all intra-trade. For the years 1960/61 through 1998/99, figures are the EU-15 and also exclude all intra-trade. EU-15 member states' data for grains are no longer maintained in the official USDA database. Data for the individual NMS-10, plus Bulgaria, Romania, and Croatia, exists only prior to 1999/00.

**Statistics:** (1) Wheat trade statistics include wheat, flour, and selected pasta products on a grain equivalent basis. (2) Rice trade statistics include rough, brown, milled, and broken on a milled equivalent basis. (3) Coarse grains statistics include corn, barley, sorghum, oats, rye, millet, and mixed grains but exclude trade in barley malt, millet, and mixed grains.

---

**Unaccounted:** This term includes grain in transit, reporting discrepancies in some countries, and trade to countries outside the USDA database.

The Global Commodity Analysis Division, Office of Global Analysis, Foreign Agricultural Service, USDA, Washington, DC 20250, prepared this circular. Information is gathered from official statistics of foreign governments and other foreign source materials, reports of U.S. agricultural attachés and Foreign Service officers, office research, and related information. Further information may be obtained by writing the Division or telephoning (202) 720-3448.

**Note:** The previous report in this series was Grain: World Markets and Trade February 2015. For further details on world grain production, please see World Agricultural Production March 2015.

This circular is available in its entirety on the Internet via the Foreign Agricultural Service Home Page. The address is: <http://www.fas.usda.gov>

Questions may be directed to the following staff:

Teresa McKeivier	(202) 690-1151	<a href="mailto:Teresa.McKeivier@fas.usda.gov">Teresa.McKeivier@fas.usda.gov</a>	Wheat
Andrew Sowell	(202) 720-0262	<a href="mailto:Andrew.Sowell@fas.usda.gov">Andrew.Sowell@fas.usda.gov</a>	Wheat
Yoonhee Macke	(202) 690-4199	<a href="mailto:Yoonhee.Macke@fas.usda.gov">Yoonhee.Macke@fas.usda.gov</a>	Rice
Rick O'Meara	(202) 720-4933	<a href="mailto:Richard.Omeara@fas.usda.gov">Richard.Omeara@fas.usda.gov</a>	Coarse Grains
Lisa Bennett	(202) 720-0929	<a href="mailto:Lisa.Bennett@fas.usda.gov">Lisa.Bennett@fas.usda.gov</a>	Coarse Grains