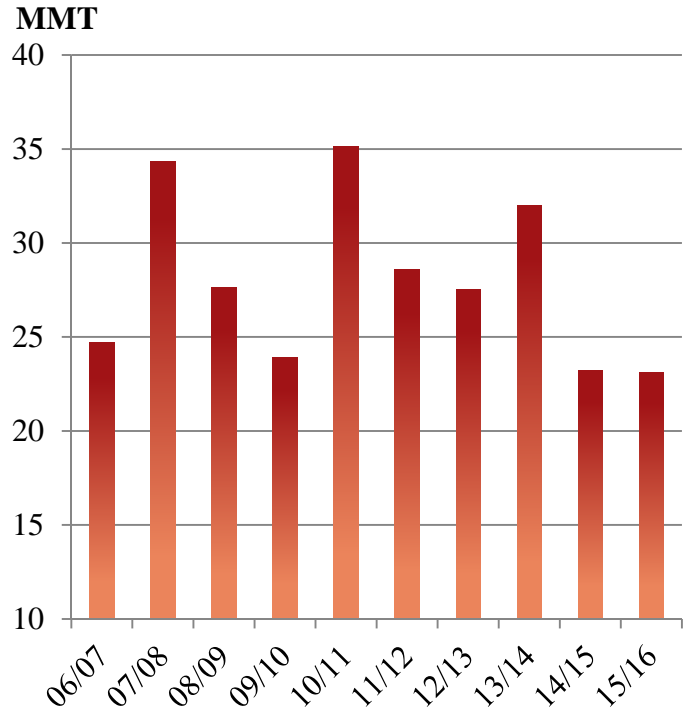
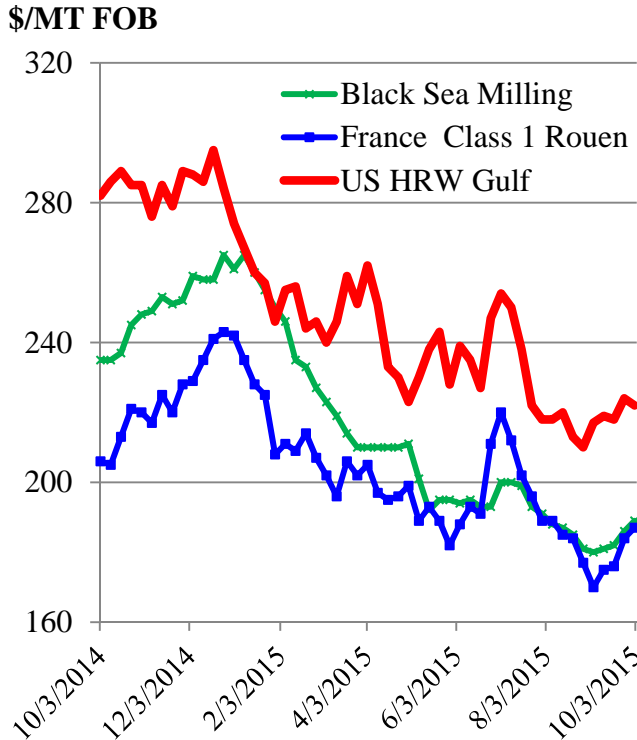




# Grain: World Markets and Trade

October 2015

## High U.S. Wheat Prices Drive Exports to 44-Year Low



U.S. 2015/16 marketing year exports (June-May) are forecast to drop to the lowest level since 1971/72 because of high relative prices, abundant competitor supplies, and a strong U.S. dollar. International prices are being pressured downward by projected record global production and ample exportable supplies in Australia, Canada, EU, Kazakhstan, Russia, and Ukraine. Although U.S. wheat export prices have fallen, the United States remains largely uncompetitive, even in some traditional markets. Currently, U.S. FOB prices are about \$35/MT above both French and Black Sea.

Russian and Ukrainian exports are forecast at record levels. EU exports are projected to be the second highest on record. EU and Black Sea exports have displaced the United States as the primary supplier in many major importing countries in North Africa and the Middle East based on low prices as well as freight and logistical advantages. Furthermore, the United States has recently lost market share in some traditional markets and the trend is expected to continue. For example, Mexico has recently begun importing from France, Russia, and Ukraine. Compared to last year, U.S. export commitments to Mexico are down 27%. Additionally, U.S. market share in Nigeria declined from a five-year average of 76% to 43% last year as lower-priced Russian and EU supplies entered the market. U.S. export commitments to Nigeria are down 38% from last year, further dimming prospects for market share recovery.

For email subscription, click here to register:  
<http://www.fas.usda.gov/data/grain-world-markets-and-trade>

---

## **TABLE OF CONTENTS**

<b>World Markets and Trade: Commentary and Current Data</b>	
Wheat .....	4
Rice .....	9
Coarse Grains.....	14
<b>Historical Data Series for Selected Regions and Countries .....</b>	<b>35</b>
<b>Endnotes to Grain: World Markets and Trade .....</b>	<b>54</b>

The Foreign Agricultural Service (FAS) updates its production, supply and distribution (PSD) database for cotton, oilseeds, and grains at 12:00 p.m. on the day the *World Agricultural Supply and Demand Estimates* (WASDE) report is released. This circular is released by 12:15 p.m.

**To download the tables in the publication**, go to Production, Supply and Distribution Database (PSD Online): (<http://apps.fas.usda.gov/psdonline/psdHome.aspx>), scroll down to Reports, and Click the plus sign [+] next to Grains.

### **FAS Reports and Databases:**

Current *World Markets and Trade* and *World Agricultural Production* Reports:

<http://apps.fas.usda.gov/psdonline/psdDataPublications.aspx>

Archives *World Markets and Trade* and *World Agricultural Production* Reports:

<http://usda.mannlib.cornell.edu/MannUsda/viewTaxonomy.do?taxonomyID=7>

Production, Supply and Distribution Database (PSD Online):

<http://apps.fas.usda.gov/psdonline/psdHome.aspx>

Global Agricultural Trade System (U.S. Exports and Imports):

<http://apps.fas.usda.gov/gats/default.aspx>

Export Sales Report:

<http://apps.fas.usda.gov/esrquery/>

Global Agricultural Information Network (Agricultural Attaché Reports):

<http://gain.fas.usda.gov/Pages/Default.aspx>

### **Other USDA Reports:**

World Agricultural Supply and Demand Estimates (WASDE):

<http://www.usda.gov/oce/commodity/wasde/>

Economic Research Service:

<http://www.ers.usda.gov/topics/crops>

National Agricultural Statistics Service:

<http://www.nass.usda.gov/Publications/>

**All Grain Summary Comparison**  
**Million Metric Tons**

Marketing Year	Wheat			Rice, Milled			Corn			
	2013/14	2014/15	2015/16	2013/14	2014/15	2015/16	2013/14	2014/15	2015/16	
<b>Production</b>										
United States	(Jun-May)	58.1	55.1	55.8	6.1	7.1	6.0	351.3	361.1	344.3
Other		657.0	670.4	677.0	472.3	471.7	468.0	640.1	647.6	628.3
<b>World Total</b>		715.1	725.5	732.8	478.4	478.8	474.0	991.4	1,008.7	972.6
<b>Domestic Consumption</b>										
United States	(Jun-May)	34.3	31.5	33.2	4.0	4.1	4.0	293.0	301.9	302.4
Other		656.7	670.1	680.4	474.2	478.4	481.5	653.3	674.8	679.8
<b>World Total</b>		691.0	701.6	713.6	478.2	482.5	485.5	946.3	976.7	982.2
<b>Ending Stocks</b>										
United States	(Jun-May)	16.1	20.5	23.4	1.0	1.6	1.3	31.3	44.0	39.7
Other		177.7	191.6	205.1	106.6	100.2	87.0	144.6	152.0	148.1
<b>World Total</b>		193.8	212.1	228.5	107.6	101.8	88.3	175.9	196.0	187.8
<b>TY Imports</b>										
United States	(Jun-May)	4.8	4.0	3.4	0.8	0.8	0.8	0.7	0.8	0.8
Other		155.4	154.3	154.9	40.2	39.3	39.1	124.4	120.0	122.6
<b>World Total</b>		160.2	158.3	158.3	41.0	40.1	39.9	125.1	120.8	123.4
<b>TY Exports</b>										
United States	(Jun-May)	31.5	22.8	23.0	3.0	3.4	3.3	50.7	46.8	47.0
Other		130.9	138.5	137.5	40.3	39.1	38.7	79.5	80.3	80.7
<b>World Total</b>		162.4	161.3	160.5	43.3	42.5	42.0	130.2	127.1	127.7

Note: Consumption in this table has not been adjusted for differences in marketing year imports and exports and therefore differs from global totals shown elsewhere. Marketing years for U.S. grains are: Wheat (Jun-May), Rice (Aug-Jul), Corn (Sep-Aug). 'Marketing Year' column is germane for U.S. wheat only.

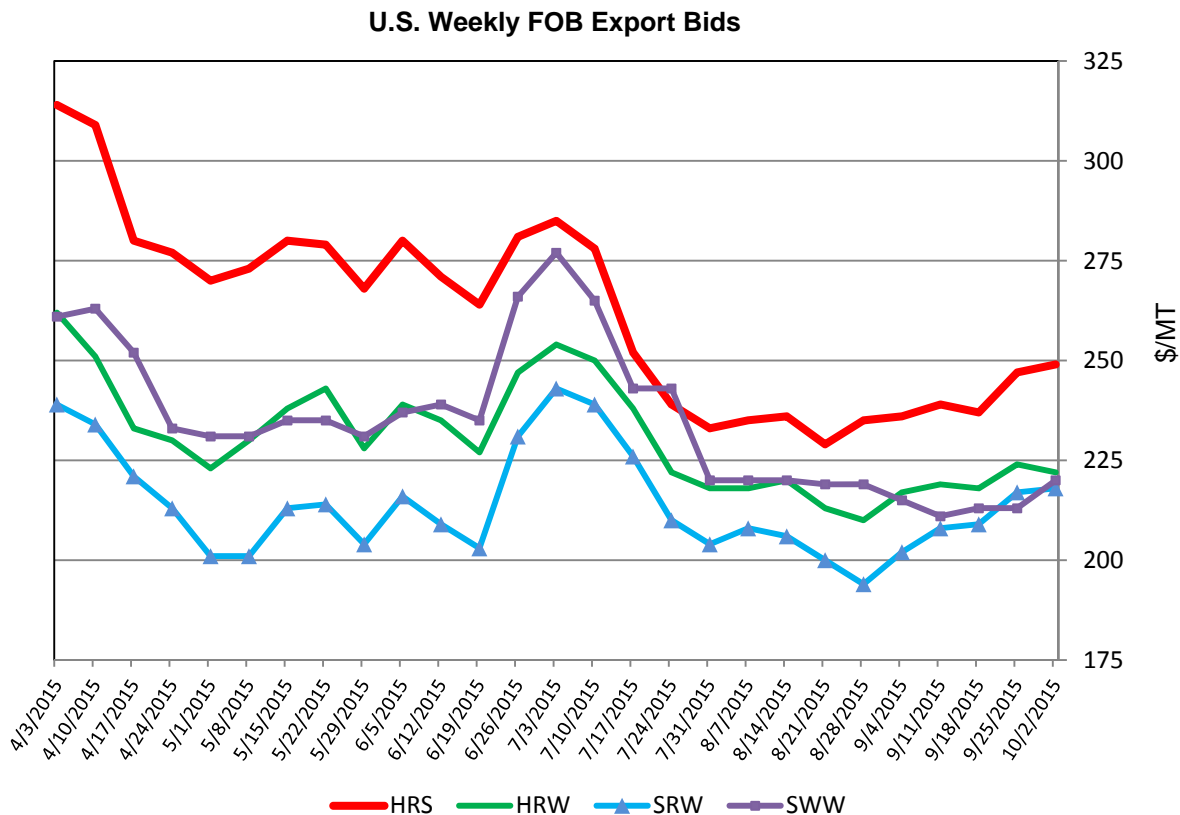
---

## WHEAT: WORLD MARKETS AND TRADE

### OVERVIEW

Global production in 2015/16 is raised to a new record driven by larger crops in Australia, Canada, the EU, and Ukraine, and despite smaller production in the United States and Argentina. Global trade is raised, primarily with imports for China, Iran, and Syria, more than offsetting a cut in Brazil. Exports are up for Australia, Canada, the EU, Kazakhstan, Russia, and Ukraine, but cut for Argentina and the United States. Marketing year U.S. exports are projected at a 44-year low. The season-average farm price forecast is unchanged from last month with a large share of 2015/16 production already marketed during the summer months.

### U.S. PRICES:



**Domestic:** Prices for all U.S. wheat classes rose in the last month, making exports less competitive. Concerns over dry planting conditions in the U.S. and Black Sea, along with a lower U.S. production estimate, are putting upward pressure on prices. Hard Red Spring (HRS) rose \$13/ton to \$249, while Hard Red Winter (HRW) edged just \$7/ton higher to \$222. Soft Red Winter (SRW) climbed \$16/ton higher to \$218 while Soft White Wheat (SWW) saw the weakest price performance, rising just \$5/ton to \$220.

---

## **TRADE CHANGES IN 2015/16**

### **Selected Exporters**

- **Argentina** is down 500,000 tons to 5.5 million based on a smaller forecast crop.
- **Australia** is boosted 500,000 tons to 18.5 million on a larger forecast crop.
- **Canada** is raised 1.0 million tons to 19.5 million on higher production.
- **European Union** is up 500,000 tons to 33.0 million on expectations that large supplies and competitive prices will boost exports in the second half of the season.
- **Kazakhstan** is raised 500,000 tons to 6.5 million on larger exportable supplies.
- **Russia** is up 500,000 tons to 23.5 million on a faster pace of trade to date.
- **Ukraine** is hiked 1.5 million tons to a record 15.0 million on higher production and a faster pace of trade to date.
- **United States** is down 2.0 million tons to 23.0 million based on weak shipments and slow sales. The marketing year estimate of 23.1 million tons is projected at a 44-year low.

### **Selected Importers**

- **Brazil** is down 300,000 tons to 6.7 million based on currency weakness and lower consumption.
- **China** is up 300,000 tons to 2.5 million on a higher-than-expected pace of imports to date.
- **Iran** is hiked 2.0 million tons to 4.5 million because the government unexpectedly eliminated import duties that it implemented just two months ago.
- **Syria** doubled to 1.0 million on reports of difficulty accessing domestic stocks.

**World Wheat, Flour, and Products Trade**  
**July/June Year, Thousand Metric Tons**

	2011/12	2012/13	2013/14	2014/15	2015/16 Sep	2015/16 Oct
<b>TY Exports</b>						
Argentina	11,951	7,450	1,675	4,200	6,000	5,500
Australia	23,031	21,269	18,339	16,575	18,000	18,500
Canada	17,603	18,584	22,157	24,830	18,500	19,500
European Union	16,728	22,786	32,033	35,396	32,500	33,000
Kazakhstan	11,069	6,801	8,000	5,501	6,000	6,500
Mexico	790	729	1,322	1,104	1,100	1,100
Russia	21,627	11,289	18,568	22,800	23,000	23,500
Turkey	3,678	3,583	4,293	4,136	4,000	4,000
Ukraine	5,436	7,190	9,755	11,269	13,500	15,000
Uruguay	1,782	811	1,345	878	1,100	1,100
Others	11,928	18,982	13,371	11,895	9,682	9,792
<b>Subtotal</b>	125,623	119,474	130,858	138,584	133,382	137,492
<b>United States</b>	28,142	27,734	31,518	22,752	25,000	23,000
<b>World Total</b>	153,765	147,208	162,376	161,336	158,382	160,492
<b>TY Imports</b>						
Afghanistan	2,200	1,600	2,050	2,000	2,000	2,000
Algeria	6,500	6,484	7,484	7,257	7,700	7,700
Bangladesh	2,039	2,725	3,354	3,797	3,600	3,600
Brazil	7,053	7,547	7,061	5,869	7,000	6,700
China	2,933	2,960	6,773	1,926	2,200	2,500
Egypt	11,650	8,300	10,170	11,063	11,500	11,500
European Union	7,362	5,276	3,974	5,973	6,000	6,000
Indonesia	6,457	7,146	7,392	7,478	7,800	7,800
Iran	2,400	5,600	6,600	5,006	2,500	4,500
Iraq	3,784	3,948	3,246	2,253	3,200	3,200
Japan	6,354	6,598	6,123	5,878	5,800	5,800
Korea, South	5,188	5,439	4,288	3,942	4,200	4,200
Mexico	5,020	3,823	4,636	4,446	4,400	4,400
Morocco	3,671	3,825	3,892	4,073	2,800	2,800
Nigeria	3,903	4,138	4,580	4,244	4,400	4,400
Peru	1,585	1,683	2,078	1,907	1,800	1,800
Philippines	4,075	3,645	3,482	5,099	4,800	4,800
Saudi Arabia	2,904	1,921	3,429	3,487	3,800	3,800
Sudan	2,360	1,793	2,664	2,632	2,800	2,800
Thailand	2,646	1,845	1,693	3,489	2,600	2,800
Tunisia	1,473	1,523	1,634	1,461	2,000	2,000
Turkey	4,413	3,312	4,154	5,960	3,800	3,800
Uzbekistan	2,698	1,863	2,224	2,230	2,200	2,200
Vietnam	2,711	1,671	2,158	2,296	2,400	2,400
Yemen	2,685	3,149	3,425	3,245	3,300	3,300
Others	44,807	43,469	46,860	47,329	47,686	48,111
<b>Subtotal</b>	148,871	141,283	155,424	154,340	152,286	154,911
<b>Unaccounted</b>	1,857	2,449	2,167	3,009	2,746	2,231
<b>United States</b>	3,037	3,476	4,785	3,987	3,350	3,350
<b>World Total</b>	153,765	147,208	162,376	161,336	158,382	160,492

TY=Trade Year, see Endnotes.

**World Wheat Production, Consumption, and Stocks**  
**Local Marketing Years, Thousand Metric Tons**

	2011/12	2012/13	2013/14	2014/15	2015/16 Sep	2015/16 Oct
<b>Production</b>						
Argentina	15,500	9,300	10,500	12,500	11,000	10,500
Australia	29,905	22,856	25,303	23,666	26,000	27,000
Canada	25,288	27,205	37,530	29,420	25,000	26,000
China	117,400	121,023	121,930	126,170	130,000	130,000
Egypt	8,400	8,500	8,250	8,300	8,360	8,360
European Union	138,182	133,949	144,415	156,523	154,130	155,263
India	86,870	94,880	93,510	95,850	88,940	88,940
Iran	12,400	13,800	14,500	13,000	14,000	14,000
Kazakhstan	22,732	9,841	13,941	12,996	14,000	14,000
Morocco	5,800	3,870	7,000	5,100	8,000	8,000
Pakistan	25,000	23,300	24,000	25,500	25,000	25,000
Russia	56,240	37,720	52,091	59,080	61,000	61,000
Turkey	18,800	16,000	18,750	15,250	19,500	19,500
Ukraine	22,324	15,761	22,278	24,750	26,500	27,000
Uzbekistan	6,300	6,700	6,800	7,150	7,200	7,200
Others	50,668	52,697	56,209	55,092	54,846	55,183
<b>Subtotal</b>	641,809	597,402	657,007	670,347	673,476	676,946
<b>United States</b>	54,244	61,298	58,105	55,147	58,133	55,840
<b>World Total</b>	696,053	658,700	715,112	725,494	731,609	732,786
<b>Total Consumption</b>						
Algeria	8,950	9,450	9,850	10,050	10,250	10,250
Brazil	11,200	10,900	11,400	10,700	11,500	11,200
Canada	9,852	9,530	9,407	9,115	9,000	9,000
China	122,500	125,000	116,500	118,000	116,500	116,500
Egypt	18,600	18,700	18,500	19,100	19,600	19,600
European Union	127,234	119,250	117,200	123,900	125,850	125,850
India	81,404	83,822	93,852	93,130	94,740	94,540
Indonesia	6,250	6,950	7,165	7,365	7,650	7,650
Iran	15,200	16,000	17,000	17,500	18,000	18,000
Morocco	8,800	8,300	9,000	9,000	9,800	9,800
Pakistan	23,100	23,900	24,100	24,500	24,600	24,600
Russia	38,000	33,550	34,100	35,500	37,000	37,000
Turkey	18,100	17,650	17,750	17,500	18,000	18,000
Ukraine	14,950	11,400	11,500	12,000	12,700	12,700
Uzbekistan	7,800	8,000	8,400	8,900	9,100	9,100
Others	145,443	146,981	150,945	153,826	157,012	156,670
<b>Subtotal</b>	665,556	641,440	664,213	675,625	682,640	683,232
<b>United States</b>	31,962	37,768	34,287	31,530	33,719	33,177
<b>World Total</b>	697,518	679,208	698,500	707,155	716,359	716,409
<b>Ending Stocks</b>						
Australia	7,051	4,663	4,557	4,178	4,503	5,003
Canada	5,932	5,137	10,436	7,108	5,593	5,593
China	55,946	53,960	65,274	74,567	89,267	89,567
European Union	13,522	10,711	9,867	13,067	14,780	15,480
India	19,950	24,200	17,830	17,200	11,900	11,900
Iran	825	5,086	7,221	7,821	6,321	7,321
Russia	10,899	4,952	5,175	6,282	7,634	7,132
Others	63,332	48,913	57,347	61,387	62,753	63,059
<b>Subtotal</b>	177,457	157,622	177,707	191,610	202,751	205,055
<b>United States</b>	20,211	19,538	16,065	20,501	23,805	23,433
<b>World Total</b>	197,668	177,160	193,772	212,111	226,556	228,488

## Regional Wheat Imports, Production, Consumption, and Stocks

Thousand Metric Tons

	2011/12	2012/13	2013/14	2014/15	Sep 2015/16	Oct 2015/16
<b>TY Imports</b>						
North America	8,554	7,784	9,862	8,923	8,235	8,235
Central America	1,666	1,654	1,833	1,837	1,795	1,795
South America	13,779	14,422	14,831	13,181	14,265	13,965
European Union - 28	7,362	5,276	3,974	5,973	6,000	6,000
Other Europe	1,930	1,703	1,921	1,748	1,895	1,895
Former Soviet Union - 12	8,022	7,228	7,411	7,667	7,090	7,090
Middle East	23,066	24,163	28,341	26,928	23,600	26,000
North Africa	24,855	22,078	25,229	25,180	25,600	25,600
Sub-Saharan Africa	19,176	18,501	20,443	20,945	21,675	21,680
East Asia	16,865	17,352	19,463	14,120	14,610	14,910
South Asia	5,487	5,308	6,733	8,029	7,751	7,751
Southeast Asia	18,019	16,325	17,119	20,595	19,915	20,125
Others	3,127	2,965	3,049	3,201	3,205	3,215
<b>Total</b>	<b>151,908</b>	<b>144,759</b>	<b>160,209</b>	<b>158,327</b>	<b>155,636</b>	<b>158,261</b>
<b>Production</b>						
North America	83,160	91,734	99,012	88,254	86,833	85,540
South America	25,766	18,604	19,881	22,927	21,861	21,361
European Union - 28	138,182	133,949	144,415	156,523	154,130	155,263
Other Europe	3,597	3,431	4,059	3,856	4,132	4,132
Former Soviet Union - 12	114,985	77,802	103,873	112,726	117,030	117,530
Middle East	39,285	36,884	41,722	35,117	40,855	40,855
North Africa	18,366	17,320	19,722	16,900	19,560	20,260
Sub-Saharan Africa	6,231	6,718	7,518	7,721	7,369	7,006
East Asia	118,775	122,490	123,248	127,607	131,178	131,178
South Asia	117,232	126,237	125,710	129,595	122,060	122,060
Oceania	30,288	23,345	25,751	24,067	26,400	27,400
Others	186	186	201	201	201	201
<b>Total</b>	<b>696,053</b>	<b>658,700</b>	<b>715,112</b>	<b>725,494</b>	<b>731,609</b>	<b>732,786</b>
<b>Domestic Consumption</b>						
North America	49,414	53,923	50,344	47,495	49,719	49,177
South America	26,085	26,407	27,251	27,032	27,689	27,389
European Union - 28	127,234	119,250	117,200	123,900	125,850	125,850
Other Europe	4,871	4,721	4,757	4,810	4,890	4,890
Former Soviet Union - 12	79,980	71,725	72,940	75,840	78,125	78,125
Middle East	56,723	56,636	58,667	58,220	60,160	60,060
North Africa	40,927	41,421	42,424	42,676	44,325	44,325
Sub-Saharan Africa	23,260	23,994	26,659	27,149	28,462	28,020
East Asia	137,057	140,072	130,321	130,787	129,251	129,251
South Asia	115,926	121,005	132,045	132,253	134,726	134,526
Southeast Asia	16,665	16,520	16,574	19,030	19,530	19,730
Oceania	7,824	8,111	8,280	8,869	8,700	8,700
Others	3,379	3,366	3,494	3,555	3,594	3,594
<b>Total</b>	<b>689,345</b>	<b>687,151</b>	<b>690,956</b>	<b>701,616</b>	<b>715,021</b>	<b>713,637</b>
<b>Ending Stocks</b>						
North America	26,718	24,950	26,817	28,104	29,893	29,521
South America	4,107	3,839	7,063	7,015	6,701	6,701
European Union - 28	13,522	10,711	9,867	13,067	14,780	15,480
Other Europe	1,458	1,149	1,103	1,242	1,304	1,304
Former Soviet Union - 12	26,006	13,920	15,117	19,455	22,062	20,545
Middle East	12,193	13,798	18,345	17,830	17,755	19,295
North Africa	14,094	11,487	13,550	12,347	12,572	13,232
Sub-Saharan Africa	2,401	2,486	2,957	3,220	2,746	2,941
East Asia	59,235	57,509	68,487	78,091	93,093	93,393
South Asia	25,448	28,173	21,642	22,568	16,608	16,598
Southeast Asia	4,678	3,814	3,582	4,295	3,902	3,840
Oceania	7,436	4,983	4,875	4,461	4,777	5,276
Others	372	341	367	416	363	362
<b>Total</b>	<b>197,668</b>	<b>177,160</b>	<b>193,772</b>	<b>212,111</b>	<b>226,556</b>	<b>228,488</b>

NOTES: Regional definitions appear on last page of this circular. Imports are reported on a trade year basis. All other data are reported using local marketing years.

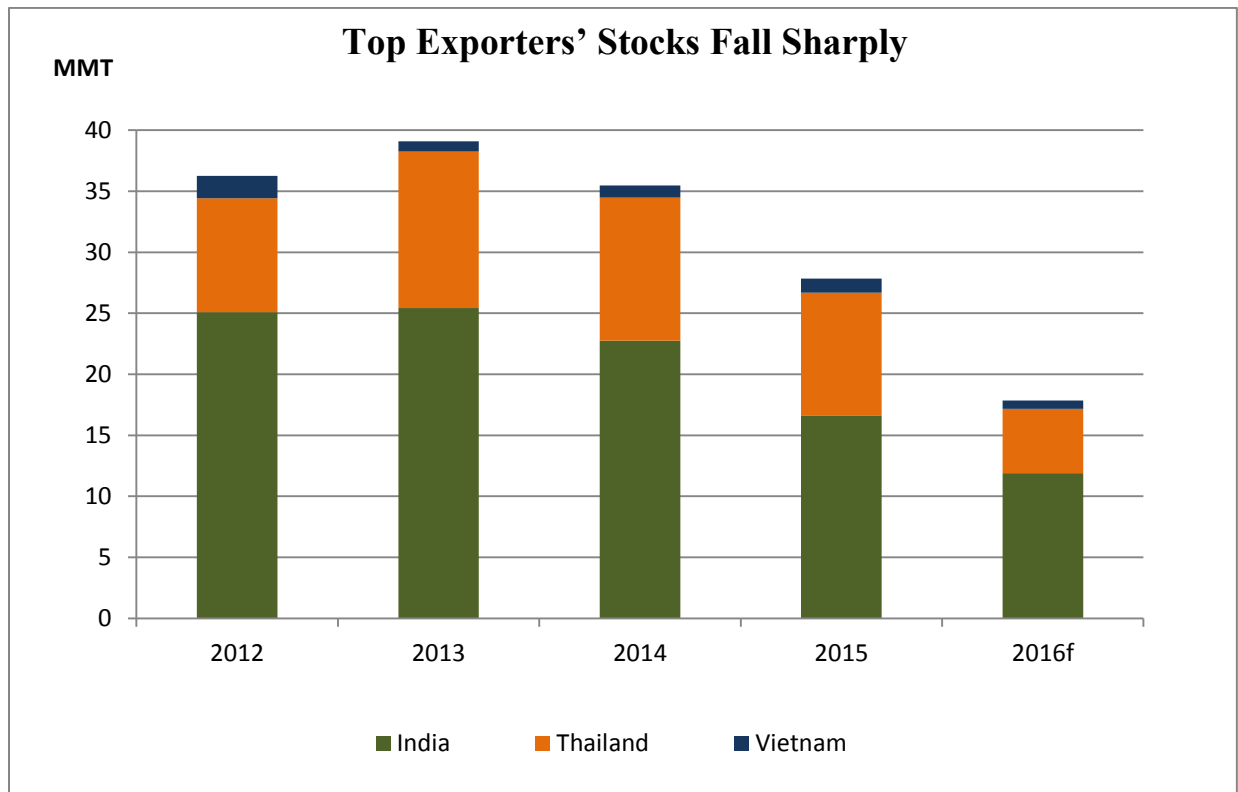


---

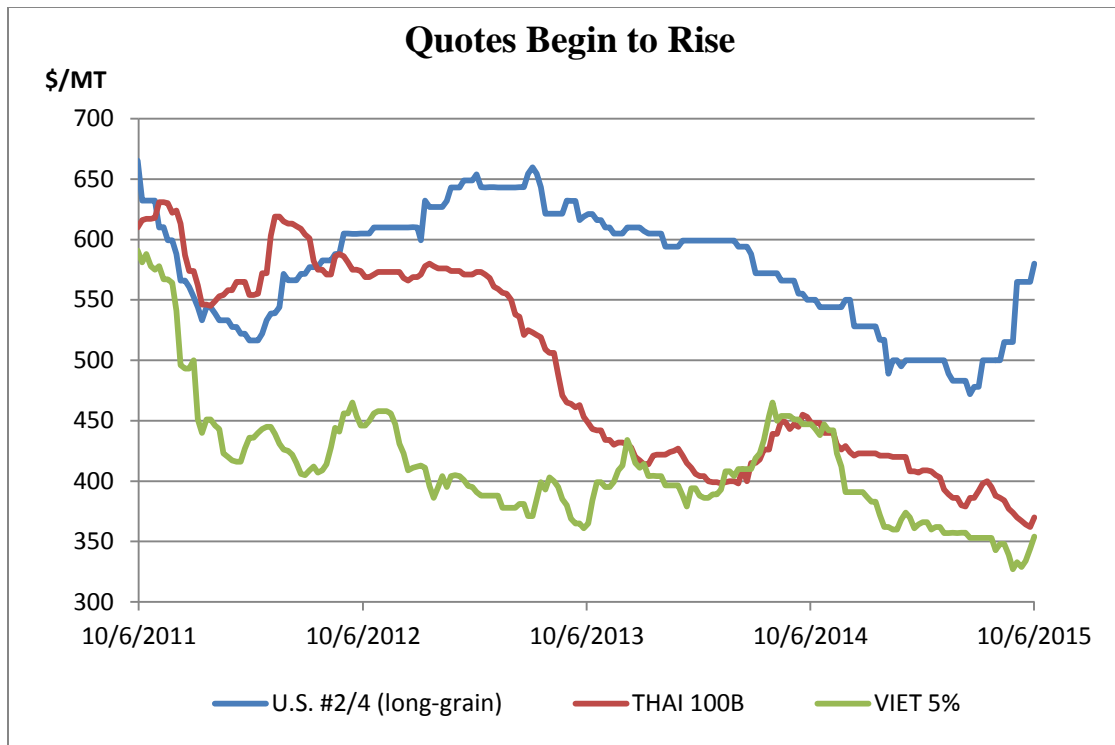
## RICE: WORLD MARKETS AND TRADE

### OVERVIEW

Global production for 2015/16 is down from last month due mainly to reductions for India and Thailand. Global trade is marginally lower as reduced Thai exports are partly offset by Pakistan. Global consumption is virtually unchanged, while stocks are reduced. U.S. exports are unchanged.



The combined stocks level of the top three exporters --India, Thailand, and Vietnam-- is projected to decline 36 percent (or 10 million tons) from a year ago. The sharp decline is due mainly to reduced crops in India and Thailand. In particular, historic dryness in Thailand has led the government to ban plantings of the off-season crop, which account for nearly 30 percent of national production. The crop in Vietnam is currently forecast to be flat year-to-year, and stronger exports are expected to draw down stocks. Tightening stocks in these exporters would suggest strong prices, given that these countries account for over 60 percent of global exports. However, prices in these countries have increased modestly (see below).



Export quotes for Thai and Viet rice are up from last month, supported by government-to-government sales to the Philippines. Quotes for Viet 5 percent broken are up \$21 to \$354 per ton, while Thai 100B quotes rose \$18 to \$378 per ton during the month.

U.S. quotes are up \$15 to \$580 per ton, and their premium over Southeast Asian origins have surpassed \$200 per ton due in part to a strong U.S. dollar.

### **SELECTED TRADE CHANGES for 2016**

- **Thailand's** exports are cut 700,000 tons to 9.5 million on reduced supplies.
- **Pakistan's** exports are boosted 500,000 tons to 4.5 million on less competition from Thailand.
- **Iraq's** imports are down 100,000 tons to 1.2 million on previous year's level (for 2015, imports are lowered 150,000 tons to 1.1 million reflecting delayed purchases via tenders).
- **Philippines's** imports are up 400,000 tons to 1.8 million to reflect approved purchases from Vietnam and Thailand.

**World Rice Trade**  
**January/December Year, Thousand Metric Tons**

	2011/12	2012/13	2013/14	2014/15	2015/16 Sep	2015/16 Oct
<b>TY Exports</b>						
Argentina	608	526	494	400	480	480
Australia	449	460	404	400	330	330
Brazil	1,105	830	850	800	800	800
Burma	1,357	1,163	1,688	2,000	1,800	1,800
Cambodia	900	1,075	1,000	1,100	1,000	1,000
China	267	447	393	400	400	400
Egypt	600	700	600	250	400	400
European Union	194	203	284	260	220	220
Guyana	265	346	422	500	520	520
India	10,250	10,480	10,907	11,500	9,500	9,500
Pakistan	3,399	4,126	3,600	4,000	4,000	4,500
Paraguay	262	365	380	400	500	500
Thailand	6,945	6,722	10,969	9,000	10,200	9,500
Uruguay	1,056	939	957	950	950	950
Vietnam	7,717	6,700	6,325	6,200	7,000	7,000
Others	1,276	1,089	1,026	954	881	871
<b>Subtotal</b>	<b>36,650</b>	<b>36,171</b>	<b>40,299</b>	<b>39,114</b>	<b>38,981</b>	<b>38,771</b>
<b>United States</b>	<b>3,298</b>	<b>3,295</b>	<b>2,998</b>	<b>3,350</b>	<b>3,250</b>	<b>3,250</b>
<b>World Total</b>	<b>39,948</b>	<b>39,466</b>	<b>43,297</b>	<b>42,464</b>	<b>42,231</b>	<b>42,021</b>
<b>TY Imports</b>						
Angola	360	430	496	450	450	450
Bangladesh	53	114	1,290	750	850	850
Brazil	732	712	586	450	700	700
Cameroon	450	550	610	525	530	530
China	2,900	3,483	4,168	4,500	4,700	4,700
Cote d'Ivoire	1,265	830	950	1,000	950	900
Cuba	330	413	377	450	500	500
European Union	1,313	1,375	1,556	1,580	1,550	1,550
Ghana	595	725	590	580	650	600
Indonesia	1,960	650	1,225	1,250	1,300	1,300
Iran	1,500	2,220	1,650	1,700	1,600	1,600
Iraq	1,478	1,294	1,080	1,100	1,300	1,200
Japan	650	690	669	650	700	700
Kenya	400	410	440	450	460	460
Malaysia	1,006	885	989	950	1,000	1,000
Mexico	680	746	658	680	785	700
Mozambique	445	500	500	480	500	500
Nigeria	3,400	2,400	3,200	4,000	3,000	3,000
Philippines	1,500	1,000	1,800	1,800	1,400	1,800
Saudi Arabia	1,193	1,326	1,410	1,460	1,550	1,550
Senegal	1,200	1,075	1,200	1,100	1,100	1,100
South Africa	870	990	910	980	1,000	950
United Arab Emirates	430	440	450	460	460	460
Venezuela	375	500	480	500	500	500
Vietnam	100	100	300	400	500	500
Others	11,289	11,955	12,643	11,023	11,068	10,948
<b>Subtotal</b>	<b>36,474</b>	<b>35,813</b>	<b>40,227</b>	<b>39,268</b>	<b>39,103</b>	<b>39,048</b>
<b>Unaccounted</b>	<b>2,834</b>	<b>2,978</b>	<b>2,315</b>	<b>2,396</b>	<b>2,308</b>	<b>2,153</b>
<b>United States</b>	<b>640</b>	<b>675</b>	<b>755</b>	<b>800</b>	<b>820</b>	<b>820</b>
<b>World Total</b>	<b>39,948</b>	<b>39,466</b>	<b>43,297</b>	<b>42,464</b>	<b>42,231</b>	<b>42,021</b>

TY=Trade Year, see Endnotes. Note about dates: 2014/15 is calendar year 2015, 2013/14 is calendar year 2014, and so on.

**World Rice Production, Consumption, and Stocks**  
**Local Marketing Years, Thousand Metric Tons**

	2011/12	2012/13	2013/14	2014/15	2015/16 Sep	2015/16 Oct
<b>Milled Production</b>						
Bangladesh	33,700	33,820	34,390	34,500	35,000	35,000
Brazil	7,888	8,037	8,300	8,500	8,000	8,000
Burma	11,473	11,715	11,957	12,600	12,200	12,200
Cambodia	4,268	4,670	4,725	4,700	4,700	4,700
China	140,700	143,000	142,530	144,500	145,500	145,500
Egypt	4,250	4,675	4,750	4,530	4,000	4,000
India	105,310	105,240	106,646	104,800	104,000	103,500
Indonesia	36,500	36,550	36,300	36,300	36,300	36,300
Japan	7,812	7,923	7,937	7,842	7,900	7,900
Korea, South	4,224	4,006	4,230	4,241	4,000	4,000
Nepal	3,381	3,003	3,361	3,100	3,100	3,100
Pakistan	6,200	5,800	6,700	6,900	6,900	6,900
Philippines	10,710	11,428	11,858	11,915	12,000	12,000
Thailand	20,460	20,200	20,460	18,750	18,000	16,400
Vietnam	27,152	27,537	28,161	28,074	28,200	28,200
Others	37,779	38,840	39,968	40,488	39,942	40,360
<b>Subtotal</b>	461,807	466,444	472,273	471,740	469,742	468,060
<b>United States</b>	5,866	6,348	6,117	7,068	6,017	5,963
<b>World Total</b>	467,673	472,792	478,390	478,808	475,759	474,023
<b>Consumption and Residual</b>						
Bangladesh	34,300	34,500	34,900	35,200	35,500	35,500
Brazil	7,928	7,850	7,900	7,900	7,950	7,950
Burma	10,200	10,400	10,450	10,550	10,500	10,500
Cambodia	3,400	3,550	3,650	3,700	3,700	3,700
China	139,600	144,000	146,300	148,400	151,000	151,000
Egypt	3,620	4,050	4,000	4,000	4,000	4,000
India	93,334	94,031	99,180	99,251	99,200	99,200
Indonesia	38,188	38,127	38,500	38,600	38,650	38,650
Japan	8,396	8,367	8,285	8,313	8,375	8,375
Korea, South	4,880	4,489	4,422	4,450	4,360	4,360
Nepal	3,677	3,353	3,811	3,500	3,500	3,500
Nigeria	5,600	5,300	5,800	6,400	6,000	6,000
Philippines	12,860	12,850	12,850	13,200	13,250	13,250
Thailand	10,400	10,600	10,875	11,700	12,000	12,000
Vietnam	19,650	21,900	22,000	22,100	22,200	22,200
Others	56,912	59,048	61,292	61,101	61,375	61,314
<b>Subtotal</b>	457,466	465,109	477,579	480,504	483,437	483,536
<b>United States</b>	3,492	3,779	3,977	4,117	3,980	3,981
<b>World Total</b>	460,958	468,888	481,556	484,621	487,417	487,517
<b>Ending Stocks</b>						
Bangladesh	1,341	696	937	1,402	1,502	1,502
China	45,023	46,826	46,811	46,800	45,711	45,600
India	25,100	25,440	22,757	16,606	12,500	11,906
Indonesia	7,403	6,476	5,501	4,451	3,401	3,401
Japan	2,735	2,857	3,108	3,212	3,412	3,362
Philippines	1,509	1,487	1,695	2,110	2,125	2,560
Thailand	9,330	12,808	11,724	10,074	6,174	5,274
Others	13,118	13,020	14,042	15,580	14,017	13,424
<b>Subtotal</b>	105,559	109,610	106,575	100,235	88,842	87,029
<b>United States</b>	1,303	1,156	1,025	1,552	1,319	1,264
<b>World Total</b>	106,862	110,766	107,600	101,787	90,161	88,293

Note: All data are reported on a milled basis.

## Regional Rice Imports, Production, Consumption, and Stocks

Thousand Metric Tons

	2011/12	2012/13	2013/14	2014/15	Sep 2015/16	Oct 2015/16
<b>TY Imports</b>						
North America	1,664	1,776	1,771	1,830	1,965	1,880
Caribbean	845	971	901	1,025	1,075	1,075
South America	1,896	1,843	1,824	1,737	1,897	1,897
Other Europe	114	125	89	130	125	125
Former Soviet Union - 12	456	537	554	421	476	476
Middle East	6,455	7,152	6,637	6,425	6,690	6,590
North Africa	777	487	480	485	485	485
Sub-Saharan Africa	12,135	11,740	12,934	12,850	12,050	11,840
East Asia	4,389	5,332	5,761	6,145	6,415	6,355
South Asia	737	722	2,581	1,670	1,620	1,620
Southeast Asia	5,488	3,606	5,020	5,065	4,850	5,250
Others	2,158	2,197	2,430	2,285	2,275	2,275
<b>Total</b>	<b>37,114</b>	<b>36,488</b>	<b>40,982</b>	<b>40,068</b>	<b>39,923</b>	<b>39,868</b>
<b>Production</b>						
North America	5,979	6,479	6,248	7,240	6,182	6,128
Caribbean	1,002	974	1,040	1,065	987	987
South America	15,215	15,852	16,384	16,743	16,277	16,277
European Union - 28	2,139	2,100	1,937	1,881	1,930	1,930
Former Soviet Union - 12	1,294	1,294	1,205	1,185	1,205	1,205
Middle East	2,170	2,251	2,450	2,443	2,359	2,359
North Africa	4,289	4,704	4,789	4,530	4,000	4,000
Sub-Saharan Africa	12,997	13,376	14,006	14,464	14,067	14,485
East Asia	155,508	157,859	157,794	159,383	160,170	160,170
South Asia	152,067	150,895	154,392	152,651	152,462	151,962
Southeast Asia	113,649	115,490	116,867	116,015	114,961	113,361
Others	1,364	1,518	1,278	1,208	1,159	1,159
<b>Total</b>	<b>467,673</b>	<b>472,792</b>	<b>478,390</b>	<b>478,808</b>	<b>475,759</b>	<b>474,023</b>
<b>Domestic Consumption</b>						
North America	4,668	4,977	5,202	5,337	5,250	5,211
Central America	1,156	1,181	1,188	1,193	1,212	1,212
Caribbean	1,977	1,964	1,973	2,131	2,088	2,078
South America	14,180	14,404	14,556	14,653	14,809	14,809
European Union - 28	3,300	3,250	3,250	3,265	3,280	3,280
Former Soviet Union - 12	1,422	1,559	1,535	1,414	1,451	1,451
Middle East	8,603	8,854	9,029	8,875	9,070	8,940
North Africa	4,045	4,572	4,480	4,460	4,460	4,460
Sub-Saharan Africa	23,811	24,777	26,628	26,808	26,312	26,491
East Asia	156,232	160,365	162,627	164,568	167,065	167,005
South Asia	137,234	137,576	143,946	144,542	144,762	144,762
Southeast Asia	99,148	102,008	103,102	104,706	105,241	105,241
Others	661	707	676	530	540	540
<b>Total</b>	<b>456,437</b>	<b>466,194</b>	<b>478,192</b>	<b>482,482</b>	<b>485,540</b>	<b>485,480</b>
<b>Ending Stocks</b>						
North America	1,455	1,345	1,176	1,662	1,472	1,366
Central America	273	241	217	211	208	208
Caribbean	343	279	261	226	227	210
South America	1,606	1,491	1,805	2,068	1,850	1,832
European Union - 28	1,146	1,188	1,163	1,129	1,099	1,099
Middle East	1,526	2,039	1,836	1,624	1,688	1,603
North Africa	487	427	602	907	532	532
Sub-Saharan Africa	2,085	2,297	1,835	2,311	1,677	1,785
East Asia	48,887	50,826	51,183	51,456	50,641	50,480
South Asia	27,511	27,019	25,731	20,520	16,679	15,585
Southeast Asia	21,369	23,197	21,395	19,369	13,804	13,339
Oceania	40	238	241	182	102	102
Others	134	179	155	122	182	152
<b>Total</b>	<b>106,862</b>	<b>110,766</b>	<b>107,600</b>	<b>101,787</b>	<b>90,161</b>	<b>88,293</b>

NOTES: Regional definitions appear on last page of this circular. Imports are reported on a trade year basis. All other data are reported using local marketing years.

---

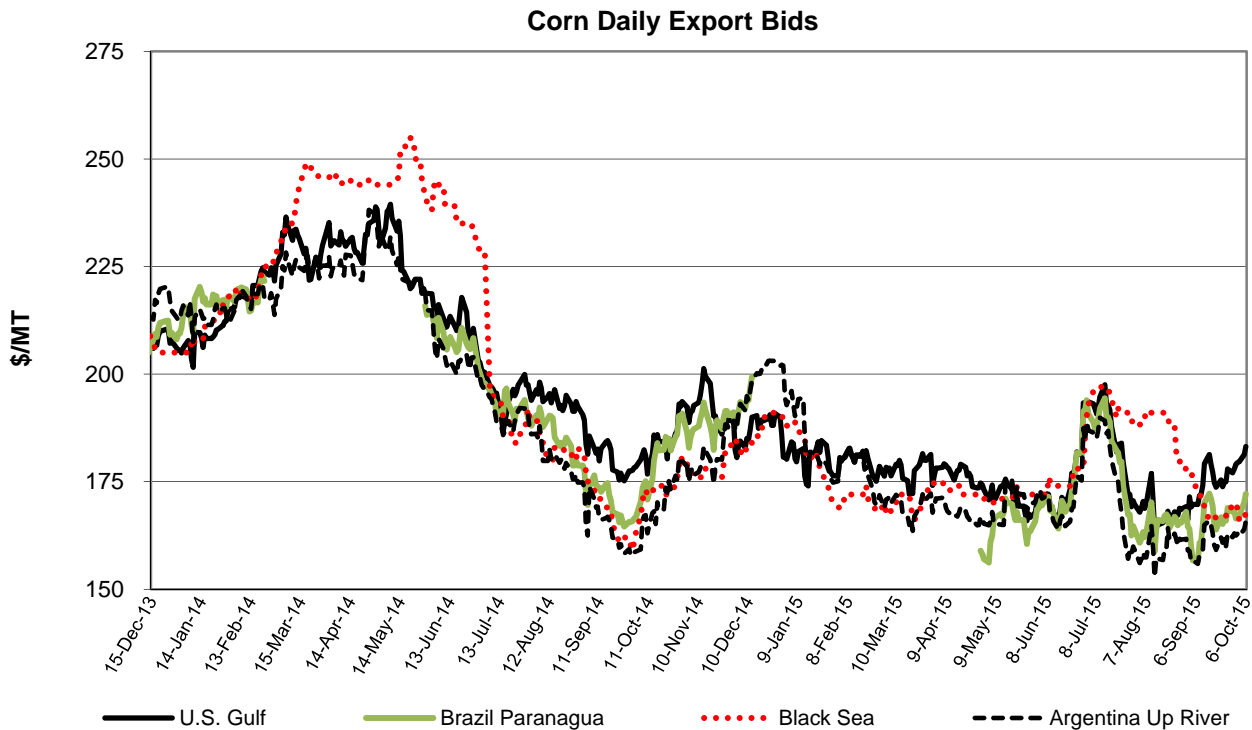
## COARSE GRAINS: WORLD MARKETS AND TRADE

### OVERVIEW

World corn production in 2015/16 is down, with smaller crops in the United States, Ukraine, Argentina, and Ethiopia more than offsetting a higher forecast for Brazil. Global trade is little changed overall, with lower exports for Argentina and Ukraine and a higher forecast for Brazil. U.S. exports are unchanged and the season-average farm price is up slightly.

### PRICES

Since the release of the September WASDE report, U.S. corn quotes rose slightly by \$4/ton to \$183, on uncertainty over crop production. USDA's September 30 *Grain Stocks* report confirmed abundant U.S. supplies, but nearby prices are uncompetitive and underscore recent lackluster sales and shipments. Argentine and Brazilian quotes were up slightly; Black Sea quotes dropped slightly over the same period.



---

## **TRADE CHANGES IN 2015/16**

### **Selected Exporters**

- **Argentine corn** is lowered 500,000 tons to 15.0 million on reduced crop prospects. (Exports for 2014/15 are also down 500,000 tons to 18.5 million.)
- **Brazilian corn** is boosted 2.0 million tons to a new record 31.0 million on higher crop prospects and record old crop exportable supplies. Trade has been boosted to a new record each of the last 4 months as production estimates have risen.
- **Ukrainian corn** is down 1.5 million tons to 17.0 million due to a sharp cut in production. (Exports for 2014/15 are up 300,000 tons to 19.8 million.)
- **Canadian barley** is up 300,000 tons to 1.5 million because of greater exportable supplies and reduced competition.
- **Russian barley** is lowered 500,000 tons to 4.0 million based on a sharply reduced crop.
- **Ukrainian barley** is down 500,000 tons to 3.5 million based on higher-than-anticipated late-season shipments for 2014/15. (Exports for 2014/15 are up 500,000 tons to 4.0 million.)

### **Selected Importers**

- **Saudi corn** is lowered 500,000 tons to 4.0 million based on weaker-than-expected trade last year; however the trade and consumption forecast still reflect robust growth in poultry production. (Imports for 2014/15 are down 500,000 tons to 3.0 million.)
- **Saudi barley** is cut 500,000 tons to 7.0 million on higher-than-anticipated late-season shipments for 2014/15. (Imports for 2014/15 are up 900,000 tons to 7.5 million.)

---

## **TRADE CHANGES IN 2014/15**

### **Selected Exporters - based on trade data**

- **U.S. corn** is down 200,000 tons to 46.8 million.
- **EU corn** is raised 200,000 tons to 4.0 million.
- **South African corn** is lowered 200,000 tons to 800,000.
- **EU barley** is boosted 1.0 million tons to a record 10.5 million based on licenses and trade data.
- **Australian sorghum** is up 200,000 tons to a new record 1.7 million.

### **Selected Importers - based on trade data**

- **Chinese corn** is boosted 200,000 tons to a new record 5.7 million.
- **EU corn** is lowered 400,000 tons to 8.6 million.
- **Chinese barley** is raised 200,000 tons to a new record 9.0 million.



**World Coarse Grain Trade**  
**October/September Year, Thousand Metric Tons**

	2011/12	2012/13	2013/14	2014/15	2015/16 Sep	2015/16 Oct
<b>TY Exports</b>						
Argentina	22,308	29,497	16,630	21,105	19,005	18,505
Australia	7,279	6,410	7,003	7,525	7,325	7,325
Brazil	12,677	26,078	22,059	22,040	29,015	31,015
Canada	3,853	4,658	5,460	3,785	3,400	3,700
European Union	7,177	8,914	7,837	14,905	8,305	8,305
India	4,858	5,541	4,524	1,450	2,500	2,500
Paraguay	2,188	2,861	2,718	2,705	2,305	2,305
Russia	5,997	4,365	7,043	8,520	8,610	8,110
Serbia	2,345	628	1,755	2,925	1,725	1,725
Ukraine	17,447	15,527	24,125	24,000	22,680	20,680
Others	7,127	7,106	8,694	6,827	7,115	7,045
<b>Subtotal</b>	93,256	111,585	107,848	115,787	111,985	111,215
<b>United States</b>	40,106	20,586	56,772	56,330	58,335	58,335
<b>World Total</b>	133,362	132,171	164,620	172,117	170,320	169,550
<b>TY Imports</b>						
Algeria	3,741	3,289	4,946	4,760	4,810	4,810
Canada	764	523	714	1,635	1,710	1,610
Chile	1,523	1,327	1,621	1,600	1,750	1,750
China	7,924	5,604	12,445	24,850	21,250	21,250
Colombia	4,103	4,090	4,795	4,730	4,830	4,830
Dominican Republic	1,054	1,046	1,011	1,100	1,100	1,100
Egypt	7,252	5,096	8,776	7,555	8,055	8,055
European Union	6,908	11,777	16,262	9,050	16,255	16,255
Indonesia	1,724	2,719	3,501	3,500	3,000	3,000
Iran	5,700	4,800	6,600	8,000	5,500	5,500
Israel	1,530	1,564	2,073	2,075	2,175	2,175
Japan	17,730	17,743	17,501	16,825	17,090	17,075
Jordan	1,311	1,406	1,672	1,550	1,475	1,475
Kenya	490	202	894	1,000	1,100	1,100
Korea, South	7,726	8,265	10,499	10,090	10,090	10,090
Libya	829	1,220	1,493	1,500	1,450	1,450
Malaysia	3,309	3,048	3,476	3,400	3,600	3,600
Mexico	12,819	7,627	11,317	11,250	10,775	10,775
Morocco	2,479	1,831	2,858	2,300	2,300	2,300
Peru	1,927	2,404	2,336	2,850	2,625	2,625
Saudi Arabia	10,485	12,390	11,331	10,525	12,025	11,025
Taiwan	4,478	4,398	4,356	4,300	4,400	4,400
Tunisia	1,071	1,610	1,449	1,500	1,500	1,500
Venezuela	2,596	2,154	2,627	2,000	2,000	2,000
Vietnam	1,600	1,700	2,800	3,500	3,000	3,000
Others	15,944	15,464	17,468	17,835	16,130	16,300
<b>Subtotal</b>	127,017	123,297	154,821	159,280	159,995	159,050
<b>Unaccounted</b>	3,203	2,359	6,477	9,604	7,275	7,450
<b>United States</b>	3,142	6,515	3,322	3,233	3,050	3,050
<b>World Total</b>	133,362	132,171	164,620	172,117	170,320	169,550

TY=Trade Year, see Endnotes.

**World Coarse Grains Production, Consumption, and Stocks**  
**Local Marketing Years, Thousand Metric Tons**

	2011/12	2012/13	2013/14	2014/15	2015/16 Sep	2015/16 Oct
<b>Production</b>						
Argentina	30,105	37,246	35,665	33,532	33,461	32,461
Australia	12,257	11,414	12,158	11,663	12,575	12,775
Brazil	75,884	84,253	82,603	87,603	81,583	82,583
Canada	22,921	24,445	28,745	21,992	23,300	23,628
China	198,635	212,192	225,070	222,170	231,500	231,500
Ethiopia	12,264	12,286	14,468	13,350	13,790	12,400
European Union	149,923	145,942	158,976	170,588	148,588	149,344
India	42,250	39,940	43,210	41,970	41,600	41,100
Indonesia	8,850	8,500	9,100	9,400	9,600	9,600
Mexico	25,689	28,881	32,020	32,326	31,975	31,975
Nigeria	17,421	18,573	19,292	19,015	17,950	17,950
Russia	33,077	28,658	35,735	40,386	41,800	39,800
South Africa	13,268	12,873	15,518	11,277	14,068	14,105
Turkey	11,299	10,595	13,075	9,475	14,075	14,075
Ukraine	33,476	29,527	39,918	39,345	36,775	34,775
Others	147,174	146,783	148,480	156,094	155,994	154,038
<b>Subtotal</b>	<b>834,493</b>	<b>852,108</b>	<b>914,033</b>	<b>920,186</b>	<b>908,634</b>	<b>902,109</b>
<b>United States</b>	<b>322,451</b>	<b>285,311</b>	<b>367,089</b>	<b>377,234</b>	<b>365,685</b>	<b>365,138</b>
<b>World Total</b>	<b>1,156,944</b>	<b>1,137,419</b>	<b>1,281,122</b>	<b>1,297,420</b>	<b>1,274,319</b>	<b>1,267,247</b>
<b>Domestic Consumption</b>						
Argentina	10,510	12,050	13,595	14,332	15,076	14,976
Brazil	53,653	55,803	58,028	59,928	61,843	61,843
Canada	20,285	20,339	22,372	21,236	21,483	21,511
China	196,192	209,671	227,600	242,650	243,475	243,475
Egypt	12,736	12,910	14,080	14,809	15,408	15,408
Ethiopia	11,850	12,150	14,300	14,050	14,000	12,625
European Union	151,460	153,095	164,105	163,870	161,525	161,320
India	37,750	35,275	37,600	40,000	39,850	39,850
Iran	10,320	10,520	11,320	11,820	12,520	12,520
Japan	17,990	18,030	17,640	17,025	17,240	17,225
Mexico	37,985	36,195	40,885	41,940	42,590	42,590
Nigeria	17,321	18,700	19,350	18,950	18,150	18,150
Russia	27,728	25,134	28,619	31,439	32,100	31,600
Turkey	11,755	13,005	13,430	13,080	14,130	14,130
Ukraine	15,559	14,661	15,927	15,185	14,455	13,955
Others	214,768	218,795	225,674	234,072	240,334	238,038
<b>Subtotal</b>	<b>866,037</b>	<b>860,136</b>	<b>932,803</b>	<b>966,947</b>	<b>968,633</b>	<b>962,383</b>
<b>United States</b>	<b>288,857</b>	<b>275,537</b>	<b>305,048</b>	<b>311,344</b>	<b>313,284</b>	<b>313,164</b>
<b>World Total</b>	<b>1,154,894</b>	<b>1,135,673</b>	<b>1,237,851</b>	<b>1,278,291</b>	<b>1,281,917</b>	<b>1,275,547</b>
<b>Ending Stocks</b>						
Brazil	9,821	14,559	19,259	18,819	15,544	15,544
Canada	3,390	3,024	4,648	3,227	3,354	3,254
China	60,362	68,378	78,260	82,580	91,580	91,780
European Union	15,745	13,083	15,562	17,241	12,554	12,815
Iran	4,684	4,654	5,094	7,234	6,074	6,074
Mexico	1,857	1,628	3,583	4,712	4,372	4,372
Saudi Arabia	3,211	3,391	3,888	3,873	3,693	3,693
Others	40,160	36,547	47,459	46,558	43,527	41,665
<b>Subtotal</b>	<b>139,230</b>	<b>145,264</b>	<b>177,753</b>	<b>184,244</b>	<b>180,698</b>	<b>179,197</b>
<b>United States</b>	<b>27,819</b>	<b>23,531</b>	<b>34,313</b>	<b>46,951</b>	<b>44,126</b>	<b>43,698</b>
<b>World Total</b>	<b>167,049</b>	<b>168,795</b>	<b>212,066</b>	<b>231,195</b>	<b>224,824</b>	<b>222,895</b>

## Regional Coarse Grains Imports, Production, Consumption, and Stocks

Thousand Metric Tons

	2011/12	2012/13	2013/14	2014/15	Sep 2015/16	Oct 2015/16
<b>TY Imports</b>						
North America	16,725	14,665	15,353	16,118	15,535	15,435
Central America	2,769	2,470	2,923	3,275	3,350	3,350
Caribbean	2,156	2,327	2,330	2,410	2,410	2,410
South America	11,967	11,814	13,182	12,725	12,750	12,750
European Union - 28	6,908	11,777	16,262	9,050	16,255	16,255
Former Soviet Union - 12	1,038	725	832	807	815	815
Middle East	23,515	25,076	26,613	27,295	24,840	23,840
North Africa	15,372	13,046	19,522	17,615	18,115	18,115
Sub-Saharan Africa	3,328	2,745	3,629	4,103	4,000	4,120
East Asia	38,040	36,163	44,880	56,165	52,930	52,915
Southeast Asia	7,317	8,058	11,287	11,635	10,780	10,780
Others	1,024	946	1,330	1,315	1,265	1,315
<b>Total</b>	<b>130,159</b>	<b>129,812</b>	<b>158,143</b>	<b>162,513</b>	<b>163,045</b>	<b>162,100</b>
<b>Production</b>						
North America	371,061	338,637	427,854	431,552	420,960	420,741
South America	119,682	136,283	132,043	134,882	129,304	129,304
European Union - 28	149,923	145,942	158,976	170,588	148,588	149,344
Other Europe	9,497	6,570	8,813	10,696	8,546	8,446
Former Soviet Union - 12	78,648	68,221	87,627	91,452	89,706	85,831
Middle East	20,412	18,769	21,760	17,942	22,781	22,781
North Africa	11,142	10,126	11,647	11,192	12,532	12,532
Sub-Saharan Africa	99,469	103,590	103,848	105,158	106,789	103,655
East Asia	200,771	214,639	227,482	224,599	233,909	233,909
South Asia	50,495	48,589	52,250	51,018	50,458	49,958
Southeast Asia	28,379	29,138	30,968	31,483	32,703	32,503
Oceania	12,813	12,082	12,804	12,335	13,236	13,436
Others	4,652	4,833	5,050	4,523	4,807	4,807
<b>Total</b>	<b>1,156,944</b>	<b>1,137,419</b>	<b>1,281,122</b>	<b>1,297,420</b>	<b>1,274,319</b>	<b>1,267,247</b>
<b>Domestic Consumption</b>						
North America	347,127	332,071	368,305	374,520	377,357	377,265
South America	85,901	90,054	94,608	97,569	100,564	100,464
European Union - 28	151,460	153,095	164,105	163,870	161,525	161,320
Other Europe	8,375	7,100	7,702	8,037	8,040	8,040
Former Soviet Union - 12	54,378	50,230	55,633	57,987	58,161	57,286
Middle East	41,186	43,027	45,890	45,444	48,316	47,616
North Africa	25,266	24,941	27,998	29,896	30,940	30,940
Sub-Saharan Africa	97,790	103,311	103,168	107,116	107,941	105,045
East Asia	228,717	243,025	261,824	276,456	277,561	277,546
South Asia	45,833	43,444	46,591	49,213	49,128	49,128
Southeast Asia	34,612	35,867	37,904	40,140	41,565	41,365
Oceania	6,518	6,132	5,765	5,323	5,926	5,926
Others	9,556	9,573	10,080	10,159	10,439	10,439
<b>Total</b>	<b>1,136,719</b>	<b>1,141,870</b>	<b>1,229,573</b>	<b>1,265,730</b>	<b>1,277,463</b>	<b>1,272,380</b>
<b>Ending Stocks</b>						
North America	33,066	28,183	42,544	54,890	51,852	51,324
South America	14,549	20,442	26,281	24,670	20,235	20,335
European Union - 28	15,745	13,083	15,562	17,241	12,554	12,815
Other Europe	1,024	603	766	1,281	902	852
Former Soviet Union - 12	6,185	5,037	6,973	7,617	7,331	6,037
Middle East	10,547	10,059	11,840	13,071	12,306	12,306
North Africa	5,504	3,526	5,719	5,152	4,923	4,849
Sub-Saharan Africa	9,272	9,055	9,971	9,470	8,798	8,665
East Asia	63,392	71,035	81,590	85,848	94,851	95,051
South Asia	2,938	2,814	4,347	4,838	3,968	3,368
Southeast Asia	3,061	3,275	4,396	5,229	5,018	5,007
Oceania	978	915	1,133	930	1,035	1,235
Others	788	768	944	958	1,051	1,051
<b>Total</b>	<b>167,049</b>	<b>168,795</b>	<b>212,066</b>	<b>231,195</b>	<b>224,824</b>	<b>222,895</b>

NOTES: Regional definitions appear on last page of this circular. Imports are reported on a trade year basis. All other data are reported using local marketing years.

**World Corn Trade**  
**October/September Year, Thousand Metric Tons**

	2011/12	2012/13	2013/14	2014/15	2015/16 Sep	2015/16 Oct
<b>TY Exports</b>						
Argentina	16,501	22,789	12,846	18,500	15,500	15,000
Brazil	12,674	26,044	22,041	22,000	29,000	31,000
Burma	200	550	700	850	900	900
European Union	3,287	2,193	2,401	4,000	1,000	1,000
India	4,674	4,768	3,889	1,100	2,000	2,000
Paraguay	2,188	2,858	2,714	2,700	2,300	2,300
Russia	2,027	1,917	4,192	2,900	4,000	4,000
Serbia	2,331	601	1,736	2,900	1,700	1,700
South Africa	1,831	2,398	2,104	800	1,000	1,000
Ukraine	15,157	12,726	20,004	19,800	18,500	17,000
Others	4,470	5,421	6,843	4,725	4,885	4,835
<b>Subtotal</b>	<b>65,340</b>	<b>82,265</b>	<b>79,470</b>	<b>80,275</b>	<b>80,785</b>	<b>80,735</b>
<b>United States</b>	<b>38,342</b>	<b>18,262</b>	<b>50,684</b>	<b>46,800</b>	<b>47,000</b>	<b>47,000</b>
<b>World Total</b>	<b>103,682</b>	<b>100,527</b>	<b>130,154</b>	<b>127,075</b>	<b>127,785</b>	<b>127,735</b>
<b>TY Imports</b>						
Algeria	3,231	2,918	4,156	4,000	4,200	4,200
Canada	747	493	679	1,500	1,500	1,500
Chile	906	844	1,456	1,400	1,600	1,600
China	5,231	2,702	3,277	5,700	3,000	3,000
Colombia	3,209	3,266	4,436	4,400	4,500	4,500
Cuba	743	911	928	900	900	900
Dominican Republic	1,054	1,046	1,011	1,100	1,100	1,100
Egypt	7,154	5,059	8,726	7,500	8,000	8,000
European Union	6,113	11,362	15,919	8,600	16,000	16,000
Guatemala	691	678	767	850	900	900
Indonesia	1,724	2,719	3,501	3,500	3,000	3,000
Iran	4,000	3,700	5,500	6,000	4,000	4,000
Israel	1,221	1,224	1,652	1,700	1,800	1,800
Japan	14,892	14,412	15,121	14,700	14,800	14,800
Kenya	400	100	800	900	1,000	1,000
Korea, South	7,636	8,174	10,406	10,000	10,000	10,000
Malaysia	3,309	3,048	3,476	3,400	3,600	3,600
Mexico	11,172	5,676	10,954	11,000	10,500	10,500
Morocco	1,943	1,684	2,349	2,000	2,100	2,100
Peru	1,772	2,254	2,232	2,700	2,500	2,500
Saudi Arabia	1,816	2,063	2,684	3,000	4,500	4,000
Taiwan	4,341	4,232	4,189	4,200	4,300	4,300
Tunisia	853	846	993	1,000	1,100	1,100
Venezuela	2,596	2,154	2,626	2,000	2,000	2,000
Vietnam	1,600	1,700	2,800	3,500	3,000	3,000
Others	12,335	11,622	13,737	14,461	13,070	13,225
<b>Subtotal</b>	<b>100,689</b>	<b>94,887</b>	<b>124,375</b>	<b>120,011</b>	<b>122,970</b>	<b>122,625</b>
<b>Unaccounted</b>	<b>2,228</b>	<b>1,375</b>	<b>5,052</b>	<b>6,264</b>	<b>4,065</b>	<b>4,360</b>
<b>United States</b>	<b>765</b>	<b>4,265</b>	<b>727</b>	<b>800</b>	<b>750</b>	<b>750</b>
<b>World Total</b>	<b>103,682</b>	<b>100,527</b>	<b>130,154</b>	<b>127,075</b>	<b>127,785</b>	<b>127,735</b>

TY=Trade Year, see Endnotes.

**World Corn Production, Consumption, and Stocks**  
**Local Marketing Years, Thousand Metric Tons**

	2011/12	2012/13	2013/14	2014/15	2015/16 Sep	2015/16 Oct
<b>Production</b>						
Argentina	21,000	27,000	26,000	26,500	25,000	24,000
Brazil	73,000	81,500	80,000	85,000	79,000	80,000
Canada	11,359	13,060	14,194	11,487	12,300	12,300
China	192,780	205,614	218,490	215,670	225,000	225,000
Egypt	5,500	5,800	5,800	5,960	6,000	6,000
Ethiopia	6,069	6,158	7,451	6,500	7,000	6,000
European Union	68,123	58,896	64,630	75,730	57,996	57,996
India	21,760	22,260	24,260	23,670	23,500	23,000
Indonesia	8,850	8,500	9,100	9,400	9,600	9,600
Mexico	18,726	21,591	22,880	25,000	23,500	23,500
Nigeria	9,250	7,630	7,700	7,515	7,000	7,000
Philippines	7,130	7,261	7,532	7,671	8,000	7,800
Russia	6,962	8,213	11,635	11,325	13,500	13,500
South Africa	12,759	12,365	14,925	10,800	13,500	13,500
Ukraine	22,838	20,922	30,900	28,450	27,000	25,000
Others	90,878	90,343	94,647	96,907	95,129	94,095
<b>Subtotal</b>	576,984	597,113	640,144	647,585	633,025	628,291
<b>United States</b>	312,789	273,192	351,272	361,091	345,073	344,311
<b>World Total</b>	889,773	870,305	991,416	1,008,676	978,098	972,602
<b>Total Consumption</b>						
Argentina	7,000	7,900	8,800	9,400	10,000	10,000
Brazil	50,500	52,500	55,000	57,000	59,000	59,000
Canada	11,636	11,605	12,700	12,800	13,350	13,350
China	188,000	200,000	212,000	217,000	219,000	219,000
Egypt	11,700	12,000	13,200	13,900	14,500	14,500
European Union	69,500	69,600	76,500	78,500	77,000	76,500
India	17,200	17,500	19,600	22,000	22,300	22,300
Indonesia	10,500	10,900	11,900	12,100	12,500	12,500
Japan	14,900	14,500	15,100	14,700	14,800	14,800
Korea, South	7,815	8,481	9,891	10,100	10,100	10,100
Mexico	29,000	27,000	31,700	34,250	34,000	34,000
Philippines	7,400	7,400	8,000	8,500	8,800	8,600
Russia	4,700	6,400	7,500	8,400	9,300	9,300
South Africa	10,700	11,000	11,500	11,200	11,400	11,400
Ukraine	7,800	8,100	9,700	9,400	8,900	8,400
Others	140,994	141,976	150,236	155,610	158,452	156,028
<b>Subtotal</b>	606,090	602,214	660,491	686,680	683,222	678,393
<b>United States</b>	277,961	262,973	292,965	301,851	302,401	302,401
<b>World Total</b>	884,051	865,187	953,456	988,531	985,623	980,794
<b>Ending Stocks</b>						
Brazil	9,212	14,150	18,972	18,572	15,172	15,172
China	59,335	67,570	77,315	81,660	90,410	90,610
European Union	6,682	5,147	6,795	8,625	5,269	5,121
Indonesia	732	1,040	1,729	2,499	2,574	2,574
Iran	3,336	3,236	4,476	5,816	4,656	4,656
Mexico	1,316	1,061	2,694	3,944	3,444	3,444
South Africa	1,276	664	2,198	1,598	2,330	2,223
Others	25,792	24,194	30,410	29,335	25,383	24,377
<b>Subtotal</b>	107,681	117,062	144,589	152,049	149,238	148,177
<b>United States</b>	25,122	20,859	31,292	43,977	40,448	39,657
<b>World Total</b>	132,803	137,921	175,881	196,026	189,686	187,834

## Regional Corn Imports, Production, Consumption, and Stocks

Thousand Metric Tons

	2011/12	2012/13	2013/14	2014/15	Sep 2015/16	Oct 2015/16
<b>TY Imports</b>						
North America	12,684	10,434	12,360	13,300	12,750	12,750
Central America	2,766	2,470	2,922	3,275	3,350	3,350
South America	9,886	9,653	12,027	11,450	11,550	11,550
European Union - 28	6,113	11,362	15,919	8,600	16,000	16,000
Former Soviet Union - 12	328	324	464	465	490	490
Middle East	10,853	10,942	13,812	15,200	13,600	13,100
North Africa	13,827	11,154	17,036	15,300	16,150	16,150
Sub-Saharan Africa	2,660	2,096	2,937	3,491	3,520	3,625
East Asia	32,282	29,673	33,072	34,700	32,200	32,200
Southeast Asia	7,304	8,040	11,246	11,620	10,765	10,765
Caribbean	2,156	2,327	2,330	2,410	2,410	2,410
Others	595	677	977	1,000	935	985
<b>Total</b>	<b>101,454</b>	<b>99,152</b>	<b>125,102</b>	<b>120,811</b>	<b>123,720</b>	<b>123,375</b>
<b>Production</b>						
North America	342,874	307,843	388,346	397,578	380,873	380,111
South America	105,578	120,997	117,456	123,006	115,625	115,625
European Union - 28	68,123	58,896	64,630	75,730	57,996	57,996
Other Europe	7,810	4,915	7,210	8,945	6,776	6,676
Former Soviet Union - 12	34,121	32,310	46,898	43,469	43,760	41,760
Middle East	7,164	7,480	8,138	7,848	9,038	9,038
North Africa	5,722	5,891	6,001	6,161	6,201	6,201
Sub-Saharan Africa	62,102	60,564	64,296	60,868	62,285	60,351
East Asia	194,585	207,760	220,595	217,791	227,113	227,113
South Asia	28,647	29,636	31,912	31,330	30,970	30,470
Central America	3,602	3,743	3,893	3,366	3,650	3,650
Southeast Asia	28,138	28,893	30,721	31,238	32,458	32,258
Others	1,307	1,377	1,320	1,346	1,353	1,353
<b>Total</b>	<b>889,773</b>	<b>870,305</b>	<b>991,416</b>	<b>1,008,676</b>	<b>978,098</b>	<b>972,602</b>
<b>Domestic Consumption</b>						
North America	318,597	301,578	337,365	348,901	349,751	349,751
South America	75,491	79,031	83,666	86,710	89,345	89,345
European Union - 28	69,500	69,600	76,500	78,500	77,000	76,500
Other Europe	6,392	5,194	5,847	6,055	6,020	6,020
Former Soviet Union - 12	16,420	18,085	21,135	21,535	22,005	21,505
Middle East	17,585	18,710	19,785	21,885	23,335	22,635
North Africa	18,000	18,450	20,800	22,100	23,050	23,050
Sub-Saharan Africa	60,348	60,033	62,828	62,770	62,812	61,088
East Asia	217,047	229,434	243,295	248,155	250,325	250,325
South Asia	23,875	24,380	27,182	29,805	30,170	30,170
Southeast Asia	34,357	35,609	37,653	39,860	41,310	41,110
Central America	6,350	6,175	6,650	6,675	6,910	6,910
Others	3,344	3,556	3,586	3,760	3,770	3,770
<b>Total</b>	<b>867,306</b>	<b>869,835</b>	<b>946,292</b>	<b>976,711</b>	<b>985,803</b>	<b>982,179</b>
<b>Ending Stocks</b>						
North America	27,803	23,469	35,586	49,208	45,129	44,338
South America	13,194	18,483	23,762	22,658	18,343	18,343
European Union - 28	6,682	5,147	6,795	8,625	5,269	5,121
Other Europe	771	353	517	1,037	653	603
Former Soviet Union - 12	2,445	2,004	3,420	2,824	2,739	2,439
Middle East	4,510	4,228	5,957	7,025	6,283	6,283
North Africa	2,994	1,719	3,168	2,919	2,210	2,210
Sub-Saharan Africa	7,058	6,631	7,966	7,169	6,824	6,672
East Asia	61,841	69,734	80,134	84,445	93,183	93,383
South Asia	1,644	2,075	3,184	3,864	2,939	2,339
Southeast Asia	3,058	3,270	4,390	5,223	5,012	5,001
Central America	503	474	610	551	616	616
Others	300	334	392	478	486	486
<b>Total</b>	<b>132,803</b>	<b>137,921</b>	<b>175,881</b>	<b>196,026</b>	<b>189,686</b>	<b>187,834</b>

NOTES: Regional definitions appear on last page of this circular. Imports are reported on a trade year basis. All other data are reported using local marketing years.

**World Barley Trade**  
**October/September Year, Thousand Metric Tons**

	2011/12	2012/13	2013/14	2014/15	2015/16 Sep	2015/16 Oct
<b>TY Exports</b>						
Argentina	3,631	3,647	2,829	1,600	2,000	2,000
Australia	5,819	4,621	6,262	5,500	6,000	6,000
Canada	1,437	1,316	1,714	1,500	1,200	1,500
European Union	3,646	6,473	4,926	10,500	7,000	7,000
India	52	542	546	300	400	400
Kazakhstan	659	151	575	500	500	500
Russia	3,668	2,366	2,762	5,500	4,500	4,000
Serbia	14	26	18	25	25	25
Turkey	103	0	9	10	25	25
Ukraine	2,166	2,659	3,827	4,000	4,000	3,500
Others	22	166	68	100	35	35
<b>Subtotal</b>	<b>21,217</b>	<b>21,967</b>	<b>23,536</b>	<b>29,535</b>	<b>25,685</b>	<b>24,985</b>
<b>United States</b>	<b>179</b>	<b>163</b>	<b>336</b>	<b>300</b>	<b>300</b>	<b>300</b>
<b>World Total</b>	<b>21,396</b>	<b>22,130</b>	<b>23,872</b>	<b>29,835</b>	<b>25,985</b>	<b>25,285</b>
<b>TY Imports</b>						
Algeria	501	364	778	750	600	600
Azerbaijan	49	14	78	125	100	100
Brazil	274	369	338	325	400	400
Canada	6	21	9	125	200	100
China	2,541	2,184	4,891	9,000	7,000	7,000
Colombia	301	232	253	275	275	275
European Union	364	52	58	225	100	100
Iran	1,700	1,100	1,100	2,000	1,500	1,500
Israel	276	244	304	325	325	325
Japan	1,257	1,356	1,294	1,150	1,200	1,200
Jordan	736	831	997	900	800	800
Kuwait	376	388	436	400	400	400
Libya	183	573	681	700	700	700
Mexico	144	47	108	100	125	125
Morocco	536	147	471	300	200	200
Peru	97	103	87	125	100	100
Saudi Arabia	8,600	10,200	8,500	7,500	7,500	7,000
Tunisia	218	764	456	500	400	400
United Arab Emirates	524	541	468	400	400	400
Uruguay	77	252	126	200	125	125
Others	1,646	1,426	1,618	1,292	1,000	975
<b>Subtotal</b>	<b>20,406</b>	<b>21,208</b>	<b>23,051</b>	<b>26,717</b>	<b>23,450</b>	<b>22,825</b>
<b>Unaccounted</b>	<b>520</b>	<b>491</b>	<b>299</b>	<b>2,668</b>	<b>2,035</b>	<b>1,960</b>
<b>United States</b>	<b>470</b>	<b>431</b>	<b>522</b>	<b>450</b>	<b>500</b>	<b>500</b>
<b>World Total</b>	<b>21,396</b>	<b>22,130</b>	<b>23,872</b>	<b>29,835</b>	<b>25,985</b>	<b>25,285</b>

TY=Trade Year, see Endnotes.

**World Barley Production, Consumption, and Stocks**  
**Local Marketing Years, Thousand Metric Tons**

	2011/12	2012/13	2013/14	2014/15	2015/16 Sep	2015/16 Oct
<b>Production</b>						
Algeria	1,350	1,500	1,500	1,300	1,300	1,300
Argentina	4,500	5,000	4,750	2,900	3,400	3,400
Australia	8,221	7,472	9,174	8,014	8,700	8,900
Belarus	1,979	1,917	1,674	2,250	2,000	2,000
Canada	7,892	8,012	10,237	7,119	7,300	7,600
China	1,637	1,626	1,500	1,500	1,500	1,500
Ethiopia	1,592	1,782	2,053	2,100	2,040	1,900
European Union	51,883	54,875	59,722	60,470	58,571	59,806
India	1,660	1,620	1,750	1,830	1,600	1,600
Iran	2,900	2,770	2,800	3,200	3,300	3,300
Kazakhstan	2,593	1,500	2,539	2,412	2,600	2,600
Morocco	2,340	1,200	2,700	1,700	3,500	3,500
Russia	16,938	13,952	15,389	20,026	19,500	17,500
Turkey	7,000	5,500	7,300	4,000	7,400	7,400
Ukraine	9,098	6,935	7,561	9,450	8,600	8,600
Others	8,611	8,753	9,207	8,944	8,876	9,038
<b>Subtotal</b>	130,194	124,414	139,856	137,215	140,187	139,944
<b>United States</b>	3,370	4,768	4,719	3,953	4,565	4,666
<b>World Total</b>	133,564	129,182	144,575	141,168	144,752	144,610
<b>Total Consumption</b>						
Algeria	1,800	2,000	2,050	2,050	2,050	2,050
Argentina	1,200	1,300	1,600	1,500	1,600	1,500
Australia	3,300	3,000	2,800	2,600	2,600	2,600
Belarus	2,100	2,000	1,800	2,100	2,200	2,200
Canada	6,916	6,809	7,720	6,426	6,200	6,200
China	3,800	4,000	6,300	10,500	8,400	8,400
Ethiopia	1,600	1,725	2,000	2,100	2,150	2,025
European Union	51,200	51,000	53,400	51,100	51,500	52,700
Iran	4,100	4,300	4,500	4,600	4,800	4,800
Kazakhstan	1,825	1,375	2,000	1,900	2,100	2,100
Morocco	3,100	1,900	2,300	2,700	3,000	3,000
Russia	14,300	12,100	12,700	14,100	14,000	13,500
Saudi Arabia	7,225	8,325	8,625	8,125	8,025	8,025
Turkey	6,750	6,200	6,950	5,350	6,900	6,900
Ukraine	6,300	5,100	5,000	4,500	4,500	4,500
Others	15,778	16,117	16,744	16,616	16,433	16,583
<b>Subtotal</b>	131,030	126,772	136,308	137,001	139,985	140,535
<b>United States</b>	4,170	4,638	4,775	4,234	4,636	4,420
<b>World Total</b>	135,200	131,410	141,083	141,235	144,621	144,955
<b>Ending Stocks</b>						
Algeria	1,458	1,217	1,178	1,304	1,228	1,154
Canada	1,195	983	1,950	1,217	1,317	1,217
European Union	6,069	5,071	5,696	5,607	5,229	5,413
Iran	1,348	1,418	618	1,418	1,418	1,418
Morocco	775	189	976	376	1,076	1,076
Russia	848	726	932	1,622	2,222	1,222
Saudi Arabia	2,814	3,006	3,396	3,486	2,976	2,976
Others	6,879	6,104	7,419	7,148	6,779	7,003
<b>Subtotal</b>	21,386	18,714	22,165	22,178	22,245	21,479
<b>United States</b>	1,306	1,750	1,791	1,711	1,749	2,065
<b>World Total</b>	22,692	20,464	23,956	23,889	23,994	23,544



## Regional Barley Imports, Production, Consumption, and Stocks

Thousand Metric Tons

	2011/12	2012/13	2013/14	2014/15	Sep 2015/16	Oct 2015/16
<b>TY Imports</b>						
North America	620	499	639	675	825	725
South America	851	1,064	887	1,060	985	985
European Union - 28	364	52	58	225	100	100
Other Europe	209	127	163	130	160	160
Former Soviet Union - 12	697	375	362	337	320	320
Middle East	12,543	13,906	12,537	12,010	11,160	10,660
North Africa	1,482	1,885	2,433	2,300	1,950	1,950
Sub-Saharan Africa	100	52	116	105	90	65
East Asia	3,924	3,663	6,320	10,275	8,325	8,325
South Asia	67	7	12	15	10	10
Oceania	19	9	46	35	25	25
<b>Total</b>	<b>20,876</b>	<b>21,639</b>	<b>23,573</b>	<b>27,167</b>	<b>23,950</b>	<b>23,325</b>
<b>Production</b>						
North America	11,749	13,812	15,506	11,622	12,450	12,851
South America	5,530	6,084	5,880	3,922	4,500	4,500
European Union - 28	51,883	54,875	59,722	60,470	58,571	59,806
Other Europe	1,189	1,188	1,151	1,270	1,287	1,287
Former Soviet Union - 12	32,227	25,958	29,153	35,763	34,425	32,550
Middle East	11,705	9,689	12,070	8,648	12,348	12,348
North Africa	4,410	3,306	4,725	4,109	5,409	5,409
Sub-Saharan Africa	2,099	2,283	2,521	2,602	2,550	2,447
East Asia	1,962	1,920	1,800	1,801	1,790	1,790
South Asia	2,272	2,156	2,457	2,537	2,307	2,307
Oceania	8,538	7,911	9,590	8,424	9,115	9,315
<b>Total</b>	<b>133,564</b>	<b>129,182</b>	<b>144,575</b>	<b>141,168</b>	<b>144,752</b>	<b>144,610</b>
<b>Domestic Consumption</b>						
North America	11,786	12,347	13,195	11,360	11,536	11,320
South America	3,077	3,327	3,553	3,485	3,640	3,540
European Union - 28	51,200	51,000	53,400	51,100	51,500	52,700
Other Europe	1,366	1,298	1,298	1,389	1,422	1,422
Former Soviet Union - 12	26,268	22,339	23,451	24,505	24,755	24,380
Middle East	22,016	22,435	24,410	21,896	23,506	23,506
North Africa	6,186	5,560	6,230	6,859	6,958	6,958
Sub-Saharan Africa	2,133	2,285	2,555	2,640	2,715	2,615
East Asia	5,580	5,806	8,009	12,105	10,000	10,000
South Asia	2,202	2,067	1,913	2,112	2,012	2,012
Oceania	3,650	3,425	3,250	3,050	3,050	3,050
<b>Total</b>	<b>135,464</b>	<b>131,889</b>	<b>141,264</b>	<b>140,501</b>	<b>141,094</b>	<b>141,503</b>
<b>Ending Stocks</b>						
North America	2,621	3,014	3,980	3,117	3,265	3,481
South America	547	685	963	877	797	797
European Union - 28	6,069	5,071	5,696	5,607	5,229	5,413
Other Europe	205	223	208	196	196	196
Former Soviet Union - 12	2,760	2,193	2,554	3,847	3,825	2,827
Middle East	5,940	5,736	5,811	5,981	5,958	5,958
North Africa	2,449	1,740	2,482	2,159	2,634	2,560
Sub-Saharan Africa	283	330	408	475	350	372
East Asia	961	737	848	819	934	934
South Asia	281	144	255	246	151	151
Oceania	576	591	751	565	655	855
<b>Total</b>	<b>22,692</b>	<b>20,464</b>	<b>23,956</b>	<b>23,889</b>	<b>23,994</b>	<b>23,544</b>

NOTES: Regional definitions appear on last page of this circular. Imports are reported on a trade year basis. All other data are reported using local marketing years.

**World Sorghum Trade**  
**October/September Year, Thousand Metric Tons**

	2011/12	2012/13	2013/14	2014/15	2015/16 Sep	2015/16 Oct
<b>TY Exports</b>						
Argentina	2,163	3,059	953	1,000	1,500	1,500
Australia	1,185	1,425	405	1,700	900	900
China	36	27	11	25	25	25
India	132	231	89	50	100	100
Kenya	16	32	51	40	25	30
Nigeria	75	50	50	100	50	50
Ukraine	113	124	229	150	150	150
Others	180	209	240	187	155	130
<b>Subtotal</b>	3,900	5,157	2,028	3,252	2,905	2,885
<b>United States</b>	1,549	2,136	5,717	9,200	11,000	11,000
<b>World Total</b>	5,449	7,293	7,745	12,452	13,905	13,885
<b>TY Imports</b>						
Chile	544	404	109	100	100	100
China	84	631	4,161	10,000	11,000	11,000
Colombia	592	591	104	50	50	50
Ethiopia	30	50	50	75	50	50
European Union	126	291	186	130	100	100
Japan	1,481	1,897	1,003	900	1,000	1,000
Kenya	74	102	94	100	100	100
Mexico	1,369	1,793	162	50	50	50
South Sudan	13	6	125	75	10	50
Sudan	125	175	75	75	75	75
Others	650	674	685	307	305	305
<b>Subtotal</b>	5,088	6,614	6,754	11,862	12,840	12,880
<b>Unaccounted</b>	358	436	988	582	1,065	1,005
<b>United States</b>	3	243	3	8	0	0
<b>World Total</b>	5,449	7,293	7,745	12,452	13,905	13,885

TY=Trade Year, see Endnotes.

**World Sorghum Production, Consumption, and Stocks**  
**Local Marketing Years, Thousand Metric Tons**

	2011/12	2012/13	2013/14	2014/15	2015/16 Sep	2015/16 Oct
<b>Production</b>						
Argentina	4,200	4,700	4,400	3,500	4,500	4,500
Australia	2,239	2,230	1,282	2,104	2,100	2,100
Brazil	2,222	2,102	1,890	2,000	2,000	2,000
Burkina	1,500	1,924	1,880	1,836	1,900	1,900
Cameroon	1,150	1,100	1,150	1,150	1,150	1,150
Chad	648	1,172	745	900	900	900
China	2,051	2,556	2,700	2,600	2,600	2,600
Ethiopia	3,951	3,604	4,114	4,000	4,000	3,800
India	6,030	5,300	5,540	5,050	5,500	5,500
Mali	1,191	1,212	820	1,300	1,300	1,300
Mexico	6,425	6,174	8,500	6,686	7,800	7,800
Niger	807	1,376	1,287	1,000	1,100	1,100
Nigeria	6,900	5,943	6,592	6,700	6,150	6,150
Sudan	4,605	4,524	2,249	6,281	5,500	5,500
Tanzania	807	839	832	840	840	840
Others	7,131	6,675	7,036	6,765	7,082	6,817
<b>Subtotal</b>	<b>51,857</b>	<b>51,431</b>	<b>51,017</b>	<b>52,712</b>	<b>54,422</b>	<b>53,957</b>
<b>United States</b>	<b>5,410</b>	<b>6,293</b>	<b>9,966</b>	<b>10,988</b>	<b>14,590</b>	<b>14,569</b>
<b>World Total</b>	<b>57,267</b>	<b>57,724</b>	<b>60,983</b>	<b>63,700</b>	<b>69,012</b>	<b>68,526</b>
<b>Total Consumption</b>						
Argentina	1,900	2,300	2,700	2,800	2,900	2,900
Australia	1,105	1,105	905	605	1,205	1,205
Brazil	2,175	2,300	2,000	2,000	1,900	1,900
Burkina	1,500	1,900	1,900	1,800	1,900	1,900
Cameroon	1,175	1,110	1,165	1,175	1,175	1,175
Chad	650	1,150	850	900	900	900
China	2,200	3,200	6,800	12,600	13,400	13,400
Ethiopia	3,700	3,700	4,200	4,100	4,100	3,900
India	6,000	5,150	5,200	5,100	5,350	5,350
Japan	1,475	1,900	1,000	900	1,000	1,000
Mali	1,300	1,200	950	1,200	1,300	1,300
Mexico	8,100	8,100	8,300	6,800	7,700	7,700
Niger	950	1,200	1,300	1,100	1,100	1,100
Nigeria	6,800	5,900	6,550	6,650	6,050	6,050
Sudan	4,500	4,700	2,550	6,000	5,800	5,800
Others	9,547	9,098	8,478	8,210	8,288	8,056
<b>Subtotal</b>	<b>54,561</b>	<b>52,816</b>	<b>55,918</b>	<b>62,043</b>	<b>65,131</b>	<b>64,664</b>
<b>United States</b>	<b>3,916</b>	<b>4,796</b>	<b>4,127</b>	<b>2,429</b>	<b>3,048</b>	<b>3,048</b>
<b>World Total</b>	<b>58,477</b>	<b>57,612</b>	<b>60,045</b>	<b>64,472</b>	<b>68,179</b>	<b>67,712</b>
<b>Ending Stocks</b>						
Argentina	164	781	1,202	802	702	802
Brazil	472	272	151	141	231	231
China	366	326	376	351	526	526
India	223	145	398	298	348	348
Mexico	418	285	647	576	726	726
Nigeria	215	208	200	150	200	200
Sudan	609	588	357	708	478	478
Others	1,632	1,804	1,537	1,466	1,418	1,397
<b>Subtotal</b>	<b>4,099</b>	<b>4,409</b>	<b>4,868</b>	<b>4,492</b>	<b>4,629</b>	<b>4,708</b>
<b>United States</b>	<b>583</b>	<b>385</b>	<b>864</b>	<b>468</b>	<b>1,045</b>	<b>1,066</b>
<b>World Total</b>	<b>4,682</b>	<b>4,794</b>	<b>5,732</b>	<b>4,960</b>	<b>5,674</b>	<b>5,774</b>

## Regional Sorghum Imports, Production, Consumption, and Stocks

Thousand Metric Tons

	2011/12	2012/13	2013/14	2014/15	Sep 2015/16	Oct 2015/16
<b>TY Imports</b>						
North America	1,372	2,036	165	58	50	50
South America	1,199	1,071	239	185	185	185
European Union - 28	126	291	186	130	100	100
Other Europe	0	0	0	0	0	0
Middle East	101	194	231	50	50	50
North Africa	54	0	41	5	5	5
Sub-Saharan Africa	557	586	557	457	365	405
East Asia	1,655	2,650	5,281	10,955	12,055	12,055
Southeast Asia	13	18	41	15	15	15
Others	14	11	16	15	15	15
<b>Total</b>	<b>5,091</b>	<b>6,857</b>	<b>6,757</b>	<b>11,870</b>	<b>12,840</b>	<b>12,880</b>
<b>Production</b>						
North America	11,835	12,467	18,466	17,674	22,390	22,369
Central America	312	339	335	335	335	335
Caribbean	92	92	94	94	94	94
South America	7,246	7,495	7,081	6,432	7,422	7,422
European Union - 28	671	473	703	878	760	747
Middle East	764	814	789	692	635	635
North Africa	847	763	755	756	756	756
Sub-Saharan Africa	24,802	24,783	22,782	26,701	26,041	25,589
East Asia	2,054	2,560	2,704	2,604	2,604	2,604
South Asia	6,175	5,445	5,685	5,195	5,645	5,645
Southeast Asia	54	55	57	55	55	55
Oceania	2,239	2,230	1,282	2,104	2,100	2,100
Others	176	208	250	180	175	175
<b>Total</b>	<b>57,267</b>	<b>57,724</b>	<b>60,983</b>	<b>63,700</b>	<b>69,012</b>	<b>68,526</b>
<b>Domestic Consumption</b>						
North America	12,016	12,896	12,427	9,229	10,748	10,748
Central America	320	325	325	330	340	340
Caribbean	92	92	94	94	94	94
South America	6,104	6,076	5,789	5,872	5,897	5,897
European Union - 28	760	795	880	995	850	845
Middle East	789	1,052	894	879	685	685
North Africa	908	756	794	756	756	756
Sub-Saharan Africa	24,850	25,038	23,500	26,669	26,476	26,049
East Asia	3,771	5,221	7,921	13,560	14,460	14,460
South Asia	6,155	5,305	5,360	5,260	5,510	5,510
Southeast Asia	68	68	61	90	65	65
Oceania	1,105	1,105	905	605	1,205	1,205
Others	55	80	25	30	30	30
<b>Total</b>	<b>56,993</b>	<b>58,809</b>	<b>58,975</b>	<b>64,369</b>	<b>67,116</b>	<b>66,684</b>
<b>Ending Stocks</b>						
North America	1,001	670	1,511	1,044	1,771	1,792
Central America	23	29	32	32	22	22
South America	717	1,145	1,426	1,026	991	1,091
European Union - 28	14	5	19	19	34	16
Middle East	56	65	47	35	35	35
North Africa	60	66	68	73	78	78
Sub-Saharan Africa	1,890	2,037	1,557	1,786	1,584	1,581
East Asia	451	413	466	440	614	614
South Asia	223	145	398	298	348	348
Oceania	230	195	187	186	181	181
Others	17	24	21	21	16	16
<b>Total</b>	<b>4,682</b>	<b>4,794</b>	<b>5,732</b>	<b>4,960</b>	<b>5,674</b>	<b>5,774</b>

NOTES: Regional definitions appear on last page of this circular. Imports are reported on a trade year basis. All other data are reported using local marketing years.

**World Oats Trade**  
**October/September Year, Thousand Metric Tons**

	2011/12	2012/13	2013/14	2014/15	2015/16 Sep	2015/16 Oct
<b>TY Exports</b>						
Argentina	13	2	2	5	5	5
Australia	174	240	270	250	350	350
Canada	1,763	1,351	1,732	1,700	1,600	1,600
Chile	106	42	48	100	100	100
European Union	176	126	291	225	150	150
Russia	18	4	6	10	10	10
Ukraine	2	2	6	25	10	10
Others	7	10	14	10	10	10
<b>Subtotal</b>	2,259	1,777	2,369	2,325	2,235	2,235
<b>United States</b>	28	18	29	25	30	30
<b>World Total</b>	2,287	1,795	2,398	2,350	2,265	2,265
<b>TY Imports</b>						
Algeria	9	7	12	10	10	10
Bosnia and Herzegovina	3	2	3	5	5	5
Canada	11	9	26	10	10	10
China	68	87	116	150	250	250
Colombia	1	1	2	5	5	5
Ecuador	22	19	21	20	20	20
European Union	3	4	3	5	5	5
Japan	54	51	46	50	50	50
Mexico	134	111	93	100	100	100
Norway	49	36	38	40	40	40
Serbia	2	2	2	5	5	5
South Africa	11	11	19	50	25	25
Switzerland	56	44	51	50	50	50
Turkey	4	0	0	5	5	5
Uruguay	8	6	6	5	5	5
Others	7	0	1	0	0	0
<b>Subtotal</b>	442	390	439	510	585	585
<b>Unaccounted</b>	115	50	93	90	80	80
<b>United States</b>	1,730	1,355	1,866	1,750	1,600	1,600
<b>World Total</b>	2,287	1,795	2,398	2,350	2,265	2,265

TY=Trade Year, see Endnotes.

**World Oats Production, Consumption, and Stocks**  
**Local Marketing Years, Thousand Metric Tons**

	2011/12	2012/13	2013/14	2014/15	2015/16 Sep	2015/16 Oct
<b>Production</b>						
Algeria	67	110	110	110	110	110
Argentina	345	496	445	525	485	485
Australia	1,262	1,121	1,255	1,096	1,300	1,300
Belarus	448	422	352	470	400	400
Brazil	354	361	380	300	300	300
Canada	3,158	2,830	3,906	2,979	3,310	3,310
Chile	451	680	610	500	760	760
China	600	600	580	600	600	600
European Union	7,927	7,909	8,392	7,848	7,531	7,443
Kazakhstan	258	200	305	226	250	250
Mexico	51	84	90	90	90	90
Norway	231	232	214	236	236	236
Russia	5,332	4,027	4,932	5,267	5,000	5,000
Turkey	218	210	210	210	210	210
Ukraine	506	630	467	610	450	450
Others	372	315	328	313	337	337
<b>Subtotal</b>	<b>21,580</b>	<b>20,227</b>	<b>22,576</b>	<b>21,380</b>	<b>21,369</b>	<b>21,281</b>
<b>United States</b>	<b>728</b>	<b>892</b>	<b>938</b>	<b>1,019</b>	<b>1,240</b>	<b>1,300</b>
<b>World Total</b>	<b>22,308</b>	<b>21,119</b>	<b>23,514</b>	<b>22,399</b>	<b>22,609</b>	<b>22,581</b>
<b>Total Consumption</b>						
Algeria	75	119	118	125	120	120
Argentina	350	500	425	525	500	500
Australia	1,100	925	950	875	900	900
Belarus	450	400	375	450	400	400
Brazil	350	350	375	300	290	290
Canada	1,361	1,592	1,660	1,687	1,650	1,650
Chile	325	575	575	450	650	650
China	625	675	700	750	875	875
European Union	7,800	7,700	8,075	7,675	7,575	7,475
Kazakhstan	225	225	275	225	250	250
Mexico	185	195	185	190	190	190
Norway	270	295	245	270	270	270
Russia	5,000	4,300	4,900	5,200	5,100	5,100
Turkey	215	215	215	215	215	215
Ukraine	500	600	475	600	450	450
Others	519	451	497	499	502	502
<b>Subtotal</b>	<b>19,589</b>	<b>19,214</b>	<b>20,265</b>	<b>19,952</b>	<b>19,979</b>	<b>19,879</b>
<b>United States</b>	<b>2,499</b>	<b>2,743</b>	<b>2,757</b>	<b>2,424</b>	<b>2,755</b>	<b>2,828</b>
<b>World Total</b>	<b>22,088</b>	<b>21,957</b>	<b>23,022</b>	<b>22,376</b>	<b>22,734</b>	<b>22,707</b>
<b>Ending Stocks</b>						
Argentina	55	49	67	62	42	42
Australia	134	60	105	76	126	126
Canada	805	446	1,054	681	751	751
Chile	23	62	46	35	45	45
China	127	139	135	135	110	110
European Union	795	901	906	864	726	687
Russia	485	203	229	286	176	176
Others	225	221	199	204	200	200
<b>Subtotal</b>	<b>2,649</b>	<b>2,081</b>	<b>2,741</b>	<b>2,343</b>	<b>2,176</b>	<b>2,137</b>
<b>United States</b>	<b>797</b>	<b>527</b>	<b>359</b>	<b>780</b>	<b>873</b>	<b>860</b>
<b>World Total</b>	<b>3,446</b>	<b>2,608</b>	<b>3,100</b>	<b>3,123</b>	<b>3,049</b>	<b>2,997</b>

## Regional Oats Imports, Production, Consumption, and Stocks

Thousand Metric Tons

	2011/12	2012/13	2013/14	2014/15	Sep 2015/16	Oct 2015/16
<b>TY Imports</b>						
North America	1,875	1,475	1,985	1,860	1,710	1,710
South America	31	26	29	30	30	30
European Union - 28	3	4	3	5	5	5
Other Europe	110	84	94	100	100	100
Former Soviet Union - 12	7	0	1	0	0	0
Middle East	4	0	0	5	5	5
North Africa	9	7	12	10	10	10
Sub-Saharan Africa	11	11	19	50	25	25
East Asia	122	138	162	200	300	300
Oceania	0	0	0	0	0	0
<b>Total</b>	<b>2,172</b>	<b>1,745</b>	<b>2,305</b>	<b>2,260</b>	<b>2,185</b>	<b>2,185</b>
<b>Production</b>						
North America	3,937	3,806	4,934	4,088	4,640	4,700
South America	1,191	1,577	1,478	1,350	1,592	1,592
European Union - 28	7,927	7,909	8,392	7,848	7,531	7,443
Other Europe	373	365	348	369	372	372
Former Soviet Union - 12	6,549	5,285	6,062	6,579	6,106	6,106
Middle East	218	210	210	210	210	210
North Africa	163	166	166	166	166	166
Sub-Saharan Africa	57	60	59	55	55	55
East Asia	602	602	582	602	601	601
Oceania	1,291	1,139	1,283	1,132	1,336	1,336
<b>Total</b>	<b>22,308</b>	<b>21,119</b>	<b>23,514</b>	<b>22,399</b>	<b>22,609</b>	<b>22,581</b>
<b>Domestic Consumption</b>						
North America	4,045	4,530	4,602	4,301	4,595	4,668
South America	1,092	1,490	1,452	1,330	1,517	1,517
European Union - 28	7,800	7,700	8,075	7,675	7,575	7,475
Other Europe	478	474	429	461	467	467
Former Soviet Union - 12	6,180	5,531	6,032	6,481	6,206	6,206
Middle East	215	215	215	215	215	215
North Africa	172	175	174	181	176	176
Sub-Saharan Africa	53	72	95	105	80	80
East Asia	685	730	750	800	925	925
Oceania	1,129	943	978	911	936	936
<b>Total</b>	<b>21,849</b>	<b>21,860</b>	<b>22,802</b>	<b>22,460</b>	<b>22,692</b>	<b>22,665</b>
<b>Ending Stocks</b>						
North America	1,605	974	1,416	1,464	1,627	1,614
South America	91	129	130	109	104	104
European Union - 28	795	901	906	864	726	687
Other Europe	48	27	41	48	53	53
Former Soviet Union - 12	592	332	345	403	278	278
Middle East	17	12	7	7	7	7
North Africa	1	1	1	1	1	1
Sub-Saharan Africa	29	28	11	11	11	11
East Asia	134	144	138	140	116	116
Oceania	134	60	105	76	126	126
<b>Total</b>	<b>3,446</b>	<b>2,608</b>	<b>3,100</b>	<b>3,123</b>	<b>3,049</b>	<b>2,997</b>

NOTES: Regional definitions appear on last page of this circular. Imports are reported on a trade year basis. All other data are reported using local marketing years.

**World Rye Trade**  
**October/September Year, Thousand Metric Tons**

	2011/12	2012/13	2013/14	2014/15	2015/16 Sep	2015/16 Oct
<b>TY Exports</b>						
Belarus	25	25	5	5	5	5
Canada	159	178	97	85	100	100
European Union	59	122	201	175	150	150
Russia	284	78	83	110	100	100
Ukraine	9	16	59	25	20	20
Others	4	0	0	0	0	0
<b>Subtotal</b>	540	419	445	400	375	375
<b>United States</b>	8	7	6	5	5	5
<b>World Total</b>	548	426	451	405	380	380
<b>TY Imports</b>						
European Union	302	68	96	90	50	50
Israel	11	34	33	25	25	25
Japan	46	27	37	25	40	25
Korea, South	11	12	8	10	10	10
Norway	11	21	16	15	15	15
Russia	0	25	5	5	5	5
Switzerland	2	9	6	5	5	5
Others	9	2	1	5	0	0
<b>Subtotal</b>	392	198	202	180	150	135
<b>Unaccounted</b>	-18	7	45	0	30	45
<b>United States</b>	174	221	204	225	200	200
<b>World Total</b>	548	426	451	405	380	380

TY=Trade Year, see Endnotes.



**World Rye Production, Consumption, and Stocks**  
**Local Marketing Years, Thousand Metric Tons**

	2011/12	2012/13	2013/14	2014/15	2015/16 Sep	2015/16 Oct
<b>Production</b>						
Belarus	801	1,082	648	950	800	800
Canada	241	337	223	218	230	230
Chile	59	62	60	47	71	71
European Union	6,900	8,763	10,157	8,854	8,373	7,483
Russia	2,967	2,132	3,360	3,279	3,300	3,300
Turkey	366	370	350	350	350	350
Ukraine	579	676	638	475	350	350
Others	181	182	174	236	185	185
<b>Subtotal</b>	12,094	13,604	15,610	14,409	13,659	12,769
<b>United States</b>	154	166	194	183	217	292
<b>World Total</b>	12,248	13,770	15,804	14,592	13,876	13,061
<b>Total Consumption</b>						
Argentina	45	40	52	97	56	56
Belarus	750	1,000	650	950	800	800
Canada	101	127	107	134	123	123
Chile	59	62	60	47	71	71
European Union	7,400	8,700	9,650	8,900	8,600	7,800
Kazakhstan	30	50	40	65	50	50
Norway	27	26	28	27	27	27
Russia	2,850	2,000	3,100	3,250	3,200	3,200
Turkey	375	375	350	350	350	350
Ukraine	625	625	625	475	375	375
Others	171	169	156	131	147	132
<b>Subtotal</b>	12,404	13,204	14,823	14,414	13,801	13,014
<b>United States</b>	311	387	424	406	444	467
<b>World Total</b>	12,715	13,591	15,247	14,820	14,245	13,481
<b>Ending Stocks</b>						
Belarus	110	167	160	155	150	150
Canada	25	46	44	42	49	49
European Union	747	795	1,210	1,082	799	665
Japan	5	7	4	4	4	4
Russia	129	153	345	265	274	270
Turkey	24	18	18	23	23	23
Ukraine	132	166	128	106	53	61
Others	3	3	6	2	2	2
<b>Subtotal</b>	1,175	1,355	1,915	1,679	1,354	1,224
<b>United States</b>	11	10	7	15	11	50
<b>World Total</b>	1,186	1,365	1,922	1,694	1,365	1,274

## Regional Rye Imports, Production, Consumption, and Stocks

Thousand Metric Tons

	2011/12	2012/13	2013/14	2014/15	Sep 2015/16	Oct 2015/16
<b>TY Imports</b>						
North America	174	221	204	225	200	200
South America	0	0	0	0	0	0
European Union - 28	302	68	96	90	50	50
Other Europe	14	32	23	20	20	20
Former Soviet Union - 12	5	25	5	5	5	5
Middle East	14	34	33	30	25	25
Sub-Saharan Africa	0	0	0	0	0	0
East Asia	57	39	45	35	50	35
Oceania	0	0	0	0	0	0
<b>Total</b>	<b>566</b>	<b>419</b>	<b>406</b>	<b>405</b>	<b>350</b>	<b>335</b>
<b>Production</b>						
North America	395	503	417	401	447	522
South America	107	105	115	147	130	130
European Union - 28	6,900	8,763	10,157	8,854	8,373	7,483
Other Europe	62	46	53	52	51	51
Former Soviet Union - 12	4,375	3,940	4,689	4,765	4,500	4,500
Middle East	366	370	350	350	350	350
Sub-Saharan Africa	3	3	3	3	3	3
East Asia	0	0	0	0	0	0
Oceania	40	40	20	20	22	22
<b>Total</b>	<b>12,248</b>	<b>13,770</b>	<b>15,804</b>	<b>14,592</b>	<b>13,876</b>	<b>13,061</b>
<b>Domestic Consumption</b>						
North America	412	514	531	540	567	590
South America	107	105	115	147	130	130
European Union - 28	7,400	8,700	9,650	8,900	8,600	7,800
Other Europe	76	78	77	72	71	71
Former Soviet Union - 12	4,255	3,675	4,415	4,740	4,425	4,425
Middle East	386	409	383	375	375	375
Sub-Saharan Africa	2	3	3	3	3	3
East Asia	66	37	48	35	50	35
Oceania	40	40	20	20	22	22
<b>Total</b>	<b>12,744</b>	<b>13,561</b>	<b>15,242</b>	<b>14,832</b>	<b>14,243</b>	<b>13,451</b>
<b>Ending Stocks</b>						
North America	36	56	51	57	60	99
South America	0	0	0	0	0	0
European Union - 28	747	795	1,210	1,082	799	665
Other Europe	0	0	0	0	0	0
Former Soviet Union - 12	374	489	639	528	479	483
Middle East	24	18	18	23	23	23
Sub-Saharan Africa	0	0	0	0	0	0
East Asia	5	7	4	4	4	4
Oceania	0	0	0	0	0	0
<b>Total</b>	<b>1,186</b>	<b>1,365</b>	<b>1,922</b>	<b>1,694</b>	<b>1,365</b>	<b>1,274</b>

NOTES: Regional definitions appear on last page of this circular. Imports are reported on a trade year basis. All other data are reported using local marketing years.



# HISTORICAL DATA SERIES FOR SELECTED REGIONS AND COUNTRIES

---

## CONTENTS

European Union: Grain Supply and Demand .....	36
China: Grain Supply and Demand .....	37
Other Europe: Grain Supply and Demand .....	38
Former Soviet Union: Grain Supply and Demand.....	39
Wheat Supply and Disappearance: Selected Exporters .....	43
Corn Supply and Disappearance: Selected Exporters.....	45
Barley Supply and Disappearance: Selected Exporters .....	47
Sorghum Supply and Disappearance: Selected Exporters .....	48
U.S. Grains: Supply and Distribution.....	49
Total Wheat and Coarse Grains: Supply and Demand .....	50
World Wheat and Coarse Grains: Supply and Demand .....	51
World Corn and Barley: Supply and Demand .....	52
World Rice: Supply and Demand .....	53

**European Union: Grain Supply and Demand**

**Wheat and Coarse Grains Millions of Metric Tons/Hectares**

	<b>Area Harvested</b>	<b>Yield</b>	<b>Production</b>	<b>Imports</b>	<b>Exports</b>	<b>Feed Dom.</b>	<b>Domestic Consumption</b>	<b>Ending Stocks</b>
<b>Wheat</b>								
2004/05	26.2	5.6	147.7	7.1	14.7	59.3	123.9	28.3
2005/06	26.0	5.1	132.9	6.8	15.7	63.0	128.2	24.1
2006/07	24.7	5.1	125.7	5.2	13.9	60.2	126.2	14.8
2007/08	24.9	4.9	120.8	6.8	12.4	52.4	117.2	12.8
2008/09	26.8	5.7	151.9	7.7	25.4	60.5	127.6	19.4
2009/10	26.0	5.4	139.7	5.4	22.3	57.5	125.6	16.6
2010/11	26.0	5.3	136.7	4.6	23.1	52.5	122.8	11.9
2011/12	25.8	5.3	138.2	7.4	16.7	57.5	127.2	13.5
2012/13	26.0	5.2	133.9	5.3	22.8	51.0	119.3	10.7
2013/14	25.9	5.6	144.4	4.0	32.0	49.0	117.2	9.9
2014/15	26.8	5.8	156.5	6.0	35.4	54.5	123.9	13.1
2015/16	26.7	5.8	155.3	6.0	33.0	57.0	125.9	15.5
<b>Coarse Grains</b>								
2004/05	33.9	5.0	169.1	3.0	4.8	118.9	155.2	25.6
2005/06	33.2	4.5	149.5	2.7	4.3	112.4	150.7	22.8
2006/07	32.4	4.3	140.0	8.1	4.5	112.9	150.6	15.7
2007/08	32.6	4.3	138.7	20.3	4.5	121.6	157.1	13.1
2008/09	34.0	4.8	164.9	3.1	5.7	116.1	154.2	21.3
2009/10	32.9	4.8	157.6	2.9	3.0	114.8	152.4	26.3
2010/11	30.2	4.7	142.9	8.5	6.2	116.9	154.6	16.9
2011/12	30.2	5.0	149.9	7.0	6.5	113.2	151.5	15.7
2012/13	31.4	4.7	145.9	11.8	7.4	113.7	153.1	13.1
2013/14	31.4	5.1	159.0	16.2	8.6	122.4	164.1	15.6
2014/15	30.8	5.5	170.6	8.9	14.0	121.5	163.9	17.2
2015/16	30.3	4.9	149.3	16.4	8.8	118.8	161.3	12.8
<b>Wheat and Coarse Grains</b>								
2004/05	60.1	5.3	316.8	10.0	19.5	178.2	279.1	54.0
2005/06	59.1	4.8	282.3	9.4	20.0	175.4	278.9	46.9
2006/07	57.0	4.7	265.7	13.2	18.5	173.1	276.8	30.5
2007/08	57.5	4.5	259.5	27.1	16.9	174.1	274.2	25.9
2008/09	60.9	5.2	316.9	10.8	31.1	176.6	281.8	40.7
2009/10	58.9	5.0	297.3	8.2	25.3	172.3	278.0	42.9
2010/11	56.2	5.0	279.5	13.1	29.3	169.4	277.5	28.8
2011/12	56.0	5.1	288.1	14.3	23.3	170.7	278.7	29.3
2012/13	57.3	4.9	279.9	17.1	30.1	164.7	272.3	23.8
2013/14	57.3	5.3	303.4	20.2	40.7	171.4	281.3	25.4
2014/15	57.6	5.7	327.1	14.9	49.4	176.0	287.8	30.3
2015/16	56.9	5.3	304.6	22.4	41.8	175.8	287.2	28.3

**China: Grain Supply and Demand**

**Wheat and Coarse Grains Millions of Metric Tons/Hectares**

	<b>Area Harvested</b>	<b>Yield</b>	<b>Production</b>	<b>Imports</b>	<b>Exports</b>	<b>Feed Dom.</b>	<b>Domestic Consumption</b>	<b>Ending Stocks</b>
<b>Wheat</b>								
2004/05	21.6	4.3	92.0	6.7	1.2	4.0	102.0	38.8
2005/06	22.8	4.3	97.4	1.1	1.4	3.5	101.5	34.5
2006/07	23.6	4.6	108.5	0.4	2.8	4.0	102.0	38.6
2007/08	23.7	4.6	109.3	0.0	2.8	8.0	106.0	39.1
2008/09	23.6	4.8	112.5	0.5	0.7	8.0	105.5	45.8
2009/10	24.3	4.7	115.1	1.4	0.9	10.0	107.0	54.4
2010/11	24.3	4.7	115.2	0.9	0.9	13.0	110.5	59.1
2011/12	24.3	4.8	117.4	2.9	1.0	24.0	122.5	55.9
2012/13	24.3	5.0	121.0	3.0	1.0	25.0	125.0	54.0
2013/14	24.1	5.1	121.9	6.8	0.9	16.0	116.5	65.3
2014/15	24.1	5.2	126.2	1.9	0.8	17.0	118.0	74.6
2015/16	24.2	5.4	130.0	2.5	1.0	15.0	116.5	89.6
<b>Coarse Grains</b>								
2004/05	28.0	4.9	138.3	2.1	7.6	100.3	141.1	37.6
2005/06	28.8	5.1	147.8	2.3	3.8	103.5	147.1	36.9
2006/07	31.1	5.1	159.0	1.2	5.5	105.0	153.5	38.0
2007/08	31.9	5.0	159.2	1.2	0.9	106.7	157.9	39.5
2008/09	32.2	5.4	172.4	1.7	0.2	109.1	161.2	52.2
2009/10	33.4	5.1	169.8	3.8	0.2	119.1	173.3	52.3
2010/11	34.6	5.3	183.8	2.7	0.2	128.8	188.4	50.1
2011/12	35.5	5.6	198.6	7.9	0.1	132.0	196.2	60.4
2012/13	37.1	5.7	212.2	5.6	0.1	146.1	209.7	68.4
2013/14	38.4	5.9	225.1	12.4	0.0	161.8	227.6	78.3
2014/15	39.1	5.7	222.2	24.9	0.1	174.6	242.7	82.6
2015/16	39.8	5.8	231.5	21.3	0.1	173.1	243.5	91.8
<b>Wheat and Coarse Grains</b>								
2004/05	49.6	4.6	230.2	8.8	8.8	104.3	243.1	76.4
2005/06	51.6	4.8	245.3	3.4	5.2	107.0	248.6	71.4
2006/07	54.7	4.9	267.4	1.5	8.2	109.0	255.5	76.6
2007/08	55.6	4.8	268.5	1.2	3.7	114.7	263.9	78.6
2008/09	55.8	5.1	284.9	2.1	0.9	117.1	266.7	98.0
2009/10	57.6	4.9	284.9	5.2	1.1	129.1	280.3	106.7
2010/11	58.9	5.1	299.0	3.6	1.1	141.8	298.9	109.2
2011/12	59.8	5.3	316.0	10.9	1.1	156.0	318.7	116.3
2012/13	61.3	5.4	333.2	8.6	1.1	171.1	334.7	122.3
2013/14	62.5	5.6	347.0	19.2	0.9	177.8	344.1	143.5
2014/15	63.1	5.5	348.3	26.8	0.9	191.6	360.7	157.1
2015/16	64.0	5.7	361.5	23.8	1.1	188.1	360.0	181.3

**Other Europe: Grain Supply and Demand**

**Wheat and Coarse Grains Millions of Metric Tons/Hectares**

	<b>Area Harvested</b>	<b>Yield</b>	<b>Production</b>	<b>Imports</b>	<b>Exports</b>	<b>Feed Dom.</b>	<b>Domestic Consumption</b>	<b>Ending Stocks</b>
<b>Wheat</b>								
2004/05	1.1	4.3	4.6	1.4	0.3	0.9	5.2	1.3
2005/06	1.0	3.8	3.8	1.4	0.2	0.9	5.1	1.1
2006/07	1.0	3.6	3.5	1.5	0.3	0.7	4.6	1.2
2007/08	1.0	3.8	3.7	1.9	0.5	1.0	4.8	1.5
2008/09	0.9	4.4	4.0	1.7	0.4	1.2	5.1	1.7
2009/10	1.0	3.9	3.8	1.7	0.5	1.0	4.9	1.7
2010/11	0.9	3.7	3.2	1.7	0.6	0.8	4.7	1.3
2011/12	0.9	4.2	3.6	1.9	0.5	1.0	4.9	1.5
2012/13	0.9	4.0	3.4	1.7	0.7	1.0	4.7	1.1
2013/14	0.9	4.4	4.1	1.9	1.3	1.1	4.8	1.1
2014/15	0.9	4.2	3.9	1.7	0.7	1.1	4.8	1.2
2015/16	1.0	4.3	4.1	1.9	1.1	1.1	4.9	1.3
<b>Coarse Grains</b>								
2004/05	2.1	5.0	10.4	0.5	0.6	8.4	9.5	1.5
2005/06	2.1	4.8	10.1	0.6	1.3	8.5	9.7	1.3
2006/07	2.0	4.9	9.8	0.8	0.9	8.5	9.6	1.3
2007/08	2.0	3.4	6.9	0.9	0.1	6.8	7.9	1.1
2008/09	2.1	4.6	9.7	0.6	1.5	7.6	8.7	1.1
2009/10	2.0	4.9	9.7	0.7	1.4	7.5	8.7	1.4
2010/11	2.0	5.0	10.0	0.7	2.0	7.3	8.7	1.5
2011/12	2.1	4.6	9.5	0.8	2.4	7.0	8.4	1.0
2012/13	2.1	3.2	6.6	0.7	0.6	5.9	7.1	0.6
2013/14	2.0	4.4	8.8	0.9	1.8	6.3	7.7	0.8
2014/15	1.9	5.5	10.7	0.9	3.0	6.6	8.0	1.3
2015/16	1.9	4.4	8.4	0.9	1.7	6.5	8.0	0.9
<b>Wheat and Coarse Grains</b>								
2004/05	3.2	4.8	15.1	1.9	0.9	9.3	14.8	2.8
2005/06	3.1	4.5	13.9	2.0	1.4	9.4	14.8	2.4
2006/07	3.0	4.5	13.3	2.3	1.2	9.2	14.2	2.5
2007/08	3.0	3.5	10.6	2.7	0.6	7.8	12.6	2.6
2008/09	3.0	4.6	13.7	2.3	1.9	8.8	13.8	2.8
2009/10	3.0	4.5	13.5	2.4	1.9	8.5	13.7	3.2
2010/11	2.9	4.6	13.2	2.4	2.6	8.1	13.4	2.7
2011/12	2.9	4.5	13.1	2.7	2.8	8.1	13.2	2.5
2012/13	2.9	3.4	10.0	2.4	1.3	7.0	11.8	1.8
2013/14	2.9	4.4	12.9	2.8	3.1	7.4	12.5	1.9
2014/15	2.9	5.1	14.6	2.6	3.7	7.7	12.8	2.5
2015/16	2.9	4.4	12.6	2.8	2.8	7.7	12.9	2.2

**Former Soviet Union: Grain Supply and Demand**  
**Wheat and Coarse Grains Millions of Metric Tons/Hectares**

	<b>Area Harvested</b>	<b>Yield</b>	<b>Production</b>	<b>Imports</b>	<b>Exports</b>	<b>Feed Dom.</b>	<b>Domestic Consumption</b>	<b>Ending Stocks</b>
<b>Wheat</b>								
2009/10	52.6	2.2	114.0	5.4	37.3	26.5	78.3	25.8
2010/11	45.8	1.8	81.0	5.5	13.9	24.4	75.7	22.7
2011/12	49.7	2.3	115.0	8.0	39.7	28.3	80.0	26.0
2012/13	44.0	1.8	77.8	7.2	25.4	21.5	71.7	13.9
2013/14	47.7	2.2	103.9	7.4	37.1	22.8	72.9	15.1
2014/15	46.6	2.4	112.7	7.7	40.2	24.6	75.8	19.5
2015/16	48.9	2.4	117.5	7.1	45.4	25.8	78.1	20.5
<b>Coarse Grains</b>								
2009/10	27.2	2.5	67.6	0.4	15.0	39.0	55.0	7.4
2010/11	21.9	2.2	47.5	1.2	8.8	28.4	41.8	5.5
2011/12	27.0	2.9	78.6	1.0	24.6	38.6	54.4	6.2
2012/13	27.5	2.5	68.2	0.7	19.9	35.6	50.2	5.0
2013/14	29.4	3.0	87.6	0.8	30.9	40.0	55.6	7.0
2014/15	30.3	3.0	91.5	0.8	33.7	41.8	58.0	7.6
2015/16	28.4	3.0	85.8	0.8	30.9	41.1	57.3	6.0

## Former Soviet Union: Grain Supply and Demand (Wheat)

Millions of Tons/Hectares

Country Mktg Year	Area Harvested	Yield	Production	MY Imports	MY Exports	Feed and Residual	Total Consumption	Ending Stocks
<b>Former Soviet Union - 12</b>								
<b>Kazakhstan</b>								
2012/13	12.4	0.8	9.8	0.0	6.3	2.0	6.8	2.9
2013/14	13.0	1.1	13.9	0.0	8.1	2.0	6.8	2.0
2014/15	11.9	1.1	13.0	0.6	5.5	2.0	6.8	3.2
2015/16	11.5	1.2	14.0	0.0	6.5	2.0	6.8	4.0
<b>Russia</b>								
2012/13	21.3	1.8	37.7	1.2	11.3	11.9	33.6	5.0
2013/14	23.4	2.2	52.1	0.8	18.6	12.5	34.1	5.2
2014/15	23.6	2.5	59.1	0.3	22.8	13.0	35.5	6.3
2015/16	25.7	2.4	61.0	0.4	23.5	14.0	37.0	7.1
<b>Ukraine</b>								
2012/13	5.6	2.8	15.8	0.0	7.2	3.1	11.4	2.6
2013/14	6.6	3.4	22.3	0.1	9.8	3.4	11.5	3.7
2014/15	6.3	3.9	24.8	0.0	11.3	4.0	12.0	5.2
2015/16	7.0	3.9	27.0	0.1	15.0	4.5	12.7	4.5
<b>Uzbekistan</b>								
2012/13	1.4	4.8	6.7	1.9	0.4	1.7	8.0	1.6
2013/14	1.4	4.9	6.8	2.2	0.3	1.9	8.4	1.9
2014/15	1.4	5.1	7.2	2.2	0.2	2.2	8.9	2.2
2015/16	1.4	5.1	7.2	2.2	0.2	2.2	9.1	2.3
<b>Other Former Soviet Union - 12</b>								
2012/13	3.2	2.4	7.8	4.1	0.3	2.8	12.0	1.9
2013/14	3.4	2.6	8.8	4.3	0.4	3.0	12.1	2.4
2014/15	3.4	2.6	8.8	4.5	0.4	3.4	12.6	2.6
2015/16	3.3	2.5	8.3	4.5	0.2	3.1	12.5	2.6
<b>Total Former Soviet Union - 12</b>								
2012/13	44.0	1.8	77.8	7.2	25.4	21.5	71.7	13.9
2013/14	47.7	2.2	103.9	7.4	37.1	22.8	72.9	15.1
2014/15	46.6	2.4	112.7	7.7	40.2	24.6	75.8	19.5
2015/16	48.9	2.4	117.5	7.1	45.4	25.8	78.1	20.5



## Former Soviet Union: Grain Supply and Demand (Barley)

Millions of Tons/Hectares

Country Mktg Year	Area Harvested	Yield	Production	MY Imports	MY Exports	Feed and Residual	Total Consumption	Ending Stocks
<b>Former Soviet Union - 12</b>								
<b>Kazakhstan</b>								
2012/13	1.6	0.9	1.5	0.0	0.2	1.2	1.4	0.2
2013/14	1.8	1.4	2.5	0.0	0.5	1.7	2.0	0.2
2014/15	1.9	1.3	2.4	0.0	0.5	1.6	1.9	0.2
2015/16	2.0	1.3	2.6	0.0	0.5	1.8	2.1	0.2
<b>Russia</b>								
2012/13	7.6	1.8	14.0	0.3	2.2	7.7	12.1	0.7
2013/14	8.0	1.9	15.4	0.2	2.7	8.3	12.7	0.9
2014/15	8.8	2.3	20.0	0.1	5.3	9.2	14.1	1.6
2015/16	7.8	2.2	17.5	0.1	4.5	8.7	13.5	1.2
<b>Ukraine</b>								
2012/13	3.3	2.1	6.9	0.0	2.1	3.5	5.1	0.9
2013/14	3.2	2.3	7.6	0.0	2.5	3.5	5.0	1.0
2014/15	3.2	3.0	9.5	0.0	4.5	3.0	4.5	1.5
2015/16	2.9	3.0	8.6	0.0	4.5	3.0	4.5	1.1
<b>Uzbekistan</b>								
2012/13	0.1	3.2	0.2	0.0	0.0	0.2	0.3	0.0
2013/14	0.1	3.2	0.2	0.0	0.0	0.2	0.3	0.0
2014/15	0.1	3.2	0.2	0.1	0.0	0.2	0.3	0.0
2015/16	0.1	3.2	0.2	0.1	0.0	0.3	0.3	0.0
<b>Other Former Soviet Union - 12</b>								
2012/13	1.2	2.8	3.3	0.1	0.0	2.7	3.5	0.4
2013/14	1.4	2.5	3.4	0.1	0.0	2.7	3.5	0.4
2014/15	1.4	2.6	3.6	0.2	0.0	2.9	3.7	0.5
2015/16	1.4	2.6	3.6	0.2	0.0	3.1	4.0	0.3
<b>Total Former Soviet Union - 12</b>								
2012/13	13.8	1.9	26.0	0.4	4.6	15.2	22.3	2.2
2013/14	14.5	2.0	29.2	0.3	5.7	16.4	23.5	2.6
2014/15	15.4	2.3	35.8	0.4	10.3	16.9	24.5	3.8
2015/16	14.2	2.3	32.6	0.3	9.5	16.9	24.4	2.8

## Former Soviet Union: Grain Supply and Demand (Corn)

Millions of Tons/Hectares

Country Mktg Year	Area Harvested	Yield	Production	MY Imports	MY Exports	Feed and Residual	Total Consumption	Ending Stocks
<b>Former Soviet Union - 12</b>								
<b>Kazakhstan</b>								
2012/13	0.1	5.0	0.5	0.0	0.0	0.4	0.5	0.0
2013/14	0.1	5.3	0.6	0.0	0.0	0.5	0.6	0.0
2014/15	0.1	5.3	0.7	0.0	0.0	0.5	0.6	0.1
2015/16	0.1	5.0	0.5	0.0	0.0	0.5	0.6	0.0
<b>Russia</b>								
2012/13	1.9	4.2	8.2	0.1	1.9	5.6	6.4	0.3
2013/14	2.3	5.0	11.6	0.1	4.2	6.6	7.5	0.3
2014/15	2.6	4.4	11.3	0.1	2.9	7.4	8.4	0.4
2015/16	2.7	5.0	13.5	0.1	4.0	8.3	9.3	0.6
<b>Ukraine</b>								
2012/13	4.4	4.8	20.9	0.0	12.7	6.8	8.1	1.2
2013/14	4.8	6.4	30.9	0.1	20.0	8.3	9.7	2.5
2014/15	4.6	6.2	28.5	0.1	19.8	8.0	9.4	1.8
2015/16	4.0	6.3	25.0	0.1	17.0	7.0	8.4	1.4
<b>Uzbekistan</b>								
2012/13	0.0	3.4	0.1	0.0	0.0	0.1	0.1	0.0
2013/14	0.0	3.4	0.1	0.0	0.0	0.1	0.2	0.0
2014/15	0.0	3.4	0.1	0.0	0.0	0.1	0.2	0.0
2015/16	0.0	3.4	0.1	0.0	0.0	0.1	0.1	0.0
<b>Other Former Soviet Union - 12</b>								
2012/13	1.0	2.7	2.6	0.2	0.4	2.6	3.0	0.5
2013/14	1.0	3.8	3.7	0.3	0.6	2.9	3.2	0.6
2014/15	0.8	3.5	2.9	0.3	0.3	2.7	3.0	0.6
2015/16	0.9	3.0	2.6	0.4	0.1	2.7	3.1	0.4
<b>Total Former Soviet Union - 12</b>								
2012/13	7.4	4.4	32.3	0.3	15.0	15.5	18.1	2.0
2013/14	8.3	5.7	46.9	0.5	24.8	18.4	21.1	3.4
2014/15	8.2	5.3	43.5	0.5	23.0	18.7	21.5	2.8
2015/16	7.7	5.4	41.8	0.5	21.1	18.6	21.5	2.4

**Wheat Supply and Disappearance: Selected Exporters**  
**Million Metric Tons/Hectares**

Country Mktg Year	Area Harvested	Yield	Production	MY Imports	MY Exports	Feed and Residual	Total Consumption	Ending Stocks
<b>Wheat Competitors</b>								
<b>Argentina</b>								
2011/12	5.2	3.0	15.5	0.0	12.9	0.1	6.0	0.7
2012/13	3.6	2.6	9.3	0.0	3.6	0.3	6.2	0.3
2013/14	3.5	3.0	10.5	0.0	2.3	0.1	6.1	2.5
2014/15	4.2	3.0	12.5	0.0	5.5	0.3	6.4	3.2
2015/16	3.5	3.0	10.5	0.0	5.0	0.1	6.2	2.6
<b>Australia</b>								
2011/12	13.9	2.2	29.9	0.1	24.7	3.2	6.5	7.1
2012/13	13.0	1.8	22.9	0.1	18.6	3.4	6.7	4.7
2013/14	12.6	2.0	25.3	0.2	18.6	3.6	7.0	4.6
2014/15	13.8	1.7	23.7	0.2	16.7	4.1	7.5	4.2
2015/16	13.8	2.0	27.0	0.2	19.0	3.9	7.3	5.0
<b>Canada</b>								
2011/12	8.6	3.0	25.3	0.5	17.4	4.7	9.9	5.9
2012/13	9.5	2.9	27.2	0.5	19.0	4.3	9.5	5.1
2013/14	10.4	3.6	37.5	0.4	23.3	4.2	9.4	10.4
2014/15	9.5	3.1	29.4	0.5	24.1	3.8	9.1	7.1
2015/16	9.6	2.7	26.0	0.5	19.0	3.8	9.0	5.6
<b>European Union</b>								
2011/12	25.8	5.3	138.2	7.4	16.7	57.5	127.2	13.5
2012/13	26.0	5.2	133.9	5.3	22.8	51.0	119.3	10.7
2013/14	25.9	5.6	144.4	4.0	32.0	49.0	117.2	9.9
2014/15	26.8	5.8	156.5	6.0	35.4	54.5	123.9	13.1
2015/16	26.7	5.8	155.3	6.0	33.0	57.0	125.9	15.5
<b>Kazakhstan</b>								
2011/12	13.7	1.7	22.7	0.0	11.8	2.6	7.6	6.2
2012/13	12.4	0.8	9.8	0.0	6.3	2.0	6.8	2.9
2013/14	13.0	1.1	13.9	0.0	8.1	2.0	6.8	2.0
2014/15	11.9	1.1	13.0	0.6	5.5	2.0	6.8	3.2
2015/16	11.5	1.2	14.0	0.0	6.5	2.0	6.8	4.0
<b>Russia</b>								
2011/12	24.8	2.3	56.2	0.6	21.6	15.5	38.0	10.9
2012/13	21.3	1.8	37.7	1.2	11.3	11.9	33.6	5.0
2013/14	23.4	2.2	52.1	0.8	18.6	12.5	34.1	5.2
2014/15	23.6	2.5	59.1	0.3	22.8	13.0	35.5	6.3
2015/16	25.7	2.4	61.0	0.4	23.5	14.0	37.0	7.1

## Wheat Supply and Disappearance: Selected Exporters (Continued)

Million Metric Tons/Hectares

Country Mktg Year	Area Harvested	Yield	Production	MY Imports	MY Exports	Feed and Residual	Total Consumption	Ending Stocks
<b>Ukraine</b>								
2011/12	6.7	3.4	22.3	0.1	5.4	6.1	15.0	5.4
2012/13	5.6	2.8	15.8	0.0	7.2	3.1	11.4	2.6
2013/14	6.6	3.4	22.3	0.1	9.8	3.4	11.5	3.7
2014/15	6.3	3.9	24.8	0.0	11.3	4.0	12.0	5.2
2015/16	7.0	3.9	27.0	0.1	15.0	4.5	12.7	4.5
<b>Total Wheat Competitors</b>								
2011/12	98.6	3.1	310.2	8.6	110.6	89.7	210.1	49.7
2012/13	91.4	2.8	256.6	7.1	88.7	76.0	193.5	31.3
2013/14	95.4	3.2	306.1	5.5	112.6	74.8	192.0	38.2
2014/15	96.2	3.3	318.9	7.6	121.3	81.7	201.2	42.2
2015/16	97.8	3.3	320.8	7.1	121.0	85.3	204.8	44.3

**Corn Supply and Disappearance: Selected Exporters**  
**Million Metric Tons/Hectares**

Country Mktg Year	Area Harvested	Yield	Production	MY Imports	MY Exports	Feed and Residual	Total Consumption	Ending Stocks
<b>Argentina</b>								
2007/08	3.4	6.5	22.0	0.0	14.8	4.9	6.8	2.1
2008/09	2.5	6.2	15.5	0.0	10.3	4.5	6.4	0.9
2009/10	3.0	8.3	25.0	0.0	16.5	5.0	6.9	2.5
2010/11	3.8	6.7	25.2	0.0	16.3	5.3	7.3	4.0
2011/12	3.6	5.8	21.0	0.0	17.1	4.8	7.0	0.9
2012/13	4.0	6.8	27.0	0.0	18.7	5.3	7.9	1.3
2013/14	3.4	7.6	26.0	0.0	17.1	5.8	8.8	1.4
2014/15	3.2	8.3	26.5	0.0	17.0	6.1	9.4	1.5
2015/16	3.0	8.0	24.0	0.0	14.5	6.5	10.0	1.0
<b>Brazil</b>								
2007/08	14.7	4.0	58.6	0.7	7.8	36.0	42.5	12.6
2008/09	14.1	3.6	51.0	1.1	7.1	38.5	45.5	12.1
2009/10	12.9	4.3	56.1	0.4	11.6	40.0	47.0	10.0
2010/11	13.8	4.2	57.4	0.8	8.4	42.5	49.5	10.3
2011/12	15.2	4.8	73.0	0.8	24.3	43.0	50.5	9.2
2012/13	15.8	5.2	81.5	0.9	24.9	44.5	52.5	14.2
2013/14	15.8	5.1	80.0	0.8	21.0	46.0	55.0	19.0
2014/15	15.8	5.4	85.0	0.6	29.0	48.0	57.0	18.6
2015/16	15.5	5.2	80.0	0.6	25.0	50.0	59.0	15.2
<b>China</b>								
2007/08	29.5	5.2	152.3	0.0	0.5	106.0	150.0	38.4
2008/09	29.9	5.6	165.9	0.0	0.2	108.0	153.0	51.2
2009/10	31.2	5.3	164.0	1.3	0.2	118.0	165.0	51.3
2010/11	32.5	5.5	177.2	1.0	0.1	128.0	180.0	49.4
2011/12	33.5	5.7	192.8	5.2	0.1	131.0	188.0	59.3
2012/13	35.0	5.9	205.6	2.7	0.1	144.0	200.0	67.6
2013/14	36.3	6.0	218.5	3.3	0.0	154.0	212.0	77.3
2014/15	37.1	5.8	215.7	5.7	0.0	157.0	217.0	81.7
2015/16	37.9	5.9	225.0	3.0	0.1	157.0	219.0	90.6
<b>South Africa</b>								
2007/08	3.3	4.0	13.2	0.0	2.2	4.8	10.1	1.4
2008/09	2.9	4.3	12.6	0.0	1.7	4.7	10.3	2.0
2009/10	3.3	4.1	13.4	0.0	2.1	4.9	10.6	2.8
2010/11	2.9	3.8	10.9	0.4	2.4	5.0	10.7	1.0
2011/12	3.1	4.1	12.8	0.0	1.8	5.0	10.7	1.3
2012/13	3.2	3.8	12.4	0.1	2.1	5.1	11.0	0.7

**Corn Supply and Disappearance: Selected Exporters (Continued)**

Million Metric Tons/Hectares

Country Mktg Year	Area Harvested	Yield	Production	MY Imports	MY Exports	Feed and Residual	Total Consumption	Ending Stocks
2013/14	3.1	4.9	14.9	0.1	2.0	5.5	11.5	2.2
2014/15	3.0	3.5	10.8	0.5	0.7	5.5	11.2	1.6
2015/16	3.2	4.2	13.5	0.0	1.5	5.5	11.4	2.2
<b>Total Corn Competitors</b>								
2007/08	50.9	4.8	246.1	0.8	25.3	151.7	209.4	54.5
2008/09	49.4	5.0	245.0	1.2	19.3	155.7	215.2	66.2
2009/10	50.4	5.1	258.5	1.7	30.3	167.9	229.5	66.5
2010/11	52.9	5.1	270.8	2.2	27.3	180.8	247.5	64.7
2011/12	55.5	5.4	299.5	6.0	43.4	183.8	256.2	70.7
2012/13	58.1	5.6	326.5	3.7	45.8	198.9	271.4	83.7
2013/14	58.6	5.8	339.4	4.1	40.0	211.3	287.3	99.9
2014/15	59.1	5.7	338.0	6.8	46.7	216.6	294.6	103.3
2015/16	59.6	5.8	342.5	3.6	41.1	219.0	299.4	109.0

**Barley Supply and Disappearance: Selected Exporters**  
**Million Metric Tons/Hectares**

Country Mktg Year	Area Harvested	Yield	Production	MY Imports	MY Exports	Feed and Residual	Total Consumption	Ending Stocks
<b>Australia</b>								
2007/08	4.9	1.5	7.2	0.0	3.4	2.1	3.1	1.7
2008/09	5.0	1.6	8.0	0.0	3.2	2.9	4.0	2.4
2009/10	4.4	1.8	7.9	0.0	3.9	3.3	4.5	1.9
2010/11	3.7	2.2	8.0	0.0	4.7	3.0	4.2	1.0
2011/12	3.7	2.2	8.2	0.0	5.4	2.1	3.3	0.5
2012/13	3.6	2.1	7.5	0.0	4.5	1.8	3.0	0.5
2013/14	3.8	2.4	9.2	0.0	6.2	1.5	2.8	0.7
2014/15	3.8	2.1	8.0	0.0	5.6	1.3	2.6	0.5
2015/16	4.0	2.2	8.9	0.0	6.0	1.3	2.6	0.8
<b>Canada</b>								
2007/08	4.0	2.8	10.9	0.1	3.0	6.4	7.8	1.6
2008/09	3.5	3.4	11.8	0.0	1.5	7.6	8.9	3.0
2009/10	2.9	3.3	9.5	0.0	1.3	7.5	8.7	2.5
2010/11	2.4	3.2	7.6	0.0	1.2	6.3	7.5	1.5
2011/12	2.4	3.3	7.9	0.0	1.3	5.7	6.9	1.2
2012/13	2.8	2.9	8.0	0.0	1.4	5.7	6.8	1.0
2013/14	2.7	3.9	10.2	0.0	1.6	6.5	7.7	2.0
2014/15	2.1	3.3	7.1	0.1	1.5	5.2	6.4	1.2
2015/16	2.4	3.2	7.6	0.1	1.5	5.0	6.2	1.2
<b>European Union</b>								
2007/08	13.9	4.2	57.8	0.3	3.8	38.9	54.5	5.7
2008/09	14.6	4.5	65.8	0.3	3.6	41.7	57.3	11.0
2009/10	14.0	4.5	62.4	0.1	1.1	41.7	56.8	15.6
2010/11	12.5	4.3	53.7	0.2	4.9	41.3	56.6	7.9
2011/12	11.9	4.3	51.9	0.5	3.0	35.8	51.2	6.1
2012/13	12.5	4.4	54.9	0.1	4.9	35.5	51.0	5.1
2013/14	12.4	4.8	59.7	0.0	5.7	38.0	53.4	5.7
2014/15	12.4	4.9	60.5	0.1	9.5	35.5	51.1	5.6
2015/16	12.3	4.9	59.8	0.2	7.5	37.0	52.7	5.4

**Sorghum Supply and Disappearance: Selected Exporters**  
**Million Metric Tons/Hectares**

Country Mktg Year	Area Harvested	Yield	Production	MY Imports	MY Exports	Feed and Residual	Total Consumption	Ending Stocks
<b>Argentina</b>								
2007/08	0.6	4.7	2.9	0.0	1.2	1.0	1.2	0.7
2008/09	0.5	3.7	1.7	0.0	1.1	1.0	1.1	0.2
2009/10	0.8	4.8	3.6	0.0	1.8	1.7	1.9	0.2
2010/11	1.0	4.4	4.4	0.0	1.7	1.7	1.9	0.9
2011/12	1.0	4.2	4.2	0.0	3.1	1.7	1.9	0.2
2012/13	1.1	4.5	4.7	0.0	1.8	2.0	2.3	0.8
2013/14	1.0	4.4	4.4	0.0	1.3	2.3	2.7	1.2
2014/15	0.8	4.5	3.5	0.0	1.1	2.4	2.8	0.8
2015/16	1.0	4.5	4.5	0.0	1.6	2.5	2.9	0.8
<b>Australia</b>								
2007/08	0.9	4.0	3.8	0.0	0.8	2.2	2.2	0.8
2008/09	0.8	3.5	2.7	0.0	1.0	1.8	1.8	0.7
2009/10	0.5	3.0	1.5	0.0	0.3	1.2	1.2	0.7
2010/11	0.6	3.1	1.9	0.0	0.9	1.4	1.4	0.4
2011/12	0.7	3.4	2.2	0.0	1.3	1.1	1.1	0.2
2012/13	0.6	3.4	2.2	0.0	1.2	1.1	1.1	0.2
2013/14	0.5	2.4	1.3	0.0	0.4	0.9	0.9	0.2
2014/15	0.7	3.2	2.1	0.0	1.5	0.6	0.6	0.2
2015/16	0.7	3.0	2.1	0.0	0.9	1.2	1.2	0.2



## U.S. Grains Supply and Distribution: Wheat, Corn, Sorghum, Barley, Oats, Rye, and Rice

Thousand Metric Tons/Hectares

	Area Harvested	Yield	Rough Production	Production	Imports	TY Imports	Exports	TY Exports	Feed Dom. Consumption	Domestic Consumption	Ending Stocks
<b>Wheat</b>											
2013/14	18,345	3	nr	58,105	4,710	4,785	32,001	31,518	6,196	34,287	16,065
2014/15	18,771	3	nr	55,147	4,068	3,987	23,249	22,752	3,254	31,530	20,501
2015/16	19,058	3	nr	55,840	3,402	3,350	23,133	23,000	4,899	33,177	23,433
<b>Corn</b>											
2013/14	35,390	10	nr	351,272	909	727	48,783	50,684	128,023	292,965	31,292
2014/15	33,644	11	nr	361,091	804	800	47,359	46,800	135,061	301,851	43,977
2015/16	32,644	11	nr	344,311	762	750	46,992	47,000	133,991	302,401	39,657
<b>Sorghum</b>											
2013/14	2,665	4	nr	9,966	2	3	5,362	5,717	2,351	4,127	864
2014/15	2,590	4	nr	10,988	10	8	8,965	9,200	2,043	2,429	468
2015/16	3,094	5	nr	14,569	0	0	10,923	11,000	2,667	3,048	1,066
<b>Barley</b>											
2013/14	1,230	4	nr	4,719	408	522	311	336	1,440	4,775	1,791
2014/15	1,011	4	nr	3,953	513	450	312	300	938	4,234	1,711
2015/16	1,258	4	nr	4,666	435	500	327	300	1,089	4,420	2,065
<b>Oats</b>											
2013/14	408	2	nr	938	1,674	1,866	23	29	1,694	2,757	359
2014/15	419	2	nr	1,019	1,852	1,750	26	25	1,307	2,424	780
2015/16	516	3	nr	1,300	1,637	1,600	29	30	1,710	2,828	860
<b>Rye</b>											
2013/14	113	2	nr	194	234	204	7	6	184	424	7
2014/15	104	2	nr	183	237	225	6	5	164	406	15
2015/16	146	2	nr	292	216	200	6	5	221	467	50
<b>Rice, Milled</b>											
2013/14	999	9	8,615	6,117	734	755	3,005	2,998	nr	3,977	1,025
2014/15	1,181	8	10,026	7,068	783	800	3,207	3,350	nr	4,117	1,552
2015/16	1,040	8	8,519	5,963	810	820	3,080	3,250	nr	3,981	1,264

Notes: Wheat Trade Year (TY) statistics are on July/June years. Barley, corn, sorghum, rye and oats Trade Year (TY) statistics are on Oct/Sept years. Rice Trade Year (TY) statistics are for the subsequent calendar year; 'Imports' and 'Exports' columns contain data on the local marketing year: wheat, barley, oats and rye are June/May; corn and sorghum are Sept/Aug; rice is Aug/July.

**Total Wheat and Coarse Grains: Supply and Demand**

Millions of Metric Tons/Hectares

	<b>Area Harvested</b>	<b>Yield</b>	<b>Production</b>	<b>TY Exports</b>	<b>Feed Dom.</b>	<b>Domestic Consumpti</b>	<b>Ending Stocks</b>
<b>Wheat and Coarse Grains</b>							
1986/87	565.2	2.4	1,347.9	174.7	645.6	1,299.4	469.2
1987/88	544.3	2.4	1,285.9	202.2	656.5	1,329.8	423.1
1988/89	541.9	2.2	1,218.1	203.3	619.4	1,302.0	339.3
1989/90	548.2	2.4	1,327.4	208.9	644.4	1,346.2	320.5
1990/91	545.7	2.6	1,417.6	190.1	669.7	1,369.8	368.4
1991/92	543.3	2.5	1,355.7	207.5	653.4	1,366.1	357.9
1992/93	545.9	2.6	1,431.7	205.2	664.1	1,388.4	398.4
1993/94	536.1	2.5	1,356.6	188.2	657.0	1,389.2	365.8
1994/95	534.1	2.6	1,392.8	200.1	670.3	1,395.6	363.0
1995/96	527.2	2.5	1,338.8	187.5	641.6	1,381.8	320.0
1996/97	546.0	2.7	1,490.5	198.3	674.4	1,442.0	368.5
1997/98	535.3	2.8	1,491.6	190.3	685.4	1,444.1	416.0
1998/99	520.4	2.8	1,481.8	198.7	685.1	1,448.9	448.9
1999/00	506.2	2.9	1,465.4	214.0	690.1	1,469.8	444.0
2000/01	509.4	2.8	1,447.4	204.9	700.4	1,472.6	418.8
2001/02	511.9	2.9	1,481.2	208.3	713.6	1,496.6	403.3
2002/03	502.6	2.9	1,444.6	209.2	711.6	1,506.3	341.6
2003/04	510.8	2.9	1,472.4	205.8	717.7	1,535.4	278.7
2004/05	514.1	3.2	1,642.8	214.4	755.9	1,585.9	335.6
2005/06	516.3	3.1	1,599.8	222.5	757.2	1,617.0	318.4
2006/07	517.7	3.1	1,585.1	229.8	748.6	1,629.9	273.7
2007/08	533.8	3.2	1,692.7	244.7	762.1	1,674.4	291.9
2008/09	538.7	3.3	1,791.7	253.6	773.6	1,722.2	361.4
2009/10	532.8	3.4	1,803.8	254.1	780.1	1,766.3	398.9
2010/11	522.5	3.3	1,748.5	250.1	772.4	1,783.2	364.1
2011/12	538.2	3.4	1,853.0	287.1	805.6	1,852.4	364.7
2012/13	532.8	3.4	1,796.1	279.4	807.5	1,814.9	346.0
2013/14	542.3	3.7	1,996.2	327.0	863.9	1,936.4	405.8
2014/15	545.9	3.7	2,022.9	333.5	897.5	1,985.4	443.3
2015/16	546.0	3.7	2,000.0	330.0	906.6	1,992.0	451.4

Notes: Wheat and coarse grains trade data are on July/June years through 1975/76. From 1976/77 to the present, coarse grains data are on an Oct/Sept trade year.

## World Wheat and Coarse Grains: Supply and Demand

Millions of Metric Tons/Hectares

	Area Harvested	Yield	Production	TY Exports	Feed Dom.	Domestic Consumption	Ending Stocks
<b>Wheat</b>							
1993/94	221.1	2.5	558.6	101.7	110.9	552.6	183.1
1994/95	213.4	2.5	523.1	101.5	102.8	541.7	164.5
1995/96	216.7	2.5	537.6	99.2	96.7	545.8	156.3
1996/97	227.1	2.6	581.4	104.0	101.1	572.7	165.0
1997/98	226.4	2.7	610.2	104.5	105.9	576.4	198.8
1998/99	219.2	2.7	590.5	102.0	109.2	578.9	210.4
1999/00	212.6	2.8	587.0	111.9	104.5	587.1	210.3
2000/01	215.6	2.7	583.3	102.1	111.1	587.0	206.6
2001/02	214.5	2.7	583.9	107.9	112.0	586.8	203.7
2002/03	213.4	2.7	569.7	106.5	116.1	604.1	169.3
2003/04	207.6	2.7	555.3	103.5	101.5	588.9	135.7
2004/05	215.8	2.9	626.8	113.2	110.4	606.1	156.4
2005/06	217.6	2.8	618.8	114.1	117.4	621.8	153.4
2006/07	212.3	2.8	596.7	115.3	112.8	616.5	133.6
2007/08	217.1	2.8	612.7	116.0	104.6	617.5	128.8
2008/09	224.2	3.0	683.6	143.2	124.3	643.3	169.1
2009/10	225.6	3.0	687.0	135.3	122.1	652.9	203.2
2010/11	216.8	3.0	649.9	134.1	116.7	654.0	199.1
2011/12	220.8	3.2	696.1	153.8	148.3	697.5	197.7
2012/13	215.8	3.1	658.7	147.2	138.2	679.2	177.2
2013/14	219.9	3.3	715.1	162.4	126.8	698.5	193.8
2014/15	223.4	3.2	725.5	161.3	132.9	707.2	212.1
2015/16	224.9	3.3	732.8	160.5	137.7	716.4	228.5
<b>Coarse Grains</b>							
1993/94	315.0	2.5	798.0	86.5	546.1	836.6	182.7
1994/95	320.8	2.7	869.7	98.6	567.6	853.9	198.5
1995/96	310.5	2.6	801.2	88.3	544.9	836.0	163.7
1996/97	318.9	2.9	909.0	94.3	573.3	869.3	203.4
1997/98	308.9	2.9	881.4	85.8	579.5	867.7	217.1
1998/99	301.2	3.0	891.3	96.7	575.9	870.0	238.5
1999/00	293.7	3.0	878.5	102.1	585.6	882.8	233.7
2000/01	293.8	2.9	864.1	102.8	589.3	885.6	212.2
2001/02	297.4	3.0	897.3	100.4	601.6	909.8	199.6
2002/03	289.2	3.0	874.9	102.7	595.5	902.2	172.3
2003/04	303.1	3.0	917.1	102.3	616.1	946.4	143.0
2004/05	298.3	3.4	1,016.1	101.2	645.5	979.8	179.3
2005/06	298.7	3.3	981.0	108.4	639.8	995.2	165.0
2006/07	305.4	3.2	988.5	114.5	635.8	1,013.5	140.0
2007/08	316.7	3.4	1,080.0	128.7	657.5	1,056.9	163.1
2008/09	314.5	3.5	1,108.0	110.4	649.3	1,078.8	192.3
2009/10	307.2	3.6	1,116.8	118.8	658.0	1,113.4	195.7
2010/11	305.7	3.6	1,098.6	116.0	655.7	1,129.3	165.0
2011/12	317.4	3.6	1,156.9	133.4	657.3	1,154.9	167.0
2012/13	317.0	3.6	1,137.4	132.2	669.3	1,135.7	168.8
2013/14	322.5	4.0	1,281.1	164.6	737.1	1,237.9	212.1
2014/15	322.5	4.0	1,297.4	172.1	764.6	1,278.3	231.2
2015/16	321.2	3.9	1,267.2	169.6	768.8	1,275.5	222.9

Notes: Wheat and coarse grains trade data are on July/June years through 1975/76. From 1976/77 to the present, coarse grains data are on an Oct/Sept trade year.

## World Corn and Barley: Supply and Demand

Millions of Metric Tons/Hectares

	Area Harvested	Yield	Productio n	TY Exports	Feed Dom.	Domestic Consumpti	Ending Stocks
<b>Corn</b>							
1993/94	130.8	3.6	476.0	57.4	342.0	509.3	129.4
1994/95	135.2	4.1	559.4	71.9	371.6	535.5	153.3
1995/96	135.0	3.8	516.5	64.8	365.3	536.6	133.3
1996/97	141.5	4.2	592.8	66.6	387.9	559.8	166.3
1997/98	136.2	4.2	574.4	63.1	400.6	573.5	167.2
1998/99	138.9	4.4	605.7	68.7	404.4	581.5	191.4
1999/00	138.9	4.4	608.4	72.0	422.6	605.3	194.4
2000/01	137.1	4.3	591.8	75.9	427.4	610.9	175.3
2001/02	137.3	4.4	601.8	72.7	436.4	625.6	151.5
2002/03	137.5	4.4	603.9	76.8	433.4	628.6	126.8
2003/04	141.7	4.4	627.5	79.0	445.8	649.7	104.6
2004/05	145.4	4.9	716.9	76.0	476.0	690.4	131.1
2005/06	145.4	4.8	700.7	82.5	478.9	708.3	123.5
2006/07	150.4	4.8	716.7	91.3	479.5	730.8	109.5
2007/08	160.4	5.0	795.5	98.2	499.2	775.0	129.9
2008/09	158.7	5.0	799.8	83.6	481.4	784.4	145.3
2009/10	158.4	5.2	824.8	92.7	490.8	826.3	143.8
2010/11	164.6	5.1	835.5	91.7	502.4	852.3	127.1
2011/12	172.2	5.2	889.8	103.7	506.8	884.1	132.8
2012/13	177.8	4.9	870.3	100.5	518.7	865.2	137.9
2013/14	181.5	5.5	991.4	130.2	574.3	953.5	175.9
2014/15	178.8	5.6	1,008.7	127.1	599.7	988.5	196.0
2015/16	177.1	5.5	972.6	127.7	602.5	980.8	187.8
<b>Barley</b>							
1993/94	73.2	2.3	169.0	18.8	123.8	169.1	34.9
1994/95	72.2	2.2	160.7	15.3	120.9	165.6	30.0
1995/96	66.4	2.1	141.2	13.4	107.8	150.7	20.5
1996/97	64.3	2.4	153.2	17.9	106.3	149.5	24.1
1997/98	63.8	2.4	153.9	12.8	104.1	145.8	32.2
1998/99	56.6	2.4	136.0	17.8	99.5	139.3	29.0
1999/00	52.1	2.4	127.4	17.8	94.0	132.5	23.9
2000/01	52.9	2.5	133.0	16.3	94.6	134.3	22.6
2001/02	55.7	2.6	143.4	17.2	95.5	136.8	29.2
2002/03	54.8	2.4	134.2	16.3	94.7	135.8	27.5
2003/04	58.4	2.4	142.7	14.8	103.1	146.8	23.5
2004/05	57.5	2.6	152.1	17.0	100.0	142.5	33.1
2005/06	55.3	2.5	136.1	17.4	97.3	140.9	28.3
2006/07	56.4	2.4	136.9	14.6	98.4	143.7	21.5
2007/08	55.9	2.4	133.0	18.5	91.1	134.0	20.6
2008/09	55.2	2.8	155.1	18.2	100.4	144.0	31.6
2009/10	54.4	2.8	151.1	17.3	101.4	145.3	37.4
2010/11	47.2	2.6	123.2	15.2	91.3	136.3	24.3
2011/12	49.4	2.7	133.6	21.4	91.7	135.2	22.7
2012/13	50.1	2.6	129.2	22.1	88.7	131.4	20.5
2013/14	50.7	2.9	144.6	23.9	97.1	141.1	24.0
2014/15	49.9	2.8	141.2	29.8	95.1	141.2	23.9
2015/16	49.6	2.9	144.6	25.3	95.8	145.0	23.5

Notes: Coarse grains trade data are on July/June years through 1975/76. From 1976/77 to the present, coarse grains data are on an Oct/Sept trade year.

## World Rice: Supply and Demand

Millions of Metric Tons/Hectares

	Area Harvested	Yield	Rough Production	Production	TY Exports	Domestic Consumption	Ending Stocks
<b>Rice, Milled</b>							
1986/87	144.8	3.2	464.6	316.1	12.9	310.4	103.3
1987/88	141.4	3.3	464.8	315.1	11.4	313.1	105.3
1988/89	146.6	3.3	490.8	332.1	14.0	325.7	111.7
1989/90	147.8	3.5	510.3	345.2	11.7	336.3	120.6
1990/91	147.0	3.5	519.4	351.4	12.3	345.3	126.7
1991/92	147.5	3.5	522.8	353.2	14.4	353.2	126.7
1992/93	146.5	3.6	524.2	354.0	14.9	357.5	123.2
1993/94	145.3	3.6	526.1	354.7	16.6	358.9	119.0
1994/95	147.3	3.7	540.0	364.1	20.8	365.5	117.6
1995/96	148.4	3.7	547.3	368.8	19.7	368.3	118.1
1996/97	150.1	3.8	565.3	381.4	18.9	379.2	120.3
1997/98	151.7	3.8	575.2	387.4	27.6	380.0	127.7
1998/99	153.1	3.8	587.0	394.9	24.8	388.7	134.0
1999/00	155.9	3.9	608.8	409.3	22.8	400.3	143.1
2000/01	152.4	3.9	594.1	399.3	24.3	395.6	146.7
2001/02	151.3	3.9	594.3	399.5	27.9	413.3	132.9
2002/03	146.9	3.8	563.1	378.2	27.6	408.1	103.0
2003/04	149.3	3.9	585.4	392.5	27.3	413.8	81.7
2004/05	151.8	3.9	596.4	400.8	28.9	408.5	74.0
2005/06	153.9	4.0	622.2	417.8	29.0	415.4	76.5
2006/07	154.5	4.0	625.0	420.1	31.8	421.2	75.4
2007/08	154.9	4.2	643.7	433.7	29.5	428.1	81.0
2008/09	158.1	4.2	668.6	449.3	29.4	437.7	92.6
2009/10	155.6	4.2	656.1	440.6	31.8	438.4	94.9
2010/11	158.4	4.2	672.4	450.6	36.5	445.3	100.1
2011/12	160.5	4.3	697.3	467.7	39.9	461.0	106.9
2012/13	158.7	4.4	705.0	472.8	39.5	468.9	110.8
2013/14	161.7	4.4	713.4	478.4	43.3	481.6	107.6
2014/15	160.1	4.5	713.9	478.8	42.5	484.6	101.8
2015/16	159.2	4.4	706.8	474.0	42.0	487.5	88.3

Notes: Stocks, exports and consumption are expressed on a milled basis in marketing years.

---

## **ENDNOTES TO GRAIN: WORLD MARKETS AND TRADE**

### **REGIONAL TABLES**

**North America:** Canada, Mexico, the United States.

**Central America:** Belize, Costa Rica, El Salvador, Guatemala, Honduras, Nicaragua, Panama.

**Caribbean:** Anguilla, Antigua and Barbuda, Aruba, Bahamas, Barbados, Bermuda, British Virgin Islands, Cayman Islands, Cuba, Dominica, Dominican Republic, French West Indies, Grenada, Guadeloupe, Haiti, Jamaica and Dep, Leeward-Windward Islands, Martinique, Montserrat, Netherlands Antilles, Puerto Rico, Kitts and Nevis, St. Lucia, St. Vincent and the Grenadines, Trinidad and Tobago, Turks and Caicos Islands, Virgin Islands of the U.S.

**South America:** Argentina, Bolivia, Brazil, Chile, Colombia, Ecuador, Falkland Islands (Islas Malvinas), French Guiana, Guyana, Paraguay, Peru, Suriname, Uruguay, Venezuela.

**EU:** Austria, Belgium/Luxembourg, Bulgaria, Croatia, Cyprus, Czech Republic, Denmark, Estonia, Finland, France, Germany, Greece, Hungary, Ireland, Italy, Latvia, Lithuania, Malta, Netherlands, Poland, Portugal, Romania, Slovakia, Slovenia, Spain, Sweden, United Kingdom.

**Other Europe:** Albania, Azores, Bosnia and Herzegovina, Former Yugoslavia, Gibraltar, Iceland, Macedonia, Montenegro, Norway, Serbia, Switzerland.

**Former Soviet Union:** Armenia, Azerbaijan, Belarus, Georgia, Kazakhstan, Kyrgyzstan, Moldova, Russia, Tajikistan, Turkmenistan, Ukraine, Uzbekistan.

**Middle East:** Bahrain, Iran, Iraq, Israel, Jordan, Kuwait, Lebanon, Oman, Qatar, Saudi Arabia, Syria, Turkey, United Arab Emirates, Yemen.

**North Africa:** Algeria, Egypt, Libya, Morocco, Tunisia.

**Sub-Saharan Africa:** all African countries except North Africa.

**East Asia:** China, Hong Kong, Japan, South Korea, North Korea, Macau, Mongolia, Taiwan.

**South Asia:** Afghanistan, Bangladesh, Bhutan, India, Nepal, Pakistan, Sri Lanka, Maldives.

**Southeast Asia:** Brunei, Burma, Cambodia, Indonesia, Laos, Malaysia, Philippines, Singapore, Thailand, Vietnam.

**Oceania:** Australia, Fiji, New Zealand, Papua New Guinea.

---

## **OTHER NOTES**

**Local Marketing Years (LMY):** LMY refers to the 12-month period at the onset of the main harvest, when the crop is marketed (i.e., consumed, traded, or stored). The year first listed begins a country's LMY for that commodity (2015/16 starts in 2015); except for summer grains in certain Southern Hemisphere countries and for rice in selected countries, where the second year begins the LMY (2015/16 starts in 2016). Key exporter LMY's are:

<b>Wheat</b>	<b>Corn</b>	<b>Barley</b>	<b>Sorghum</b>
Argentina (Dec/Nov)	Argentina (Mar/Feb)	Australia (Nov/Oct)	Argentina (Mar/Feb)
Australia (Oct/Sep)	Brazil (Mar/Feb)	Canada (Aug/Jul)	Australia (Mar/Feb)
Canada (Aug/Jul)	China (Oct/Sep)	European Union (Jul/Jun)	United States (Sep/Aug)
China (Jul/Jun)	South Africa (May/Apr)	Russia (Jul/Jun)	
European Union (Jul/Jun)	United States (Sep/Aug)	Ukraine (Jul/Jun)	
India (Apr/Mar)		United States (Jun/May)	
Kazakhstan (Jul/Jun)			
Russia (Jul/Jun)			
Turkey (Jun/May)			
Ukraine (Jul/Jun)			
United States (Jun/May)			

For a complete list of local marketing years, please see the FAS website (<http://www.fas.usda.gov/psdonline/psdAvailability.aspx>).

**Stocks:** Unless otherwise stated, stock data are based on an aggregate of differing local marketing years and should not be construed as representing world stock levels at a fixed point in time.

**Consumption:** World totals for consumption reflect total utilization, including food, seed, industrial, feed, and waste; as well as differences in local marketing year imports and local marketing year exports. Consumption statistics for regions and individual countries, however, reflect food, seed, industrial, feed, and waste only.

**Trade:** All PSD tables are balanced on the different local marketing years. All trade tables contain Trade Year (TY) data which puts all countries on a uniform, 12-month period for analytical comparisons: wheat is July/June; coarse grains, corn, barley, sorghum, oats, and rye are Oct/Sept; and rice is calendar year.

**EU Consolidation:** The trade figures starting from 1999/00 represent the European Union (Croatia plus the former EU-27) and exclude all intra-trade. For the years 1960/61 through 1998/99, figures are the EU-15 and also exclude all intra-trade. EU-15 member states' data for grains are no longer maintained in the official USDA database. Data for the individual NMS-10, plus Bulgaria, Romania, and Croatia, exists only prior to 1999/00.

**Statistics:** (1) Wheat trade statistics include wheat, flour, and selected pasta products on a grain equivalent basis. (2) Rice trade statistics include rough, brown, milled, and broken on a milled equivalent basis. (3) Coarse grains statistics include corn, barley, sorghum, oats, rye, millet, and mixed grains but exclude trade in barley malt, millet, and mixed grains.

---

**Unaccounted:** This term includes grain in transit, reporting discrepancies in some countries, and trade to countries outside the USDA database.

The Global Commodity Analysis Division, Office of Global Analysis, Foreign Agricultural Service, USDA, Washington, DC 20250, prepared this circular. Information is gathered from official statistics of foreign governments and other foreign source materials, reports of U.S. agricultural attachés and Foreign Service officers, office research, and related information. Further information may be obtained by writing the Division or telephoning (202) 720-3448.

**Note:** The previous report in this series was Grain: World Markets and Trade September 2015. For further details on world grain production, please see World Agricultural Production October 2015.

This circular is available in its entirety on the Internet via the Foreign Agricultural Service Home Page. The address is: <http://www.fas.usda.gov>

Questions may be directed to the following staff:

Teresa McKeivier	(202) 690-1151	<a href="mailto:Teresa.McKeivier@fas.usda.gov">Teresa.McKeivier@fas.usda.gov</a>	Wheat
Andrew Sowell	(202) 720-0262	<a href="mailto:Andrew.Sowell@fas.usda.gov">Andrew.Sowell@fas.usda.gov</a>	Wheat
Yoonhee Macke	(202) 690-4199	<a href="mailto:Yoonhee.Macke@fas.usda.gov">Yoonhee.Macke@fas.usda.gov</a>	Rice
Kyle Bonsu	(202) 260-8370	<a href="mailto:Kyle.Bonsu@fas.usda.gov">Kyle.Bonsu@fas.usda.gov</a>	Rice
Rick O'Meara	(202) 720-4933	<a href="mailto:Richard.Omeara@fas.usda.gov">Richard.Omeara@fas.usda.gov</a>	Coarse Grains
Lisa Bennett	(202) 720-0929	<a href="mailto:Lisa.Bennett@fas.usda.gov">Lisa.Bennett@fas.usda.gov</a>	Coarse Grains
Barrett Bumpas	(202) 692-0337	<a href="mailto:Barrett.Bumpas@fas.usda.gov">Barrett.Bumpas@fas.usda.gov</a>	Coarse Grains