

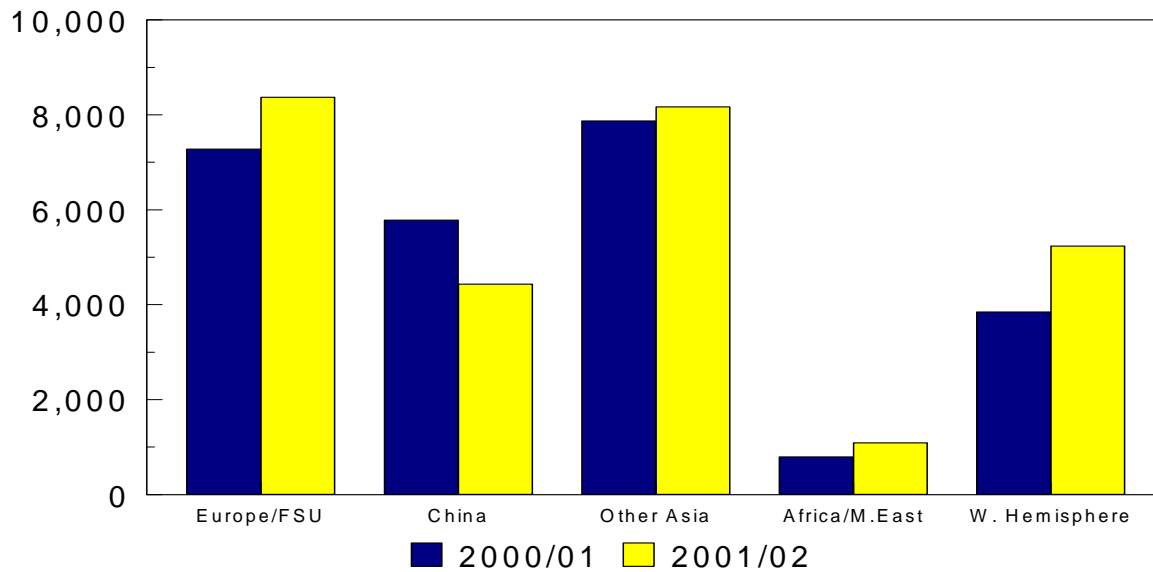


Oilseeds: World Markets and Trade

U.S. Soybean Exports Expected to Reach Record Level In 2001/02

Reported U.S. Soybean Export Sales Through May 30th

Soybeans (Million Tons)



The pace of U.S. soybean exports for 2001/02 continues to exceed expectations. Total export commitments (outstanding sales and accumulated exports) stands at 25.6 million tons, up over 5 percent from the same period in 2000/01. Total soybean exports for 2001/02 are forecast to reach 28.2 million tons, up 4 percent over the previous year. Restrictions on soybean imports by China have helped reduce U.S. exports there by 23 percent through May 30th compared to last year. However, exports to other markets have more than made up the difference. Major export increases include Canada, Mexico, Colombia, Egypt, Romania, Turkey, and the EU. Attractive pricing of U.S. soybeans, abundant supplies, and shortfalls due to drought conditions in Canada in 2001 have combined to boost total sales to date and expected 2001/02 exports. Exports of soybean meal are also expected to be higher in 2001/02, but only by 1 percent. Increased exports to Mexico, Canada, Peru, and Ecuador were offset by generally lower export volume to the EU and Asia.

Situation and Outlook - June 2002

The world oilseed export forecast for 2001/02 rose 463,000 tons this month to 70.8 million tons. The increases were led by gains in rapeseed and soybeans, up 151,000 and 143,000 tons respectively. Most of the increase in soybean exports accrued to the U.S., which was up 400,000 tons as a result of a slowdown in exports from Brazil and Argentina, which were down 300,000 and 150,000 tons respectively. The continuing economic upheaval in Argentina, and slow early season exports from Brazil, where farmers withheld soybeans from the market on expectations of higher prices, are the reasons for their respective declines. Exports of other oilseeds also increased, with cottonseed up 96,000 tons, sunflowerseed up 43,000 tons, and peanuts, 30,000 tons higher.

World ending stocks of all oilseeds estimated by USDA increased again this month by nearly 300,000 tons to 33.4 million. The overall increase in ending stocks is mainly attributable to increased rapeseed stocks in Canada and Europe. The forecast for most other oilseed ending stocks showed only minor changes.

The world oilseed crush forecast declined to 265.3 million tons, down 961,000 tons from last month's estimate. Leading the decline in oilseed crush is the EU where soybean crush for 2001/02 was reduced 868,000 tons this month to 18.3 million tons. Despite the lower crush this month for the EU, soybean crush there is still expected to increase nearly 1.3 million tons in 2001/02, and represents growth of 7.6 percent over 2000/01. Estimates of rapeseed crush are down 267,000 tons this month. Canadian rapeseed crush, declined by 190,000 tons due to reduced production.

The total oilseed meal export forecast for 2001/02 increased 362,000 tons this month to 59.3 million tons. Soybean meal exports were raised 188,000 tons, cottonseed meal exports were increased 80,000 tons, and sunflowerseed meal exports were up 79,000 tons this month, with smaller increases in peanut and palm kernel meal.

The vegetable oil production forecast for 2001/02 fell 112,000 tons this month to 91.3 million tons. Forecast production of olive oil and sunflowerseed oil rose 178,000 tons and 22,000 tons respectively, but were more than offset by declines of 134,000 tons for soybean oil, 130,000 tons for rapeseed oil, and 33,000 tons for peanut oil. Exports of vegetable oils rose 367,000 tons to 36.3 million, led by olive oil and rapeseed oil, up 102,000 tons and 110,000 tons respectively.

TABLE 1.
MAJOR OILSEEDS: WORLD SUPPLY AND DISTRIBUTION
(MILLION METRIC TONS)

	1997/98	1998/99	1999/00	PRELIM 2000/01	MAY 2001/02	JUNE 2001/02
PRODUCTION						
SOYBEAN	158.07	159.82	159.90	175.10	184.13	183.84
COTTONSEED	34.35	32.62	32.93	33.59	36.70	36.74
PEANUT	27.30	29.77	28.99	31.18	33.48	33.23
SUNFLOWERSEED	23.24	26.63	27.22	23.22	21.37	21.33
RAPSEED	33.23	35.89	42.47	37.52	35.86	36.16
COPRA	5.33	4.38	5.46	5.90	5.23	5.26
PALM KERNEL	5.05	5.62	6.41	6.94	7.32	7.31
TOTAL	286.57	294.72	303.37	313.45	324.08	323.87
EXPORTS						
SOYBEAN	40.46	38.72	46.68	55.17	57.34	57.49
COTTONSEED	0.99	1.02	1.33	1.42	1.35	1.45
PEANUT	1.41	1.31	1.65	1.41	1.61	1.64
SUNFLOWERSEED	3.93	4.36	3.39	3.43	2.03	2.07
RAPSEED	6.90	9.31	11.17	9.81	7.78	7.93
COPRA	0.26	0.24	0.25	0.19	0.18	0.18
PALM KERNEL	0.06	0.06	0.05	0.06	0.06	0.06
TOTAL	54.00	55.01	64.52	71.48	70.36	70.82
IMPORTS						
SOYBEAN	39.92	40.72	47.97	55.26	57.74	58.02
COTTONSEED	0.95	0.97	1.31	1.30	1.23	1.29
PEANUT	1.39	1.35	1.46	1.37	1.54	1.56
SUNFLOWERSEED	4.05	4.39	3.52	3.22	1.94	2.14
RAPSEED	6.76	9.09	10.97	9.39	7.80	7.63
COPRA	0.20	0.25	0.23	0.18	0.23	0.18
PALM KERNEL	0.05	0.05	0.05	0.05	0.05	0.05
TOTAL	53.32	56.81	65.49	70.77	70.54	70.87
CRUSH						
SOYBEAN	124.24	135.85	136.23	147.67	158.40	157.81
COTTONSEED	25.87	24.98	25.05	24.45	26.49	26.49
PEANUT	13.86	14.79	13.63	14.19	15.90	15.77
SUNFLOWERSEED	20.87	23.13	23.99	20.86	19.03	19.09
RAPSEED	31.20	31.86	37.17	35.41	33.96	33.69
COPRA	5.32	4.41	5.41	5.83	5.22	5.20
PALM KERNEL	5.06	5.58	6.36	6.87	7.24	7.24
TOTAL	226.43	240.59	247.83	255.27	266.24	265.28
ENDING STOCKS						
SOYBEAN	25.02	26.55	26.97	29.34	29.45	29.43
COTTONSEED	0.66	0.50	0.39	0.53	0.63	0.63
PEANUT	0.57	0.79	0.73	0.76	0.89	0.88
SUNFLOWERSEED	0.99	1.42	1.75	0.90	0.60	0.63
RAPSEED	1.08	2.23	4.12	2.47	1.41	1.71
COPRA	0.09	0.04	0.03	0.03	0.02	0.02
PALM KERNEL	0.14	0.13	0.12	0.14	0.15	0.15
TOTAL	28.55	31.67	34.11	34.16	33.14	33.44

NOTE: TOTALS MAY NOT ADD DUE TO ROUNDING. FOR NOTES AND DESCRIPTION
OF AREAS DESIGNATED SEE PAGE FOLLOWING TABLE 8.

SOURCE: COUNSELOR AND ATTACHE REPORTS
OFFICIAL STATISTICS, USDA ESTIMATES
DATE: June 2002

FOREIGN AGRICULTURAL SERVICE
COTTON, OILSEEDS, TOBACCO
and SEEDS DIVISION

TABLE 2.
MAJOR PROTEIN MEALS: WORLD SUPPLY AND DISTRIBUTION
(MILLION METRIC TONS)

	1997/98	1998/99	1999/00	PRELIM 2000/01	MAY 2001/02	JUNE 2001/02
PRODUCTION						
SOYBEAN	98.85	107.65	107.88	117.24	125.35	124.81
COTTONSEED	11.79	11.36	11.43	11.25	12.03	12.01
RAPESEED	18.85	19.09	22.29	21.23	20.44	20.20
SUNFLOWERSEED	9.52	10.56	10.74	9.43	8.57	8.61
FISH	4.97	5.80	6.29	5.66	5.56	5.54
PEANUT	5.41	5.76	5.27	5.52	6.19	6.14
COPRA	1.74	1.44	1.76	1.89	1.70	1.68
PALM KERNEL	2.67	2.93	3.35	3.61	3.80	3.80
TOTAL	153.78	164.59	169.01	175.81	183.64	182.78
EXPORTS						
SOYBEAN	36.95	39.10	39.55	41.02	44.17	44.36
COTTONSEED	0.62	0.60	0.63	0.61	0.72	0.80
RAPESEED	4.58	3.95	4.61	3.97	3.52	3.51
SUNFLOWERSEED	3.10	3.73	3.30	2.79	2.47	2.55
FISH	2.47	3.35	3.96	3.60	3.31	3.28
PEANUT	0.49	0.31	0.32	0.34	0.41	0.46
COPRA	1.01	0.67	0.84	1.21	0.97	0.96
PALM KERNEL	2.56	2.70	2.96	3.24	3.38	3.40
TOTAL	51.78	54.40	56.15	56.78	58.95	59.31
IMPORTS						
SOYBEAN	37.57	38.90	39.48	41.38	44.08	44.32
COTTONSEED	0.57	0.56	0.53	0.59	0.68	0.67
RAPESEED	4.42	3.88	4.33	3.67	3.46	3.38
SUNFLOWERSEED	2.96	3.33	3.17	2.88	2.52	2.67
FISH	2.64	3.22	3.90	3.63	3.40	3.55
PEANUT	0.44	0.29	0.28	0.27	0.28	0.27
COPRA	1.02	0.69	0.89	1.19	1.09	1.08
PALM KERNEL	2.62	2.77	2.69	2.99	3.08	3.17
TOTAL	52.24	53.63	55.27	56.59	58.60	59.11
CONSUMPTION						
SOYBEAN	99.32	106.29	108.82	117.63	125.11	124.60
COTTONSEED	11.69	11.39	11.36	11.24	12.02	11.89
RAPESEED	18.75	19.11	22.05	21.01	20.42	20.08
SUNFLOWERSEED	9.41	10.11	10.61	9.61	8.67	8.74
FISH	5.12	5.67	6.27	6.00	5.68	5.82
PEANUT	5.34	5.75	5.23	5.46	6.06	5.96
COPRA	1.70	1.47	1.78	1.90	1.85	1.83
PALM KERNEL	2.81	2.97	3.03	3.38	3.52	3.59
TOTAL	154.13	162.76	169.14	176.21	183.32	182.50
ENDING STOCKS						
SOYBEAN	3.84	5.00	3.99	3.97	3.98	4.15
COTTONSEED	0.19	0.13	0.11	0.09	0.08	0.08
RAPESEED	0.44	0.36	0.32	0.23	0.23	0.22
SUNFLOWERSEED	0.27	0.31	0.31	0.22	0.20	0.21
FISH	0.65	0.66	0.63	0.32	0.32	0.30
PEANUT	0.04	0.03	0.03	0.02	0.01	0.01
COPRA	0.17	0.16	0.19	0.16	0.14	0.14
PALM KERNEL	0.21	0.24	0.29	0.28	0.26	0.26
TOTAL	5.82	6.88	5.87	5.28	5.22	5.36

NOTE: TOTALS MAY NOT ADD DUE TO ROUNDING. FOR NOTES AND DESCRIPTION OF AREAS DESIGNATED SEE PAGE FOLLOWING TABLE 8.

SOURCE: COUNSELOR AND ATTACHE REPORTS
OFFICIAL STATISTICS, USDA ESTIMATES
DATE: June 2002

FOREIGN AGRICULTURAL SERVICE
COTTON, OILSEEDS, TOBACCO
and SEEDS DIVISION

TABLE 3.
MAJOR VEGETABLE OILS: WORLD SUPPLY AND DISTRIBUTION
(MILLION METRIC TONS)

	1997/98	1998/99	1999/00	PRELIM 2000/01	MAY 2001/02	JUNE 2001/02
PRODUCTION						
SOYBEAN	22.57	24.68	24.77	26.95	28.78	28.64
PALM	16.97	19.25	21.80	24.07	25.08	25.08
SUNFLOWERSEED	8.30	9.24	9.65	8.42	7.66	7.68
RAPESEED	11.43	11.81	13.68	13.05	12.53	12.40
COTTONSEED	3.70	3.57	3.57	3.51	3.80	3.79
PEANUT	4.18	4.44	4.15	4.30	4.79	4.76
COCONUT	3.29	2.71	3.34	3.63	3.28	3.27
OLIVE	2.53	2.50	2.37	2.48	2.35	2.53
PALM KERNEL	2.20	2.40	2.73	3.01	3.15	3.15
TOTAL	75.16	80.59	86.04	89.41	91.42	91.29
EXPORTS						
SOYBEAN	7.21	8.17	7.28	7.93	8.66	8.68
PALM 1/	11.16	12.74	14.34	16.78	17.61	17.67
SUNFLOWERSEED	3.58	3.81	3.77	2.98	2.61	2.66
RAPESEED	3.02	2.98	2.97	2.63	2.43	2.54
COTTONSEED	0.25	0.16	0.18	0.17	0.15	0.16
PEANUT	0.26	0.26	0.31	0.31	0.29	0.31
COCONUT	2.17	1.37	1.83	1.98	1.84	1.85
OLIVE	1.02	1.06	1.05	1.15	1.01	1.11
PALM KERNEL	1.09	0.90	0.98	1.09	1.29	1.27
TOTAL	29.76	31.45	32.70	35.02	35.88	36.25
IMPORTS						
SOYBEAN	6.81	7.89	7.12	7.76	8.66	8.54
PALM 1/	10.77	12.27	14.05	17.04	17.42	17.66
SUNFLOWERSEED	3.32	3.56	3.42	2.99	2.45	2.51
RAPESEED	2.69	2.61	2.69	2.60	2.23	2.46
COTTONSEED	0.23	0.19	0.18	0.17	0.14	0.15
PEANUT	0.28	0.27	0.25	0.26	0.26	0.25
COCONUT	1.97	1.35	1.68	1.96	1.93	1.74
OLIVE	0.99	1.04	0.98	1.12	1.00	1.09
PALM KERNEL	0.92	1.04	1.03	1.07	1.27	1.10
TOTAL	27.97	30.20	31.39	34.96	35.35	35.51
CONSUMPTION						
SOYBEAN	22.26	24.58	24.30	26.56	28.92	28.55
PALM	16.86	17.85	20.95	24.27	25.24	25.32
SUNFLOWERSEED	8.20	8.70	9.16	8.60	7.66	7.78
RAPESEED	11.03	11.39	13.28	12.85	12.41	12.54
COTTONSEED	3.69	3.61	3.58	3.49	3.79	3.79
PEANUT	4.22	4.45	4.10	4.25	4.76	4.70
COCONUT	3.12	2.84	3.19	3.53	3.41	3.20
OLIVE	2.29	2.46	2.45	2.56	2.48	2.54
PALM KERNEL	2.03	2.50	2.73	2.84	3.16	3.01
TOTAL	73.70	78.38	83.74	88.94	91.83	91.42
ENDING STOCKS						
SOYBEAN	2.35	2.17	2.47	2.70	2.53	2.65
PALM	1.64	2.57	2.90	2.77	2.40	2.32
SUNFLOWERSEED	0.57	0.75	0.82	0.66	0.39	0.47
RAPESEED	0.45	0.49	0.61	0.76	0.46	0.54
COTTONSEED	0.08	0.06	0.05	0.06	0.06	0.06
PEANUT	0.04	0.04	0.03	0.03	0.03	0.03
COCONUT	0.32	0.17	0.17	0.25	0.21	0.21
OLIVE	0.95	0.98	0.83	0.72	0.61	0.69
PALM KERNEL	0.21	0.23	0.29	0.44	0.40	0.41
TOTAL	6.60	7.46	8.16	8.39	7.09	7.39

NOTE: TOTALS MAY NOT ADD DUE TO ROUNDING. FOR NOTES AND DESCRIPTION OF AREAS
DESIGNATED SEE PAGE FOLLOWING TABLE 8.

1/ PALM OIL TRADE EXCLUDES TRANSSHIPMENTS THROUGH SINGAPORE.

SOURCE: COUNSELOR AND ATTACHE REPORTS
OFFICIAL STATISTICS, USDA ESTIMATES

DATE: June 2002

FOREIGN AGRICULTURAL SERVICE
COTTON, OILSEEDS, TOBACCO
and SEEDS DIVISION

TABLE 4.
MAJOR OILSEEDS: 1/
AREA, YIELD, AND PRODUCTION BY MAIN PRODUCERS

	AVERAGE 1995/96-1999/00			PRELIMINARY 2000/01			FORECAST 2001/02		
	AREA 2/	YIELD 3/	PROD 4/	AREA 2/	YIELD 3/	PROD 4/	AREA 2/	YIELD 3/	PROD 4/
SOYBEAN									
UNITED STATES	27.27	2.52	68.79	29.30	2.56	75.06	29.54	2.66	78.67
BRAZIL	12.45	2.40	29.89	13.93	2.80	39.00	16.35	2.66	43.50
CHINA	8.09	1.75	14.18	9.20	1.67	15.40	9.10	1.70	15.45
ARGENTINA	7.18	2.35	16.87	10.40	2.67	27.80	11.30	2.61	29.50
EUROPEAN UNION	0.39	3.21	1.27	0.35	3.04	1.05	0.39	3.10	1.21
PARAGUAY	1.17	2.41	2.82	1.35	2.61	3.52	1.42	2.18	3.10
OTHER	10.56	1.25	13.17	10.73	1.24	13.28	10.88	1.14	12.41
TOTAL	67.11	2.19	146.98	75.27	2.33	175.10	78.98	2.33	183.84
COTTONSEED									
CHINA	4.56	1.73	7.88	4.06	1.96	7.96	4.82	1.98	9.56
UNITED STATES	5.38	1.10	5.92	5.28	1.11	5.84	5.60	1.21	6.76
FSU-12	2.51	1.19	2.98	2.41	1.13	2.73	2.49	1.23	3.07
INDIA	9.03	0.61	5.48	8.12	0.60	4.90	8.71	0.59	5.10
PAKISTAN	3.00	1.12	3.37	2.93	1.22	3.57	3.13	1.11	3.48
BRAZIL	0.81	0.92	0.74	0.85	1.78	1.52	0.75	1.69	1.27
OTHER	7.40	0.99	7.36	7.33	0.97	7.07	7.41	1.01	7.49
TOTAL	32.69	1.03	33.73	30.97	1.08	33.59	32.91	1.12	36.74
PEANUT									
INDIA	7.78	0.95	7.39	8.10	0.70	5.70	8.20	0.93	7.60
CHINA	3.89	2.80	10.90	4.86	2.97	14.44	4.90	2.95	14.47
UNITED STATES	0.58	2.87	1.67	0.54	2.74	1.48	0.57	3.40	1.94
SENEGAL	0.73	0.90	0.66	1.03	0.97	1.00	0.92	0.98	0.90
SUDAN	0.55	0.67	0.37	0.55	0.67	0.37	0.55	0.67	0.37
BRAZIL	0.09	1.77	0.16	0.10	1.92	0.20	0.10	2.01	0.20
ARGENTINA	0.29	1.49	0.43	0.25	1.57	0.40	0.22	1.51	0.33
SOUTH AFRICA	0.09	1.57	0.15	0.17	1.58	0.26	0.09	1.86	0.18
OTHER	6.93	0.98	6.76	7.05	1.04	7.34	7.10	1.02	7.25
TOTAL	20.94	1.36	28.50	22.64	1.38	31.18	22.65	1.47	33.23
SUNFLOWERSEED									
FSU-12	6.94	0.89	6.17	7.95	0.98	7.76	6.68	0.80	5.34
ARGENTINA	3.36	1.76	5.92	1.89	1.62	3.05	1.98	1.87	3.70
EASTERN EUROPE	2.11	1.33	2.81	1.89	1.10	2.08	1.66	1.33	2.21
UNITED STATES	1.26	1.50	1.89	1.07	1.50	1.61	1.04	1.51	1.58
CHINA	0.85	1.66	1.41	1.20	1.63	1.95	1.18	1.50	1.77
EUROPEAN UNION	2.27	1.56	3.55	1.92	1.73	3.31	1.93	1.56	3.01
OTHER	4.19	0.86	3.58	4.42	0.78	3.46	4.72	0.79	3.73
TOTAL	20.98	1.21	25.33	20.33	1.14	23.22	19.19	1.11	21.33
RAPSEED									
CHINA	6.71	1.40	9.40	7.49	1.52	11.38	8.05	1.41	11.32
EUROPEAN UNION	3.00	3.02	9.05	3.04	2.98	9.06	3.03	2.95	8.92
CANADA	4.92	1.40	6.87	4.82	1.48	7.13	3.89	1.31	5.10
INDIA	6.47	0.86	5.58	5.02	0.74	3.73	5.25	0.86	4.50
EASTERN EUROPE	0.93	2.12	1.98	1.11	2.05	2.28	1.10	2.43	2.68
OTHER	2.50	1.06	2.64	3.62	1.09	3.95	3.11	1.17	3.64
TOTAL	24.53	1.45	35.51	25.11	1.49	37.52	24.42	1.48	36.16
TOTAL OILSEEDS	166.24	1.62	270.05	174.32	1.72	300.61	178.15	1.75	311.30

1/ SPLIT YEAR INCLUDES NORTHERN HEMISPHERE CROPS HARVESTED IN THE LATE MONTHS OF THE FIRST YEAR SHOWN COMBINED WITH SOUTHERN HEMISPHERE AND CERTAIN NORTHERN HEMISPHERE CROPS HARVESTED IN THE EARLY MONTHS OF THE FOLLOWING YEAR.

2/ IN MILLION HECTARES. 3/ IN TONS PER HECTARE. 4/ IN MILLION METRIC TONS.

SOURCE: COUNSELOR AND ATTACHE REPORTS
OFFICIAL STATISTICS, USDA ESTIMATES
DATE: June 2002

FOREIGN AGRICULTURAL SERVICE
COTTON, OILSEEDS, TOBACCO
and SEEDS DIVISION

TABLE 5
SOYBEANS: WORLD SUPPLY AND DISTRIBUTION
(MILLION METRIC TONS)

	1997/98	1998/99	1999/00	PRELIM 2000/01	MAY 2001/02	JUNE 2001/02
PRODUCTION						
UNITED STATES	73.18	74.60	72.22	75.06	78.67	78.67
BRAZIL	32.50	31.30	34.20	39.00	43.50	43.50
ARGENTINA	19.50	20.00	21.20	27.80	29.50	29.50
CHINA	14.73	15.15	14.29	15.40	15.45	15.45
INDIA	5.35	6.00	5.20	5.25	5.60	5.40
PARAGUAY	2.99	3.05	2.90	3.52	3.10	3.10
OTHER	9.82	9.72	9.89	9.07	8.31	8.22
TOTAL	158.07	159.82	159.90	175.10	184.13	183.84
EXPORTS						
UNITED STATES	23.76	21.90	26.54	27.21	27.76	28.17
BRAZIL	8.75	8.93	11.16	15.47	17.10	16.80
ARGENTINA	3.23	3.23	4.13	7.42	7.70	7.55
PARAGUAY	2.39	2.35	2.12	2.55	2.11	2.11
OTHER	2.33	2.30	2.73	2.53	2.67	2.86
TOTAL	40.46	38.72	46.68	55.17	57.34	57.49
IMPORTS						
EUROPEAN UNION	17.26	16.79	15.66	18.93	20.72	20.68
GERMANY	4.00	4.10	3.44	4.57	4.64	4.70
NETHERLANDS	4.88	5.01	5.26	5.66	6.00	6.20
SPAIN	3.04	3.05	2.74	3.17	3.40	3.40
ITALY	0.85	0.72	0.80	0.84	1.05	0.82
BEL-LUX	1.28	1.24	1.20	1.43	1.63	1.69
PORTUGAL	0.77	0.64	0.62	0.90	1.00	1.05
EASTERN EUROPE	0.19	0.14	0.06	0.16	0.20	0.20
FSU-12	0.21	0.33	0.10	0.08	0.19	0.19
ASIA	13.71	15.18	22.43	25.75	24.69	24.65
CHINA	2.94	3.85	10.10	13.25	11.00	11.00
JAPAN	4.87	4.81	4.91	4.77	5.00	5.00
KOREA, REP OF	1.34	1.40	1.61	1.39	1.45	1.45
TAIWAN	2.39	2.15	2.30	2.33	2.40	2.40
INDONESIA	0.83	1.13	1.42	1.26	1.68	1.68
MID-EAST/N AFR	1.24	1.56	1.86	2.35	2.87	2.93
LATIN AMERICA	6.57	5.86	6.65	6.91	7.39	7.52
MEXICO	3.48	3.76	3.95	4.37	4.70	4.80
BRAZIL	0.90	0.60	1.00	0.90	0.90	0.90
OTHER	0.74	0.86	1.20	1.08	1.69	1.86
TOTAL	39.92	40.72	47.97	55.26	57.74	58.02
CRUSH						
UNITED STATES	43.46	43.26	42.94	44.65	45.99	46.13
LATIN AMERICA	38.38	44.59	44.89	47.05	51.16	51.39
BRAZIL	19.90	21.01	21.20	22.62	23.40	23.50
ARGENTINA	12.89	17.51	17.08	17.30	20.20	20.20
MEXICO	3.60	3.95	4.10	4.45	4.75	4.85
EUROPEAN UNION	16.15	16.24	14.43	16.97	19.12	18.26
FSU-12	0.40	0.51	0.41	0.48	0.59	0.59
EASTERN EUROPE	0.47	0.41	0.45	0.38	0.54	0.54
ASIA	21.76	26.89	28.74	33.53	35.95	35.72
JAPAN	3.72	3.70	3.75	3.78	3.89	3.89
CHINA	8.45	12.61	15.07	18.90	20.60	20.60
TAIWAN	2.04	1.90	1.99	2.13	2.15	2.15
INDIA	4.77	5.40	4.40	4.53	4.80	4.63
OTHER	3.61	3.95	4.38	4.61	5.06	5.19
TOTAL	124.24	135.85	136.23	147.67	158.40	157.81
ENDING STOCKS						
UNITED STATES	5.44	9.48	7.90	6.74	7.08	6.52
BRAZIL	6.80	6.80	7.65	7.21	8.70	8.90
ARGENTINA	7.17	6.03	5.52	7.93	8.74	8.89
OTHER	5.61	4.24	5.90	7.46	4.92	5.11
TOTAL	25.02	26.55	26.97	29.34	29.45	29.43
U.S. SEASON AVG.PRICE (\$/bu)	6.47	4.93	4.63	4.54	4.25	4.25

NOTE: TOTALS MAY NOT ADD DUE TO ROUNDING. FOR NOTES AND DESCRIPTION OF PRICES AND AREAS DESIGNATED SEE PAGE FOLLOWING TABLE 8.

1/ BRAZIL AND ARGENTINA ESTIMATES HAVE BEEN ADJUSTED TO A CONSISTANT OCT-SEPT YEAR; ESTIMATES OF OTHER COUNTRIES (INCLUDING THE U.S.) ARE ON A LOCAL MARKETING YEAR.

SOURCE: COUNSELOR AND ATTACHE REPORTS
OFFICIAL STATISTICS, USDA ESTIMATES
DATE: June 2002

FOREIGN AGRICULTURAL SERVICE
COTTON, OILSEEDS, TOBACCO
and SEEDS DIVISION

TABLE 6
SOYBEAN MEAL: WORLD SUPPLY AND DISTRIBUTION
(MILLION METRIC TONS)

	1997/98	1998/99	1999/00	PRELIM 2000/01	MAY 2001/02	JUNE 2001/02
PRODUCTION						
UNITED STATES	34.63	34.29	34.10	35.73	36.43	36.52
LATIN AMERICA	30.47	35.26	35.42	37.07	40.36	40.54
BRAZIL	15.73	16.60	16.75	17.87	18.57	18.65
ARGENTINA	10.30	13.85	13.45	13.65	15.91	15.91
MEXICO	2.87	3.15	3.25	3.53	3.77	3.85
EUROPEAN UNION	12.87	12.92	11.47	13.42	15.24	14.45
EASTERN EUROPE	0.50	0.37	0.35	0.29	0.41	0.41
FSU-12	0.32	0.40	0.33	0.38	0.51	0.51
ASIA	17.21	21.28	22.76	26.67	28.35	28.24
JAPAN	2.89	2.87	2.91	2.93	3.01	3.01
CHINA	6.72	10.02	11.98	15.30	16.50	16.50
TAIWAN	1.62	1.51	1.58	1.53	1.54	1.54
INDIA	3.80	4.30	3.52	3.61	3.75	3.69
OTHER	2.87	3.14	3.45	3.68	4.05	4.15
TOTAL	98.85	107.65	107.88	117.24	125.35	124.81
EXPORTS						
UNITED STATES	8.46	6.46	6.65	6.95	7.03	7.03
BRAZIL	9.59	9.83	9.93	10.68	10.88	10.95
ARGENTINA	9.85	13.40	13.75	13.60	15.48	15.48
EUROPEAN UNION	5.22	5.39	5.34	5.92	6.36	6.16
INDIA	2.60	2.80	2.38	2.35	2.40	2.50
OTHER	1.23	1.22	1.50	1.52	2.03	2.24
TOTAL	36.95	39.10	39.55	41.02	44.17	44.36
IMPORTS						
EUROPEAN UNION	17.09	19.93	19.81	20.18	21.43	21.03
FRANCE	3.65	4.11	4.15	4.39	4.60	4.60
GERMANY	2.05	2.06	1.93	2.11	2.25	1.84
NETHERLANDS	1.60	2.38	2.66	2.72	2.75	2.75
ITALY	1.85	2.15	2.20	2.63	2.78	3.00
EASTERN EUROPE	2.33	2.47	2.58	3.15	3.31	3.31
FSU-12	0.33	0.43	0.49	0.26	0.40	0.40
ASIA & OCEANIA	9.74	7.43	7.18	7.62	8.06	8.53
CHINA	4.20	1.40	0.63	0.10	0.03	0.03
PHILLIPINES	1.05	0.86	0.95	1.04	1.30	1.20
MID-EAST/N AFR	3.42	3.70	4.14	4.51	4.82	4.78
EGYPT	0.62	0.80	0.92	1.05	1.15	1.15
LATIN AMERICA	3.37	3.58	3.88	4.00	4.24	4.23
OTHER	1.29	1.34	1.41	1.66	1.82	2.05
TOTAL	37.57	38.90	39.48	41.38	44.08	44.32
CONSUMPTION						
UNITED STATES	26.21	27.81	27.53	28.75	29.56	29.76
LATIN AMERICA	13.19	14.19	15.31	15.96	16.97	17.06
BRAZIL	6.10	6.65	7.20	7.46	7.90	7.90
ARGENTINA	0.20	0.20	0.21	0.22	0.23	0.23
MEXICO	3.07	3.30	3.54	3.79	4.15	4.23
EUROPEAN UNION	24.74	27.27	25.97	27.81	30.21	29.26
FRANCE	4.05	4.43	4.38	4.89	5.42	5.42
GERMANY	3.67	4.17	3.60	4.18	4.47	4.20
NETHERLANDS	2.76	2.99	3.17	3.51	3.38	3.56
ITALY	3.12	3.38	3.22	3.51	3.87	3.86
SPAIN	3.92	4.67	4.38	4.43	5.01	4.68
FSU-12	0.65	0.76	0.84	0.69	0.89	0.89
EASTERN EUROPE	2.72	2.88	2.92	3.33	3.78	3.78
POLAND	0.96	0.85	0.89	1.10	1.36	1.36
ASIA & OCEANIA	24.63	25.64	27.61	31.68	33.47	33.51
JAPAN	3.67	3.65	3.66	3.56	3.99	4.04
CHINA	10.90	11.42	12.58	15.29	15.98	15.83
TAIWAN	1.63	1.55	1.67	1.56	1.58	1.58
KOREA, REP OF	1.82	1.98	2.09	2.29	2.08	2.41
MID-EAST/N AFR	4.43	4.90	5.57	6.05	6.82	6.82
OTHER	2.75	2.83	3.08	3.39	3.42	3.54
TOTAL	99.32	106.29	108.82	117.63	125.11	124.60
ENDING STOCKS						
UNITED STATES	0.20	0.30	0.27	0.35	0.25	0.25
BRAZIL	0.98	1.19	0.90	0.82	0.86	0.86
ARGENTINA	0.53	0.78	0.27	0.10	0.30	0.30
OTHER	2.14	2.73	2.56	2.70	2.58	2.74
TOTAL	3.84	5.00	3.99	3.97	3.98	4.15
U.S. SEASON AVG.PRICE (\$/s.t)	185.54	138.5	167.70	173.60	159	160

NOTE: TABLES MAY NOT ADD DUE TO ROUNDING. FOR NOTES AND DESCRIPTION OF PRICES AND AREAS DESIGNATED SEE PAGE FOLLOWING TABLE 8.

SOURCE: COUNSELOR AND ATTACHE REPORTS,
OFFICIAL STATISTICS, USDA ESTIMATES
DATE: June 2002

FOREIGN AGRICULTURAL SERVICE
COTTON, OILSEEDS, TOBACCO
and SEEDS DIVISION

TABLE 7
SOYBEAN OIL: WORLD SUPPLY AND DISTRIBUTION
(MILLION METRIC TONS)

	1997/98	1998/99	1999/00	PRELIM 2000/01	MAY 2001/02	JUNE 2001/02
PRODUCTION						
UNITED STATES	8.23	8.20	8.09	8.36	8.51	8.53
LATIN AMERICA	6.95	8.15	8.30	8.75	9.50	9.52
BRAZIL	3.74	3.93	4.03	4.34	4.50	4.52
ARGENTINA	2.24	3.16	3.13	3.19	3.70	3.70
MEXICO	0.61	0.67	0.70	0.76	0.81	0.81
EUROPEAN UNION	2.91	2.92	2.60	3.07	3.45	3.29
FSU-12	0.06	0.07	0.07	0.07	0.10	0.10
EASTERN EUROPE	0.08	0.07	0.08	0.07	0.09	0.09
ASIA	3.72	4.58	4.90	5.82	6.26	6.21
JAPAN	0.67	0.67	0.67	0.67	0.69	0.69
CHINA	1.38	2.05	2.48	3.24	3.55	3.55
TAIWAN	0.33	0.31	0.33	0.35	0.35	0.35
INDIA	0.86	0.97	0.79	0.82	0.86	0.84
OTHER	0.62	0.68	0.75	0.81	0.88	0.90
TOTAL	22.57	24.68	24.77	26.95	28.78	28.64
EXPORTS						
UNITED STATES	1.40	1.08	0.62	0.64	0.98	1.00
BRAZIL	1.19	1.38	1.20	1.53	1.55	1.57
ARGENTINA	2.10	3.14	3.04	3.21	3.48	3.48
EUROPEAN UNION	1.75	1.71	1.69	1.81	1.91	1.90
OTHER	0.77	0.87	0.74	0.75	0.74	0.72
TOTAL	7.21	8.17	7.28	7.93	8.66	8.68
IMPORTS						
UNITED STATES	0.03	0.04	0.04	0.03	0.03	0.03
EUROPEAN UNION	0.62	0.68	0.58	0.62	0.64	0.62
FSU-12	0.13	0.20	0.23	0.32	0.42	0.42
EASTERN EUROPE	0.13	0.15	0.13	0.18	0.22	0.22
ASIA	2.88	3.47	2.73	2.89	3.30	3.20
CHINA	1.65	0.95	0.56	0.08	0.15	0.15
INDIA	0.24	0.83	0.79	1.40	1.55	1.55
PAKISTAN	0.16	0.41	0.23	0.18	0.25	0.23
MID-EAST/N AFR	1.44	1.78	1.74	1.98	2.18	2.17
IRAN	0.70	0.96	0.76	0.92	0.93	0.93
MOROCCO	0.12	0.23	0.26	0.29	0.29	0.29
TURKEY	0.15	0.13	0.14	0.11	0.16	0.16
TUNISIA	0.13	0.14	0.15	0.16	0.18	0.18
LATIN AMERICA	1.23	1.30	1.33	1.27	1.36	1.36
BRAZIL	0.20	0.21	0.22	0.21	0.20	0.20
MEXICO	0.10	0.11	0.12	0.08	0.13	0.13
CHILE	0.09	0.08	0.09	0.09	0.09	0.09
PERU	0.22	0.15	0.13	0.13	0.14	0.14
COLOMBIA	0.14	0.12	0.12	0.14	0.15	0.15
OTHER	0.35	0.29	0.35	0.48	0.52	0.54
TOTAL	6.81	7.89	7.12	7.76	8.66	8.54
CONSUMPTION						
UNITED STATES	6.92	7.10	7.28	7.36	7.70	7.67
LATIN AMERICA	4.66	4.90	5.13	5.27	5.54	5.54
BRAZIL	2.75	2.85	3.00	3.12	3.20	3.20
ARGENTINA	0.10	0.11	0.11	0.11	0.12	0.12
MEXICO	0.68	0.77	0.79	0.83	0.93	0.93
EUROPEAN UNION	1.80	1.88	1.50	1.84	2.19	1.95
FSU-12	0.17	0.27	0.29	0.36	0.53	0.53
EASTERN EUROPE	0.19	0.21	0.20	0.23	0.30	0.30
ASIA	6.27	7.78	7.26	8.41	9.26	9.14
JAPAN	0.67	0.68	0.68	0.68	0.69	0.69
CHINA	2.95	3.08	2.87	3.27	3.69	3.68
TAIWAN	0.38	0.37	0.36	0.37	0.41	0.41
KOREA, REP OF	0.25	0.33	0.34	0.37	0.36	0.36
INDIA	1.10	1.81	1.58	2.22	2.41	2.39
PAKISTAN	0.16	0.41	0.24	0.21	0.30	0.28
BANGLADESH	0.26	0.47	0.48	0.50	0.55	0.51
MID-EAST/N AFR	1.55	1.79	1.93	2.22	2.50	2.49
IRAN	0.63	0.81	0.80	0.95	0.98	0.98
MOROCCO	0.16	0.27	0.29	0.34	0.34	0.34
TURKEY	0.18	0.14	0.15	0.12	0.18	0.18
OTHER	0.70	0.65	0.71	0.87	0.90	0.92
TOTAL	22.26	24.58	24.30	26.56	28.92	28.55
ENDING STOCKS						
UNITED STATES	0.63	0.69	0.91	1.31	1.16	1.20
BRAZIL	0.41	0.32	0.36	0.26	0.21	0.21
ARGENTINA	0.33	0.25	0.23	0.10	0.19	0.19
OTHER	0.98	0.91	0.98	1.03	0.96	1.05
TOTAL	2.35	2.17	2.47	2.70	2.53	2.65
U.S. SEASON AVG.PRICE (c/lb)	25.84	19.90	15.60	14.15	15.10	15.25

NOTE: TABLES MAY NOT ADD DUE TO ROUNDING. FOR NOTES AND DESCRIPTION OF PRICES AND AREAS DESIGNATED SEE PAGE FOLLOWING TABLE 8.

SOURCE: COUNSELOR AND ATTACHE REPORTS,
OFFICIAL STATISTICS, USDA ESTIMATES
DATE: June 2002

FOREIGN AGRICULTURAL SERVICE
COTTON, OILSEEDS, TOBACCO
and SEEDS DIVISION

TABLE 8
SOYBEANS AND PRODUCTS: WORLD TRADE
(1000 METRIC TONS)

EXPORTERS	MARKETING YEAR	SOYBEANS			SOYBEAN MEAL			SOYBEAN OIL		
		1999/00	2000/01	2001/02	1999/00	2000/01	2001/02	1999/00	2000/01	2001/02
UNITED STATES 1/	(OCT-SEP)	26,537	27,206	28,168	6,652	6,951	7,031	624	638	998
BRAZIL	(OCT-SEP)	11,161	15,470	16,800	9,932	10,679	10,950	1,200	1,530	1,572
ARGENTINA	(OCT-SEP)	4,131	7,415	7,550	13,745	13,600	15,481	3,036	3,211	3,484
EUROPEAN UNION	(OCT-SEP)	1,047	1,254	1,811	5,341	5,915	6,158	1,689	1,806	1,904
INDIA	(OCT-SEP)	0	0	0	2,375	2,350	2,500	0	0	0
PARAGUAY	(OCT-SEP)	2,120	2,550	2,110	450	520	515	93	115	105
OTHER	2/	1,687	1,275	1,046	1,050	1,000	1,724	642	630	617
WORLD TOTAL	2/	46,683	55,170	57,485	39,545	41,015	44,359	7,284	7,930	8,680
SELECTED IMPORTERS										
EUROPEAN UNION	(OCT-SEP)	15,663	18,934	20,676	19,806	20,184	21,025	584	619	619
GERMANY	(OCT-SEP)	3,444	4,567	4,700	1,933	2,110	1,840	51	56	70
NETHERLANDS	(OCT-SEP)	5,264	5,660	6,200	2,655	2,720	2,750	108	83	75
SPAIN	(OCT-SEP)	2,741	3,167	3,400	2,492	2,217	2,500	18	23	15
ITALY	(OCT-SEP)	804	836	820	2,200	2,632	3,000	10	22	30
BEL-LUX	(OCT-SEP)	1,203	1,429	1,685	1,283	1,413	1,450	225	242	245
PORTUGAL	(OCT-SEP)	623	903	1,050	545	280	270	20	6	2
FRANCE	(OCT-SEP)	467	896	1,200	4,154	4,394	4,600	35	59	60
U.K.	(OCT-SEP)	601	865	1,000	1,554	1,260	1,400	25	29	27
DENMARK	(OCT-SEP)	91	129	145	1,556	1,595	1,650	28	32	30
FSU-12	(OCT-SEP)	98	84	185	494	259	402	227	315	420
RUSSIA	(OCT-SEP)	65	20	50	365	165	250	225	315	420
UKRAINE	(OCT-SEP)	0	10	10	20	40	60	2	0	0
EASTERN EUROPE	(OCT-SEP)	57	157	200	2,578	3,145	3,310	125	183	215
POLAND	(OCT-SEP)	5	12	15	900	1,215	1,300	85	130	130
HUNGARY	(OCT-SEP)	2	5	5	680	770	810	2	5	20
ASIA	2/	22,433	25,745	24,651	6,901	7,308	8,114	2,730	2,891	3,199
CHINA	(OCT-SEP)	10,100	13,245	11,000	633	100	30	556	80	150
JAPAN	(OCT-SEP)	4,907	4,767	5,000	756	610	1,050	2	2	2
TAIWAN	(OCT-SEP)	2,300	2,330	2,400	73	35	50	45	12	50
KOREA, REP OF	(NOV-OCT)	1,606	1,389	1,450	1,087	1,414	1,500	120	166	155
INDONESIA	(OCT-SEP)	1,415	1,261	1,675	1,135	1,550	1,600	15	15	15
THAILAND	(OCT-SEP)	1,100	1,500	1,600	1,100	1,430	1,450	22	15	5
MALAYSIA	(OCT-SEP)	440	609	725	630	507	640	75	135	135
PHILIPPINES	(JAN-DEC)	360	365	375	949	1,039	1,200	24	9	10
INDIA	(OCT-SEP)	0	0	0	0	0	0	790	1,400	1,550
PAKISTAN	(OCT-SEP)	50	162	300	150	90	0	225	175	225
MID-EAST/N AFR	2/	1,863	2,352	2,933	4,136	4,509	4,780	1,736	1,979	2,166
ISRAEL	(OCT-SEP)	590	617	700	71	58	56	15	9	12
IRAN	(OCT-SEP)	510	630	803	390	450	477	760	920	932
EGYPT	(OCT-SEP)	230	334	575	916	1,050	1,145	278	320	350
MOROCCO	(OCT-SEP)	180	257	280	90	30	70	260	292	290
TUNISIA	(OCT-SEP)	0	0	0	250	275	290	145	160	175
ALGERIA	(JAN-DEC)	0	0	0	340	360	380	13	40	90
TURKEY	(NOV-OCT)	313	382	460	509	508	480	139	107	160
OTHER AFRICA	2/	100	101	112	465	508	547	275	347	404
SOUTH AFRICA	(JUN-JUL)	95	100	111	435	467	495	51	119	150
LATIN AMERICA	2/	6,650	6,907	7,518	3,882	4,001	4,229	1,334	1,265	1,357
MEXICO	(SEP-AUG)	3,950	4,374	4,800	285	246	380	118	83	125
VENEZUELA	(OCT-SEP)	400	209	220	550	664	600	280	197	200
CANADA	(AUG-JUL)	455	431	1,200	809	915	1,100	22	78	80
OTHER	2/	646	548	545	409	550	817	90	85	80
WORLD TOTAL	2/	47,965	55,259	58,020	39,480	41,379	44,324	7,123	7,762	8,540

NOTE: SEE FOLLOWING PAGE FOR COUNTRIES INCLUDED IN REGIONAL AREAS.

1/ SEP-AUG FOR SOYBEANS.

2/ AN AGGREGATE OF INDIVIDUAL MARKETING YEARS.

SOURCE: COUNSELOR AND ATTACHE REPORTS, OFFICIAL STATISTICS, USDA ESTIMATES

DATE: June 2002

FOREIGN AGRICULTURAL SERVICE
COTTON, OILSEEDS, TOBACCO

TABLE 9
VEGETABLE OIL PRODUCTION, CONSUMPTION AND IMPORTS
FOR SELECTED COUNTRIES, 1,000 METRIC TONS

		IMPORT MARKETING YEAR	1996/97	1997/98	1998/99	1999/00	PRELIM 2000/01	FORECAST 2001/02
INDIA	TOTAL PRODUCTION	MY	5,999	5,648	5,364	4,865	4,711	5,287
	TOTAL CONSUMPTION	MY	7,829	7,674	9,243	9,899	10,646	10,808
	TOTAL IMPORTS	MY	1,840	1,986	4,579	4,894	6,025	5,321
	PALM OIL	(OCT-SEP)	1,300	1,530	2,900	3,300	4,000	3,600
	SOYBEAN OIL	(OCT-SEP)	49	236	833	790	1,400	1,550
	SUNFLOWERSEED OIL	(OCT-SEP)	420	125	550	570	455	50
FSU-12	TOTAL PRODUCTION	MY	1,597	1,727	1,823	2,719	2,819	2,542
	TOTAL CONSUMPTION	MY	2,243	2,387	2,399	2,856	3,024	3,173
	TOTAL IMPORTS	MY	714	837	820	857	947	1,079
	PALM OIL	(OCT-SEP)	80	70	80	125	225	300
	SUNFLOWERSEED OIL	(SEP-AUG)	367	397	386	357	345	306
	SOYBEAN OIL	(OCT-SEP)	77	125	202	227	315	420
PAKISTAN	TOTAL PRODUCTION	MY	392	410	463	632	532	536
	TOTAL CONSUMPTION	MY	1,669	1,710	1,939	2,026	1,953	2,122
	TOTAL IMPORTS	MY	1,284	1,305	1,409	1,470	1,405	1,585
	PALM OIL	(OCT-SEP)	1,070	1,124	981	1,225	1,200	1,350
	SOYBEAN OIL	(OCT-SEP)	206	163	407	225	175	225
EGYPT	TOTAL PRODUCTION	MY	114	106	93	96	99	153
	TOTAL CONSUMPTION	MY	824	922	979	1,040	1,092	1,129
	TOTAL IMPORTS	MY	710	816	896	944	983	976
	SUNFLOWERSEED OIL	(OCT-SEP)	230	240	260	200	110	75
	COTTONSEED OIL	(OCT-SEP)	25	11	6	11	8	6
	PALM OIL	(OCT-SEP)	405	400	450	455	545	545
	SOYBEAN OIL	(OCT-SEP)	50	165	180	278	320	350
IRAN	TOTAL PRODUCTION	MY	54	51	112	149	168	191
	TOTAL CONSUMPTION	MY	905	941	1,137	1,174	1,265	1,315
	TOTAL IMPORTS	MY	921	1,000	1,240	1,100	1,200	1,236
	PALM OIL	(OCT-SEP)	90	100	105	140	170	224
	SOYBEAN OIL	(OCT-SEP)	401	700	960	760	920	932
	SUNFLOWERSEED OIL	(OCT-SEP)	430	200	175	200	110	80
ALGERIA	TOTAL PRODUCTION	MY	26	10	40	35	30	45
	TOTAL CONSUMPTION	MY	348	360	342	354	409	419
	TOTAL IMPORTS	MY	330	342	320	314	370	378
	SUNFLOWERSEED OIL	(JAN-DEC)	230	240	250	225	230	186
	RAPESEED OIL	(JAN-DEC)	30	15	47	33	25	2
MOROCCO	TOTAL PRODUCTION	MY	119	168	164	124	115	127
	TOTAL CONSUMPTION	MY	360	384	413	432	424	434
	TOTAL IMPORTS	MY	248	226	261	301	313	311
	SOYBEAN OIL	(OCT-SEP)	188	120	230	260	292	290
	RAPESEED OIL	(OCT-SEP)	50	30	10	10	5	5
NIGERIA	TOTAL PRODUCTION	MY	825	988	1,131	1,160	1,131	1,179
	TOTAL CONSUMPTION	MY	957	1,075	1,236	1,295	1,346	1,429
	TOTAL IMPORTS	MY	150	120	140	180	250	270
	PALM OIL	(OCT-SEP)	150	120	140	180	250	270
VENEZUELA	TOTAL PRODUCTION	MY	104	122	142	140	127	130
	TOTAL CONSUMPTION	MY	297	335	459	457	361	364
	TOTAL IMPORTS	MY	190	217	318	316	229	234
	SUNFLOWERSEED OIL	(OCT-SEP)	53	60	36	23	18	20
	SOYBEAN OIL	(OCT-SEP)	121	150	270	280	197	200
CHINA	TOTAL PRODUCTION	MY	6,650	7,069	8,311	9,799	10,645	10,705
	TOTAL CONSUMPTION	MY	9,831	10,336	10,785	11,528	12,473	13,458
	TOTAL IMPORTS	MY	3,389	3,437	2,458	1,911	1,968	2,808
	PALM OIL	(OCT-SEP)	1,350	1,300	1,275	1,200	1,579	2,400
	SOYBEAN OIL	(OCT-SEP)	1,674	1,650	950	556	80	150
	RAPESEED OIL	(OCT-SEP)	281	400	175	40	85	40
BANGLADESH	TOTAL PRODUCTION	MY	128	138	143	182	154	146
	TOTAL CONSUMPTION	MY	523	563	714	850	1,018	1,035
	TOTAL IMPORTS	MY	405	420	587	683	884	888
	SOYBEAN OIL	(OCT-SEP)	235	260	510	481	503	511
	PALM OIL	(OCT-SEP)	140	130	50	172	350	340
TOTAL OF SELECTED IMPORTERS	TOTAL PRODUCTION	MY	16,008	16,437	17,786	19,901	20,531	21,041
	TOTAL CONSUMPTION	MY	25,786	26,687	29,646	31,911	34,011	35,686
	TOTAL IMPORTS	MY	10,181	10,706	13,028	12,970	14,574	15,086
	PALM OIL	MY	4,621	4,803	6,011	6,853	8,408	9,143
	RAPESEED OIL	MY	540	724	613	373	216	98
	SOYBEAN OIL	MY	3,051	3,634	4,547	3,870	4,242	4,718
	SUNFLOWERSEED OIL	MY	1,749	1,349	1,695	1,625	1,313	742

NOTE: PRODUCTION IS OIL PROCESSED FROM DOMESTIC AND/OR IMPORTED OILSEEDS, PLUS OIL FROM OTHER DOMESTIC SOURCES (E.G. PALM OIL, FISH OIL). ANIMAL FATS ARE NOT INCLUDED. CONSUMPTION DATA MAY INCLUDE YEAR-TO-YEAR ADJUSTMENTS IN CASES WHERE STOCKS DATA ARE NOT AVAILABLE OR ARE NOT RELIABLE. TOTALS ARE FOR ALL COUNTRIES CONTAINED IN THE TABLE.

SOURCE: COUNSELOR AND ATTACHE REPORTS, OFFICIAL STATISTICS
USDA ESTIMATES

FOREIGN AGRICULTURAL SERVICE
COTTON, OILSEEDS, TOBACCO
and SEEDS DIVISION

DATE: June 2002

TABLE 10
 UNITED STATES: OILSEEDS AND PRODUCTS SUPPLY AND DISTRIBUTION
 LOCAL MARKETING YEARS
 (1,000 METRIC TONS)

	AREA HA	YIELD MT/HA	PROD	IMPORTS	EXPORTS	CRUSH	DOMESTIC CONS	ENDING STOCKS
MAJOR OILSEEDS								
1992/93(92)	29,618	2.311	68,442	116	21,742	39,462	46,586	8,972
1993/94(93)	30,132	1.973	59,463	551	16,524	39,218	45,784	6,678
1994/95(94)	32,183	2.476	79,671	510	23,865	43,994	52,721	10,273
1995/96(95)	33,536	2.058	69,026	466	23,872	42,572	49,842	6,051
1996/97(96)	32,555	2.296	74,755	594	24,746	44,135	52,000	4,654
1997/98(97)	35,351	2.351	83,095	670	24,519	48,889	57,455	6,445
1998/99(98)	35,275	2.392	84,365	684	22,721	47,814	57,993	10,780
1999/00(99)	37,149	2.216	82,315	759	27,395	47,902	57,474	8,985
2000/01(00)	36,805	2.307	84,891	816	28,079	49,021	58,793	7,820
2001/02(01)	37,343	2.406	89,857	531	29,200	50,593	61,143	7,865
MAJOR PROTEIN MEALS								
1992/93(92)	-	-	29,938	981	5,928	-	25,031	223
1993/94(93)	-	-	30,284	1,024	5,106	-	26,225	200
1994/95(94)	-	-	33,240	860	6,355	-	27,683	262
1995/96(95)	-	-	32,294	1,048	5,687	-	27,665	252
1996/97(96)	-	-	33,772	1,025	6,598	-	28,222	229
1997/98(97)	-	-	37,422	1,355	8,698	-	30,009	299
1998/99(98)	-	-	36,799	1,208	6,717	-	31,256	333
1999/00(99)	-	-	36,698	1,248	6,849	-	31,133	297
2000/01(00)	-	-	38,182	1,165	7,193	-	32,055	396
2001/02(01)	-	-	38,956	1,072	7,308	-	32,813	303
MAJOR VEGETABLE AND MARINE OILS								
1992/93(92)	-	-	7,252	1,326	1,063	-	7,804	991
1993/94(93)	-	-	7,382	1,345	1,093	-	7,851	774
1994/95(94)	-	-	8,486	1,294	1,953	-	7,862	739
1995/96(95)	-	-	8,169	1,279	977	-	8,059	1,151
1996/97(96)	-	-	8,333	1,554	1,515	-	8,580	943
1997/98(97)	-	-	9,505	1,644	2,044	-	9,064	984
1998/99(98)	-	-	9,430	1,412	1,637	-	9,190	999
1999/00(99)	-	-	9,371	1,539	1,133	-	9,562	1,214
2000/01(00)	-	-	9,502	1,687	1,059	-	9,653	1,691
2001/02(01)	-	-	9,684	1,480	1,473	-	9,876	1,506

NOTE: MAJOR OILSEEDS INCLUDE COTTONSEED, PEANUTS, RAPESEED, SOYBEANS, AND SUNFLOWERSEED
 MAJOR PROTEIN MEALS INCLUDE COPRA, COTTONSEED, FISH, PEANUT, RAPESEED, SOYBEAN, AND SUNFLOWERSEED
 MAJOR VEGETABLE AND FISH OILS INCLUDE COCONUT, COTTONSEED, FISH, OLIVE,
 PALM, PALM KERNEL, PEANUT, RAPESEED, SOYBEAN, AND SUNFLOWERSEED.

SOURCE: COUNSELOR AND ATTACHE REPORTS,
 OFFICIAL STATISTICS, USDA ESTIMATES
 JUNE

FOREIGN AGRICULTURAL SERVICE
 COTTON, OILSEEDS, TOBACCO
 and SEEDS DIVISION

TABLE 11
 UNITED STATES: SOYBEANS AND PRODUCTS SUPPLY AND DISTRIBUTION
 LOCAL MARKETING YEARS
 (1000 METRIC TONS)

	AREA HA	YIELD MT/HA	PROD	IMPORTS	EXPORTS	CRUSH	DOMESTIC CONS	ENDING STOCKS
SOYBEAN (SEP-AUG)								
1992/93(92)	23,566	2.530	59,612	56	20,972	34,808	38,319	7,955
1993/94(93)	23,191	2.194	50,885	175	16,006	34,716	37,318	5,691
1994/95(94)	24,609	2.781	68,444	149	22,867	38,242	42,305	9,112
1995/96(95)	24,906	2.376	59,174	121	23,108	37,273	40,306	4,993
1996/97(96)	25,637	2.527	64,780	242	24,110	39,080	42,317	3,588
1997/98(97)	27,968	2.616	73,176	135	23,760	43,464	47,701	5,438
1998/99(98)	28,507	2.617	74,598	82	21,898	43,262	48,736	9,484
1999/2000(99)	29,318	2.463	72,224	114	26,537	42,938	47,388	7,897
2000/2001(00)	29,303	2.561	75,055	97	27,206	44,652	49,100	6,743
2001/2002(01)	29,542	2.663	78,669	82	28,168	46,130	50,804	6,522
2002/2003(02)	29,222	2.673	78,109	109	26,263	46,539	51,272	7,205
SOYBEAN MEAL (OCT-SEP)								
1992/93(92)	-	-	27,546	84	5,673	-	21,981	185
1993/94(93)	-	-	27,682	63	4,867	-	22,927	136
1994/95(94)	-	-	30,182	58	6,092	-	24,081	203
1995/96(95)	-	-	29,508	68	5,446	-	24,140	193
1996/97(96)	-	-	31,035	92	6,344	-	24,785	191
1997/98(97)	-	-	34,633	51	8,464	-	26,213	198
1998/99(98)	-	-	34,285	90	6,461	-	27,812	300
1999/2000(99)	-	-	34,102	45	6,652	-	27,529	266
2000/2001(00)	-	-	35,733	46	6,951	-	28,746	348
2001/2002(01)	-	-	36,516	172	7,031	-	29,755	250
2002/2003(02)	-	-	36,886	59	6,759	-	30,209	227
SOYBEAN OIL (OCT-SEP)								
1992/93(92)	-	-	6,250	5	663	-	5,903	705
1993/94(93)	-	-	6,328	31	695	-	5,869	500
1994/95(94)	-	-	7,082	8	1,217	-	5,857	516
1995/96(95)	-	-	6,913	43	450	-	6,108	914
1996/97(96)	-	-	7,145	24	922	-	6,471	690
1997/98(97)	-	-	8,229	27	1,397	-	6,922	627
1998/99(98)	-	-	8,202	37	1,076	-	7,101	689
1999/2000(99)	-	-	8,085	37	624	-	7,282	905
2000/2001(00)	-	-	8,362	33	638	-	7,357	1,305
2001/2002(01)	-	-	8,532	26	998	-	7,665	1,200
2002/2003(02)	-	-	8,695	30	885	-	7,938	1102

SOURCE: COUNSELOR AND ATTACHE REPORTS,
 OFFICIAL STATISTICS, USDA ESTIMATES
 DATE: June 2002

FOREIGN AGRICULTURAL SERVICE
 COTTON, OILSEEDS, TOBACCO
 and SEEDS DIVISION

TABLE 12
 BRAZIL: SOYBEANS AND PRODUCTS SUPPLY AND DISTRIBUTION
 LOCAL MARKETING YEARS
 (1,000 METRIC TONS)

	AREA HA	YIELD MT/HA	PROD	IMPORTS	EXPORTS	CRUSH	DOMESTIC CONS	ENDING STOCKS
SOYBEANS (FEB-JAN)								
1993/94(92)	10,625	2.118	22,500	0	4,184	16,765	18,315	832
1994/95(93)	11,440	2.159	24,700	900	5,395	18,736	20,386	651
1995/96(94)	11,680	2.217	25,900	900	3,492	21,599	23,249	710
1996/97(95)	10,950	2.205	24,150	1,300	3,633	20,154	21,702	825
1997/98(96)	11,800	2.314	27,300	1,450	8,328	18,910	20,772	475
1998/99(97)	13,000	2.500	32,500	500	9,336	21,900	23,579	560
1999/2000(98)	12,900	2.426	31,300	700	8,973	21,600	23,117	470
2000/01(99)	13,600	2.515	34,200	800	11,779	21,450	23,091	600
2001/02(00)	13,934	2.799	39,000	900	15,520	22,690	24,380	600
2002/03(01)	16,350	2.661	43,500	900	18,300	24,250	25,990	710
SOYBEAN MEAL (FEB-JAN)								
1993/94(92)	-	-	13,161	0	9,301	-	3,801	526
1994/95(93)	-	-	14,726	0	10,519	-	4,299	434
1995/96(94)	-	-	16,977	0	11,471	-	5,300	640
1996/97(95)	-	-	15,841	100	10,900	-	5,300	381
1997/98(96)	-	-	14,863	300	9,800	-	5,400	344
1998/99(97)	-	-	17,235	138	10,850	-	6,535	332
1999/2000(98)	-	-	17,000	175	10,150	-	6,900	457
2000/01(99)	-	-	16,900	118	9,865	-	7,200	410
2001/02(00)	-	-	17,900	230	10,852	-	7,488	200
2002/03(01)	-	-	19,100	100	11,100	-	7,900	400
SOYBEAN OIL (FEB-JAN)								
1993/94(92)	-	-	3,154	93	771	-	2,342	257
1994/95(93)	-	-	3,522	320	1,556	-	2,399	144
1995/96(94)	-	-	4,061	162	1,643	-	2,500	224
1996/97(95)	-	-	3,749	175	1,320	-	2,630	198
1997/98(96)	-	-	3,521	200	1,075	-	2,676	168
1998/99(97)	-	-	4,096	200	1,418	-	2,827	219
1999/2000(98)	-	-	4,040	240	1,463	-	2,816	220
2000/01(99)	-	-	4,012	111	1,133	-	2,942	268
2001/02(00)	-	-	4,250	250	1,620	-	2,958	190
2002/03(01)	-	-	4,535	300	1,685	-	3,097	243

SOURCE: COUNSELOR AND ATTACHE REPORTS,
 OFFICIAL STATISTICS, USDA ESTIMATES
 DATE: June 2002

FOREIGN AGRICULTURAL SERVICE
 COTTON, OILSEEDS, TOBACCO
 and SEEDS DIVISION

TABLE 13
 ARGENTINA: SOYBEANS AND PRODUCTS SUPPLY AND DISTRIBUTION
 LOCAL MARKETING YEARS
 (1,000 METRIC TONS)

	AREA HA	YIELD MT/HA	PROD	IMPORTS	EXPORTS	CRUSH	DOMESTIC CONS	ENDING STOCKS
SOYBEANS (APR-MAR)								
1993/94(92)	4,900	2.316	11,350	0	2,274	8,667	9,121	155
1994/95(93)	5,400	2.296	12,400	0	2,957	8,718	9,276	322
1995/96(94)	5,700	2.193	12,500	0	2,614	9,280	9,843	365
1996/97(95)	5,980	2.079	12,430	10	2,014	9,927	10,515	276
1997/98(96)	6,200	1.806	11,200	650	725	10,423	10,993	408
1998/99(97)	6,954	2.804	19,500	1,250	3,231	16,750	17,362	565
1999/2000(98)	8,165	2.449	20,000	790	3,400	17,100	17,826	129
2000/01(99)	8,583	2.470	21,200	400	4,100	16,500	17,512	117
2001/02(00)	10,400	2.673	27,800	420	7,500	19,500	20,720	117
2002/03(01)	11,300	2.611	29,500	400	7,800	20,500	21,777	440
SOYBEAN MEAL (APR-MAR)								
1993/94(92)	-	-	6950	0	6844	-	175	161
1994/95(93)	-	-	7047	0	6731	-	185	292
1995/96(94)	-	-	7563	0	7150	-	190	515
1996/97(95)	-	-	7950	0	7781	-	195	489
1997/98(96)	-	-	8350	0	8350	-	200	289
1998/99(97)	-	-	13400	0	12950	-	205	534
1999/2000(98)	-	-	13500	0	13190	-	210	634
2000/01(99)	-	-	13125	0	13325	-	215	219
2001/02(00)	-	-	15500	0	15100	-	219	400
2002/03(01)	-	-	16200	0	15950	-	225	425
SOYBEAN OIL (APR-MAR)								
1993/94(92)	-	-	1499	0	1409	-	75	45
1994/95(93)	-	-	1508	0	1442	-	77	34
1995/96(94)	-	-	1605	0	1477	-	95	67
1996/97(95)	-	-	1717	0	1634	-	100	50
1997/98(96)	-	-	1960	0	1860	-	100	50
1998/99(97)	-	-	2970	0	2725	-	102	193
1999/2000(98)	-	-	3150	0	3060	-	103	180
2000/01(99)	-	-	3030	0	3075	-	104	31
2001/02(00)	-	-	3585	0	3410	-	120	86
2002/03(01)	-	-	3775	0	3650	-	126	85

SOURCE: COUNSELOR AND ATTACHE REPORTS,
 OFFICIAL STATISTICS, USDA ESTIMATES
 DATE: June 2002

FOREIGN AGRICULTURAL SERVICE
 COTTON, OILSEEDS, TOBACCO
 and SEEDS DIVISION

TABLE 14
 ARGENTINA: SUNFLOWERSEED AND PRODUCTS SUPPLY AND DISTRIBUTION
 LOCAL MARKETING YEARS
 (1,000 METRIC TONS)

	AREA HA	YIELD MT/HA	PROD	IMPORTS	EXPORTS	CRUSH	DOMESTIC CONS	ENDING STOCKS
SUNFLOWERSEED (MAR-FEB)								
1993/94(92)	2,300	1.348	3,100	0	200	2,850	2,900	136
1994/95(93)	2,070	1.860	3,850	0	580	3,240	3,290	116
1995/96(94)	2,800	2.107	5,900	0	884	4,951	5,011	121
1996/97(95)	3,200	1.750	5,600	0	550	5,000	5,060	111
1997/98(96)	2,900	1.862	5,400	0	100	5,175	5,235	176
1998/99(97)	3,331	1.651	5,500	0	453	4,975	5,035	188
1999/2000(98)	3,909	1.816	7,100	0	910	6,195	6,255	123
2000/01(99)	3,477	1.726	6,000	0	283	5,200	5,260	580
2001/02(00)	1,886	1.617	3,050	0	72	3,460	3,500	58
2002/03(01)	1,980	1.869	3,700	0	300	3,350	3,390	68
SUNFLOWERSEED MEAL (MAR-FEB)								
1993/94(92)	-	-	1,197	0	1,057	-	120	134
1994/95(93)	-	-	1,393	0	1,300	-	120	107
1995/96(94)	-	-	2,129	0	1,996	-	150	90
1996/97(95)	-	-	2,100	0	1,954	-	140	96
1997/98(96)	-	-	2,174	0	2,050	-	140	80
1998/99(97)	-	-	2,092	0	1,940	-	142	90
1999/2000(98)	-	-	2,573	0	2,420	-	150	93
2000/01(99)	-	-	2,160	0	1,950	-	175	128
2001/02(00)	-	-	1,435	0	1,280	-	189	94
2002/03(01)	-	-	1,390	0	1,220	-	185	79
SUNFLOWERSEED OIL (MAR-FEB)								
1993/94(92)	-	-	1,112	0	775	-	371	106
1994/95(93)	-	-	1,280	0	920	-	390	76
1995/96(94)	-	-	1,980	0	1,556	-	419	81
1996/97(95)	-	-	2,000	0	1,510	-	480	91
1997/98(96)	-	-	2,070	0	1,610	-	480	71
1998/99(97)	-	-	1,990	0	1,510	-	480	71
1999/2000(98)	-	-	2,450	0	1,835	-	561	125
2000/01(99)	-	-	2,140	0	1,634	-	560	71
2001/02(00)	-	-	1,440	0	910	-	546	55
2002/03(01)	-	-	1,390	0	863	-	525	57

SOURCE: COUNSELOR AND ATTACHE REPORTS,
 OFFICIAL STATISTICS, USDA ESTIMATES
 DATE: June 2002

FOREIGN AGRICULTURAL SERVICE
 COTTON, OILSEEDS, TOBACCO
 and SEEDS DIVISION

TABLE 15
EUROPEAN UNION:
OILSEEDS AND PRODUCTS SUPPLY AND DISTRIBUTION
(1,000 METRIC TONS)

	1997/98	1998/99	1999/00	2000/01 PRELIM	2001/02 FORECAST
OILSEED PRODUCTION					
RAPESEED	8,636	9,517	11,484	9,056	8,915
SUNFLOWERSEED	4,038	3,400	3,213	3,311	3,011
SOYBEANS	1,570	1,541	1,147	1,048	1,214
OTHER	726	720	836	761	779
TOTAL	14,970	15,178	16,680	14,176	13,919
PROTEIN MEAL CONSUMPTION 1/					
SOYBEAN	24,740	27,270	25,970	27,805	29,255
SUNFLOWERSEED	4,562	4,554	4,307	4,241	3,449
RAPESEED	5,447	5,657	6,125	5,472	5,280
CORN GLUTEN FEED/MEAL 2/	6,550	6,325	6,455	6,450	6,500
OTHER	4,049	4,026	4,231	4,656	4,832
TOTAL 3/	38,798	41,507	40,633	42,174	42,816
TOTAL SME 4/	40,254	42,711	41,808	43,162	43,848
OIL CONSUMPTION 1/					
SOYBEAN	1,799	1,879	1,500	1,839	1,952
OLIVE	1,694	1,798	1,773	1,817	1,835
SUNFLOWERSEED	2,020	1,925	1,872	2,046	1,929
RAPESEED	2,372	2,561	2,840	3,318	3,373
OTHER	3,421	3,312	3,758	4,420	4,567
TOTAL	11,306	11,475	11,743	13,440	13,656
IMPORTS(EX.INTRA TRADE) 5/					
SOYBEANS	16,616	16,026	14,502	18,063	19,853
SOYBEAN MEAL	13,640	16,425	16,524	17,282	18,085
SUNFLOWERSEED	2,113	2,764	2,211	2,042	1,254
EXPORTS(EX.INTRA TRADE) 5/ 6/					
SOYBEAN MEAL	1,239	1,282	1,272	1,844	2,191
SOYBEAN OIL	1,142	1,052	1,048	1,124	1,127
RAPESEED OIL	650	762	718	300	261

1/ AN AGGREGATE OF DIFFERENT MARKETING YEARS

2/ BASED ON EC IMPORT DATA ONLY

3/ CORN GLUTEN FEED/MEAL NOT INCLUDED

4/ 44-PERCENT SOYBEAN MEAL EQUIVALENT, INCLUDING CORN GLUTEN FEED/MEAL.

5/ OCTOBER-SEPTEMBER YEARS

SOURCE: COUNSELOR AND ATTACHE REPORTS
OFFICIAL STATISTICS
USDA ESTIMATES

DATE: June 2002

FOREIGN AGRICULTURAL SERVICE
COTTON, OILSEEDS, TOBACCO
and SEEDS DIVISION

TABLE 16
RUSSIA:
OILSEEDS AND PRODUCTS SUPPLY AND DISTRIBUTION
(1,000 METRIC TONS)

	1997/98	1998/99	1999/00	2000/01 PRELIM	2001/02 FORECAST
OILSEED PRODUCTION					
RAPSEED	71	125	135	148	113
SOYBEANS	280	297	334	342	350
SUNFLOWERSEED	2,831	3,000	4,150	3,915	2,700
TOTAL	3,182	3,422	4,619	4,405	3,163
PROTEIN MEAL CONSUMPTION					
SOYBEAN	320	561	660	500	590
SUNFLOWERSEED	613	720	985	995	920
RAPSEED	17	39	45	47	50
FISH	187	176	205	255	225
TOTAL 1/ TOTAL SME 2/	1,137 1,181	1,496 1,523	1,895 1,918	1,797 1,841	1,785 1,819
OIL CONSUMPTION					
SOYBEAN	100	239	280	343	503
COTTONSEED	8	1	3	1	1
SUNFLOWERSEED	960	1,005	1,185	1,280	1,120
RAPSEED	208	143	146	73	61
OTHER	70	80	125	227	298
TOTAL 1/	1,346	1,468	1,739	1,924	1,983
IMPORTS 3/					
SOYBEANS	14	200	65	20	50
SOYBEAN MEAL	160	350	365	165	250
SUNFLOWERSEED OIL	290	260	190	170	125
EXPORTS 3/					
SUNFLOWERSEED	950	890	855	730	50
SOYBEANS	57	80	45	15	5
SUNFLOWERSEED OIL	35	55	195	150	85
FISHMEAL	5	10	10	10	10

1/ AN AGGREGATE OF DIFFERENT MARKETING YEARS

2/ 44-PERCENT SOYBEAN MEAL EQUIVALENT

3/ ASSORTED MARKETING YEARS

SOURCE: COUNSELOR AND ATTACHE REPORTS
OFFICIAL STATISTICS
USDA ESTIMATES

FOREIGN AGRICULTURAL SERVICE
COTTON, OILSEEDS, TOBACCO
and SEEDS DIVISION

DATE: June 2002

TABLE 17
CHINA:
OILSEEDS AND PRODUCTS SUPPLY AND DISTRIBUTION
(1,000 METRIC TONS)

	1997/98	1998/99	1999/00	2000/01 PRELIM	2001/02 FORECAST
OILSEED PRODUCTION					
COTTONSEED	8,280	8,100	6,900	7,960	9,560
PEANUTS	9,648	11,886	12,639	14,440	14,470
RAPESEED	9,578	8,300	10,132	11,381	11,320
SOYBEANS	14,728	15,152	14,290	15,400	15,450
SUNFLOWERSEED	1,176	1,465	1,800	1,954	1,770
TOTAL	43,410	44,903	45,761	51,135	52,570
PROTEIN MEAL CONSUMPTION					
SOYBEAN	10,897	11,416	12,579	15,290	15,830
COTTONSEED	2,861	2,873	2,440	2,600	3,030
RAPESEED	5,529	5,570	6,909	7,190	6,850
PEANUT	1,998	2,411	2,506	2,645	2,635
OTHER	1,351	1,603	1,988	1,764	1,638
TOTAL 1/	22,636	23,873	26,422	29,489	29,983
TOTAL SME 2/	21,147	22,505	24,916	27,776	28,229
OIL CONSUMPTION					
SOYBEAN	2,953	3,080	2,871	3,265	3,680
COTTONSEED	945	963	850	900	1,090
PALM	1,300	1,275	1,200	1,579	2,400
RAPESEED	3,274	3,325	4,285	4,190	3,745
PEANUT	1,645	1,919	2,020	2,110	2,123
SUNFLOWER	169	183	199	215	215
OTHER	219	223	302	429	420
TOTAL 1/	10,505	10,968	11,727	12,688	13,673
IMPORTS 3/					
SOYBEANS	2,940	3,850	10,100	13,245	11,000
RAPESEED	288	2,150	3,675	2,360	800
FISHMEAL	448	650	1,000	750	625
SOYMEAL	4198	1400	633	100	30
PALM OIL	1,300	1,275	1,200	1,579	2,400
SOYBEAN OIL	1,650	950	556	80	150
RAPESEED OIL	400	175	40	85	40
EXPORTS 3/					
SOYBEANS	168	187	230	208	150
PEANUTS	175	360	540	450	525
SOYBEAN MEAL	18	7	29	110	700
COTTONSEED MEAL	100	72	145	100	250
RAPESEED MEAL	60	350	1,000	610	100
RAPESEED OIL	80	50	5	70	20

1/ AN AGGREGATE OF DIFFERENT MARKETING YEARS

2/ 44-PERCENT SOYBEAN MEAL EQUIVALENT

3/ ASSORTED MARKETING YEARS

SOURCE: COUNSELOR AND ATTACHE REPORTS
OFFICIAL STATISTICS
USDA ESTIMATES

FOREIGN AGRICULTURAL SERVICE
COTTON, OILSEEDS, TOBACCO
and SEEDS DIVISION

DATE: June 2002

TABLE 18
INDIA:
OILSEEDS AND PRODUCTS SUPPLY AND DISTRIBUTION
(1,000 METRIC TONS)

	1997/98	1998/99	1999/00	2000/01 PRELIM	2001/02 FORECAST
OILSEED PRODUCTION					
COTTONSEED	5,238	5,470	5,170	4,900	5,100
PEANUTS	7,580	7,450	5,500	5,700	7,600
RAPESEED	4,935	4,900	5,110	3,725	4,500
SOYBEANS	5,350	6,000	5,200	5,250	5,400
SUNFLOWERSEED	1,150	1,200	1,300	1,250	1,450
TOTAL	24,253	25,020	22,280	20,825	24,050
PROTEIN MEAL CONSUMPTION					
SOYBEAN	1,200	1,425	1,210	1,224	1,180
COTTONSEED	1,865	1,935	1,762	1,744	1,727
RAPESEED	2,400	2,440	2,720	2,450	2,305
PEANUT	2,325	2,400	1,735	1,790	2,310
OTHER	730	772	828	798	864
TOTAL 1/ TOTAL SME 2/	8,520 7,587	8,972 8,013	8,255 7,155	8,006 6,997	8,386 7,488
OIL CONSUMPTION					
SOYBEAN	1,095	1,805	1,582	2,215	2,385
COTTONSEED	584	618	569	570	573
PALM	1,600	2,310	3,500	4,100	3,775
RAPESEED	1,716	1,503	1,560	1,100	1,332
PEANUT	1,754	1,675	1,200	1,245	1,660
OTHER	925	1,332	1,488	1,416	1,083
TOTAL 1/	7,674	9,243	9,899	10,646	10,808
IMPORTS 3/					
SOYBEANS	0	0	0	0	0
SUNFLOWERSEED OIL	125	550	570	455	50
PALM OIL	1,530	2,900	3,300	4,000	3,600
SOYBEAN OIL	236	833	790	1,400	1,550
RAPESEED OIL	66	241	160	50	5
EXPORTS 3/					
PEANUTS	50	40	100	100	125
PEANUT MEAL	220	50	10	20	100
SOYBEAN MEAL	2,600	2,800	2,375	2,350	2,500
RAPESEED MEAL	1,000	160	130	50	350

1/ AN AGGREGATE OF DIFFERENT MARKETING YEARS

2/ 44-PERCENT SOYBEAN MEAL EQUIVALENT

3/ ASSORTED MARKETING YEARS

SOURCE: COUNSELOR AND ATTACHE REPORTS
OFFICIAL STATISTICS
USDA ESTIMATES
DATE: June 2002

FOREIGN AGRICULTURAL SERVICE
COTTON, OILSEEDS, TOBACCO
and SEEDS DIVISION

TABLE 19
MALAYSIA: PALM OIL SUPPLY AND DISTRIBUTION
(1,000 METRIC TONS)

YEAR	BEGINNING STOCKS	PRODUCTION 1/	EXPORTS 6/	CONSUMPTION 2/	ENDING STOCKS
1985/86	530	4,773	4,065	625	613
1986/87	613	4,560	3,977	544	652
1987/88	652	4,852	4,128	692	684
1988/89	684	5,636	4,670	763	887
1989/90	887	6,412	5,520	882	912
1990/91	912	6,033	5,436	915	817
1991/92	817	6,222	5,552	1,020	656
1992/93	656	7,125	5,740	1,274	1,026
1993/94	1,026	7,100	6,500	1,227	627
1994/95	627	7,771	6,634	1,170	646
1995/96					
OCT-DEC		2,156	1,650		
JAN-MAR		1,637	1,519		
APR-JUN		2,060	1,640		
JUL-SEP		2,402	1,930		
TOTAL 3/	646	8,264	6,660	1,370	894
1996/97					
OCT-DEC		2,286	2,005		
JAN-MAR		1,768	1,505		
APR-JUN		2,322	1,814		
JUL-SEP		2,629	2,069		
TOTAL 3/	894	9,005	7,544	1,458	907
1997/98					
OCT-DEC		2,343	1,883		
JAN-MAR		1,714	1,764		
APR-JUN		1,961	1,658		
JUL-SEP		2,490	2,116		
TOTAL 3/	907	8,508	7,421	1,366	719
1998/99					
OCT-DEC		2,149	1,794		
JAN-MAR		1,771	1,561		
APR-JUN		2,865	2,105		
JUL-SEP		2,973	2,433		
TOTAL 3/	719	9,758	8,100	1,459	1,208
1999/2000					
OCT-DEC		2,943	2,520		
JAN-MAR		2,225	2,030		
APR-JUN		2,415	1,875		
JUL-SEP		2,908	2,050		
TOTAL 3/	1,208	10,491	8,845	1,594	1,368
2000/2001					
OCT-DEC		3,290	2,567		
JAN-MAR		2,836	2,562		
APR-JUN		2,832	2,557		
JUL-SEP		2,979	2,405		
TOTAL 3,4/	1,368	11,937	10,475	1,671	1,216
2001/2002					
OCT-DEC		3,155	2,830		
JAN-MAR		2,601	2,390		
APR-JUN		2,760	2,400		
JUL-SEP					
TOTAL 5/	1,216	11,900	10,600	1,666	950

1/TOTALS ARE BASED ON AN OCTOBER-SEPTEMBER BASIS.

2/ UTILIZATION INCLUDES EXPORTS OF FURTHER PROCESSED PRODUCTS AND REFINING LOSSES AND THEREFORE IS HIGHER THAN THE ACTUAL LEVEL.

3/ QUARTERLY EXPORT DATA MAY NOT ADD TO YEAR TOTAL BECAUSE QUARTERLY IMPORT DATA IS NOT AVAILABLE AND MARKETING YEAR EXPORTS REPRESENT NET EXPORTS.

4/ PRELIMINARY

5/ FORECAST

6/ NET EXPORTS: EXCLUDING PALM AND FATTY ACID DISTILLATES.

SOURCE: COUNSELOR AND ATTACHE REPORTS, OFFICIAL STATISTICS, USDA ESTIMATES.

FOREIGN AGRICULTURAL SERVICE
COTTON, OILSEEDS, TOBACCO
and SEEDS DIVISION

TABLE 20. SELECTED MONTHLY PRICES AND RATIOS

ITEM & UNIT	12-MO AV. END MAY			APRIL			MAY			MAY 02 % CH FM	
	2001	2002	%CH	2000	2001	%CH	2001	2002 1/	%CH	12MO AV	APR 02
SOYBEANS:											
NEARBY FUTURES (\$/MT)	173	170	-2%	158	171	8%	163	177	9%	5%	4%
NOVEMBER FUTURES (\$/MT)	177	172	-3%	159	170	7%	158	172	9%	0%	1%
U.S. FARM (\$/MT)	166	162	-3%	155	164	6%	159	170	7%	5%	3%
ILL. CRUSHER (\$/MT)	174	171	-2%	162	174	7%	168	181	8%	6%	4%
ILL. CENT. (\$/mt)	168	165	-1%	155	168	8%	162	175	8%	6%	4%
U.S. GULF (\$/MT)	185	181	-2%	169	181	7%	176	188	7%	4%	4%
ROTTERDAM (\$/MT)	200	196	-2%	180	192	7%	183	202	10%	3%	5%
BRAZIL 2/ (\$/MT)	179	176	-2%	158	171	8%	159	181	14%	3%	6%
ARGENTINA 3/ (\$/MT)	176	171	-3%	152	164	8%	156	175	12%	2%	7%
ROTT. LESS FARM (\$/MT)	34	34	0%	25	28	11%	24	32	35%	-5%	16%
SOY MEAL:											
DECATUR 48% (\$/MT)	188	183	-3%	175	178	2%	182	181	-1%	-1%	2%
ROTTERDAM (\$/MT)	188	177	-6%	161	166	3%	172	169	-2%	-4%	2%
ROTTERDAM (EUROS/MT)	209	199	-4%	180	187	4%	197	184	-6%	-8%	-2%
BRAZIL 2/ (\$/MT)	187	177	-5%	159	162	2%	171	164	-4%	-8%	1%
ARGENTINA 3/ (\$/MT)	168	157	-7%	153	148	-3%	154	153	-1%	-3%	3%
SOY OIL:											
DECATUR (\$/MT)	303	336	11%	298	338	13%	298	353	18%	5%	4%
ROTTERDAM (\$/MT)	318	380	20%	321	370	15%	295	397	35%	4%	7%
BRAZIL 2/ (\$/MT)	283	338	19%	280	340	22%	266	375	41%	11%	10%
ARGENTINA 3/ (\$/MT)	283	337	19%	268	340	27%	272	375	38%	11%	10%
PRICE											
US SOYBEANS AT FARM (%)	17%	16%		21%	17%		16%	17%		8%	-1%
US CORN AT FARM (%)	30%	15%		32%	12%		25%	12%		-21%	-1%
48% SOY MEAL/DECATUR (%)	24%	21%		23%	19%		23%	19%		-9%	0%
SOY OIL, DECATUR (%)	26%	28%		31%	24%		24%	19%		-31%	-19%
PALM OIL, FOB MAL. (%)	42%	50%		47%	44%		42%	39%		-22%	-11%
PALM OIL:											
MALAYSIA RBD FOB (\$/MT)	234	295	26%	223	317	42%	207	340	64%	15%	7%
MALAYSIA OLEIN FOB (\$/MT)	251	309	23%	240	331	38%	225	355	58%	15%	7%
U.S. (\$/MT)	338	386	14%	336	409	22%	324	434	34%	12%	6%
COCONUT OIL:											
U.S. (\$/MT)	386	377	-2%	323	429	33%	314	463	47%	23%	8%
ROTTERDAM (\$/MT)	338	356	5%	293	411	40%	295	420	42%	18%	2%
TRADE WEIGHTED OIL PRICE 5/ ROTT (\$/MT)	316	394	25%	322	396	23%	306	416	36%	6%	5%
PRICE DIFFERENCE FROM U.S. SOYBEAN OIL:											
SOYBEAN OIL: ARGENTINA (%)	-6%	0%		-10%	1%		-9%	6%			
PALM OIL: MALAYSIA RBD (%)	-23%	-12%		-25%	-6%		-31%	-4%			
MALAYSIA OLEIN (%)	-17%	-8%		-20%	-2%		-25%	1%			
U.S. (%)	12%	15%		13%	21%		9%	23%			
COCONUT OIL: U.S. (%)	27%	12%		8%	27%		5%	31%			
ROTTERDAM (%)	12%	6%		-2%	22%		-1%	19%			
CORN:											
U.S. FARM (\$/MT)	72	75	4%	74	75	1%	72	78	8%	4%	3%
COTTON:											
U.S. UPLAND (\$/MT)	1088	726	-33%	939	646	-31%	902	606	-33%	-17%	-6%
WHEAT:											
U.S. FARM (\$/MT)	99	103	4%	105	104	-1%	109	103	-6%	-1%	-1%
CRB NEARBY FUTURES PRICE INDEX	222.5	197.5	-11%	214.3	201.3	-6%	215.5	201.9	-6%	2%	0%
VALUE OF EURO: U.S./EURO	0.90	0.89	-1%	0.89	0.89	-1%	0.88	0.92	5%	3%	3%
SOYBEANS/CORN 6/:	2.50	2.32	-7%	2.23	2.34	5%	2.38	2.35	-1%	1%	0%
SOYBEANS/COTTON:	9.29	13.60	46%	9.91	15.26	54%	10.59	16.80	59%	24%	10%
SOYBEANS/WHEAT 6/:	1.69	1.57	-7%	1.48	1.57	7%	1.45	1.65	14%	5%	5%
48% SOY MEAL/CORN:	2.64	2.45	-7%	2.35	2.37	1%	2.54	2.33	-8%	-5%	-1%
SOY OIL/CORN:	4.26	4.49	5%	4.01	4.49	12%	4.16	4.55	9%	1%	1%
WHEAT/CORN 6/:	1.48	1.48	0%	1.51	1.49	-2%	1.64	1.42	-13%	-4%	-4%
SOY OIL/SOY MEAL:	1.62	1.84	14%	1.71	1.90	11%	1.64	1.95	19%		
FEED PROFITABILITY 7/:	1.53	1.46	-5%	1.61	1.29	-20%	1.63	1.30	-20%	-11%	1%
HOG/CORN PRICE RATIO:	24.06	21.42	-11%	25.29	16.65	-34%	27.69	17.51	-37%	-18%	5%
BROILER/FEED PRICE RATIO 8/:	7.55	7.70	2%	8.23	6.24	-24%	8.42	6.50	-23%	-16%	4%
CRUSH MARGIN:	26.61	30.88	16%	26.45	24.62	-7%	24.93	24.62	-1%	-20%	0%
SOY OIL SHARE SB. VAL :	28.49	30.99	9%	29.91	31.63	6%	28.92	32.25	12%	4%	2%
US SOYBEAN EXPORTS 9/:	2.36	2.35	0%	1.47	1.09	-26%	1.08	1.20	11%	-49%	10%
US SOYBEAN CRUSH 10/:	3.66	3.84	5%	3.57	3.79	6%	3.61	3.65	1%	-5%	-4%
TOTAL US SOBEAN DIS.	6.02	6.19	3%	5.04	4.88	-3%	4.69	4.86	4%	-22%	0%
US SOY OIL BEG STOCKS	1.00	1.29	29%	1.14	1.34	18%	1.14	1.29	14%	0%	-3%
MAL. PALM OIL BEG STKS	1.30	1.15	-11%	1.25	1.17	-6%	1.19	1.06	-11%	-9%	-10%
SUB-TOTAL OIL STOCKS	2.30	2.45	6%	2.39	2.51	5%	2.33	2.35	1%	-4%	-6%

1/ PRELIMINARY. 2/ FOB RIO GRANDE. 3/ FOB BUENOS AIRES. 4/ (12-MO HIGH LESS 12-MO LOW)/12-MO AV. 5/ INCLUDES SOY 35%; PALM 35%; RAPE & SUN 15% EACH. 6/ PER BUSHEL. 7/ INDEX OF PRICES RECEIVED BY FARMERS FOR LIVESTOCK & LIVESTOCK PRODUCTS DIVIDED BY THE INDEX OF PRICES PAID FOR FEED, 1910-14 BASE. 8/ USING 70/30 CORN/SOYBEAN MEAL RATION. 9/ MONTHLY CENSUS DATA PLUS EXPORT INSPECTIONS FOR MOST RECENT TWO MONTHS. 10. MONTHLY CENSUS DATA PLUS SEASONAL ADJUSTMENTS FOR MOST RECENT MONTH.

TABLE 21.
OILSEED PRICES
(US DOLLARS PER METRIC TON)

YEAR BEG. OCT.1	SOYBEANS					PEANUT		SUNFLOWERSEED		RAPESEED	COPRA	LINSEED
	U.S. 1/	U.S. 2/	BRAZIL 3/	ARG 4/	ROTT 5/	U.S. 6/	ROTT 7/	U.S. 8/	ROTT 9/	HAMB 10/	ROTT 11/	ROTT 12/
OCT-SEP AVG. 90/91-99/00	218	221	227	223	253	624	991	232	226	251	392	246
1990/91	209	210	214	207	241	798	1539	238	N/A	199	247	222
1991/92	205	208	211	207	237	600	831	192	N/A	205	397	201
1992/93	213	216	222	217	246	640	958	215	271	234	292	229
1993/94	233	234	235	231	259	668	1088	284	317	284	388	232
1994/95	205	208	217	214	248	609	856	236	309	289	432	261
1995/96	263	273	284	277	304	635	986	254	312	298	487	288
1996/97	274	278	285	288	307	603	926	258	266	284	452	298
1997/98	230	233	240	231	259	578	1055	256	309	296	398	302
1998/99	176	177	184	179	225	563	847	223	257	227	468	235
1999/00	173	175	183	180	208	544	820	168	214	190	357	193
2000/01												
OCT.	164	166	183	186	204	584	836	129	180	185	210	202
NOV.	167	171	186	189	205	575	913	134	194	189	237	207
DEC.	176	181	195	196	212	602	1030	142	208	200	228	211
JAN.	172	170	189	178	205	653	959	153	214	197	205	207
FEB.	164	163	176	164	200	N/A	913	163	207	191	193	200
MAR.	161	160	166	158	187	N/A	890	165	215	196	182	209
APR.	155	155	158	152	180	N/A	880	169	222	200	183	206
MAY	159	162	159	156	183	N/A	866	167	224	201	189	219
JUN.	164	168	169	165	191	N/A	875	193	227	197	196	223
JUL.	176	184	191	188	210	N/A	834	194	243	215	223	232
AUG.	177	180	193	186	216	531	830	209	246	224	235	244
SEP.	169	166	191	181	211	549	830	190	251	229	210	245
AVERAGE	167	169	180	175	200	582	888	167	219	202	208	217
2001/02												
OCT.	150	152	177	173	187	503	743	181	257	221	195	245
NOV	153	156	178	172	189	465	720	200	308	231	202	245
DEC.	154	157	173	168	189	434	680	217	314	224	212	244
JAN.	155	156	161	158	188	302	686	210	299	221	221	245
FEB.	155	157	160	162	187	236	690	220	304	212	232	242
MAR.	161	165	164	163	191	N/A	630	225	290	210	232	242
APR.	164	168	171	164	192	N/A	623	234	277	196	244	244
*MAY	170	175	181	175	202	N/A	615	234	293	199	263	248
JUN.												
JUL.												
AUG.												
SEP.												
AVERAGE	158	161	171	167	191	388	673	215	293	214	225	244

1/ U.S. FARM PRICE; USDA. 2/ U.S. NO.1 YELLOW CASH CENTRAL ILLINOIS; WALL STREET JOURNAL.

3/ RIO GRANDE, BRAZIL FOB; SAFRAS AND MERCADO. 4/ ARGENTINA FOB B.AIRES; SAFRAS AND MERCADO.

5/ ROTTERDAM CIF; VARIOUS SOURCES; OIL WORLD. 6/ U.S. FARM PRICE; IN-SHELL BASIS; USDA.

7/ ROTT CIF; US RUNNERS 40/50%, PUBLIC LEDGER PRIOR TO SEP 90; OIL WORLD FROM OCT 90 TO PRESENT.

8/ U.S. FARM PRICE; USDA. 9/ ROTTERDAM CIF; EC LOWER RHINE (BEGINNING SEP 93) U.S./CANADA PRIOR; OIL WORLD.

10/HAMBURG CIF; EUROPE "00" OIL; OIL WORLD. 11/ ROTTERDAM CIF; PHILIPPINES/INDONESIA; OIL WORLD

12/ ROTTERDAM CIF; CANADA NO.1; OIL WORLD.

DATE: JUNE 2002

FOREIGN AGRICULTURAL SERVICE
COTTON, OILSEEDS, TOBACCO
and SEEDS DIVISION

TABLE 22.
PROTEIN MEAL PRICES
(US DOLLARS PER METRIC TON)

YEAR BEG. OCT.1	SOYBEAN					COTTON- SEED U.S. 6/	SUNFLOWERSEED		PEANUT		FISH HAM 11/	RAPESEED HAM 12/	COPRA ROTT 13/	CORN GLUTEN 14/
	U.S. 1/	U.S. 2/	BRA 3/	ARG 4/	ROT 5/		U.S. 7/	ROT 8/	U.S. 9/	ROT 10/				
OCT-SEP AVG. 90/91-99/00	200	211	198	181	205	162	96	117	187	165	486	143	127	125
1990/91	187	200	178	171	198	145	97	113	206	154	468	131	133	146
1991/92	194	209	184	176	203	155	85	123	170	155	494	139	144	146
1992/93	201	214	185	183	207	178	98	134	191	165	390	157	131	135
1993/94	199	213	182	174	202	181	104	127	215	176	364	152	134	127
1994/95	167	179	172	151	184	123	69	103	142	161	448	134	125	128
1995/96	248	260	256	233	256	210	136	151	223	201	587	180	162	159
1996/97	286	289	289	257	278	212	122	138	256	235	579	175	134	127
1997/98	193	204	201	174	197	159	93	103	231	134	686	139	105	99
1998/99	145	153	150	130	150	121	72	76	110	104	442	105	108	96
1999/00	176	185	182	159	180	141	83	102	122	N/A	407	124	91	91
2000/01														
OCT.	180	189	193	170	194	165	91	111	130	N/A	414	136	84	91
NOV.	188	198	205	178	203	156	94	122	130	N/A	413	143	86	94
DEC.	207	216	219	194	223	177	98	139	130	N/A	463	168	94	105
JAN.	194	202	201	190	215	203	117	124	157	N/A	480	156	97	106
FEB.	174	183	189	172	183	164	121	113	132	N/A	464	135	94	91
MAR.	164	172	166	156	169	152	109	105	130	N/A	443	137	84	88
APR.	165	175	159	153	161	154	95	101	122	N/A	436	122	84	88
MAY	172	182	171	154	172	152	86	111	124	N/A	438	137	94	88
JUN.	179	190	180	159	182	140	88	117	N/A	N/A	457	144	96	91
JUL.	192	203	192	171	186	143	97	124	136	N/A	482	137	95	94
AUG.	188	197	181	159	183	144	105	125	144	N/A	508	134	99	102
SEP.	180	189	186	162	184	145	103	123	138	N/A	507	137	101	102
AVERAGE	182	191	187	168	188	158	100	118	134	N/A	459	141	92	95
2001/02														
OCT.	174	182	181	157	182	145	94	120	127	N/A	509	139	97	101
NOV	173	183	187	156	182	141	94	117	123	N/A	543	137	93	95
DEC.	162	170	175	147	173	148	94	114	110	N/A	573	137	93	94
JAN.	N/A	174	182	161	182	147	91	112	113	N/A	585	137	102	93
FEB.	N/A	169	174	156	169	138	90	103	110	N/A	590	137	108	89
MAR.	N/A	177	165	153	164	145	94	101	116	N/A	593	128	100	86
APR.	N/A	178	162	148	166	137	97	106	121	N/A	609	122	105	85
*MAY	N/A	181	164	153	169	133	99	106	116	N/A	625	128	107	86
JUN.														
JUL.														
AUG.														
SEP.														
AVERAGE	170	177	174	154	173	142	94	110	117	N/A	578	133	101	91

1/ DECATUR; AVERAGE WHOLESALE 44% PROTEIN; USDA. 2/ DECATUR, AVERAGE WHOLESALE 48% PROTEIN; USDA.
3/ RIO GRANDE, BRAZIL FOB; BULK RATE 45-46% PROTEIN; SAFRAS AND MERCADO. 4/ ARG. PELLETS, FOB B.AIRES;
SAFRAS AND MERCADO. 5/ ROTTERDAM CIF; ARG. 45/46%; OIL WORLD. 6/ MEMPHIS FOB; 41% PROTEIN SOLVENT
EXTRACTION; USDA. 7/ MINNEAPOLIS FOB; 32% PROTEIN; USDA. 8/ ROTTERDAM CIF; ARGENTINA-URUGUAY PELLETS
37-38%; OIL WORLD. 9/ SOUTHEAST MILLS FOB. 10/ ROTT CIF; INDIAN 48% PROTEIN; OIL WORLD. 11/HAMBURG CIF;
ANY ORIGIN 64-65% PROTEIN; OIL WORLD. 12/ HAMBURG FOB; EX-MILL 34% PROTEIN; OIL WORLD. 13/ ROTTERDAM CIF;
PHILIPPINES EXPELLER PELLETS 26% PROTEIN; OIL WORLD. 14/ ROTTERDAM CIF; PELLETS 23-24% PROTEIN; OIL WORLD.

DATE: JUNE 2002

FOREIGN AGRICULTURAL SERVICE
COTTON, OILSEEDS, TOBACCO
and SEEDS DIVISION

TABLE 23.
VEGETABLE OIL PRICES
(US DOLLARS PER METRIC TON)

YEAR BEGINNING. OCT.1	SOYBEANS				COTTONSEED		SUNFLOWERSEED		PEANUT		PALM	RAPESEED	COCONUT	CORN
	U.S. 1/	BRAZIL 2/	ARG 3/	ROTT 4/	U.S. 5/	ROTT 6/	U.S. 7/	ROTT 8/	U.S. 9/	ROTT 10/	MALAY 11/	ROTT 12/	ROTT 13/	U.S. 15/
OCT-SEP AVG. 90/91-99/00	495	482	483	515	583	629	532	561	865	866	461	507	599	549
1990/91	463	418	415	454	492	614	520	480	931	975	318	417	364	615
1991/92	421	394	398	437	503	545	477	459	602	641	365	416	605	569
1992/93	472	420	408	453	663	688	559	492	604	674	382	441	446	461
1993/94	595	539	543	580	668	749	685	627	952	973	445	578	564	582
1994/95	606	608	623	642	644	671	619	691	977	1005	651	637	656	584
1995/96	545	537	533	575	585	613	560	617	888	928	523	566	746	556
1996/97	496	514	515	536	564	588	499	545	963	959	526	539	693	530
1997/98	569	608	614	633	636	693	595	730	1080	964	601	637	625	638
1998/99	438	452	453	483	602	632	444	560	876	801	486	482	748	558
1999/00	344	328	332	356	474	496	365	413	780	744	309	359	539	393
2000/01														
OCT.	298	271	272	313	400	459	317	340	763	674	218	325	340	232
NOV.	295	284	282	316	393	460	314	379	783	684	226	326	367	229
DEC.	289	288	289	321	380	457	321	396	802	697	210	337	329	232
JAN.	276	273	281	306	358	441	318	386	821	688	200	338	319	226
FEB.	273	266	279	302	335	424	320	390	816	690	193	338	285	244
MAR.	306	298	287	329	342	446	347	430	791	693	223	363	289	263
APR.	298	280	268	321	309	395	334	436	750	699	223	379	293	303
MAY	298	266	272	295	320	383	336	431	728	695	207	375	295	327
JUN.	313	280	273	315	293	395	362	443	728	699	224	367	317	351
JUL.	364	349	348	409	370	429	408	495	728	668	287	425	358	381
AUG.	377	358	358	422	379	443	432	504	750	664	333	451	363	413
SEP.	340	331	330	382	348	401	393	503	750	665	274	442	322	381
AVERAGE	311	295	295	336	352	428	350	428	768	685	235	372	323	299
2001/02														
OCT.	317	310	308	376	318	396	384	522	799	666	235	434	307	379
NOV.	336	344	344	388	351	425	422	620	816	668	290	452	330	403
DEC.	333	358	357	403	354	403	532	651	816	668	302	460	339	495
JAN.	327	362	365	389	361	408	522	606	772	665	322	449	362	453
FEB.	312	323	323	358	350	408	518	578	617	665	302	418	376	405
MAR.	325	322	322	353	370	420	517	557	600	671	311	411	366	405
APR.	338	340	340	370	374	431	514	552	595	656	317	409	411	390
*MAY	353	375	375	397	491	443	516	574	623	647	340	410	420	377
JUN.														
JUL.														
AUG.														
SEP.														
AVERAGE	330	342	342	379	371	417	491	583	705	663	302	430	364	413

1/ DECATUR; AVERAGE WHOLESALE TANK CRUDE; USDA. 2/ RIO GRANDE, BRAZIL FOB; BULK RATE; SAFRAS AND MERCADO. 3/ C.I.A.R.A. FROM 1980 TO APRIL 1989; CRUDE FOB, BUENOS AIRES SAFRAS AND MERCADO FROM MAY 89. 4/ DUTCH FOB; EX-MILL; OIL WORLD. 5/ VALLEY POINTS FOB; TANK CARS CRUDE; USDA. 6/ ROTTERDAM CIF/FOB GULF SINCE 1994; US PBSY; OIL WORLD. 7/ MINNEAPOLIS FOB; USDA. 8/ EU FOB NW EURO PORTS; OIL WORLD. 9/ SOUTH EAST MILLS FOB; TANK CARS CRUDE; USDA. 10/ ROTTERDAM CIF; ANY ORIGIN; OIL WORLD. 11/ MALAYSIA FOB;RBD; PORLA. 12/ ROTTERDAM, DUTCH, FOB EX-MILL; OIL WORLD. 13/ ROTTERDAM CIF; PHILIPPINES/INDONESIA; OIL WORLD. 14/ ROTTERDAM; EX-TANK; OIL WORLD. 15/ DECATUR; CRUDE; AMS AND WALL STREET JOURNAL.

DATE: JUNE 2002

FOREIGN AGRICULTURAL SERVICE
COTTON, OILSEEDS, TOBACCO
and SEEDS DIVISION

Table 24: GSM-102 Program Announcements and Sales Registrations 1/
Fiscal Year 2002
(\$ Million)

Country (MAXIMUM CREDIT PERIOD)	Announced	Balance Available	Vegetable Oil	Protein Meal	Oilseeds
	FY 2002 Allocation	FY 2002 Allocation	Registered	Registered	Registered
Algeria (24 months)	150.0	98.8	0.0	1.8	0.0
Azerbaijan (12 months)	5.0	5.0	0.0	0.0	0.0
Baltic Region (12 months)	15.0	15.0	0.0	0.0	0.0
Bulgaria (36 months)	7.0	7.0	0.0	0.0	0.0
Caribbean Region (36 months)	220.0	9.4	5.0	66.8	11.7
Central American Region (36 months)	250.0	13.6	3.7	55.0	31.0
Central Europe Region (36 months)	10.0	10.0	0.0	0.0	0.0
China/ Hong Kong Region (36 months)	300.0	110.5	0.0	0.0	189.5
Dominican Republic (12 months)	25.0	25.0	0.0	0.0	0.0
East Africa (12 months)	5.0	5.0	0.0	0.0	0.0
Egypt (36 months)	100.0	100.0	0.0	0.0	0.0
India (36 months)	25.0	25.0	0.0	0.0	0.0
Jordan (36 months)	40.0	27.3	0.0	0.0	0.0
Kazakhstan (12 months)	10.0	7.9	0.0	0.0	0.0
Korea (24 months)	850.0	579.4	0.0	3.1	66.4
Lebanon (36 months)	10.0	7.9	0.0	0.0	0.0
Malaysia (36 months)	30.0	30.0	0.0	0.0	0.0
Mexico (24 months)	500.0	311.9	13.3	3.6	17.3
Morocco (36 months)	10.0	10.0	0.0	0.0	0.0
Nigeria (90 days)	10.0	5.8	0.0	0.0	0.0
Philippines (36 months)	100.0	89.8	0.0	0.0	0.0
Poland (36 months)	25.0	25.0	0.0	0.0	0.0
Romania (12 months)	25.0	25.0	0.0	0.0	0.0
Russia (12 months)	20.0	20.0	0.0	0.0	0.0
South American Region (36 months)	600.0	280.5	7.6	37.0	32.3
Southeast Asia Region (36 months)	190.0	18.9	0.0	51.2	72.9
Southeast Europe Region (24 months)	25.0	25.0	0.0	0.0	0.0
Southern Africa Region (36 months)	50.0	50.0	0.0	0.0	0.0
Sri Lanka	35.0	35.0	0.0	0.0	0.0
Thailand (36 months)	100.0	100.0	0.0	0.0	0.0
Tunisia (36 months)	30.0	30.0	0.0	0.0	10.0
Turkey (36 months)	345.0	25.9	61.1	38.6	64.5
West Africa (12 months)	14.0	12.8	0.0	0.0	0.0
TOTAL FY 2002	4,131.0	2,142.4	90.7	257.1	495.6
TOTAL FY 2001			62.4	375.1	686.1
TOTAL FY 2000			94.6	207.1	744.1
TOTAL FY 1999			148.5	137.1	665.3
TOTAL FY 1998			144.0	186.0	625.7
TOTAL FY 1997			126.6	110.4	497.7

1/As of May 31, 2002

Table 25: P.L. 480 Title I Obligations
 Agreements Signed and Sales Registered
 Fiscal Year 2002

Country	AGREEMENTS UNDER CONSIDERATION		SALES REGISTERED	
	Quantity 1/ (1,000 MT)	Value (\$ Million)	Quantity 1/ (1,000 MT)	Value (\$ Million)
Vegetable Oil:				
El Salvador	13.0	5.0	--	--
Total Vegetable Oil	13.4	5.0		
Oilseeds and Meal:				
Philippines	51.5	10.0	--	--
Pakistan	56.8	10.0	--	--
Total Oilseeds and Meal	110.3	20.0		
TOTAL P.L. 480 Title I	123.7	25.0		

As of April 5, 2002

1/ Agreement quantities are approximate. Actual sales registered are controlled by dollar value.

U.S. TRADE

TABLE 1. U.S. FISCAL YEAR EXPORTS OF OILSEEDS, MEALS, AND OILS

COMMODITY	OCT-MAR	OCT-MAR	APR-SEP	APR-SEP	FY-00	FY-01	FY-02	--ANNUAL PERCENT CHANGES IN--				
	2000/01	2001/02	2001	2002 1/				FY-01	OCT-MAR 2001/02	APR-SEP 2002	FY-02	
SOYBEANS:												
1,000 M.T.	20,094	21,869	6,565	6,299	26,045	26,659	28,168	2%	9%	-4%	6%	
\$/ M.T.	\$191	\$183	\$194	\$184	\$195	\$192	\$183	-2%	-4%	-5%	-4%	
MIL. DOL.	\$3,834	\$3,998	\$1,272	\$1,158	\$5,072	\$5,106	\$5,155	1%	4%	-9%	1%	
SOYBEAN MEAL:												
1,000 M.T.	3,918	4,154	3,033	2,876	6,652	6,951	7,031	4%	6%	-5%	1%	
\$/ M.T.	\$205	\$190	\$189	\$183	\$184	\$198	\$187	8%	-8%	-3%	-6%	
MIL. DOL.	\$804	\$789	\$574	\$526	\$1,226	\$1,378	\$1,314	12%	-2%	-8%	-5%	
SOYBEAN OIL:												
1,000 M.T.	402	666	236	332	624	638	998	2%	66%	40%	56%	
\$/ M.T.	\$357	\$385	\$410	\$407	\$446	\$376	\$392	-16%	8%	-1%	4%	
MIL. DOL.	\$143	\$257	\$97	\$135	\$278	\$240	\$392	-14%	79%	39%	63%	
SUNFLOWERSEED:												
1,000 M.T.	100	129	100	95	206	200	224	-3%	29%	-5%	12%	
\$/ M.T.	\$457	\$433	\$464	\$599	\$437	\$460	\$503	5%	-5%	29%	9%	
MIL. DOL.	\$46	\$56	\$46	\$57	\$90	\$92	\$113	2%	23%	23%	23%	
SUNFLOWER OIL:												
1,000 M.T.	125	126	128	121	286	252	247	-12%	1%	-5%	-2%	
\$/ M.T.	\$459	\$539	\$454	\$637	\$531	\$457	\$587	-14%	17%	40%	29%	
MIL. DOL.	\$57	\$68	\$58	\$77	\$152	\$115	\$145	-24%	19%	33%	26%	
CORN OIL:												
1,000 M.T.	196	240	232	247	440	429	488	-3%	22%	7%	14%	
\$/ M.T.	\$499	\$528	\$469	\$522	\$594	\$483	\$525	-19%	6%	11%	9%	
MIL. DOL.	\$98	\$127	\$109	\$129	\$262	\$207	\$256	-21%	29%	19%	24%	
CORN GLUTEN FEED & MEAL:												
1,000 M.T.	2,741	2,721	2,773	2,779	5,809	5,514	5,500	-5%	-1%	0%	0%	
\$/ M.T.	\$107	\$111	\$110	\$100	\$102	\$109	\$106	6%	3%	-9%	-3%	
MIL. DOL.	\$295	\$302	\$305	\$278	\$594	\$600	\$581	1%	3%	-9%	-3%	
PEANUTS: 3/												
1,000 M.T.	87	125	58	55	264	144	180	-45%	45%	-4%	25%	
\$/ M.T.	\$933	\$850	\$938	\$914	\$898	\$935	\$869	4%	-9%	-3%	-7%	
MIL. DOL.	\$81	\$107	\$54	\$50	\$237	\$135	\$157	-43%	32%	-7%	16%	
OTHER PRODUCTS:												
1,000 M.T.	1,065	1,244	837	795	1,700	1,901	2,039	12%	17%	-5%	7%	
\$/ M.T.	\$756	\$852	\$853	\$912	\$727	\$799	\$876	10%	13%	7%	10%	
MIL. DOL.	\$804	\$1,060	\$714	\$725	\$1,236	\$1,518	\$1,785	23%	32%	2%	18%	
TOTAL: 4/												
1,000 M.T.	28,727	31,275	13,963	13,600	42,026	42,689	44,875	2%	9%	-3%	5%	
\$/ M.T.	\$214	\$216	\$231	\$231	\$218	\$220	\$221	1%	1%	0%	0%	
MIL. DOL.	\$6,162	\$6,762	\$3,229	\$3,135	\$9,146	\$9,391	\$9,898	3%	10%	-3%	5%	

1/ Derived estimates. 2/ Forecast. 3/ Shelled Basis. 4/ Data may not add due to rounding.

SOURCE: U.S. BUREAU OF CENSUS DATA AND USDA ESTIMATES.

12-JUN-2002

Alan Holz Ph (202) 720-0143; FAX (202) 720-0965

TABLE 2 -- U.S. EXPORTS: OILSEEDS AND PRODUCTS

	MARCH 2001	MARCH 2002	OCTOBER- MARCH 2000/01	OCTOBER- MARCH 2001/02
	METRIC TONS			
OILSEEDS:				
SOYBEANS	3,660,492	1,735,622	20,094,232	21,868,948
COTTONSEED	17,179	17,703	89,515	140,294
FLAXSEED	612	314	17,778	38,656
PEANUTS 1/	11,852	21,984	86,524	125,377
SAFFLOWERSEED	7,482	12	23,296	10,005
SUNFLOWERSEED 2/	16,044	19,371	99,644	128,908
OTHER	14,954	14,234	146,673	128,155
TOTAL	3,728,615	1,809,240	20,557,662	22,440,343
OILCAKES & MEALS:				
SOYBEAN 3/	844,863	765,284	3,917,709	4,154,462
COTTONSEED	13,529	14,034	62,419	75,077
LINSEED	1,320	2,379	15,616	38,819
OTHER	14,869	37,317	79,711	130,896
TOTAL	874,581	819,014	4,075,455	4,399,254
CORN GLUTEN FEED	393,716	458,879	2,358,518	2,351,223
CORN GLUTEN MEAL	69,610	81,442	382,748	369,913
VEGETABLE OILS:				
SOYBEAN	64,605	105,764	401,532	666,243
CORN	33,160	42,892	196,492	240,269
COTTONSEED	3,283	5,497	28,292	39,898
LINSEED	1,045	1,080	27,880	29,804
PEANUT	147	235	1,978	1,811
SUNFLOWERSEED	9,040	12,366	124,658	125,903
OTHER	30,373	29,933	188,099	237,173
TOTAL	141,653	197,767	968,931	1,341,101
CONCENTRATES & HYDROLYSATES	6,801	4,419	32,476	30,387
FLOUR & GRITS	52,090	50,068	261,678	264,821
ISOLATES	6,050	6,590	40,823	38,827
OTHER OILSEED PRODUCTS	13,232	13,529	75,479	74,583
TOTAL	78,173	74,606	410,456	408,618
LARD	2,486	3,773	20,356	24,425
TALLOW & GREASES	76,563	84,671	418,116	521,564
FISH OIL	5,946	1,580	62,533	52,349
FISHMEAL	9,678	13,051	53,142	55,596

SOURCE: MAY 2002 U.S. BUREAU OF THE CENSUS DATA.

1/ INCLUDES UNSHELLED PEANUTS CONVERTED TO SHELLED BASIS AT A RATE OF 75%.

2/ ON AN INSHELL BASIS, ACTUAL WEIGHT. 3/ INCLUDES HULL MEAL.

TABLE 3 -- U.S. EXPORTS: OILSEEDS AND PRODUCTS

	MARCH 2001	MARCH 2002	OCTOBER- MARCH 2000/01	OCTOBER- MARCH 2001/02
THOUSAND DOLLARS				
OILSEEDS:				
SOYBEANS	701,190	334,024	3,833,708	3,997,652
COTTONSEED	3,189	3,125	16,420	25,023
FLAXSEED	82	47	2,623	8,317
PEANUTS	11,131	18,488	80,738	106,508
SAFFLOWERSEED	1,968	9	5,164	2,773
SUNFLOWERSEED	7,568	8,527	45,529	55,802
OTHER	4,264	3,958	33,713	31,980
TOTAL	729,391	368,178	4,017,893	4,228,055
OILCAKES & MEALS:				
SOYBEAN 1/	164,238	143,134	804,101	788,700
COTTONSEED	2,043	2,162	9,521	12,438
LINSEED	294	438	2,870	6,583
OTHER	8,289	11,570	37,650	48,098
TOTAL	174,864	157,303	854,143	855,820
CORN GLUTEN FEED	29,508	36,109	179,273	188,428
CORN GLUTEN MEAL	21,384	23,389	115,285	114,064
VEGETABLE OILS				
SOYBEAN	22,399	40,200	143,268	256,580
CORN	15,788	23,041	98,090	126,886
COTTONSEED	1,713	2,646	14,408	17,559
LINSEED	619	549	12,072	13,539
PEANUT	149	201	1,755	1,620
SUNFLOWERSEED	4,298	6,929	57,263	67,901
OTHER	23,329	24,499	143,334	173,430
TOTAL	68,296	98,064	470,190	657,515
CONCENTRATES & HYDROLYSATES	14,405	13,461	73,179	83,721
FLOUR & GRITS	12,745	11,880	69,608	61,484
ISOLATES	44,564	60,402	283,713	484,474
OTHER OILSEED PRODUCTS	16,049	17,102	92,634	94,431
TOTAL	87,762	102,845	519,134	724,110
LARD	1,143	1,691	9,141	11,486
TALLOW & GREASES	21,332	27,681	115,471	170,820
INED. ANIMAL TALLOW & GREASES	25,671	32,466	149,404	204,022
FISH OIL	1,734	852	17,771	24,738
FISHMEAL	7,097	8,789	31,208	37,056

SOURCE: MAY 2002 U.S. BUREAU OF THE CENSUS DATA.

1/ INCLUDES HULL MEAL.

TABLE 4 -- U.S. EXPORTS: SOYBEANS

	MARCH 2001	MARCH 2002	SEPTEMBER- MARCH 2000/01	SEPTEMBER- MARCH 2001/02
	METRIC TONS			
CANADA	29,497	52,741	225,573	560,355
EUROPE	470,138	248,038	5,916,445	6,927,554
EUROPEAN UNION	470,100	247,849	5,904,232	6,768,761
BELGIUM-LUXEMBOURG	59,731	20	437,776	456,105
DENMARK	0	0	0	41,999
FRANCE	0	29,900	175,856	398,659
GERMANY	140	0	531,080	478,610
GREECE	31,828	18,900	125,632	124,622
ITALY	52,463	37,005	215,107	632,797
NETHERLANDS	165,124	132,652	2,627,370	2,390,420
PORTUGAL	0	0	268,840	415,807
SPAIN	112,027	29,312	1,114,235	1,519,468
UNITED KINGDOM	44,785	0	347,207	242,417
NON EU WESTERN EUROPE	19	0	194	56,773
EASTERN EUROPE	19	189	12,019	102,020
ASIA (LESS MIDDLE EAST)	2,491,322	920,553	11,070,600	10,279,751
INDONESIA	121,529	9,180	686,927	610,252
JAPAN	398,062	381,438	2,404,995	2,445,729
KOREA, REP. OF	58,845	77,356	730,011	754,627
TAIWAN	155,459	314,404	1,080,189	1,380,419
CHINA	1,626,588	0	5,159,651	3,927,453
LATIN AMERICA	466,401	409,261	2,546,982	2,869,393
MEXICO	409,040	347,151	2,285,771	2,436,590
BRAZIL	0	0	0	281
COSTA RICA	14,699	10,185	133,170	114,214
COLOMBIA	10,764	25,064	33,902	171,047
VENEZUELA	21,998	0	28,857	51,975
AFRICA & MIDDLE EAST	203,134	105,029	764,579	1,159,628
ISRAEL	72,737	43,561	306,218	410,507
OCEANIA	0	0	358	41
FORMER SOVIET UNION	0	0	19	75,006
CANADIAN TRANSSHIPMENTS	0	0	967,413	848,262
TOTAL WORLD	3,660,492	1,735,622	21,491,969	22,719,990

SOURCE: MAY 2002 U.S. BUREAU OF THE CENSUS DATA.

TABLE 5 -- U.S. EXPORTS: SOYBEAN MEAL 1/

	MARCH 2001	MARCH 2002	OCTOBER- MARCH 2000/01	OCTOBER- MARCH 2001/02
	METRIC TONS			
CANADA	68,997	86,784	452,160	560,880
LATIN AMERICA	113,394	177,873	704,358	951,607
MEXICO	11,912	42,670	113,350	172,655
DOMINICAN REPUBLIC	16,133	33,646	174,651	208,726
EL SALVADOR	17,260	22,900	77,935	64,137
GUATEMALA	4,477	29,215	89,580	119,607
PANAMA	9,766	9,693	43,339	44,632
VENEZUELA	169	0	24,514	32,950
ASIA (LESS MIDDLE EAST)	340,460	291,323	1,300,052	1,258,755
CHINA	27,500	0	27,521	300
INDONESIA	99,638	103,095	339,425	275,202
JAPAN	1,379	7,809	102,027	137,352
MALAYSIA	10,071	0	52,376	0
PHILIPPINES	95,539	132,520	484,540	547,185
THAILAND	90,921	46,202	172,331	246,519
EUROPE	174,033	60,625	522,151	321,387
EUROPEAN UNION	174,033	56,475	513,933	309,927
DENMARK	0	4,769	24,291	27,932
GERMANY	0	0	86	1,616
IRELAND	66,278	37,483	99,745	107,395
ITALY	12,711	0	126,287	40,344
NETHERLANDS	67,262	4,652	114,412	71,106
SPAIN	23,742	7,140	106,363	22,608
UNITED KINGDOM	425	141	1,249	1,065
EASTERN EUROPE	0	4,150	5,051	9,646
AFRICA & MIDDLE EAST	147,877	142,625	811,887	787,341
ALGERIA	36,041	37,387	129,024	148,070
EGYPT	49,035	24,567	249,964	127,232
SAUDI ARABIA	30,908	20,900	198,457	154,312
SOUTH AFRICA	0	0	0	63
OCEANIA	102	5,994	94,027	177,295
AUSTRALIA	102	2,496	68,280	137,493
FORMER SOVIET UNION	0	59	33,073	95,373
BALTIC STATES	0	0	0	14,863
FSU 12	0	59	33,073	80,510
TOTAL WORLD	844,863	765,284	3,917,709	4,154,462

SOURCE: MAY 2002 U.S. BUREAU OF THE CENSUS DATA.
1/ INCLUDES HULL MEAL.

TABLE 6 -- U.S. EXPORTS: SOYBEAN OIL

	MARCH 2001	MARCH 2002	OCTOBER- MARCH 2000/01	OCTOBER- MARCH 2001/02
	METRIC TONS			
CANADA	8,491	4,994	25,475	35,780
AFRICA & MIDDLE EAST	30,727	3,366	105,215	191,424
ANGOLA	0	26	881	26
ETHIOPIA	0	0	3,306	1,965
MOROCCO	0	0	0	26,517
SIERRA LEONE	0	0	795	448
TURKEY	0	0	0	85,199
UNITED ARAB EMIRATES	0	0	5,515	3,499
LATIN AMERICA	22,141	37,085	148,547	213,735
MEXICO	11,572	19,404	44,507	95,258
COLOMBIA	550	3,550	16,650	8,353
DOMINICAN REPUBLIC	99	2,054	948	30,034
ECUADOR	0	0	9,849	0
HAITI	61	81	1,283	2,954
JAMAICA	185	2,040	8,409	11,097
PERU	20	0	27,438	15,683
ASIA (LESS MIDDLE EAST)	1,798	59,727	111,116	198,890
BANGLADESH	0	20,000	0	88,440
CHINA	0	0	5,500	0
HONG KONG	78	8,848	11,009	11,696
INDIA	1,717	710	47,315	8,468
KOREA, REPUBLIC OF	0	9,809	47,035	44,457
EUROPE	1,449	579	7,089	24,583
FORMER SOVIET UNION	0	10	4,084	1,737
ARMENIA	0	0	0	0
GEORGIA	0	0	0	0
KYRGYZSTAN	0	0	0	0
MOLDOVA	0	0	200	835
UKRAINE	0	0	0	0
RUSSIA	0	10	2,760	202
OCEANIA	0	2	6	94
TOTAL WORLD	64,605	105,764	401,532	666,243

SOURCE: MAY 2002 U.S. BUREAU OF THE CENSUS DATA.

TABLE 7 -- U.S. EXPORTS: SUNFLOWERSEED 1/

	MARCH 2001	MARCH 2002	SEPTEMBER- MARCH 2000/01	SEPTEMBER- MARCH 2001/02
METRIC TONS				
CANADA	840	2,360	9,229	17,169
EUROPE	12,068	13,832	71,781	102,810
EUROPEAN UNION	11,421	13,133	69,209	99,505
BELGIUM-LUXEMBOURG	200	262	2,435	1,560
DENMARK	457	364	3,405	2,526
GERMANY	5,597	6,828	32,254	41,456
NETHERLANDS	1,631	1,696	10,075	26,575
SPAIN	2,518	2,661	14,030	16,395
SWEDEN	247	181	1,199	1,766
UNITED KINGDOM	476	719	3,419	6,268
NON EU WESTERN EUROPE	226	185	1,150	1,546
NORWAY	189	148	930	1,398
EASTERN EUROPE	421	513	1,422	1,759
LATIN AMERICA	404	600	11,194	3,833
MEXICO	384	600	10,611	3,592
ASIA (LESS MIDDLE EAST)	742	833	9,198	6,308
JAPAN	381	306	1,741	1,766
TAIWAN	36	154	662	785
AFRICA & MIDDLE EAST	1,873	1,416	11,520	9,664
KUWAIT	21	0	229	21
SAUDI ARABIA	84	0	664	301
TURKEY	550	594	4,055	4,059
UNITED ARAB EMIRATES	0	21	790	26
OCEANIA	43	183	625	904
TOTAL WORLD	16,044	19,371	114,135	141,641

SOURCE: MAY 2002 U.S. BUREAU OF THE CENSUS DATA.
1/ ON AN INSHELL BASIS, ACTUAL WEIGHT.

TABLE 8 -- U.S. EXPORTS: SUNFLOWERSEED OIL

	MARCH 2001	MARCH 2002	OCTOBER- MARCH 2000/01	OCTOBER- MARCH 2001/02
	METRIC TONS			
CANADA	2,020	2,028	10,965	13,175
LATIN AMERICA	993	993	32,889	13,789
MEXICO	698	591	30,448	11,814
COLOMBIA	0	0	1,057	187
EL SALVADOR	295	0	295	4
GUATEMALA	0	0	668	0
PERU	0	0	0	0
AFRICA & MIDDLE EAST	1,041	8,928	45,206	53,658
ALGERIA	0	0	32,600	18,767
EGYPT	15	5,500	3,284	7,499
KUWAIT	0	2	557	14
TURKEY	0	0	0	13,997
UNITED ARAB EMIRATES	0	1,500	4,516	2,700
EUROPE	4,895	414	25,515	33,146
EUROPEAN UNION	4,895	0	23,721	22,946
NETHERLANDS	3,060	0	21,859	21,395
NON EU WESTERN EUROPE	0	0	0	0
EASTERN EUROPE	0	414	1,794	10,200
CROATIA	0	0	0	3,000
ASIA (LESS MIDDLE EAST)	91	3	9,220	12,131
JAPAN	38	0	1,614	1,389
INDIA	0	0	0	0
PAKISTAN	0	0	0	0
SINGAPORE	0	2	1,054	4
TAIWAN	0	1	6,359	8,623
OCEANIA	0	0	14	4
TOTAL WORLD	9,040	12,366	124,658	125,903

SOURCE: MAY 2002 U.S. BUREAU OF THE CENSUS DATA.

TABLE 9 -- U.S. EXPORTS: PEANUTS AND PRODUCTS

	MARCH 2001	MARCH 2002	AUGUST- MARCH 2000/01	AUGUST- MARCH 2001/02
METRIC TONS				
EDIBLES				
FRANCE	0	309	690	631
GERMANY	0	296	1,592	4,129
ITALY	0	530	283	1,901
NETHERLANDS	2,199	4,786	21,038	24,441
SPAIN	140	213	1,125	1,334
UNITED KINGDOM	1,147	2,824	7,766	12,327
NORWAY	39	41	199	164
CANADA	3,443	4,769	41,546	35,465
JAPAN	479	520	3,419	3,929
TOTAL	9,438	17,119	102,330	106,623
PREPARED/PRESERVED				
TOTAL	1,660	3,202	14,146	20,648
INSHELL 1/				
TOTAL	881	1,483	16,043	12,291
OILSTOCK				
TOTAL	92	551	2,341	2,521
TOTAL PEANUTS 2/	11,851	21,984	130,849	139,010
PEANUT BUTTER				
TOTAL	1,649	1,211	9,838	8,862

SOURCE: MAY 2002 U.S. BUREAU OF THE CENSUS DATA.

1/ ON AN UNSHELLED BASIS, ACTUAL WEIGHT. 2/ INCLUDES UNSHELLED CONVERTED TO SHELLED BASIS AT RATE OF 75 PERCENT.

TABLE 10 -- U.S. EXPORTS: COTTONSEED OIL

	MARCH 2001	MARCH 2002	OCTOBER- MARCH 2000/01	OCTOBER- MARCH 2001/02
	METRIC TONS			
CANADA	2,780	3,120	18,346	13,417
LATIN AMERICA	419	1,279	6,372	14,261
MEXICO	362	246	6,131	5,788
BARBADOS	0	0	94	42
BRAZIL	0	0	0	0
CHILE	0	0	0	0
COLOMBIA	0	0	0	0
EL SALVADOR	0	1,000	0	2,300
GUATEMELA	0	0	20	0
HONDURAS	0	0	0	0
NICARAGUA	0	0	0	5,950
TRINIDAD & TOBAGO	15	30	51	177
ASIA (LESS MIDDLE EAST)	34	824	3,300	7,347
JAPAN	0	790	2,952	3,742
KOREA, REP. OF	0	0	0	2,544
EUROPE	50	11	108	1,115
EUROPEAN UNION	50	11	108	1,115
GREECE	0	0	0	0
NETHERLANDS	0	0	0	1,000
GERMANY	1	11	25	30
NON EU WESTERN EUROPE	0	0	0	0
AFRICA & MIDDLE EAST	0	263	153	3,758
CONGO	0	0	0	0
ISRAEL	0	0	140	485
LIBERIA	0	0	0	0
SOUTH AFRICA	0	0	0	0
FORMER SOVIET UNION	0	0	0	0
OCEANIA	0	0	13	0
TOTAL WORLD	3,283	5,497	28,292	39,898

SOURCE: MAY 2002 U.S. BUREAU OF THE CENSUS DATA.

TABLE 11 -- U.S. EXPORTS: CORN OIL

	MARCH 2001	MARCH 2002	OCTOBER- MARCH 2000/01	OCTOBER- MARCH 2001/02
	METRIC TONS			
CANADA	1,713	2,263	14,719	13,597
EUROPE	2,942	9,635	12,455	20,121
EUROPEAN UNION	2,937	9,635	12,395	20,090
FRANCE	0	0	10	0
GERMANY	33	0	105	52
GREECE	0	1,020	138	2,040
ITALY	1,504	8,599	9,486	16,147
NETHERLANDS	0	16	0	1,816
SPAIN	1,401	0	2,657	0
NON EU WESTERN EUROPE	5	0	60	19
EASTERN EUROPE	0	0	0	12
LATIN AMERICA	7,029	6,432	46,720	32,575
MEXICO	4,044	5,686	24,679	23,873
ARGENTINA	0	0	0	0
COLOMBIA	0	0	0	0
DOMINICAN REPUBLIC	116	107	1,290	515
ECUADOR	0	0	143	0
GUATEMALA	17	13	147	798
HATI	0	0	10,041	43
JAMAICA & DEP.	41	31	168	216
NETH. ANTILLES	187	68	566	252
PANAMA	18	15	493	355
VENEZUELA	7	0	4,848	5,018
ASIA (LESS MIDDLE EAST)	1,983	3,399	21,436	12,358
HONG KONG	0	2	5,364	10
JAPAN	3	497	2,498	1,615
KOREA, REPUBLIC OF	1,969	1,889	5,261	6,610
MALAYSIA	0	0	3,214	1,500
SINGAPORE	0	1,000	4,242	2,490
TAIWAN	0	0	735	0
AFRICA & MIDDLE EAST	19,494	19,962	101,162	160,106
EGYPT	2,844	2,000	14,262	10,426
ETHIOPIA	0	0	0	0
ISRAEL	19	1,123	3,279	3,403
JORDAN	351	0	3,382	3,523
LEBANON	188	738	1,966	1,553
SAUDI ARABIA	6,064	0	21,789	22,234
TURKEY	4,801	6,602	39,914	84,785
UNITED ARAB EMIRATES	2,728	5,500	7,062	17,379
FORMER SOVIET UNION	0	1,200	0	1,200
OCEANIA	0	0	0	311
TOTAL WORLD	33,160	42,892	196,492	240,269

SOURCE: MAY 2002 U.S. BUREAU OF THE CENSUS DATA.

TABLE 12 -- U.S. EXPORTS: CORN GLUTEN FEED

	MARCH 2001	MARCH 2002	OCTOBER- MARCH 2000/01	OCTOBER- MARCH 2001/02
	METRIC TONS			
CANADA	247	805	718	4,567
EUROPE	368,388	438,964	2,191,517	2,225,651
EUROPEAN UNION	368,388	438,964	2,191,517	2,225,651
FRANCE	0	7,864	39,333	22,873
GERMANY	29,912	62,945	232,745	284,305
IRELAND	46,493	54,391	359,983	279,792
ITALY	13,438	0	25,111	10,500
NETHERLANDS	39,984	185,646	578,615	647,463
PORTUGAL	64,816	40,329	280,194	263,074
SPAIN	85,210	40,573	340,990	326,102
UNITED KINGDOM	88,535	47,216	298,758	378,647
NON EU WESTERN EUROPE	0	0	0	0
LATIN AMERICA	17,835	18,910	53,448	51,289
MEXICO	751	6,273	2,409	15,388
ASIA (LESS MIDDLE EAST)	0	0	7,084	183
HONG KONG	0	0	0	0
AFRICA & MIDDLE EAST	7,150	0	105,655	68,070
OCEANIA	96	200	96	1,463
TOTAL WORLD	393,716	458,879	2,358,518	2,351,223

SOURCE: MAY 2002 U.S. BUREAU OF THE CENSUS DATA.

TABLE 13 -- U.S. EXPORTS: CORN GLUTEN MEAL

	MARCH 2001	MARCH 2002	OCTOBER- MARCH 2000/01	OCTOBER- MARCH 2001/02
METRIC TONS				
CANADA	15,140	5,913	67,644	32,002
EUROPE	6,646	20,118	45,475	63,551
EUROPEAN UNION	6,646	20,118	45,475	63,551
NON EU WESTERN EUROPE	0	0	0	0
EASTERN EUROPE	0	0	0	0
LATIN AMERICA	13,911	11,253	71,307	88,334
MEXICO	6,581	7,555	47,915	52,648
ASIA (LESS MIDDLE EAST)	30,754	37,186	149,890	135,695
HONG KONG	0	0	0	0
JAPAN	11,375	6,444	41,357	30,144
MALAYSIA	9,342	7,129	32,319	38,353
SINGAPORE	40	121	163	263
TAIWAN	2,422	4,461	24,973	20,771
THAILAND	6,183	6,172	35,915	16,327
INDONESIA	224	11,081	10,791	24,964
KOREA, REPUBLIC OF	0	0	0	0
AFRICA & MIDDLE EAST	0	6,930	45,217	42,543
ISRAEL	0	0	7,359	7,919
OCEANIA	3,159	42	3,215	4,586
TOTAL WORLD	69,610	81,442	382,748	369,913

SOURCE: MAY 2002 U.S. BUREAU OF THE CENSUS DATA.

TABLE 14 -- U.S. IMPORTS: SELECTED OILSEEDS AND PRODUCTS

	MARCH 2001	MARCH 2002	OCTOBER- MARCH 2000/01	OCTOBER- MARCH 2001/02
METRIC TONS				
OILSEEDS				
FLAXSEED	6,240	3,766	17,439	14,285
PEANUTS /1	15,899	746	22,085	5,417
RAPESEED	40,462	2,494	81,270	25,070
SOYBEANS	10,321	7,120	53,436	45,821
SUNFLOWERSEED	5,084	6,612	35,588	47,176
OTHER	4,139	26,465	42,969	47,232
TOTAL	82,145	47,203	252,787	185,001
PROTEIN MEALS	106,433	57,287	685,081	465,093
CORN GLUTEN FEED	1,862	1,083	11,958	12,178
CORN GLUTEN MEAL	620	1,613	6,868	7,823
EDIBLE OILS				
PALM	6,644	16,892	85,709	111,301
COCONUT	10,128	47,551	270,340	253,736
PALM KERNEL /2	1,099	3,870	83,868	60,281
OLIVE	16,245	19,802	100,634	102,081
RAPESEED	45,513	37,313	269,499	249,438
SOYBEAN	4,113	1,679	17,496	10,383
OTHER	5,551	5,409	40,666	41,360
TOTAL	89,293	132,516	868,212	828,580
INEDIBLE OILS				
CASTOR	74	4,936	18,043	16,412
TUNG	98	46	9,472	3,736
LINSEED	688	455	2,854	1,994
TOTAL	860	5,437	30,369	22,142
PEANUT BUTTER	1,934	1,784	12,055	9,038
OTHER OILSEEDS & PRODUCTS	12,621	14,041	110,877	119,483
TOTAL OILSEEDS & PRODUCTS	295,768	260,964	1,978,207	1,649,338
FISH OIL	682	800	4,492	5,765
FISHMEAL	5,379	7,120	20,714	34,597

SOURCE: MAY 2002 U.S. BUREAU OF THE CENSUS DATA.

1/ INCLUDES UNSHELLED CONVERTED TO SHELLED BASIS AT A RATE OF 75 PERCENT.

2/ INCLUDES SMALL AMOUNTS OF BABASSU OIL.

TABLE 15 -- U.S. IMPORTS: SELECTED OILSEEDS AND PRODUCTS

	MARCH 2001	MARCH 2002	OCTOBER- MARCH 2000/01	OCTOBER- MARCH 2001/02
THOUSAND DOLLARS				
OILSEEDS				
FLAXSEED	1,558	1,114	5,080	4,889
PEANUTS	11,943	565	17,795	5,372
RAPESEED	6,864	524	13,463	5,022
SOYBEANS	2,951	1,599	13,555	9,908
SUNFLOWERSEED	1,175	1,660	8,948	12,180
OTHER	2,249	4,764	15,447	15,071
TOTAL	26,740	10,225	74,289	52,441
PROTEIN MEALS	12,415	7,296	81,011	58,793
CORN GLUTEN FEED	176	99	1,023	1,181
CORN GLUTEN MEAL	189	338	1,776	2,058
EDIBLE OILS				
PALM	1,762	4,930	26,568	29,152
COCONUT	3,308	11,020	106,169	76,101
PALM KERNEL 1/	407	1,423	40,447	23,667
OLIVE	30,756	38,755	191,622	192,524
RAPESEED	17,300	15,717	103,019	104,464
SOYBEAN	1,702	745	7,520	4,508
OTHER	6,986	7,324	48,344	52,604
TOTAL	62,222	79,915	523,689	483,021
INEDIBLE OILS				
CASTOR	101	3,363	14,096	10,677
TUNG	68	26	1,631	2,137
LINSEED	809	744	3,977	2,809
TOTAL	978	4,132	19,704	15,623
PEANUT BUTTER	2,942	2,614	18,300	13,093
OTHER OILSEEDS & PRODUCTS	216,665	183,627	1,429,903	1,438,942
TOTAL OILSEEDS & PRODUCTS	322,327	288,246	2,149,694	2,065,151
FISH OIL	1,511	1,071	8,731	8,876
FISHMEAL	2,811	4,259	10,845	19,472

SOURCE: MAY 2002 U.S. BUREAU OF THE CENSUS DATA.
1/ INCLUDES SMALL AMOUNTS OF BABASSU OIL.

TABLE 16 -- SELECTED OILSEEDS AND PRODUCTS AVERAGE EXPORT AND IMPORT UNIT VALUES

COMMODITY	UNITS	MARCH 2001	MARCH 2002	OCTOBER- MARCH 2000/01	OCTOBER- MARCH 2001/02
OILSEED EXPORTS:					
SOYBEANS	\$/MT	192	192	191	183
	\$/BU	5.21	5.24	5.19	4.98
PEANUTS 1/	\$/MT	939	841	933	850
	¢/LB	42.60	38.15	42.33	38.53
SUNFLOWERSEED 2/	\$/MT	472	440	457	433
VEGETABLE OIL EXPORTS:					
SOYBEAN	\$/MT	347	380	357	385
	¢/LB	15.73	17.24	16.18	17.47
COTTONSEED	\$/MT	522	481	509	440
	¢/LB	23.66	21.83	23.10	19.96
MEAL EXPORTS:					
SOYBEAN	\$/MT	194	187	205	190
VEGETABLE OIL IMPORTS:					
PALM	\$/MT	265	292	310	262
	¢/LB	12.03	13.24	14.06	11.88
PALM KERNEL	\$/MT	370	368	482	393
	¢/LB	16.79	16.68	21.88	17.81
COCONUT	\$/MT	327	232	393	300
	¢/LB	14.82	10.51	17.81	13.60
RAPESEED	\$/MT	380	421	382	419
	¢/LB	17.24	19.11	17.34	19.00
OLIVE	\$/MT	1,893	1,957	1,904	1,886
FISHMEAL IMPORTS:	\$/MT	523	598	524	563

SOURCE: MAY 2002 U.S. BUREAU OF THE CENSUS DATA.

1 INCLUDES UNSHELLED CONVERTED TO SHELLED BASIS

2 INCLUDES SHELLED CONVERTED TO AN INSHELL BASIS

NOTE: U.S. EXPORT VALUE IS THE VALUE AT THE PORT OF EXPORTATION AND IS BASED ON THE SELLING PRICE (OR COST IF NOT SOLD), INCLUDING INLAND FREIGHT, INSURANCE, AND OTHER CHARGES TO THE PORT

U.S. IMPORT VALUE IS GENERALLY THE MARKET VALUE IN THE FOREIGN COUNTRY, AND EXCLUDES IMPORT DUTIES, OCEAN FREIGHT, AND MARINE INSURANCE.