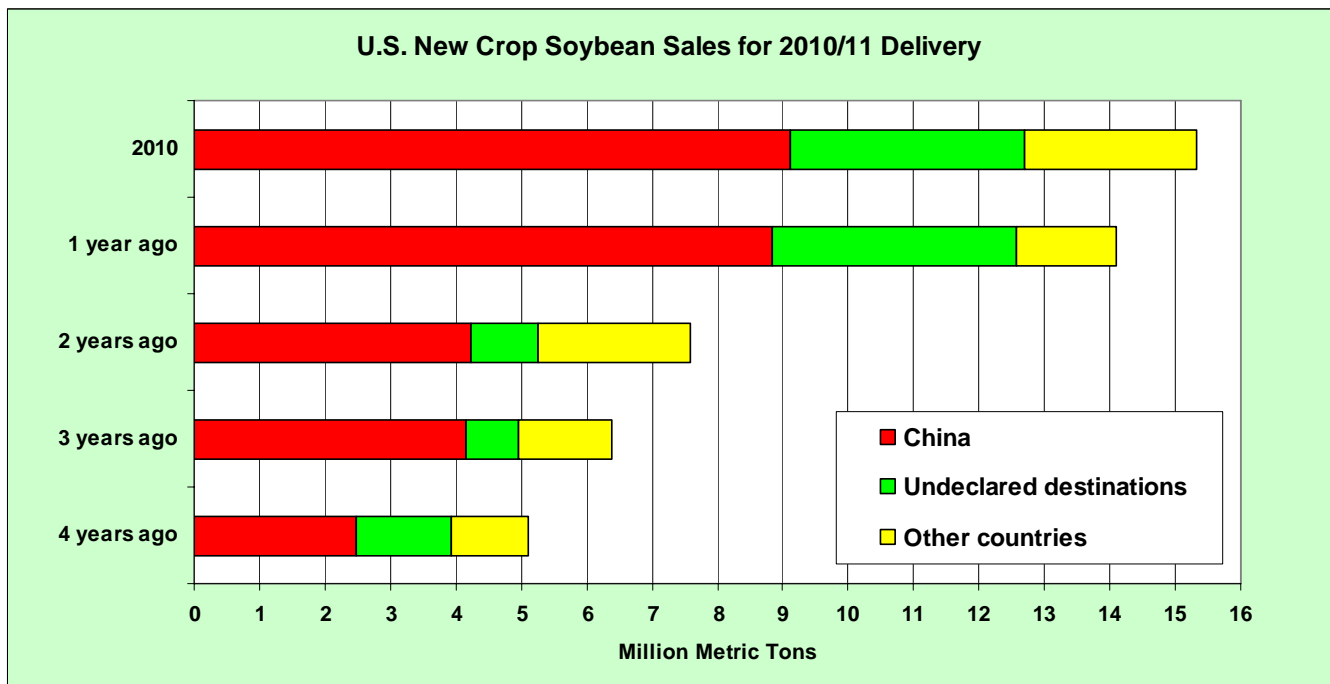




# Oilseeds: World Markets and Trade

## Record Early-Season Soybean Sales Brighten U.S. Export Outlook



The August 26 *Export Sales Report* shows new crop soybean sales at 15.3 million tons. While continued strong sales to China reflect robust crush activity stimulated by rising demand for vegetable oil and protein feeds, larger sales to other countries are also strong. In particular, bean sales to Egypt have dramatically grown as its crushing sector develops and demand for soybean meal expands. Smaller global feed grain supplies may have also triggered the rush for soybean purchases to secure adequate supplies, even though U.S. soybean prices continue to strengthen.

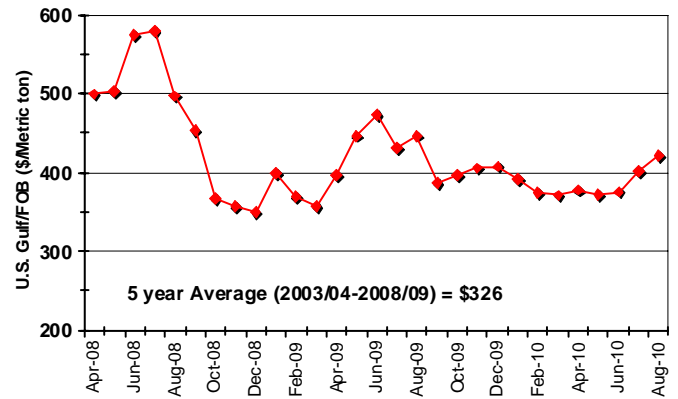
However, the record pace of U.S. sales is not currently expected to translate to record export volumes in the coming year, given projected large crops in South America. The early-season sales however do bode well for another good year of U.S. exports.

## PRICES

U.S. soybean export bids, FOB Gulf, in August averaged \$421 per ton, up \$19 per ton from last month. Continued strong demand for export combined with rising prices for other feed grains have boosted soybean bids higher.

As of the week-ending August 26, U.S. soybean sales commitments (outstanding sales plus accumulated exports) to China totaled 23.2 million tons, compared to 19.8 million a year ago. Total commitments to the world amounted to a record 41.3 million tons compared to 36.1 million for the same period last year.

## **U.S. Gulf Soybean Export Bids**



## TRADE CHANGES IN 2010/11

- U.S. soybean exports are up 1.4 million tons to 40.4 million on a larger crop and stronger early-season sales.
- Argentina's and Brazil's soybean exports are up 1.0 million tons each to 13.5 million and 30.4 million, respectively, in response to strong demand from China.
- Canada's rapeseed exports are boosted 0.7 million tons to 6.0 million on a larger crop and improving demand in Asian countries.
- China's soybean imports are boosted 3.0 million tons to a record 55.0 million in response to continued strong crush demand for meal and oil.
- EU-27 soybean imports are up 0.4 million tons to 13.0 million on improved crush demand.
- Indonesia's palm oil exports are cut 0.9 million tons to 18.1 million due to reduced supplies.
- India's palm oil imports are cut 0.5 million tons to 7.0 million tons in response to smaller exportable supplies in Indonesia.

**Table 01: Major Oilseeds: World Supply and Distribution (Commodity View)**

Million Metric Tons

	2006/07	2007/08	2008/09	2009/10	Aug 2010/11	Sep 2010/11
<b>Production</b>						
Oilseed, Copra	5.27	5.72	5.88	5.88	5.96	5.96
Oilseed, Cottonseed	46.01	45.89	41.11	39.19	43.78	43.79
Oilseed, Palm Kernel	10.18	11.10	11.81	12.14	13.29	12.85
Oilseed, Peanut	31.03	32.59	34.47	32.97	34.67	34.49
Oilseed, Rapeseed	45.09	48.51	57.92	59.93	56.74	57.14
Oilseed, Soybean	237.13	221.01	211.96	259.89	253.69	254.89
Oilseed, Sunflowerseed	29.74	27.20	33.28	30.38	31.61	31.51
<b>Total</b>	<b>404.45</b>	<b>392.01</b>	<b>396.44</b>	<b>440.38</b>	<b>439.74</b>	<b>440.62</b>
<b>Imports</b>						
Oilseed, Copra	0.09	0.11	0.10	0.10	0.10	0.10
Oilseed, Cottonseed	0.84	0.75	0.55	0.69	0.66	0.66
Oilseed, Palm Kernel	0.13	0.14	0.07	0.04	0.04	0.04
Oilseed, Peanut	1.95	2.04	1.87	1.84	1.85	1.85
Oilseed, Rapeseed	7.01	7.56	12.13	10.29	9.13	9.48
Oilseed, Soybean	69.07	78.12	77.17	87.13	89.54	92.94
Oilseed, Sunflowerseed	1.76	1.25	1.79	1.73	1.30	1.30
<b>Total</b>	<b>80.84</b>	<b>89.96</b>	<b>93.67</b>	<b>101.82</b>	<b>102.61</b>	<b>106.36</b>
<b>Exports</b>						
Oilseed, Copra	0.13	0.13	0.12	0.14	0.15	0.15
Oilseed, Cottonseed	0.84	0.84	0.54	0.59	0.82	0.81
Oilseed, Palm Kernel	0.09	0.05	0.05	0.06	0.06	0.06
Oilseed, Peanut	2.39	2.45	2.34	2.20	2.32	2.32
Oilseed, Rapeseed	6.62	8.12	12.02	10.68	8.98	9.39
Oilseed, Soybean	71.32	79.59	77.25	90.84	91.11	94.52
Oilseed, Sunflowerseed	1.90	1.48	2.15	1.79	1.48	1.43
<b>Total</b>	<b>83.28</b>	<b>92.67</b>	<b>94.48</b>	<b>106.29</b>	<b>104.92</b>	<b>108.68</b>
<b>Crush</b>						
Oilseed, Copra	5.16	5.66	5.65	5.81	5.90	5.90
Oilseed, Cottonseed	33.70	34.35	31.85	30.72	32.67	32.81
Oilseed, Palm Kernel	10.04	11.01	11.56	12.04	13.07	12.65
Oilseed, Peanut	14.13	15.10	15.42	14.35	15.53	15.43
Oilseed, Rapeseed	43.62	46.65	52.06	56.66	55.77	55.86
Oilseed, Soybean	195.48	202.05	192.71	207.92	219.75	221.19
Oilseed, Sunflowerseed	26.05	24.27	29.00	28.04	28.29	28.31
<b>Total</b>	<b>328.17</b>	<b>339.09</b>	<b>338.25</b>	<b>355.55</b>	<b>371.00</b>	<b>372.17</b>
<b>Ending Stocks</b>						
Oilseed, Copra	0.10	0.11	0.29	0.29	0.28	0.28
Oilseed, Cottonseed	1.33	1.22	0.82	0.71	1.06	1.09
Oilseed, Palm Kernel	0.18	0.20	0.36	0.31	0.38	0.36
Oilseed, Peanut	1.21	1.07	1.50	1.34	1.18	1.27
Oilseed, Rapeseed	4.66	3.55	6.76	6.63	4.90	5.20
Oilseed, Soybean	63.16	52.89	43.97	62.85	64.73	63.61
Oilseed, Sunflowerseed	2.81	2.63	2.79	1.67	1.31	1.32
<b>Total</b>	<b>73.45</b>	<b>61.66</b>	<b>56.48</b>	<b>73.80</b>	<b>73.83</b>	<b>73.12</b>

Totals may not add due to rounding

**Table 02: Major Protein Meals: World Supply and Distribution (Commodity View)**

Million Metric Tons

	2006/07	2007/08	2008/09	2009/10	Aug 2010/11	Sep 2010/11
<b>Production</b>						
Meal, Copra	1.71	1.87	1.87	1.92	1.95	1.95
Meal, Cottonseed	15.33	15.59	14.35	13.98	14.86	14.93
Meal, Fish	5.07	5.24	5.10	4.50	4.76	4.99
Meal, Palm Kernel	5.33	5.86	6.15	6.40	6.94	6.72
Meal, Peanut	5.48	5.94	6.07	5.64	6.10	6.06
Meal, Rapeseed	25.91	27.64	30.80	33.60	33.06	33.10
Meal, Soybean	153.77	158.54	151.43	163.76	173.13	174.29
Meal, Sunflowerseed	11.48	10.60	12.78	12.35	12.47	12.48
<b>Total</b>	<b>224.07</b>	<b>231.28</b>	<b>228.55</b>	<b>242.14</b>	<b>253.27</b>	<b>254.51</b>
<b>Imports</b>						
Meal, Copra	0.57	0.70	0.59	0.77	0.75	0.75
Meal, Cottonseed	0.44	0.42	0.34	0.34	0.35	0.35
Meal, Fish	2.69	3.01	3.11	2.82	2.81	3.15
Meal, Palm Kernel	3.80	4.23	4.06	4.21	4.26	4.36
Meal, Peanut	0.15	0.13	0.05	0.06	0.04	0.04
Meal, Rapeseed	3.05	3.56	3.53	3.53	3.65	3.73
Meal, Soybean	52.55	54.07	51.18	53.21	55.38	55.63
Meal, Sunflowerseed	3.35	2.78	3.91	4.06	4.08	4.08
<b>Total</b>	<b>66.60</b>	<b>68.89</b>	<b>66.78</b>	<b>69.00</b>	<b>71.33</b>	<b>72.10</b>
<b>Exports</b>						
Meal, Copra	0.70	0.85	0.53	0.91	0.80	0.80
Meal, Cottonseed	0.41	0.42	0.39	0.35	0.38	0.39
Meal, Fish	2.59	2.85	2.95	2.49	2.59	2.93
Meal, Palm Kernel	3.94	4.40	4.64	4.87	5.07	5.07
Meal, Peanut	0.20	0.18	0.09	0.12	0.11	0.11
Meal, Rapeseed	2.96	3.69	3.55	3.51	3.82	3.77
Meal, Soybean	54.62	56.16	52.82	55.28	57.74	57.66
Meal, Sunflowerseed	3.49	3.28	4.30	4.23	4.33	4.33
<b>Total</b>	<b>68.91</b>	<b>71.83</b>	<b>69.27</b>	<b>71.76</b>	<b>74.83</b>	<b>75.06</b>
<b>Domestic Consumption</b>						
Meal, Copra	1.56	1.66	1.78	1.95	1.92	1.92
Meal, Cottonseed	15.42	15.65	14.35	13.92	14.83	14.90
Meal, Fish	5.00	5.37	5.34	4.90	5.00	5.25
Meal, Palm Kernel	5.24	5.72	5.65	5.78	6.02	5.98
Meal, Peanut	5.47	5.90	6.00	5.60	6.04	6.00
Meal, Rapeseed	26.35	27.51	30.80	33.60	32.91	33.07
Meal, Soybean	151.28	156.47	151.94	161.04	170.56	171.94
Meal, Sunflowerseed	11.39	10.03	12.09	12.38	12.21	12.22
<b>Total</b>	<b>221.71</b>	<b>228.29</b>	<b>227.95</b>	<b>239.17</b>	<b>249.48</b>	<b>251.27</b>
<b>Ending Stocks</b>						
Meal, Copra	0.10	0.17	0.31	0.14	0.12	0.12
Meal, Cottonseed	0.22	0.15	0.11	0.16	0.16	0.16
Meal, Fish	0.31	0.34	0.25	0.18	0.14	0.14
Meal, Palm Kernel	0.27	0.24	0.16	0.12	0.32	0.16
Meal, Peanut	0.02	0.02	0.05	0.03	0.02	0.02
Meal, Rapeseed	0.25	0.25	0.24	0.25	0.23	0.23
Meal, Soybean	6.38	6.36	4.23	4.87	5.09	5.19
Meal, Sunflowerseed	0.21	0.28	0.58	0.37	0.37	0.38
<b>Total</b>	<b>7.76</b>	<b>7.81</b>	<b>5.92</b>	<b>6.13</b>	<b>6.46</b>	<b>6.41</b>

Totals may not add due to rounding

**Table 03: Major Vegetable Oils: World Supply and Distribution (Commodity View)**

Million Metric Tons

	2006/07	2007/08	2008/09	2009/10	Aug 2010/11	Sep 2010/11
<b>Production</b>						
Oil, Coconut	3.22	3.53	3.52	3.62	3.68	3.68
Oil, Cottonseed	5.13	5.22	4.82	4.67	4.96	4.99
Oil, Olive	2.91	2.84	2.95	2.91	2.94	2.94
Oil, Palm	37.25	40.95	43.86	45.00	49.34	47.84
Oil, Palm Kernel	4.48	4.90	5.19	5.40	5.85	5.68
Oil, Peanut	4.53	4.91	5.00	4.66	5.05	5.02
Oil, Rapeseed	17.12	18.39	20.45	22.31	21.95	21.97
Oil, Soybean	36.33	37.57	35.70	38.44	40.82	41.10
Oil, Sunflowerseed	10.60	9.92	11.87	11.47	11.55	11.56
<b>Total</b>	<b>121.55</b>	<b>128.22</b>	<b>133.36</b>	<b>138.47</b>	<b>146.14</b>	<b>144.76</b>
<b>Imports</b>						
Oil, Coconut	1.87	1.95	1.65	2.02	1.99	2.02
Oil, Cottonseed	0.08	0.09	0.08	0.06	0.06	0.06
Oil, Olive	0.66	0.59	0.57	0.57	0.65	0.61
Oil, Palm	26.74	30.78	34.06	34.72	37.30	37.03
Oil, Palm Kernel	2.07	2.10	2.33	2.44	2.50	2.50
Oil, Peanut	0.18	0.15	0.14	0.18	0.16	0.16
Oil, Rapeseed	2.20	2.02	2.44	2.76	2.75	2.75
Oil, Soybean	9.92	10.50	8.96	8.70	8.84	8.86
Oil, Sunflowerseed	3.33	2.73	3.97	3.90	3.99	3.96
<b>Total</b>	<b>47.04</b>	<b>50.90</b>	<b>54.20</b>	<b>55.35</b>	<b>58.24</b>	<b>57.94</b>
<b>Exports</b>						
Oil, Coconut	1.74	1.92	1.49	2.11	1.96	1.96
Oil, Cottonseed	0.16	0.17	0.17	0.11	0.15	0.15
Oil, Olive	0.72	0.65	0.64	0.63	0.63	0.64
Oil, Palm	27.54	32.19	34.58	35.48	38.06	37.51
Oil, Palm Kernel	2.13	2.29	2.60	3.08	3.22	3.22
Oil, Peanut	0.17	0.16	0.19	0.16	0.15	0.15
Oil, Rapeseed	2.03	1.91	2.42	2.57	2.60	2.56
Oil, Soybean	10.56	10.89	9.12	8.99	8.99	9.06
Oil, Sunflowerseed	4.04	3.48	4.59	4.59	4.42	4.38
<b>Total</b>	<b>49.08</b>	<b>53.67</b>	<b>55.81</b>	<b>57.72</b>	<b>60.18</b>	<b>59.63</b>
<b>Domestic Consumption</b>						
Oil, Coconut	3.28	3.45	3.36	3.78	3.75	3.77
Oil, Cottonseed	5.04	5.11	4.78	4.63	4.88	4.91
Oil, Olive	2.89	2.94	2.99	3.01	3.00	3.01
Oil, Palm	35.88	39.75	42.43	45.00	47.95	47.60
Oil, Palm Kernel	4.41	4.59	4.88	4.94	5.16	5.03
Oil, Peanut	4.69	4.84	4.86	4.83	4.97	4.93
Oil, Rapeseed	17.52	18.47	20.13	22.13	22.24	22.30
Oil, Soybean	35.39	37.76	35.91	38.09	40.97	41.31
Oil, Sunflowerseed	10.19	8.97	10.67	11.34	11.28	11.27
<b>Total</b>	<b>119.30</b>	<b>125.87</b>	<b>130.02</b>	<b>137.75</b>	<b>144.19</b>	<b>144.13</b>
<b>Ending Stocks</b>						
Oil, Coconut	0.29	0.40	0.72	0.47	0.42	0.42
Oil, Cottonseed	0.22	0.24	0.18	0.17	0.16	0.17
Oil, Olive	1.09	0.93	0.82	0.65	0.75	0.56
Oil, Palm	4.73	4.51	5.43	4.68	5.26	4.43
Oil, Palm Kernel	0.49	0.61	0.65	0.46	0.45	0.39
Oil, Peanut	0.08	0.14	0.23	0.08	0.17	0.17
Oil, Rapeseed	0.45	0.47	0.83	1.19	1.05	1.05
Oil, Soybean	3.70	3.11	2.73	2.79	2.45	2.38
Oil, Sunflowerseed	0.66	0.86	1.45	0.88	0.76	0.75
<b>Total</b>	<b>11.71</b>	<b>11.28</b>	<b>13.02</b>	<b>11.37</b>	<b>11.46</b>	<b>10.31</b>

Totals may not add due to rounding

**Table 04: Major Oilseeds: World Supply and Distribution (Country View)**

Million Metric Tons

	2006/07	2007/08	2008/09	2009/10	Aug 2010/11	Sep 2010/11
<b>Production</b>						
United States	96.84	82.45	89.20	98.90	103.34	104.81
Brazil	62.01	64.23	60.28	71.46	68.00	68.00
China	55.23	53.35	58.12	57.27	56.81	56.22
Argentina	53.36	51.89	35.51	57.94	54.52	54.52
India	29.92	33.95	33.40	31.42	34.65	34.65
Other	107.09	106.13	119.93	123.39	122.42	122.43
<b>Total</b>	<b>404.45</b>	<b>392.01</b>	<b>396.44</b>	<b>440.38</b>	<b>439.74</b>	<b>440.62</b>
<b>Imports</b>						
China	29.70	38.64	44.14	52.12	53.26	56.51
EU-27	17.16	17.02	18.00	16.17	15.66	16.16
Japan	6.54	6.51	5.74	6.14	6.00	6.10
Mexico	5.42	5.29	4.77	5.10	5.14	5.14
Taiwan	2.44	2.16	2.22	2.51	2.51	2.51
Turkey	1.94	2.14	1.68	2.41	2.17	2.07
Thailand	1.58	1.82	1.57	1.64	1.88	1.88
Indonesia	1.52	1.40	1.63	1.70	1.80	1.80
Egypt	1.34	1.08	1.60	1.67	1.70	1.70
Russia	0.18	0.61	0.97	1.20	1.28	1.38
Other	13.02	13.30	11.37	11.17	11.23	11.13
<b>Total</b>	<b>80.84</b>	<b>89.96</b>	<b>93.67</b>	<b>101.82</b>	<b>102.61</b>	<b>106.36</b>
<b>Exports</b>						
United States	31.65	33.05	35.70	41.61	40.31	41.57
Brazil	23.54	25.44	30.13	28.56	29.51	30.51
Argentina	10.23	14.40	6.31	12.13	13.18	14.18
Canada	7.26	7.64	10.00	9.34	7.66	8.41
Paraguay	4.39	5.55	2.67	5.43	4.89	4.89
Ukraine	1.24	1.17	3.68	2.36	2.20	2.03
Australia	0.26	0.50	1.16	1.24	1.71	1.71
Other	4.72	4.93	4.83	5.63	5.46	5.39
<b>Total</b>	<b>83.28</b>	<b>92.67</b>	<b>94.48</b>	<b>106.29</b>	<b>104.92</b>	<b>108.68</b>
<b>Crush</b>						
China	65.28	68.47	73.12	80.99	88.11	88.82
United States	53.48	53.50	49.34	51.41	49.28	49.44
Argentina	36.98	39.31	35.00	36.39	43.24	43.48
EU-27	36.32	38.05	39.51	41.62	40.62	40.82
Brazil	33.47	34.68	34.06	35.47	35.37	35.37
India	24.49	27.79	26.14	25.20	27.80	28.00
Russia	7.16	6.71	8.30	8.69	8.63	8.56
Indonesia	5.74	6.20	6.70	7.17	7.96	7.62
Ukraine	5.39	4.69	6.96	7.00	6.74	6.72
Canada	5.10	5.53	5.57	6.06	6.60	6.60
Mexico	5.70	5.64	5.19	5.43	5.48	5.48
Malaysia	4.40	4.97	4.91	5.11	5.28	5.28
Pakistan	5.16	4.65	4.84	5.21	5.09	5.09
Japan	5.17	5.17	4.73	4.85	4.74	4.82
Turkey	3.08	2.99	2.58	2.80	2.81	2.81
Other	31.25	30.76	31.31	32.16	33.29	33.31
<b>Total</b>	<b>328.17</b>	<b>339.09</b>	<b>338.25</b>	<b>355.55</b>	<b>371.00</b>	<b>372.17</b>
<b>Ending Stocks</b>						
Argentina	24.04	23.59	17.46	25.28	22.10	20.48
China	2.70	4.25	10.44	16.38	14.91	17.06
Brazil	18.33	19.11	12.16	16.65	16.59	15.49
United States	17.02	6.91	5.62	5.50	11.32	11.02
EU-27	3.22	2.06	3.26	2.67	1.77	2.02
Other	8.14	5.75	7.53	7.31	7.15	7.06
<b>Total</b>	<b>73.45</b>	<b>61.66</b>	<b>56.48</b>	<b>73.80</b>	<b>73.83</b>	<b>73.12</b>

Major Oilseeds includes Copra, Cottonseed, Palm Kernel, Peanut, Rapeseed, Soybeans and Sunflowerseeds.

**Table 05: Major Protein Meals: World Supply and Distribution (Country View)**

Million Metric Tons

	2006/07	2007/08	2008/09	2009/10	Aug 2010/11	Sep 2010/11
<b>Production</b>						
China	43.55	46.09	49.13	55.51	61.07	61.76
United States	41.45	40.87	37.71	39.90	38.03	38.09
Argentina	27.53	29.06	25.97	27.34	32.13	32.31
Brazil	25.26	26.14	25.76	26.85	26.74	26.74
EU-27	24.29	25.35	25.75	26.87	26.28	26.43
Other	62.01	63.77	64.22	65.67	69.03	69.18
<b>Total</b>	<b>224.07</b>	<b>231.28</b>	<b>228.55</b>	<b>242.14</b>	<b>253.27</b>	<b>254.51</b>
<b>Imports</b>						
EU-27	27.02	28.55	26.68	27.24	28.38	28.48
Korea, South	3.15	3.32	3.18	3.42	3.34	3.46
Vietnam	2.55	2.54	2.78	3.12	3.38	3.38
Thailand	2.64	2.28	2.59	2.87	2.85	3.00
Indonesia	2.41	2.63	2.56	2.67	2.83	2.83
Japan	2.17	2.11	2.23	2.32	2.31	2.37
China	1.38	1.96	1.81	2.00	1.68	2.01
Other	25.27	25.50	24.95	25.37	26.55	26.57
<b>Total</b>	<b>66.60</b>	<b>68.89</b>	<b>66.78</b>	<b>69.00</b>	<b>71.33</b>	<b>72.10</b>
<b>Exports</b>						
Argentina	26.42	27.89	24.76	26.04	30.35	30.35
Brazil	12.72	12.15	13.11	12.50	12.41	12.45
United States	8.26	8.71	7.95	10.55	8.33	8.51
India	5.22	6.60	4.63	3.56	4.00	4.00
Indonesia	2.10	2.44	2.68	2.83	3.00	3.00
Canada	1.63	1.99	1.95	2.05	2.32	2.32
Malaysia	2.10	2.16	2.11	2.20	2.25	2.25
Other	10.48	9.89	12.08	12.03	12.18	12.18
<b>Total</b>	<b>68.91</b>	<b>71.83</b>	<b>69.27</b>	<b>71.76</b>	<b>74.83</b>	<b>75.06</b>
<b>Domestic Consumption</b>						
China	43.95	47.26	49.56	55.91	60.91	62.23
EU-27	50.45	52.90	52.20	53.24	53.68	53.94
United States	34.86	34.19	31.66	30.51	31.51	31.40
Brazil	12.26	13.50	13.48	14.06	14.54	14.56
India	9.09	9.49	10.30	10.89	11.95	12.04
Japan	5.92	5.91	5.82	5.85	5.80	5.91
Mexico	6.04	5.54	5.35	5.65	5.82	5.83
Thailand	4.25	4.12	4.26	4.54	4.73	4.81
Korea, South	3.99	4.03	3.93	4.13	4.05	4.16
Russia	3.11	3.24	3.38	3.64	3.78	3.77
Other	47.79	48.10	48.02	50.74	52.70	52.63
<b>Total</b>	<b>221.71</b>	<b>228.29</b>	<b>227.95</b>	<b>239.17</b>	<b>249.48</b>	<b>251.27</b>
<b>SME</b>						
China	41.78	45.36	47.31	53.25	58.49	59.84
EU-27	46.43	48.51	47.24	48.00	48.54	48.84
United States	34.20	33.42	30.96	29.98	30.79	30.66
Brazil	12.06	13.28	13.29	13.87	14.33	14.35
India	7.73	8.31	8.98	9.43	10.47	10.55
Japan	5.82	5.80	5.67	5.69	5.65	5.77
Mexico	5.74	5.20	5.03	5.28	5.46	5.48
Other	55.47	55.47	55.68	58.72	60.81	60.92
<b>Total</b>	<b>209.23</b>	<b>215.36</b>	<b>214.17</b>	<b>224.22</b>	<b>234.53</b>	<b>236.40</b>
<b>Ending Stocks</b>						
Brazil	1.93	2.60	1.86	2.25	2.11	2.10
Argentina	1.56	1.31	1.07	0.96	1.29	1.40
EU-27	1.08	1.26	0.55	0.48	0.54	0.55
United States	0.39	0.33	0.25	0.34	0.33	0.33
Japan	0.35	0.34	0.23	0.25	0.25	0.25
Other	2.46	1.97	1.97	1.87	1.93	1.77
<b>Total</b>	<b>7.76</b>	<b>7.81</b>	<b>5.92</b>	<b>6.13</b>	<b>6.46</b>	<b>6.41</b>

Major Protein Meals include Copra, Cottonseed, Fish, Palm Kernel, Peanut, Rapeseed, Soybean, and Sunflower Meal.

**Table 06: Major Vegetable Oils: World Supply and Distribution (Country View)**

Million Metric Tons

	2006/07	2007/08	2008/09	2009/10	Aug 2010/11	Sep 2010/11
<b>Production</b>						
Indonesia	19.37	20.98	23.69	24.42	28.26	26.62
Malaysia	17.20	19.73	19.42	20.25	20.92	20.92
China	14.27	14.69	16.10	17.74	18.97	19.12
EU-27	13.66	14.28	15.46	16.39	16.00	16.04
United States	10.46	10.55	9.67	10.01	9.75	9.79
Argentina	7.71	8.49	7.37	7.50	9.07	9.12
India	6.40	7.05	6.74	6.49	7.14	7.17
Other	32.49	32.46	34.91	35.66	36.03	35.99
<b>Total</b>	<b>121.55</b>	<b>128.22</b>	<b>133.36</b>	<b>138.47</b>	<b>146.14</b>	<b>144.76</b>
<b>Imports</b>						
China	8.50	8.76	9.77	9.60	10.88	10.73
EU-27	9.02	9.03	9.09	8.57	8.84	8.95
India	5.44	5.92	8.79	8.70	9.39	8.91
United States	2.53	3.11	3.23	3.23	3.27	3.30
Pakistan	1.65	2.28	1.99	2.24	2.34	2.34
Malaysia	0.95	1.36	1.60	1.95	1.86	2.01
Egypt	1.21	1.27	1.69	1.60	1.55	1.55
Bangladesh	1.23	1.13	0.96	1.30	1.26	1.26
Iran	1.17	1.28	1.10	1.17	1.16	1.16
Japan	0.75	0.78	0.75	0.79	0.82	0.82
Other	14.60	15.99	15.24	16.19	16.89	16.92
<b>Total</b>	<b>47.04</b>	<b>50.90</b>	<b>54.20</b>	<b>55.35</b>	<b>58.24</b>	<b>57.94</b>
<b>Exports</b>						
Indonesia	13.39	16.07	18.09	19.00	21.46	20.58
Malaysia	13.74	15.53	16.53	16.96	17.30	17.50
Argentina	6.87	7.05	5.65	5.31	6.30	6.35
Ukraine	1.89	1.35	2.16	2.46	2.19	2.18
Canada	1.30	1.36	1.57	1.75	1.84	1.84
United States	1.33	1.68	1.46	1.91	1.30	1.31
Brazil	2.51	2.44	1.99	1.48	1.27	1.27
Other	8.07	8.19	8.36	8.85	8.52	8.59
<b>Total</b>	<b>49.08</b>	<b>53.67</b>	<b>55.81</b>	<b>57.72</b>	<b>60.18</b>	<b>59.63</b>
<b>Domestic Consumption</b>						
China	22.56	23.34	24.74	27.11	29.80	29.77
EU-27	21.70	22.43	23.08	23.83	24.11	24.29
India	11.81	12.97	14.76	15.63	16.45	16.17
United States	11.71	12.25	11.17	11.26	11.94	12.00
Indonesia	4.98	5.46	5.64	5.80	6.26	6.14
Brazil	4.19	4.76	5.15	5.94	6.17	6.14
Malaysia	4.74	5.00	5.00	5.38	5.33	5.48
Pakistan	2.88	3.19	3.20	3.39	3.46	3.46
Russia	2.83	3.13	3.04	3.03	2.99	2.97
Argentina	0.89	1.43	1.84	2.35	2.68	2.73
Japan	2.19	2.23	2.15	2.16	2.16	2.19
Mexico	2.01	2.02	1.96	2.03	2.10	2.10
Egypt	1.34	1.48	1.68	1.81	1.83	1.83
Nigeria	1.73	1.76	1.78	1.81	1.82	1.82
Thailand	1.05	1.19	1.58	1.76	1.80	1.80
Other	22.70	23.22	23.25	24.47	25.31	25.26
<b>Total</b>	<b>119.30</b>	<b>125.87</b>	<b>130.02</b>	<b>137.75</b>	<b>144.19</b>	<b>144.13</b>
<b>Ending Stocks</b>						
Malaysia	1.92	2.48	1.97	1.84	1.80	1.80
United States	1.74	1.46	1.74	1.81	1.56	1.58
China	0.25	0.23	1.26	1.39	1.37	1.38
EU-27	1.90	1.63	1.83	1.73	1.51	1.31
Indonesia	1.76	1.25	1.24	0.91	1.59	0.86
Other	4.13	4.23	4.99	3.69	3.64	3.39
<b>Total</b>	<b>11.71</b>	<b>11.28</b>	<b>13.02</b>	<b>11.37</b>	<b>11.46</b>	<b>10.31</b>

Major Vegetable Oils includes Coconut, Cottonseed, Olive, Palm, Palm Kernel, Peanut, Rapeseed, Soybean, and Sunflowerseed oil.



**Table 07: Soybeans: World Supply and Distribution**

Thousand Metric Tons

	2006/07	2007/08	2008/09	2009/10	Aug 2010/11	Sep 2010/11
<b>Production</b>						
United States	87,001	72,859	80,749	91,417	93,441	94,789
Brazil	59,000	61,000	57,800	69,000	65,000	65,000
Argentina	48,800	46,200	32,000	54,500	50,000	50,000
China	15,967	14,000	15,540	14,700	14,600	14,400
India	7,690	9,470	9,100	8,750	8,800	8,800
Paraguay	5,856	6,900	4,000	7,200	6,500	6,500
Canada	3,466	2,696	3,336	3,500	3,900	3,950
Other	9,346	7,881	9,439	10,825	11,451	11,451
<b>Total</b>	<b>237,126</b>	<b>221,006</b>	<b>211,964</b>	<b>259,892</b>	<b>253,692</b>	<b>254,890</b>
<b>Imports</b>						
China	28,726	37,816	41,098	50,000	52,000	55,000
EU-27	15,291	15,123	13,213	12,900	12,600	13,000
Japan	4,094	4,014	3,396	3,600	3,660	3,660
Mexico	3,844	3,584	3,327	3,450	3,600	3,600
Taiwan	2,436	2,148	2,216	2,500	2,500	2,500
Thailand	1,532	1,753	1,510	1,590	1,830	1,830
Egypt	1,328	1,061	1,575	1,623	1,650	1,650
Indonesia	1,309	1,147	1,393	1,500	1,600	1,600
Turkey	1,268	1,277	1,007	1,450	1,500	1,400
Russia	34	442	837	1,050	1,130	1,230
Other	9,204	9,753	7,596	7,469	7,470	7,470
<b>Total</b>	<b>69,066</b>	<b>78,118</b>	<b>77,168</b>	<b>87,132</b>	<b>89,540</b>	<b>92,940</b>
<b>Exports</b>						
United States	30,386	31,538	34,817	40,687	39,054	40,415
Brazil	23,485	25,364	29,986	28,450	29,400	30,400
Argentina	9,560	13,839	5,590	11,500	12,500	13,500
Paraguay	4,361	5,400	2,637	5,400	4,835	4,835
Canada	1,683	1,753	2,017	2,200	2,275	2,325
Other	1,840	1,695	2,206	2,603	3,043	3,043
<b>Total</b>	<b>71,315</b>	<b>79,589</b>	<b>77,253</b>	<b>90,840</b>	<b>91,107</b>	<b>94,518</b>
<b>Crush</b>						
China	35,970	39,518	41,035	48,680	55,800	56,700
United States	49,198	49,081	45,230	47,627	44,906	44,906
Argentina	33,586	34,607	31,243	33,450	39,260	39,500
Brazil	31,110	32,117	31,868	33,275	33,000	33,000
EU-27	14,670	14,870	12,860	12,500	12,400	12,600
India	6,485	8,400	7,200	6,840	7,700	7,700
Mexico	3,900	3,620	3,465	3,510	3,670	3,670
Japan	2,925	2,890	2,497	2,530	2,590	2,590
Russia	805	1,051	1,497	1,950	2,180	2,280
Taiwan	2,161	1,965	1,917	2,150	2,225	2,225
Egypt	1,250	1,129	1,545	1,635	1,644	1,644
Thailand	1,406	1,514	1,390	1,450	1,600	1,600
Paraguay	1,355	1,400	1,500	1,550	1,550	1,550
Canada	1,524	1,383	1,286	1,292	1,425	1,425
Bolivia	1,670	1,160	1,350	1,410	1,370	1,370
Other	7,465	7,344	6,829	8,072	8,433	8,433
<b>Total</b>	<b>195,480</b>	<b>202,049</b>	<b>192,712</b>	<b>207,921</b>	<b>219,753</b>	<b>221,193</b>
<b>Ending Stocks</b>						
Argentina	22,606	21,760	16,588	24,550	21,560	19,900
China	2,700	4,245	9,048	14,268	13,448	15,498
Brazil	18,189	18,898	12,037	16,597	16,472	15,372
United States	15,617	5,580	3,761	4,072	9,797	9,512
India	218	96	666	1,150	950	750
Other	3,825	2,307	1,873	2,212	2,502	2,574
<b>Total</b>	<b>63,155</b>	<b>52,886</b>	<b>43,973</b>	<b>62,849</b>	<b>64,729</b>	<b>63,606</b>

Most countries are on an October/September Marketing Year (MY). The United States, Mexico, and Thailand are on a September/August MY. Canada is on an August/July MY. Paraguay is on a March/February MY and Turkey is on an March/February MY.

**Table 08: Soybean Meal: World Supply and Distribution**

Thousand Metric Tons

	2006/07	2007/08	2008/09	2009/10	Aug 2010/11	Sep 2010/11
<b>Production</b>						
China	28,465	31,280	32,475	38,525	44,160	44,906
United States	39,037	38,359	35,473	37,671	35,593	35,593
Argentina	26,061	27,071	24,363	26,080	30,430	30,610
Brazil	24,110	24,890	24,700	25,790	25,580	25,580
EU-27	11,550	11,715	10,131	9,848	9,769	9,926
India	5,176	6,705	5,746	5,460	6,150	6,150
Mexico	3,075	2,814	2,727	2,760	2,890	2,890
Other	16,297	15,707	15,818	17,624	18,553	18,632
<b>Total</b>	<b>153,771</b>	<b>158,541</b>	<b>151,433</b>	<b>163,758</b>	<b>173,125</b>	<b>174,287</b>
<b>Imports</b>						
EU-27	22,213	24,074	20,980	21,800	23,050	23,050
Vietnam	2,291	2,296	2,521	2,800	3,000	3,000
Indonesia	2,237	2,429	2,339	2,450	2,600	2,600
Thailand	2,275	1,935	2,160	2,450	2,400	2,550
Japan	1,737	1,747	1,812	1,950	1,930	1,930
Korea, South	1,870	1,760	1,813	1,790	1,850	1,850
Mexico	1,780	1,401	1,518	1,450	1,620	1,620
Philippines	1,357	1,213	1,295	1,350	1,375	1,375
Iran	817	891	1,044	1,170	1,220	1,220
Canada	1,415	1,511	1,251	1,200	1,150	1,150
Other	14,555	14,812	14,451	14,801	15,189	15,289
<b>Total</b>	<b>52,547</b>	<b>54,069</b>	<b>51,184</b>	<b>53,211</b>	<b>55,384</b>	<b>55,634</b>
<b>Exports</b>						
Argentina	25,625	26,816	24,025	25,380	29,550	29,550
Brazil	12,715	12,138	13,109	12,500	12,410	12,450
United States	7,987	8,384	7,708	10,342	8,074	8,255
India	4,143	5,285	3,808	2,750	3,200	3,200
China	867	634	1,017	1,250	1,500	1,200
Other	3,281	2,907	3,150	3,058	3,006	3,006
<b>Total</b>	<b>54,618</b>	<b>56,164</b>	<b>52,817</b>	<b>55,280</b>	<b>57,740</b>	<b>57,661</b>
<b>Domestic Consumption</b>						
China	27,630	30,849	31,673	37,340	42,710	43,856
EU-27	33,228	35,169	31,579	31,094	32,300	32,457
United States	31,166	30,148	27,898	27,397	27,669	27,488
Brazil	11,118	12,257	12,418	13,000	13,380	13,400
Mexico	4,871	4,240	4,190	4,260	4,500	4,500
Japan	3,921	3,945	3,846	3,871	3,907	3,907
Thailand	3,348	3,250	3,200	3,560	3,648	3,798
Vietnam	2,291	2,296	2,478	2,800	3,000	3,000
India	1,020	1,450	1,950	2,650	2,955	2,955
Indonesia	2,236	2,370	2,383	2,450	2,600	2,600
Korea, South	2,661	2,506	2,452	2,441	2,496	2,496
Iran	1,566	1,827	1,794	2,188	2,238	2,238
Canada	2,476	2,485	2,185	2,090	2,140	2,140
Russia	1,442	1,560	1,646	1,874	2,021	2,099
Taiwan	1,750	1,555	1,609	1,685	1,730	1,730
Other	20,558	20,558	20,635	22,341	23,261	23,276
<b>Total</b>	<b>151,282</b>	<b>156,465</b>	<b>151,936</b>	<b>161,041</b>	<b>170,555</b>	<b>171,940</b>
<b>Ending Stocks</b>						
Brazil	1,913	2,588	1,844	2,234	2,094	2,084
Argentina	1,504	1,137	845	873	1,125	1,235
EU-27	859	1,065	130	234	303	303
United States	311	266	213	272	272	272
Japan	292	312	195	216	227	227
Other	1,501	993	998	1,044	1,071	1,072
<b>Total</b>	<b>6,380</b>	<b>6,361</b>	<b>4,225</b>	<b>4,873</b>	<b>5,092</b>	<b>5,193</b>

Most countries are on an October/September Marketing Year (MY). The Mexico and Thailand are on a September/August MY. Canada is on an August/July MY. Paraguay is on a March/February MY. Vietnam and the Philippines are on a January/December MY and Bolivia is on a March/February MY.

**Table 09: Soybean Oil: World Supply and Distribution**

Thousand Metric Tons

	2006/07	2007/08	2008/09	2009/10	Aug 2010/11	Sep 2010/11
<b>Production</b>						
China	6,410	7,045	7,314	8,677	9,946	10,121
United States	9,294	9,335	8,503	8,861	8,532	8,532
Argentina	6,424	6,627	5,914	6,370	7,520	7,565
Brazil	5,970	6,160	6,120	6,390	6,330	6,330
EU-27	2,640	2,667	2,314	2,250	2,232	2,268
India	1,157	1,499	1,287	1,225	1,385	1,385
Mexico	685	636	609	616	645	645
Other	3,745	3,602	3,634	4,049	4,231	4,249
<b>Total</b>	<b>36,325</b>	<b>37,571</b>	<b>35,695</b>	<b>38,438</b>	<b>40,821</b>	<b>41,095</b>
<b>Imports</b>						
China	2,404	2,727	2,494	1,600	2,150	2,000
India	1,447	733	1,060	1,500	1,180	1,200
EU-27	991	1,040	793	550	400	550
Morocco	360	421	327	380	390	390
Algeria	295	383	365	375	365	365
Bangladesh	327	401	254	398	360	360
Venezuela	351	363	325	310	310	310
Iran	606	545	260	300	300	300
Korea, South	302	296	266	300	300	300
Peru	300	292	272	280	285	285
Other	2,532	3,295	2,540	2,706	2,799	2,799
<b>Total</b>	<b>9,915</b>	<b>10,496</b>	<b>8,956</b>	<b>8,699</b>	<b>8,839</b>	<b>8,859</b>
<b>Exports</b>						
Argentina	5,970	5,789	4,704	4,400	5,200	5,250
Brazil	2,462	2,388	1,910	1,435	1,215	1,215
United States	851	1,320	995	1,520	952	953
EU-27	243	333	399	400	300	300
Paraguay	258	299	243	250	252	252
Russia	5	10	127	170	200	220
Bolivia	231	141	210	190	176	176
Other	543	609	534	620	691	691
<b>Total</b>	<b>10,563</b>	<b>10,889</b>	<b>9,122</b>	<b>8,985</b>	<b>8,986</b>	<b>9,057</b>
<b>Domestic Consumption</b>						
China	8,670	9,693	9,486	10,424	12,011	12,070
United States	8,426	8,317	7,378	7,235	7,892	7,892
Brazil	3,395	3,920	4,274	5,050	5,250	5,210
India	2,500	2,330	2,300	2,670	2,600	2,690
EU-27	3,368	3,377	2,779	2,380	2,360	2,543
Argentina	459	1,026	1,425	1,912	2,232	2,282
Mexico	820	839	800	800	865	865
Egypt	379	659	605	540	542	542
Japan	577	573	536	490	513	513
Morocco	444	466	415	435	455	455
Korea, South	436	444	447	445	453	453
Iran	715	676	394	478	450	450
Bangladesh	342	380	355	380	392	392
Taiwan	380	382	380	378	386	386
Algeria	295	355	374	370	371	371
Other	4,180	4,324	3,964	4,103	4,199	4,199
<b>Total</b>	<b>35,386</b>	<b>37,761</b>	<b>35,912</b>	<b>38,090</b>	<b>40,971</b>	<b>41,313</b>
<b>Ending Stocks</b>						
United States	1,399	1,127	1,298	1,454	1,180	1,193
Brazil	510	429	370	325	260	280
China	250	227	466	239	218	220
Argentina	485	297	82	140	248	173
EU-27	214	211	140	160	132	135
Other	837	821	373	473	411	374
<b>Total</b>	<b>3,695</b>	<b>3,112</b>	<b>2,729</b>	<b>2,791</b>	<b>2,449</b>	<b>2,375</b>

Most countries are on an October/September Marketing Year (MY). Mexico is on a September/August MY. Peru is on an January/December MY and Paraguay and Bolivia are on a March/February MY.

**Table 10: Soybeans and Products: World Trade**  
**Thousand Metric Tons**

Marketing Year	Meal, Soybean			Oil, Soybean			Oilseed, Soybean			
	2008/09	2009/10	2010/11	2008/09	2009/10	2010/11	2008/09	2009/10	2010/11	
<b>Exports</b>										
North America		7,796	10,473	8,392	1,034	1,567	1,005	36,834	42,887	42,740
Canada	(Aug-Jul)	82	124	130	38	45	50	2,017	2,200	2,325
United States	(Sep-Aug)	7,708	10,342	8,255	995	1,520	953	34,817	40,687	40,415
South America		39,301	39,994	44,070	7,091	6,300	6,918	39,475	47,242	50,442
Argentina	(Oct-Sep)	24,025	25,380	29,550	4,704	4,400	5,250	5,590	11,500	13,500
Brazil	(Oct-Sep)	13,109	12,500	12,450	1,910	1,435	1,215	29,986	28,450	30,400
Paraguay	(Mar-Feb)	1,167	1,064	1,060	243	250	252	2,637	5,400	4,835
South Asia		3,811	2,751	3,201	2	2	2	0	55	55
India	(Oct-Sep)	3,808	2,750	3,200	2	2	2	55	55	55
Other		1,909	2,062	1,998	995	1,116	1,132	944	656	1,281
<b>World Total</b>		<b>52,817</b>	<b>55,280</b>	<b>57,661</b>	<b>9,122</b>	<b>8,985</b>	<b>9,057</b>	<b>77,253</b>	<b>90,840</b>	<b>94,518</b>
<b>Imports</b>										
European Union		0	21,800	23,050	0	550	550	0	12,900	13,000
East Asia		3,963	3,875	4,005	332	2,043	2,448	1,167	57,345	62,415
China	(Oct-Sep)	215	65	150	2,494	1,600	2,000	41,098	50,000	55,000
Japan	(Oct-Sep)	1,812	1,950	1,930	39	35	40	3,396	3,600	3,660
Korea, South	(Oct-Sep)	1,813	1,790	1,850	266	300	300	1,167	1,200	1,210
Taiwan	(Oct-Sep)	113	10	20	11	5	5	2,216	2,500	2,500
Southeast Asia		9,270	10,052	10,567	271	323	340	3,672	3,940	4,330
Indonesia	(Oct-Sep)	2,339	2,450	2,600	13	16	17	1,393	1,500	1,600
Malaysia	(Oct-Sep)	934	980	1,020	96	128	135	530	580	610
Philippines	(Jan-Dec)	1,295	1,350	1,375	2	5	4	35	50	50
Thailand	(Sep-Aug)	2,160	2,450	2,550	0	1	0	1,510	1,590	1,830
Vietnam	(Jan-Dec)	2,521	2,800	3,000	122	135	146	184	200	220
North America		2,849	2,777	2,920	245	280	312	4,074	4,234	4,222
Canada	(Aug-Jul)	1,251	1,200	1,150	45	40	35	386	376	350
Mexico	(Sep-Aug)	1,518	1,450	1,620	159	190	225	3,327	3,450	3,600
South America		3,924	4,257	4,482	893	961	976	1,759	846	853
Brazil	(Oct-Sep)	83	100	120	5	50	50	44	185	175
Colombia	(Oct-Sep)	825	875	900	164	175	180	290	263	264
Central America		778	831	888	151	157	174	0	236	236
Caribbean		0	790	815	283	310	294	25	185	190
Middle East		30	3,540	3,795	405	442	433	2,737	3,720	3,720
Iran	(Oct-Sep)	1,044	1,170	1,220	260	300	300	783	1,070	1,070
Israel	(Oct-Sep)	84	80	80	10	10	10	326	450	450
Syria	(Jan-Dec)	706	680	725	5	7	7	559	525	550
Turkey	(Nov-Oct)	399	250	350	10	12	10	1,007	1,450	1,400
North Africa		1,605	1,745	1,570	1,156	1,145	1,155	1,961	2,023	2,075
Egypt	(Oct-Sep)	279	250	230	320	250	250	1,575	1,623	1,650
Other		28,765	3,544	3,542	5,220	2,488	2,177	61,773	1,703	1,899
<b>World Total</b>		<b>51,184</b>	<b>53,211</b>	<b>55,634</b>	<b>8,956</b>	<b>8,699</b>	<b>8,859</b>	<b>77,168</b>	<b>87,132</b>	<b>92,940</b>

**Table 11: Palm Oil: World Supply and Distribution**

Thousand Metric Tons

	2006/07	2007/08	2008/09	2009/10	Aug 2010/11	Sep 2010/11
<b>Production</b>						
Indonesia	16,600	18,000	20,500	21,000	24,500	23,000
Malaysia	15,290	17,567	17,259	18,000	18,600	18,600
Thailand	1,170	1,050	1,540	1,345	1,500	1,500
Nigeria	810	820	850	850	850	850
Colombia	770	830	780	770	810	820
Other	2,608	2,680	2,933	3,037	3,077	3,067
<b>Total</b>	<b>37,248</b>	<b>40,947</b>	<b>43,862</b>	<b>45,002</b>	<b>49,337</b>	<b>47,837</b>
<b>Imports</b>						
China	5,139	5,223	6,118	6,350	7,150	7,150
India	3,650	5,015	6,867	6,400	7,500	7,000
EU-27	4,332	4,960	5,379	5,100	5,400	5,400
Pakistan	1,618	2,219	1,949	2,200	2,300	2,300
Malaysia	403	669	1,047	1,250	1,100	1,250
United States	702	952	1,036	952	952	975
Bangladesh	898	724	700	900	900	900
Egypt	768	571	960	850	850	850
Iran	419	610	550	600	620	620
Vietnam	445	504	502	550	595	595
Other	8,366	9,337	8,954	9,570	9,935	9,985
<b>Total</b>	<b>26,740</b>	<b>30,784</b>	<b>34,062</b>	<b>34,722</b>	<b>37,302</b>	<b>37,025</b>
<b>Exports</b>						
Indonesia	11,419	13,969	15,964	16,700	18,955	18,075
Malaysia	12,900	14,644	15,485	15,530	15,900	16,100
Benin	273	358	348	450	357	480
Papua New Guinea	357	389	440	435	426	426
United Arab Emirates	334	336	228	260	265	265
Other	2,255	2,495	2,117	2,102	2,159	2,159
<b>Total</b>	<b>27,538</b>	<b>32,191</b>	<b>34,582</b>	<b>35,477</b>	<b>38,062</b>	<b>37,505</b>
<b>Domestic Consumption</b>						
India	3,671	5,065	6,475	6,750	7,550	7,150
China	5,138	5,222	5,618	6,320	7,197	7,127
EU-27	4,256	4,761	4,993	5,024	5,388	5,388
Indonesia	4,171	4,653	4,677	4,685	4,955	4,935
Malaysia	3,109	3,170	3,229	3,697	3,650	3,800
Pakistan	1,661	2,027	1,995	2,130	2,250	2,250
Thailand	742	873	1,230	1,381	1,400	1,400
Nigeria	1,155	1,190	1,208	1,232	1,240	1,240
United States	663	948	959	968	936	959
Bangladesh	880	796	700	880	880	880
Egypt	595	560	660	760	815	815
Colombia	483	531	590	645	642	662
Iran	400	538	639	599	619	619
Japan	521	551	531	570	580	580
Vietnam	415	516	500	540	580	580
Other	8,018	8,350	8,427	8,815	9,264	9,218
<b>Total</b>	<b>35,878</b>	<b>39,751</b>	<b>42,431</b>	<b>44,996</b>	<b>47,946</b>	<b>47,603</b>
<b>Ending Stocks</b>						
Malaysia	1,565	1,987	1,579	1,602	1,552	1,552
Indonesia	1,715	1,100	980	625	1,324	650
China	0	0	499	528	550	550
EU-27	129	190	444	410	272	272
Togo	131	142	145	157	174	174
Other	1,185	1,095	1,778	1,354	1,384	1,232
<b>Total</b>	<b>4,725</b>	<b>4,514</b>	<b>5,425</b>	<b>4,676</b>	<b>5,256</b>	<b>4,430</b>

**Table 12: Rapeseed and Products: World Supply and Distribution**  
**Thousand Metric Tons**

Marketing Year	Meal, Rapeseed			Oil, Rapeseed			Oilseed, Rapeseed			
	2008/09	2009/10	2010/11	2008/09	2009/10	2010/11	2008/09	2009/10	2010/11	
<b>Production</b>										
China	(Oct-Sep)	8,325	9,135	8,990	4,700	5,158	5,077	12,100	13,700	12,800
India	(Oct-Sep)	3,260	3,525	3,588	2,058	2,230	2,265	6,700	6,400	7,000
Canada	(Aug-Jul)	2,490	2,775	3,010	1,770	1,975	2,140	12,643	11,825	11,000
Japan	(Oct-Sep)	1,249	1,295	1,244	884	916	880	1	1	1
EU-27	(Jul-Jun)	11,744	12,982	12,560	8,472	9,370	9,070	19,080	21,446	20,000
Other		3,733	3,884	3,703	2,569	2,657	2,537	7,399	6,553	6,338
<b>World Total</b>		<b>30,801</b>	<b>33,596</b>	<b>33,095</b>	<b>20,453</b>	<b>22,306</b>	<b>21,969</b>	<b>57,923</b>	<b>59,925</b>	<b>57,139</b>
<b>Imports</b>										
China	(Oct-Sep)	260	800	450	453	650	600	3,034	2,100	1,500
India	(Oct-Sep)	0	0	0	42	23	23	20	20	20
Canada	(Aug-Jul)	6	5	5	111	165	140	121	130	270
Japan	(Oct-Sep)	114	70	110	20	15	25	2,123	2,300	2,200
EU-27	(Jul-Jun)	171	150	100	454	450	450	3,342	2,100	2,050
Other		2,979	2,508	3,063	1,363	1,452	1,514	3,485	3,640	3,436
<b>World Total</b>		<b>3,530</b>	<b>3,533</b>	<b>3,728</b>	<b>2,443</b>	<b>2,755</b>	<b>2,752</b>	<b>12,125</b>	<b>10,290</b>	<b>9,476</b>
<b>Exports</b>										
China	(Oct-Sep)	268	250	250	9	10	10	0	0	0
India	(Oct-Sep)	774	750	750	1	1	1	4	5	5
Canada	(Aug-Jul)	1,861	1,920	2,180	1,527	1,700	1,790	7,898	7,050	6,000
Japan	(Oct-Sep)	5	0	0	0	0	0	0	0	0
EU-27	(Jul-Jun)	162	200	150	142	120	100	98	140	100
Other		479	390	444	737	738	660	4,017	3,482	3,288
<b>World Total</b>		<b>3,549</b>	<b>3,510</b>	<b>3,774</b>	<b>2,416</b>	<b>2,569</b>	<b>2,561</b>	<b>12,017</b>	<b>10,677</b>	<b>9,393</b>
<b>Domestic Consumption</b>										
China	(Oct-Sep)	8,317	9,685	9,190	4,853	5,468	5,682	13,740	15,080	14,850
India	(Oct-Sep)	2,475	2,775	2,838	2,095	2,252	2,287	6,140	6,661	6,795
Canada	(Aug-Jul)	630	820	860	395	430	461	4,667	5,266	5,520
Japan	(Oct-Sep)	1,354	1,361	1,359	919	920	912	2,205	2,285	2,196
EU-27	(Jul-Jun)	11,759	12,944	12,500	8,679	9,665	9,545	21,374	23,534	22,680
Other		6,264	6,015	6,323	3,184	3,396	3,414	6,695	6,836	6,610
<b>World Total</b>		<b>30,799</b>	<b>33,600</b>	<b>33,070</b>	<b>20,125</b>	<b>22,131</b>	<b>22,301</b>	<b>54,821</b>	<b>59,662</b>	<b>58,651</b>
<b>Ending Stocks</b>										
China	(Oct-Sep)	0	0	0	291	621	606	1,394	2,114	1,564
India	(Oct-Sep)	21	21	21	4	4	4	676	430	650
Canada	(Aug-Jul)	21	61	36	18	28	57	1,661	1,300	1,050
Japan	(Oct-Sep)	16	20	15	16	27	20	59	75	80
EU-27	(Jul-Jun)	95	83	93	274	309	184	1,911	1,783	1,053
Other		82	69	68	224	199	176	1,054	929	805
<b>World Total</b>		<b>235</b>	<b>254</b>	<b>233</b>	<b>827</b>	<b>1,188</b>	<b>1,047</b>	<b>6,755</b>	<b>6,631</b>	<b>5,202</b>

9/10/2010 8:46:26 AM

**Table 13: Sunflowerseed and Products World Supply and Distribution**  
**Thousand Metric Tons**

Marketing Year	Oilseed, Sunflowerseed			Meal, Sunflowerseed			Oil, Sunflowerseed			
	2008/09	2009/10	2010/11	2008/09	2009/10	2010/11	2008/09	2009/10	2010/11	
<b>Production</b>										
Argentina	(Mar-Feb)	2,440	2,300	3,400	1,391	1,060	1,485	1,342	1,035	1,450
Russia	(Sep-Aug)	7,350	6,425	6,500	2,306	2,253	2,165	2,565	2,505	2,410
Turkey	(Sep-Aug)	830	800	875	460	559	495	515	626	554
Ukraine	(Sep-Aug)	7,000	6,500	6,000	2,594	2,565	2,420	2,632	2,603	2,453
EU-27	(Oct-Sep)	7,134	6,933	6,800	3,210	3,346	3,246	2,335	2,435	2,360
Other		8,524	7,426	7,930	2,822	2,563	2,665	2,483	2,261	2,333
<b>World Total</b>		<b>33,278</b>	<b>30,384</b>	<b>31,505</b>	<b>12,783</b>	<b>12,346</b>	<b>12,476</b>	<b>11,872</b>	<b>11,465</b>	<b>11,560</b>
<b>Imports</b>										
Argentina	(Mar-Feb)	128	70	100	0	0	0	0	0	0
Russia	(Sep-Aug)	12	20	10	0	2	0	37	50	50
Turkey	(Sep-Aug)	446	740	400	312	425	300	432	200	300
Ukraine	(Sep-Aug)	6	7	5	0	0	0	0	0	0
EU-27	(Oct-Sep)	616	320	250	2,483	2,350	2,400	1,007	970	1,030
Other		581	572	537	1,114	1,281	1,377	2,495	2,677	2,579
<b>World Total</b>		<b>1,789</b>	<b>1,729</b>	<b>1,302</b>	<b>3,909</b>	<b>4,058</b>	<b>4,077</b>	<b>3,971</b>	<b>3,897</b>	<b>3,959</b>
<b>Exports</b>										
Argentina	(Mar-Feb)	74	67	65	720	645	785	853	860	1,050
Russia	(Sep-Aug)	160	25	80	965	800	900	802	580	480
Turkey	(Sep-Aug)	13	20	10	6	5	5	131	60	60
Ukraine	(Sep-Aug)	767	360	150	2,209	2,380	2,220	2,098	2,410	2,125
EU-27	(Oct-Sep)	455	670	450	80	90	100	143	140	130
Other		682	645	676	321	309	316	561	538	535
<b>World Total</b>		<b>2,151</b>	<b>1,787</b>	<b>1,431</b>	<b>4,301</b>	<b>4,229</b>	<b>4,326</b>	<b>4,588</b>	<b>4,588</b>	<b>4,380</b>
<b>Domestic Consumption</b>										
Argentina	(Mar-Feb)	3,367	2,550	3,580	630	550	610	378	387	392
Russia	(Sep-Aug)	6,917	6,720	6,480	1,329	1,357	1,350	1,918	1,991	1,970
Turkey	(Sep-Aug)	1,216	1,477	1,307	766	979	790	794	827	800
Ukraine	(Sep-Aug)	6,285	6,175	5,850	386	187	196	395	385	362
EU-27	(Oct-Sep)	6,775	7,000	6,670	5,386	5,764	5,550	3,158	3,234	3,303
Other		8,193	7,529	7,839	3,597	3,544	3,723	4,030	4,516	4,439
<b>World Total</b>		<b>32,753</b>	<b>31,451</b>	<b>31,726</b>	<b>12,094</b>	<b>12,381</b>	<b>12,219</b>	<b>10,673</b>	<b>11,340</b>	<b>11,266</b>
<b>Ending Stocks</b>										
Argentina	(Mar-Feb)	812	565	420	205	70	160	324	112	120
Russia	(Sep-Aug)	575	275	225	16	114	29	59	43	53
Turkey	(Sep-Aug)	94	137	95	0	0	0	108	47	41
Ukraine	(Sep-Aug)	29	1	6	4	2	6	248	56	22
EU-27	(Oct-Sep)	759	342	272	296	138	134	242	273	230
Other		521	345	297	58	49	52	465	349	287
<b>World Total</b>		<b>2,790</b>	<b>1,665</b>	<b>1,315</b>	<b>579</b>	<b>373</b>	<b>381</b>	<b>1,446</b>	<b>880</b>	<b>753</b>

**Table 14: Minor Vegetable Oil Supply and Distribution**  
**Thousand Metric Tons**

Marketing Year	Oil, Peanut			Oil, Cottonseed			Oil, Olive			
	2008/09	2009/10	2010/11	2008/09	2009/10	2010/11	2008/09	2009/10	2010/11	
<b>Production</b>										
China	(Oct-Sep)	2,174	2,179	2,184	1,600	1,466	1,466	nr	nr	nr
India	(Oct-Sep)	1,545	1,230	1,585	1,030	1,045	1,150	nr	nr	nr
Turkey	(Nov-Oct)	4	4	4	116	100	105	175	175	175
United States	(Aug-Jul)	65	63	67	303	288	376	2	3	4
EU-27	(Oct-Sep)	16	16	16	47	58	60	2,250	2,250	2,250
Other		1,199	1,163	1,160	1,720	1,715	1,835	522	482	512
<b>World Total</b>		<b>5,003</b>	<b>4,655</b>	<b>5,016</b>	<b>4,816</b>	<b>4,672</b>	<b>4,992</b>	<b>2,949</b>	<b>2,910</b>	<b>2,941</b>
<b>Imports</b>										
China	(Oct-Sep)	20	50	30	0	0	0	nr	nr	nr
India	(Oct-Sep)	0	0	0	5	0	0	nr	nr	nr
Turkey	(Nov-Oct)	0	0	0	7	4	5	0	0	0
United States	(Aug-Jul)	24	33	34	0	0	0	276	268	277
EU-27	(Oct-Sep)	76	76	75	3	3	3	103	105	130
Other		24	22	22	60	55	53	191	198	202
<b>World Total</b>		<b>144</b>	<b>181</b>	<b>161</b>	<b>75</b>	<b>62</b>	<b>61</b>	<b>570</b>	<b>571</b>	<b>609</b>
<b>Exports</b>										
China	(Oct-Sep)	10	10	10	5	3	3	nr	nr	nr
India	(Oct-Sep)	0	0	0	0	0	0	nr	nr	nr
Turkey	(Nov-Oct)	0	0	0	2	1	1	30	40	40
United States	(Aug-Jul)	4	5	4	87	48	68	3	3	3
EU-27	(Oct-Sep)	3	2	2	2	1	1	418	443	410
Other		172	141	136	73	58	74	192	148	188
<b>World Total</b>		<b>189</b>	<b>158</b>	<b>152</b>	<b>169</b>	<b>111</b>	<b>147</b>	<b>643</b>	<b>634</b>	<b>641</b>
<b>Domestic Consumption</b>										
China	(Oct-Sep)	2,184	2,219	2,204	1,595	1,463	1,463	nr	nr	nr
India	(Oct-Sep)	1,455	1,385	1,495	1,038	1,049	1,141	nr	nr	nr
Turkey	(Nov-Oct)	4	4	4	140	103	109	135	150	150
United States	(Aug-Jul)	88	90	97	227	245	313	275	268	278
EU-27	(Oct-Sep)	89	90	89	47	62	62	2,070	2,070	2,050
Other		1,044	1,044	1,045	1,737	1,712	1,819	511	522	527
<b>World Total</b>		<b>4,864</b>	<b>4,832</b>	<b>4,934</b>	<b>4,784</b>	<b>4,634</b>	<b>4,907</b>	<b>2,991</b>	<b>3,010</b>	<b>3,005</b>
<b>Ending Stocks</b>										
China	(Oct-Sep)	0	0	0	0	0	0	nr	nr	nr
India	(Oct-Sep)	165	10	100	60	56	65	nr	nr	nr
Turkey	(Nov-Oct)	0	0	0	0	0	0	55	40	25
United States	(Aug-Jul)	8	9	9	55	50	45	0	0	0
EU-27	(Oct-Sep)	5	5	5	3	1	1	668	510	430
Other		52	52	53	60	60	55	93	103	102
<b>World Total</b>		<b>230</b>	<b>76</b>	<b>167</b>	<b>178</b>	<b>167</b>	<b>166</b>	<b>816</b>	<b>653</b>	<b>557</b>



**Table 15: World Oilseeds and Products Supply and Distribution**

Million Metric Tons

	Area Harvested	Beginning Stocks	Production	Imports	Total Supply	Exports	Food Use Dom.	Domestic Consumpti	Ending Stocks
<b>Major Oilseeds</b>									
1997/98	177.25	20.98	286.75	48.00	355.72	49.26	22.21	275.17	31.30
1998/99	184.76	31.30	294.57	51.88	377.75	51.09	24.48	292.00	34.66
1999/00	188.49	34.66	304.26	59.20	398.13	59.43	25.51	300.13	38.57
2000/01	188.60	38.57	313.96	65.59	418.12	67.00	26.80	311.00	40.12
2001/02	188.55	40.12	324.83	63.67	428.62	62.30	27.52	323.95	42.37
2002/03	187.18	42.37	331.62	71.05	445.04	69.70	27.69	326.50	48.84
2003/04	199.52	48.84	335.84	64.07	448.75	66.77	27.86	336.93	45.06
2004/05	209.36	45.06	381.37	72.66	499.08	74.37	29.23	366.84	57.87
2005/06	210.89	57.87	391.38	75.42	524.66	75.78	29.77	384.53	64.35
2006/07	211.07	64.35	404.45	80.84	549.64	83.28	30.39	392.91	73.45
2007/08	206.26	73.45	392.01	89.96	555.42	92.67	30.59	401.10	61.66
2008/09	215.33	61.66	396.44	93.67	551.77	94.48	31.89	400.81	56.48
2009/10	215.15	56.48	440.38	101.82	598.68	106.29	32.73	418.59	73.80
2010/11	210.79	73.80	440.62	106.36	620.79	108.68	33.31	438.98	73.12
<b>Major Protein Meals</b>									
1997/98	nr	6.86	153.19	45.53	205.59	44.33	0.35	153.46	7.81
1998/99	nr	7.81	163.33	47.05	218.18	47.21	0.40	162.58	8.39
1999/00	nr	8.36	167.69	47.28	223.33	46.73	0.39	168.84	7.76
2000/01	nr	7.76	174.72	48.07	230.54	48.44	0.41	175.07	7.04
2001/02	nr	7.04	182.66	51.39	241.08	52.88	0.42	180.83	7.38
2002/03	nr	7.38	185.98	53.62	246.98	53.99	0.43	186.20	6.79
2003/04	nr	6.79	190.73	57.79	255.30	58.85	0.45	189.15	7.31
2004/05	nr	7.31	206.61	59.34	273.25	61.72	0.48	204.39	7.14
2005/06	nr	7.14	217.19	65.09	289.42	66.44	0.50	215.26	7.72
2006/07	nr	7.72	224.07	66.60	298.39	68.91	0.50	221.71	7.76
2007/08	nr	7.76	231.28	68.89	307.93	71.83	0.54	228.29	7.81
2008/09	nr	7.81	228.55	66.78	303.14	69.27	0.58	227.95	5.92
2009/10	nr	5.92	242.14	69.00	317.06	71.76	0.63	239.17	6.13
2010/11	nr	6.13	254.51	72.10	332.74	75.06	0.67	251.27	6.41
<b>Major Vegetable Oils</b>									
1997/98	7.69	7.22	75.22	24.68	107.12	26.30	66.31	73.74	7.08
1998/99	7.95	7.08	80.37	26.89	114.34	27.81	70.72	78.56	7.97
1999/00	8.33	7.82	86.04	26.57	120.42	28.77	74.59	82.68	8.98
2000/01	10.23	8.98	89.83	30.24	129.05	30.94	78.79	88.66	9.45
2001/02	10.50	9.45	92.77	30.93	133.15	33.07	80.35	90.99	9.09
2002/03	4.58	9.09	96.16	35.00	140.25	36.19	83.28	95.37	8.69
2003/04	4.42	8.69	102.86	37.71	149.25	39.30	86.93	100.59	9.36
2004/05	8.12	9.36	111.64	40.86	161.86	42.82	91.53	108.17	10.87
2005/06	8.22	10.87	118.85	44.59	174.31	47.87	94.48	114.95	11.49
2006/07	8.29	11.49	121.55	47.04	180.08	49.08	95.57	119.30	11.71
2007/08	8.53	11.71	128.22	50.90	190.83	53.67	99.74	125.87	11.28
2008/09	8.63	11.28	133.36	54.20	198.84	55.81	103.05	130.02	13.02
2009/10	8.73	13.02	138.47	55.35	206.83	57.72	108.58	137.75	11.37
2010/11	7.39	11.37	144.76	57.94	214.06	59.63	113.08	144.13	10.31

Based on the aggregate of different marketing years

**Table 16: World: Soybeans and Products Supply and Distribution**

Million Metric Tons

	Area Harvested	Beginning Stocks	Production	Imports	Total Supply	Exports	Crush	Domestic Consumpti	Ending Stocks
<b>Oilseed, Soybean</b>									
1997/98	68.53	15.83	157.95	38.16	211.94	39.31	123.21	145.06	27.57
1998/99	71.30	27.57	159.83	38.55	225.95	37.93	134.64	158.77	29.25
1999/00	71.91	29.25	160.35	45.57	235.17	45.63	135.00	159.22	30.32
2000/01	75.44	30.32	175.76	53.05	259.13	53.82	146.55	171.51	33.81
2001/02	79.47	33.81	184.82	54.39	273.01	52.90	158.01	184.45	35.66
2002/03	82.31	35.66	196.87	62.91	295.44	60.98	165.59	191.49	42.98
2003/04	88.41	42.98	186.64	54.00	283.61	56.02	164.01	189.43	38.17
2004/05	93.18	38.17	215.78	63.47	317.42	64.75	175.36	204.41	48.26
2005/06	92.92	48.26	220.67	64.13	333.06	63.80	186.14	216.05	53.21
2006/07	94.26	53.21	237.13	69.07	359.40	71.32	195.48	224.93	63.16
2007/08	90.67	63.16	221.01	78.12	362.28	79.59	202.05	229.80	52.89
2008/09	96.40	52.89	211.96	77.17	342.02	77.25	192.71	220.79	43.97
2009/10	101.96	43.97	259.89	87.13	391.00	90.84	207.92	237.31	62.85
2010/11	101.92	62.85	254.89	92.94	410.68	94.52	221.19	252.56	63.61
<b>Meal, Soybean</b>									
1997/98	nr	4.79	97.96	34.03	136.78	32.63	123.35	98.44	5.71
1998/99	nr	5.71	106.35	35.78	147.83	35.38	134.69	106.02	6.43
1999/00	nr	6.43	106.99	34.92	148.34	34.19	135.03	108.41	5.74
2000/01	nr	5.74	116.08	35.94	157.76	36.26	146.58	115.94	5.56
2001/02	nr	5.56	125.03	40.41	171.00	41.81	158.12	123.53	5.67
2002/03	nr	5.67	130.58	42.47	178.71	43.00	165.59	130.07	5.65
2003/04	nr	5.65	128.87	44.89	179.41	45.82	164.02	127.56	6.03
2004/05	nr	6.03	138.64	45.92	190.58	48.13	175.37	136.55	5.90
2005/06	nr	5.90	146.55	51.17	203.61	52.38	186.16	145.27	5.96
2006/07	nr	5.96	153.77	52.55	212.28	54.62	195.54	151.28	6.38
2007/08	nr	6.38	158.54	54.07	218.99	56.16	202.09	156.47	6.36
2008/09	nr	6.36	151.43	51.18	208.98	52.82	192.90	151.94	4.23
2009/10	nr	4.23	163.76	53.21	221.19	55.28	208.16	161.04	4.87
2010/11	nr	4.87	174.29	55.63	234.79	57.66	221.62	171.94	5.19
<b>Oil, Soybean</b>									
1997/98	nr	2.64	22.41	6.22	31.27	6.41	123.22	22.16	2.71
1998/99	nr	2.71	24.43	7.22	34.37	7.50	134.67	24.39	2.47
1999/00	nr	2.47	24.49	6.06	33.02	6.23	135.04	23.91	2.88
2000/01	nr	2.88	26.74	6.89	36.51	7.06	146.58	26.36	3.09
2001/02	nr	3.09	28.91	7.67	39.67	8.35	158.11	28.17	3.15
2002/03	nr	3.15	30.57	8.27	41.99	9.03	165.59	30.18	2.78
2003/04	nr	2.78	30.25	8.39	41.42	8.79	164.01	30.16	2.47
2004/05	nr	2.47	32.54	8.88	43.90	9.17	175.36	31.73	3.00
2005/06	nr	3.00	34.78	9.09	46.88	9.84	186.14	33.63	3.40
2006/07	nr	3.40	36.33	9.92	49.64	10.56	195.52	35.39	3.70
2007/08	nr	3.70	37.57	10.50	51.76	10.89	202.07	37.76	3.11
2008/09	nr	3.11	35.70	8.96	47.76	9.12	192.88	35.91	2.73
2009/10	nr	2.73	38.44	8.70	49.87	8.99	208.14	38.09	2.79
2010/11	nr	2.79	41.10	8.86	52.75	9.06	221.60	41.31	2.38

Based on the aggregate of different marketing years, primarily October through September.

**Table 17: World: Rapeseed and Products Supply and Distribution**

Million Metric Tons

	Area Harvested	Beginning Stocks	Production	Imports	Total Supply	Exports	Food Use Dom.	Domestic Consumpti	Ending Stocks
<b>Oilseed, Rapeseed</b>									
1997/98	23.50	2.04	33.12	4.30	39.46	4.26	0.36	34.13	1.07
1998/99	25.41	1.07	35.76	7.04	43.86	6.84	0.28	34.79	2.23
1999/00	26.75	2.23	42.48	8.20	52.92	8.21	0.39	40.46	4.25
2000/01	24.69	4.25	37.33	6.99	48.57	7.18	0.38	38.70	2.69
2001/02	23.29	2.69	36.01	4.95	43.65	4.90	0.44	35.98	2.78
2002/03	22.10	2.78	33.26	4.03	40.07	4.13	0.38	33.77	2.17
2003/04	25.47	2.17	39.43	5.15	46.75	5.49	0.62	39.16	2.10
2004/05	26.68	2.10	46.09	5.02	53.20	4.90	0.63	43.56	4.75
2005/06	27.26	4.75	48.51	6.68	59.94	6.98	0.30	47.45	5.51
2006/07	26.48	5.51	45.09	7.01	57.61	6.62	0.53	46.33	4.66
2007/08	28.28	4.66	48.51	7.56	60.73	8.12	0.46	49.07	3.55
2008/09	31.09	3.55	57.92	12.13	73.59	12.02	0.48	54.82	6.76
2009/10	30.75	6.76	59.93	10.29	76.97	10.68	0.53	59.66	6.63
2010/11	31.80	6.63	57.14	9.48	73.25	9.39	0.55	58.65	5.20
<b>Meal, Rapeseed</b>									
1997/98	nr	0.51	18.85	2.82	22.19	2.86	0.00	18.88	0.44
1998/99	nr	0.44	19.23	2.12	21.79	2.04	0.00	19.38	0.37
1999/00	nr	0.34	22.08	2.26	24.68	2.32	0.00	21.98	0.38
2000/01	nr	0.38	21.16	1.92	23.47	1.83	0.00	21.34	0.29
2001/02	nr	0.29	19.94	1.54	21.76	1.51	0.00	19.95	0.30
2002/03	nr	0.30	18.80	1.73	20.83	1.62	0.00	18.93	0.28
2003/04	nr	0.28	21.78	2.49	24.55	2.49	0.00	21.61	0.45
2004/05	nr	0.45	24.22	2.30	26.97	2.24	0.00	24.38	0.35
2005/06	nr	0.35	26.55	2.55	29.44	2.51	0.00	26.35	0.59
2006/07	nr	0.59	25.91	3.05	29.55	2.96	0.00	26.35	0.25
2007/08	nr	0.25	27.64	3.56	31.44	3.69	0.00	27.51	0.25
2008/09	nr	0.25	30.80	3.53	34.58	3.55	0.00	30.80	0.24
2009/10	nr	0.24	33.60	3.53	37.36	3.51	0.00	33.60	0.25
2010/11	nr	0.25	33.10	3.73	37.08	3.77	0.00	33.07	0.23
<b>Oil, Rapeseed</b>									
1997/98	nr	0.39	11.46	2.02	13.86	2.00	10.42	11.41	0.46
1998/99	nr	0.46	11.85	1.64	13.94	1.81	10.75	11.64	0.49
1999/00	nr	0.45	14.00	1.73	16.18	1.73	13.04	13.77	0.69
2000/01	nr	0.69	13.36	1.34	15.39	1.20	12.25	13.42	0.77
2001/02	nr	0.77	13.08	1.12	14.97	1.03	12.09	13.27	0.67
2002/03	nr	0.67	12.26	0.89	13.83	0.91	11.02	12.36	0.56
2003/04	nr	0.56	14.11	1.36	16.02	1.33	12.42	14.30	0.40
2004/05	nr	0.40	15.73	1.20	17.33	1.29	12.86	15.54	0.49
2005/06	nr	0.49	17.34	1.47	19.30	1.65	13.12	16.97	0.68
2006/07	nr	0.68	17.12	2.20	20.00	2.03	12.62	17.52	0.45
2007/08	nr	0.45	18.39	2.02	20.86	1.91	13.39	18.47	0.47
2008/09	nr	0.47	20.45	2.44	23.37	2.42	14.04	20.13	0.83
2009/10	nr	0.83	22.31	2.76	25.89	2.57	15.40	22.13	1.19
2010/11	nr	1.19	21.97	2.75	25.91	2.56	15.54	22.30	1.05

Based on the aggregate of different marketing years.

**Table 18: World: Sunflower and Products Supply and Distribution**

Million Metric Tons

	Area Harvested	Beginning Stocks	Production	Imports	Exports	Domestic Consumpti	Ending Stocks
<b>Oilseed, Sunflowerseed</b>							
1997/98	19.15	1.43	23.30	3.17	3.02	24.08	0.81
1998/99	21.46	0.81	26.65	3.76	3.69	26.17	1.35
1999/00	23.06	1.35	27.18	2.07	2.16	26.35	2.08
2000/01	19.92	2.08	23.08	2.23	2.52	23.31	1.56
2001/02	18.83	1.56	21.41	1.11	1.19	21.38	1.51
2002/03	20.21	1.51	23.91	1.37	1.52	23.28	1.99
2003/04	22.98	1.99	26.88	2.19	2.27	26.08	2.71
2004/05	20.87	2.71	25.28	1.13	1.23	25.66	2.24
2005/06	22.76	2.24	29.93	1.38	1.52	29.53	2.51
2006/07	23.36	2.51	29.74	1.76	1.90	29.30	2.81
2007/08	21.11	2.81	27.20	1.25	1.48	27.15	2.63
2008/09	23.68	2.63	33.28	1.79	2.15	32.75	2.79
2009/10	22.24	2.79	30.38	1.73	1.79	31.45	1.67
2010/11	23.85	1.67	31.51	1.30	1.43	31.73	1.32
<b>Meal, Sunflowerseed</b>							
1997/98	nr	0.28	9.81	2.32	2.40	9.64	0.36
1998/99	nr	0.36	10.54	2.57	2.85	10.23	0.39
1999/00	nr	0.39	10.57	2.54	2.34	10.75	0.40
2000/01	nr	0.40	9.32	2.23	2.00	9.63	0.32
2001/02	nr	0.32	8.34	1.91	2.11	8.22	0.24
2002/03	nr	0.24	8.99	2.20	2.32	8.95	0.17
2003/04	nr	0.17	10.22	2.66	2.86	9.97	0.21
2004/05	nr	0.21	9.96	2.55	2.77	9.77	0.18
2005/06	nr	0.18	11.49	3.31	3.55	11.16	0.26
2006/07	nr	0.26	11.48	3.35	3.49	11.39	0.21
2007/08	nr	0.21	10.60	2.78	3.28	10.03	0.28
2008/09	nr	0.28	12.78	3.91	4.30	12.09	0.58
2009/10	nr	0.58	12.35	4.06	4.23	12.38	0.37
2010/11	nr	0.37	12.48	4.08	4.33	12.22	0.38
<b>Oil, Sunflowerseed</b>							
1997/98	nr	0.76	8.48	2.68	3.06	8.21	0.64
1998/99	nr	0.64	9.27	2.95	3.14	8.83	0.89
1999/00	nr	0.85	9.28	2.45	2.90	8.74	0.93
2000/01	nr	0.93	8.18	2.01	2.24	8.18	0.70
2001/02	nr	0.70	7.44	1.76	1.92	7.50	0.48
2002/03	nr	0.48	8.12	2.00	2.28	7.82	0.50
2003/04	nr	0.50	9.19	1.95	2.68	8.39	0.58
2004/05	nr	0.58	9.14	2.16	2.57	8.50	0.80
2005/06	nr	0.80	10.57	3.30	3.91	9.81	0.97
2006/07	nr	0.97	10.60	3.33	4.04	10.19	0.66
2007/08	nr	0.66	9.92	2.73	3.48	8.97	0.86
2008/09	nr	0.86	11.87	3.97	4.59	10.67	1.45
2009/10	nr	1.45	11.47	3.90	4.59	11.34	0.88
2010/11	nr	0.88	11.56	3.96	4.38	11.27	0.75

Based on the aggregate of different marketing years, primarily September through August.

**Table 19: World: Palm Oil, Coconut Oil, and Fish Meal Supply and Distribution**

Million Metric Tons

	Beginning Stocks	Production	Imports	Total Supply	Exports	Industrial Dom.	Food Use Dom.	Domestic Consumpti	Ending Stocks
<b>Oil, Palm</b>									
1997/98	1.91	16.92	10.37	29.19	10.82	2.69	13.82	16.73	1.65
1998/99	1.65	19.20	12.01	32.86	12.36	2.81	14.89	17.92	2.57
1999/00	2.53	21.80	13.13	37.46	14.04	2.80	17.40	20.50	2.92
2000/01	2.92	24.30	16.28	43.50	16.47	3.29	20.28	24.07	2.96
2001/02	2.96	25.30	16.51	44.77	17.65	3.69	20.10	24.36	2.76
2002/03	2.76	27.66	19.70	50.12	19.96	4.70	21.98	27.27	2.90
2003/04	2.90	30.02	21.93	54.85	22.12	5.44	23.06	29.09	3.63
2004/05	3.63	33.47	24.31	61.41	25.03	6.78	24.95	32.42	3.97
2005/06	3.97	35.76	26.23	65.96	27.59	7.72	25.82	34.22	4.15
2006/07	4.15	37.25	26.74	68.14	27.54	8.54	26.67	35.88	4.73
2007/08	4.73	40.95	30.78	76.46	32.19	9.19	29.85	39.75	4.51
2008/09	4.51	43.86	34.06	82.44	34.58	9.20	32.45	42.43	5.43
2009/10	5.43	45.00	34.72	85.15	35.48	9.68	34.45	45.00	4.68
2010/11	4.68	47.84	37.03	89.54	37.51	10.18	36.50	47.60	4.43
<b>Oil, Coconut</b>									
1997/98	0.39	3.37	1.73	5.49	2.06	1.07	1.88	3.12	0.31
1998/99	0.31	2.72	1.21	4.24	1.11	1.00	1.75	2.91	0.22
1999/00	0.19	3.37	1.48	5.03	1.96	1.09	1.69	2.90	0.17
2000/01	0.17	3.59	1.77	5.53	1.83	1.19	2.05	3.38	0.33
2001/02	0.33	3.17	1.83	5.33	1.79	1.24	1.81	3.20	0.34
2002/03	0.34	3.14	1.89	5.37	1.73	1.23	1.83	3.18	0.46
2003/04	0.46	3.29	1.68	5.43	1.80	1.27	1.83	3.23	0.40
2004/05	0.40	3.46	1.86	5.71	2.07	1.37	1.79	3.25	0.39
2005/06	0.39	3.46	1.99	5.85	2.08	1.49	1.91	3.54	0.23
2006/07	0.23	3.22	1.87	5.32	1.74	1.45	1.76	3.28	0.29
2007/08	0.29	3.53	1.95	5.77	1.92	1.54	1.80	3.45	0.40
2008/09	0.40	3.52	1.65	5.57	1.49	1.56	1.74	3.36	0.72
2009/10	0.72	3.62	2.02	6.36	2.11	1.62	2.07	3.78	0.47
2010/11	0.47	3.68	2.02	6.16	1.96	1.65	2.04	3.77	0.42
<b>Meal, Fish</b>									
1997/98	0.65	4.97	2.27	7.89	2.26	0.09	0.00	4.97	0.66
1998/99	0.66	5.81	2.78	9.25	3.07	0.08	0.00	5.51	0.67
1999/00	0.67	6.33	3.70	10.69	3.66	0.08	0.00	6.39	0.65
2000/01	0.65	5.92	3.47	10.04	3.47	0.08	0.00	6.17	0.40
2001/02	0.40	5.83	3.25	9.48	3.06	0.08	0.00	5.73	0.69
2002/03	0.69	4.84	2.85	8.38	2.86	0.08	0.00	5.22	0.31
2003/04	0.31	5.34	3.13	8.78	3.20	0.07	0.00	5.40	0.18
2004/05	0.18	5.71	3.59	9.48	3.67	0.05	0.00	5.66	0.15
2005/06	0.15	4.96	2.95	8.05	2.73	0.05	0.00	5.17	0.15
2006/07	0.15	5.07	2.69	7.91	2.59	0.05	0.00	5.00	0.31
2007/08	0.31	5.24	3.01	8.56	2.85	0.05	0.00	5.37	0.34
2008/09	0.34	5.10	3.11	8.55	2.95	0.05	0.00	5.34	0.25
2009/10	0.25	4.50	2.82	7.57	2.49	0.05	0.00	4.90	0.18
2010/11	0.18	4.99	3.15	8.32	2.93	0.05	0.00	5.25	0.14

Based on the aggregate of different marketing years.

**Table 20: United States Oilseeds and Products Supply and Distribution Local Marketing Year**

Thousand Metric Tons

	Area Harvested	Beginning Stocks	Production	Imports	Total Supply	Exports	Crush	Domestic Consumpti	Ending Stocks
<b>Major Oilseeds</b>									
1997/98	35,351	4,654	83,095	672	88,421	24,555	48,887	57,421	6,445
1998/99	35,275	6,445	84,364	698	91,507	22,722	47,813	58,005	10,780
1999/00	37,149	10,780	82,315	759	93,854	27,395	47,905	57,474	8,985
2000/01	36,805	8,985	84,891	817	94,693	27,976	49,189	58,897	7,820
2001/02	37,323	7,820	89,832	653	98,305	29,966	50,631	61,466	6,873
2002/03	36,284	6,873	83,935	550	91,358	29,433	47,505	56,090	5,835
2003/04	36,041	5,835	76,604	503	82,942	25,158	45,539	53,632	4,152
2004/05	36,808	4,152	95,944	681	100,777	30,708	50,167	61,780	8,289
2005/06	36,587	8,289	95,670	664	104,623	26,611	51,897	63,811	14,201
2006/07	36,962	14,201	96,843	1,033	112,077	31,647	53,483	63,407	17,023
2007/08	31,970	17,023	82,453	1,265	100,741	33,045	53,495	60,787	6,909
2008/09	35,265	6,909	89,201	1,295	97,405	35,695	49,343	56,091	5,619
2009/10	35,512	5,619	98,900	1,080	105,599	41,614	51,411	58,481	5,504
2010/11	37,848	5,504	104,807	872	111,183	41,568	49,437	58,599	11,016
<b>Major Protien Meals</b>									
1997/98	nr	229	37,455	1,355	39,039	8,957	48,887	29,783	299
1998/99	nr	299	36,764	1,221	38,284	7,223	47,813	30,728	333
1999/00	nr	333	36,713	1,242	38,288	7,131	47,905	30,860	297
2000/01	nr	297	38,238	1,162	39,697	7,607	49,189	31,693	397
2001/02	nr	397	38,890	1,060	40,347	7,524	50,631	32,537	286
2002/03	nr	286	36,585	1,200	38,071	5,922	47,505	31,903	246
2003/04	nr	246	35,200	1,845	37,291	4,933	45,539	32,085	273
2004/05	nr	273	39,246	1,521	41,040	6,970	50,167	33,855	215
2005/06	nr	215	39,910	1,655	41,780	7,611	51,897	33,808	361
2006/07	nr	361	41,449	1,701	43,511	8,264	53,483	34,862	385
2007/08	nr	385	40,873	1,979	43,237	8,710	53,495	34,194	333
2008/09	nr	333	37,713	1,811	39,857	7,947	49,343	31,664	246
2009/10	nr	246	39,896	1,257	41,399	10,553	51,411	30,511	335
2010/11	nr	335	38,094	1,815	40,244	8,513	49,437	31,397	334
<b>Major Vegetable Oils</b>									
1997/98	0	942	9,558	1,644	12,144	2,043	48,887	9,118	983
1998/99	0	983	9,431	1,410	11,824	1,635	47,813	9,191	998
1999/00	0	998	9,413	1,522	11,933	1,126	47,905	9,592	1,215
2000/01	0	1,215	9,554	1,683	12,452	1,047	49,189	9,766	1,639
2001/02	0	1,639	9,681	1,627	12,947	1,549	50,631	10,093	1,305
2002/03	0	1,305	9,197	1,543	12,045	1,238	47,505	9,885	922
2003/04	0	922	8,779	1,911	11,612	740	45,539	10,077	795
2004/05	0	795	9,769	1,841	12,405	838	50,167	10,443	1,124
2005/06	0	1,124	10,423	2,379	13,926	899	51,897	11,230	1,797
2006/07	0	1,797	10,455	2,527	14,779	1,333	53,483	11,705	1,741
2007/08	0	1,741	10,545	3,109	15,395	1,679	53,495	12,252	1,464
2008/09	0	1,464	9,665	3,230	14,359	1,457	49,343	11,165	1,737
2009/10	0	1,737	10,013	3,233	14,983	1,913	51,411	11,263	1,807
2010/11	0	1,807	9,785	3,299	14,891	1,313	49,437	12,002	1,576

Based on the aggregate of different marketing years

**Table 21: United States Soybeans and Products Supply and Distribution Local Marketing Years**

Thousand Metric Tons

	Area Harvested	Beginning Stocks	Production	Imports	Total Supply	Exports	Crush	Domestic Consumpti	Ending Stocks
<b>Oilseed, Soybean</b>									
1997/98	27,968	3,588	73,176	136	76,900	23,796	43,464	47,666	5,438
1998/99	28,507	5,438	74,598	96	80,132	21,899	43,262	48,749	9,484
1999/00	29,318	9,484	72,224	114	81,822	26,537	42,927	47,388	7,897
2000/01	29,303	7,897	75,055	97	83,049	27,103	44,625	49,203	6,743
2001/02	29,532	6,743	78,672	63	85,478	28,948	46,259	50,867	5,663
2002/03	29,339	5,663	75,010	127	80,800	28,423	43,948	47,524	4,853
2003/04	29,330	4,853	66,783	151	71,787	24,128	41,632	44,600	3,059
2004/05	29,930	3,059	85,019	152	88,230	29,860	46,160	51,410	6,960
2005/06	28,834	6,960	83,507	92	90,559	25,579	47,324	52,751	12,229
2006/07	30,190	12,229	87,001	246	99,476	30,386	49,198	53,473	15,617
2007/08	25,959	15,617	72,859	269	88,745	31,538	49,081	51,627	5,580
2008/09	30,222	5,580	80,749	361	86,690	34,817	45,230	48,112	3,761
2009/10	30,907	3,761	91,417	408	95,586	40,687	47,627	50,827	4,072
2010/11	31,560	4,072	94,789	272	99,133	40,415	44,906	49,206	9,512
<b>Meal, Soybean</b>									
1997/98	nr	191	34,633	60	34,884	8,722	43,464	25,964	198
1998/99	nr	198	34,285	101	34,584	6,979	43,262	27,305	300
1999/00	nr	300	34,102	65	34,467	6,912	42,927	27,289	266
2000/01	nr	266	35,730	50	36,046	7,335	44,625	28,363	348
2001/02	nr	348	36,552	134	37,034	7,271	46,259	29,545	218
2002/03	nr	218	34,649	157	35,024	5,728	43,948	29,096	200
2003/04	nr	200	32,953	259	33,412	4,690	41,632	28,531	191
2004/05	nr	191	36,936	134	37,261	6,659	46,160	30,446	156
2005/06	nr	156	37,416	128	37,700	7,301	47,324	30,114	285
2006/07	nr	285	39,037	142	39,464	7,987	49,198	31,166	311
2007/08	nr	311	38,359	128	38,798	8,384	49,081	30,148	266
2008/09	nr	266	35,473	80	35,819	7,708	45,230	27,898	213
2009/10	nr	213	37,671	127	38,011	10,342	47,627	27,397	272
2010/11	nr	272	35,593	150	36,015	8,255	44,906	27,488	272
<b>Oil, Soybean</b>									
1997/98	nr	690	8,229	27	8,946	1,397	43,464	6,922	627
1998/99	nr	627	8,202	38	8,867	1,076	43,262	7,101	690
1999/00	nr	690	8,085	37	8,812	624	42,927	7,284	904
2000/01	nr	904	8,355	33	9,292	636	44,625	7,401	1,255
2001/02	nr	1,255	8,572	21	9,848	1,143	46,259	7,635	1,070
2002/03	nr	1,070	8,360	21	9,451	1,027	43,948	7,748	676
2003/04	nr	676	7,748	139	8,563	425	41,632	7,650	488
2004/05	nr	488	8,782	12	9,282	600	46,160	7,911	771
2005/06	nr	771	9,248	16	10,035	523	47,324	8,147	1,365
2006/07	nr	1,365	9,294	17	10,676	851	49,198	8,426	1,399
2007/08	nr	1,399	9,335	30	10,764	1,320	49,081	8,317	1,127
2008/09	nr	1,127	8,503	41	9,671	995	45,230	7,378	1,298
2009/10	nr	1,298	8,861	50	10,209	1,520	47,627	7,235	1,454
2010/11	nr	1,454	8,532	52	10,038	953	44,906	7,892	1,193

Data based on Local Marketing Year (MY). Soybeans are on a September/August MY, and Soybean Meal and Oil are on an October/September MY.

**Table 22: Brazil Soybeans and Products Supply and Distribution Local Marketing Years**

Thousand Metric Tons

	Area Harvested	Beginning Stocks	Production	Imports	Total Supply	Exports	Crush	Domestic Consumpti	Ending Stocks
<b>Oilseed, Soybean (Local)</b>									
1997/98	13,000	599	32,500	634	33,733	9,325	21,832	23,586	822
1998/99	12,900	822	31,300	616	32,738	8,912	21,645	23,423	403
1999/00	13,600	403	34,700	794	35,897	11,779	21,578	23,502	616
2000/01	13,934	616	39,500	854	40,970	15,521	22,773	24,992	457
2001/02	16,350	457	43,500	1,100	45,057	16,074	25,843	28,302	681
2002/03	18,448	681	52,000	1,124	53,805	19,987	27,796	30,520	3,298
2003/04	21,476	3,298	51,000	364	54,662	19,257	28,914	31,807	3,598
2004/05	22,800	3,598	53,000	352	56,950	22,799	29,730	32,515	1,636
2005/06	22,229	1,636	57,000	40	58,676	24,770	28,754	31,654	2,252
2006/07	20,700	2,252	59,000	108	61,360	23,805	31,511	34,445	3,110
2007/08	21,300	3,110	61,000	83	64,193	24,515	31,895	34,860	4,818
2008/09	21,600	4,818	57,800	124	62,742	28,041	30,778	33,545	1,156
2009/10	23,500	1,156	69,000	185	70,341	30,050	33,785	36,735	3,556
2010/11	23,500	3,556	65,000	175	68,731	30,200	33,000	36,100	2,431
<b>Meal, Soybean (Local)</b>									
1997/98	nr	425	17,235	157	17,817	10,861	21,832	6,435	521
1998/99	nr	521	17,000	75	17,596	10,132	21,645	6,870	594
1999/00	nr	594	16,831	119	17,544	9,876	21,578	7,068	600
2000/01	nr	600	17,753	230	18,583	11,110	22,773	7,171	302
2001/02	nr	302	20,392	388	21,082	12,783	25,843	7,596	703
2002/03	nr	703	21,773	337	22,813	13,542	27,796	8,292	979
2003/04	nr	979	22,330	227	23,536	14,596	28,914	8,099	841
2004/05	nr	841	23,040	244	24,125	14,256	29,730	9,133	736
2005/06	nr	736	22,280	214	23,230	12,287	28,754	10,080	863
2006/07	nr	863	24,420	146	25,429	12,346	31,511	11,520	1,563
2007/08	nr	1,563	24,720	143	26,426	12,709	31,895	12,000	1,717
2008/09	nr	1,717	23,850	86	25,653	12,153	30,778	12,200	1,300
2009/10	nr	1,300	26,180	120	27,600	12,620	33,785	13,200	1,780
2010/11	nr	1,780	25,580	120	27,480	12,140	33,000	13,550	1,790
<b>Oil, Soybean (Local)</b>									
1997/98	nr	154	4,083	197	4,434	1,413	21,832	2,795	226
1998/99	nr	226	4,048	243	4,517	1,519	21,645	2,762	236
1999/00	nr	236	4,036	111	4,383	1,134	21,578	2,971	278
2000/01	nr	278	4,370	87	4,735	1,616	22,773	2,937	182
2001/02	nr	182	4,905	140	5,227	2,100	25,843	2,936	191
2002/03	nr	191	5,349	47	5,587	2,405	27,796	2,897	285
2003/04	nr	285	5,579	14	5,878	2,531	28,914	2,969	378
2004/05	nr	378	5,710	3	6,091	2,697	29,730	3,099	295
2005/06	nr	295	5,520	18	5,833	2,315	28,754	3,211	307
2006/07	nr	307	6,050	62	6,419	2,521	31,511	3,600	298
2007/08	nr	298	6,120	9	6,427	2,197	31,895	3,990	240
2008/09	nr	240	5,910	41	6,191	1,497	30,778	4,420	274
2009/10	nr	274	6,480	50	6,804	1,370	33,785	5,165	269
2010/11	nr	269	6,330	50	6,649	1,200	33,000	5,235	214

Data based on Brazil's local February/January Marketing Year (MY).  
Where February 2006 - January 2007 is the 2005/06 MY.



**Table 23: Argentina Soybeans and Products Supply and Distribution Local Marketing Years**

Thousand Metric Tons

	Area Harvested	Beginning Stocks	Production	Imports	Total Supply	Exports	Crush	Domestic Consumpti	Ending Stocks
<b>Oilseed, Soybean (Local)</b>									
1997/98	6,954	1,617	19,500	289	21,406	2,855	16,742	17,499	1,052
1998/99	8,165	1,052	20,000	251	21,303	3,097	17,108	17,933	273
1999/00	8,583	273	21,200	301	21,774	4,109	16,514	17,449	216
2000/01	10,401	216	27,800	291	28,307	7,377	19,507	20,587	343
2001/02	11,400	343	30,000	297	30,640	6,221	22,397	23,597	822
2002/03	12,600	822	35,500	377	36,699	8,809	24,815	26,140	1,750
2003/04	14,000	1,750	33,000	719	35,469	6,799	25,072	26,509	2,161
2004/05	14,400	2,161	39,000	709	41,870	10,686	29,560	31,010	174
2005/06	15,200	174	40,500	1,013	41,687	7,130	32,748	34,223	334
2006/07	16,300	334	48,800	2,336	51,470	12,133	35,963	37,463	1,874
2007/08	16,600	1,874	46,200	2,947	51,021	11,803	31,883	33,454	5,764
2008/09	16,000	5,764	32,000	157	37,921	3,486	28,552	30,137	4,298
2009/10	18,600	4,298	54,500	0	58,798	13,200	38,000	39,598	6,000
2010/11	18,000	6,000	50,000	0	56,000	13,000	38,650	40,300	2,700
<b>Meal, Soybean (Local)</b>									
1997/98	nr	1,890	13,440	0	15,330	12,689	16,742	343	2,298
1998/99	nr	2,298	13,438	0	15,736	12,761	17,108	342	2,633
1999/00	nr	2,633	13,113	0	15,746	12,854	16,514	350	2,542
2000/01	nr	2,542	15,492	0	18,034	15,979	19,507	374	1,681
2001/02	nr	1,681	17,762	0	19,443	17,572	22,397	423	1,448
2002/03	nr	1,448	19,667	0	21,115	19,162	24,815	500	1,453
2003/04	nr	1,453	19,741	2	21,196	19,078	25,072	530	1,588
2004/05	nr	1,588	23,350	1	24,939	22,703	29,560	550	1,686
2005/06	nr	1,686	25,582	0	27,268	24,723	32,748	574	1,971
2006/07	nr	1,971	27,857	2	29,830	28,108	35,963	625	1,097
2007/08	nr	1,097	24,839	3	25,939	24,389	31,883	632	918
2008/09	nr	918	22,529	4	23,451	21,303	28,552	652	1,496
2009/10	nr	1,496	29,445	4	30,945	29,085	38,000	690	1,170
2010/11	nr	1,170	29,950	2	31,122	29,300	38,650	705	1,117
<b>Oil, Soybean (Local)</b>									
1997/98	nr	445	2,953	0	3,398	2,544	16,742	217	637
1998/99	nr	637	3,118	0	3,755	3,085	17,108	230	440
1999/00	nr	440	3,017	0	3,457	2,837	16,514	242	378
2000/01	nr	378	3,630	0	4,008	3,510	19,507	287	211
2001/02	nr	211	4,165	0	4,376	3,639	22,397	357	380
2002/03	nr	380	4,672	0	5,052	4,245	24,815	389	418
2003/04	nr	418	4,724	0	5,142	4,446	25,072	392	304
2004/05	nr	304	5,558	0	5,862	5,082	29,560	395	385
2005/06	nr	385	6,169	0	6,554	5,667	32,748	402	485
2006/07	nr	485	6,917	0	7,402	6,515	35,963	675	212
2007/08	nr	212	6,037	0	6,249	4,987	31,883	1,125	137
2008/09	nr	137	5,448	0	5,585	3,707	28,552	1,721	157
2009/10	nr	157	7,240	0	7,397	5,100	38,000	2,119	178
2010/11	nr	178	7,400	0	7,578	5,120	38,650	2,285	173

Data based on Argentina's Local April/March Marketing Year (MY).  
Where April 2006 - March 2007 is the 2005/06 MY.

**Table 24: South East Asia: Oilseeds and Products Supply and Distribution**

Thousand Metric Tons

	2006/07	2007/08	2008/09	2009/10	Aug 2010/11	Sep 2010/11
<b>Production</b>						
Oilseed, Copra	3,988	4,347	4,466	4,465	4,545	4,545
Oilseed, Palm Kernel	8,639	9,544	10,241	10,541	11,626	11,261
Oilseed, Soybean	1,470	1,457	1,440	1,461	1,471	1,471
Other	3,386	3,374	3,503	3,519	3,519	3,519
<b>Total</b>	<b>17,483</b>	<b>18,722</b>	<b>19,650</b>	<b>19,986</b>	<b>21,161</b>	<b>20,796</b>
<b>Imports</b>						
Meal, Fish	112	120	129	130	129	132
Meal, Rapeseed	380	428	488	470	510	510
Meal, Soybean	9,078	8,817	9,270	10,052	10,417	10,567
Other	407	331	428	486	553	553
<b>Total</b>	<b>9,977</b>	<b>9,696</b>	<b>10,315</b>	<b>11,138</b>	<b>11,609</b>	<b>11,762</b>
<b>Imports</b>						
Oil, Palm	1,437	1,870	2,284	2,550	2,475	2,625
Oil, Rapeseed	0	0	0	0	0	0
Oil, Soybean	242	390	271	323	340	340
Oil, Sunflowerseed	0	0	0	0	0	0
Other	486	620	519	630	685	685
<b>Total</b>	<b>2,165</b>	<b>2,880</b>	<b>3,074</b>	<b>3,503</b>	<b>3,500</b>	<b>3,650</b>
<b>Domestic Consumption</b>						
Meal, Fish	522	544	609	558	623	558
Meal, Rapeseed	380	428	488	470	510	510
Meal, Soybean	10,501	10,422	10,629	11,434	11,983	12,133
Other	2,192	2,162	2,425	2,505	2,734	2,634
<b>Total</b>	<b>13,595</b>	<b>13,556</b>	<b>14,151</b>	<b>14,967</b>	<b>15,850</b>	<b>15,835</b>
<b>Domestic Consumption</b>						
Oil, Palm	8,947	9,742	10,195	10,871	11,173	11,303
Oil, Rapeseed	0	0	0	0	0	0
Oil, Soybean	456	597	507	523	532	532
Oil, Sunflowerseed	78	78	78	78	78	78
Other	3,375	3,642	3,834	3,925	4,147	4,047
<b>Total</b>	<b>12,856</b>	<b>14,059</b>	<b>14,614</b>	<b>15,397</b>	<b>15,930</b>	<b>15,960</b>
<b>Industrial Dom. Cons.</b>						
Oil, Palm	3,006	3,138	3,190	3,465	3,415	3,515
Oil, Rapeseed	0	0	0	0	0	0
Oil, Soybean	71	73	74	71	71	71
Oil, Sunflowerseed	0	0	0	0	0	0
Other	2,346	2,586	2,702	2,718	2,908	2,808
<b>Total</b>	<b>5,423</b>	<b>5,797</b>	<b>5,966</b>	<b>6,254</b>	<b>6,394</b>	<b>6,394</b>
<b>Food Use Dom. Cons.</b>						
Oil, Palm	5,549	6,197	6,579	6,908	7,243	7,263
Oil, Rapeseed	0	0	0	0	0	0
Oil, Soybean	385	524	433	452	461	461
Oil, Sunflowerseed	78	78	78	78	78	78
Other	1,024	1,050	1,124	1,197	1,227	1,227
<b>Total</b>	<b>7,036</b>	<b>7,849</b>	<b>8,214</b>	<b>8,635</b>	<b>9,009</b>	<b>9,029</b>
<b>SME</b>						
Meal, Fish	754	786	880	806	900	806
Meal, Rapeseed	270	305	347	334	363	363
Meal, Soybean	10,501	10,422	10,629	11,434	11,983	12,133
Other	1,180	1,137	1,249	1,291	1,385	1,350
<b>Total</b>	<b>12,706</b>	<b>12,650</b>	<b>13,105</b>	<b>13,866</b>	<b>14,631</b>	<b>14,652</b>

Southeast Asia includes Brunei, Burma, Cambodia, Indonesia, Laos, Malaysia, Philippines, Singapore, Thailand, and Vietnam.

SME - 44 Percent Protein Soybean Meal Equivalent

**Table 25: Middle East Oilseeds and Products Supply and Distribution**

Thousand Metric Tons

	2006/07	2007/08	2008/09	2009/10	Aug 2010/11	Sep 2010/11
<b>Production</b>						
Oilseed, Cottonseed	1,877	1,684	1,277	1,143	1,199	1,199
Oilseed, Rapeseed	0	0	0	0	0	0
Oilseed, Soybean	213	212	241	297	332	332
Oilseed, Sunflowerseed	910	758	888	861	936	936
Other	77	85	85	85	85	85
<b>Total</b>	<b>3,077</b>	<b>2,739</b>	<b>2,491</b>	<b>2,386</b>	<b>2,552</b>	<b>2,552</b>
<b>Imports</b>						
Meal, Fish	54	62	53	59	56	56
Meal, Rapeseed	21	54	58	35	30	30
Meal, Soybean	2,623	2,920	3,597	3,540	3,795	3,795
Other	813	513	743	909	834	834
<b>Total</b>	<b>3,511</b>	<b>3,549</b>	<b>4,451</b>	<b>4,543</b>	<b>4,715</b>	<b>4,715</b>
<b>Imports</b>						
Oil, Palm	1,905	2,240	2,050	2,270	2,390	2,390
Oil, Rapeseed	4	13	4	5	6	6
Oil, Soybean	792	693	405	442	433	433
Oil, Sunflowerseed	365	554	921	625	780	750
Other	41	48	60	59	58	58
<b>Total</b>	<b>3,107</b>	<b>3,548</b>	<b>3,440</b>	<b>3,401</b>	<b>3,667</b>	<b>3,637</b>
<b>Domestic Consumption</b>						
Meal, Fish	59	66	57	61	60	60
Meal, Rapeseed	139	321	302	270	288	288
Meal, Soybean	4,605	5,080	5,377	5,950	6,274	6,289
Other	2,092	1,683	1,732	1,938	1,824	1,824
<b>Total</b>	<b>6,895</b>	<b>7,150</b>	<b>7,468</b>	<b>8,219</b>	<b>8,446</b>	<b>8,461</b>
<b>Domestic Consumption</b>						
Oil, Palm	1,552	1,803	1,868	1,944	2,080	2,080
Oil, Rapeseed	52	116	112	104	106	106
Oil, Soybean	1,224	1,072	771	895	887	887
Oil, Sunflowerseed	995	1,004	1,230	1,268	1,317	1,297
Other	582	553	555	531	528	538
<b>Total</b>	<b>4,405</b>	<b>4,548</b>	<b>4,536</b>	<b>4,742</b>	<b>4,918</b>	<b>4,908</b>
<b>Industrial Dom. Cons.</b>						
Oil, Palm	160	146	145	155	168	168
Oil, Rapeseed	28	35	33	34	35	35
Oil, Soybean	137	76	60	69	66	66
Oil, Sunflowerseed	22	22	22	22	22	22
Other	58	50	42	46	46	46
<b>Total</b>	<b>405</b>	<b>329</b>	<b>302</b>	<b>326</b>	<b>337</b>	<b>337</b>
<b>Food Use Dom. Cons.</b>						
Oil, Palm	1,392	1,657	1,723	1,789	1,912	1,912
Oil, Rapeseed	24	81	79	70	71	71
Oil, Soybean	1,065	976	691	805	799	799
Oil, Sunflowerseed	953	960	1,186	1,224	1,275	1,255
Other	524	503	513	485	482	492
<b>Total</b>	<b>3,958</b>	<b>4,177</b>	<b>4,192</b>	<b>4,373</b>	<b>4,539</b>	<b>4,529</b>
<b>SME</b>						
Meal, Fish	85	95	82	88	87	87
Meal, Rapeseed	99	228	215	192	205	205
Meal, Soybean	4,605	5,080	5,377	5,950	6,274	6,289
Other	1,854	1,484	1,552	1,756	1,645	1,645
<b>Total</b>	<b>6,643</b>	<b>6,888</b>	<b>7,227</b>	<b>7,986</b>	<b>8,210</b>	<b>8,225</b>

Middle East includes Bahrain, Gaza Strip, Iran, Iraq, Israel, Jordan, Kuwait, Lebanon, Oman, Qatar, Saudi Arabia, Syria, Turkey, United Arab Emirates, West Banks, and Yemen.

SME - 44 Percent Protein Soybean Meal Equivalent

**Table 26: European Union (27): Oilseeds and Products Supply and Distribution (Working Statistics)**

Thousand Metric Tons

	2006/07	2007/08	2008/09	2009/10	Aug 2010/11	Sep 2010/11
<b>Production</b>						
Oilseed, Rapeseed	16,092	18,358	19,080	21,446	20,000	20,000
Oilseed, Soybean	1,228	723	639	859	1,000	1,000
Oilseed, Sunflowerseed	6,502	4,799	7,134	6,933	6,900	6,800
Other	678	643	475	462	470	470
<b>Total</b>	<b>24,500</b>	<b>24,523</b>	<b>27,328</b>	<b>29,700</b>	<b>28,370</b>	<b>28,270</b>
<b>Imports</b>						
Meal, Fish	536	487	561	550	450	550
Meal, Rapeseed	106	109	171	150	100	100
Meal, Soybean	22,213	24,074	20,980	21,800	23,050	23,050
Other	4,167	3,880	4,972	4,742	4,782	4,782
<b>Total</b>	<b>27,022</b>	<b>28,550</b>	<b>26,684</b>	<b>27,242</b>	<b>28,382</b>	<b>28,482</b>
<b>Imports</b>						
Oil, Palm	4,332	4,960	5,379	5,100	5,400	5,400
Oil, Rapeseed	727	296	454	450	450	450
Oil, Soybean	991	1,040	793	550	400	550
Oil, Sunflowerseed	1,205	1,184	1,007	970	1,030	1,030
Other	1,765	1,551	1,455	1,504	1,558	1,518
<b>Total</b>	<b>9,020</b>	<b>9,031</b>	<b>9,088</b>	<b>8,574</b>	<b>8,838</b>	<b>8,948</b>
<b>Domestic Consumption</b>						
Meal, Fish	885	823	817	850	750	850
Meal, Rapeseed	9,100	10,413	11,759	12,944	12,500	12,500
Meal, Soybean	33,228	35,169	31,579	31,094	32,300	32,457
Other	7,233	6,495	8,040	8,352	8,133	8,133
<b>Total</b>	<b>50,446</b>	<b>52,900</b>	<b>52,195</b>	<b>53,240</b>	<b>53,683</b>	<b>53,940</b>
<b>Domestic Consumption</b>						
Oil, Palm	4,256	4,761	4,993	5,024	5,388	5,388
Oil, Rapeseed	7,198	7,774	8,679	9,665	9,545	9,545
Oil, Soybean	3,368	3,377	2,779	2,380	2,360	2,543
Oil, Sunflowerseed	3,287	2,901	3,158	3,234	3,303	3,303
Other	3,595	3,619	3,475	3,525	3,509	3,509
<b>Total</b>	<b>21,704</b>	<b>22,432</b>	<b>23,084</b>	<b>23,828</b>	<b>24,105</b>	<b>24,288</b>
<b>Industrial Dom. Cons.</b>						
Oil, Palm	1,400	1,821	1,765	1,850	2,100	2,100
Oil, Rapeseed	4,768	4,919	5,931	6,560	6,590	6,590
Oil, Soybean	1,563	1,592	1,085	1,010	920	1,085
Oil, Sunflowerseed	215	195	263	250	280	280
Other	417	452	360	374	383	383
<b>Total</b>	<b>8,363</b>	<b>8,979</b>	<b>9,404</b>	<b>10,044</b>	<b>10,273</b>	<b>10,438</b>
<b>Food Use Dom. Cons.</b>						
Oil, Palm	2,656	2,720	2,968	2,897	2,988	2,988
Oil, Rapeseed	2,425	2,850	2,743	3,100	2,950	2,950
Oil, Soybean	1,675	1,655	1,564	1,240	1,310	1,328
Oil, Sunflowerseed	3,069	2,704	2,893	2,982	3,020	3,020
Other	3,142	3,141	3,089	3,125	3,100	3,100
<b>Total</b>	<b>12,967</b>	<b>13,070</b>	<b>13,257</b>	<b>13,344</b>	<b>13,368</b>	<b>13,386</b>
<b>SME</b>						
Meal, Fish	1,279	1,189	1,181	1,228	1,084	1,228
Meal, Rapeseed	6,475	7,409	8,367	9,210	8,894	8,894
Meal, Soybean	33,228	35,169	31,579	31,094	32,300	32,457
Other	5,447	4,745	6,115	6,465	6,263	6,263
<b>Total</b>	<b>46,429</b>	<b>48,512</b>	<b>47,241</b>	<b>47,997</b>	<b>48,540</b>	<b>48,842</b>

EU-27 includes Austria, Belgium, Bulgaria, Cyprus, Czech Republic, Denmark, Estonia, Finland, France, Germany, Greece, Hungary, Ireland, Italy, Latvia, Lithuania, Luxembourg, Malta, Netherlands, Poland, Portugal, Romania, Slovakia, Slovenia, Spain, Sweden, and United Kingdom.

**Table 27: China Oilseeds and Products Supply and Distribution**

Thousand Metric Tons

	2006/07	2007/08	2008/09	2009/10	Aug 2010/11	Sep 2010/11
<b>Production</b>						
Oilseed, Peanut	12,887	13,027	14,286	14,700	14,800	14,600
Oilseed, Rapeseed	10,966	10,573	12,100	13,700	12,800	12,800
Oilseed, Soybean	15,967	14,000	15,540	14,700	14,600	14,400
Oilseed, Sunflowerseed	1,500	1,250	1,790	1,630	1,680	1,680
Other	13,910	14,500	14,400	12,540	12,930	12,740
<b>Total</b>	<b>55,230</b>	<b>53,350</b>	<b>58,116</b>	<b>57,270</b>	<b>56,810</b>	<b>56,220</b>
<b>Imports</b>						
Meal, Fish	970	1,351	1,311	1,100	1,250	1,400
Meal, Rapeseed	328	302	260	800	370	450
Meal, Soybean	32	203	215	65	50	150
Other	51	101	24	33	13	13
<b>Total</b>	<b>1,381</b>	<b>1,957</b>	<b>1,810</b>	<b>1,998</b>	<b>1,683</b>	<b>2,013</b>
<b>Imports</b>						
Oil, Palm	5,139	5,223	6,118	6,350	7,150	7,150
Oil, Peanut	11	6	20	50	30	30
Oil, Rapeseed	330	277	453	650	600	600
Oil, Soybean	2,404	2,727	2,494	1,600	2,150	2,000
Oil, Sunflowerseed	94	2	125	180	150	150
Other	524	523	563	770	800	800
<b>Total</b>	<b>8,502</b>	<b>8,758</b>	<b>9,773</b>	<b>9,600</b>	<b>10,880</b>	<b>10,730</b>
<b>Domestic Consumption</b>						
Meal, Fish	1,258	1,646	1,618	1,395	1,545	1,695
Meal, Rapeseed	7,479	7,069	8,317	9,685	9,048	9,190
Meal, Soybean	27,630	30,849	31,673	37,340	42,710	43,856
Other	7,584	7,694	7,952	7,491	7,609	7,488
<b>Total</b>	<b>43,951</b>	<b>47,258</b>	<b>49,560</b>	<b>55,911</b>	<b>60,912</b>	<b>62,229</b>
<b>Domestic Consumption</b>						
Oil, Palm	5,138	5,222	5,618	6,320	7,197	7,127
Oil, Peanut	2,007	2,016	2,184	2,219	2,235	2,204
Oil, Rapeseed	4,343	4,139	4,853	5,468	5,646	5,682
Oil, Soybean	8,670	9,693	9,486	10,424	12,011	12,070
Oil, Sunflowerseed	329	129	439	443	420	420
Other	2,072	2,144	2,158	2,233	2,290	2,263
<b>Total</b>	<b>22,559</b>	<b>23,343</b>	<b>24,738</b>	<b>27,107</b>	<b>29,799</b>	<b>29,766</b>
<b>Food Use Dom. Cons.</b>						
Oil, Palm	3,188	3,222	3,568	4,270	4,867	4,967
Oil, Peanut	2,007	2,016	2,184	2,219	2,235	2,204
Oil, Rapeseed	4,343	4,139	4,853	5,468	5,646	5,682
Oil, Soybean	8,670	9,693	9,486	10,424	12,011	12,070
Oil, Sunflowerseed	329	129	439	443	420	420
Other	1,681	1,775	1,707	1,733	1,740	1,713
<b>Total</b>	<b>20,218</b>	<b>20,974</b>	<b>22,237</b>	<b>24,557</b>	<b>26,919</b>	<b>27,056</b>
<b>SME</b>						
Meal, Fish	1,818	2,378	2,338	2,016	2,233	2,449
Meal, Rapeseed	5,321	5,030	5,918	6,891	6,438	6,539
Meal, Soybean	27,630	30,849	31,673	37,340	42,710	43,856
Other	7,007	7,100	7,382	7,002	7,107	6,997
<b>Total</b>	<b>41,776</b>	<b>45,357</b>	<b>47,310</b>	<b>53,249</b>	<b>58,488</b>	<b>59,841</b>

SME - 44 Percent Protein Soybean Meal Equivalent

**Table 28: India Oilseeds and Products Supply and Distribution**

Thousand Metric Tons

	2006/07	2007/08	2008/09	2009/10	Aug 2010/11	Sep 2010/11
<b>Production</b>						
Oilseed, Cottonseed	9,128	10,400	9,600	9,800	10,800	10,800
Oilseed, Peanut	5,385	6,800	6,250	4,900	6,400	6,400
Oilseed, Rapeseed	5,800	5,450	6,700	6,400	7,000	7,000
Oilseed, Soybean	7,690	9,470	9,100	8,750	8,800	8,800
Oilseed, Sunflowerseed	1,280	1,120	1,000	820	900	900
Other	633	713	749	749	749	749
<b>Total</b>	<b>29,916</b>	<b>33,953</b>	<b>33,399</b>	<b>31,419</b>	<b>34,649</b>	<b>34,649</b>
<b>Imports</b>						
Oil, Cottonseed	0	0	5	0	0	0
Oil, Palm	3,650	5,015	6,867	6,400	7,500	7,000
Oil, Peanut	0	0	0	0	0	0
Oil, Rapeseed	0	0	42	23	23	23
Oil, Soybean	1,447	733	1,060	1,500	1,180	1,200
Oil, Sunflowerseed	203	18	583	550	450	450
Other	140	151	230	230	235	235
<b>Total</b>	<b>5,440</b>	<b>5,917</b>	<b>8,787</b>	<b>8,703</b>	<b>9,388</b>	<b>8,908</b>
<b>Domestic Consumption</b>						
Meal, Cottonseed	3,084	3,473	3,373	3,424	3,655	3,745
Meal, Peanut	1,468	1,843	1,777	1,400	1,822	1,822
Meal, Rapeseed	2,700	1,970	2,475	2,775	2,838	2,838
Meal, Soybean	1,020	1,450	1,950	2,650	2,955	2,955
Meal, Sunflowerseed	558	481	424	339	376	376
Other	257	274	303	302	302	302
<b>Total</b>	<b>9,087</b>	<b>9,491</b>	<b>10,302</b>	<b>10,890</b>	<b>11,948</b>	<b>12,038</b>
<b>Domestic Consumption</b>						
Oil, Cottonseed	947	1,054	1,038	1,049	1,111	1,141
Oil, Palm	3,671	5,065	6,475	6,750	7,550	7,150
Oil, Peanut	1,433	1,582	1,455	1,385	1,495	1,495
Oil, Rapeseed	2,133	1,967	2,095	2,252	2,287	2,287
Oil, Soybean	2,500	2,330	2,300	2,670	2,600	2,690
Oil, Sunflowerseed	600	398	731	852	730	730
Other	523	574	667	674	679	679
<b>Total</b>	<b>11,807</b>	<b>12,970</b>	<b>14,761</b>	<b>15,632</b>	<b>16,452</b>	<b>16,172</b>
<b>Food Use Dom. Cons.</b>						
Oil, Cottonseed	915	1,021	1,000	1,010	1,070	1,100
Oil, Palm	3,175	4,585	6,150	6,400	7,200	6,800
Oil, Peanut	1,420	1,567	1,440	1,370	1,480	1,480
Oil, Rapeseed	2,133	1,967	2,095	2,252	2,287	2,287
Oil, Soybean	2,500	2,330	2,300	2,670	2,600	2,690
Oil, Sunflowerseed	600	398	731	852	730	730
Other	214	248	337	337	339	339
<b>Total</b>	<b>10,957</b>	<b>12,116</b>	<b>14,053</b>	<b>14,891</b>	<b>15,706</b>	<b>15,426</b>
<b>SME</b>						
Meal, Cottonseed	2,499	2,814	2,733	2,774	2,962	3,035
Meal, Peanut	1,650	2,072	1,997	1,574	2,048	2,048
Meal, Rapeseed	1,921	1,402	1,761	1,974	2,019	2,019
Meal, Soybean	1,020	1,450	1,950	2,650	2,955	2,955
Meal, Sunflowerseed	527	454	400	320	355	355
Other	115	123	136	136	136	136
<b>Total</b>	<b>7,732</b>	<b>8,315</b>	<b>8,978</b>	<b>9,428</b>	<b>10,475</b>	<b>10,547</b>

SME - 44 Percent Protein Soybean Meal Equivalent

**Table 29: Oilseed Prices**  
**U.S. Dollars per Metric Ton**

Year Beg Oct 1	Soybean					Peanut		Sunseed		Rapeseed	Copra
	U.S. 1/	U.S. 2/	Brz 3/	Arg 4/	Rott 5/	U.S. 6/	Rott 7/	U.S. 8/	Rott 9/	Hamb 10/	Rott 11/
<b>Oct - Sep Average</b>											
98/99-07/08	227	235	243	242	285	455	978	280	333	301	421
1998/99	176	177	184	179	225	563	847	223	257	227	468
1999/00	173	175	183	180	208	544	820	168	214	190	357
2000/01	167	169	180	175	200	582	888	167	219	202	208
2001/02	170	174	183	179	203	389	700	238	287	220	245
2002/03	209	232	217	221	267	415	963	265	286	285	287
2003/04	291	294	277	285	323	425	976	282	321	317	424
2004/05	217	214	232	228	277	402	915	316	313	262	431
2005/06	205	202	228	227	261	383	857	261	291	292	387
2006/07	254	264	279	279	335	394	1,128	343	401	375	537
2007/08	414	452	472	469	550	458	1,688	532	745	644	867
<b>2008/09</b>											
Oct	365	322	368	362	394	454	1,444	558	389	439	585
Nov	345	318	361	354	378	443	1,355	520	337	409	479
Dec	330	310	343	335	360	478	1,282	492	316	368	495
Jan	366	356	388	383	413	525	1,270	483	344	388	479
Feb	351	337	364	367	390	558	1,165	507	369	363	446
Mar	335	344	356	347	379	560	1,108	498	350	352	416
Apr	360	369	390	387	414	556	1,128	443	350	381	499
May	393	419	439	432	465	545	1,140	476	413	437	559
Jun	419	443	457	453	503	545	1,125	406	413	434	480
Jul	397	393	452	429	463	516	1,152	390	370	384	448
Aug	397	406	484	448	470	511	1,160	454	365	384	492
Sep	358	359	430	408	421	514	1,120	306	348	375	466
<b>Average</b>	368	365	403	392	421	517	1,204	461	364	393	487
<b>2009/10</b>											
Oct	347	348	418	422	427	525	1,160	357	373	390	470
Nov	350	364	391	439	440	481	1,160	311	406	402	493
Dec	360	373	399	446	450	474	1,196	324	448	415	509
Jan	360	351	379	391	437	454	1,213	346	434	408	524
Feb	346	338	359	347	406	463	1,250	370	444	398	538
Mar	345	341	357	353	408	454	1,240	348	463	407	608
Apr	348	351	366	364	411	448	1,180	353	479	418	628
May	346	342	359	359	407	454	1,214	328	485	378	624
Jun	347	347	368	365	408	476	1,225	331	423	388	651
Jul	360	370	406	399	429	474	1,225	340	443	443	689
*Aug	371	383	426	423	457	463	1,225	364	491	479	772
Sep											
<b>Average</b>	353	355	384	392	425	470	1,208	343	444	411	591

1/ U.S. Farm Price; USDA. 2/ U.S. NO.1 Yellow Cash Central Illinois; Wall Street Journal.  
3/ Rio Grande, Brazil FOB; Safras & Mercado or FOB Paranagua Reuters 4/ Argentina FOB  
Up River; Reuters 5/ Rotterdam CIF; U.S.; Oil World. 6/ US Farm Price, Inshell, USDA.  
7/ Rotterdam CIF; US Runners 40/50%, Shelled Basis, Oilworld. 8/ US Farm Price; USDA  
9/ Rotterdam CIF; EC Lower Rhine; Oil World 10/Hamburg CIF; Europe "00"; Oil World.  
11/ Phil/Indo CIF NW Europe; Oil World  
\* Preliminary

9/10/2010 8:59:36 AM

**Table 30: Protein Meal Prices**  
**U.S. Dollars per Metric Ton**

Year Beg Oct 1	Soybean				Cottonseed	Sunseed		Fish	Rapeseed
	U.S. 1/	Brz 2/	Arg 3/	Hamb 4/	U.S. 5/	U.S. 6/	Rott 7/	Hamb 8/	Hamb 9/
<b>Oct - Sep Average</b>									
98/99-07/08	218	195	175	235	167	106	138	724	156
1998/99	153	150	130	150	121	72	76	442	105
1999/00	185	182	159	180	141	83	102	407	124
2000/01	191	187	168	188	158	100	118	459	141
2001/02	180	174	157	174	146	95	110	592	129
2002/03	200	163	152	197	161	101	106	598	139
2003/04	282	211	188	273	202	122	149	649	178
2004/05	202	172	157	231	137	94	120	665	131
2005/06	192	176	158	215	159	85	122	1060	129
2006/07	226	199	181	276	166	116	178	1220	184
2007/08	370	337	299	469	280	191	298	1146	298
<b>2008/09</b>									
Oct	287	279	247	358	263	178	152	1,051	156
Nov	295	271	250	347	248	162	130	983	155
Dec	296	273	234	345	253	165	143	1,036	168
Jan	338	324	291	378	262	181	164	1,009	200
Feb	328	325	300	391	260	178	189	1,001	217
Mar	322	294	264	374	235	148	179	1,030	204
Apr	357	329	296	398	234	143	182	1,040	222
May	419	381	337	444	260	156	195	1,103	231
Jun	461	380	330	448	337	207	208	1,149	227
Jul	411	356	281	439	336	188	192	1,208	184
Aug	447	397	319	444	347	163	198	1,272	186
Sep	419	383	328	444	340	148	198	1,348	190
<b>Average</b>	365	333	290	401	281	168	178	1,103	195
<b>2009/10</b>									
Oct	359	354	320	430	276	167	201	1,427	188
Nov	362	354	320	425	287	209	207	1,526	197
Dec	368	350	312	425	313	218	214	1,651	217
Jan	346	334	304	407	316	200	216	1,681	240
Feb	326	309	277	393	280	183	243	1,627	231
Mar	306	268	239	389	235	152	241	1,672	200
Apr	321	295	294	376	193	146	230	1,874	203
May	317	300	300	353	189	133	227	1,821	228
Jun	337	308	306	342	194	121	211	1,747	196
Jul	359	336	333	361	203	132	228	1,715	227
*Aug	366	358	356	389	218	156	NA	1,629	247
Sep									
<b>Average</b>	342	324	306	390	246	165	222	1,670	216

1/ Decatur, Average Wholesale 48% Protein; USDA. 2/ Rio Grande, Brazil FOB; Bulk Rate 45-46% Protein; Reuters. 3/ Argentina Pellets, FOB Up River; Reuters  
4/ Hamburg FOB Ex-Mill; Oil World. 5/ Memphis FOB; 41% Protein Solvent Extraction; USDA  
6/ Minneapolis FOB; 32% Protein; USDA. 7/ Rotterdam CIF; Argentina Pellet 37-38%; Oil World. 8/ Bremen (Hamburg prior to Mar 2006) 64-65% Protein; Oil World.  
9/ Hamburg FOB; Ex-Mill 34% Protein; Oil World.

\* Preliminary

9/10/2010 8:59:36 AM



**Table 31: Vegetable Oil Prices**  
**U.S. Dollars per Metric Ton**

Year Begin Oct 1	Soybean				Cottonseed U.S. 5/	Sunseed		Peanut		Palm Malay 10/	Canola Rott 11/	Coconut Rott 12/	Corn U.S. 13/
	U.S. 1/	Brz 2/	Arg 3/	Rott 4/		U.S. 6/	Rott 7/	U.S. 8/	Rott 9/				
<b>Oct - Sep Average</b>													
98/99-07/08	546	531	529	597	701	829	707	1,112	1,048	478	662	641	632
1998/99	438	452	453	483	602	444	560	876	801	486	482	748	558
1999/00	344	328	332	356	474	365	413	780	744	309	359	539	393
2000/01	311	295	295	336	352	350	428	768	685	235	372	323	299
2001/02	363	376	376	412	396	513	587	716	659	329	451	388	422
2002/03	486	489	491	534	832	731	592	1,034	1,139	421	588	449	621
2003/04	661	567	542	633	688	738	663	1,317	1,178	481	670	630	625
2004/05	507	466	471	545	609	962	703	1,171	1,102	392	660	636	614
2005/06	516	474	467	573	649	896	635	981	931	416	770	583	555
2006/07	684	673	667	771	787	1,279	846	1,253	1,219	655	852	812	701
2007/08	1,147	1,190	1,191	1,327	1,622	2,010	1,639	2,225	2,018	1,058	1,410	1,306	1,529
<b>2008/09</b>													
Oct	783	769	773	928	1,024	1,640	950	2,138	2,110	564	1,053	856	766
Nov	696	698	697	824	824	1,190	835	1,984	1,772	489	991	719	685
Dec	646	627	623	738	725	937	759	1,879	1,436	511	836	740	593
Jan	709	700	683	789	787	917	817	1,744	1,343	566	817	734	555
Feb	638	665	659	748	732	882	805	1,653	1,293	577	760	673	640
Mar	622	655	652	727	719	937	757	1,378	1,214	595	709	625	653
Apr	722	762	759	801	824	992	843	1,295	1,187	716	807	747	690
May	795	847	842	892	880	1,085	941	1,248	1,157	799	933	843	821
Jun	786	832	827	896	854	1,185	907	1,257	1,154	732	920	747	872
Jul	685	751	748	837	806	1,177	804	1,338	1,149	647	846	686	800
Aug	743	814	808	886	863	1,179	820	1,367	1,131	719	887	747	777
Sep	683	759	818	846	803	1,174	809	1,190	1,120	675	857	701	812
<b>Average</b>	709	740	741	826	820	1,108	837	1,539	1,339	633	868	735	722
<b>2009/10</b>													
Oct	731	802	825	897	836	1,151	846	1,129	1,148	663	896	706	829
Nov	807	853	831	931	897	1,168	921	1,146	1,116	703	928	729	840
Dec	812	857	816	935	913	1,146	986	1,151	1,192	766	944	768	882
Jan	769	845	852	923	860	1,146	969	1,301	1,316	774	916	784	889
Feb	765	840	790	914	863	1,146	948	1,312	1,380	778	893	798	828
Mar	802	820	793	915	879	1,130	949	1,295	1,380	809	897	921	846
Apr	818	817	809	903	854	1,138	924	1,402	1,360	811	909	940	849
May	781	820	790	865	824	1,157	910	1,491	1,353	798	864	932	849
Jun	760	808	773	859	882	1,229	889	1,494	1,342	787	880	993	858
Jul	773	856	827	907	936	1,182	937	1,495	1,300	801	946	1,031	866
*Aug	828	915	899	1,002	963	1,185	1,074	1,508	1,334	915	1,013	1,170	914
Sep													
<b>Average</b>	786	839	819	914	882	1,162	941	1,339	1,293	782	917	888	859

1/ Decatur; Average Wholesale Tank Crude; USDA. 2/ Brazil FOB; Bulk Rate; Reuters. 3/ Argentina FOB;

Oilworld or Reuters 4/ Dutch FOB; Ex-Mill; Oil World. 5/ Valley Points FOB. Tank Cars Crude; USDA.

6/ Minneapolis FOB; USDA. 7/ EU FOB NW Euro; Oil World. 8/ South East Mills FOB; Tank Cars Crude; USDA.

9/ Rotterdam CIF; Any Origin; Oil World. 10/ Malaysia FOB; RBD; Oil World. 11/ Rotterdam, Dutch FOB

Ex-Mill; Oilworld. 12/ Rotterdam CIF; Phil/Indo; Oil World. 14/ Decatur; Crude; AMS

\* Preliminary

9/10/2010 8:59:36 AM